

CLASSIQUE ROUND PENDANT



Black Linen

CONSTRUCTION:

- Fabric shade
- White acrylic bottom diffuser with finial
- 36 in. standard stem kit includes 6 in., 12 in. and 18 in. sections for adjustability
- Additional stem sections available, maximum height 12 ft.
- 12 ft. of field adjustable wire included

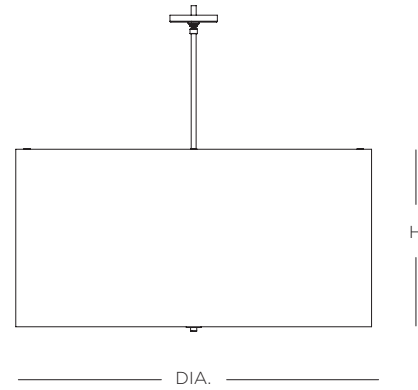
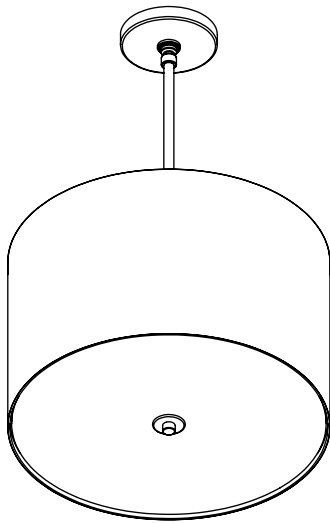
ELECTRICAL:

- 120V medium base sockets
- Integrated LED option (50,000 Hrs., 90 CRI, CCT 3000K)

CERTIFICATION:

- cULus Listed (medium base)
- ETL Listed (LED)

CLASSIQUE ROUND PENDANT



Specifications			Medium Base	Integrated LED		Specifications			Medium Base	Integrated LED	
Size	DIA.	H	Sockets	Source Lumens	Wattage	Size	DIA.	H	Sockets	Source Lumens	Wattage
10	16"	10"	2 x 75W max	2400	30W	15	32"	11"	3 x 100W max	4400	55W
11	24"	12"	3 x 100W max	3200	44W	16	36"	18"	3 x 100W max	4400	55W
12	32"	20"	3 x 100W max	4400	55W	17	48"	24"	4 x 100W max	6600	82W
13	16"	6"	2 x 75W max	2400	30W	18	36"	10"	3 x 100W max	4400	55W
14	24"	8"	3 x 100W max	3200	44W	19	48"	12"	4 x 100W max	6600	82W

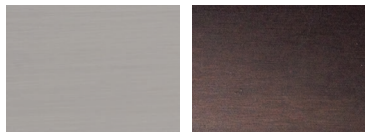
Four piece acrylic diffuser with finial on sizes 17, 18, and 19

Ordering

Model	Size	Lamping	- Finish	- Fabric
SCLQP	10 = 16"	MB Medium Base Socket	BN Brushed Nickel	301 Beige Linen
	11 = 24"	L1 LED (120V TRIAC Dimming)	RB Hand-Rubbed Bronze	302 Oatmeal Linen
	12 = 32"	L2 LED (120-277V 0-10V Dimming)		303 White Linen
	13 = 16"			304 Black Linen
	14 = 24"			
	15 = 32"			
	16 = 36"			
	17 = 48"			
	18 = 36"			
	19 = 48"			

Example: SCLQP13L1-RB-302

Finish Options



BN
Brushed Nickel

RB
Hand-Rubbed
Bronze

Fabric Options



301
Beige Linen

302
Oatmeal Linen

303
White Linen

304
Black Linen

All specifications and dimensions subject to change without notice.