

SLATE™ PRO 2.0

TAKE CONTROL



WiFi



Bluetooth



Remote



Voice





VOICE

Compatible with Amazon Alexa Voice Recognized Smart Speaker Systems.



- CCT 2700K-4000K
- 90+ CRI
- Full-range dimming
- Glare-free



REMOTE

Independent Wireless Remote.



APP

Download AFXLight APP To Work With Your Portable Device.



- Voice controlled
- Energy Star® and T24
- Programmable
- Low profile

Brightness and Color, both at your command

For new construction or renovation, the Slate Pro Color-Control LED System provides unprecedented flexibility to tailor under-cabinet lighting to suit the setting, facilitate a task, or set the mood. Evenly lit, glare-free illumination featuring the latest in low-profile LED technology is driven by an innovative 3-function control that brings dimming and color temperature within your reach.

Slate's dual adjustment has been designed to give control over lighting the kitchen environment. While preparing food for dinner guests, a full brightness may be preferred, with color temperature set to a cool and clean visibility level. When company arrives, a more sociable mood can be created by bringing the dimmer down and adjusting to a warm setting.



FULL-RANGE
WARM-TO-COOL
COLOR CONTROL



FULL-RANGE
DIMMING CONTROL



4000K
Cool White



2700K
Warm White

SLATE™ PRO 2.0 SPLE SERIES

HOW TO ORDER: SPLE-STRKIT + LED PANELS + ACCESSORY

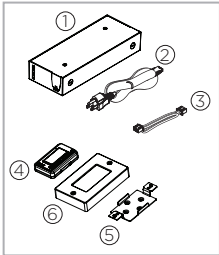
SPLE-STRKIT (REQUIRED)

Starter Kit Contains:

- 1- 2.0 Power Supply w/ Bluetooth & Wi-Fi Capabilities
- 2- 3-Prong AC Power Cable
- 3- 96" DC Control Cable
- 4- Wireless Remote Control
- 5- Remote Mounting Bracket
- 6- Remote Wall Mount Cover Plate

Note: Screws for Mounting Bracket and Cover Plate are included.

Starter Kit



LED PANELS (REQUIRED)

Size	White	Oil-Rubbed Bronze	Lumens Watts	4000K	LPW	L	W	D
9 in.	SPLE9WH	SPLE9RB	4.5W	375	58	9"	4"	1/2"
14 in.	SPLE14WH	SPLE14RB	7.5W	585	60	14"	4"	1/2"
22 in.	SPLE22WH	SPLE22RB	12W	920	60	22"	4"	1/2"
32 in.	SPLE32WH	SPLE32RB	18W	1330	60	32"	4"	1/2"
40 in.	SPLE40WH	SPLE40RB	22W	1670	60	40"	4"	1/2"

Each panel includes (1) one:
- 12" interconnect cord
- Direct connector

ACCESSORY (ADDITIONAL)

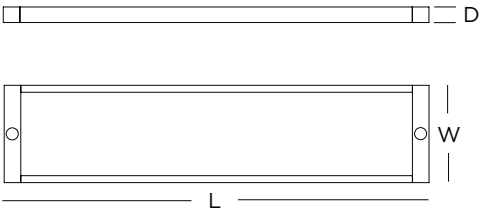
- SPLECL24 24" Interconnect cord
- SPLECL36 36" Interconnect cord
- SPLECL48 48" Interconnect cord
- SPLECL72 72" Interconnect cord



- SPLEDC Direct Connector



- LCX-PWR36 36W Power Supply
- LCX-PWR72 72W Power Supply





FLEXIBLE POWER
SUPPLY INSTALLATION

Versatile in-wall or under cabinet installation with wireless remote

The Slate Pro control can be easily installed in-wall, or surface-mounted for full installation flexibility. The versatile power supply can be hard-wired or plugged into any standard 110v outlet.

WIRELESS
BLUETOOTH
CONTROLLER

Easy to specify, Easy to install

- The SPLE Starter Kit can accommodate up to 72 watts of LED panels.
- Secondary power supplies can be added to expand system up to 144W total.
- Multiple systems can be linked together to work with a single controller.

panel size	panel watts	qty	total watts
14"	7	2	14.0
22"	11	3	33.0
40"	20.5	1	20.5
total			67.5 watts

