

ASTORIA Cylinder



CONSTRUCTION:

- Fabric shade
- White acrylic bottom diffuser with finial
- Decorative cut metal ring accents
- 36 in. standard stem kit includes 6 in., 12 in. and 18 in. sections for adjustability
- Additional stem sections available, maximum height 12 ft.
- 12 ft. of field adjustable wire included

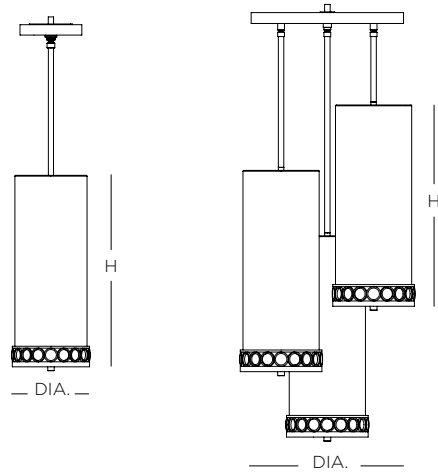
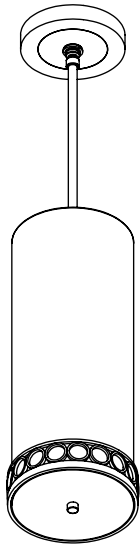
ELECTRICAL:

- 120V medium base sockets

CERTIFICATION:

- cULus Listed

ASTORIA Cylinder



Specifications			Medium Base
Size	DIA.	H	Sockets
07	6"	18"	1 x 60W max
08	14"	18"	3 x 60W max

Ordering

Model	Size	Lamping	Suggested - Finish*	Suggested - Fabric*	- Wood Canopy*
SATRP	07 = Cylinder 08 = Trio Cylinder	MB Medium Base Socket	PN Polished Nickel RB Hand-Rubbed Bronze	206 Ivory Silk Dupioni 301 Beige Linen 303 White Linen	EB Ebony WN Walnut

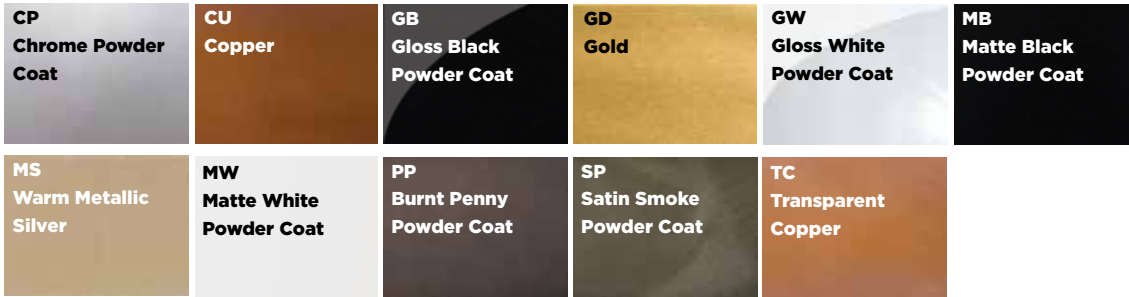
Example: SATRP07MB-PN-301-EB

All specifications and dimensions subject to change without notice.

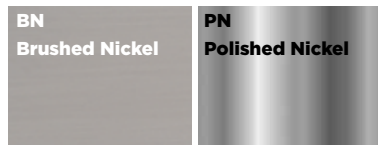
ASTORIA Cylinder

FINISHES

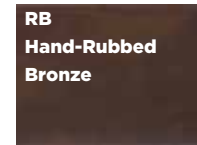
Painted Metal



Plated Metal



Etched Metal



FABRICS

Silks



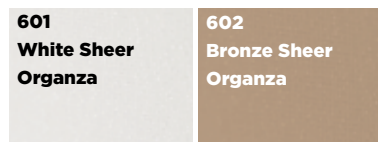
Linens



Vern Yip Fabrics



Organza



Woods

