
AFX

Client:

LumCAT: ARNC17LAJD4BKLB

Luminaire: LED LAMP

Report No:

Ballast type:

Test No:

Voltage(V): 119.990

LampCAT:

Current(A): 0.238

Lamp flux(lm): 2466.0

Power (W): 27.880

Number of Lamps: 1

PF: 0.978

Length(mm): 400

Width(mm): 360

Phm Type: C

Height(mm): 360

Photometric Results

Lumens(lm): 2466.01, Efficiency(%): 100.00% , Luminous Efficacy(lm/W): 88.45

Central intensity(cd): 235.959, Maximum intensity(cd): 235.959

Angle of maximum intensity: C=0.0 γ =0.0

Beam Angle(50%Imax): [C0/180]Total=N.A.

[C90/270]Total=N.A.

Field angle(10%Imax): [C0/180]Total=N.A.

[C90/270]Total=N.A.

Maximum s/h(1/2): C0_180=1.38 C90_270=1.49

Maximum s/h(1/4): C0_180=1.56 C90_270=1.66

Up flux rate of lamp(%): 48.48%

Down flux rate of lamp(%): 51.52%

Up flux rate of LUM(%): 48.48%

Down flux rate of LUM(%): 51.52%

CIE Type : General diffuse lighting

Output flux ratio in π solid angle : 27.162%

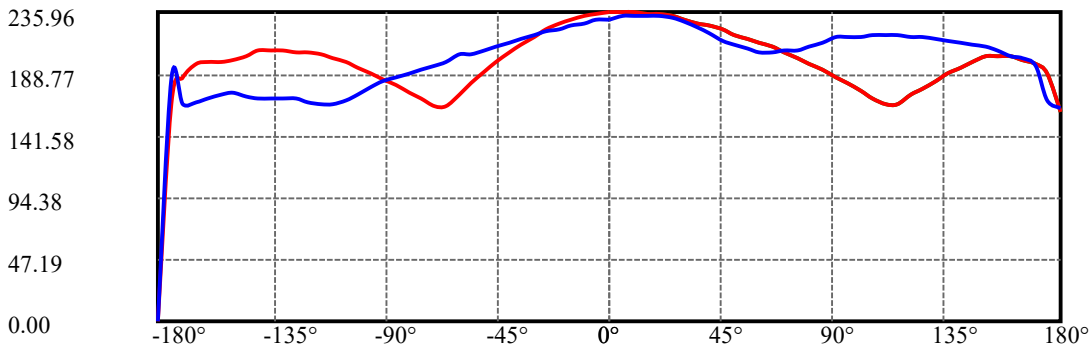
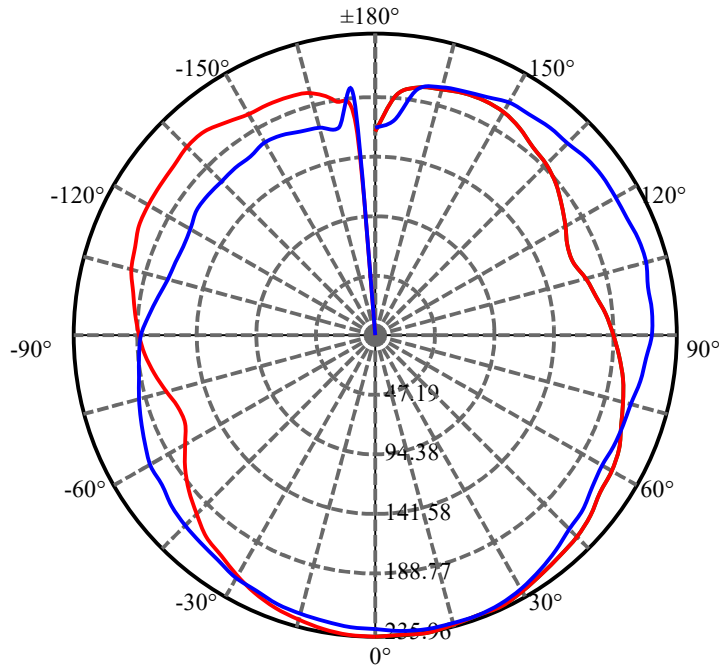
$\gamma(^{\circ})$	Average I(cd)	Zonal F(lm)	Sum F(lm)	Eff Flux(%)	Eff Sum(%)
0.0	232.146	0.000	0	0.00%	0.00%
5.0	231.996	5.549	5.549	0.23%	0.23%
10.0	231.436	16.578	22.127	0.67%	0.90%
15.0	230.277	27.388	49.516	1.11%	2.01%
20.0	228.520	37.811	87.327	1.53%	3.54%
25.0	225.978	47.668	134.995	1.93%	5.47%
30.0	222.464	56.751	191.746	2.30%	7.78%
35.0	218.389	64.919	256.665	2.63%	10.41%
40.0	213.978	72.137	328.802	2.93%	13.33%
45.0	208.969	78.312	407.114	3.18%	16.51%
50.0	204.146	83.476	490.59	3.39%	19.89%
55.0	199.548	87.777	578.366	3.56%	23.45%
60.0	196.109	91.455	669.821	3.71%	27.16%
65.0	192.894	94.567	764.389	3.83%	31.00%
70.0	190.614	97.107	861.495	3.94%	34.93%
75.0	189.791	99.432	960.927	4.03%	38.97%
80.0	190.315	101.706	1062.633	4.12%	43.09%
85.0	190.576	103.497	1166.13	4.20%	47.29%
90.0	190.576	104.363	1270.493	4.23%	51.52%
95.0	190.016	104.209	1374.702	4.23%	55.75%
100.0	189.006	102.989	1477.692	4.18%	59.92%
105.0	188.034	100.886	1578.577	4.09%	64.01%
110.0	187.848	98.249	1676.827	3.98%	68.00%
115.0	188.857	95.384	1772.211	3.87%	71.87%
120.0	189.866	92.068	1864.279	3.73%	75.60%
125.0	191.511	88.154	1952.433	3.57%	79.17%
130.0	192.819	83.566	2035.999	3.39%	82.56%
135.0	193.941	78.151	2114.15	3.17%	85.73%
140.0	194.988	72.013	2186.163	2.92%	88.65%
145.0	195.287	65.114	2251.277	2.64%	91.29%
150.0	194.838	57.449	2308.726	2.33%	93.62%
155.0	192.558	49.025	2357.751	1.99%	95.61%
160.0	190.576	40.184	2397.935	1.63%	97.24%
165.0	187.474	31.157	2429.092	1.26%	98.50%
170.0	175.474	21.530	2450.621	0.87%	99.38%
175.0	168.782	12.315	2462.937	0.50%	99.88%
180.0	88.298	3.073	2466.01	0.12%	100.00%

ZONAL LUMEN SUMMARY

Zone	Lumens	%Lamp	%Fixt
0-30	191.75	7.78%	7.78%
0-40	328.80	13.33%	13.33%
0-60	669.82	27.16%	27.16%
0-90	1270.49	51.52%	51.52%
0-120	1864.28	75.60%	75.60%
0-180	2466.01	100.00%	100.00%
60-90	600.67	24.36%	24.36%
90-120	593.79	24.08%	24.08%
90-130	765.51	31.04%	31.04%
90-150	1038.23	42.10%	42.10%
90-180	1192.44	48.36%	48.36%
0-126.22	1972.81	80.00%	80.00%

ZONAL LUMEN SUMMARY

0-10	22.13
10-20	65.20
20-30	104.42
30-40	137.06
40-50	161.79
50-60	179.23
60-70	191.67
70-80	201.14
80-90	207.86
90-100	207.20
100-110	199.14
110-120	187.45
120-130	171.72
130-140	150.16
140-150	122.56
150-160	89.21
160-170	52.69
170-180	12.32



C0(Max): —————

C0/C180: —————

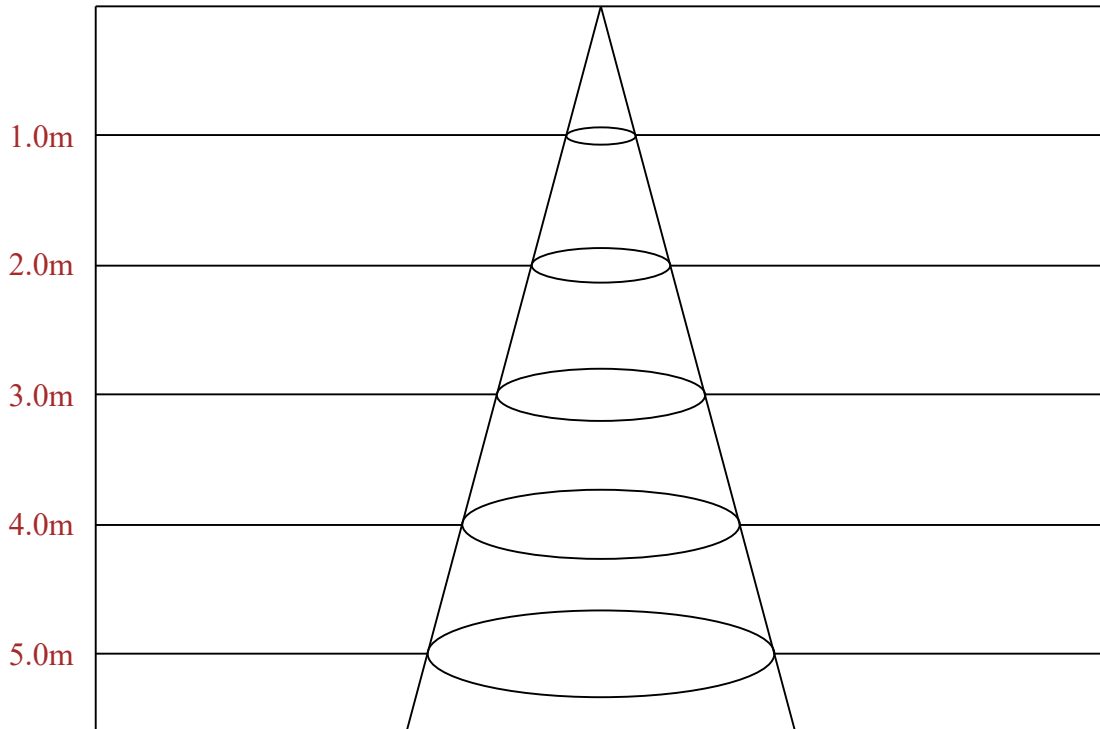
C90/C270: —————

Field angle(10%Imax):C0/180Left:0.0 Right:0.0

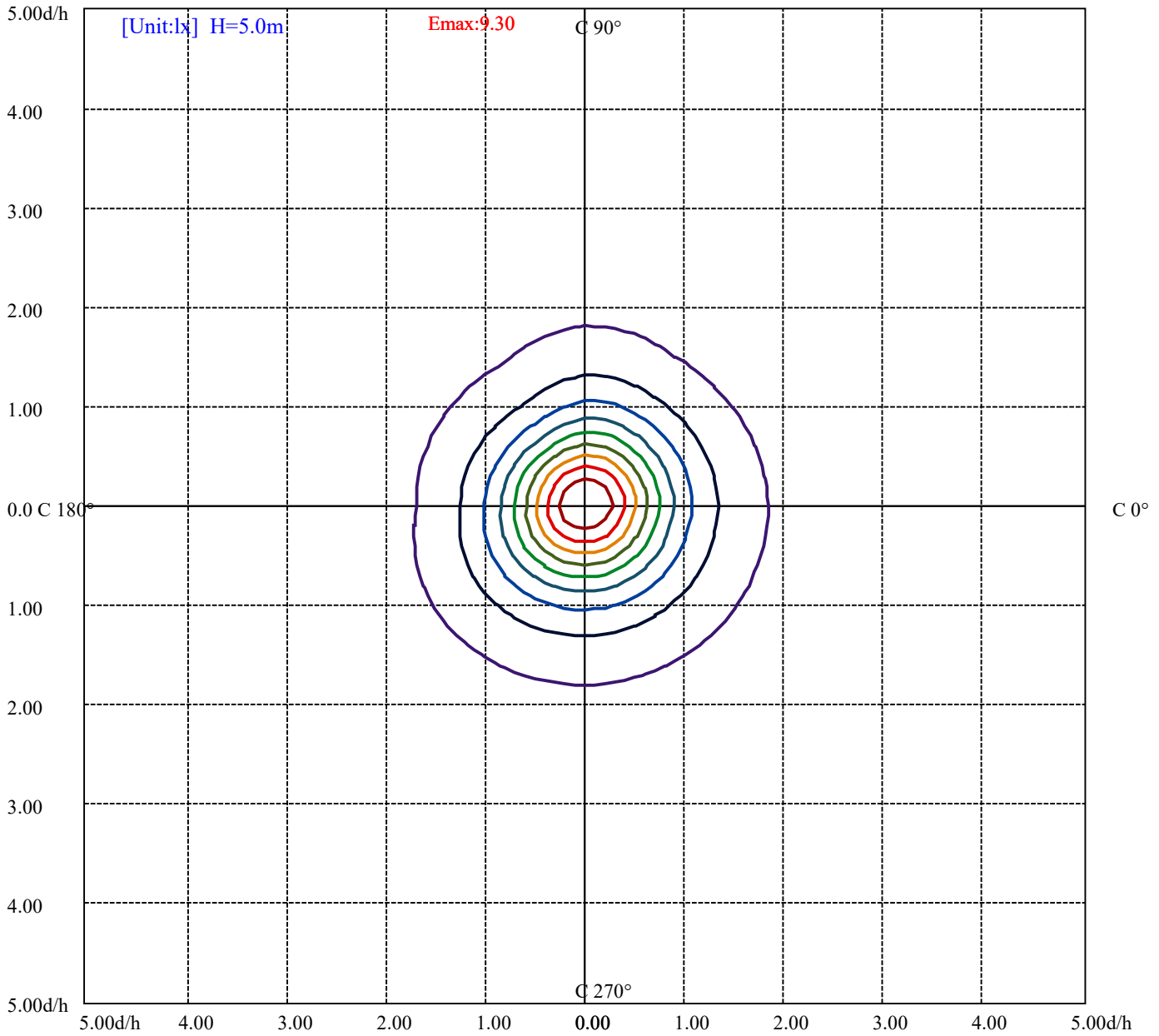
:C90/270Left:0.0 Right:0.0

Beam Angle(50%Imax):C0/180Left:0.0 Right:0.0

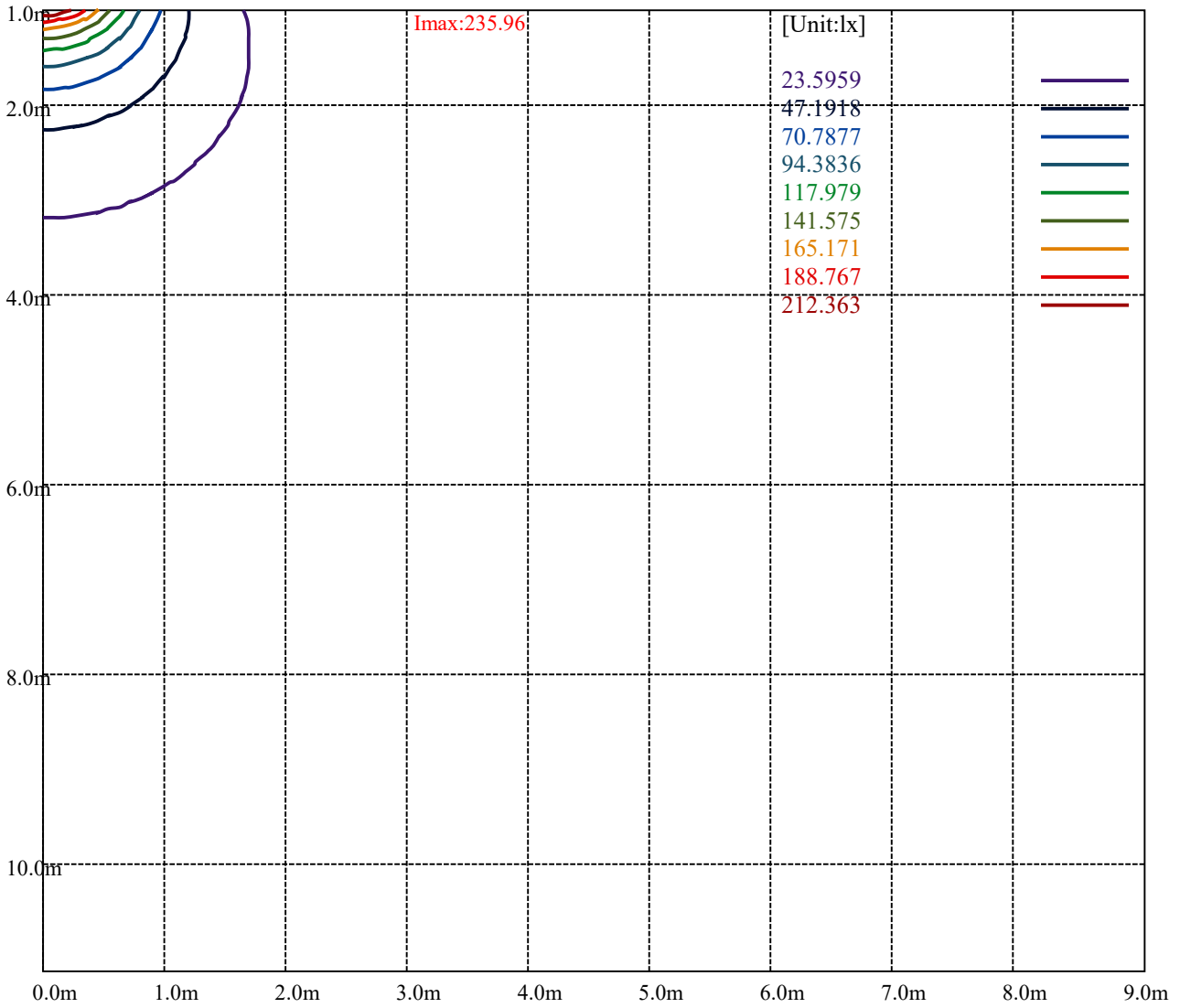
:C90/270Left:0.0 Right:0.0



Max , Ave Beam angle of C0 plane 180.00



(10%Emax) 0.929852	—
(20%Emax) 1.8597	—
(30%Emax) 2.789552	—
(40%Emax) 3.7194	—
(50%Emax) 4.64924	—
(60%Emax) 5.57912	—
(70%Emax) 6.50896	—
(80%Emax) 7.4388	—
(90%Emax) 8.36864	—



Luminance Table

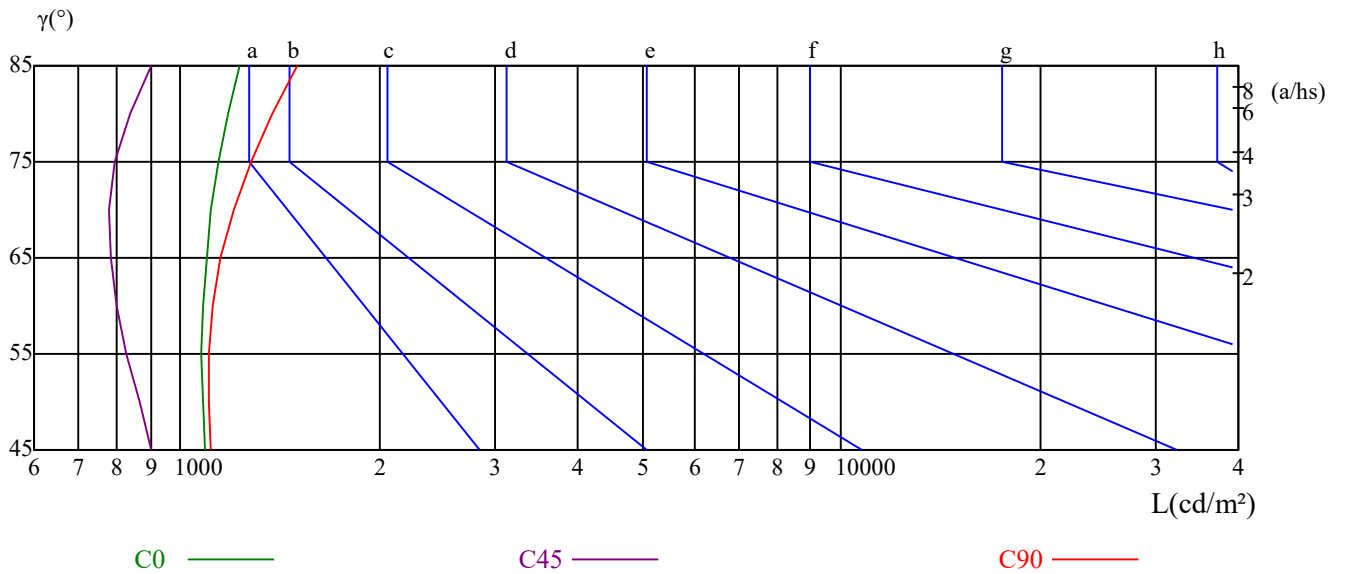
γ	45	50	55	60	65	70	75	80	85
C0	1093	1079	1074	1081	1097	1113	1140	1178	1231
C45	902	865	826	802	786	781	797	841	900
C90	1108	1104	1103	1115	1152	1206	1276	1375	1501

L(Hor)(65)	L(Ver)(65)	L45(65)	L(Hor)(75)	L(Ver)(75)	L45(75)	L(Hor)(85)	L(Ver)(85)	L45(85)
3074	3317	3151	4971	5356	5061	14833	15870	15173

Glare Table

Glare	Quality	Service Values Illuminance(lx)							
1.15	A	2000	1000	500	<=300				
1.5	B		2000	1000	500	<=300			
1.85	C			2000	1000	500	<=300		
2.2	D				2000	1000	500	<=300	
2.55	E					2000	1000	500	<=300
		a	b	c	d	e	f	g	h

Luminance Limiting Curve



RHOCC	80			70			50			30			10			0
RHOW	50	30	10	50	30	10	50	30	10	50	30	10	50	30	10	0
RCR	COEFFICIENTS OF UTILIZATION RHOFC=20 CU															
0	1.08	1.08	1.08	0.99	0.99	0.99	0.84	0.84	0.84	0.70	0.70	0.70	0.58	0.58	0.58	0.52
1	0.88	0.83	0.78	0.81	0.76	0.72	0.68	0.64	0.61	0.56	0.53	0.50	0.45	0.43	0.41	0.35
2	0.75	0.67	0.61	0.69	0.62	0.56	0.57	0.52	0.48	0.47	0.43	0.39	0.37	0.34	0.31	0.27
3	0.65	0.56	0.49	0.59	0.52	0.45	0.49	0.43	0.38	0.40	0.36	0.32	0.32	0.28	0.25	0.21
4	0.57	0.47	0.40	0.52	0.44	0.38	0.43	0.37	0.32	0.35	0.30	0.26	0.28	0.24	0.21	0.17
5	0.50	0.41	0.34	0.46	0.38	0.32	0.38	0.32	0.27	0.31	0.26	0.22	0.25	0.21	0.18	0.14
6	0.45	0.36	0.29	0.41	0.33	0.27	0.34	0.28	0.23	0.28	0.23	0.19	0.22	0.18	0.15	0.12
7	0.40	0.31	0.25	0.37	0.29	0.23	0.31	0.25	0.20	0.25	0.20	0.17	0.20	0.16	0.13	0.11
8	0.36	0.28	0.22	0.33	0.26	0.20	0.28	0.22	0.18	0.23	0.18	0.15	0.18	0.15	0.12	0.09
9	0.33	0.25	0.19	0.30	0.23	0.18	0.26	0.20	0.15	0.21	0.16	0.13	0.17	0.13	0.10	0.08
10	0.30	0.22	0.17	0.28	0.21	0.16	0.24	0.18	0.14	0.20	0.15	0.12	0.16	0.12	0.09	0.07

AFX ARNC17LAJD4BKLB

Intensity data(cd)

C/γ(°)	0.0	5.0	10.0	15.0	20.0	25.0	30.0	35.0	40.0
0.0	235.96	235.96	235.96	235.06	234.16	233.27	230.58	227.88	225.19
15.0	234.16	235.06	235.06	235.06	235.06	233.27	231.47	227.88	224.30
30.0	233.27	234.16	235.06	235.06	235.06	233.27	230.58	226.99	222.50
45.0	232.37	233.27	234.16	235.06	234.16	233.27	230.58	226.99	221.60
60.0	232.37	233.27	234.16	234.16	234.16	234.16	231.47	227.88	223.40
75.0	231.47	233.27	233.27	234.16	234.16	233.27	231.47	228.78	225.19
90.0	230.58	232.37	233.27	233.27	233.27	231.47	228.78	224.30	219.81
105.0	230.58	232.37	232.37	232.37	230.58	226.09	220.71	214.43	207.25
120.0	231.47	231.47	232.37	230.58	227.88	223.40	215.32	206.35	195.59
135.0	231.47	231.47	231.47	229.68	226.99	221.60	213.53	203.66	194.69
150.0	230.58	231.47	231.47	229.68	223.40	220.71	214.43	206.35	197.38
165.0	231.47	230.58	230.58	228.78	226.99	222.50	217.12	209.94	201.87
180.0	235.96	235.06	233.27	230.58	226.99	222.50	216.22	210.84	205.45
195.0	234.16	233.27	232.37	229.68	226.99	224.30	221.60	218.02	213.53
210.0	233.27	232.37	230.58	229.68	226.99	226.09	223.40	220.71	218.02
225.0	232.37	231.47	229.68	227.88	226.09	224.30	222.50	219.81	218.02
240.0	232.37	230.58	228.78	226.99	225.19	222.50	220.71	218.91	216.22
255.0	231.47	229.68	227.88	226.09	224.30	221.60	218.91	216.22	213.53
270.0	230.58	229.68	227.88	226.09	223.40	220.71	218.02	215.32	212.63
285.0	230.58	229.68	227.88	226.09	224.30	220.71	218.02	215.32	215.32
300.0	231.47	229.68	228.78	226.99	226.09	221.60	218.91	217.12	213.53
315.0	231.47	230.58	228.78	226.99	225.19	223.40	220.71	218.02	215.32
330.0	230.58	230.58	229.68	227.88	226.09	224.30	221.60	219.81	218.02
345.0	231.47	230.58	229.68	228.78	226.99	225.19	222.50	219.81	217.12
360.0	235.96	235.96	235.96	235.06	234.16	233.27	230.58	227.88	225.19

C/γ(°)	45.0	50.0	55.0	60.0	65.0	70.0	75.0	80.0	85.0
0.0	222.50	218.91	215.32	212.63	209.94	205.45	200.97	196.48	192.00
15.0	220.71	215.32	210.84	207.25	203.66	200.07	196.48	192.89	190.20
30.0	217.12	211.74	204.56	200.07	193.79	190.20	189.31	187.51	188.41
45.0	215.32	208.15	199.17	192.00	185.72	180.33	178.54	181.23	184.82
60.0	216.22	208.15	200.07	191.10	182.13	173.16	174.05	180.33	186.61
75.0	220.71	215.32	209.94	204.56	200.07	197.38	197.38	199.17	201.87
90.0	214.43	211.74	208.15	205.45	205.45	206.35	207.25	209.94	212.63
105.0	198.28	192.00	188.41	187.51	189.31	192.89	196.48	201.87	207.25
120.0	184.82	174.05	165.08	165.98	170.46	175.85	181.23	187.51	192.89
135.0	183.92	176.74	171.36	168.67	169.57	171.36	174.95	180.33	185.72
150.0	188.41	181.23	175.85	171.36	168.67	167.77	170.46	175.85	180.33
165.0	194.69	188.41	181.23	174.95	168.67	164.18	163.29	165.08	167.77
180.0	198.28	190.20	181.23	172.26	164.18	164.18	169.57	174.95	180.33
195.0	208.15	201.87	196.48	192.00	188.41	187.51	187.51	190.20	192.89
210.0	215.32	211.74	209.04	206.35	204.56	201.87	200.07	199.17	198.28
225.0	216.22	214.43	212.63	209.94	207.25	202.76	199.17	195.59	191.10
240.0	214.43	211.74	209.94	207.25	202.76	197.38	192.00	186.61	181.23
255.0	211.74	209.04	206.35	203.66	199.17	194.69	189.31	188.41	179.44
270.0	209.94	207.25	203.66	203.66	198.28	194.69	192.00	188.41	185.72
285.0	209.94	206.35	203.66	200.97	198.28	196.48	194.69	192.89	192.00
300.0	210.84	208.15	205.45	203.66	200.97	199.17	197.38	196.48	193.79
315.0	212.63	209.94	208.15	206.35	204.56	202.76	201.87	200.97	200.07
330.0	215.32	213.53	210.84	209.04	207.25	205.45	202.76	200.97	198.28
345.0	215.32	213.53	211.74	209.94	206.35	202.76	198.28	194.69	190.20
360.0	222.50	218.91	215.32	212.63	209.94	205.45	200.97	196.48	192.00

AFX ARNC17LAJD4BKLB

Intensity data(cd)

C/γ(°)	90.0	95.0	100.0	105.0	110.0	115.0	120.0	125.0	130.0
0.0	186.61	181.23	175.85	170.46	165.08	165.98	172.26	177.64	183.92
15.0	187.51	184.82	182.13	180.33	178.54	178.54	178.54	179.44	180.33
30.0	188.41	189.31	190.20	191.10	192.89	192.00	189.31	186.61	184.82
45.0	188.41	192.89	195.59	200.07	203.66	205.45	203.66	200.07	196.48
60.0	192.89	198.28	203.66	208.15	211.74	214.43	214.43	212.63	209.94
75.0	205.45	209.04	212.63	215.32	218.02	220.71	221.60	219.81	217.12
90.0	216.22	217.12	217.12	218.91	218.91	218.02	217.12	216.22	215.32
105.0	210.84	212.63	211.74	211.74	210.84	209.94	208.15	207.25	207.25
120.0	197.38	200.97	200.97	199.17	198.28	197.38	195.59	195.59	194.69
135.0	191.10	192.89	190.20	186.61	184.82	183.03	183.03	183.03	182.13
150.0	182.13	181.23	180.33	179.44	179.44	179.44	180.33	181.23	182.13
165.0	171.36	174.05	176.74	178.54	182.13	184.82	187.51	188.41	189.31
180.0	184.82	189.31	192.89	197.38	200.07	203.66	204.56	205.45	206.35
195.0	195.59	198.28	200.97	203.66	206.35	208.15	209.04	209.94	209.94
210.0	198.28	198.28	198.28	199.17	199.17	201.87	204.56	207.25	209.04
225.0	187.51	183.92	180.33	178.54	179.44	183.92	184.82	195.59	200.97
240.0	175.85	170.46	168.67	159.70	160.60	168.67	176.74	183.92	189.31
255.0	175.85	172.26	168.67	166.88	165.98	167.77	172.26	176.74	178.54
270.0	183.03	178.54	173.16	168.67	165.98	165.08	166.88	170.46	170.46
285.0	185.72	180.33	174.95	170.46	165.08	162.39	161.49	162.39	165.98
300.0	190.20	185.72	180.33	175.85	170.46	165.98	162.39	162.39	168.67
315.0	198.28	194.69	191.10	187.51	185.72	183.92	183.92	186.61	189.31
330.0	195.59	193.79	192.00	190.20	189.31	191.10	192.89	197.38	200.07
345.0	184.82	180.33	177.64	174.95	175.85	180.33	185.72	190.20	195.59
360.0	186.61	181.23	175.85	170.46	165.08	165.98	172.26	177.64	183.92
C/γ(°)	135.0	140.0	145.0	150.0	155.0	160.0	165.0	170.0	175.0
0.0	188.41	192.89	197.38	201.87	201.87	201.87	199.17	196.48	188.41
15.0	181.23	183.92	186.61	189.31	188.41	186.61	185.72	183.03	180.33
30.0	182.13	183.03	185.72	186.61	183.03	178.54	175.85	171.36	167.77
45.0	193.79	192.00	192.00	192.00	187.51	181.23	177.64	168.67	161.49
60.0	206.35	204.56	203.66	202.76	197.38	192.00	189.31	177.64	161.49
75.0	213.53	210.84	209.04	208.15	205.45	201.87	198.28	187.51	163.29
90.0	213.53	212.63	210.84	209.94	206.35	202.76	200.97	194.69	168.67
105.0	207.25	207.25	207.25	202.76	199.17	197.38	198.28	194.69	171.36
120.0	194.69	195.59	193.79	190.20	185.72	186.61	186.61	183.03	170.46
135.0	183.03	183.92	182.13	177.64	172.26	172.26	171.36	167.77	166.88
150.0	183.03	184.82	182.13	176.74	170.46	167.77	165.98	156.11	155.21
165.0	190.20	192.00	190.20	185.72	181.23	182.13	178.54	160.60	151.62
180.0	207.25	207.25	202.76	199.17	198.28	198.28	196.48	185.72	165.08
195.0	211.74	212.63	212.63	207.25	204.56	203.66	201.87	182.13	155.21
210.0	209.94	209.94	209.04	208.15	206.35	203.66	200.97	174.05	163.29
225.0	204.56	202.76	200.97	200.07	199.17	197.38	190.20	165.98	176.74
240.0	192.00	192.00	192.00	191.10	186.61	184.82	176.74	157.90	184.82
255.0	179.44	179.44	179.44	178.54	176.74	171.36	165.08	156.11	188.41
270.0	170.46	170.46	171.36	174.05	173.16	169.57	167.77	165.08	184.82
285.0	168.67	171.36	174.95	178.54	180.33	181.23	180.33	177.64	175.85
300.0	175.85	182.13	186.61	192.00	193.79	194.69	193.79	182.13	165.08
315.0	194.69	198.28	200.97	203.66	205.45	205.45	202.76	181.23	154.32
330.0	203.66	207.25	209.04	210.84	210.84	209.04	201.87	174.05	157.01
345.0	199.17	202.76	206.35	209.04	207.25	203.66	193.79	167.77	173.16
360.0	188.41	192.89	197.38	201.87	201.87	201.87	199.17	196.48	188.41

Intensity data(cd)

C/ γ (°)	180.0
0.0	159.70
15.0	181.23
30.0	189.31
45.0	192.00
60.0	189.31
75.0	176.74
90.0	162.39
105.0	156.11
120.0	163.29
135.0	175.85
150.0	184.82
165.0	188.41
180.0	0.00
195.0	0.00
210.0	0.00
225.0	0.00
240.0	0.00
255.0	0.00
270.0	0.00
285.0	0.00
300.0	0.00
315.0	0.00
330.0	0.00
345.0	0.00
360.0	159.70