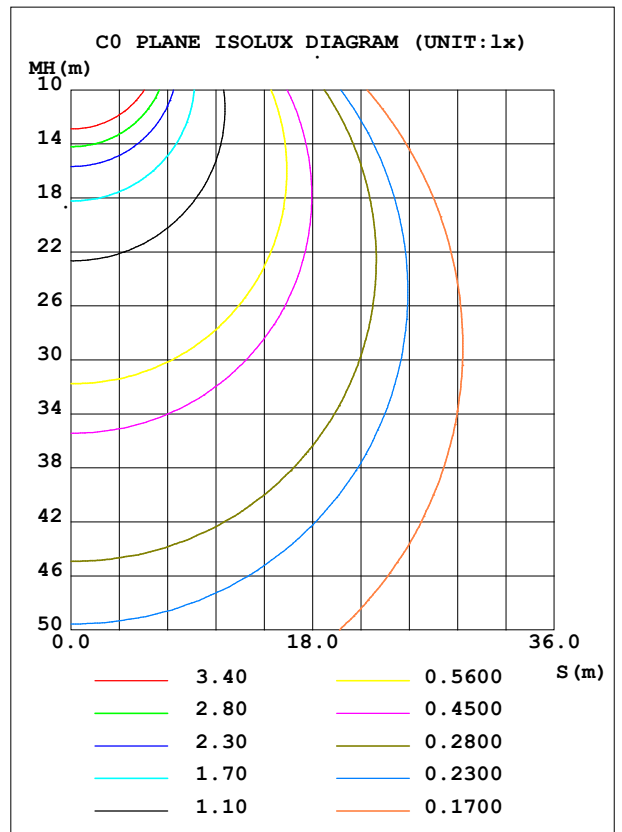
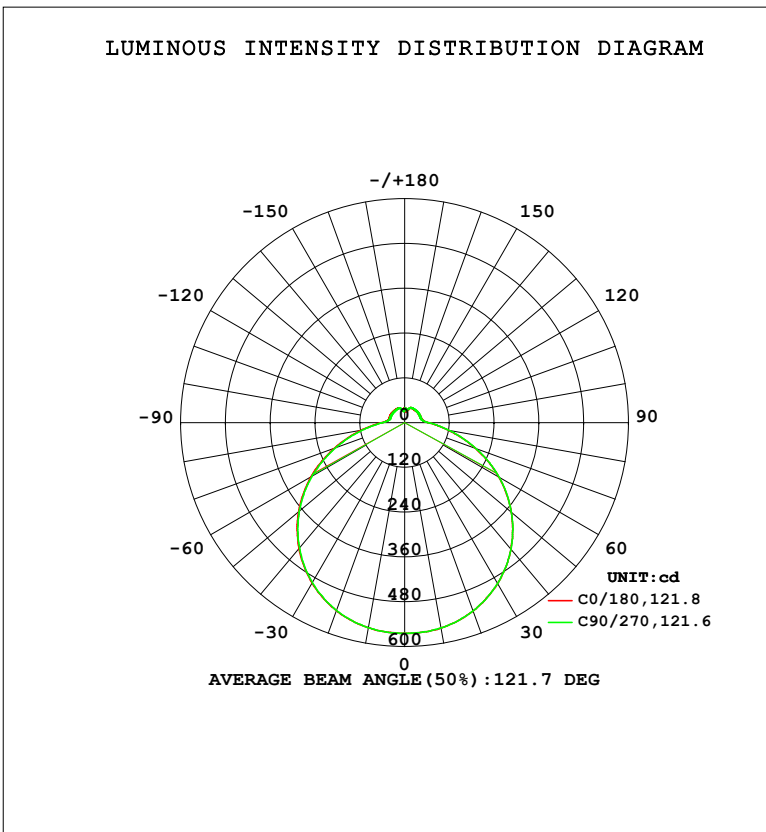


LUMINAIRE PHOTOMETRIC TEST REPORT

Test:U:119.91V I:0.2181A P:24.189W PF:0.9248 Freq:60.00Hz Lamp Flux:2138.99x1 lm		
NAME: 15寸北美吸顶灯	TYPE: 吸顶灯	WEIGHT: 1
SPEC.: /	DIM.: d=0.38	SERIAL No.: SY2500238-3#2700K
MFR.: 研发中心	SUR.: d=0.38	Shielding Angle: /

DATA OF LAMP		PHOTOMETRIC DATA				Eff: 88.43 lm/W
MODEL	2700K	I <sub>max</sub> (cd)	564.9	S/MH (C0/180)	1.30	
NOMINAL POWER (W)	/	LOR (%)	100.0	S/MH (C90/270)	1.30	
RATED VOLTAGE (V)	120	TOTAL FLUX (lm)	2139.0	η UP, DN (C0-180)	6.7, 43.7	
NOMINAL FLUX (lm)	2138.99	CIE CLASS	SEMI-D.	η UP, DN (C180-360)	6.4, 43.2	
LAMPS INSIDE	1	η up (%)	13.1	CIBSE SHR NOM	1.50	
TEST VOLTAGE (V)	/	η down (%)	86.9	CIBSE SHR MAX	1.50	



C Range: 0 - 360DEG  
 C Interval: 22.5DEG  
 Test Speed: HIGH  
 Temperature: 25.3°C  
 Operators: linye  
 Test Date: 2026-03-05

γ Range: 0 - 180DEG  
 γ Interval: 0.5DEG  
 Test System: EVERFINE GO-R5000\_V2 SYSTEM V2.00.459  
 Humidity: 58.9%  
 Test Distance: 26.000m [K=1.0000]  
 Remarks:

ZONAL FLUX DIAGRAM

ZONAL FLUX DIAGRAM:

γ	C0	C45	C90	C135	C180	C225	C270	C315	γ	Φ zone	Φ total	%lum, lamp
5	563.3	563.4	563.2	563.0	563.1	563.0	562.9	563.3	0- 5	13.48	13.48	0.63,0.63
10	558.7	558.3	558.7	558.4	558.1	558.0	558.2	559.1	5- 10	40.14	53.62	2.51,2.51
15	550.0	549.6	550.1	549.4	549.2	548.3	549.1	549.7	10- 15	65.73	119.4	5.58,5.58
20	537.1	536.4	536.4	535.0	535.8	534.6	535.3	536.4	15- 20	89.48	208.8	9.76,9.76
25	519.2	520.0	519.2	517.5	517.8	516.4	517.0	519.4	20- 25	110.6	319.5	14.9,14.9
30	498.5	498.4	497.9	496.1	496.1	494.8	495.0	497.3	25- 30	128.5	448.0	20.9,20.9
35	473.0	473.0	472.4	470.5	470.6	468.4	469.0	470.9	30- 35	142.5	590.5	27.6,27.6
40	443.2	443.7	443.2	440.9	440.3	439.3	438.7	441.3	35- 40	152.2	742.7	34.7,34.7
45	409.6	410.8	409.9	407.8	407.7	405.9	405.6	408.0	40- 45	157.3	900.0	42.1,42.1
50	373.1	374.2	373.7	371.7	371.0	369.4	368.8	371.1	45- 50	157.5	1058	49.4,49.4
55	333.5	334.6	333.9	332.1	331.3	329.4	328.6	330.7	50- 55	152.9	1210	56.6,56.6
60	291.0	293.1	292.5	289.8	289.4	287.0	286.1	288.4	55- 60	143.7	1354	63.3,63.3
65	247.0	248.9	248.3	245.9	245.2	242.7	241.3	243.5	60- 65	130.0	1484	69.4,69.4
70	202.3	204.3	203.6	201.3	200.6	197.6	196.2	198.9	65- 70	112.8	1597	74.7,74.7
75	158.8	161.0	160.4	158.1	157.2	154.2	152.8	155.0	70- 75	93.35	1690	79,79
80	119.5	121.2	120.9	118.9	117.7	114.8	113.4	115.7	75- 80	73.36	1764	82.5,82.5
85	86.99	88.42	88.10	86.40	84.64	82.45	81.30	82.99	80- 85	54.81	1818	85,85
90	64.00	64.51	64.10	62.79	62.09	60.61	59.85	61.24	85- 90	39.95	1858	86.9,86.9
95	52.53	52.57	52.08	51.31	50.27	49.49	48.73	49.73	90- 95	30.64	1889	88.3,88.3
100	46.99	46.89	46.38	45.85	44.82	44.25	43.56	44.41	95-100	25.97	1915	89.5,89.5
105	44.93	44.78	44.44	44.05	43.54	42.68	41.96	42.77	100-105	23.70	1939	90.6,90.6
110	44.50	44.59	44.20	43.91	43.64	42.87	42.01	42.77	105-110	22.77	1962	91.7,91.7
115	44.40	44.59	44.25	44.10	44.02	42.92	42.01	42.77	110-115	22.08	1984	92.7,92.7
120	44.40	44.59	44.44	44.24	44.11	42.78	41.96	42.63	115-120	21.22	2005	93.7,93.7
125	44.40	44.59	44.59	44.35	44.02	42.63	41.87	42.58	120-125	20.17	2025	94.7,94.7
130	44.11	44.59	44.73	44.44	43.63	42.54	41.87	42.38	125-130	18.96	2044	95.6,95.6
135	43.78	44.30	44.73	44.44	43.45	42.54	41.87	42.29	130-135	17.57	2062	96.4,96.4
140	43.40	43.97	44.58	44.44	43.45	42.49	41.87	42.29	135-140	16.06	2078	97.1,97.1
145	43.35	43.78	44.44	44.24	43.45	42.54	42.15	42.62	140-145	14.45	2092	97.8,97.8
150	43.35	43.73	44.30	44.20	43.45	42.59	42.39	42.77	145-150	12.76	2105	98.4,98.4
155	43.40	43.69	44.06	44.20	43.35	42.59	42.34	42.81	150-155	10.97	2116	98.9,98.9
160	43.13	43.12	42.83	43.72	42.44	42.44	42.01	41.87	155-160	9.045	2125	99.3,99.3
165	36.82	37.54	38.38	39.13	37.52	36.94	37.30	36.63	160-165	6.650	2131	99.6,99.6
170	32.86	33.77	34.97	35.44	34.42	34.34	34.24	33.14	165-170	4.288	2136	99.8,99.8
175	36.47	38.49	38.06	37.18	37.58	35.74	31.92	31.21	170-175	2.360	2138	100,100
180	38.67	38.77	38.24	38.00	38.86	38.68	38.58	38.00	175-180	0.9024	2139	100,100
DEG	LUMINOUS INTENSITY:cd								UNIT:lm			

Conical surface Flux(90deg): 899.97 lm

%lum = 42.1%  
 %lamp = 42.1%

Conical surface Flux(120deg): 1354.1 lm

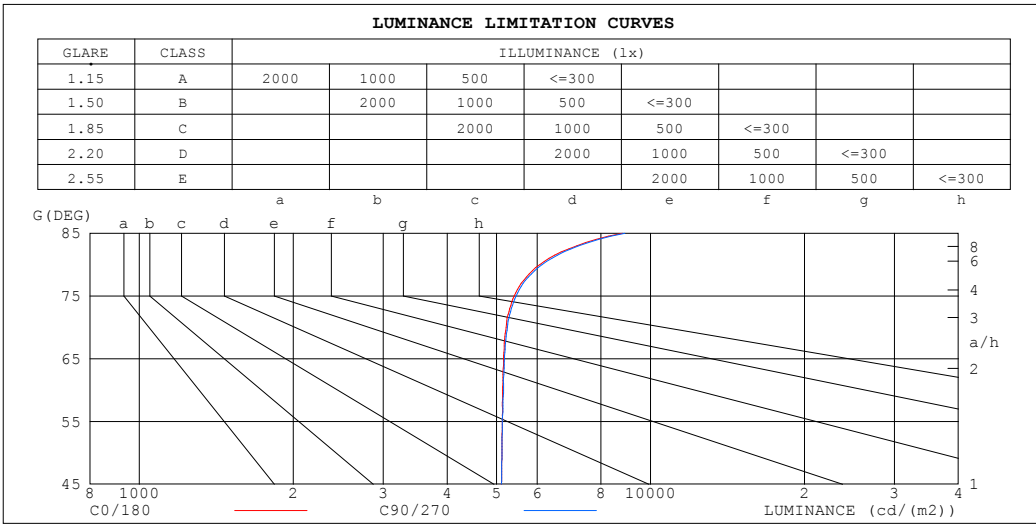
%lum = 63.3%  
 %lamp = 63.3%

C Range: 0 - 360DEG  
 C Interval: 22.5DEG  
 Test Speed: HIGH  
 Temperature:25.3°C  
 Operators:linye  
 Test Date:2026-03-05

γ Range: 0 - 180DEG  
 γ Interval: 0.5DEG  
 Test System:EVERFINE GO-R5000\_V2 SYSTEM V2.00.459  
 Humidity:58.9%  
 Test Distance:26.000m [K=1.0000]  
 Remarks:

**LUMINANCE LIMITATION CURVES**

Test:U:119.91V I:0.2181A P:24.189W PF:0.9248 Freq:60.00Hz Lamp Flux:2138.99x1 lm		
NAME: 15寸北美吸顶灯	TYPE: 吸顶灯	WEIGHT: 1
SPEC.: /	DIM.: d=0.38	SERIAL No.: SY2500238-3#2700K
MFR.: 研发中心	SUR.: d=0.38	Shielding Angle: /



LUMINANCE cd/(m2)		
G (DEG)	C0/180	C90/270
85	8803	8909
80	6069	6135
75	5410	5460
70	5216	5247
65	5155	5179
60	5133	5155
55	5128	5130
50	5120	5123
45	5109	5108

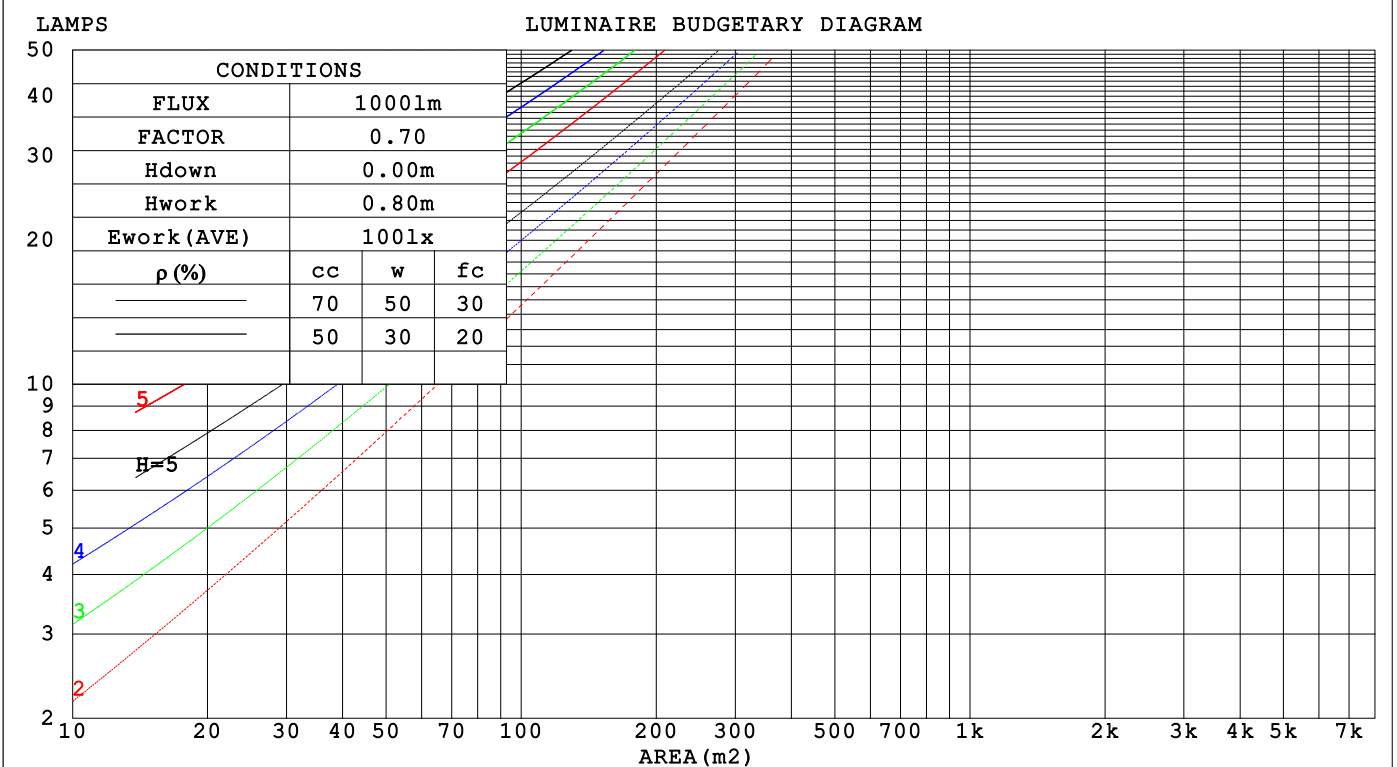
C Range: 0 - 360DEG  
 C Interval: 22.5DEG  
 Test Speed: HIGH  
 Temperature:25.3°C  
 Operators:linye  
 Test Date:2026-03-05

γ Range: 0 - 180DEG  
 γ Interval: 0.5DEG  
 Test System:EVERFINE GO-R5000\_V2 SYSTEM V2.00.459  
 Humidity:58.9%  
 Test Distance:26.000m [K=1.0000]  
 Remarks:

CU AND LUMINAIRE BUDGETARY ESTIMATE DIAGRAM

Test:U:119.91V I:0.2181A P:24.189W PF:0.9248 Freq:60.00Hz Lamp Flux:2138.99x1 lm		
NAME: 15寸北美吸顶灯	TYPE: 吸顶灯	WEIGHT: 1
SPEC.: /	DIM.: d=0.38	SERIAL No.: SY2500238-3#2700K
MFR.: 研发中心	SUR.: d=0.38	Shielding Angle: /

ρcc	80%			70%			50%			30%			10%			0
ρw	50%	30%	10%	50%	30%	10%	50%	30%	10%	50%	30%	10%	50%	30%	10%	0
ρfc	20%			20%			20%			20%			20%			0
RCR	RCR:Room Cavity Ratio															
	Coefficients of Utilization(CU)															
0.0	1.16	1.16	1.16	1.12	1.12	1.12	1.04	1.04	1.04	.97	.97	.97	.90	.90	.90	.87
1.0	.99	.94	.90	.95	.91	.87	.89	.85	.82	.83	.80	.77	.77	.75	.73	.70
2.0	.85	.78	.72	.82	.76	.70	.77	.71	.67	.71	.67	.63	.67	.63	.60	.57
3.0	.75	.66	.59	.72	.64	.58	.67	.61	.55	.63	.57	.53	.58	.54	.50	.47
4.0	.66	.57	.50	.63	.55	.49	.59	.52	.47	.55	.49	.45	.52	.47	.43	.40
5.0	.58	.49	.42	.57	.48	.42	.53	.46	.40	.50	.43	.38	.46	.41	.37	.34
6.0	.52	.43	.37	.51	.42	.36	.48	.40	.35	.45	.38	.33	.42	.36	.32	.30
7.0	.47	.38	.32	.46	.38	.32	.43	.36	.31	.41	.34	.29	.38	.33	.28	.26
8.0	.43	.35	.29	.42	.34	.28	.39	.32	.27	.37	.31	.26	.35	.29	.25	.23
9.0	.39	.31	.26	.38	.31	.25	.36	.29	.24	.34	.28	.24	.32	.27	.23	.21
10.0	.36	.28	.23	.35	.28	.23	.33	.27	.22	.32	.26	.21	.30	.25	.21	.19



C Range: 0 - 360DEG  
 C Interval: 22.5DEG  
 Test Speed: HIGH  
 Temperature:25.3°C  
 Operators:linye  
 Test Date:2026-03-05

γ Range: 0 - 180DEG  
 γ Interval: 0.5DEG  
 Test System:EVERFINE GO-R5000\_V2 SYSTEM V2.00.459  
 Humidity:58.9%  
 Test Distance:26.000m [K=1.0000]  
 Remarks:

**WEC AND CCEC**

Test:U:119.91V I:0.2181A P:24.189W PF:0.9248 Freq:60.00Hz		
Lamp Flux:2138.99x1 lm		
NAME: 15寸北美吸顶灯	TYPE: 吸顶灯	WEIGHT: 1
SPEC.: /	DIM.: d=0.38	SERIAL No.: SY2500238-3#2700K
MFR.: 研发中心	SUR.: d=0.38	Shielding Angle: /

$\rho_{CC}$	80%			70%			50%			30%			10%			0
$\rho_w$	50%	30%	10%	50%	30%	10%	50%	30%	10%	50%	30%	10%	50%	30%	10%	0
$\rho_{fc}$	20%			20%			20%			20%			20%			0
RCR	RCR:Room Cavity Ratio						Wall Exitance Coefficients(WEC)									
0.0																
1.0	.343	.195	.062	.332	.189	.060	.311	.179	.057	.292	.168	.054	.274	.159	.051	
2.0	.309	.169	.052	.299	.165	.051	.280	.156	.048	.263	.148	.046	.247	.140	.044	
3.0	.280	.149	.045	.271	.145	.044	.255	.138	.042	.239	.131	.040	.224	.124	.038	
4.0	.256	.133	.039	.248	.130	.038	.232	.123	.037	.218	.117	.035	.205	.111	.034	
5.0	.234	.119	.035	.227	.117	.034	.213	.111	.033	.200	.106	.031	.188	.101	.030	
6.0	.216	.108	.031	.210	.106	.030	.197	.101	.029	.185	.096	.028	.174	.092	.027	
7.0	.200	.099	.028	.194	.097	.028	.183	.092	.027	.172	.088	.026	.162	.084	.025	
8.0	.187	.091	.026	.181	.089	.025	.171	.085	.024	.161	.081	.023	.151	.078	.023	
9.0	.174	.084	.024	.169	.083	.023	.160	.079	.022	.151	.076	.022	.142	.072	.021	
10.0	.164	.078	.022	.159	.077	.021	.150	.074	.021	.142	.070	.020	.134	.067	.019	

$\rho_{CC}$	80%			70%			50%			30%			10%			0
$\rho_w$	50%	30%	10%	50%	30%	10%	50%	30%	10%	50%	30%	10%	50%	30%	10%	0
$\rho_{fc}$	20%			20%			20%			20%			20%			0
RCR	RCR:Room Cavity Ratio						Ceiling Cavity Exitance Coefficients(CCEC)									
0.0	.290	.290	.290	.248	.248	.248	.169	.169	.169	.097	.097	.097	.031	.031	.031	
1.0	.283	.257	.232	.242	.220	.200	.166	.152	.138	.095	.088	.080	.031	.028	.026	
2.0	.276	.233	.197	.236	.201	.171	.162	.139	.119	.093	.081	.070	.030	.026	.023	
3.0	.268	.216	.175	.230	.187	.152	.158	.130	.106	.091	.076	.063	.029	.025	.021	
4.0	.261	.204	.160	.224	.176	.139	.154	.123	.098	.089	.072	.058	.029	.023	.019	
5.0	.253	.194	.149	.218	.167	.130	.150	.117	.092	.087	.069	.054	.028	.022	.018	
6.0	.246	.185	.142	.212	.161	.124	.146	.112	.087	.085	.066	.052	.027	.022	.017	
7.0	.239	.179	.136	.206	.155	.119	.142	.109	.084	.083	.064	.050	.027	.021	.017	
8.0	.233	.173	.132	.200	.150	.115	.139	.105	.082	.081	.062	.049	.026	.020	.016	
9.0	.227	.168	.129	.195	.146	.112	.135	.103	.080	.079	.061	.048	.026	.020	.016	
10.0	.221	.164	.126	.191	.143	.110	.132	.100	.078	.077	.059	.047	.025	.019	.015	

C Range: 0 - 360DEG  
 C Interval: 22.5DEG  
 Test Speed: HIGH  
 Temperature:25.3°C  
 Operators:linye  
 Test Date:2026-03-05

$\gamma$  Range: 0 - 180DEG  
 $\gamma$  Interval: 0.5DEG  
 Test System:EVERFINE GO-R5000\_V2 SYSTEM V2.00.459  
 Humidity:58.9%  
 Test Distance:26.000m [K=1.0000]  
 Remarks:

**UGR(Unified Glare Rating) Table**

Test:U:119.91V I:0.2181A P:24.189W PF:0.9248 Freq:60.00Hz										
Lamp Flux:2138.99x1 lm										
NAME: 15寸北美吸顶灯					TYPE: 吸顶灯			WEIGHT: 1		
SPEC.: /					DIM.: d=0.38			SERIAL No.: SY2500238-3#2700K		
MFR.: 研发中心					SUR.: d=0.38			Shielding Angle: /		
ceiling/cavity	0.7	0.7	0.5	0.5	0.3	0.7	0.7	0.5	0.5	0.3
walls	0.5	0.3	0.5	0.3	0.3	0.5	0.3	0.5	0.3	0.3
working plane	0.2	0.2	0.2	0.2	0.2	0.2	0.2	0.2	0.2	0.2
Room dimensions	Viewed crosswise					Viewed endwise				
x = 2H y = 2H	17.8	19.2	18.3	19.7	20.1	17.9	19.2	18.3	19.7	20.1
3H	19.6	20.9	20.1	21.4	21.9	19.7	20.9	20.1	21.4	21.9
4H	20.5	21.7	21.0	22.2	22.7	20.5	21.7	21.0	22.2	22.7
6H	21.3	22.4	21.8	22.9	23.5	21.3	22.4	21.8	22.9	23.5
8H	21.7	22.8	22.2	23.3	23.8	21.7	22.8	22.2	23.3	23.9
12H	22.1	23.1	22.6	23.7	24.2	22.1	23.2	22.7	23.7	24.3
4H 2H	18.5	19.7	19.0	20.2	20.7	18.5	19.7	19.0	20.2	20.7
3H	20.5	21.5	21.0	22.1	22.6	20.5	21.6	21.0	22.1	22.7
4H	21.5	22.4	22.0	23.0	23.6	21.5	22.5	22.1	23.0	23.6
6H	22.4	23.3	23.0	23.9	24.5	22.5	23.3	23.0	23.9	24.5
8H	22.9	23.7	23.5	24.3	25.0	22.9	23.8	23.6	24.3	25.0
12H	23.4	24.2	24.1	24.8	25.5	23.5	24.2	24.1	24.8	25.5
8H 4H	21.8	22.6	22.4	23.2	23.9	21.9	22.7	22.5	23.2	23.9
6H	23.0	23.7	23.7	24.3	25.0	23.1	23.7	23.7	24.3	25.1
8H	23.7	24.3	24.3	24.9	25.6	23.7	24.3	24.4	24.9	25.7
12H	24.4	24.9	25.1	25.6	26.3	24.4	24.9	25.1	25.6	26.3
12H 4H	21.9	22.6	22.5	23.2	23.9	21.9	22.6	22.5	23.2	23.9
6H	23.2	23.8	23.8	24.4	25.1	23.2	23.8	23.8	24.4	25.2
8H	23.9	24.4	24.6	25.1	25.8	23.9	24.4	24.6	25.1	25.9
Variations with the observer position at spacings(CIE Pub.117):										
S = 1.0H	+ 0.1 / - 0.1					+ 0.1 / - 0.1				
1.5H	+ 0.2 / - 0.3					+ 0.2 / - 0.3				
2.0H	+ 0.2 / - 0.4					+ 0.2 / - 0.3				

CIE Pub.117, 2139 lm Total Lamp Luminous Flux Corrected (8log(F/F0) = 2.6)  
 Area: 0.113411 m2

C Range: 0 - 360DEG  
 C Interval: 22.5DEG  
 Test Speed: HIGH  
 Temperature:25.3℃  
 Operators:linye  
 Test Date:2026-03-05

γ Range: 0 - 180DEG  
 γ Interval: 0.5DEG  
 Test System:EVERFINE GO-R5000\_V2 SYSTEM V2.00.459  
 Humidity:58.9%  
 Test Distance:26.000m [K=1.0000]  
 Remarks:

**UTILIZATION FACTORS TABLE**

Test:U:119.91V I:0.2181A P:24.189W PF:0.9248 Freq:60.00Hz Lamp Flux:2138.99x1 lm		
NAME: 15寸北美吸顶灯	TYPE: 吸顶灯	WEIGHT: 1
SPEC.: /	DIM.: d=0.38	SERIAL No.: SY2500238-3#2700K
MFR.: 研发中心	SUR.: d=0.38	Shielding Angle: /

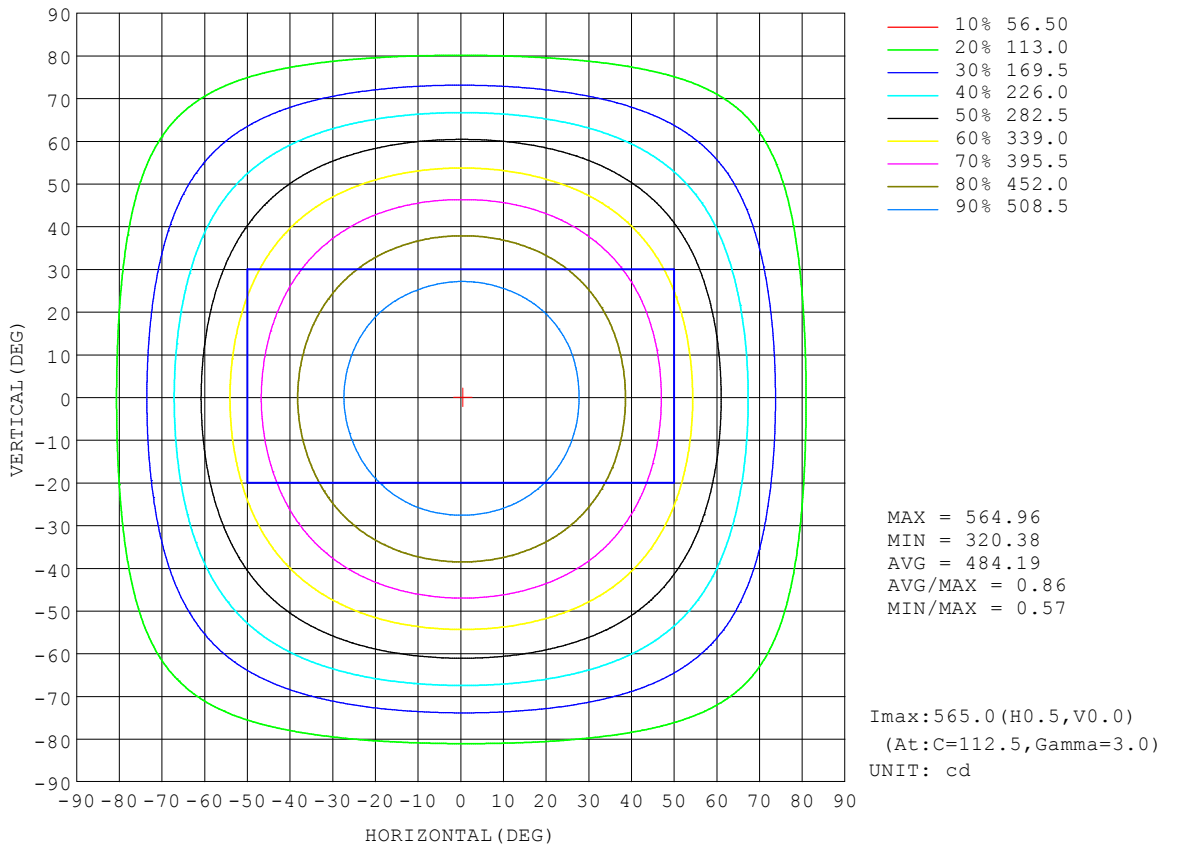
REFLECTANCE										
Ceiling	0.8	0.8	0.8	0.7	0.7	0.7	0.5	0.5	0.5	0
Walls	0.7	0.5	0.3	0.7	0.5	0.3	0.7	0.5	0.3	0
Working plane	0.2	0.2	0.2	0.2	0.2	0.2	0.2	0.2	0.2	0
ROOM INDEX	UTILIZATION FACTORS (PERCENT) $k(RI) \times RCR = 5$									
k = 0.60	51	39	32	50	39	32	49	38	32	25
0.80	61	49	41	60	48	41	57	47	40	32
1.00	69	57	49	67	56	49	64	57	48	39
1.25	76	65	57	74	63	56	70	61	54	45
1.50	81	70	62	79	69	61	74	66	59	50
2.00	88	79	71	86	77	70	80	73	67	57
2.50	93	84	77	90	81	75	84	77	72	60
3.00	96	88	82	93	86	80	87	81	76	64
4.00	101	94	88	97	91	86	91	86	82	69
5.00	103	97	92	100	94	90	93	89	85	72
ROOM INDEX	UF(total)									Direct
According to DIN EN 13032-2 2004			Suspended				SHRNOM = 1.25			

C Range: 0 - 360DEG  
 C Interval: 22.5DEG  
 Test Speed: HIGH  
 Temperature:25.3°C  
 Operators:linye  
 Test Date:2026-03-05

γ Range: 0 - 180DEG  
 γ Interval: 0.5DEG  
 Test System:EVERFINE GO-R5000\_V2 SYSTEM V2.00.459  
 Humidity:58.9%  
 Test Distance:26.000m [K=1.0000]  
 Remarks:

**ISOCANDELA DIAGRAM**

Test:U:119.91V I:0.2181A P:24.189W PF:0.9248 Freq:60.00Hz Lamp Flux:2138.99x1 lm		
NAME: 15寸北美吸顶灯	TYPE: 吸顶灯	WEIGHT: 1
SPEC.: /	DIM.: d=0.38	SERIAL No.: SY2500238-3#2700K
MFR.: 研发中心	SUR.: d=0.38	Shielding Angle: /

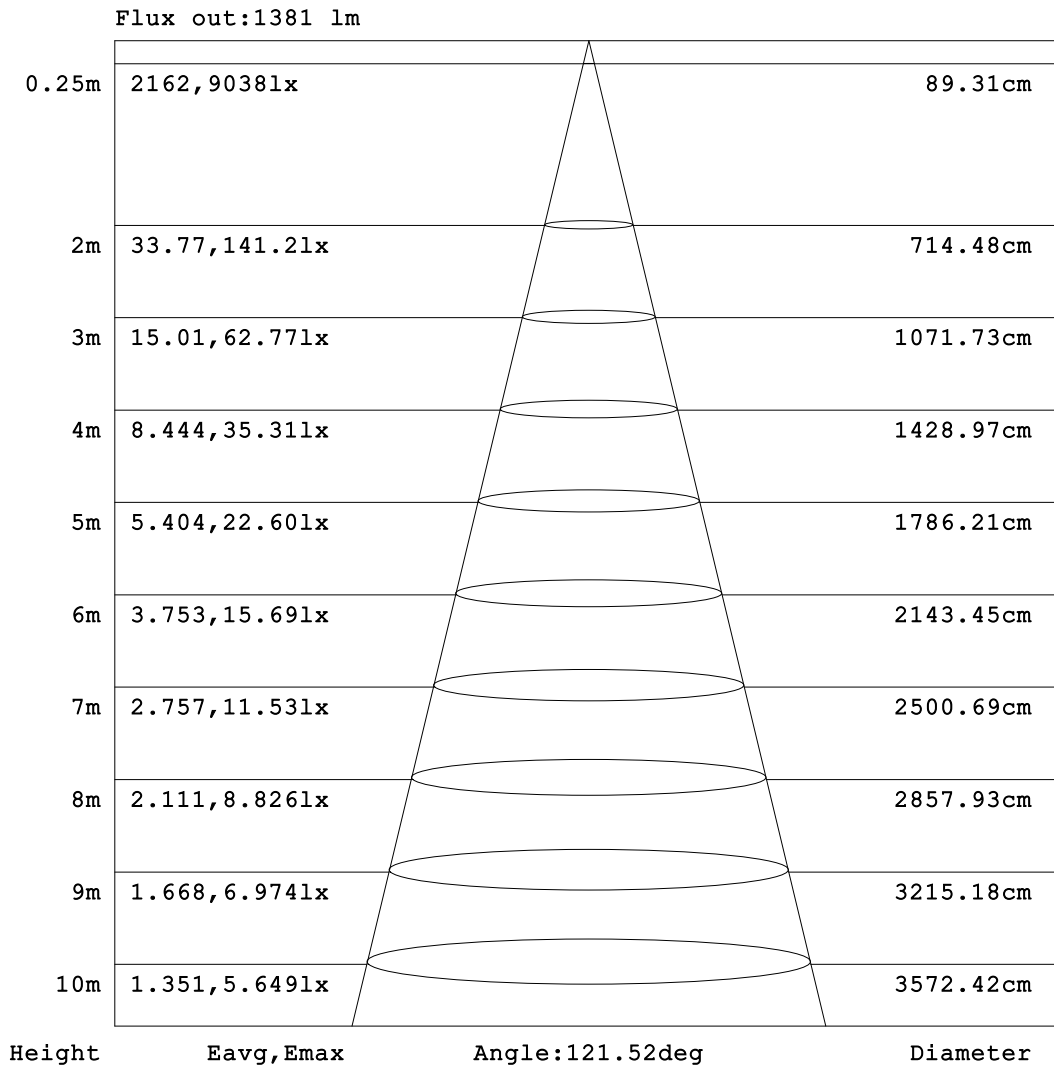


C Range: 0 - 360DEG  
 C Interval: 22.5DEG  
 Test Speed: HIGH  
 Temperature:25.3°C  
 Operators:linye  
 Test Date:2026-03-05

γ Range: 0 - 180DEG  
 γ Interval: 0.5DEG  
 Test System:EVERFINE GO-R5000\_V2 SYSTEM V2.00.459  
 Humidity:58.9%  
 Test Distance:26.000m [K=1.0000]  
 Remarks:

**AAI Figure**

Test:U:119.91V I:0.2181A P:24.189W PF:0.9248 Freq:60.00Hz Lamp Flux:2138.99x1 lm		
NAME: 15寸北美吸顶灯	TYPE: 吸顶灯	WEIGHT: 1
SPEC.: /	DIM.: d=0.38	SERIAL No.: SY2500238-3#2700K
MFR.: 研发中心	SUR.: d=0.38	Shielding Angle: /



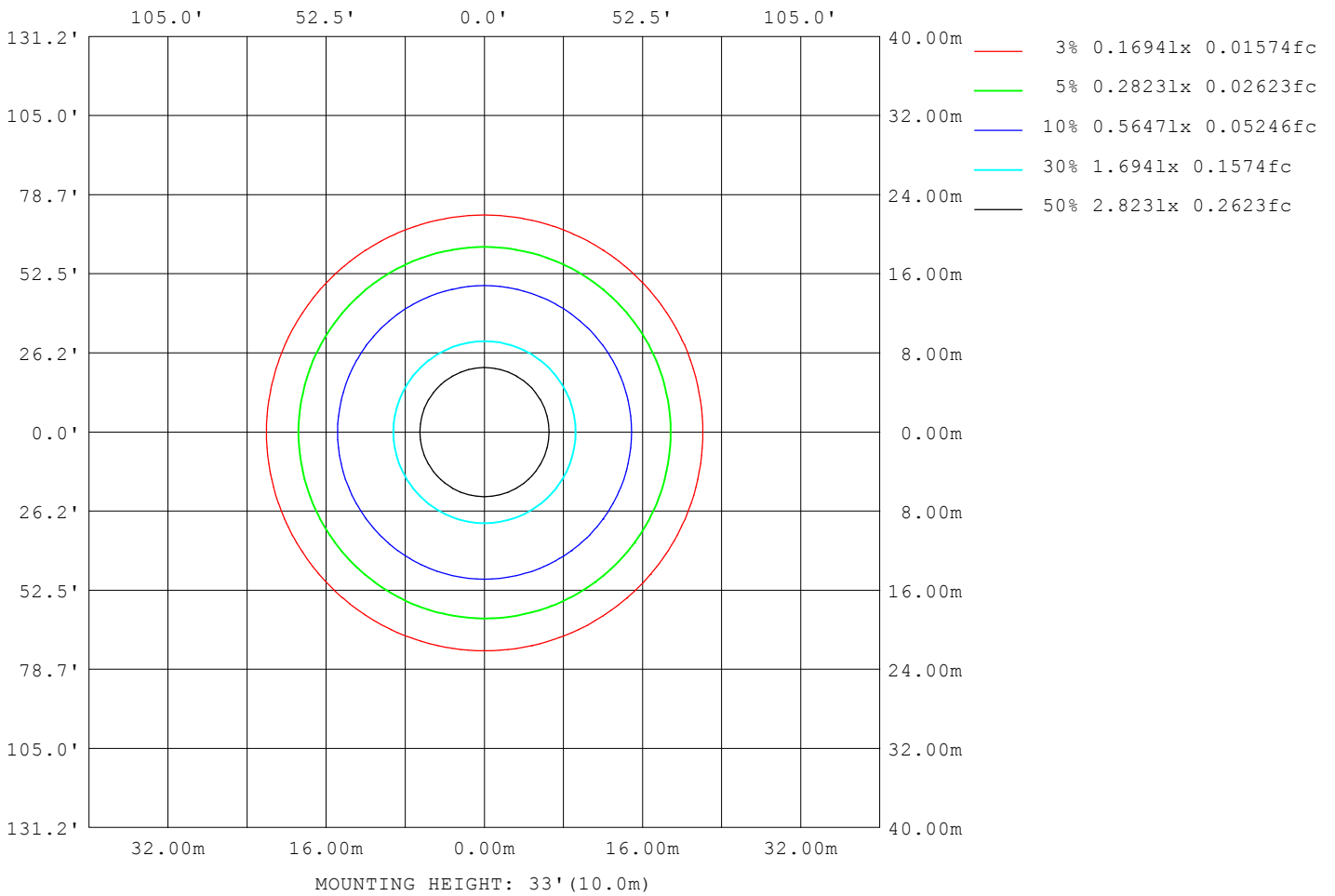
Note:The Curves indicate the illuminated area and the average illumination when the luminaire is at different distance.

C Range: 0 - 360DEG  
C Interval: 22.5DEG  
Test Speed: HIGH  
Temperature:25.3°C  
Operators:linye  
Test Date:2026-03-05

γ Range: 0 - 180DEG  
γ Interval: 0.5DEG  
Test System:EVERFINE GO-R5000\_V2 SYSTEM V2.00.459  
Humidity:58.9%  
Test Distance:26.000m [K=1.0000]  
Remarks:

**ISOLUX DIAGRAM**

Test:U:119.91V I:0.2181A P:24.189W PF:0.9248 Freq:60.00Hz Lamp Flux:2138.99x1 lm		
NAME: 15寸北美吸顶灯	TYPE: 吸顶灯	WEIGHT: 1
SPEC.: /	DIM.: d=0.38	SERIAL No.: SY2500238-3#2700K
MFR.: 研发中心	SUR.: d=0.38	Shielding Angle: /



C Range: 0 - 360DEG  
 C Interval: 22.5DEG  
 Test Speed: HIGH  
 Temperature:25.3°C  
 Operators:linye  
 Test Date:2026-03-05

γ Range: 0 - 180DEG  
 γ Interval: 0.5DEG  
 Test System:EVERFINE GO-R5000\_V2 SYSTEM V2.00.459  
 Humidity:58.9%  
 Test Distance:26.000m [K=1.0000]  
 Remarks:

**LED Avg.L Report**

Test:U:119.91V I:0.2181A P:24.189W PF:0.9248 Freq:60.00Hz Lamp Flux:2138.99x1 lm		
NAME: 15寸北美吸顶灯	TYPE: 吸顶灯	WEIGHT: 1
SPEC.: /	DIM.: d=0.38	SERIAL No.: SY2500238-3#2700K
MFR.: 研发中心	SUR.: d=0.38	Shielding Angle: /

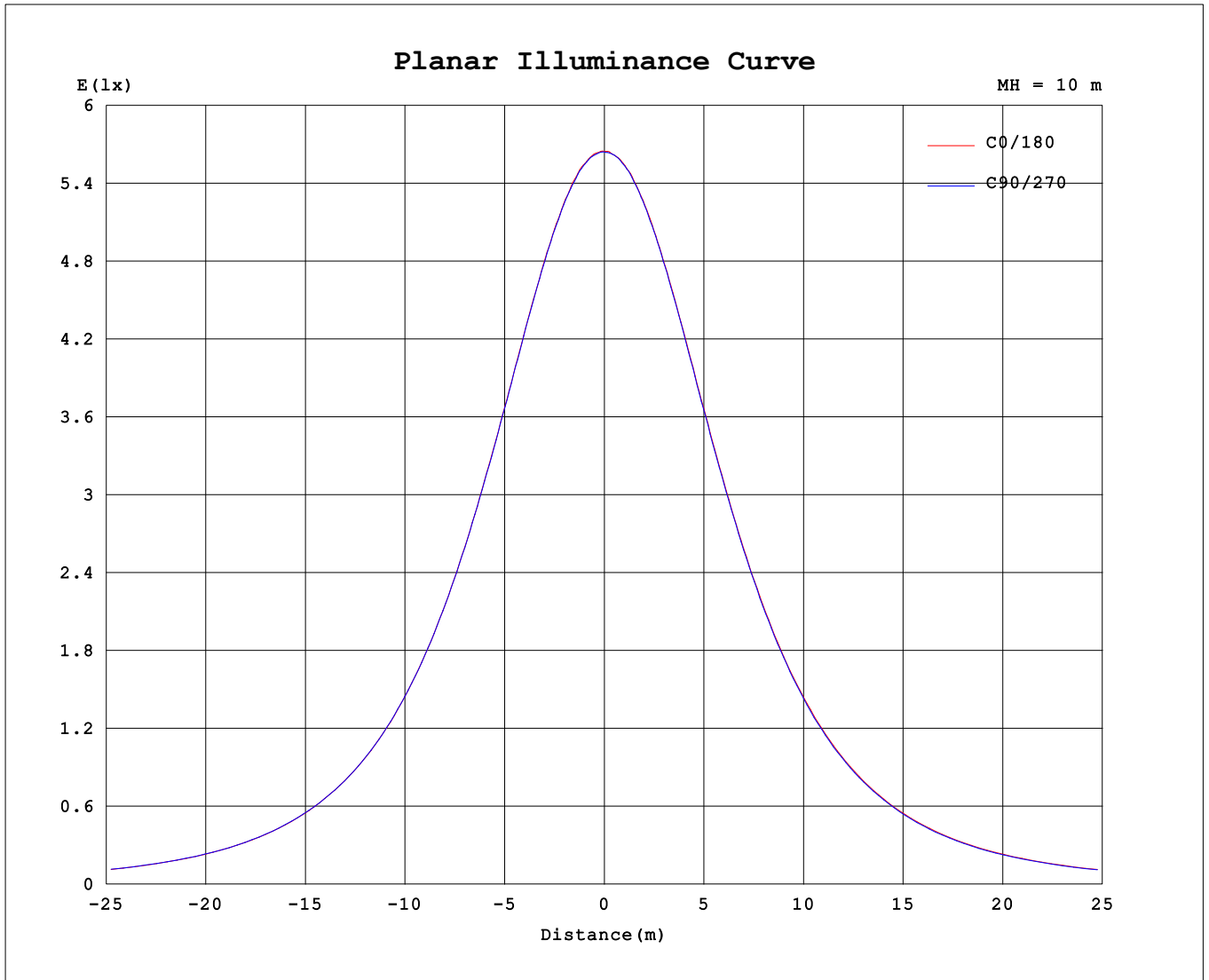
AvgL	cd/m2
L_0~180 (65) av	5134
L_0~180 (75) av	5381
L_0~180 (85) av	8682
L_90~270 (65) av	5108
L_90~270 (75) av	5334
L_90~270 (85) av	8569
L_45 (65) av	5118
L_45 (75) av	5352
L_45 (85) av	8606

Standard: GB/T 29293-2012

C Range: 0 - 360DEG  
 C Interval: 22.5DEG  
 Test Speed: HIGH  
 Temperature:25.3℃  
 Operators:linye  
 Test Date:2026-03-05

γ Range: 0 - 180DEG  
 γ Interval: 0.5DEG  
 Test System:EVERFINE GO-R5000\_V2 SYSTEM V2.00.459  
 Humidity:58.9%  
 Test Distance:26.000m [K=1.0000]  
 Remarks:

**Planar Illuminance Curve**



C Range: 0 - 360DEG  
 C Interval: 22.5DEG  
 Test Speed: HIGH  
 Temperature: 25.3°C  
 Operators: linye  
 Test Date: 2026-03-05

γ Range: 0 - 180DEG  
 γ Interval: 0.5DEG  
 Test System: EVERFINE GO-R5000\_V2 SYSTEM V2.00.459  
 Humidity: 58.9%  
 Test Distance: 26.000m [K=1.0000]  
 Remarks:

LUMINOUS DISTRIBUTION INTENSITY DATA

Test:U:119.91V I:0.2181A P:24.189W PF:0.9248 Freq:60.00Hz Lamp Flux:2138.99x1 lm		
NAME: 15寸北美吸顶灯	TYPE: 吸顶灯	WEIGHT: 1
SPEC.: /	DIM.: d=0.38	SERIAL No.: SY2500238-3#2700K
MFR.: 研发中心	SUR.: d=0.38	Shielding Angle: /

Table--1

UNIT: cd

C (DEG) \ γ (DEG)	0	22.5	45	67.5	90	112.5	135	157.5	180	202.5	225	247.5	270	292.5	315	337.5			
0	565	565	565	565	565	565	565	565	565	565	565	565	565	565	565	565			
5	563	563	563	564	563	564	563	563	563	563	563	562	563	564	563	563			
10	559	559	558	559	559	559	558	558	558	558	558	558	558	559	559	559			
15	550	550	550	550	550	550	549	549	549	549	548	549	549	550	550	550			
20	537	537	536	537	536	537	535	536	536	535	535	535	535	536	536	538			
25	519	520	520	519	519	519	517	518	518	518	516	517	517	518	519	520			
30	498	498	498	498	498	497	496	496	496	495	495	495	495	496	497	499			
35	473	473	473	473	472	472	471	470	471	469	468	469	469	470	471	473			
40	443	444	444	444	443	443	441	441	440	439	439	439	439	440	441	443			
45	410	411	411	410	410	409	408	407	408	406	406	405	406	407	408	410			
50	373	374	374	374	374	373	372	371	371	369	369	369	369	369	371	373			
55	333	335	335	335	334	334	332	331	331	330	329	329	329	329	331	333			
60	291	292	293	293	292	291	290	289	289	288	287	286	286	287	288	291			
65	247	248	249	249	248	248	246	245	245	243	243	242	241	242	244	246			
70	202	204	204	204	204	203	201	200	201	199	198	197	196	197	199	202			
75	159	160	161	161	160	159	158	157	157	156	154	153	153	153	155	158			
80	119	121	121	121	121	120	119	118	118	116	115	114	113	114	116	118			
85	87.0	88.2	88.4	88.4	88.1	87.4	86.4	85.5	84.6	83.4	82.4	81.8	81.3	81.6	83.0	85.3			
90	64.0	64.5	64.5	64.5	64.1	63.6	62.8	62.2	62.1	61.1	60.6	60.2	59.9	60.0	61.2	63.1			
95	52.5	52.9	52.6	52.3	52.1	51.7	51.3	50.9	50.3	49.8	49.5	49.1	48.7	48.8	49.7	51.5			
100	47.0	47.1	46.9	46.6	46.4	46.1	45.9	45.6	44.8	44.6	44.3	44.0	43.6	43.6	44.4	45.7			
105	44.9	45.1	44.8	44.6	44.4	44.2	44.1	44.0	43.5	43.0	42.7	42.4	42.0	42.1	42.8	43.6			
110	44.5	44.7	44.6	44.4	44.2	44.1	43.9	43.8	43.6	43.2	42.9	42.5	42.0	42.1	42.8	43.6			
115	44.4	44.7	44.6	44.4	44.3	44.1	44.1	44.1	44.0	43.3	42.9	42.6	42.0	42.1	42.8	43.6			
120	44.4	44.7	44.6	44.5	44.4	44.4	44.2	44.1	44.1	43.3	42.8	42.5	42.0	42.0	42.6	43.4			
125	44.4	44.6	44.6	44.5	44.6	44.8	44.3	44.2	44.0	43.3	42.6	42.3	41.9	42.0	42.6	43.3			
130	44.1	44.4	44.6	44.6	44.7	44.8	44.4	44.2	43.6	43.3	42.5	42.2	41.9	41.8	42.4	43.0			
135	43.8	44.1	44.3	44.6	44.7	44.8	44.4	44.2	43.4	42.9	42.5	42.2	41.9	41.8	42.3	42.6			
140	43.4	43.8	44.0	44.4	44.6	44.5	44.4	44.2	43.4	42.9	42.5	42.2	41.9	41.8	42.3	42.6			
145	43.3	43.6	43.8	44.2	44.4	44.3	44.2	44.2	43.4	42.9	42.5	42.3	42.2	42.2	42.6	42.6			
150	43.3	43.6	43.7	44.2	44.3	44.2	44.2	44.1	43.4	43.0	42.6	42.5	42.4	42.5	42.8	42.6			
155	43.4	43.5	43.7	44.1	44.1	44.2	44.2	44.1	43.3	42.8	42.6	42.5	42.3	42.5	42.8	42.5			
160	43.1	43.0	43.1	43.0	42.8	43.2	43.7	43.7	42.4	42.5	42.4	42.4	42.0	42.0	41.9	41.0			
165	36.8	37.4	37.5	37.8	38.4	39.0	39.1	39.2	37.5	37.3	36.9	37.2	37.3	37.1	36.6	36.8			
170	32.9	33.3	33.8	34.3	35.0	35.3	35.4	35.9	34.4	34.3	34.3	34.4	34.2	33.7	33.1	33.4			
175	36.5	37.7	38.5	38.3	38.1	38.0	37.2	37.1	37.6	37.1	35.7	33.6	31.9	31.2	31.2	32.5			
180	38.7	38.7	38.8	38.5	38.2	38.0	38.0	38.6	38.9	38.6	38.7	38.7	38.6	38.3	38.0	38.0			

C Range: 0 - 360DEG  
 C Interval: 22.5DEG  
 Test Speed: HIGH  
 Temperature:25.3℃  
 Operators:linye  
 Test Date:2026-03-05

γ Range: 0 - 180DEG  
 γ Interval: 0.5DEG  
 Test System:EVERFINE GO-R5000\_V2 SYSTEM V2.00.459  
 Humidity:58.9%  
 Test Distance:26.000m [K=1.0000]  
 Remarks: