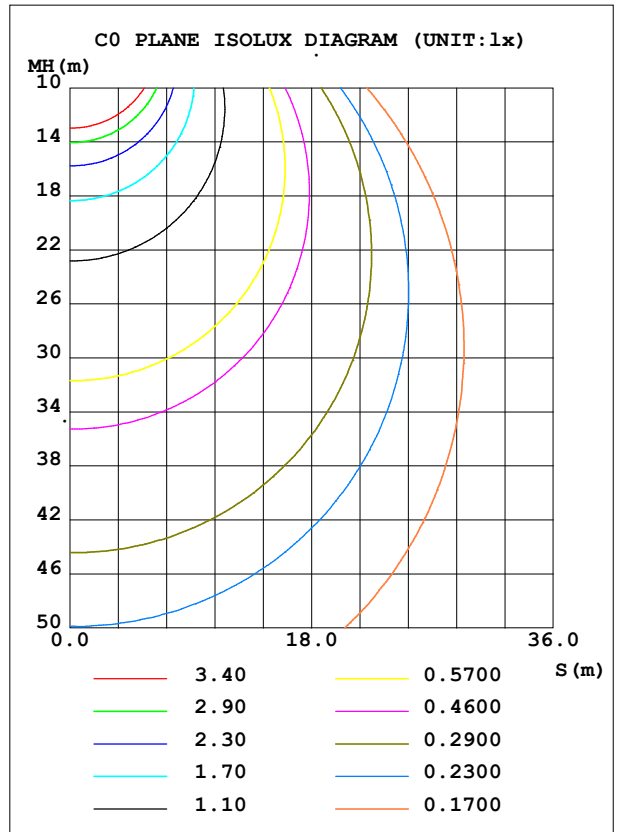
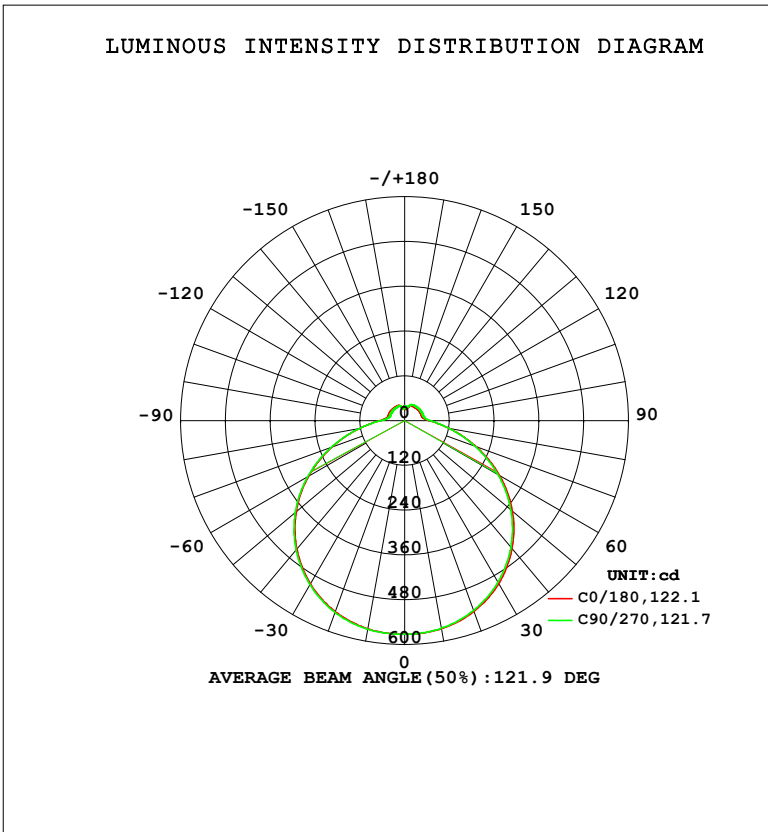


LUMINAIRE PHOTOMETRIC TEST REPORT

Test:U:119.92V I:0.2162A P:24.049W PF:0.9276 Freq:60.00Hz Lamp Flux:2190.75x1 lm		
NAME: 15寸北美吸顶灯	TYPE: 吸顶灯	WEIGHT: 1
SPEC.: /	DIM.: d=0.38	SERIAL No.: SY2500238-3#3000K
MFR.: 研发中心	SUR.: d=0.38	Shielding Angle: /

DATA OF LAMP		PHOTOMETRIC DATA				Eff: 91.10 lm/W
MODEL	3000K	I <sub>max</sub> (cd)	572.5	S/MH (C0/180)	1.31	
NOMINAL POWER (W)	/	LOR (%)	100.0	S/MH (C90/270)	1.32	
RATED VOLTAGE (V)	120	TOTAL FLUX (lm)	2190.7	η UP, DN (C0-180)	7.1, 42.8	
NOMINAL FLUX (lm)	2190.75	CIE CLASS	SEMI-D.	η UP, DN (C180-360)	6.5, 43.6	
LAMPS INSIDE	1	η up (%)	13.6	CIBSE SHR NOM	1.50	
TEST VOLTAGE (V)	/	η down (%)	86.4	CIBSE SHR MAX	1.50	



C Range: 0 - 360DEG  
 C Interval: 22.5DEG  
 Test Speed: HIGH  
 Temperature: 25.3°C  
 Operators: linye  
 Test Date: 2026-03-05

γ Range: 0 - 180DEG  
 γ Interval: 0.5DEG  
 Test System: EVERFINE GO-R5000\_V2 SYSTEM V2.00.459  
 Humidity: 58.9%  
 Test Distance: 26.000m [K=1.0000]  
 Remarks:

ZONAL FLUX DIAGRAM

ZONAL FLUX DIAGRAM:

γ	C0	C45	C90	C135	C180	C225	C270	C315	γ	Φ zone	Φ total	%lum, lamp
5	571.2	570.7	570.3	570.3	571.1	571.2	572.0	570.9	0- 5	13.67	13.67	0.62,0.62
10	566.3	565.3	565.0	564.5	566.2	567.0	567.9	567.3	5- 10	40.68	54.35	2.48,2.48
15	557.2	555.7	555.3	555.1	557.7	558.3	559.8	558.1	10- 15	66.64	121.0	5.52,5.52
20	543.7	541.7	540.9	541.1	544.8	545.3	546.9	545.2	15- 20	90.73	211.7	9.66,9.66
25	526.6	523.6	523.0	523.1	526.8	528.1	529.1	528.3	20- 25	112.2	323.9	14.8,14.8
30	504.3	501.4	500.4	500.7	505.3	506.5	507.6	506.4	25- 30	130.4	454.3	20.7,20.7
35	478.2	475.0	473.2	474.7	479.1	480.9	482.2	480.8	30- 35	144.6	598.9	27.3,27.3
40	448.0	444.4	443.4	444.4	449.3	452.0	453.1	451.6	35- 40	154.5	753.4	34.4,34.4
45	414.3	410.8	408.6	410.1	415.8	418.7	420.1	418.0	40- 45	159.7	913.1	41.7,41.7
50	377.0	373.4	371.3	373.0	379.1	382.1	383.3	380.8	45- 50	160.0	1073	49,49
55	336.4	332.9	331.1	332.6	339.5	342.4	343.0	340.5	50- 55	155.4	1228	56.1,56.1
60	293.9	290.2	288.5	289.7	297.3	300.4	300.5	297.9	55- 60	146.1	1375	62.7,62.7
65	249.1	245.5	244.4	245.9	252.2	255.7	255.2	252.6	60- 65	132.4	1507	68.8,68.8
70	203.7	201.4	200.7	202.0	207.3	210.0	209.2	207.2	65- 70	115.2	1622	74,74
75	160.3	159.0	158.8	159.2	163.7	165.8	165.0	162.6	70- 75	95.76	1718	78.4,78.4
80	121.1	120.6	120.9	121.0	124.0	124.9	123.9	122.0	75- 80	75.78	1794	81.9,81.9
85	88.66	89.53	90.09	89.60	89.95	90.44	89.22	87.80	80- 85	57.18	1851	84.5,84.5
90	65.97	67.90	68.96	67.43	66.49	65.87	64.76	64.22	85- 90	42.20	1893	86.4,86.4
95	55.09	57.43	58.50	56.84	54.18	52.81	51.32	51.64	90- 95	32.82	1926	87.9,87.9
100	49.68	52.08	53.20	51.46	48.31	46.30	44.80	45.68	95-100	27.97	1954	89.2,89.2
105	47.67	50.17	51.15	49.50	46.32	43.87	42.52	43.83	100-105	25.49	1979	90.3,90.3
110	47.33	49.74	50.76	49.21	46.33	44.01	42.61	43.83	105-110	24.43	2004	91.5,91.5
115	47.18	49.54	50.67	49.21	46.37	44.06	42.61	43.92	110-115	23.65	2027	92.5,92.5
120	47.09	49.26	50.38	49.02	46.32	44.06	42.61	43.92	115-120	22.68	2050	93.6,93.6
125	46.76	49.02	50.19	48.88	46.09	44.01	42.61	43.78	120-125	21.50	2072	94.6,94.6
130	46.33	48.40	49.81	48.50	45.61	43.82	42.61	43.54	125-130	20.12	2092	95.5,95.5
135	45.75	47.92	49.14	48.02	45.37	43.39	42.42	43.21	130-135	18.55	2110	96.3,96.3
140	45.28	47.40	48.67	47.59	44.89	43.20	42.33	42.83	135-140	16.83	2127	97.1,97.1
145	44.85	46.97	48.28	47.26	44.65	43.11	42.33	42.83	140-145	15.06	2142	97.8,97.8
150	44.84	46.92	48.14	47.16	44.65	43.20	42.47	43.02	145-150	13.26	2155	98.4,98.4
155	44.85	46.25	47.23	46.92	44.64	43.39	42.85	43.25	150-155	11.40	2167	98.9,98.9
160	44.28	45.35	45.52	45.68	43.40	43.20	42.85	42.73	155-160	9.364	2176	99.3,99.3
165	37.71	39.06	40.19	40.22	38.31	37.77	38.66	38.41	160-165	6.860	2183	99.6,99.6
170	33.75	34.83	36.06	35.98	34.73	34.95	35.89	34.92	165-170	4.424	2187	99.8,99.8
175	37.55	39.48	39.28	38.40	38.60	36.67	33.26	32.70	170-175	2.429	2190	100,100
180	39.65	39.63	39.47	39.40	40.22	39.72	39.61	39.16	175-180	0.9298	2191	100,100
DEG	LUMINOUS INTENSITY:cd								UNIT:lm			

Conical surface Flux(90deg): 913.1 lm

%lum = 41.7%  
 %lamp = 41.7%

Conical surface Flux(120deg): 1374.5 lm

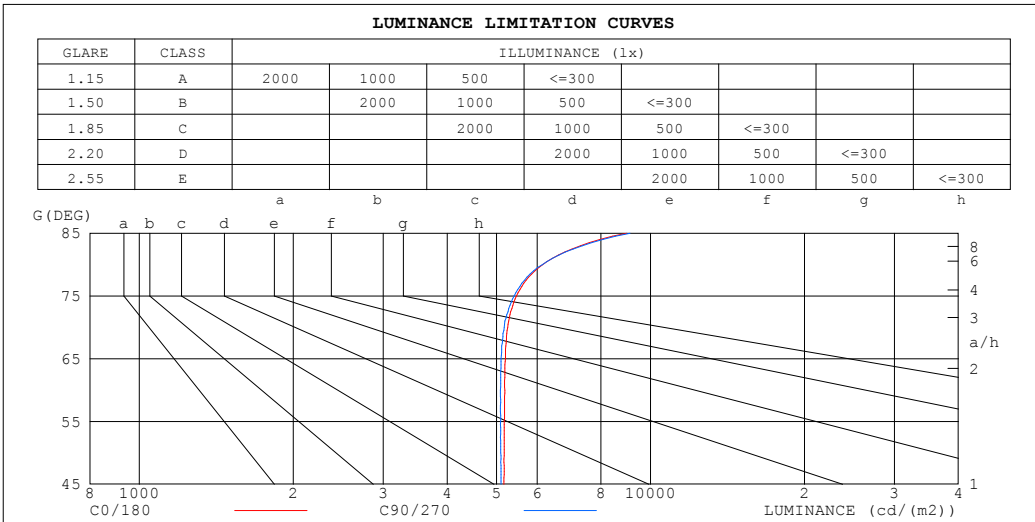
%lum = 62.7%  
 %lamp = 62.7%

C Range: 0 - 360DEG  
 C Interval: 22.5DEG  
 Test Speed: HIGH  
 Temperature:25.3°C  
 Operators:linye  
 Test Date:2026-03-05

γ Range: 0 - 180DEG  
 γ Interval: 0.5DEG  
 Test System:EVERFINE GO-R5000\_V2 SYSTEM V2.00.459  
 Humidity:58.9%  
 Test Distance:26.000m [K=1.0000]  
 Remarks:

**LUMINANCE LIMITATION CURVES**

Test:U:119.92V I:0.2162A P:24.049W PF:0.9276 Freq:60.00Hz Lamp Flux:2190.75x1 lm		
NAME: 15寸北美吸顶灯	TYPE: 吸顶灯	WEIGHT: 1
SPEC.: /	DIM.: d=0.38	SERIAL No.: SY2500238-3#3000K
MFR.: 研发中心	SUR.: d=0.38	Shielding Angle: /



LUMINANCE cd/(m2)		
G (DEG)	C0/180	C90/270
85	8975	9115
80	6153	6140
75	5463	5409
70	5254	5173
65	5200	5098
60	5186	5087
55	5173	5089
50	5174	5093
45	5169	5095

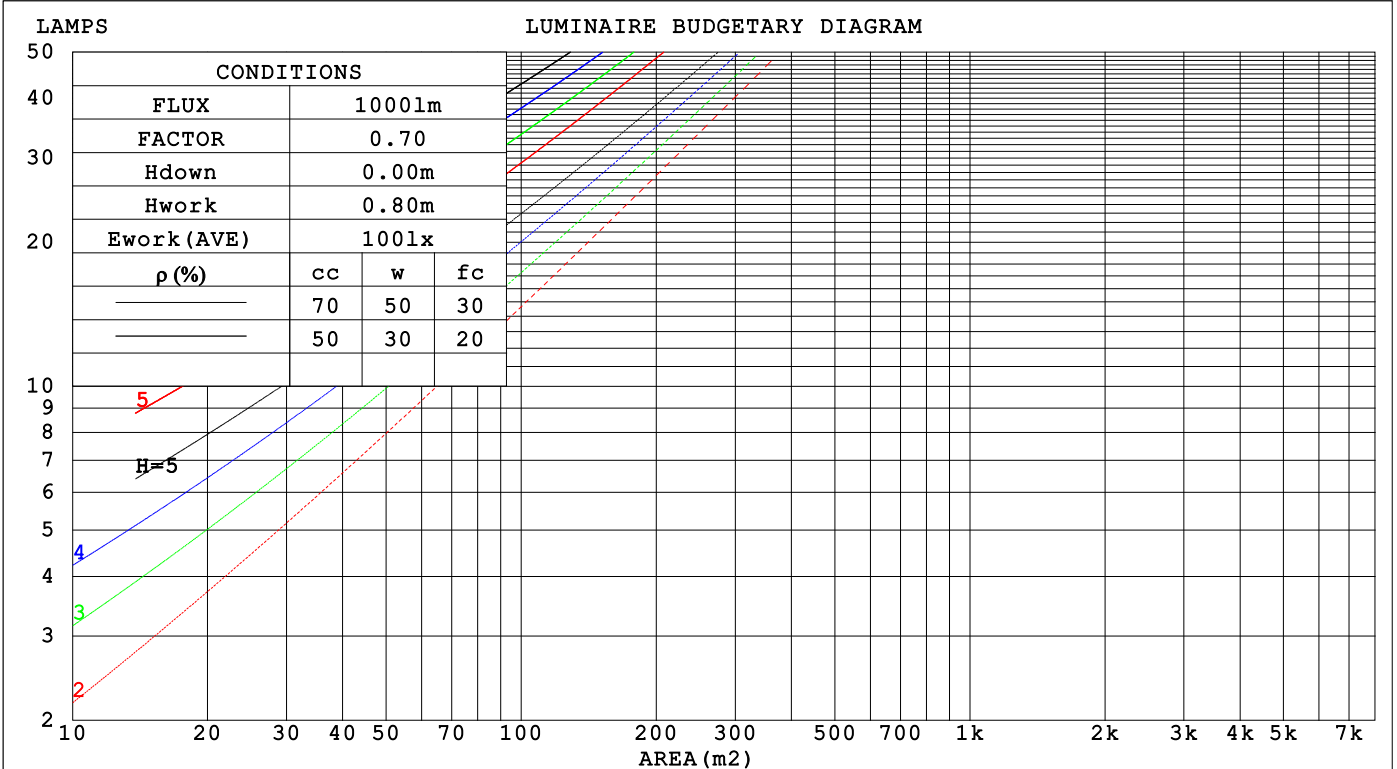
C Range: 0 - 360DEG  
 C Interval: 22.5DEG  
 Test Speed: HIGH  
 Temperature:25.3°C  
 Operators:linye  
 Test Date:2026-03-05

γ Range: 0 - 180DEG  
 γ Interval: 0.5DEG  
 Test System:EVERFINE GO-R5000\_V2 SYSTEM V2.00.459  
 Humidity:58.9%  
 Test Distance:26.000m [K=1.0000]  
 Remarks:

**CU AND LUMINAIRE BUDGETARY ESTIMATE DIAGRAM**

Test:U:119.92V I:0.2162A P:24.049W PF:0.9276 Freq:60.00Hz Lamp Flux:2190.75x1 lm		
NAME: 15寸北美吸顶灯	TYPE: 吸顶灯	WEIGHT: 1
SPEC.: /	DIM.: d=0.38	SERIAL No.: SY2500238-3#3000K
MFR.: 研发中心	SUR.: d=0.38	Shielding Angle: /

ρcc	80%			70%			50%			30%			10%			0
	ρw	50%	30%	10%	50%	30%	10%	50%	30%	10%	50%	30%	10%	50%	30%	
ρfc	20%			20%			20%			20%			20%			0
RCR	RCR:Room Cavity Ratio															
	Coefficients of Utilization(CU)															
0.0	1.16	1.16	1.16	1.12	1.12	1.12	1.04	1.04	1.04	.96	.96	.96	.90	.90	.90	.86
1.0	.99	.94	.90	.95	.91	.87	.88	.85	.82	.82	.79	.77	.76	.74	.72	.69
2.0	.85	.78	.72	.82	.76	.70	.76	.71	.66	.71	.67	.63	.66	.63	.59	.56
3.0	.74	.66	.59	.72	.64	.58	.67	.60	.55	.62	.57	.52	.58	.53	.50	.47
4.0	.66	.56	.50	.63	.55	.48	.59	.52	.46	.55	.49	.44	.51	.46	.42	.40
5.0	.58	.49	.42	.56	.48	.41	.53	.45	.40	.49	.43	.38	.46	.41	.36	.34
6.0	.52	.43	.37	.51	.42	.36	.47	.40	.35	.44	.38	.33	.42	.36	.32	.29
7.0	.47	.38	.32	.46	.37	.32	.43	.36	.30	.40	.34	.29	.38	.32	.28	.26
8.0	.43	.34	.28	.42	.34	.28	.39	.32	.27	.37	.31	.26	.35	.29	.25	.23
9.0	.39	.31	.25	.38	.30	.25	.36	.29	.24	.34	.28	.23	.32	.27	.23	.21
10.0	.36	.28	.23	.35	.28	.23	.33	.27	.22	.31	.25	.21	.30	.24	.20	.19



C Range: 0 - 360DEG  
 C Interval: 22.5DEG  
 Test Speed: HIGH  
 Temperature:25.3°C  
 Operators:linye  
 Test Date:2026-03-05

γ Range: 0 - 180DEG  
 γ Interval: 0.5DEG  
 Test System:EVERFINE GO-R5000\_V2 SYSTEM V2.00.459  
 Humidity:58.9%  
 Test Distance:26.000m [K=1.0000]  
 Remarks:

WEC AND CCEC

Test:U:119.92V I:0.2162A P:24.049W PF:0.9276 Freq:60.00Hz Lamp Flux:2190.75x1 lm		
NAME: 15寸北美吸顶灯	TYPE: 吸顶灯	WEIGHT: 1
SPEC.: /	DIM.: d=0.38	SERIAL No.: SY2500238-3#3000K
MFR.: 研发中心	SUR.: d=0.38	Shielding Angle: /

ρ <sub>CC</sub>	80%			70%			50%			30%			10%			0
ρ <sub>w</sub>	50%	30%	10%	50%	30%	10%	50%	30%	10%	50%	30%	10%	50%	30%	10%	0
ρ <sub>fc</sub>	20%			20%			20%			20%			20%			0
RCR	RCR:Room Cavity Ratio						Wall Exitance Coefficients(WEC)									
0.0																
1.0	.344	.196	.062	.333	.190	.060	.312	.179	.057	.293	.169	.054	.275	.159	.051	
2.0	.310	.170	.052	.300	.165	.051	.281	.156	.048	.263	.148	.046	.247	.140	.044	
3.0	.281	.149	.045	.272	.145	.044	.255	.138	.042	.239	.131	.040	.224	.124	.038	
4.0	.256	.133	.039	.248	.130	.038	.232	.123	.037	.218	.117	.035	.204	.111	.034	
5.0	.235	.120	.035	.227	.117	.034	.213	.111	.033	.200	.106	.031	.188	.100	.030	
6.0	.216	.108	.031	.210	.106	.030	.197	.101	.029	.185	.096	.028	.174	.091	.027	
7.0	.200	.099	.028	.194	.097	.028	.183	.092	.027	.172	.088	.026	.162	.084	.025	
8.0	.187	.091	.026	.181	.089	.025	.170	.085	.024	.160	.081	.023	.151	.077	.023	
9.0	.174	.084	.024	.169	.082	.023	.159	.079	.022	.150	.075	.022	.142	.072	.021	
10.0	.164	.078	.022	.159	.077	.021	.150	.073	.021	.141	.070	.020	.133	.067	.019	

ρ <sub>CC</sub>	80%			70%			50%			30%			10%			0
ρ <sub>w</sub>	50%	30%	10%	50%	30%	10%	50%	30%	10%	50%	30%	10%	50%	30%	10%	0
ρ <sub>fc</sub>	20%			20%			20%			20%			20%			0
RCR	RCR:Room Cavity Ratio						Ceiling Cavity Exitance Coefficients(CCEC)									
0.0																
1.0	.294	.294	.294	.251	.251	.251	.172	.172	.172	.099	.099	.099	.032	.032	.032	
2.0	.287	.260	.236	.246	.223	.203	.168	.154	.140	.097	.089	.082	.031	.029	.026	
3.0	.280	.237	.201	.240	.204	.174	.164	.141	.121	.095	.082	.071	.030	.027	.023	
4.0	.272	.220	.178	.233	.190	.155	.160	.132	.109	.093	.077	.064	.030	.025	.021	
5.0	.265	.207	.163	.227	.179	.142	.156	.125	.100	.090	.073	.059	.029	.024	.019	
6.0	.257	.197	.153	.221	.171	.133	.152	.119	.094	.088	.070	.056	.028	.023	.018	
7.0	.250	.189	.146	.215	.164	.127	.148	.115	.090	.086	.067	.053	.028	.022	.018	
8.0	.243	.183	.140	.209	.158	.122	.144	.111	.086	.084	.065	.051	.027	.021	.017	
9.0	.237	.177	.136	.204	.153	.118	.141	.108	.084	.082	.064	.050	.027	.021	.017	
10.0	.231	.172	.133	.199	.149	.116	.138	.105	.082	.080	.062	.049	.026	.020	.016	
10.0	.225	.168	.130	.194	.146	.114	.134	.103	.081	.078	.061	.048	.025	.020	.016	

C Range: 0 - 360DEG  
 C Interval: 22.5DEG  
 Test Speed: HIGH  
 Temperature:25.3℃  
 Operators:linye  
 Test Date:2026-03-05

γ Range: 0 - 180DEG  
 γ Interval: 0.5DEG  
 Test System:EVERFINE GO-R5000\_V2 SYSTEM V2.00.459  
 Humidity:58.9%  
 Test Distance:26.000m [K=1.0000]  
 Remarks:

**UGR(Unified Glare Rating) Table**

Test:U:119.92V I:0.2162A P:24.049W PF:0.9276 Freq:60.00Hz										
Lamp Flux:2190.75x1 lm										
NAME: 15寸北美吸顶灯				TYPE: 吸顶灯				WEIGHT: 1		
SPEC.: /				DIM.: d=0.38				SERIAL No.: SY2500238-3#3000K		
MFR.: 研发中心				SUR.: d=0.38				Shielding Angle: /		
ceiling/cavity	0.7	0.7	0.5	0.5	0.3	0.7	0.7	0.5	0.5	0.3
walls	0.5	0.3	0.5	0.3	0.3	0.5	0.3	0.5	0.3	0.3
working plane	0.2	0.2	0.2	0.2	0.2	0.2	0.2	0.2	0.2	0.2
Room dimensions	Viewed crosswise					Viewed endwise				
x = 2H y = 2H	17.8	19.1	18.2	19.6	20.1	17.7	19.1	18.1	19.5	20.0
3H	19.6	20.8	20.0	21.3	21.8	19.5	20.7	20.0	21.2	21.7
4H	20.4	21.6	20.9	22.1	22.6	20.3	21.5	20.8	22.0	22.5
6H	21.2	22.3	21.7	22.8	23.4	21.1	22.3	21.7	22.8	23.3
8H	21.6	22.7	22.1	23.2	23.8	21.5	22.6	22.1	23.2	23.7
12H	22.0	23.1	22.6	23.6	24.2	22.0	23.1	22.5	23.6	24.2
4H 2H	18.4	19.6	18.9	20.1	20.6	18.3	19.5	18.8	20.0	20.6
3H	20.4	21.4	20.9	22.0	22.5	20.3	21.4	20.9	21.9	22.5
4H	21.4	22.3	21.9	22.9	23.5	21.3	22.3	21.9	22.8	23.4
6H	22.3	23.2	22.9	23.8	24.4	22.3	23.1	22.9	23.7	24.4
8H	22.8	23.6	23.4	24.2	24.9	22.8	23.6	23.4	24.2	24.9
12H	23.4	24.1	24.0	24.7	25.4	23.4	24.1	24.0	24.7	25.4
8H 4H	21.7	22.5	22.3	23.1	23.8	21.7	22.5	22.3	23.1	23.7
6H	22.9	23.6	23.6	24.2	24.9	22.9	23.6	23.5	24.2	24.9
8H	23.6	24.2	24.2	24.8	25.6	23.6	24.1	24.2	24.8	25.5
12H	24.3	24.8	25.0	25.5	26.3	24.3	24.8	25.0	25.5	26.2
12H 4H	21.8	22.5	22.4	23.1	23.8	21.7	22.5	22.3	23.1	23.8
6H	23.1	23.7	23.7	24.3	25.0	23.0	23.6	23.7	24.3	25.0
8H	23.8	24.3	24.5	25.0	25.7	23.8	24.3	24.5	25.0	25.7
Variations with the observer position at spacings(CIE Pub.117):										
S = 1.0H	+ 0.1 / - 0.1					+ 0.1 / - 0.1				
1.5H	+ 0.2 / - 0.3					+ 0.2 / - 0.3				
2.0H	+ 0.1 / - 0.3					+ 0.1 / - 0.3				

CIE Pub.117, 2191 lm Total Lamp Luminous Flux Corrected (8log(F/F0) = 2.7)  
 Area: 0.113411 m2

C Range: 0 - 360DEG  
 C Interval: 22.5DEG  
 Test Speed: HIGH  
 Temperature:25.3℃  
 Operators:linye  
 Test Date:2026-03-05

γ Range: 0 - 180DEG  
 γ Interval: 0.5DEG  
 Test System:EVERFINE GO-R5000\_V2 SYSTEM V2.00.459  
 Humidity:58.9%  
 Test Distance:26.000m [K=1.0000]  
 Remarks:

**UTILIZATION FACTORS TABLE**

Test:U:119.92V I:0.2162A P:24.049W PF:0.9276 Freq:60.00Hz Lamp Flux:2190.75x1 lm		
NAME: 15寸北美吸顶灯	TYPE: 吸顶灯	WEIGHT: 1
SPEC.: /	DIM.: d=0.38	SERIAL No.: SY2500238-3#3000K
MFR.: 研发中心	SUR.: d=0.38	Shielding Angle: /

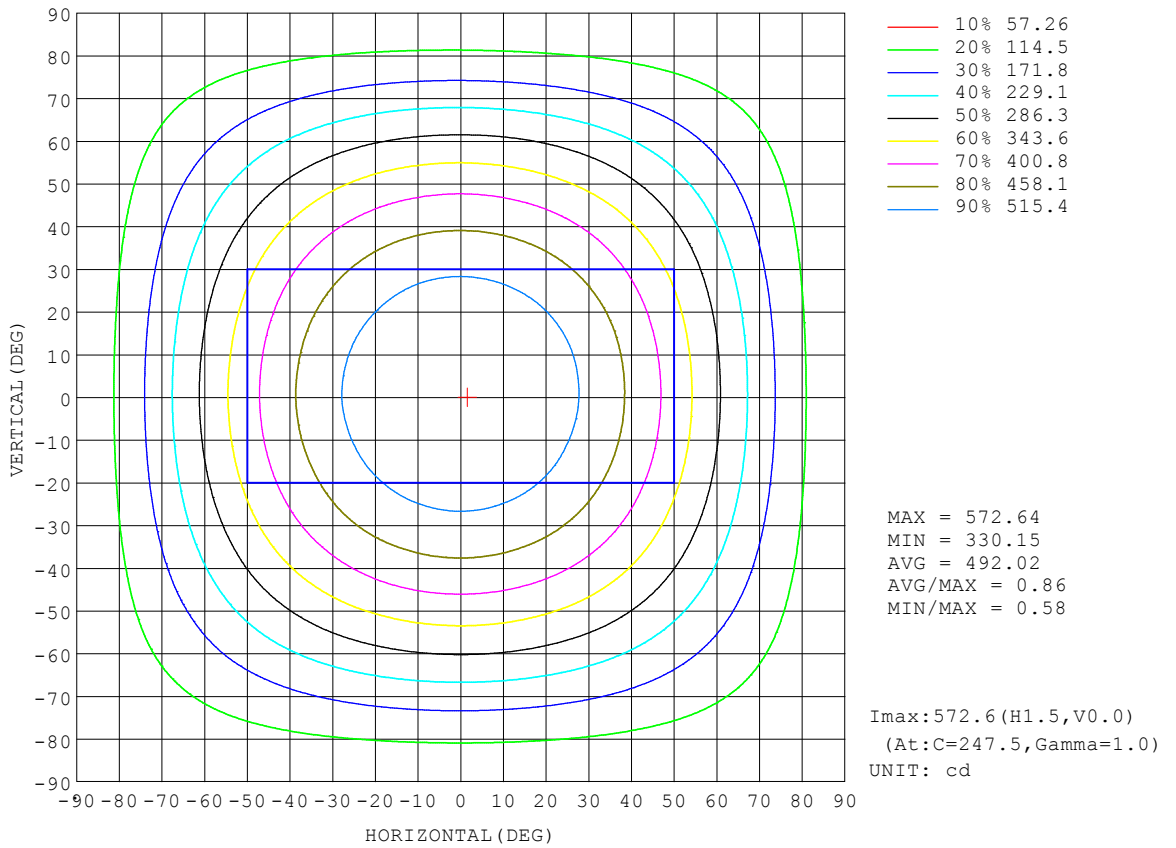
REFLECTANCE										
Ceiling	0.8	0.8	0.8	0.7	0.7	0.7	0.5	0.5	0.5	0
Walls	0.7	0.5	0.3	0.7	0.5	0.3	0.7	0.5	0.3	0
Working plane	0.2	0.2	0.2	0.2	0.2	0.2	0.2	0.2	0.2	0
ROOM INDEX	UTILIZATION FACTORS (PERCENT) k(RI) x RCR = 5									
k = 0.60	51	39	32	50	39	32	48	38	31	25
0.80	61	49	41	59	48	40	57	46	40	32
1.00	69	57	49	67	56	48	64	56	47	39
1.25	76	64	56	74	63	56	70	61	54	45
1.50	81	70	62	79	68	61	74	65	59	49
2.00	88	78	71	85	76	69	80	73	67	56
2.50	92	83	76	89	81	75	84	77	71	60
3.00	96	88	81	93	85	79	87	81	76	64
4.00	100	93	88	97	91	86	90	85	81	68
5.00	103	97	92	99	94	90	93	88	85	71
ROOM INDEX	UF(total)									Direct
According to DIN EN 13032-2 2004			Suspended				SHRNOM = 1.25			

C Range: 0 - 360DEG  
 C Interval: 22.5DEG  
 Test Speed: HIGH  
 Temperature:25.3°C  
 Operators:linye  
 Test Date:2026-03-05

γ Range: 0 - 180DEG  
 γ Interval: 0.5DEG  
 Test System:EVERFINE GO-R5000\_V2 SYSTEM V2.00.459  
 Humidity:58.9%  
 Test Distance:26.000m [K=1.0000]  
 Remarks:

**ISOCANDELA DIAGRAM**

Test:U:119.92V I:0.2162A P:24.049W PF:0.9276 Freq:60.00Hz Lamp Flux:2190.75x1 lm		
NAME: 15寸北美吸顶灯	TYPE: 吸顶灯	WEIGHT: 1
SPEC.: /	DIM.: d=0.38	SERIAL No.: SY2500238-3#3000K
MFR.: 研发中心	SUR.: d=0.38	Shielding Angle: /

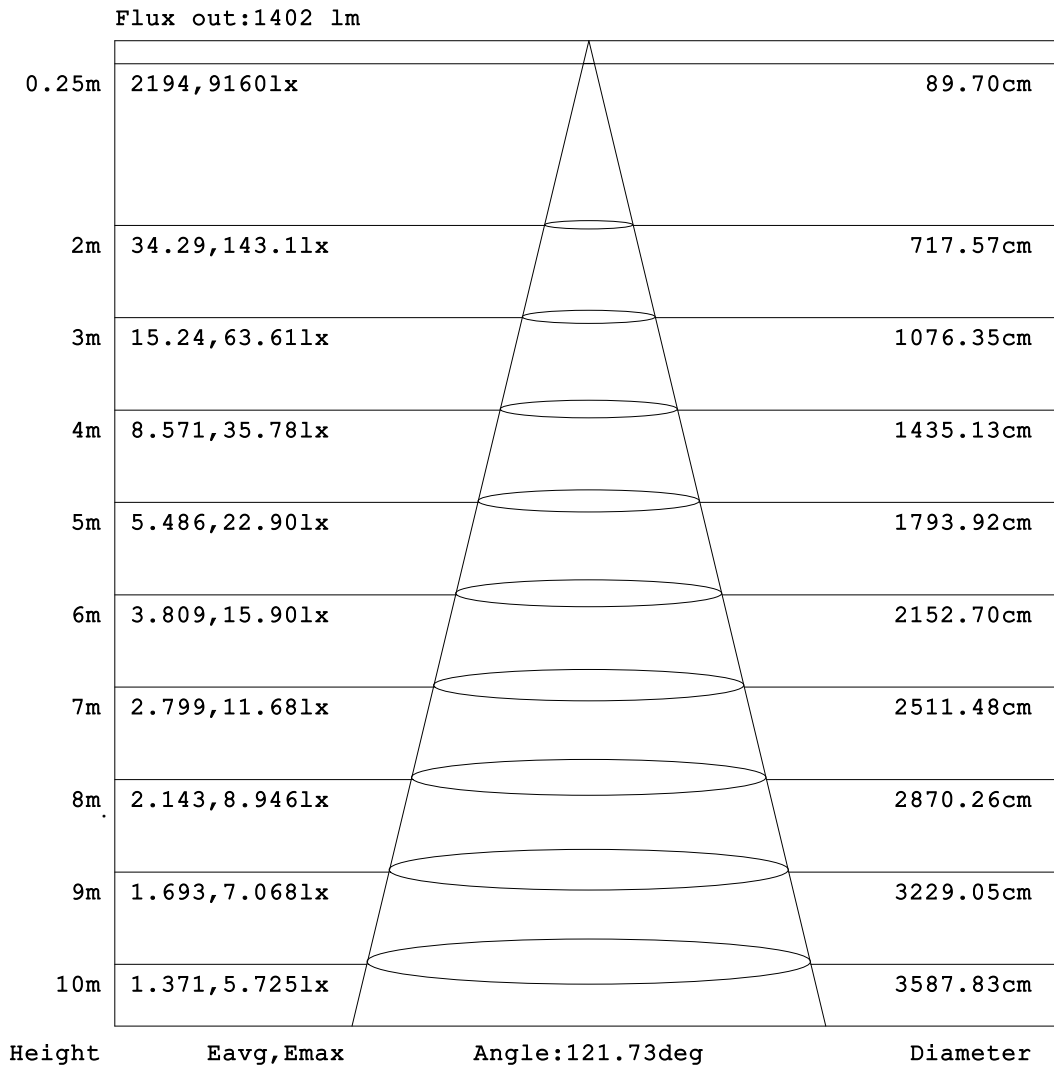


C Range: 0 - 360DEG  
C Interval: 22.5DEG  
Test Speed: HIGH  
Temperature:25.3°C  
Operators:linye  
Test Date:2026-03-05

γ Range: 0 - 180DEG  
γ Interval: 0.5DEG  
Test System:EVERFINE GO-R5000\_V2 SYSTEM V2.00.459  
Humidity:58.9%  
Test Distance:26.000m [K=1.0000]  
Remarks:

**AAI Figure**

Test:U:119.92V I:0.2162A P:24.049W PF:0.9276 Freq:60.00Hz Lamp Flux:2190.75x1 lm		
NAME: 15寸北美吸顶灯	TYPE: 吸顶灯	WEIGHT: 1
SPEC.: /	DIM.: d=0.38	SERIAL No.: SY2500238-3#3000K
MFR.: 研发中心	SUR.: d=0.38	Shielding Angle: /



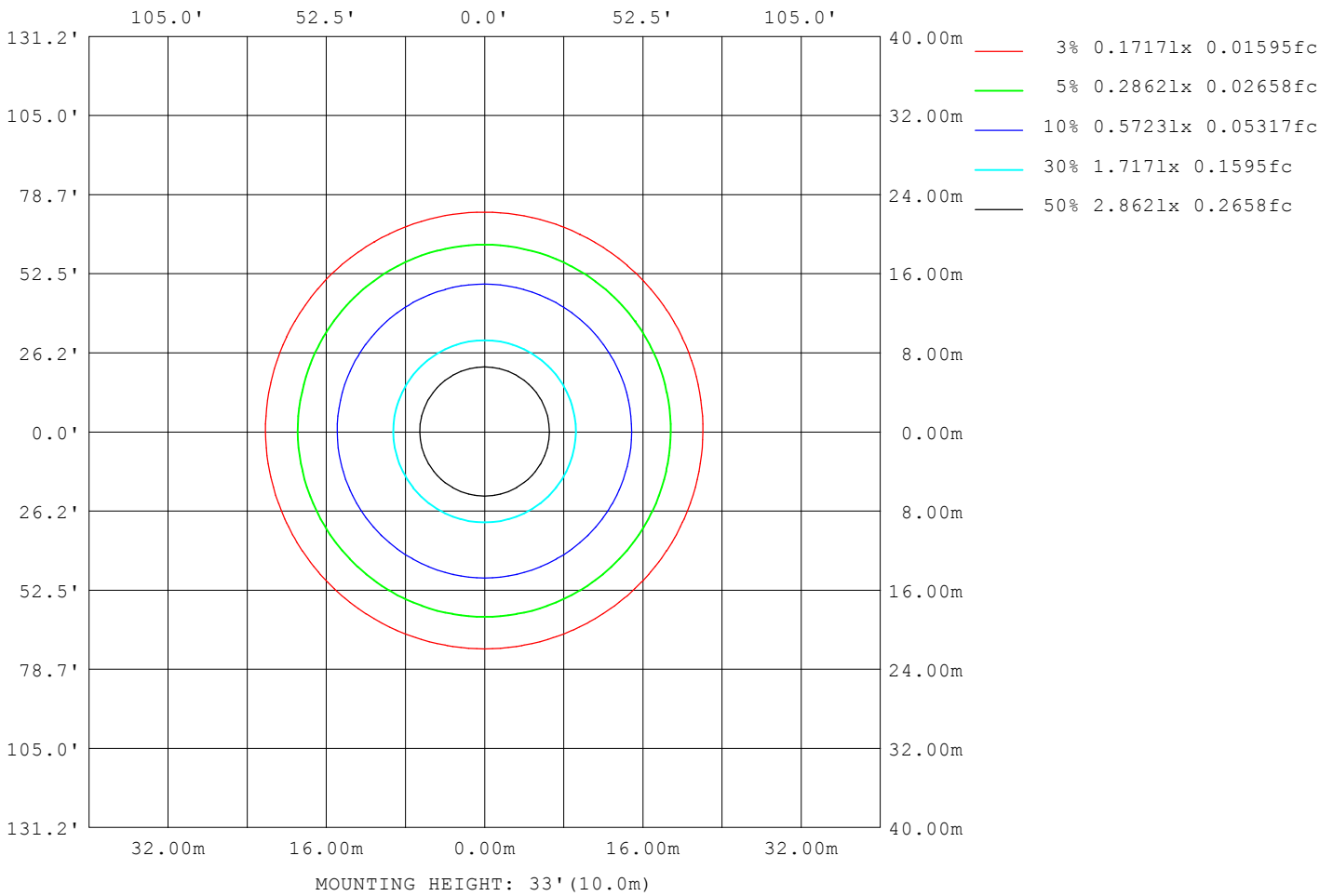
Note: The Curves indicate the illuminated area and the average illumination when the luminaire is at different distance.

C Range: 0 - 360DEG  
C Interval: 22.5DEG  
Test Speed: HIGH  
Temperature: 25.3°C  
Operators: linye  
Test Date: 2026-03-05

γ Range: 0 - 180DEG  
γ Interval: 0.5DEG  
Test System: EVERFINE GO-R5000\_V2 SYSTEM V2.00.459  
Humidity: 58.9%  
Test Distance: 26.000m [K=1.0000]  
Remarks:

**ISOLUX DIAGRAM**

Test:U:119.92V I:0.2162A P:24.049W PF:0.9276 Freq:60.00Hz Lamp Flux:2190.75x1 lm		
NAME: 15寸北美吸顶灯	TYPE: 吸顶灯	WEIGHT: 1
SPEC.: /	DIM.: d=0.38	SERIAL No.: SY2500238-3#3000K
MFR.: 研发中心	SUR.: d=0.38	Shielding Angle: /



C Range: 0 - 360DEG  
 C Interval: 22.5DEG  
 Test Speed: HIGH  
 Temperature:25.3°C  
 Operators:linye  
 Test Date:2026-03-05

γ Range: 0 - 180DEG  
 γ Interval: 0.5DEG  
 Test System:EVERFINE GO-R5000\_V2 SYSTEM V2.00.459  
 Humidity:58.9%  
 Test Distance:26.000m [K=1.0000]  
 Remarks:

**LED Avg.L Report**

Test:U:119.92V I:0.2162A P:24.049W PF:0.9276 Freq:60.00Hz Lamp Flux:2190.75x1 lm		
NAME: 15寸北美吸顶灯	TYPE: 吸顶灯	WEIGHT: 1
SPEC.: /	DIM.: d=0.38	SERIAL No.: SY2500238-3#3000K
MFR.: 研发中心	SUR.: d=0.38	Shielding Angle: /

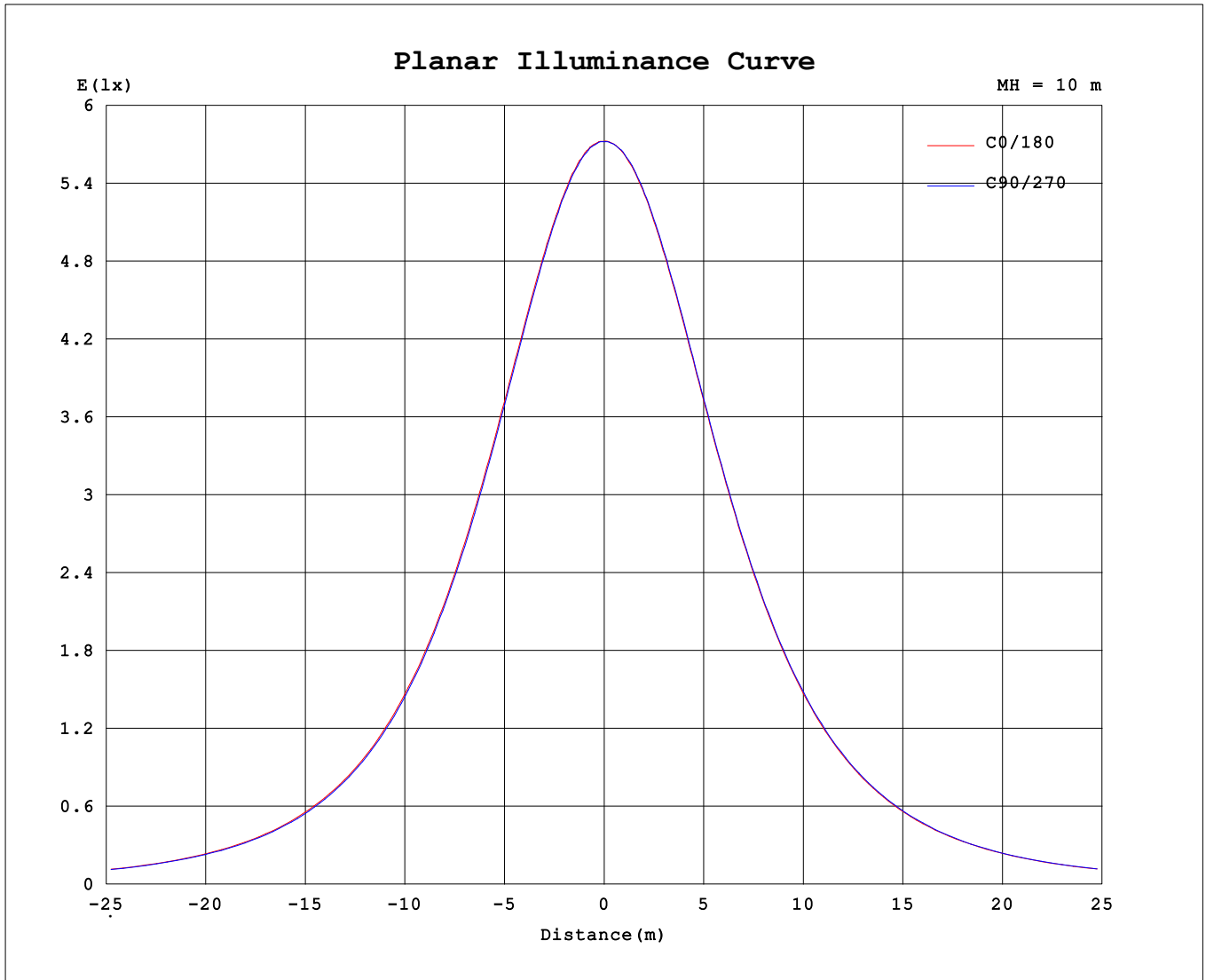
AvgL	cd/m2
L_0~180 (65) av	5230
L_0~180 (75) av	5519
L_0~180 (85) av	9035
L_90~270 (65) av	5211
L_90~270 (75) av	5515
L_90~270 (85) av	9071
L_45 (65) av	5215
L_45 (75) av	5508
L_45 (85) av	9039

Standard: GB/T 29293-2012

C Range: 0 - 360DEG  
 C Interval: 22.5DEG  
 Test Speed: HIGH  
 Temperature:25.3℃  
 Operators:linye  
 Test Date:2026-03-05

γ Range: 0 - 180DEG  
 γ Interval: 0.5DEG  
 Test System:EVERFINE GO-R5000\_V2 SYSTEM V2.00.459  
 Humidity:58.9%  
 Test Distance:26.000m [K=1.0000]  
 Remarks:

**Planar Illuminance Curve**



C Range: 0 - 360DEG  
 C Interval: 22.5DEG  
 Test Speed: HIGH  
 Temperature: 25.3°C  
 Operators: linye  
 Test Date: 2026-03-05

γ Range: 0 - 180DEG  
 γ Interval: 0.5DEG  
 Test System: EVERFINE GO-R5000\_V2 SYSTEM V2.00.459  
 Humidity: 58.9%  
 Test Distance: 26.000m [K=1.0000]  
 Remarks:

LUMINOUS DISTRIBUTION INTENSITY DATA

Test:U:119.92V I:0.2162A P:24.049W PF:0.9276 Freq:60.00Hz Lamp Flux:2190.75x1 lm		
NAME: 15寸北美吸顶灯	TYPE: 吸顶灯	WEIGHT: 1
SPEC.: /	DIM.: d=0.38	SERIAL No.: SY2500238-3#3000K
MFR.: 研发中心	SUR.: d=0.38	Shielding Angle: /

Table--1

UNIT: cd

C (DEG) \ γ (DEG)	0	22.5	45	67.5	90	112.5	135	157.5	180	202.5	225	247.5	270	292.5	315	337.5			
0	572	572	572	572	572	572	572	572	572	572	572	572	572	572	572	572			
5	571	571	571	570	570	571	570	571	571	571	571	572	572	572	571	571			
10	566	565	565	565	565	565	564	565	566	566	567	567	568	568	567	567			
15	557	556	556	555	555	555	555	556	558	557	558	559	560	559	558	558			
20	544	543	542	541	541	541	541	542	545	545	545	547	547	546	545	546			
25	527	524	524	523	523	523	523	525	527	528	528	529	529	529	528	528			
30	504	502	501	500	500	500	501	503	505	506	507	508	508	507	506	506			
35	478	476	475	474	473	473	475	477	479	480	481	482	482	482	481	480			
40	448	446	444	443	443	443	444	447	449	451	452	453	453	452	452	451			
45	414	412	411	409	409	409	410	413	416	418	419	420	420	419	418	417			
50	377	374	373	371	371	371	373	375	379	381	382	383	383	382	381	380			
55	336	334	333	331	331	331	333	336	340	341	342	343	343	342	340	340			
60	294	291	290	288	288	288	290	292	297	298	300	301	300	299	298	297			
65	249	247	245	245	244	245	246	248	252	254	256	256	255	254	253	252			
70	204	202	201	201	201	201	202	204	207	209	210	210	209	208	207	206			
75	160	159	159	159	159	159	159	161	164	165	166	166	165	163	163	162			
80	121	121	121	121	121	121	121	122	124	124	125	125	124	123	122	122			
85	88.7	89.0	89.5	90.0	90.1	90.0	89.6	89.6	90.0	90.2	90.4	90.1	89.2	88.0	87.8	88.4			
90	66.0	66.9	67.9	68.8	69.0	68.4	67.4	66.6	66.5	66.1	65.9	65.5	64.8	63.9	64.2	65.2			
95	55.1	56.2	57.4	58.1	58.5	58.0	56.8	55.6	54.2	53.1	52.8	52.1	51.3	50.9	51.6	53.3			
100	49.7	51.0	52.1	52.9	53.2	52.7	51.5	50.1	48.3	47.1	46.3	45.5	44.8	44.8	45.7	47.4			
105	47.7	49.0	50.2	50.9	51.2	50.5	49.5	48.2	46.3	44.9	43.9	42.9	42.5	42.6	43.8	45.4			
110	47.3	48.7	49.7	50.5	50.8	50.3	49.2	48.0	46.3	45.0	44.0	43.1	42.6	42.7	43.8	45.4			
115	47.2	48.4	49.5	50.5	50.7	50.3	49.2	48.0	46.4	45.0	44.1	43.3	42.6	42.8	43.9	45.3			
120	47.1	48.1	49.3	50.1	50.4	50.1	49.0	48.0	46.3	44.9	44.1	43.3	42.6	42.8	43.9	45.0			
125	46.8	47.8	49.0	49.8	50.2	49.8	48.9	47.8	46.1	44.8	44.0	43.2	42.6	42.8	43.8	44.8			
130	46.3	47.3	48.4	49.4	49.8	49.5	48.5	47.5	45.6	44.8	43.8	43.2	42.6	42.7	43.5	44.8			
135	45.8	46.8	47.9	48.8	49.1	48.8	48.0	47.1	45.4	44.5	43.4	42.7	42.4	42.6	43.2	44.0			
140	45.3	46.2	47.4	48.3	48.7	48.3	47.6	46.7	44.9	44.0	43.2	42.6	42.3	42.4	42.8	43.4			
145	44.8	45.9	47.0	48.0	48.3	47.8	47.3	46.4	44.7	43.9	43.1	42.6	42.3	42.3	42.8	43.2			
150	44.8	45.9	46.9	47.9	48.1	47.7	47.2	46.3	44.7	43.9	43.2	42.8	42.5	42.5	43.0	43.2			
155	44.8	45.6	46.3	47.1	47.2	47.4	46.9	46.3	44.6	43.9	43.4	43.2	42.9	42.6	43.3	43.2			
160	44.3	44.6	45.3	45.5	45.5	45.5	45.7	45.4	43.4	43.2	43.2	43.2	42.9	42.5	42.7	42.0			
165	37.7	38.6	39.1	39.6	40.2	40.3	40.2	40.3	38.3	38.0	37.8	38.3	38.7	38.7	38.4	38.0			
170	33.7	34.2	34.8	35.4	36.1	35.9	36.0	36.5	34.7	34.7	35.0	35.6	35.9	35.5	34.9	35.1			
175	37.6	38.7	39.5	39.4	39.3	39.0	38.4	38.4	38.6	38.1	36.7	34.5	33.3	32.6	32.7	33.9			
180	39.7	39.7	39.6	39.5	39.5	39.2	39.4	40.0	40.2	39.7	39.7	39.6	39.6	39.5	39.2	39.4			

C Range: 0 - 360DEG  
 C Interval: 22.5DEG  
 Test Speed: HIGH  
 Temperature:25.3℃  
 Operators:linye  
 Test Date:2026-03-05

γ Range: 0 - 180DEG  
 γ Interval: 0.5DEG  
 Test System:EVERFINE GO-R5000\_V2 SYSTEM V2.00.459  
 Humidity:58.9%  
 Test Distance:26.000m [K=1.0000]  
 Remarks: