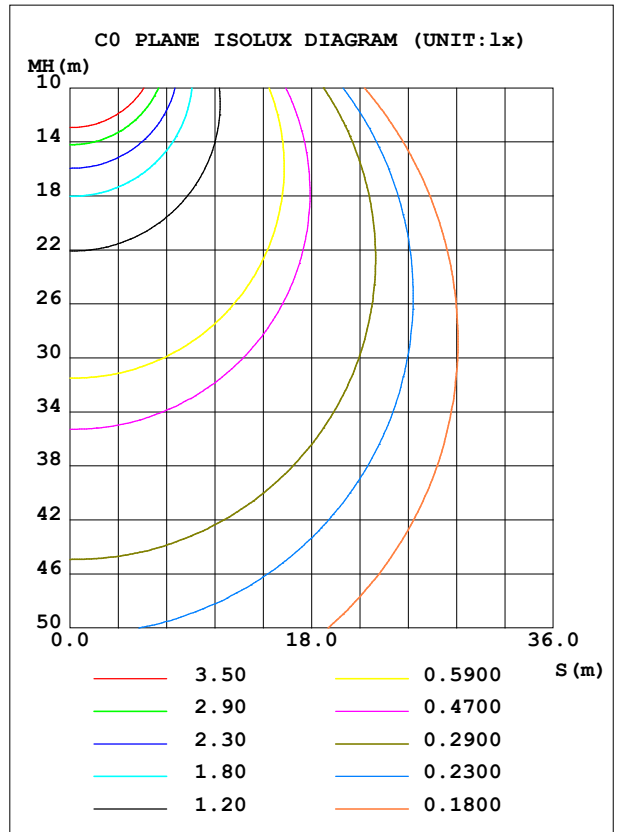
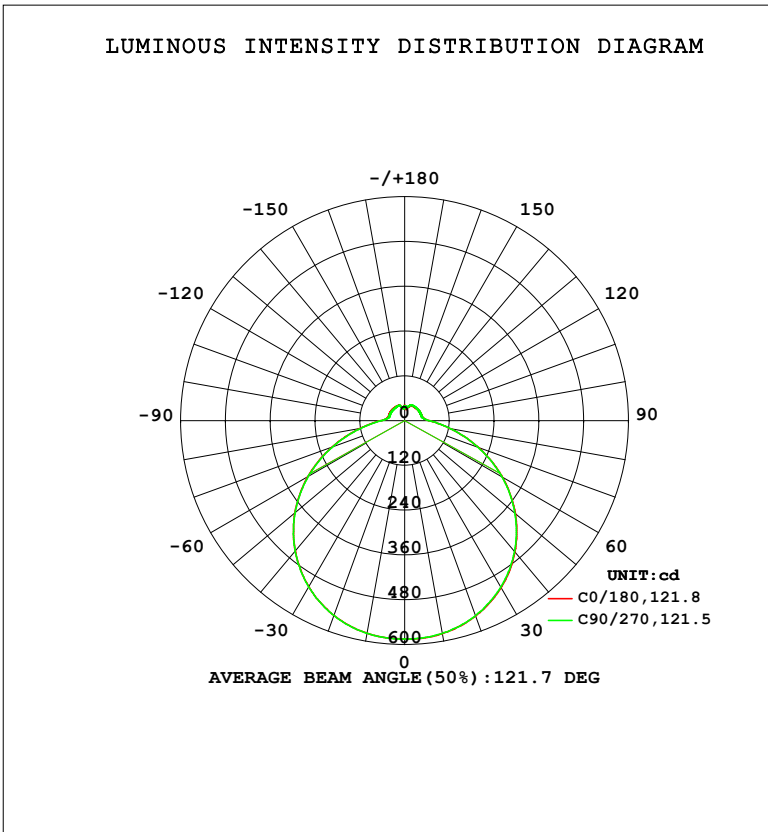


**LUMINAIRE PHOTOMETRIC TEST REPORT**

Test:U:119.90V I:0.2183A P:24.197W PF:0.9243 Freq:60.00Hz Lamp Flux:2218.31x1 lm		
NAME: 15寸北美吸顶灯	TYPE: 吸顶灯	WEIGHT: 1
SPEC.: /	DIM.: d=0.38	SERIAL No.: SY2500238-3#3500K
MFR.: 研发中心	SUR.: d=0.38	Shielding Angle: /

DATA OF LAMP		PHOTOMETRIC DATA			
MODEL	3500K	Imax (cd)	585.5	S/MH (C0/180)	1.30
NOMINAL POWER (W)	/	LOR (%)	100.0	S/MH (C90/270)	1.30
RATED VOLTAGE (V)	120	TOTAL FLUX (lm)	2218.3	$\eta$ UP, DN (C0-180)	6.7, 43.6
NOMINAL FLUX (lm)	2218.31	CIE CLASS	SEMI-D.	$\eta$ UP, DN (C180-360)	6.5, 43.3
LAMPS INSIDE	1	$\eta$ up (%)	13.2	CIBSE SHR NOM	1.50
TEST VOLTAGE (V)	/	$\eta$ down (%)	86.8	CIBSE SHR MAX	1.50



C Range: 0 - 360DEG  
 C Interval: 22.5DEG  
 Test Speed: HIGH  
 Temperature: 25.3°C  
 Operators: linye  
 Test Date: 2026-03-05

$\gamma$  Range: 0 - 180DEG  
 $\gamma$  Interval: 0.5DEG  
 Test System: EVERFINE GO-R5000\_V2 SYSTEM V2.00.459  
 Humidity: 58.9%  
 Test Distance: 26.000m [K=1.0000]  
 Remarks:

ZONAL FLUX DIAGRAM

ZONAL FLUX DIAGRAM:

γ	C0	C45	C90	C135	C180	C225	C270	C315	γ	Φ zone	Φ total	%lum, lamp
5	584.6	583.9	584.0	584.1	583.6	583.2	583.9	584.5	0- 5	13.98	13.98	0.63,0.63
10	579.7	578.9	578.9	578.8	578.4	578.0	578.7	579.8	5- 10	41.60	55.58	2.51,2.51
15	570.3	570.4	569.7	568.7	568.9	568.5	569.2	570.8	10- 15	68.13	123.7	5.58,5.58
20	556.8	556.8	556.1	554.7	555.4	554.8	555.4	557.1	15- 20	92.75	216.5	9.76,9.76
25	538.6	538.9	537.7	535.9	536.6	536.8	537.1	538.7	20- 25	114.7	331.1	14.9,14.9
30	517.0	516.5	515.3	513.8	513.8	513.3	514.4	516.3	25- 30	133.2	464.3	20.9,20.9
35	490.5	490.3	488.7	486.9	486.8	486.8	487.3	489.5	30- 35	147.7	612.1	27.6,27.6
40	459.5	459.4	458.2	456.1	455.8	455.6	456.6	458.7	35- 40	157.8	769.8	34.7,34.7
45	425.4	425.6	423.4	421.7	421.2	421.6	421.8	423.7	40- 45	163.0	932.9	42.1,42.1
50	387.7	387.4	385.7	383.5	383.9	383.1	383.7	385.6	45- 50	163.3	1096	49.4,49.4
55	346.1	346.8	344.8	342.4	342.8	342.2	342.5	344.4	50- 55	158.5	1255	56.6,56.6
60	302.9	303.0	301.5	299.0	299.4	298.4	298.1	300.3	55- 60	148.9	1404	63.3,63.3
65	256.8	257.1	255.4	253.5	253.5	252.1	251.9	254.0	60- 65	134.7	1538	69.3,69.3
70	210.4	210.9	209.5	207.1	207.0	205.8	205.0	207.5	65- 70	116.9	1655	74.6,74.6
75	165.1	166.1	164.9	162.4	162.2	161.1	160.0	162.0	70- 75	96.76	1752	79,79
80	124.4	125.5	124.5	122.2	121.5	120.2	119.2	121.5	75- 80	76.11	1828	82.4,82.4
85	90.53	91.58	90.89	88.83	87.39	86.35	85.54	86.87	80- 85	56.90	1885	85,85
90	66.39	67.04	66.40	64.72	64.07	63.60	62.98	63.96	85- 90	41.52	1926	86.8,86.8
95	54.55	54.79	54.18	53.02	52.14	51.87	51.07	51.81	90- 95	31.88	1958	88.3,88.3
100	48.75	48.76	48.25	47.51	46.71	46.41	45.52	46.16	95-100	27.02	1985	89.5,89.5
105	46.64	46.66	46.25	45.84	45.25	44.61	43.72	44.46	100-105	24.65	2010	90.6,90.6
110	46.21	46.46	46.10	45.65	45.36	44.71	43.91	44.65	105-110	23.71	2034	91.7,91.7
115	46.21	46.46	46.15	46.07	45.59	44.75	43.91	44.74	110-115	23.00	2057	92.7,92.7
120	46.21	46.46	46.29	46.17	45.59	44.71	43.91	44.74	115-120	22.11	2079	93.7,93.7
125	46.06	46.46	46.29	46.22	45.45	44.66	43.87	44.36	120-125	21.01	2100	94.7,94.7
130	45.87	46.37	46.38	46.26	45.30	44.61	43.91	44.13	125-130	19.72	2120	95.5,95.5
135	45.40	46.13	46.34	46.26	45.16	44.42	43.58	43.94	130-135	18.27	2138	96.4,96.4
140	45.16	45.85	46.34	46.17	44.83	44.23	43.58	43.94	135-140	16.68	2155	97.1,97.1
145	44.97	45.56	46.19	45.93	44.78	44.28	43.77	44.08	140-145	15.00	2170	97.8,97.8
150	44.97	45.56	46.15	45.88	44.78	44.52	43.96	44.60	145-150	13.25	2183	98.4,98.4
155	44.97	45.51	45.81	45.88	44.78	44.66	43.96	44.51	150-155	11.39	2194	98.9,98.9
160	44.78	45.04	44.67	45.40	43.87	43.99	43.87	43.65	155-160	9.398	2204	99.3,99.3
165	38.15	39.06	39.89	40.44	38.88	38.34	38.89	38.53	160-165	6.905	2210	99.6,99.6
170	34.11	35.12	36.30	36.55	35.46	35.49	35.99	34.77	165-170	4.454	2215	99.8,99.8
175	37.88	39.90	39.50	38.67	39.13	37.23	33.64	32.75	170-175	2.450	2217	100,100
180	40.07	40.10	39.93	39.61	40.50	40.15	40.02	39.52	175-180	0.9389	2218	100,100
DEG	LUMINOUS INTENSITY:cd									UNIT:lm		

Conical surface Flux(90deg): 932.87 lm

%lum = 42.1%  
%lamp = 42.1%

Conical surface Flux(120deg): 1403.5 lm

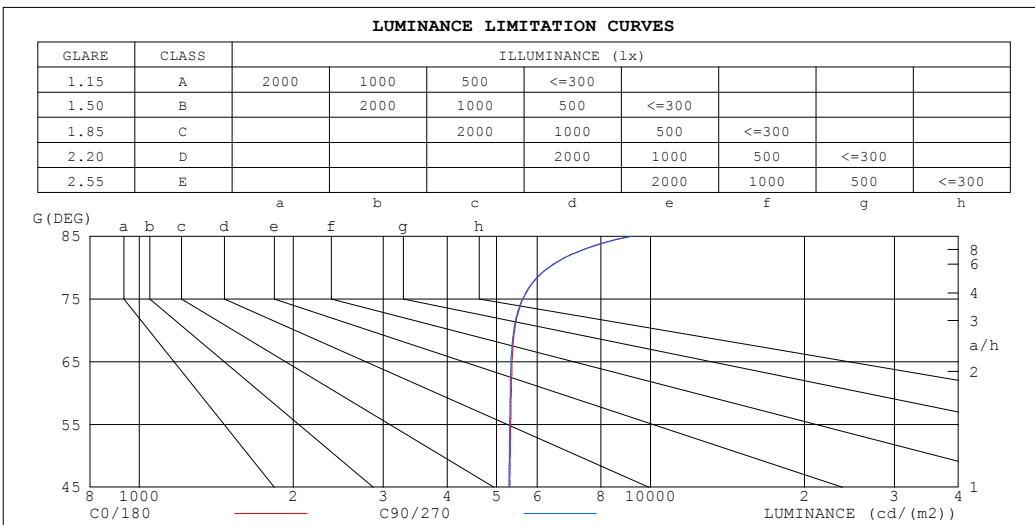
%lum = 63.3%  
%lamp = 63.3%

C Range: 0 - 360DEG  
C Interval: 22.5DEG  
Test Speed: HIGH  
Temperature:25.3°C  
Operators:linye  
Test Date:2026-03-05

γ Range: 0 - 180DEG  
γ Interval: 0.5DEG  
Test System:EVERFINE GO-R5000\_V2 SYSTEM V2.00.459  
Humidity:58.9%  
Test Distance:26.000m [K=1.0000]  
Remarks:

**LUMINANCE LIMITATION CURVES**

Test:U:119.90V I:0.2183A P:24.197W PF:0.9243 Freq:60.00Hz Lamp Flux:2218.31x1 lm		
NAME: 15寸北美吸顶灯	TYPE: 吸顶灯	WEIGHT: 1
SPEC.: /	DIM.: d=0.38	SERIAL No.: SY2500238-3#3500K
MFR.: 研发中心	SUR.: d=0.38	Shielding Angle: /



LUMINANCE cd/ (m2)		
G (DEG)	C0/180	C90/270
85	9161	9197
80	6317	6322
75	5626	5619
70	5425	5402
65	5358	5330
60	5342	5317
55	5322	5301
50	5319	5291
45	5305	5280

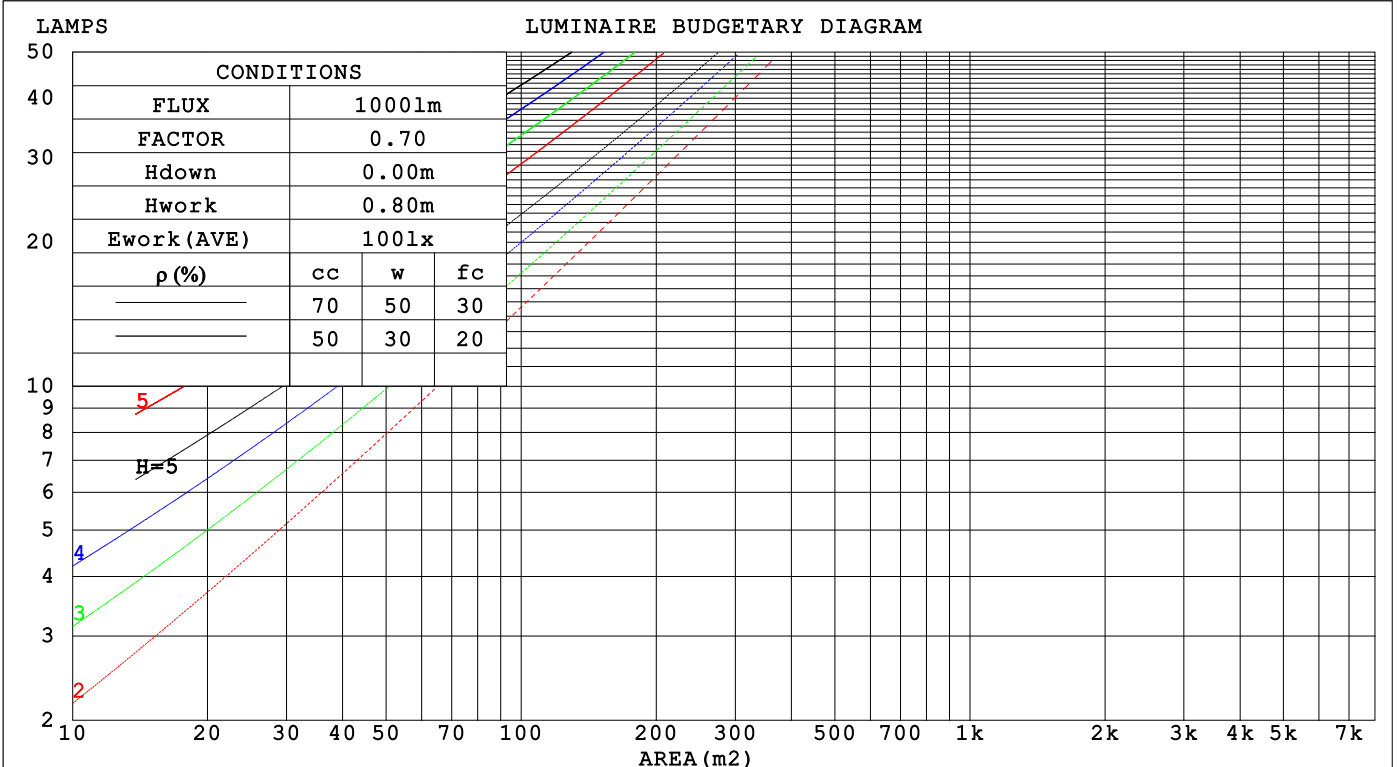
C Range: 0 - 360DEG  
 C Interval: 22.5DEG  
 Test Speed: HIGH  
 Temperature:25.3°C  
 Operators:linye  
 Test Date:2026-03-05

γ Range: 0 - 180DEG  
 γ Interval: 0.5DEG  
 Test System:EVERFINE GO-R5000\_V2 SYSTEM V2.00.459  
 Humidity:58.9%  
 Test Distance:26.000m [K=1.0000]  
 Remarks:

CU AND LUMINAIRE BUDGETARY ESTIMATE DIAGRAM

Test:U:119.90V I:0.2183A P:24.197W PF:0.9243 Freq:60.00Hz Lamp Flux:2218.31x1 lm		
NAME: 15寸北美吸顶灯	TYPE: 吸顶灯	WEIGHT: 1
SPEC.: /	DIM.: d=0.38	SERIAL No.: SY2500238-3#3500K
MFR.: 研发中心	SUR.: d=0.38	Shielding Angle: /

ρcc	80%			70%			50%			30%			10%			0
ρw	50%	30%	10%	50%	30%	10%	50%	30%	10%	50%	30%	10%	50%	30%	10%	0
ρfc	20%			20%			20%			20%			20%			0
RCR	RCR:Room Cavity Ratio      Coefficients of Utilization(CU)															
0.0	1.16	1.16	1.16	1.12	1.12	1.12	1.04	1.04	1.04	.97	.97	.97	.90	.90	.90	.87
1.0	.99	.94	.90	.95	.91	.87	.89	.85	.82	.83	.80	.77	.77	.75	.73	.70
2.0	.85	.78	.72	.82	.76	.70	.77	.71	.67	.71	.67	.63	.67	.63	.60	.57
3.0	.75	.66	.59	.72	.64	.58	.67	.61	.55	.63	.57	.53	.58	.54	.50	.47
4.0	.66	.57	.50	.63	.55	.49	.59	.52	.47	.55	.49	.45	.52	.47	.43	.40
5.0	.58	.49	.42	.57	.48	.42	.53	.46	.40	.50	.43	.38	.46	.41	.37	.34
6.0	.52	.43	.37	.51	.42	.36	.48	.40	.35	.45	.38	.33	.42	.36	.32	.30
7.0	.47	.38	.32	.46	.38	.32	.43	.36	.31	.41	.34	.29	.38	.33	.28	.26
8.0	.43	.35	.29	.42	.34	.28	.39	.32	.27	.37	.31	.26	.35	.29	.25	.23
9.0	.39	.31	.26	.38	.31	.25	.36	.29	.24	.34	.28	.24	.32	.27	.23	.21
10.0	.36	.28	.23	.35	.28	.23	.33	.27	.22	.32	.26	.21	.30	.25	.21	.19



C Range: 0 - 360DEG  
 C Interval: 22.5DEG  
 Test Speed: HIGH  
 Temperature:25.3°C  
 Operators:linye  
 Test Date:2026-03-05

γ Range: 0 - 180DEG  
 γ Interval: 0.5DEG  
 Test System:EVERFINE GO-R5000\_V2 SYSTEM V2.00.459  
 Humidity:58.9%  
 Test Distance:26.000m [K=1.0000]  
 Remarks:

WEC AND CCEC

Test:U:119.90V I:0.2183A P:24.197W PF:0.9243 Freq:60.00Hz Lamp Flux:2218.31x1 lm		
NAME: 15寸北美吸顶灯	TYPE: 吸顶灯	WEIGHT: 1
SPEC.: /	DIM.: d=0.38	SERIAL No.: SY2500238-3#3500K
MFR.: 研发中心	SUR.: d=0.38	Shielding Angle: /

$\rho_{CC}$	80%			70%			50%			30%			10%			0
$\rho_w$	50%	30%	10%	50%	30%	10%	50%	30%	10%	50%	30%	10%	50%	30%	10%	0
$\rho_{fc}$	20%			20%			20%			20%			20%			0
RCR	RCR:Room Cavity Ratio						Wall Exitance Coefficients(WEC)									
0.0																
1.0	.343	.195	.062	.332	.189	.060	.311	.179	.057	.292	.168	.054	.274	.159	.051	
2.0	.309	.169	.052	.299	.165	.051	.280	.156	.048	.263	.148	.046	.247	.140	.044	
3.0	.280	.149	.045	.271	.145	.044	.254	.138	.042	.239	.131	.040	.224	.124	.038	
4.0	.256	.133	.039	.248	.130	.038	.232	.123	.037	.218	.117	.035	.205	.111	.034	
5.0	.234	.119	.035	.227	.117	.034	.213	.111	.033	.200	.106	.031	.188	.101	.030	
6.0	.216	.108	.031	.210	.106	.030	.197	.101	.029	.185	.096	.028	.174	.092	.027	
7.0	.200	.099	.028	.194	.097	.028	.183	.092	.027	.172	.088	.026	.162	.084	.025	
8.0	.187	.091	.026	.181	.089	.025	.171	.085	.024	.161	.081	.023	.151	.078	.023	
9.0	.174	.084	.024	.169	.083	.023	.160	.079	.022	.151	.076	.022	.142	.072	.021	
10.0	.164	.078	.022	.159	.077	.021	.150	.074	.021	.142	.070	.020	.134	.067	.019	

$\rho_{CC}$	80%			70%			50%			30%			10%			0
$\rho_w$	50%	30%	10%	50%	30%	10%	50%	30%	10%	50%	30%	10%	50%	30%	10%	0
$\rho_{fc}$	20%			20%			20%			20%			20%			0
RCR	RCR:Room Cavity Ratio						Ceiling Cavity Exitance Coefficients(CCEC)									
0.0																
1.0	.291	.291	.291	.248	.248	.248	.170	.170	.170	.097	.097	.097	.031	.031	.031	
2.0	.276	.234	.198	.237	.201	.171	.162	.139	.119	.094	.081	.070	.030	.026	.023	
3.0	.269	.217	.175	.230	.187	.152	.158	.130	.106	.091	.076	.063	.029	.025	.021	
4.0	.261	.204	.160	.224	.176	.139	.154	.123	.098	.089	.072	.058	.029	.023	.019	
5.0	.254	.194	.150	.218	.168	.130	.150	.117	.092	.087	.069	.055	.028	.022	.018	
6.0	.247	.186	.142	.212	.161	.124	.146	.113	.088	.085	.066	.052	.027	.022	.017	
7.0	.240	.179	.137	.206	.155	.119	.142	.109	.084	.083	.064	.050	.027	.021	.017	
8.0	.233	.173	.132	.201	.150	.115	.139	.106	.082	.081	.062	.049	.026	.020	.016	
9.0	.227	.169	.129	.196	.146	.113	.136	.103	.080	.079	.061	.048	.026	.020	.016	
10.0	.221	.164	.127	.191	.143	.110	.132	.100	.078	.077	.059	.047	.025	.020	.016	

C Range: 0 - 360DEG  
 C Interval: 22.5DEG  
 Test Speed: HIGH  
 Temperature:25.3°C  
 Operators:linye  
 Test Date:2026-03-05

$\gamma$  Range: 0 - 180DEG  
 $\gamma$  Interval: 0.5DEG  
 Test System:EVERFINE GO-R5000\_V2 SYSTEM V2.00.459  
 Humidity:58.9%  
 Test Distance:26.000m [K=1.0000]  
 Remarks:

**UGR(Unified Glare Rating) Table**

Test:U:119.90V I:0.2183A P:24.197W PF:0.9243 Freq:60.00Hz										
Lamp Flux:2218.31x1 lm										
NAME: 15寸北美吸顶灯				TYPE: 吸顶灯				WEIGHT: 1		
SPEC.: /				DIM.: d=0.38				SERIAL No.: SY2500238-3#3500K		
MFR.: 研发中心				SUR.: d=0.38				Shielding Angle: /		
ceiling/cavity	0.7	0.7	0.5	0.5	0.3	0.7	0.7	0.5	0.5	0.3
walls	0.5	0.3	0.5	0.3	0.3	0.5	0.3	0.5	0.3	0.3
working plane	0.2	0.2	0.2	0.2	0.2	0.2	0.2	0.2	0.2	0.2
Room dimensions	Viewed crosswise					Viewed endwise				
x = 2H y = 2H	18.0	19.4	18.4	19.8	20.2	18.0	19.3	18.4	19.8	20.2
3H	19.8	21.0	20.2	21.5	22.0	19.7	21.0	20.2	21.5	22.0
4H	20.6	21.8	21.1	22.3	22.8	20.6	21.8	21.1	22.3	22.8
6H	21.4	22.5	21.9	23.0	23.6	21.4	22.5	21.9	23.0	23.6
8H	21.8	22.9	22.3	23.4	24.0	21.8	22.9	22.3	23.4	24.0
12H	22.2	23.3	22.8	23.8	24.4	22.2	23.3	22.8	23.8	24.4
4H 2H	18.6	19.8	19.1	20.3	20.8	18.6	19.8	19.1	20.3	20.8
3H	20.6	21.7	21.1	22.2	22.8	20.6	21.6	21.1	22.2	22.7
4H	21.6	22.6	22.2	23.1	23.7	21.6	22.5	22.1	23.1	23.7
6H	22.6	23.4	23.1	24.0	24.6	22.5	23.4	23.1	24.0	24.6
8H	23.0	23.8	23.6	24.4	25.1	23.0	23.8	23.6	24.4	25.1
12H	23.6	24.3	24.2	24.9	25.6	23.6	24.3	24.2	24.9	25.6
8H 4H	22.0	22.8	22.6	23.4	24.0	21.9	22.8	22.6	23.3	24.0
6H	23.2	23.8	23.8	24.4	25.1	23.1	23.8	23.8	24.4	25.1
8H	23.8	24.4	24.4	25.0	25.8	23.8	24.4	24.4	25.0	25.8
12H	24.5	25.0	25.2	25.7	26.4	24.5	25.0	25.2	25.7	26.4
12H 4H	22.0	22.7	22.6	23.4	24.0	22.0	22.7	22.6	23.3	24.0
6H	23.3	23.9	23.9	24.5	25.3	23.3	23.9	23.9	24.5	25.2
8H	24.0	24.5	24.7	25.2	25.9	24.0	24.5	24.7	25.2	25.9
Variations with the observer position at spacings(CIE Pub.117):										
S = 1.0H	+ 0.1 / - 0.1					+ 0.1 / - 0.1				
1.5H	+ 0.2 / - 0.3					+ 0.2 / - 0.3				
2.0H	+ 0.1 / - 0.3					+ 0.2 / - 0.4				

CIE Pub.117, 2218 lm Total Lamp Luminous Flux Corrected (8log(F/F0) = 2.8)  
 Area: 0.113411 m2

C Range: 0 - 360DEG  
 C Interval: 22.5DEG  
 Test Speed: HIGH  
 Temperature:25.3°C  
 Operators:linye  
 Test Date:2026-03-05

γ Range: 0 - 180DEG  
 γ Interval: 0.5DEG  
 Test System:EVERFINE GO-R5000\_V2 SYSTEM V2.00.459  
 Humidity:58.9%  
 Test Distance:26.000m [K=1.0000]  
 Remarks:

**UTILIZATION FACTORS TABLE**

Test:U:119.90V I:0.2183A P:24.197W PF:0.9243 Freq:60.00Hz Lamp Flux:2218.31x1 lm		
NAME: 15寸北美吸顶灯	TYPE: 吸顶灯	WEIGHT: 1
SPEC.: /	DIM.: d=0.38	SERIAL No.: SY2500238-3#3500K
MFR.: 研发中心	SUR.: d=0.38	Shielding Angle: /

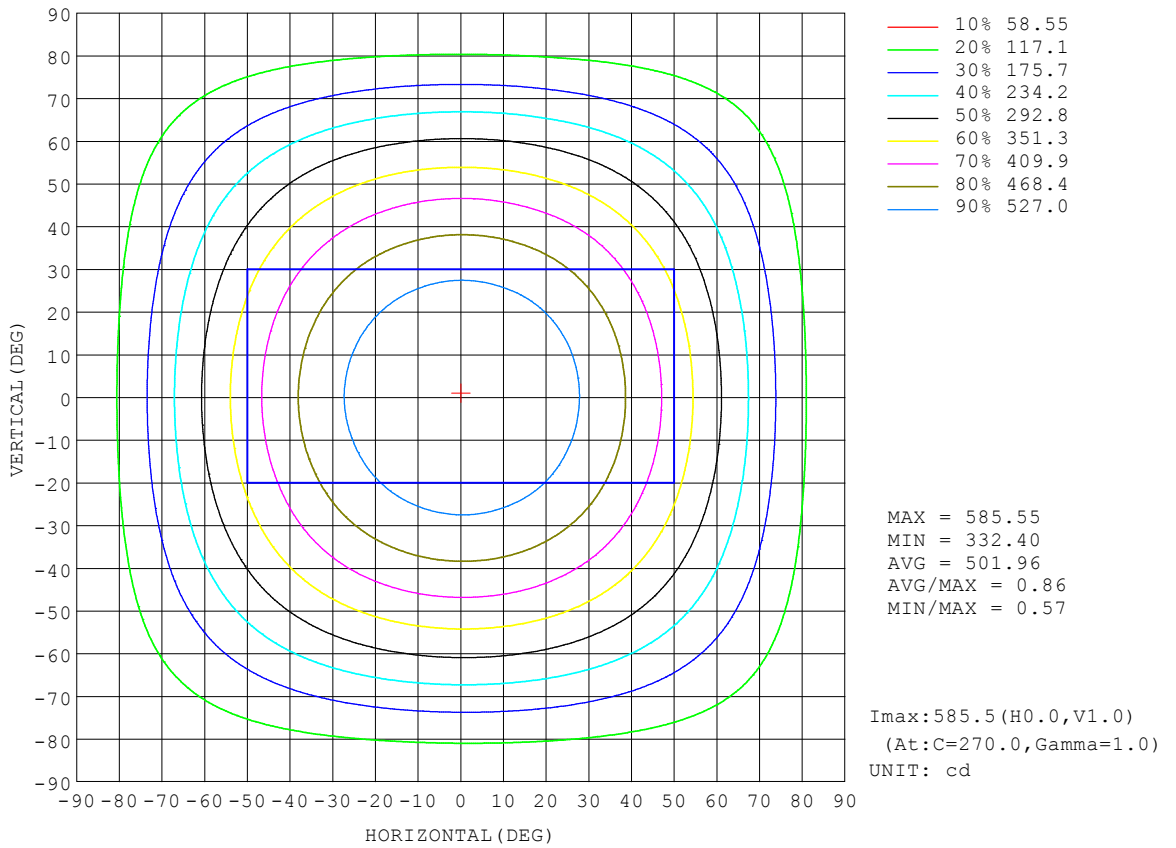
REFLECTANCE										
Ceiling	0.8	0.8	0.8	0.7	0.7	0.7	0.5	0.5	0.5	0
Walls	0.7	0.5	0.3	0.7	0.5	0.3	0.7	0.5	0.3	0
Working plane	0.2	0.2	0.2	0.2	0.2	0.2	0.2	0.2	0.2	0
ROOM INDEX	UTILIZATION FACTORS (PERCENT) $k(RI) \times RCR = 5$									
k = 0.60	51	39	32	50	39	32	49	38	32	25
0.80	61	49	41	60	48	41	57	47	40	32
1.00	69	57	49	67	56	49	64	57	48	39
1.25	76	65	57	74	63	56	70	61	54	45
1.50	81	70	62	79	69	61	74	66	59	50
2.00	88	79	71	86	77	70	80	73	67	56
2.50	93	84	77	90	81	75	84	77	72	60
3.00	96	88	82	93	86	80	87	81	76	64
4.00	101	94	88	97	91	86	91	86	81	69
5.00	103	97	92	100	94	90	93	89	85	71
ROOM INDEX	UF(total)									Direct
According to DIN EN 13032-2 2004			Suspended				SHRNOM = 1.25			

C Range: 0 - 360DEG  
 C Interval: 22.5DEG  
 Test Speed: HIGH  
 Temperature:25.3°C  
 Operators:linye  
 Test Date:2026-03-05

$\gamma$  Range: 0 - 180DEG  
 $\gamma$  Interval: 0.5DEG  
 Test System:EVERFINE GO-R5000\_V2 SYSTEM V2.00.459  
 Humidity:58.9%  
 Test Distance:26.000m [K=1.0000]  
 Remarks:

**ISOCANDELA DIAGRAM**

Test:U:119.90V I:0.2183A P:24.197W PF:0.9243 Freq:60.00Hz Lamp Flux:2218.31x1 lm		
NAME: 15寸北美吸顶灯	TYPE: 吸顶灯	WEIGHT: 1
SPEC.: /	DIM.: d=0.38	SERIAL No.: SY2500238-3#3500K
MFR.: 研发中心	SUR.: d=0.38	Shielding Angle: /

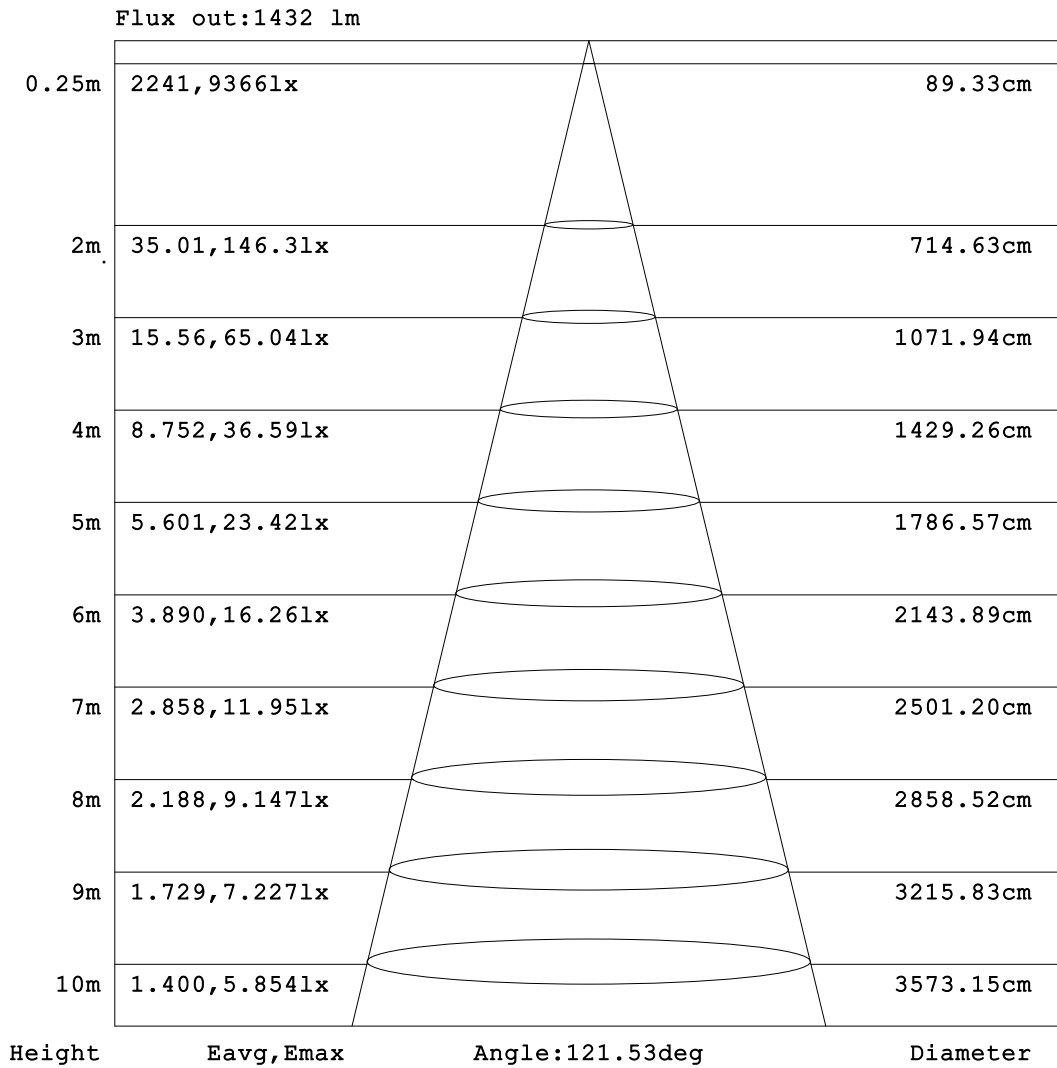


C Range: 0 - 360DEG  
 C Interval: 22.5DEG  
 Test Speed: HIGH  
 Temperature:25.3°C  
 Operators:linye  
 Test Date:2026-03-05

γ Range: 0 - 180DEG  
 γ Interval: 0.5DEG  
 Test System:EVERFINE GO-R5000\_V2 SYSTEM V2.00.459  
 Humidity:58.9%  
 Test Distance:26.000m [K=1.0000]  
 Remarks:

**AAI Figure**

Test:U:119.90V I:0.2183A P:24.197W PF:0.9243 Freq:60.00Hz Lamp Flux:2218.31x1 lm		
NAME: 15寸北美吸顶灯	TYPE: 吸顶灯	WEIGHT: 1
SPEC.: /	DIM.: d=0.38	SERIAL No.: SY2500238-3#3500K
MFR.: 研发中心	SUR.: d=0.38	Shielding Angle: /



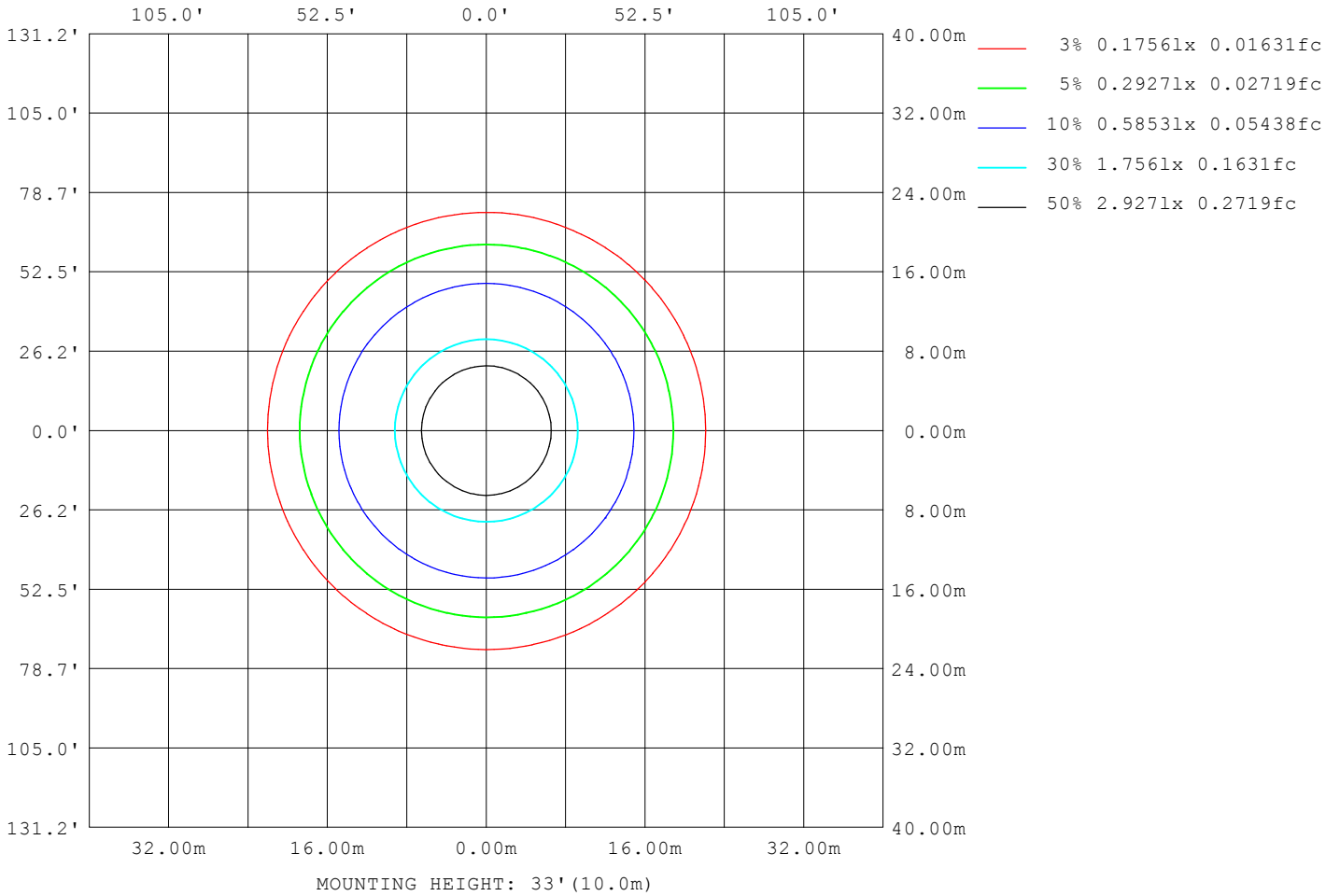
Note: The Curves indicate the illuminated area and the average illumination when the luminaire is at different distance.

C Range: 0 - 360DEG  
C Interval: 22.5DEG  
Test Speed: HIGH  
Temperature: 25.3°C  
Operators: linye  
Test Date: 2026-03-05

γ Range: 0 - 180DEG  
γ Interval: 0.5DEG  
Test System: EVERFINE GO-R5000\_V2 SYSTEM V2.00.459  
Humidity: 58.9%  
Test Distance: 26.000m [K=1.0000]  
Remarks:

**ISOLUX DIAGRAM**

Test:U:119.90V I:0.2183A P:24.197W PF:0.9243 Freq:60.00Hz Lamp Flux:2218.31x1 lm		
NAME: 15寸北美吸顶灯	TYPE: 吸顶灯	WEIGHT: 1
SPEC.: /	DIM.: d=0.38	SERIAL No.: SY2500238-3#3500K
MFR.: 研发中心	SUR.: d=0.38	Shielding Angle: /



C Range: 0 - 360DEG  
 C Interval: 22.5DEG  
 Test Speed: HIGH  
 Temperature:25.3°C  
 Operators:linye  
 Test Date:2026-03-05

γ Range: 0 - 180DEG  
 γ Interval: 0.5DEG  
 Test System:EVERFINE GO-R5000\_V2 SYSTEM V2.00.459  
 Humidity:58.9%  
 Test Distance:26.000m [K=1.0000]  
 Remarks:

**LED Avg.L Report**

Test:U:119.90V I:0.2183A P:24.197W PF:0.9243 Freq:60.00Hz Lamp Flux:2218.31x1 lm		
NAME: 15寸北美吸顶灯	TYPE: 吸顶灯	WEIGHT: 1
SPEC.: /	DIM.: d=0.38	SERIAL No.: SY2500238-3#3500K
MFR.: 研发中心	SUR.: d=0.38	Shielding Angle: /

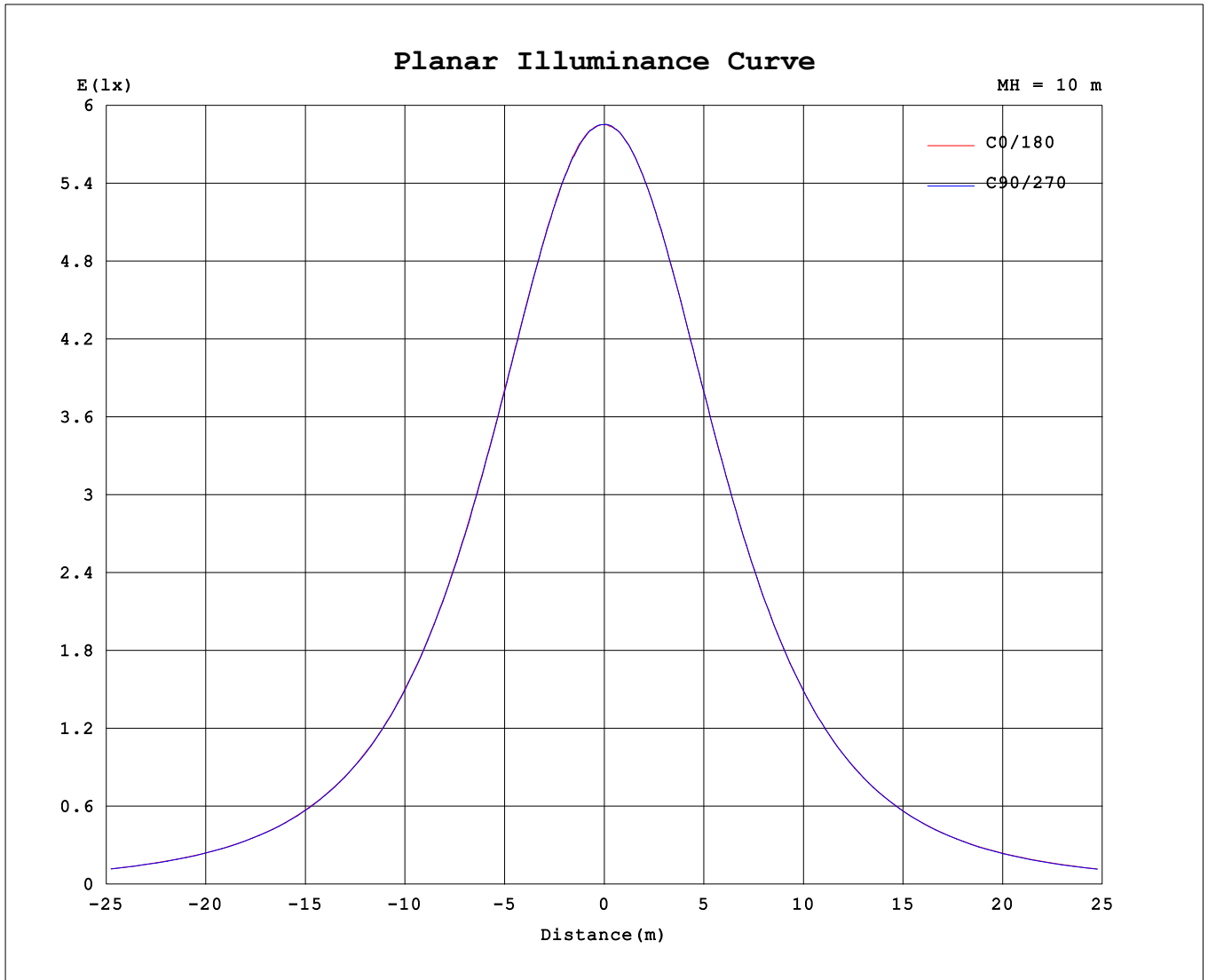
AvgL	cd/m2
L_0~180 (65) av	5323
L_0~180 (75) av	5577
L_0~180 (85) av	9000
L_90~270 (65) av	5292
L_90~270 (75) av	5535
L_90~270 (85) av	8925
L_45 (65) av	5303
L_45 (75) av	5550
L_45 (85) av	8944

Standard: GB/T 29293-2012

C Range: 0 - 360DEG  
 C Interval: 22.5DEG  
 Test Speed: HIGH  
 Temperature:25.3℃  
 Operators:linye  
 Test Date:2026-03-05

γ Range: 0 - 180DEG  
 γ Interval: 0.5DEG  
 Test System:EVERFINE GO-R5000\_V2 SYSTEM V2.00.459  
 Humidity:58.9%  
 Test Distance:26.000m [K=1.0000]  
 Remarks:

**Planar Illuminance Curve**



C Range: 0 - 360DEG  
 C Interval: 22.5DEG  
 Test Speed: HIGH  
 Temperature: 25.3°C  
 Operators: linye  
 Test Date: 2026-03-05

γ Range: 0 - 180DEG  
 γ Interval: 0.5DEG  
 Test System: EVERFINE GO-R5000\_V2 SYSTEM V2.00.459  
 Humidity: 58.9%  
 Test Distance: 26.000m [K=1.0000]  
 Remarks:

LUMINOUS DISTRIBUTION INTENSITY DATA

Test:U:119.90V I:0.2183A P:24.197W PF:0.9243 Freq:60.00Hz Lamp Flux:2218.31x1 lm		
NAME: 15寸北美吸顶灯	TYPE: 吸顶灯	WEIGHT: 1
SPEC.: /	DIM.: d=0.38	SERIAL No.: SY2500238-3#3500K
MFR.: 研发中心	SUR.: d=0.38	Shielding Angle: /

Table--1

UNIT: cd

C (DEG) \ γ (DEG)	0	22.5	45	67.5	90	112.5	135	157.5	180	202.5	225	247.5	270	292.5	315	337.5			
0	585	585	585	585	585	585	585	585	585	585	585	585	585	585	585	585			
5	585	584	584	584	584	584	584	583	584	584	583	584	584	584	585	584			
10	580	579	579	579	579	579	579	578	578	578	578	578	579	579	580	580			
15	570	570	570	570	570	569	569	569	569	569	568	569	569	570	571	570			
20	557	556	557	556	556	555	555	554	555	555	555	555	555	556	557	557			
25	539	538	539	538	538	536	536	536	537	537	537	537	537	538	539	539			
30	517	516	516	516	515	514	514	514	514	514	513	514	514	515	516	517			
35	490	490	490	489	489	487	487	486	487	487	487	487	487	488	490	490			
40	459	460	459	459	458	457	456	455	456	456	456	456	457	457	459	460			
45	425	426	426	425	423	422	422	421	421	422	422	422	422	423	424	425			
50	388	387	387	387	386	385	383	383	384	383	383	384	384	384	386	387			
55	346	347	347	346	345	344	342	342	343	342	342	342	343	343	344	346			
60	303	303	303	302	301	300	299	298	299	299	298	298	298	299	300	302			
65	257	257	257	257	255	254	254	252	253	253	252	252	252	252	254	256			
70	210	211	211	210	210	208	207	206	207	206	206	206	205	205	208	210			
75	165	166	166	166	165	163	162	161	162	162	161	160	160	160	162	165			
80	124	125	125	125	124	123	122	121	122	121	120	120	119	119	122	123			
85	90.5	91.2	91.6	91.5	90.9	89.8	88.8	87.8	87.4	86.8	86.3	86.1	85.5	85.6	86.9	88.9			
90	66.4	66.9	67.0	66.9	66.4	65.5	64.7	64.0	64.1	63.7	63.6	63.2	63.0	62.9	64.0	65.5			
95	54.6	54.9	54.8	54.6	54.2	53.6	53.0	52.6	52.1	52.0	51.9	51.5	51.1	51.0	51.8	53.3			
100	48.7	48.9	48.8	48.6	48.2	47.9	47.5	47.2	46.7	46.6	46.4	46.1	45.5	45.4	46.2	47.4			
105	46.6	46.9	46.7	46.5	46.2	46.0	45.8	45.6	45.3	45.0	44.6	44.2	43.7	43.7	44.5	45.4			
110	46.2	46.5	46.5	46.3	46.1	45.8	45.6	45.5	45.4	45.1	44.7	44.3	43.9	43.9	44.6	45.4			
115	46.2	46.5	46.5	46.3	46.1	46.2	46.1	45.6	45.6	45.3	44.8	44.3	43.9	43.9	44.7	45.4			
120	46.2	46.4	46.5	46.3	46.3	46.2	46.2	45.8	45.6	45.3	44.7	44.3	43.9	43.9	44.7	45.1			
125	46.1	46.4	46.5	46.3	46.3	46.2	46.2	46.0	45.4	45.2	44.7	44.0	43.9	43.9	44.4	44.9			
130	45.9	46.0	46.4	46.3	46.4	46.2	46.3	46.1	45.3	44.9	44.6	43.9	43.9	43.8	44.1	44.7			
135	45.4	45.8	46.1	46.3	46.3	46.2	46.3	46.1	45.2	44.7	44.4	43.9	43.6	43.5	43.9	44.2			
140	45.2	45.4	45.8	46.2	46.3	46.2	46.2	45.8	44.8	44.7	44.2	43.9	43.6	43.5	43.9	44.2			
145	45.0	45.3	45.6	46.0	46.2	45.9	45.9	45.8	44.8	44.7	44.3	44.0	43.8	43.7	44.1	44.2			
150	45.0	45.3	45.6	46.0	46.1	45.8	45.9	45.7	44.8	44.7	44.5	44.1	44.0	44.1	44.6	44.2			
155	45.0	45.3	45.5	45.9	45.8	45.8	45.9	45.7	44.8	44.7	44.7	44.1	44.0	44.1	44.5	44.2			
160	44.8	44.7	45.0	44.9	44.7	44.9	45.4	45.3	43.9	43.7	44.0	44.1	43.9	43.7	43.6	42.7			
165	38.1	38.8	39.1	39.4	39.9	40.2	40.4	40.5	38.9	38.7	38.3	38.7	38.9	38.8	38.5	38.4			
170	34.1	34.7	35.1	35.5	36.3	36.3	36.5	37.0	35.5	35.5	35.5	35.9	36.0	35.4	34.8	34.8			
175	37.9	39.1	39.9	39.7	39.5	39.4	38.7	38.5	39.1	38.7	37.2	35.2	33.6	32.7	32.8	33.9			
180	40.1	40.2	40.1	40.0	39.9	39.5	39.6	40.2	40.5	40.1	40.1	40.1	40.0	39.9	39.5	39.6			

C Range: 0 - 360DEG  
 C Interval: 22.5DEG  
 Test Speed: HIGH  
 Temperature:25.3℃  
 Operators:linye  
 Test Date:2026-03-05

γ Range: 0 - 180DEG  
 γ Interval: 0.5DEG  
 Test System:EVERFINE GO-R5000\_V2 SYSTEM V2.00.459  
 Humidity:58.9%  
 Test Distance:26.000m [K=1.0000]  
 Remarks: