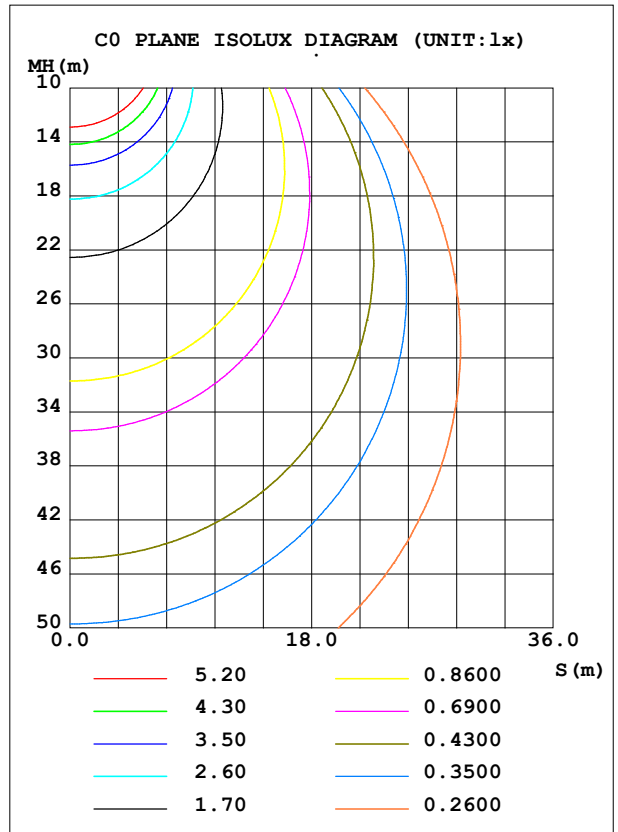
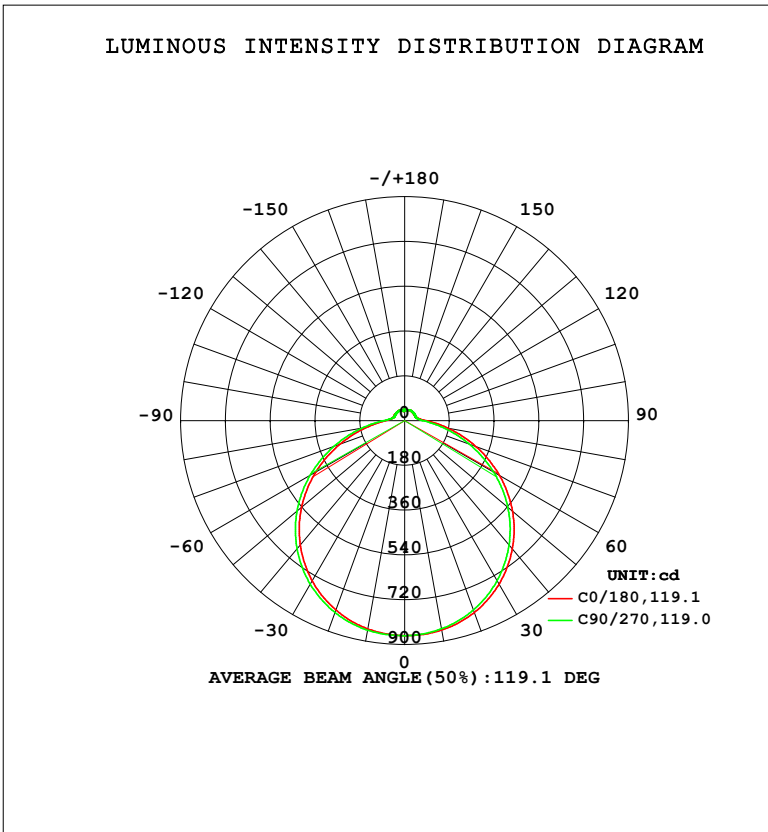


LUMINAIRE PHOTOMETRIC TEST REPORT

Test:U:119.88V I:0.3113A P:33.939W PF:0.9094 Freq:60.00Hz Lamp Flux:3070.61x1 lm		
NAME: 19寸北美吸顶灯	TYPE: 吸顶灯	WEIGHT: 1
SPEC.: /	DIM.: d=0.48	SERIAL No.: SY2500238-4#2700K
MFR.: 研发中心	SUR.: d=0.48	Shielding Angle: /

DATA OF LAMP		PHOTOMETRIC DATA				Eff: 90.47 lm/W
MODEL	2700K	I <sub>max</sub> (cd)	864.1	S/MH (C0/180)	1.28	
NOMINAL POWER (W)	/	LOR (%)	100.0	S/MH (C90/270)	1.31	
RATED VOLTAGE (V)	120	TOTAL FLUX (lm)	3070.6	η UP, DN (C0-180)	5.1, 44.4	
NOMINAL FLUX (lm)	3070.61	CIE CLASS	SEMI-D.	η UP, DN (C180-360)	5.2, 45.4	
LAMPS INSIDE	1	η up (%)	10.2	CIBSE SHR NOM	1.50	
TEST VOLTAGE (V)	/	η down (%)	89.8	CIBSE SHR MAX	1.50	



C Range: 0 - 360DEG  
 C Interval: 22.5DEG  
 Test Speed: HIGH  
 Temperature: 25.3°C  
 Operators: linye  
 Test Date: 2026-03-06

γ Range: 0 - 180DEG  
 γ Interval: 0.5DEG  
 Test System: EVERFINE GO-R5000\_V2 SYSTEM V2.00.459  
 Humidity: 58.9%  
 Test Distance: 26.000m [K=1.0000]  
 Remarks:

ZONAL FLUX DIAGRAM

ZONAL FLUX DIAGRAM:

γ	C0	C45	C90	C135	C180	C225	C270	C315	γ	Φ zone	Φ total	%lum, lamp
5	862.2	861.6	860.3	859.4	860.1	861.6	862.4	862.4	0- 5	20.63	20.63	0.67,0.67
10	854.9	852.1	849.9	848.7	850.4	852.6	855.3	855.9	5- 10	61.31	81.93	2.67,2.67
15	840.9	836.6	832.9	831.2	833.6	837.4	841.1	842.8	10- 15	100.2	182.2	5.93,5.93
20	820.2	814.9	809.6	806.9	809.6	814.5	820.2	822.4	15- 20	136.1	318.3	10.4,10.4
25	792.9	786.4	779.5	776.7	780.0	786.4	792.6	795.6	20- 25	167.9	486.2	15.8,15.8
30	759.6	751.3	743.0	739.5	743.5	750.6	759.1	762.6	25- 30	194.6	680.8	22.2,22.2
35	719.1	710.2	700.8	696.8	701.1	710.0	719.4	723.1	30- 35	215.2	896.0	29.2,29.2
40	673.6	663.6	653.1	648.1	652.6	662.7	672.9	677.6	35- 40	229.1	1125	36.6,36.6
45	622.2	611.1	599.7	594.3	598.8	610.1	621.7	626.5	40- 45	235.8	1361	44.3,44.3
50	566.2	554.4	541.6	535.6	540.9	552.6	565.0	570.6	45- 50	235.2	1596	52,52
55	505.2	492.7	479.1	472.4	478.0	490.2	503.8	510.1	50- 55	227.2	1823	59.4,59.4
60	440.1	427.0	412.6	405.6	411.8	424.2	438.6	445.5	55- 60	212.0	2035	66.3,66.3
65	372.5	359.2	344.3	337.4	343.7	356.2	370.5	378.1	60- 65	190.3	2226	72.5,72.5
70	304.8	291.9	277.0	270.0	276.7	288.4	302.5	310.6	65- 70	163.9	2389	77.8,77.8
75	239.3	226.7	212.1	206.2	212.1	223.3	236.3	244.1	70- 75	134.4	2524	82.2,82.2
80	178.1	166.6	153.6	148.9	153.6	163.0	174.5	181.4	75- 80	104.0	2628	85.6,85.6
85	125.3	115.5	105.6	102.9	107.2	113.6	121.9	127.7	80- 85	75.47	2703	88,88
90	86.55	80.47	74.97	74.43	77.98	81.10	84.39	87.76	85- 90	52.81	2756	89.8,89.8
95	65.45	62.07	59.70	60.59	62.57	63.86	64.84	66.33	90- 95	38.92	2795	91,91
100	54.69	52.62	51.72	53.00	54.01	54.46	54.63	55.07	95-100	31.55	2827	92.1,92.1
105	48.86	47.60	47.65	49.03	49.44	49.26	48.88	49.02	100-105	27.27	2854	92.9,92.9
110	46.12	45.55	46.21	47.45	47.59	47.26	46.59	46.34	105-110	24.80	2879	93.8,93.8
115	45.49	45.16	46.11	47.21	47.78	47.26	46.54	46.16	110-115	23.53	2902	94.5,94.5
120	45.49	45.16	46.35	47.25	47.83	47.35	46.54	46.44	115-120	22.59	2925	95.3,95.3
125	45.68	45.73	46.78	47.30	47.78	47.35	46.54	46.39	120-125	21.54	2946	96,96
130	45.82	46.02	47.07	47.40	47.40	47.26	46.54	46.39	125-130	20.32	2967	96.6,96.6
135	45.97	46.02	47.11	47.40	47.30	46.97	46.54	46.39	130-135	18.89	2986	97.2,97.2
140	46.30	46.40	47.11	47.40	47.30	46.97	46.54	46.49	135-140	17.32	3003	97.8,97.8
145	46.40	46.50	47.07	47.35	47.30	47.11	46.68	46.58	140-145	15.62	3019	98.3,98.3
150	46.97	46.69	47.16	47.35	47.45	47.45	47.11	47.40	145-150	13.84	3032	98.8,98.8
155	47.30	47.26	47.40	47.40	47.45	47.88	47.11	47.40	150-155	11.98	3044	99.1,99.1
160	46.07	45.82	45.54	45.73	45.19	45.73	46.09	46.34	155-160	9.871	3054	99.5,99.5
165	43.88	43.26	43.11	42.97	42.38	42.59	43.39	43.82	160-165	7.360	3062	99.7,99.7
170	39.44	39.62	39.70	39.05	38.57	38.57	39.00	38.71	165-170	4.903	3066	99.9,99.9
175	45.39	45.16	45.11	45.53	45.59	45.59	45.49	45.54	170-175	3.029	3070	100,100
180	45.82	45.59	45.39	45.58	45.68	45.59	45.20	45.58	175-180	1.088	3071	100,100
DEG	LUMINOUS INTENSITY:cd								UNIT:lm			

Conical surface Flux(90deg): 1360.9 lm

%lum = 44.3%  
%lamp = 44.3%

Conical surface Flux(120deg): 2035.2 lm

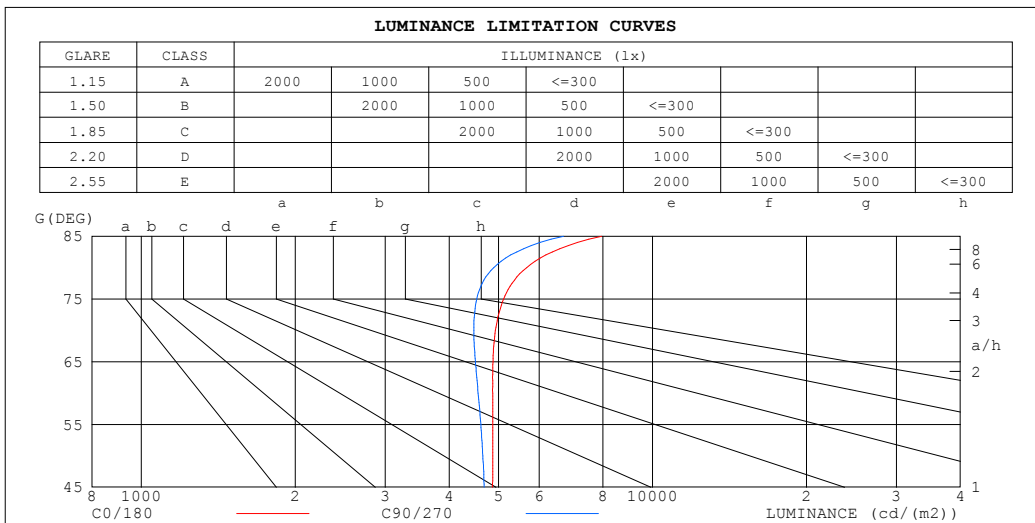
%lum = 66.3%  
%lamp = 66.3%

C Range: 0 - 360DEG  
C Interval: 22.5DEG  
Test Speed: HIGH  
Temperature:25.3°C  
Operators:linye  
Test Date:2026-03-06

γ Range: 0 - 180DEG  
γ Interval: 0.5DEG  
Test System:EVERFINE GO-R5000\_V2 SYSTEM V2.00.459  
Humidity:58.9%  
Test Distance:26.000m [K=1.0000]  
Remarks:

**LUMINANCE LIMITATION CURVES**

Test:U:119.88V I:0.3113A P:33.939W PF:0.9094 Freq:60.00Hz Lamp Flux:3070.61x1 lm		
NAME: 19寸北美吸顶灯	TYPE: 吸顶灯	WEIGHT: 1
SPEC.: /	DIM.: d=0.48	SERIAL No.: SY2500238-4#2700K
MFR.: 研发中心	SUR.: d=0.48	Shielding Angle: /



LUMINANCE cd/(m2)		
G (DEG)	C0/180	C90/270
85	7951	6697
80	5670	4887
75	5112	4528
70	4926	4474
65	4873	4502
60	4866	4560
55	4870	4615
50	4870	4656
45	4865	4686

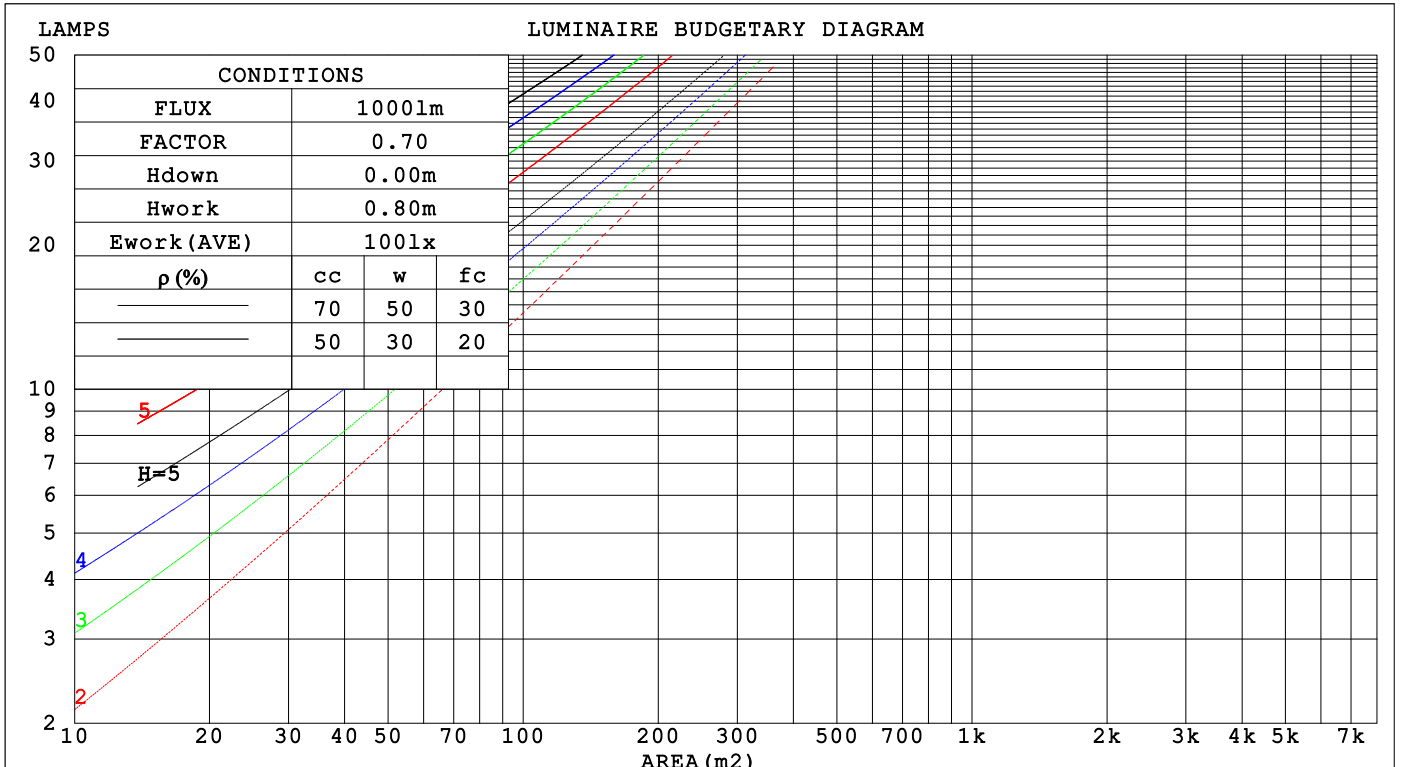
C Range: 0 - 360DEG  
 C Interval: 22.5DEG  
 Test Speed: HIGH  
 Temperature:25.3°C  
 Operators:linye  
 Test Date:2026-03-06

γ Range: 0 - 180DEG  
 γ Interval: 0.5DEG  
 Test System:EVERFINE GO-R5000\_V2 SYSTEM V2.00.459  
 Humidity:58.9%  
 Test Distance:26.000m [K=1.0000]  
 Remarks:

CU AND LUMINAIRE BUDGETARY ESTIMATE DIAGRAM

Test:U:119.88V I:0.3113A P:33.939W PF:0.9094 Freq:60.00Hz Lamp Flux:3070.61x1 lm		
NAME: 19寸北美吸顶灯	TYPE: 吸顶灯	WEIGHT: 1
SPEC.: /	DIM.: d=0.48	SERIAL No.: SY2500238-4#2700K
MFR.: 研发中心	SUR.: d=0.48	Shielding Angle: /

pcc	80%			70%			50%			30%			10%			0
	50%	30%	10%	50%	30%	10%	50%	30%	10%	50%	30%	10%	50%	30%	10%	0
pw	0															
pfc	0															
RCR	RCR:Room Cavity Ratio      Coefficients of Utilization(CU)															
0.0	1.17	1.17	1.17	1.13	1.13	1.13	1.05	1.05	1.05	.99	.99	.99	.93	.93	.93	.90
1.0	.00	.95	.91	.97	.92	.88	.90	.87	.84	.85	.82	.79	.79	.77	.75	.72
2.0	.86	.79	.73	.84	.77	.71	.78	.73	.68	.73	.69	.65	.69	.65	.62	.59
3.0	.75	.67	.60	.73	.65	.59	.69	.62	.57	.64	.59	.54	.61	.56	.52	.49
4.0	.67	.57	.51	.64	.56	.50	.61	.53	.48	.57	.51	.46	.54	.49	.44	.42
5.0	.59	.50	.43	.57	.49	.43	.54	.47	.41	.51	.45	.40	.48	.43	.38	.36
6.0	.53	.44	.38	.52	.43	.37	.49	.41	.36	.46	.40	.35	.44	.38	.34	.31
7.0	.48	.39	.33	.47	.38	.32	.44	.37	.32	.42	.35	.31	.40	.34	.30	.28
8.0	.44	.35	.29	.43	.34	.29	.40	.33	.28	.38	.32	.27	.36	.31	.27	.24
9.0	.40	.32	.26	.39	.31	.26	.37	.30	.25	.35	.29	.25	.34	.28	.24	.22
10.0	.37	.29	.24	.36	.28	.23	.34	.27	.23	.33	.27	.22	.31	.26	.22	.20



C Range: 0 - 360DEG  
 C Interval: 22.5DEG  
 Test Speed: HIGH  
 Temperature:25.3°C  
 Operators:linye  
 Test Date:2026-03-06

γ Range: 0 - 180DEG  
 γ Interval: 0.5DEG  
 Test System:EVERFINE GO-R5000\_V2 SYSTEM V2.00.459  
 Humidity:58.9%  
 Test Distance:26.000m [K=1.0000]  
 Remarks:

WEC AND CCEC

Test:U:119.88V I:0.3113A P:33.939W PF:0.9094 Freq:60.00Hz Lamp Flux:3070.61x1 lm		
NAME: 19寸北美吸顶灯	TYPE: 吸顶灯	WEIGHT: 1
SPEC.: /	DIM.: d=0.48	SERIAL No.: SY2500238-4#2700K
MFR.: 研发中心	SUR.: d=0.48	Shielding Angle: /

$\rho_{CC}$	80%			70%			50%			30%			10%			0
$\rho_w$	50%	30%	10%	50%	30%	10%	50%	30%	10%	50%	30%	10%	50%	30%	10%	0
$\rho_{fc}$	20%			20%			20%			20%			20%			0
RCR	RCR:Room Cavity Ratio						Wall Exitance Coefficients(WEC)									
0.0																
1.0	.340	.193	.061	.329	.188	.060	.310	.178	.057	.293	.169	.054	.276	.160	.052	
2.0	.307	.169	.052	.298	.164	.051	.281	.156	.049	.265	.149	.047	.251	.142	.045	
3.0	.279	.149	.045	.271	.145	.044	.256	.139	.042	.241	.132	.041	.228	.126	.039	
4.0	.255	.133	.039	.248	.130	.038	.234	.124	.037	.221	.119	.036	.209	.114	.035	
5.0	.234	.119	.035	.228	.117	.034	.215	.112	.033	.203	.107	.032	.192	.103	.031	
6.0	.216	.108	.031	.210	.106	.031	.199	.102	.030	.188	.098	.029	.178	.094	.028	
7.0	.200	.099	.028	.195	.097	.028	.185	.093	.027	.175	.090	.026	.166	.086	.025	
8.0	.187	.091	.026	.182	.089	.025	.172	.086	.025	.163	.083	.024	.155	.080	.023	
9.0	.175	.084	.024	.170	.083	.023	.161	.080	.023	.153	.077	.022	.146	.074	.021	
10.0	.164	.079	.022	.160	.077	.022	.152	.074	.021	.144	.072	.020	.137	.069	.020	

$\rho_{CC}$	80%			70%			50%			30%			10%			0
$\rho_w$	50%	30%	10%	50%	30%	10%	50%	30%	10%	50%	30%	10%	50%	30%	10%	0
$\rho_{fc}$	20%			20%			20%			20%			20%			0
RCR	RCR:Room Cavity Ratio						Ceiling Cavity Exitance Coefficients(CCEC)									
0.0	.268	.268	.268	.229	.229	.229	.157	.157	.157	.090	.090	.090	.029	.029	.029	
1.0	.261	.235	.211	.223	.201	.181	.153	.138	.125	.088	.080	.073	.028	.026	.024	
2.0	.254	.211	.175	.217	.182	.152	.149	.126	.106	.086	.073	.062	.028	.024	.020	
3.0	.246	.194	.153	.211	.167	.132	.145	.116	.093	.084	.068	.055	.027	.022	.018	
4.0	.238	.181	.137	.204	.156	.119	.141	.109	.084	.081	.064	.050	.026	.021	.016	
5.0	.231	.171	.127	.198	.148	.110	.137	.103	.078	.079	.061	.046	.025	.020	.015	
6.0	.224	.163	.119	.192	.141	.104	.133	.099	.073	.077	.058	.044	.025	.019	.014	
7.0	.217	.156	.114	.186	.135	.099	.129	.095	.070	.075	.056	.042	.024	.018	.014	
8.0	.210	.150	.109	.181	.131	.095	.125	.092	.068	.073	.054	.040	.024	.018	.013	
9.0	.204	.146	.106	.176	.126	.093	.122	.089	.066	.071	.052	.039	.023	.017	.013	
10.0	.198	.141	.104	.171	.123	.090	.119	.086	.064	.069	.051	.038	.022	.017	.013	

C Range: 0 - 360DEG  
 C Interval: 22.5DEG  
 Test Speed: HIGH  
 Temperature:25.3°C  
 Operators:linye  
 Test Date:2026-03-06

$\gamma$  Range: 0 - 180DEG  
 $\gamma$  Interval: 0.5DEG  
 Test System:EVERFINE GO-R5000\_V2 SYSTEM V2.00.459  
 Humidity:58.9%  
 Test Distance:26.000m [K=1.0000]  
 Remarks:

UGR(Unified Glare Rating) Table

Test:U:119.88V I:0.3113A P:33.939W PF:0.9094 Freq:60.00Hz Lamp Flux:3070.61x1 lm		
NAME: 19寸北美吸顶灯	TYPE: 吸顶灯	WEIGHT: 1
SPEC.: /	DIM.: d=0.48	SERIAL No.: SY2500238-4#2700K
MFR.: 研发中心	SUR.: d=0.48	Shielding Angle: /

ceiling/cavity	0.7	0.7	0.5	0.5	0.3	0.7	0.7	0.5	0.5	0.3
walls	0.5	0.3	0.5	0.3	0.3	0.5	0.3	0.5	0.3	0.3
working plane	0.2	0.2	0.2	0.2	0.2	0.2	0.2	0.2	0.2	0.2

Room dimensions	Viewed crosswise					Viewed endwise				
x = 2H y = 2H	17.8	19.2	18.2	19.6	20.0	17.6	19.0	18.0	19.4	19.8
3H	19.6	20.9	20.0	21.3	21.8	19.3	20.6	19.7	21.0	21.4
4H	20.4	21.7	20.9	22.1	22.6	20.0	21.3	20.5	21.7	22.2
6H	21.2	22.4	21.7	22.9	23.3	20.7	21.9	21.2	22.3	22.8
8H	21.6	22.7	22.1	23.2	23.7	21.0	22.2	21.5	22.6	23.1
12H	22.0	23.1	22.5	23.6	24.1	21.4	22.5	21.9	22.9	23.5
4H 2H	18.4	19.7	18.9	20.1	20.6	18.2	19.5	18.7	19.9	20.4
3H	20.4	21.5	20.9	22.0	22.5	20.1	21.2	20.6	21.7	22.2
4H	21.4	22.4	21.9	22.9	23.4	21.0	22.0	21.6	22.5	23.1
6H	22.4	23.2	22.9	23.8	24.4	21.9	22.8	22.4	23.3	23.9
8H	22.8	23.7	23.4	24.2	24.8	22.3	23.1	22.9	23.7	24.3
12H	23.3	24.1	23.9	24.6	25.3	22.7	23.5	23.3	24.0	24.7
8H 4H	21.7	22.6	22.3	23.1	23.7	21.4	22.2	22.0	22.8	23.4
6H	22.9	23.6	23.5	24.2	24.8	22.5	23.2	23.1	23.8	24.4
8H	23.5	24.1	24.1	24.7	25.4	23.0	23.7	23.7	24.3	24.9
12H	24.2	24.7	24.8	25.4	26.0	23.6	24.2	24.3	24.8	25.5
12H 4H	21.8	22.5	22.3	23.1	23.7	21.5	22.2	22.0	22.8	23.4
6H	23.0	23.6	23.6	24.2	24.9	22.6	23.2	23.2	23.8	24.5
8H	23.7	24.3	24.3	24.9	25.6	23.3	23.8	23.9	24.4	25.1

Variations with the observer position at spacings(CIE Pub.117):		
S = 1.0H	+ 0.1 / - 0.1	+ 0.1 / - 0.2
1.5H	+ 0.2 / - 0.3	+ 0.2 / - 0.3
2.0H	+ 0.1 / - 0.3	+ 0.1 / - 0.4

CIE Pub.117, 3071 lm Total Lamp Luminous Flux Corrected (8log(F/F0) = 3.9)  
Area: 0.180956 m2

C Range: 0 - 360DEG  
C Interval: 22.5DEG  
Test Speed: HIGH  
Temperature:25.3℃  
Operators:linye  
Test Date:2026-03-06

γ Range: 0 - 180DEG  
γ Interval: 0.5DEG  
Test System:EVERFINE GO-R5000\_V2 SYSTEM V2.00.459  
Humidity:58.9%  
Test Distance:26.000m [K=1.0000]  
Remarks:

**UTILIZATION FACTORS TABLE**

Test:U:119.88V I:0.3113A P:33.939W PF:0.9094 Freq:60.00Hz Lamp Flux:3070.61x1 lm		
NAME: 19寸北美吸顶灯	TYPE: 吸顶灯	WEIGHT: 1
SPEC.: /	DIM.: d=0.48	SERIAL No.: SY2500238-4#2700K
MFR.: 研发中心	SUR.: d=0.48	Shielding Angle: /

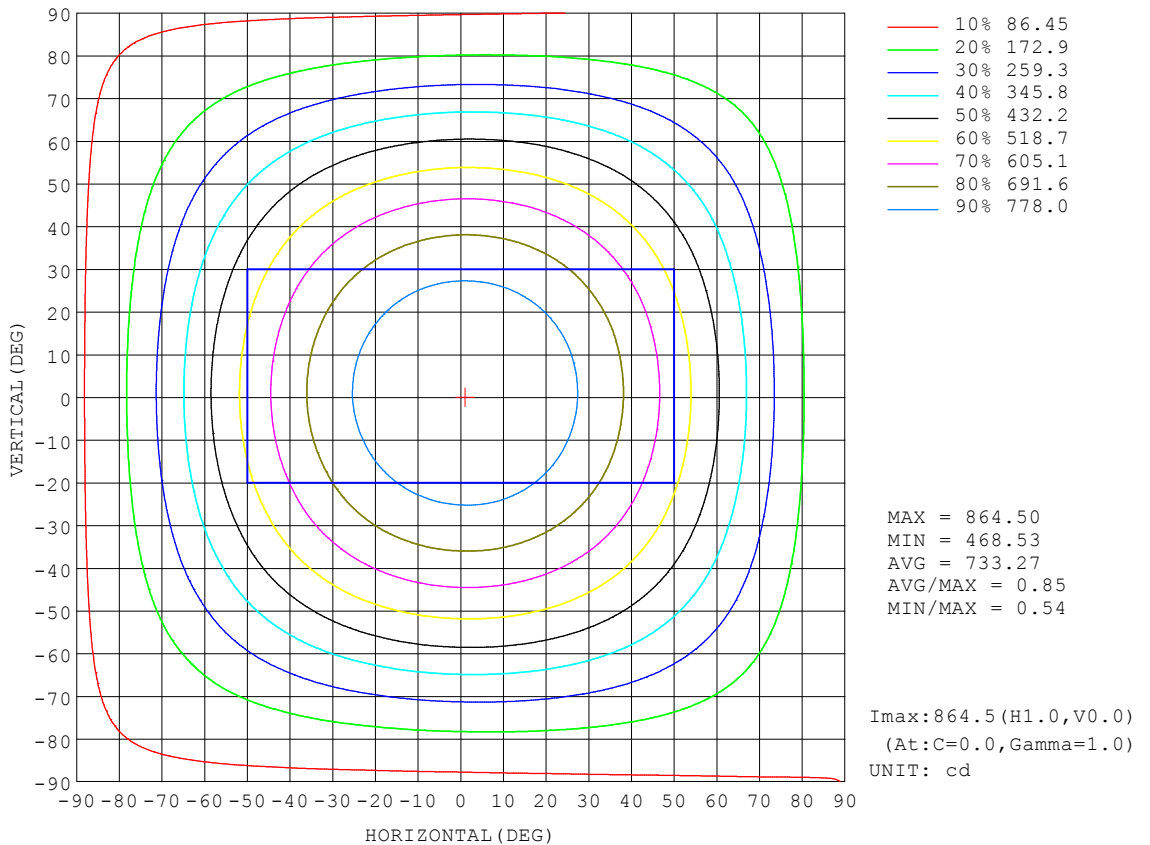
REFLECTANCE										
Ceiling	0.8	0.8	0.8	0.7	0.7	0.7	0.5	0.5	0.5	0
Walls	0.7	0.5	0.3	0.7	0.5	0.3	0.7	0.5	0.3	0
Working plane	0.2	0.2	0.2	0.2	0.2	0.2	0.2	0.2	0.2	0
ROOM INDEX	UTILIZATION FACTORS (PERCENT) $k(RI) \times RCR = 5$									
k = 0.60	53	41	34	52	40	33	50	40	33	26
0.80	62	50	42	61	49	42	58	48	41	34
1.00	70	59	51	69	58	50	66	58	49	41
1.25	77	66	58	75	65	58	72	63	56	48
1.50	83	72	64	80	70	63	76	68	61	52
2.00	90	80	73	87	78	72	82	75	69	59
2.50	94	85	78	91	83	77	86	79	74	63
3.00	97	89	83	94	87	81	89	83	78	67
4.00	102	95	89	98	92	87	92	88	83	71
5.00	104	99	94	101	96	91	95	91	87	74
ROOM INDEX	UF(total)									Direct
According to DIN EN 13032-2 2004			Suspended				SHRNOM = 1.25			

C Range: 0 - 360DEG  
 C Interval: 22.5DEG  
 Test Speed: HIGH  
 Temperature:25.3°C  
 Operators:linye  
 Test Date:2026-03-06

$\gamma$  Range: 0 - 180DEG  
 $\gamma$  Interval: 0.5DEG  
 Test System:EVERFINE GO-R5000\_V2 SYSTEM V2.00.459  
 Humidity:58.9%  
 Test Distance:26.000m [K=1.0000]  
 Remarks:

**ISOCANDELA DIAGRAM**

Test:U:119.88V I:0.3113A P:33.939W PF:0.9094 Freq:60.00Hz Lamp Flux:3070.61x1 lm		
NAME: 19寸北美吸顶灯	TYPE: 吸顶灯	WEIGHT: 1
SPEC.: /	DIM.: d=0.48	SERIAL No.: SY2500238-4#2700K
MFR.: 研发中心	SUR.: d=0.48	Shielding Angle: /

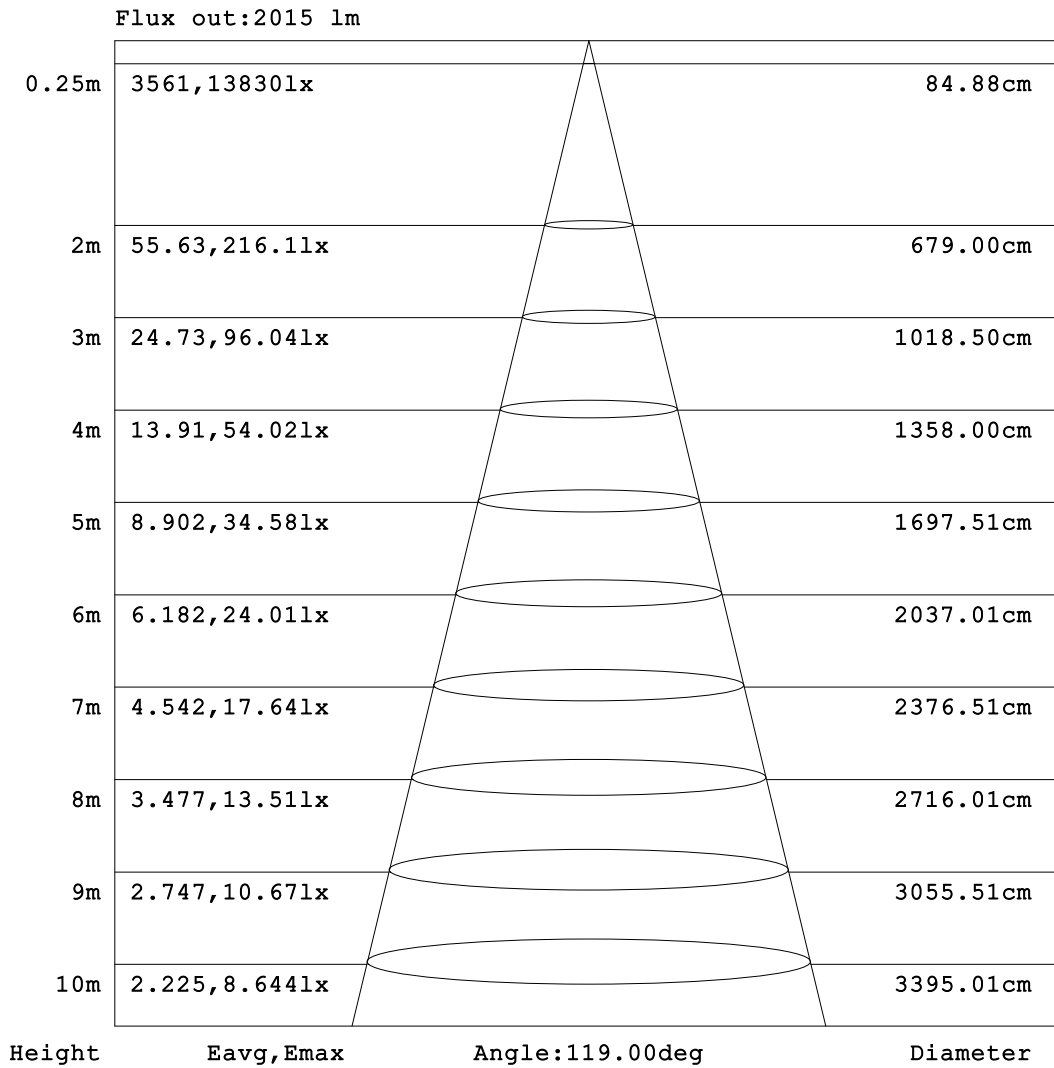


C Range: 0 - 360DEG  
 C Interval: 22.5DEG  
 Test Speed: HIGH  
 Temperature:25.3°C  
 Operators:linye  
 Test Date:2026-03-06

γ Range: 0 - 180DEG  
 γ Interval: 0.5DEG  
 Test System:EVERFINE GO-R5000\_V2 SYSTEM V2.00.459  
 Humidity:58.9%  
 Test Distance:26.000m [K=1.0000]  
 Remarks:

**AAI Figure**

Test:U:119.88V I:0.3113A P:33.939W PF:0.9094 Freq:60.00Hz Lamp Flux:3070.61x1 lm		
NAME: 19寸北美吸顶灯	TYPE: 吸顶灯	WEIGHT: 1
SPEC.: /	DIM.: d=0.48	SERIAL No.: SY2500238-4#2700K
MFR.: 研发中心	SUR.: d=0.48	Shielding Angle: /



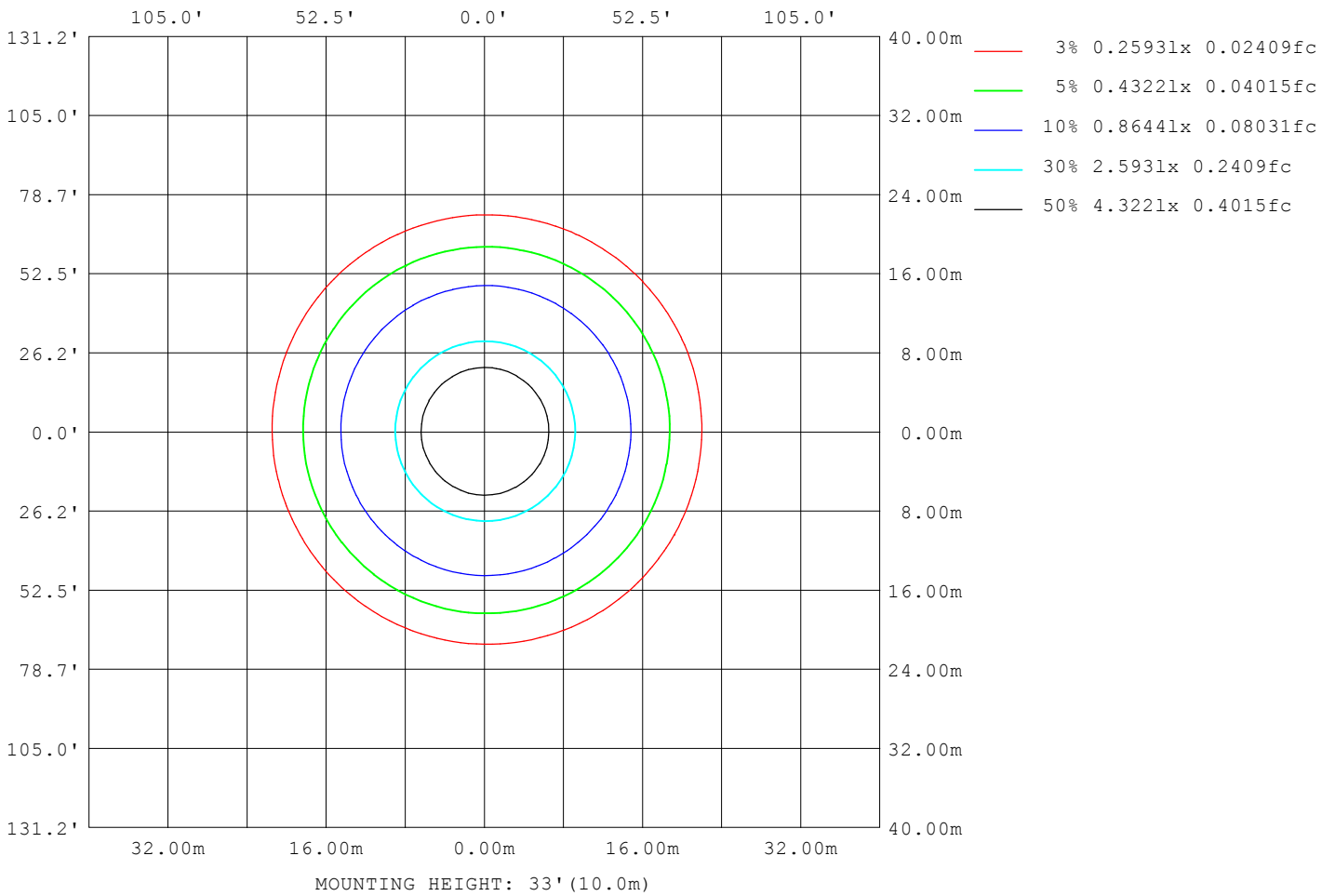
Note:The Curves indicate the illuminated area and the average illumination when the luminaire is at different distance.

C Range: 0 - 360DEG  
C Interval: 22.5DEG  
Test Speed: HIGH  
Temperature:25.3°C  
Operators:linye  
Test Date:2026-03-06

γ Range: 0 - 180DEG  
γ Interval: 0.5DEG  
Test System:EVERFINE GO-R5000\_V2 SYSTEM V2.00.459  
Humidity:58.9%  
Test Distance:26.000m [K=1.0000]  
Remarks:

**ISOLUX DIAGRAM**

Test:U:119.88V I:0.3113A P:33.939W PF:0.9094 Freq:60.00Hz Lamp Flux:3070.61x1 lm		
NAME: 19寸北美吸顶灯	TYPE: 吸顶灯	WEIGHT: 1
SPEC.: /	DIM.: d=0.48	SERIAL No.: SY2500238-4#2700K
MFR.: 研发中心	SUR.: d=0.48	Shielding Angle: /



C Range: 0 - 360DEG  
 C Interval: 22.5DEG  
 Test Speed: HIGH  
 Temperature:25.3°C  
 Operators:linye  
 Test Date:2026-03-06

γ Range: 0 - 180DEG  
 γ Interval: 0.5DEG  
 Test System:EVERFINE GO-R5000\_V2 SYSTEM V2.00.459  
 Humidity:58.9%  
 Test Distance:26.000m [K=1.0000]  
 Remarks:

**LED Avg.L Report**

Test:U:119.88V I:0.3113A P:33.939W PF:0.9094 Freq:60.00Hz Lamp Flux:3070.61x1 lm		
NAME: 19寸北美吸顶灯	TYPE: 吸顶灯	WEIGHT: 1
SPEC.: /	DIM.: d=0.48	SERIAL No.: SY2500238-4#2700K
MFR.: 研发中心	SUR.: d=0.48	Shielding Angle: /

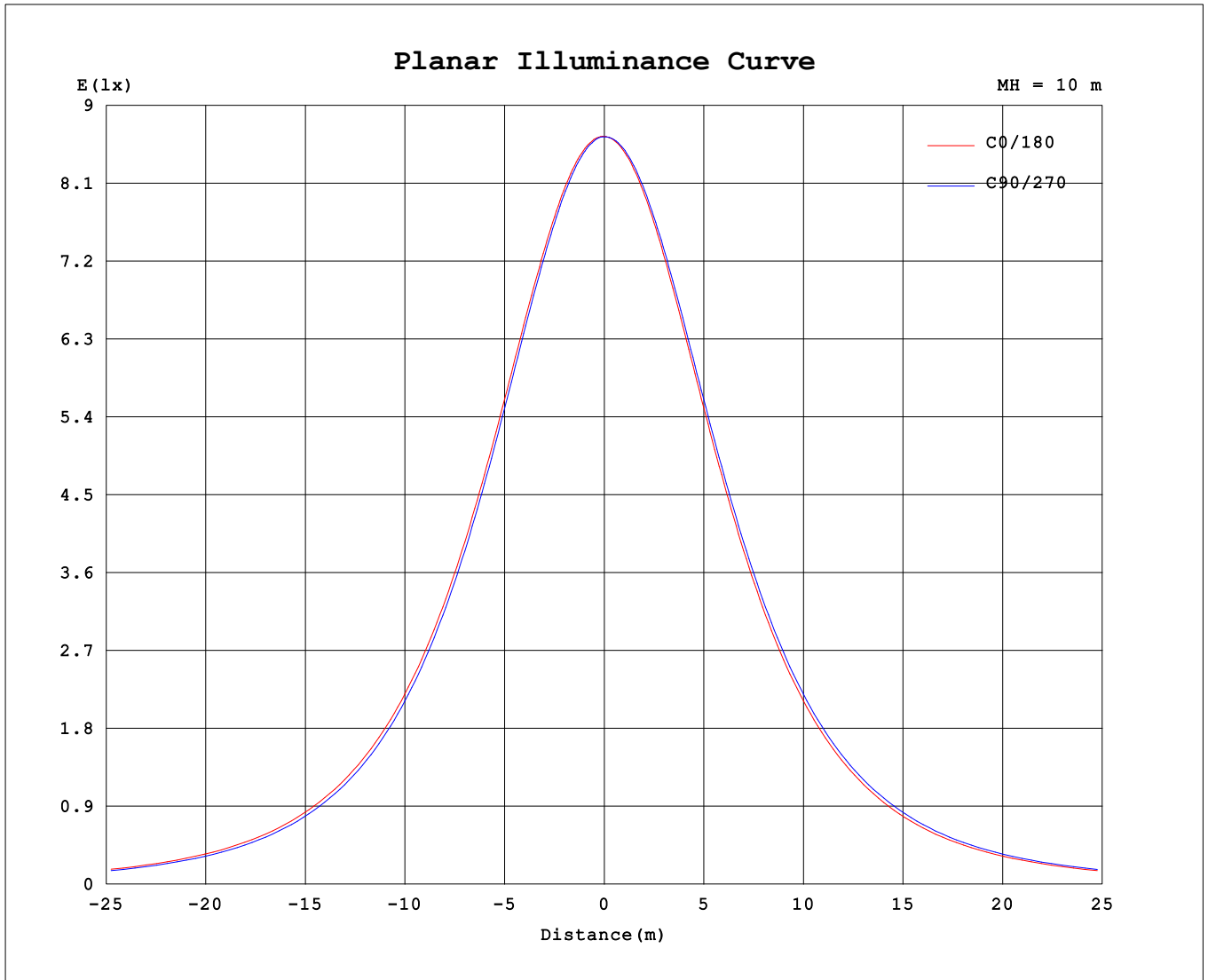
AvgL	cd/m2
L_0~180 (65) av	4682
L_0~180 (75) av	4819
L_0~180 (85) av	7372
L_90~270 (65) av	4674
L_90~270 (75) av	4787
L_90~270 (85) av	7215
L_45 (65) av	4678
L_45 (75) av	4805
L_45 (85) av	7287

Standard: GB/T 29293-2012

C Range: 0 - 360DEG  
C Interval: 22.5DEG  
Test Speed: HIGH  
Temperature:25.3℃  
Operators:linye  
Test Date:2026-03-06

γ Range: 0 - 180DEG  
γ Interval: 0.5DEG  
Test System:EVERFINE GO-R5000\_V2 SYSTEM V2.00.459  
Humidity:58.9%  
Test Distance:26.000m [K=1.0000]  
Remarks:

**Planar Illuminance Curve**



C Range: 0 - 360DEG  
 C Interval: 22.5DEG  
 Test Speed: HIGH  
 Temperature: 25.3°C  
 Operators: linye  
 Test Date: 2026-03-06

γ Range: 0 - 180DEG  
 γ Interval: 0.5DEG  
 Test System: EVERFINE GO-R5000\_V2 SYSTEM V2.00.459  
 Humidity: 58.9%  
 Test Distance: 26.000m [K=1.0000]  
 Remarks:

LUMINOUS DISTRIBUTION INTENSITY DATA

Test:U:119.88V I:0.3113A P:33.939W PF:0.9094 Freq:60.00Hz Lamp Flux:3070.6lx1 lm		
NAME: 19寸北美吸顶灯	TYPE: 吸顶灯	WEIGHT: 1
SPEC.: /	DIM.: d=0.48	SERIAL No.: SY2500238-4#2700K
MFR.: 研发中心	SUR.: d=0.48	Shielding Angle: /

Table--1

UNIT: cd

C (DEG) \ γ (DEG)	0	22.5	45	67.5	90	112.5	135	157.5	180	202.5	225	247.5	270	292.5	315	337.5			
0	864	864	864	864	864	864	864	864	864	864	864	864	864	864	864	864			
5	862	862	862	861	860	860	859	860	860	861	862	862	862	863	862	863			
10	855	854	852	851	850	849	849	849	850	852	853	854	855	856	856	856			
15	841	839	837	835	833	831	831	832	834	835	837	840	841	842	843	842			
20	820	818	815	812	810	808	807	808	810	812	815	818	820	822	822	822			
25	793	790	786	783	780	777	777	777	780	783	786	790	793	795	796	795			
30	760	756	751	747	743	741	740	740	743	747	751	756	759	762	763	762			
35	719	716	710	705	701	698	697	697	701	705	710	715	719	722	723	723			
40	674	669	664	658	653	649	648	649	653	657	663	668	673	676	678	677			
45	622	618	611	605	600	596	594	595	599	604	610	616	622	625	626	626			
50	566	561	554	548	542	537	536	536	541	546	553	559	565	569	571	571			
55	505	500	493	485	479	474	472	473	478	483	490	498	504	508	510	510			
60	440	435	427	419	413	408	406	406	412	417	424	432	439	443	446	445			
65	373	367	359	351	344	339	337	338	344	349	356	364	371	376	378	378			
70	305	299	292	284	277	272	270	271	277	282	288	296	303	308	311	310			
75	239	234	227	219	212	207	206	207	212	217	223	230	236	242	244	244			
80	178	173	167	160	154	150	149	150	154	158	163	169	174	179	181	182			
85	125	121	115	110	106	103	103	104	107	110	114	118	122	126	128	128			
90	86.5	83.9	80.5	77.3	75.0	73.9	74.4	75.7	78.0	79.5	81.1	82.7	84.4	86.4	87.8	88.1			
95	65.4	64.0	62.1	60.6	59.7	59.8	60.6	61.6	62.6	63.4	63.9	64.3	64.8	65.6	66.3	66.6			
100	54.7	53.7	52.6	51.9	51.7	52.1	53.0	53.8	54.0	54.3	54.5	54.4	54.6	54.7	55.1	55.2			
105	48.9	48.2	47.6	47.4	47.7	48.1	49.0	49.6	49.4	49.5	49.3	48.9	48.9	48.9	49.0	49.0			
110	46.1	45.7	45.5	45.6	46.2	46.7	47.4	48.0	47.6	47.3	47.3	46.8	46.6	46.3	46.3	45.9			
115	45.5	45.2	45.2	45.5	46.1	46.5	47.2	47.7	47.8	47.3	47.3	46.8	46.5	46.4	46.2	45.8			
120	45.5	45.2	45.2	45.8	46.3	46.5	47.3	47.7	47.8	47.3	47.4	46.8	46.5	46.3	46.4	46.1			
125	45.7	45.6	45.7	46.3	46.8	47.2	47.3	47.8	47.8	47.3	47.4	46.8	46.5	46.3	46.4	46.1			
130	45.8	45.7	46.0	46.5	47.1	47.2	47.4	47.8	47.4	47.3	47.3	46.8	46.5	46.3	46.4	46.2			
135	46.0	45.8	46.0	46.5	47.1	47.2	47.4	47.9	47.3	47.4	47.0	46.8	46.5	46.3	46.4	46.4			
140	46.3	46.2	46.4	46.5	47.1	47.1	47.4	47.5	47.3	47.2	47.0	46.8	46.5	46.4	46.5	46.5			
145	46.4	46.4	46.5	46.6	47.1	47.0	47.3	47.5	47.3	47.3	47.1	46.8	46.7	46.5	46.6	46.6			
150	47.0	46.8	46.7	47.2	47.2	47.2	47.3	47.5	47.4	47.5	47.4	47.3	47.1	47.2	47.4	47.2			
155	47.3	47.3	47.3	47.4	47.4	47.3	47.4	47.9	47.4	47.5	47.9	47.8	47.1	47.2	47.4	47.5			
160	46.1	46.0	45.8	45.5	45.5	45.6	45.7	46.0	45.2	45.3	45.7	46.1	46.1	46.2	46.3	46.3			
165	43.9	43.8	43.3	42.9	43.1	43.0	43.0	43.5	42.4	42.4	42.6	43.3	43.4	43.4	43.8	44.0			
170	39.4	39.5	39.6	39.6	39.7	38.9	39.0	39.1	38.6	38.6	38.6	38.6	39.0	38.9	38.7	38.8			
175	45.4	45.6	45.2	45.2	45.1	45.2	45.5	45.1	45.6	45.5	45.6	45.5	45.5	45.7	45.5	45.2			
180	45.8	45.6	45.6	45.2	45.4	45.5	45.6	45.4	45.7	45.8	45.6	45.5	45.2	45.3	45.6	45.6			

C Range: 0 - 360DEG  
 C Interval: 22.5DEG  
 Test Speed: HIGH  
 Temperature:25.3℃  
 Operators:linye  
 Test Date:2026-03-06

γ Range: 0 - 180DEG  
 γ Interval: 0.5DEG  
 Test System:EVERFINE GO-R5000\_V2 SYSTEM V2.00.459  
 Humidity:58.9%  
 Test Distance:26.000m [K=1.0000]  
 Remarks: