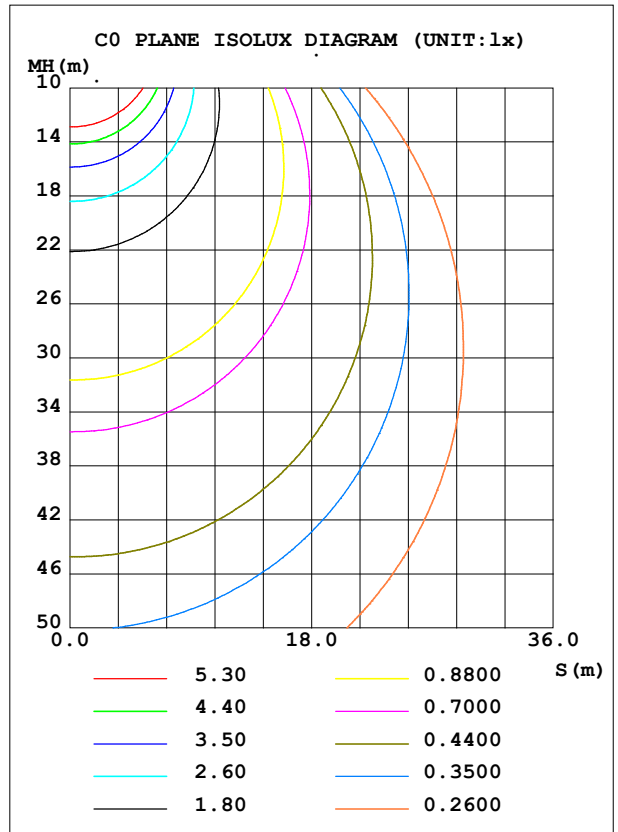
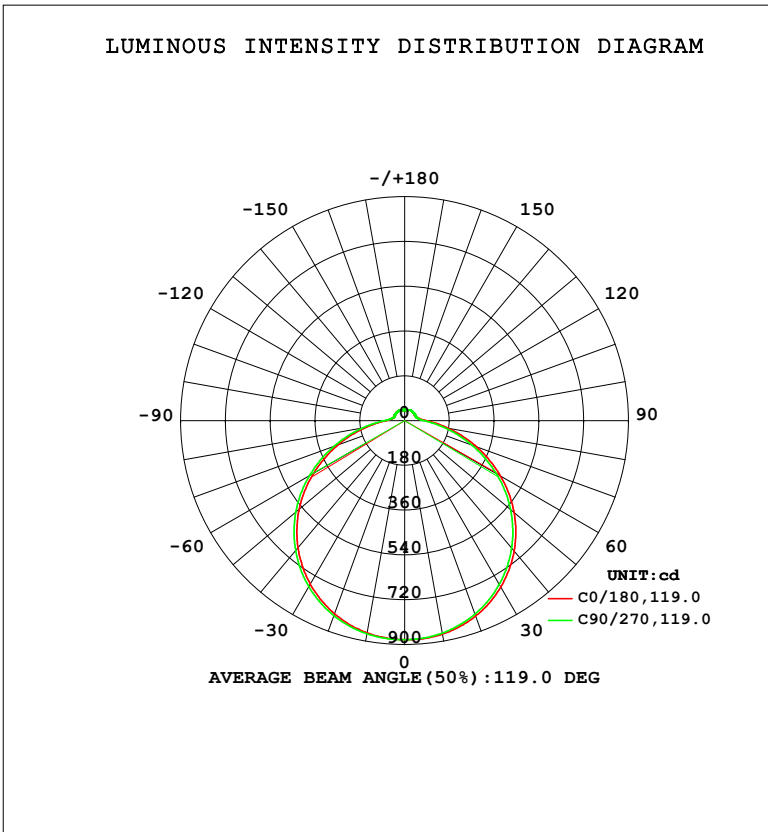


LUMINAIRE PHOTOMETRIC TEST REPORT

Test:U:119.90V I:0.3086A P:33.780W PF:0.9129 Freq:60.00Hz Lamp Flux:3125.02x1 lm		
NAME: 19寸北美吸顶灯	TYPE: 吸顶灯	WEIGHT: 1
SPEC.: /	DIM.: d=0.48	SERIAL No.: SY2500238-4#3000K
MFR.: 研发中心	SUR.: d=0.48	Shielding Angle: /

DATA OF LAMP		PHOTOMETRIC DATA				Eff: 92.51 lm/W
MODEL	3000K	I _{max} (cd)	880.7	S/MH (C0/180)	1.28	
NOMINAL POWER (W)	/	LOR (%)	100.0	S/MH (C90/270)	1.30	
RATED VOLTAGE (V)	120	TOTAL FLUX (lm)	3125.0	η UP, DN (C0-180)	5.1, 44.6	
NOMINAL FLUX (lm)	3125.02	CIE CLASS	SEMI-D.	η UP, DN (C180-360)	5.1, 45.2	
LAMPS INSIDE	1	η up (%)	10.2	CIBSE SHR NOM	1.50	
TEST VOLTAGE (V)	/	η down (%)	89.8	CIBSE SHR MAX	1.50	



C Range: 0 - 360DEG
 C Interval: 22.5DEG
 Test Speed: HIGH
 Temperature: 25.3°C
 Operators: linye
 Test Date: 2026-03-06

γ Range: 0 - 180DEG
 γ Interval: 0.5DEG
 Test System: EVERFINE GO-R5000_V2 SYSTEM V2.00.459
 Humidity: 58.9%
 Test Distance: 26.000m [K=1.0000]
 Remarks:

ZONAL FLUX DIAGRAM

ZONAL FLUX DIAGRAM:

γ	C0	C45	C90	C135	C180	C225	C270	C315	γ	Φ zone	Φ total	%lum, lamp
5	879.5	878.3	877.3	876.7	876.3	877.4	878.0	879.0	0- 5	21.02	21.02	0.67,0.67
10	871.5	869.6	867.1	865.9	866.3	868.6	870.7	871.3	5- 10	62.49	83.51	2.67,2.67
15	856.5	854.3	850.1	848.9	849.7	853.0	855.7	857.7	10- 15	102.2	185.7	5.94,5.94
20	835.4	831.3	827.4	824.9	825.8	829.8	833.6	836.0	15- 20	138.8	324.4	10.4,10.4
25	807.6	802.4	797.2	794.3	795.5	800.5	805.3	808.1	20- 25	171.2	495.6	15.9,15.9
30	772.7	766.7	760.4	757.3	758.8	764.7	770.3	773.9	25- 30	198.3	693.9	22.2,22.2
35	731.7	724.6	717.8	714.0	715.6	722.6	729.3	733.5	30- 35	219.3	913.2	29.2,29.2
40	684.9	677.5	669.3	664.9	666.7	674.6	681.7	686.2	35- 40	233.4	1147	36.7,36.7
45	632.0	623.8	615.1	610.5	612.5	621.4	629.0	633.7	40- 45	240.3	1387	44.4,44.4
50	574.2	565.4	556.3	551.3	553.4	562.6	571.4	575.9	45- 50	239.6	1627	52,52
55	511.8	502.4	492.8	487.4	490.3	499.6	508.7	514.0	50- 55	231.4	1858	59.5,59.5
60	445.0	435.3	425.4	419.8	422.8	432.4	441.8	447.2	55- 60	215.9	2074	66.4,66.4
65	375.7	366.1	355.7	350.3	353.1	362.8	372.3	378.1	60- 65	193.9	2268	72.6,72.6
70	307.0	297.6	287.2	281.7	284.6	293.4	302.6	309.1	65- 70	166.9	2435	77.9,77.9
75	240.3	231.1	221.1	215.9	218.3	226.5	235.4	241.7	70- 75	136.8	2571	82.3,82.3
80	178.1	169.7	160.8	156.6	158.0	164.9	172.7	178.4	75- 80	105.6	2677	85.7,85.7
85	125.4	118.2	111.0	108.0	109.5	114.2	119.7	124.9	80- 85	76.48	2754	88.1,88.1
90	87.53	83.10	78.74	77.04	77.85	79.88	82.73	86.36	85- 90	53.30	2807	89.8,89.8
95	66.98	64.67	62.35	61.55	61.61	62.28	63.72	66.17	90- 95	39.22	2846	91.1,91.1
100	56.13	54.83	53.78	53.32	52.91	53.05	53.83	55.32	95-100	31.78	2878	92.1,92.1
105	50.24	49.39	49.19	48.92	48.43	48.35	48.67	49.50	100-105	27.47	2905	93,93
110	47.34	47.02	47.48	47.27	46.96	46.74	47.01	47.03	105-110	25.01	2930	93.8,93.8
115	46.58	46.45	47.29	47.08	47.15	47.02	47.29	46.84	110-115	23.78	2954	94.5,94.5
120	46.53	46.45	47.30	47.08	47.77	47.54	47.63	46.98	115-120	22.87	2977	95.3,95.3
125	46.53	46.45	47.63	47.60	47.86	47.74	47.67	47.03	120-125	21.84	2999	96,96
130	46.53	46.88	47.67	47.69	47.86	47.83	47.67	47.12	125-130	20.61	3019	96.6,96.6
135	46.53	46.83	47.67	47.69	47.86	47.93	47.67	47.03	130-135	19.17	3039	97.2,97.2
140	46.62	46.74	47.77	47.69	47.86	48.07	47.67	47.12	135-140	17.57	3056	97.8,97.8
145	47.05	47.12	47.77	47.69	47.86	48.02	47.72	47.27	140-145	15.85	3072	98.3,98.3
150	47.81	47.64	47.91	48.21	48.19	48.16	48.05	48.07	145-150	14.07	3086	98.8,98.8
155	48.38	47.74	48.24	48.36	48.47	48.40	48.34	48.31	150-155	12.19	3098	99.1,99.1
160	46.03	45.45	45.92	46.98	46.48	47.18	47.64	47.19	155-160	10.03	3108	99.5,99.5
165	43.44	42.36	43.30	44.36	43.91	44.32	45.20	44.90	160-165	7.499	3116	99.7,99.7
170	38.55	38.79	39.84	40.34	40.40	40.66	41.17	40.20	165-170	5.003	3121	99.9,99.9
175	45.52	45.69	45.92	46.41	46.38	46.45	46.40	46.74	170-175	3.097	3124	100,100
180	46.24	46.22	46.16	46.70	46.34	46.22	46.11	46.46	175-180	1.107	3125	100,100
DEG	LUMINOUS INTENSITY:cd								UNIT:lm			

Conical surface Flux(90deg): 1386.9 lm

%lum = 44.4%
%lamp = 44.4%

Conical surface Flux(120deg): 2073.9 lm

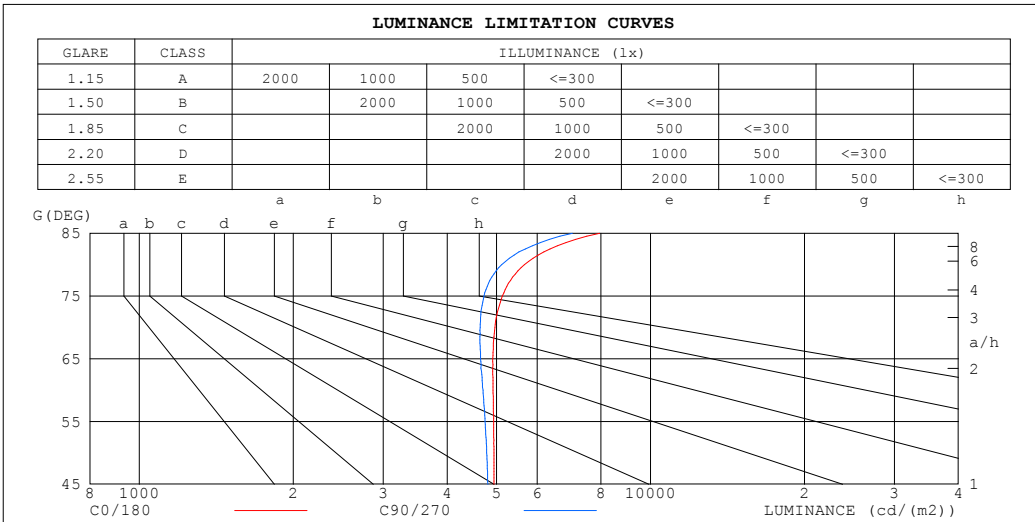
%lum = 66.4%
%lamp = 66.4%

C Range: 0 - 360DEG
C Interval: 22.5DEG
Test Speed: HIGH
Temperature:25.3°C
Operators:linye
Test Date:2026-03-06

γ Range: 0 - 180DEG
γ Interval: 0.5DEG
Test System:EVERFINE GO-R5000_V2 SYSTEM V2.00.459
Humidity:58.9%
Test Distance:26.000m [K=1.0000]
Remarks:

LUMINANCE LIMITATION CURVES

Test:U:119.90V I:0.3086A P:33.780W PF:0.9129 Freq:60.00Hz Lamp Flux:3125.02x1 lm		
NAME: 19寸北美吸顶灯	TYPE: 吸顶灯	WEIGHT: 1
SPEC.: /	DIM.: d=0.48	SERIAL No.: SY2500238-4#3000K
MFR.: 研发中心	SUR.: d=0.48	Shielding Angle: /



LUMINANCE cd/(m2)		
G (DEG)	C0/180	C90/270
85	7951	7037
80	5667	5117
75	5132	4721
70	4961	4640
65	4914	4651
60	4919	4700
55	4932	4747
50	4937	4782
45	4940	4807

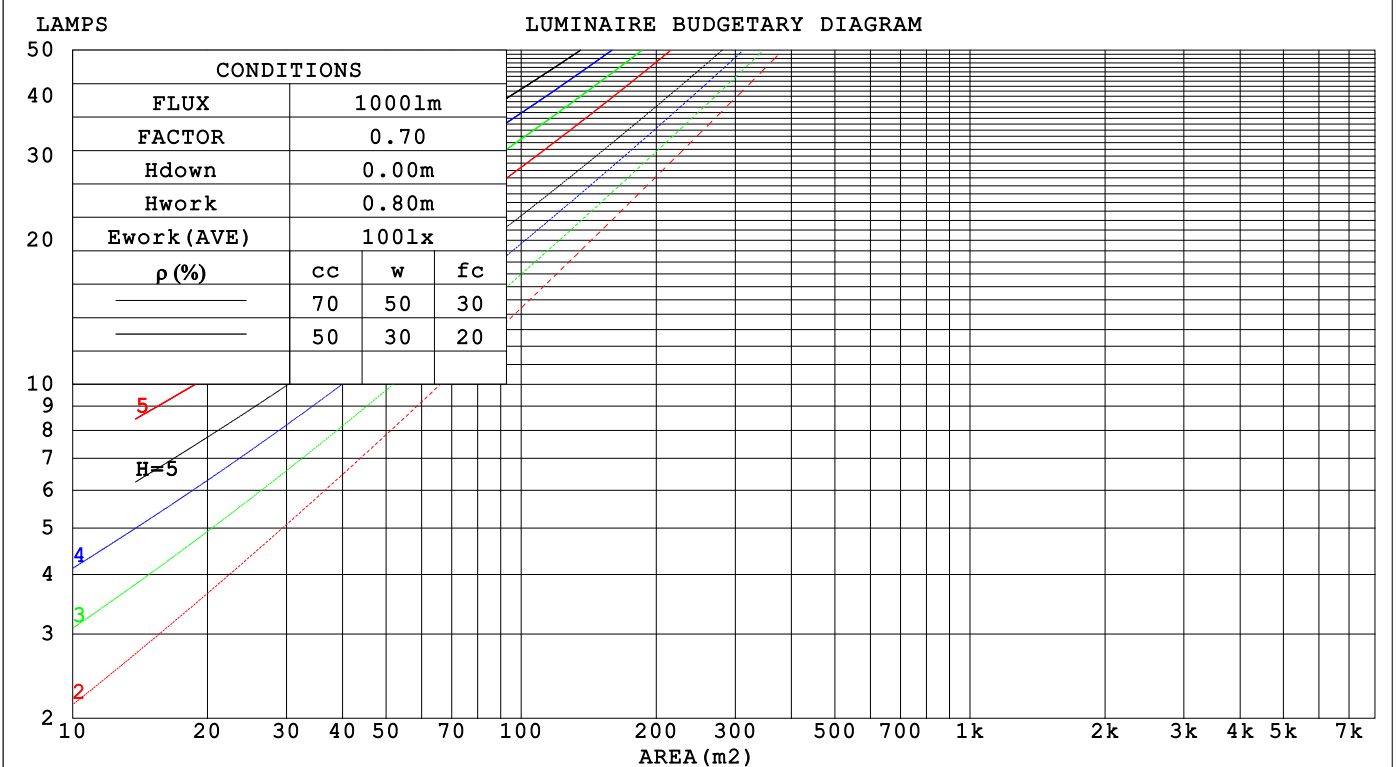
C Range: 0 - 360DEG
 C Interval: 22.5DEG
 Test Speed: HIGH
 Temperature:25.3°C
 Operators:linye
 Test Date:2026-03-06

γ Range: 0 - 180DEG
 γ Interval: 0.5DEG
 Test System:EVERFINE GO-R5000_V2 SYSTEM V2.00.459
 Humidity:58.9%
 Test Distance:26.000m [K=1.0000]
 Remarks:

CU AND LUMINAIRE BUDGETARY ESTIMATE DIAGRAM

Test:U:119.90V I:0.3086A P:33.780W PF:0.9129 Freq:60.00Hz Lamp Flux:3125.02x1 lm		
NAME: 19寸北美吸顶灯	TYPE: 吸顶灯	WEIGHT: 1
SPEC.: /	DIM.: d=0.48	SERIAL No.: SY2500238-4#3000K
MFR.: 研发中心	SUR.: d=0.48	Shielding Angle: /

pcc	80%			70%			50%			30%			10%			0
	pw	30%	10%	50%	30%	10%	50%	30%	10%	50%	30%	10%	50%	30%	10%	
pfc	20%			20%			20%			20%			20%			0
RCR	RCR:Room Cavity Ratio Coefficients of Utilization(CU)															
0.0	1.17	1.17	1.17	1.13	1.13	1.13	1.05	1.05	1.05	.99	.99	.99	.93	.93	.93	.90
1.0	.00	.95	.91	.97	.92	.88	.90	.87	.84	.85	.82	.79	.80	.77	.75	.72
2.0	.86	.79	.73	.84	.77	.71	.78	.73	.68	.74	.69	.65	.69	.65	.62	.59
3.0	.75	.67	.60	.73	.65	.59	.69	.62	.57	.64	.59	.54	.61	.56	.52	.49
4.0	.67	.57	.51	.65	.56	.50	.61	.54	.48	.57	.51	.46	.54	.49	.44	.42
5.0	.59	.50	.43	.57	.49	.43	.54	.47	.41	.51	.45	.40	.48	.43	.38	.36
6.0	.53	.44	.38	.52	.43	.37	.49	.41	.36	.46	.40	.35	.44	.38	.34	.31
7.0	.48	.39	.33	.47	.38	.32	.44	.37	.32	.42	.35	.31	.40	.34	.30	.28
8.0	.44	.35	.29	.43	.35	.29	.40	.33	.28	.38	.32	.27	.37	.31	.27	.24
9.0	.40	.32	.26	.39	.31	.26	.37	.30	.25	.35	.29	.25	.34	.28	.24	.22
10.0	.37	.29	.24	.36	.28	.23	.34	.28	.23	.33	.27	.22	.31	.26	.22	.20



C Range: 0 - 360DEG
 C Interval: 22.5DEG
 Test Speed: HIGH
 Temperature:25.3°C
 Operators:linye
 Test Date:2026-03-06

γ Range: 0 - 180DEG
 γ Interval: 0.5DEG
 Test System:EVERFINE GO-R5000_V2 SYSTEM V2.00.459
 Humidity:58.9%
 Test Distance:26.000m [K=1.0000]
 Remarks:

WEC AND CCEC

Test:U:119.90V I:0.3086A P:33.780W PF:0.9129 Freq:60.00Hz Lamp Flux:3125.02x1 lm		
NAME: 19寸北美吸顶灯	TYPE: 吸顶灯	WEIGHT: 1
SPEC.: /	DIM.: d=0.48	SERIAL No.: SY2500238-4#3000K
MFR.: 研发中心	SUR.: d=0.48	Shielding Angle: /

ρ_{CC}	80%			70%			50%			30%			10%			0
ρ_w	50%	30%	10%	50%	30%	10%	50%	30%	10%	50%	30%	10%	50%	30%	10%	0
ρ_{fc}	20%			20%			20%			20%			20%			0
RCR	RCR:Room Cavity Ratio						Wall Exitance Coefficients(WEC)									
0.0																
1.0	.339	.193	.061	.329	.188	.060	.310	.178	.057	.292	.169	.054	.276	.160	.052	
2.0	.307	.168	.052	.298	.164	.051	.281	.156	.049	.265	.149	.047	.250	.142	.045	
3.0	.279	.149	.045	.271	.145	.044	.256	.139	.042	.241	.132	.041	.228	.126	.039	
4.0	.255	.133	.039	.248	.130	.038	.234	.124	.037	.221	.119	.036	.209	.114	.035	
5.0	.234	.119	.035	.228	.117	.034	.215	.112	.033	.203	.107	.032	.192	.103	.031	
6.0	.216	.108	.031	.210	.106	.031	.199	.102	.030	.188	.098	.029	.178	.094	.028	
7.0	.200	.099	.028	.195	.097	.028	.185	.093	.027	.175	.090	.026	.166	.086	.025	
8.0	.187	.091	.026	.182	.089	.025	.172	.086	.025	.163	.083	.024	.155	.080	.023	
9.0	.175	.084	.024	.170	.083	.023	.161	.080	.023	.153	.077	.022	.146	.074	.021	
10.0	.164	.079	.022	.160	.077	.022	.152	.074	.021	.144	.072	.020	.137	.069	.020	

ρ_{CC}	80%			70%			50%			30%			10%			0
ρ_w	50%	30%	10%	50%	30%	10%	50%	30%	10%	50%	30%	10%	50%	30%	10%	0
ρ_{fc}	20%			20%			20%			20%			20%			0
RCR	RCR:Room Cavity Ratio						Ceiling Cavity Exitance Coefficients(CCEC)									
0.0	.268	.268	.268	.229	.229	.229	.156	.156	.156	.090	.090	.090	.029	.029	.029	
1.0	.261	.234	.210	.223	.201	.181	.152	.138	.125	.088	.080	.073	.028	.026	.024	
2.0	.253	.211	.175	.217	.181	.151	.149	.125	.105	.086	.073	.062	.027	.024	.020	
3.0	.245	.194	.152	.210	.167	.132	.144	.116	.093	.083	.068	.055	.027	.022	.018	
4.0	.238	.181	.137	.204	.156	.119	.140	.109	.084	.081	.064	.050	.026	.021	.016	
5.0	.230	.171	.126	.198	.148	.110	.136	.103	.078	.079	.061	.046	.025	.020	.015	
6.0	.223	.162	.119	.192	.141	.103	.132	.098	.073	.077	.058	.044	.025	.019	.014	
7.0	.216	.156	.113	.186	.135	.099	.129	.095	.070	.075	.056	.042	.024	.018	.014	
8.0	.210	.150	.109	.181	.130	.095	.125	.091	.067	.073	.054	.040	.024	.018	.013	
9.0	.204	.145	.106	.175	.126	.092	.122	.089	.065	.071	.052	.039	.023	.017	.013	
10.0	.198	.141	.103	.171	.122	.090	.118	.086	.064	.069	.051	.038	.022	.017	.013	

C Range: 0 - 360DEG
 C Interval: 22.5DEG
 Test Speed: HIGH
 Temperature:25.3°C
 Operators:linye
 Test Date:2026-03-06

γ Range: 0 - 180DEG
 γ Interval: 0.5DEG
 Test System:EVERFINE GO-R5000_V2 SYSTEM V2.00.459
 Humidity:58.9%
 Test Distance:26.000m [K=1.0000]
 Remarks:

UGR(Unified Glare Rating) Table

Test:U:119.90V I:0.3086A P:33.780W PF:0.9129 Freq:60.00Hz										
Lamp Flux:3125.02x1 lm										
NAME: 19寸北美吸顶灯				TYPE: 吸顶灯				WEIGHT: 1		
SPEC.: /				DIM.: d=0.48				SERIAL No.: SY2500238-4#3000K		
MFR.: 研发中心				SUR.: d=0.48				Shielding Angle: /		
ceiling/cavity	0.7	0.7	0.5	0.5	0.3	0.7	0.7	0.5	0.5	0.3
walls	0.5	0.3	0.5	0.3	0.3	0.5	0.3	0.5	0.3	0.3
working plane	0.2	0.2	0.2	0.2	0.2	0.2	0.2	0.2	0.2	0.2
Room dimensions	Viewed crosswise					Viewed endwise				
x = 2H y = 2H	17.9	19.3	18.3	19.7	20.1	17.7	19.1	18.1	19.5	19.9
3H	19.6	20.9	20.1	21.4	21.8	19.4	20.7	19.8	21.1	21.6
4H	20.5	21.7	20.9	22.1	22.6	20.2	21.4	20.6	21.8	22.3
6H	21.2	22.4	21.7	22.9	23.4	20.9	22.0	21.4	22.5	23.0
8H	21.6	22.7	22.1	23.2	23.7	21.2	22.3	21.7	22.8	23.3
12H	22.0	23.1	22.5	23.6	24.1	21.6	22.7	22.1	23.1	23.6
4H 2H	18.5	19.7	18.9	20.1	20.6	18.3	19.6	18.8	20.0	20.5
3H	20.4	21.5	20.9	22.0	22.5	20.2	21.3	20.7	21.8	22.3
4H	21.4	22.4	21.9	22.9	23.5	21.2	22.2	21.7	22.7	23.2
6H	22.4	23.2	22.9	23.8	24.4	22.0	22.9	22.6	23.5	24.0
8H	22.8	23.7	23.4	24.2	24.8	22.5	23.3	23.0	23.8	24.4
12H	23.3	24.1	23.9	24.6	25.3	22.9	23.7	23.5	24.2	24.8
8H 4H	21.8	22.6	22.3	23.1	23.7	21.5	22.4	22.1	22.9	23.5
6H	22.9	23.6	23.5	24.2	24.8	22.6	23.3	23.2	23.9	24.5
8H	23.5	24.1	24.1	24.7	25.4	23.2	23.8	23.8	24.4	25.1
12H	24.2	24.7	24.8	25.4	26.0	23.8	24.4	24.4	25.0	25.7
12H 4H	21.8	22.6	22.4	23.1	23.7	21.6	22.4	22.2	22.9	23.5
6H	23.0	23.7	23.6	24.2	24.9	22.8	23.4	23.4	24.0	24.6
8H	23.7	24.3	24.4	24.9	25.6	23.4	24.0	24.0	24.6	25.3
Variations with the observer position at spacings(CIE Pub.117):										
S = 1.0H	+ 0.1 / - 0.1					+ 0.1 / - 0.2				
1.5H	+ 0.2 / - 0.3					+ 0.2 / - 0.3				
2.0H	+ 0.1 / - 0.3					+ 0.1 / - 0.3				

CIE Pub.117, 3125 lm Total Lamp Luminous Flux Corrected (8log(F/F0) = 4.0)
 Area: 0.180956 m2

C Range: 0 - 360DEG
 C Interval: 22.5DEG
 Test Speed: HIGH
 Temperature:25.3°C
 Operators:linye
 Test Date:2026-03-06

γ Range: 0 - 180DEG
 γ Interval: 0.5DEG
 Test System:EVERFINE GO-R5000_V2 SYSTEM V2.00.459
 Humidity:58.9%
 Test Distance:26.000m [K=1.0000]
 Remarks:

UTILIZATION FACTORS TABLE

Test:U:119.90V I:0.3086A P:33.780W PF:0.9129 Freq:60.00Hz Lamp Flux:3125.02x1 lm		
NAME: 19寸北美吸顶灯	TYPE: 吸顶灯	WEIGHT: 1
SPEC.: /	DIM.: d=0.48	SERIAL No.: SY2500238-4#3000K
MFR.: 研发中心	SUR.: d=0.48	Shielding Angle: /

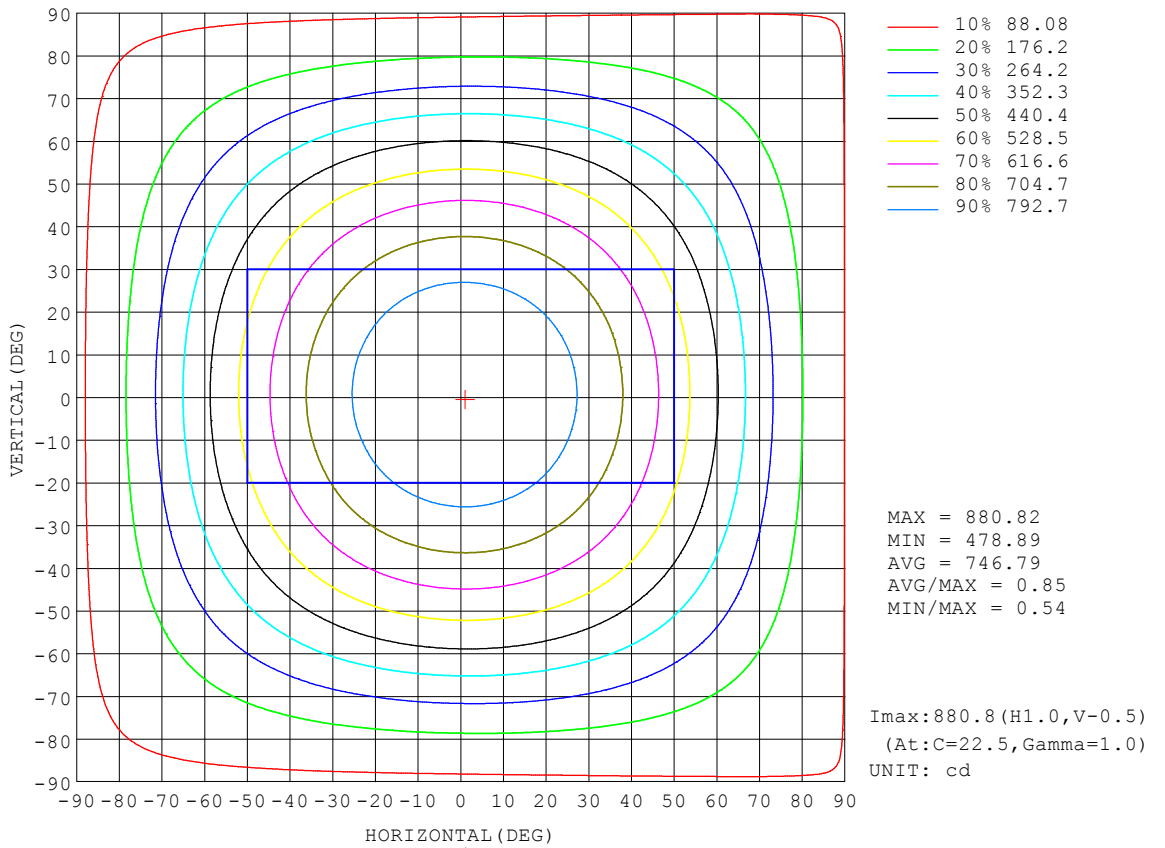
REFLECTANCE										
Ceiling	0.8	0.8	0.8	0.7	0.7	0.7	0.5	0.5	0.5	0
Walls	0.7	0.5	0.3	0.7	0.5	0.3	0.7	0.5	0.3	0
Working plane	0.2	0.2	0.2	0.2	0.2	0.2	0.2	0.2	0.2	0
ROOM INDEX	UTILIZATION FACTORS (PERCENT) $k(RI) \times RCR = 5$									
k = 0.60	53	41	34	52	40	33	50	40	33	26
0.80	62	50	43	61	50	42	58	48	41	34
1.00	70	59	51	69	58	50	66	58	49	41
1.25	78	66	58	76	65	58	72	63	56	48
1.50	83	72	64	80	70	63	76	68	61	52
2.00	90	80	73	87	78	72	82	75	69	59
2.50	94	85	78	91	83	77	86	79	74	63
3.00	97	89	83	94	87	81	89	83	78	67
4.00	102	95	90	98	92	87	92	88	84	72
5.00	104	99	94	101	96	91	95	91	87	74
ROOM INDEX	UF(total)									Direct
According to DIN EN 13032-2 2004			Suspended				SHRNOM = 1.25			

C Range: 0 - 360DEG
 C Interval: 22.5DEG
 Test Speed: HIGH
 Temperature:25.3°C
 Operators:linye
 Test Date:2026-03-06

γ Range: 0 - 180DEG
 γ Interval: 0.5DEG
 Test System:EVERFINE GO-R5000_V2 SYSTEM V2.00.459
 Humidity:58.9%
 Test Distance:26.000m [K=1.0000]
 Remarks:

ISOCANDELA DIAGRAM

Test:U:119.90V I:0.3086A P:33.780W PF:0.9129 Freq:60.00Hz Lamp Flux:3125.02x1 lm		
NAME: 19寸北美吸顶灯	TYPE: 吸顶灯	WEIGHT: 1
SPEC.: /	DIM.: d=0.48	SERIAL No.: SY2500238-4#3000K
MFR.: 研发中心	SUR.: d=0.48	Shielding Angle: /

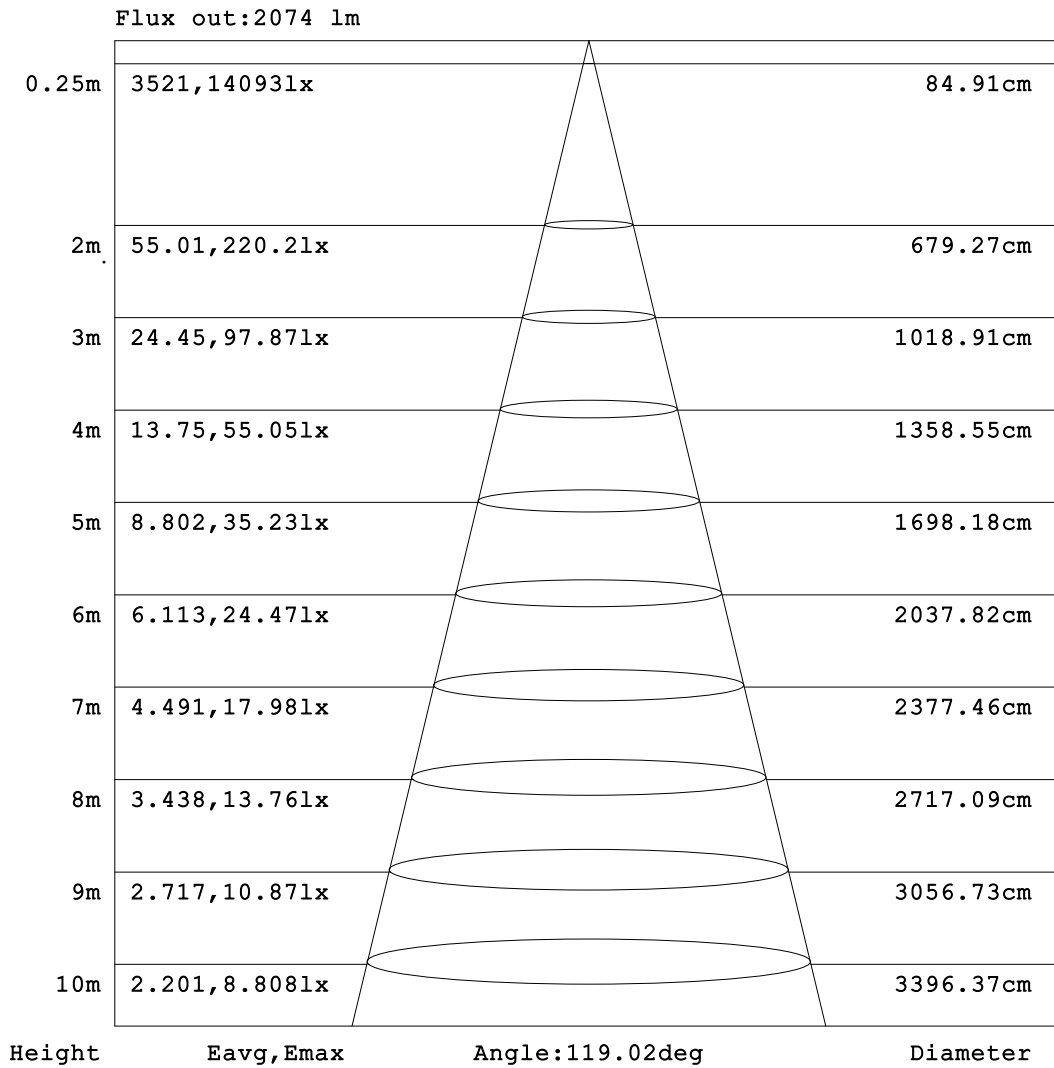


C Range: 0 - 360DEG
 C Interval: 22.5DEG
 Test Speed: HIGH
 Temperature:25.3°C
 Operators:linye
 Test Date:2026-03-06

γ Range: 0 - 180DEG
 γ Interval: 0.5DEG
 Test System:EVERFINE GO-R5000_V2 SYSTEM V2.00.459
 Humidity:58.9%
 Test Distance:26.000m [K=1.0000]
 Remarks:

AAI Figure

Test:U:119.90V I:0.3086A P:33.780W PF:0.9129 Freq:60.00Hz Lamp Flux:3125.02x1 lm		
NAME: 19寸北美吸顶灯	TYPE: 吸顶灯	WEIGHT: 1
SPEC.: /	DIM.: d=0.48	SERIAL No.: SY2500238-4#3000K
MFR.: 研发中心	SUR.: d=0.48	Shielding Angle: /



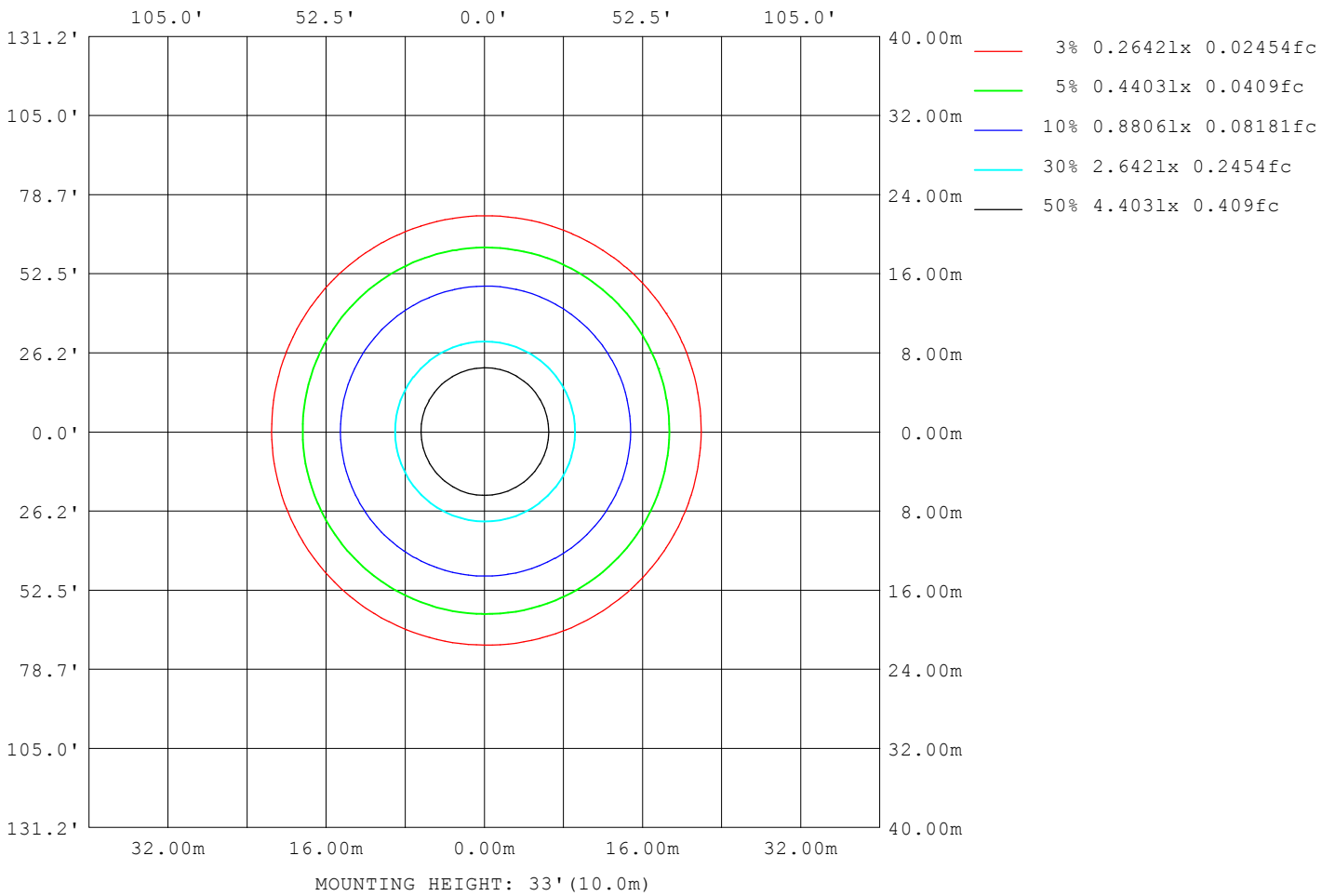
Note: The Curves indicate the illuminated area and the average illumination when the luminaire is at different distance.

C Range: 0 - 360DEG
C Interval: 22.5DEG
Test Speed: HIGH
Temperature: 25.3°C
Operators: linye
Test Date: 2026-03-06

γ Range: 0 - 180DEG
γ Interval: 0.5DEG
Test System: EVERFINE GO-R5000_V2 SYSTEM V2.00.459
Humidity: 58.9%
Test Distance: 26.000m [K=1.0000]
Remarks:

ISOLUX DIAGRAM

Test:U:119.90V I:0.3086A P:33.780W PF:0.9129 Freq:60.00Hz Lamp Flux:3125.02x1 lm		
NAME: 19寸北美吸顶灯	TYPE: 吸顶灯	WEIGHT: 1
SPEC.: /	DIM.: d=0.48	SERIAL No.: SY2500238-4#3000K
MFR.: 研发中心	SUR.: d=0.48	Shielding Angle: /



C Range: 0 - 360DEG
 C Interval: 22.5DEG
 Test Speed: HIGH
 Temperature:25.3°C
 Operators:linye
 Test Date:2026-03-06

γ Range: 0 - 180DEG
 γ Interval: 0.5DEG
 Test System:EVERFINE GO-R5000_V2 SYSTEM V2.00.459
 Humidity:58.9%
 Test Distance:26.000m [K=1.0000]
 Remarks:

LED Avg.L Report

Test:U:119.90V I:0.3086A P:33.780W PF:0.9129 Freq:60.00Hz Lamp Flux:3125.02x1 lm		
NAME: 19寸北美吸顶灯	TYPE: 吸顶灯	WEIGHT: 1
SPEC.: /	DIM.: d=0.48	SERIAL No.: SY2500238-4#3000K
MFR.: 研发中心	SUR.: d=0.48	Shielding Angle: /

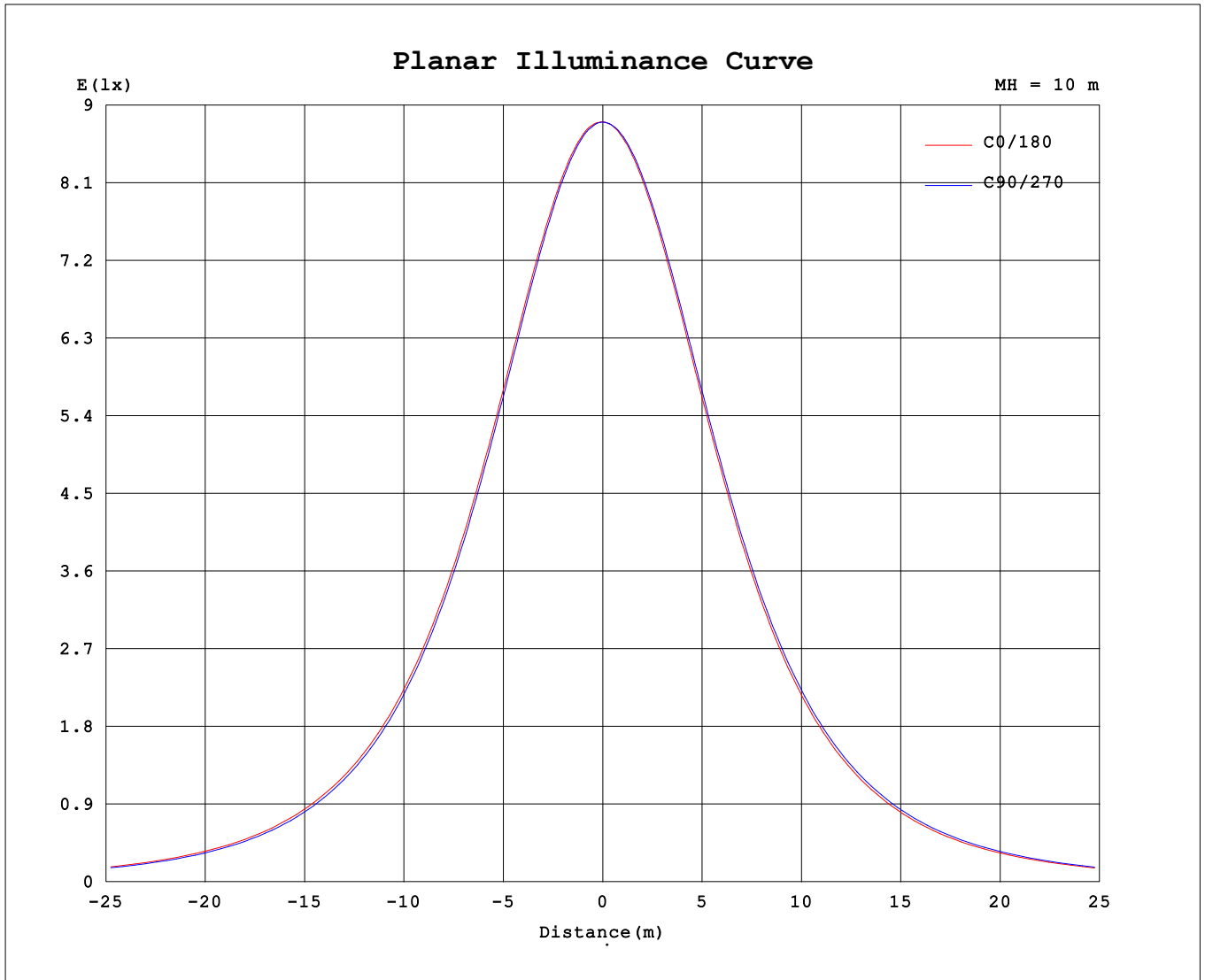
AvgL	cd/m2
L_0~180 (65) av	4765
L_0~180 (75) av	4897
L_0~180 (85) av	7446
L_90~270 (65) av	4760
L_90~270 (75) av	4874
L_90~270 (85) av	7315
L_45 (65) av	4764
L_45 (75) av	4885
L_45 (85) av	7374

Standard: GB/T 29293-2012

C Range: 0 - 360DEG
 C Interval: 22.5DEG
 Test Speed: HIGH
 Temperature:25.3℃
 Operators:linye
 Test Date:2026-03-06

γ Range: 0 - 180DEG
 γ Interval: 0.5DEG
 Test System:EVERFINE GO-R5000_V2 SYSTEM V2.00.459
 Humidity:58.9%
 Test Distance:26.000m [K=1.0000]
 Remarks:

Planar Illuminance Curve



C Range: 0 - 360DEG
 C Interval: 22.5DEG
 Test Speed: HIGH
 Temperature: 25.3°C
 Operators: linye
 Test Date: 2026-03-06

γ Range: 0 - 180DEG
 γ Interval: 0.5DEG
 Test System: EVERFINE GO-R5000_V2 SYSTEM V2.00.459
 Humidity: 58.9%
 Test Distance: 26.000m [K=1.0000]
 Remarks:

LUMINOUS DISTRIBUTION INTENSITY DATA

Test:U:119.90V I:0.3086A P:33.780W PF:0.9129 Freq:60.00Hz Lamp Flux:3125.02x1 lm		
NAME: 19寸北美吸顶灯	TYPE: 吸顶灯	WEIGHT: 1
SPEC.: /	DIM.: d=0.48	SERIAL No.: SY2500238-4#3000K
MFR.: 研发中心	SUR.: d=0.48	Shielding Angle: /

Table--1

UNIT: cd

C (DEG) \ γ (DEG)	0	22.5	45	67.5	90	112.5	135	157.5	180	202.5	225	247.5	270	292.5	315	337.5			
0	880	880	880	880	880	880	880	880	880	880	880	880	880	880	880	880			
5	880	879	878	877	877	877	877	877	876	877	877	878	878	879	879	879			
10	872	870	870	868	867	867	866	866	866	867	869	870	871	871	871	872			
15	857	856	854	852	850	849	849	848	850	851	853	854	856	857	858	857			
20	835	834	831	829	827	826	825	825	826	827	830	832	834	835	836	836			
25	808	805	802	799	797	795	794	794	795	798	800	803	805	807	808	808			
30	773	770	767	763	760	758	757	757	759	761	765	768	770	773	774	774			
35	732	728	725	721	718	715	714	713	716	719	723	726	729	732	734	733			
40	685	681	677	673	669	667	665	664	667	670	675	679	682	684	686	687			
45	632	628	624	619	615	612	610	610	612	617	621	625	629	632	634	634			
50	574	570	565	561	556	553	551	550	553	558	563	567	571	574	576	577			
55	512	507	502	497	493	489	487	487	490	494	500	504	509	512	514	514			
60	445	441	435	430	425	422	420	419	423	427	432	437	442	445	447	448			
65	376	372	366	361	356	352	350	350	353	357	363	368	372	376	378	379			
70	307	303	298	293	287	284	282	281	285	289	293	298	303	307	309	310			
75	240	236	231	226	221	218	216	215	218	222	227	231	235	239	242	242			
80	178	174	170	165	161	158	157	156	158	161	165	169	173	176	178	180			
85	125	122	118	114	111	109	108	108	109	111	114	117	120	123	125	126			
90	87.5	85.7	83.1	80.7	78.7	77.6	77.0	77.0	77.8	78.8	79.9	81.1	82.7	84.6	86.4	87.6			
95	67.0	66.0	64.7	63.4	62.3	61.8	61.5	61.5	61.6	61.9	62.3	62.8	63.7	64.9	66.2	67.2			
100	56.1	55.6	54.8	54.2	53.8	53.4	53.3	53.3	52.9	53.0	53.0	53.4	53.8	54.5	55.3	55.9			
105	50.2	49.8	49.4	49.3	49.2	49.0	48.9	49.0	48.4	48.4	48.3	48.4	48.7	49.1	49.5	49.8			
110	47.3	47.1	47.0	47.3	47.5	47.3	47.3	47.4	47.0	46.8	46.7	46.8	47.0	47.1	47.0	46.8			
115	46.6	46.4	46.5	46.9	47.3	47.1	47.1	47.2	47.1	47.0	47.0	47.1	47.3	47.0	46.8	46.7			
120	46.5	46.4	46.5	46.9	47.3	47.1	47.1	47.5	47.8	47.6	47.5	47.5	47.6	47.2	47.0	46.7			
125	46.5	46.4	46.5	47.1	47.6	47.7	47.6	47.7	47.9	47.9	47.7	47.8	47.7	47.3	47.0	46.7			
130	46.5	46.5	46.9	47.4	47.7	47.7	47.7	47.9	47.9	48.0	47.8	48.0	47.7	47.3	47.1	46.8			
135	46.5	46.5	46.8	47.4	47.7	47.7	47.7	47.9	47.9	48.0	47.9	48.0	47.7	47.3	47.0	46.9			
140	46.6	46.7	46.7	47.3	47.8	47.7	47.7	47.9	47.9	48.0	48.1	48.0	47.7	47.3	47.1	47.0			
145	47.0	46.9	47.1	47.7	47.8	47.7	47.7	47.9	47.9	48.0	48.0	48.0	47.7	47.5	47.3	47.2			
150	47.8	47.7	47.6	47.8	47.9	48.0	48.2	48.4	48.2	48.3	48.2	48.0	48.1	47.9	48.1	48.1			
155	48.4	48.0	47.7	48.0	48.2	48.3	48.4	48.5	48.5	48.3	48.4	48.4	48.3	48.3	48.3	48.3			
160	46.0	45.8	45.5	45.2	45.9	46.6	47.0	47.3	46.5	46.6	47.2	47.6	47.6	47.6	47.2	47.0			
165	43.4	43.0	42.4	42.4	43.3	43.9	44.4	45.1	43.9	43.9	44.3	45.1	45.2	45.2	44.9	44.7			
170	38.5	38.3	38.8	39.2	39.8	39.8	40.3	40.9	40.4	40.4	40.7	40.8	41.2	40.7	40.2	39.6			
175	45.5	45.7	45.7	45.8	45.9	46.1	46.4	46.2	46.4	46.2	46.5	46.5	46.4	46.9	46.7	46.2			
180	46.2	46.2	46.2	46.1	46.2	46.4	46.7	46.5	46.3	46.2	46.2	46.2	46.1	46.1	46.5	46.7			

C Range: 0 - 360DEG
 C Interval: 22.5DEG
 Test Speed: HIGH
 Temperature:25.3℃
 Operators:linye
 Test Date:2026-03-06

γ Range: 0 - 180DEG
 γ Interval: 0.5DEG
 Test System:EVERFINE GO-R5000_V2 SYSTEM V2.00.459
 Humidity:58.9%
 Test Distance:26.000m [K=1.0000]
 Remarks: