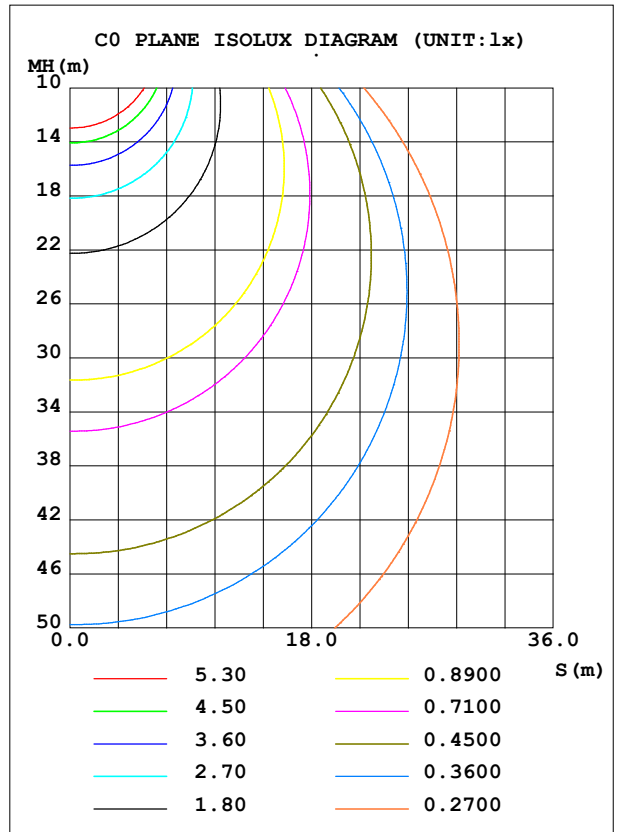
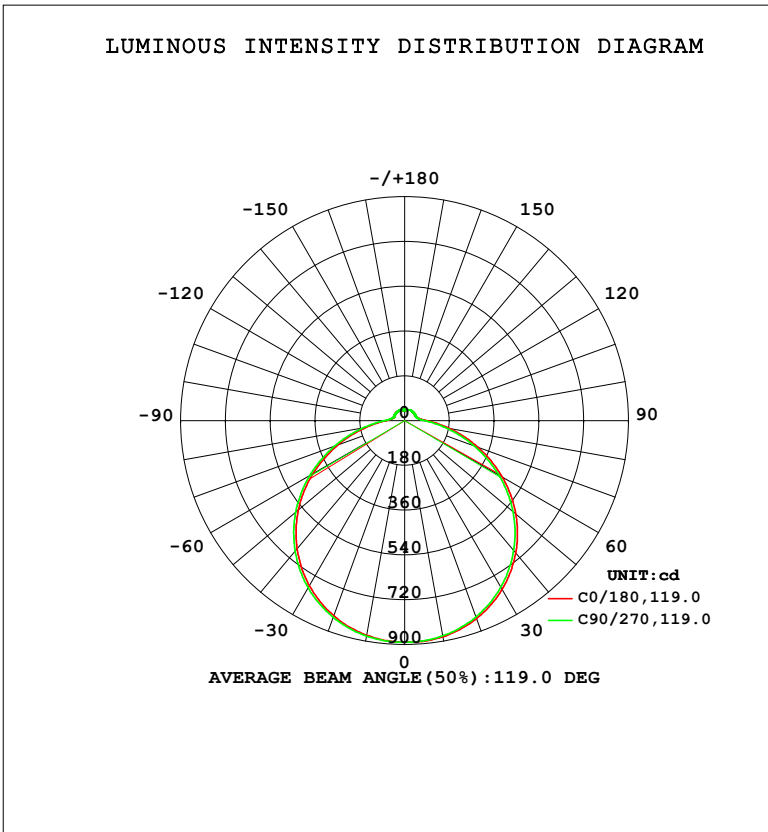


LUMINAIRE PHOTOMETRIC TEST REPORT

Test:U:119.89V I:0.3054A P:33.583W PF:0.9171 Freq:60.00Hz Lamp Flux:3160.35x1 lm		
NAME: 19寸北美吸顶灯	TYPE: 吸顶灯	WEIGHT: 1
SPEC.: /	DIM.: d=0.48	SERIAL No.: SY2500238-4#3500K
MFR.: 研发中心	SUR.: d=0.48	Shielding Angle: /

DATA OF LAMP		PHOTOMETRIC DATA				Eff: 94.11 lm/W
MODEL	3500K	I _{max} (cd)	891.3	S/MH (C0/180)	1.28	
NOMINAL POWER (W)	/	LOR (%)	100.0	S/MH (C90/270)	1.29	
RATED VOLTAGE (V)	120	TOTAL FLUX (lm)	3160.3	η UP, DN (C0-180)	5.1, 45.0	
NOMINAL FLUX (lm)	3160.35	CIE CLASS	SEMI-D.	η UP, DN (C180-360)	5.1, 44.9	
LAMPS INSIDE	1	η up (%)	10.1	CIBSE SHR NOM	1.50	
TEST VOLTAGE (V)	/	η down (%)	89.9	CIBSE SHR MAX	1.50	



C Range: 0 - 360DEG
 C Interval: 22.5DEG
 Test Speed: HIGH
 Temperature: 25.3°C
 Operators: linye
 Test Date: 2026-03-06

γ Range: 0 - 180DEG
 γ Interval: 0.5DEG
 Test System: EVERFINE GO-R5000_V2 SYSTEM V2.00.459
 Humidity: 58.9%
 Test Distance: 26.000m [K=1.0000]
 Remarks:

ZONAL FLUX DIAGRAM

ZONAL FLUX DIAGRAM:

γ	C0	C45	C90	C135	C180	C225	C270	C315	γ	Φ zone	Φ total	%lum, lamp
5	890.0	889.5	888.1	887.3	886.8	887.5	888.6	889.3	0- 5	21.27	21.27	0.67,0.67
10	882.1	881.1	878.6	876.7	876.2	876.9	880.0	882.1	5- 10	63.24	84.51	2.67,2.67
15	867.9	866.5	862.2	859.0	859.1	860.4	864.2	867.3	10- 15	103.4	187.9	5.95,5.95
20	846.5	844.7	839.1	835.7	834.4	836.5	841.0	845.3	15- 20	140.4	328.3	10.4,10.4
25	818.2	816.0	809.9	804.8	803.5	806.1	811.5	817.2	20- 25	173.2	501.5	15.9,15.9
30	783.0	780.4	772.8	767.4	766.2	768.6	775.7	782.5	25- 30	200.7	702.1	22.2,22.2
35	742.0	738.8	730.6	723.2	722.3	725.7	733.7	741.2	30- 35	221.9	924.1	29.2,29.2
40	694.7	691.2	682.0	673.7	672.6	676.1	684.8	692.9	35- 40	236.2	1160	36.7,36.7
45	641.6	637.9	627.8	618.9	617.3	621.5	631.1	639.7	40- 45	243.2	1403	44.4,44.4
50	583.4	579.5	568.6	558.9	557.6	561.9	572.1	581.3	45- 50	242.5	1646	52.1,52.1
55	520.0	516.3	504.8	494.4	493.1	497.2	508.2	518.4	50- 55	234.2	1880	59.5,59.5
60	452.8	448.9	436.8	426.2	424.7	428.7	440.0	451.1	55- 60	218.4	2099	66.4,66.4
65	383.1	378.9	366.7	356.0	354.4	358.6	370.0	381.1	60- 65	196.1	2295	72.6,72.6
70	313.4	309.4	296.9	286.2	285.0	288.5	299.7	311.3	65- 70	168.8	2463	77.9,77.9
75	245.6	241.5	229.5	219.5	218.0	220.8	231.5	242.8	70- 75	138.3	2602	82.3,82.3
80	182.6	178.5	167.9	159.4	157.2	159.4	168.8	179.2	75- 80	106.7	2708	85.7,85.7
85	128.6	124.8	116.2	109.9	108.7	110.0	117.0	125.7	80- 85	77.32	2786	88.1,88.1
90	89.43	86.83	81.51	78.05	77.40	77.52	81.36	86.91	85- 90	53.82	2840	89.9,89.9
95	68.19	66.59	63.69	62.03	61.50	61.29	63.32	66.80	90- 95	39.56	2879	91.1,91.1
100	57.03	55.95	54.57	53.62	52.95	52.78	54.01	55.96	95-100	32.04	2911	92.1,92.1
105	50.87	50.05	49.66	49.18	48.52	48.39	49.09	50.11	100-105	27.70	2939	93,93
110	47.91	47.50	47.63	47.48	47.15	47.22	47.72	47.48	105-110	25.23	2964	93.8,93.8
115	47.10	46.84	47.34	47.24	47.34	47.51	47.95	47.43	110-115	23.98	2988	94.6,94.6
120	47.01	46.84	47.67	47.39	48.15	48.08	48.19	47.62	115-120	23.06	3011	95.3,95.3
125	47.01	46.89	47.72	47.81	48.39	48.08	48.19	47.62	120-125	22.02	3033	96,96
130	47.01	47.03	48.00	48.10	48.39	48.17	48.19	47.62	125-130	20.77	3054	96.6,96.6
135	47.01	47.03	47.96	48.05	48.39	48.17	48.19	47.62	130-135	19.32	3073	97.2,97.2
140	47.06	47.03	47.96	48.05	48.24	48.17	48.19	47.62	135-140	17.70	3091	97.8,97.8
145	47.48	47.27	47.96	48.10	48.15	48.17	48.24	47.81	140-145	15.96	3107	98.3,98.3
150	48.24	47.91	48.48	48.34	48.15	48.17	48.43	48.57	145-150	14.17	3121	98.8,98.8
155	48.34	48.27	48.57	49.04	48.48	48.60	48.43	48.66	150-155	12.28	3133	99.1,99.1
160	45.93	45.66	45.92	47.01	46.87	47.43	47.59	47.53	155-160	10.06	3143	99.5,99.5
165	43.89	43.22	43.74	44.82	44.44	44.77	45.49	45.40	160-165	7.562	3151	99.7,99.7
170	38.95	39.39	40.26	40.80	40.80	40.83	41.32	40.56	165-170	5.059	3156	99.9,99.9
175	46.01	46.49	46.39	46.96	46.96	46.94	46.91	47.19	170-175	3.130	3159	100,100
180	46.87	46.89	46.72	47.15	46.91	46.94	46.87	46.91	175-180	1.121	3160	100,100
DEG	LUMINOUS INTENSITY:cd								UNIT:lm			

Conical surface Flux(90deg): 1403.4 lm

%lum = 44.4%
%lamp = 44.4%

Conical surface Flux(120deg): 2098.5 lm

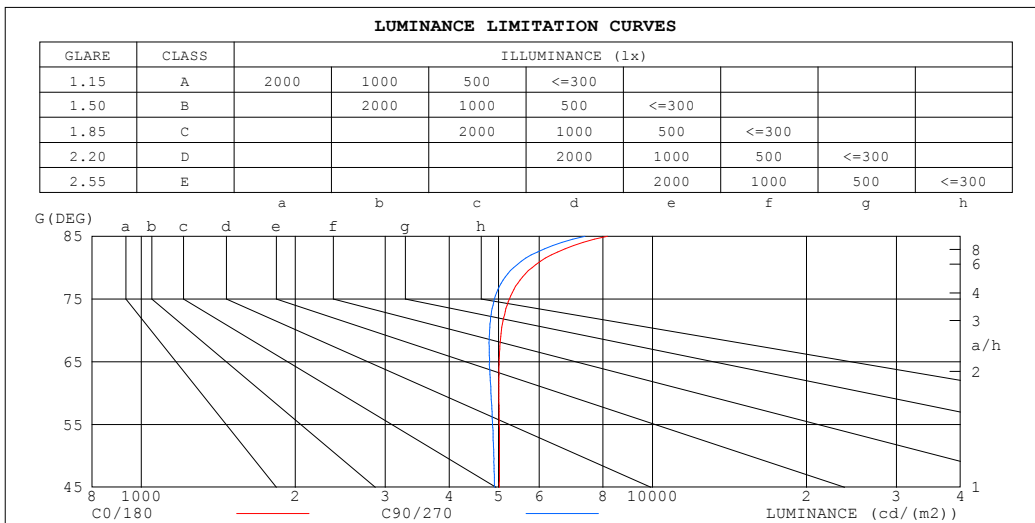
%lum = 66.4%
%lamp = 66.4%

C Range: 0 - 360DEG
C Interval: 22.5DEG
Test Speed: HIGH
Temperature:25.3°C
Operators:linye
Test Date:2026-03-06

γ Range: 0 - 180DEG
γ Interval: 0.5DEG
Test System:EVERFINE GO-R5000_V2 SYSTEM V2.00.459
Humidity:58.9%
Test Distance:26.000m [K=1.0000]
Remarks:

LUMINANCE LIMITATION CURVES

Test:U:119.89V I:0.3054A P:33.583W PF:0.9171 Freq:60.00Hz Lamp Flux:3160.35x1 lm		
NAME: 19寸北美吸顶灯	TYPE: 吸顶灯	WEIGHT: 1
SPEC.: /	DIM.: d=0.48	SERIAL No.: SY2500238-4#3500K
MFR.: 研发中心	SUR.: d=0.48	Shielding Angle: /



LUMINANCE cd/(m2)		
G (DEG)	C0/180	C90/270
85	8158	7373
80	5812	5347
75	5245	4903
70	5065	4799
65	5011	4797
60	5007	4829
55	5012	4865
50	5017	4891
45	5016	4908

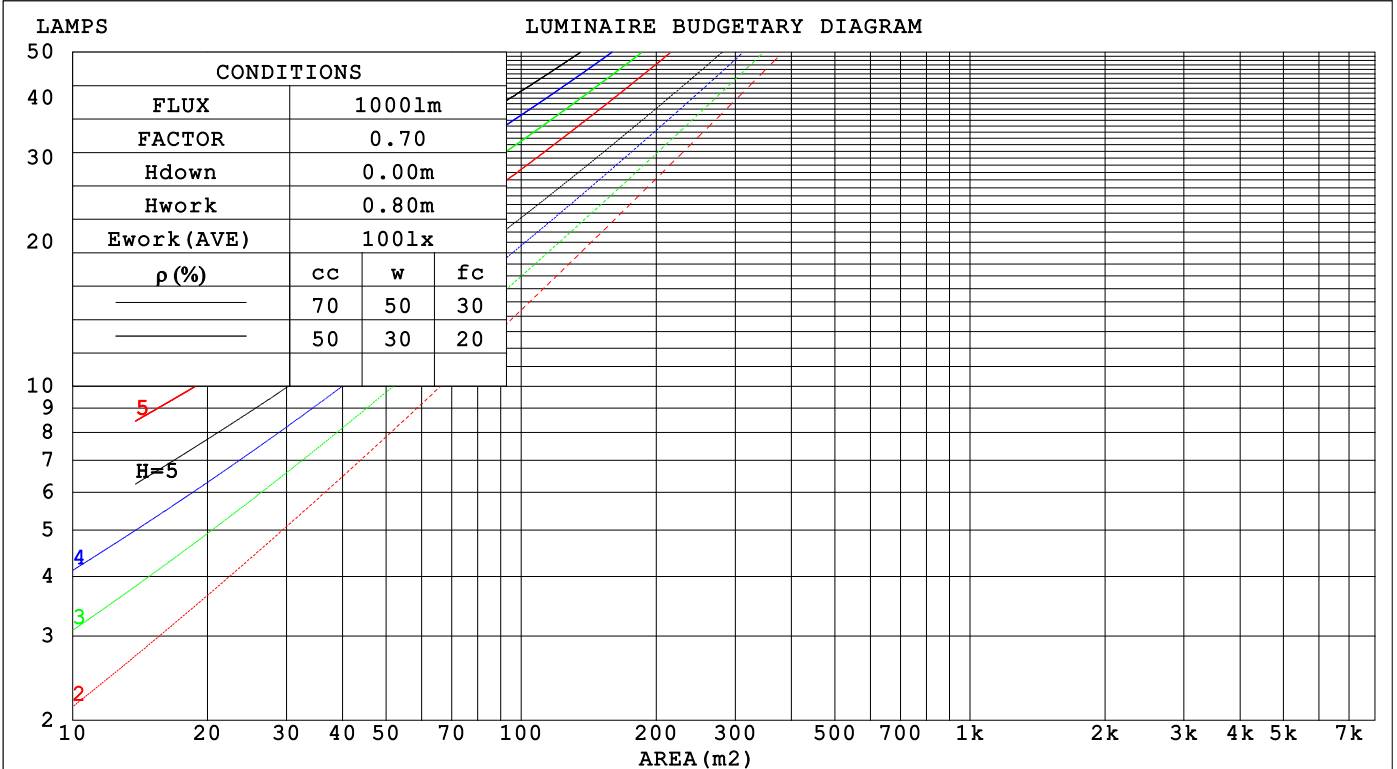
C Range: 0 - 360DEG
 C Interval: 22.5DEG
 Test Speed: HIGH
 Temperature:25.3°C
 Operators:linye
 Test Date:2026-03-06

γ Range: 0 - 180DEG
 γ Interval: 0.5DEG
 Test System:EVERFINE GO-R5000_V2 SYSTEM V2.00.459
 Humidity:58.9%
 Test Distance:26.000m [K=1.0000]
 Remarks:

CU AND LUMINAIRE BUDGETARY ESTIMATE DIAGRAM

Test:U:119.89V I:0.3054A P:33.583W PF:0.9171 Freq:60.00Hz Lamp Flux:3160.35x1 lm		
NAME: 19寸北美吸顶灯	TYPE: 吸顶灯	WEIGHT: 1
SPEC.: /	DIM.: d=0.48	SERIAL No.: SY2500238-4#3500K
MFR.: 研发中心	SUR.: d=0.48	Shielding Angle: /

ρcc	80%			70%			50%			30%			10%			0
ρw	50%	30%	10%	50%	30%	10%	50%	30%	10%	50%	30%	10%	50%	30%	10%	0
ρfc	20%			20%			20%			20%			20%			0
RCR	RCR:Room Cavity Ratio															
	Coefficients of Utilization(CU)															
0.0	1.17	1.17	1.17	1.13	1.13	1.13	1.05	1.05	1.05	.99	.99	.99	.93	.93	.93	.90
1.0	.00	.95	.91	.97	.92	.88	.90	.87	.84	.85	.82	.79	.80	.77	.75	.73
2.0	.86	.79	.73	.84	.77	.71	.78	.73	.68	.74	.69	.65	.69	.65	.62	.59
3.0	.75	.67	.60	.73	.65	.59	.69	.62	.57	.64	.59	.54	.61	.56	.52	.49
4.0	.67	.57	.51	.65	.56	.50	.61	.54	.48	.57	.51	.46	.54	.49	.44	.42
5.0	.59	.50	.43	.58	.49	.43	.54	.47	.41	.51	.45	.40	.48	.43	.38	.36
6.0	.53	.44	.38	.52	.43	.37	.49	.41	.36	.46	.40	.35	.44	.38	.34	.31
7.0	.48	.39	.33	.47	.38	.33	.44	.37	.32	.42	.35	.31	.40	.34	.30	.28
8.0	.44	.35	.29	.43	.35	.29	.40	.33	.28	.38	.32	.27	.37	.31	.27	.25
9.0	.40	.32	.26	.39	.31	.26	.37	.30	.25	.35	.29	.25	.34	.28	.24	.22
10.0	.37	.29	.24	.36	.28	.23	.34	.28	.23	.33	.27	.22	.31	.26	.22	.20



C Range: 0 - 360DEG
 C Interval: 22.5DEG
 Test Speed: HIGH
 Temperature:25.3°C
 Operators:linye
 Test Date:2026-03-06

γ Range: 0 - 180DEG
 γ Interval: 0.5DEG
 Test System:EVERFINE GO-R5000_V2 SYSTEM V2.00.459
 Humidity:58.9%
 Test Distance:26.000m [K=1.0000]
 Remarks:

WEC AND CCEC

Test:U:119.89V I:0.3054A P:33.583W PF:0.9171 Freq:60.00Hz Lamp Flux:3160.35x1 lm		
NAME: 19寸北美吸顶灯	TYPE: 吸顶灯	WEIGHT: 1
SPEC.: /	DIM.: d=0.48	SERIAL No.: SY2500238-4#3500K
MFR.: 研发中心	SUR.: d=0.48	Shielding Angle: /

ρ_{CC}	80%			70%			50%			30%			10%			0
ρ_w	50%	30%	10%	50%	30%	10%	50%	30%	10%	50%	30%	10%	50%	30%	10%	0
ρ_{fc}	20%			20%			20%			20%			20%			0
RCR	RCR:Room Cavity Ratio						Wall Exitance Coefficients(WEC)									
0.0																
1.0	.339	.193	.061	.329	.188	.060	.310	.178	.057	.292	.169	.054	.276	.160	.052	
2.0	.307	.168	.052	.298	.164	.051	.281	.156	.049	.265	.149	.047	.251	.142	.045	
3.0	.279	.149	.045	.271	.145	.044	.256	.139	.042	.241	.132	.041	.228	.126	.039	
4.0	.255	.133	.039	.248	.130	.038	.234	.124	.037	.221	.119	.036	.209	.114	.035	
5.0	.234	.119	.035	.228	.117	.034	.215	.112	.033	.203	.107	.032	.192	.103	.031	
6.0	.216	.108	.031	.210	.106	.031	.199	.102	.030	.188	.098	.029	.178	.094	.028	
7.0	.200	.099	.028	.195	.097	.028	.185	.093	.027	.175	.090	.026	.166	.086	.025	
8.0	.187	.091	.026	.182	.089	.025	.172	.086	.025	.163	.083	.024	.155	.080	.023	
9.0	.175	.084	.024	.170	.083	.023	.161	.080	.023	.153	.077	.022	.146	.074	.021	
10.0	.164	.079	.022	.160	.077	.022	.152	.074	.021	.144	.072	.020	.137	.069	.020	

ρ_{CC}	80%			70%			50%			30%			10%			0
ρ_w	50%	30%	10%	50%	30%	10%	50%	30%	10%	50%	30%	10%	50%	30%	10%	0
ρ_{fc}	20%			20%			20%			20%			20%			0
RCR	RCR:Room Cavity Ratio						Ceiling Cavity Exitance Coefficients(CCEC)									
0.0	.268	.268	.268	.229	.229	.229	.156	.156	.156	.090	.090	.090	.029	.029	.029	
1.0	.260	.234	.210	.223	.201	.181	.152	.138	.125	.088	.080	.073	.028	.026	.024	
2.0	.253	.210	.175	.217	.181	.151	.148	.125	.105	.086	.073	.062	.027	.024	.020	
3.0	.245	.193	.152	.210	.167	.132	.144	.116	.092	.083	.068	.054	.027	.022	.018	
4.0	.238	.180	.137	.204	.156	.119	.140	.109	.084	.081	.064	.049	.026	.021	.016	
5.0	.230	.170	.126	.198	.147	.110	.136	.103	.077	.079	.060	.046	.025	.020	.015	
6.0	.223	.162	.119	.192	.140	.103	.132	.098	.073	.077	.058	.043	.025	.019	.014	
7.0	.216	.155	.113	.186	.135	.098	.128	.094	.070	.075	.056	.042	.024	.018	.014	
8.0	.209	.150	.109	.180	.130	.095	.125	.091	.067	.073	.054	.040	.023	.018	.013	
9.0	.203	.145	.105	.175	.126	.092	.121	.088	.065	.071	.052	.039	.023	.017	.013	
10.0	.198	.141	.103	.170	.122	.090	.118	.086	.064	.069	.051	.038	.022	.017	.013	

C Range: 0 - 360DEG
 C Interval: 22.5DEG
 Test Speed: HIGH
 Temperature:25.3°C
 Operators:linye
 Test Date:2026-03-06

γ Range: 0 - 180DEG
 γ Interval: 0.5DEG
 Test System:EVERFINE GO-R5000_V2 SYSTEM V2.00.459
 Humidity:58.9%
 Test Distance:26.000m [K=1.0000]
 Remarks:

UGR(Unified Glare Rating) Table

Test:U:119.89V I:0.3054A P:33.583W PF:0.9171 Freq:60.00Hz										
Lamp Flux:3160.35x1 lm										
NAME: 19寸北美吸顶灯				TYPE: 吸顶灯				WEIGHT: 1		
SPEC.: /				DIM.: d=0.48				SERIAL No.: SY2500238-4#3500K		
MFR.: 研发中心				SUR.: d=0.48				Shielding Angle: /		
ceiling/cavity	0.7	0.7	0.5	0.5	0.3	0.7	0.7	0.5	0.5	0.3
walls	0.5	0.3	0.5	0.3	0.3	0.5	0.3	0.5	0.3	0.3
working plane	0.2	0.2	0.2	0.2	0.2	0.2	0.2	0.2	0.2	0.2
Room dimensions	Viewed crosswise					Viewed endwise				
x = 2H y = 2H	18.0	19.4	18.4	19.8	20.2	17.8	19.3	18.2	19.6	20.0
3H	19.8	21.1	20.2	21.5	21.9	19.6	20.9	20.0	21.3	21.7
4H	20.6	21.8	21.1	22.3	22.7	20.4	21.6	20.8	22.0	22.5
6H	21.4	22.5	21.9	23.0	23.5	21.1	22.3	21.6	22.7	23.2
8H	21.7	22.9	22.2	23.3	23.8	21.4	22.6	21.9	23.0	23.5
12H	22.1	23.2	22.6	23.7	24.2	21.8	22.9	22.3	23.3	23.9
4H 2H	18.6	19.8	19.1	20.3	20.7	18.5	19.7	19.0	20.2	20.6
3H	20.6	21.7	21.1	22.1	22.7	20.4	21.5	20.9	22.0	22.5
4H	21.6	22.6	22.1	23.1	23.6	21.4	22.4	21.9	22.9	23.4
6H	22.5	23.4	23.1	23.9	24.5	22.3	23.1	22.8	23.7	24.3
8H	23.0	23.8	23.5	24.4	25.0	22.7	23.5	23.3	24.1	24.7
12H	23.5	24.2	24.1	24.8	25.4	23.1	23.9	23.7	24.5	25.1
8H 4H	21.9	22.7	22.5	23.3	23.9	21.8	22.6	22.3	23.1	23.7
6H	23.1	23.8	23.7	24.4	25.0	22.9	23.6	23.5	24.1	24.8
8H	23.7	24.3	24.3	24.9	25.6	23.4	24.1	24.1	24.7	25.3
12H	24.4	24.9	25.0	25.5	26.2	24.1	24.6	24.7	25.2	25.9
12H 4H	22.0	22.7	22.5	23.3	23.9	21.8	22.6	22.4	23.1	23.7
6H	23.2	23.8	23.8	24.4	25.1	23.0	23.6	23.6	24.2	24.9
8H	23.9	24.5	24.5	25.1	25.8	23.7	24.2	24.3	24.8	25.5
Variations with the observer position at spacings(CIE Pub.117):										
S = 1.0H	+ 0.1 / - 0.1					+ 0.1 / - 0.2				
1.5H	+ 0.2 / - 0.3					+ 0.2 / - 0.3				
2.0H	+ 0.1 / - 0.3					+ 0.1 / - 0.4				

CIE Pub.117, 3160 lm Total Lamp Luminous Flux Corrected (8log(F/F0) = 4.0)
 Area: 0.180956 m2

C Range: 0 - 360DEG
 C Interval: 22.5DEG
 Test Speed: HIGH
 Temperature:25.3°C
 Operators:linye
 Test Date:2026-03-06

γ Range: 0 - 180DEG
 γ Interval: 0.5DEG
 Test System:EVERFINE GO-R5000_V2 SYSTEM V2.00.459
 Humidity:58.9%
 Test Distance:26.000m [K=1.0000]
 Remarks:

UTILIZATION FACTORS TABLE

Test:U:119.89V I:0.3054A P:33.583W PF:0.9171 Freq:60.00Hz Lamp Flux:3160.35x1 lm		
NAME: 19寸北美吸顶灯	TYPE: 吸顶灯	WEIGHT: 1
SPEC.: /	DIM.: d=0.48	SERIAL No.: SY2500238-4#3500K
MFR.: 研发中心	SUR.: d=0.48	Shielding Angle: /

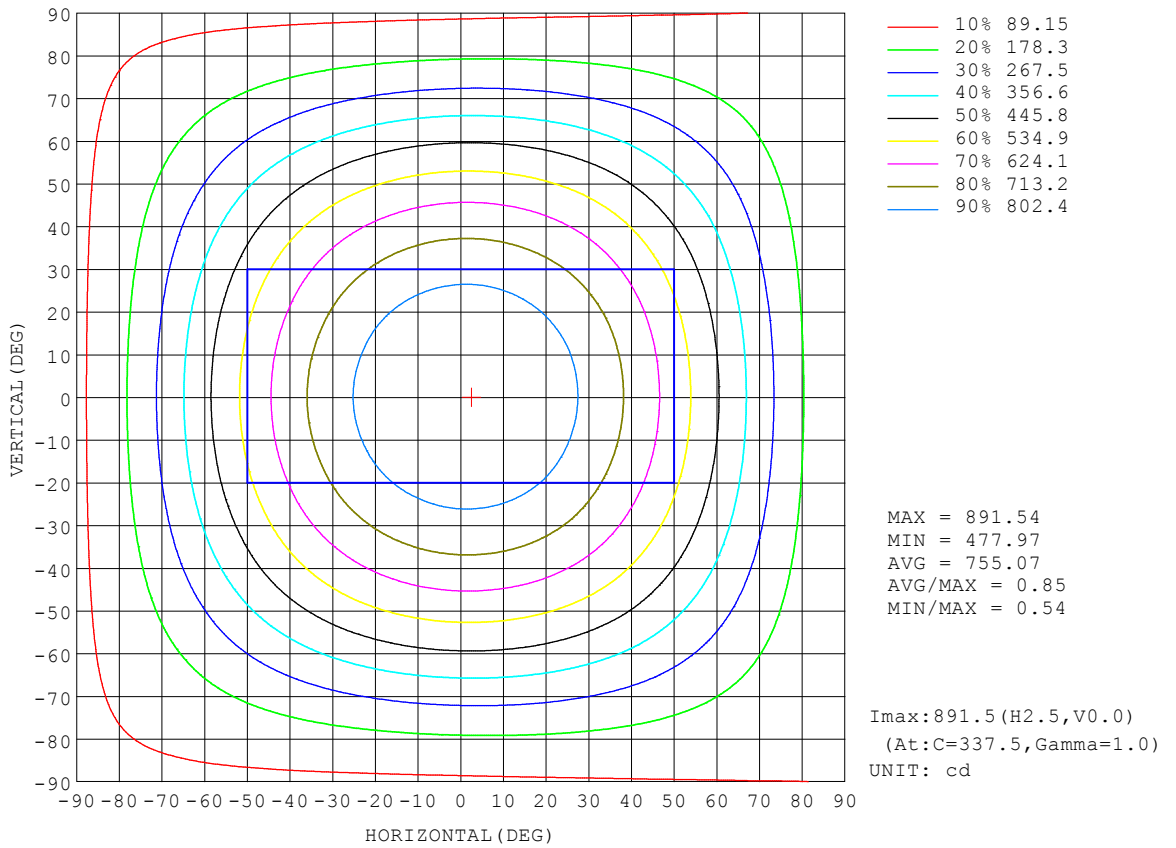
REFLECTANCE										
Ceiling	0.8	0.8	0.8	0.7	0.7	0.7	0.5	0.5	0.5	0
Walls	0.7	0.5	0.3	0.7	0.5	0.3	0.7	0.5	0.3	0
Working plane	0.2	0.2	0.2	0.2	0.2	0.2	0.2	0.2	0.2	0
ROOM INDEX	UTILIZATION FACTORS (PERCENT) $k(RI) \times RCR = 5$									
k = 0.60	53	41	34	52	40	33	50	40	33	26
0.80	62	50	43	61	50	42	59	48	41	34
1.00	71	59	51	69	58	50	66	58	49	41
1.25	78	66	58	76	65	58	72	63	56	48
1.50	83	72	64	80	70	63	76	68	61	52
2.00	90	80	73	87	78	72	82	75	69	59
2.50	94	85	78	91	83	77	86	79	74	63
3.00	97	89	83	94	87	81	89	83	78	67
4.00	102	95	90	98	92	87	92	88	84	72
5.00	104	99	94	101	96	91	95	91	87	74
ROOM INDEX	UF(total)									Direct
According to DIN EN 13032-2 2004			Suspended				SHRNOM = 1.25			

C Range: 0 - 360DEG
 C Interval: 22.5DEG
 Test Speed: HIGH
 Temperature:25.3°C
 Operators:linye
 Test Date:2026-03-06

γ Range: 0 - 180DEG
 γ Interval: 0.5DEG
 Test System:EVERFINE GO-R5000_V2 SYSTEM V2.00.459
 Humidity:58.9%
 Test Distance:26.000m [K=1.0000]
 Remarks:

ISOCANDELA DIAGRAM

Test:U:119.89V I:0.3054A P:33.583W PF:0.9171 Freq:60.00Hz Lamp Flux:3160.35x1 lm		
NAME: 19寸北美吸顶灯	TYPE: 吸顶灯	WEIGHT: 1
SPEC.: /	DIM.: d=0.48	SERIAL No.: SY2500238-4#3500K
MFR.: 研发中心	SUR.: d=0.48	Shielding Angle: /

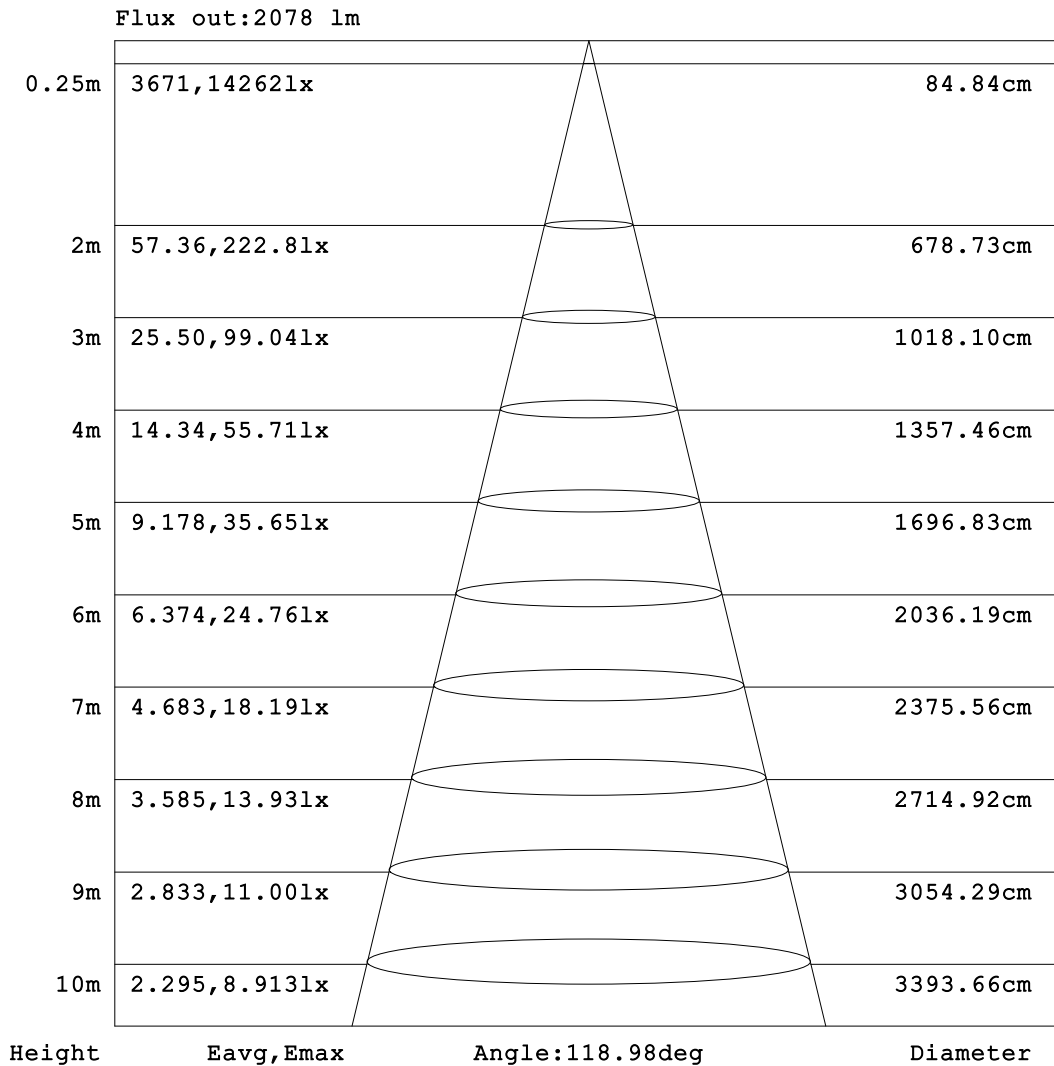


C Range: 0 - 360DEG
 C Interval: 22.5DEG
 Test Speed: HIGH
 Temperature:25.3°C
 Operators:linye
 Test Date:2026-03-06

γ Range: 0 - 180DEG
 γ Interval: 0.5DEG
 Test System:EVERFINE GO-R5000_V2 SYSTEM V2.00.459
 Humidity:58.9%
 Test Distance:26.000m [K=1.0000]
 Remarks:

AAI Figure

Test:U:119.89V I:0.3054A P:33.583W PF:0.9171 Freq:60.00Hz Lamp Flux:3160.35x1 lm		
NAME: 19寸北美吸顶灯	TYPE: 吸顶灯	WEIGHT: 1
SPEC.: /	DIM.: d=0.48	SERIAL No.: SY2500238-4#3500K
MFR.: 研发中心	SUR.: d=0.48	Shielding Angle: /



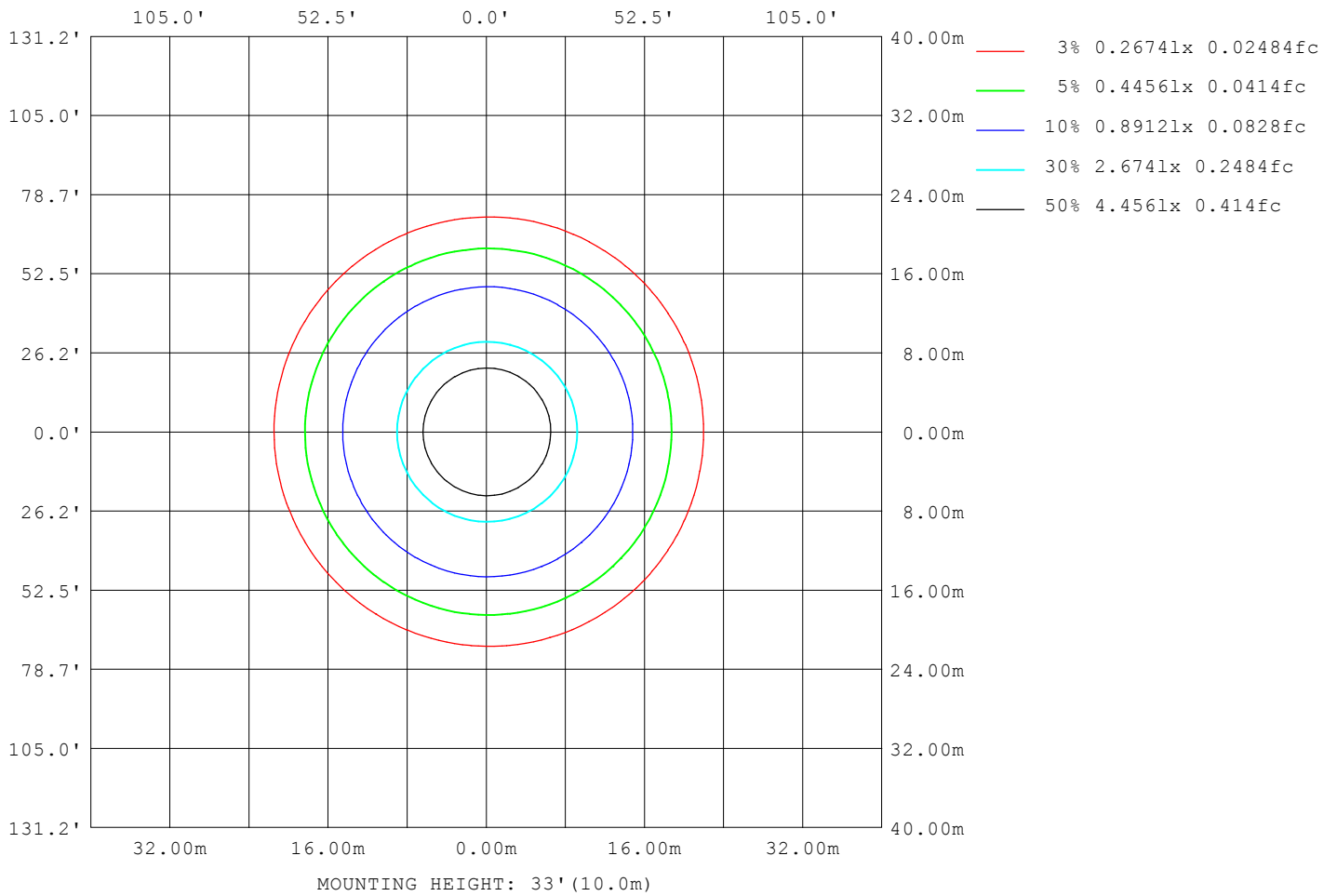
Note:The Curves indicate the illuminated area and the average illumination when the luminaire is at different distance.

C Range: 0 - 360DEG
C Interval: 22.5DEG
Test Speed: HIGH
Temperature:25.3°C
Operators:linye
Test Date:2026-03-06

γ Range: 0 - 180DEG
γ Interval: 0.5DEG
Test System:EVERFINE GO-R5000_V2 SYSTEM V2.00.459
Humidity:58.9%
Test Distance:26.000m [K=1.0000]
Remarks:

ISOLUX DIAGRAM

Test:U:119.89V I:0.3054A P:33.583W PF:0.9171 Freq:60.00Hz Lamp Flux:3160.35x1 lm		
NAME: 19寸北美吸顶灯	TYPE: 吸顶灯	WEIGHT: 1
SPEC.: /	DIM.: d=0.48	SERIAL No.: SY2500238-4#3500K
MFR.: 研发中心	SUR.: d=0.48	Shielding Angle: /



C Range: 0 - 360DEG
 C Interval: 22.5DEG
 Test Speed: HIGH
 Temperature:25.3°C
 Operators:linye
 Test Date:2026-03-06

γ Range: 0 - 180DEG
 γ Interval: 0.5DEG
 Test System:EVERFINE GO-R5000_V2 SYSTEM V2.00.459
 Humidity:58.9%
 Test Distance:26.000m [K=1.0000]
 Remarks:

LED Avg.L Report

Test:U:119.89V I:0.3054A P:33.583W PF:0.9171 Freq:60.00Hz Lamp Flux:3160.35x1 lm		
NAME: 19寸北美吸顶灯	TYPE: 吸顶灯	WEIGHT: 1
SPEC.: /	DIM.: d=0.48	SERIAL No.: SY2500238-4#3500K
MFR.: 研发中心	SUR.: d=0.48	Shielding Angle: /

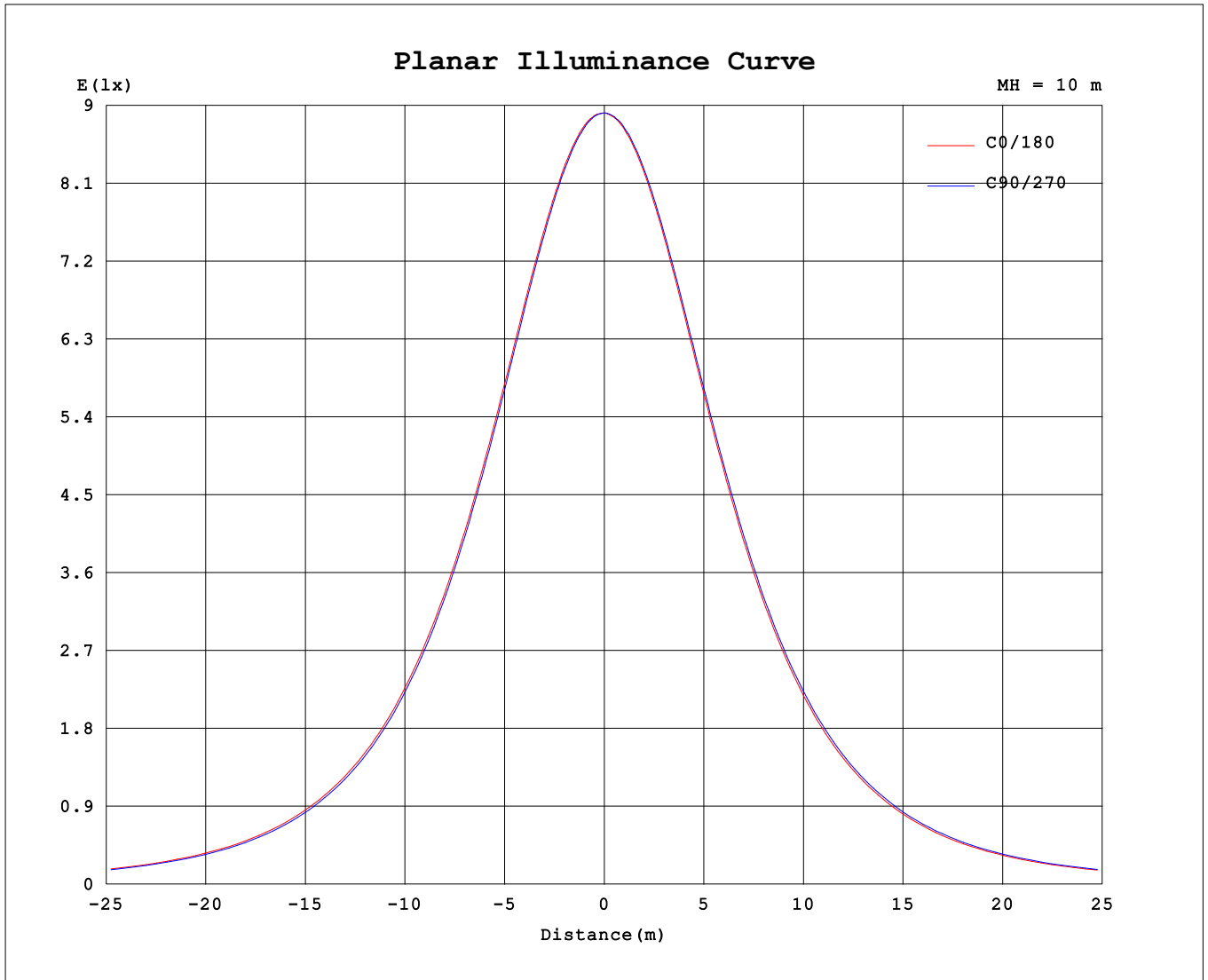
AvgL	cd/m2
L_0~180 (65) av	4822
L_0~180 (75) av	4949
L_0~180 (85) av	7522
L_90~270 (65) av	4816
L_90~270 (75) av	4922
L_90~270 (85) av	7395
L_45 (65) av	4821
L_45 (75) av	4935
L_45 (85) av	7456

Standard: GB/T 29293-2012

C Range: 0 - 360DEG
 C Interval: 22.5DEG
 Test Speed: HIGH
 Temperature:25.3℃
 Operators:linye
 Test Date:2026-03-06

γ Range: 0 - 180DEG
 γ Interval: 0.5DEG
 Test System:EVERFINE GO-R5000_V2 SYSTEM V2.00.459
 Humidity:58.9%
 Test Distance:26.000m [K=1.0000]
 Remarks:

Planar Illuminance Curve



C Range: 0 - 360DEG
 C Interval: 22.5DEG
 Test Speed: HIGH
 Temperature: 25.3°C
 Operators: linye
 Test Date: 2026-03-06

γ Range: 0 - 180DEG
 γ Interval: 0.5DEG
 Test System: EVERFINE GO-R5000_V2 SYSTEM V2.00.459
 Humidity: 58.9%
 Test Distance: 26.000m [K=1.0000]
 Remarks:

LUMINOUS DISTRIBUTION INTENSITY DATA

Test:U:119.89V I:0.3054A P:33.583W PF:0.9171 Freq:60.00Hz Lamp Flux:3160.35x1 lm		
NAME: 19寸北美吸顶灯	TYPE: 吸顶灯	WEIGHT: 1
SPEC.: /	DIM.: d=0.48	SERIAL No.: SY2500238-4#3500K
MFR.: 研发中心	SUR.: d=0.48	Shielding Angle: /

Table--1

UNIT: cd

C (DEG) \ γ (DEG)	0	22.5	45	67.5	90	112.5	135	157.5	180	202.5	225	247.5	270	292.5	315	337.5			
0	891	891	891	891	891	891	891	891	891	891	891	891	891	891	891	891			
5	890	890	889	889	888	888	887	887	887	887	887	888	889	889	889	890			
10	882	882	881	881	879	878	877	876	876	877	877	879	880	881	882	882			
15	868	868	866	865	862	861	859	858	859	859	860	862	864	866	867	868			
20	847	846	845	843	839	837	836	834	834	835	836	839	841	843	845	847			
25	818	818	816	813	810	807	805	803	803	804	806	809	811	814	817	819			
30	783	783	780	777	773	770	767	765	766	767	769	772	776	779	782	784			
35	742	741	739	735	731	726	723	721	722	723	726	729	734	738	741	743			
40	695	694	691	688	682	677	674	672	673	673	676	680	685	689	693	696			
45	642	641	638	634	628	623	619	617	617	618	622	626	631	636	640	642			
50	583	583	579	575	569	563	559	556	558	559	562	567	572	577	581	584			
55	520	520	516	511	505	499	494	492	493	494	497	502	508	514	518	521			
60	453	452	449	443	437	431	426	423	425	425	429	434	440	446	451	454			
65	383	382	379	373	367	361	356	353	354	355	359	364	370	376	381	384			
70	313	313	309	304	297	291	286	283	285	286	288	293	300	306	311	315			
75	246	245	242	236	230	224	219	217	218	219	221	225	232	238	243	246			
80	183	182	179	174	168	163	159	157	157	157	159	163	169	174	179	183			
85	129	128	125	121	116	112	110	108	109	109	110	113	117	121	126	129			
90	89.4	88.7	86.8	84.1	81.5	79.4	78.0	77.2	77.4	77.1	77.5	79.0	81.4	84.0	86.9	89.2			
95	68.2	67.7	66.6	65.1	63.7	62.6	62.0	61.6	61.5	61.2	61.3	61.9	63.3	65.0	66.8	68.3			
100	57.0	56.7	56.0	55.3	54.6	53.9	53.6	53.4	52.9	52.8	52.8	53.2	54.0	54.9	56.0	56.8			
105	50.9	50.5	50.1	49.9	49.7	49.2	49.2	49.1	48.5	48.5	48.4	48.5	49.1	49.6	50.1	50.5			
110	47.9	47.7	47.5	47.7	47.6	47.4	47.5	47.5	47.2	47.2	47.2	47.4	47.7	47.6	47.5	47.4			
115	47.1	46.9	46.8	47.2	47.3	47.1	47.2	47.3	47.3	47.4	47.5	47.6	48.0	47.6	47.4	47.1			
120	47.0	46.8	46.8	47.2	47.7	47.2	47.4	47.6	48.2	48.0	48.1	48.1	48.2	47.8	47.6	47.1			
125	47.0	46.9	46.9	47.6	47.7	47.7	47.8	48.0	48.4	48.3	48.1	48.4	48.2	47.9	47.6	47.1			
130	47.0	46.9	47.0	47.6	48.0	47.9	48.1	48.3	48.4	48.3	48.2	48.4	48.2	47.9	47.6	47.2			
135	47.0	46.9	47.0	47.6	48.0	47.9	48.0	48.3	48.4	48.3	48.2	48.4	48.2	47.9	47.6	47.3			
140	47.1	46.9	47.0	47.6	48.0	47.9	48.0	48.3	48.2	48.3	48.2	48.2	48.2	48.0	47.6	47.3			
145	47.5	47.2	47.3	47.7	48.0	47.9	48.1	48.3	48.1	48.5	48.2	48.2	48.2	48.0	47.8	47.7			
150	48.2	48.3	47.9	48.4	48.5	48.0	48.3	48.7	48.1	48.5	48.2	48.2	48.4	48.3	48.6	48.4			
155	48.3	48.4	48.3	48.6	48.6	48.2	49.0	49.1	48.5	48.7	48.6	48.5	48.4	48.6	48.7	48.8			
160	45.9	45.8	45.7	45.5	45.9	46.3	47.0	47.5	46.9	46.9	47.4	47.7	47.6	47.6	47.5	47.4			
165	43.9	43.6	43.2	43.2	43.7	44.4	44.8	45.5	44.4	44.5	44.8	45.3	45.5	45.5	45.4	45.2			
170	38.9	38.8	39.4	39.7	40.3	40.1	40.8	41.3	40.8	40.8	40.8	41.0	41.3	40.9	40.6	39.9			
175	46.0	46.4	46.5	46.4	46.4	46.6	47.0	46.9	47.0	46.9	46.9	46.9	46.9	47.6	47.2	46.5			
180	46.9	47.0	46.9	46.8	46.7	46.9	47.1	46.9	46.9	46.9	46.9	46.9	46.9	46.7	46.9	47.1			

C Range: 0 - 360DEG
 C Interval: 22.5DEG
 Test Speed: HIGH
 Temperature:25.3℃
 Operators:linye
 Test Date:2026-03-06

γ Range: 0 - 180DEG
 γ Interval: 0.5DEG
 Test System:EVERFINE GO-R5000_V2 SYSTEM V2.00.459
 Humidity:58.9%
 Test Distance:26.000m [K=1.0000]
 Remarks: