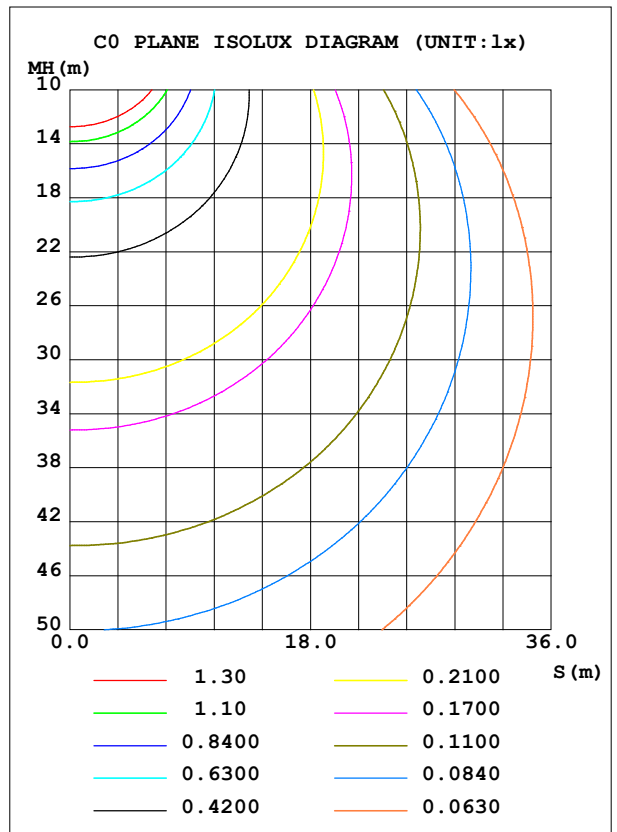
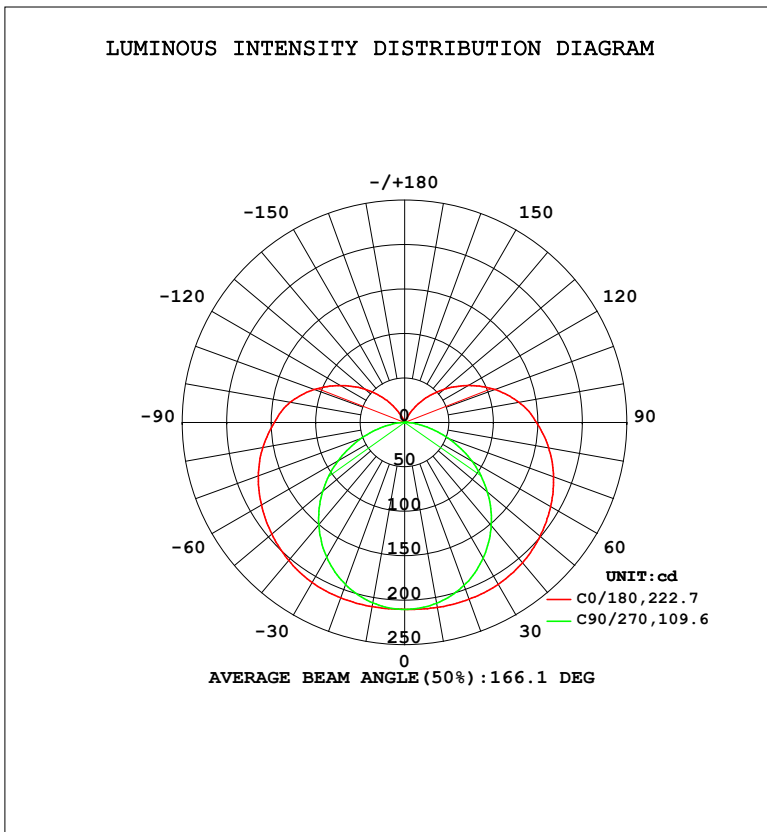


LUMINAIRE PHOTOMETRIC TEST REPORT

Test:U:120.2V I:0.1204A P:14.37W PF:0.9928 Freq:60.01Hz Lamp Flux:1176.17x1 lm		
NAME: VN25-16-15S-952C5-MVTD-BN 3000K	TYPE:	WEIGHT:
SPEC.:	DIM.:	SERIAL No.:
MFR.: FOSHAN LEDKEY LIGHTING CO.,LTD.	SUR.:	Shielding Angle:

DATA OF LAMP		PHOTOMETRIC DATA				Eff: 81.86 lm/W
MODEL	VN25-16-15S-952C5-MVTD-BN	Imax (cd)	211.7	S/MH (C0/180)	1.50	
NOMINAL POWER (W)	15	LOR (%)	100.0	S/MH (C90/270)	1.24	
RATED VOLTAGE (V)	120	TOTAL FLUX (lm)	1176.2	η UP, DN (C0-180)	11.3, 38.9	
NOMINAL FLUX (lm)	1176.17	CIE CLASS	SEMI-D.	η UP, DN (C180-360)	11.3, 38.6	
LAMPS INSIDE	1	η up (%)	22.6	CIBSE SHR NOM	1.50	
TEST VOLTAGE (V)	120	η down (%)	77.4	CIBSE SHR MAX	1.55	



C Range: 0 - 360DEG
 C Interval: 22.5DEG
 Test Speed: HIGH
 Temperature: 25.2 °C
 Operators: Dano
 Test Date: 2022-09-07

γ Range: 0 - 180DEG
 γ Interval: 1.0DEG
 Test System: EVERFINE GO-R5000_V2 SYSTEM V2.00.459
 Humidity: 55.3%
 Test Distance: 2.900m [K=0.8817]
 Remarks:

ZONAL FLUX DIAGRAM

ZONAL FLUX DIAGRAM:

γ	C0	C45	C90	C135	C180	C225	C270	C315	γ	Φ zone	Φ total	%lum, lamp
10	211.3	209.2	206.5	208.4	210.3	208.2	206.1	208.7	0- 10	19.99	19.99	1.7,1.7
20	211.7	204.2	195.2	202.6	209.9	202.4	194.2	203.3	10- 20	58.35	78.34	6.66,6.66
30	210.3	195.3	176.5	192.8	208.1	192.7	175.2	193.8	20- 30	91.67	170.0	14.5,14.5
40	206.2	182.5	151.6	179.4	202.9	179.4	150.3	180.7	30- 40	116.9	287.0	24.4,24.4
50	199.0	167.0	121.5	163.0	195.2	163.3	120.5	164.6	40- 50	132.1	419.0	35.6,35.6
60	189.6	149.8	87.77	145.3	186.0	145.9	86.68	146.8	50- 60	136.6	555.6	47.2,47.2
70	178.3	132.4	52.30	127.8	175.2	128.9	51.45	129.4	60- 70	131.6	687.2	58.4,58.4
80	164.5	115.8	20.00	111.2	162.0	112.7	19.31	112.7	70- 80	119.6	806.8	68.6,68.6
90	148.3	99.47	1.237	95.49	146.7	97.07	1.153	96.63	80- 90	103.8	910.7	77.4,77.4
100	130.7	83.87	1.447	80.92	130.9	82.71	1.336	81.28	90-100	88.89	999.6	85,85
110	108.4	65.83	1.385	62.47	108.4	64.34	1.341	63.54	100-110	71.01	1071	91,91
120	83.46	47.34	1.248	44.14	83.42	45.91	1.209	45.50	110-120	50.86	1121	95.3,95.3
130	58.32	29.21	1.065	26.75	58.26	28.42	1.044	28.40	120-130	31.72	1153	98,98
140	34.40	13.24	0.8020	10.72	34.25	12.88	0.8623	11.76	130-140	16.37	1170	99.4,99.4
150	12.60	0.6165	0.5669	0.4560	12.26	1.227	0.6770	0.6736	140-150	5.800	1175	99.9,99.9
160	0.2761	0.3719	0.4416	0.3269	0.3109	0.3856	0.5457	0.5024	150-160	0.7051	1176	100,100
170	0.2662	0.3330	0.3756	0.3115	0.3091	0.3405	0.4451	0.4315	160-170	0.1054	1176	100,100
180	0.3049	0.3272	0.3568	0.3368	0.3015	0.3102	0.3477	0.3478	170-180	0.0329	1176	100,100
DEG	LUMINOUS INTENSITY:cd									UNIT:lm		

Conical surface Flux(90deg): 351.77 lm

%lum = 29.9%
 %lamp = 29.9%

Conical surface Flux(120deg): 555.62 lm

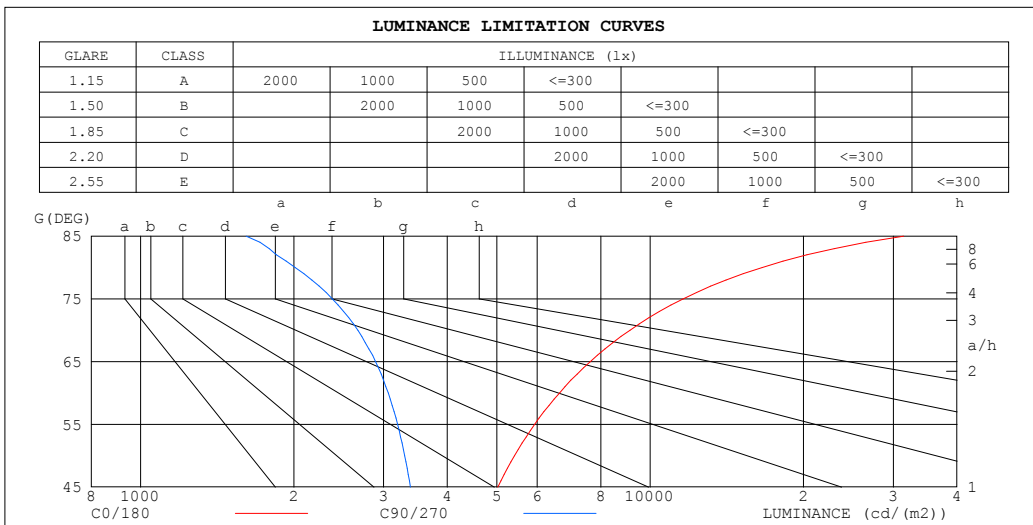
%lum = 47.2%
 %lamp = 47.2%

C Range: 0 - 360DEG
 C Interval: 22.5DEG
 Test Speed: HIGH
 Temperature:25.2℃
 Operators:Dano
 Test Date:2022-09-07

γ Range: 0 - 180DEG
 γ Interval: 1.0DEG
 Test System:EVERFINE GO-R5000_V2 SYSTEM V2.00.459
 Humidity:55.3%
 Test Distance:2.900m [K=0.8817]
 Remarks:

LUMINANCE LIMITATION CURVES

Test:U:120.2V I:0.1204A P:14.37W PF:0.9928 Freq:60.01Hz Lamp Flux:1176.17x1 lm		
NAME: VN25-16-15S-952C5-MVTD-BN 3000K	TYPE:	WEIGHT:
SPEC.:	DIM.:	SERIAL No.:
MFR.: FOSHAN LEDKEY LIGHTING CO.,LTD.	SUR.:	Shielding Angle:



LUMINANCE cd/(m2)		
G (DEG)	C0/180	C90/270
85	31448	1611
80	16583	2010
75	11612	2378
70	9125	2669
65	7630	2891
60	6637	3063
55	5937	3194
50	5420	3300
45	5024	3386

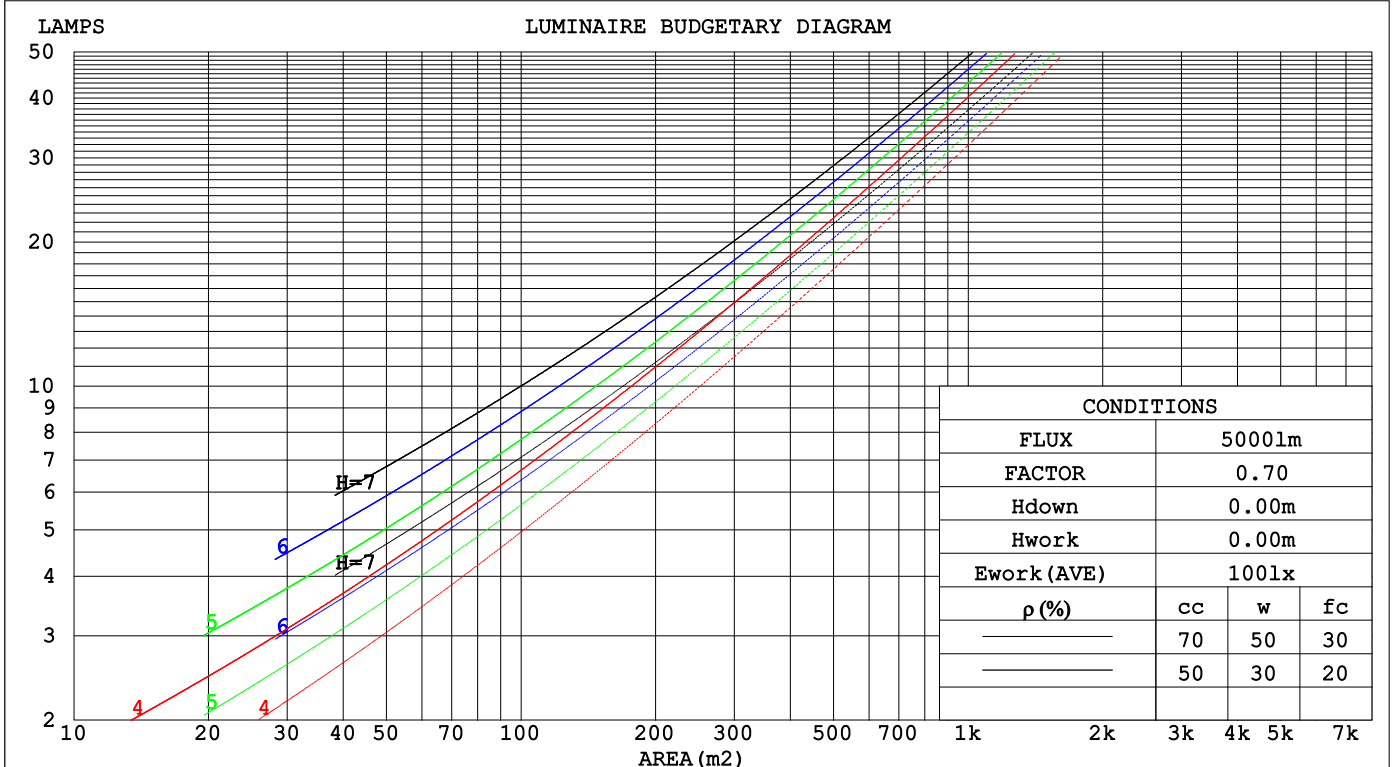
C Range: 0 - 360DEG
 C Interval: 22.5DEG
 Test Speed: HIGH
 Temperature: 25.2°C
 Operators: Dano
 Test Date: 2022-09-07

γ Range: 0 - 180DEG
 γ Interval: 1.0DEG
 Test System: EVERFINE GO-R5000_V2 SYSTEM V2.00.459
 Humidity: 55.3%
 Test Distance: 2.900m [K=0.8817]
 Remarks:

CU AND LUMINAIRE BUDGETARY ESTIMATE DIAGRAM

Test:U:120.2V I:0.1204A P:14.37W PF:0.9928 Freq:60.01Hz Lamp Flux:1176.17x1 lm		
NAME: VN25-16-15S-952C5-MVTD-BN 3000K	TYPE:	WEIGHT:
SPEC.:	DIM.:	SERIAL No.:
MFR.: FOSHAN LEDKEY LIGHTING CO.,LTD.	SUR.:	Shielding Angle:

pcc	80%			70%			50%			30%			10%			0
pw	50%	30%	10%	50%	30%	10%	50%	30%	10%	50%	30%	10%	50%	30%	10%	0
pfc	20%			20%			20%			20%			20%			0
RCR	RCR:Room Cavity Ratio						Coefficients of Utilization(CU)									
0.0	1.14	1.14	1.14	1.08	1.08	1.08	.99	.99	.99	.90	.90	.90	.81	.81	.81	.77
1.0	.94	.88	.83	.89	.84	.79	.80	.76	.73	.73	.69	.66	.65	.63	.61	.57
2.0	.80	.71	.65	.76	.68	.62	.68	.62	.57	.62	.57	.52	.55	.51	.48	.44
3.0	.69	.59	.52	.65	.57	.50	.59	.52	.46	.53	.48	.43	.48	.43	.39	.36
4.0	.60	.51	.43	.57	.48	.42	.52	.44	.39	.47	.41	.36	.42	.37	.33	.30
5.0	.53	.44	.36	.51	.42	.35	.46	.39	.33	.42	.35	.30	.38	.32	.28	.25
6.0	.48	.38	.31	.45	.37	.30	.41	.34	.28	.37	.31	.26	.34	.28	.24	.22
7.0	.43	.34	.27	.41	.32	.26	.37	.30	.25	.34	.28	.23	.31	.25	.21	.19
8.0	.39	.30	.24	.37	.29	.23	.34	.27	.22	.31	.25	.20	.28	.23	.19	.17
9.0	.35	.27	.21	.34	.26	.21	.31	.24	.19	.28	.22	.18	.26	.21	.17	.15
10.0	.33	.24	.19	.31	.24	.19	.29	.22	.17	.26	.20	.16	.24	.19	.15	.13



C Range: 0 - 360DEG
 C Interval: 22.5DEG
 Test Speed: HIGH
 Temperature:25.2°C
 Operators:Dano
 Test Date:2022-09-07

γ Range: 0 - 180DEG
 γ Interval: 1.0DEG
 Test System:EVERFINE GO-R5000_V2 SYSTEM V2.00.459
 Humidity:55.3%
 Test Distance:2.900m [K=0.8817]
 Remarks:

WEC AND CCEC

Test:U:120.2V I:0.1204A P:14.37W PF:0.9928 Freq:60.01Hz Lamp Flux:1176.17x1 lm		
NAME: VN25-16-15S-952C5-MVTD-BN 3000K	TYPE:	WEIGHT:
SPEC.:	DIM.:	SERIAL No.:
MFR.: FOSHAN LEDKEY LIGHTING CO.,LTD.	SUR.:	Shielding Angle:

ρ _{cc}	80%			70%			50%			30%			10%			0
ρ _w	50%	30%	10%	50%	30%	10%	50%	30%	10%	50%	30%	10%	50%	30%	10%	0
ρ _{fc}	20%			20%			20%			20%			20%			0
RCR	RCR:Room Cavity Ratio						Wall Exitance Coefficients(WEC)									
0.0																
1.0	.404	.230	.073	.390	.223	.071	.364	.209	.067	.339	.196	.063	.317	.184	.059	
2.0	.344	.189	.058	.331	.183	.056	.307	.171	.053	.285	.160	.050	.265	.150	.047	
3.0	.303	.161	.048	.292	.156	.047	.270	.146	.044	.250	.137	.042	.231	.128	.040	
4.0	.271	.141	.041	.261	.137	.040	.241	.128	.038	.223	.120	.036	.206	.112	.034	
5.0	.246	.125	.036	.236	.121	.035	.218	.114	.033	.201	.106	.032	.186	.099	.030	
6.0	.224	.113	.032	.216	.109	.031	.199	.102	.030	.184	.096	.028	.169	.089	.026	
7.0	.207	.102	.029	.199	.099	.028	.183	.093	.027	.169	.087	.025	.156	.081	.024	
8.0	.191	.093	.026	.184	.091	.026	.170	.085	.024	.157	.079	.023	.145	.074	.022	
9.0	.178	.086	.024	.171	.083	.023	.158	.078	.022	.146	.073	.021	.135	.068	.020	
10.0	.166	.080	.022	.160	.077	.022	.148	.073	.020	.137	.068	.019	.126	.064	.018	

ρ _{cc}	80%			70%			50%			30%			10%			0
ρ _w	50%	30%	10%	50%	30%	10%	50%	30%	10%	50%	30%	10%	50%	30%	10%	0
ρ _{fc}	20%			20%			20%			20%			20%			0
RCR	RCR:Room Cavity Ratio						Ceiling Cavity Exitance Coefficients(CCEC)									
0.0	.362	.362	.362	.310	.310	.310	.211	.211	.211	.121	.121	.121	.039	.039	.039	
1.0	.360	.329	.300	.308	.282	.258	.211	.194	.179	.121	.112	.104	.039	.036	.034	
2.0	.354	.306	.266	.303	.264	.230	.208	.182	.161	.120	.106	.094	.038	.034	.031	
3.0	.346	.290	.245	.297	.250	.213	.204	.174	.149	.118	.102	.088	.038	.033	.029	
4.0	.339	.278	.231	.291	.240	.201	.200	.167	.141	.116	.098	.084	.037	.032	.028	
5.0	.331	.268	.222	.284	.232	.193	.196	.162	.136	.113	.095	.081	.037	.031	.027	
6.0	.323	.260	.215	.278	.225	.187	.192	.158	.132	.111	.093	.079	.036	.030	.026	
7.0	.316	.254	.210	.272	.220	.183	.188	.154	.130	.109	.091	.077	.035	.030	.026	
8.0	.309	.248	.206	.266	.215	.180	.184	.151	.128	.107	.089	.076	.035	.029	.025	
9.0	.303	.244	.203	.261	.211	.177	.181	.149	.126	.105	.088	.075	.034	.029	.025	
10.0	.297	.239	.201	.256	.208	.175	.178	.146	.125	.104	.086	.074	.034	.028	.025	

C Range: 0 - 360DEG
 C Interval: 22.5DEG
 Test Speed: HIGH
 Temperature:25.2℃
 Operators:Dano
 Test Date:2022-09-07

γ Range: 0 - 180DEG
 γ Interval: 1.0DEG
 Test System:EVERFINE GO-R5000_V2 SYSTEM V2.00.459
 Humidity:55.3%
 Test Distance:2.900m [K=0.8817]
 Remarks:

UGR(Unified Glare Rating) Table

Test:U:120.2V I:0.1204A P:14.37W PF:0.9928 Freq:60.01Hz Lamp Flux:1176.17x1 lm		
NAME: VN25-16-15S-952C5-MVTD-BN 3000K	TYPE:	WEIGHT:
SPEC.:	DIM.:	SERIAL No.:
MFR.: FOSHAN LEDKEY LIGHTING CO.,LTD.	SUR.:	Shielding Angle:

ceiling/cavity	0.7	0.7	0.5	0.5	0.3	0.7	0.7	0.5	0.5	0.3
walls	0.5	0.3	0.5	0.3	0.3	0.5	0.3	0.5	0.3	0.3
working plane	0.2	0.2	0.2	0.2	0.2	0.2	0.2	0.2	0.2	0.2

Room dimensions	Viewed crosswise					Viewed endwise				
x = 2H y = 2H	18.3	19.7	18.9	20.2	20.9	15.2	16.6	15.8	17.2	17.8
3H	21.3	22.6	21.9	23.2	23.9	16.7	18.0	17.3	18.6	19.3
4H	23.0	24.2	23.6	24.8	25.5	17.4	18.5	18.0	19.2	19.9
6H	24.9	26.0	25.5	26.6	27.4	17.8	18.9	18.4	19.6	20.3
8H	25.9	27.0	26.5	27.6	28.4	17.9	19.0	18.6	19.7	20.4
12H	27.1	28.1	27.7	28.8	29.5	18.0	19.1	18.7	19.7	20.5
4H 2H	18.9	20.0	19.5	20.7	21.4	16.7	17.9	17.4	18.5	19.3
3H	22.1	23.2	22.8	23.8	24.6	18.6	19.6	19.2	20.3	21.0
4H	24.0	25.0	24.7	25.7	26.5	19.4	20.3	20.1	21.0	21.8
6H	26.1	27.0	26.8	27.7	28.5	20.1	20.9	20.8	21.6	22.5
8H	27.3	28.1	28.0	28.8	29.6	20.3	21.1	21.0	21.8	22.7
12H	28.6	29.3	29.3	30.1	30.9	20.5	21.2	21.2	22.0	22.8
8H 4H	24.4	25.2	25.1	25.9	26.7	20.9	21.7	21.6	22.4	23.3
6H	26.8	27.5	27.5	28.2	29.1	22.0	22.7	22.8	23.5	24.3
8H	28.2	28.8	28.9	29.5	30.5	22.5	23.1	23.3	23.9	24.8
12H	29.8	30.3	30.5	31.1	32.0	22.9	23.5	23.7	24.3	25.2
12H 4H	24.4	25.1	25.1	25.9	26.7	21.4	22.1	22.1	22.9	23.7
6H	26.9	27.5	27.7	28.3	29.2	22.8	23.4	23.6	24.2	25.1
8H	28.4	28.9	29.2	29.7	30.7	23.6	24.1	24.3	24.9	25.8

Variations with the observer position at spacings(CIE Pub.117):		
S = 1.0H	+ 0.1 / - 0.1	+ 0.1 / - 0.1
1.5H	+ 0.2 / - 0.3	+ 0.2 / - 0.3
2.0H	+ 0.3 / - 0.4	+ 0.3 / - 0.4

CIE Pub.117, 1176 lm Total Lamp Luminous Flux Corrected (8log(F/F0) = 0.6)
Area: 0.0572555 m2

C Range: 0 - 360DEG
C Interval: 22.5DEG
Test Speed: HIGH
Temperature:25.2℃
Operators:Dano
Test Date:2022-09-07

γ Range: 0 - 180DEG
γ Interval: 1.0DEG
Test System:EVERFINE GO-R5000_V2 SYSTEM V2.00.459
Humidity:55.3%
Test Distance:2.900m [K=0.8817]
Remarks:

UTILIZATION FACTORS TABLE

Test:U:120.2V I:0.1204A P:14.37W PF:0.9928 Freq:60.01Hz Lamp Flux:1176.17x1 lm		
NAME: VN25-16-15S-952C5-MVTD-BN 3000K	TYPE:	WEIGHT:
SPEC.:	DIM.:	SERIAL No.:
MFR.: FOSHAN LEDKEY LIGHTING CO.,LTD.	SUR.:	Shielding Angle:

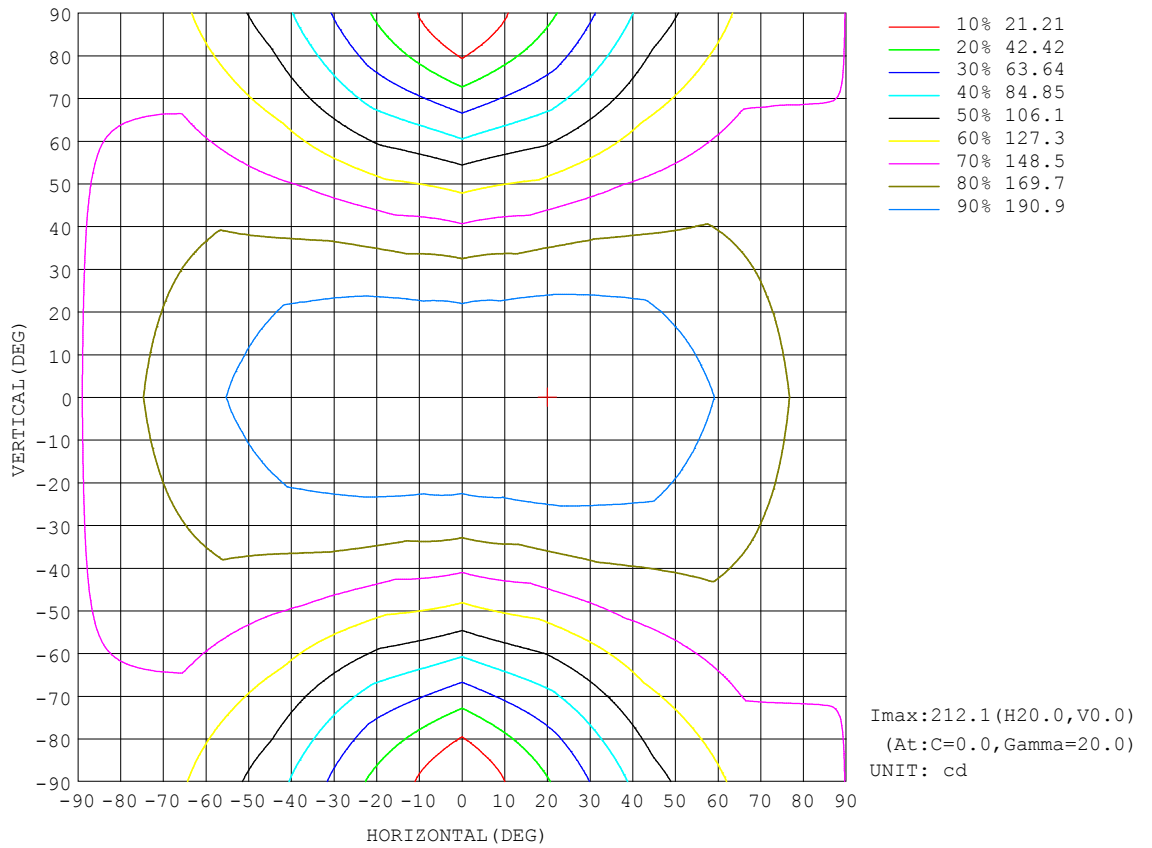
REFLECTANCE										
Ceiling	0.8	0.8	0.8	0.7	0.7	0.7	0.5	0.5	0.5	0
Walls	0.7	0.5	0.3	0.7	0.5	0.3	0.7	0.5	0.3	0
Working plane	0.2	0.2	0.2	0.2	0.2	0.2	0.2	0.2	0.2	0
ROOM INDEX	UTILIZATION FACTORS (PERCENT) $k(RI) \times RCR = 5$									
k = 0.60	45	32	25	44	32	25	42	31	24	18
0.80	54	41	32	52	40	32	49	38	31	23
1.00	62	48	39	59	47	39	56	47	37	28
1.25	68	55	46	66	54	45	61	51	44	33
1.50	74	61	52	71	59	50	65	56	48	37
2.00	81	69	60	78	67	59	71	63	56	43
2.50	86	75	66	82	72	64	75	67	61	47
3.00	90	79	71	86	77	69	78	71	65	50
4.00	94	86	79	90	82	76	82	76	71	55
5.00	98	90	84	93	86	81	85	80	75	58
ROOM INDEX	UF(total)									Direct
According to DIN EN 13032-2 2004			Suspended				SHRNOM = 1.25			

C Range: 0 - 360DEG
 C Interval: 22.5DEG
 Test Speed: HIGH
 Temperature:25.2°C
 Operators:Dano
 Test Date:2022-09-07

γ Range: 0 - 180DEG
 γ Interval: 1.0DEG
 Test System:EVERFINE GO-R5000_V2 SYSTEM V2.00.459
 Humidity:55.3%
 Test Distance:2.900m [K=0.8817]
 Remarks:

ISOCANDELA DIAGRAM

Test:U:120.2V I:0.1204A P:14.37W PF:0.9928 Freq:60.01Hz Lamp Flux:1176.17x1 lm		
NAME: VN25-16-15S-952C5-MVTD-BN 3000K	TYPE:	WEIGHT:
SPEC.:	DIM.:	SERIAL No.:
MFR.: FOSHAN LEDKEY LIGHTING CO.,LTD.	SUR.:	Shielding Angle:

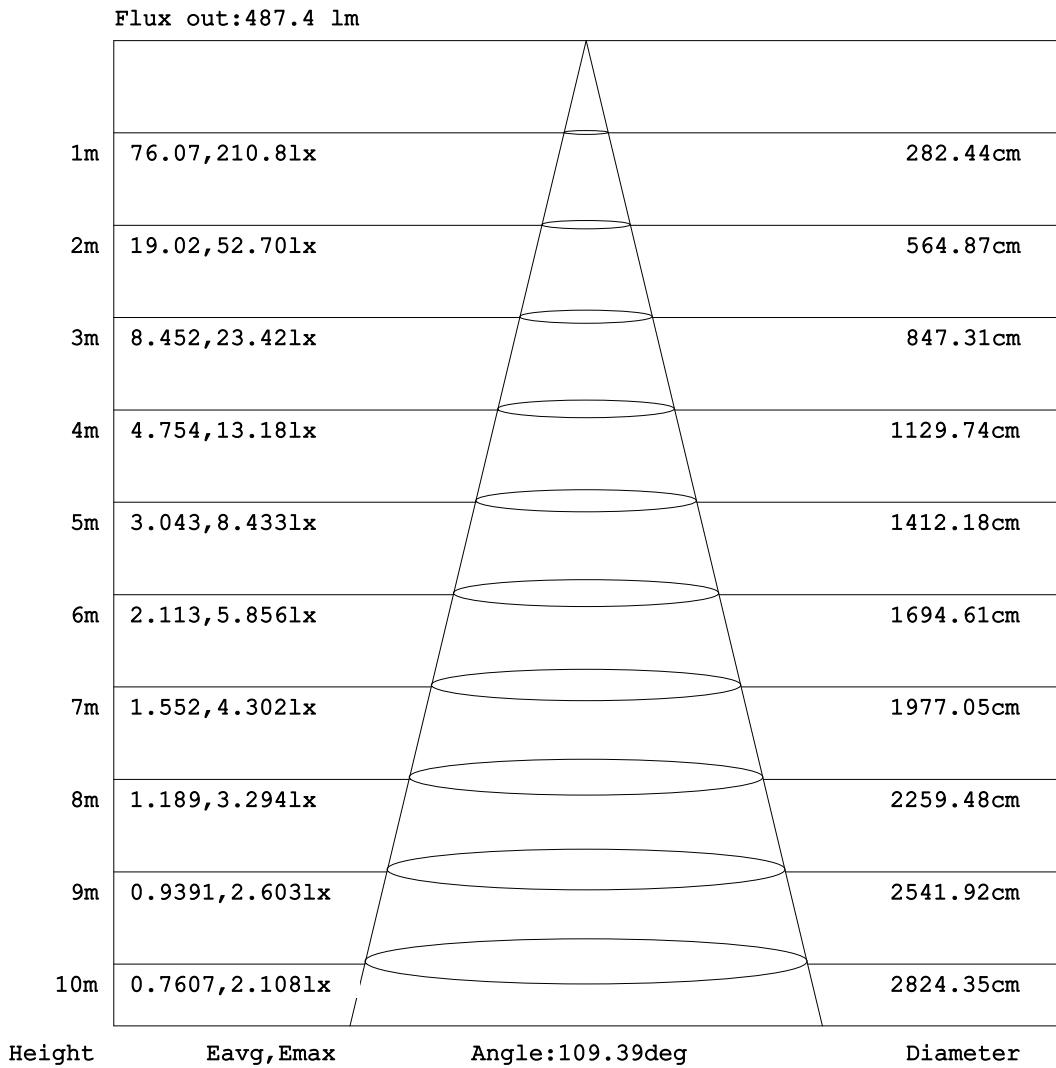


C Range: 0 - 360DEG
C Interval: 22.5DEG
Test Speed: HIGH
Temperature:25.2°C
Operators:Dano
Test Date:2022-09-07

γ Range: 0 - 180DEG
γ Interval: 1.0DEG
Test System:EVERFINE GO-R5000_V2 SYSTEM V2.00.459
Humidity:55.3%
Test Distance:2.900m [K=0.8817]
Remarks:

AAI Figure

Test:U:120.2V I:0.1204A P:14.37W PF:0.9928 Freq:60.01Hz Lamp Flux:1176.17x1 lm		
NAME: VN25-16-15S-952C5-MVTD-BN 3000K	TYPE:	WEIGHT:
SPEC.:	DIM.:	SERIAL No.:
MFR.: FOSHAN LEDKEY LIGHTING CO.,LTD.	SUR.:	Shielding Angle:



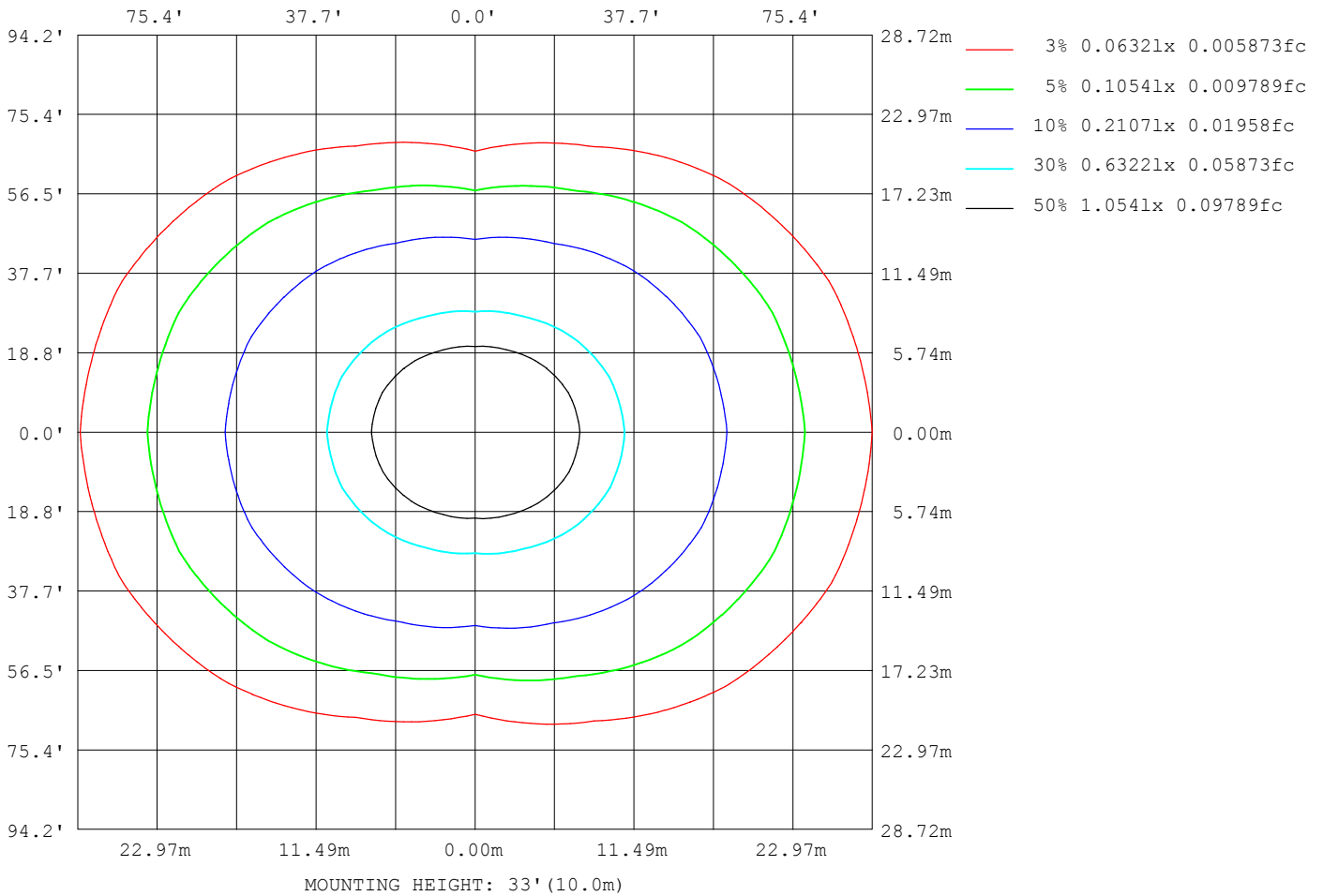
Note:The Curves indicate the illuminated area and the average illumination when the luminaire is at different distance.

C Range: 0 - 360DEG
C Interval: 22.5DEG
Test Speed: HIGH
Temperature:25.2℃
Operators:Dano
Test Date:2022-09-07

γ Range: 0 - 180DEG
γ Interval: 1.0DEG
Test System:EVERFINE GO-R5000_V2 SYSTEM V2.00.459
Humidity:55.3%
Test Distance:2.900m [K=0.8817]
Remarks:

ISOLUX DIAGRAM

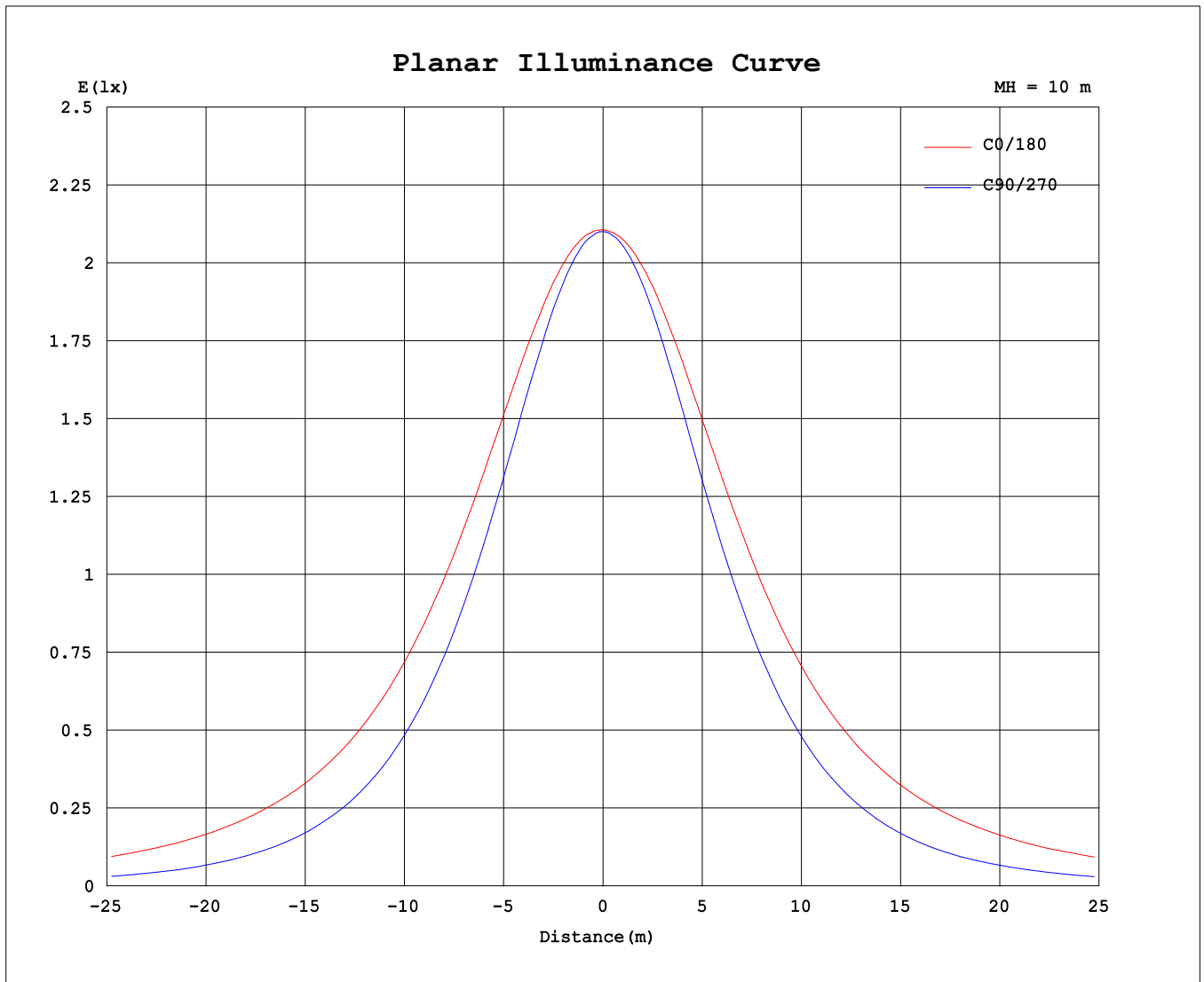
Test:U:120.2V I:0.1204A P:14.37W PF:0.9928 Freq:60.01Hz Lamp Flux:1176.17x1 lm		
NAME: VN25-16-15S-952C5-MVTD-BN 3000K	TYPE:	WEIGHT:
SPEC.:	DIM.:	SERIAL No.:
MFR.: FOSHAN LEDKEY LIGHTING CO.,LTD.	SUR.:	Shielding Angle:



C Range: 0 - 360DEG
C Interval: 22.5DEG
Test Speed: HIGH
Temperature:25.2°C
Operators:Dano
Test Date:2022-09-07

γ Range: 0 - 180DEG
γ Interval: 1.0DEG
Test System:EVERFINE GO-R5000_V2 SYSTEM V2.00.459
Humidity:55.3%
Test Distance:2.900m [K=0.8817]
Remarks:

Planar Illuminance Curve



C Range: 0 - 360DEG
C Interval: 22.5DEG
Test Speed: HIGH
Temperature: 25.2°C
Operators: Dano
Test Date: 2022-09-07

γ Range: 0 - 180DEG
γ Interval: 1.0DEG
Test System: EVERFINE GO-R5000_V2 SYSTEM V2.00.459
Humidity: 55.3%
Test Distance: 2.900m [K=0.8817]
Remarks:

LUMINOUS DISTRIBUTION INTENSITY DATA

Test:U:120.2V I:0.1204A P:14.37W PF:0.9928 Freq:60.01Hz Lamp Flux:1176.17x1 lm		
NAME: VN25-16-15S-952C5-MVTD-BN 3000K	TYPE:	WEIGHT:
SPEC.:	DIM.:	SERIAL No.:
MFR.: FOSHAN LEDKEY LIGHTING CO.,LTD.	SUR.:	Shielding Angle:

Table--1

UNIT: cd

C (DEG) γ (DEG)	0	22.5	45	67.5	90	112.5	135	157.5	180	202.5	225	247.5	270	292.5	315	337.5			
0	210	210	210	210	210	210	210	210	210	210	210	210	210	210	210	210			
5	211	211	210	210	209	210	210	210	210	210	210	209	209	209	210	211			
10	211	211	209	208	206	207	208	210	210	210	208	207	206	207	209	211			
15	212	210	207	204	202	203	206	209	210	209	206	203	201	203	206	210			
20	212	209	204	198	195	198	203	208	210	207	202	197	194	197	203	209			
25	211	208	200	191	187	190	198	206	209	206	198	190	186	190	199	208			
30	210	206	195	183	177	182	193	203	208	203	193	181	175	181	194	205			
35	209	203	189	173	165	172	187	200	206	200	187	171	164	172	188	202			
40	206	199	183	162	152	161	179	196	203	196	179	160	150	160	181	198			
45	203	195	175	151	137	149	172	192	199	191	172	148	136	148	173	194			
50	199	190	167	138	122	136	163	186	195	186	163	136	120	136	165	189			
55	195	185	158	125	105	122	154	181	191	181	155	123	104	122	156	183			
60	190	179	150	112	87.8	109	145	175	186	175	146	109	86.7	109	147	177			
65	184	173	141	98.3	70.0	95.0	136	169	181	169	137	95.7	69.1	95.0	138	171			
70	178	166	132	85.4	52.3	81.7	128	162	175	163	129	82.8	51.4	82.1	129	165			
75	172	159	124	73.5	35.3	69.4	119	156	169	156	121	71.0	34.5	70.0	121	158			
80	165	152	116	62.9	20.0	58.7	111	148	162	149	113	60.7	19.3	59.4	113	150			
85	157	144	108	53.7	8.05	49.6	103	140	154	141	105	51.8	7.29	50.3	105	142			
90	148	136	99.5	46.1	1.24	42.2	95.5	133	147	134	97.1	44.5	1.15	42.9	96.6	134			
95	141	128	92.4	40.4	1.39	37.0	89.1	126	140	127	90.8	39.3	1.26	37.4	89.7	127			
100	131	119	83.9	34.4	1.45	31.0	80.9	117	131	118	82.7	33.3	1.34	31.6	81.3	117			
105	120	108	75.0	28.6	1.44	25.2	71.9	107	120	108	73.7	27.4	1.37	26.0	72.6	107			
110	108	97.4	65.8	23.1	1.38	19.7	62.5	95.3	108	96.6	64.3	21.8	1.34	20.7	63.5	96.4			
115	96.1	85.9	56.5	17.7	1.32	14.5	53.2	83.7	96.1	85.0	55.1	16.4	1.28	15.6	54.4	84.9			
120	83.5	74.1	47.3	12.6	1.25	9.45	44.1	71.9	83.4	73.2	45.9	11.2	1.21	10.7	45.5	73.3			
125	70.8	62.4	38.4	7.73	1.16	4.85	35.3	60.3	70.8	61.5	37.0	6.36	1.13	5.92	36.9	61.7			
130	58.3	50.8	29.2	3.34	1.06	1.32	26.7	48.8	58.3	50.1	28.4	2.22	1.04	2.10	28.4	50.3			
135	46.1	39.7	21.1	1.20	0.94	0.96	18.5	37.7	46.0	39.0	20.3	1.13	0.96	1.13	20.0	39.2			
140	34.4	28.9	13.2	0.92	0.80	0.73	10.7	27.0	34.2	28.6	12.9	0.90	0.86	0.88	11.8	28.3			
145	23.2	18.0	6.01	0.71	0.68	0.62	3.62	16.8	22.9	19.0	6.50	0.75	0.76	0.75	3.38	17.4			
150	12.6	8.93	0.62	0.57	0.57	0.52	0.46	7.30	12.3	9.95	1.23	0.65	0.68	0.66	0.67	7.08			
155	3.13	0.88	0.44	0.49	0.49	0.45	0.36	0.29	2.65	1.78	0.45	0.56	0.61	0.60	0.54	0.52			
160	0.28	0.31	0.37	0.43	0.44	0.40	0.33	0.26	0.31	0.31	0.39	0.48	0.55	0.55	0.50	0.42			
165	0.26	0.29	0.34	0.39	0.40	0.37	0.31	0.27	0.30	0.30	0.36	0.43	0.48	0.49	0.46	0.40			
170	0.27	0.29	0.33	0.36	0.38	0.35	0.31	0.28	0.31	0.31	0.34	0.40	0.45	0.46	0.43	0.39			
175	0.29	0.31	0.33	0.35	0.36	0.34	0.32	0.30	0.31	0.31	0.33	0.36	0.39	0.41	0.39	0.35			
180	0.30	0.31	0.33	0.35	0.36	0.35	0.34	0.31	0.30	0.30	0.31	0.33	0.35	0.35	0.35	0.33			

C Range: 0 - 360DEG
 C Interval: 22.5DEG
 Test Speed: HIGH
 Temperature:25.2℃
 Operators:Dano
 Test Date:2022-09-07

γ Range: 0 - 180DEG
 γ Interval: 1.0DEG
 Test System:EVERFINE GO-R5000_V2 SYSTEM V2.00.459
 Humidity:55.3%
 Test Distance:2.900m [K=0.8817]
 Remarks: