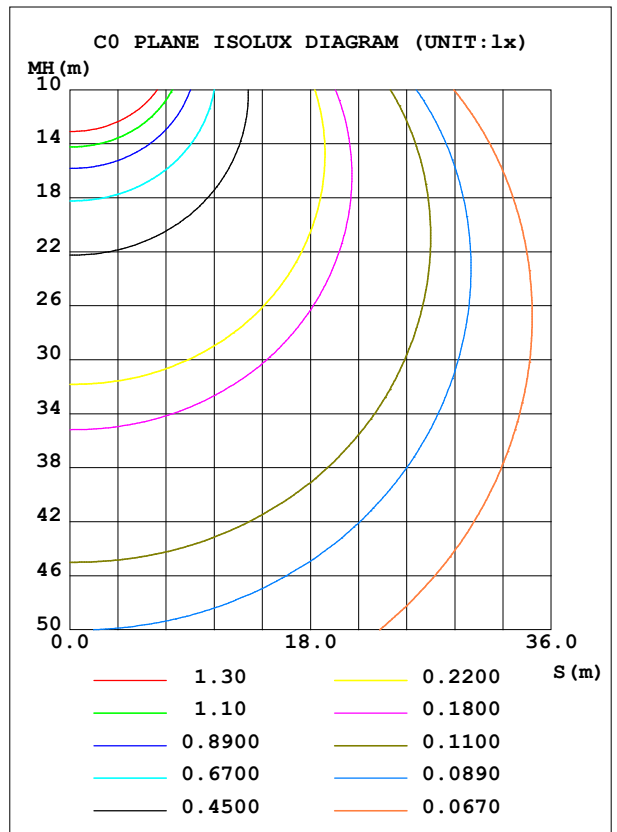
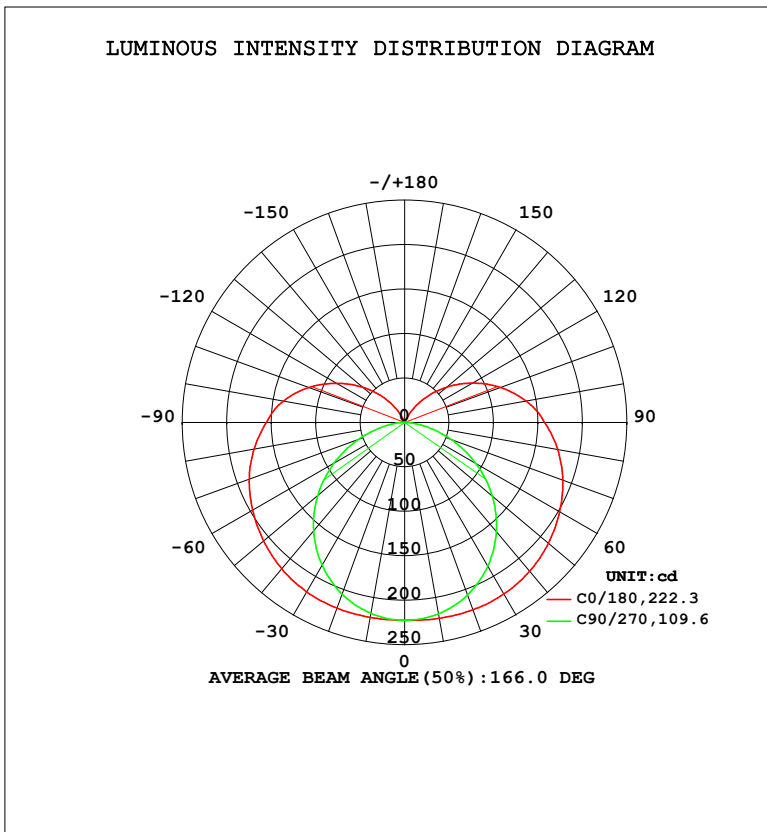


LUMINAIRE PHOTOMETRIC TEST REPORT

Test:U:120.2V I:0.1201A P:14.33W PF:0.9928 Freq:60.01Hz Lamp Flux:1247.41x1 lm		
NAME: VN25-16-15S-952C5-MVTD-BN 3500K	TYPE:	WEIGHT:
SPEC.:	DIM.:	SERIAL No.:
MFR.: FOSHAN LEDKEY LIGHTING CO.,LTD.	SUR.:	Shielding Angle:

DATA OF LAMP		PHOTOMETRIC DATA				Eff: 87.06 lm/W
MODEL	VN25-16-15S-952C5-MVTD-BN	Imax (cd)	224.3	S/MH (C0/180)		1.50
NOMINAL POWER (W)	15	LOR (%)	100.0	S/MH (C90/270)		1.24
RATED VOLTAGE (V)	120	TOTAL FLUX (lm)	1247.4	η UP, DN (C0-180)		11.3, 38.8
NOMINAL FLUX (lm)	1247.41	CIE CLASS	SEMI-D.	η UP, DN (C180-360)		11.3, 38.6
LAMPS INSIDE	1	η up (%)	22.6	CIBSE SHR NOM		1.50
TEST VOLTAGE (V)	120	η down (%)	77.4	CIBSE SHR MAX		1.55



C Range: 0 - 360DEG
 C Interval: 22.5DEG
 Test Speed: HIGH
 Temperature: 25.2°C
 Operators: Dano
 Test Date: 2022-09-07

γ Range: 0 - 180DEG
 γ Interval: 1.0DEG
 Test System: EVERFINE GO-R5000_V2 SYSTEM V2.00.459
 Humidity: 55.3%
 Test Distance: 2.900m [K=0.8817]
 Remarks:

ZONAL FLUX DIAGRAM

ZONAL FLUX DIAGRAM:

γ	C0	C45	C90	C135	C180	C225	C270	C315	γ	Φ zone	Φ total	%lum, lamp
10	223.8	221.6	218.6	220.9	222.6	220.5	218.0	220.9	0- 10	21.17	21.17	1.7,1.7
20	224.1	216.3	206.5	214.9	222.3	214.3	205.6	215.3	10- 20	61.78	82.95	6.65,6.65
30	222.9	206.5	187.0	204.8	220.1	204.1	185.6	205.3	20- 30	97.10	180.0	14.4,14.4
40	218.6	193.2	160.6	190.6	215.0	190.0	159.2	191.5	30- 40	123.9	304.0	24.4,24.4
50	211.2	176.6	128.7	173.4	207.2	172.8	127.6	174.7	40- 50	140.0	444.0	35.6,35.6
60	201.4	158.2	92.89	154.6	197.4	154.1	91.80	156.3	50- 60	144.8	588.8	47.2,47.2
70	189.2	139.9	55.33	136.4	186.0	136.0	54.46	138.0	60- 70	139.6	728.3	58.4,58.4
80	174.8	122.1	21.12	118.9	171.9	118.8	20.42	120.4	70- 80	126.9	855.2	68.6,68.6
90	157.5	104.9	1.382	102.3	155.7	102.4	1.230	103.3	80- 90	110.2	965.5	77.4,77.4
100	138.9	88.33	1.522	86.81	138.8	87.04	1.413	87.07	90-100	94.37	1060	85,85
110	115.3	69.31	1.464	67.20	115.1	67.58	1.420	68.19	100-110	75.40	1135	91,91
120	88.83	49.83	1.321	47.59	88.45	48.11	1.283	48.94	110-120	54.03	1189	95.3,95.3
130	62.04	30.64	1.127	28.97	61.81	29.61	1.109	30.60	120-130	33.70	1223	98,98
140	36.61	13.78	0.8480	11.76	36.36	13.25	0.9152	12.81	130-140	17.40	1240	99.4,99.4
150	13.39	0.6513	0.6022	0.4887	12.99	1.081	0.7190	0.7202	140-150	6.158	1247	99.9,99.9
160	0.2917	0.3962	0.4694	0.3480	0.3296	0.4096	0.5809	0.5353	150-160	0.7475	1247	100,100
170	0.2823	0.3546	0.3997	0.3305	0.3270	0.3634	0.4722	0.4577	160-170	0.1120	1247	100,100
180	0.3198	0.3452	0.3759	0.3547	0.3189	0.3299	0.3693	0.3680	170-180	0.0349	1247	100,100
DEG	LUMINOUS INTENSITY:cd									UNIT:lm		

Conical surface Flux(90deg): 372.67 lm

%lum = 29.9%

%lamp = 29.9%

Conical surface Flux(120deg): 588.77 lm

%lum = 47.2%

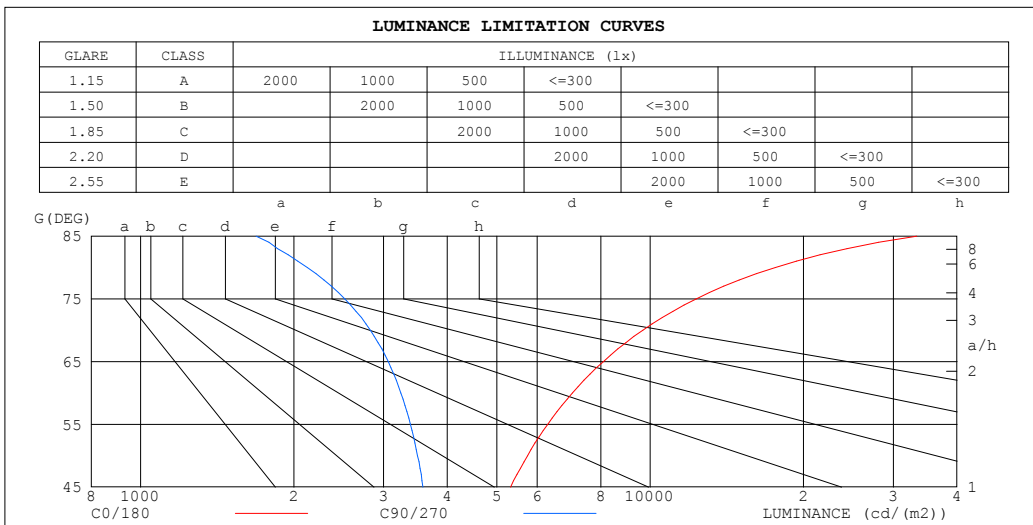
%lamp = 47.2%

C Range: 0 - 360DEG
 C Interval: 22.5DEG
 Test Speed: HIGH
 Temperature:25.2℃
 Operators:Dano
 Test Date:2022-09-07

γ Range: 0 - 180DEG
 γ Interval: 1.0DEG
 Test System:EVERFINE GO-R5000_V2 SYSTEM V2.00.459
 Humidity:55.3%
 Test Distance:2.900m [K=0.8817]
 Remarks:

LUMINANCE LIMITATION CURVES

Test:U:120.2V I:0.1201A P:14.33W PF:0.9928 Freq:60.01Hz Lamp Flux:1247.4lx1 lm		
NAME: VN25-16-15S-952C5-MVTD-BN 3500K	TYPE:	WEIGHT:
SPEC.:	DIM.:	SERIAL No.:
MFR.: FOSHAN LEDKEY LIGHTING CO.,LTD.	SUR.:	Shielding Angle:



LUMINANCE cd/(m2)		
G (DEG)	C0/180	C90/270
85	33355	1687
80	17598	2124
75	12317	2516
70	9673	2825
65	8094	3062
60	7042	3244
55	6293	3385
50	5745	3496
45	5321	3584

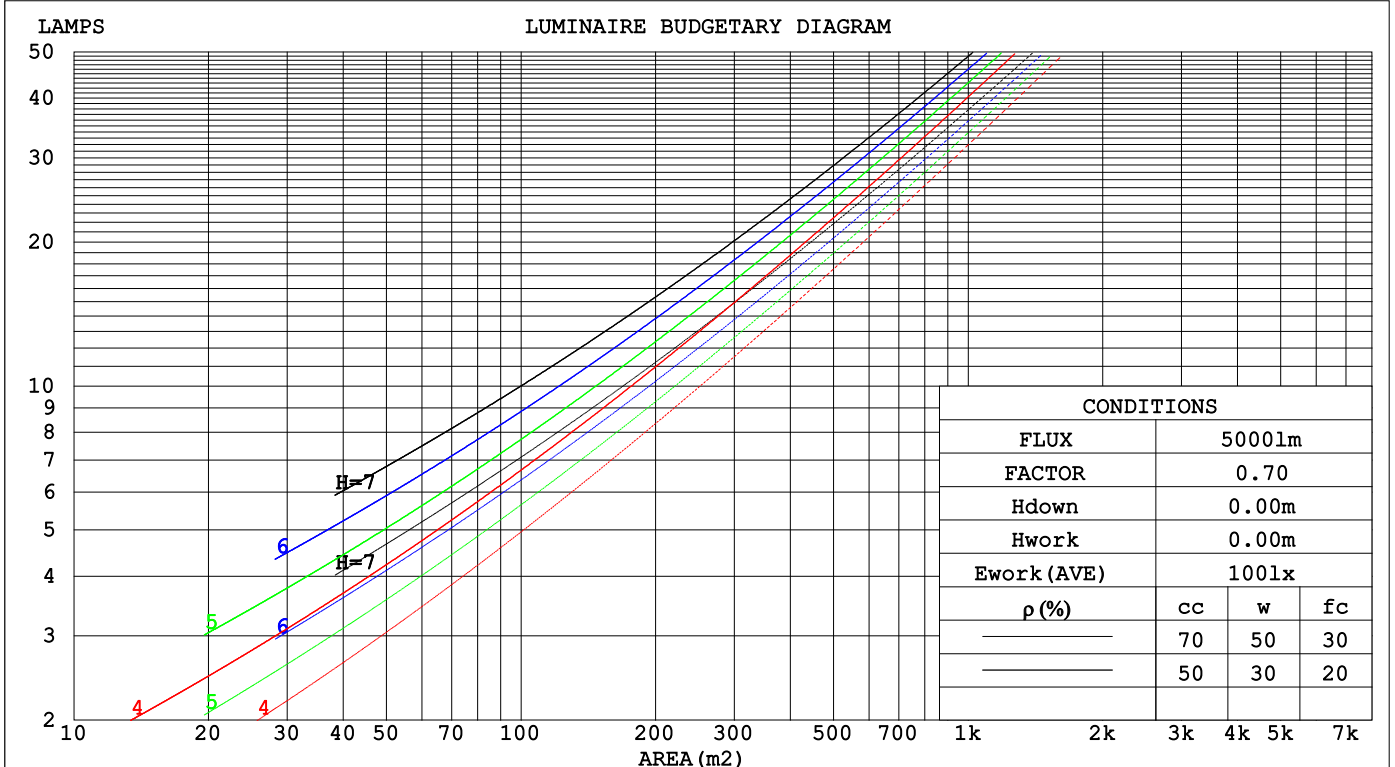
C Range: 0 - 360DEG
 C Interval: 22.5DEG
 Test Speed: HIGH
 Temperature: 25.2°C
 Operators: Dano
 Test Date: 2022-09-07

γ Range: 0 - 180DEG
 γ Interval: 1.0DEG
 Test System: EVERFINE GO-R5000_V2 SYSTEM V2.00.459
 Humidity: 55.3%
 Test Distance: 2.900m [K=0.8817]
 Remarks:

CU AND LUMINAIRE BUDGETARY ESTIMATE DIAGRAM

Test:U:120.2V I:0.1201A P:14.33W PF:0.9928 Freq:60.01Hz Lamp Flux:1247.4lx1 lm		
NAME: VN25-16-15S-952C5-MVTD-BN 3500K	TYPE:	WEIGHT:
SPEC.:	DIM.:	SERIAL No.:
MFR.: FOSHAN LEDKEY LIGHTING CO.,LTD.	SUR.:	Shielding Angle:

pcc	80%			70%			50%			30%			10%			0
pw	50%	30%	10%	50%	30%	10%	50%	30%	10%	50%	30%	10%	50%	30%	10%	0
pfc	20%			20%			20%			20%			20%			0
RCR	RCR:Room Cavity Ratio						Coefficients of Utilization(CU)									
0.0	1.14	1.14	1.14	1.08	1.08	1.08	.99	.99	.99	.90	.90	.90	.81	.81	.81	.77
1.0	.94	.88	.83	.89	.84	.79	.80	.76	.73	.73	.69	.66	.65	.63	.61	.57
2.0	.80	.71	.65	.76	.68	.62	.68	.62	.57	.62	.57	.52	.55	.51	.48	.44
3.0	.69	.59	.52	.65	.57	.50	.59	.52	.46	.53	.47	.43	.48	.43	.39	.36
4.0	.60	.51	.43	.57	.48	.42	.52	.44	.39	.47	.41	.36	.42	.37	.33	.30
5.0	.53	.44	.36	.51	.42	.35	.46	.38	.33	.42	.35	.30	.37	.32	.28	.25
6.0	.48	.38	.31	.45	.37	.30	.41	.34	.28	.37	.31	.26	.34	.28	.24	.22
7.0	.43	.34	.27	.41	.32	.26	.37	.30	.25	.34	.28	.23	.31	.25	.21	.19
8.0	.39	.30	.24	.37	.29	.23	.34	.27	.22	.31	.25	.20	.28	.23	.19	.17
9.0	.35	.27	.21	.34	.26	.21	.31	.24	.19	.28	.22	.18	.26	.21	.17	.15
10.0	.33	.24	.19	.31	.24	.19	.29	.22	.17	.26	.20	.16	.24	.19	.15	.13



C Range: 0 - 360DEG
 C Interval: 22.5DEG
 Test Speed: HIGH
 Temperature:25.2℃
 Operators:Dano
 Test Date:2022-09-07

γ Range: 0 - 180DEG
 γ Interval: 1.0DEG
 Test System:EVERFINE GO-R5000_V2 SYSTEM V2.00.459
 Humidity:55.3%
 Test Distance:2.900m [K=0.8817]
 Remarks:

WEC AND CCEC

Test:U:120.2V I:0.1201A P:14.33W PF:0.9928 Freq:60.01Hz Lamp Flux:1247.41x1 lm		
NAME: VN25-16-15S-952C5-MVTD-BN 3500K	TYPE:	WEIGHT:
SPEC.:	DIM.:	SERIAL No.:
MFR.: FOSHAN LEDKEY LIGHTING CO.,LTD.	SUR.:	Shielding Angle:

ρ _{cc}	80%			70%			50%			30%			10%			0
ρ _w	50%	30%	10%	50%	30%	10%	50%	30%	10%	50%	30%	10%	50%	30%	10%	0
ρ _{fc}	20%			20%			20%			20%			20%			0
RCR	RCR:Room Cavity Ratio						Wall Exitance Coefficients(WEC)									
0.0																
1.0	.404	.230	.073	.390	.223	.071	.364	.209	.067	.339	.196	.063	.317	.184	.059	
2.0	.344	.189	.058	.332	.183	.056	.307	.171	.053	.285	.160	.050	.265	.150	.047	
3.0	.303	.161	.048	.292	.156	.047	.270	.146	.044	.250	.137	.042	.231	.128	.040	
4.0	.271	.141	.041	.261	.137	.040	.241	.128	.038	.223	.120	.036	.206	.112	.034	
5.0	.246	.125	.036	.236	.121	.035	.218	.114	.033	.201	.106	.032	.186	.099	.030	
6.0	.224	.113	.032	.216	.109	.031	.199	.102	.030	.184	.096	.028	.169	.089	.026	
7.0	.207	.102	.029	.199	.099	.028	.183	.093	.027	.169	.087	.025	.156	.081	.024	
8.0	.191	.093	.026	.184	.091	.026	.170	.085	.024	.157	.079	.023	.145	.074	.022	
9.0	.178	.086	.024	.171	.083	.023	.158	.078	.022	.146	.073	.021	.135	.068	.020	
10.0	.166	.080	.022	.160	.077	.022	.148	.073	.020	.137	.068	.019	.126	.064	.018	

ρ _{cc}	80%			70%			50%			30%			10%			0
ρ _w	50%	30%	10%	50%	30%	10%	50%	30%	10%	50%	30%	10%	50%	30%	10%	0
ρ _{fc}	20%			20%			20%			20%			20%			0
RCR	RCR:Room Cavity Ratio						Ceiling Cavity Exitance Coefficients(CCEC)									
0.0	.363	.363	.363	.310	.310	.310	.212	.212	.212	.122	.122	.122	.039	.039	.039	
1.0	.360	.329	.301	.308	.282	.259	.211	.194	.179	.121	.112	.104	.039	.036	.034	
2.0	.354	.306	.266	.303	.264	.230	.208	.183	.161	.120	.106	.094	.038	.034	.031	
3.0	.347	.290	.245	.297	.250	.213	.204	.174	.149	.118	.102	.088	.038	.033	.029	
4.0	.339	.278	.232	.291	.240	.201	.200	.167	.142	.116	.098	.084	.037	.032	.028	
5.0	.331	.268	.222	.284	.232	.193	.196	.162	.136	.113	.095	.081	.037	.031	.027	
6.0	.324	.261	.215	.278	.226	.187	.192	.158	.133	.111	.093	.079	.036	.030	.026	
7.0	.316	.254	.210	.272	.220	.183	.188	.154	.130	.109	.091	.077	.035	.030	.026	
8.0	.310	.248	.206	.267	.216	.180	.184	.151	.128	.107	.089	.076	.035	.029	.025	
9.0	.303	.244	.203	.261	.212	.178	.181	.149	.126	.105	.088	.075	.034	.029	.025	
10.0	.297	.240	.201	.256	.208	.176	.178	.146	.125	.104	.087	.074	.034	.028	.025	

C Range: 0 - 360DEG
 C Interval: 22.5DEG
 Test Speed: HIGH
 Temperature:25.2℃
 Operators:Dano
 Test Date:2022-09-07

γ Range: 0 - 180DEG
 γ Interval: 1.0DEG
 Test System:EVERFINE GO-R5000_V2 SYSTEM V2.00.459
 Humidity:55.3%
 Test Distance:2.900m [K=0.8817]
 Remarks:

UGR(Unified Glare Rating) Table

Test:U:120.2V I:0.1201A P:14.33W PF:0.9928 Freq:60.01Hz Lamp Flux:1247.4lx1 lm		
NAME: VN25-16-15S-952C5-MVTD-BN 3500K	TYPE:	WEIGHT:
SPEC.:	DIM.:	SERIAL No.:
MFR.: FOSHAN LEDKEY LIGHTING CO.,LTD.	SUR.:	Shielding Angle:

ceiling/cavity	0.7	0.7	0.5	0.5	0.3	0.7	0.7	0.5	0.5	0.3
walls	0.5	0.3	0.5	0.3	0.3	0.5	0.3	0.5	0.3	0.3
working plane	0.2	0.2	0.2	0.2	0.2	0.2	0.2	0.2	0.2	0.2

Room dimensions		Viewed crosswise					Viewed endwise				
x = 2H	y = 2H	18.5	19.8	19.1	20.4	21.1	15.4	16.8	16.0	17.3	18.0
	3H	21.5	22.8	22.1	23.4	24.1	16.9	18.1	17.5	18.7	19.4
	4H	23.2	24.4	23.8	25.0	25.7	17.5	18.7	18.1	19.3	20.0
	6H	25.1	26.2	25.7	26.8	27.6	17.9	19.1	18.6	19.7	20.4
	8H	26.1	27.2	26.7	27.8	28.6	18.1	19.2	18.7	19.8	20.6
	12H	27.3	28.3	27.9	29.0	29.7	18.2	19.2	18.8	19.9	20.6
4H	2H	19.0	20.2	19.7	20.8	21.6	16.9	18.1	17.5	18.7	19.4
	3H	22.3	23.4	23.0	24.0	24.8	18.7	19.8	19.4	20.4	21.2
	4H	24.2	25.2	24.9	25.8	26.6	19.5	20.5	20.2	21.2	22.0
	6H	26.3	27.2	27.0	27.9	28.7	20.2	21.1	20.9	21.8	22.6
	8H	27.5	28.3	28.2	29.0	29.8	20.5	21.3	21.2	22.0	22.8
	12H	28.8	29.5	29.5	30.3	31.1	20.6	21.4	21.4	22.1	23.0
8H	4H	24.6	25.4	25.3	26.1	26.9	21.0	21.8	21.8	22.6	23.4
	6H	27.0	27.6	27.7	28.4	29.3	22.2	22.9	22.9	23.6	24.5
	8H	28.4	29.0	29.1	29.7	30.6	22.7	23.3	23.4	24.0	24.9
	12H	30.0	30.5	30.7	31.3	32.2	23.1	23.6	23.8	24.4	25.3
12H	4H	24.6	25.3	25.3	26.0	26.9	21.5	22.3	22.3	23.0	23.9
	6H	27.1	27.7	27.9	28.5	29.4	23.0	23.6	23.7	24.4	25.3
	8H	28.6	29.1	29.4	29.9	30.8	23.7	24.2	24.5	25.0	25.9

Variations with the observer position at spacings(CIE Pub.117):		
S = 1.0H	+ 0.1 / - 0.1	+ 0.1 / - 0.1
1.5H	+ 0.2 / - 0.3	+ 0.2 / - 0.3
2.0H	+ 0.3 / - 0.4	+ 0.3 / - 0.4

CIE Pub.117, 1247 lm Total Lamp Luminous Flux Corrected (8log(F/F0) = 0.8)
Area: 0.0572555 m2

C Range: 0 - 360DEG
C Interval: 22.5DEG
Test Speed: HIGH
Temperature:25.2℃
Operators:Dano
Test Date:2022-09-07

γ Range: 0 - 180DEG
γ Interval: 1.0DEG
Test System:EVERFINE GO-R5000_V2 SYSTEM V2.00.459
Humidity:55.3%
Test Distance:2.900m [K=0.8817]
Remarks:

UTILIZATION FACTORS TABLE

Test:U:120.2V I:0.1201A P:14.33W PF:0.9928 Freq:60.01Hz Lamp Flux:1247.4lx1 lm		
NAME: VN25-16-15S-952C5-MVTD-BN 3500K	TYPE:	WEIGHT:
SPEC.:	DIM.:	SERIAL No.:
MFR.: FOSHAN LEDKEY LIGHTING CO.,LTD.	SUR.:	Shielding Angle:

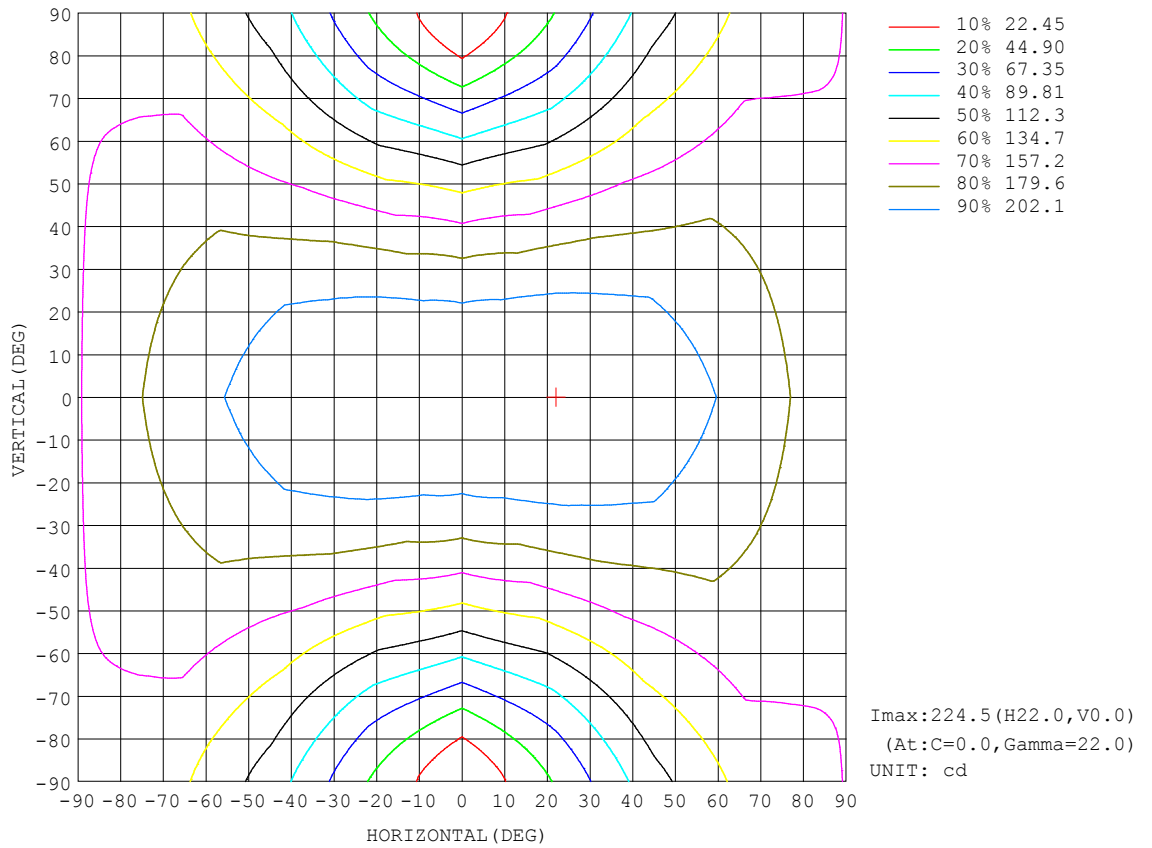
REFLECTANCE										
Ceiling	0.8	0.8	0.8	0.7	0.7	0.7	0.5	0.5	0.5	0
Walls	0.7	0.5	0.3	0.7	0.5	0.3	0.7	0.5	0.3	0
Working plane	0.2	0.2	0.2	0.2	0.2	0.2	0.2	0.2	0.2	0
ROOM INDEX	UTILIZATION FACTORS (PERCENT) $k(RI) \times RCR = 5$									
k = 0.60	45	32	25	44	32	25	42	31	24	18
0.80	54	41	32	52	40	32	49	38	31	23
1.00	62	48	39	59	47	39	56	47	37	28
1.25	68	55	46	66	54	45	61	51	44	33
1.50	74	61	52	71	59	50	65	56	48	37
2.00	81	69	60	78	67	59	71	63	56	43
2.50	86	75	66	82	72	64	75	67	61	47
3.00	90	79	71	86	77	69	78	71	65	50
4.00	94	86	79	90	82	76	82	76	71	55
5.00	98	90	84	93	86	81	85	79	75	58
ROOM INDEX	UF(total)									Direct
According to DIN EN 13032-2 2004			Suspended				SHRNOM = 1.25			

C Range: 0 - 360DEG
 C Interval: 22.5DEG
 Test Speed: HIGH
 Temperature:25.2°C
 Operators:Dano
 Test Date:2022-09-07

γ Range: 0 - 180DEG
 γ Interval: 1.0DEG
 Test System:EVERFINE GO-R5000_V2 SYSTEM V2.00.459
 Humidity:55.3%
 Test Distance:2.900m [K=0.8817]
 Remarks:

ISOCANDELA DIAGRAM

Test:U:120.2V I:0.1201A P:14.33W PF:0.9928 Freq:60.01Hz Lamp Flux:1247.4lx1 lm		
NAME: VN25-16-15S-952C5-MVTD-BN 3500K	TYPE:	WEIGHT:
SPEC.:	DIM.:	SERIAL No.:
MFR.: FOSHAN LEDKEY LIGHTING CO.,LTD.	SUR.:	Shielding Angle:



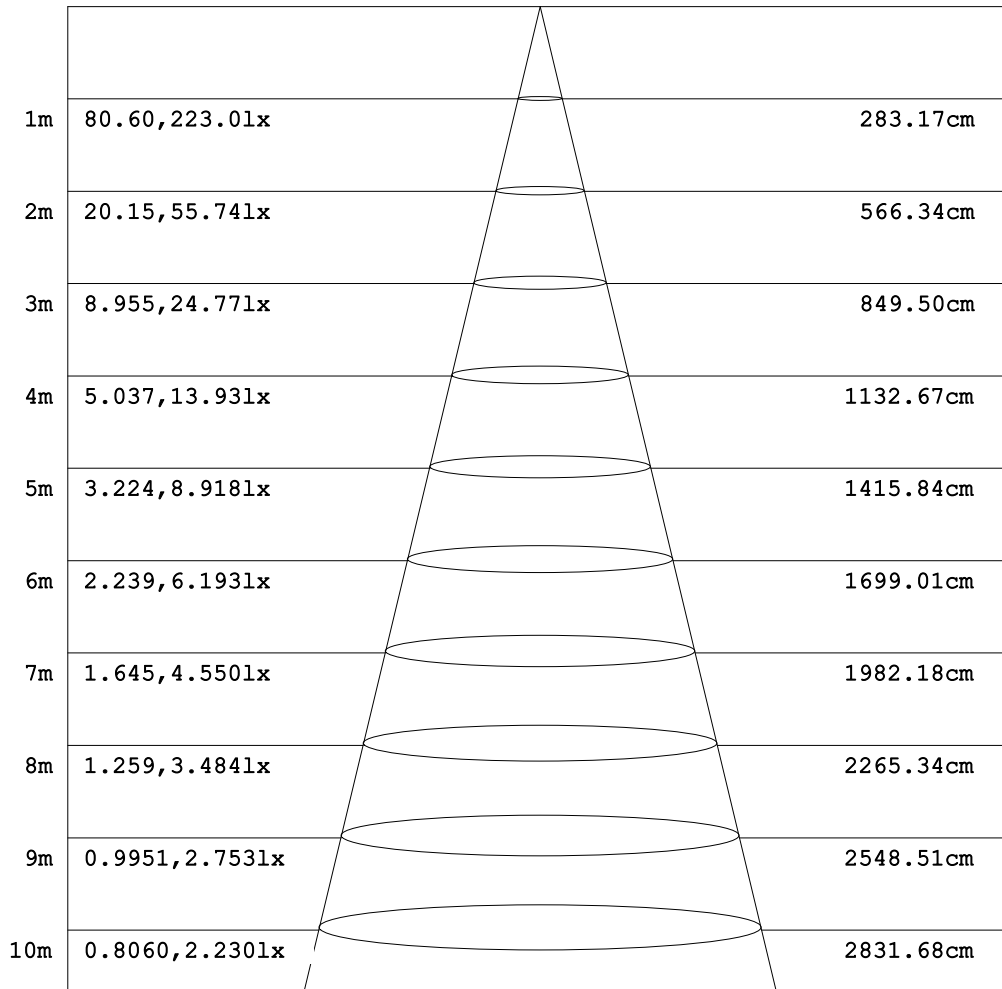
C Range: 0 - 360DEG
 C Interval: 22.5DEG
 Test Speed: HIGH
 Temperature:25.2°C
 Operators:Dano
 Test Date:2022-09-07

γ Range: 0 - 180DEG
 γ Interval: 1.0DEG
 Test System:EVERFINE GO-R5000_V2 SYSTEM V2.00.459
 Humidity:55.3%
 Test Distance:2.900m [K=0.8817]
 Remarks:

AAI Figure

Test:U:120.2V I:0.1201A P:14.33W PF:0.9928 Freq:60.01Hz Lamp Flux:1247.4lx1 lm		
NAME: VN25-16-15S-952C5-MVTD-BN 3500K	TYPE:	WEIGHT:
SPEC.:	DIM.:	SERIAL No.:
MFR.: FOSHAN LEDKEY LIGHTING CO.,LTD.	SUR.:	Shielding Angle:

Flux out:516.4 lm



Angle:109.53deg

Height

Eavg, Emax

Diameter

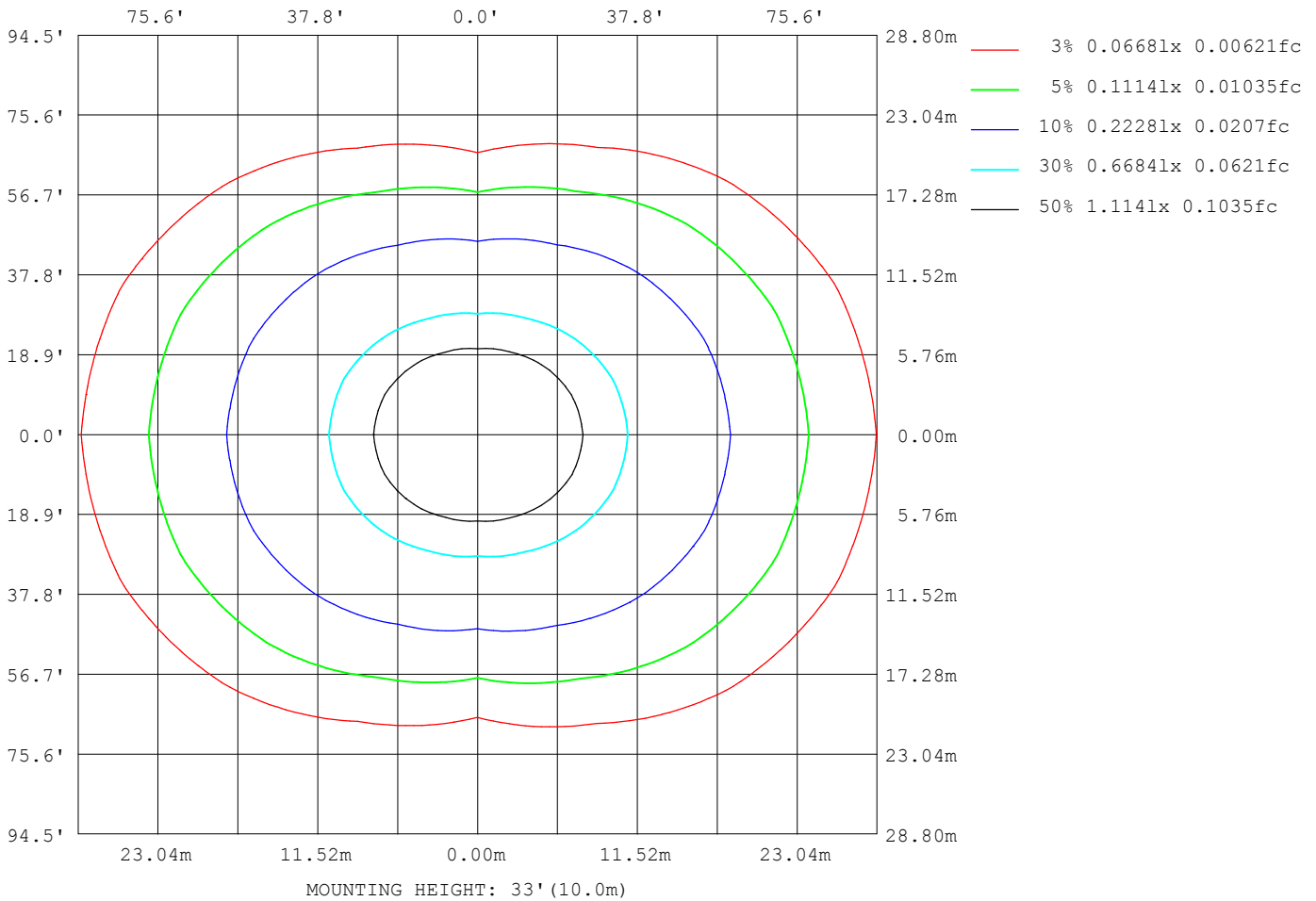
Note:The Curves indicate the illuminated area and the average illumination when the luminaire is at different distance.

C Range: 0 - 360DEG
 C Interval: 22.5DEG
 Test Speed: HIGH
 Temperature:25.2℃
 Operators:Dano
 Test Date:2022-09-07

γ Range: 0 - 180DEG
 γ Interval: 1.0DEG
 Test System:EVERFINE GO-R5000_V2 SYSTEM V2.00.459
 Humidity:55.3%
 Test Distance:2.900m [K=0.8817]
 Remarks:

ISOLUX DIAGRAM

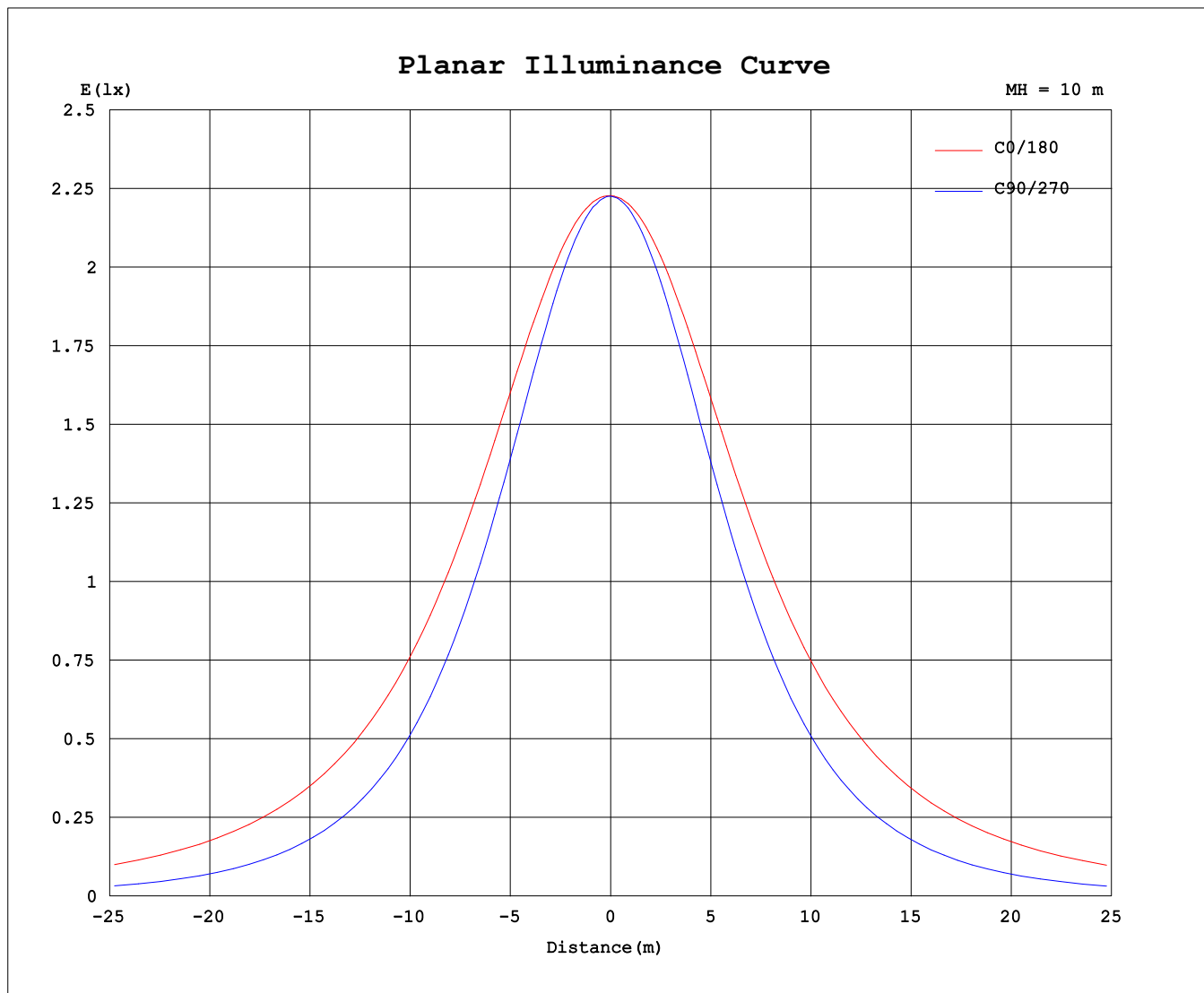
Test:U:120.2V I:0.1201A P:14.33W PF:0.9928 Freq:60.01Hz Lamp Flux:1247.4lx1 lm		
NAME: VN25-16-15S-952C5-MVTD-BN 3500K	TYPE:	WEIGHT:
SPEC.:	DIM.:	SERIAL No.:
MFR.: FOSHAN LEDKEY LIGHTING CO.,LTD.	SUR.:	Shielding Angle:



C Range: 0 - 360DEG
 C Interval: 22.5DEG
 Test Speed: HIGH
 Temperature:25.2°C
 Operators:Dano
 Test Date:2022-09-07

γ Range: 0 - 180DEG
 γ Interval: 1.0DEG
 Test System:EVERFINE GO-R5000_V2 SYSTEM V2.00.459
 Humidity:55.3%
 Test Distance:2.900m [K=0.8817]
 Remarks:

Planar Illuminance Curve



C Range: 0 - 360DEG
C Interval: 22.5DEG
Test Speed: HIGH
Temperature: 25.2°C
Operators: Dano
Test Date: 2022-09-07

γ Range: 0 - 180DEG
γ Interval: 1.0DEG
Test System: EVERFINE GO-R5000_V2 SYSTEM V2.00.459
Humidity: 55.3%
Test Distance: 2.900m [K=0.8817]
Remarks:

LUMINOUS DISTRIBUTION INTENSITY DATA

Test:U:120.2V I:0.1201A P:14.33W PF:0.9928 Freq:60.01Hz Lamp Flux:1247.4lx1 lm		
NAME: VN25-16-15S-952C5-MVTD-BN 3500K	TYPE:	WEIGHT:
SPEC.:	DIM.:	SERIAL No.:
MFR.: FOSHAN LEDKEY LIGHTING CO.,LTD.	SUR.:	Shielding Angle:

Table--1

UNIT: cd

C (DEG) \ γ (DEG)	0	22.5	45	67.5	90	112.5	135	157.5	180	202.5	225	247.5	270	292.5	315	337.5			
0	223	223	223	223	223	223	223	223	223	223	223	223	223	223	223	223			
5	223	223	223	222	222	222	222	223	223	222	222	222	221	222	222	223			
10	224	223	222	219	219	219	221	222	223	222	221	219	218	219	221	223			
15	224	223	220	215	214	215	219	221	223	221	218	214	213	215	219	222			
20	224	222	216	210	206	209	215	220	222	220	214	208	206	209	215	221			
25	224	221	212	202	198	202	210	219	222	218	210	200	196	201	211	220			
30	223	219	207	193	187	192	205	216	220	215	204	191	186	192	205	218			
35	221	216	200	183	175	182	198	213	218	212	197	181	173	182	199	214			
40	219	212	193	171	161	170	191	208	215	208	190	169	159	170	192	211			
45	215	207	185	159	145	158	182	203	211	203	182	157	144	158	183	206			
50	211	202	177	145	129	144	173	198	207	198	173	143	128	144	175	201			
55	206	196	168	132	111	130	164	192	202	192	164	129	110	130	166	195			
60	201	190	158	117	92.9	116	155	186	197	186	154	115	91.8	116	156	189			
65	196	183	149	103	74.1	101	145	179	192	179	145	101	73.1	102	147	182			
70	189	176	140	89.4	55.3	87.4	136	173	186	173	136	86.9	54.5	87.9	138	176			
75	182	169	131	76.7	37.3	74.5	128	165	179	165	127	74.3	36.5	75.2	129	168			
80	175	161	122	65.4	21.1	63.2	119	158	172	158	119	63.3	20.4	64.1	120	160			
85	166	153	113	55.8	8.42	53.6	110	150	164	150	110	53.8	7.68	54.5	112	152			
90	158	144	105	47.8	1.38	45.7	102	142	156	141	102	46.1	1.23	46.7	103	143			
95	149	136	97.4	41.8	1.47	40.3	95.5	134	148	134	95.6	40.7	1.32	40.8	95.9	135			
100	139	126	88.3	35.6	1.52	33.8	86.8	125	139	125	87.0	34.4	1.41	34.6	87.1	125			
105	127	115	79.0	29.5	1.52	27.6	77.2	114	128	114	77.5	28.2	1.45	28.5	77.9	114			
110	115	103	69.3	23.7	1.46	21.7	67.2	102	115	102	67.6	22.3	1.42	22.8	68.2	103			
115	102	91.0	59.5	18.1	1.40	16.0	57.3	89.5	102	89.8	57.8	16.7	1.36	17.3	58.5	90.6			
120	88.8	78.6	49.8	12.7	1.32	10.7	47.6	77.0	88.5	77.4	48.1	11.3	1.28	11.9	48.9	78.2			
125	75.4	66.2	40.3	7.65	1.23	5.67	38.1	64.6	75.0	65.0	38.7	6.23	1.20	6.76	39.7	65.9			
130	62.0	53.9	30.6	3.11	1.13	1.51	29.0	52.3	61.8	52.9	29.6	1.99	1.11	2.55	30.6	53.8			
135	49.1	42.1	22.1	1.25	1.00	1.04	20.1	40.4	48.9	41.3	21.1	1.17	1.02	1.23	21.7	41.9			
140	36.6	30.6	13.8	0.97	0.85	0.78	11.8	29.0	36.4	30.2	13.3	0.94	0.92	0.95	12.8	30.2			
145	24.6	18.9	6.13	0.75	0.72	0.66	4.16	18.0	24.3	20.0	6.55	0.79	0.80	0.81	3.77	18.7			
150	13.4	9.37	0.65	0.60	0.60	0.55	0.49	7.95	13.0	10.4	1.08	0.69	0.72	0.71	0.72	7.66			
155	3.26	0.85	0.47	0.52	0.53	0.48	0.38	0.31	2.80	1.81	0.48	0.59	0.65	0.64	0.58	0.55			
160	0.29	0.33	0.40	0.46	0.47	0.42	0.35	0.27	0.33	0.33	0.41	0.51	0.58	0.59	0.54	0.45			
165	0.28	0.31	0.37	0.41	0.43	0.39	0.33	0.28	0.32	0.32	0.38	0.45	0.51	0.52	0.49	0.43			
170	0.28	0.31	0.35	0.39	0.40	0.37	0.33	0.29	0.33	0.33	0.36	0.43	0.47	0.49	0.46	0.42			
175	0.30	0.33	0.36	0.38	0.38	0.36	0.34	0.32	0.32	0.32	0.35	0.38	0.42	0.44	0.42	0.38			
180	0.32	0.33	0.35	0.37	0.38	0.37	0.35	0.33	0.32	0.32	0.33	0.35	0.37	0.37	0.37	0.35			

C Range: 0 - 360DEG
 C Interval: 22.5DEG
 Test Speed: HIGH
 Temperature:25.2℃
 Operators:Dano
 Test Date:2022-09-07

γ Range: 0 - 180DEG
 γ Interval: 1.0DEG
 Test System:EVERFINE GO-R5000_V2 SYSTEM V2.00.459
 Humidity:55.3%
 Test Distance:2.900m [K=0.8817]
 Remarks: