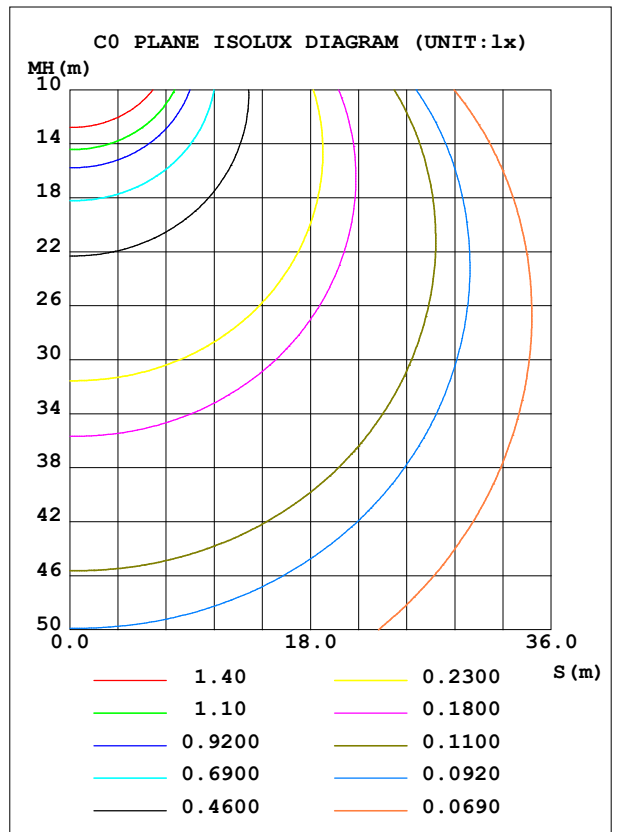
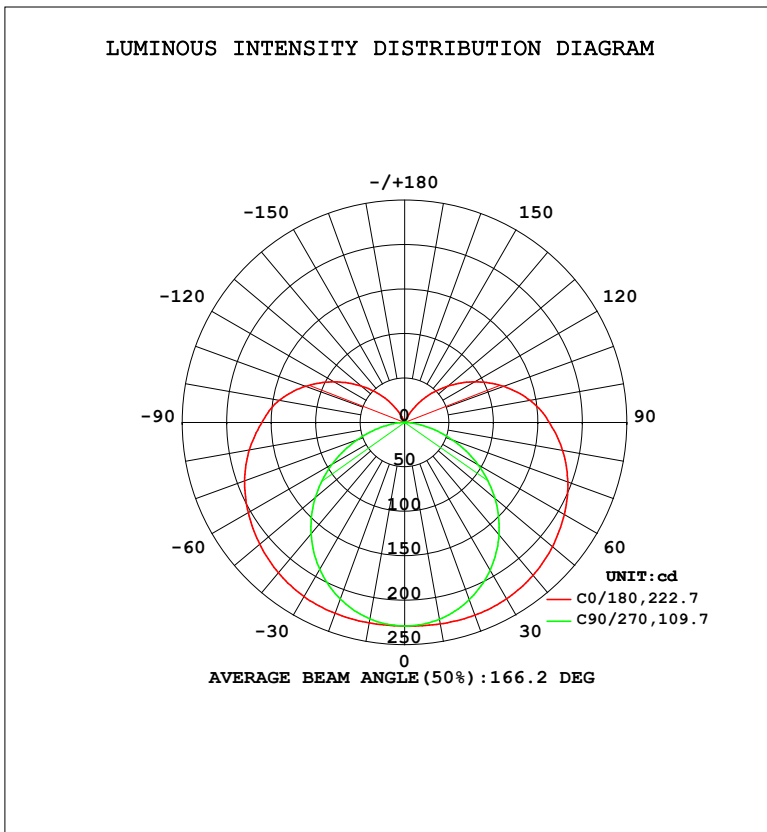


LUMINAIRE PHOTOMETRIC TEST REPORT

Test:U:120.2V I:0.1187A P:14.16W PF:0.9927 Freq:60.01Hz Lamp Flux:1285.2lx1 lm		
NAME: VN25-16-15S-952C5-MVTD-BN 4000K	TYPE:	WEIGHT:
SPEC.:	DIM.:	SERIAL No.:
MFR.: FOSHAN LEDKEY LIGHTING CO.,LTD.	SUR.:	Shielding Angle:

DATA OF LAMP		PHOTOMETRIC DATA			
MOD:VN25-16-15S-952C5-MVTD-BN		Imax (cd)	230.7	S/MH (C0/180)	1.50
NOMINAL POWER (W)	15	LOR (%)	100.0	S/MH (C90/270)	1.24
RATED VOLTAGE (V)	120	TOTAL FLUX (lm)	1285.2	η UP, DN (C0-180)	11.3, 38.8
NOMINAL FLUX (lm)	1285.21	CIE CLASS	SEMI-D.	η UP, DN (C180-360)	11.3, 38.5
LAMPS INSIDE	1	η up (%)	22.7	CIBSE SHR NOM	1.50
TEST VOLTAGE (V)	120	η down (%)	77.3	CIBSE SHR MAX	1.55



C Range: 0 - 360DEG
 C Interval: 22.5DEG
 Test Speed: HIGH
 Temperature: 25.2°C
 Operators: Dano
 Test Date: 2022-09-07

γ Range: 0 - 180DEG
 γ Interval: 1.0DEG
 Test System: EVERFINE GO-R5000_V2 SYSTEM V2.00.459
 Humidity: 55.3%
 Test Distance: 2.900m [K=0.8817]
 Remarks:

ZONAL FLUX DIAGRAM

ZONAL FLUX DIAGRAM:

γ	C0	C45	C90	C135	C180	C225	C270	C315	γ	Φ zone	Φ total	%lum, lamp
10	230.1	227.8	224.7	226.8	228.8	226.7	224.3	227.5	0- 10	21.76	21.76	1.69,1.69
20	230.5	222.3	212.3	220.6	228.4	220.3	211.5	221.7	10- 20	63.52	85.28	6.64,6.64
30	229.1	212.3	192.2	210.4	226.2	209.8	190.8	211.5	20- 30	99.85	185.1	14.4,14.4
40	224.5	198.6	165.1	196.1	220.9	195.3	163.8	197.5	30- 40	127.5	312.6	24.3,24.3
50	217.2	181.5	132.6	178.5	212.9	177.7	131.1	180.3	40- 50	144.1	456.7	35.5,35.5
60	207.4	162.8	95.74	159.3	203.0	158.7	94.46	161.3	50- 60	149.1	605.7	47.1,47.1
70	195.3	143.9	57.02	140.6	191.5	140.1	56.11	142.5	60- 70	143.8	749.5	58.3,58.3
80	180.3	125.7	21.79	122.8	177.3	122.4	21.09	124.6	70- 80	130.8	880.4	68.5,68.5
90	162.7	108.1	1.428	105.6	160.6	105.5	1.275	106.9	80- 90	113.7	994.1	77.3,77.3
100	143.4	90.97	1.568	89.75	143.4	89.87	1.459	90.03	90-100	97.40	1092	84.9,84.9
110	118.9	71.33	1.509	69.46	119.0	69.85	1.468	70.44	100-110	77.85	1169	91,91
120	91.56	51.21	1.361	49.27	91.48	49.81	1.326	50.56	110-120	55.79	1225	95.3,95.3
130	63.89	31.41	1.162	30.11	63.99	30.78	1.145	31.57	120-130	34.81	1260	98,98
140	37.61	14.00	0.8739	12.34	37.77	13.88	0.9447	13.15	130-140	17.97	1278	99.4,99.4
150	13.63	0.6611	0.6206	0.5073	13.62	1.277	0.7402	0.7443	140-150	6.363	1284	99.9,99.9
160	0.2987	0.4070	0.4829	0.3578	0.3390	0.4213	0.5986	0.5524	150-160	0.7733	1285	100,100
170	0.2896	0.3650	0.4111	0.3398	0.3365	0.3735	0.4868	0.4705	160-170	0.1152	1285	100,100
180	0.3292	0.3561	0.3877	0.3660	0.3280	0.3398	0.3800	0.3787	170-180	0.0359	1285	100,100
DEG	LUMINOUS INTENSITY:cd									UNIT:lm		

Conical surface Flux(90deg): 383.28 lm

%lum = 29.8%
 %lamp = 29.8%

Conical surface Flux(120deg): 605.74 lm

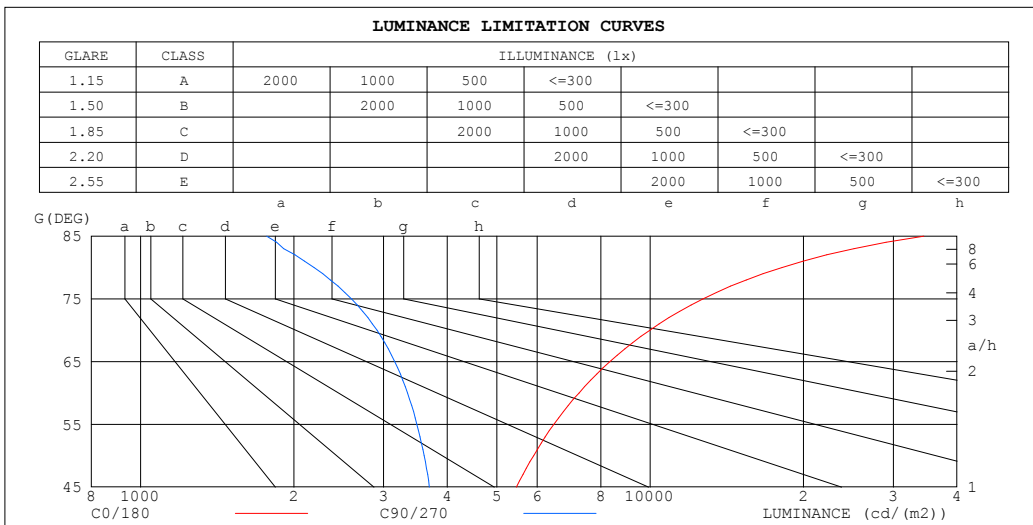
%lum = 47.1%
 %lamp = 47.1%

C Range: 0 - 360DEG
 C Interval: 22.5DEG
 Test Speed: HIGH
 Temperature:25.2℃
 Operators:Dano
 Test Date:2022-09-07

γ Range: 0 - 180DEG
 γ Interval: 1.0DEG
 Test System:EVERFINE GO-R5000_V2 SYSTEM V2.00.459
 Humidity:55.3%
 Test Distance:2.900m [K=0.8817]
 Remarks:

LUMINANCE LIMITATION CURVES

Test:U:120.2V I:0.1187A P:14.16W PF:0.9927 Freq:60.01Hz Lamp Flux:1285.2lx1 lm		
NAME: VN25-16-15S-952C5-MVTD-BN 4000K	TYPE:	WEIGHT:
SPEC.:	DIM.:	SERIAL No.:
MFR.: FOSHAN LEDKEY LIGHTING CO.,LTD.	SUR.:	Shielding Angle:



LUMINANCE cd/(m2)		
G (DEG)	C0/180	C90/270
85	34421	1769
80	18150	2191
75	12704	2594
70	9981	2911
65	8339	3155
60	7249	3343
55	6474	3486
50	5907	3601
45	5466	3689

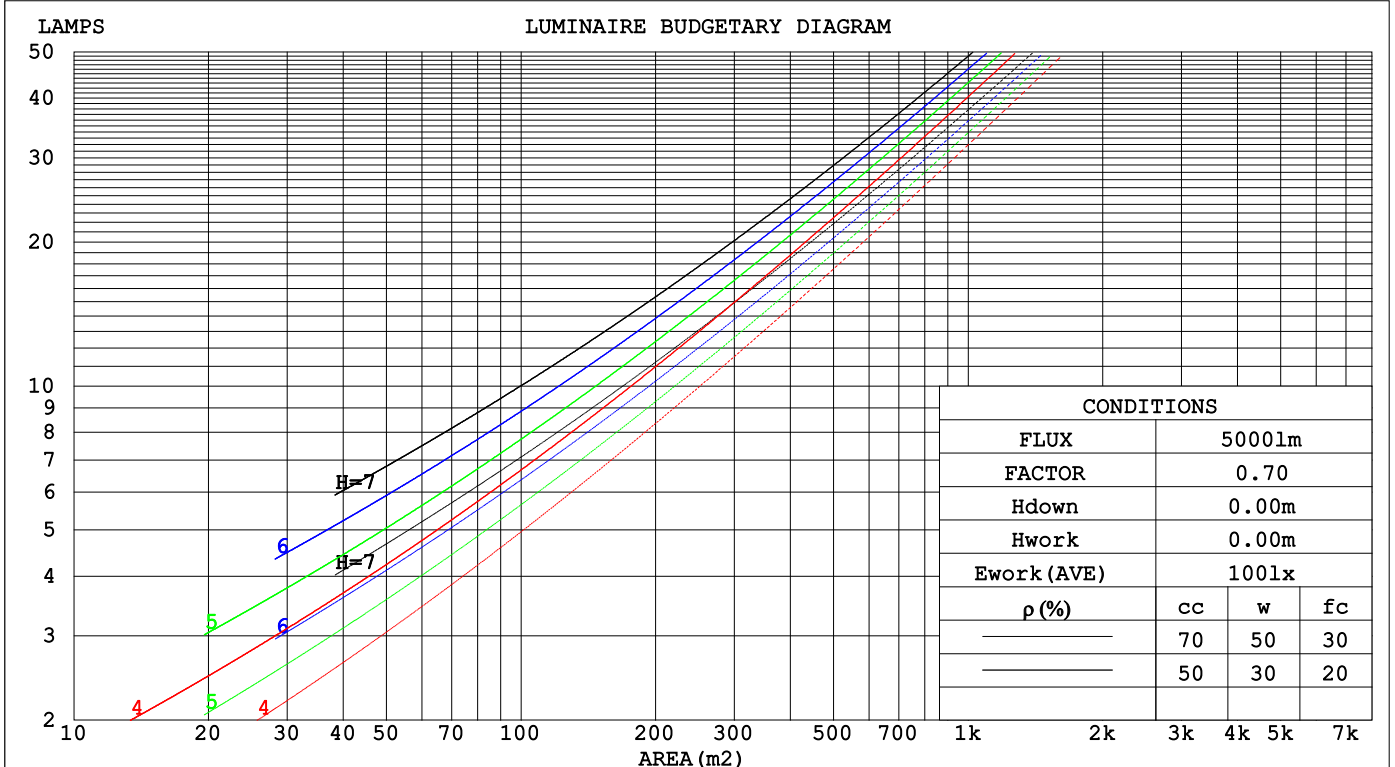
C Range: 0 - 360DEG
 C Interval: 22.5DEG
 Test Speed: HIGH
 Temperature: 25.2°C
 Operators: Dano
 Test Date: 2022-09-07

γ Range: 0 - 180DEG
 γ Interval: 1.0DEG
 Test System: EVERFINE GO-R5000_V2 SYSTEM V2.00.459
 Humidity: 55.3%
 Test Distance: 2.900m [K=0.8817]
 Remarks:

CU AND LUMINAIRE BUDGETARY ESTIMATE DIAGRAM

Test:U:120.2V I:0.1187A P:14.16W PF:0.9927 Freq:60.01Hz Lamp Flux:1285.2lx1 lm		
NAME: VN25-16-15S-952C5-MVTD-BN 4000K	TYPE:	WEIGHT:
SPEC.:	DIM.:	SERIAL No.:
MFR.: FOSHAN LEDKEY LIGHTING CO.,LTD.	SUR.:	Shielding Angle:

pcc	80%			70%			50%			30%			10%			0
pw	50%	30%	10%	50%	30%	10%	50%	30%	10%	50%	30%	10%	50%	30%	10%	0
pfc	20%			20%			20%			20%			20%			0
RCR	RCR:Room Cavity Ratio						Coefficients of Utilization(CU)									
0.0	1.14	1.14	1.14	1.08	1.08	1.08	.99	.99	.99	.90	.90	.90	.81	.81	.81	.77
1.0	.93	.88	.83	.89	.84	.79	.80	.76	.73	.73	.69	.66	.65	.63	.60	.57
2.0	.79	.71	.65	.76	.68	.62	.68	.62	.57	.61	.57	.52	.55	.51	.48	.44
3.0	.69	.59	.52	.65	.57	.50	.59	.52	.46	.53	.47	.43	.48	.43	.39	.36
4.0	.60	.50	.43	.57	.48	.42	.52	.44	.39	.47	.41	.36	.42	.37	.33	.30
5.0	.53	.44	.36	.51	.42	.35	.46	.38	.33	.42	.35	.30	.37	.32	.28	.25
6.0	.48	.38	.31	.45	.37	.30	.41	.34	.28	.37	.31	.26	.34	.28	.24	.22
7.0	.43	.34	.27	.41	.32	.26	.37	.30	.25	.34	.28	.23	.31	.25	.21	.19
8.0	.39	.30	.24	.37	.29	.23	.34	.27	.22	.31	.25	.20	.28	.23	.19	.17
9.0	.35	.27	.21	.34	.26	.21	.31	.24	.19	.28	.22	.18	.26	.21	.17	.15
10.0	.33	.24	.19	.31	.24	.19	.29	.22	.17	.26	.20	.16	.24	.19	.15	.13



C Range: 0 - 360DEG
 C Interval: 22.5DEG
 Test Speed: HIGH
 Temperature:25.2°C
 Operators:Dano
 Test Date:2022-09-07

γ Range: 0 - 180DEG
 γ Interval: 1.0DEG
 Test System:EVERFINE GO-R5000_V2 SYSTEM V2.00.459
 Humidity:55.3%
 Test Distance:2.900m [K=0.8817]
 Remarks:

WEC AND CCEC

Test:U:120.2V I:0.1187A P:14.16W PF:0.9927 Freq:60.01Hz Lamp Flux:1285.21x1 lm		
NAME: VN25-16-15S-952C5-MVTD-BN 4000K	TYPE:	WEIGHT:
SPEC.:	DIM.:	SERIAL No.:
MFR.: FOSHAN LEDKEY LIGHTING CO.,LTD.	SUR.:	Shielding Angle:

ρ _{cc}	80%			70%			50%			30%			10%			0
ρ _w	50%	30%	10%	50%	30%	10%	50%	30%	10%	50%	30%	10%	50%	30%	10%	0
ρ _{fc}	20%			20%			20%			20%			20%			0
RCR	RCR:Room Cavity Ratio						Wall Exitance Coefficients(WEC)									
0.0																
1.0	.405	.230	.073	.390	.223	.071	.364	.209	.067	.339	.196	.063	.317	.184	.059	
2.0	.344	.189	.058	.332	.183	.056	.308	.171	.053	.285	.160	.050	.265	.150	.047	
3.0	.303	.161	.048	.292	.156	.047	.270	.146	.044	.250	.137	.042	.231	.128	.040	
4.0	.271	.141	.041	.261	.137	.040	.241	.128	.038	.223	.120	.036	.205	.112	.034	
5.0	.246	.125	.036	.236	.121	.035	.218	.114	.033	.201	.106	.032	.186	.099	.030	
6.0	.224	.113	.032	.216	.109	.031	.199	.102	.030	.184	.096	.028	.169	.089	.026	
7.0	.207	.102	.029	.199	.099	.028	.183	.093	.027	.169	.087	.025	.156	.081	.024	
8.0	.191	.093	.026	.184	.091	.026	.170	.085	.024	.157	.079	.023	.145	.074	.022	
9.0	.178	.086	.024	.171	.083	.023	.158	.078	.022	.146	.073	.021	.135	.068	.020	
10.0	.166	.080	.022	.160	.077	.022	.148	.073	.020	.137	.068	.019	.126	.064	.018	

ρ _{cc}	80%			70%			50%			30%			10%			0
ρ _w	50%	30%	10%	50%	30%	10%	50%	30%	10%	50%	30%	10%	50%	30%	10%	0
ρ _{fc}	20%			20%			20%			20%			20%			0
RCR	RCR:Room Cavity Ratio						Ceiling Cavity Exitance Coefficients(CCEC)									
0.0	.363	.363	.363	.310	.310	.310	.212	.212	.212	.122	.122	.122	.039	.039	.039	
1.0	.361	.329	.301	.309	.283	.259	.211	.194	.179	.122	.113	.104	.039	.036	.034	
2.0	.354	.307	.267	.304	.264	.231	.208	.183	.161	.120	.106	.094	.038	.034	.031	
3.0	.347	.291	.246	.297	.251	.213	.204	.174	.149	.118	.102	.088	.038	.033	.029	
4.0	.339	.278	.232	.291	.241	.201	.200	.168	.142	.116	.098	.084	.037	.032	.028	
5.0	.331	.269	.222	.285	.232	.193	.196	.162	.137	.114	.095	.081	.037	.031	.027	
6.0	.324	.261	.216	.278	.226	.188	.192	.158	.133	.111	.093	.079	.036	.030	.026	
7.0	.317	.254	.211	.273	.220	.184	.188	.155	.130	.109	.091	.077	.035	.030	.026	
8.0	.310	.249	.207	.267	.216	.180	.185	.152	.128	.107	.089	.076	.035	.029	.025	
9.0	.304	.244	.204	.262	.212	.178	.181	.149	.126	.106	.088	.075	.034	.029	.025	
10.0	.298	.240	.202	.257	.208	.176	.178	.147	.125	.104	.087	.075	.034	.028	.025	

C Range: 0 - 360DEG
 C Interval: 22.5DEG
 Test Speed: HIGH
 Temperature:25.2℃
 Operators:Dano
 Test Date:2022-09-07

γ Range: 0 - 180DEG
 γ Interval: 1.0DEG
 Test System:EVERFINE GO-R5000_V2 SYSTEM V2.00.459
 Humidity:55.3%
 Test Distance:2.900m [K=0.8817]
 Remarks:

UGR(Unified Glare Rating) Table

Test:U:120.2V I:0.1187A P:14.16W PF:0.9927 Freq:60.01Hz Lamp Flux:1285.2lx1 lm		
NAME: VN25-16-15S-952C5-MVTD-BN 4000K	TYPE:	WEIGHT:
SPEC.:	DIM.:	SERIAL No.:
MFR.: FOSHAN LEDKEY LIGHTING CO.,LTD.	SUR.:	Shielding Angle:

ceiling/cavity	0.7	0.7	0.5	0.5	0.3	0.7	0.7	0.5	0.5	0.3
walls	0.5	0.3	0.5	0.3	0.3	0.5	0.3	0.5	0.3	0.3
working plane	0.2	0.2	0.2	0.2	0.2	0.2	0.2	0.2	0.2	0.2

Room dimensions	Viewed crosswise					Viewed endwise				
x = 2H y = 2H	18.6	19.9	19.2	20.5	21.2	15.5	16.8	16.1	17.4	18.1
3H	21.6	22.9	22.2	23.5	24.2	17.0	18.2	17.6	18.8	19.5
4H	23.3	24.5	23.9	25.1	25.8	17.6	18.8	18.2	19.4	20.1
6H	25.2	26.3	25.8	26.9	27.7	18.0	19.2	18.7	19.8	20.5
8H	26.2	27.3	26.8	27.9	28.7	18.2	19.3	18.8	19.9	20.7
12H	27.4	28.4	28.0	29.1	29.9	18.3	19.3	18.9	20.0	20.7
4H 2H	19.1	20.3	19.8	20.9	21.7	17.0	18.2	17.6	18.8	19.5
3H	22.4	23.5	23.1	24.1	24.9	18.8	19.8	19.5	20.5	21.3
4H	24.3	25.3	25.0	25.9	26.7	19.6	20.6	20.3	21.3	22.1
6H	26.4	27.3	27.1	28.0	28.8	20.3	21.2	21.0	21.9	22.7
8H	27.6	28.4	28.3	29.1	29.9	20.6	21.4	21.3	22.1	22.9
12H	28.9	29.6	29.6	30.4	31.2	20.7	21.5	21.5	22.2	23.1
8H 4H	24.7	25.5	25.4	26.2	27.0	21.1	21.9	21.9	22.7	23.5
6H	27.1	27.8	27.8	28.5	29.4	22.3	22.9	23.0	23.7	24.6
8H	28.5	29.1	29.2	29.8	30.8	22.8	23.4	23.5	24.1	25.0
12H	30.1	30.6	30.8	31.4	32.3	23.2	23.7	23.9	24.5	25.4
12H 4H	24.7	25.4	25.4	26.1	27.0	21.6	22.4	22.4	23.1	24.0
6H	27.2	27.8	28.0	28.6	29.5	23.1	23.7	23.8	24.5	25.4
8H	28.7	29.2	29.5	30.0	31.0	23.8	24.3	24.6	25.1	26.0

Variations with the observer position at spacings(CIE Pub.117):		
S = 1.0H	+ 0.1 / - 0.1	+ 0.1 / - 0.1
1.5H	+ 0.2 / - 0.3	+ 0.2 / - 0.3
2.0H	+ 0.3 / - 0.4	+ 0.3 / - 0.4

CIE Pub.117, 1285 lm Total Lamp Luminous Flux Corrected (8log(F/F0) = 0.9)
Area: 0.0572555 m2

C Range: 0 - 360DEG
C Interval: 22.5DEG
Test Speed: HIGH
Temperature:25.2℃
Operators:Dano
Test Date:2022-09-07

γ Range: 0 - 180DEG
γ Interval: 1.0DEG
Test System:EVERFINE GO-R5000_V2 SYSTEM V2.00.459
Humidity:55.3%
Test Distance:2.900m [K=0.8817]
Remarks:

UTILIZATION FACTORS TABLE

Test:U:120.2V I:0.1187A P:14.16W PF:0.9927 Freq:60.01Hz Lamp Flux:1285.2lx1 lm		
NAME: VN25-16-15S-952C5-MVTD-BN 4000K	TYPE:	WEIGHT:
SPEC.:	DIM.:	SERIAL No.:
MFR.: FOSHAN LEDKEY LIGHTING CO.,LTD.	SUR.:	Shielding Angle:

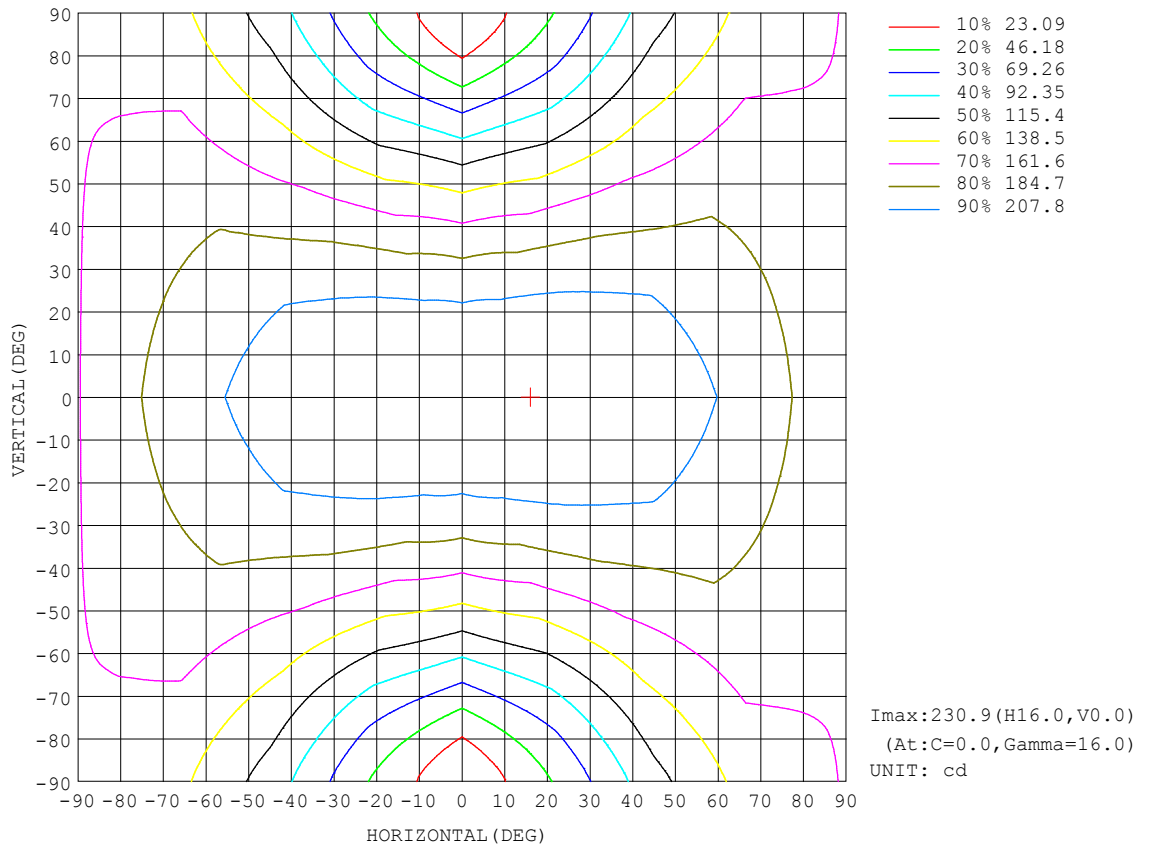
REFLECTANCE										
Ceiling	0.8	0.8	0.8	0.7	0.7	0.7	0.5	0.5	0.5	0
Walls	0.7	0.5	0.3	0.7	0.5	0.3	0.7	0.5	0.3	0
Working plane	0.2	0.2	0.2	0.2	0.2	0.2	0.2	0.2	0.2	0
ROOM INDEX	UTILIZATION FACTORS (PERCENT) $k(RI) \times RCR = 5$									
k = 0.60	45	32	25	44	32	25	42	31	24	17
0.80	54	40	32	52	40	32	49	38	31	23
1.00	61	48	39	59	47	39	56	47	37	28
1.25	68	55	46	66	54	45	61	51	43	33
1.50	74	61	52	71	59	50	65	55	48	37
2.00	81	69	60	78	67	59	71	63	56	43
2.50	86	75	66	82	72	64	75	67	60	47
3.00	89	79	71	86	76	69	78	71	65	50
4.00	94	86	79	90	82	76	82	76	71	55
5.00	98	90	84	93	86	81	85	79	75	58
ROOM INDEX	UF(total)									Direct
According to DIN EN 13032-2 2004			Suspended				SHRNOM = 1.25			

C Range: 0 - 360DEG
 C Interval: 22.5DEG
 Test Speed: HIGH
 Temperature: 25.2°C
 Operators: Dano
 Test Date: 2022-09-07

γ Range: 0 - 180DEG
 γ Interval: 1.0DEG
 Test System: EVERFINE GO-R5000_V2 SYSTEM V2.00.459
 Humidity: 55.3%
 Test Distance: 2.900m [K=0.8817]
 Remarks:

ISOCANDELA DIAGRAM

Test:U:120.2V I:0.1187A P:14.16W PF:0.9927 Freq:60.01Hz Lamp Flux:1285.2lx1 lm		
NAME: VN25-16-15S-952C5-MVTD-BN 4000K	TYPE:	WEIGHT:
SPEC.:	DIM.:	SERIAL No.:
MFR.: FOSHAN LEDKEY LIGHTING CO.,LTD.	SUR.:	Shielding Angle:



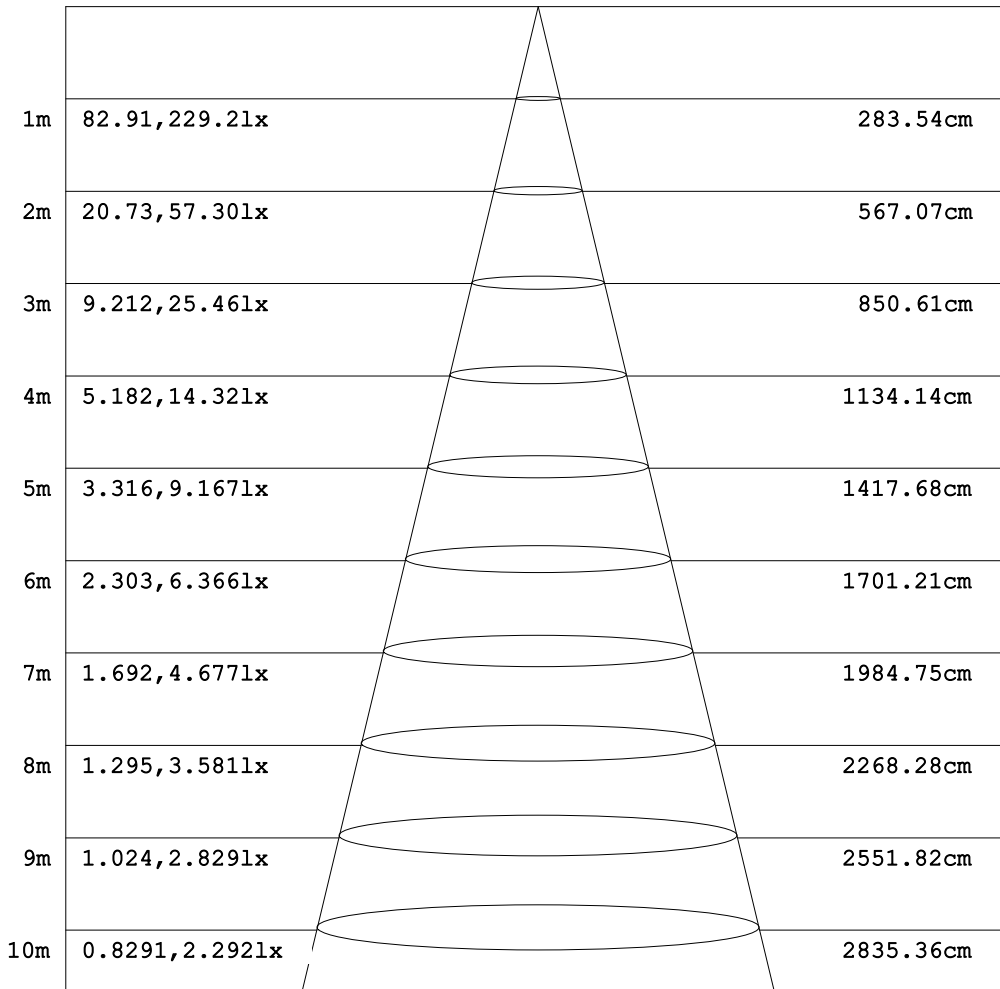
C Range: 0 - 360DEG
C Interval: 22.5DEG
Test Speed: HIGH
Temperature:25.2°C
Operators:Dano
Test Date:2022-09-07

γ Range: 0 - 180DEG
γ Interval: 1.0DEG
Test System:EVERFINE GO-R5000_V2 SYSTEM V2.00.459
Humidity:55.3%
Test Distance:2.900m [K=0.8817]
Remarks:

AAI Figure

Test:U:120.2V I:0.1187A P:14.16W PF:0.9927 Freq:60.01Hz Lamp Flux:1285.21x1 lm		
NAME: VN25-16-15S-952C5-MVTD-BN 4000K	TYPE:	WEIGHT:
SPEC.:	DIM.:	SERIAL No.:
MFR.: FOSHAN LEDKEY LIGHTING CO.,LTD.	SUR.:	Shielding Angle:

Flux out:531.3 lm



Height Eavg, Emax Angle:109.60deg Diameter

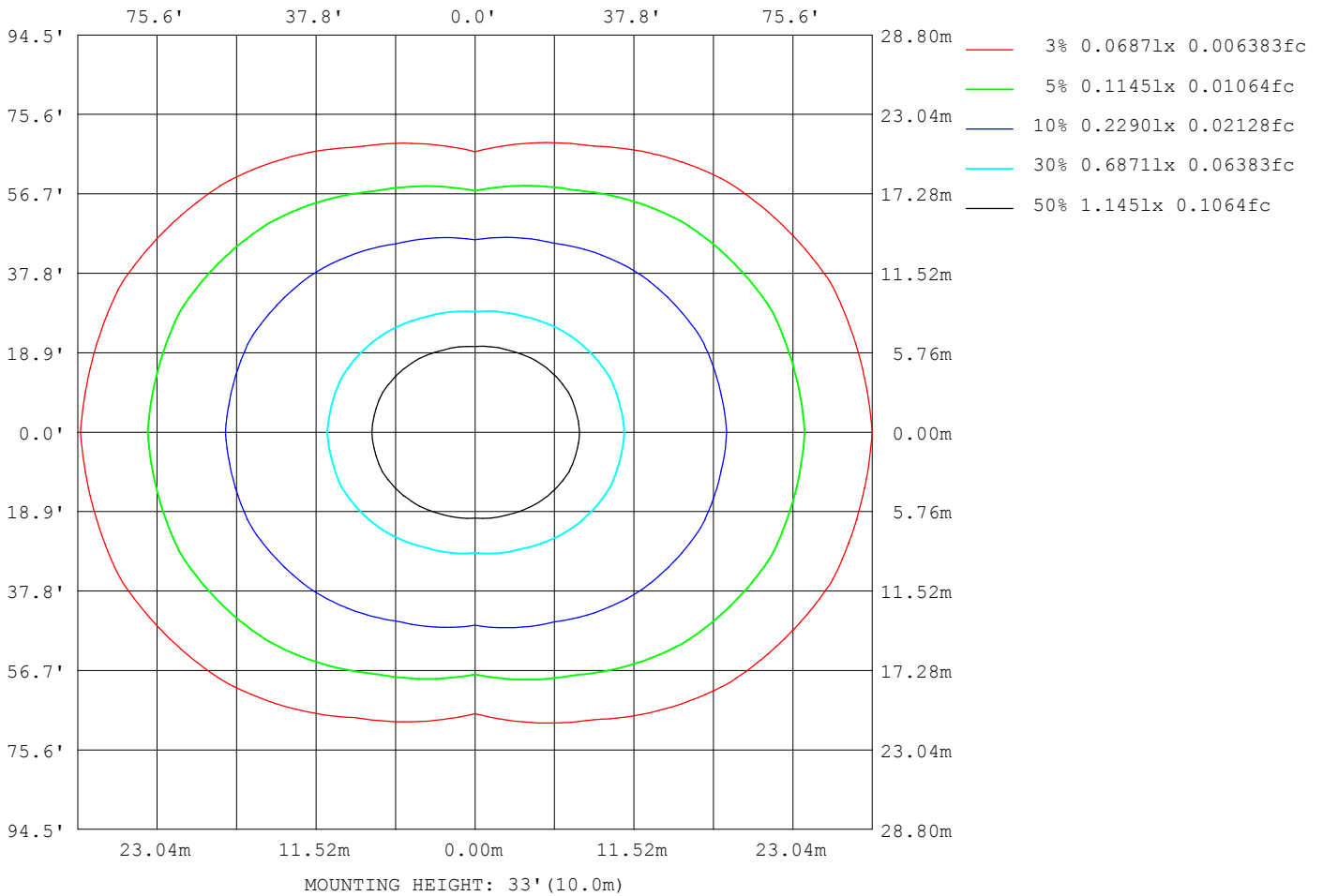
Note:The Curves indicate the illuminated area and the average illumination when the luminaire is at different distance.

C Range: 0 - 360DEG
C Interval: 22.5DEG
Test Speed: HIGH
Temperature:25.2°C
Operators:Dano
Test Date:2022-09-07

γ Range: 0 - 180DEG
γ Interval: 1.0DEG
Test System:EVERFINE GO-R5000_V2 SYSTEM V2.00.459
Humidity:55.3%
Test Distance:2.900m [K=0.8817]
Remarks:

ISOLUX DIAGRAM

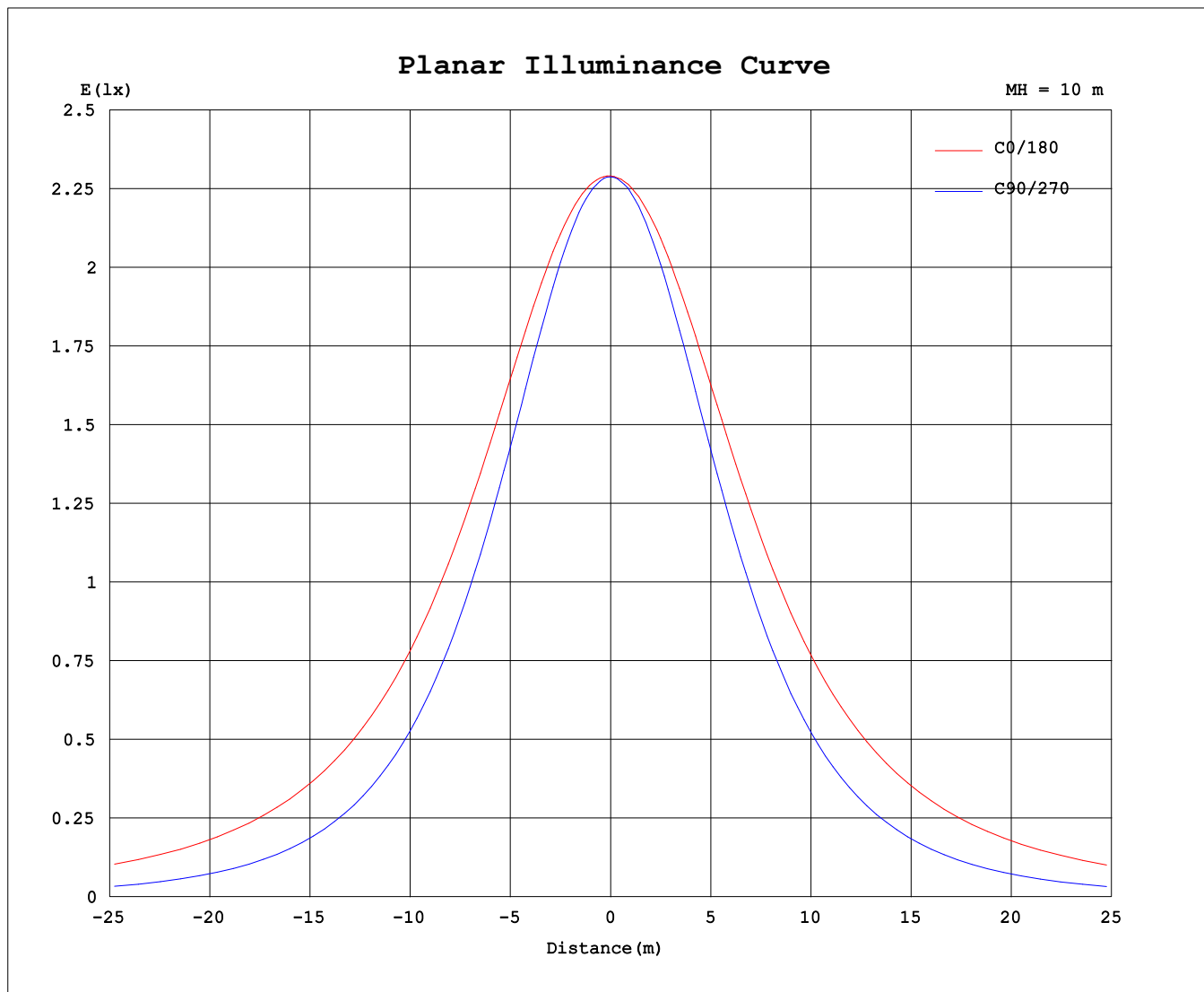
Test:U:120.2V I:0.1187A P:14.16W PF:0.9927 Freq:60.01Hz Lamp Flux:1285.2lx1 lm		
NAME: VN25-16-15S-952C5-MVTD-BN 4000K	TYPE:	WEIGHT:
SPEC.:	DIM.:	SERIAL No.:
MFR.: FOSHAN LEDKEY LIGHTING CO.,LTD.	SUR.:	Shielding Angle:



C Range: 0 - 360DEG
 C Interval: 22.5DEG
 Test Speed: HIGH
 Temperature:25.2°C
 Operators:Dano
 Test Date:2022-09-07

γ Range: 0 - 180DEG
 γ Interval: 1.0DEG
 Test System:EVERFINE GO-R5000_V2 SYSTEM V2.00.459
 Humidity:55.3%
 Test Distance:2.900m [K=0.8817]
 Remarks:

Planar Illuminance Curve



C Range: 0 - 360DEG
C Interval: 22.5DEG
Test Speed: HIGH
Temperature: 25.2°C
Operators: Dano
Test Date: 2022-09-07

γ Range: 0 - 180DEG
γ Interval: 1.0DEG
Test System: EVERFINE GO-R5000_V2 SYSTEM V2.00.459
Humidity: 55.3%
Test Distance: 2.900m [K=0.8817]
Remarks:

LUMINOUS DISTRIBUTION INTENSITY DATA

Test:U:120.2V I:0.1187A P:14.16W PF:0.9927 Freq:60.01Hz Lamp Flux:1285.2lx1 lm		
NAME: VN25-16-15S-952C5-MVTD-BN 4000K	TYPE:	WEIGHT:
SPEC.:	DIM.:	SERIAL No.:
MFR.: FOSHAN LEDKEY LIGHTING CO.,LTD.	SUR.:	Shielding Angle:

Table--1

UNIT: cd

C (DEG) \ γ (DEG)	0	22.5	45	67.5	90	112.5	135	157.5	180	202.5	225	247.5	270	292.5	315	337.5			
0	229	229	229	229	229	229	229	229	229	229	229	229	229	229	229	229			
5	229	229	229	228	228	228	228	229	229	229	228	228	228	228	229	229			
10	230	229	228	226	225	225	227	229	229	228	227	225	224	225	227	229			
15	231	229	226	222	220	221	224	228	229	227	224	220	219	221	225	229			
20	231	228	222	215	212	215	221	227	228	226	220	214	211	215	222	228			
25	230	227	218	208	203	207	216	225	228	224	216	206	202	207	217	227			
30	229	225	212	199	192	198	210	222	226	221	210	197	191	198	212	224			
35	227	221	206	188	179	187	204	219	224	218	203	186	178	187	205	221			
40	225	218	199	176	165	175	196	215	221	214	195	174	164	175	198	217			
45	221	213	190	163	149	162	188	210	217	209	187	161	148	162	189	212			
50	217	207	182	150	133	148	179	204	213	203	178	147	131	149	180	207			
55	212	202	172	135	115	134	169	198	208	197	168	133	113	134	171	201			
60	207	195	163	121	95.7	119	159	192	203	191	159	118	94.5	119	161	195			
65	202	189	153	106	76.4	104	150	185	198	185	149	103	75.3	105	152	188			
70	195	182	144	92.0	57.0	90.0	141	178	192	178	140	89.5	56.1	90.7	143	181			
75	188	174	135	79.0	38.5	76.9	132	171	185	170	131	76.5	37.7	77.7	133	173			
80	180	166	126	67.4	21.8	65.4	123	163	177	163	122	65.2	21.1	66.2	125	165			
85	172	157	117	57.5	8.83	55.4	114	154	169	154	114	55.4	7.95	56.4	116	157			
90	163	149	108	49.2	1.43	47.3	106	146	161	146	106	47.5	1.27	48.3	107	148			
95	154	140	100	43.0	1.51	41.7	98.6	139	153	139	98.6	42.0	1.37	42.2	99.3	139			
100	143	130	91.0	36.6	1.57	35.0	89.8	129	143	129	89.9	35.5	1.46	35.8	90.0	129			
105	131	118	81.4	30.3	1.56	28.6	79.8	118	132	118	80.0	29.1	1.50	29.5	80.5	118			
110	119	106	71.3	24.3	1.51	22.5	69.5	105	119	106	69.8	23.0	1.47	23.6	70.4	106			
115	105	93.7	61.2	18.6	1.44	16.7	59.2	92.5	105	92.9	59.8	17.3	1.41	17.9	60.4	93.6			
120	91.6	80.8	51.2	12.9	1.36	11.1	49.3	79.6	91.5	80.1	49.8	11.7	1.33	12.3	50.6	80.8			
125	77.7	68.0	41.3	7.77	1.27	5.99	39.6	66.8	77.7	67.3	40.1	6.49	1.24	6.94	41.0	68.1			
130	63.9	55.4	31.4	3.12	1.16	1.64	30.1	54.2	64.0	54.8	30.8	2.11	1.14	2.61	31.6	55.5			
135	50.5	43.1	22.6	1.28	1.03	1.08	20.9	41.9	50.7	42.8	22.0	1.20	1.05	1.28	22.3	43.2			
140	37.6	31.3	14.0	0.99	0.87	0.81	12.3	30.1	37.8	31.4	13.9	0.96	0.94	0.98	13.1	31.1			
145	25.3	19.3	6.14	0.77	0.74	0.69	4.44	18.8	25.3	20.8	6.96	0.81	0.83	0.83	3.82	19.2			
150	13.6	9.47	0.66	0.62	0.62	0.57	0.51	8.38	13.6	11.0	1.28	0.71	0.74	0.73	0.74	7.79			
155	3.19	0.75	0.48	0.53	0.54	0.49	0.39	0.32	3.08	2.05	0.50	0.61	0.67	0.66	0.60	0.56			
160	0.30	0.34	0.41	0.47	0.48	0.44	0.36	0.28	0.34	0.34	0.42	0.53	0.60	0.60	0.55	0.46			
165	0.29	0.32	0.38	0.43	0.44	0.40	0.34	0.29	0.33	0.33	0.39	0.46	0.53	0.54	0.50	0.44			
170	0.29	0.32	0.37	0.40	0.41	0.38	0.34	0.30	0.34	0.34	0.37	0.44	0.49	0.50	0.47	0.43			
175	0.31	0.34	0.37	0.39	0.39	0.37	0.35	0.33	0.33	0.33	0.35	0.39	0.43	0.45	0.43	0.39			
180	0.33	0.34	0.36	0.38	0.39	0.38	0.37	0.34	0.33	0.33	0.34	0.36	0.38	0.39	0.38	0.36			

C Range: 0 - 360DEG
 C Interval: 22.5DEG
 Test Speed: HIGH
 Temperature:25.2℃
 Operators:Dano
 Test Date:2022-09-07

γ Range: 0 - 180DEG
 γ Interval: 1.0DEG
 Test System:EVERFINE GO-R5000_V2 SYSTEM V2.00.459
 Humidity:55.3%
 Test Distance:2.900m [K=0.8817]
 Remarks: