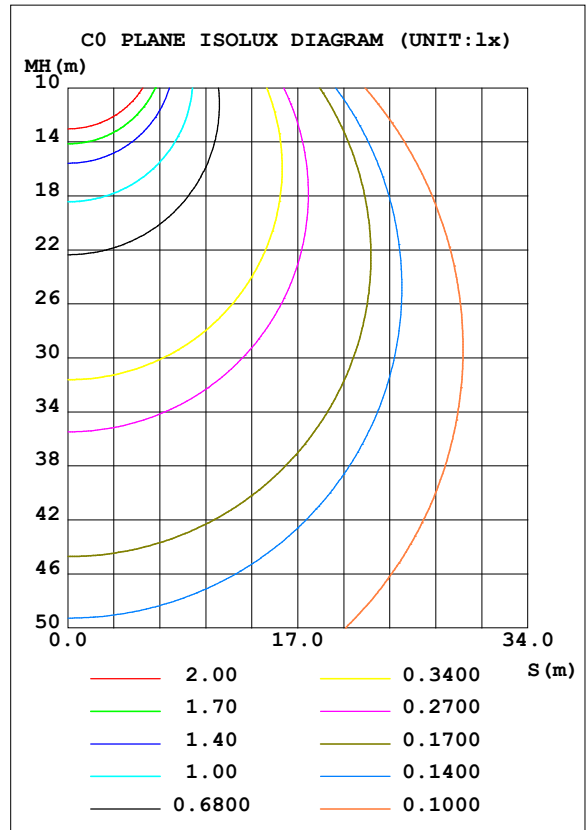
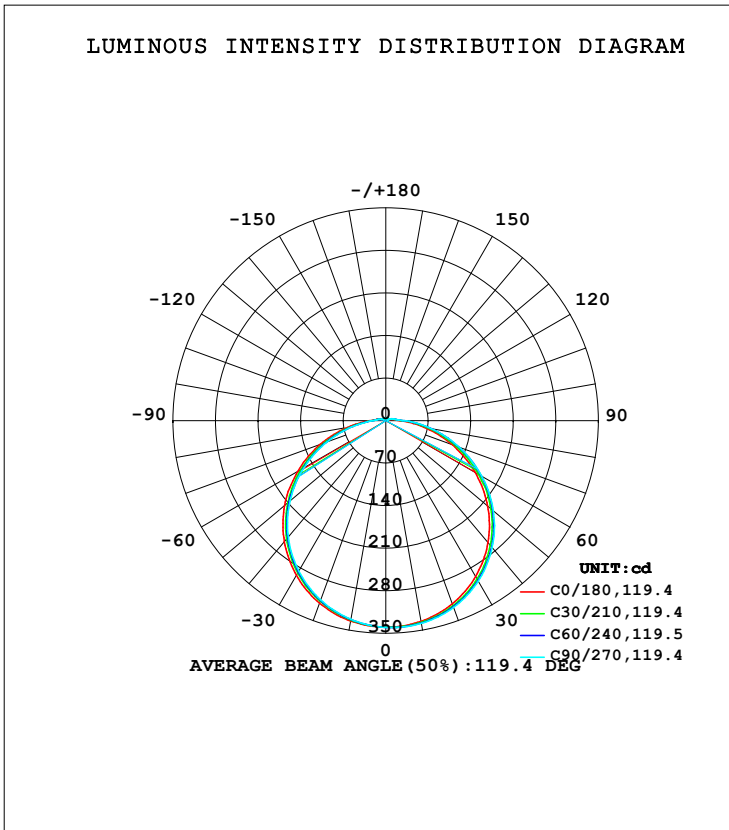


LUMINAIRE PHOTOMETRIC TEST REPORT

Test:U:120.5V I:0.2520A P:25.20W PF:0.8300 Freq:60.00Hz Lamp Flux:1135.63x1 lm		
NAME: AFX-DCF14-26DOB-95C-120D-BL1 整灯 (2700K)	TYPE:	WEIGHT:
SPEC.:	DIM.:	SERIAL No.:
MFR.: 革星	SUR.:14寸	Shielding Angle:

DATA OF LAMP		PHOTOMETRIC DATA Eff: 45.06 lm/W			
MODEL		I _{max} (cd)	340.8	S/MH (C0/180)	1.29
NOMINAL POWER (W)		LOR (%)	100.0	S/MH (C90/270)	1.25
RATED VOLTAGE (V)		TOTAL FLUX (lm)	1135.6	η UP, DN (C0-180)	2.3, 49.6
NOMINAL FLUX (lm)	1135.63	CIE CLASS	DIRECT	η UP, DN (C180-360)	2.2, 45.9
LAMPS INSIDE	1	η up (%)	4.5	CIBSE SHR NOM	1.50
TEST VOLTAGE (V)		η down (%)	95.5	CIBSE SHR MAX	1.50



C Range: 0 - 360DEG
 C Interval: 30.0DEG
 Test Speed: HIGH
 Temperature: 25.3DEG
 Operators:
 Test Date: 2023-05-02

γ Range: 0 - 180DEG
 γ Interval: 1.0DEG
 Test System: EVERFINE GO-2000B_V1 SYSTEM V2.0.362
 Humidity: 65.0%
 Test Distance: 7.020m [K=1.0000]
 Remarks:

ZONAL FLUX DIAGRAM

ZONAL FLUX DIAGRAM:

γ	C0	C45	C90	C135	C180	C225	C270	C315	γ	Φ zone	Φ total	%lum, lamp
10	335.3	337.5	338.6	337.1	334.6	332.6	331.8	333.3	0- 10	32.23	32.23	2.84,2.84
20	320.7	324.8	327.0	324.2	319.4	315.4	313.8	316.6	10- 20	92.90	125.1	11,11
30	295.9	302.1	304.5	300.9	294.1	288.7	286.3	290.1	20- 30	142.5	267.6	23.6,23.6
40	261.7	269.3	272.5	267.7	259.8	252.8	249.7	254.5	30- 40	174.8	442.4	39,39
50	219.0	227.8	231.3	226.1	217.6	209.2	205.9	211.2	40- 50	185.7	628.1	55.3,55.3
60	169.6	178.8	181.7	176.8	167.4	159.1	156.1	161.1	50- 60	173.7	801.8	70.6,70.6
70	116.5	125.8	128.9	123.9	114.9	106.6	103.4	108.4	60- 70	141.2	943.0	83,83
80	64.28	72.91	76.36	71.32	63.72	56.33	53.33	57.80	70- 80	94.81	1038	91.4,91.4
90	24.55	29.56	31.50	28.56	25.22	22.38	21.39	22.39	80- 90	47.01	1085	95.5,95.5
100	13.50	14.73	14.98	14.47	14.41	13.40	12.74	13.17	90-100	20.14	1105	97.3,97.3
110	7.036	8.893	8.210	8.346	7.630	7.329	6.474	7.570	100-110	11.37	1116	98.3,98.3
120	4.020	4.355	4.319	4.254	4.592	4.177	4.462	4.453	110-120	5.778	1122	98.8,98.8
130	3.970	3.490	3.636	3.795	4.385	4.166	4.555	4.461	120-130	3.623	1126	99.1,99.1
140	4.259	3.793	3.861	4.025	4.517	4.470	4.799	4.766	130-140	3.218	1129	99.4,99.4
150	4.590	4.269	4.134	4.266	4.658	4.751	5.060	4.695	140-150	2.770	1132	99.7,99.7
160	4.934	4.454	4.365	4.520	4.793	4.684	5.269	4.975	150-160	2.149	1134	99.8,99.8
170	4.999	4.327	4.304	4.449	4.651	4.509	4.550	4.915	160-170	1.331	1135	100,100
180	4.558	4.510	4.497	4.464	4.562	4.499	4.501	4.465	170-180	0.4313	1136	100,100
DEG	LUMINOUS INTENSITY:cd									UNIT:lm		

Conical surface Flux(90deg): 535.3 lm

%lum = 47.1%

%lamp = 47.1%

Conical surface Flux(120deg): 801.8 lm

%lum = 70.6%

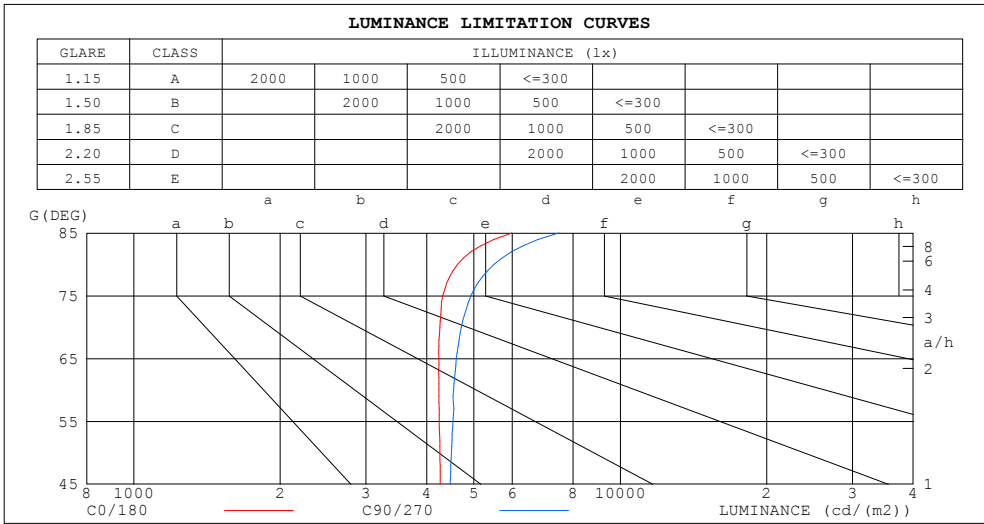
%lamp = 70.6%

C Range: 0 - 360DEG
 C Interval: 30.0DEG
 Test Speed: HIGH
 Temperature:25.3DEG
 Operators:
 Test Date:2023-05-02

γ Range: 0 - 180DEG
 γ Interval: 1.0DEG
 Test System:EVERFINE GO-2000B_V1 SYSTEM V2.0.362
 Humidity:65.0%
 Test Distance:7.020m [K=1.0000]
 Remarks:

LUMINANCE LIMITATION CURVES

Test:U:120.5V I:0.2520A P:25.20W PF:0.8300 Freq:60.00Hz Lamp Flux:1135.63x1 lm		
NAME: AFX-DCF14-26DOB-95C-120D-BL1 整灯 (2700K)	TYPE:	WEIGHT:
SPEC.:	DIM.:	SERIAL No.:
MFR.: 革星	SUR.:14寸	Shielding Angle:



LUMINANCE cd/(m2)		
G (DEG)	C0/180	C90/270
85	5990	7470
80	4627	5496
75	4319	4929
70	4260	4710
65	4238	4602
60	4239	4544
55	4247	4532
50	4259	4497
45	4266	4472

C Range: 0 - 360DEG
 C Interval: 30.0DEG
 Test Speed: HIGH
 Temperature:25.3DEG
 Operators:
 Test Date:2023-05-02

γ Range: 0 - 180DEG
 γ Interval: 1.0DEG
 Test System:EVERFINE GO-2000B_V1 SYSTEM V2.0.362
 Humidity:65.0%
 Test Distance:7.020m [K=1.0000]
 Remarks:

WEC AND CCEC

Test:U:120.5V I:0.2520A P:25.20W PF:0.8300 Freq:60.00Hz Lamp Flux:1135.63x1 lm		
NAME: AFX-DCF14-26DOB-95C-120D-BL1 整灯 (2700K)	TYPE:	WEIGHT:
SPEC.:	DIM.:	SERIAL No.:
MFR.: 革星	SUR.:14寸	Shielding Angle:

ρcc	80%			70%			50%			30%			10%			0
ρw	50%	30%	10%	50%	30%	10%	50%	30%	10%	50%	30%	10%	50%	30%	10%	0
ρfc	20%			20%			20%			20%			20%			0
RCR	RCR:Room Cavity Ratio						Wall Exitance Coefficients (WEC)									
0.0																
1.0	.343	.195	.062	.334	.191	.061	.318	.183	.058	.304	.175	.056	.290	.168	.054	
2.0	.311	.171	.052	.304	.167	.052	.289	.161	.050	.276	.155	.049	.264	.149	.047	
3.0	.283	.151	.045	.276	.148	.045	.264	.143	.043	.252	.138	.042	.241	.133	.041	
4.0	.258	.134	.039	.252	.132	.039	.241	.128	.038	.231	.124	.037	.221	.120	.037	
5.0	.237	.121	.035	.232	.119	.035	.222	.115	.034	.212	.112	.033	.203	.109	.033	
6.0	.219	.110	.031	.214	.108	.031	.205	.105	.031	.196	.102	.030	.188	.099	.029	
7.0	.203	.100	.028	.199	.099	.028	.190	.096	.028	.183	.094	.027	.175	.091	.027	
8.0	.189	.092	.026	.185	.091	.026	.177	.089	.025	.171	.086	.025	.164	.084	.025	
9.0	.177	.085	.024	.173	.084	.024	.166	.082	.023	.160	.080	.023	.154	.078	.023	
10.0	.166	.079	.022	.162	.078	.022	.156	.077	.022	.150	.075	.021	.145	.073	.021	

ρcc	80%			70%			50%			30%			10%			0
ρw	50%	30%	10%	50%	30%	10%	50%	30%	10%	50%	30%	10%	50%	30%	10%	0
ρfc	20%			20%			20%			20%			20%			0
RCR	RCR:Room Cavity Ratio						Ceiling Cavity Exitance Coefficients (CCEC)									
0.0	.225	.225	.225	.192	.192	.192	.131	.131	.131	.075	.075	.075	.024	.024	.024	
1.0	.217	.190	.166	.186	.163	.143	.127	.112	.099	.073	.065	.058	.023	.021	.019	
2.0	.209	.166	.130	.179	.143	.113	.123	.099	.079	.071	.058	.046	.023	.019	.015	
3.0	.202	.149	.107	.173	.129	.093	.119	.089	.065	.069	.052	.038	.022	.017	.013	
4.0	.194	.136	.092	.167	.118	.080	.115	.082	.056	.066	.048	.033	.021	.016	.011	
5.0	.187	.126	.081	.160	.109	.071	.110	.076	.050	.064	.045	.030	.021	.015	.010	
6.0	.179	.118	.074	.154	.102	.064	.106	.071	.045	.062	.042	.027	.020	.014	.009	
7.0	.172	.111	.068	.148	.096	.059	.102	.067	.042	.059	.040	.025	.019	.013	.008	
8.0	.166	.105	.064	.143	.091	.055	.099	.064	.039	.057	.038	.023	.019	.012	.008	
9.0	.159	.100	.060	.137	.087	.053	.095	.061	.037	.055	.036	.022	.018	.012	.007	
10.0	.154	.096	.058	.132	.083	.050	.092	.059	.036	.054	.035	.021	.017	.011	.007	

C Range: 0 - 360DEG
 C Interval: 30.0DEG
 Test Speed: HIGH
 Temperature:25.3DEG
 Operators:
 Test Date:2023-05-02

γ Range: 0 - 180DEG
 γ Interval: 1.0DEG
 Test System:EVERFINE GO-2000B_V1 SYSTEM V2.0.362
 Humidity:65.0%
 Test Distance:7.020m [K=1.0000]
 Remarks:

UGR(Unified Glare Rating) Table

Test:U:120.5V I:0.2520A P:25.20W PF:0.8300 Freq:60.00Hz Lamp Flux:1135.63x1 lm										
NAME: AFX-DCF14-26DOB-95C-120D-BL1 整灯 (2700K)					TYPE:			WEIGHT:		
SPEC.:					DIM.:			SERIAL No.:		
MFR.: 革星					SUR.:14寸			Shielding Angle:		
ceiling/cavity	0.7	0.7	0.5	0.5	0.3	0.7	0.7	0.5	0.5	0.3
walls	0.5	0.3	0.5	0.3	0.3	0.5	0.3	0.5	0.3	0.3
working plane	0.2	0.2	0.2	0.2	0.2	0.2	0.2	0.2	0.2	0.2
Room dimensions	Viewed crosswise					Viewed endwise				
x = 2H y = 2H	17.4	18.9	17.7	19.2	19.5	17.6	19.1	18.0	19.4	19.7
3H	19.1	20.5	19.5	20.9	21.2	19.5	20.9	19.9	21.2	21.6
4H	19.9	21.3	20.3	21.6	22.0	20.4	21.7	20.8	22.1	22.4
6H	20.7	21.9	21.1	22.3	22.7	21.2	22.5	21.6	22.9	23.2
8H	21.0	22.2	21.4	22.6	23.0	21.6	22.9	22.0	23.2	23.6
12H	21.3	22.5	21.7	22.9	23.3	22.0	23.2	22.5	23.6	24.0
4H 2H	18.1	19.4	18.5	19.8	20.1	18.3	19.6	18.7	20.0	20.3
3H	20.1	21.3	20.5	21.6	22.0	20.4	21.6	20.8	21.9	22.4
4H	21.0	22.1	21.5	22.5	23.0	21.4	22.5	21.9	22.9	23.3
6H	21.9	22.9	22.4	23.3	23.8	22.4	23.4	22.9	23.8	24.3
8H	22.3	23.2	22.8	23.7	24.2	22.9	23.8	23.4	24.3	24.8
12H	22.7	23.6	23.2	24.0	24.5	23.4	24.2	23.9	24.7	25.2
8H 4H	21.5	22.4	22.0	22.8	23.3	21.8	22.7	22.3	23.2	23.6
6H	22.6	23.3	23.1	23.8	24.4	23.0	23.8	23.6	24.3	24.8
8H	23.2	23.8	23.7	24.3	24.9	23.7	24.3	24.2	24.9	25.4
12H	23.7	24.3	24.3	24.8	25.4	24.4	24.9	24.9	25.5	26.0
12H 4H	21.5	22.4	22.0	22.8	23.3	21.9	22.7	22.4	23.2	23.7
6H	22.8	23.4	23.3	23.9	24.5	23.2	23.8	23.7	24.3	24.9
8H	23.4	24.0	23.9	24.5	25.1	23.9	24.5	24.4	25.0	25.6
Variations with the observer position at spacings:										
S = 1.0H	+ 0.1 / - 0.2					+ 0.1 / - 0.1				
1.5H	+ 0.2 / - 0.3					+ 0.2 / - 0.3				
2.0H	+ 0.1 / - 0.4					+ 0.1 / - 0.3				

CIE Pub.117, 1136 lm Total Lamp Luminous Flux Correct (8log(F/F0) = 0.4)

C Range: 0 - 360DEG
 C Interval: 30.0DEG
 Test Speed: HIGH
 Temperature:25.3DEG
 Operators:
 Test Date:2023-05-02

γ Range: 0 - 180DEG
 γ Interval: 1.0DEG
 Test System:EVERFINE GO-2000B_V1 SYSTEM V2.0.362
 Humidity:65.0%
 Test Distance:7.020m [K=1.0000]
 Remarks:

UTILIZATION FACTORS TABLE

Test:U:120.5V I:0.2520A P:25.20W PF:0.8300 Freq:60.00Hz Lamp Flux:1135.63x1 lm		
NAME: AFX-DCF14-26DOB-95C-120D-BL1 整灯 (2700K)	TYPE:	WEIGHT:
SPEC.:	DIM.:	SERIAL No.:
MFR.: 革星	SUR.:14寸	Shielding Angle:

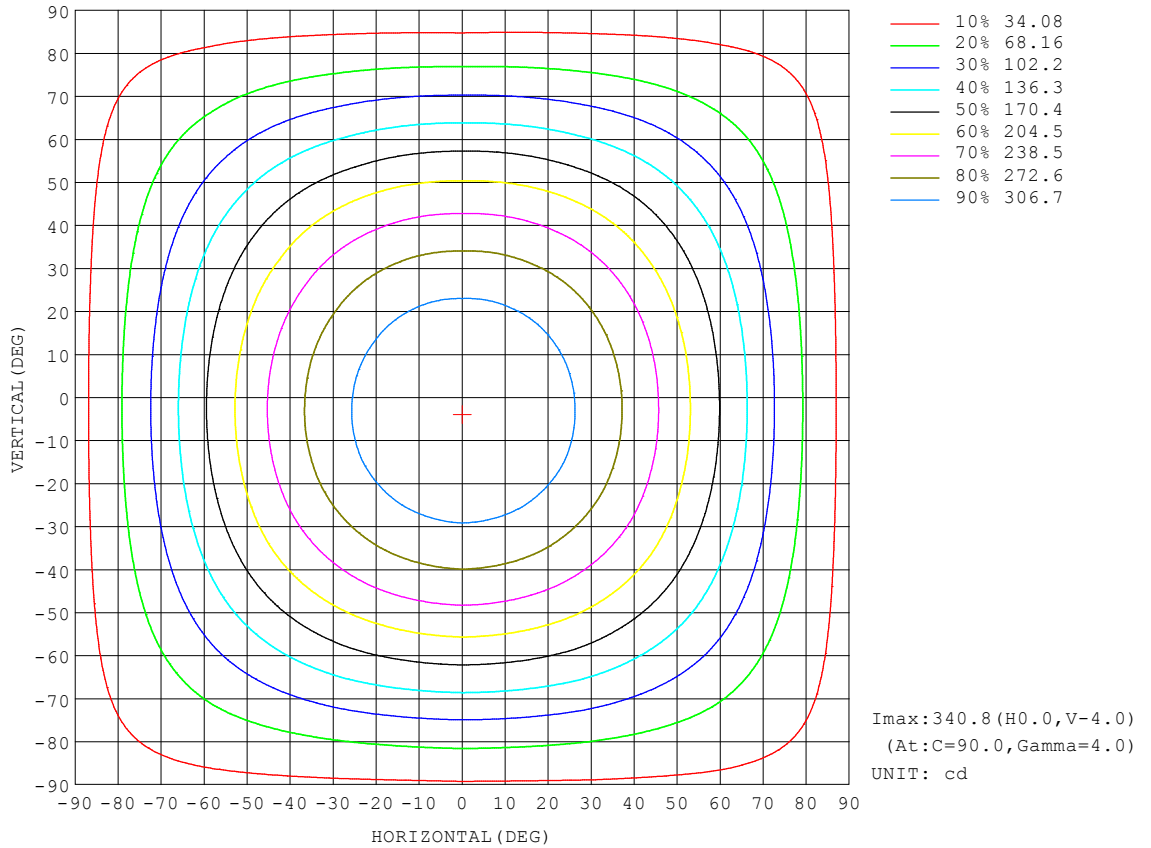
REFLECTANCE										
Ceiling	0.8	0.8	0.8	0.7	0.7	0.7	0.5	0.5	0.5	0
Walls	0.7	0.5	0.3	0.7	0.5	0.3	0.7	0.5	0.3	0
Working plane	0.2	0.2	0.2	0.2	0.2	0.2	0.2	0.2	0.2	0
ROOM INDEX	UTILIZATION FACTORS (PERCENT) $k(RI) \times RCR = 5$									
k = 0.60	54	42	35	53	42	35	52	41	35	28
0.80	64	52	44	63	51	44	61	50	43	36
1.00	72	60	53	71	60	52	68	61	52	44
1.25	79	68	60	77	67	60	74	65	59	51
1.50	84	73	66	82	72	65	79	70	64	56
2.00	91	82	75	89	80	74	85	78	72	63
2.50	95	87	80	93	85	79	89	82	77	67
3.00	99	91	85	96	89	84	92	86	81	71
4.00	103	97	91	100	95	90	95	91	87	76
5.00	106	100	96	103	98	94	98	94	90	79
ROOM INDEX	UF(total)									Direct
According to DIN EN 13032-2 2004			Suspended				SHRNOM = 1.25			

C Range: 0 - 360DEG
 C Interval: 30.0DEG
 Test Speed: HIGH
 Temperature:25.3DEG
 Operators:
 Test Date:2023-05-02

γ Range: 0 - 180DEG
 γ Interval: 1.0DEG
 Test System:EVERFINE GO-2000B_V1 SYSTEM V2.0.362
 Humidity:65.0%
 Test Distance:7.020m [K=1.0000]
 Remarks:

ISOCANDELA DIAGRAM

Test:U:120.5V I:0.2520A P:25.20W PF:0.8300 Freq:60.00Hz Lamp Flux:1135.63x1 lm		
NAME: AFX-DCF14-26DOB-95C-120D-BL1 整灯 (2700K)	TYPE:	WEIGHT:
SPEC.:	DIM.:	SERIAL No.:
MFR.: 革星	SUR.:14寸	Shielding Angle:

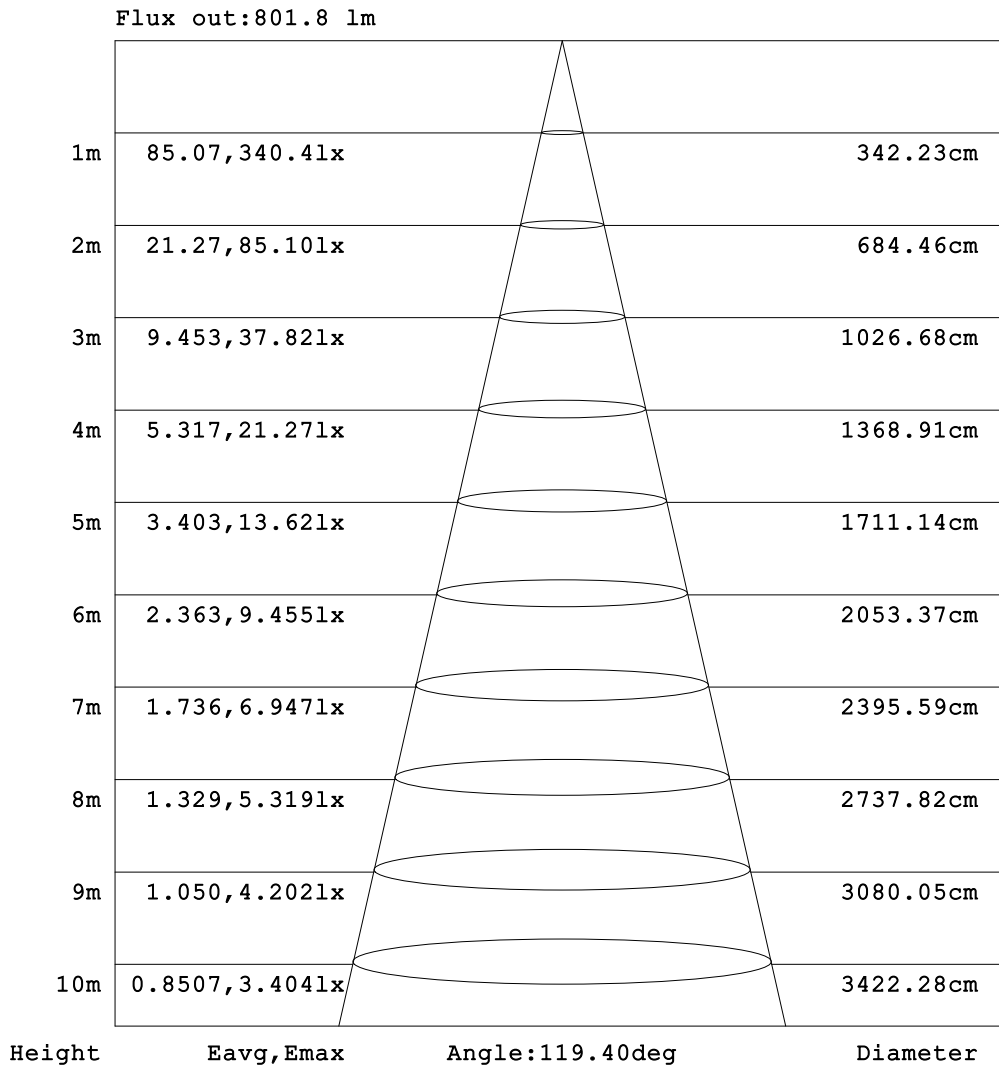


C Range: 0 - 360DEG
 C Interval: 30.0DEG
 Test Speed: HIGH
 Temperature: 25.3DEG
 Operators:
 Test Date: 2023-05-02

γ Range: 0 - 180DEG
 γ Interval: 1.0DEG
 Test System: EVERFINE GO-2000B_V1 SYSTEM V2.0.362
 Humidity: 65.0%
 Test Distance: 7.020m [K=1.0000]
 Remarks:

AAI Figure

Test:U:120.5V I:0.2520A P:25.20W PF:0.8300 Freq:60.00Hz Lamp Flux:1135.63x1 lm		
NAME: AFX-DCF14-26DOB-95C-120D-BL1 整灯 (2700K)	TYPE:	WEIGHT:
SPEC.:	DIM.:	SERIAL No.:
MFR.: 草星	SUR.:14寸	Shielding Angle:

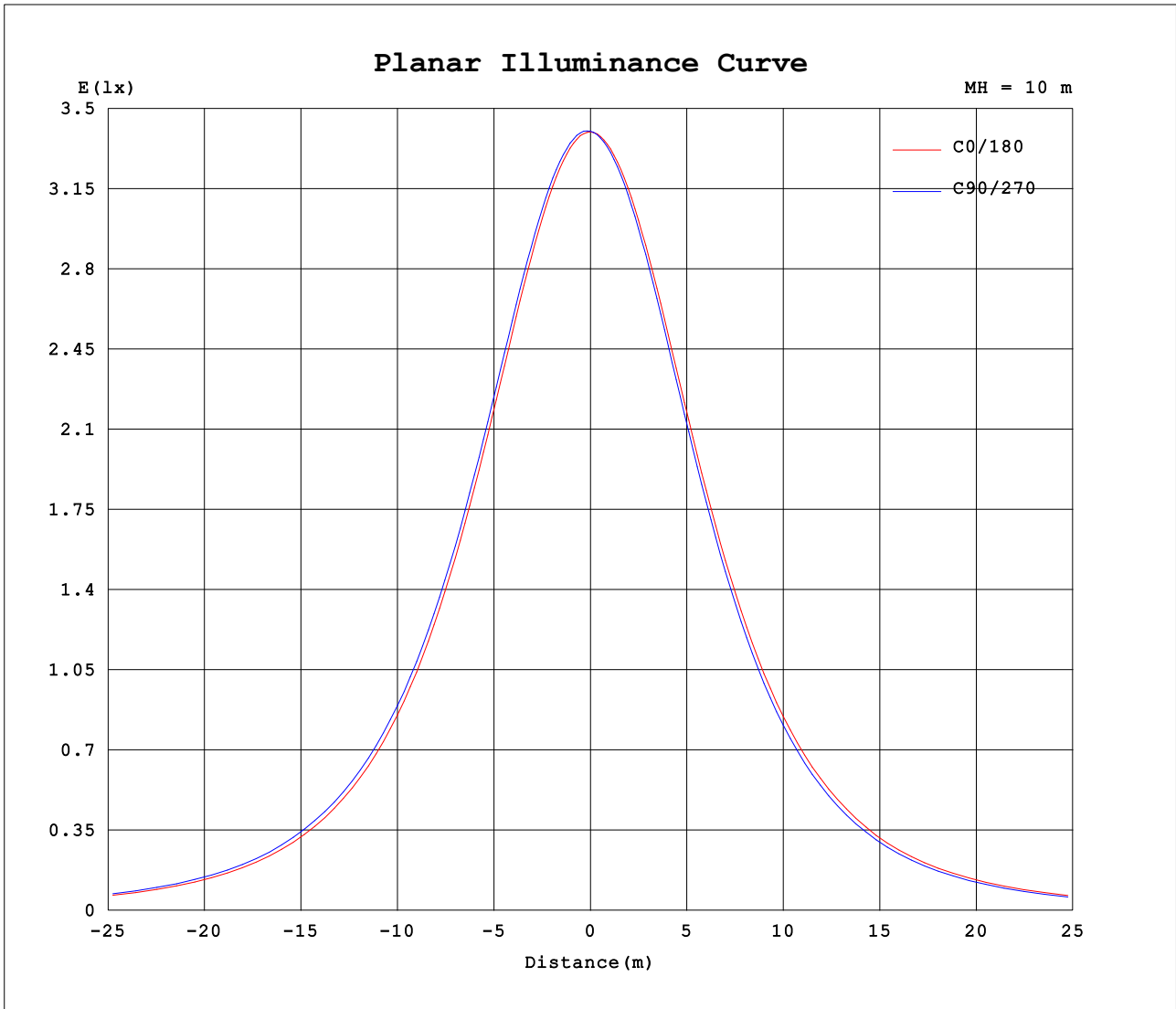


Note:The Curves indicate the illuminated area and the average illumination when the luminaire is at different distance.

C Range: 0 - 360DEG
 C Interval: 30.0DEG
 Test Speed: HIGH
 Temperature:25.3DEG
 Operators:
 Test Date:2023-05-02

γ Range: 0 - 180DEG
 γ Interval: 1.0DEG
 Test System:EVERFINE GO-2000B_V1 SYSTEM V2.0.362
 Humidity:65.0%
 Test Distance:7.020m [K=1.0000]
 Remarks:

Planar Illuminance Curve



C Range: 0 - 360DEG
 C Interval: 30.0DEG
 Test Speed: HIGH
 Temperature: 25.3DEG
 Operators:
 Test Date: 2023-05-02

γ Range: 0 - 180DEG
 γ Interval: 1.0DEG
 Test System: EVERFINE GO-2000B_V1 SYSTEM V2.0.362
 Humidity: 65.0%
 Test Distance: 7.020m [K=1.0000]
 Remarks:

LUMINOUS DISTRIBUTION INTENSITY DATA

Test:U:120.5V I:0.2520A P:25.20W PF:0.8300 Freq:60.00Hz Lamp Flux:1135.63x1 lm		
NAME: AFX-DCF14-26DOB-95C-120D-BL1 整灯 (2700K)	TYPE:	WEIGHT:
SPEC.:	DIM.:	SERIAL No.:
MFR.: 革星	SUR.:14寸	Shielding Angle:

Table--1

UNIT: cd

C (DEG) \ γ (DEG)	0	30	60	90	120	150	180	210	240	270	300	330							
0	340	340	340	340	340	340	340	340	340	340	340	340							
5	339	340	340	341	340	340	338	338	337	337	338	338							
10	335	337	338	339	338	336	335	333	332	332	333	334							
15	329	332	333	334	333	331	328	326	325	324	325	327							
20	321	324	326	327	325	323	319	316	315	314	315	318							
25	310	314	316	317	315	312	308	304	302	301	303	306							
30	296	301	303	304	303	299	294	290	288	286	288	292							
35	280	285	288	290	287	284	278	273	270	269	271	275							
40	262	268	271	272	270	266	260	254	251	250	252	257							
45	241	248	251	253	250	246	240	233	230	229	232	236							
50	219	226	230	231	228	224	218	211	208	206	209	213							
55	195	202	206	208	205	200	193	186	182	182	184	189							
60	170	176	181	182	180	174	167	161	157	156	159	164							
65	143	150	155	156	153	148	141	135	131	130	132	137							
70	117	123	128	129	127	121	115	109	105	103	106	111							
75	89.4	96.5	101	102	99.4	94.7	88.7	82.1	79.0	77.2	80.2	84.2							
80	64.3	70.9	74.9	76.4	73.2	69.4	63.7	57.7	55.0	53.3	56.1	59.5							
85	41.8	47.5	51.0	52.1	49.4	46.1	41.2	36.3	34.3	33.0	35.0	37.8							
90	24.5	28.4	30.7	31.5	29.6	27.5	25.2	22.8	21.9	21.4	22.0	22.8							
95	16.9	18.5	19.5	19.6	18.9	18.4	18.1	17.2	16.7	16.3	16.5	16.7							
100	13.5	14.4	15.0	15.0	14.6	14.3	14.4	13.6	13.2	12.7	13.0	13.3							
105	10.2	11.2	12.1	11.7	11.1	11.4	11.0	10.3	9.90	8.70	10.0	10.3							
110	7.04	8.47	9.32	8.21	8.11	8.58	7.63	7.58	7.08	6.47	7.52	7.62							
115	5.11	6.05	6.67	5.94	5.81	6.05	5.77	5.44	5.02	5.02	5.56	5.55							
120	4.02	4.22	4.50	4.32	4.23	4.27	4.59	4.19	4.17	4.46	4.45	4.46							
125	3.86	3.50	3.46	3.63	3.72	3.76	4.34	4.06	4.19	4.48	4.22	4.43							
130	3.97	3.57	3.41	3.64	3.76	3.83	4.38	4.06	4.27	4.56	4.41	4.52							
135	4.11	3.74	3.48	3.73	3.87	3.94	4.45	4.18	4.42	4.67	4.64	4.63							
140	4.26	3.96	3.63	3.86	4.00	4.05	4.52	4.35	4.59	4.80	4.81	4.73							
145	4.42	4.17	3.83	3.99	4.11	4.17	4.59	4.53	4.77	4.93	4.93	4.52							
150	4.59	4.39	4.14	4.13	4.24	4.29	4.66	4.57	4.93	5.06	5.05	4.34							
155	4.77	4.61	4.36	4.28	4.37	4.41	4.74	4.43	5.05	5.18	5.16	4.50							
160	4.93	4.82	4.09	4.37	4.50	4.54	4.79	4.52	4.85	5.27	5.27	4.68							
165	5.06	4.74	4.15	4.32	4.53	4.58	4.77	4.55	4.46	5.33	5.33	4.88							
170	5.00	4.36	4.30	4.30	4.42	4.48	4.65	4.52	4.50	4.55	5.16	4.67							
175	4.54	4.45	4.41	4.41	4.37	4.38	4.57	4.52	4.51	4.52	4.58	4.53							
180	4.56	4.52	4.50	4.50	4.46	4.47	4.56	4.51	4.48	4.50	4.47	4.46							

C Range: 0 - 360DEG
 C Interval: 30.0DEG
 Test Speed: HIGH
 Temperature:25.3DEG
 Operators:
 Test Date:2023-05-02

γ Range: 0 - 180DEG
 γ Interval: 1.0DEG
 Test System:EVERFINE GO-2000B_V1 SYSTEM V2.0.362
 Humidity:65.0%
 Test Distance:7.020m [K=1.0000]
 Remarks: