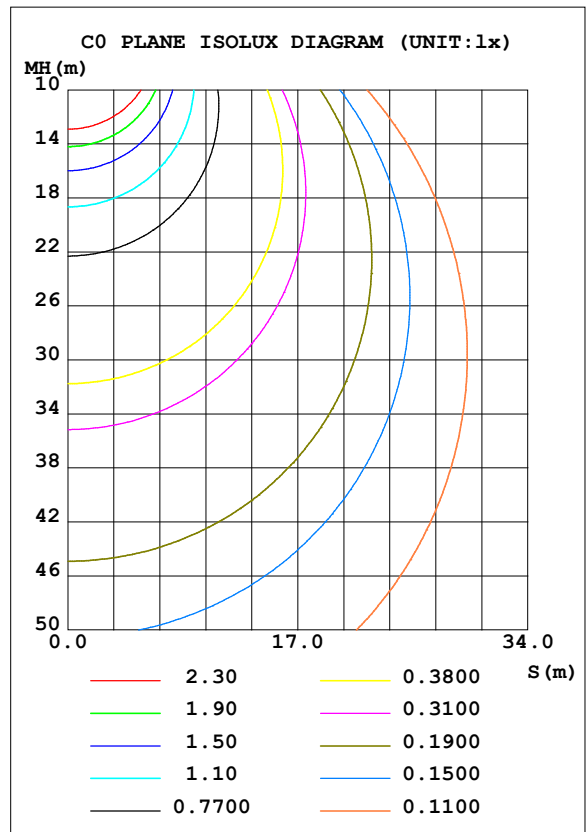
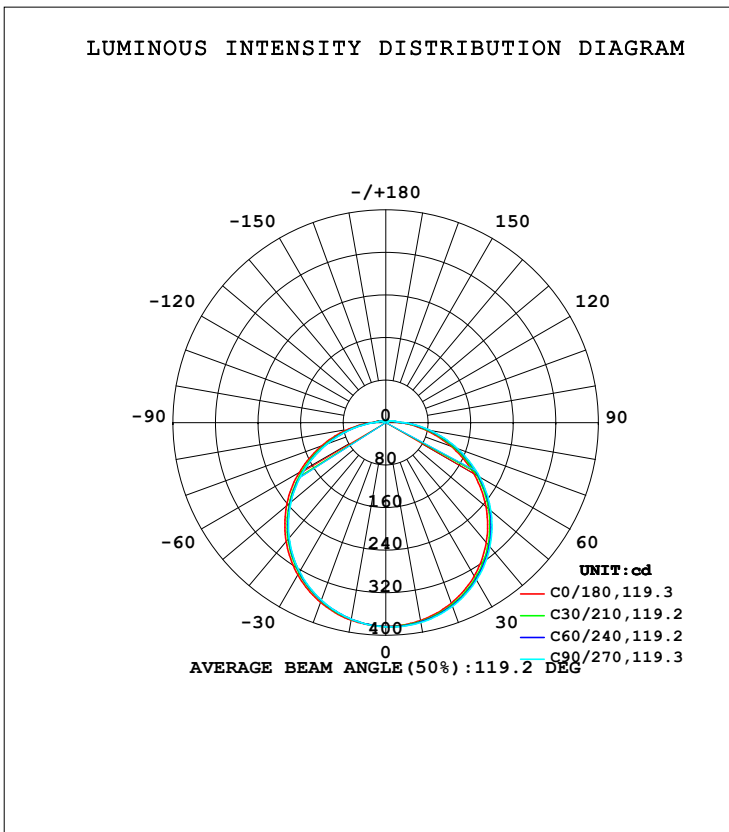


LUMINAIRE PHOTOMETRIC TEST REPORT

Test:U:120.5V I:0.2520A P:25.20W PF:0.8280 Freq:60.00Hz Lamp Flux:1276.6x1 lm		
NAME: AFX-DCF14-26DOB-95C-120D-BL1 整灯 (5000K)	TYPE:	WEIGHT:
SPEC.:	DIM.:	SERIAL No.:
MFR.: 革星	SUR.:14寸	Shielding Angle:

DATA OF LAMP		PHOTOMETRIC DATA Eff: 50.66 lm/W			
MODEL		I _{max} (cd)	384.5	S/MH (C0/180)	1.28
NOMINAL POWER (W)		LOR (%)	100.0	S/MH (C90/270)	1.26
RATED VOLTAGE (V)		TOTAL FLUX (lm)	1276.6	η UP, DN (C0-180)	2.3, 49.5
NOMINAL FLUX (lm)	1276.6	CIE CLASS	DIRECT	η UP, DN (C180-360)	2.1, 46.1
LAMPS INSIDE	1	η up (%)	4.4	CIBSE SHR NOM	1.50
TEST VOLTAGE (V)		η down (%)	95.6	CIBSE SHR MAX	1.50



C Range: 0 - 360DEG
 C Interval: 30.0DEG
 Test Speed: HIGH
 Temperature: 25.3DEG
 Operators:
 Test Date: 2023-05-03

γ Range: 0 - 180DEG
 γ Interval: 1.0DEG
 Test System: EVERFINE GO-2000B_V1 SYSTEM V2.0.362
 Humidity: 65.0%
 Test Distance: 7.020m [K=1.0000]
 Remarks:

ZONAL FLUX DIAGRAM

ZONAL FLUX DIAGRAM:

γ	C0	C45	C90	C135	C180	C225	C270	C315	γ	Φ zone	Φ total	%lum, lamp
10	377.7	379.9	381.5	380.5	377.1	375.5	375.2	376.8	0- 10	36.36	36.36	2.85,2.85
20	361.3	365.2	367.5	365.4	359.5	356.1	355.0	358.0	10- 20	104.8	141.1	11.1,11.1
30	333.0	338.7	341.7	338.3	330.7	325.7	324.2	328.0	20- 30	160.5	301.7	23.6,23.6
40	294.0	301.2	304.7	300.5	291.7	285.0	282.8	287.8	30- 40	196.7	498.3	39,39
50	246.1	254.5	258.1	253.6	243.9	235.6	233.1	239.0	40- 50	208.7	707.1	55.4,55.4
60	190.9	200.2	203.9	199.2	187.8	179.1	176.8	182.5	50- 60	195.4	902.5	70.7,70.7
70	131.2	140.0	143.5	139.1	128.7	119.8	117.2	123.0	60- 70	158.7	1061	83.1,83.1
80	72.39	80.52	84.47	80.17	71.14	62.96	60.55	65.62	70- 80	106.5	1168	91.5,91.5
90	27.44	32.12	34.87	32.22	27.85	24.10	23.03	24.88	80- 90	52.40	1220	95.6,95.6
100	15.10	16.09	17.07	16.75	16.10	14.40	13.60	14.48	90-100	22.24	1242	97.3,97.3
110	8.017	9.822	9.511	9.973	8.816	8.064	7.250	8.485	100-110	12.71	1255	98.3,98.3
120	4.445	5.109	5.026	5.162	5.206	4.625	4.922	4.980	110-120	6.618	1262	98.8,98.8
130	4.388	3.846	4.051	4.213	4.861	4.649	5.028	4.895	120-130	4.063	1266	99.1,99.1
140	4.693	4.177	4.276	4.454	4.996	4.986	5.291	5.213	130-140	3.559	1269	99.4,99.4
150	5.075	4.703	4.581	4.727	5.147	5.279	5.587	5.200	140-150	3.062	1272	99.7,99.7
160	5.458	4.930	4.851	5.012	5.301	5.211	5.825	5.595	150-160	2.381	1275	99.8,99.8
170	5.523	4.787	4.777	4.954	5.159	5.020	5.061	5.505	160-170	1.478	1276	100,100
180	5.057	5.002	5.002	4.971	5.057	5.013	4.986	4.967	170-180	0.4799	1277	100,100
DEG	LUMINOUS INTENSITY:cd									UNIT:lm		

Conical surface Flux(90deg): 602.78 lm

%lum = 47.2%

%lamp = 47.2%

Conical surface Flux(120deg): 902.49 lm

%lum = 70.7%

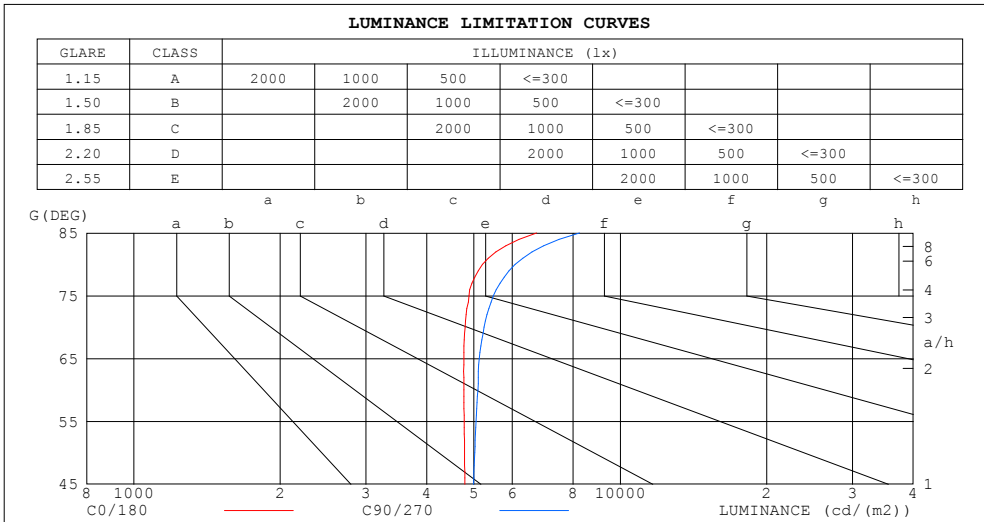
%lamp = 70.7%

C Range: 0 - 360DEG
 C Interval: 30.0DEG
 Test Speed: HIGH
 Temperature:25.3DEG
 Operators:
 Test Date:2023-05-03

γ Range: 0 - 180DEG
 γ Interval: 1.0DEG
 Test System:EVERFINE GO-2000B_V1 SYSTEM V2.0.362
 Humidity:65.0%
 Test Distance:7.020m [K=1.0000]
 Remarks:

LUMINANCE LIMITATION CURVES

Test:U:120.5V I:0.2520A P:25.20W PF:0.8280 Freq:60.00Hz Lamp Flux:1276.6x1 lm		
NAME: AFX-DCF14-26DOB-95C-120D-BL1 整灯 (5000K)	TYPE:	WEIGHT:
SPEC.:	DIM.:	SERIAL No.:
MFR.: 革星	SUR.:14寸	Shielding Angle:



C Range: 0 - 360DEG
 C Interval: 30.0DEG
 Test Speed: HIGH
 Temperature:25.3DEG
 Operators:
 Test Date:2023-05-03

γ Range: 0 - 180DEG
 γ Interval: 1.0DEG
 Test System:EVERFINE GO-2000B_V1 SYSTEM V2.0.362
 Humidity:65.0%
 Test Distance:7.020m [K=1.0000]
 Remarks:

WEC AND CCEC

Test:U:120.5V I:0.2520A P:25.20W PF:0.8280 Freq:60.00Hz Lamp Flux:1276.6x1 lm		
NAME: AFX-DCF14-26DOB-95C-120D-BL1 整灯 (5000K)	TYPE:	WEIGHT:
SPEC.:	DIM.:	SERIAL No.:
MFR.: 革星	SUR.:14寸	Shielding Angle:

ρcc	80%			70%			50%			30%			10%			0
ρw	50%	30%	10%	50%	30%	10%	50%	30%	10%	50%	30%	10%	50%	30%	10%	0
ρfc	20%			20%			20%			20%			20%			0
RCR	RCR:Room Cavity Ratio						Wall Exitance Coefficients(WEC)									
0.0																
1.0	.342	.195	.062	.334	.190	.060	.318	.182	.058	.303	.175	.056	.290	.168	.054	
2.0	.311	.170	.052	.303	.167	.051	.289	.161	.050	.276	.155	.048	.264	.149	.047	
3.0	.283	.151	.045	.276	.148	.045	.263	.143	.043	.252	.138	.042	.241	.133	.041	
4.0	.258	.134	.039	.252	.132	.039	.241	.128	.038	.230	.124	.037	.221	.120	.037	
5.0	.237	.121	.035	.232	.119	.035	.222	.115	.034	.212	.112	.033	.203	.109	.033	
6.0	.219	.110	.031	.214	.108	.031	.205	.105	.031	.196	.102	.030	.188	.099	.029	
7.0	.203	.100	.028	.198	.099	.028	.190	.096	.028	.183	.094	.027	.175	.091	.027	
8.0	.189	.092	.026	.185	.091	.026	.177	.089	.025	.170	.086	.025	.164	.084	.025	
9.0	.176	.085	.024	.173	.084	.024	.166	.082	.023	.160	.080	.023	.154	.078	.023	
10.0	.166	.079	.022	.162	.078	.022	.156	.077	.022	.150	.075	.021	.145	.073	.021	

ρcc	80%			70%			50%			30%			10%			0
ρw	50%	30%	10%	50%	30%	10%	50%	30%	10%	50%	30%	10%	50%	30%	10%	0
ρfc	20%			20%			20%			20%			20%			0
RCR	RCR:Room Cavity Ratio						Ceiling Cavity Exitance Coefficients(CCEC)									
0.0	.224	.224	.224	.192	.192	.192	.131	.131	.131	.075	.075	.075	.024	.024	.024	
1.0	.217	.190	.166	.185	.163	.143	.127	.112	.099	.073	.065	.057	.023	.021	.019	
2.0	.209	.166	.130	.179	.143	.112	.123	.099	.078	.071	.058	.046	.023	.019	.015	
3.0	.201	.149	.107	.173	.128	.093	.119	.089	.065	.068	.052	.038	.022	.017	.013	
4.0	.194	.136	.092	.166	.117	.080	.114	.082	.056	.066	.048	.033	.021	.016	.011	
5.0	.186	.126	.081	.160	.109	.070	.110	.076	.050	.064	.045	.029	.021	.015	.010	
6.0	.179	.117	.073	.154	.102	.064	.106	.071	.045	.062	.042	.027	.020	.014	.009	
7.0	.172	.111	.068	.148	.096	.059	.102	.067	.042	.059	.040	.025	.019	.013	.008	
8.0	.165	.105	.063	.142	.091	.055	.098	.064	.039	.057	.038	.023	.019	.012	.008	
9.0	.159	.100	.060	.137	.087	.052	.095	.061	.037	.055	.036	.022	.018	.012	.007	
10.0	.153	.096	.057	.132	.083	.050	.092	.058	.036	.053	.035	.021	.017	.011	.007	

C Range: 0 - 360DEG
 C Interval: 30.0DEG
 Test Speed: HIGH
 Temperature:25.3DEG
 Operators:
 Test Date:2023-05-03

γ Range: 0 - 180DEG
 γ Interval: 1.0DEG
 Test System:EVERFINE GO-2000B_V1 SYSTEM V2.0.362
 Humidity:65.0%
 Test Distance:7.020m [K=1.0000]
 Remarks:

UGR(Unified Glare Rating) Table

Test:U:120.5V I:0.2520A P:25.20W PF:0.8280 Freq:60.00Hz Lamp Flux:1276.6x1 lm										
NAME: AFX-DCF14-26DOB-95C-120D-BL1 整灯 (5000K)					TYPE:			WEIGHT:		
SPEC.:					DIM.:			SERIAL No.:		
MFR.: 革星					SUR.:14寸			Shielding Angle:		
ceiling/cavity	0.7	0.7	0.5	0.5	0.3	0.7	0.7	0.5	0.5	0.3
walls	0.5	0.3	0.5	0.3	0.3	0.5	0.3	0.5	0.3	0.3
working plane	0.2	0.2	0.2	0.2	0.2	0.2	0.2	0.2	0.2	0.2
Room dimensions	Viewed crosswise					Viewed endwise				
x = 2H y = 2H	17.4	18.9	17.7	19.1	19.4	17.6	19.1	17.9	19.4	19.7
3H	19.1	20.5	19.5	20.8	21.2	19.5	20.9	19.8	21.2	21.5
4H	19.9	21.3	20.3	21.6	22.0	20.4	21.7	20.7	22.0	22.4
6H	20.7	21.9	21.1	22.3	22.6	21.2	22.4	21.6	22.8	23.2
8H	21.0	22.2	21.4	22.6	23.0	21.6	22.8	22.0	23.1	23.5
12H	21.3	22.5	21.7	22.8	23.3	22.0	23.1	22.4	23.5	23.9
4H 2H	18.1	19.4	18.5	19.7	20.1	18.3	19.6	18.6	19.9	20.3
3H	20.1	21.2	20.5	21.6	22.0	20.3	21.5	20.8	21.9	22.3
4H	21.0	22.1	21.5	22.5	22.9	21.4	22.4	21.8	22.8	23.3
6H	21.9	22.9	22.4	23.3	23.8	22.4	23.3	22.8	23.8	24.2
8H	22.3	23.2	22.8	23.7	24.1	22.8	23.7	23.3	24.2	24.7
12H	22.7	23.5	23.2	24.0	24.5	23.3	24.2	23.8	24.6	25.1
8H 4H	21.4	22.3	21.9	22.8	23.3	21.7	22.6	22.2	23.1	23.6
6H	22.6	23.3	23.1	23.8	24.3	23.0	23.7	23.5	24.2	24.7
8H	23.1	23.8	23.6	24.3	24.8	23.6	24.3	24.1	24.8	25.3
12H	23.7	24.3	24.2	24.8	25.4	24.2	24.8	24.8	25.4	25.9
12H 4H	21.5	22.3	22.0	22.8	23.3	21.8	22.6	22.3	23.1	23.6
6H	22.7	23.4	23.2	23.9	24.4	23.1	23.8	23.6	24.3	24.8
8H	23.4	23.9	23.9	24.5	25.0	23.8	24.4	24.3	24.9	25.5
Variations with the observer position at spacings:										
S = 1.0H	+ 0.1 / - 0.2					+ 0.1 / - 0.1				
1.5H	+ 0.2 / - 0.3					+ 0.2 / - 0.3				
2.0H	+ 0.1 / - 0.4					+ 0.1 / - 0.3				

CIE Pub.117, 1277 lm Total Lamp Luminous Flux Correct (8log(F/F0) = 0.8)

C Range: 0 - 360DEG
 C Interval: 30.0DEG
 Test Speed: HIGH
 Temperature:25.3DEG
 Operators:
 Test Date:2023-05-03

γ Range: 0 - 180DEG
 γ Interval: 1.0DEG
 Test System:EVERFINE GO-2000B_V1 SYSTEM V2.0.362
 Humidity:65.0%
 Test Distance:7.020m [K=1.0000]
 Remarks:

UTILIZATION FACTORS TABLE

Test:U:120.5V I:0.2520A P:25.20W PF:0.8280 Freq:60.00Hz Lamp Flux:1276.6x1 lm		
NAME: AFX-DCF14-26DOB-95C-120D-BL1 整灯 (5000K)	TYPE:	WEIGHT:
SPEC.:	DIM.:	SERIAL No.:
MFR.: 革星	SUR.:14寸	Shielding Angle:

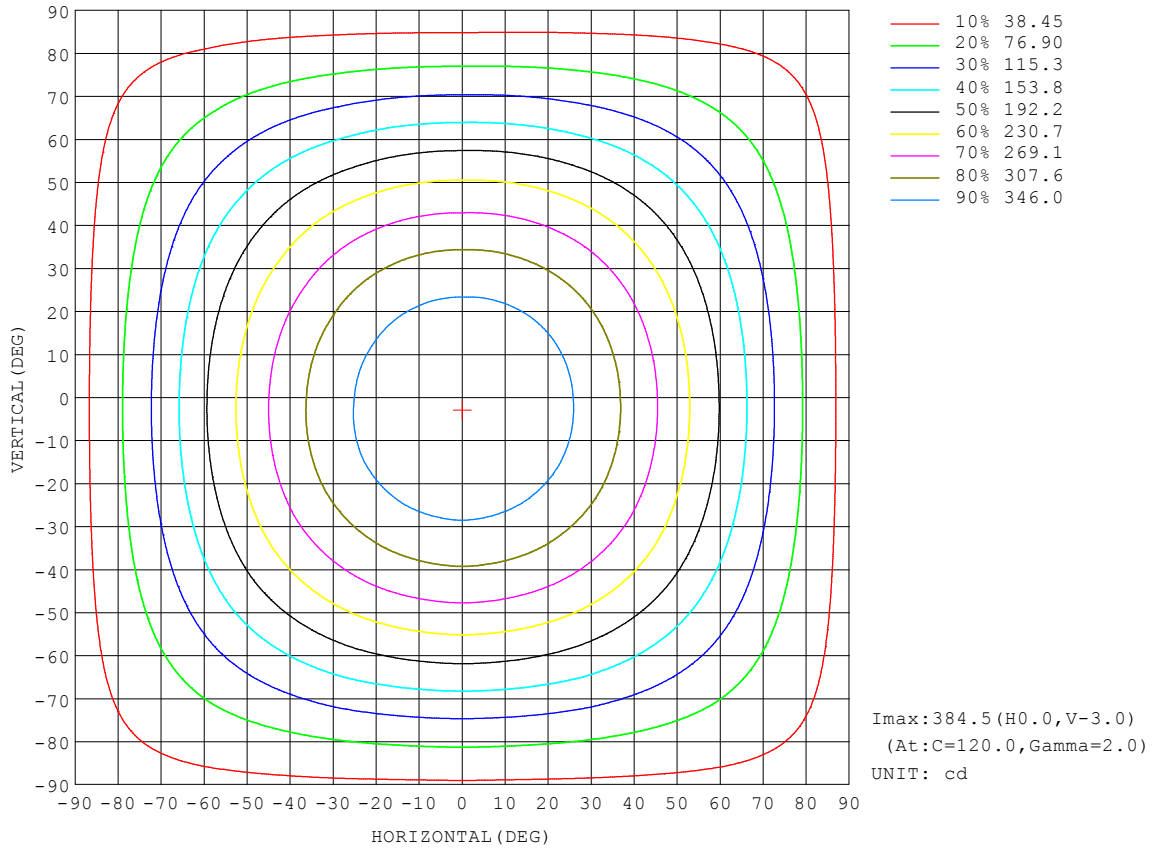
REFLECTANCE										
Ceiling	0.8	0.8	0.8	0.7	0.7	0.7	0.5	0.5	0.5	0
Walls	0.7	0.5	0.3	0.7	0.5	0.3	0.7	0.5	0.3	0
Working plane	0.2	0.2	0.2	0.2	0.2	0.2	0.2	0.2	0.2	0
ROOM INDEX	UTILIZATION FACTORS (PERCENT) $k(RI) \times RCR = 5$									
k = 0.60	54	42	35	53	42	35	52	41	35	28
0.80	64	52	44	63	51	44	61	50	43	36
1.00	72	60	53	71	60	52	68	61	52	44
1.25	79	68	60	78	67	60	74	65	59	51
1.50	84	74	66	82	72	65	79	70	64	56
2.00	91	82	75	89	80	74	85	78	72	63
2.50	95	87	80	93	85	79	89	82	77	67
3.00	99	91	85	96	89	84	92	86	81	71
4.00	103	97	91	101	95	90	96	91	87	76
5.00	106	100	96	103	98	94	98	94	90	79
ROOM INDEX	UF(total)									Direct
According to DIN EN 13032-2 2004			Suspended				SHRNOM = 1.25			

C Range: 0 - 360DEG
 C Interval: 30.0DEG
 Test Speed: HIGH
 Temperature:25.3DEG
 Operators:
 Test Date:2023-05-03

γ Range: 0 - 180DEG
 γ Interval: 1.0DEG
 Test System:EVERFINE GO-2000B_V1 SYSTEM V2.0.362
 Humidity:65.0%
 Test Distance:7.020m [K=1.0000]
 Remarks:

ISOCANDELA DIAGRAM

Test:U:120.5V I:0.2520A P:25.20W PF:0.8280 Freq:60.00Hz Lamp Flux:1276.6x1 lm		
NAME: AFX-DCF14-26DOB-95C-120D-BL1 整灯 (5000K)	TYPE:	WEIGHT:
SPEC.:	DIM.:	SERIAL No.:
MFR.: 革星	SUR.:14寸	Shielding Angle:

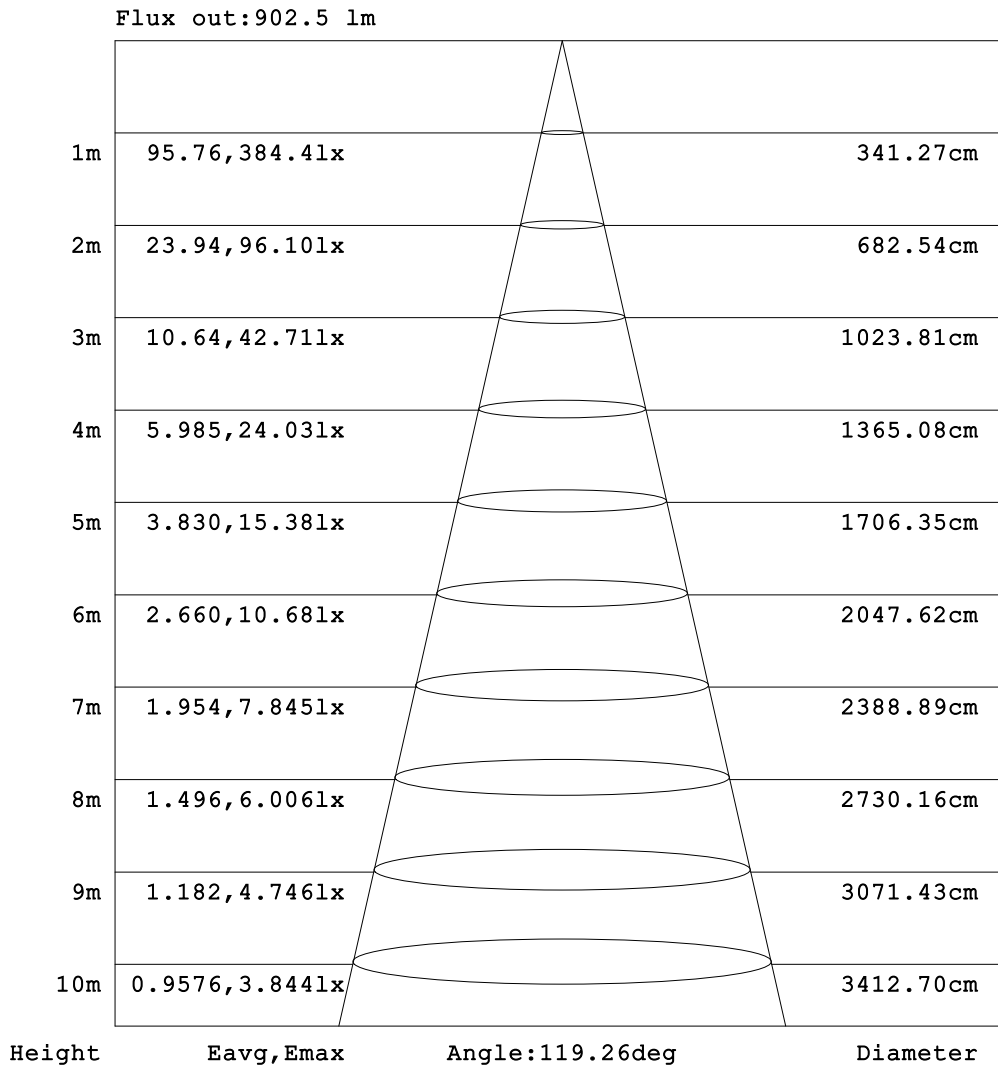


C Range: 0 - 360DEG
 C Interval: 30.0DEG
 Test Speed: HIGH
 Temperature:25.3DEG
 Operators:
 Test Date:2023-05-03

γ Range: 0 - 180DEG
 γ Interval: 1.0DEG
 Test System:EVERFINE GO-2000B_V1 SYSTEM V2.0.362
 Humidity:65.0%
 Test Distance:7.020m [K=1.0000]
 Remarks:

AAI Figure

Test:U:120.5V I:0.2520A P:25.20W PF:0.8280 Freq:60.00Hz Lamp Flux:1276.6x1 lm		
NAME: AFX-DCF14-26DOB-95C-120D-BL1 整灯 (5000K)	TYPE:	WEIGHT:
SPEC.:	DIM.:	SERIAL No.:
MFR.: 草星	SUR.:14寸	Shielding Angle:

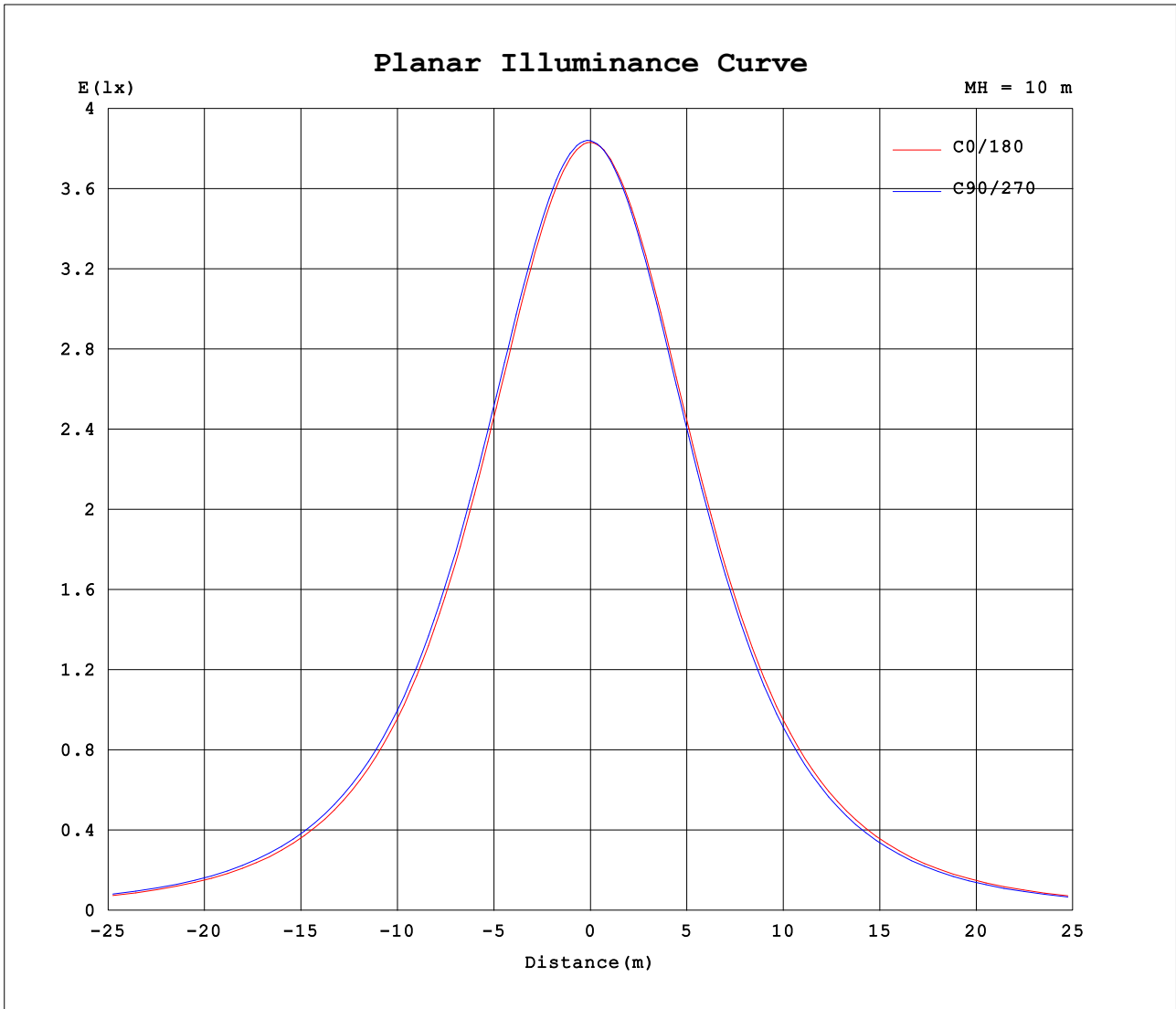


Note:The Curves indicate the illuminated area and the average illumination when the luminaire is at different distance.

C Range: 0 - 360DEG
 C Interval: 30.0DEG
 Test Speed: HIGH
 Temperature:25.3DEG
 Operators:
 Test Date:2023-05-03

γ Range: 0 - 180DEG
 γ Interval: 1.0DEG
 Test System:EVERFINE GO-2000B_V1 SYSTEM V2.0.362
 Humidity:65.0%
 Test Distance:7.020m [K=1.0000]
 Remarks:

Planar Illuminance Curve



C Range: 0 - 360DEG
 C Interval: 30.0DEG
 Test Speed: HIGH
 Temperature: 25.3DEG
 Operators:
 Test Date: 2023-05-03

γ Range: 0 - 180DEG
 γ Interval: 1.0DEG
 Test System: EVERFINE GO-2000B_V1 SYSTEM V2.0.362
 Humidity: 65.0%
 Test Distance: 7.020m [K=1.0000]
 Remarks:

LUMINOUS DISTRIBUTION INTENSITY DATA

Test:U:120.5V I:0.2520A P:25.20W PF:0.8280 Freq:60.00Hz Lamp Flux:1276.6x1 lm		
NAME: AFX-DCF14-26DOB-95C-120D-BL1 整灯 (5000K)	TYPE:	WEIGHT:
SPEC.:	DIM.:	SERIAL No.:
MFR.: 革星	SUR.:14寸	Shielding Angle:

Table--1

UNIT: cd

C (DEG) \ γ (DEG)	0	30	60	90	120	150	180	210	240	270	300	330							
0	383	383	383	384	384	384	383	383	383	384	384	384							
5	382	383	384	384	384	384	381	381	381	381	382	382							
10	378	379	380	382	381	380	377	376	375	375	376	377							
15	371	373	375	376	375	373	370	368	367	367	368	370							
20	361	364	366	367	367	364	360	357	356	355	357	359							
25	349	352	355	356	355	351	346	343	342	341	343	346							
30	333	337	340	342	340	337	331	327	325	324	326	330							
35	315	320	323	324	323	319	312	308	306	305	307	311							
40	294	300	303	305	303	298	292	286	284	283	286	290							
45	271	277	281	282	280	276	269	263	260	259	262	267							
50	246	253	256	258	256	251	244	237	234	233	237	241							
55	219	226	230	232	229	225	217	210	207	206	210	214							
60	191	198	202	204	201	197	188	181	177	177	180	185							
65	161	167	173	173	172	166	158	152	147	147	150	156							
70	131	137	142	144	142	136	129	122	118	117	120	126							
75	101	107	112	114	112	107	99.3	91.9	88.9	87.5	91.2	95.5							
80	72.4	78.6	82.5	84.5	82.3	78.0	71.1	64.3	61.6	60.6	63.7	67.6							
85	46.9	52.3	55.7	57.5	55.5	51.6	45.7	40.3	38.3	37.3	39.8	43.0							
90	27.4	30.9	33.3	34.9	33.5	31.0	27.8	24.7	23.5	23.0	24.2	25.6							
95	18.9	20.3	21.5	22.4	22.0	21.0	20.1	18.5	17.5	17.1	17.7	18.5							
100	15.1	15.8	16.4	17.1	17.0	16.5	16.1	14.8	14.0	13.6	14.1	14.9							
105	11.5	12.2	13.1	13.3	13.1	13.2	12.4	11.3	10.7	9.58	11.0	11.6							
110	8.02	9.42	10.2	9.51	9.76	10.2	8.82	8.29	7.84	7.25	8.37	8.60							
115	5.81	6.94	7.53	6.97	7.08	7.40	6.64	6.00	5.70	5.54	6.20	6.30							
120	4.44	4.92	5.30	5.03	5.07	5.25	5.21	4.61	4.64	4.92	4.95	5.01							
125	4.28	3.85	3.94	4.08	4.15	4.17	4.82	4.51	4.66	4.94	4.78	4.92							
130	4.39	3.93	3.77	4.05	4.20	4.23	4.86	4.53	4.77	5.03	4.78	5.01							
135	4.53	4.12	3.84	4.16	4.30	4.34	4.91	4.67	4.93	5.15	5.11	5.13							
140	4.69	4.35	4.00	4.28	4.45	4.46	5.00	4.86	5.11	5.29	5.29	5.14							
145	4.88	4.59	4.23	4.42	4.58	4.60	5.08	5.06	5.29	5.44	5.43	4.95							
150	5.08	4.83	4.57	4.58	4.72	4.73	5.15	5.10	5.46	5.59	5.59	4.81							
155	5.27	5.08	4.81	4.75	4.87	4.88	5.24	4.92	5.60	5.72	5.68	5.11							
160	5.46	5.32	4.54	4.85	5.01	5.02	5.30	5.03	5.40	5.82	5.80	5.39							
165	5.61	5.24	4.61	4.80	5.04	5.07	5.28	5.06	4.97	5.89	5.88	5.42							
170	5.52	4.81	4.77	4.78	4.93	4.98	5.16	5.02	5.01	5.06	5.72	5.29							
175	5.03	4.92	4.90	4.90	4.89	4.87	5.08	5.04	5.02	4.99	5.09	5.08							
180	5.06	5.01	5.00	5.00	4.97	4.97	5.06	5.02	5.00	4.99	4.96	4.97							

C Range: 0 - 360DEG
 C Interval: 30.0DEG
 Test Speed: HIGH
 Temperature:25.3DEG
 Operators:
 Test Date:2023-05-03

γ Range: 0 - 180DEG
 γ Interval: 1.0DEG
 Test System:EVERFINE GO-2000B_V1 SYSTEM V2.0.362
 Humidity:65.0%
 Test Distance:7.020m [K=1.0000]
 Remarks: