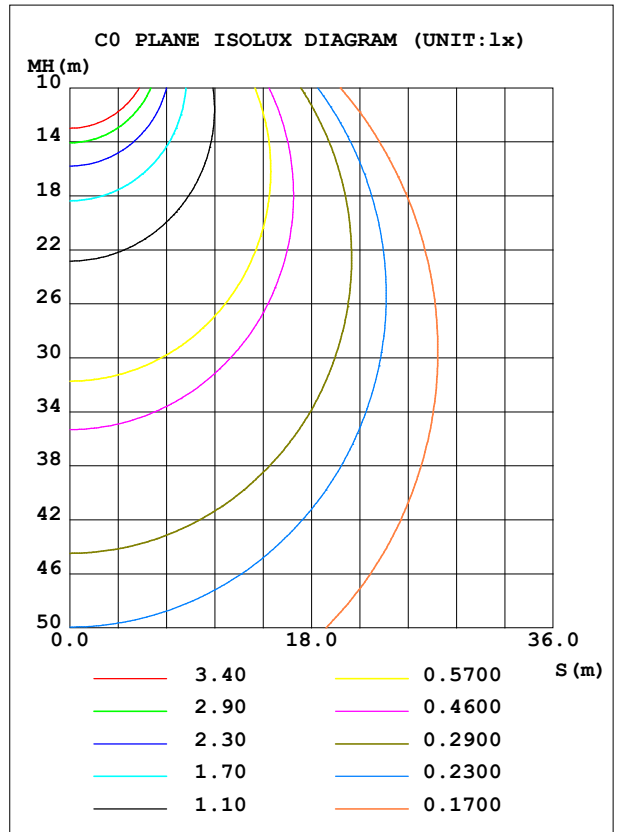
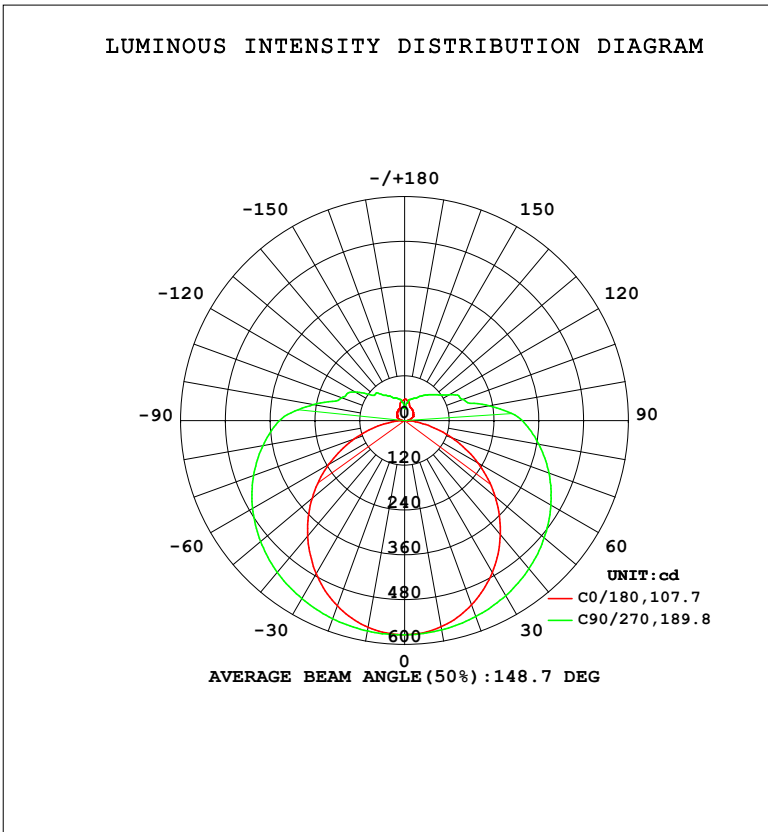


LUMINAIRE PHOTOMETRIC TEST REPORT

Test:U:119.89V I:0.2748A P:29.944W PF:0.9089 Freq:59.98Hz Lamp Flux:2779.48x1 lm		
NAME: WS36-085-BK 30W 50K	TYPE:	WEIGHT:
SPEC.:	DIM.:	SERIAL No.: 1
MFR.: EVERFINE	SUR.:	Shielding Angle:

DATA OF LAMP		PHOTOMETRIC DATA				Eff: 92.82 lm/W
MODEL	5000K	I _{max} (cd)	574.2	S/MH (C0/180)	1.23	
NOMINAL POWER (W)	30	LOR (%)	100.0	S/MH (C90/270)	1.45	
RATED VOLTAGE (V)	120	TOTAL FLUX (lm)	2779.5	η UP, DN (C0-180)	10.0, 39.2	
NOMINAL FLUX (lm)	2779.48	CIE CLASS	SEMI-D.	η UP, DN (C180-360)	10.4, 40.4	
LAMPS INSIDE	1	η up (%)	20.4	CIBSE SHR NOM	1.50	
TEST VOLTAGE (V)	120	η down (%)	79.6	CIBSE SHR MAX	1.55	



C Range: 0 - 360DEG
 C Interval: 90.0DEG
 Test Speed: HIGH
 Temperature: 25.3 °C
 Operators: DAMIN
 Test Date: 07 May 2026

γ Range: 0 - 180DEG
 γ Interval: 1.0DEG
 Test System: EVERFINE GO-2000B_V1 SYSTEM V2.00.459
 Humidity: 65.0%
 Test Distance: 7.380m [K=1.0000]
 Remarks:

ZONAL FLUX DIAGRAM

ZONAL FLUX DIAGRAM:

γ	C0	C90	C180	C270				γ	Φ zone	Φ total	%lum, lamp
10	561.0	569.8	562.6	572.3				0- 10	54.42	54.42	1.96,1.96
20	525.1	558.7	528.0	564.9				10- 20	157.4	211.8	7.62,7.62
30	470.3	541.7	473.9	551.1				20- 30	243.8	455.6	16.4,16.4
40	399.5	518.4	404.5	530.9				30- 40	305.4	761.0	27.4,27.4
50	316.9	488.5	323.3	503.9				40- 50	337.4	1098	39.5,39.5
60	227.3	452.6	234.7	470.8				50- 60	338.3	1437	51.7,51.7
70	134.9	411.4	142.7	431.0				60- 70	310.5	1747	62.9,62.9
80	50.41	364.9	58.09	385.3				70- 80	260.9	2008	72.2,72.2
90	8.467	315.8	8.210	335.6				80- 90	205.0	2213	79.6,79.6
100	12.38	231.3	11.31	248.2				90-100	161.0	2374	85.4,85.4
110	20.76	167.1	19.08	180.3				100-110	113.2	2487	89.5,89.5
120	26.54	139.2	23.99	153.0				110-120	92.41	2580	92.8,92.8
130	30.84	108.7	27.08	106.3				120-130	67.92	2648	95.3,95.3
140	35.24	89.93	30.76	88.57				130-140	51.00	2699	97.1,97.1
150	37.80	72.70	34.03	76.07				140-150	36.59	2735	98.4,98.4
160	41.06	62.65	38.38	64.66				150-160	24.31	2760	99.3,99.3
170	53.30	48.25	51.21	57.44				160-170	15.11	2775	99.8,99.8
180	56.97	33.00	56.98	32.99				170-180	4.777	2779	100,100
DEG	LUMINOUS INTENSITY:cd								UNIT:lm		

Conical surface Flux(90deg): 927.64 lm

%lum = 33.4%

%lamp = 33.4%

Conical surface Flux(120deg): 1436.7 lm

%lum = 51.7%

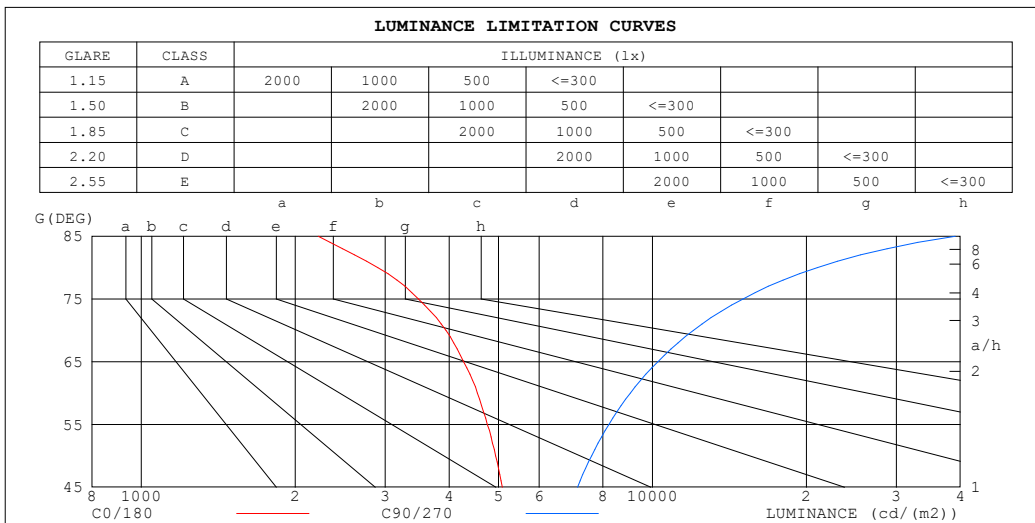
%lamp = 51.7%

C Range: 0 - 360DEG
 C Interval: 90.0DEG
 Test Speed: HIGH
 Temperature:25.3°C
 Operators:DAMIN
 Test Date:07 May 2026

γ Range: 0 - 180DEG
 γ Interval: 1.0DEG
 Test System:EVERFINE GO-2000B_V1 SYSTEM V2.00.459
 Humidity:65.0%
 Test Distance:7.380m [K=1.0000]
 Remarks:

LUMINANCE LIMITATION CURVES

Test:U:119.89V I:0.2748A P:29.944W PF:0.9089 Freq:59.98Hz Lamp Flux:2779.48x1 lm		
NAME: WS36-085-BK 30W 50K	TYPE:	WEIGHT:
SPEC.:	DIM.:	SERIAL No.: 1
MFR.: EVERFINE	SUR.:	Shielding Angle:



LUMINANCE cd/(m2)		
G (DEG)	C0/180	C90/270
85	2218	39103
80	2903	21014
75	3482	15027
70	3944	12029
65	4273	10239
60	4546	9052
55	4753	8219
50	4930	7600
45	5081	7135

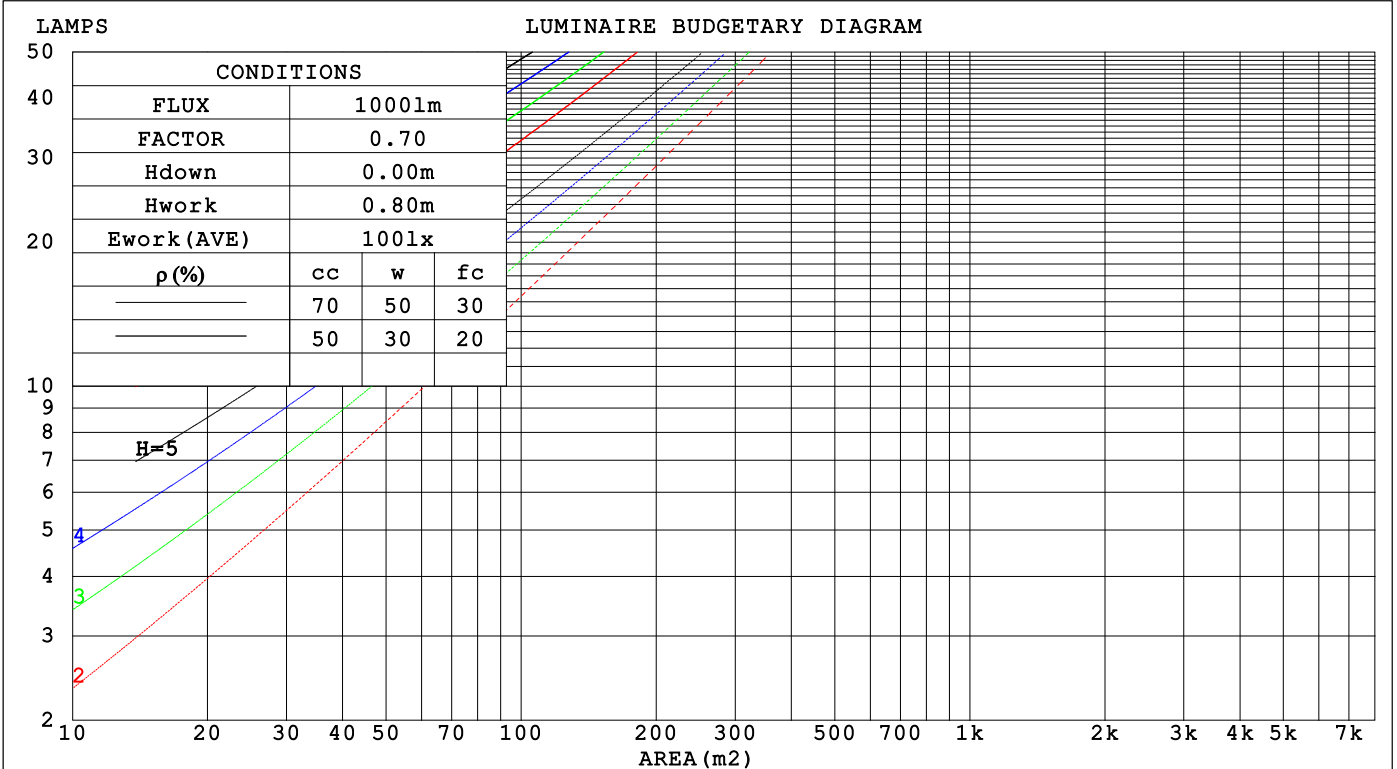
C Range: 0 - 360DEG
 C Interval: 90.0DEG
 Test Speed: HIGH
 Temperature: 25.3 °C
 Operators: DAMIN
 Test Date: 07 May 2026

γ Range: 0 - 180DEG
 γ Interval: 1.0DEG
 Test System: EVERFINE GO-2000B_V1 SYSTEM V2.00.459
 Humidity: 65.0%
 Test Distance: 7.380m [K=1.0000]
 Remarks:

CU AND LUMINAIRE BUDGETARY ESTIMATE DIAGRAM

Test:U:119.89V I:0.2748A P:29.944W PF:0.9089 Freq:59.98Hz Lamp Flux:2779.48x1 lm		
NAME: WS36-085-BK 30W 50K	TYPE:	WEIGHT:
SPEC.:	DIM.:	SERIAL No.: 1
MFR.: EVERFINE	SUR.:	Shielding Angle:

pcc	80%			70%			50%			30%			10%			0
pw	50%	30%	10%	50%	30%	10%	50%	30%	10%	50%	30%	10%	50%	30%	10%	0
pfc	20%			20%			20%			20%			20%			0
RCR	RCR:Room Cavity Ratio						Coefficients of Utilization(CU)									
0.0	1.14	1.14	1.14	1.09	1.09	1.09	.00	.00	.00	.91	.91	.91	.83	.83	.83	.80
1.0	.95	.90	.85	.91	.86	.82	.83	.79	.75	.75	.72	.69	.68	.66	.64	.60
2.0	.81	.73	.67	.78	.70	.64	.71	.65	.60	.64	.60	.55	.58	.55	.51	.48
3.0	.70	.61	.54	.67	.59	.52	.61	.55	.49	.56	.50	.46	.51	.46	.42	.39
4.0	.62	.52	.45	.59	.50	.44	.54	.47	.41	.49	.43	.38	.45	.40	.36	.33
5.0	.55	.45	.38	.52	.44	.37	.48	.41	.35	.44	.38	.33	.40	.35	.30	.28
6.0	.49	.40	.33	.47	.38	.32	.43	.36	.30	.39	.33	.28	.36	.31	.26	.24
7.0	.44	.35	.29	.42	.34	.28	.39	.32	.26	.36	.30	.25	.33	.27	.23	.21
8.0	.40	.31	.25	.39	.30	.25	.36	.28	.23	.33	.27	.22	.30	.25	.21	.19
9.0	.37	.28	.23	.35	.27	.22	.33	.26	.21	.30	.24	.20	.28	.22	.19	.17
10.0	.34	.26	.20	.32	.25	.20	.30	.23	.19	.28	.22	.18	.26	.21	.17	.15



C Range: 0 - 360DEG
 C Interval: 90.0DEG
 Test Speed: HIGH
 Temperature:25.3 °C
 Operators:DAMIN
 Test Date:07 May 2026

γ Range: 0 - 180DEG
 γ Interval: 1.0DEG
 Test System:EVERFINE GO-2000B_V1 SYSTEM V2.00.459
 Humidity:65.0%
 Test Distance:7.380m [K=1.0000]
 Remarks:

WEC AND CCEC

Test:U:119.89V I:0.2748A P:29.944W PF:0.9089 Freq:59.98Hz Lamp Flux:2779.48x1 lm		
NAME: WS36-085-BK 30W 50K	TYPE:	WEIGHT:
SPEC.:	DIM.:	SERIAL No.: 1
MFR.: EVERFINE	SUR.:	Shielding Angle:

ρ_{CC}	80%			70%			50%			30%			10%			0
ρ_w	50%	30%	10%	50%	30%	10%	50%	30%	10%	50%	30%	10%	50%	30%	10%	0
ρ_{fc}	20%			20%			20%			20%			20%			0
RCR	RCR:Room Cavity Ratio						Wall Exitance Coefficients(WEC)									
0.0																
1.0	.384	.218	.069	.371	.211	.067	.346	.198	.063	.322	.186	.060	.301	.175	.056	
2.0	.333	.182	.056	.320	.176	.054	.298	.165	.051	.277	.155	.049	.257	.145	.046	
3.0	.295	.157	.047	.284	.152	.046	.264	.143	.043	.245	.134	.041	.227	.126	.039	
4.0	.266	.138	.041	.256	.134	.040	.237	.126	.038	.220	.118	.036	.204	.111	.034	
5.0	.242	.123	.036	.233	.119	.035	.216	.112	.033	.200	.105	.031	.185	.099	.030	
6.0	.221	.111	.032	.213	.108	.031	.198	.101	.029	.183	.095	.028	.170	.089	.026	
7.0	.204	.101	.029	.197	.098	.028	.182	.092	.027	.169	.087	.025	.157	.081	.024	
8.0	.189	.093	.026	.182	.090	.025	.169	.085	.024	.157	.080	.023	.145	.075	.022	
9.0	.176	.085	.024	.170	.083	.023	.158	.078	.022	.147	.074	.021	.136	.069	.020	
10.0	.165	.079	.022	.159	.077	.021	.148	.073	.020	.138	.068	.019	.128	.064	.018	

ρ_{CC}	80%			70%			50%			30%			10%			0
ρ_w	50%	30%	10%	50%	30%	10%	50%	30%	10%	50%	30%	10%	50%	30%	10%	0
ρ_{fc}	20%			20%			20%			20%			20%			0
RCR	RCR:Room Cavity Ratio						Ceiling Cavity Exitance Coefficients(CCEC)									
0.0	.346	.346	.346	.295	.295	.295	.202	.202	.202	.116	.116	.116	.037	.037	.037	
1.0	.342	.312	.285	.293	.268	.245	.200	.184	.170	.115	.107	.099	.037	.034	.032	
2.0	.335	.289	.251	.287	.249	.217	.197	.172	.151	.113	.100	.089	.036	.032	.029	
3.0	.328	.273	.229	.281	.235	.199	.193	.164	.139	.111	.096	.082	.036	.031	.027	
4.0	.320	.260	.215	.275	.225	.187	.189	.157	.131	.109	.092	.078	.035	.030	.026	
5.0	.312	.251	.205	.268	.217	.178	.185	.152	.126	.107	.089	.075	.035	.029	.025	
6.0	.305	.243	.198	.262	.210	.173	.181	.147	.122	.105	.087	.073	.034	.028	.024	
7.0	.298	.236	.193	.256	.205	.168	.177	.144	.119	.103	.085	.071	.033	.028	.023	
8.0	.291	.231	.189	.251	.200	.165	.174	.141	.117	.101	.083	.070	.033	.027	.023	
9.0	.285	.226	.186	.246	.196	.162	.170	.138	.115	.099	.081	.069	.032	.027	.023	
10.0	.279	.222	.184	.241	.193	.160	.167	.136	.114	.097	.080	.068	.032	.026	.023	

C Range: 0 - 360DEG γ Range: 0 - 180DEG
 C Interval: 90.0DEG γ Interval: 1.0DEG
 Test Speed: HIGH Test System:EVERFINE GO-2000B_V1 SYSTEM V2.00.459
 Temperature:25.3°C Humidity:65.0%
 Operators:DAMIN Test Distance:7.380m [K=1.0000]
 Test Date:07 May 2026 Remarks:

UGR(Unified Glare Rating) Table

Test:U:119.89V I:0.2748A P:29.944W PF:0.9089 Freq:59.98Hz Lamp Flux:2779.48x1 lm		
NAME: WS36-085-BK 30W 50K	TYPE:	WEIGHT:
SPEC.:	DIM.:	SERIAL No.: 1
MFR.: EVERFINE	SUR.:	Shielding Angle:

ceiling/cavity	0.7	0.7	0.5	0.5	0.3	0.7	0.7	0.5	0.5	0.3
walls	0.5	0.3	0.5	0.3	0.3	0.5	0.3	0.5	0.3	0.3
working plane	0.2	0.2	0.2	0.2	0.2	0.2	0.2	0.2	0.2	0.2
Room dimensions	Viewed crosswise					Viewed endwise				
x = 2H y = 2H	13.3	14.6	13.8	15.1	15.8	15.7	17.0	16.2	17.6	18.2
3H	14.7	16.0	15.3	16.5	17.2	18.5	19.7	19.1	20.3	21.0
4H	15.3	16.4	15.9	17.0	17.7	20.1	21.3	20.7	21.9	22.5
6H	15.6	16.8	16.3	17.4	18.1	21.9	23.0	22.5	23.6	24.3
8H	15.7	16.8	16.4	17.4	18.1	22.9	23.9	23.5	24.6	25.3
12H	15.8	16.8	16.4	17.5	18.2	24.0	25.0	24.6	25.7	26.4
4H 2H	14.4	15.6	15.0	16.2	16.8	16.2	17.3	16.7	17.9	18.6
3H	16.2	17.2	16.8	17.8	18.5	19.2	20.2	19.8	20.8	21.6
4H	16.9	17.9	17.6	18.5	19.3	20.9	21.9	21.6	22.5	23.3
6H	17.5	18.4	18.2	19.0	19.8	22.9	23.8	23.6	24.4	25.2
8H	17.7	18.5	18.4	19.2	20.0	24.0	24.8	24.7	25.5	26.3
12H	17.8	18.6	18.5	19.3	20.1	25.3	26.1	26.1	26.8	27.6
8H 4H	18.0	18.8	18.7	19.5	20.3	21.2	22.0	21.9	22.7	23.5
6H	19.0	19.6	19.7	20.3	21.2	23.4	24.1	24.1	24.8	25.7
8H	19.4	20.0	20.1	20.7	21.6	24.8	25.4	25.5	26.1	27.0
12H	19.7	20.2	20.5	21.0	21.9	26.3	26.8	27.1	27.6	28.5
12H 4H	18.3	19.1	19.0	19.8	20.6	21.2	21.9	21.9	22.6	23.5
6H	19.5	20.1	20.3	20.9	21.7	23.5	24.1	24.2	24.8	25.7
8H	20.1	20.6	20.9	21.4	22.3	24.9	25.4	25.7	26.2	27.1
Variations with the observer position at spacings(CIE Pub.117):										
S = 1.0H	+ 0.1 / - 0.1					+ 0.1 / - 0.1				
1.5H	+ 0.2 / - 0.3					+ 0.2 / - 0.2				
2.0H	+ 0.3 / - 0.5					+ 0.2 / - 0.3				

CIE Pub.117, 2779 lm Total Lamp Luminous Flux Correct (8log(F/F0) = 3.6)
Area: 0.1 m2

C Range: 0 - 360DEG	γ Range: 0 - 180DEG
C Interval: 90.0DEG	γ Interval: 1.0DEG
Test Speed: HIGH	Test System:EVERFINE GO-2000B_V1 SYSTEM V2.00.459
Temperature:25.3℃	Humidity:65.0%
Operators:DAMIN	Test Distance:7.380m [K=1.0000]
Test Date:07 May 2026	Remarks:

UTILIZATION FACTORS TABLE

Test:U:119.89V I:0.2748A P:29.944W PF:0.9089 Freq:59.98Hz Lamp Flux:2779.48x1 lm		
NAME: WS36-085-BK 30W 50K	TYPE:	WEIGHT:
SPEC.:	DIM.:	SERIAL No.: 1
MFR.: EVERFINE	SUR.:	Shielding Angle:

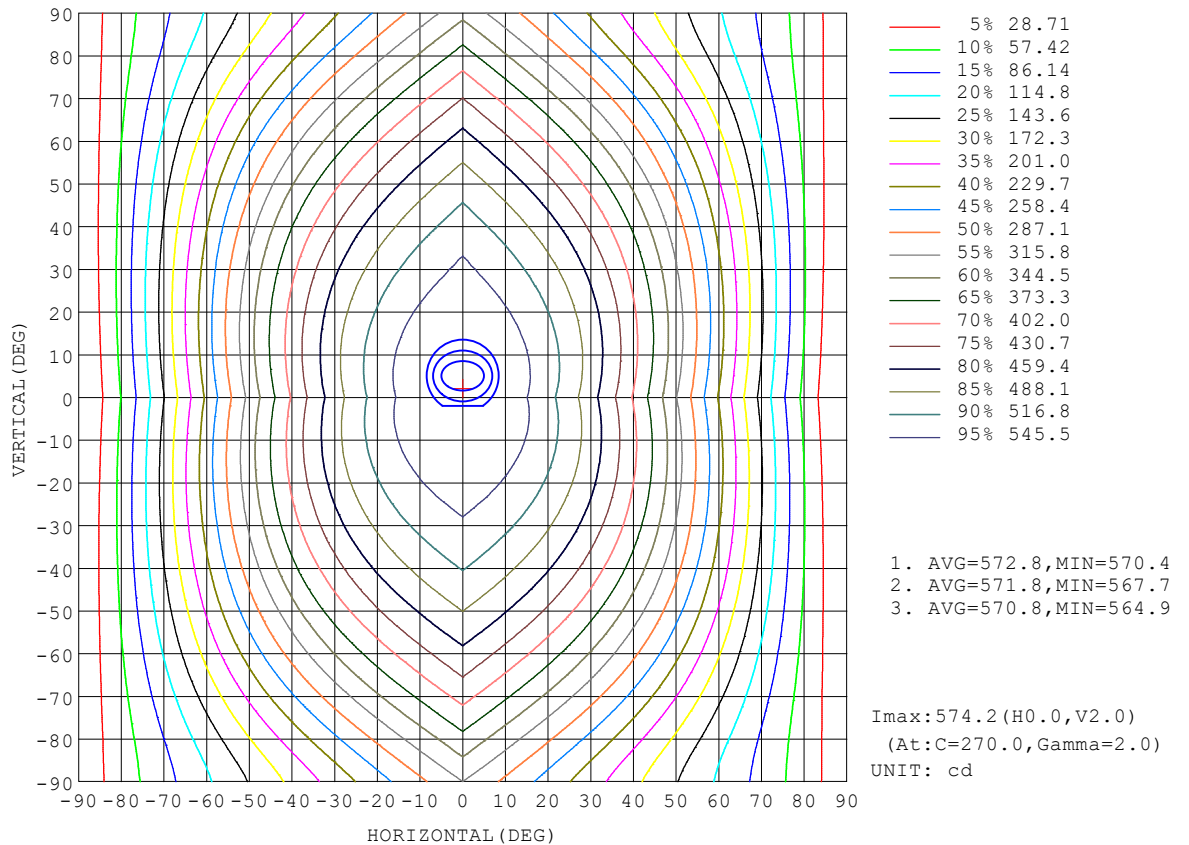
REFLECTANCE										
Ceiling	0.8	0.8	0.8	0.7	0.7	0.7	0.5	0.5	0.5	0
Walls	0.7	0.5	0.3	0.7	0.5	0.3	0.7	0.5	0.3	0
Working plane	0.2	0.2	0.2	0.2	0.2	0.2	0.2	0.2	0.2	0
ROOM INDEX	UTILIZATION FACTORS (PERCENT) $k(RI) \times RCR = 5$									
$k = 0.60$	47	35	27	46	34	27	44	33	27	20
0.80	56	43	35	54	42	35	51	41	34	26
1.00	64	51	42	62	50	42	58	50	40	31
1.25	71	58	50	68	57	49	64	54	47	37
1.50	76	64	55	73	62	54	68	58	52	41
2.00	83	72	64	80	70	62	74	66	59	47
2.50	88	77	69	84	75	68	78	70	64	51
3.00	91	82	75	88	79	72	81	74	68	54
4.00	96	88	82	92	85	79	85	79	74	59
5.00	99	92	86	95	89	83	87	82	78	62
ROOM INDEX	UF(total)									Direct
According to DIN EN 13032-2 2004			Suspended				SHRNOM = 1.25			

C Range: 0 - 360DEG
 C Interval: 90.0DEG
 Test Speed: HIGH
 Temperature:25.3°C
 Operators:DAMIN
 Test Date:07 May 2026

γ Range: 0 - 180DEG
 γ Interval: 1.0DEG
 Test System:EVERFINE GO-2000B_V1 SYSTEM V2.00.459
 Humidity:65.0%
 Test Distance:7.380m [K=1.0000]
 Remarks:

ISOCANDELA DIAGRAM

Test:U:119.89V I:0.2748A P:29.944W PF:0.9089 Freq:59.98Hz Lamp Flux:2779.48x1 lm		
NAME: WS36-085-BK 30W 50K	TYPE:	WEIGHT:
SPEC.:	DIM.:	SERIAL No.: 1
MFR.: EVERFINE	SUR.:	Shielding Angle:

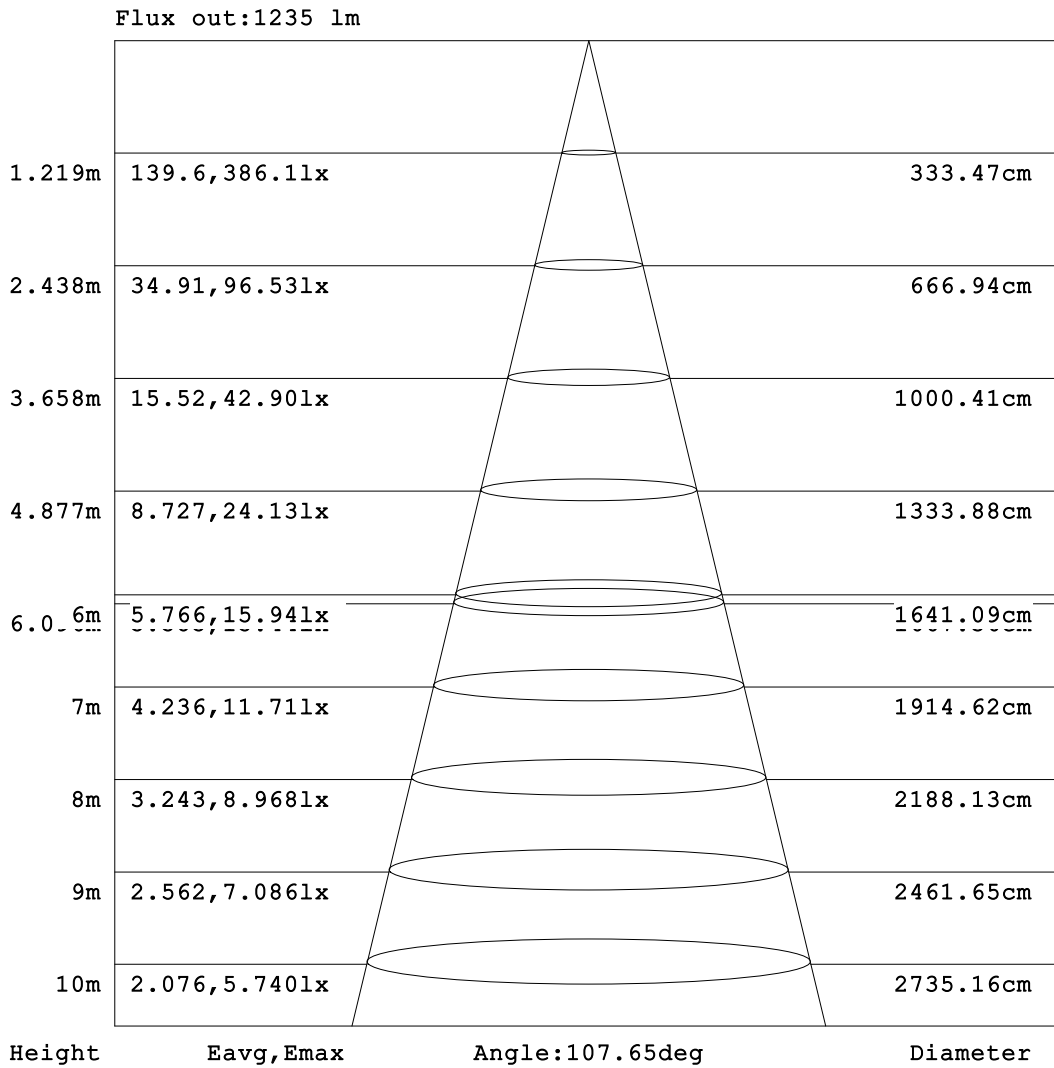


C Range: 0 - 360DEG
C Interval: 90.0DEG
Test Speed: HIGH
Temperature:25.3 °C
Operators:DAMIN
Test Date:07 May 2026

γ Range: 0 - 180DEG
γ Interval: 1.0DEG
Test System:EVERFINE GO-2000B_V1 SYSTEM V2.00.459
Humidity:65.0%
Test Distance:7.380m [K=1.0000]
Remarks:

AAI Figure

Test:U:119.89V I:0.2748A P:29.944W PF:0.9089 Freq:59.98Hz Lamp Flux:2779.48x1 lm		
NAME: WS36-085-BK 30W 50K	TYPE:	WEIGHT:
SPEC.:	DIM.:	SERIAL No.: 1
MFR.: EVERFINE	SUR.:	Shielding Angle:



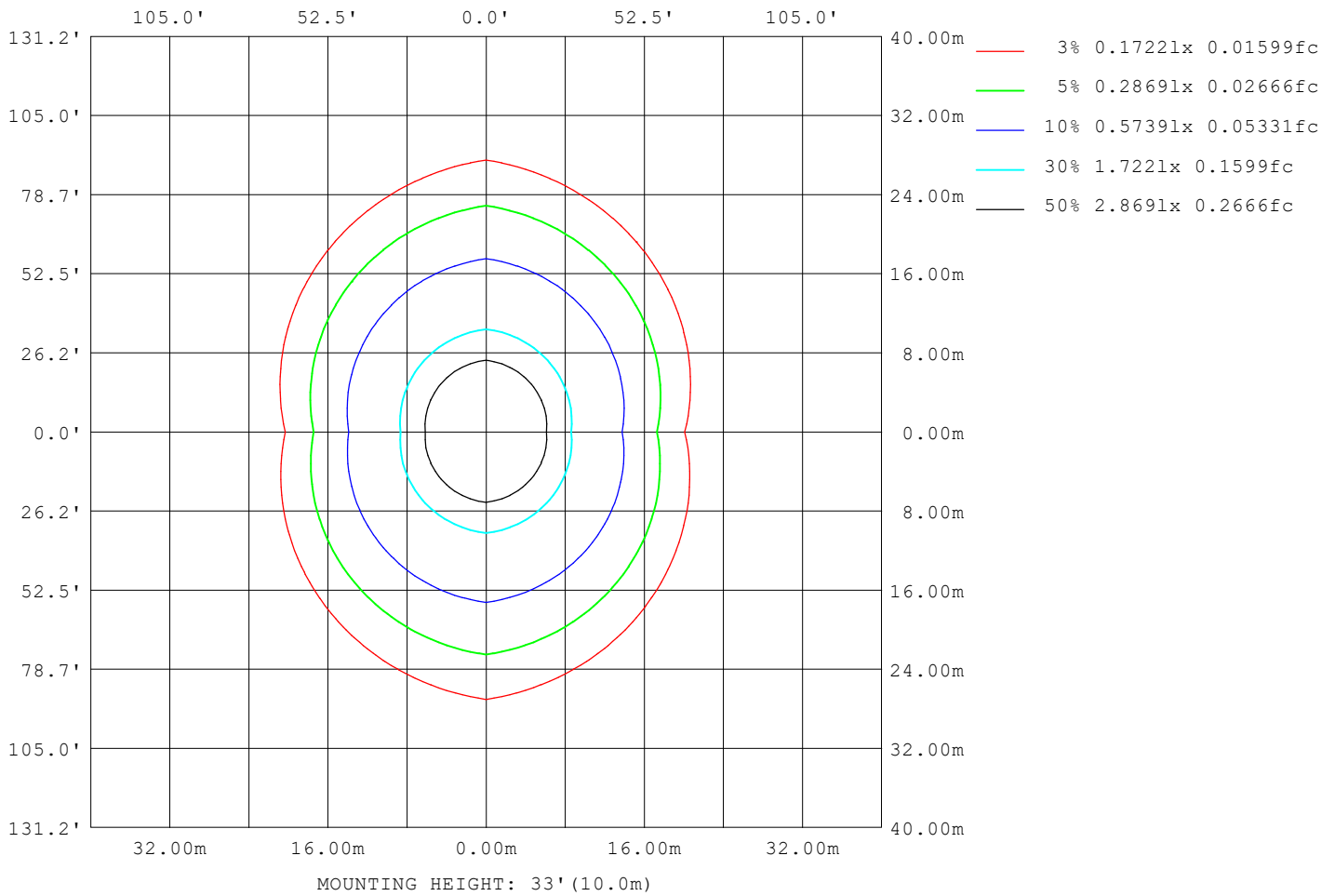
Note:The Curves indicate the illuminated area and the average illumination when the luminaire is at different distance.

C Range: 0 - 360DEG
C Interval: 90.0DEG
Test Speed: HIGH
Temperature:25.3°C
Operators:DAMIN
Test Date:07 May 2026

γ Range: 0 - 180DEG
γ Interval: 1.0DEG
Test System:EVERFINE GO-2000B_V1 SYSTEM V2.00.459
Humidity:65.0%
Test Distance:7.380m [K=1.0000]
Remarks:

ISOLUX DIAGRAM

Test:U:119.89V I:0.2748A P:29.944W PF:0.9089 Freq:59.98Hz Lamp Flux:2779.48x1 lm		
NAME: WS36-085-BK 30W 50K	TYPE:	WEIGHT:
SPEC.:	DIM.:	SERIAL No.: 1
MFR.: EVERFINE	SUR.:	Shielding Angle:



C Range: 0 - 360DEG
 C Interval: 90.0DEG
 Test Speed: HIGH
 Temperature:25.3 °C
 Operators:DAMIN
 Test Date:07 May 2026

γ Range: 0 - 180DEG
 γ Interval: 1.0DEG
 Test System:EVERFINE GO-2000B_V1 SYSTEM V2.00.459
 Humidity:65.0%
 Test Distance:7.380m [K=1.0000]
 Remarks:

LED Avg.L Report

Test:U:119.89V I:0.2748A P:29.944W PF:0.9089 Freq:59.98Hz Lamp Flux:2779.48x1 lm		
NAME: WS36-085-BK 30W 50K	TYPE:	WEIGHT:
SPEC.:	DIM.:	SERIAL No.: 1
MFR.: EVERFINE	SUR.:	Shielding Angle:

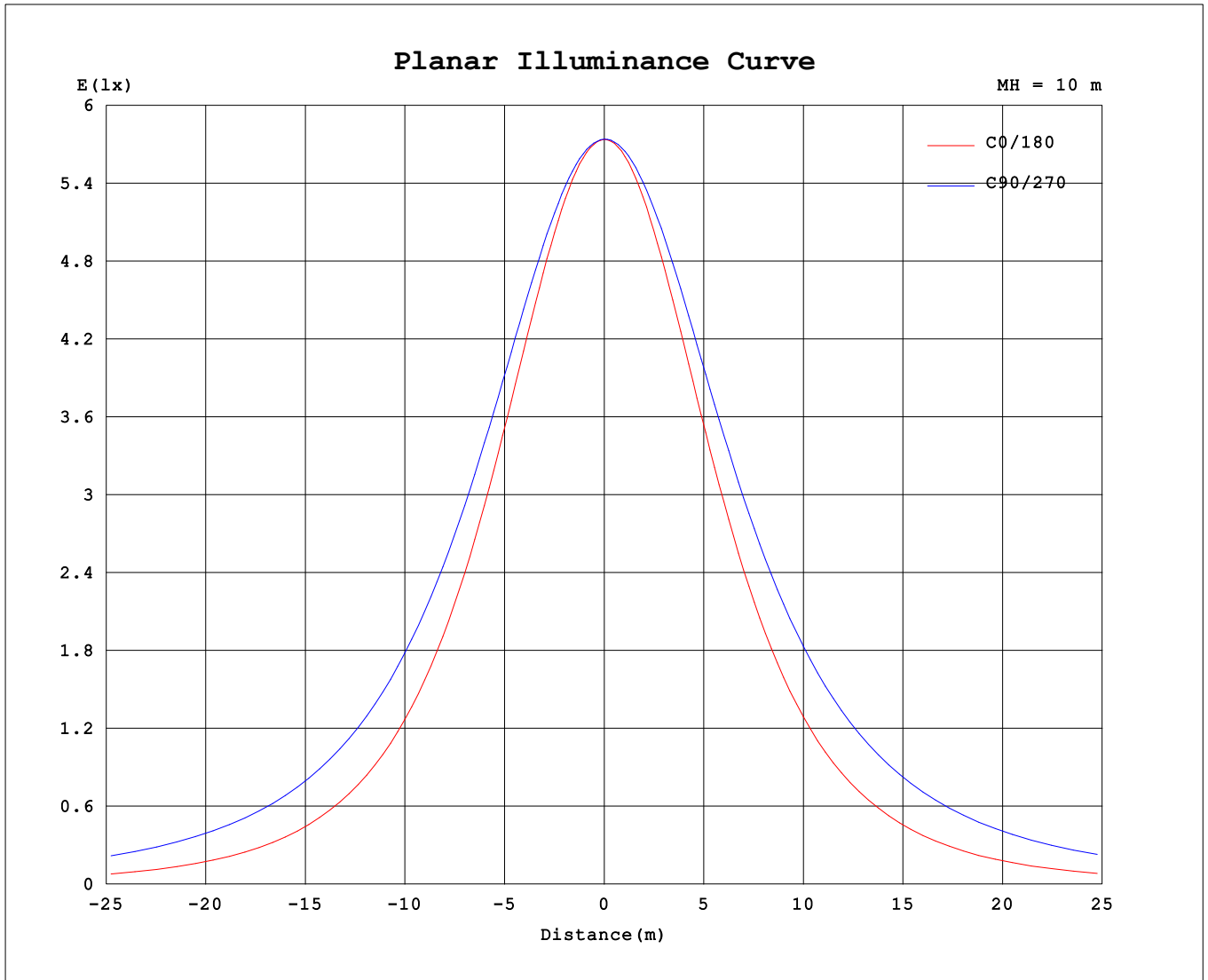
AvgL	cd/m2
L_0~180 (65) av	4363
L_0~180 (75) av	3649
L_0~180 (85) av	2523
L_90~270 (65) av	10463
L_90~270 (75) av	15412
L_90~270 (85) av	40274
L_45 (65) av	8181
L_45 (75) av	11011
L_45 (85) av	26136

Standard: GB/T 29293-2012

C Range: 0 - 360DEG
 C Interval: 90.0DEG
 Test Speed: HIGH
 Temperature:25.3℃
 Operators:DAMIN
 Test Date:07 May 2026

γ Range: 0 - 180DEG
 γ Interval: 1.0DEG
 Test System:EVERFINE GO-2000B_V1 SYSTEM V2.00.459
 Humidity:65.0%
 Test Distance:7.380m [K=1.0000]
 Remarks:

Planar Illuminance Curve



C Range: 0 - 360DEG
 C Interval: 90.0DEG
 Test Speed: HIGH
 Temperature: 25.3 °C
 Operators: DAMIN
 Test Date: 07 May 2026

γ Range: 0 - 180DEG
 γ Interval: 1.0DEG
 Test System: EVERFINE GO-2000B_V1 SYSTEM V2.00.459
 Humidity: 65.0%
 Test Distance: 7.380m [K=1.0000]
 Remarks:

LUMINOUS DISTRIBUTION INTENSITY DATA

Test:U:119.89V I:0.2748A P:29.944W PF:0.9089 Freq:59.98Hz Lamp Flux:2779.48x1 lm		
NAME: WS36-085-BK 30W 50K	TYPE:	WEIGHT:
SPEC.:	DIM.:	SERIAL No.: 1
MFR.: EVERFINE	SUR.:	Shielding Angle:

Table--1

UNIT: cd

C (DEG) \ γ (DEG)	0	90	180	270															
0	574	574	574	574															
5	571	573	571	574															
10	561	570	563	572															
15	546	565	548	569															
20	525	559	528	565															
25	500	551	503	559															
30	470	542	474	551															
35	436	531	441	542															
40	399	518	404	531															
45	359	505	365	518															
50	317	489	323	504															
55	273	471	280	488															
60	227	453	235	471															
65	181	433	188	452															
70	135	411	143	431															
75	90.1	389	98.8	409															
80	50.4	365	58.1	385															
85	19.3	341	24.6	361															
90	8.47	316	8.21	336															
95	9.69	277	9.03	296															
100	12.4	231	11.3	248															
105	16.3	182	14.8	201															
110	20.8	167	19.1	180															
115	25.4	160	23.5	171															
120	26.5	139	24.0	153															
125	28.4	120	24.3	126															
130	30.8	109	27.1	106															
135	33.4	98.6	29.4	106															
140	35.2	89.9	30.8	88.6															
145	36.2	81.6	32.4	82.4															
150	37.8	72.7	34.0	76.1															
155	39.2	66.3	35.4	66.9															
160	41.1	62.7	38.4	64.7															
165	49.1	59.1	47.1	60.2															
170	53.3	48.3	51.2	57.4															
175	56.8	35.3	54.8	48.4															
180	57.0	33.0	57.0	33.0															

C Range: 0 - 360DEG
 C Interval: 90.0DEG
 Test Speed: HIGH
 Temperature:25.3℃
 Operators:DAMIN
 Test Date:07 May 2026

γ Range: 0 - 180DEG
 γ Interval: 1.0DEG
 Test System:EVERFINE GO-2000B_V1 SYSTEM V2.00.459
 Humidity:65.0%
 Test Distance:7.380m [K=1.0000]
 Remarks: