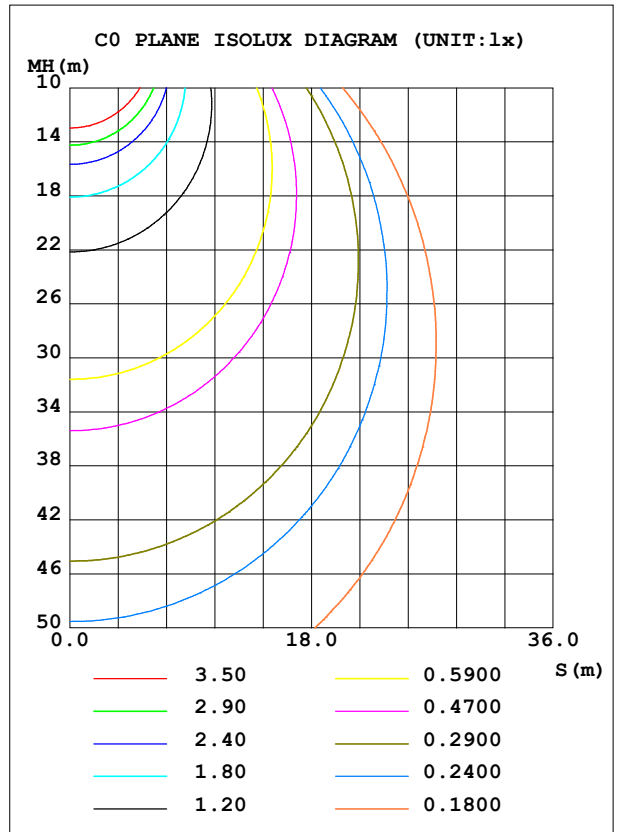
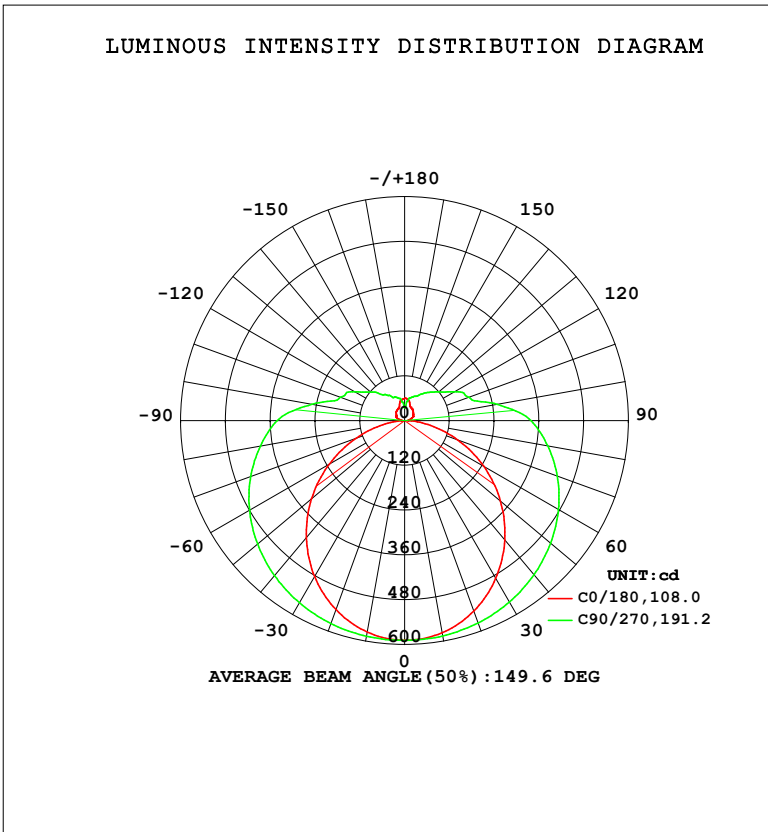


LUMINAIRE PHOTOMETRIC TEST REPORT

Test:U:119.94V I:0.2700A P:29.545W PF:0.9123 Freq:59.98Hz Lamp Flux:2889.08x1 lm		
NAME: WS36-085-BN 30W 35K	TYPE:	WEIGHT:
SPEC.:	DIM.:	SERIAL No.: 1
MFR.: EVERFINE	SUR.:	Shielding Angle:

DATA OF LAMP		PHOTOMETRIC DATA				Eff: 97.78 lm/W
MODEL	3500K	I _{max} (cd)	589.1	S/MH (C0/180)	1.22	
NOMINAL POWER (W)	30	LOR (%)	100.0	S/MH (C90/270)	1.44	
RATED VOLTAGE (V)	120	TOTAL FLUX (lm)	2889.1	η UP, DN (C0-180)	10.4, 39.8	
NOMINAL FLUX (lm)	2889.08	CIE CLASS	SEMI-D.	η UP, DN (C180-360)	10.3, 39.5	
LAMPS INSIDE	1	η up (%)	20.8	CIBSE SHR NOM	1.50	
TEST VOLTAGE (V)	120	η down (%)	79.2	CIBSE SHR MAX	1.55	



C Range: 0 - 360DEG
 C Interval: 90.0DEG
 Test Speed: HIGH
 Temperature: 25.3 °C
 Operators: DAMIN
 Test Date: 20 April 2026

γ Range: 0 - 180DEG
 γ Interval: 1.0DEG
 Test System: EVERFINE GO-2000B_V1 SYSTEM V2.00.459
 Humidity: 65.0%
 Test Distance: 7.380m [K=1.0000]
 Remarks:

ZONAL FLUX DIAGRAM

ZONAL FLUX DIAGRAM:

γ	C0	C90	C180	C270				γ	Φ zone	Φ total	%lum,lamp
10	577.4	586.0	575.6	586.8				0- 10	55.86	55.86	1.93,1.93
20	543.0	576.5	538.8	578.3				10- 20	161.7	217.5	7.53,7.53
30	488.5	561.5	482.4	563.9				20- 30	250.7	468.2	16.2,16.2
40	418.0	539.5	410.1	542.7				30- 40	314.5	782.7	27.1,27.1
50	335.2	510.8	325.7	514.6				40- 50	348.0	1131	39.1,39.1
60	244.7	476.0	233.2	479.9				50- 60	349.8	1480	51.2,51.2
70	151.1	435.5	138.2	439.1				60- 70	322.0	1803	62.4,62.4
80	63.62	389.5	52.49	392.2				70- 80	271.8	2074	71.8,71.8
90	10.03	339.0	8.786	341.9				80- 90	214.8	2289	79.2,79.2
100	12.64	252.3	13.23	252.6				90-100	169.0	2458	85.1,85.1
110	20.63	183.7	22.24	183.4				100-110	119.9	2578	89.2,89.2
120	26.43	155.1	26.52	155.3				110-120	97.78	2676	92.6,92.6
130	31.24	120.2	29.80	119.4				120-130	73.35	2749	95.2,95.2
140	35.62	98.94	33.64	90.29				130-140	54.42	2804	97,97
150	38.49	79.77	36.88	77.39				140-150	38.71	2842	98.4,98.4
160	43.05	68.29	41.41	66.63				150-160	25.69	2868	99.3,99.3
170	56.02	54.05	54.81	58.27				160-170	16.05	2884	99.8,99.8
180	59.86	35.42	59.84	35.44				170-180	5.060	2889	100,100
DEG	LUMINOUS INTENSITY:cd								UNIT:lm		

Conical surface Flux(90deg): 954.49 lm

%lum = 33.0%

%lamp = 33.0%

Conical surface Flux(120deg): 1480.5 lm

%lum = 51.2%

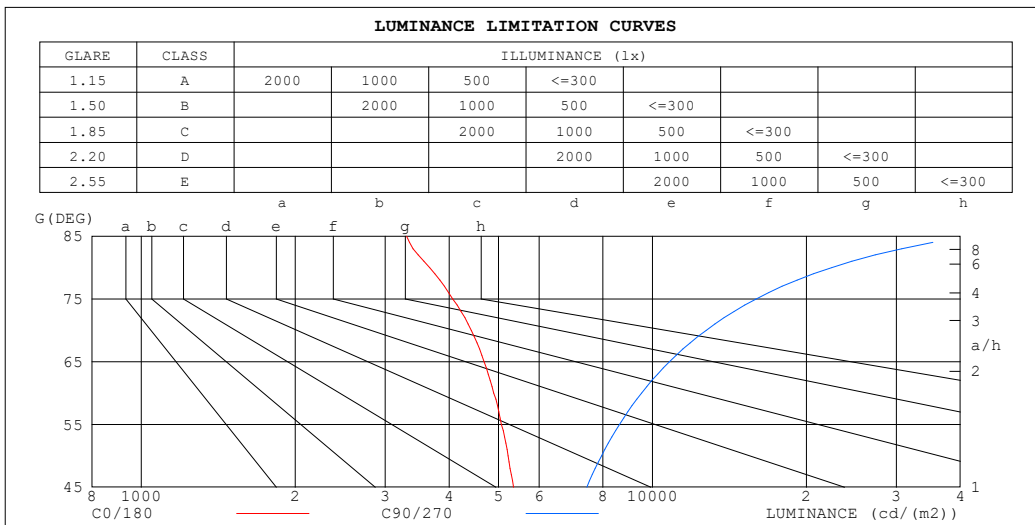
%lamp = 51.2%

C Range: 0 - 360DEG
 C Interval: 90.0DEG
 Test Speed: HIGH
 Temperature:25.3℃
 Operators:DAMIN
 Test Date:20 April 2026

γ Range: 0 - 180DEG
 γ Interval: 1.0DEG
 Test System:EVERFINE GO-2000B_V1 SYSTEM V2.00.459
 Humidity:65.0%
 Test Distance:7.380m [K=1.0000]
 Remarks:

LUMINANCE LIMITATION CURVES

Test:U:119.94V I:0.2700A P:29.545W PF:0.9123 Freq:59.98Hz Lamp Flux:2889.08x1 lm		
NAME: WS36-085-BN 30W 35K	TYPE:	WEIGHT:
SPEC.:	DIM.:	SERIAL No.: 1
MFR.: EVERFINE	SUR.:	Shielding Angle:



LUMINANCE cd/(m2)		
G (DEG)	C0/180	C90/270
85	3302	41863
80	3663	22431
75	4067	15962
70	4418	12734
65	4682	10799
60	4893	9519
55	5063	8613
50	5215	7946
45	5345	7437

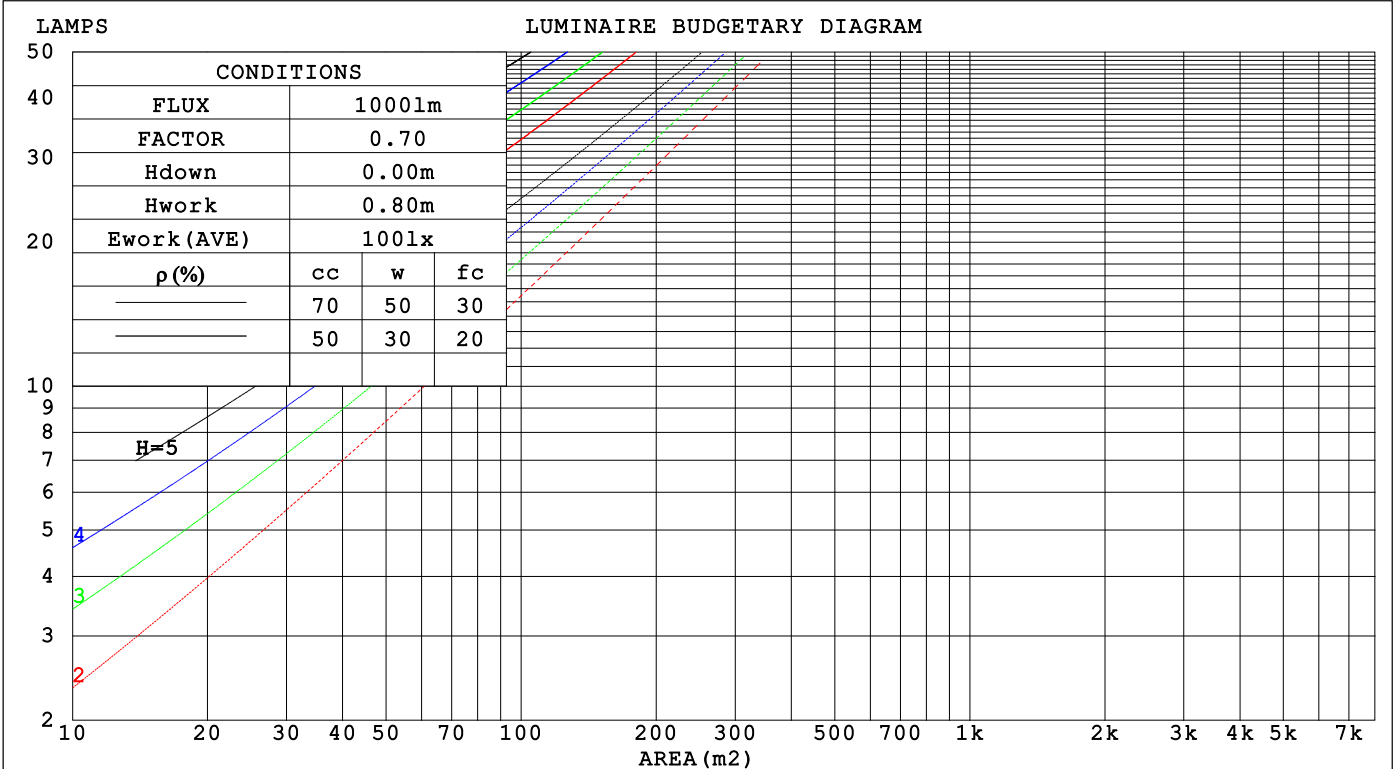
C Range: 0 - 360DEG
 C Interval: 90.0DEG
 Test Speed: HIGH
 Temperature: 25.3 °C
 Operators: DAMIN
 Test Date: 20 April 2026

γ Range: 0 - 180DEG
 γ Interval: 1.0DEG
 Test System: EVERFINE GO-2000B_V1 SYSTEM V2.00.459
 Humidity: 65.0%
 Test Distance: 7.380m [K=1.0000]
 Remarks:

CU AND LUMINAIRE BUDGETARY ESTIMATE DIAGRAM

Test:U:119.94V I:0.2700A P:29.545W PF:0.9123 Freq:59.98Hz Lamp Flux:2889.08x1 lm		
NAME: WS36-085-BN 30W 35K	TYPE:	WEIGHT:
SPEC.:	DIM.:	SERIAL No.: 1
MFR.: EVERFINE	SUR.:	Shielding Angle:

pcc	80%			70%			50%			30%			10%			0
pw	50%	30%	10%	50%	30%	10%	50%	30%	10%	50%	30%	10%	50%	30%	10%	0
pfc	20%			20%			20%			20%			20%			0
RCR	RCR:Room Cavity Ratio						Coefficients of Utilization(CU)									
0.0	1.14	1.14	1.14	1.09	1.09	1.09	.00	.00	.00	.91	.91	.91	.83	.83	.83	.79
1.0	.95	.90	.85	.91	.86	.81	.82	.79	.75	.75	.72	.69	.68	.66	.63	.60
2.0	.81	.73	.67	.77	.70	.64	.70	.65	.60	.64	.59	.55	.58	.54	.51	.47
3.0	.70	.61	.54	.67	.59	.52	.61	.54	.49	.56	.50	.45	.50	.46	.42	.39
4.0	.62	.52	.45	.59	.50	.44	.54	.46	.41	.49	.43	.38	.44	.39	.35	.32
5.0	.55	.45	.38	.52	.44	.37	.48	.40	.35	.44	.37	.32	.40	.34	.30	.27
6.0	.49	.40	.33	.47	.38	.32	.43	.36	.30	.39	.33	.28	.36	.30	.26	.24
7.0	.44	.35	.29	.42	.34	.28	.39	.32	.26	.36	.29	.25	.33	.27	.23	.21
8.0	.40	.31	.25	.38	.30	.25	.35	.28	.23	.33	.26	.22	.30	.25	.21	.18
9.0	.37	.28	.23	.35	.27	.22	.32	.26	.21	.30	.24	.20	.28	.22	.18	.16
10.0	.34	.26	.20	.32	.25	.20	.30	.23	.19	.28	.22	.18	.26	.20	.17	.15



C Range: 0 - 360DEG
 C Interval: 90.0DEG
 Test Speed: HIGH
 Temperature:25.3 °C
 Operators:DAMIN
 Test Date:20 April 2026

γ Range: 0 - 180DEG
 γ Interval: 1.0DEG
 Test System:EVERFINE GO-2000B_V1 SYSTEM V2.00.459
 Humidity:65.0%
 Test Distance:7.380m [K=1.0000]
 Remarks:

WEC AND CCEC

Test:U:119.94V I:0.2700A P:29.545W PF:0.9123 Freq:59.98Hz Lamp Flux:2889.08x1 lm		
NAME: WS36-085-BN 30W 35K	TYPE:	WEIGHT:
SPEC.:	DIM.:	SERIAL No.: 1
MFR.: EVERFINE	SUR.:	Shielding Angle:

ρ _{CC}	80%			70%			50%			30%			10%			0
ρ _w	50%	30%	10%	50%	30%	10%	50%	30%	10%	50%	30%	10%	50%	30%	10%	0
ρ _{fc}	20%			20%			20%			20%			20%			0
RCR	RCR:Room Cavity Ratio						Wall Exitance Coefficients(WEC)									
0.0																
1.0	.385	.219	.069	.371	.212	.067	.346	.199	.063	.323	.186	.060	.301	.175	.056	
2.0	.333	.182	.056	.321	.177	.054	.298	.166	.051	.277	.155	.049	.257	.145	.046	
3.0	.296	.157	.047	.285	.152	.046	.264	.143	.043	.244	.134	.041	.227	.125	.039	
4.0	.266	.138	.041	.256	.134	.040	.237	.126	.038	.220	.118	.036	.203	.110	.034	
5.0	.242	.123	.036	.233	.119	.035	.215	.112	.033	.199	.105	.031	.184	.099	.030	
6.0	.221	.111	.032	.213	.108	.031	.197	.101	.029	.183	.095	.028	.169	.089	.026	
7.0	.204	.101	.029	.197	.098	.028	.182	.092	.027	.169	.087	.025	.156	.081	.024	
8.0	.189	.093	.026	.182	.090	.025	.169	.085	.024	.157	.079	.023	.145	.074	.022	
9.0	.176	.085	.024	.170	.083	.023	.158	.078	.022	.146	.073	.021	.135	.069	.020	
10.0	.165	.079	.022	.159	.077	.021	.148	.072	.020	.137	.068	.019	.127	.064	.018	

ρ _{CC}	80%			70%			50%			30%			10%			0
ρ _w	50%	30%	10%	50%	30%	10%	50%	30%	10%	50%	30%	10%	50%	30%	10%	0
ρ _{fc}	20%			20%			20%			20%			20%			0
RCR	RCR:Room Cavity Ratio						Ceiling Cavity Exitance Coefficients(CCEC)									
0.0	.349	.349	.349	.298	.298	.298	.203	.203	.203	.117	.117	.117	.037	.037	.037	
1.0	.345	.315	.288	.295	.270	.248	.202	.186	.171	.116	.108	.100	.037	.035	.032	
2.0	.338	.292	.254	.290	.252	.219	.199	.174	.153	.115	.101	.090	.037	.033	.029	
3.0	.331	.276	.232	.284	.238	.201	.195	.165	.141	.112	.097	.083	.036	.031	.027	
4.0	.323	.264	.218	.277	.228	.189	.191	.159	.133	.110	.093	.079	.035	.030	.026	
5.0	.316	.254	.208	.271	.220	.181	.187	.153	.128	.108	.090	.076	.035	.029	.025	
6.0	.308	.246	.201	.265	.213	.175	.183	.149	.124	.106	.088	.074	.034	.029	.024	
7.0	.301	.239	.196	.259	.207	.171	.179	.145	.121	.104	.086	.072	.034	.028	.024	
8.0	.294	.234	.192	.253	.203	.168	.175	.142	.119	.102	.084	.071	.033	.028	.023	
9.0	.288	.229	.189	.248	.199	.165	.172	.140	.117	.100	.083	.070	.032	.027	.023	
10.0	.282	.225	.187	.243	.195	.163	.169	.137	.116	.098	.081	.069	.032	.027	.023	

C Range: 0 - 360DEG
 C Interval: 90.0DEG
 Test Speed: HIGH
 Temperature:25.3℃
 Operators:DAMIN
 Test Date:20 April 2026

γ Range: 0 - 180DEG
 γ Interval: 1.0DEG
 Test System:EVERFINE GO-2000B_V1 SYSTEM V2.00.459
 Humidity:65.0%
 Test Distance:7.380m [K=1.0000]
 Remarks:

UGR(Unified Glare Rating) Table

Test:U:119.94V I:0.2700A P:29.545W PF:0.9123 Freq:59.98Hz										
Lamp Flux:2889.08x1 lm										
NAME: WS36-085-BN 30W 35K					TYPE:			WEIGHT:		
SPEC.:					DIM.:			SERIAL No.: 1		
MFR.: EVERFINE					SUR.:			Shielding Angle:		
ceiling/cavity	0.7	0.7	0.5	0.5	0.3	0.7	0.7	0.5	0.5	0.3
walls	0.5	0.3	0.5	0.3	0.3	0.5	0.3	0.5	0.3	0.3
working plane	0.2	0.2	0.2	0.2	0.2	0.2	0.2	0.2	0.2	0.2
Room dimensions	Viewed crosswise					Viewed endwise				
x = 2H y = 2H	13.4	14.7	13.9	15.3	15.9	15.8	17.1	16.3	17.6	18.3
3H	14.9	16.2	15.5	16.8	17.4	18.6	19.8	19.2	20.4	21.1
4H	15.6	16.7	16.2	17.3	18.0	20.2	21.4	20.8	22.0	22.7
6H	16.0	17.1	16.6	17.7	18.4	22.0	23.1	22.6	23.7	24.4
8H	16.2	17.2	16.8	17.9	18.6	23.0	24.1	23.6	24.7	25.4
12H	16.3	17.3	16.9	17.9	18.7	24.2	25.2	24.8	25.8	26.6
4H 2H	14.6	15.7	15.2	16.3	17.0	16.3	17.4	16.8	18.0	18.7
3H	16.4	17.4	17.0	18.0	18.8	19.3	20.3	19.9	21.0	21.7
4H	17.2	18.2	17.9	18.8	19.6	21.1	22.0	21.7	22.7	23.4
6H	17.9	18.7	18.6	19.4	20.2	23.1	23.9	23.8	24.6	25.4
8H	18.1	18.9	18.8	19.6	20.4	24.2	25.0	24.9	25.7	26.5
12H	18.3	19.0	19.0	19.7	20.6	25.5	26.3	26.2	27.0	27.8
8H 4H	18.3	19.0	18.9	19.7	20.6	21.3	22.1	22.0	22.8	23.6
6H	19.3	20.0	20.0	20.7	21.5	23.6	24.3	24.3	25.0	25.8
8H	19.8	20.4	20.5	21.1	22.0	24.9	25.5	25.7	26.3	27.1
12H	20.2	20.7	20.9	21.4	22.3	26.5	27.0	27.3	27.8	28.7
12H 4H	18.6	19.3	19.3	20.0	20.9	21.4	22.1	22.1	22.8	23.6
6H	19.9	20.5	20.6	21.2	22.1	23.7	24.3	24.4	25.0	25.9
8H	20.5	21.0	21.3	21.8	22.7	25.1	25.6	25.9	26.4	27.3
Variations with the observer position at spacings(CIE Pub.117):										
S = 1.0H	+ 0.1 / - 0.1					+ 0.1 / - 0.1				
1.5H	+ 0.2 / - 0.3					+ 0.2 / - 0.2				
2.0H	+ 0.3 / - 0.5					+ 0.2 / - 0.3				

CIE Pub.117, 2889 lm Total Lamp Luminous Flux Correct (8log(F/F0) = 3.7)
Area: 0.1 m2

C Range: 0 - 360DEG	γ Range: 0 - 180DEG
C Interval: 90.0DEG	γ Interval: 1.0DEG
Test Speed: HIGH	Test System:EVERFINE GO-2000B_V1 SYSTEM V2.00.459
Temperature:25.3℃	Humidity:65.0%
Operators:DAMIN	Test Distance:7.380m [K=1.0000]
Test Date:20 April 2026	Remarks:

UTILIZATION FACTORS TABLE

Test:U:119.94V I:0.2700A P:29.545W PF:0.9123 Freq:59.98Hz Lamp Flux:2889.08x1 lm		
NAME: WS36-085-BN 30W 35K	TYPE:	WEIGHT:
SPEC.:	DIM.:	SERIAL No.: 1
MFR.: EVERFINE	SUR.:	Shielding Angle:

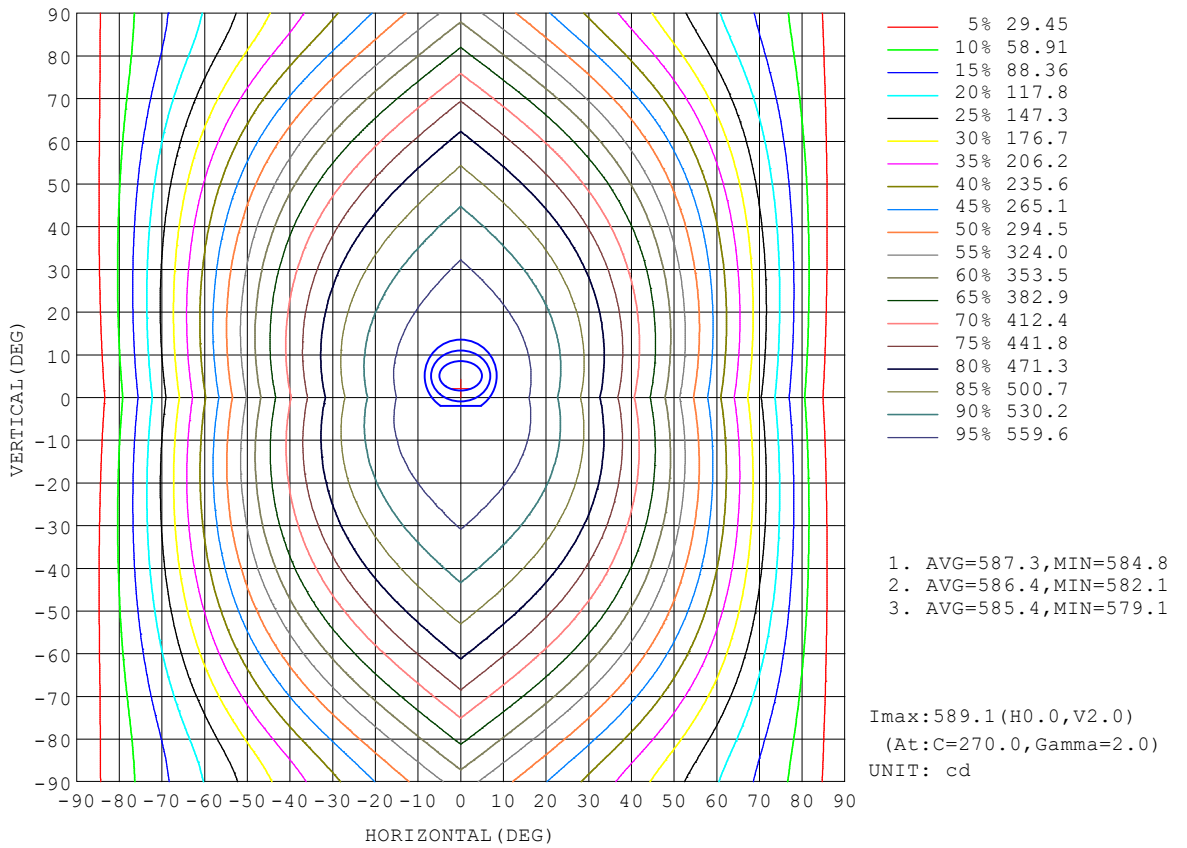
REFLECTANCE										
Ceiling	0.8	0.8	0.8	0.7	0.7	0.7	0.5	0.5	0.5	0
Walls	0.7	0.5	0.3	0.7	0.5	0.3	0.7	0.5	0.3	0
Working plane	0.2	0.2	0.2	0.2	0.2	0.2	0.2	0.2	0.2	0
ROOM INDEX	UTILIZATION FACTORS (PERCENT) $k(RI) \times RCR = 5$									
$k = 0.60$	47	34	27	46	34	27	44	33	26	20
0.80	56	43	35	54	42	34	51	40	33	25
1.00	64	51	42	62	49	42	58	50	40	31
1.25	71	58	49	68	56	48	63	54	46	36
1.50	76	63	55	73	62	54	68	58	51	40
2.00	83	72	64	80	70	62	74	65	59	47
2.50	88	77	69	84	75	67	77	70	64	50
3.00	91	82	74	87	79	72	80	74	68	54
4.00	96	88	81	92	85	79	84	79	74	58
5.00	99	92	86	95	89	83	87	82	77	61
ROOM INDEX	UF(total)									Direct
According to DIN EN 13032-2 2004			Suspended				SHRNOM = 1.25			

C Range: 0 - 360DEG
 C Interval: 90.0DEG
 Test Speed: HIGH
 Temperature:25.3°C
 Operators:DAMIN
 Test Date:20 April 2026

γ Range: 0 - 180DEG
 γ Interval: 1.0DEG
 Test System:EVERFINE GO-2000B_V1 SYSTEM V2.00.459
 Humidity:65.0%
 Test Distance:7.380m [K=1.0000]
 Remarks:

ISOCANDELA DIAGRAM

Test:U:119.94V I:0.2700A P:29.545W PF:0.9123 Freq:59.98Hz Lamp Flux:2889.08x1 lm		
NAME: WS36-085-BN 30W 35K	TYPE:	WEIGHT:
SPEC.:	DIM.:	SERIAL No.: 1
MFR.: EVERFINE	SUR.:	Shielding Angle:

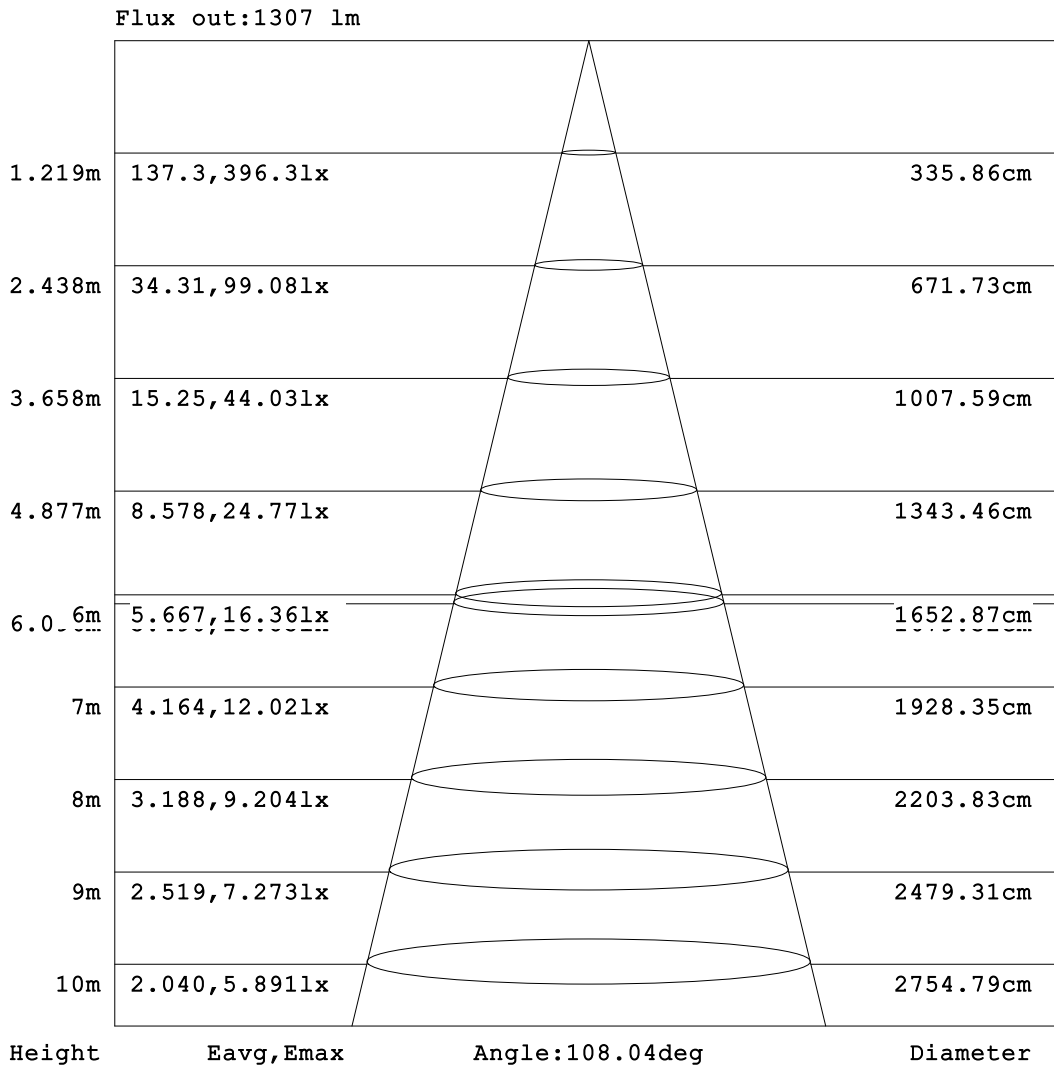


C Range: 0 - 360DEG
 C Interval: 90.0DEG
 Test Speed: HIGH
 Temperature:25.3 °C
 Operators:DAMIN
 Test Date:20 April 2026

γ Range: 0 - 180DEG
 γ Interval: 1.0DEG
 Test System:EVERFINE GO-2000B_V1 SYSTEM V2.00.459
 Humidity:65.0%
 Test Distance:7.380m [K=1.0000]
 Remarks:

AAI Figure

Test:U:119.94V I:0.2700A P:29.545W PF:0.9123 Freq:59.98Hz Lamp Flux:2889.08x1 lm		
NAME: WS36-085-BN 30W 35K	TYPE:	WEIGHT:
SPEC.:	DIM.:	SERIAL No.: 1
MFR.: EVERFINE	SUR.:	Shielding Angle:



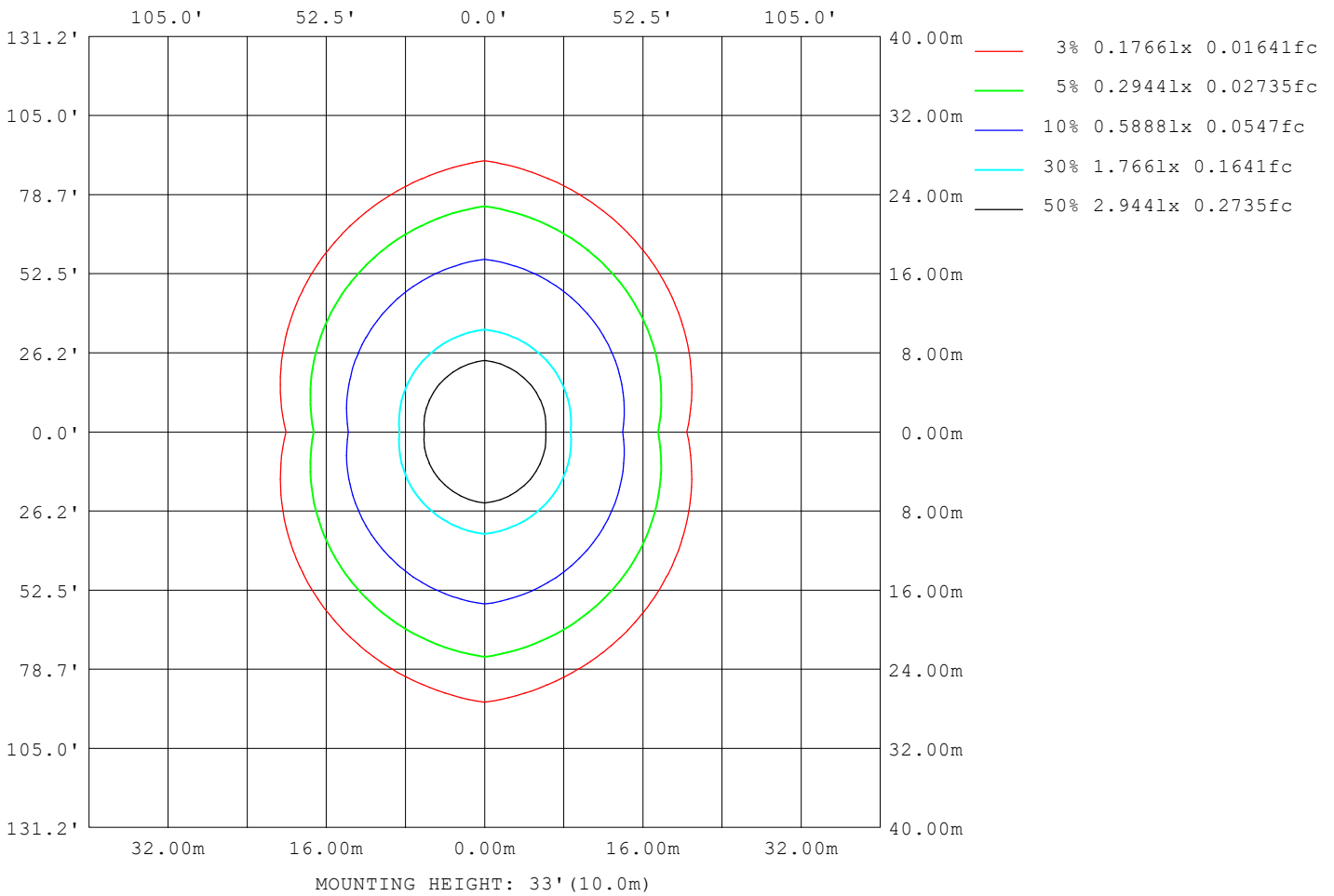
Note: The Curves indicate the illuminated area and the average illumination when the luminaire is at different distance.

C Range: 0 - 360DEG
 C Interval: 90.0DEG
 Test Speed: HIGH
 Temperature: 25.3 °C
 Operators: DAMIN
 Test Date: 20 April 2026

γ Range: 0 - 180DEG
 γ Interval: 1.0DEG
 Test System: EVERFINE GO-2000B_V1 SYSTEM V2.00.459
 Humidity: 65.0%
 Test Distance: 7.380m [K=1.0000]
 Remarks:

ISOLUX DIAGRAM

Test:U:119.94V I:0.2700A P:29.545W PF:0.9123 Freq:59.98Hz Lamp Flux:2889.08x1 lm		
NAME: WS36-085-BN 30W 35K	TYPE:	WEIGHT:
SPEC.:	DIM.:	SERIAL No.: 1
MFR.: EVERFINE	SUR.:	Shielding Angle:



C Range: 0 - 360DEG
 C Interval: 90.0DEG
 Test Speed: HIGH
 Temperature:25.3 °C
 Operators:DAMIN
 Test Date:20 April 2026

γ Range: 0 - 180DEG
 γ Interval: 1.0DEG
 Test System:EVERFINE GO-2000B_V1 SYSTEM V2.00.459
 Humidity:65.0%
 Test Distance:7.380m [K=1.0000]
 Remarks:

LED Avg.L Report

Test:U:119.94V I:0.2700A P:29.545W PF:0.9123 Freq:59.98Hz Lamp Flux:2889.08x1 lm		
NAME: WS36-085-BN 30W 35K	TYPE:	WEIGHT:
SPEC.:	DIM.:	SERIAL No.: 1
MFR.: EVERFINE	SUR.:	Shielding Angle:

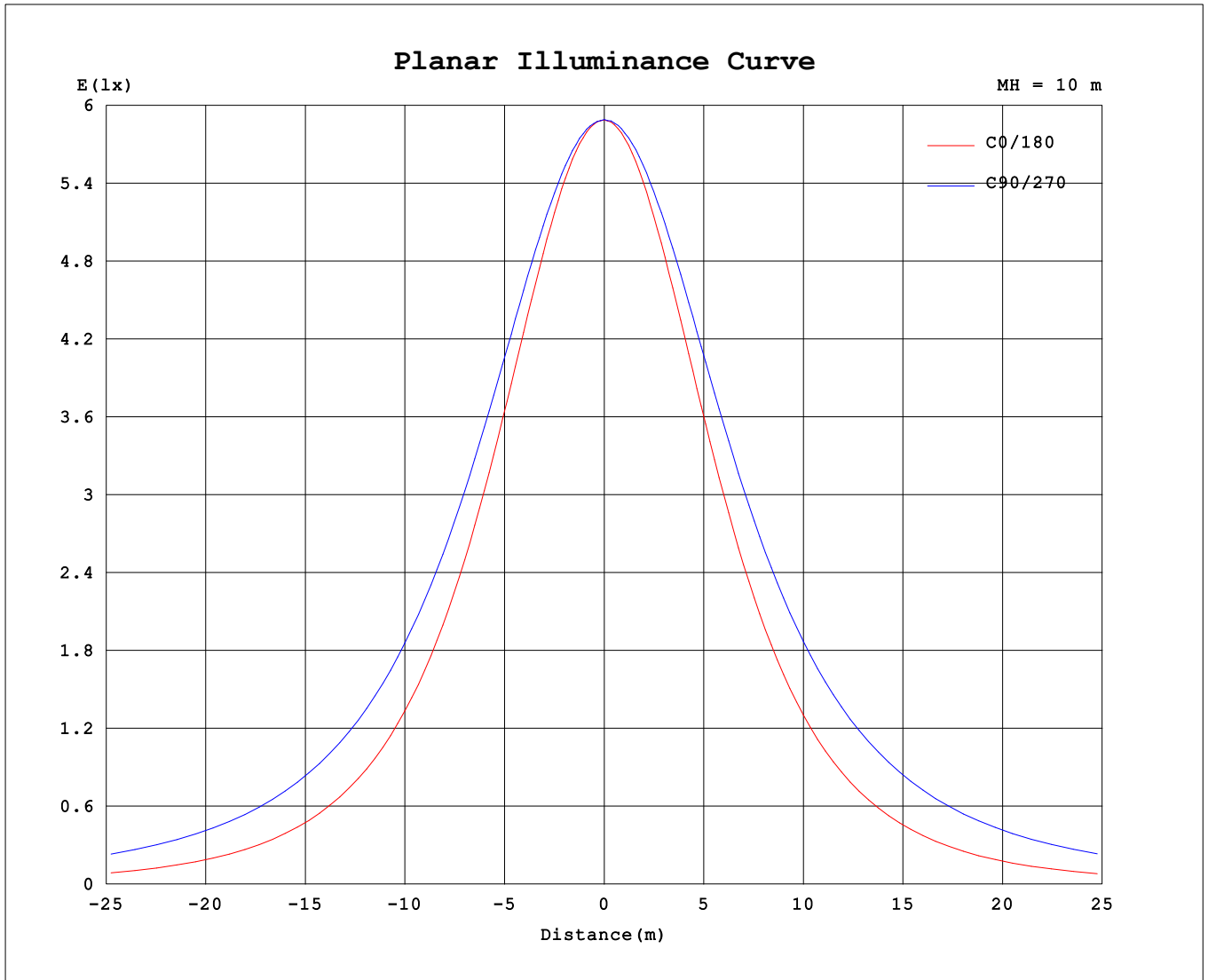
AvgL	cd/m2
L_0~180 (65) av	4531
L_0~180 (75) av	3836
L_0~180 (85) av	2835
L_90~270 (65) av	10845
L_90~270 (75) av	16023
L_90~270 (85) av	42038
L_45 (65) av	8467
L_45 (75) av	11438
L_45 (85) av	27308

Standard: GB/T 29293-2012

C Range: 0 - 360DEG
 C Interval: 90.0DEG
 Test Speed: HIGH
 Temperature:25.3℃
 Operators:DAMIN
 Test Date:20 April 2026

γ Range: 0 - 180DEG
 γ Interval: 1.0DEG
 Test System:EVERFINE GO-2000B_V1 SYSTEM V2.00.459
 Humidity:65.0%
 Test Distance:7.380m [K=1.0000]
 Remarks:

Planar Illuminance Curve



C Range: 0 - 360DEG
 C Interval: 90.0DEG
 Test Speed: HIGH
 Temperature: 25.3 °C
 Operators: DAMIN
 Test Date: 20 April 2026

γ Range: 0 - 180DEG
 γ Interval: 1.0DEG
 Test System: EVERFINE GO-2000B_V1 SYSTEM V2.00.459
 Humidity: 65.0%
 Test Distance: 7.380m [K=1.0000]
 Remarks:

LUMINOUS DISTRIBUTION INTENSITY DATA

Test:U:119.94V I:0.2700A P:29.545W PF:0.9123 Freq:59.98Hz Lamp Flux:2889.08x1 lm		
NAME: WS36-085-BN 30W 35K	TYPE:	WEIGHT:
SPEC.:	DIM.:	SERIAL No.: 1
MFR.: EVERFINE	SUR.:	Shielding Angle:

Table--1

UNIT: cd

C (DEG) \ γ (DEG)	0	90	180	270															
0	589	589	589	589															
5	586	588	585	589															
10	577	586	576	587															
15	563	582	560	583															
20	543	577	539	578															
25	518	570	513	572															
30	488	561	482	564															
35	455	551	448	554															
40	418	540	410	543															
45	378	526	369	529															
50	335	511	326	515															
55	290	494	280	498															
60	245	476	233	480															
65	198	456	185	460															
70	151	436	138	439															
75	105	413	93.3	416															
80	63.6	390	52.5	392															
85	28.8	365	20.6	368															
90	10.0	339	8.79	342															
95	10.2	299	9.99	302															
100	12.6	252	13.2	253															
105	16.3	202	17.5	204															
110	20.6	184	22.2	183															
115	25.4	175	26.3	174															
120	26.4	155	26.5	155															
125	28.6	134	27.0	133															
130	31.2	120	29.8	119															
135	33.9	109	32.4	107															
140	35.6	98.9	33.6	90.3															
145	36.8	89.4	35.2	84.3															
150	38.5	79.8	36.9	77.4															
155	40.0	72.5	38.2	69.0															
160	43.1	68.3	41.4	66.6															
165	52.2	63.9	50.9	62.4															
170	56.0	54.0	54.8	58.3															
175	59.8	40.8	58.5	49.2															
180	59.9	35.4	59.8	35.4															

C Range: 0 - 360DEG
 C Interval: 90.0DEG
 Test Speed: HIGH
 Temperature:25.3℃
 Operators:DAMIN
 Test Date:20 April 2026

γ Range: 0 - 180DEG
 γ Interval: 1.0DEG
 Test System:EVERFINE GO-2000B_V1 SYSTEM V2.00.459
 Humidity:65.0%
 Test Distance:7.380m [K=1.0000]
 Remarks: