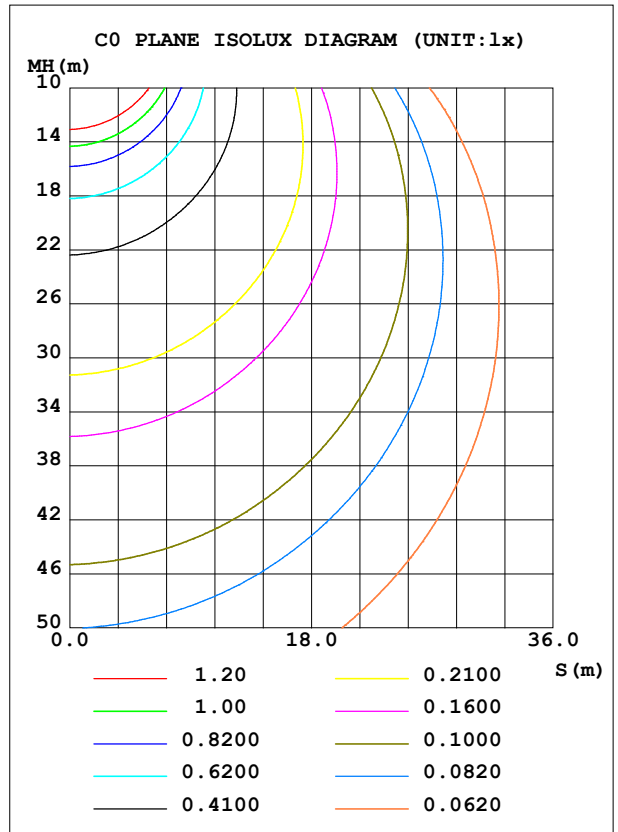
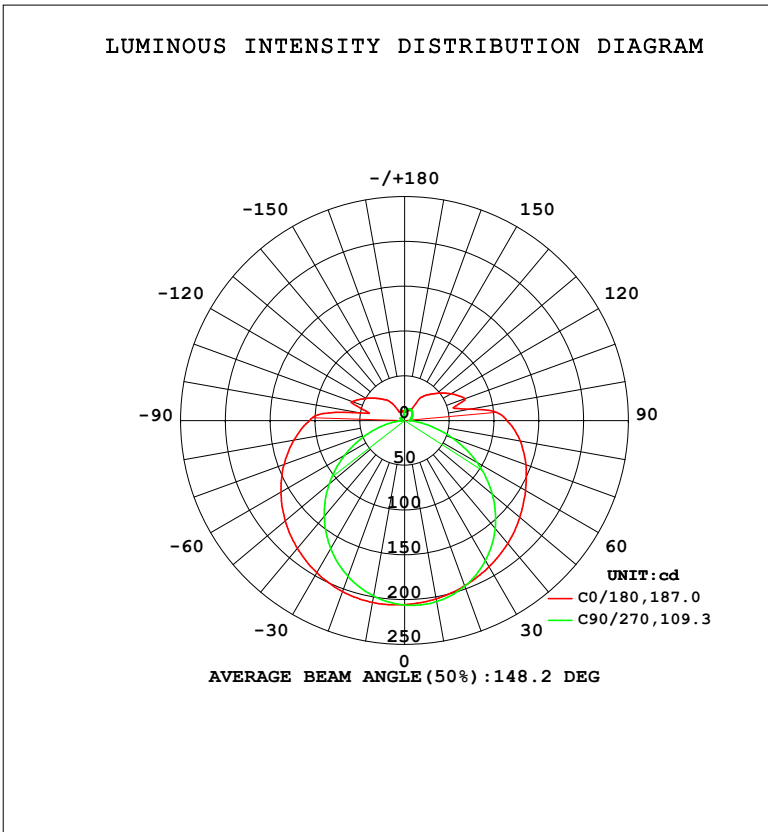


LUMINAIRE PHOTOMETRIC TEST REPORT

Test:U:120.14V I:0.1442A P:16.241W PF:0.9374 Freq:59.98Hz Lamp Flux:965.204x1 lm		
NAME: WS14-033B-BK 16W 27K	TYPE:	WEIGHT:
SPEC.:	DIM.:	SERIAL No.: 1
MFR.: EVERFINE	SUR.:	Shielding Angle:

DATA OF LAMP		PHOTOMETRIC DATA				Eff: 59.43 lm/W
MODEL	2700K	I <sub>max</sub> (cd)	206.6	S/MH (C0/180)	1.44	
NOMINAL POWER (W)	16	LOR (%)	100.0	S/MH (C90/270)	1.20	
RATED VOLTAGE (V)	120	TOTAL FLUX (lm)	965.20	η UP, DN (C0-180)	10.7, 41.4	
NOMINAL FLUX (lm)	965.204	CIE CLASS	SEMI-D.	η UP, DN (C180-360)	8.3, 39.6	
LAMPS INSIDE	1	η up (%)	19.0	CIBSE SHR NOM	1.50	
TEST VOLTAGE (V)	120	η down (%)	81.0	CIBSE SHR MAX	1.50	



C Range: 0 - 360DEG  
 C Interval: 90.0DEG  
 Test Speed: HIGH  
 Temperature: 25.3 °C  
 Operators: DAMIN  
 Test Date: 10 February 2026

γ Range: 0 - 180DEG  
 γ Interval: 1.0DEG  
 Test System: EVERFINE GO-2000B\_V1 SYSTEM V2.00.459  
 Humidity: 65.0%  
 Test Distance: 7.380m [K=1.0000]  
 Remarks:

ZONAL FLUX DIAGRAM

ZONAL FLUX DIAGRAM:

$\gamma$	C0	C90	C180	C270				$\gamma$	$\Phi$ zone	$\Phi$ total	%lum,lamp
10	202.1	205.2	206.2	199.0				0- 10	19.51	19.51	2.02,2.02
20	196.3	196.8	203.2	185.0				10- 20	56.48	75.99	7.87,7.87
30	188.6	180.6	196.3	165.1				20- 30	87.46	163.4	16.9,16.9
40	179.2	157.3	186.3	139.6				30- 40	109.4	272.8	28.3,28.3
50	167.9	127.9	174.1	110.0				40- 50	120.2	393.1	40.7,40.7
60	155.9	93.46	159.5	77.34				50- 60	119.5	512.5	53.1,53.1
70	144.4	56.71	143.2	44.27				60- 70	108.4	620.9	64.3,64.3
80	131.1	22.92	125.5	15.55				70- 80	90.01	710.9	73.7,73.7
90	114.3	5.834	106.3	4.049				80- 90	70.56	781.5	81,81
100	74.62	6.270	50.50	4.142				90-100	53.71	835.2	86.5,86.5
110	71.72	7.631	62.40	4.643				100-110	33.25	868.5	90,90
120	60.05	9.283	49.88	5.721				110-120	33.77	902.2	93.5,93.5
130	47.66	11.05	38.67	4.588				120-130	25.48	927.7	96.1,96.1
140	36.91	12.77	29.47	5.243				130-140	17.98	945.7	98,98
150	14.31	14.11	11.82	4.289				140-150	10.61	956.3	99.1,99.1
160	12.31	14.11	10.63	4.428				150-160	4.990	961.3	99.6,99.6
170	12.61	11.66	11.00	5.698				160-170	2.955	964.2	99.9,99.9
180	11.10	11.01	11.07	11.15				170-180	0.9686	965.2	100,100
DEG	LUMINOUS INTENSITY:cd								UNIT:lm		

Conical surface Flux(90deg): 332.31 lm

%lum = 34.4%

%lamp = 34.4%

Conical surface Flux(120deg): 512.53 lm

%lum = 53.1%

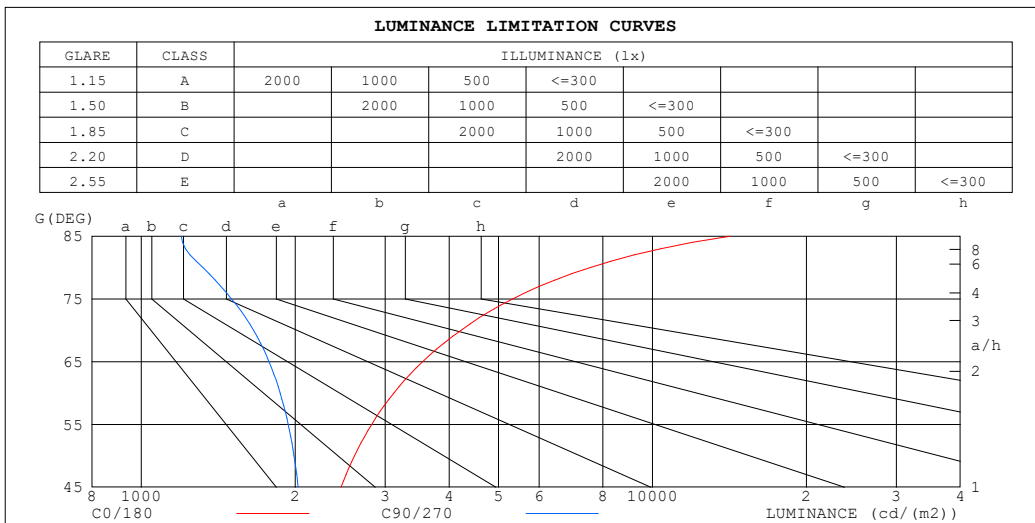
%lamp = 53.1%

C Range: 0 - 360DEG  
 C Interval: 90.0DEG  
 Test Speed: HIGH  
 Temperature:25.3°C  
 Operators:DAMIN  
 Test Date:10 February 2026

$\gamma$  Range: 0 - 180DEG  
 $\gamma$  Interval: 1.0DEG  
 Test System:EVERFINE GO-2000B\_V1 SYSTEM V2.00.459  
 Humidity:65.0%  
 Test Distance:7.380m [K=1.0000]  
 Remarks:

**LUMINANCE LIMITATION CURVES**

Test:U:120.14V I:0.1442A P:16.241W PF:0.9374 Freq:59.98Hz Lamp Flux:965.204x1 lm		
NAME: WS14-033B-BK 16W 27K	TYPE:	WEIGHT:
SPEC.:	DIM.:	SERIAL No.: 1
MFR.: EVERFINE	SUR.:	Shielding Angle:



LUMINANCE cd/(m2)		
G (DEG)	C0/180	C90/270
85	14167	1198
80	7550	1320
75	5323	1502
70	4221	1658
65	3549	1778
60	3119	1869
55	2822	1938
50	2612	1989
45	2458	2026

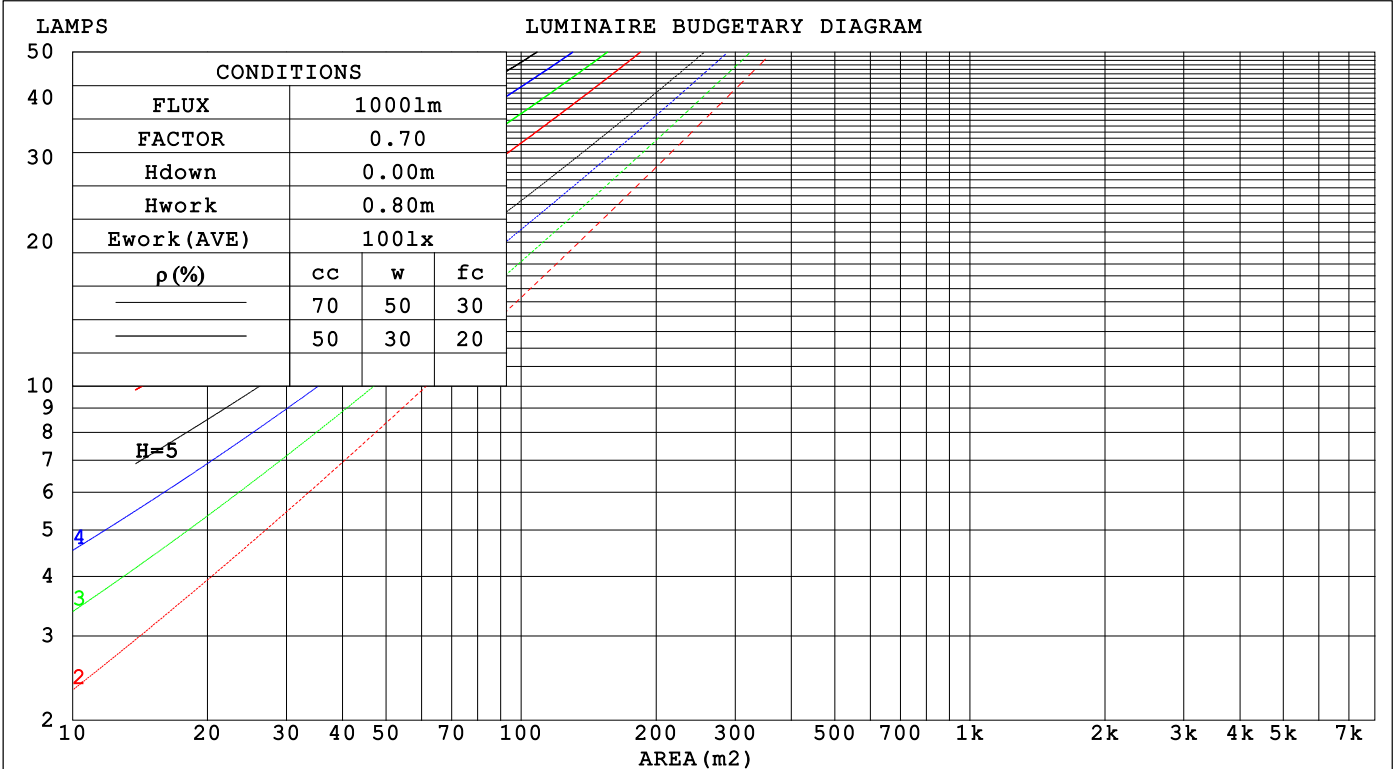
C Range: 0 - 360DEG  
 C Interval: 90.0DEG  
 Test Speed: HIGH  
 Temperature: 25.3 °C  
 Operators: DAMIN  
 Test Date: 10 February 2026

γ Range: 0 - 180DEG  
 γ Interval: 1.0DEG  
 Test System: EVERFINE GO-2000B\_V1 SYSTEM V2.00.459  
 Humidity: 65.0%  
 Test Distance: 7.380m [K=1.0000]  
 Remarks:

CU AND LUMINAIRE BUDGETARY ESTIMATE DIAGRAM

Test:U:120.14V I:0.1442A P:16.241W PF:0.9374 Freq:59.98Hz Lamp Flux:965.204x1 lm		
NAME: WS14-033B-BK 16W 27K	TYPE:	WEIGHT:
SPEC.:	DIM.:	SERIAL No.: 1
MFR.: EVERFINE	SUR.:	Shielding Angle:

pcc	80%			70%			50%			30%			10%			0
pw	50%	30%	10%	50%	30%	10%	50%	30%	10%	50%	30%	10%	50%	30%	10%	0
pfc	20%			20%			20%			20%			20%			0
RCR	RCR:Room Cavity Ratio						Coefficients of Utilization(CU)									
0.0	1.15	1.15	1.15	1.10	1.10	1.10	1.01	1.01	1.01	.92	.92	.92	.85	.85	.85	.81
1.0	.95	.90	.85	.91	.87	.82	.83	.80	.76	.76	.73	.70	.70	.67	.65	.61
2.0	.82	.74	.67	.78	.71	.65	.71	.66	.61	.65	.60	.56	.59	.56	.52	.49
3.0	.71	.62	.55	.68	.60	.53	.62	.55	.50	.57	.51	.46	.52	.47	.43	.40
4.0	.62	.53	.46	.60	.51	.44	.55	.47	.42	.50	.44	.39	.46	.41	.36	.33
5.0	.55	.46	.39	.53	.44	.38	.49	.41	.35	.45	.38	.33	.41	.35	.31	.29
6.0	.49	.40	.33	.47	.39	.32	.44	.36	.31	.40	.34	.29	.37	.31	.27	.25
7.0	.45	.35	.29	.43	.34	.28	.40	.32	.27	.36	.30	.25	.34	.28	.24	.22
8.0	.40	.32	.26	.39	.31	.25	.36	.29	.24	.33	.27	.23	.31	.25	.21	.19
9.0	.37	.29	.23	.36	.28	.22	.33	.26	.21	.31	.25	.20	.28	.23	.19	.17
10.0	.34	.26	.21	.33	.25	.20	.30	.24	.19	.28	.22	.18	.26	.21	.17	.15



C Range: 0 - 360DEG  
 C Interval: 90.0DEG  
 Test Speed: HIGH  
 Temperature:25.3 °C  
 Operators:DAMIN  
 Test Date:10 February 2026

γ Range: 0 - 180DEG  
 γ Interval: 1.0DEG  
 Test System:EVERFINE GO-2000B\_V1 SYSTEM V2.00.459  
 Humidity:65.0%  
 Test Distance:7.380m [K=1.0000]  
 Remarks:

WEC AND CCEC

Test:U:120.14V I:0.1442A P:16.241W PF:0.9374 Freq:59.98Hz Lamp Flux:965.204x1 lm		
NAME: WS14-033B-BK 16W 27K	TYPE:	WEIGHT:
SPEC.:	DIM.:	SERIAL No.: 1
MFR.: EVERFINE	SUR.:	Shielding Angle:

$\rho_{CC}$	80%			70%			50%			30%			10%			0
$\rho_w$	50%	30%	10%	50%	30%	10%	50%	30%	10%	50%	30%	10%	50%	30%	10%	0
$\rho_{fc}$	20%			20%			20%			20%			20%			0
RCR	RCR:Room Cavity Ratio						Wall Exitance Coefficients(WEC)									
0.0																
1.0	.383	.218	.069	.370	.211	.067	.345	.198	.063	.323	.186	.060	.302	.175	.056	
2.0	.332	.182	.056	.320	.176	.054	.298	.166	.051	.278	.156	.049	.259	.146	.046	
3.0	.295	.157	.047	.284	.152	.046	.264	.143	.044	.246	.135	.041	.229	.127	.039	
4.0	.266	.138	.041	.256	.134	.040	.238	.126	.038	.221	.119	.036	.206	.112	.034	
5.0	.242	.123	.036	.233	.120	.035	.216	.113	.033	.201	.106	.032	.187	.100	.030	
6.0	.221	.111	.032	.213	.108	.031	.198	.102	.030	.184	.096	.028	.171	.090	.027	
7.0	.204	.101	.029	.197	.098	.028	.183	.093	.027	.170	.087	.025	.158	.082	.024	
8.0	.189	.093	.026	.183	.090	.025	.170	.085	.024	.158	.080	.023	.147	.076	.022	
9.0	.177	.085	.024	.170	.083	.023	.159	.079	.022	.148	.074	.021	.138	.070	.020	
10.0	.165	.079	.022	.160	.077	.022	.149	.073	.021	.139	.069	.020	.129	.065	.019	

$\rho_{CC}$	80%			70%			50%			30%			10%			0
$\rho_w$	50%	30%	10%	50%	30%	10%	50%	30%	10%	50%	30%	10%	50%	30%	10%	0
$\rho_{fc}$	20%			20%			20%			20%			20%			0
RCR	RCR:Room Cavity Ratio						Ceiling Cavity Exitance Coefficients(CCEC)									
0.0																
1.0	.335	.335	.335	.287	.287	.287	.196	.196	.196	.112	.112	.112	.036	.036	.036	
2.0	.332	.302	.275	.284	.259	.237	.194	.178	.164	.112	.103	.095	.036	.033	.031	
3.0	.325	.279	.240	.278	.240	.208	.191	.166	.145	.110	.097	.085	.035	.031	.028	
4.0	.317	.262	.219	.272	.226	.190	.187	.157	.133	.108	.092	.078	.035	.030	.026	
5.0	.310	.250	.204	.266	.216	.178	.183	.151	.125	.106	.088	.074	.034	.029	.024	
6.0	.302	.240	.195	.259	.208	.169	.179	.145	.120	.103	.085	.071	.033	.028	.023	
7.0	.294	.232	.188	.253	.201	.163	.175	.141	.116	.101	.083	.069	.033	.027	.023	
8.0	.287	.226	.182	.247	.196	.159	.171	.137	.113	.099	.081	.067	.032	.026	.022	
9.0	.281	.220	.178	.242	.191	.156	.167	.134	.110	.097	.079	.066	.031	.026	.022	
10.0	.275	.215	.175	.236	.187	.153	.164	.131	.109	.095	.078	.065	.031	.025	.021	
10.0	.269	.211	.173	.232	.183	.151	.161	.129	.107	.094	.076	.064	.030	.025	.021	

C Range: 0 - 360DEG  
 C Interval: 90.0DEG  
 Test Speed: HIGH  
 Temperature:25.3°C  
 Operators:DAMIN  
 Test Date:10 February 2026

$\gamma$  Range: 0 - 180DEG  
 $\gamma$  Interval: 1.0DEG  
 Test System:EVERFINE GO-2000B\_V1 SYSTEM V2.00.459  
 Humidity:65.0%  
 Test Distance:7.380m [K=1.0000]  
 Remarks:

UGR(Unified Glare Rating) Table

Test:U:120.14V I:0.1442A P:16.241W PF:0.9374 Freq:59.98Hz										
Lamp Flux:965.204x1 lm										
NAME: WS14-033B-BK 16W 27K					TYPE:			WEIGHT:		
SPEC.:					DIM.:			SERIAL No.: 1		
MFR.: EVERFINE					SUR.:			Shielding Angle:		
ceiling/cavity	0.7	0.7	0.5	0.5	0.3	0.7	0.7	0.5	0.5	0.3
walls	0.5	0.3	0.5	0.3	0.3	0.5	0.3	0.5	0.3	0.3
working plane	0.2	0.2	0.2	0.2	0.2	0.2	0.2	0.2	0.2	0.2
Room dimensions	Viewed crosswise					Viewed endwise				
x = 2H y = 2H	15.8	17.2	16.3	17.7	18.3	14.0	15.4	14.5	15.9	16.5
3H	18.6	19.9	19.2	20.4	21.1	15.6	16.8	16.1	17.4	18.0
4H	20.3	21.4	20.8	22.0	22.7	16.2	17.4	16.8	17.9	18.6
6H	22.1	23.2	22.7	23.8	24.5	16.6	17.7	17.2	18.3	19.0
8H	23.1	24.2	23.7	24.8	25.5	16.8	17.8	17.4	18.4	19.1
12H	24.3	25.3	24.9	25.9	26.6	16.8	17.9	17.5	18.5	19.2
4H 2H	16.3	17.5	16.9	18.1	18.8	15.1	16.2	15.6	16.8	17.5
3H	19.4	20.4	20.0	21.0	21.7	16.9	17.9	17.5	18.5	19.2
4H	21.1	22.1	21.8	22.7	23.5	17.7	18.7	18.3	19.3	20.0
6H	23.2	24.0	23.8	24.7	25.4	18.3	19.2	19.0	19.9	20.6
8H	24.3	25.1	25.0	25.8	26.6	18.6	19.4	19.3	20.1	20.8
12H	25.6	26.4	26.3	27.1	27.9	18.8	19.5	19.4	20.2	21.0
8H 4H	21.4	22.2	22.1	22.9	23.7	18.7	19.5	19.3	20.1	20.9
6H	23.7	24.4	24.4	25.1	25.9	19.7	20.4	20.4	21.1	21.9
8H	25.1	25.7	25.8	26.4	27.2	20.1	20.7	20.9	21.5	22.3
12H	26.6	27.2	27.4	27.9	28.8	20.5	21.1	21.3	21.8	22.7
12H 4H	21.4	22.2	22.1	22.9	23.7	19.0	19.7	19.7	20.4	21.2
6H	23.8	24.4	24.5	25.1	26.0	20.2	20.8	20.9	21.5	22.4
8H	25.2	25.8	26.0	26.5	27.4	20.8	21.4	21.6	22.1	23.0
Variations with the observer position at spacings(CIE Pub.117):										
S = 1.0H	+ 0.1 / - 0.1					+ 0.1 / - 0.1				
1.5H	+ 0.2 / - 0.2					+ 0.2 / - 0.3				
2.0H	+ 0.2 / - 0.3					+ 0.2 / - 0.4				

CIE Pub.117, 965.2 lm Total Lamp Luminous Flux Correct (8log(F/F0) = -0.1)  
 Area: 0.1 m2

C Range: 0 - 360DEG	γ Range: 0 - 180DEG
C Interval: 90.0DEG	γ Interval: 1.0DEG
Test Speed: HIGH	Test System:EVERFINE GO-2000B_V1 SYSTEM V2.00.459
Temperature:25.3℃	Humidity:65.0%
Operators:DAMIN	Test Distance:7.380m [K=1.0000]
Test Date:10 February 2026	Remarks:

**UTILIZATION FACTORS TABLE**

Test:U:120.14V I:0.1442A P:16.241W PF:0.9374 Freq:59.98Hz Lamp Flux:965.204x1 lm		
NAME: WS14-033B-BK 16W 27K	TYPE:	WEIGHT:
SPEC.:	DIM.:	SERIAL No.: 1
MFR.: EVERFINE	SUR.:	Shielding Angle:

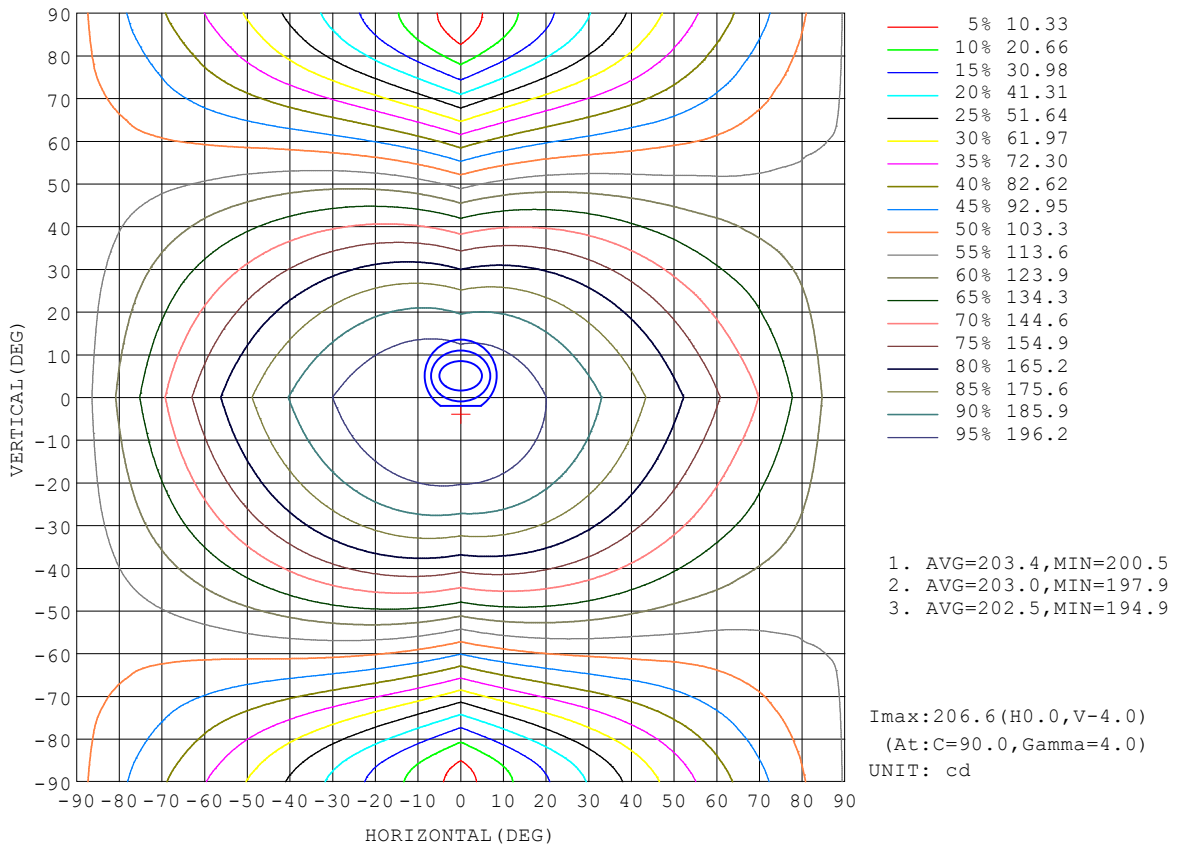
REFLECTANCE										
Ceiling	0.8	0.8	0.8	0.7	0.7	0.7	0.5	0.5	0.5	0
Walls	0.7	0.5	0.3	0.7	0.5	0.3	0.7	0.5	0.3	0
Working plane	0.2	0.2	0.2	0.2	0.2	0.2	0.2	0.2	0.2	0
ROOM INDEX	UTILIZATION FACTORS (PERCENT) $k(RI) \times RCR = 5$									
$k = 0.60$	48	35	28	46	35	28	44	34	27	20
0.80	57	44	36	55	43	35	52	41	34	26
1.00	64	52	43	62	50	43	59	51	41	32
1.25	71	59	50	69	57	49	65	55	48	38
1.50	77	64	56	74	63	55	69	59	52	42
2.00	84	73	65	81	71	63	75	66	60	48
2.50	88	78	70	85	76	68	78	71	65	52
3.00	92	83	75	88	80	73	81	75	69	55
4.00	97	89	82	93	86	80	85	80	75	60
5.00	100	93	87	96	89	84	88	83	79	63
ROOM INDEX	UF(total)									Direct
According to DIN EN 13032-2 2004			Suspended				SHRNOM = 1.25			

C Range: 0 - 360DEG  
 C Interval: 90.0DEG  
 Test Speed: HIGH  
 Temperature:25.3°C  
 Operators:DAMIN  
 Test Date:10 February 2026

$\gamma$  Range: 0 - 180DEG  
 $\gamma$  Interval: 1.0DEG  
 Test System:EVERFINE GO-2000B\_V1 SYSTEM V2.00.459  
 Humidity:65.0%  
 Test Distance:7.380m [K=1.0000]  
 Remarks:

**ISOCANDELA DIAGRAM**

Test:U:120.14V I:0.1442A P:16.241W PF:0.9374 Freq:59.98Hz Lamp Flux:965.204x1 lm		
NAME: WS14-033B-BK 16W 27K	TYPE:	WEIGHT:
SPEC.:	DIM.:	SERIAL No.: 1
MFR.: EVERFINE	SUR.:	Shielding Angle:

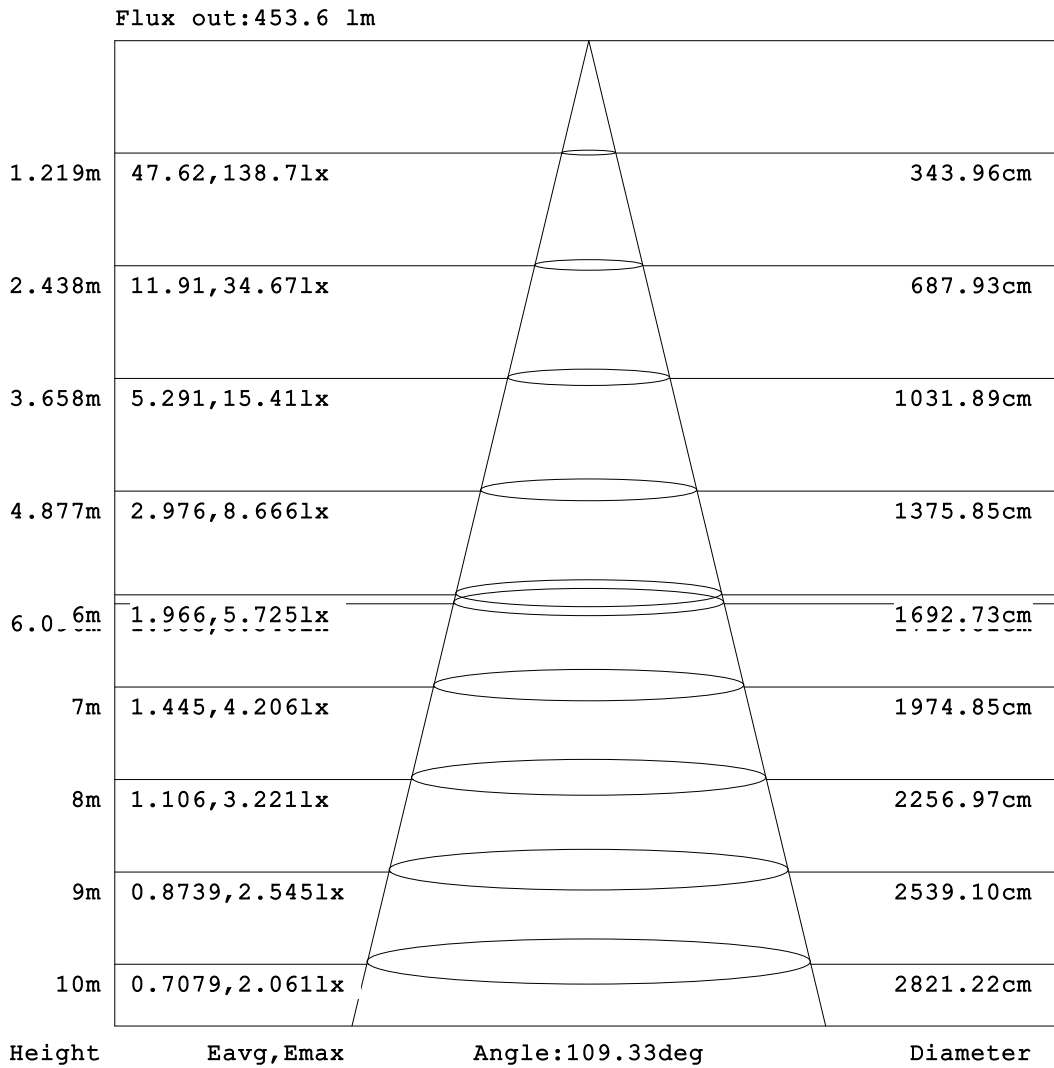


C Range: 0 - 360DEG  
 C Interval: 90.0DEG  
 Test Speed: HIGH  
 Temperature:25.3°C  
 Operators:DAMIN  
 Test Date:10 February 2026

γ Range: 0 - 180DEG  
 γ Interval: 1.0DEG  
 Test System:EVERFINE GO-2000B\_V1 SYSTEM V2.00.459  
 Humidity:65.0%  
 Test Distance:7.380m [K=1.0000]  
 Remarks:

**AAI Figure**

Test:U:120.14V I:0.1442A P:16.241W PF:0.9374 Freq:59.98Hz Lamp Flux:965.204x1 lm		
NAME: WS14-033B-BK 16W 27K	TYPE:	WEIGHT:
SPEC.:	DIM.:	SERIAL No.: 1
MFR.: EVERFINE	SUR.:	Shielding Angle:



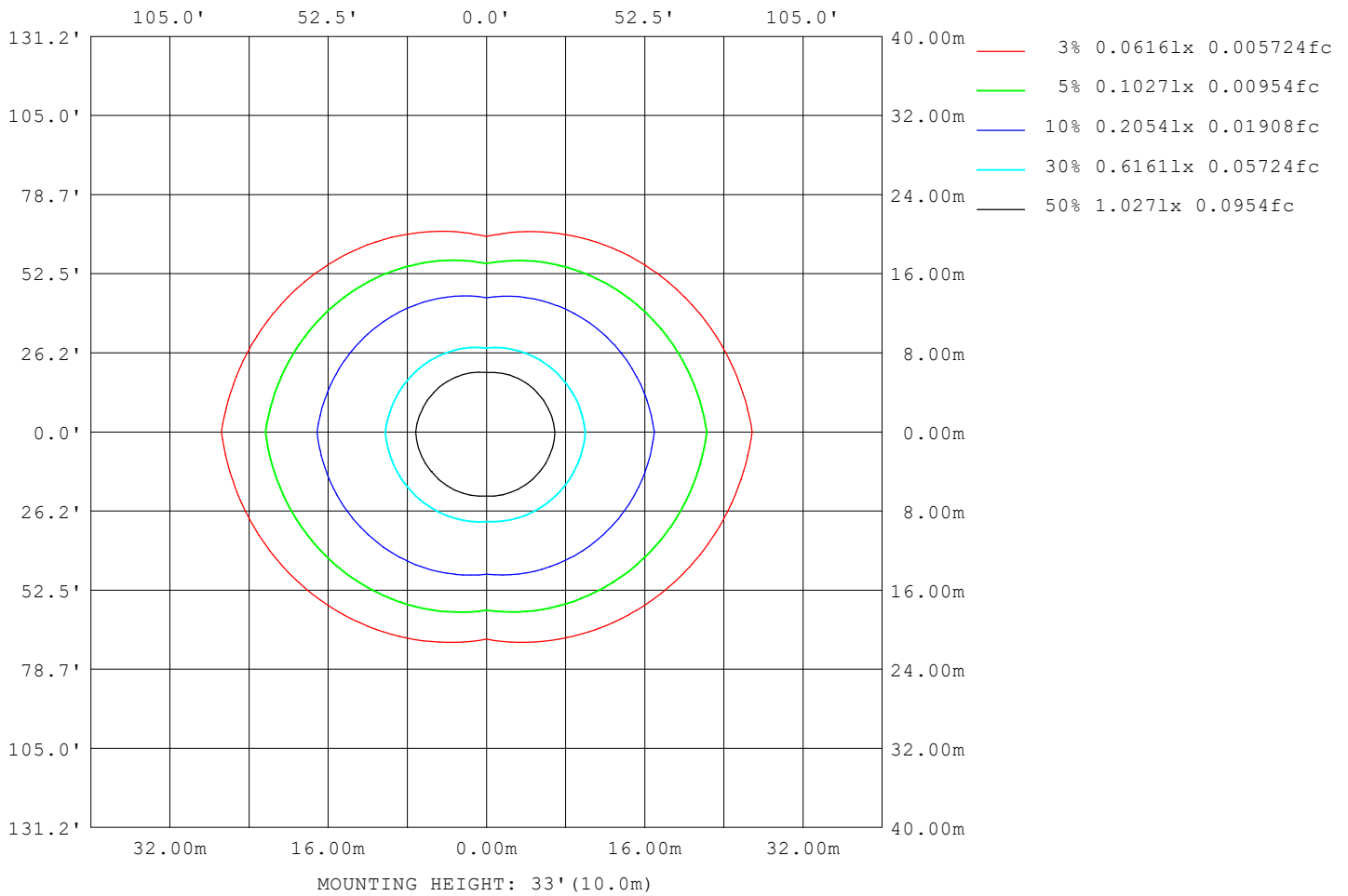
Note:The Curves indicate the illuminated area and the average illumination when the luminaire is at different distance.

C Range: 0 - 360DEG  
 C Interval: 90.0DEG  
 Test Speed: HIGH  
 Temperature:25.3°C  
 Operators:DAMIN  
 Test Date:10 February 2026

γ Range: 0 - 180DEG  
 γ Interval: 1.0DEG  
 Test System:EVERFINE GO-2000B\_V1 SYSTEM V2.00.459  
 Humidity:65.0%  
 Test Distance:7.380m [K=1.0000]  
 Remarks:

**ISOLUX DIAGRAM**

Test:U:120.14V I:0.1442A P:16.241W PF:0.9374 Freq:59.98Hz Lamp Flux:965.204x1 lm		
NAME: WS14-033B-BK 16W 27K	TYPE:	WEIGHT:
SPEC.:	DIM.:	SERIAL No.: 1
MFR.: EVERFINE	SUR.:	Shielding Angle:



C Range: 0 - 360DEG  
 C Interval: 90.0DEG  
 Test Speed: HIGH  
 Temperature:25.3°C  
 Operators:DAMIN  
 Test Date:10 February 2026

γ Range: 0 - 180DEG  
 γ Interval: 1.0DEG  
 Test System:EVERFINE GO-2000B\_V1 SYSTEM V2.00.459  
 Humidity:65.0%  
 Test Distance:7.380m [K=1.0000]  
 Remarks:

**LED Avg.L Report**

Test:U:120.14V I:0.1442A P:16.241W PF:0.9374 Freq:59.98Hz Lamp Flux:965.204x1 lm		
NAME: WS14-033B-BK 16W 27K	TYPE:	WEIGHT:
SPEC.:	DIM.:	SERIAL No.: 1
MFR.: EVERFINE	SUR.:	Shielding Angle:

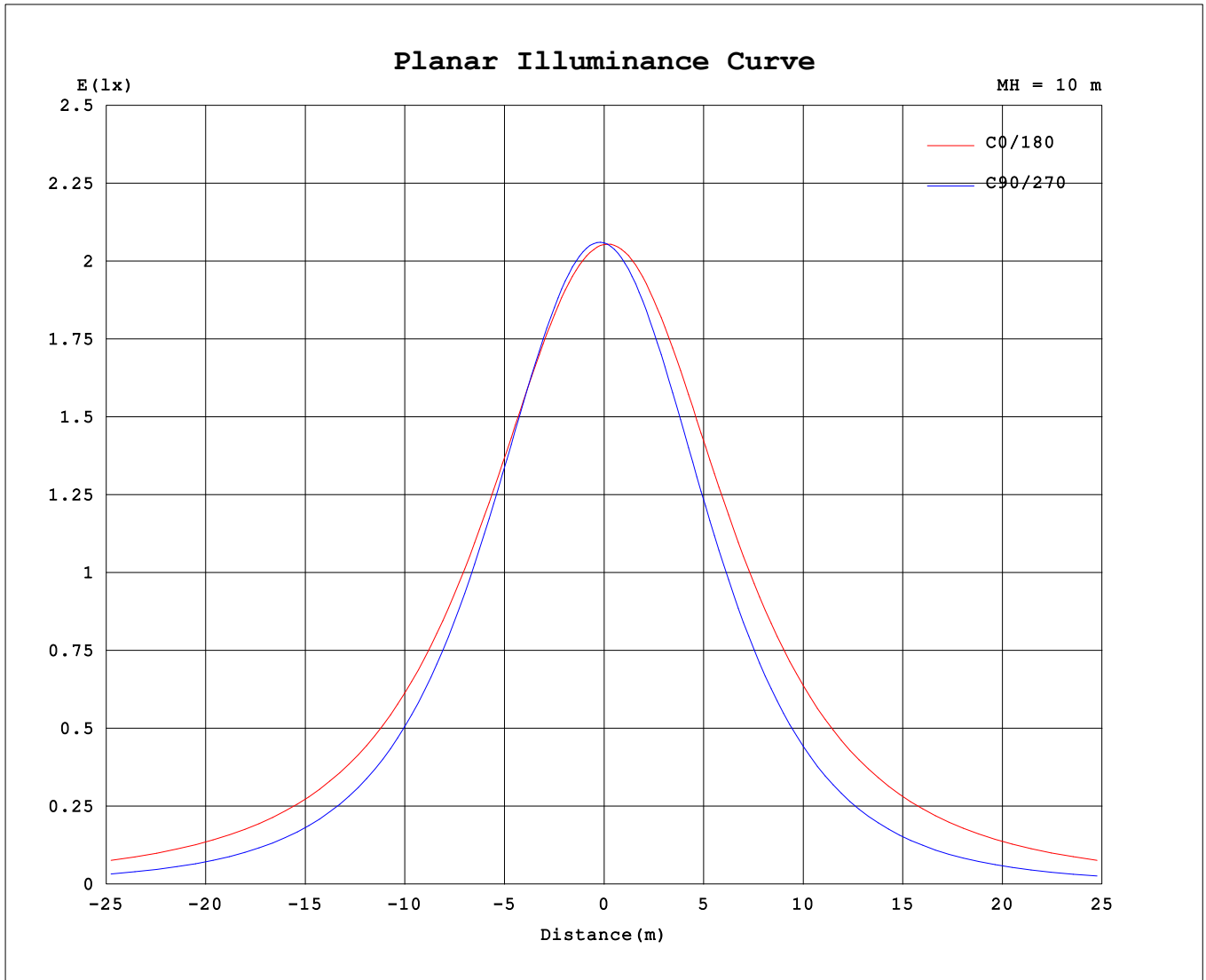
AvgL	cd/m2
L_0~180 (65) av	3569
L_0~180 (75) av	5261
L_0~180 (85) av	13756
L_90~270 (65) av	1607
L_90~270 (75) av	1309
L_90~270 (85) av	984
L_45 (65) av	2344
L_45 (75) av	2787
L_45 (85) av	5748

Standard: GB/T 29293-2012

C Range: 0 - 360DEG  
 C Interval: 90.0DEG  
 Test Speed: HIGH  
 Temperature:25.3℃  
 Operators:DAMIN  
 Test Date:10 February 2026

γ Range: 0 - 180DEG  
 γ Interval: 1.0DEG  
 Test System:EVERFINE GO-2000B\_V1 SYSTEM V2.00.459  
 Humidity:65.0%  
 Test Distance:7.380m [K=1.0000]  
 Remarks:

Planar Illuminance Curve



C Range: 0 - 360DEG  
 C Interval: 90.0DEG  
 Test Speed: HIGH  
 Temperature: 25.3 °C  
 Operators: DAMIN  
 Test Date: 10 February 2026

γ Range: 0 - 180DEG  
 γ Interval: 1.0DEG  
 Test System: EVERFINE GO-2000B\_V1 SYSTEM V2.00.459  
 Humidity: 65.0%  
 Test Distance: 7.380m [K=1.0000]  
 Remarks:

LUMINOUS DISTRIBUTION INTENSITY DATA

Test:U:120.14V I:0.1442A P:16.241W PF:0.9374 Freq:59.98Hz Lamp Flux:965.204x1 lm		
NAME: WS14-033B-BK 16W 27K	TYPE:	WEIGHT:
SPEC.:	DIM.:	SERIAL No.: 1
MFR.: EVERFINE	SUR.:	Shielding Angle:

Table--1

UNIT: cd

C (DEG) \ γ (DEG)	0	90	180	270															
0	205	206	205	206															
5	204	207	206	203															
10	202	205	206	199															
15	200	202	205	193															
20	196	197	203	185															
25	193	190	200	176															
30	189	181	196	165															
35	184	170	192	153															
40	179	157	186	140															
45	174	143	181	125															
50	168	128	174	110															
55	162	111	167	93.9															
60	156	93.5	159	77.3															
65	150	75.1	152	60.7															
70	144	56.7	143	44.3															
75	138	38.9	135	28.9															
80	131	22.9	126	15.5															
85	123	10.4	116	6.71															
90	114	5.83	106	4.05															
95	104	5.60	91.8	4.36															
100	74.6	6.27	50.5	4.14															
105	56.3	6.91	47.8	4.14															
110	71.7	7.63	62.4	4.64															
115	66.2	8.40	56.0	5.37															
120	60.1	9.28	49.9	5.72															
125	53.7	10.2	44.0	5.53															
130	47.7	11.0	38.7	4.59															
135	42.0	11.9	33.8	4.16															
140	36.9	12.8	29.5	5.24															
145	31.5	13.4	22.6	4.97															
150	14.3	14.1	11.8	4.29															
155	13.1	14.7	11.1	4.34															
160	12.3	14.1	10.6	4.43															
165	13.6	12.8	11.8	4.53															
170	12.6	11.7	11.0	5.70															
175	10.5	12.2	10.4	8.24															
180	11.1	11.0	11.1	11.1															

C Range: 0 - 360DEG  
 C Interval: 90.0DEG  
 Test Speed: HIGH  
 Temperature:25.3℃  
 Operators:DAMIN  
 Test Date:10 February 2026

γ Range: 0 - 180DEG  
 γ Interval: 1.0DEG  
 Test System:EVERFINE GO-2000B\_V1 SYSTEM V2.00.459  
 Humidity:65.0%  
 Test Distance:7.380m [K=1.0000]  
 Remarks: