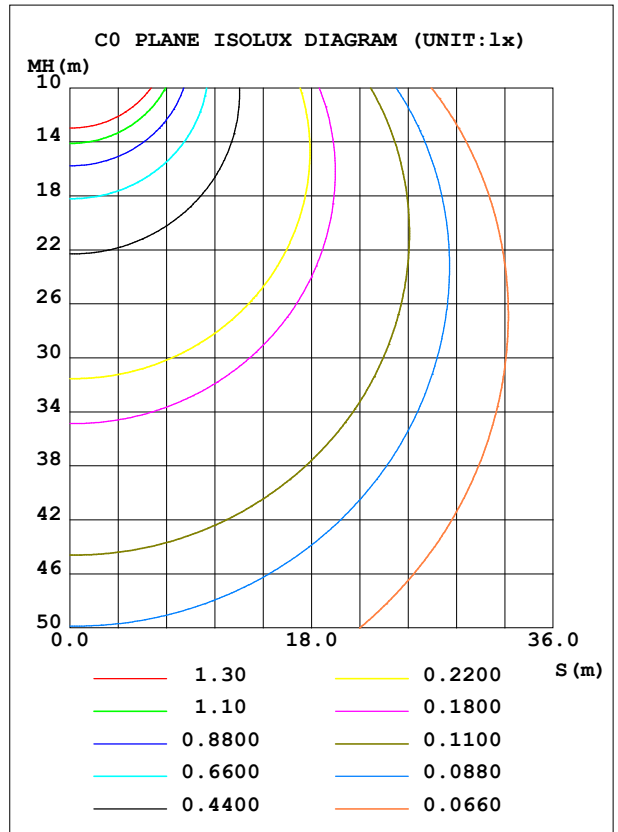
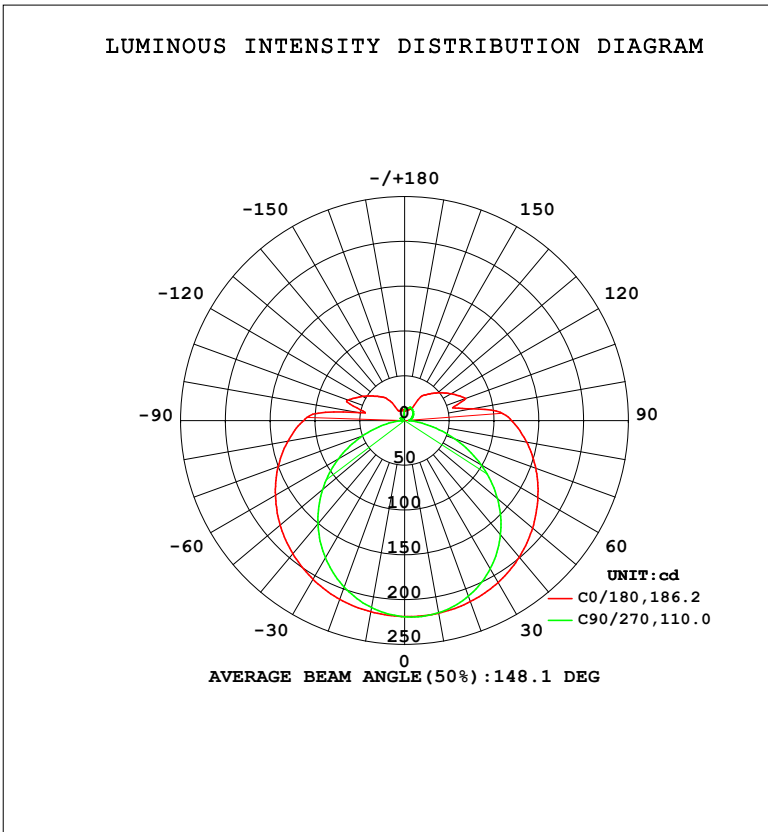


LUMINAIRE PHOTOMETRIC TEST REPORT

| | | |
|---|-------|------------------|
| Test:U:120.05V I:0.1439A P:16.196W PF:0.9373 Freq:59.98Hz Lamp Flux:1027.77x1 lm | | |
| NAME: WS14-033B-金色 16W 27K | TYPE: | WEIGHT: |
| SPEC.: | DIM.: | SERIAL No.: 1 |
| MFR.: EVERFINE | SUR.: | Shielding Angle: |

| DATA OF LAMP | | PHOTOMETRIC DATA | | | | Eff: 63.46 lm/W |
|-------------------|---------|-----------------------|---------|---------------------|------------|-----------------|
| MODEL | 2700K | I _{max} (cd) | 219.6 | S/MH (C0/180) | 1.41 | |
| NOMINAL POWER (W) | 16 | LOR (%) | 100.0 | S/MH (C90/270) | 1.21 | |
| RATED VOLTAGE (V) | 120 | TOTAL FLUX (lm) | 1027.8 | η UP, DN (C0-180) | 10.4, 41.8 | |
| NOMINAL FLUX (lm) | 1027.77 | CIE CLASS | SEMI-D. | η UP, DN (C180-360) | 8.4, 39.4 | |
| LAMPS INSIDE | 1 | η up (%) | 18.7 | CIBSE SHR NOM | 1.50 | |
| TEST VOLTAGE (V) | 120 | η down (%) | 81.3 | CIBSE SHR MAX | 1.50 | |



C Range: 0 - 360DEG
 C Interval: 90.0DEG
 Test Speed: HIGH
 Temperature: 25.3 °C
 Operators: DAMIN
 Test Date: 04 February 2026

γ Range: 0 - 180DEG
 γ Interval: 1.0DEG
 Test System: EVERFINE GO-2000B_V1 SYSTEM V2.00.459
 Humidity: 65.0%
 Test Distance: 7.380m [K=1.0000]
 Remarks:

ZONAL FLUX DIAGRAM

ZONAL FLUX DIAGRAM:

| γ | C0 | C90 | C180 | C270 | | | | γ | Φ zone | Φ total | %lum,lamp |
|----------|-----------------------|-------|-------|-------|--|--|--|----------|-------------|--------------|-----------|
| 10 | 218.4 | 217.9 | 216.7 | 212.1 | | | | 0- 10 | 20.77 | 20.77 | 2.02,2.02 |
| 20 | 215.1 | 208.6 | 212.2 | 197.7 | | | | 10- 20 | 60.20 | 80.97 | 7.88,7.88 |
| 30 | 208.8 | 191.3 | 204.6 | 177.0 | | | | 20- 30 | 93.46 | 174.4 | 17,17 |
| 40 | 199.1 | 166.5 | 194.2 | 150.5 | | | | 30- 40 | 117.2 | 291.6 | 28.4,28.4 |
| 50 | 186.6 | 135.3 | 181.4 | 119.6 | | | | 40- 50 | 129.1 | 420.7 | 40.9,40.9 |
| 60 | 171.9 | 98.67 | 166.6 | 85.27 | | | | 50- 60 | 128.4 | 549.1 | 53.4,53.4 |
| 70 | 155.9 | 59.25 | 150.3 | 50.00 | | | | 60- 70 | 116.3 | 665.3 | 64.7,64.7 |
| 80 | 138.3 | 23.13 | 132.3 | 18.19 | | | | 70- 80 | 95.78 | 761.1 | 74.1,74.1 |
| 90 | 119.4 | 5.365 | 112.9 | 3.721 | | | | 80- 90 | 74.20 | 835.3 | 81.3,81.3 |
| 100 | 76.24 | 6.143 | 51.53 | 3.357 | | | | 90-100 | 55.51 | 890.8 | 86.7,86.7 |
| 110 | 72.87 | 8.289 | 67.22 | 4.334 | | | | 100-110 | 34.82 | 925.6 | 90.1,90.1 |
| 120 | 60.07 | 10.36 | 54.33 | 5.559 | | | | 110-120 | 35.15 | 960.8 | 93.5,93.5 |
| 130 | 48.41 | 12.38 | 42.62 | 4.179 | | | | 120-130 | 26.73 | 987.5 | 96.1,96.1 |
| 140 | 38.11 | 14.24 | 33.12 | 4.840 | | | | 130-140 | 19.13 | 1007 | 97.9,97.9 |
| 150 | 15.72 | 15.74 | 13.15 | 3.910 | | | | 140-150 | 11.42 | 1018 | 99.1,99.1 |
| 160 | 13.36 | 15.72 | 12.06 | 4.060 | | | | 150-160 | 5.447 | 1023 | 99.6,99.6 |
| 170 | 13.77 | 13.38 | 12.17 | 5.535 | | | | 160-170 | 3.217 | 1027 | 99.9,99.9 |
| 180 | 12.26 | 12.15 | 12.29 | 12.14 | | | | 170-180 | 1.071 | 1028 | 100,100 |
| DEG | LUMINOUS INTENSITY:cd | | | | | | | | UNIT:lm | | |

Conical surface Flux(90deg): 355.42 lm

%lum = 34.6%

%lamp = 34.6%

Conical surface Flux(120deg): 549.06 lm

%lum = 53.4%

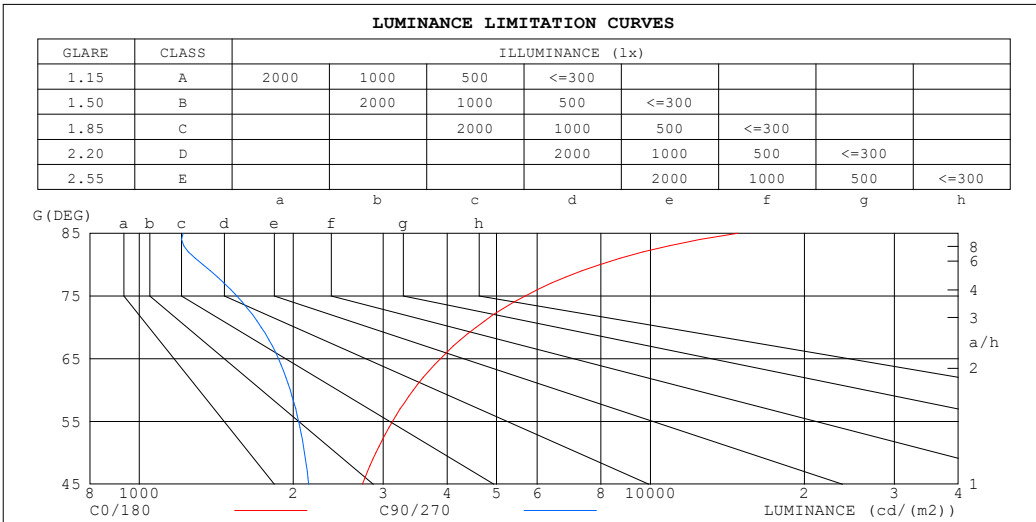
%lamp = 53.4%

C Range: 0 - 360DEG
 C Interval: 90.0DEG
 Test Speed: HIGH
 Temperature:25.3°C
 Operators:DAMIN
 Test Date:04 February 2026

γ Range: 0 - 180DEG
 γ Interval: 1.0DEG
 Test System:EVERFINE GO-2000B_V1 SYSTEM V2.00.459
 Humidity:65.0%
 Test Distance:7.380m [K=1.0000]
 Remarks:

LUMINANCE LIMITATION CURVES

| | | |
|---|-------|------------------|
| Test:U:120.05V I:0.1439A P:16.196W PF:0.9373 Freq:59.98Hz Lamp Flux:1027.77x1 lm | | |
| NAME: WS14-033B-金色 16W 27K | TYPE: | WEIGHT: |
| SPEC.: | DIM.: | SERIAL No.: 1 |
| MFR.: EVERFINE | SUR.: | Shielding Angle: |



| LUMINANCE cd/(m2) | | |
|-------------------|--------|---------|
| G (DEG) | C0/180 | C90/270 |
| 85 | 14820 | 1218 |
| 80 | 7965 | 1332 |
| 75 | 5688 | 1551 |
| 70 | 4559 | 1732 |
| 65 | 3881 | 1871 |
| 60 | 3437 | 1973 |
| 55 | 3128 | 2049 |
| 50 | 2903 | 2104 |
| 45 | 2732 | 2145 |

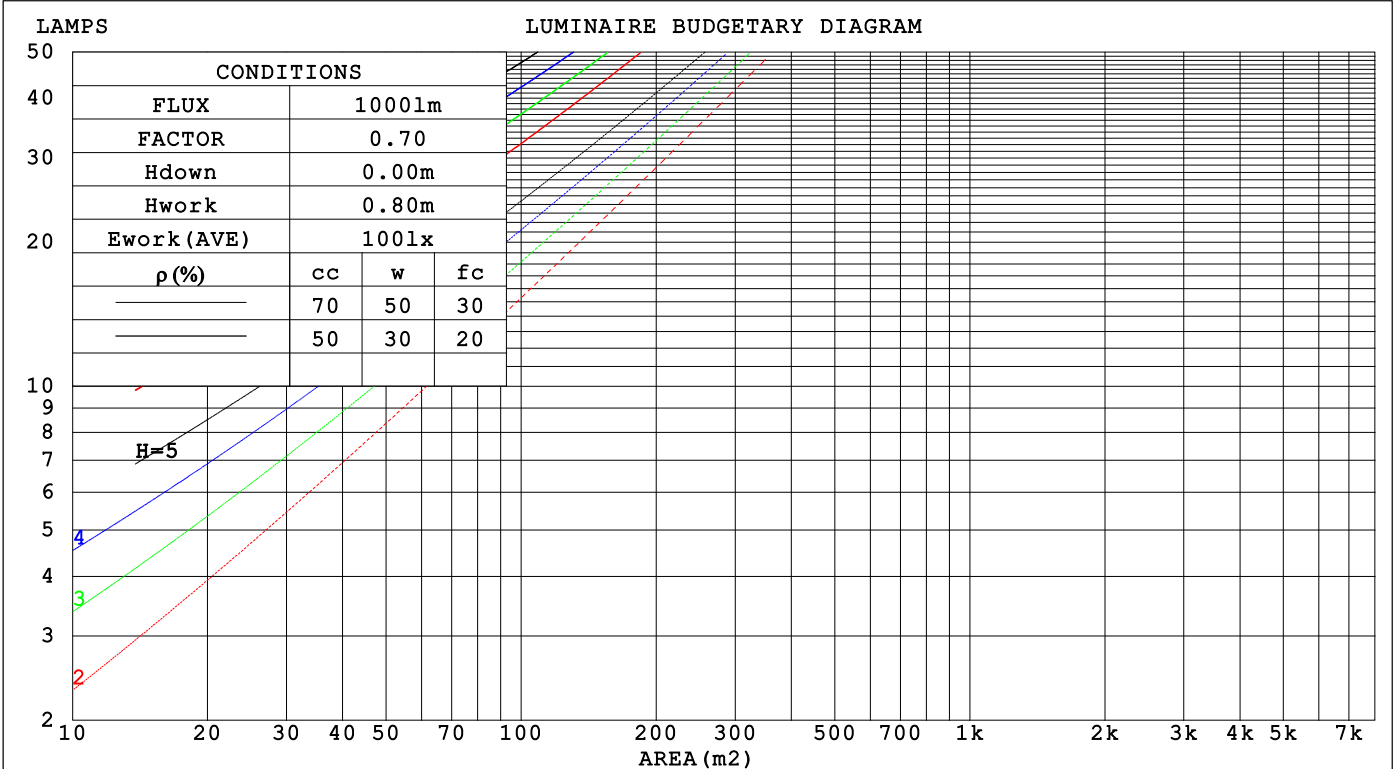
C Range: 0 - 360DEG
 C Interval: 90.0DEG
 Test Speed: HIGH
 Temperature: 25.3 °C
 Operators: DAMIN
 Test Date: 04 February 2026

γ Range: 0 - 180DEG
 γ Interval: 1.0DEG
 Test System: EVERFINE GO-2000B_V1 SYSTEM V2.00.459
 Humidity: 65.0%
 Test Distance: 7.380m [K=1.0000]
 Remarks:

CU AND LUMINAIRE BUDGETARY ESTIMATE DIAGRAM

| | | |
|---|-------|------------------|
| Test:U:120.05V I:0.1439A P:16.196W PF:0.9373 Freq:59.98Hz Lamp Flux:1027.77x1 lm | | |
| NAME: WS14-033B-金色 16W 27K | TYPE: | WEIGHT: |
| SPEC.: | DIM.: | SERIAL No.: 1 |
| MFR.: EVERFINE | SUR.: | Shielding Angle: |

| | | | | | | | | | | | | | | | | |
|------|-----------------------|------|------|------|------|------|---------------------------------|------|------|-----|-----|-----|-----|-----|-----|-----|
| pcc | 80% | | | 70% | | | 50% | | | 30% | | | 10% | | | 0 |
| pw | 50% | 30% | 10% | 50% | 30% | 10% | 50% | 30% | 10% | 50% | 30% | 10% | 50% | 30% | 10% | 0 |
| pfc | 20% | | | 20% | | | 20% | | | 20% | | | 20% | | | 0 |
| RCR | RCR:Room Cavity Ratio | | | | | | Coefficients of Utilization(CU) | | | | | | | | | |
| 0.0 | 1.15 | 1.15 | 1.15 | 1.10 | 1.10 | 1.10 | 1.01 | 1.01 | 1.01 | .92 | .92 | .92 | .85 | .85 | .85 | .81 |
| 1.0 | .96 | .90 | .86 | .91 | .87 | .82 | .84 | .80 | .76 | .77 | .73 | .71 | .70 | .68 | .65 | .62 |
| 2.0 | .82 | .74 | .67 | .78 | .71 | .65 | .72 | .66 | .61 | .65 | .61 | .57 | .60 | .56 | .53 | .49 |
| 3.0 | .71 | .62 | .55 | .68 | .60 | .53 | .62 | .55 | .50 | .57 | .51 | .46 | .52 | .47 | .43 | .40 |
| 4.0 | .62 | .53 | .46 | .60 | .51 | .44 | .55 | .47 | .42 | .50 | .44 | .39 | .46 | .41 | .37 | .34 |
| 5.0 | .55 | .46 | .39 | .53 | .44 | .38 | .49 | .41 | .35 | .45 | .38 | .33 | .41 | .36 | .31 | .29 |
| 6.0 | .49 | .40 | .33 | .47 | .39 | .32 | .44 | .36 | .31 | .40 | .34 | .29 | .37 | .32 | .27 | .25 |
| 7.0 | .45 | .36 | .29 | .43 | .34 | .28 | .40 | .32 | .27 | .37 | .30 | .25 | .34 | .28 | .24 | .22 |
| 8.0 | .40 | .32 | .26 | .39 | .31 | .25 | .36 | .29 | .24 | .33 | .27 | .23 | .31 | .25 | .21 | .19 |
| 9.0 | .37 | .29 | .23 | .36 | .28 | .22 | .33 | .26 | .21 | .31 | .25 | .20 | .28 | .23 | .19 | .17 |
| 10.0 | .34 | .26 | .21 | .33 | .25 | .20 | .31 | .24 | .19 | .28 | .22 | .18 | .26 | .21 | .17 | .15 |



C Range: 0 - 360DEG
 C Interval: 90.0DEG
 Test Speed: HIGH
 Temperature:25.3℃
 Operators:DAMIN
 Test Date:04 February 2026

γ Range: 0 - 180DEG
 γ Interval: 1.0DEG
 Test System:EVERFINE GO-2000B_V1 SYSTEM V2.00.459
 Humidity:65.0%
 Test Distance:7.380m [K=1.0000]
 Remarks:

WEC AND CCEC

| | | |
|---|-------|------------------|
| Test:U:120.05V I:0.1439A P:16.196W PF:0.9373 Freq:59.98Hz Lamp Flux:1027.77x1 lm | | |
| NAME: WS14-033B-金色 16W 27K | TYPE: | WEIGHT: |
| SPEC.: | DIM.: | SERIAL No.: 1 |
| MFR.: EVERFINE | SUR.: | Shielding Angle: |

| ρ_{CC} | 80% | | | 70% | | | 50% | | | 30% | | | 10% | | | 0 |
|-------------|-----------------------|------|------|------|------|------|---------------------------------|------|------|------|------|------|------|------|------|---|
| ρ_w | 50% | 30% | 10% | 50% | 30% | 10% | 50% | 30% | 10% | 50% | 30% | 10% | 50% | 30% | 10% | 0 |
| ρ_{fc} | 20% | | | 20% | | | 20% | | | 20% | | | 20% | | | 0 |
| RCR | RCR:Room Cavity Ratio | | | | | | Wall Exitance Coefficients(WEC) | | | | | | | | | |
| 0.0 | | | | | | | | | | | | | | | | |
| 1.0 | .382 | .217 | .069 | .369 | .211 | .067 | .345 | .198 | .063 | .323 | .186 | .060 | .302 | .175 | .056 | |
| 2.0 | .332 | .182 | .056 | .320 | .176 | .054 | .298 | .166 | .051 | .278 | .156 | .049 | .259 | .147 | .046 | |
| 3.0 | .295 | .157 | .047 | .284 | .152 | .046 | .265 | .143 | .044 | .246 | .135 | .041 | .229 | .127 | .039 | |
| 4.0 | .266 | .138 | .041 | .256 | .134 | .040 | .238 | .126 | .038 | .222 | .119 | .036 | .206 | .112 | .034 | |
| 5.0 | .242 | .123 | .036 | .233 | .120 | .035 | .217 | .113 | .033 | .201 | .106 | .032 | .187 | .100 | .030 | |
| 6.0 | .222 | .111 | .032 | .214 | .108 | .031 | .199 | .102 | .030 | .185 | .096 | .028 | .172 | .090 | .027 | |
| 7.0 | .204 | .101 | .029 | .197 | .098 | .028 | .184 | .093 | .027 | .171 | .088 | .025 | .159 | .082 | .024 | |
| 8.0 | .190 | .093 | .026 | .183 | .090 | .025 | .170 | .085 | .024 | .159 | .080 | .023 | .148 | .076 | .022 | |
| 9.0 | .177 | .085 | .024 | .171 | .083 | .023 | .159 | .079 | .022 | .148 | .074 | .021 | .138 | .070 | .020 | |
| 10.0 | .165 | .079 | .022 | .160 | .077 | .022 | .149 | .073 | .021 | .139 | .069 | .020 | .130 | .065 | .019 | |

| ρ_{CC} | 80% | | | 70% | | | 50% | | | 30% | | | 10% | | | 0 |
|-------------|-----------------------|------|------|------|------|------|--|------|------|------|------|------|------|------|------|---|
| ρ_w | 50% | 30% | 10% | 50% | 30% | 10% | 50% | 30% | 10% | 50% | 30% | 10% | 50% | 30% | 10% | 0 |
| ρ_{fc} | 20% | | | 20% | | | 20% | | | 20% | | | 20% | | | 0 |
| RCR | RCR:Room Cavity Ratio | | | | | | Ceiling Cavity Exitance Coefficients(CCEC) | | | | | | | | | |
| 0.0 | .333 | .333 | .333 | .285 | .285 | .285 | .194 | .194 | .194 | .112 | .112 | .112 | .036 | .036 | .036 | |
| 1.0 | .329 | .299 | .273 | .282 | .257 | .235 | .193 | .177 | .162 | .111 | .102 | .094 | .036 | .033 | .031 | |
| 2.0 | .322 | .277 | .238 | .276 | .238 | .206 | .189 | .165 | .144 | .109 | .096 | .084 | .035 | .031 | .027 | |
| 3.0 | .315 | .260 | .216 | .270 | .224 | .188 | .185 | .156 | .132 | .107 | .091 | .078 | .034 | .030 | .025 | |
| 4.0 | .307 | .248 | .202 | .264 | .214 | .176 | .181 | .149 | .124 | .105 | .087 | .073 | .034 | .028 | .024 | |
| 5.0 | .300 | .238 | .192 | .257 | .206 | .167 | .177 | .144 | .118 | .103 | .084 | .070 | .033 | .028 | .023 | |
| 6.0 | .292 | .230 | .185 | .251 | .199 | .161 | .173 | .139 | .114 | .101 | .082 | .068 | .032 | .027 | .022 | |
| 7.0 | .285 | .223 | .180 | .245 | .194 | .157 | .169 | .136 | .111 | .098 | .080 | .066 | .032 | .026 | .022 | |
| 8.0 | .278 | .218 | .176 | .240 | .189 | .154 | .166 | .133 | .109 | .096 | .078 | .065 | .031 | .026 | .021 | |
| 9.0 | .272 | .213 | .173 | .234 | .185 | .151 | .162 | .130 | .107 | .095 | .077 | .064 | .031 | .025 | .021 | |
| 10.0 | .266 | .209 | .171 | .230 | .181 | .149 | .159 | .128 | .106 | .093 | .075 | .063 | .030 | .025 | .021 | |

| | |
|----------------------------|---|
| C Range: 0 - 360DEG | γ Range: 0 - 180DEG |
| C Interval: 90.0DEG | γ Interval: 1.0DEG |
| Test Speed: HIGH | Test System:EVERFINE GO-2000B_V1 SYSTEM V2.00.459 |
| Temperature:25.3℃ | Humidity:65.0% |
| Operators:DAMIN | Test Distance:7.380m [K=1.0000] |
| Test Date:04 February 2026 | Remarks: |

UGR(Unified Glare Rating) Table

| | | | | | | | | | | |
|---|------------------|------|------|------|-------|----------------|------|------------------|------|------|
| Test:U:120.05V I:0.1439A P:16.196W PF:0.9373 Freq:59.98Hz | | | | | | | | | | |
| Lamp Flux:1027.77x1 lm | | | | | | | | | | |
| NAME: WS14-033B-金色 16W 27K | | | | | TYPE: | | | WEIGHT: | | |
| SPEC.: | | | | | DIM.: | | | SERIAL No.: 1 | | |
| MFR.: EVERFINE | | | | | SUR.: | | | Shielding Angle: | | |
| ceiling/cavity | 0.7 | 0.7 | 0.5 | 0.5 | 0.3 | 0.7 | 0.7 | 0.5 | 0.5 | 0.3 |
| walls | 0.5 | 0.3 | 0.5 | 0.3 | 0.3 | 0.5 | 0.3 | 0.5 | 0.3 | 0.3 |
| working plane | 0.2 | 0.2 | 0.2 | 0.2 | 0.2 | 0.2 | 0.2 | 0.2 | 0.2 | 0.2 |
| Room dimensions | Viewed crosswise | | | | | Viewed endwise | | | | |
| x = 2H y = 2H | 16.0 | 17.4 | 16.5 | 17.9 | 18.5 | 14.1 | 15.4 | 14.6 | 16.0 | 16.5 |
| 3H | 18.8 | 20.1 | 19.3 | 20.6 | 21.2 | 15.6 | 16.8 | 16.1 | 17.4 | 18.0 |
| 4H | 20.4 | 21.6 | 20.9 | 22.1 | 22.8 | 16.2 | 17.4 | 16.7 | 17.9 | 18.6 |
| 6H | 22.1 | 23.2 | 22.7 | 23.8 | 24.5 | 16.6 | 17.7 | 17.2 | 18.3 | 18.9 |
| 8H | 23.1 | 24.2 | 23.7 | 24.8 | 25.5 | 16.7 | 17.8 | 17.3 | 18.4 | 19.0 |
| 12H | 24.2 | 25.3 | 24.9 | 25.9 | 26.6 | 16.8 | 17.8 | 17.4 | 18.4 | 19.1 |
| 4H 2H | 16.5 | 17.7 | 17.1 | 18.3 | 18.9 | 15.1 | 16.3 | 15.7 | 16.9 | 17.5 |
| 3H | 19.5 | 20.6 | 20.1 | 21.2 | 21.9 | 16.9 | 18.0 | 17.5 | 18.6 | 19.3 |
| 4H | 21.2 | 22.2 | 21.9 | 22.8 | 23.5 | 17.7 | 18.7 | 18.3 | 19.3 | 20.0 |
| 6H | 23.2 | 24.1 | 23.9 | 24.7 | 25.5 | 18.3 | 19.2 | 19.0 | 19.8 | 20.6 |
| 8H | 24.3 | 25.1 | 25.0 | 25.8 | 26.6 | 18.5 | 19.3 | 19.2 | 20.0 | 20.8 |
| 12H | 25.6 | 26.3 | 26.3 | 27.0 | 27.8 | 18.7 | 19.4 | 19.4 | 20.1 | 20.9 |
| 8H 4H | 21.5 | 22.3 | 22.2 | 23.0 | 23.8 | 18.6 | 19.4 | 19.3 | 20.1 | 20.9 |
| 6H | 23.7 | 24.4 | 24.4 | 25.1 | 25.9 | 19.6 | 20.3 | 20.3 | 21.0 | 21.8 |
| 8H | 25.0 | 25.6 | 25.7 | 26.4 | 27.2 | 20.1 | 20.7 | 20.8 | 21.4 | 22.2 |
| 12H | 26.6 | 27.1 | 27.3 | 27.8 | 28.7 | 20.4 | 21.0 | 21.2 | 21.7 | 22.6 |
| 12H 4H | 21.5 | 22.3 | 22.2 | 22.9 | 23.7 | 19.0 | 19.7 | 19.6 | 20.4 | 21.2 |
| 6H | 23.8 | 24.4 | 24.5 | 25.1 | 26.0 | 20.1 | 20.8 | 20.9 | 21.5 | 22.3 |
| 8H | 25.2 | 25.7 | 25.9 | 26.5 | 27.3 | 20.8 | 21.3 | 21.5 | 22.0 | 22.9 |
| Variations with the observer position at spacings(CIE Pub.117): | | | | | | | | | | |
| S = 1.0H | + 0.1 / - 0.1 | | | | | + 0.1 / - 0.1 | | | | |
| 1.5H | + 0.2 / - 0.2 | | | | | + 0.2 / - 0.3 | | | | |
| 2.0H | + 0.2 / - 0.3 | | | | | + 0.2 / - 0.5 | | | | |

CIE Pub.117, 1028 lm Total Lamp Luminous Flux Correct (8log(F/F0) = 0.1)
 Area: 0.1 m2

| | |
|----------------------------|---|
| C Range: 0 - 360DEG | γ Range: 0 - 180DEG |
| C Interval: 90.0DEG | γ Interval: 1.0DEG |
| Test Speed: HIGH | Test System:EVERFINE GO-2000B_V1 SYSTEM V2.00.459 |
| Temperature:25.3℃ | Humidity:65.0% |
| Operators:DAMIN | Test Distance:7.380m [K=1.0000] |
| Test Date:04 February 2026 | Remarks: |

UTILIZATION FACTORS TABLE

| | | |
|---|-------|------------------|
| Test:U:120.05V I:0.1439A P:16.196W PF:0.9373 Freq:59.98Hz Lamp Flux:1027.77x1 lm | | |
| NAME: WS14-033B-金色 16W 27K | TYPE: | WEIGHT: |
| SPEC.: | DIM.: | SERIAL No.: 1 |
| MFR.: EVERFINE | SUR.: | Shielding Angle: |

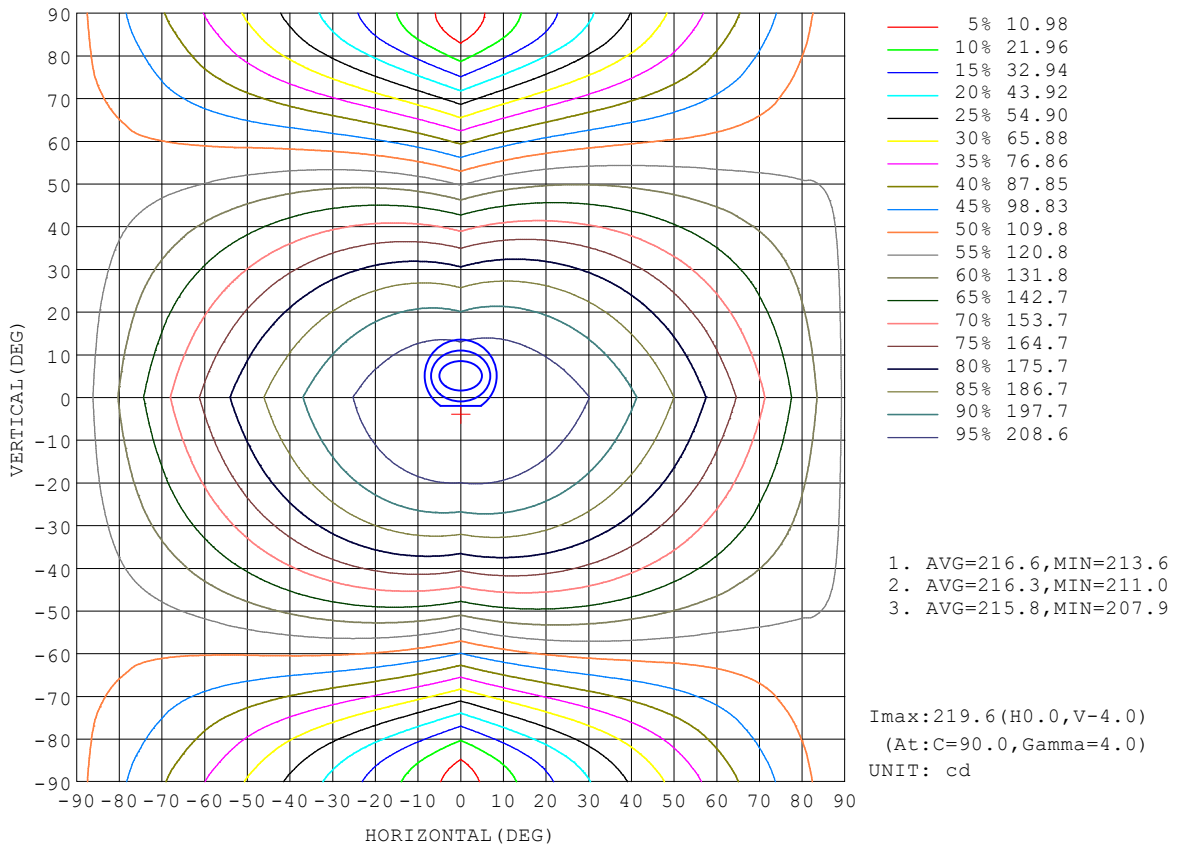
| REFLECTANCE | | | | | | | | | | |
|----------------------------------|--|-----|-----------|-----|-----|-----|---------------|-----|-----|--------|
| Ceiling | 0.8 | 0.8 | 0.8 | 0.7 | 0.7 | 0.7 | 0.5 | 0.5 | 0.5 | 0 |
| Walls | 0.7 | 0.5 | 0.3 | 0.7 | 0.5 | 0.3 | 0.7 | 0.5 | 0.3 | 0 |
| Working plane | 0.2 | 0.2 | 0.2 | 0.2 | 0.2 | 0.2 | 0.2 | 0.2 | 0.2 | 0 |
| ROOM INDEX | UTILIZATION FACTORS (PERCENT) $k(RI) \times RCR = 5$ | | | | | | | | | |
| k = 0.60 | 48 | 35 | 28 | 46 | 35 | 28 | 44 | 34 | 27 | 20 |
| 0.80 | 57 | 44 | 36 | 55 | 43 | 35 | 52 | 42 | 35 | 27 |
| 1.00 | 65 | 52 | 43 | 63 | 51 | 43 | 59 | 51 | 41 | 33 |
| 1.25 | 72 | 59 | 50 | 69 | 58 | 50 | 65 | 55 | 48 | 38 |
| 1.50 | 77 | 65 | 56 | 74 | 63 | 55 | 69 | 60 | 53 | 42 |
| 2.00 | 84 | 73 | 65 | 81 | 71 | 63 | 75 | 67 | 60 | 48 |
| 2.50 | 88 | 78 | 70 | 85 | 76 | 69 | 79 | 71 | 65 | 52 |
| 3.00 | 92 | 83 | 76 | 88 | 80 | 73 | 82 | 75 | 69 | 56 |
| 4.00 | 97 | 89 | 82 | 93 | 86 | 80 | 86 | 80 | 75 | 60 |
| 5.00 | 100 | 93 | 87 | 96 | 90 | 84 | 88 | 83 | 79 | 63 |
| ROOM INDEX | UF(total) | | | | | | | | | Direct |
| According to DIN EN 13032-2 2004 | | | Suspended | | | | SHRNOM = 1.25 | | | |

C Range: 0 - 360DEG
 C Interval: 90.0DEG
 Test Speed: HIGH
 Temperature: 25.3 °C
 Operators: DAMIN
 Test Date: 04 February 2026

γ Range: 0 - 180DEG
 γ Interval: 1.0DEG
 Test System: EVERFINE GO-2000B_V1 SYSTEM V2.00.459
 Humidity: 65.0%
 Test Distance: 7.380m [K=1.0000]
 Remarks:

ISOCANDELA DIAGRAM

| | | |
|---|-------|------------------|
| Test:U:120.05V I:0.1439A P:16.196W PF:0.9373 Freq:59.98Hz Lamp Flux:1027.77x1 lm | | |
| NAME: WS14-033B-金色 16W 27K | TYPE: | WEIGHT: |
| SPEC.: | DIM.: | SERIAL No.: 1 |
| MFR.: EVERFINE | SUR.: | Shielding Angle: |

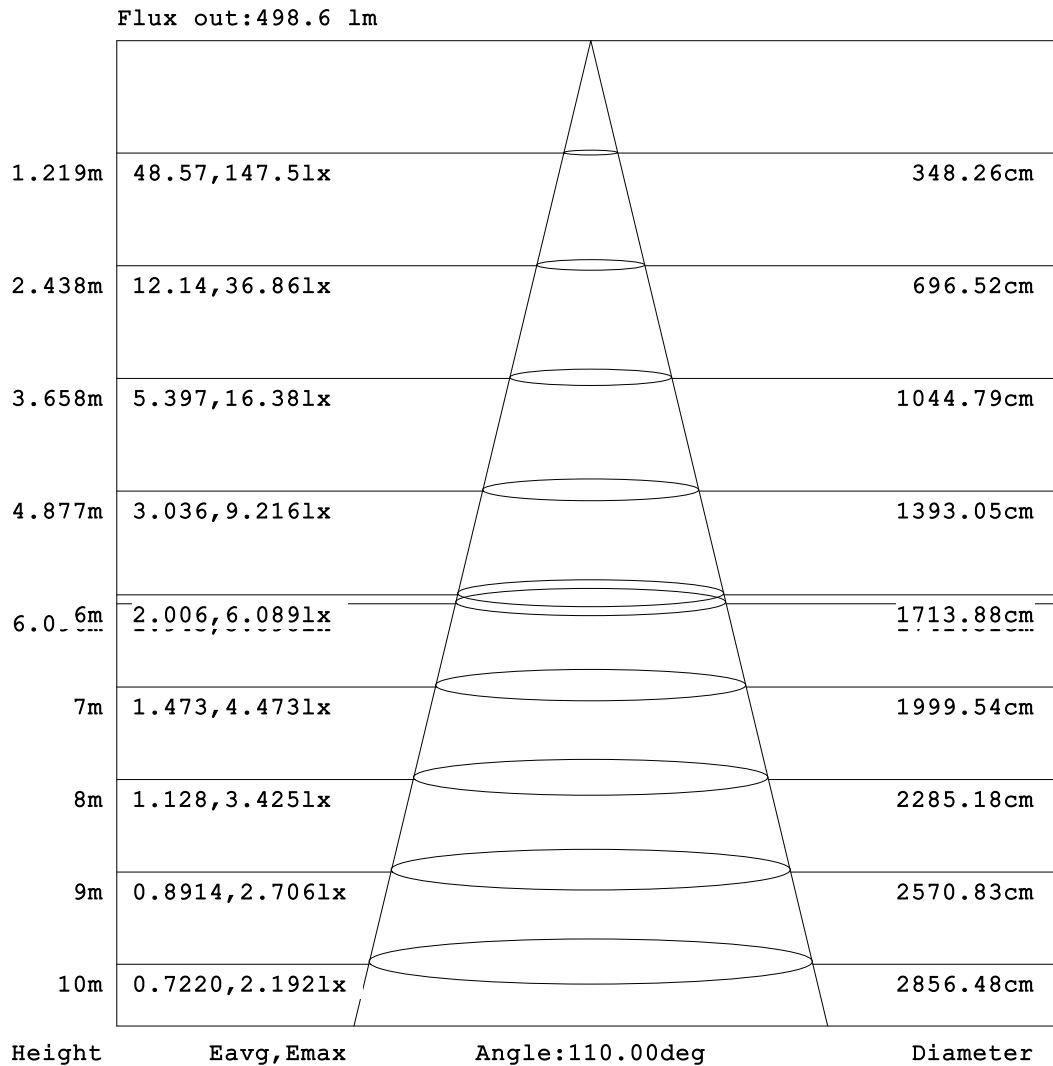


C Range: 0 - 360DEG
C Interval: 90.0DEG
Test Speed: HIGH
Temperature:25.3°C
Operators:DAMIN
Test Date:04 February 2026

γ Range: 0 - 180DEG
γ Interval: 1.0DEG
Test System:EVERFINE GO-2000B_V1 SYSTEM V2.00.459
Humidity:65.0%
Test Distance:7.380m [K=1.0000]
Remarks:

AAI Figure

| | | |
|---|-------|------------------|
| Test:U:120.05V I:0.1439A P:16.196W PF:0.9373 Freq:59.98Hz Lamp Flux:1027.77x1 lm | | |
| NAME: WS14-033B-金色 16W 27K | TYPE: | WEIGHT: |
| SPEC.: | DIM.: | SERIAL No.: 1 |
| MFR.: EVERFINE | SUR.: | Shielding Angle: |



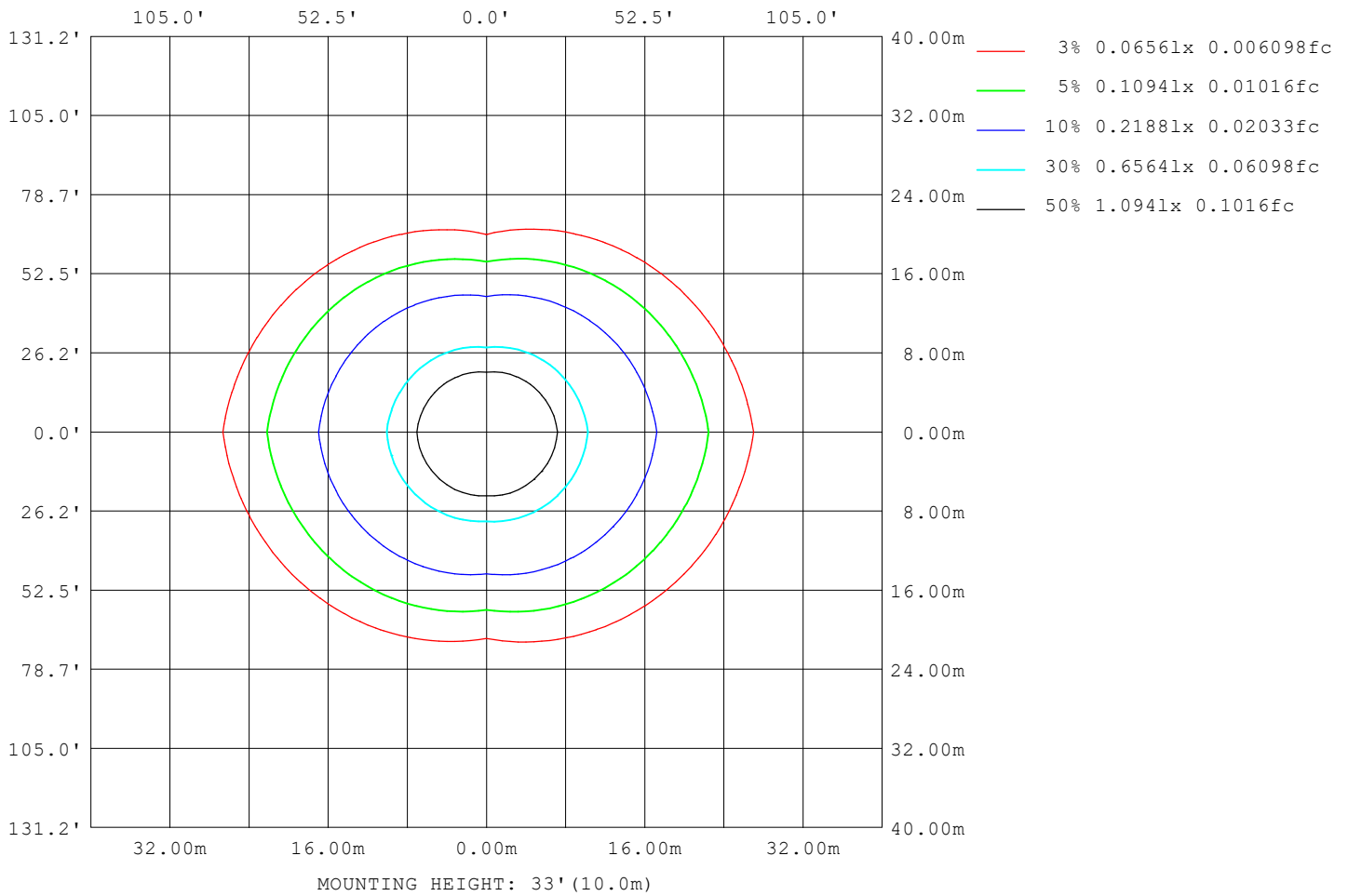
Note: The Curves indicate the illuminated area and the average illumination when the luminaire is at different distance.

C Range: 0 - 360DEG
 C Interval: 90.0DEG
 Test Speed: HIGH
 Temperature: 25.3 °C
 Operators: DAMIN
 Test Date: 04 February 2026

γ Range: 0 - 180DEG
 γ Interval: 1.0DEG
 Test System: EVERFINE GO-2000B_V1 SYSTEM V2.00.459
 Humidity: 65.0%
 Test Distance: 7.380m [K=1.0000]
 Remarks:

ISOLUX DIAGRAM

| | | |
|---|-------|------------------|
| Test:U:120.05V I:0.1439A P:16.196W PF:0.9373 Freq:59.98Hz Lamp Flux:1027.77x1 lm | | |
| NAME: WS14-033B-金色 16W 27K | TYPE: | WEIGHT: |
| SPEC.: | DIM.: | SERIAL No.: 1 |
| MFR.: EVERFINE | SUR.: | Shielding Angle: |



C Range: 0 - 360DEG
 C Interval: 90.0DEG
 Test Speed: HIGH
 Temperature:25.3℃
 Operators:DAMIN
 Test Date:04 February 2026

γ Range: 0 - 180DEG
 γ Interval: 1.0DEG
 Test System:EVERFINE GO-2000B_V1 SYSTEM V2.00.459
 Humidity:65.0%
 Test Distance:7.380m [K=1.0000]
 Remarks:

LED Avg.L Report

| | | |
|---|-------|------------------|
| Test:U:120.05V I:0.1439A P:16.196W PF:0.9373 Freq:59.98Hz Lamp Flux:1027.77x1 lm | | |
| NAME: WS14-033B-金色 16W 27K | TYPE: | WEIGHT: |
| SPEC.: | DIM.: | SERIAL No.: 1 |
| MFR.: EVERFINE | SUR.: | Shielding Angle: |

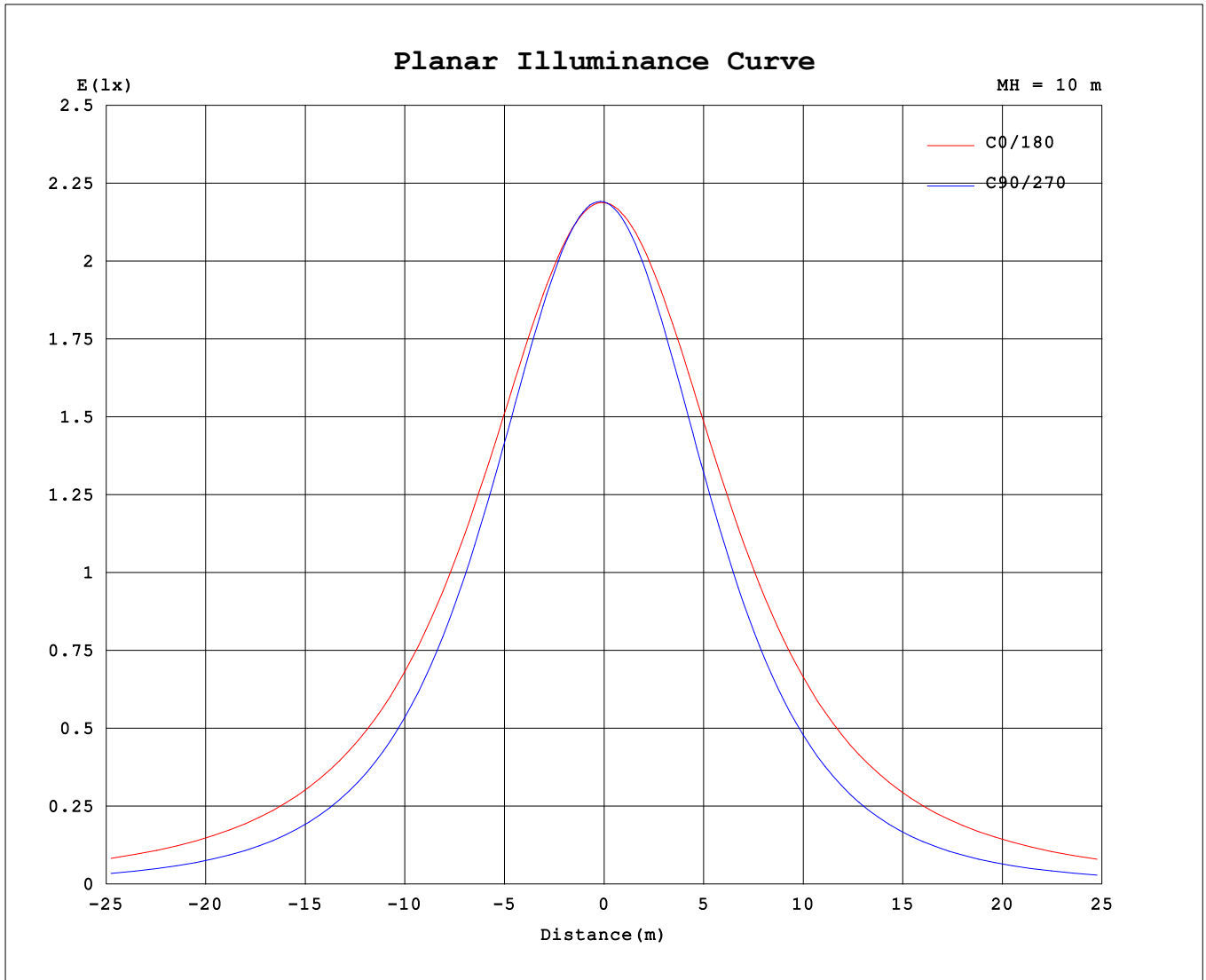
| AvgL | cd/m2 |
|------------------|-------|
| L_0~180 (65) av | 3818 |
| L_0~180 (75) av | 5577 |
| L_0~180 (85) av | 14467 |
| L_90~270 (65) av | 1735 |
| L_90~270 (75) av | 1416 |
| L_90~270 (85) av | 1014 |
| L_45 (65) av | 2512 |
| L_45 (75) av | 2970 |
| L_45 (85) av | 6037 |

Standard: GB/T 29293-2012

C Range: 0 - 360DEG
 C Interval: 90.0DEG
 Test Speed: HIGH
 Temperature:25.3℃
 Operators:DAMIN
 Test Date:04 February 2026

γ Range: 0 - 180DEG
 γ Interval: 1.0DEG
 Test System:EVERFINE GO-2000B_V1 SYSTEM V2.00.459
 Humidity:65.0%
 Test Distance:7.380m [K=1.0000]
 Remarks:

Planar Illuminance Curve



C Range: 0 - 360DEG
 C Interval: 90.0DEG
 Test Speed: HIGH
 Temperature: 25.3 °C
 Operators: DAMIN
 Test Date: 04 February 2026

γ Range: 0 - 180DEG
 γ Interval: 1.0DEG
 Test System: EVERFINE GO-2000B_V1 SYSTEM V2.00.459
 Humidity: 65.0%
 Test Distance: 7.380m [K=1.0000]
 Remarks:

LUMINOUS DISTRIBUTION INTENSITY DATA

| | | |
|---|-------|------------------|
| Test:U:120.05V I:0.1439A P:16.196W PF:0.9373 Freq:59.98Hz Lamp Flux:1027.77x1 lm | | |
| NAME: WS14-033B-金色 16W 27K | TYPE: | WEIGHT: |
| SPEC.: | DIM.: | SERIAL No.: 1 |
| MFR.: EVERFINE | SUR.: | Shielding Angle: |

Table--1

UNIT: cd

| C (DEG) \ γ (DEG) | 0 | 90 | 180 | 270 | | | | | | | | | | | | | | | |
|-------------------|------|------|------|------|--|--|--|--|--|--|--|--|--|--|--|--|--|--|--|
| 0 | 219 | 219 | 219 | 219 | | | | | | | | | | | | | | | |
| 5 | 219 | 219 | 218 | 217 | | | | | | | | | | | | | | | |
| 10 | 218 | 218 | 217 | 212 | | | | | | | | | | | | | | | |
| 15 | 217 | 214 | 215 | 206 | | | | | | | | | | | | | | | |
| 20 | 215 | 209 | 212 | 198 | | | | | | | | | | | | | | | |
| 25 | 212 | 201 | 209 | 188 | | | | | | | | | | | | | | | |
| 30 | 209 | 191 | 205 | 177 | | | | | | | | | | | | | | | |
| 35 | 204 | 180 | 200 | 164 | | | | | | | | | | | | | | | |
| 40 | 199 | 167 | 194 | 151 | | | | | | | | | | | | | | | |
| 45 | 193 | 152 | 188 | 136 | | | | | | | | | | | | | | | |
| 50 | 187 | 135 | 181 | 120 | | | | | | | | | | | | | | | |
| 55 | 179 | 118 | 174 | 103 | | | | | | | | | | | | | | | |
| 60 | 172 | 98.7 | 167 | 85.3 | | | | | | | | | | | | | | | |
| 65 | 164 | 79.1 | 159 | 67.6 | | | | | | | | | | | | | | | |
| 70 | 156 | 59.2 | 150 | 50.0 | | | | | | | | | | | | | | | |
| 75 | 147 | 40.1 | 141 | 33.2 | | | | | | | | | | | | | | | |
| 80 | 138 | 23.1 | 132 | 18.2 | | | | | | | | | | | | | | | |
| 85 | 129 | 10.6 | 123 | 7.05 | | | | | | | | | | | | | | | |
| 90 | 119 | 5.37 | 113 | 3.72 | | | | | | | | | | | | | | | |
| 95 | 107 | 5.26 | 96.8 | 3.40 | | | | | | | | | | | | | | | |
| 100 | 76.2 | 6.14 | 51.5 | 3.36 | | | | | | | | | | | | | | | |
| 105 | 55.8 | 7.19 | 55.3 | 3.75 | | | | | | | | | | | | | | | |
| 110 | 72.9 | 8.29 | 67.2 | 4.33 | | | | | | | | | | | | | | | |
| 115 | 66.4 | 9.23 | 60.6 | 5.22 | | | | | | | | | | | | | | | |
| 120 | 60.1 | 10.4 | 54.3 | 5.56 | | | | | | | | | | | | | | | |
| 125 | 54.1 | 11.4 | 48.1 | 5.44 | | | | | | | | | | | | | | | |
| 130 | 48.4 | 12.4 | 42.6 | 4.18 | | | | | | | | | | | | | | | |
| 135 | 43.0 | 13.4 | 37.9 | 3.78 | | | | | | | | | | | | | | | |
| 140 | 38.1 | 14.2 | 33.1 | 4.84 | | | | | | | | | | | | | | | |
| 145 | 33.6 | 15.0 | 24.5 | 4.68 | | | | | | | | | | | | | | | |
| 150 | 15.7 | 15.7 | 13.1 | 3.91 | | | | | | | | | | | | | | | |
| 155 | 14.1 | 16.4 | 12.5 | 3.96 | | | | | | | | | | | | | | | |
| 160 | 13.4 | 15.7 | 12.1 | 4.06 | | | | | | | | | | | | | | | |
| 165 | 14.5 | 14.3 | 13.4 | 4.18 | | | | | | | | | | | | | | | |
| 170 | 13.8 | 13.4 | 12.2 | 5.53 | | | | | | | | | | | | | | | |
| 175 | 11.0 | 13.9 | 11.7 | 8.88 | | | | | | | | | | | | | | | |
| 180 | 12.3 | 12.1 | 12.3 | 12.1 | | | | | | | | | | | | | | | |

C Range: 0 - 360DEG
 C Interval: 90.0DEG
 Test Speed: HIGH
 Temperature:25.3℃
 Operators:DAMIN
 Test Date:04 February 2026

γ Range: 0 - 180DEG
 γ Interval: 1.0DEG
 Test System:EVERFINE GO-2000B_V1 SYSTEM V2.00.459
 Humidity:65.0%
 Test Distance:7.380m [K=1.0000]
 Remarks: