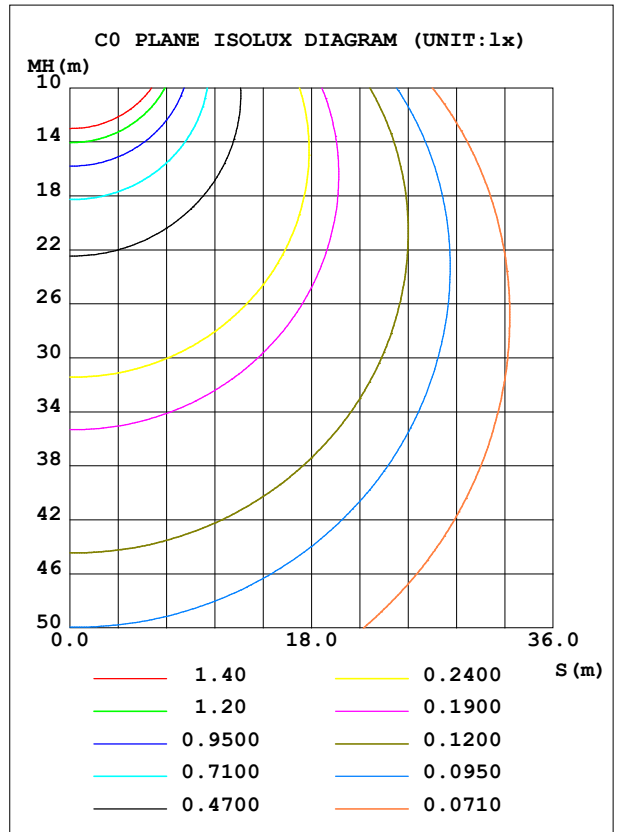
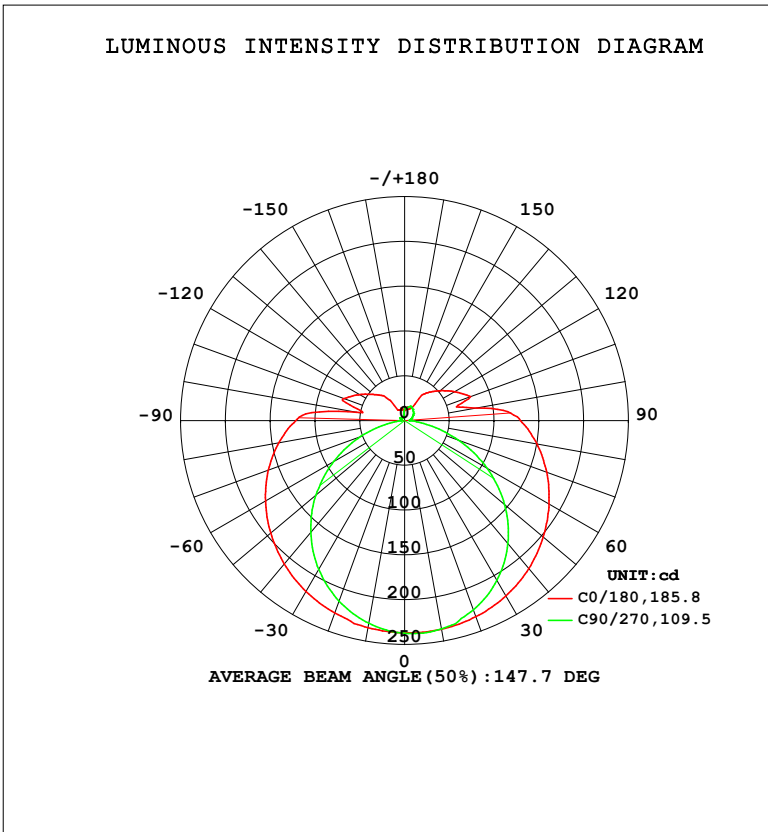


LUMINAIRE PHOTOMETRIC TEST REPORT

Test:U:120.05V I:0.1448A P:16.320W PF:0.9388 Freq:59.98Hz Lamp Flux:1107.96x1 lm		
NAME: WS14-033B-金色 16W 30K	TYPE:	WEIGHT:
SPEC.:	DIM.:	SERIAL No.: 1
MFR.: EVERFINE	SUR.:	Shielding Angle:

DATA OF LAMP		PHOTOMETRIC DATA				Eff: 67.89 lm/W
MODEL	3000K	I _{max} (cd)	238.1	S/MH (C0/180)	1.40	
NOMINAL POWER (W)	16	LOR (%)	100.0	S/MH (C90/270)	1.21	
RATED VOLTAGE (V)	120	TOTAL FLUX (lm)	1108.0	η UP, DN (C0-180)	10.3, 42.0	
NOMINAL FLUX (lm)	1107.96	CIE CLASS	SEMI-D.	η UP, DN (C180-360)	8.3, 39.4	
LAMPS INSIDE	1	η up (%)	18.7	CIBSE SHR NOM	1.50	
TEST VOLTAGE (V)	120	η down (%)	81.3	CIBSE SHR MAX	1.50	



C Range: 0 - 360DEG
 C Interval: 90.0DEG
 Test Speed: HIGH
 Temperature: 25.3 °C
 Operators: DAMIN
 Test Date: 04 February 2026

γ Range: 0 - 180DEG
 γ Interval: 1.0DEG
 Test System: EVERFINE GO-2000B_V1 SYSTEM V2.00.459
 Humidity: 65.0%
 Test Distance: 7.380m [K=1.0000]
 Remarks:

ZONAL FLUX DIAGRAM

ZONAL FLUX DIAGRAM:

γ	C0	C90	C180	C270				γ	Φ zone	Φ total	%lum,lamp
10	236.5	236.3	234.8	229.9				0- 10	22.51	22.51	2.03,2.03
20	233.0	224.8	228.5	214.4				10- 20	65.12	87.63	7.91,7.91
30	226.3	206.2	220.2	191.9				20- 30	101.0	188.6	17,17
40	215.8	179.4	209.0	163.2				30- 40	126.6	315.2	28.4,28.4
50	202.1	145.8	195.3	129.5				40- 50	139.4	454.6	41,41
60	186.3	106.4	179.4	91.16				50- 60	138.5	593.1	53.5,53.5
70	169.1	63.94	162.0	52.13				60- 70	125.2	718.3	64.8,64.8
80	149.9	25.00	142.6	16.79				70- 80	102.8	821.1	74.1,74.1
90	129.4	5.875	121.6	4.801				80- 90	80.01	901.1	81.3,81.3
100	82.01	6.611	54.97	3.639				90-100	59.87	961.0	86.7,86.7
110	78.38	8.881	72.08	4.666				100-110	37.33	998.3	90.1,90.1
120	64.73	11.07	58.25	5.969				110-120	37.74	1036	93.5,93.5
130	52.17	13.22	45.71	4.561				120-130	28.72	1065	96.1,96.1
140	41.03	15.21	35.52	5.150				130-140	20.55	1085	98,98
150	16.75	16.84	13.98	4.208				140-150	12.24	1098	99.1,99.1
160	14.23	16.85	12.85	4.366				150-160	5.816	1103	99.6,99.6
170	14.75	14.30	13.00	5.921				160-170	3.440	1107	99.9,99.9
180	13.11	13.00	13.12	13.00				170-180	1.144	1108	100,100
DEG	LUMINOUS INTENSITY:cd								UNIT:lm		

Conical surface Flux(90deg): 384.11 lm

%lum = 34.7%

%lamp = 34.7%

Conical surface Flux(120deg): 593.06 lm

%lum = 53.5%

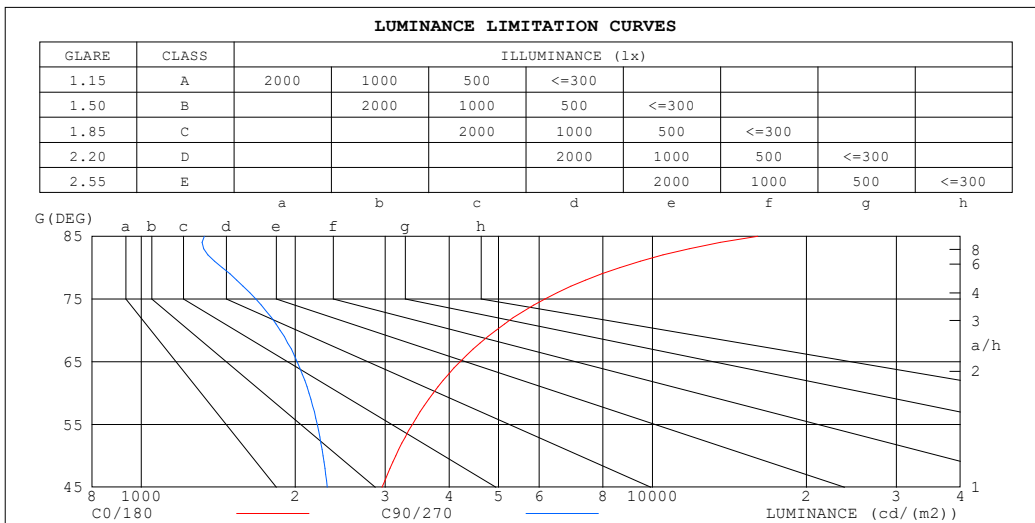
%lamp = 53.5%

C Range: 0 - 360DEG
 C Interval: 90.0DEG
 Test Speed: HIGH
 Temperature:25.3°C
 Operators:DAMIN
 Test Date:04 February 2026

γ Range: 0 - 180DEG
 γ Interval: 1.0DEG
 Test System:EVERFINE GO-2000B_V1 SYSTEM V2.00.459
 Humidity:65.0%
 Test Distance:7.380m [K=1.0000]
 Remarks:

LUMINANCE LIMITATION CURVES

Test:U:120.05V I:0.1448A P:16.320W PF:0.9388 Freq:59.98Hz Lamp Flux:1107.96x1 lm		
NAME: WS14-033B-金色 16W 30K	TYPE:	WEIGHT:
SPEC.:	DIM.:	SERIAL No.: 1
MFR.: EVERFINE	SUR.:	Shielding Angle:



LUMINANCE cd/(m2)		
G (DEG)	C0/180	C90/270
85	16069	1328
80	8634	1440
75	6164	1674
70	4943	1869
65	4204	2018
60	3726	2128
55	3391	2208
50	3144	2268
45	2958	2312

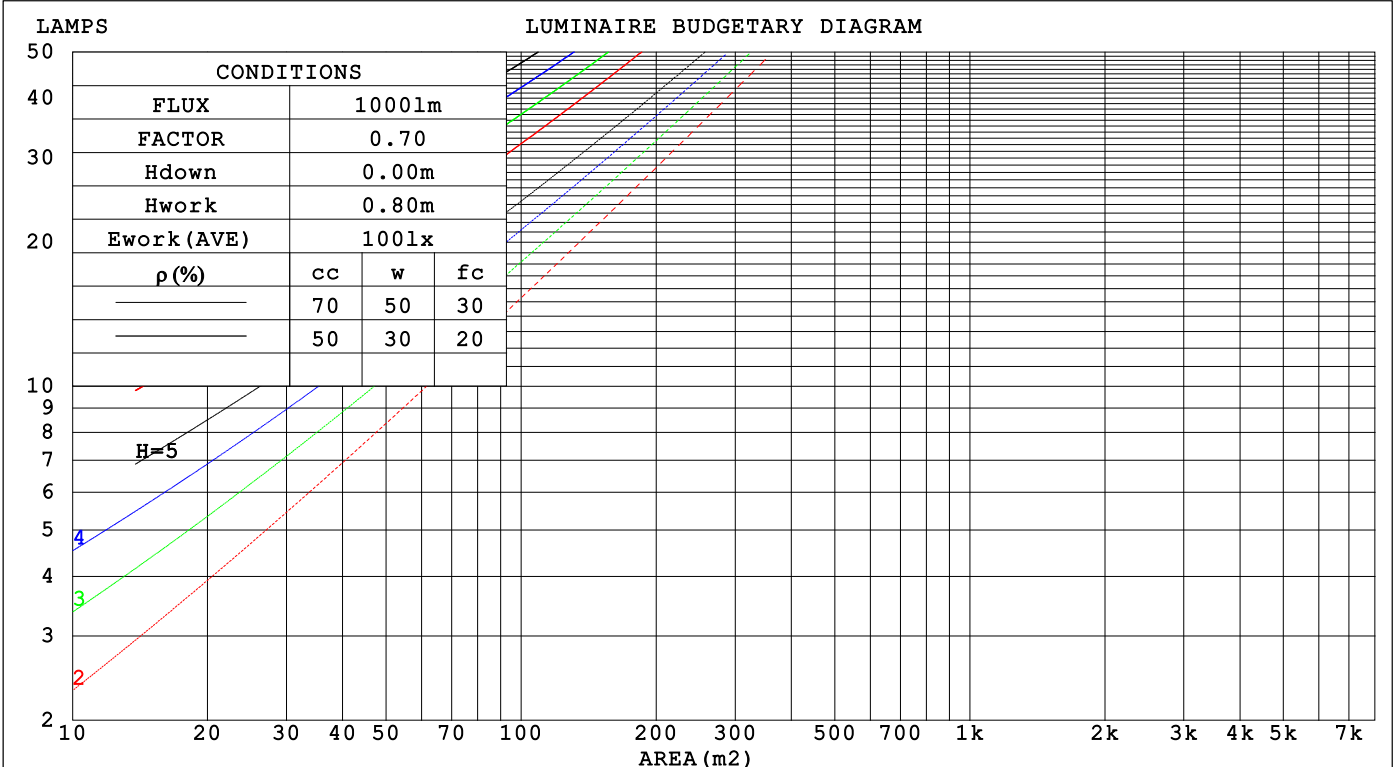
C Range: 0 - 360DEG
 C Interval: 90.0DEG
 Test Speed: HIGH
 Temperature:25.3℃
 Operators:DAMIN
 Test Date:04 February 2026

γ Range: 0 - 180DEG
 γ Interval: 1.0DEG
 Test System:EVERFINE GO-2000B_V1 SYSTEM V2.00.459
 Humidity:65.0%
 Test Distance:7.380m [K=1.0000]
 Remarks:

CU AND LUMINAIRE BUDGETARY ESTIMATE DIAGRAM

Test:U:120.05V I:0.1448A P:16.320W PF:0.9388 Freq:59.98Hz Lamp Flux:1107.96x1 lm		
NAME: WS14-033B-金色 16W 30K	TYPE:	WEIGHT:
SPEC.:	DIM.:	SERIAL No.: 1
MFR.: EVERFINE	SUR.:	Shielding Angle:

pcc	80%			70%			50%			30%			10%			0
pw	50%	30%	10%	50%	30%	10%	50%	30%	10%	50%	30%	10%	50%	30%	10%	0
pfc	20%			20%			20%			20%			20%			0
RCR	RCR:Room Cavity Ratio															
	Coefficients of Utilization(CU)															
0.0	1.15	1.15	1.15	1.10	1.10	1.10	1.01	1.01	1.01	.92	.92	.92	.85	.85	.85	.81
1.0	.96	.90	.86	.91	.87	.82	.84	.80	.76	.77	.74	.71	.70	.68	.65	.62
2.0	.82	.74	.67	.78	.71	.65	.72	.66	.61	.65	.61	.57	.60	.56	.53	.49
3.0	.71	.62	.55	.68	.60	.53	.62	.55	.50	.57	.51	.47	.52	.47	.43	.40
4.0	.62	.53	.46	.60	.51	.44	.55	.47	.42	.50	.44	.39	.46	.41	.37	.34
5.0	.55	.46	.39	.53	.44	.38	.49	.41	.36	.45	.38	.33	.41	.36	.31	.29
6.0	.49	.40	.33	.47	.39	.33	.44	.36	.31	.40	.34	.29	.37	.32	.27	.25
7.0	.45	.36	.29	.43	.34	.28	.40	.32	.27	.37	.30	.25	.34	.28	.24	.22
8.0	.41	.32	.26	.39	.31	.25	.36	.29	.24	.33	.27	.23	.31	.25	.21	.19
9.0	.37	.29	.23	.36	.28	.22	.33	.26	.21	.31	.25	.20	.28	.23	.19	.17
10.0	.34	.26	.21	.33	.25	.20	.31	.24	.19	.28	.22	.18	.26	.21	.17	.15



C Range: 0 - 360DEG
 C Interval: 90.0DEG
 Test Speed: HIGH
 Temperature:25.3℃
 Operators:DAMIN
 Test Date:04 February 2026

γ Range: 0 - 180DEG
 γ Interval: 1.0DEG
 Test System:EVERFINE GO-2000B_V1 SYSTEM V2.00.459
 Humidity:65.0%
 Test Distance:7.380m [K=1.0000]
 Remarks:

WEC AND CCEC

Test:U:120.05V I:0.1448A P:16.320W PF:0.9388 Freq:59.98Hz Lamp Flux:1107.96x1 lm		
NAME: WS14-033B-金色 16W 30K	TYPE:	WEIGHT:
SPEC.:	DIM.:	SERIAL No.: 1
MFR.: EVERFINE	SUR.:	Shielding Angle:

ρ _{CC}	80%			70%			50%			30%			10%			0
ρ _w	50%	30%	10%	50%	30%	10%	50%	30%	10%	50%	30%	10%	50%	30%	10%	0
ρ _{fc}	20%			20%			20%			20%			20%			0
RCR	RCR:Room Cavity Ratio						Wall Exitance Coefficients(WEC)									
0.0																
1.0	.382	.217	.069	.369	.210	.067	.345	.198	.063	.322	.186	.060	.302	.175	.056	
2.0	.331	.182	.056	.320	.176	.054	.298	.166	.051	.278	.156	.049	.259	.147	.046	
3.0	.295	.157	.047	.284	.152	.046	.264	.143	.044	.246	.135	.041	.229	.127	.039	
4.0	.266	.138	.041	.256	.134	.040	.238	.126	.038	.221	.119	.036	.206	.112	.034	
5.0	.242	.123	.036	.233	.120	.035	.217	.113	.033	.201	.106	.032	.187	.100	.030	
6.0	.221	.111	.032	.214	.108	.031	.199	.102	.030	.185	.096	.028	.172	.090	.027	
7.0	.204	.101	.029	.197	.098	.028	.184	.093	.027	.171	.088	.025	.159	.083	.024	
8.0	.190	.093	.026	.183	.090	.025	.170	.085	.024	.159	.080	.023	.148	.076	.022	
9.0	.177	.085	.024	.171	.083	.023	.159	.079	.022	.148	.074	.021	.138	.070	.020	
10.0	.165	.079	.022	.160	.077	.022	.149	.073	.021	.139	.069	.020	.130	.065	.019	

ρ _{CC}	80%			70%			50%			30%			10%			0
ρ _w	50%	30%	10%	50%	30%	10%	50%	30%	10%	50%	30%	10%	50%	30%	10%	0
ρ _{fc}	20%			20%			20%			20%			20%			0
RCR	RCR:Room Cavity Ratio						Ceiling Cavity Exitance Coefficients(CCEC)									
0.0	.333	.333	.333	.284	.284	.284	.194	.194	.194	.111	.111	.111	.036	.036	.036	
1.0	.329	.299	.272	.281	.257	.234	.192	.176	.162	.111	.102	.094	.035	.033	.030	
2.0	.322	.276	.238	.276	.238	.205	.189	.164	.143	.109	.096	.084	.035	.031	.027	
3.0	.314	.260	.216	.270	.224	.187	.185	.156	.131	.107	.091	.077	.034	.030	.025	
4.0	.307	.247	.202	.263	.214	.175	.181	.149	.123	.105	.087	.073	.034	.028	.024	
5.0	.299	.237	.192	.257	.205	.167	.177	.143	.118	.102	.084	.070	.033	.027	.023	
6.0	.292	.229	.185	.251	.199	.161	.173	.139	.114	.100	.082	.068	.032	.027	.022	
7.0	.285	.223	.180	.245	.193	.156	.169	.135	.111	.098	.080	.066	.032	.026	.022	
8.0	.278	.217	.176	.239	.188	.153	.166	.132	.109	.096	.078	.065	.031	.026	.021	
9.0	.272	.213	.173	.234	.184	.151	.162	.130	.107	.094	.077	.064	.031	.025	.021	
10.0	.266	.208	.170	.229	.181	.148	.159	.127	.105	.093	.075	.063	.030	.025	.021	

C Range: 0 - 360DEG
 C Interval: 90.0DEG
 Test Speed: HIGH
 Temperature:25.3℃
 Operators:DAMIN
 Test Date:04 February 2026

γ Range: 0 - 180DEG
 γ Interval: 1.0DEG
 Test System:EVERFINE GO-2000B_V1 SYSTEM V2.00.459
 Humidity:65.0%
 Test Distance:7.380m [K=1.0000]
 Remarks:

UGR(Unified Glare Rating) Table

Test:U:120.05V I:0.1448A P:16.320W PF:0.9388 Freq:59.98Hz Lamp Flux:1107.96x1 lm		
NAME: WS14-033B-金色 16W 30K	TYPE:	WEIGHT:
SPEC.:	DIM.:	SERIAL No.: 1
MFR.: EVERFINE	SUR.:	Shielding Angle:

ceiling/cavity	0.7	0.7	0.5	0.5	0.3	0.7	0.7	0.5	0.5	0.3
walls	0.5	0.3	0.5	0.3	0.3	0.5	0.3	0.5	0.3	0.3
working plane	0.2	0.2	0.2	0.2	0.2	0.2	0.2	0.2	0.2	0.2

Room dimensions	Viewed crosswise					Viewed endwise				
x = 2H y = 2H	16.0	17.4	16.6	17.9	18.5	14.1	15.5	14.6	16.0	16.5
3H	18.8	20.1	19.4	20.6	21.2	15.6	16.8	16.1	17.4	18.0
4H	20.4	21.6	21.0	22.2	22.8	16.2	17.4	16.7	17.9	18.6
6H	22.2	23.3	22.7	23.9	24.5	16.6	17.7	17.2	18.3	19.0
8H	23.1	24.2	23.7	24.8	25.5	16.7	17.8	17.3	18.4	19.1
12H	24.3	25.3	24.9	25.9	26.6	16.8	17.8	17.4	18.4	19.1
4H 2H	16.6	17.8	17.1	18.3	19.0	15.1	16.3	15.7	16.9	17.5
3H	19.5	20.6	20.1	21.2	21.9	16.9	18.0	17.5	18.6	19.3
4H	21.3	22.2	21.9	22.9	23.6	17.7	18.7	18.3	19.3	20.0
6H	23.2	24.1	23.9	24.7	25.5	18.3	19.2	19.0	19.8	20.6
8H	24.3	25.2	25.0	25.8	26.6	18.5	19.4	19.2	20.0	20.8
12H	25.6	26.4	26.3	27.1	27.9	18.7	19.5	19.4	20.1	20.9
8H 4H	21.5	22.3	22.2	23.0	23.8	18.7	19.5	19.3	20.1	20.9
6H	23.8	24.4	24.5	25.1	25.9	19.7	20.3	20.4	21.0	21.8
8H	25.1	25.7	25.8	26.4	27.2	20.1	20.7	20.8	21.4	22.2
12H	26.6	27.2	27.4	27.9	28.7	20.5	21.0	21.2	21.7	22.6
12H 4H	21.5	22.3	22.2	23.0	23.8	19.0	19.7	19.7	20.4	21.2
6H	23.8	24.5	24.6	25.2	26.0	20.2	20.8	20.9	21.5	22.3
8H	25.2	25.8	26.0	26.5	27.4	20.8	21.3	21.5	22.0	22.9

Variations with the observer position at spacings(CIE Pub.117):		
S = 1.0H	+ 0.1 / - 0.1	+ 0.1 / - 0.1
1.5H	+ 0.2 / - 0.2	+ 0.2 / - 0.3
2.0H	+ 0.2 / - 0.3	+ 0.2 / - 0.5

CIE Pub.117, 1108 lm Total Lamp Luminous Flux Correct (8log(F/F0) = 0.4)
Area: 0.1 m2

C Range: 0 - 360DEG	γ Range: 0 - 180DEG
C Interval: 90.0DEG	γ Interval: 1.0DEG
Test Speed: HIGH	Test System:EVERFINE GO-2000B_V1 SYSTEM V2.00.459
Temperature:25.3℃	Humidity:65.0%
Operators:DAMIN	Test Distance:7.380m [K=1.0000]
Test Date:04 February 2026	Remarks:

UTILIZATION FACTORS TABLE

Test:U:120.05V I:0.1448A P:16.320W PF:0.9388 Freq:59.98Hz Lamp Flux:1107.96x1 lm		
NAME: WS14-033B-金色 16W 30K	TYPE:	WEIGHT:
SPEC.:	DIM.:	SERIAL No.: 1
MFR.: EVERFINE	SUR.:	Shielding Angle:

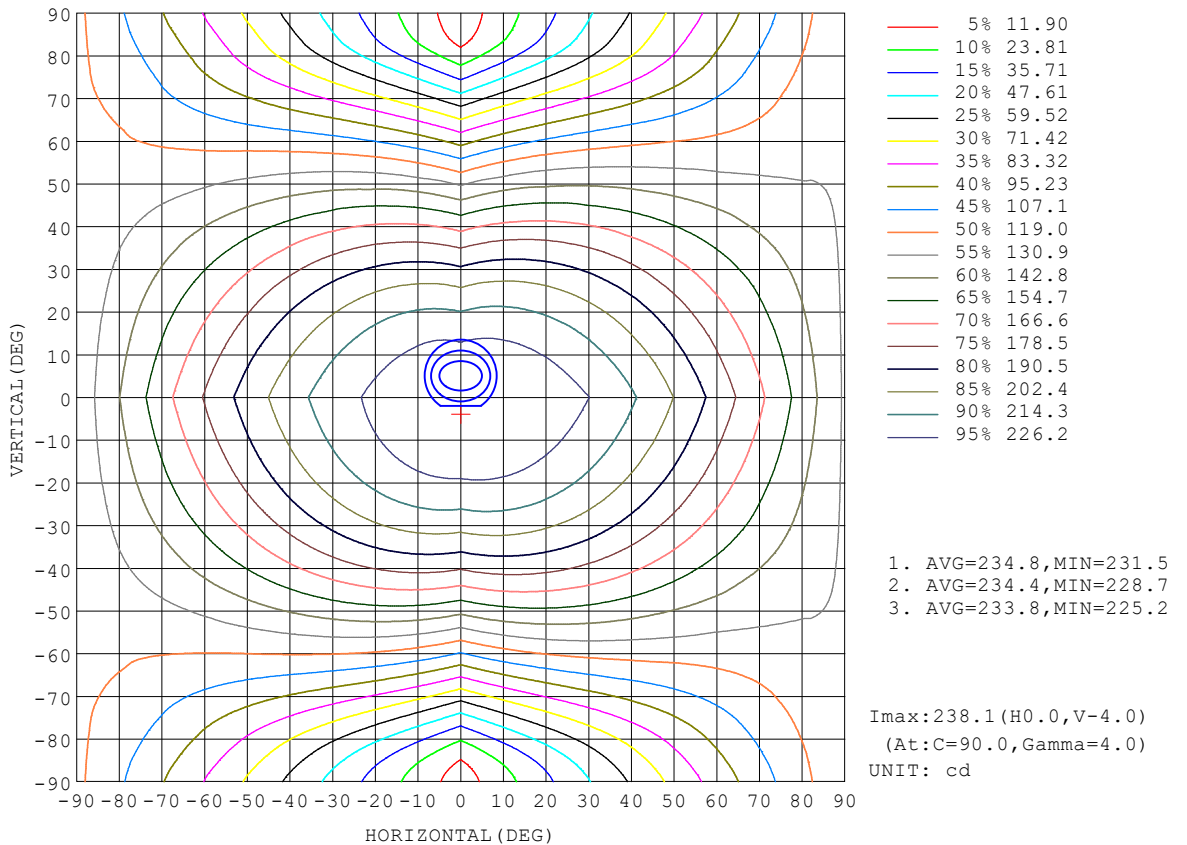
REFLECTANCE										
Ceiling	0.8	0.8	0.8	0.7	0.7	0.7	0.5	0.5	0.5	0
Walls	0.7	0.5	0.3	0.7	0.5	0.3	0.7	0.5	0.3	0
Working plane	0.2	0.2	0.2	0.2	0.2	0.2	0.2	0.2	0.2	0
ROOM INDEX	UTILIZATION FACTORS (PERCENT) $k(RI) \times RCR = 5$									
k = 0.60	48	35	28	46	35	28	44	34	27	20
0.80	57	44	36	55	43	35	52	42	35	27
1.00	65	52	43	63	51	43	59	51	42	33
1.25	72	59	51	69	58	50	65	55	48	38
1.50	77	65	56	74	63	55	69	60	53	42
2.00	84	73	65	81	71	63	75	67	60	48
2.50	88	78	70	85	76	69	79	71	65	52
3.00	92	83	76	89	80	74	82	75	69	56
4.00	97	89	83	93	86	80	86	80	75	60
5.00	100	93	87	96	90	84	88	83	79	64
ROOM INDEX	UF(total)									Direct
According to DIN EN 13032-2 2004			Suspended				SHRNOM = 1.25			

C Range: 0 - 360DEG
 C Interval: 90.0DEG
 Test Speed: HIGH
 Temperature:25.3°C
 Operators:DAMIN
 Test Date:04 February 2026

γ Range: 0 - 180DEG
 γ Interval: 1.0DEG
 Test System:EVERFINE GO-2000B_V1 SYSTEM V2.00.459
 Humidity:65.0%
 Test Distance:7.380m [K=1.0000]
 Remarks:

ISOCANDELA DIAGRAM

Test:U:120.05V I:0.1448A P:16.320W PF:0.9388 Freq:59.98Hz Lamp Flux:1107.96x1 lm		
NAME: WS14-033B-金色 16W 30K	TYPE:	WEIGHT:
SPEC.:	DIM.:	SERIAL No.: 1
MFR.: EVERFINE	SUR.:	Shielding Angle:

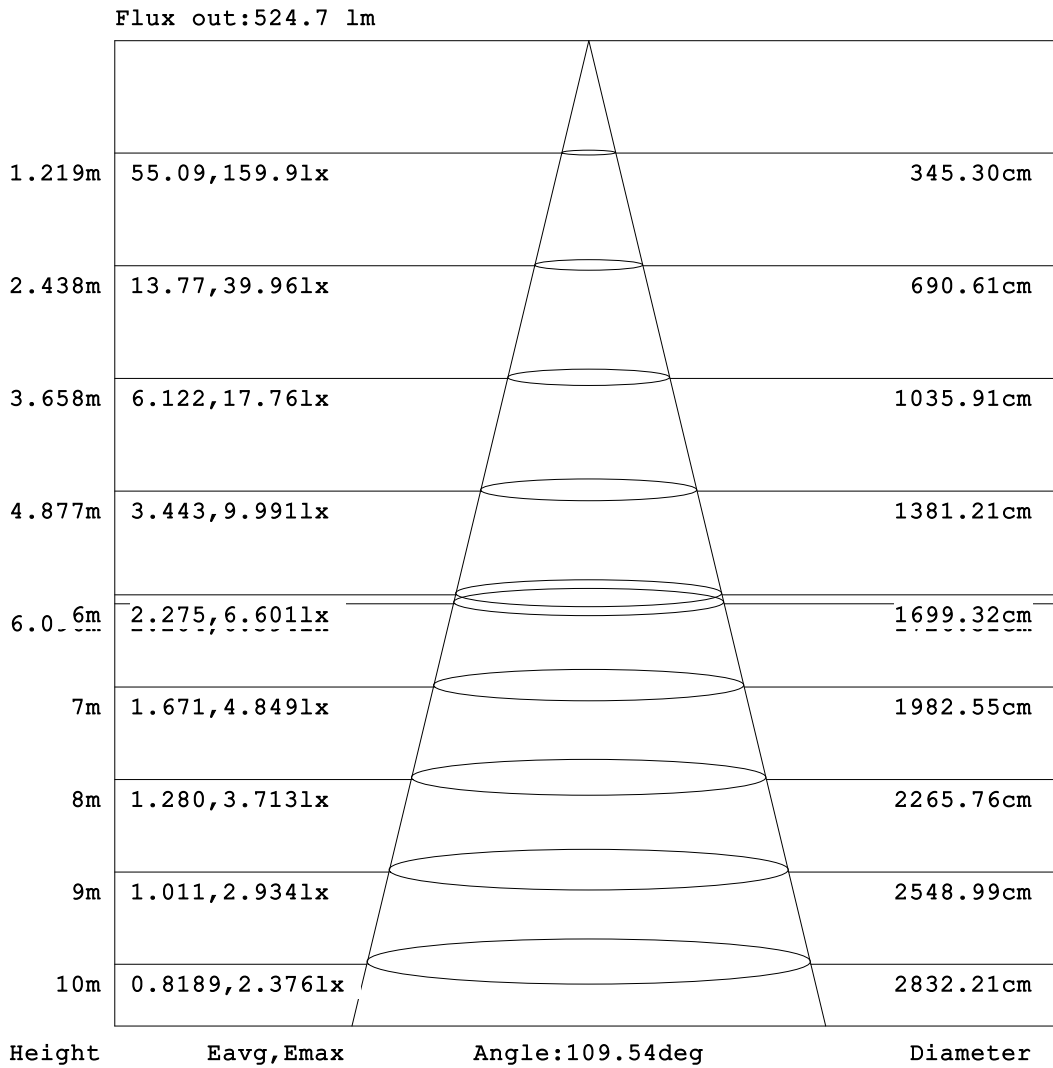


C Range: 0 - 360DEG
C Interval: 90.0DEG
Test Speed: HIGH
Temperature:25.3°C
Operators:DAMIN
Test Date:04 February 2026

γ Range: 0 - 180DEG
γ Interval: 1.0DEG
Test System:EVERFINE GO-2000B_V1 SYSTEM V2.00.459
Humidity:65.0%
Test Distance:7.380m [K=1.0000]
Remarks:

AAI Figure

Test:U:120.05V I:0.1448A P:16.320W PF:0.9388 Freq:59.98Hz Lamp Flux:1107.96x1 lm		
NAME: WS14-033B-金色 16W 30K	TYPE:	WEIGHT:
SPEC.:	DIM.:	SERIAL No.: 1
MFR.: EVERFINE	SUR.:	Shielding Angle:



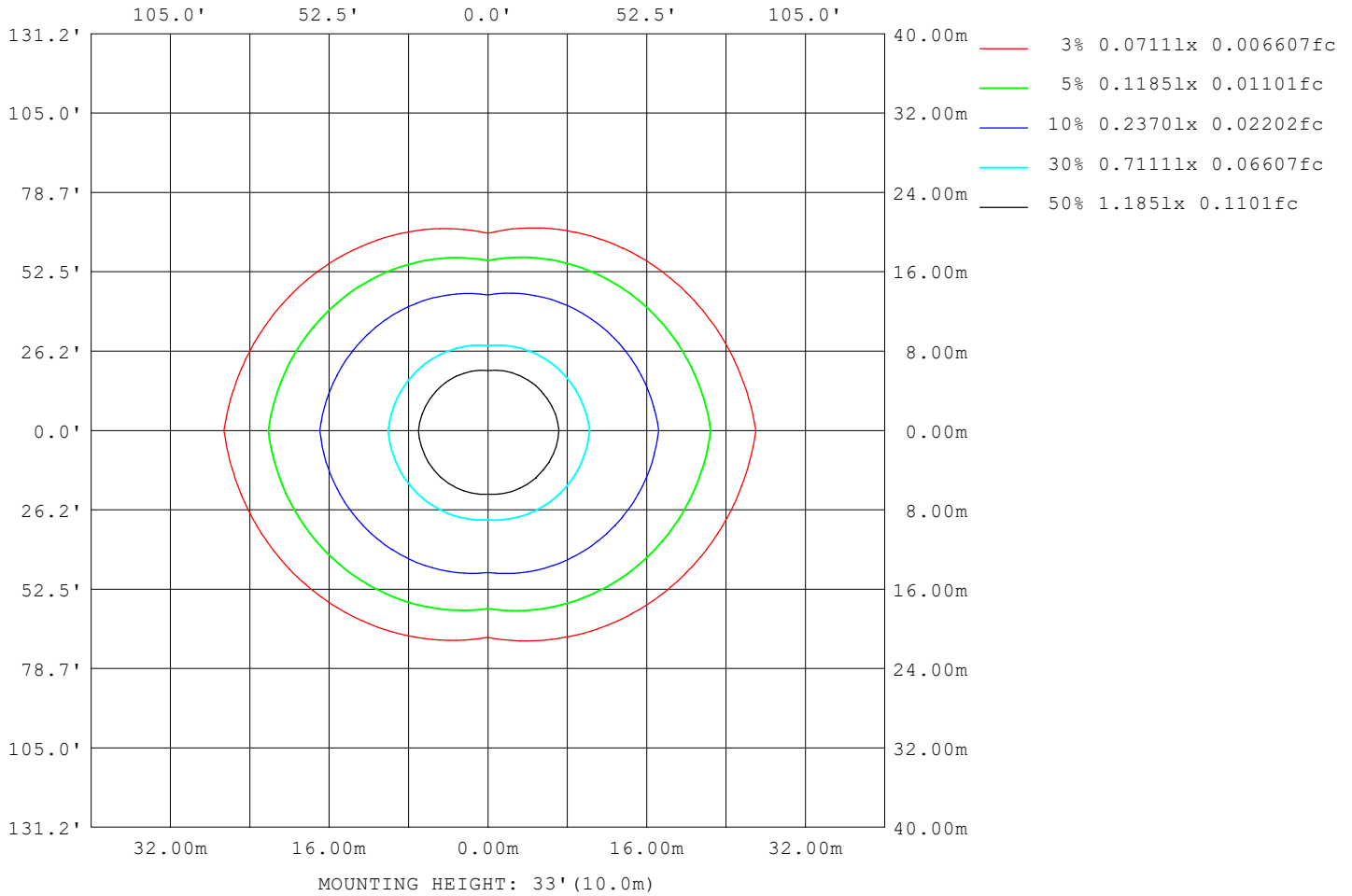
Note:The Curves indicate the illuminated area and the average illumination when the luminaire is at different distance.

C Range: 0 - 360DEG
C Interval: 90.0DEG
Test Speed: HIGH
Temperature:25.3°C
Operators:DAMIN
Test Date:04 February 2026

γ Range: 0 - 180DEG
γ Interval: 1.0DEG
Test System:EVERFINE GO-2000B_V1 SYSTEM V2.00.459
Humidity:65.0%
Test Distance:7.380m [K=1.0000]
Remarks:

ISOLUX DIAGRAM

Test:U:120.05V I:0.1448A P:16.320W PF:0.9388 Freq:59.98Hz Lamp Flux:1107.96x1 lm		
NAME: WS14-033B-金色 16W 30K	TYPE:	WEIGHT:
SPEC.:	DIM.:	SERIAL No.: 1
MFR.: EVERFINE	SUR.:	Shielding Angle:



C Range: 0 - 360DEG
 C Interval: 90.0DEG
 Test Speed: HIGH
 Temperature:25.3°C
 Operators:DAMIN
 Test Date:04 February 2026

γ Range: 0 - 180DEG
 γ Interval: 1.0DEG
 Test System:EVERFINE GO-2000B_V1 SYSTEM V2.00.459
 Humidity:65.0%
 Test Distance:7.380m [K=1.0000]
 Remarks:

LED Avg.L Report

Test:U:120.05V I:0.1448A P:16.320W PF:0.9388 Freq:59.98Hz Lamp Flux:1107.96x1 lm		
NAME: WS14-033B-金色 16W 30K	TYPE:	WEIGHT:
SPEC.:	DIM.:	SERIAL No.: 1
MFR.: EVERFINE	SUR.:	Shielding Angle:

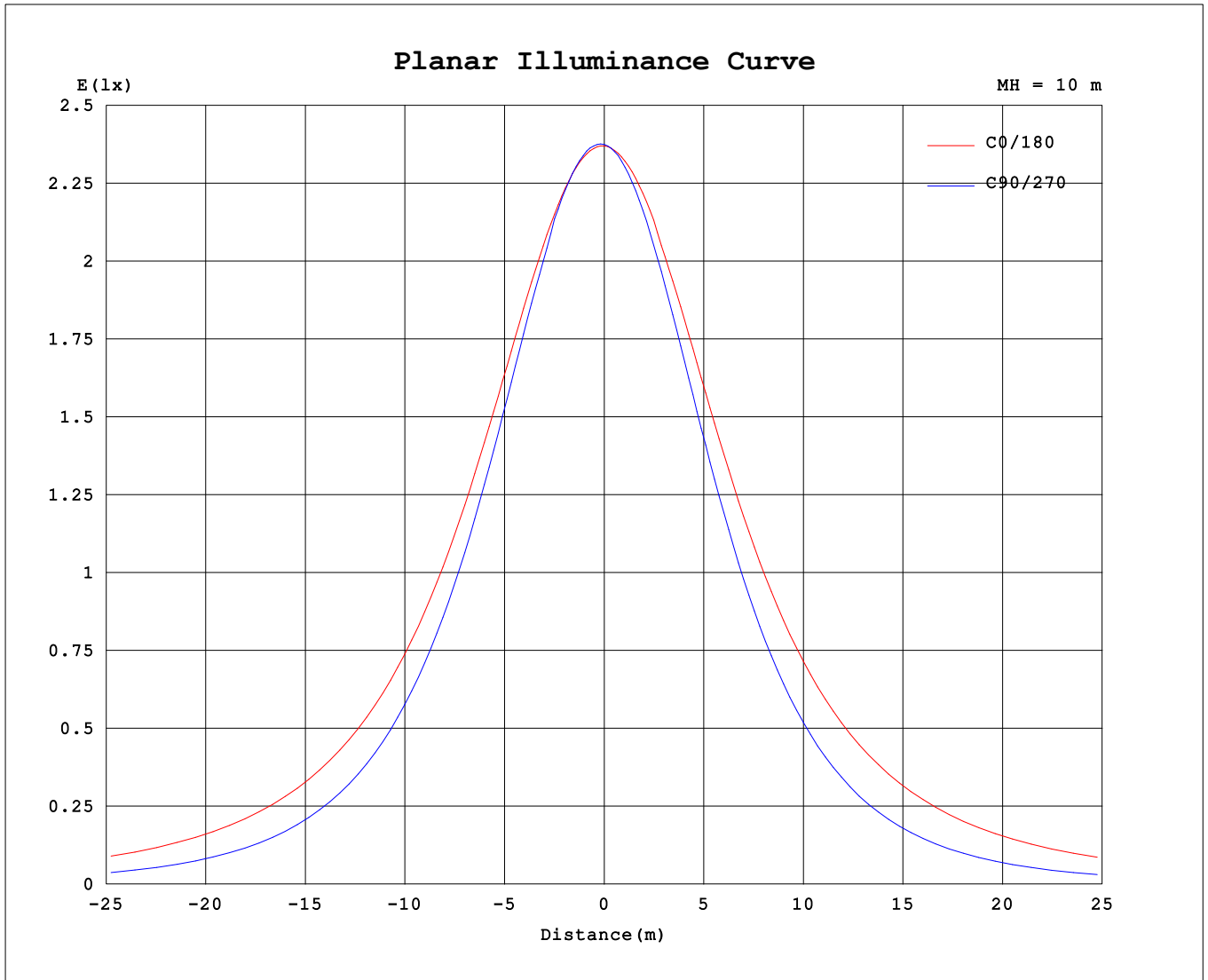
AvgL	cd/m2
L_0~180 (65) av	4123
L_0~180 (75) av	6026
L_0~180 (85) av	15641
L_90~270 (65) av	1857
L_90~270 (75) av	1480
L_90~270 (85) av	1069
L_45 (65) av	2702
L_45 (75) av	3176
L_45 (85) av	6507

Standard: GB/T 29293-2012

C Range: 0 - 360DEG
 C Interval: 90.0DEG
 Test Speed: HIGH
 Temperature:25.3℃
 Operators:DAMIN
 Test Date:04 February 2026

γ Range: 0 - 180DEG
 γ Interval: 1.0DEG
 Test System:EVERFINE GO-2000B_V1 SYSTEM V2.00.459
 Humidity:65.0%
 Test Distance:7.380m [K=1.0000]
 Remarks:

Planar Illuminance Curve



C Range: 0 - 360DEG
 C Interval: 90.0DEG
 Test Speed: HIGH
 Temperature: 25.3 °C
 Operators: DAMIN
 Test Date: 04 February 2026

γ Range: 0 - 180DEG
 γ Interval: 1.0DEG
 Test System: EVERFINE GO-2000B_V1 SYSTEM V2.00.459
 Humidity: 65.0%
 Test Distance: 7.380m [K=1.0000]
 Remarks:

LUMINOUS DISTRIBUTION INTENSITY DATA

Test:U:120.05V I:0.1448A P:16.320W PF:0.9388 Freq:59.98Hz Lamp Flux:1107.96x1 lm		
NAME: WS14-033B-金色 16W 30K	TYPE:	WEIGHT:
SPEC.:	DIM.:	SERIAL No.: 1
MFR.: EVERFINE	SUR.:	Shielding Angle:

Table--1

UNIT: cd

C (DEG) \ γ (DEG)	0	90	180	270															
0	237	237	237	237															
5	237	238	236	235															
10	236	236	235	230															
15	235	232	232	223															
20	233	225	228	214															
25	230	216	225	204															
30	226	206	220	192															
35	221	194	215	178															
40	216	179	209	163															
45	209	163	202	147															
50	202	146	195	130															
55	194	127	188	110															
60	186	106	179	91.2															
65	178	85.3	171	71.7															
70	169	63.9	162	52.1															
75	160	43.3	152	33.3															
80	150	25.0	143	16.8															
85	140	11.6	133	7.07															
90	129	5.88	122	4.80															
95	116	5.69	104	3.83															
100	82.0	6.61	55.0	3.64															
105	59.9	7.68	59.1	4.03															
110	78.4	8.88	72.1	4.67															
115	71.4	9.86	65.0	5.58															
120	64.7	11.1	58.2	5.97															
125	58.3	12.2	51.6	5.84															
130	52.2	13.2	45.7	4.56															
135	46.4	14.3	40.6	4.06															
140	41.0	15.2	35.5	5.15															
145	36.1	16.0	26.3	5.01															
150	16.8	16.8	14.0	4.21															
155	15.0	17.5	13.3	4.27															
160	14.2	16.9	12.8	4.37															
165	15.5	15.3	14.4	4.50															
170	14.7	14.3	13.0	5.92															
175	11.7	14.9	12.5	9.45															
180	13.1	13.0	13.1	13.0															

C Range: 0 - 360DEG
 C Interval: 90.0DEG
 Test Speed: HIGH
 Temperature:25.3℃
 Operators:DAMIN
 Test Date:04 February 2026

γ Range: 0 - 180DEG
 γ Interval: 1.0DEG
 Test System:EVERFINE GO-2000B_V1 SYSTEM V2.00.459
 Humidity:65.0%
 Test Distance:7.380m [K=1.0000]
 Remarks: