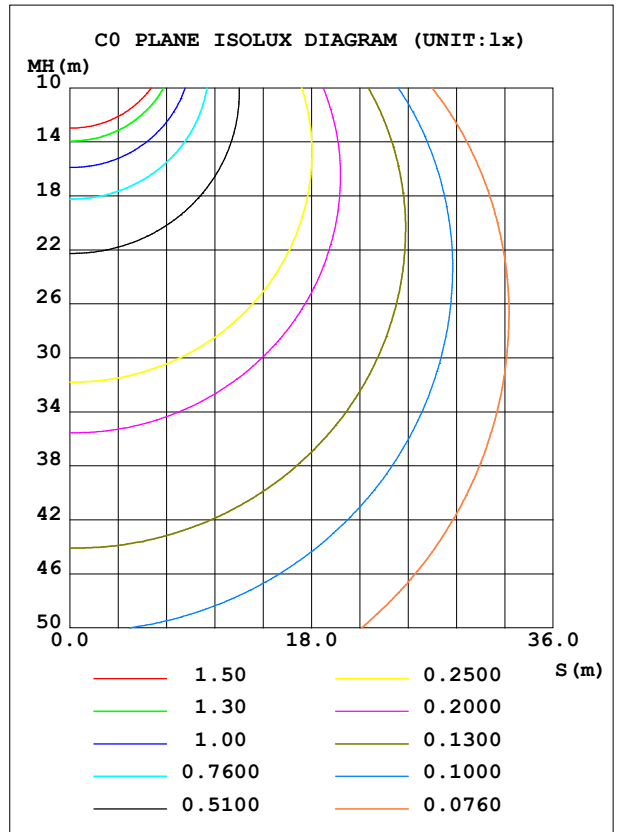
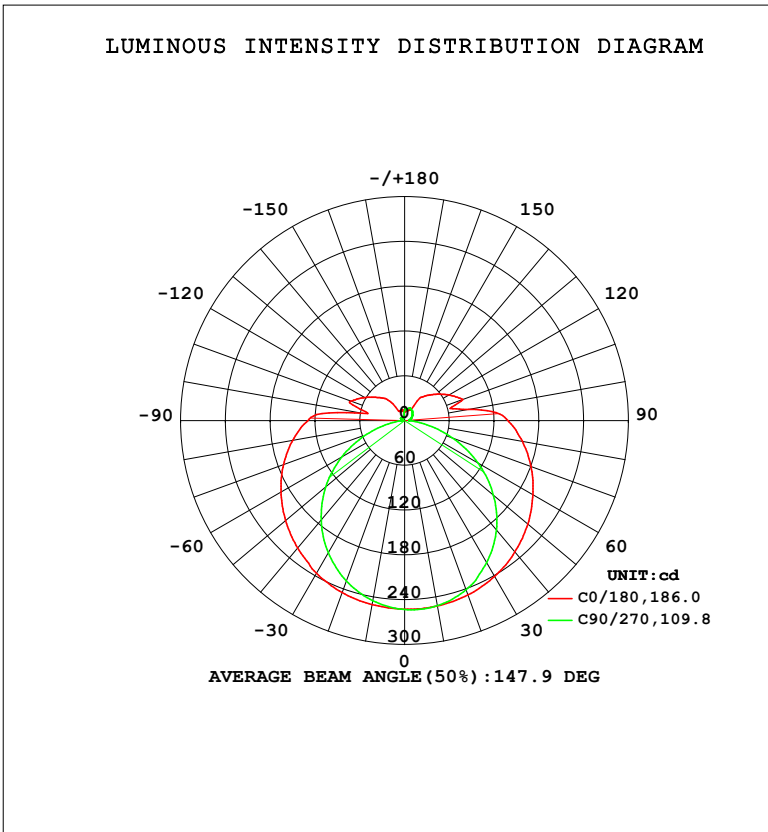


LUMINAIRE PHOTOMETRIC TEST REPORT

Test:U:120.03V I:0.1459A P:16.474W PF:0.9407 Freq:59.98Hz Lamp Flux:1180.6x1 lm		
NAME: WS14-033B-金色 16W 35K	TYPE:	WEIGHT:
SPEC.:	DIM.:	SERIAL No.: 1
MFR.: EVERFINE	SUR.:	Shielding Angle:

DATA OF LAMP		PHOTOMETRIC DATA				Eff: 71.66 lm/W
MODEL	3500K	I _{max} (cd)	253.8	S/MH (C0/180)	1.40	
NOMINAL POWER (W)	16	LOR (%)	100.0	S/MH (C90/270)	1.21	
RATED VOLTAGE (V)	120	TOTAL FLUX (lm)	1180.6	η UP, DN (C0-180)	10.3, 42.0	
NOMINAL FLUX (lm)	1180.6	CIE CLASS	SEMI-D.	η UP, DN (C180-360)	8.3, 39.3	
LAMPS INSIDE	1	η up (%)	18.6	CIBSE SHR NOM	1.50	
TEST VOLTAGE (V)	120	η down (%)	81.4	CIBSE SHR MAX	1.50	



C Range: 0 - 360DEG
 C Interval: 90.0DEG
 Test Speed: HIGH
 Temperature: 25.3 °C
 Operators: DAMIN
 Test Date: 04 February 2026

γ Range: 0 - 180DEG
 γ Interval: 1.0DEG
 Test System: EVERFINE GO-2000B_V1 SYSTEM V2.00.459
 Humidity: 65.0%
 Test Distance: 7.380m [K=1.0000]
 Remarks:

ZONAL FLUX DIAGRAM

ZONAL FLUX DIAGRAM:

γ	C0	C90	C180	C270				γ	Φ zone	Φ total	%lum,lamp
10	252.3	251.9	250.3	245.0				0- 10	24.00	24.00	2.03,2.03
20	248.4	241.1	245.1	228.6				10- 20	69.56	93.56	7.92,7.92
30	241.2	219.9	236.4	204.6				20- 30	107.9	201.5	17.1,17.1
40	229.9	191.4	222.9	174.0				30- 40	135.0	336.5	28.5,28.5
50	215.5	155.5	208.4	138.0				40- 50	148.6	485.2	41.1,41.1
60	198.5	113.7	191.3	96.85				50- 60	147.7	632.9	53.6,53.6
70	180.4	68.23	172.8	54.36				60- 70	133.4	766.3	64.9,64.9
80	160.2	26.58	152.2	16.49				70- 80	109.4	875.6	74.2,74.2
90	138.4	6.196	129.8	5.237				80- 90	85.23	960.9	81.4,81.4
100	87.13	6.955	58.13	3.883				90-100	63.87	1025	86.8,86.8
110	83.31	9.337	76.67	4.964				100-110	39.58	1064	90.2,90.2
120	68.88	11.65	62.00	6.297				110-120	40.11	1104	93.5,93.5
130	55.24	13.93	48.65	4.863				120-130	30.50	1135	96.1,96.1
140	43.30	16.05	37.79	5.540				130-140	21.78	1157	98,98
150	17.41	17.81	14.75	4.467				140-150	12.95	1170	99.1,99.1
160	14.84	17.79	13.52	4.644				150-160	6.117	1176	99.6,99.6
170	15.51	15.07	13.70	6.230				160-170	3.622	1179	99.9,99.9
180	13.82	13.67	13.81	13.68				170-180	1.203	1181	100,100
DEG	LUMINOUS INTENSITY:cd								UNIT:lm		

Conical surface Flux(90deg): 410.03 lm

%lum = 34.7%

%lamp = 34.7%

Conical surface Flux(120deg): 632.89 lm

%lum = 53.6%

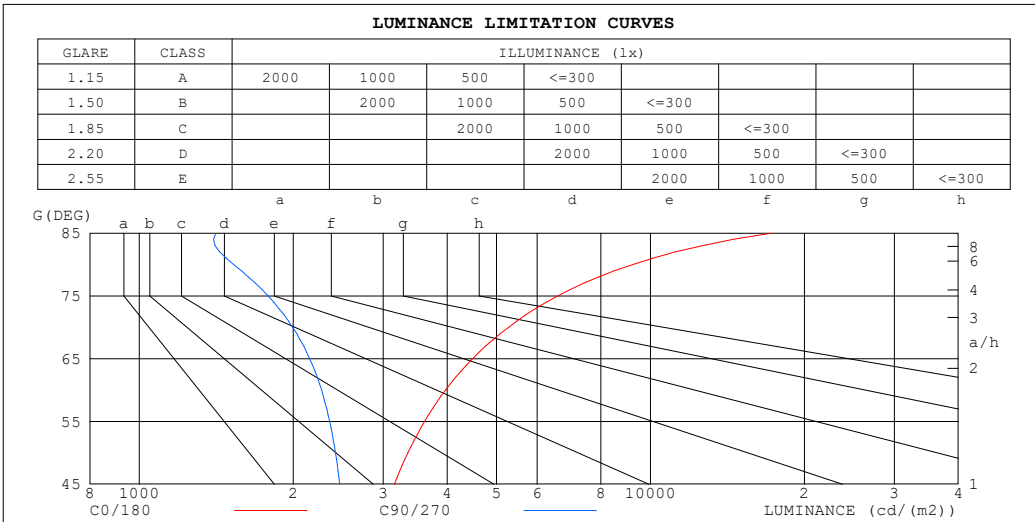
%lamp = 53.6%

C Range: 0 - 360DEG
 C Interval: 90.0DEG
 Test Speed: HIGH
 Temperature:25.3°C
 Operators:DAMIN
 Test Date:04 February 2026

γ Range: 0 - 180DEG
 γ Interval: 1.0DEG
 Test System:EVERFINE GO-2000B_V1 SYSTEM V2.00.459
 Humidity:65.0%
 Test Distance:7.380m [K=1.0000]
 Remarks:

LUMINANCE LIMITATION CURVES

Test:U:120.03V I:0.1459A P:16.474W PF:0.9407 Freq:59.98Hz Lamp Flux:1180.6x1 lm		
NAME: WS14-033B-金色 16W 35K	TYPE:	WEIGHT:
SPEC.:	DIM.:	SERIAL No.: 1
MFR.: EVERFINE	SUR.:	Shielding Angle:



LUMINANCE cd/(m2)		
G (DEG)	C0/180	C90/270
85	17184	1412
80	9223	1531
75	6585	1786
70	5276	1995
65	4487	2154
60	3971	2273
55	3615	2357
50	3352	2419
45	3155	2465

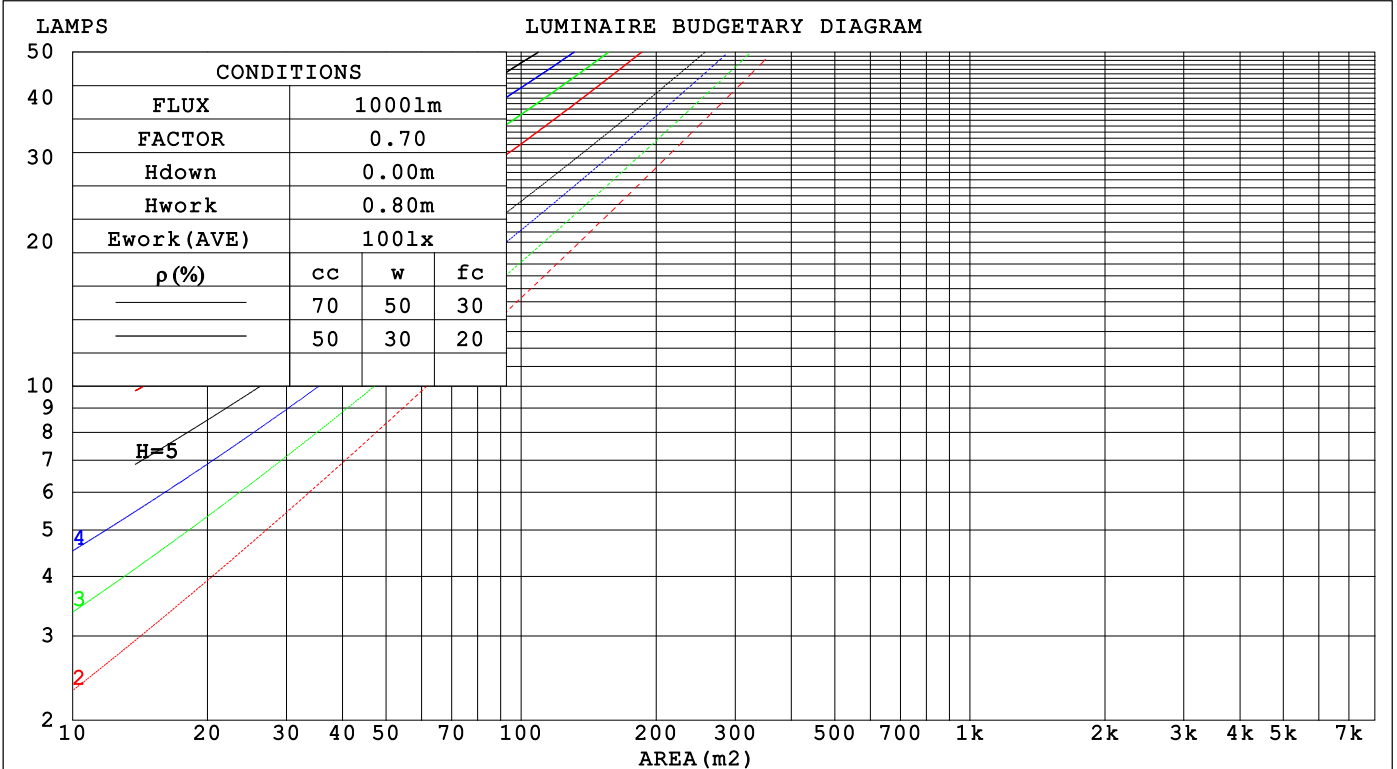
C Range: 0 - 360DEG
 C Interval: 90.0DEG
 Test Speed: HIGH
 Temperature:25.3℃
 Operators:DAMIN
 Test Date:04 February 2026

γ Range: 0 - 180DEG
 γ Interval: 1.0DEG
 Test System:EVERFINE GO-2000B_V1 SYSTEM V2.00.459
 Humidity:65.0%
 Test Distance:7.380m [K=1.0000]
 Remarks:

CU AND LUMINAIRE BUDGETARY ESTIMATE DIAGRAM

Test:U:120.03V I:0.1459A P:16.474W PF:0.9407 Freq:59.98Hz Lamp Flux:1180.6x1 lm		
NAME: WS14-033B-金色 16W 35K	TYPE:	WEIGHT:
SPEC.:	DIM.:	SERIAL No.: 1
MFR.: EVERFINE	SUR.:	Shielding Angle:

pcc	80%			70%			50%			30%			10%			0
pw	50%	30%	10%	50%	30%	10%	50%	30%	10%	50%	30%	10%	50%	30%	10%	0
pfc	20%			20%			20%			20%			20%			0
RCR	RCR:Room Cavity Ratio Coefficients of Utilization(CU)															
0.0	1.15	1.15	1.15	1.10	1.10	1.10	1.01	1.01	1.01	.93	.93	.93	.85	.85	.85	.81
1.0	.96	.90	.86	.92	.87	.82	.84	.80	.76	.77	.74	.71	.70	.68	.65	.62
2.0	.82	.74	.67	.78	.71	.65	.72	.66	.61	.66	.61	.57	.60	.56	.53	.49
3.0	.71	.62	.55	.68	.60	.53	.62	.55	.50	.57	.51	.47	.52	.47	.44	.40
4.0	.62	.53	.46	.60	.51	.44	.55	.47	.42	.50	.44	.39	.46	.41	.37	.34
5.0	.55	.46	.39	.53	.44	.38	.49	.41	.36	.45	.38	.34	.41	.36	.31	.29
6.0	.49	.40	.33	.48	.39	.33	.44	.36	.31	.40	.34	.29	.37	.32	.27	.25
7.0	.45	.36	.29	.43	.34	.28	.40	.32	.27	.37	.30	.26	.34	.28	.24	.22
8.0	.41	.32	.26	.39	.31	.25	.36	.29	.24	.33	.27	.23	.31	.25	.21	.19
9.0	.37	.29	.23	.36	.28	.22	.33	.26	.21	.31	.25	.20	.29	.23	.19	.17
10.0	.34	.26	.21	.33	.25	.20	.31	.24	.19	.28	.23	.18	.26	.21	.17	.15



C Range: 0 - 360DEG
 C Interval: 90.0DEG
 Test Speed: HIGH
 Temperature:25.3℃
 Operators:DAMIN
 Test Date:04 February 2026

γ Range: 0 - 180DEG
 γ Interval: 1.0DEG
 Test System:EVERFINE GO-2000B_V1 SYSTEM V2.00.459
 Humidity:65.0%
 Test Distance:7.380m [K=1.0000]
 Remarks:

WEC AND CCEC

Test:U:120.03V I:0.1459A P:16.474W PF:0.9407 Freq:59.98Hz Lamp Flux:1180.6x1 lm		
NAME: WS14-033B-金色 16W 35K	TYPE:	WEIGHT:
SPEC.:	DIM.:	SERIAL No.: 1
MFR.: EVERFINE	SUR.:	Shielding Angle:

ρ _{CC}	80%			70%			50%			30%			10%			0
ρ _w	50%	30%	10%	50%	30%	10%	50%	30%	10%	50%	30%	10%	50%	30%	10%	0
ρ _{fc}	20%			20%			20%			20%			20%			0
RCR	RCR:Room Cavity Ratio						Wall Exitance Coefficients(WEC)									
0.0																
1.0	.382	.217	.069	.369	.210	.067	.345	.198	.063	.322	.186	.060	.302	.175	.056	
2.0	.331	.182	.056	.320	.176	.054	.298	.166	.051	.278	.156	.049	.259	.147	.046	
3.0	.295	.157	.047	.284	.152	.046	.264	.143	.044	.246	.135	.041	.229	.127	.039	
4.0	.266	.138	.041	.256	.134	.040	.238	.126	.038	.222	.119	.036	.206	.112	.034	
5.0	.242	.123	.036	.233	.120	.035	.217	.113	.033	.201	.106	.032	.187	.100	.030	
6.0	.221	.111	.032	.214	.108	.031	.199	.102	.030	.185	.096	.028	.172	.090	.027	
7.0	.204	.101	.029	.197	.098	.028	.184	.093	.027	.171	.088	.025	.159	.083	.024	
8.0	.190	.093	.026	.183	.090	.025	.170	.085	.024	.159	.080	.023	.148	.076	.022	
9.0	.177	.085	.024	.171	.083	.023	.159	.079	.022	.148	.074	.021	.138	.070	.020	
10.0	.165	.079	.022	.160	.077	.022	.149	.073	.021	.139	.069	.020	.130	.065	.019	

ρ _{CC}	80%			70%			50%			30%			10%			0
ρ _w	50%	30%	10%	50%	30%	10%	50%	30%	10%	50%	30%	10%	50%	30%	10%	0
ρ _{fc}	20%			20%			20%			20%			20%			0
RCR	RCR:Room Cavity Ratio						Ceiling Cavity Exitance Coefficients(CCEC)									
0.0																
1.0	.332	.332	.332	.284	.284	.284	.194	.194	.194	.111	.111	.111	.036	.036	.036	
2.0	.321	.276	.237	.275	.237	.205	.189	.164	.143	.109	.095	.084	.035	.031	.027	
3.0	.314	.259	.216	.269	.224	.187	.185	.155	.131	.107	.091	.077	.034	.029	.025	
4.0	.306	.247	.201	.263	.213	.175	.181	.149	.123	.105	.087	.073	.034	.028	.024	
5.0	.299	.237	.191	.256	.205	.166	.177	.143	.118	.102	.084	.070	.033	.027	.023	
6.0	.291	.229	.184	.250	.198	.161	.173	.139	.114	.100	.082	.067	.032	.027	.022	
7.0	.284	.222	.179	.244	.193	.156	.169	.135	.111	.098	.080	.066	.032	.026	.022	
8.0	.277	.217	.175	.239	.188	.153	.165	.132	.108	.096	.078	.065	.031	.026	.021	
9.0	.271	.212	.172	.234	.184	.150	.162	.129	.107	.094	.076	.064	.031	.025	.021	
10.0	.265	.208	.170	.229	.181	.148	.159	.127	.105	.093	.075	.063	.030	.025	.021	

C Range: 0 - 360DEG
 C Interval: 90.0DEG
 Test Speed: HIGH
 Temperature:25.3℃
 Operators:DAMIN
 Test Date:04 February 2026

γ Range: 0 - 180DEG
 γ Interval: 1.0DEG
 Test System:EVERFINE GO-2000B_V1 SYSTEM V2.00.459
 Humidity:65.0%
 Test Distance:7.380m [K=1.0000]
 Remarks:

UGR(Unified Glare Rating) Table

Test:U:120.03V I:0.1459A P:16.474W PF:0.9407 Freq:59.98Hz Lamp Flux:1180.6x1 lm		
NAME: WS14-033B-金色 16W 35K	TYPE:	WEIGHT:
SPEC.:	DIM.:	SERIAL No.: 1
MFR.: EVERFINE	SUR.:	Shielding Angle:

ceiling/cavity	0.7	0.7	0.5	0.5	0.3	0.7	0.7	0.5	0.5	0.3
walls	0.5	0.3	0.5	0.3	0.3	0.5	0.3	0.5	0.3	0.3
working plane	0.2	0.2	0.2	0.2	0.2	0.2	0.2	0.2	0.2	0.2
Room dimensions	Viewed crosswise					Viewed endwise				
x = 2H y = 2H	16.0	17.4	16.6	17.9	18.5	14.1	15.5	14.6	16.0	16.5
3H	18.8	20.1	19.4	20.6	21.3	15.6	16.9	16.2	17.4	18.0
4H	20.4	21.6	21.0	22.2	22.8	16.2	17.4	16.8	17.9	18.6
6H	22.2	23.3	22.8	23.9	24.5	16.6	17.7	17.2	18.3	19.0
8H	23.2	24.2	23.8	24.8	25.5	16.7	17.8	17.3	18.4	19.1
12H	24.3	25.3	24.9	26.0	26.6	16.8	17.8	17.4	18.4	19.1
4H 2H	16.6	17.8	17.1	18.3	19.0	15.2	16.3	15.7	16.9	17.5
3H	19.5	20.6	20.2	21.2	21.9	16.9	18.0	17.5	18.6	19.3
4H	21.3	22.2	21.9	22.9	23.6	17.7	18.7	18.4	19.3	20.0
6H	23.2	24.1	23.9	24.8	25.5	18.3	19.2	19.0	19.9	20.6
8H	24.4	25.2	25.0	25.8	26.6	18.6	19.4	19.2	20.0	20.8
12H	25.7	26.4	26.3	27.1	27.9	18.7	19.5	19.4	20.1	20.9
8H 4H	21.6	22.4	22.2	23.0	23.8	18.7	19.5	19.4	20.2	20.9
6H	23.8	24.5	24.5	25.2	26.0	19.7	20.3	20.4	21.0	21.9
8H	25.1	25.7	25.8	26.4	27.2	20.1	20.7	20.8	21.4	22.3
12H	26.6	27.2	27.4	27.9	28.8	20.5	21.0	21.2	21.7	22.6
12H 4H	21.6	22.3	22.2	23.0	23.8	19.0	19.7	19.7	20.4	21.2
6H	23.9	24.5	24.6	25.2	26.0	20.2	20.8	20.9	21.5	22.3
8H	25.3	25.8	26.0	26.5	27.4	20.8	21.3	21.5	22.1	22.9
Variations with the observer position at spacings(CIE Pub.117):										
S = 1.0H	+ 0.1 / - 0.1					+ 0.1 / - 0.1				
1.5H	+ 0.2 / - 0.2					+ 0.2 / - 0.3				
2.0H	+ 0.2 / - 0.3					+ 0.2 / - 0.5				

CIE Pub.117, 1181 lm Total Lamp Luminous Flux Correct (8log(F/F0) = 0.6)
Area: 0.1 m2

C Range: 0 - 360DEG	γ Range: 0 - 180DEG
C Interval: 90.0DEG	γ Interval: 1.0DEG
Test Speed: HIGH	Test System:EVERFINE GO-2000B_V1 SYSTEM V2.00.459
Temperature:25.3℃	Humidity:65.0%
Operators:DAMIN	Test Distance:7.380m [K=1.0000]
Test Date:04 February 2026	Remarks:

UTILIZATION FACTORS TABLE

Test:U:120.03V I:0.1459A P:16.474W PF:0.9407 Freq:59.98Hz Lamp Flux:1180.6x1 lm		
NAME: WS14-033B-金色 16W 35K	TYPE:	WEIGHT:
SPEC.:	DIM.:	SERIAL No.: 1
MFR.: EVERFINE	SUR.:	Shielding Angle:

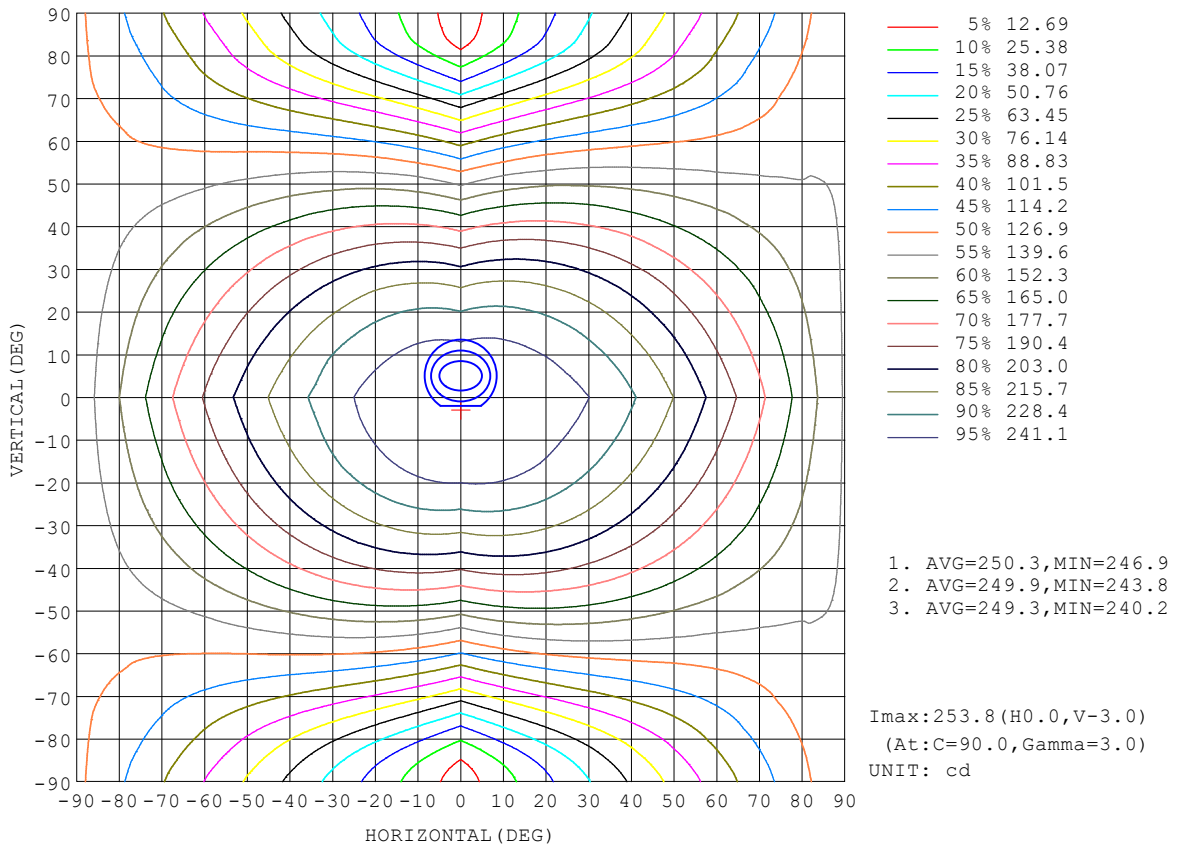
REFLECTANCE										
Ceiling	0.8	0.8	0.8	0.7	0.7	0.7	0.5	0.5	0.5	0
Walls	0.7	0.5	0.3	0.7	0.5	0.3	0.7	0.5	0.3	0
Working plane	0.2	0.2	0.2	0.2	0.2	0.2	0.2	0.2	0.2	0
ROOM INDEX	UTILIZATION FACTORS (PERCENT) $k(RI) \times RCR = 5$									
$k = 0.60$	48	35	28	47	35	28	45	34	27	21
0.80	57	44	36	55	43	36	52	42	35	27
1.00	65	52	43	63	51	43	59	51	42	33
1.25	72	59	51	69	58	50	65	55	48	38
1.50	77	65	56	74	63	55	69	60	53	42
2.00	84	73	65	81	71	63	75	67	60	49
2.50	89	78	70	85	76	69	79	71	65	52
3.00	92	83	76	89	80	74	82	75	69	56
4.00	97	89	83	93	86	80	86	80	75	61
5.00	100	93	87	96	90	84	88	83	79	64
ROOM INDEX	UF(total)									Direct
According to DIN EN 13032-2 2004			Suspended				SHRNOM = 1.25			

C Range: 0 - 360DEG
 C Interval: 90.0DEG
 Test Speed: HIGH
 Temperature:25.3℃
 Operators:DAMIN
 Test Date:04 February 2026

γ Range: 0 - 180DEG
 γ Interval: 1.0DEG
 Test System:EVERFINE GO-2000B_V1 SYSTEM V2.00.459
 Humidity:65.0%
 Test Distance:7.380m [K=1.0000]
 Remarks:

ISOCANDELA DIAGRAM

Test:U:120.03V I:0.1459A P:16.474W PF:0.9407 Freq:59.98Hz Lamp Flux:1180.6x1 lm		
NAME: WS14-033B-金色 16W 35K	TYPE:	WEIGHT:
SPEC.:	DIM.:	SERIAL No.: 1
MFR.: EVERFINE	SUR.:	Shielding Angle:

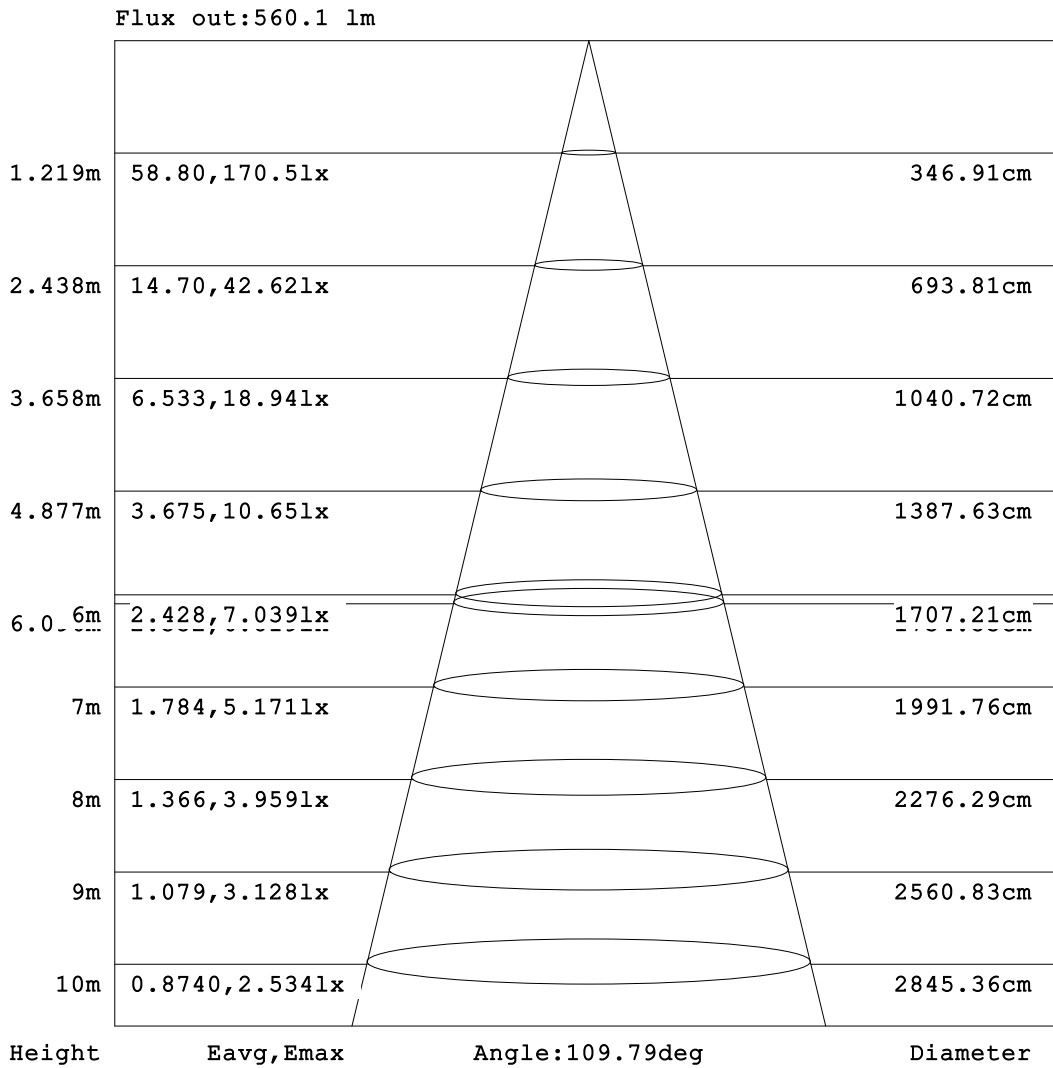


C Range: 0 - 360DEG
C Interval: 90.0DEG
Test Speed: HIGH
Temperature: 25.3 °C
Operators: DAMIN
Test Date: 04 February 2026

γ Range: 0 - 180DEG
γ Interval: 1.0DEG
Test System: EVERFINE GO-2000B_V1 SYSTEM V2.00.459
Humidity: 65.0%
Test Distance: 7.380m [K=1.0000]
Remarks:

AAI Figure

Test:U:120.03V I:0.1459A P:16.474W PF:0.9407 Freq:59.98Hz Lamp Flux:1180.6x1 lm		
NAME: WS14-033B-金色 16W 35K	TYPE:	WEIGHT:
SPEC.:	DIM.:	SERIAL No.: 1
MFR.: EVERFINE	SUR.:	Shielding Angle:



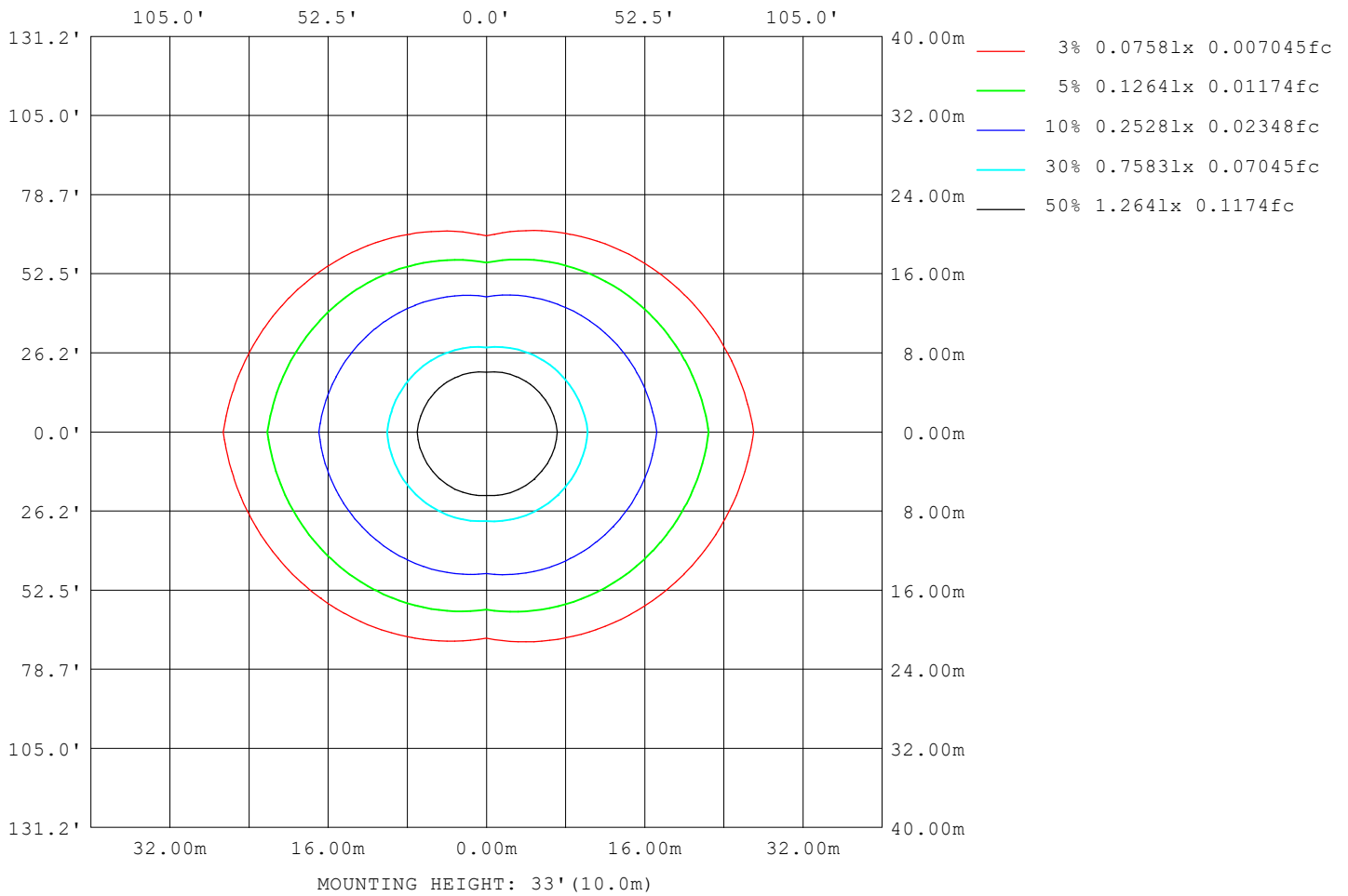
Note: The Curves indicate the illuminated area and the average illumination when the luminaire is at different distance.

C Range: 0 - 360DEG
 C Interval: 90.0DEG
 Test Speed: HIGH
 Temperature: 25.3 °C
 Operators: DAMIN
 Test Date: 04 February 2026

γ Range: 0 - 180DEG
 γ Interval: 1.0DEG
 Test System: EVERFINE GO-2000B_V1 SYSTEM V2.00.459
 Humidity: 65.0%
 Test Distance: 7.380m [K=1.0000]
 Remarks:

ISOLUX DIAGRAM

Test:U:120.03V I:0.1459A P:16.474W PF:0.9407 Freq:59.98Hz Lamp Flux:1180.6x1 lm		
NAME: WS14-033B-金色 16W 35K	TYPE:	WEIGHT:
SPEC.:	DIM.:	SERIAL No.: 1
MFR.: EVERFINE	SUR.:	Shielding Angle:



C Range: 0 - 360DEG
 C Interval: 90.0DEG
 Test Speed: HIGH
 Temperature:25.3°C
 Operators:DAMIN
 Test Date:04 February 2026

γ Range: 0 - 180DEG
 γ Interval: 1.0DEG
 Test System:EVERFINE GO-2000B_V1 SYSTEM V2.00.459
 Humidity:65.0%
 Test Distance:7.380m [K=1.0000]
 Remarks:

LED Avg.L Report

Test:U:120.03V I:0.1459A P:16.474W PF:0.9407 Freq:59.98Hz Lamp Flux:1180.6x1 lm		
NAME: WS14-033B-金色 16W 35K	TYPE:	WEIGHT:
SPEC.:	DIM.:	SERIAL No.: 1
MFR.: EVERFINE	SUR.:	Shielding Angle:

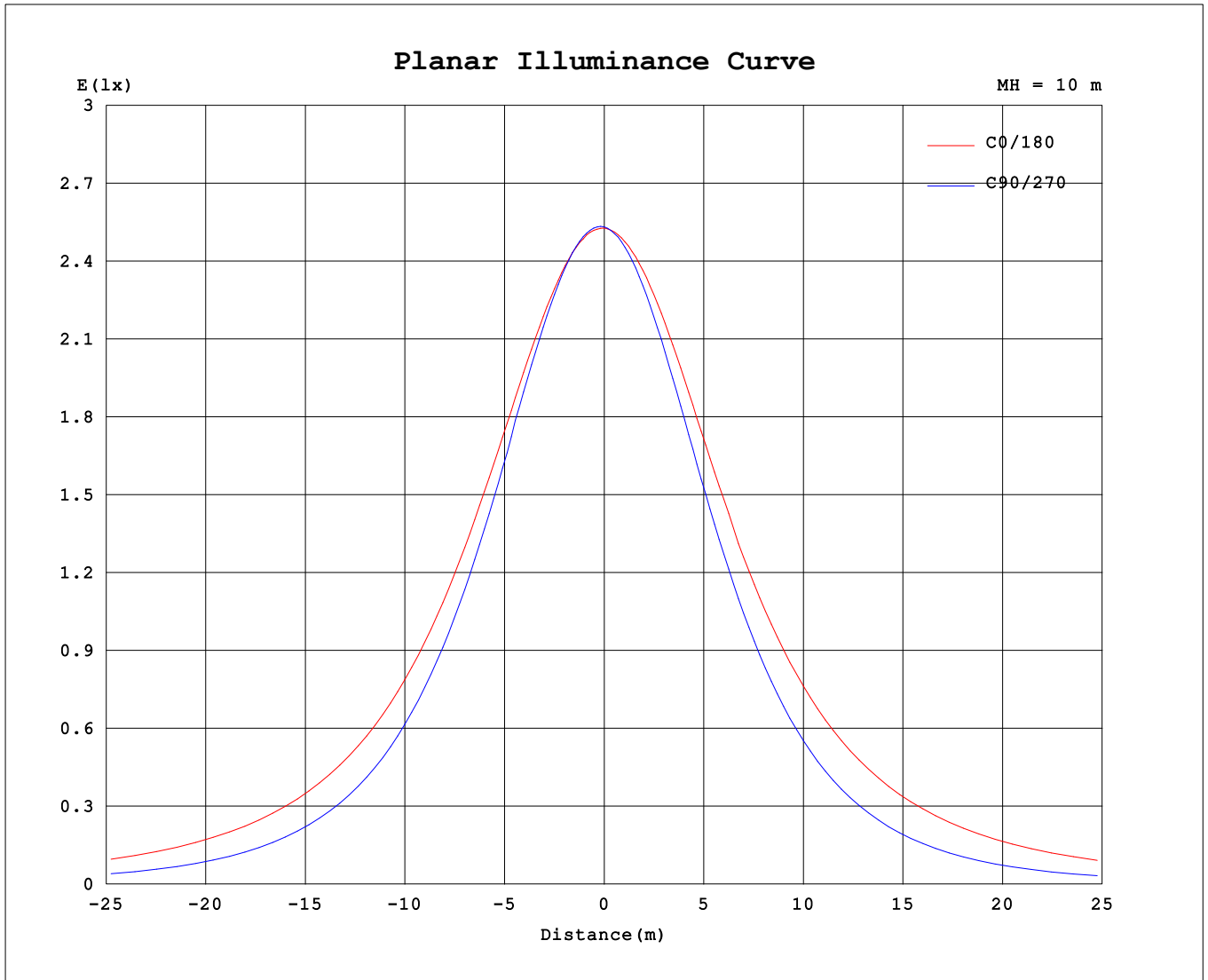
AvgL	cd/m2
L_0~180 (65) av	4400
L_0~180 (75) av	6434
L_0~180 (85) av	16709
L_90~270 (65) av	1970
L_90~270 (75) av	1550
L_90~270 (85) av	1095
L_45 (65) av	2876
L_45 (75) av	3372
L_45 (85) av	6921

Standard: GB/T 29293-2012

C Range: 0 - 360DEG
 C Interval: 90.0DEG
 Test Speed: HIGH
 Temperature:25.3℃
 Operators:DAMIN
 Test Date:04 February 2026

γ Range: 0 - 180DEG
 γ Interval: 1.0DEG
 Test System:EVERFINE GO-2000B_V1 SYSTEM V2.00.459
 Humidity:65.0%
 Test Distance:7.380m [K=1.0000]
 Remarks:

Planar Illuminance Curve



C Range: 0 - 360DEG
 C Interval: 90.0DEG
 Test Speed: HIGH
 Temperature: 25.3 °C
 Operators: DAMIN
 Test Date: 04 February 2026

γ Range: 0 - 180DEG
 γ Interval: 1.0DEG
 Test System: EVERFINE GO-2000B_V1 SYSTEM V2.00.459
 Humidity: 65.0%
 Test Distance: 7.380m [K=1.0000]
 Remarks:

LUMINOUS DISTRIBUTION INTENSITY DATA

Test:U:120.03V I:0.1459A P:16.474W PF:0.9407 Freq:59.98Hz Lamp Flux:1180.6x1 lm		
NAME: WS14-033B-金色 16W 35K	TYPE:	WEIGHT:
SPEC.:	DIM.:	SERIAL No.: 1
MFR.: EVERFINE	SUR.:	Shielding Angle:

Table--1

UNIT: cd

C (DEG) \ γ (DEG)	0	90	180	270															
0	253	253	253	253															
5	253	254	252	250															
10	252	252	250	245															
15	251	248	248	238															
20	248	241	245	229															
25	245	232	241	217															
30	241	220	236	205															
35	236	207	229	190															
40	230	191	223	174															
45	223	174	216	156															
50	215	156	208	138															
55	207	135	200	118															
60	199	114	191	96.9															
65	190	91.0	182	75.5															
70	180	68.2	173	54.4															
75	170	46.2	163	34.0															
80	160	26.6	152	16.5															
85	150	12.3	141	6.79															
90	138	6.20	130	5.24															
95	123	5.98	111	4.12															
100	87.1	6.96	58.1	3.88															
105	63.4	8.05	62.7	4.28															
110	83.3	9.34	76.7	4.96															
115	76.0	10.4	69.2	5.83															
120	68.9	11.6	62.0	6.30															
125	61.8	12.8	54.9	6.25															
130	55.2	13.9	48.7	4.86															
135	49.1	15.0	43.2	4.32															
140	43.3	16.1	37.8	5.54															
145	38.2	16.9	27.9	5.35															
150	17.4	17.8	14.7	4.47															
155	15.6	18.5	14.0	4.54															
160	14.8	17.8	13.5	4.64															
165	16.3	16.1	15.2	4.78															
170	15.5	15.1	13.7	6.23															
175	12.3	15.7	13.1	9.92															
180	13.8	13.7	13.8	13.7															

C Range: 0 - 360DEG
 C Interval: 90.0DEG
 Test Speed: HIGH
 Temperature:25.3℃
 Operators:DAMIN
 Test Date:04 February 2026

γ Range: 0 - 180DEG
 γ Interval: 1.0DEG
 Test System:EVERFINE GO-2000B_V1 SYSTEM V2.00.459
 Humidity:65.0%
 Test Distance:7.380m [K=1.0000]
 Remarks: