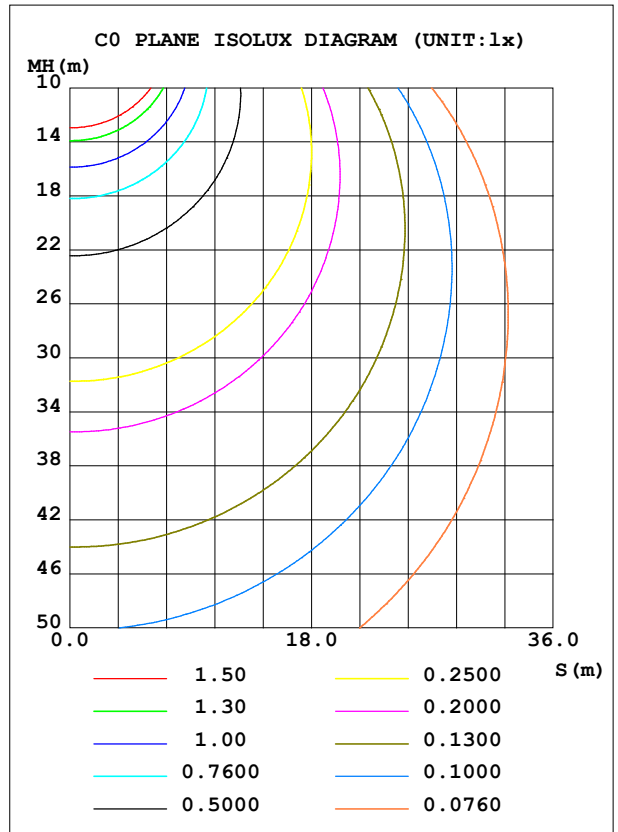
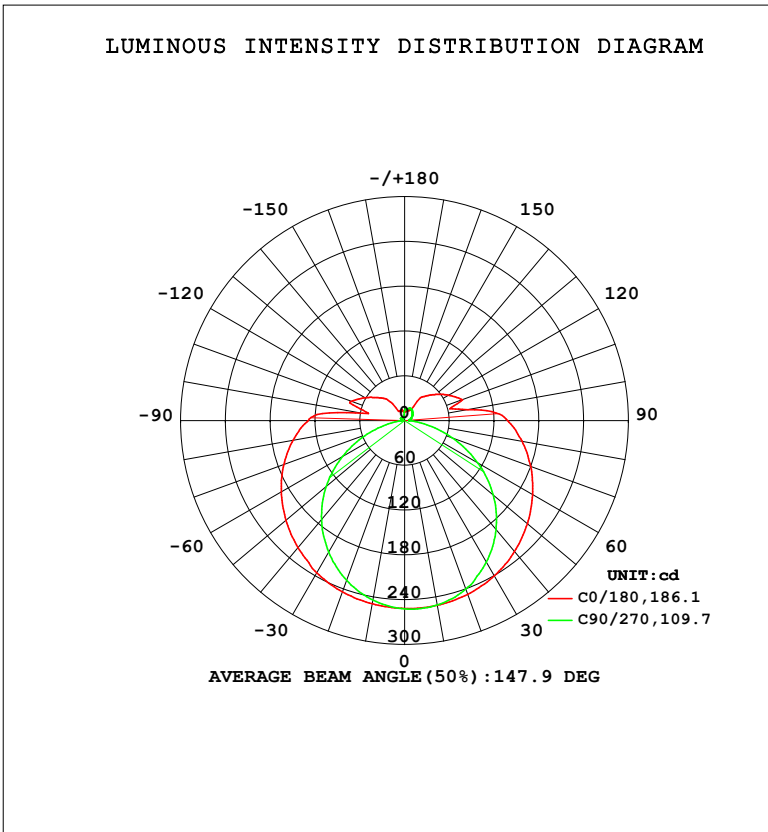


LUMINAIRE PHOTOMETRIC TEST REPORT

Test:U:120.07V I:0.1466A P:16.575W PF:0.9419 Freq:59.98Hz Lamp Flux:1175.39x1 lm		
NAME: WS14-033B-金色 16W 40K	TYPE:	WEIGHT:
SPEC.:	DIM.:	SERIAL No.: 1
MFR.: EVERFINE	SUR.:	Shielding Angle:

DATA OF LAMP		PHOTOMETRIC DATA				Eff: 70.91 lm/W
MODEL	4000K	I <sub>max</sub> (cd)	252.9	S/MH (C0/180)	1.40	
NOMINAL POWER (W)	16	LOR (%)	100.0	S/MH (C90/270)	1.21	
RATED VOLTAGE (V)	120	TOTAL FLUX (lm)	1175.4	η UP, DN (C0-180)	10.3, 42.1	
NOMINAL FLUX (lm)	1175.39	CIE CLASS	SEMI-D.	η UP, DN (C180-360)	8.3, 39.4	
LAMPS INSIDE	1	η up (%)	18.6	CIBSE SHR NOM	1.50	
TEST VOLTAGE (V)	120	η down (%)	81.4	CIBSE SHR MAX	1.50	



C Range: 0 - 360DEG  
 C Interval: 90.0DEG  
 Test Speed: HIGH  
 Temperature: 25.3 °C  
 Operators: DAMIN  
 Test Date: 04 February 2026

γ Range: 0 - 180DEG  
 γ Interval: 1.0DEG  
 Test System: EVERFINE GO-2000B\_V1 SYSTEM V2.00.459  
 Humidity: 65.0%  
 Test Distance: 7.380m [K=1.0000]  
 Remarks:

ZONAL FLUX DIAGRAM

ZONAL FLUX DIAGRAM:

$\gamma$	C0	C90	C180	C270				$\gamma$	$\Phi$ zone	$\Phi$ total	%lum,lamp
10	251.4	251.0	249.2	244.2				0- 10	23.91	23.91	2.03,2.03
20	247.7	240.3	244.2	227.6				10- 20	69.30	93.20	7.93,7.93
30	240.4	219.1	235.6	203.8				20- 30	107.5	200.7	17.1,17.1
40	229.1	190.7	222.2	173.1				30- 40	134.5	335.3	28.5,28.5
50	214.9	155.0	207.6	137.4				40- 50	148.1	483.4	41.1,41.1
60	198.1	113.2	190.8	95.86				50- 60	147.2	630.5	53.6,53.6
70	179.8	68.05	172.4	53.50				60- 70	132.8	763.3	64.9,64.9
80	159.7	26.55	151.8	16.15				70- 80	108.9	872.3	74.2,74.2
90	138.0	6.177	129.4	5.384				80- 90	85.03	957.3	81.4,81.4
100	86.35	6.885	57.30	3.883				90-100	63.59	1021	86.9,86.9
110	82.62	9.244	76.10	4.945				100-110	39.16	1060	90.2,90.2
120	68.42	11.55	61.57	6.259				110-120	39.82	1100	93.6,93.6
130	54.75	13.80	48.33	4.840				120-130	30.27	1130	96.2,96.2
140	42.93	15.92	37.53	5.502				130-140	21.61	1152	98,98
150	17.14	17.66	14.49	4.451				140-150	12.83	1165	99.1,99.1
160	14.64	17.60	13.30	4.629				150-160	6.040	1171	99.6,99.6
170	15.38	14.88	13.53	6.126				160-170	3.582	1174	99.9,99.9
180	13.65	13.49	13.63	13.50				170-180	1.188	1175	100,100
DEG	LUMINOUS INTENSITY:cd								UNIT:lm		

Conical surface Flux(90deg): 408.5 lm

%lum = 34.8%

%lamp = 34.8%

Conical surface Flux(120deg): 630.52 lm

%lum = 53.6%

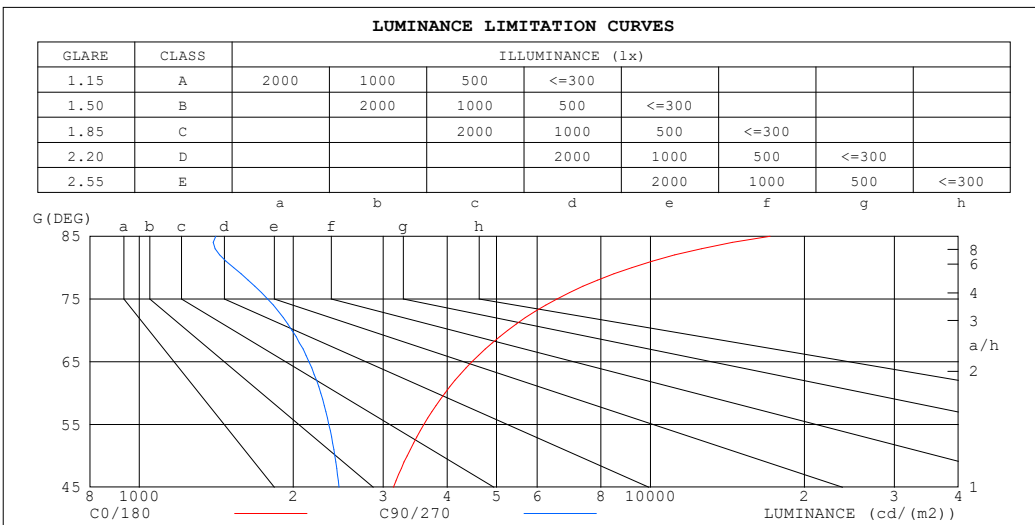
%lamp = 53.6%

C Range: 0 - 360DEG  
 C Interval: 90.0DEG  
 Test Speed: HIGH  
 Temperature:25.3°C  
 Operators:DAMIN  
 Test Date:04 February 2026

$\gamma$  Range: 0 - 180DEG  
 $\gamma$  Interval: 1.0DEG  
 Test System:EVERFINE GO-2000B\_V1 SYSTEM V2.00.459  
 Humidity:65.0%  
 Test Distance:7.380m [K=1.0000]  
 Remarks:

**LUMINANCE LIMITATION CURVES**

Test:U:120.07V I:0.1466A P:16.575W PF:0.9419 Freq:59.98Hz Lamp Flux:1175.39x1 lm		
NAME: WS14-033B-金色 16W 40K	TYPE:	WEIGHT:
SPEC.:	DIM.:	SERIAL No.: 1
MFR.: EVERFINE	SUR.:	Shielding Angle:



LUMINANCE cd/(m2)		
G (DEG)	C0/180	C90/270
85	17140	1411
80	9199	1529
75	6567	1782
70	5258	1990
65	4474	2147
60	3962	2264
55	3603	2349
50	3343	2412
45	3143	2457

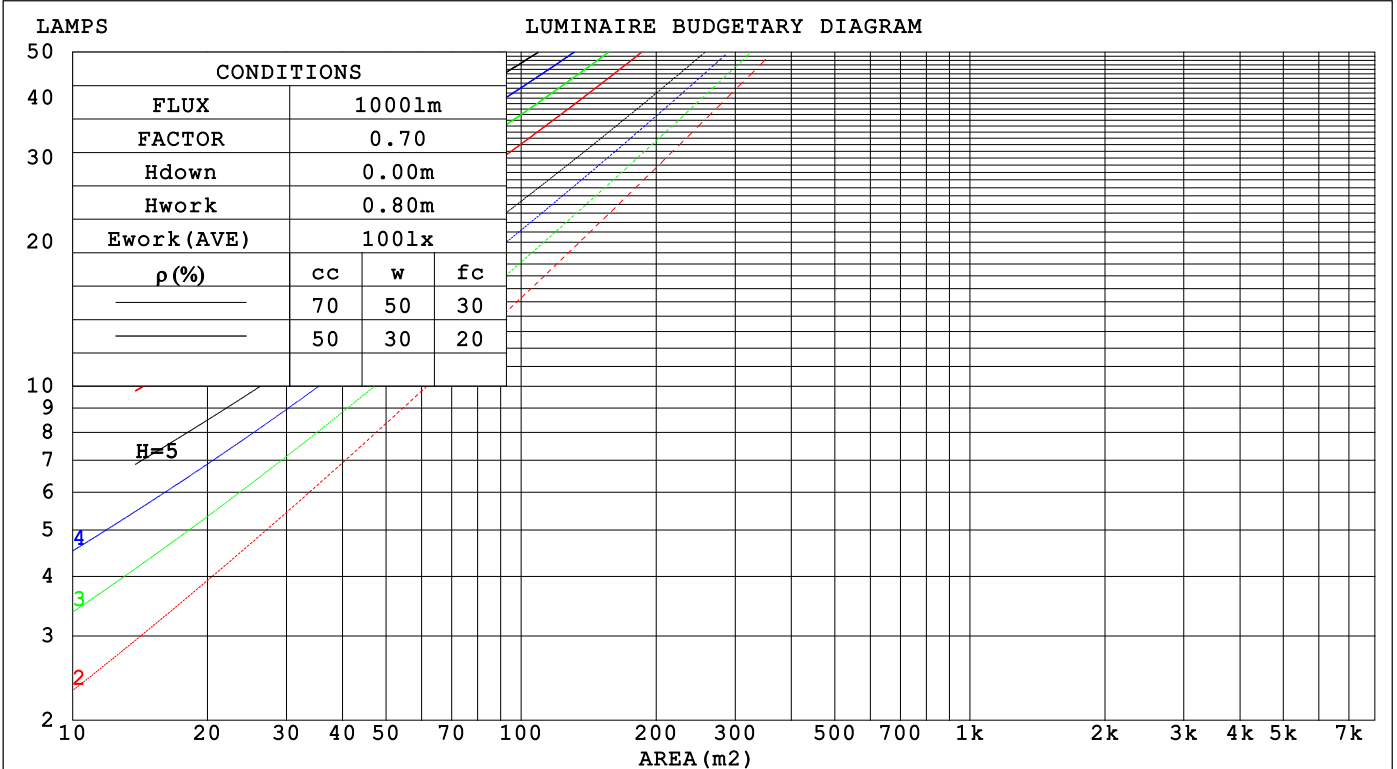
C Range: 0 - 360DEG  
 C Interval: 90.0DEG  
 Test Speed: HIGH  
 Temperature:25.3℃  
 Operators:DAMIN  
 Test Date:04 February 2026

γ Range: 0 - 180DEG  
 γ Interval: 1.0DEG  
 Test System:EVERFINE GO-2000B\_V1 SYSTEM V2.00.459  
 Humidity:65.0%  
 Test Distance:7.380m [K=1.0000]  
 Remarks:

CU AND LUMINAIRE BUDGETARY ESTIMATE DIAGRAM

Test:U:120.07V I:0.1466A P:16.575W PF:0.9419 Freq:59.98Hz Lamp Flux:1175.39x1 lm		
NAME: WS14-033B-金色 16W 40K	TYPE:	WEIGHT:
SPEC.:	DIM.:	SERIAL No.: 1
MFR.: EVERFINE	SUR.:	Shielding Angle:

pcc	80%			70%			50%			30%			10%			0
pw	50%	30%	10%	50%	30%	10%	50%	30%	10%	50%	30%	10%	50%	30%	10%	0
pfc	20%			20%			20%			20%			20%			0
RCR	RCR:Room Cavity Ratio      Coefficients of Utilization(CU)															
0.0	1.15	1.15	1.15	1.10	1.10	1.10	1.01	1.01	1.01	.93	.93	.93	.85	.85	.85	.81
1.0	.96	.90	.86	.92	.87	.82	.84	.80	.76	.77	.74	.71	.70	.68	.65	.62
2.0	.82	.74	.67	.78	.71	.65	.72	.66	.61	.66	.61	.57	.60	.56	.53	.49
3.0	.71	.62	.55	.68	.60	.53	.62	.55	.50	.57	.51	.47	.52	.47	.44	.40
4.0	.62	.53	.46	.60	.51	.44	.55	.48	.42	.50	.44	.39	.46	.41	.37	.34
5.0	.55	.46	.39	.53	.44	.38	.49	.41	.36	.45	.38	.34	.41	.36	.31	.29
6.0	.49	.40	.33	.48	.39	.33	.44	.36	.31	.40	.34	.29	.37	.32	.27	.25
7.0	.45	.36	.29	.43	.34	.28	.40	.32	.27	.37	.30	.26	.34	.28	.24	.22
8.0	.41	.32	.26	.39	.31	.25	.36	.29	.24	.33	.27	.23	.31	.26	.21	.19
9.0	.37	.29	.23	.36	.28	.22	.33	.26	.21	.31	.25	.20	.29	.23	.19	.17
10.0	.34	.26	.21	.33	.25	.20	.31	.24	.19	.28	.23	.18	.26	.21	.17	.15



C Range: 0 - 360DEG  
 C Interval: 90.0DEG  
 Test Speed: HIGH  
 Temperature:25.3℃  
 Operators:DAMIN  
 Test Date:04 February 2026

γ Range: 0 - 180DEG  
 γ Interval: 1.0DEG  
 Test System:EVERFINE GO-2000B\_V1 SYSTEM V2.00.459  
 Humidity:65.0%  
 Test Distance:7.380m [K=1.0000]  
 Remarks:

WEC AND CCEC

Test:U:120.07V I:0.1466A P:16.575W PF:0.9419 Freq:59.98Hz Lamp Flux:1175.39x1 lm		
NAME: WS14-033B-金色 16W 40K	TYPE:	WEIGHT:
SPEC.:	DIM.:	SERIAL No.: 1
MFR.: EVERFINE	SUR.:	Shielding Angle:

ρ <sub>CC</sub>	80%			70%			50%			30%			10%			0
ρ <sub>w</sub>	50%	30%	10%	50%	30%	10%	50%	30%	10%	50%	30%	10%	50%	30%	10%	0
ρ <sub>fc</sub>	20%			20%			20%			20%			20%			0
RCR	RCR:Room Cavity Ratio						Wall Exitance Coefficients(WEC)									
0.0																
1.0	.382	.217	.069	.369	.210	.067	.345	.198	.063	.323	.186	.060	.302	.175	.056	
2.0	.331	.182	.056	.320	.176	.054	.298	.166	.051	.278	.156	.049	.259	.147	.046	
3.0	.295	.157	.047	.284	.152	.046	.265	.143	.044	.246	.135	.041	.229	.127	.039	
4.0	.266	.138	.041	.256	.134	.040	.238	.126	.038	.222	.119	.036	.206	.112	.034	
5.0	.242	.123	.036	.233	.120	.035	.217	.113	.033	.202	.106	.032	.187	.100	.030	
6.0	.221	.111	.032	.214	.108	.031	.199	.102	.030	.185	.096	.028	.172	.091	.027	
7.0	.204	.101	.029	.197	.098	.028	.184	.093	.027	.171	.088	.025	.159	.083	.024	
8.0	.190	.093	.026	.183	.090	.025	.171	.085	.024	.159	.080	.023	.148	.076	.022	
9.0	.177	.085	.024	.171	.083	.023	.159	.079	.022	.148	.074	.021	.138	.070	.020	
10.0	.165	.079	.022	.160	.077	.022	.149	.073	.021	.139	.069	.020	.130	.065	.019	

ρ <sub>CC</sub>	80%			70%			50%			30%			10%			0
ρ <sub>w</sub>	50%	30%	10%	50%	30%	10%	50%	30%	10%	50%	30%	10%	50%	30%	10%	0
ρ <sub>fc</sub>	20%			20%			20%			20%			20%			0
RCR	RCR:Room Cavity Ratio						Ceiling Cavity Exitance Coefficients(CCEC)									
0.0																
1.0	.332	.332	.332	.284	.284	.284	.194	.194	.194	.111	.111	.111	.036	.036	.036	
2.0	.321	.275	.237	.275	.237	.205	.188	.164	.143	.109	.095	.084	.035	.031	.027	
3.0	.314	.259	.215	.269	.223	.186	.185	.155	.131	.107	.091	.077	.034	.029	.025	
4.0	.306	.246	.201	.262	.213	.174	.180	.148	.123	.104	.087	.073	.034	.028	.024	
5.0	.298	.236	.191	.256	.205	.166	.176	.143	.117	.102	.084	.070	.033	.027	.023	
6.0	.291	.229	.184	.250	.198	.160	.172	.139	.113	.100	.081	.067	.032	.027	.022	
7.0	.284	.222	.179	.244	.192	.156	.169	.135	.110	.098	.079	.066	.032	.026	.022	
8.0	.277	.216	.175	.238	.188	.152	.165	.132	.108	.096	.078	.064	.031	.025	.021	
9.0	.271	.212	.172	.233	.184	.150	.162	.129	.106	.094	.076	.063	.030	.025	.021	
10.0	.265	.207	.169	.228	.180	.148	.158	.127	.105	.092	.075	.063	.030	.025	.021	

C Range: 0 - 360DEG  
 C Interval: 90.0DEG  
 Test Speed: HIGH  
 Temperature:25.3℃  
 Operators:DAMIN  
 Test Date:04 February 2026

γ Range: 0 - 180DEG  
 γ Interval: 1.0DEG  
 Test System:EVERFINE GO-2000B\_V1 SYSTEM V2.00.459  
 Humidity:65.0%  
 Test Distance:7.380m [K=1.0000]  
 Remarks:

**UGR(Unified Glare Rating) Table**

Test:U:120.07V I:0.1466A P:16.575W PF:0.9419 Freq:59.98Hz										
Lamp Flux:1175.39x1 lm										
NAME: WS14-033B-金色 16W 40K					TYPE:			WEIGHT:		
SPEC.:					DIM.:			SERIAL No.: 1		
MFR.: EVERFINE					SUR.:			Shielding Angle:		
ceiling/cavity	0.7	0.7	0.5	0.5	0.3	0.7	0.7	0.5	0.5	0.3
walls	0.5	0.3	0.5	0.3	0.3	0.5	0.3	0.5	0.3	0.3
working plane	0.2	0.2	0.2	0.2	0.2	0.2	0.2	0.2	0.2	0.2
Room dimensions	Viewed crosswise					Viewed endwise				
x = 2H y = 2H	16.1	17.4	16.6	17.9	18.5	14.1	15.5	14.6	16.0	16.6
3H	18.8	20.1	19.4	20.7	21.3	15.6	16.9	16.2	17.4	18.0
4H	20.4	21.6	21.0	22.2	22.8	16.2	17.4	16.8	18.0	18.6
6H	22.2	23.3	22.8	23.9	24.6	16.6	17.7	17.2	18.3	19.0
8H	23.2	24.3	23.8	24.9	25.5	16.7	17.8	17.3	18.4	19.1
12H	24.3	25.4	24.9	26.0	26.7	16.8	17.9	17.4	18.5	19.1
4H 2H	16.6	17.8	17.2	18.3	19.0	15.2	16.4	15.7	16.9	17.6
3H	19.6	20.6	20.2	21.2	21.9	16.9	18.0	17.6	18.6	19.3
4H	21.3	22.3	21.9	22.9	23.6	17.7	18.7	18.4	19.3	20.0
6H	23.3	24.1	23.9	24.8	25.5	18.4	19.2	19.0	19.9	20.6
8H	24.4	25.2	25.0	25.8	26.6	18.6	19.4	19.2	20.0	20.8
12H	25.7	26.4	26.4	27.1	27.9	18.7	19.5	19.4	20.2	21.0
8H 4H	21.6	22.4	22.2	23.0	23.8	18.7	19.5	19.4	20.2	20.9
6H	23.8	24.5	24.5	25.2	26.0	19.7	20.4	20.4	21.1	21.9
8H	25.1	25.7	25.8	26.4	27.3	20.1	20.7	20.8	21.4	22.3
12H	26.7	27.2	27.4	27.9	28.8	20.5	21.0	21.2	21.8	22.6
12H 4H	21.6	22.3	22.3	23.0	23.8	19.0	19.8	19.7	20.4	21.2
6H	23.9	24.5	24.6	25.2	26.0	20.2	20.8	20.9	21.5	22.4
8H	25.3	25.8	26.0	26.5	27.4	20.8	21.3	21.5	22.1	22.9
Variations with the observer position at spacings(CIE Pub.117):										
S = 1.0H	+ 0.1 / - 0.1					+ 0.1 / - 0.1				
1.5H	+ 0.2 / - 0.2					+ 0.2 / - 0.3				
2.0H	+ 0.2 / - 0.3					+ 0.3 / - 0.5				

CIE Pub.117, 1175 lm Total Lamp Luminous Flux Correct (8log(F/F0) = 0.6)  
 Area: 0.1 m2

C Range: 0 - 360DEG	γ Range: 0 - 180DEG
C Interval: 90.0DEG	γ Interval: 1.0DEG
Test Speed: HIGH	Test System:EVERFINE GO-2000B_V1 SYSTEM V2.00.459
Temperature:25.3℃	Humidity:65.0%
Operators:DAMIN	Test Distance:7.380m [K=1.0000]
Test Date:04 February 2026	Remarks:

**UTILIZATION FACTORS TABLE**

Test:U:120.07V I:0.1466A P:16.575W PF:0.9419 Freq:59.98Hz Lamp Flux:1175.39x1 lm		
NAME: WS14-033B-金色 16W 40K	TYPE:	WEIGHT:
SPEC.:	DIM.:	SERIAL No.: 1
MFR.: EVERFINE	SUR.:	Shielding Angle:

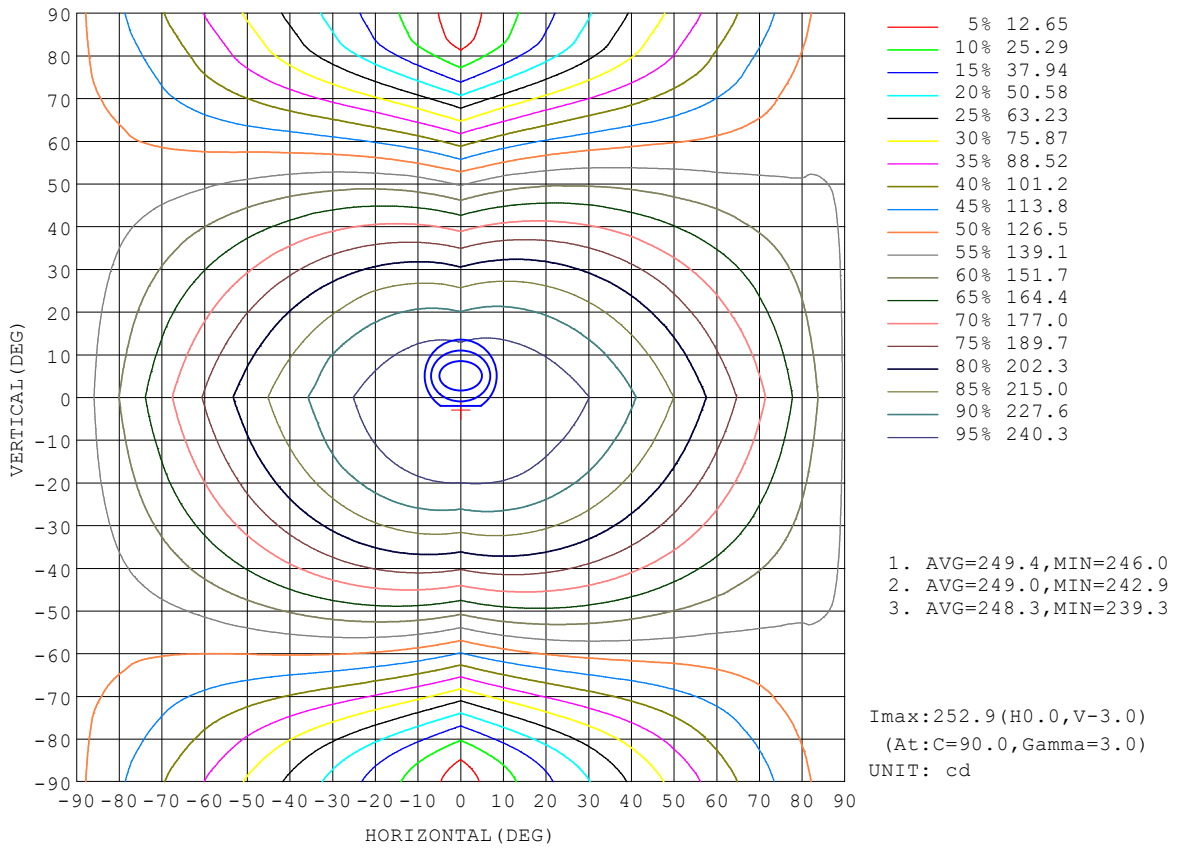
REFLECTANCE										
Ceiling	0.8	0.8	0.8	0.7	0.7	0.7	0.5	0.5	0.5	0
Walls	0.7	0.5	0.3	0.7	0.5	0.3	0.7	0.5	0.3	0
Working plane	0.2	0.2	0.2	0.2	0.2	0.2	0.2	0.2	0.2	0
ROOM INDEX	UTILIZATION FACTORS (PERCENT) $k(RI) \times RCR = 5$									
k = 0.60	48	35	28	47	35	28	45	34	27	21
0.80	57	44	36	55	43	36	52	42	35	27
1.00	65	52	43	63	51	43	59	51	42	33
1.25	72	59	51	69	58	50	65	55	48	38
1.50	77	65	56	74	63	55	69	60	53	42
2.00	84	73	65	81	71	63	75	67	60	49
2.50	89	78	70	85	76	69	79	71	65	52
3.00	92	83	76	89	80	74	82	75	69	56
4.00	97	89	83	93	86	80	86	80	75	61
5.00	100	93	87	96	90	84	88	83	79	64
ROOM INDEX	UF(total)									Direct
According to DIN EN 13032-2 2004			Suspended				SHRNOM = 1.25			

C Range: 0 - 360DEG  
 C Interval: 90.0DEG  
 Test Speed: HIGH  
 Temperature:25.3℃  
 Operators:DAMIN  
 Test Date:04 February 2026

$\gamma$  Range: 0 - 180DEG  
 $\gamma$  Interval: 1.0DEG  
 Test System:EVERFINE GO-2000B\_V1 SYSTEM V2.00.459  
 Humidity:65.0%  
 Test Distance:7.380m [K=1.0000]  
 Remarks:

ISOCANDELA DIAGRAM

Test:U:120.07V I:0.1466A P:16.575W PF:0.9419 Freq:59.98Hz Lamp Flux:1175.39x1 lm		
NAME: WS14-033B-金色 16W 40K	TYPE:	WEIGHT:
SPEC.:	DIM.:	SERIAL No.: 1
MFR.: EVERFINE	SUR.:	Shielding Angle:

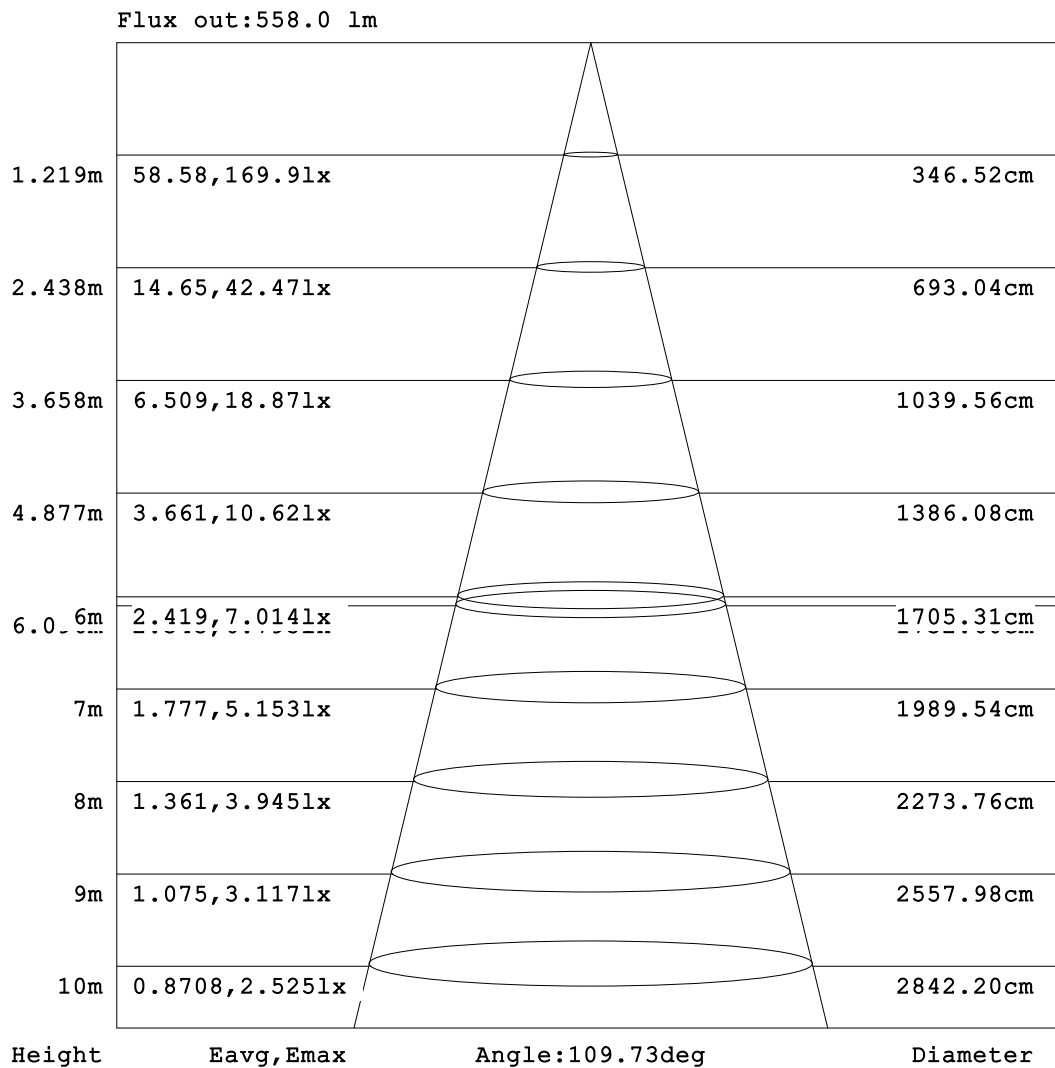


C Range: 0 - 360DEG  
C Interval: 90.0DEG  
Test Speed: HIGH  
Temperature: 25.3 °C  
Operators: DAMIN  
Test Date: 04 February 2026

γ Range: 0 - 180DEG  
γ Interval: 1.0DEG  
Test System: EVERFINE GO-2000B\_V1 SYSTEM V2.00.459  
Humidity: 65.0%  
Test Distance: 7.380m [K=1.0000]  
Remarks:

**AAI Figure**

Test:U:120.07V I:0.1466A P:16.575W PF:0.9419 Freq:59.98Hz Lamp Flux:1175.39x1 lm		
NAME: WS14-033B-金色 16W 40K	TYPE:	WEIGHT:
SPEC.:	DIM.:	SERIAL No.: 1
MFR.: EVERFINE	SUR.:	Shielding Angle:



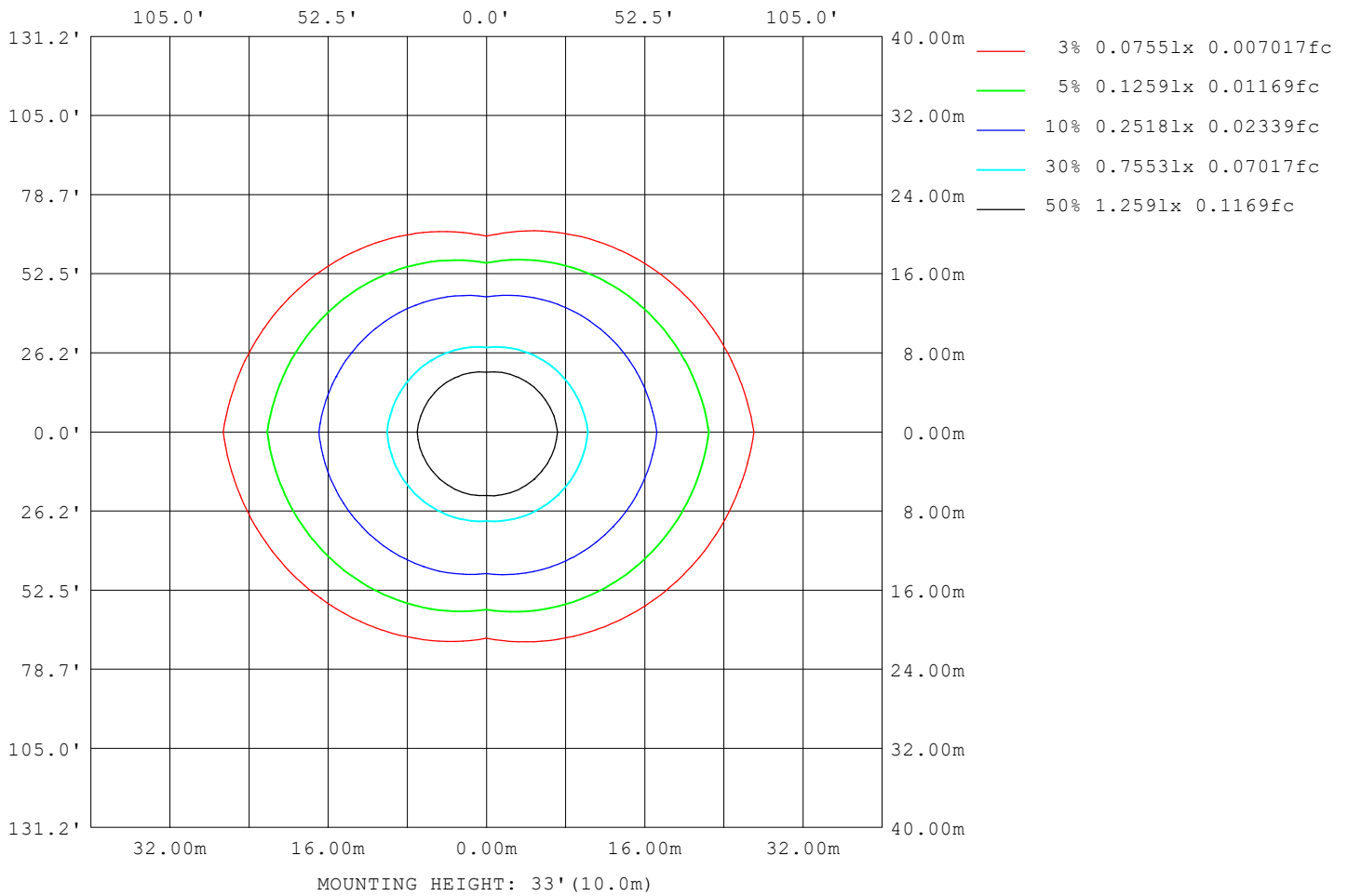
Note:The Curves indicate the illuminated area and the average illumination when the luminaire is at different distance.

C Range: 0 - 360DEG  
C Interval: 90.0DEG  
Test Speed: HIGH  
Temperature:25.3°C  
Operators:DAMIN  
Test Date:04 February 2026

γ Range: 0 - 180DEG  
γ Interval: 1.0DEG  
Test System:EVERFINE GO-2000B\_V1 SYSTEM V2.00.459  
Humidity:65.0%  
Test Distance:7.380m [K=1.0000]  
Remarks:

**ISOLUX DIAGRAM**

Test:U:120.07V I:0.1466A P:16.575W PF:0.9419 Freq:59.98Hz Lamp Flux:1175.39x1 lm		
NAME: WS14-033B-金色 16W 40K	TYPE:	WEIGHT:
SPEC.:	DIM.:	SERIAL No.: 1
MFR.: EVERFINE	SUR.:	Shielding Angle:



C Range: 0 - 360DEG  
 C Interval: 90.0DEG  
 Test Speed: HIGH  
 Temperature:25.3 °C  
 Operators:DAMIN  
 Test Date:04 February 2026

γ Range: 0 - 180DEG  
 γ Interval: 1.0DEG  
 Test System:EVERFINE GO-2000B\_V1 SYSTEM V2.00.459  
 Humidity:65.0%  
 Test Distance:7.380m [K=1.0000]  
 Remarks:

**LED Avg.L Report**

Test:U:120.07V I:0.1466A P:16.575W PF:0.9419 Freq:59.98Hz Lamp Flux:1175.39x1 lm		
NAME: WS14-033B-金色 16W 40K	TYPE:	WEIGHT:
SPEC.:	DIM.:	SERIAL No.: 1
MFR.: EVERFINE	SUR.:	Shielding Angle:

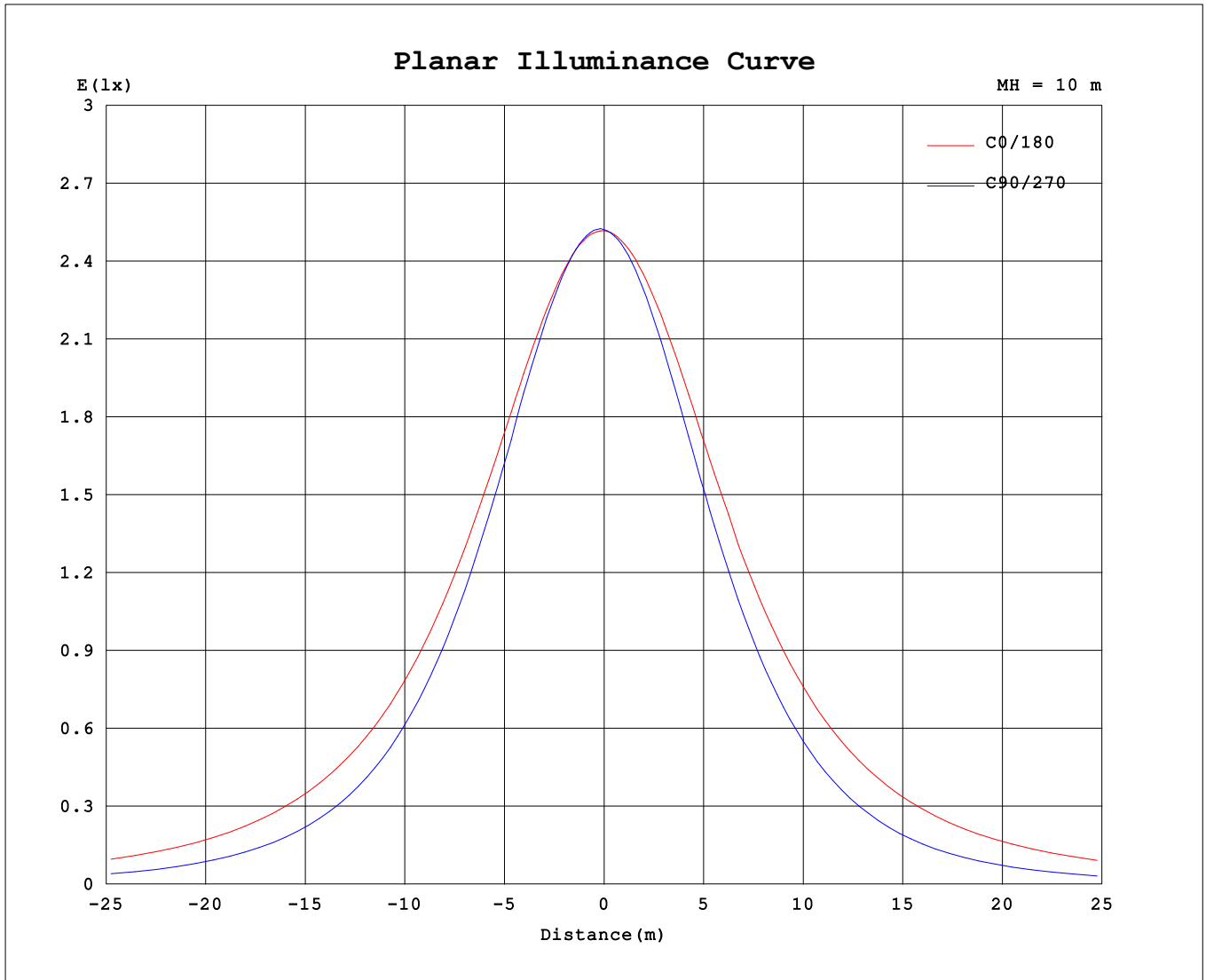
AvgL	cd/m2
L_0~180 (65) av	4388
L_0~180 (75) av	6417
L_0~180 (85) av	16667
L_90~270 (65) av	1955
L_90~270 (75) av	1533
L_90~270 (85) av	1106
L_45 (65) av	2862
L_45 (75) av	3355
L_45 (85) av	6912

Standard: GB/T 29293-2012

C Range: 0 - 360DEG  
 C Interval: 90.0DEG  
 Test Speed: HIGH  
 Temperature:25.3℃  
 Operators:DAMIN  
 Test Date:04 February 2026

γ Range: 0 - 180DEG  
 γ Interval: 1.0DEG  
 Test System:EVERFINE GO-2000B\_V1 SYSTEM V2.00.459  
 Humidity:65.0%  
 Test Distance:7.380m [K=1.0000]  
 Remarks:

Planar Illuminance Curve



C Range: 0 - 360DEG  
 C Interval: 90.0DEG  
 Test Speed: HIGH  
 Temperature: 25.3 °C  
 Operators: DAMIN  
 Test Date: 04 February 2026

γ Range: 0 - 180DEG  
 γ Interval: 1.0DEG  
 Test System: EVERFINE GO-2000B\_V1 SYSTEM V2.00.459  
 Humidity: 65.0%  
 Test Distance: 7.380m [K=1.0000]  
 Remarks:

LUMINOUS DISTRIBUTION INTENSITY DATA

Test:U:120.07V I:0.1466A P:16.575W PF:0.9419 Freq:59.98Hz Lamp Flux:1175.39x1 lm		
NAME: WS14-033B-金色 16W 40K	TYPE:	WEIGHT:
SPEC.:	DIM.:	SERIAL No.: 1
MFR.: EVERFINE	SUR.:	Shielding Angle:

Table--1

UNIT: cd

C (DEG) \ γ (DEG)	0	90	180	270															
0	252	252	252	252															
5	252	253	251	249															
10	251	251	249	244															
15	250	247	247	237															
20	248	240	244	228															
25	244	230	240	217															
30	240	219	236	204															
35	235	206	228	189															
40	229	191	222	173															
45	222	174	215	156															
50	215	155	208	137															
55	207	135	199	117															
60	198	113	191	95.9															
65	189	90.7	182	74.5															
70	180	68.0	172	53.5															
75	170	46.1	162	33.2															
80	160	26.5	152	16.2															
85	149	12.3	141	6.98															
90	138	6.18	129	5.38															
95	123	5.93	111	4.18															
100	86.3	6.89	57.3	3.88															
105	62.6	7.95	62.0	4.27															
110	82.6	9.24	76.1	4.94															
115	75.5	10.3	68.7	5.78															
120	68.4	11.5	61.6	6.26															
125	61.3	12.7	54.6	6.23															
130	54.7	13.8	48.3	4.84															
135	48.6	14.9	42.9	4.30															
140	42.9	15.9	37.5	5.50															
145	37.9	16.8	27.7	5.33															
150	17.1	17.7	14.5	4.45															
155	15.4	18.4	13.8	4.52															
160	14.6	17.6	13.3	4.63															
165	16.1	15.9	15.0	4.76															
170	15.4	14.9	13.5	6.13															
175	12.2	15.5	12.9	9.77															
180	13.6	13.5	13.6	13.5															

C Range: 0 - 360DEG  
 C Interval: 90.0DEG  
 Test Speed: HIGH  
 Temperature:25.3℃  
 Operators:DAMIN  
 Test Date:04 February 2026

γ Range: 0 - 180DEG  
 γ Interval: 1.0DEG  
 Test System:EVERFINE GO-2000B\_V1 SYSTEM V2.00.459  
 Humidity:65.0%  
 Test Distance:7.380m [K=1.0000]  
 Remarks: