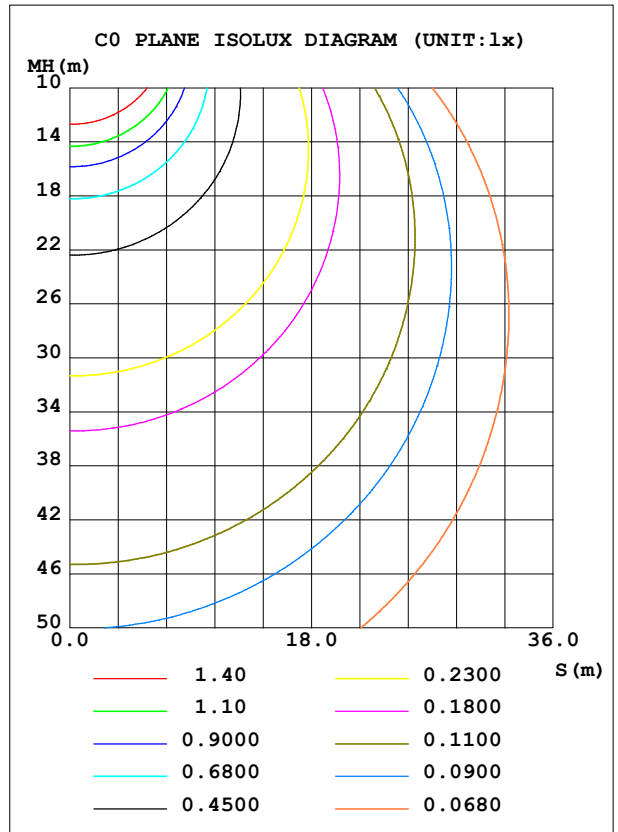
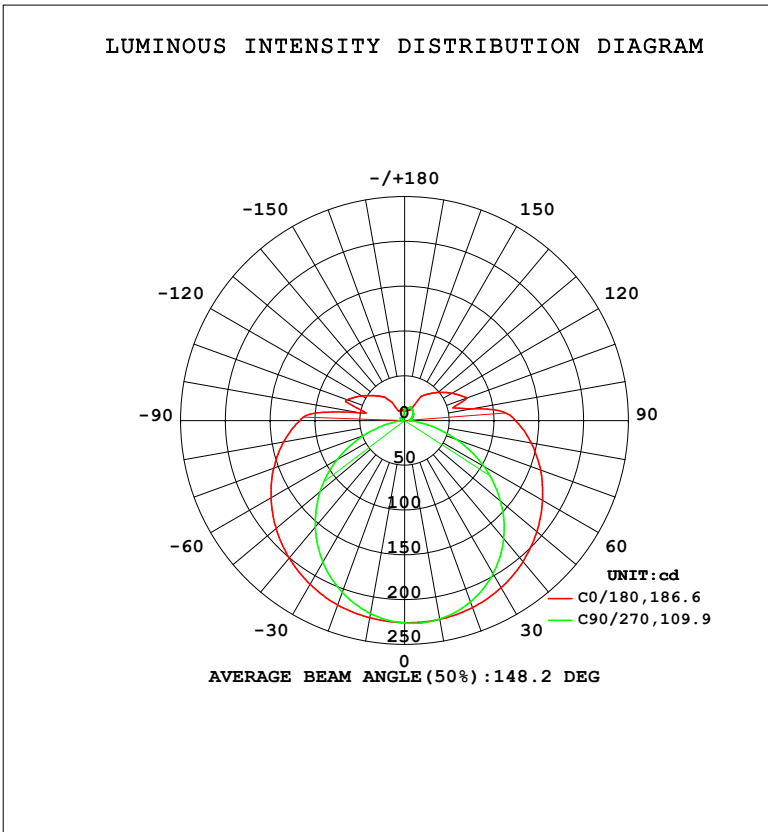


LUMINAIRE PHOTOMETRIC TEST REPORT

Test:U:120.05V I:0.1446A P:16.296W PF:0.9385 Freq:59.98Hz Lamp Flux:1057.13x1 lm		
NAME: WS14-033B-金色 16W 50K	TYPE:	WEIGHT:
SPEC.:	DIM.:	SERIAL No.: 1
MFR.: EVERFINE	SUR.:	Shielding Angle:

DATA OF LAMP		PHOTOMETRIC DATA				Eff: 64.87 lm/W
MODEL	5000K	I _{max} (cd)	226.7	S/MH (C0/180)	1.41	
NOMINAL POWER (W)	16	LOR (%)	100.0	S/MH (C90/270)	1.21	
RATED VOLTAGE (V)	120	TOTAL FLUX (lm)	1057.1	η UP, DN (C0-180)	10.2, 42.1	
NOMINAL FLUX (lm)	1057.13	CIE CLASS	SEMI-D.	η UP, DN (C180-360)	8.3, 39.4	
LAMPS INSIDE	1	η up (%)	18.5	CIBSE SHR NOM	1.50	
TEST VOLTAGE (V)	120	η down (%)	81.5	CIBSE SHR MAX	1.50	



C Range: 0 - 360DEG
 C Interval: 90.0DEG
 Test Speed: HIGH
 Temperature: 25.3 °C
 Operators: DAMIN
 Test Date: 04 February 2026

γ Range: 0 - 180DEG
 γ Interval: 1.0DEG
 Test System: EVERFINE GO-2000B_V1 SYSTEM V2.00.459
 Humidity: 65.0%
 Test Distance: 7.380m [K=1.0000]
 Remarks:

ZONAL FLUX DIAGRAM

ZONAL FLUX DIAGRAM:

γ	C0	C90	C180	C270				γ	Φ zone	Φ total	%lum,lamp
10	225.4	225.0	223.5	218.9				0- 10	21.43	21.43	2.03,2.03
20	222.1	215.4	219.0	204.0				10- 20	62.12	83.56	7.9,7.9
30	215.6	197.6	211.1	182.6				20- 30	96.47	180.0	17,17
40	205.6	172.1	200.5	155.2				30- 40	121.0	301.0	28.5,28.5
50	192.8	139.8	187.4	123.2				40- 50	133.2	434.2	41.1,41.1
60	177.8	102.1	172.2	86.73				50- 60	132.6	566.8	53.6,53.6
70	161.6	61.43	155.6	48.46				60- 70	119.7	686.5	64.9,64.9
80	143.5	23.95	137.1	14.73				70- 80	98.20	784.7	74.2,74.2
90	123.9	5.531	116.9	4.890				80- 90	76.60	861.3	81.5,81.5
100	77.47	6.174	51.05	3.523				90-100	57.25	918.5	86.9,86.9
110	74.16	8.289	68.41	4.465				100-110	35.06	953.6	90.2,90.2
120	61.38	10.38	55.34	5.639				110-120	35.77	989.4	93.6,93.6
130	49.08	12.41	43.45	4.356				120-130	27.18	1017	96.2,96.2
140	38.46	14.31	33.75	4.987				130-140	19.41	1036	98,98
150	15.17	15.88	12.89	4.026				140-150	11.51	1047	99.1,99.1
160	13.02	15.79	11.87	4.180				150-160	5.396	1053	99.6,99.6
170	13.77	13.32	12.12	5.465				160-170	3.206	1056	99.9,99.9
180	12.20	12.08	12.22	12.07				170-180	1.062	1057	100,100
DEG	LUMINOUS INTENSITY:cd								UNIT:lm		

Conical surface Flux(90deg): 366.86 lm

%lum = 34.7%

%lamp = 34.7%

Conical surface Flux(120deg): 566.78 lm

%lum = 53.6%

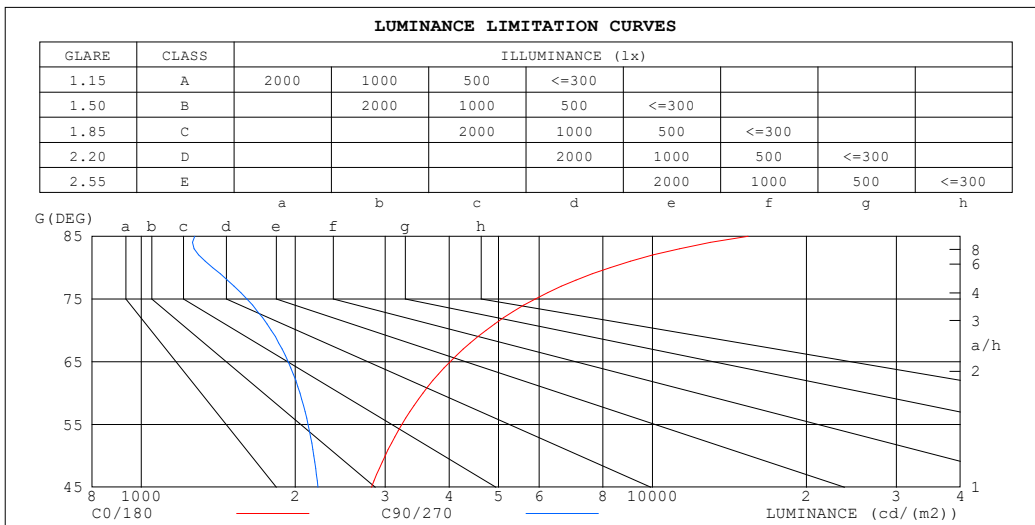
%lamp = 53.6%

C Range: 0 - 360DEG
 C Interval: 90.0DEG
 Test Speed: HIGH
 Temperature:25.3°C
 Operators:DAMIN
 Test Date:04 February 2026

γ Range: 0 - 180DEG
 γ Interval: 1.0DEG
 Test System:EVERFINE GO-2000B_V1 SYSTEM V2.00.459
 Humidity:65.0%
 Test Distance:7.380m [K=1.0000]
 Remarks:

LUMINANCE LIMITATION CURVES

Test:U:120.05V I:0.1446A P:16.296W PF:0.9385 Freq:59.98Hz Lamp Flux:1057.13x1 lm		
NAME: WS14-033B-金色 16W 50K	TYPE:	WEIGHT:
SPEC.:	DIM.:	SERIAL No.: 1
MFR.: EVERFINE	SUR.:	Shielding Angle:



LUMINANCE cd/(m2)		
G (DEG)	C0/180	C90/270
85	15385	1272
80	8265	1379
75	5897	1609
70	4724	1796
65	4018	1938
60	3556	2043
55	3235	2119
50	3000	2175
45	2821	2216

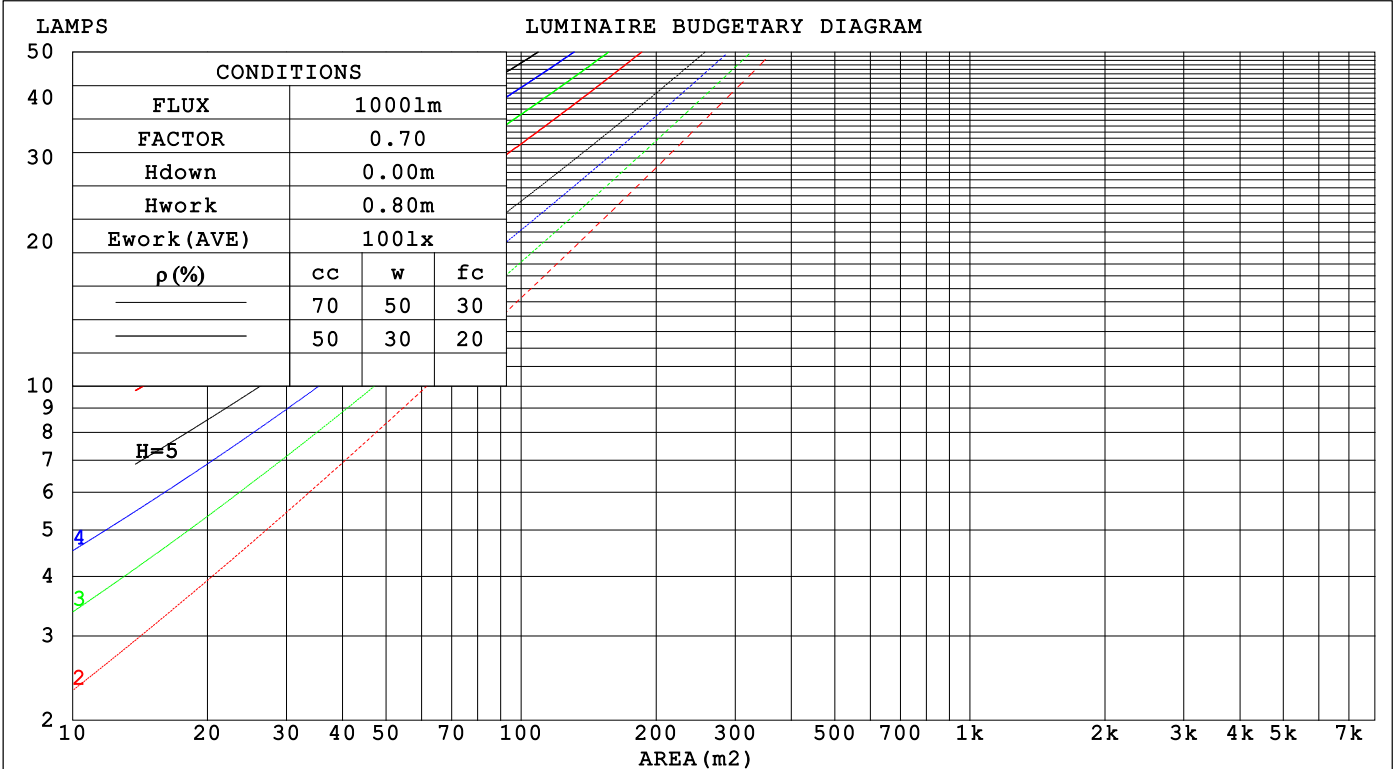
C Range: 0 - 360DEG
 C Interval: 90.0DEG
 Test Speed: HIGH
 Temperature: 25.3 °C
 Operators: DAMIN
 Test Date: 04 February 2026

γ Range: 0 - 180DEG
 γ Interval: 1.0DEG
 Test System: EVERFINE GO-2000B_V1 SYSTEM V2.00.459
 Humidity: 65.0%
 Test Distance: 7.380m [K=1.0000]
 Remarks:

CU AND LUMINAIRE BUDGETARY ESTIMATE DIAGRAM

Test:U:120.05V I:0.1446A P:16.296W PF:0.9385 Freq:59.98Hz Lamp Flux:1057.13x1 lm		
NAME: WS14-033B-金色 16W 50K	TYPE:	WEIGHT:
SPEC.:	DIM.:	SERIAL No.: 1
MFR.: EVERFINE	SUR.:	Shielding Angle:

pcc	80%			70%			50%			30%			10%			0
pw	50%	30%	10%	50%	30%	10%	50%	30%	10%	50%	30%	10%	50%	30%	10%	0
pfc	20%			20%			20%			20%			20%			0
RCR	RCR:Room Cavity Ratio Coefficients of Utilization(CU)															
0.0	1.15	1.15	1.15	1.10	1.10	1.10	1.01	1.01	1.01	.93	.93	.93	.85	.85	.85	.81
1.0	.96	.90	.86	.92	.87	.82	.84	.80	.76	.77	.74	.71	.70	.68	.65	.62
2.0	.82	.74	.67	.78	.71	.65	.72	.66	.61	.66	.61	.57	.60	.56	.53	.49
3.0	.71	.62	.55	.68	.60	.53	.62	.55	.50	.57	.51	.47	.52	.47	.44	.40
4.0	.62	.53	.46	.60	.51	.44	.55	.47	.42	.50	.44	.39	.46	.41	.37	.34
5.0	.55	.46	.39	.53	.44	.38	.49	.41	.36	.45	.38	.33	.41	.36	.31	.29
6.0	.49	.40	.33	.47	.39	.33	.44	.36	.31	.40	.34	.29	.37	.32	.27	.25
7.0	.45	.36	.29	.43	.34	.28	.40	.32	.27	.37	.30	.26	.34	.28	.24	.22
8.0	.40	.32	.26	.39	.31	.25	.36	.29	.24	.33	.27	.23	.31	.25	.21	.19
9.0	.37	.29	.23	.36	.28	.22	.33	.26	.21	.31	.25	.20	.28	.23	.19	.17
10.0	.34	.26	.21	.33	.25	.20	.31	.24	.19	.28	.22	.18	.26	.21	.17	.15



C Range: 0 - 360DEG
 C Interval: 90.0DEG
 Test Speed: HIGH
 Temperature:25.3℃
 Operators:DAMIN
 Test Date:04 February 2026

γ Range: 0 - 180DEG
 γ Interval: 1.0DEG
 Test System:EVERFINE GO-2000B_V1 SYSTEM V2.00.459
 Humidity:65.0%
 Test Distance:7.380m [K=1.0000]
 Remarks:

WEC AND CCEC

Test:U:120.05V I:0.1446A P:16.296W PF:0.9385 Freq:59.98Hz Lamp Flux:1057.13x1 lm		
NAME: WS14-033B-金色 16W 50K	TYPE:	WEIGHT:
SPEC.:	DIM.:	SERIAL No.: 1
MFR.: EVERFINE	SUR.:	Shielding Angle:

ρ _{CC}	80%			70%			50%			30%			10%			0
ρ _w	50%	30%	10%	50%	30%	10%	50%	30%	10%	50%	30%	10%	50%	30%	10%	0
ρ _{fc}	20%			20%			20%			20%			20%			0
RCR	RCR:Room Cavity Ratio						Wall Exitance Coefficients(WEC)									
0.0																
1.0	.382	.217	.069	.369	.211	.067	.345	.198	.063	.323	.186	.060	.303	.175	.057	
2.0	.332	.182	.056	.320	.176	.054	.298	.166	.052	.278	.156	.049	.260	.147	.046	
3.0	.295	.157	.047	.285	.152	.046	.265	.144	.044	.247	.135	.041	.230	.127	.039	
4.0	.266	.138	.041	.256	.134	.040	.238	.126	.038	.222	.119	.036	.206	.112	.034	
5.0	.242	.123	.036	.233	.120	.035	.217	.113	.033	.202	.106	.032	.188	.100	.030	
6.0	.222	.111	.032	.214	.108	.031	.199	.102	.030	.185	.096	.028	.172	.091	.027	
7.0	.204	.101	.029	.197	.098	.028	.184	.093	.027	.171	.088	.026	.159	.083	.024	
8.0	.190	.093	.026	.183	.090	.025	.171	.085	.024	.159	.081	.023	.148	.076	.022	
9.0	.177	.085	.024	.171	.083	.023	.159	.079	.022	.148	.074	.021	.138	.070	.020	
10.0	.165	.079	.022	.160	.077	.022	.149	.073	.021	.139	.069	.020	.130	.065	.019	

ρ _{CC}	80%			70%			50%			30%			10%			0
ρ _w	50%	30%	10%	50%	30%	10%	50%	30%	10%	50%	30%	10%	50%	30%	10%	0
ρ _{fc}	20%			20%			20%			20%			20%			0
RCR	RCR:Room Cavity Ratio						Ceiling Cavity Exitance Coefficients(CCEC)									
0.0	.332	.332	.332	.283	.283	.283	.193	.193	.193	.111	.111	.111	.036	.036	.036	
1.0	.328	.298	.271	.280	.256	.233	.192	.176	.161	.110	.102	.094	.035	.033	.030	
2.0	.321	.275	.236	.275	.237	.204	.188	.164	.143	.109	.095	.084	.035	.031	.027	
3.0	.313	.259	.215	.269	.223	.186	.184	.155	.131	.107	.090	.077	.034	.029	.025	
4.0	.306	.246	.201	.262	.213	.174	.180	.148	.123	.104	.087	.073	.034	.028	.024	
5.0	.298	.236	.191	.256	.204	.166	.176	.143	.117	.102	.084	.069	.033	.027	.023	
6.0	.291	.228	.184	.250	.198	.160	.172	.138	.113	.100	.081	.067	.032	.027	.022	
7.0	.284	.222	.178	.244	.192	.155	.168	.135	.110	.098	.079	.066	.032	.026	.022	
8.0	.277	.216	.174	.238	.187	.152	.165	.132	.108	.096	.078	.064	.031	.025	.021	
9.0	.271	.211	.171	.233	.183	.150	.162	.129	.106	.094	.076	.063	.030	.025	.021	
10.0	.265	.207	.169	.228	.180	.147	.158	.127	.105	.092	.075	.063	.030	.025	.021	

C Range: 0 - 360DEG
 C Interval: 90.0DEG
 Test Speed: HIGH
 Temperature:25.3℃
 Operators:DAMIN
 Test Date:04 February 2026
 γ Range: 0 - 180DEG
 γ Interval: 1.0DEG
 Test System:EVERFINE GO-2000B_V1 SYSTEM V2.00.459
 Humidity:65.0%
 Test Distance:7.380m [K=1.0000]
 Remarks:

UGR(Unified Glare Rating) Table

Test:U:120.05V I:0.1446A P:16.296W PF:0.9385 Freq:59.98Hz Lamp Flux:1057.13x1 lm		
NAME: WS14-033B-金色 16W 50K	TYPE:	WEIGHT:
SPEC.:	DIM.:	SERIAL No.: 1
MFR.: EVERFINE	SUR.:	Shielding Angle:

ceiling/cavity	0.7	0.7	0.5	0.5	0.3	0.7	0.7	0.5	0.5	0.3
walls	0.5	0.3	0.5	0.3	0.3	0.5	0.3	0.5	0.3	0.3
working plane	0.2	0.2	0.2	0.2	0.2	0.2	0.2	0.2	0.2	0.2
Room dimensions	Viewed crosswise					Viewed endwise				
x = 2H y = 2H	16.1	17.4	16.6	17.9	18.5	14.1	15.5	14.6	16.0	16.6
3H	18.8	20.1	19.4	20.6	21.3	15.6	16.9	16.2	17.4	18.0
4H	20.4	21.6	21.0	22.2	22.8	16.2	17.4	16.8	18.0	18.6
6H	22.2	23.3	22.8	23.9	24.5	16.6	17.7	17.2	18.3	19.0
8H	23.2	24.3	23.8	24.8	25.5	16.7	17.8	17.3	18.4	19.1
12H	24.3	25.4	24.9	26.0	26.6	16.8	17.9	17.4	18.5	19.2
4H 2H	16.6	17.8	17.1	18.3	19.0	15.2	16.4	15.7	16.9	17.6
3H	19.6	20.6	20.2	21.2	21.9	17.0	18.0	17.6	18.6	19.3
4H	21.3	22.3	21.9	22.9	23.6	17.7	18.7	18.4	19.3	20.1
6H	23.3	24.1	23.9	24.8	25.5	18.4	19.2	19.0	19.9	20.6
8H	24.4	25.2	25.0	25.8	26.6	18.6	19.4	19.3	20.1	20.8
12H	25.7	26.4	26.3	27.1	27.9	18.7	19.5	19.4	20.2	21.0
8H 4H	21.6	22.4	22.2	23.0	23.8	18.7	19.5	19.4	20.2	20.9
6H	23.8	24.5	24.5	25.2	26.0	19.7	20.4	20.4	21.1	21.9
8H	25.1	25.7	25.8	26.4	27.2	20.1	20.7	20.8	21.4	22.3
12H	26.6	27.2	27.4	27.9	28.8	20.5	21.0	21.2	21.8	22.6
12H 4H	21.6	22.3	22.3	23.0	23.8	19.0	19.8	19.7	20.4	21.2
6H	23.9	24.5	24.6	25.2	26.0	20.2	20.8	20.9	21.5	22.4
8H	25.3	25.8	26.0	26.5	27.4	20.8	21.3	21.5	22.1	22.9
Variations with the observer position at spacings(CIE Pub.117):										
S = 1.0H	+ 0.1 / - 0.1					+ 0.1 / - 0.1				
1.5H	+ 0.2 / - 0.2					+ 0.2 / - 0.3				
2.0H	+ 0.2 / - 0.3					+ 0.2 / - 0.5				

CIE Pub.117, 1057 lm Total Lamp Luminous Flux Correct (8log(F/F0) = 0.2)
Area: 0.1 m2

C Range: 0 - 360DEG	γ Range: 0 - 180DEG
C Interval: 90.0DEG	γ Interval: 1.0DEG
Test Speed: HIGH	Test System:EVERFINE GO-2000B_V1 SYSTEM V2.00.459
Temperature:25.3℃	Humidity:65.0%
Operators:DAMIN	Test Distance:7.380m [K=1.0000]
Test Date:04 February 2026	Remarks:

UTILIZATION FACTORS TABLE

Test:U:120.05V I:0.1446A P:16.296W PF:0.9385 Freq:59.98Hz Lamp Flux:1057.13x1 lm		
NAME: WS14-033B-金色 16W 50K	TYPE:	WEIGHT:
SPEC.:	DIM.:	SERIAL No.: 1
MFR.: EVERFINE	SUR.:	Shielding Angle:

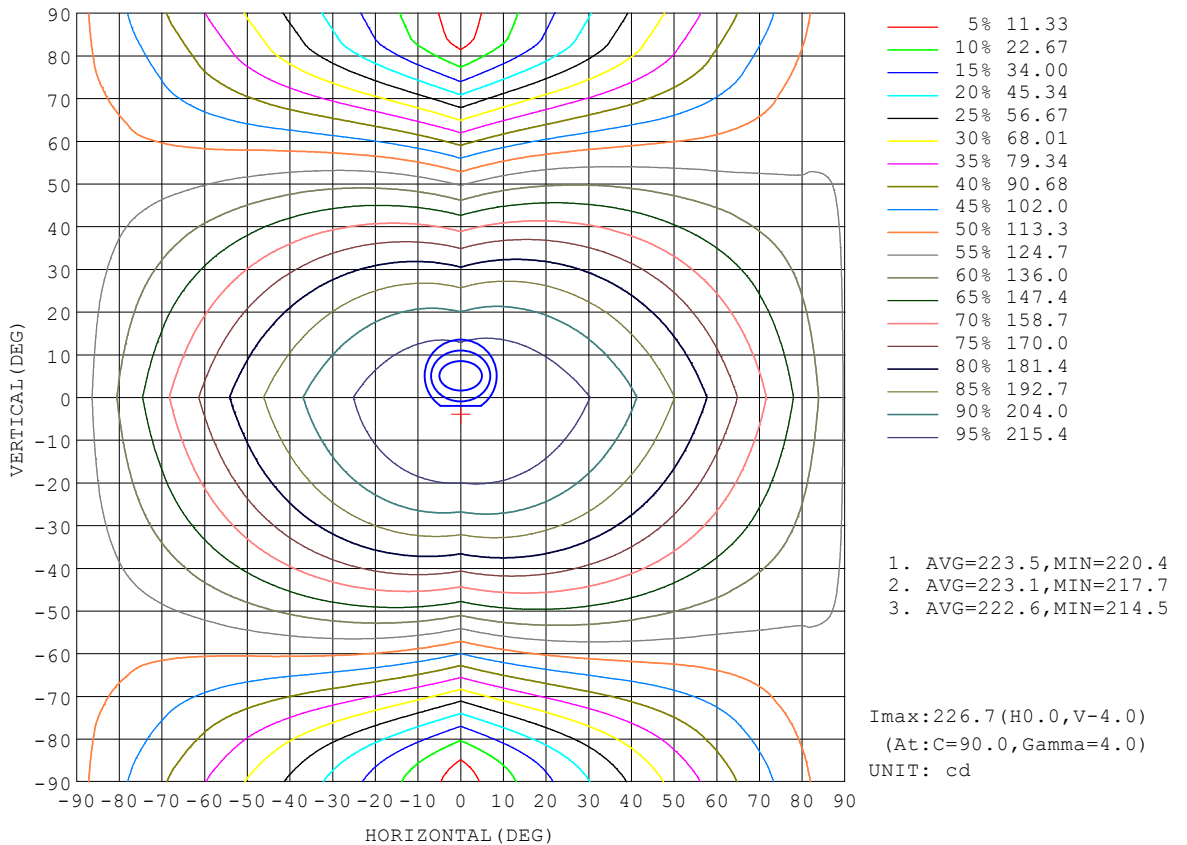
REFLECTANCE										
Ceiling	0.8	0.8	0.8	0.7	0.7	0.7	0.5	0.5	0.5	0
Walls	0.7	0.5	0.3	0.7	0.5	0.3	0.7	0.5	0.3	0
Working plane	0.2	0.2	0.2	0.2	0.2	0.2	0.2	0.2	0.2	0
ROOM INDEX	UTILIZATION FACTORS (PERCENT) $k(RI) \times RCR = 5$									
k = 0.60	48	35	28	47	35	28	45	34	27	20
0.80	57	44	36	55	43	35	52	42	35	27
1.00	65	52	43	63	51	43	59	51	42	33
1.25	72	59	51	69	58	50	65	55	48	38
1.50	77	65	56	74	63	55	69	60	53	42
2.00	84	73	65	81	71	63	75	67	60	49
2.50	89	78	70	85	76	69	79	71	65	52
3.00	92	83	76	89	80	74	82	75	69	56
4.00	97	89	83	93	86	80	86	80	75	61
5.00	100	93	87	96	90	84	88	83	79	64
ROOM INDEX	UF(total)									Direct
According to DIN EN 13032-2 2004			Suspended				SHRNOM = 1.25			

C Range: 0 - 360DEG
 C Interval: 90.0DEG
 Test Speed: HIGH
 Temperature:25.3℃
 Operators:DAMIN
 Test Date:04 February 2026

γ Range: 0 - 180DEG
 γ Interval: 1.0DEG
 Test System:EVERFINE GO-2000B_V1 SYSTEM V2.00.459
 Humidity:65.0%
 Test Distance:7.380m [K=1.0000]
 Remarks:

ISOCANDELA DIAGRAM

Test:U:120.05V I:0.1446A P:16.296W PF:0.9385 Freq:59.98Hz Lamp Flux:1057.13x1 lm		
NAME: WS14-033B-金色 16W 50K	TYPE:	WEIGHT:
SPEC.:	DIM.:	SERIAL No.: 1
MFR.: EVERFINE	SUR.:	Shielding Angle:

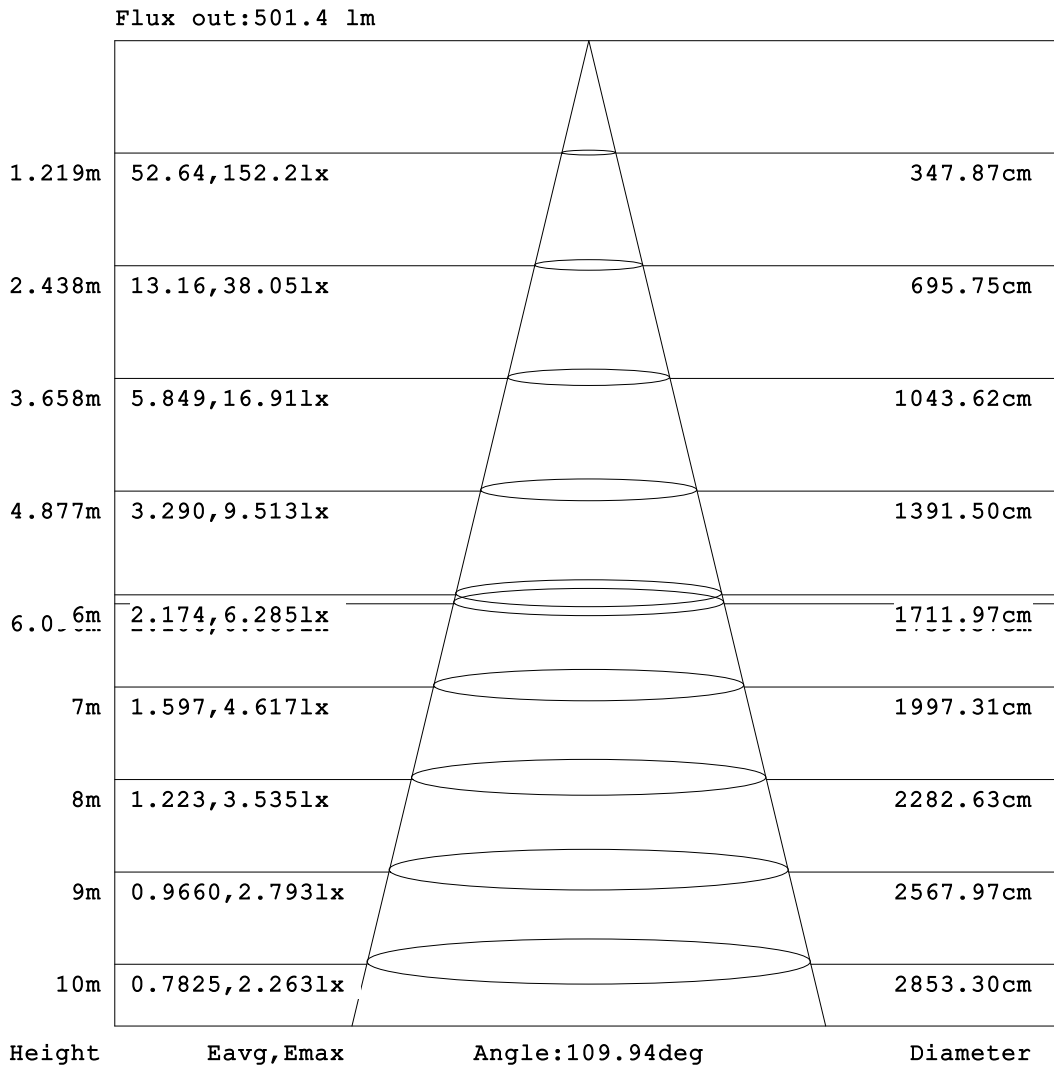


C Range: 0 - 360DEG
C Interval: 90.0DEG
Test Speed: HIGH
Temperature:25.3℃
Operators:DAMIN
Test Date:04 February 2026

γ Range: 0 - 180DEG
γ Interval: 1.0DEG
Test System:EVERFINE GO-2000B_V1 SYSTEM V2.00.459
Humidity:65.0%
Test Distance:7.380m [K=1.0000]
Remarks:

AAI Figure

Test:U:120.05V I:0.1446A P:16.296W PF:0.9385 Freq:59.98Hz Lamp Flux:1057.13x1 lm		
NAME: WS14-033B-金色 16W 50K	TYPE:	WEIGHT:
SPEC.:	DIM.:	SERIAL No.: 1
MFR.: EVERFINE	SUR.:	Shielding Angle:



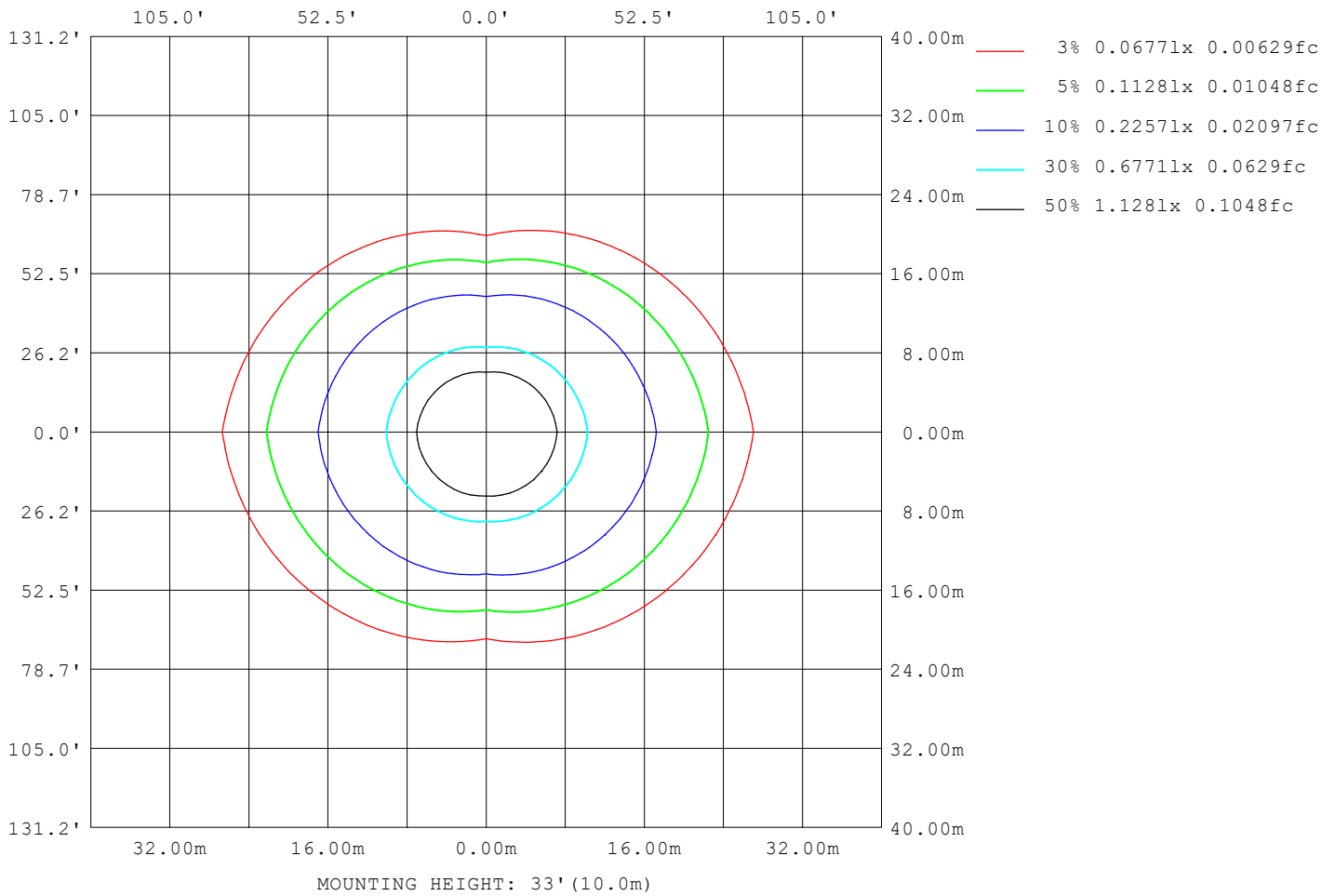
Note:The Curves indicate the illuminated area and the average illumination when the luminaire is at different distance.

C Range: 0 - 360DEG
 C Interval: 90.0DEG
 Test Speed: HIGH
 Temperature:25.3°C
 Operators:DAMIN
 Test Date:04 February 2026

γ Range: 0 - 180DEG
 γ Interval: 1.0DEG
 Test System:EVERFINE GO-2000B_V1 SYSTEM V2.00.459
 Humidity:65.0%
 Test Distance:7.380m [K=1.0000]
 Remarks:

ISOLUX DIAGRAM

Test:U:120.05V I:0.1446A P:16.296W PF:0.9385 Freq:59.98Hz Lamp Flux:1057.13x1 lm		
NAME: WS14-033B-金色 16W 50K	TYPE:	WEIGHT:
SPEC.:	DIM.:	SERIAL No.: 1
MFR.: EVERFINE	SUR.:	Shielding Angle:



C Range: 0 - 360DEG
 C Interval: 90.0DEG
 Test Speed: HIGH
 Temperature:25.3 °C
 Operators:DAMIN
 Test Date:04 February 2026

γ Range: 0 - 180DEG
 γ Interval: 1.0DEG
 Test System:EVERFINE GO-2000B_V1 SYSTEM V2.00.459
 Humidity:65.0%
 Test Distance:7.380m [K=1.0000]
 Remarks:

LED Avg.L Report

Test:U:120.05V I:0.1446A P:16.296W PF:0.9385 Freq:59.98Hz Lamp Flux:1057.13x1 lm		
NAME: WS14-033B-金色 16W 50K	TYPE:	WEIGHT:
SPEC.:	DIM.:	SERIAL No.: 1
MFR.: EVERFINE	SUR.:	Shielding Angle:

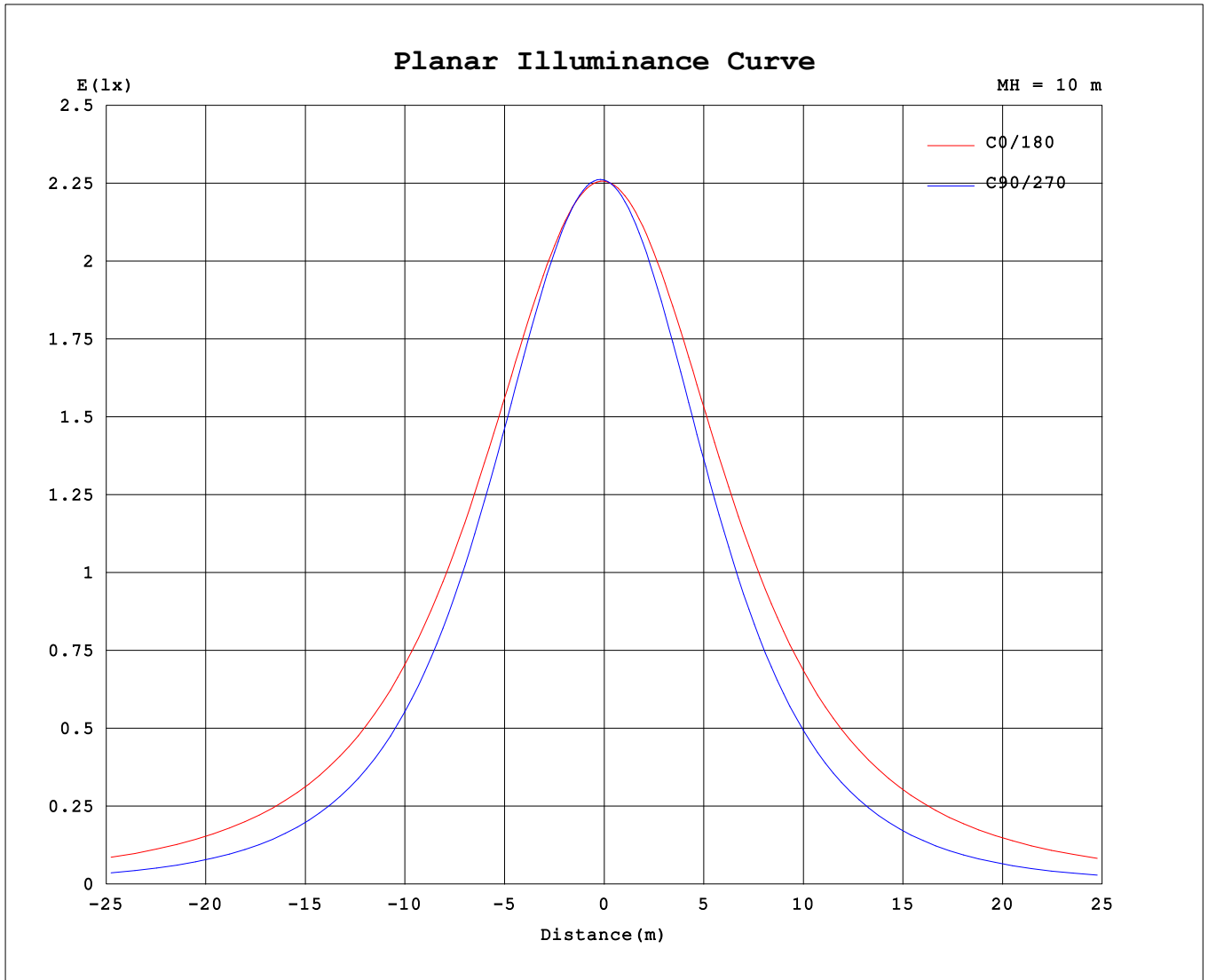
AvgL	cd/m2
L_0~180 (65) av	3950
L_0~180 (75) av	5778
L_0~180 (85) av	15003
L_90~270 (65) av	1768
L_90~270 (75) av	1388
L_90~270 (85) av	1003
L_45 (65) av	2582
L_45 (75) av	3027
L_45 (85) av	6229

Standard: GB/T 29293-2012

C Range: 0 - 360DEG
 C Interval: 90.0DEG
 Test Speed: HIGH
 Temperature:25.3℃
 Operators:DAMIN
 Test Date:04 February 2026

γ Range: 0 - 180DEG
 γ Interval: 1.0DEG
 Test System:EVERFINE GO-2000B_V1 SYSTEM V2.00.459
 Humidity:65.0%
 Test Distance:7.380m [K=1.0000]
 Remarks:

Planar Illuminance Curve



C Range: 0 - 360DEG
 C Interval: 90.0DEG
 Test Speed: HIGH
 Temperature: 25.3 °C
 Operators: DAMIN
 Test Date: 04 February 2026

γ Range: 0 - 180DEG
 γ Interval: 1.0DEG
 Test System: EVERFINE GO-2000B_V1 SYSTEM V2.00.459
 Humidity: 65.0%
 Test Distance: 7.380m [K=1.0000]
 Remarks:

LUMINOUS DISTRIBUTION INTENSITY DATA

Test:U:120.05V I:0.1446A P:16.296W PF:0.9385 Freq:59.98Hz Lamp Flux:1057.13x1 lm		
NAME: WS14-033B-金色 16W 50K	TYPE:	WEIGHT:
SPEC.:	DIM.:	SERIAL No.: 1
MFR.: EVERFINE	SUR.:	Shielding Angle:

Table--1

UNIT: cd

C (DEG) \ γ (DEG)	0	90	180	270															
0	226	226	226	226															
5	226	227	225	223															
10	225	225	224	219															
15	224	221	222	212															
20	222	215	219	204															
25	219	207	215	194															
30	216	198	211	183															
35	211	186	206	170															
40	206	172	200	155															
45	199	157	194	140															
50	193	140	187	123															
55	186	122	180	106															
60	178	102	172	86.7															
65	170	81.9	164	67.5															
70	162	61.4	156	48.5															
75	153	41.6	146	30.2															
80	144	24.0	137	14.7															
85	134	11.1	127	6.39															
90	124	5.53	117	4.89															
95	111	5.33	99.8	3.81															
100	77.5	6.17	51.1	3.52															
105	56.0	7.14	55.5	3.86															
110	74.2	8.29	68.4	4.47															
115	67.7	9.23	61.8	5.21															
120	61.4	10.4	55.3	5.64															
125	55.0	11.4	49.0	5.65															
130	49.1	12.4	43.5	4.36															
135	43.6	13.4	38.6	3.88															
140	38.5	14.3	33.8	4.99															
145	34.0	15.1	24.9	4.83															
150	15.2	15.9	12.9	4.03															
155	13.6	16.5	12.3	4.07															
160	13.0	15.8	11.9	4.18															
165	14.4	14.2	13.4	4.30															
170	13.8	13.3	12.1	5.47															
175	10.8	13.9	11.5	8.71															
180	12.2	12.1	12.2	12.1															

C Range: 0 - 360DEG
 C Interval: 90.0DEG
 Test Speed: HIGH
 Temperature:25.3℃
 Operators:DAMIN
 Test Date:04 February 2026

γ Range: 0 - 180DEG
 γ Interval: 1.0DEG
 Test System:EVERFINE GO-2000B_V1 SYSTEM V2.00.459
 Humidity:65.0%
 Test Distance:7.380m [K=1.0000]
 Remarks: