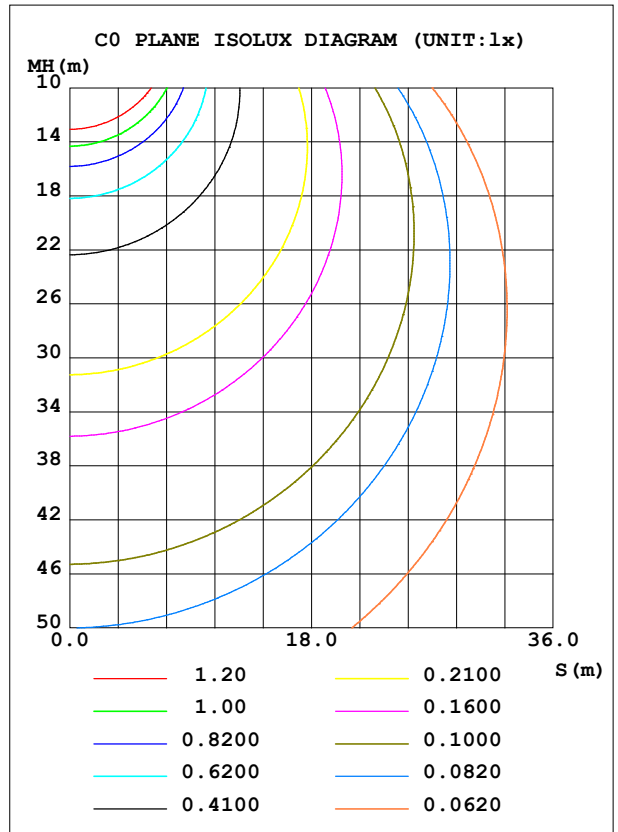
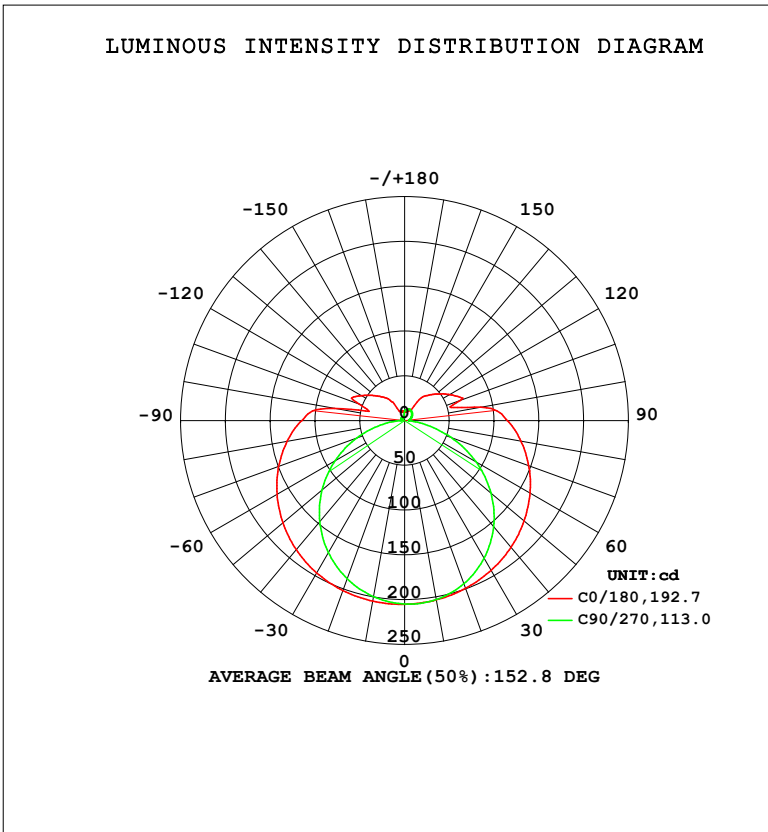


LUMINAIRE PHOTOMETRIC TEST REPORT

| | | |
|--|-------|------------------|
| Test:U:119.93V I:0.1424A P:16.014W PF:0.9376 Freq:59.98Hz Lamp Flux:995.65x1 lm | | |
| NAME: WS14-033B-BN 16W 27K | TYPE: | WEIGHT: |
| SPEC.: | DIM.: | SERIAL No.: 1 |
| MFR.: EVERFINE | SUR.: | Shielding Angle: |

| DATA OF LAMP | | PHOTOMETRIC DATA | | | | Eff: 62.17 lm/W |
|-------------------|--------|-----------------------|---------|---------------------|------------|-----------------|
| MODEL | 2700K | I _{max} (cd) | 205.3 | S/MH (C0/180) | 1.44 | |
| NOMINAL POWER (W) | 16 | LOR (%) | 100.0 | S/MH (C90/270) | 1.24 | |
| RATED VOLTAGE (V) | 120 | TOTAL FLUX (lm) | 995.65 | η UP, DN (C0-180) | 10.3, 40.4 | |
| NOMINAL FLUX (lm) | 995.65 | CIE CLASS | SEMI-D. | η UP, DN (C180-360) | 8.9, 40.5 | |
| LAMPS INSIDE | 1 | η up (%) | 19.2 | CIBSE SHR NOM | 1.50 | |
| TEST VOLTAGE (V) | 120 | η down (%) | 80.8 | CIBSE SHR MAX | 1.50 | |



C Range: 0 - 360DEG
 C Interval: 90.0DEG
 Test Speed: HIGH
 Temperature: 25.3 °C
 Operators: DAMIN
 Test Date: 24 April 2026

γ Range: 0 - 180DEG
 γ Interval: 1.0DEG
 Test System: EVERFINE GO-2000B_V1 SYSTEM V2.00.459
 Humidity: 65.0%
 Test Distance: 7.380m [K=1.0000]
 Remarks:

ZONAL FLUX DIAGRAM

ZONAL FLUX DIAGRAM:

| γ | C0 | C90 | C180 | C270 | | | | γ | Φ zone | Φ total | %lum,lamp |
|----------|-----------------------|-------|-------|-------|--|--|--|----------|-------------|--------------|-----------|
| 10 | 203.3 | 202.9 | 204.7 | 199.7 | | | | 0- 10 | 19.46 | 19.46 | 1.95,1.95 |
| 20 | 199.3 | 193.7 | 201.9 | 187.9 | | | | 10- 20 | 56.46 | 75.92 | 7.62,7.62 |
| 30 | 193.1 | 177.6 | 196.5 | 170.3 | | | | 20- 30 | 87.96 | 163.9 | 16.5,16.5 |
| 40 | 184.8 | 154.7 | 188.3 | 147.5 | | | | 30- 40 | 110.9 | 274.8 | 27.6,27.6 |
| 50 | 174.2 | 126.0 | 177.5 | 120.4 | | | | 40- 50 | 123.3 | 398.1 | 40,40 |
| 60 | 161.8 | 92.11 | 164.5 | 89.65 | | | | 50- 60 | 124.0 | 522.1 | 52.4,52.4 |
| 70 | 147.5 | 55.14 | 149.8 | 56.77 | | | | 60- 70 | 113.8 | 635.9 | 63.9,63.9 |
| 80 | 131.8 | 20.43 | 133.1 | 24.94 | | | | 70- 80 | 94.83 | 730.7 | 73.4,73.4 |
| 90 | 114.7 | 4.712 | 114.9 | 5.241 | | | | 80- 90 | 73.95 | 804.7 | 80.8,80.8 |
| 100 | 86.52 | 5.554 | 79.50 | 3.442 | | | | 90-100 | 59.15 | 863.8 | 86.8,86.8 |
| 110 | 66.18 | 7.087 | 53.68 | 4.018 | | | | 100-110 | 33.31 | 897.2 | 90.1,90.1 |
| 120 | 58.39 | 8.928 | 55.99 | 4.903 | | | | 110-120 | 34.06 | 931.2 | 93.5,93.5 |
| 130 | 46.31 | 10.68 | 43.57 | 4.335 | | | | 120-130 | 26.19 | 957.4 | 96.2,96.2 |
| 140 | 35.95 | 12.28 | 33.30 | 4.946 | | | | 130-140 | 18.44 | 975.8 | 98,98 |
| 150 | 13.87 | 13.55 | 12.44 | 4.034 | | | | 140-150 | 11.13 | 987.0 | 99.1,99.1 |
| 160 | 11.86 | 13.76 | 10.55 | 4.165 | | | | 150-160 | 4.878 | 991.9 | 99.6,99.6 |
| 170 | 11.72 | 11.79 | 10.92 | 5.273 | | | | 160-170 | 2.865 | 994.7 | 99.9,99.9 |
| 180 | 10.91 | 10.81 | 10.93 | 10.77 | | | | 170-180 | 0.9333 | 995.6 | 100,100 |
| DEG | LUMINOUS INTENSITY:cd | | | | | | | | UNIT:lm | | |

Conical surface Flux(90deg): 335.62 lm

%lum = 33.7%

%lamp = 33.7%

Conical surface Flux(120deg): 522.12 lm

%lum = 52.4%

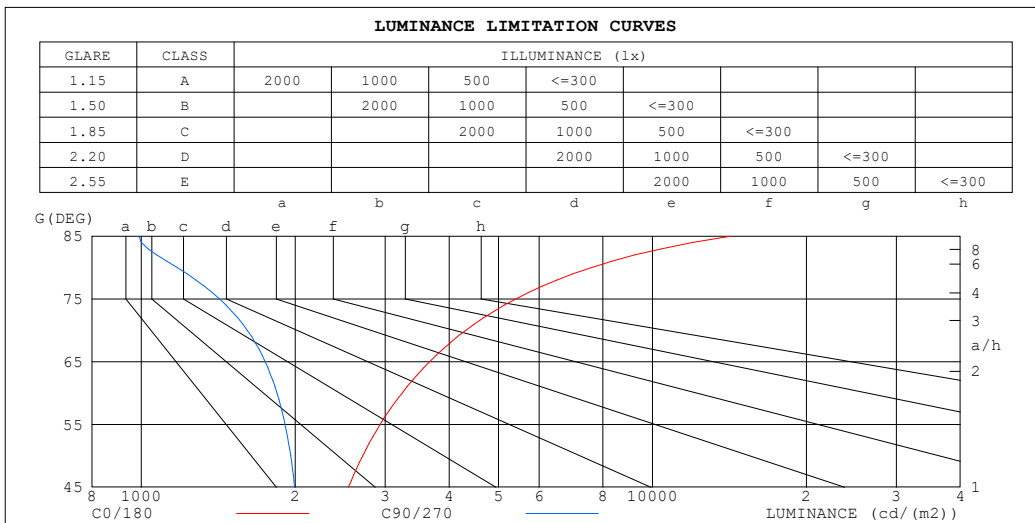
%lamp = 52.4%

C Range: 0 - 360DEG
 C Interval: 90.0DEG
 Test Speed: HIGH
 Temperature:25.3°C
 Operators:DAMIN
 Test Date:24 April 2026

γ Range: 0 - 180DEG
 γ Interval: 1.0DEG
 Test System:EVERFINE GO-2000B_V1 SYSTEM V2.00.459
 Humidity:65.0%
 Test Distance:7.380m [K=1.0000]
 Remarks:

LUMINANCE LIMITATION CURVES

| | | |
|--|-------|------------------|
| Test:U:119.93V I:0.1424A P:16.014W PF:0.9376 Freq:59.98Hz Lamp Flux:995.65x1 lm | | |
| NAME: WS14-033B-BN 16W 27K | TYPE: | WEIGHT: |
| SPEC.: | DIM.: | SERIAL No.: 1 |
| MFR.: EVERFINE | SUR.: | Shielding Angle: |



| LUMINANCE cd/(m2) | | |
|-------------------|--------|---------|
| G (DEG) | C0/180 | C90/270 |
| 85 | 14203 | 990 |
| 80 | 7592 | 1177 |
| 75 | 5401 | 1424 |
| 70 | 4311 | 1612 |
| 65 | 3666 | 1747 |
| 60 | 3236 | 1842 |
| 55 | 2932 | 1910 |
| 50 | 2711 | 1959 |
| 45 | 2543 | 1995 |

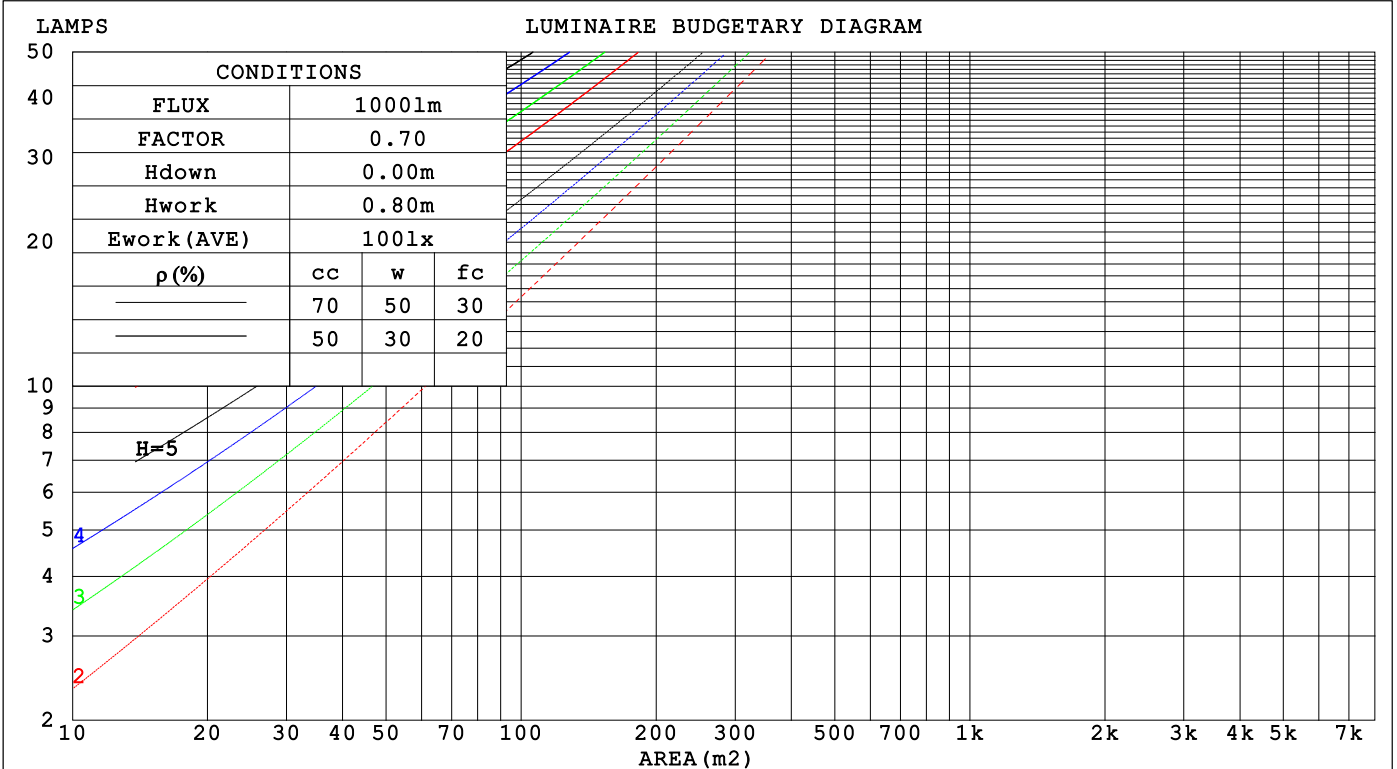
C Range: 0 - 360DEG
 C Interval: 90.0DEG
 Test Speed: HIGH
 Temperature:25.3℃
 Operators:DAMIN
 Test Date:24 April 2026

γ Range: 0 - 180DEG
 γ Interval: 1.0DEG
 Test System:EVERFINE GO-2000B_V1 SYSTEM V2.00.459
 Humidity:65.0%
 Test Distance:7.380m [K=1.0000]
 Remarks:

CU AND LUMINAIRE BUDGETARY ESTIMATE DIAGRAM

| | | |
|--|-------|------------------|
| Test:U:119.93V I:0.1424A P:16.014W PF:0.9376 Freq:59.98Hz Lamp Flux:995.65x1 lm | | |
| NAME: WS14-033B-BN 16W 27K | TYPE: | WEIGHT: |
| SPEC.: | DIM.: | SERIAL No.: 1 |
| MFR.: EVERFINE | SUR.: | Shielding Angle: |

| | | | | | | | | | | | | | | | | |
|-----------------|-----------------------|------|------|------|------|------|---------------------------------|------|------|-----|-----|-----|-----|-----|-----|-----|
| pcc | 80% | | | 70% | | | 50% | | | 30% | | | 10% | | | 0 |
| p _w | 50% | 30% | 10% | 50% | 30% | 10% | 50% | 30% | 10% | 50% | 30% | 10% | 50% | 30% | 10% | 0 |
| p _{fc} | 20% | | | 20% | | | 20% | | | 20% | | | 20% | | | 0 |
| RCR | RCR:Room Cavity Ratio | | | | | | Coefficients of Utilization(CU) | | | | | | | | | |
| 0.0 | 1.14 | 1.14 | 1.14 | 1.10 | 1.10 | 1.10 | 1.00 | 1.00 | 1.00 | .92 | .92 | .92 | .84 | .84 | .84 | .81 |
| 1.0 | .95 | .90 | .85 | .91 | .86 | .82 | .83 | .79 | .76 | .76 | .73 | .70 | .69 | .67 | .65 | .61 |
| 2.0 | .81 | .74 | .67 | .78 | .71 | .65 | .71 | .65 | .60 | .65 | .60 | .56 | .59 | .55 | .52 | .49 |
| 3.0 | .71 | .61 | .54 | .67 | .59 | .53 | .62 | .55 | .49 | .56 | .51 | .46 | .51 | .47 | .43 | .40 |
| 4.0 | .62 | .52 | .45 | .59 | .50 | .44 | .54 | .47 | .41 | .50 | .43 | .38 | .45 | .40 | .36 | .33 |
| 5.0 | .55 | .45 | .38 | .53 | .44 | .37 | .48 | .41 | .35 | .44 | .38 | .33 | .40 | .35 | .31 | .28 |
| 6.0 | .49 | .40 | .33 | .47 | .38 | .32 | .43 | .36 | .30 | .40 | .33 | .28 | .36 | .31 | .27 | .24 |
| 7.0 | .44 | .35 | .29 | .42 | .34 | .28 | .39 | .32 | .26 | .36 | .30 | .25 | .33 | .28 | .24 | .21 |
| 8.0 | .40 | .31 | .25 | .39 | .30 | .25 | .36 | .29 | .23 | .33 | .27 | .22 | .30 | .25 | .21 | .19 |
| 9.0 | .37 | .28 | .23 | .35 | .27 | .22 | .33 | .26 | .21 | .30 | .24 | .20 | .28 | .23 | .19 | .17 |
| 10.0 | .34 | .26 | .20 | .32 | .25 | .20 | .30 | .23 | .19 | .28 | .22 | .18 | .26 | .21 | .17 | .15 |



C Range: 0 - 360DEG
 C Interval: 90.0DEG
 Test Speed: HIGH
 Temperature:25.3 °C
 Operators:DAMIN
 Test Date:24 April 2026

γ Range: 0 - 180DEG
 γ Interval: 1.0DEG
 Test System:EVERFINE GO-2000B_V1 SYSTEM V2.00.459
 Humidity:65.0%
 Test Distance:7.380m [K=1.0000]
 Remarks:

WEC AND CCEC

| | | |
|--|-------|------------------|
| Test:U:119.93V I:0.1424A P:16.014W PF:0.9376 Freq:59.98Hz Lamp Flux:995.65x1 lm | | |
| NAME: WS14-033B-BN 16W 27K | TYPE: | WEIGHT: |
| SPEC.: | DIM.: | SERIAL No.: 1 |
| MFR.: EVERFINE | SUR.: | Shielding Angle: |

| ρ_{CC} | 80% | | | 70% | | | 50% | | | 30% | | | 10% | | | 0 |
|-------------|-----------------------|------|------|------|------|------|---------------------------------|------|------|------|------|------|------|------|------|---|
| ρ_w | 50% | 30% | 10% | 50% | 30% | 10% | 50% | 30% | 10% | 50% | 30% | 10% | 50% | 30% | 10% | 0 |
| ρ_{fc} | 20% | | | 20% | | | 20% | | | 20% | | | 20% | | | 0 |
| RCR | RCR:Room Cavity Ratio | | | | | | Wall Exitance Coefficients(WEC) | | | | | | | | | |
| 0.0 | | | | | | | | | | | | | | | | |
| 1.0 | .386 | .219 | .070 | .373 | .213 | .068 | .348 | .200 | .064 | .326 | .188 | .060 | .305 | .177 | .057 | |
| 2.0 | .334 | .183 | .056 | .322 | .178 | .055 | .300 | .167 | .052 | .280 | .157 | .049 | .261 | .148 | .047 | |
| 3.0 | .297 | .158 | .047 | .286 | .153 | .046 | .266 | .144 | .044 | .248 | .136 | .042 | .230 | .128 | .039 | |
| 4.0 | .267 | .139 | .041 | .257 | .135 | .040 | .239 | .127 | .038 | .222 | .119 | .036 | .207 | .112 | .034 | |
| 5.0 | .243 | .124 | .036 | .234 | .120 | .035 | .217 | .113 | .033 | .202 | .107 | .032 | .188 | .100 | .030 | |
| 6.0 | .222 | .111 | .032 | .214 | .108 | .031 | .199 | .102 | .030 | .185 | .096 | .028 | .172 | .091 | .027 | |
| 7.0 | .205 | .101 | .029 | .198 | .099 | .028 | .184 | .093 | .027 | .171 | .088 | .026 | .159 | .083 | .024 | |
| 8.0 | .190 | .093 | .026 | .183 | .090 | .026 | .171 | .085 | .024 | .159 | .080 | .023 | .148 | .076 | .022 | |
| 9.0 | .177 | .086 | .024 | .171 | .083 | .023 | .159 | .079 | .022 | .148 | .074 | .021 | .138 | .070 | .020 | |
| 10.0 | .166 | .079 | .022 | .160 | .077 | .022 | .149 | .073 | .021 | .139 | .069 | .020 | .129 | .065 | .019 | |

| ρ_{CC} | 80% | | | 70% | | | 50% | | | 30% | | | 10% | | | 0 |
|-------------|-----------------------|------|------|------|------|------|--|------|------|------|------|------|------|------|------|---|
| ρ_w | 50% | 30% | 10% | 50% | 30% | 10% | 50% | 30% | 10% | 50% | 30% | 10% | 50% | 30% | 10% | 0 |
| ρ_{fc} | 20% | | | 20% | | | 20% | | | 20% | | | 20% | | | 0 |
| RCR | RCR:Room Cavity Ratio | | | | | | Ceiling Cavity Exitance Coefficients(CCEC) | | | | | | | | | |
| 0.0 | .337 | .337 | .337 | .288 | .288 | .288 | .196 | .196 | .196 | .113 | .113 | .113 | .036 | .036 | .036 | |
| 1.0 | .333 | .303 | .276 | .285 | .260 | .237 | .195 | .179 | .164 | .112 | .103 | .095 | .036 | .033 | .031 | |
| 2.0 | .326 | .280 | .241 | .279 | .241 | .209 | .191 | .167 | .145 | .110 | .097 | .085 | .035 | .031 | .028 | |
| 3.0 | .319 | .264 | .220 | .273 | .227 | .190 | .188 | .158 | .134 | .108 | .092 | .079 | .035 | .030 | .026 | |
| 4.0 | .311 | .251 | .205 | .267 | .217 | .178 | .184 | .151 | .126 | .106 | .089 | .074 | .034 | .029 | .024 | |
| 5.0 | .303 | .241 | .196 | .261 | .209 | .170 | .179 | .146 | .120 | .104 | .086 | .071 | .034 | .028 | .023 | |
| 6.0 | .296 | .233 | .189 | .254 | .202 | .164 | .175 | .142 | .116 | .102 | .083 | .069 | .033 | .027 | .023 | |
| 7.0 | .289 | .227 | .183 | .248 | .197 | .160 | .172 | .138 | .113 | .100 | .081 | .067 | .032 | .027 | .022 | |
| 8.0 | .282 | .221 | .180 | .243 | .192 | .157 | .168 | .135 | .111 | .098 | .080 | .066 | .032 | .026 | .022 | |
| 9.0 | .276 | .217 | .177 | .238 | .188 | .154 | .165 | .132 | .109 | .096 | .078 | .065 | .031 | .026 | .022 | |
| 10.0 | .270 | .212 | .174 | .233 | .184 | .152 | .162 | .130 | .108 | .094 | .077 | .064 | .031 | .025 | .021 | |

C Range: 0 - 360DEG
 C Interval: 90.0DEG
 Test Speed: HIGH
 Temperature:25.3°C
 Operators:DAMIN
 Test Date:24 April 2026

γ Range: 0 - 180DEG
 γ Interval: 1.0DEG
 Test System:EVERFINE GO-2000B_V1 SYSTEM V2.00.459
 Humidity:65.0%
 Test Distance:7.380m [K=1.0000]
 Remarks:

UGR(Unified Glare Rating) Table

| | | |
|--|-------|------------------|
| Test:U:119.93V I:0.1424A P:16.014W PF:0.9376 Freq:59.98Hz Lamp Flux:995.65x1 lm | | |
| NAME: WS14-033B-BN 16W 27K | TYPE: | WEIGHT: |
| SPEC.: | DIM.: | SERIAL No.: 1 |
| MFR.: EVERFINE | SUR.: | Shielding Angle: |

| | | | | | | | | | | |
|---|------------------|------|------|------|------|----------------|------|------|------|------|
| ceiling/cavity | 0.7 | 0.7 | 0.5 | 0.5 | 0.3 | 0.7 | 0.7 | 0.5 | 0.5 | 0.3 |
| walls | 0.5 | 0.3 | 0.5 | 0.3 | 0.3 | 0.5 | 0.3 | 0.5 | 0.3 | 0.3 |
| working plane | 0.2 | 0.2 | 0.2 | 0.2 | 0.2 | 0.2 | 0.2 | 0.2 | 0.2 | 0.2 |
| Room dimensions | Viewed crosswise | | | | | Viewed endwise | | | | |
| x = 2H y = 2H | 15.8 | 17.1 | 16.3 | 17.7 | 18.3 | 13.8 | 15.2 | 14.3 | 15.7 | 16.3 |
| 3H | 18.6 | 19.8 | 19.1 | 20.4 | 21.0 | 15.3 | 16.6 | 15.9 | 17.1 | 17.8 |
| 4H | 20.2 | 21.4 | 20.7 | 21.9 | 22.6 | 15.9 | 17.1 | 16.5 | 17.7 | 18.3 |
| 6H | 22.0 | 23.1 | 22.5 | 23.7 | 24.3 | 16.3 | 17.4 | 16.9 | 18.0 | 18.7 |
| 8H | 23.0 | 24.0 | 23.6 | 24.6 | 25.3 | 16.4 | 17.5 | 17.0 | 18.1 | 18.8 |
| 12H | 24.1 | 25.2 | 24.7 | 25.8 | 26.5 | 16.4 | 17.5 | 17.0 | 18.1 | 18.8 |
| 4H 2H | 16.3 | 17.5 | 16.9 | 18.1 | 18.7 | 14.9 | 16.1 | 15.4 | 16.6 | 17.3 |
| 3H | 19.3 | 20.3 | 19.9 | 21.0 | 21.7 | 16.7 | 17.7 | 17.3 | 18.3 | 19.0 |
| 4H | 21.0 | 22.0 | 21.7 | 22.6 | 23.4 | 17.4 | 18.4 | 18.1 | 19.0 | 19.8 |
| 6H | 23.0 | 23.9 | 23.7 | 24.6 | 25.3 | 18.0 | 18.9 | 18.7 | 19.6 | 20.3 |
| 8H | 24.2 | 25.0 | 24.8 | 25.6 | 26.4 | 18.2 | 19.0 | 18.9 | 19.7 | 20.5 |
| 12H | 25.5 | 26.2 | 26.2 | 26.9 | 27.7 | 18.4 | 19.1 | 19.1 | 19.8 | 20.6 |
| 8H 4H | 21.3 | 22.1 | 22.0 | 22.8 | 23.6 | 18.4 | 19.2 | 19.1 | 19.9 | 20.7 |
| 6H | 23.6 | 24.2 | 24.3 | 24.9 | 25.8 | 19.4 | 20.0 | 20.1 | 20.8 | 21.6 |
| 8H | 24.9 | 25.5 | 25.6 | 26.2 | 27.0 | 19.8 | 20.4 | 20.5 | 21.1 | 22.0 |
| 12H | 26.4 | 27.0 | 27.2 | 27.7 | 28.6 | 20.1 | 20.7 | 20.9 | 21.4 | 22.3 |
| 12H 4H | 21.3 | 22.1 | 22.0 | 22.8 | 23.6 | 18.7 | 19.5 | 19.4 | 20.2 | 21.0 |
| 6H | 23.6 | 24.2 | 24.4 | 25.0 | 25.8 | 19.9 | 20.5 | 20.6 | 21.2 | 22.1 |
| 8H | 25.0 | 25.6 | 25.8 | 26.3 | 27.2 | 20.5 | 21.0 | 21.2 | 21.8 | 22.6 |
| Variations with the observer position at spacings(CIE Pub.117): | | | | | | | | | | |
| S = 1.0H | + 0.1 / - 0.1 | | | | | + 0.1 / - 0.1 | | | | |
| 1.5H | + 0.2 / - 0.2 | | | | | + 0.2 / - 0.3 | | | | |
| 2.0H | + 0.2 / - 0.3 | | | | | + 0.3 / - 0.5 | | | | |

CIE Pub.117, 995.6 lm Total Lamp Luminous Flux Correct (8log(F/F0) = -0.0)
Area: 0.1 m2

| | |
|-------------------------|---|
| C Range: 0 - 360DEG | γ Range: 0 - 180DEG |
| C Interval: 90.0DEG | γ Interval: 1.0DEG |
| Test Speed: HIGH | Test System:EVERFINE GO-2000B_V1 SYSTEM V2.00.459 |
| Temperature:25.3℃ | Humidity:65.0% |
| Operators:DAMIN | Test Distance:7.380m [K=1.0000] |
| Test Date:24 April 2026 | Remarks: |

UTILIZATION FACTORS TABLE

| | | |
|--|-------|------------------|
| Test:U:119.93V I:0.1424A P:16.014W PF:0.9376 Freq:59.98Hz Lamp Flux:995.65x1 lm | | |
| NAME: WS14-033B-BN 16W 27K | TYPE: | WEIGHT: |
| SPEC.: | DIM.: | SERIAL No.: 1 |
| MFR.: EVERFINE | SUR.: | Shielding Angle: |

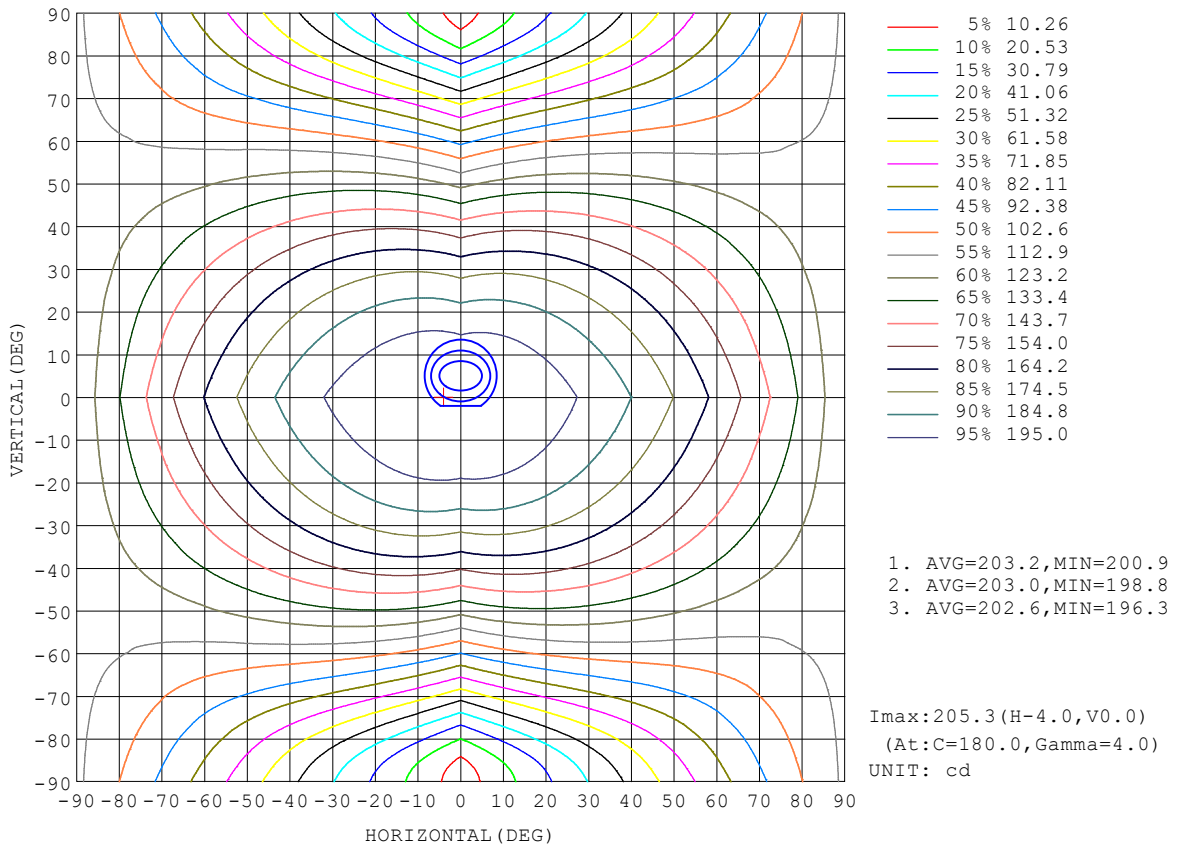
| REFLECTANCE | | | | | | | | | | |
|----------------------------------|--|-----|-----------|-----|-----|-----|---------------|-----|-----|--------|
| Ceiling | 0.8 | 0.8 | 0.8 | 0.7 | 0.7 | 0.7 | 0.5 | 0.5 | 0.5 | 0 |
| Walls | 0.7 | 0.5 | 0.3 | 0.7 | 0.5 | 0.3 | 0.7 | 0.5 | 0.3 | 0 |
| Working plane | 0.2 | 0.2 | 0.2 | 0.2 | 0.2 | 0.2 | 0.2 | 0.2 | 0.2 | 0 |
| ROOM INDEX | UTILIZATION FACTORS (PERCENT) $k(RI) \times RCR = 5$ | | | | | | | | | |
| $k = 0.60$ | 47 | 35 | 27 | 46 | 34 | 27 | 44 | 33 | 27 | 20 |
| 0.80 | 56 | 43 | 35 | 55 | 42 | 35 | 52 | 41 | 34 | 26 |
| 1.00 | 64 | 51 | 43 | 62 | 50 | 42 | 58 | 50 | 41 | 32 |
| 1.25 | 71 | 58 | 50 | 69 | 57 | 49 | 64 | 54 | 47 | 37 |
| 1.50 | 76 | 64 | 55 | 73 | 62 | 54 | 68 | 59 | 52 | 41 |
| 2.00 | 83 | 72 | 64 | 80 | 70 | 62 | 74 | 66 | 59 | 48 |
| 2.50 | 88 | 78 | 70 | 85 | 75 | 68 | 78 | 70 | 64 | 51 |
| 3.00 | 92 | 82 | 75 | 88 | 80 | 73 | 81 | 74 | 69 | 55 |
| 4.00 | 97 | 88 | 82 | 92 | 85 | 79 | 85 | 79 | 74 | 60 |
| 5.00 | 100 | 93 | 87 | 95 | 89 | 84 | 88 | 83 | 78 | 63 |
| ROOM INDEX | UF(total) | | | | | | | | | Direct |
| According to DIN EN 13032-2 2004 | | | Suspended | | | | SHRNOM = 1.25 | | | |

C Range: 0 - 360DEG
 C Interval: 90.0DEG
 Test Speed: HIGH
 Temperature:25.3°C
 Operators:DAMIN
 Test Date:24 April 2026

γ Range: 0 - 180DEG
 γ Interval: 1.0DEG
 Test System:EVERFINE GO-2000B_V1 SYSTEM V2.00.459
 Humidity:65.0%
 Test Distance:7.380m [K=1.0000]
 Remarks:

ISOCANDELA DIAGRAM

| | | |
|--|-------|------------------|
| Test:U:119.93V I:0.1424A P:16.014W PF:0.9376 Freq:59.98Hz Lamp Flux:995.65x1 lm | | |
| NAME: WS14-033B-BN 16W 27K | TYPE: | WEIGHT: |
| SPEC.: | DIM.: | SERIAL No.: 1 |
| MFR.: EVERFINE | SUR.: | Shielding Angle: |

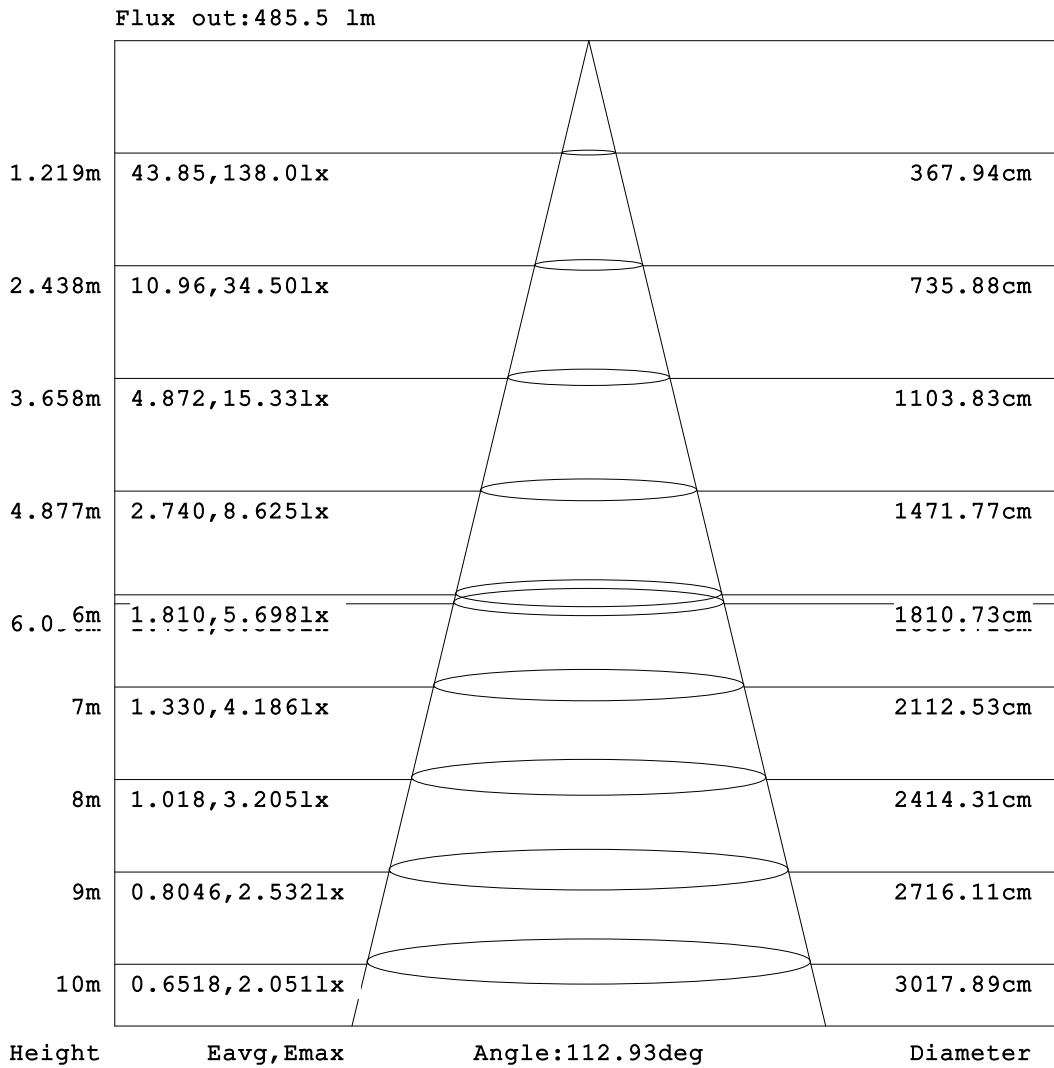


C Range: 0 - 360DEG
C Interval: 90.0DEG
Test Speed: HIGH
Temperature:25.3 °C
Operators:DAMIN
Test Date:24 April 2026

γ Range: 0 - 180DEG
γ Interval: 1.0DEG
Test System:EVERFINE GO-2000B_V1 SYSTEM V2.00.459
Humidity:65.0%
Test Distance:7.380m [K=1.0000]
Remarks:

AAI Figure

| | | |
|--|-------|------------------|
| Test:U:119.93V I:0.1424A P:16.014W PF:0.9376 Freq:59.98Hz Lamp Flux:995.65x1 lm | | |
| NAME: WS14-033B-BN 16W 27K | TYPE: | WEIGHT: |
| SPEC.: | DIM.: | SERIAL No.: 1 |
| MFR.: EVERFINE | SUR.: | Shielding Angle: |



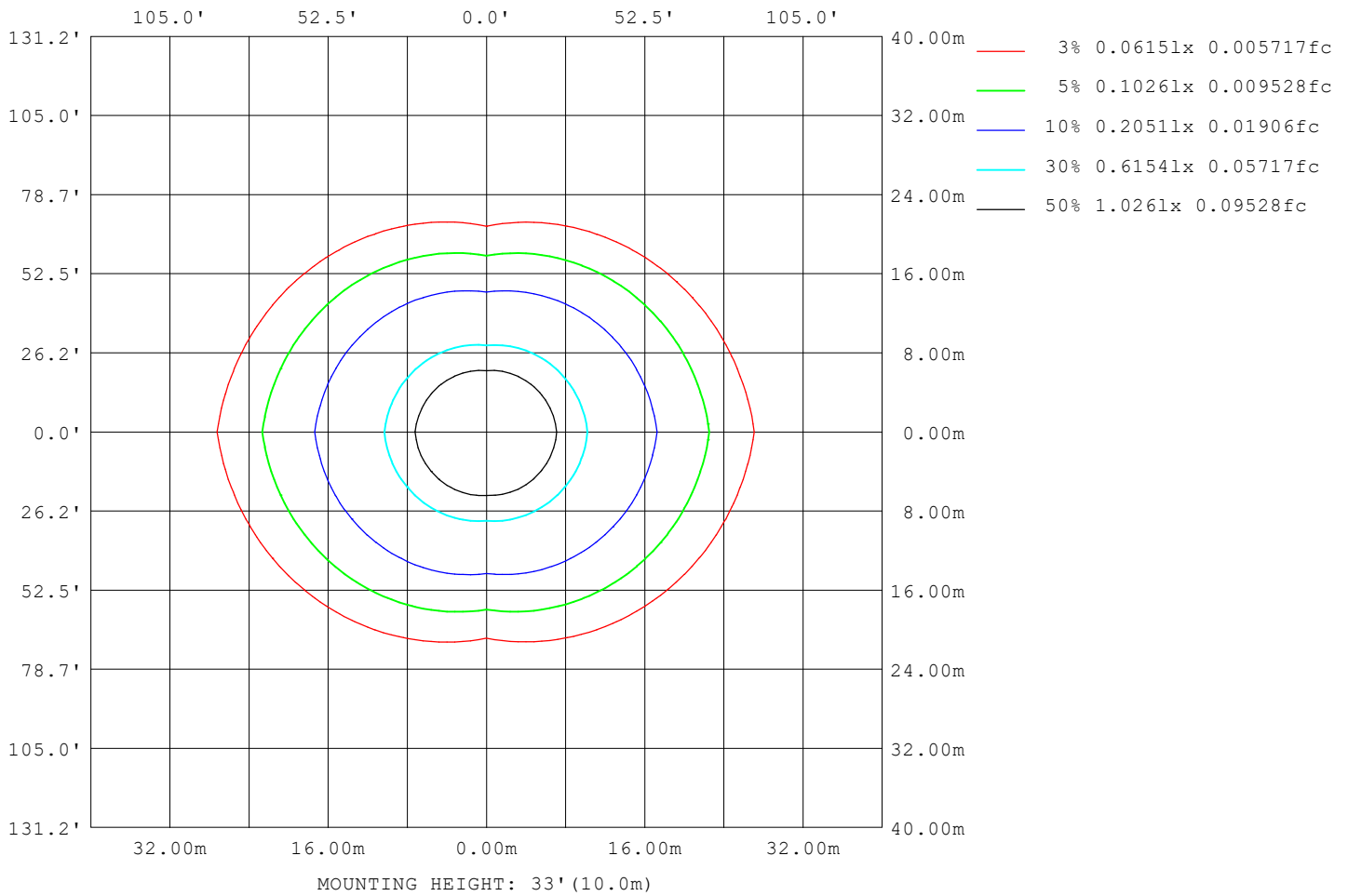
Note:The Curves indicate the illuminated area and the average illumination when the luminaire is at different distance.

C Range: 0 - 360DEG
 C Interval: 90.0DEG
 Test Speed: HIGH
 Temperature:25.3°C
 Operators:DAMIN
 Test Date:24 April 2026

γ Range: 0 - 180DEG
 γ Interval: 1.0DEG
 Test System:EVERFINE GO-2000B_V1 SYSTEM V2.00.459
 Humidity:65.0%
 Test Distance:7.380m [K=1.0000]
 Remarks:

ISOLUX DIAGRAM

| | | |
|--|-------|------------------|
| Test:U:119.93V I:0.1424A P:16.014W PF:0.9376 Freq:59.98Hz Lamp Flux:995.65x1 lm | | |
| NAME: WS14-033B-BN 16W 27K | TYPE: | WEIGHT: |
| SPEC.: | DIM.: | SERIAL No.: 1 |
| MFR.: EVERFINE | SUR.: | Shielding Angle: |



C Range: 0 - 360DEG
 C Interval: 90.0DEG
 Test Speed: HIGH
 Temperature:25.3 °C
 Operators:DAMIN
 Test Date:24 April 2026

γ Range: 0 - 180DEG
 γ Interval: 1.0DEG
 Test System:EVERFINE GO-2000B_V1 SYSTEM V2.00.459
 Humidity:65.0%
 Test Distance:7.380m [K=1.0000]
 Remarks:

LED Avg.L Report

| | | |
|--|-------|------------------|
| Test:U:119.93V I:0.1424A P:16.014W PF:0.9376 Freq:59.98Hz Lamp Flux:995.65x1 lm | | |
| NAME: WS14-033B-BN 16W 27K | TYPE: | WEIGHT: |
| SPEC.: | DIM.: | SERIAL No.: 1 |
| MFR.: EVERFINE | SUR.: | Shielding Angle: |

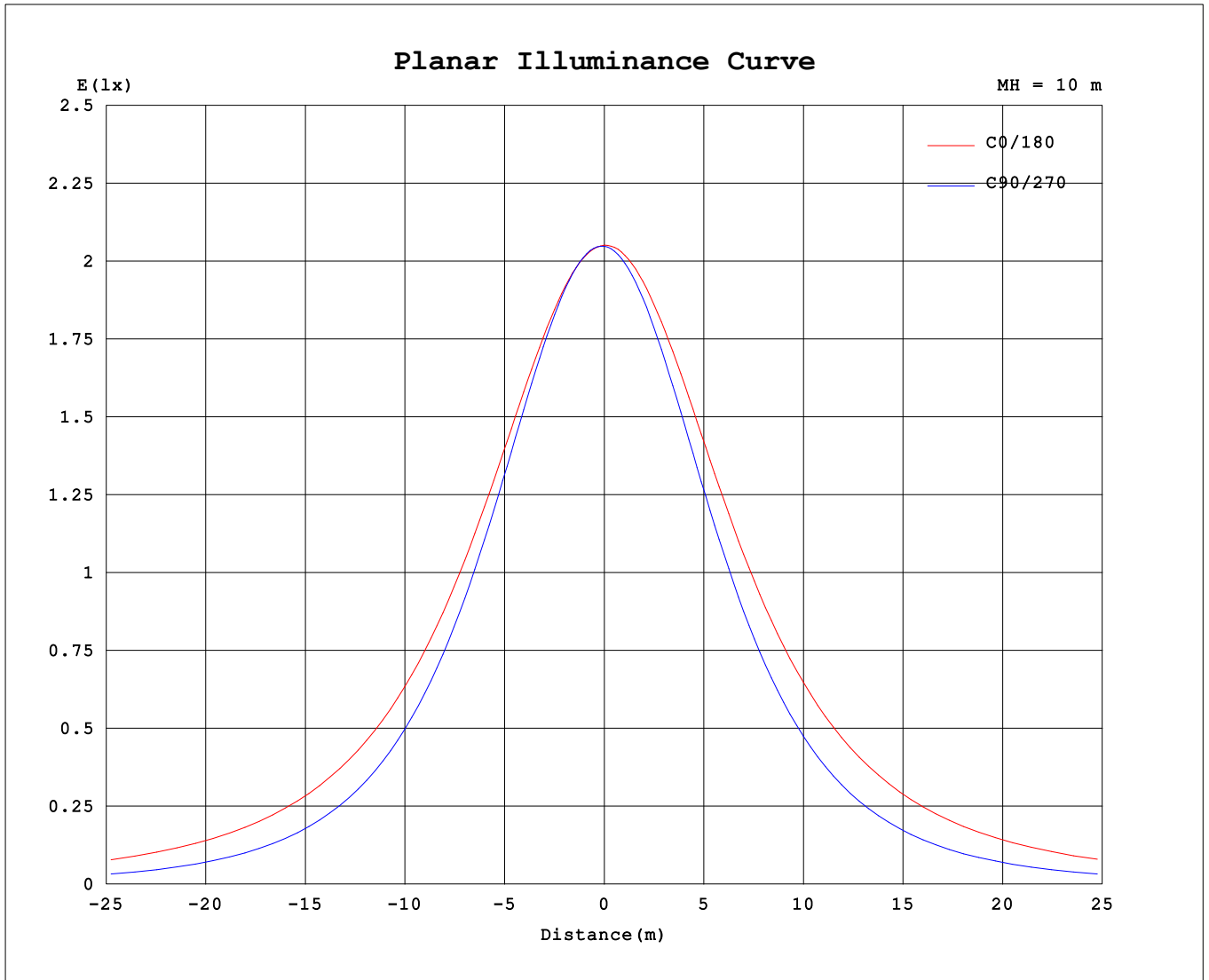
| AvgL | cd/m2 |
|------------------|-------|
| L_0~180 (65) av | 3695 |
| L_0~180 (75) av | 5435 |
| L_0~180 (85) av | 14242 |
| L_90~270 (65) av | 1742 |
| L_90~270 (75) av | 1492 |
| L_90~270 (85) av | 1204 |
| L_45 (65) av | 2476 |
| L_45 (75) av | 2973 |
| L_45 (85) av | 6095 |

Standard: GB/T 29293-2012

C Range: 0 - 360DEG
 C Interval: 90.0DEG
 Test Speed: HIGH
 Temperature:25.3℃
 Operators:DAMIN
 Test Date:24 April 2026

γ Range: 0 - 180DEG
 γ Interval: 1.0DEG
 Test System:EVERFINE GO-2000B_V1 SYSTEM V2.00.459
 Humidity:65.0%
 Test Distance:7.380m [K=1.0000]
 Remarks:

Planar Illuminance Curve



C Range: 0 - 360DEG
 C Interval: 90.0DEG
 Test Speed: HIGH
 Temperature: 25.3 °C
 Operators: DAMIN
 Test Date: 24 April 2026

γ Range: 0 - 180DEG
 γ Interval: 1.0DEG
 Test System: EVERFINE GO-2000B_V1 SYSTEM V2.00.459
 Humidity: 65.0%
 Test Distance: 7.380m [K=1.0000]
 Remarks:

LUMINOUS DISTRIBUTION INTENSITY DATA

| | | |
|--|-------|------------------|
| Test:U:119.93V I:0.1424A P:16.014W PF:0.9376 Freq:59.98Hz Lamp Flux:995.65x1 lm | | |
| NAME: WS14-033B-BN 16W 27K | TYPE: | WEIGHT: |
| SPEC.: | DIM.: | SERIAL No.: 1 |
| MFR.: EVERFINE | SUR.: | Shielding Angle: |

Table--1

UNIT: cd

| C (DEG) \ γ (DEG) | 0 | 90 | 180 | 270 | | | | | | | | | | | | | | | |
|-------------------|------|------|------|------|--|--|--|--|--|--|--|--|--|--|--|--|--|--|--|
| 0 | 205 | 205 | 205 | 205 | | | | | | | | | | | | | | | |
| 5 | 205 | 205 | 205 | 203 | | | | | | | | | | | | | | | |
| 10 | 203 | 203 | 205 | 200 | | | | | | | | | | | | | | | |
| 15 | 202 | 199 | 204 | 195 | | | | | | | | | | | | | | | |
| 20 | 199 | 194 | 202 | 188 | | | | | | | | | | | | | | | |
| 25 | 196 | 187 | 200 | 180 | | | | | | | | | | | | | | | |
| 30 | 193 | 178 | 196 | 170 | | | | | | | | | | | | | | | |
| 35 | 189 | 167 | 193 | 159 | | | | | | | | | | | | | | | |
| 40 | 185 | 155 | 188 | 147 | | | | | | | | | | | | | | | |
| 45 | 180 | 141 | 183 | 134 | | | | | | | | | | | | | | | |
| 50 | 174 | 126 | 178 | 120 | | | | | | | | | | | | | | | |
| 55 | 168 | 110 | 171 | 105 | | | | | | | | | | | | | | | |
| 60 | 162 | 92.1 | 164 | 89.6 | | | | | | | | | | | | | | | |
| 65 | 155 | 73.8 | 157 | 73.4 | | | | | | | | | | | | | | | |
| 70 | 147 | 55.1 | 150 | 56.8 | | | | | | | | | | | | | | | |
| 75 | 140 | 36.8 | 142 | 40.4 | | | | | | | | | | | | | | | |
| 80 | 132 | 20.4 | 133 | 24.9 | | | | | | | | | | | | | | | |
| 85 | 124 | 8.63 | 124 | 12.4 | | | | | | | | | | | | | | | |
| 90 | 115 | 4.71 | 115 | 5.24 | | | | | | | | | | | | | | | |
| 95 | 107 | 4.99 | 106 | 3.56 | | | | | | | | | | | | | | | |
| 100 | 86.5 | 5.55 | 79.5 | 3.44 | | | | | | | | | | | | | | | |
| 105 | 57.2 | 6.36 | 41.3 | 3.56 | | | | | | | | | | | | | | | |
| 110 | 66.2 | 7.09 | 53.7 | 4.02 | | | | | | | | | | | | | | | |
| 115 | 64.8 | 7.99 | 62.7 | 4.40 | | | | | | | | | | | | | | | |
| 120 | 58.4 | 8.93 | 56.0 | 4.90 | | | | | | | | | | | | | | | |
| 125 | 52.3 | 9.82 | 49.7 | 5.07 | | | | | | | | | | | | | | | |
| 130 | 46.3 | 10.7 | 43.6 | 4.33 | | | | | | | | | | | | | | | |
| 135 | 40.9 | 11.5 | 38.2 | 3.91 | | | | | | | | | | | | | | | |
| 140 | 36.0 | 12.3 | 33.3 | 4.95 | | | | | | | | | | | | | | | |
| 145 | 29.2 | 12.9 | 26.8 | 4.89 | | | | | | | | | | | | | | | |
| 150 | 13.9 | 13.6 | 12.4 | 4.03 | | | | | | | | | | | | | | | |
| 155 | 12.9 | 14.1 | 11.0 | 4.09 | | | | | | | | | | | | | | | |
| 160 | 11.9 | 13.8 | 10.5 | 4.17 | | | | | | | | | | | | | | | |
| 165 | 13.2 | 12.6 | 11.5 | 4.29 | | | | | | | | | | | | | | | |
| 170 | 11.7 | 11.8 | 10.9 | 5.27 | | | | | | | | | | | | | | | |
| 175 | 9.97 | 12.2 | 9.42 | 8.00 | | | | | | | | | | | | | | | |
| 180 | 10.9 | 10.8 | 10.9 | 10.8 | | | | | | | | | | | | | | | |

C Range: 0 - 360DEG
 C Interval: 90.0DEG
 Test Speed: HIGH
 Temperature:25.3℃
 Operators:DAMIN
 Test Date:24 April 2026

γ Range: 0 - 180DEG
 γ Interval: 1.0DEG
 Test System:EVERFINE GO-2000B_V1 SYSTEM V2.00.459
 Humidity:65.0%
 Test Distance:7.380m [K=1.0000]
 Remarks: