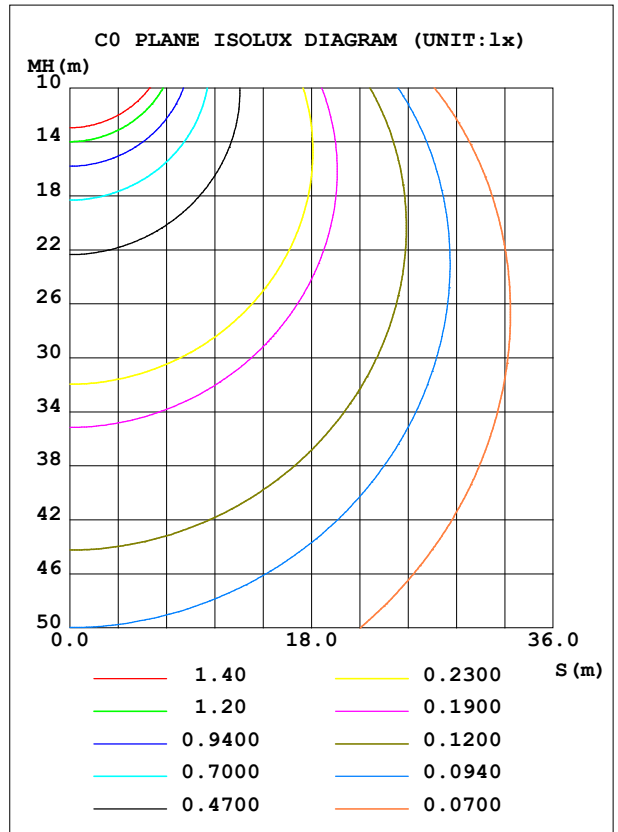
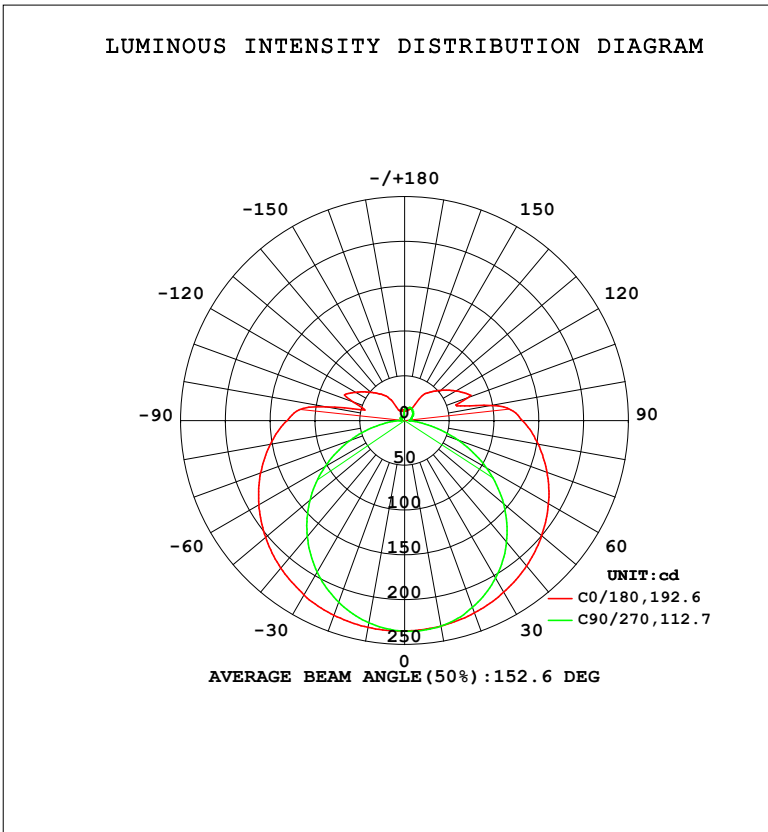


LUMINAIRE PHOTOMETRIC TEST REPORT

Test:U:119.95V I:0.1443A P:16.294W PF:0.9412 Freq:59.98Hz Lamp Flux:1138.55x1 lm		
NAME: WS14-033B-BN 16W 35K	TYPE:	WEIGHT:
SPEC.:	DIM.:	SERIAL No.: 1
MFR.: EVERFINE	SUR.:	Shielding Angle:

DATA OF LAMP		PHOTOMETRIC DATA				Eff: 69.88 lm/W
MODEL	3500K	I _{max} (cd)	235.5	S/MH (C0/180)	1.44	
NOMINAL POWER (W)	16	LOR (%)	100.0	S/MH (C90/270)	1.24	
RATED VOLTAGE (V)	120	TOTAL FLUX (lm)	1138.6	η UP, DN (C0-180)	10.2, 40.5	
NOMINAL FLUX (lm)	1138.55	CIE CLASS	SEMI-D.	η UP, DN (C180-360)	8.8, 40.5	
LAMPS INSIDE	1	η up (%)	19.1	CIBSE SHR NOM	1.50	
TEST VOLTAGE (V)	120	η down (%)	80.9	CIBSE SHR MAX	1.50	



C Range: 0 - 360DEG
 C Interval: 90.0DEG
 Test Speed: HIGH
 Temperature: 25.3 °C
 Operators: DAMIN
 Test Date: 24 April 2026

γ Range: 0 - 180DEG
 γ Interval: 1.0DEG
 Test System: EVERFINE GO-2000B_V1 SYSTEM V2.00.459
 Humidity: 65.0%
 Test Distance: 7.380m [K=1.0000]
 Remarks:

ZONAL FLUX DIAGRAM

ZONAL FLUX DIAGRAM:

γ	C0	C90	C180	C270				γ	Φ zone	Φ total	%lum, lamp
10	233.0	233.0	234.4	229.3				0- 10	22.31	22.31	1.96,1.96
20	228.3	221.7	231.2	215.7				10- 20	64.74	87.06	7.65,7.65
30	221.3	203.2	224.8	195.4				20- 30	100.8	187.9	16.5,16.5
40	211.8	177.2	215.0	169.1				30- 40	127.0	314.9	27.7,27.7
50	199.8	144.2	202.8	137.8				40- 50	141.1	456.0	40.1,40.1
60	185.5	105.6	188.0	102.5				50- 60	142.0	598.0	52.5,52.5
70	169.2	63.22	171.2	64.87				60- 70	130.3	728.3	64,64
80	151.3	23.48	152.2	28.51				70- 80	108.6	836.9	73.5,73.5
90	131.5	5.368	131.3	6.010				80- 90	84.69	921.5	80.9,80.9
100	98.67	6.281	90.17	3.922				90-100	67.61	989.2	86.9,86.9
110	75.12	8.021	60.55	4.580				100-110	37.64	1027	90.2,90.2
120	66.40	10.16	63.46	5.596				110-120	38.67	1065	93.6,93.6
130	52.69	12.14	49.38	4.901				120-130	29.74	1095	96.2,96.2
140	40.91	13.96	37.72	5.628				130-140	20.95	1116	98,98
150	15.49	15.43	13.87	4.567				140-150	12.62	1129	99.1,99.1
160	13.31	15.64	11.81	4.633				150-160	5.492	1134	99.6,99.6
170	13.23	13.35	12.34	5.929				160-170	3.234	1138	99.9,99.9
180	12.34	12.22	12.32	12.22				170-180	1.053	1139	100,100
DEG	LUMINOUS INTENSITY:cd								UNIT:lm		

Conical surface Flux(90deg): 384.51 lm

%lum = 33.8%

%lamp = 33.8%

Conical surface Flux(120deg): 597.99 lm

%lum = 52.5%

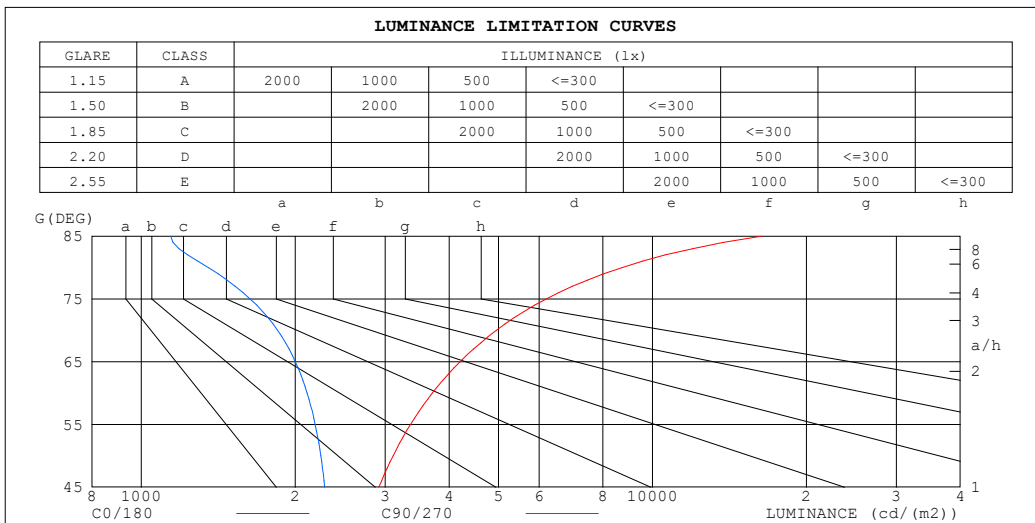
%lamp = 52.5%

C Range: 0 - 360DEG
 C Interval: 90.0DEG
 Test Speed: HIGH
 Temperature:25.3°C
 Operators:DAMIN
 Test Date:24 April 2026

γ Range: 0 - 180DEG
 γ Interval: 1.0DEG
 Test System:EVERFINE GO-2000B_V1 SYSTEM V2.00.459
 Humidity:65.0%
 Test Distance:7.380m [K=1.0000]
 Remarks:

LUMINANCE LIMITATION CURVES

Test:U:119.95V I:0.1443A P:16.294W PF:0.9412 Freq:59.98Hz Lamp Flux:1138.55x1 lm		
NAME: WS14-033B-BN 16W 35K	TYPE:	WEIGHT:
SPEC.:	DIM.:	SERIAL No.: 1
MFR.: EVERFINE	SUR.:	Shielding Angle:



LUMINANCE cd/(m2)		
G (DEG)	C0/180	C90/270
85	16296	1142
80	8714	1352
75	6196	1633
70	4946	1848
65	4204	2001
60	3710	2111
55	3363	2188
50	3108	2244
45	2916	2284

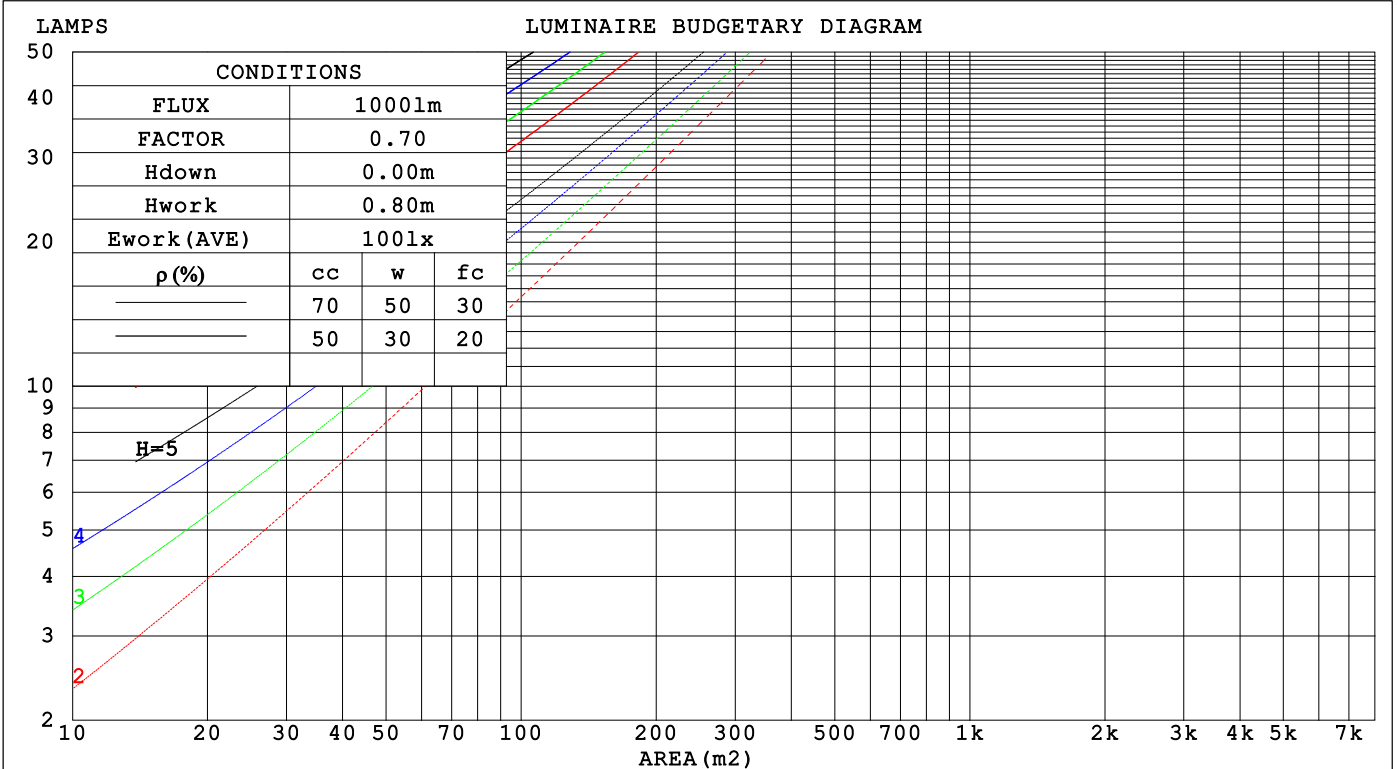
C Range: 0 - 360DEG
 C Interval: 90.0DEG
 Test Speed: HIGH
 Temperature: 25.3 °C
 Operators: DAMIN
 Test Date: 24 April 2026

γ Range: 0 - 180DEG
 γ Interval: 1.0DEG
 Test System: EVERFINE GO-2000B_V1 SYSTEM V2.00.459
 Humidity: 65.0%
 Test Distance: 7.380m [K=1.0000]
 Remarks:

CU AND LUMINAIRE BUDGETARY ESTIMATE DIAGRAM

Test:U:119.95V I:0.1443A P:16.294W PF:0.9412 Freq:59.98Hz Lamp Flux:1138.55x1 lm		
NAME: WS14-033B-BN 16W 35K	TYPE:	WEIGHT:
SPEC.:	DIM.:	SERIAL No.: 1
MFR.: EVERFINE	SUR.:	Shielding Angle:

ρcc	80%			70%			50%			30%			10%			0
	ρw	30%	10%	50%	30%	10%	50%	30%	10%	50%	30%	10%	50%	30%	10%	
ρfc	20%			20%			20%			20%			20%			0
RCR	RCR:Room Cavity Ratio															
	Coefficients of Utilization(CU)															
0.0	1.15	1.15	1.15	1.10	1.10	1.10	1.01	1.01	1.01	.92	.92	.92	.85	.85	.85	.81
1.0	.95	.90	.85	.91	.86	.82	.83	.79	.76	.76	.73	.70	.69	.67	.65	.61
2.0	.81	.74	.67	.78	.71	.65	.71	.65	.60	.65	.60	.56	.59	.55	.52	.49
3.0	.71	.61	.54	.67	.59	.53	.62	.55	.49	.56	.51	.46	.51	.47	.43	.40
4.0	.62	.52	.45	.59	.51	.44	.54	.47	.41	.50	.43	.39	.45	.40	.36	.33
5.0	.55	.45	.38	.53	.44	.37	.48	.41	.35	.44	.38	.33	.40	.35	.31	.28
6.0	.49	.40	.33	.47	.38	.32	.43	.36	.30	.40	.33	.29	.36	.31	.27	.24
7.0	.44	.35	.29	.42	.34	.28	.39	.32	.26	.36	.30	.25	.33	.28	.24	.21
8.0	.40	.31	.25	.39	.30	.25	.36	.29	.23	.33	.27	.22	.30	.25	.21	.19
9.0	.37	.28	.23	.35	.27	.22	.33	.26	.21	.30	.24	.20	.28	.23	.19	.17
10.0	.34	.26	.20	.33	.25	.20	.30	.23	.19	.28	.22	.18	.26	.21	.17	.15



C Range: 0 - 360DEG
 C Interval: 90.0DEG
 Test Speed: HIGH
 Temperature:25.3 °C
 Operators:DAMIN
 Test Date:24 April 2026

γ Range: 0 - 180DEG
 γ Interval: 1.0DEG
 Test System:EVERFINE GO-2000B_V1 SYSTEM V2.00.459
 Humidity:65.0%
 Test Distance:7.380m [K=1.0000]
 Remarks:

WEC AND CCEC

Test:U:119.95V I:0.1443A P:16.294W PF:0.9412 Freq:59.98Hz Lamp Flux:1138.55x1 lm		
NAME: WS14-033B-BN 16W 35K	TYPE:	WEIGHT:
SPEC.:	DIM.:	SERIAL No.: 1
MFR.: EVERFINE	SUR.:	Shielding Angle:

ρ_{CC}	80%			70%			50%			30%			10%			0
ρ_w	50%	30%	10%	50%	30%	10%	50%	30%	10%	50%	30%	10%	50%	30%	10%	0
ρ_{fc}	20%			20%			20%			20%			20%			0
RCR	RCR:Room Cavity Ratio						Wall Exitance Coefficients(WEC)									
0.0																
1.0	.386	.220	.070	.373	.213	.068	.349	.200	.064	.326	.188	.060	.305	.177	.057	
2.0	.334	.183	.056	.322	.178	.055	.300	.167	.052	.280	.157	.049	.261	.148	.047	
3.0	.297	.158	.047	.286	.153	.046	.266	.144	.044	.248	.136	.042	.231	.128	.040	
4.0	.267	.139	.041	.258	.135	.040	.239	.127	.038	.223	.120	.036	.207	.112	.034	
5.0	.243	.124	.036	.234	.120	.035	.218	.113	.033	.202	.107	.032	.188	.100	.030	
6.0	.222	.111	.032	.214	.108	.031	.199	.102	.030	.185	.096	.028	.172	.091	.027	
7.0	.205	.101	.029	.198	.099	.028	.184	.093	.027	.171	.088	.026	.159	.083	.024	
8.0	.190	.093	.026	.184	.090	.026	.171	.085	.024	.159	.081	.023	.148	.076	.022	
9.0	.177	.086	.024	.171	.083	.023	.159	.079	.022	.148	.074	.021	.138	.070	.020	
10.0	.166	.079	.022	.160	.077	.022	.149	.073	.021	.139	.069	.020	.130	.065	.019	

ρ_{CC}	80%			70%			50%			30%			10%			0
ρ_w	50%	30%	10%	50%	30%	10%	50%	30%	10%	50%	30%	10%	50%	30%	10%	0
ρ_{fc}	20%			20%			20%			20%			20%			0
RCR	RCR:Room Cavity Ratio						Ceiling Cavity Exitance Coefficients(CCEC)									
0.0	.336	.336	.336	.287	.287	.287	.196	.196	.196	.112	.112	.112	.036	.036	.036	
1.0	.332	.302	.275	.284	.259	.236	.194	.178	.164	.112	.103	.095	.036	.033	.031	
2.0	.325	.279	.240	.279	.240	.208	.191	.166	.145	.110	.097	.085	.035	.031	.028	
3.0	.318	.263	.219	.273	.227	.190	.187	.157	.133	.108	.092	.078	.035	.030	.026	
4.0	.310	.250	.204	.266	.216	.178	.183	.151	.125	.106	.088	.074	.034	.029	.024	
5.0	.302	.240	.195	.260	.208	.169	.179	.145	.120	.104	.085	.071	.033	.028	.023	
6.0	.295	.233	.188	.254	.201	.163	.175	.141	.116	.102	.083	.069	.033	.027	.023	
7.0	.288	.226	.183	.248	.196	.159	.171	.137	.113	.099	.081	.067	.032	.026	.022	
8.0	.281	.220	.179	.242	.191	.156	.168	.134	.110	.097	.079	.066	.032	.026	.022	
9.0	.275	.216	.176	.237	.187	.153	.164	.132	.109	.096	.078	.065	.031	.025	.021	
10.0	.269	.211	.173	.232	.184	.151	.161	.129	.107	.094	.076	.064	.030	.025	.021	

C Range: 0 - 360DEG
 C Interval: 90.0DEG
 Test Speed: HIGH
 Temperature:25.3℃
 Operators:DAMIN
 Test Date:24 April 2026

γ Range: 0 - 180DEG
 γ Interval: 1.0DEG
 Test System:EVERFINE GO-2000B_V1 SYSTEM V2.00.459
 Humidity:65.0%
 Test Distance:7.380m [K=1.0000]
 Remarks:

UGR(Unified Glare Rating) Table

Test:U:119.95V I:0.1443A P:16.294W PF:0.9412 Freq:59.98Hz										
Lamp Flux:1138.55x1 lm										
NAME: WS14-033B-BN 16W 35K					TYPE:			WEIGHT:		
SPEC.:					DIM.:			SERIAL No.: 1		
MFR.: EVERFINE					SUR.:			Shielding Angle:		
ceiling/cavity	0.7	0.7	0.5	0.5	0.3	0.7	0.7	0.5	0.5	0.3
walls	0.5	0.3	0.5	0.3	0.3	0.5	0.3	0.5	0.3	0.3
working plane	0.2	0.2	0.2	0.2	0.2	0.2	0.2	0.2	0.2	0.2
Room dimensions	Viewed crosswise					Viewed endwise				
x = 2H y = 2H	15.8	17.2	16.3	17.7	18.3	13.8	15.2	14.3	15.7	16.3
3H	18.6	19.9	19.2	20.4	21.1	15.3	16.6	15.9	17.1	17.8
4H	20.2	21.4	20.8	22.0	22.6	15.9	17.1	16.5	17.7	18.3
6H	22.0	23.1	22.6	23.7	24.4	16.3	17.4	16.9	18.0	18.7
8H	23.0	24.1	23.6	24.7	25.4	16.4	17.5	17.0	18.1	18.8
12H	24.1	25.2	24.7	25.8	26.5	16.5	17.5	17.1	18.1	18.8
4H 2H	16.3	17.5	16.9	18.1	18.7	14.9	16.1	15.5	16.7	17.3
3H	19.3	20.4	19.9	21.0	21.7	16.7	17.7	17.3	18.3	19.0
4H	21.1	22.0	21.7	22.7	23.4	17.5	18.4	18.1	19.1	19.8
6H	23.1	23.9	23.7	24.6	25.3	18.1	18.9	18.7	19.6	20.3
8H	24.2	25.0	24.9	25.7	26.4	18.3	19.1	18.9	19.7	20.5
12H	25.5	26.2	26.2	26.9	27.7	18.4	19.1	19.1	19.8	20.6
8H 4H	21.3	22.1	22.0	22.8	23.6	18.4	19.2	19.1	19.9	20.7
6H	23.6	24.3	24.3	25.0	25.8	19.4	20.1	20.1	20.8	21.6
8H	24.9	25.5	25.6	26.2	27.1	19.8	20.4	20.5	21.1	22.0
12H	26.5	27.0	27.2	27.7	28.6	20.2	20.7	20.9	21.4	22.3
12H 4H	21.3	22.1	22.0	22.8	23.6	18.7	19.5	19.4	20.2	21.0
6H	23.7	24.3	24.4	25.0	25.8	19.9	20.5	20.6	21.3	22.1
8H	25.1	25.6	25.8	26.3	27.2	20.5	21.1	21.3	21.8	22.7
Variations with the observer position at spacings(CIE Pub.117):										
S = 1.0H	+ 0.1 / - 0.1					+ 0.1 / - 0.1				
1.5H	+ 0.2 / - 0.2					+ 0.2 / - 0.3				
2.0H	+ 0.2 / - 0.3					+ 0.3 / - 0.5				

CIE Pub.117, 1139 lm Total Lamp Luminous Flux Correct (8log(F/F0) = 0.5)
 Area: 0.1 m2

C Range: 0 - 360DEG	γ Range: 0 - 180DEG
C Interval: 90.0DEG	γ Interval: 1.0DEG
Test Speed: HIGH	Test System:EVERFINE GO-2000B_V1 SYSTEM V2.00.459
Temperature:25.3℃	Humidity:65.0%
Operators:DAMIN	Test Distance:7.380m [K=1.0000]
Test Date:24 April 2026	Remarks:

UTILIZATION FACTORS TABLE

Test:U:119.95V I:0.1443A P:16.294W PF:0.9412 Freq:59.98Hz Lamp Flux:1138.55x1 lm		
NAME: WS14-033B-BN 16W 35K	TYPE:	WEIGHT:
SPEC.:	DIM.:	SERIAL No.: 1
MFR.: EVERFINE	SUR.:	Shielding Angle:

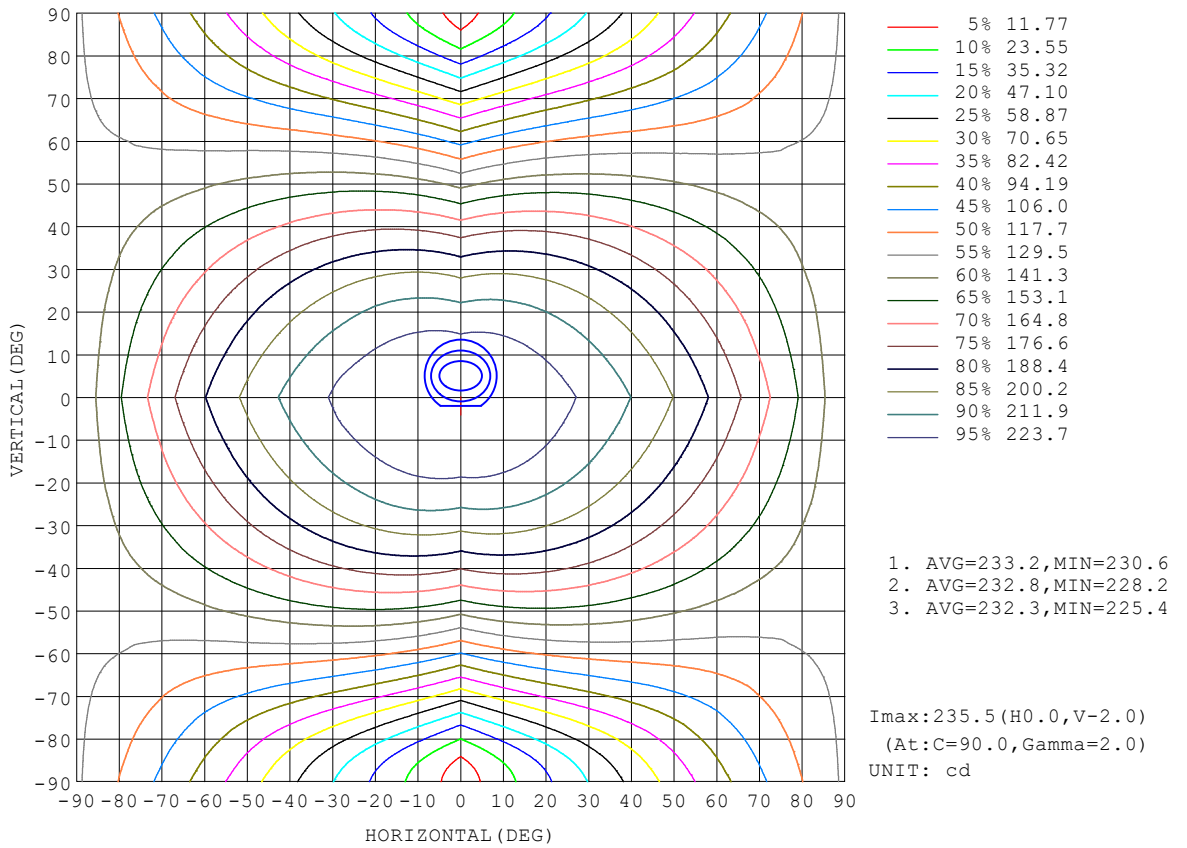
REFLECTANCE										
Ceiling	0.8	0.8	0.8	0.7	0.7	0.7	0.5	0.5	0.5	0
Walls	0.7	0.5	0.3	0.7	0.5	0.3	0.7	0.5	0.3	0
Working plane	0.2	0.2	0.2	0.2	0.2	0.2	0.2	0.2	0.2	0
ROOM INDEX	UTILIZATION FACTORS (PERCENT) $k(RI) \times RCR = 5$									
$k = 0.60$	47	35	27	46	34	27	44	33	27	20
0.80	56	43	35	55	43	35	52	41	34	26
1.00	64	51	43	62	50	42	58	50	41	32
1.25	71	58	50	69	57	49	64	54	47	37
1.50	76	64	55	73	62	54	68	59	52	41
2.00	83	72	64	80	70	63	74	66	60	48
2.50	88	78	70	85	75	68	78	70	64	51
3.00	92	82	75	88	80	73	81	74	69	55
4.00	97	89	82	93	85	79	85	79	74	60
5.00	100	93	87	95	89	84	88	83	78	63
ROOM INDEX	UF(total)									Direct
According to DIN EN 13032-2 2004			Suspended				SHRNOM = 1.25			

C Range: 0 - 360DEG
 C Interval: 90.0DEG
 Test Speed: HIGH
 Temperature:25.3°C
 Operators:DAMIN
 Test Date:24 April 2026

γ Range: 0 - 180DEG
 γ Interval: 1.0DEG
 Test System:EVERFINE GO-2000B_V1 SYSTEM V2.00.459
 Humidity:65.0%
 Test Distance:7.380m [K=1.0000]
 Remarks:

ISOCANDELA DIAGRAM

Test:U:119.95V I:0.1443A P:16.294W PF:0.9412 Freq:59.98Hz Lamp Flux:1138.55x1 lm		
NAME: WS14-033B-BN 16W 35K	TYPE:	WEIGHT:
SPEC.:	DIM.:	SERIAL No.: 1
MFR.: EVERFINE	SUR.:	Shielding Angle:

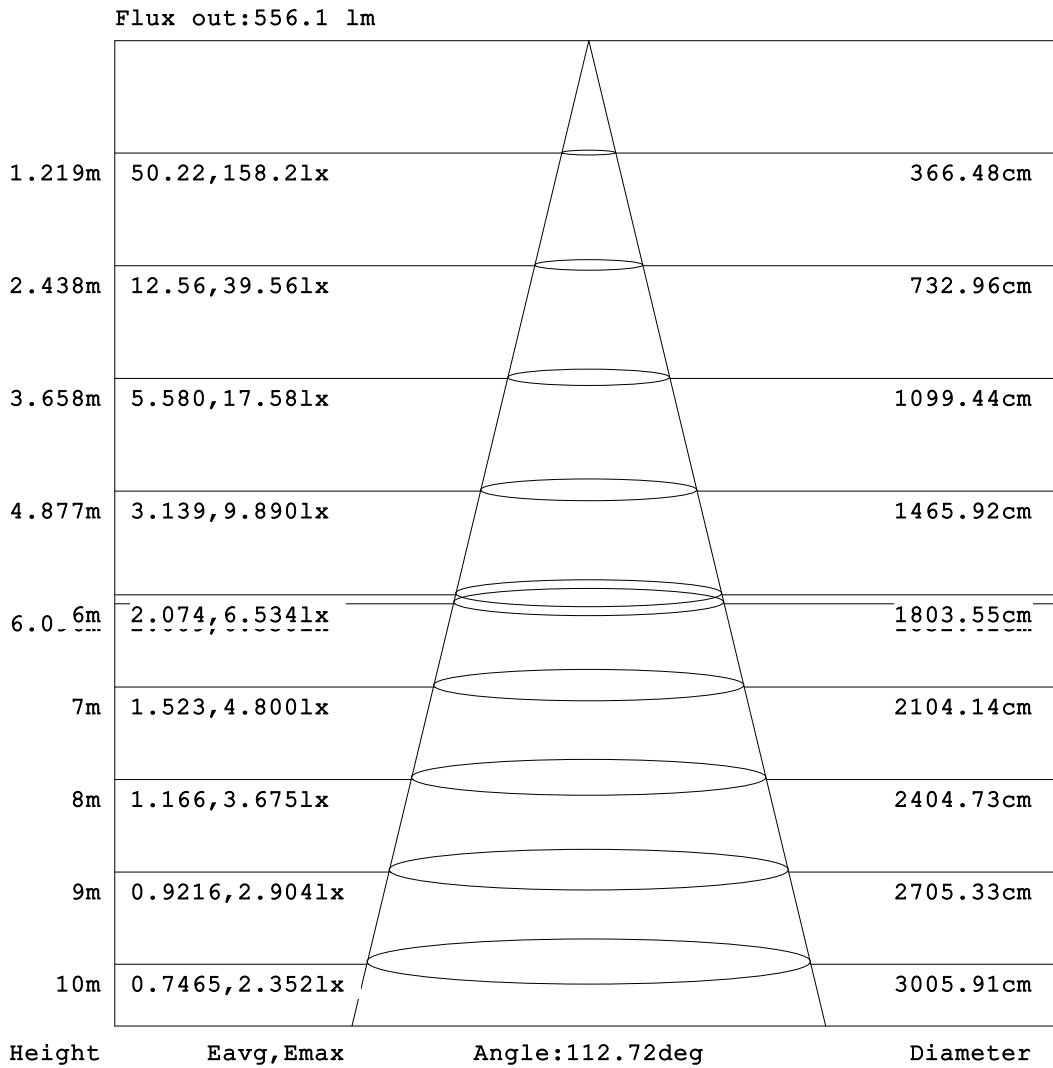


C Range: 0 - 360DEG
C Interval: 90.0DEG
Test Speed: HIGH
Temperature: 25.3 °C
Operators: DAMIN
Test Date: 24 April 2026

γ Range: 0 - 180DEG
γ Interval: 1.0DEG
Test System: EVERFINE GO-2000B_V1 SYSTEM V2.00.459
Humidity: 65.0%
Test Distance: 7.380m [K=1.0000]
Remarks:

AAI Figure

Test:U:119.95V I:0.1443A P:16.294W PF:0.9412 Freq:59.98Hz Lamp Flux:1138.55x1 lm		
NAME: WS14-033B-BN 16W 35K	TYPE:	WEIGHT:
SPEC.:	DIM.:	SERIAL No.: 1
MFR.: EVERFINE	SUR.:	Shielding Angle:



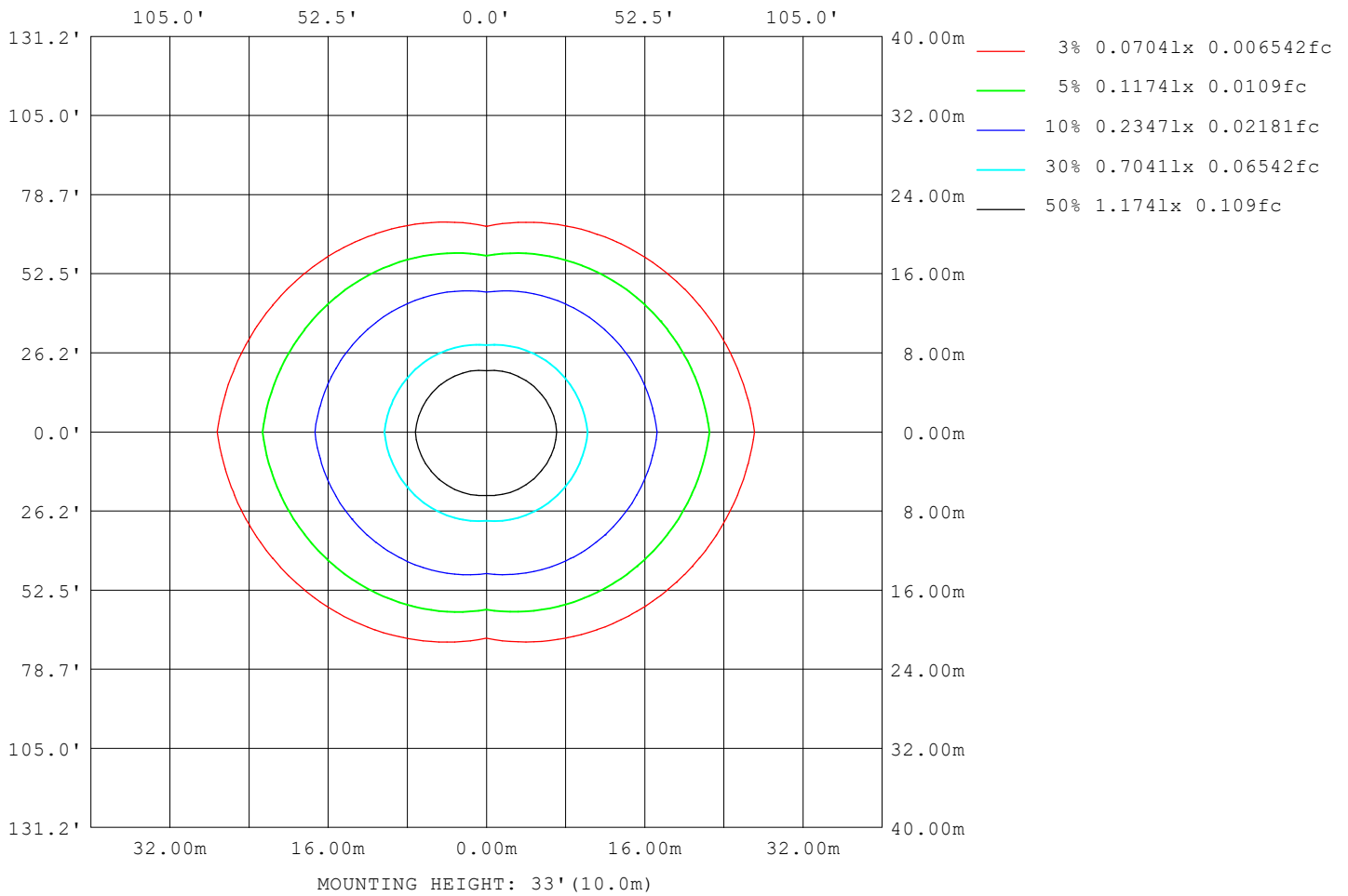
Note:The Curves indicate the illuminated area and the average illumination when the luminaire is at different distance.

C Range: 0 - 360DEG
C Interval: 90.0DEG
Test Speed: HIGH
Temperature:25.3°C
Operators:DAMIN
Test Date:24 April 2026

γ Range: 0 - 180DEG
γ Interval: 1.0DEG
Test System:EVERFINE GO-2000B_V1 SYSTEM V2.00.459
Humidity:65.0%
Test Distance:7.380m [K=1.0000]
Remarks:

ISOLUX DIAGRAM

Test:U:119.95V I:0.1443A P:16.294W PF:0.9412 Freq:59.98Hz Lamp Flux:1138.55x1 lm		
NAME: WS14-033B-BN 16W 35K	TYPE:	WEIGHT:
SPEC.:	DIM.:	SERIAL No.: 1
MFR.: EVERFINE	SUR.:	Shielding Angle:



C Range: 0 - 360DEG
 C Interval: 90.0DEG
 Test Speed: HIGH
 Temperature:25.3 °C
 Operators:DAMIN
 Test Date:24 April 2026

γ Range: 0 - 180DEG
 γ Interval: 1.0DEG
 Test System:EVERFINE GO-2000B_V1 SYSTEM V2.00.459
 Humidity:65.0%
 Test Distance:7.380m [K=1.0000]
 Remarks:

LED Avg.L Report

Test:U:119.95V I:0.1443A P:16.294W PF:0.9412 Freq:59.98Hz Lamp Flux:1138.55x1 lm		
NAME: WS14-033B-BN 16W 35K	TYPE:	WEIGHT:
SPEC.:	DIM.:	SERIAL No.: 1
MFR.: EVERFINE	SUR.:	Shielding Angle:

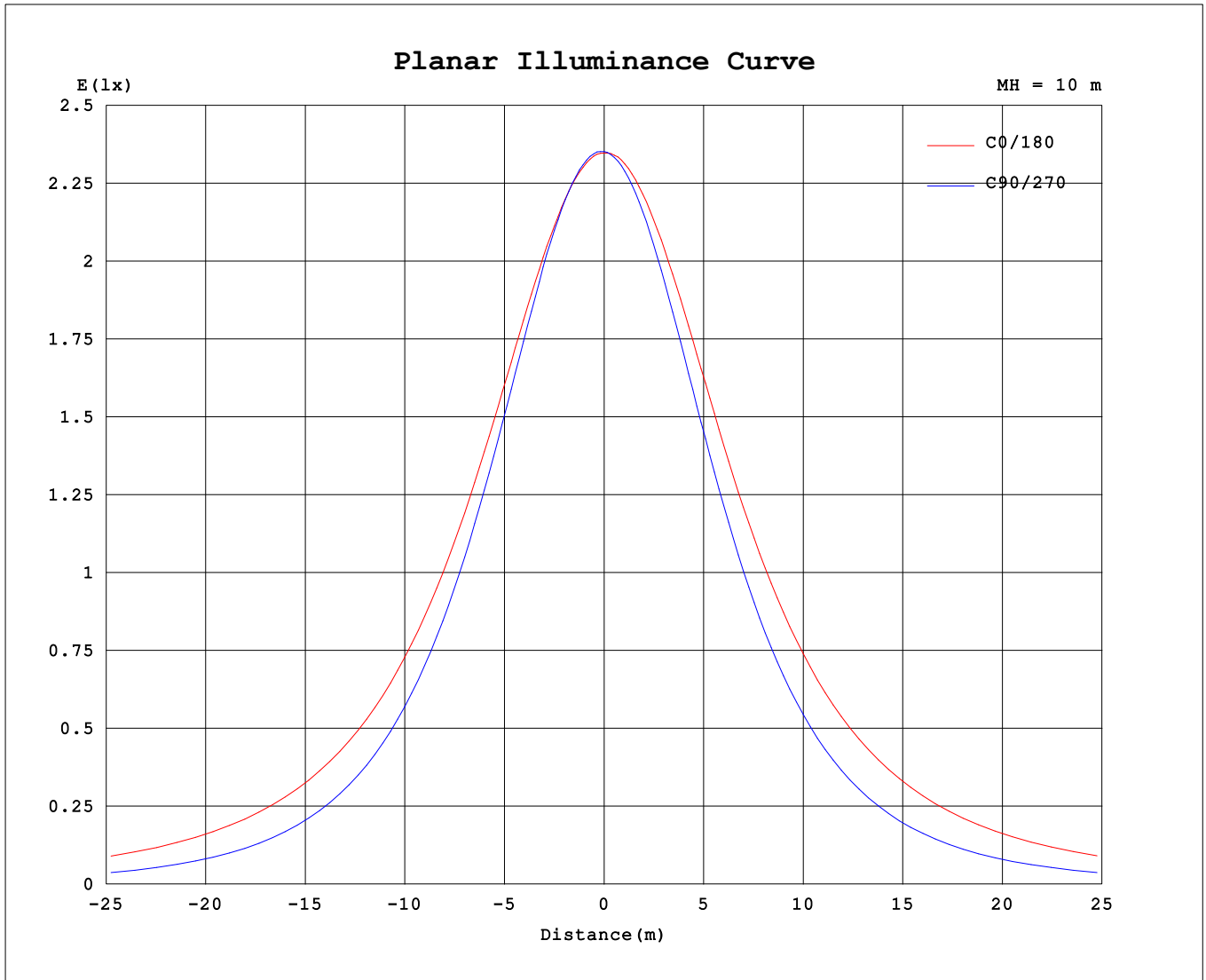
AvgL	cd/m2
L_0~180 (65) av	4230
L_0~180 (75) av	6224
L_0~180 (85) av	16312
L_90~270 (65) av	1993
L_90~270 (75) av	1708
L_90~270 (85) av	1380
L_45 (65) av	2833
L_45 (75) av	3403
L_45 (85) av	6981

Standard: GB/T 29293-2012

C Range: 0 - 360DEG
 C Interval: 90.0DEG
 Test Speed: HIGH
 Temperature:25.3℃
 Operators:DAMIN
 Test Date:24 April 2026

γ Range: 0 - 180DEG
 γ Interval: 1.0DEG
 Test System:EVERFINE GO-2000B_V1 SYSTEM V2.00.459
 Humidity:65.0%
 Test Distance:7.380m [K=1.0000]
 Remarks:

Planar Illuminance Curve



C Range: 0 - 360DEG
 C Interval: 90.0DEG
 Test Speed: HIGH
 Temperature: 25.3 °C
 Operators: DAMIN
 Test Date: 24 April 2026

γ Range: 0 - 180DEG
 γ Interval: 1.0DEG
 Test System: EVERFINE GO-2000B_V1 SYSTEM V2.00.459
 Humidity: 65.0%
 Test Distance: 7.380m [K=1.0000]
 Remarks:

LUMINOUS DISTRIBUTION INTENSITY DATA

Test:U:119.95V I:0.1443A P:16.294W PF:0.9412 Freq:59.98Hz Lamp Flux:1138.55x1 lm		
NAME: WS14-033B-BN 16W 35K	TYPE:	WEIGHT:
SPEC.:	DIM.:	SERIAL No.: 1
MFR.: EVERFINE	SUR.:	Shielding Angle:

Table--1

UNIT: cd

C (DEG) \ γ (DEG)	0	90	180	270															
0	235	235	235	235															
5	234	235	235	233															
10	233	233	234	229															
15	231	229	233	223															
20	228	222	231	216															
25	225	213	229	206															
30	221	203	225	195															
35	217	191	220	183															
40	212	177	215	169															
45	206	161	209	154															
50	200	144	203	138															
55	193	126	196	120															
60	185	106	188	102															
65	178	84.6	180	83.8															
70	169	63.2	171	64.9															
75	160	42.3	162	46.1															
80	151	23.5	152	28.5															
85	142	9.95	142	14.1															
90	132	5.37	131	6.01															
95	122	5.67	121	4.06															
100	98.7	6.28	90.2	3.92															
105	64.7	7.21	46.1	4.08															
110	75.1	8.02	60.6	4.58															
115	73.7	9.08	71.0	5.03															
120	66.4	10.2	63.5	5.60															
125	59.5	11.2	56.3	5.80															
130	52.7	12.1	49.4	4.90															
135	46.6	13.1	43.2	4.44															
140	40.9	14.0	37.7	5.63															
145	33.2	14.7	30.3	5.57															
150	15.5	15.4	13.9	4.57															
155	14.4	16.1	12.3	4.63															
160	13.3	15.6	11.8	4.63															
165	15.0	14.3	12.9	4.86															
170	13.2	13.4	12.3	5.93															
175	11.2	13.8	10.6	9.01															
180	12.3	12.2	12.3	12.2															

C Range: 0 - 360DEG
 C Interval: 90.0DEG
 Test Speed: HIGH
 Temperature:25.3℃
 Operators:DAMIN
 Test Date:24 April 2026

γ Range: 0 - 180DEG
 γ Interval: 1.0DEG
 Test System:EVERFINE GO-2000B_V1 SYSTEM V2.00.459
 Humidity:65.0%
 Test Distance:7.380m [K=1.0000]
 Remarks: