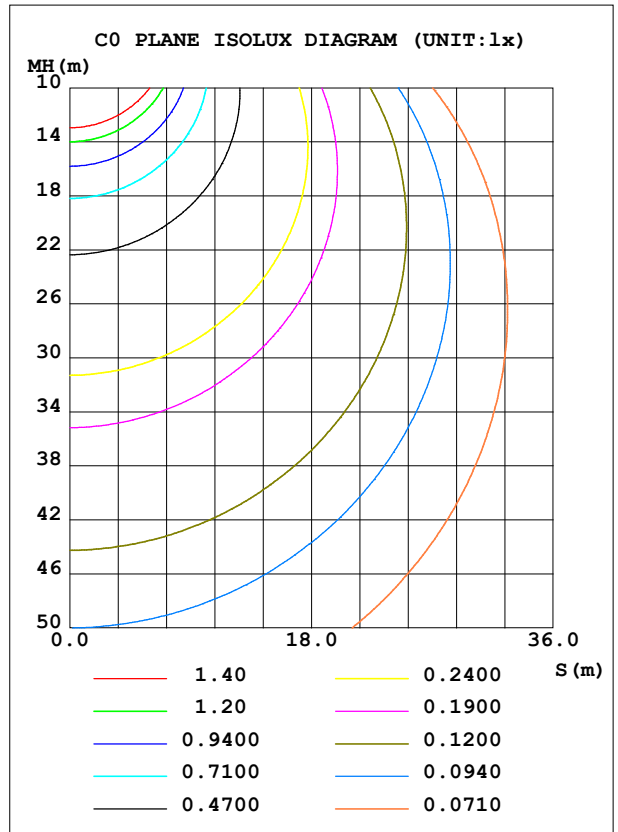
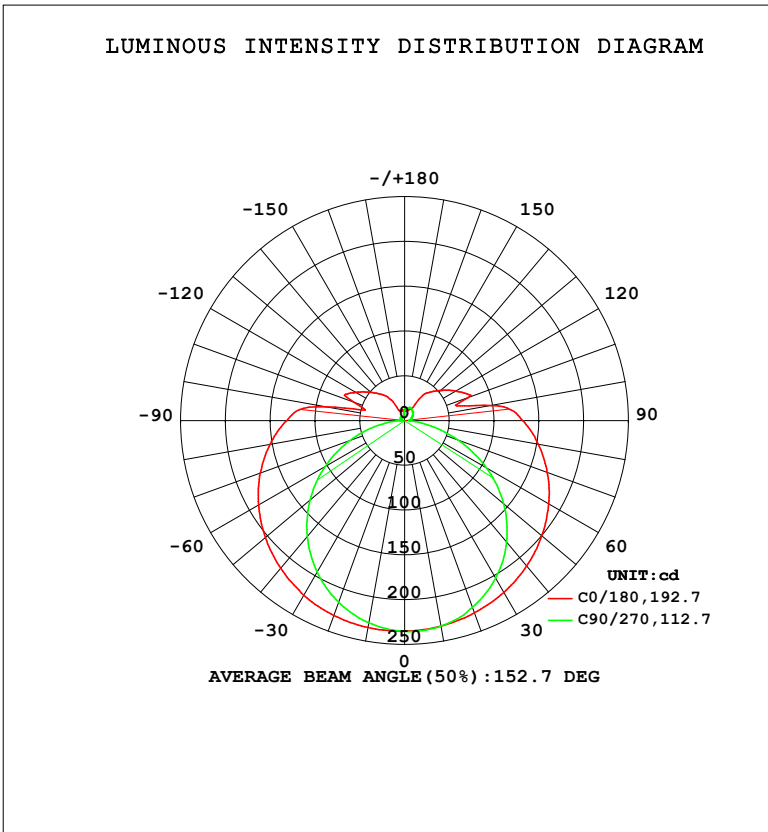


LUMINAIRE PHOTOMETRIC TEST REPORT

Test:U:119.97V I:0.1448A P:16.370W PF:0.9421 Freq:59.98Hz Lamp Flux:1139.08x1 lm		
NAME: WS14-033B-BN 16W 40K	TYPE:	WEIGHT:
SPEC.:	DIM.:	SERIAL No.: 1
MFR.: EVERFINE	SUR.:	Shielding Angle:

DATA OF LAMP		PHOTOMETRIC DATA				Eff: 69.59 lm/W
MODEL	4000K	I _{max} (cd)	235.7	S/MH (C0/180)	1.44	
NOMINAL POWER (W)	16	LOR (%)	100.0	S/MH (C90/270)	1.24	
RATED VOLTAGE (V)	120	TOTAL FLUX (lm)	1139.1	η UP, DN (C0-180)	10.2, 40.5	
NOMINAL FLUX (lm)	1139.08	CIE CLASS	SEMI-D.	η UP, DN (C180-360)	8.8, 40.5	
LAMPS INSIDE	1	η up (%)	19.0	CIBSE SHR NOM	1.50	
TEST VOLTAGE (V)	120	η down (%)	81.0	CIBSE SHR MAX	1.50	



C Range: 0 - 360DEG
 C Interval: 90.0DEG
 Test Speed: HIGH
 Temperature: 25.3 °C
 Operators: DAMIN
 Test Date: 24 April 2026

γ Range: 0 - 180DEG
 γ Interval: 1.0DEG
 Test System: EVERFINE GO-2000B_V1 SYSTEM V2.00.459
 Humidity: 65.0%
 Test Distance: 7.380m [K=1.0000]
 Remarks:

ZONAL FLUX DIAGRAM

ZONAL FLUX DIAGRAM:

γ	C0	C90	C180	C270				γ	Φ zone	Φ total	%lum, lamp
10	233.0	233.1	234.6	229.3				0- 10	22.32	22.32	1.96,1.96
20	228.3	221.9	231.5	215.8				10- 20	64.77	87.09	7.65,7.65
30	221.5	203.3	225.5	195.5				20- 30	100.8	187.9	16.5,16.5
40	212.1	177.2	215.3	169.0				30- 40	127.1	315.1	27.7,27.7
50	200.0	144.3	203.0	137.9				40- 50	141.3	456.3	40.1,40.1
60	185.9	105.6	188.2	102.5				50- 60	142.1	598.4	52.5,52.5
70	169.5	63.23	171.5	64.87				60- 70	130.4	728.8	64,64
80	151.5	23.49	152.5	28.43				70- 80	108.8	837.6	73.5,73.5
90	131.8	5.353	131.6	5.995				80- 90	84.85	922.4	81,81
100	98.59	6.262	89.89	3.918				90-100	67.70	990.1	86.9,86.9
110	74.93	7.998	60.27	4.573				100-110	37.44	1028	90.2,90.2
120	66.28	10.14	63.30	5.581				110-120	38.58	1066	93.6,93.6
130	52.60	12.12	49.27	4.886				120-130	29.68	1096	96.2,96.2
140	40.86	13.94	37.65	5.632				130-140	20.91	1117	98,98
150	15.32	15.41	13.74	4.559				140-150	12.59	1129	99.1,99.1
160	13.20	15.60	11.72	4.728				150-160	5.464	1135	99.6,99.6
170	13.16	13.30	12.31	5.869				160-170	3.221	1138	99.9,99.9
180	12.28	12.17	12.27	12.16				170-180	1.048	1139	100,100
DEG	LUMINOUS INTENSITY:cd								UNIT:lm		

Conical surface Flux(90deg): 384.73 lm

%lum = 33.8%

%lamp = 33.8%

Conical surface Flux(120deg): 598.41 lm

%lum = 52.5%

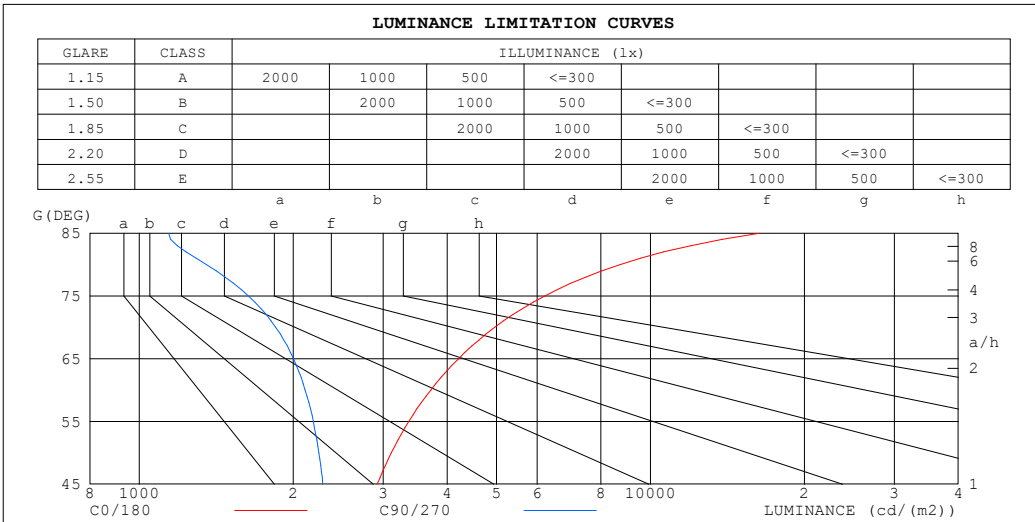
%lamp = 52.5%

C Range: 0 - 360DEG
 C Interval: 90.0DEG
 Test Speed: HIGH
 Temperature:25.3°C
 Operators:DAMIN
 Test Date:24 April 2026

γ Range: 0 - 180DEG
 γ Interval: 1.0DEG
 Test System:EVERFINE GO-2000B_V1 SYSTEM V2.00.459
 Humidity:65.0%
 Test Distance:7.380m [K=1.0000]
 Remarks:

LUMINANCE LIMITATION CURVES

Test:U:119.97V I:0.1448A P:16.370W PF:0.9421 Freq:59.98Hz Lamp Flux:1139.08x1 lm		
NAME: WS14-033B-BN 16W 40K	TYPE:	WEIGHT:
SPEC.:	DIM.:	SERIAL No.: 1
MFR.: EVERFINE	SUR.:	Shielding Angle:



LUMINANCE cd/(m2)		
G (DEG)	C0/180	C90/270
85	16329	1142
80	8724	1353
75	6211	1635
70	4955	1849
65	4213	2003
60	3717	2111
55	3367	2189
50	3111	2245
45	2919	2285

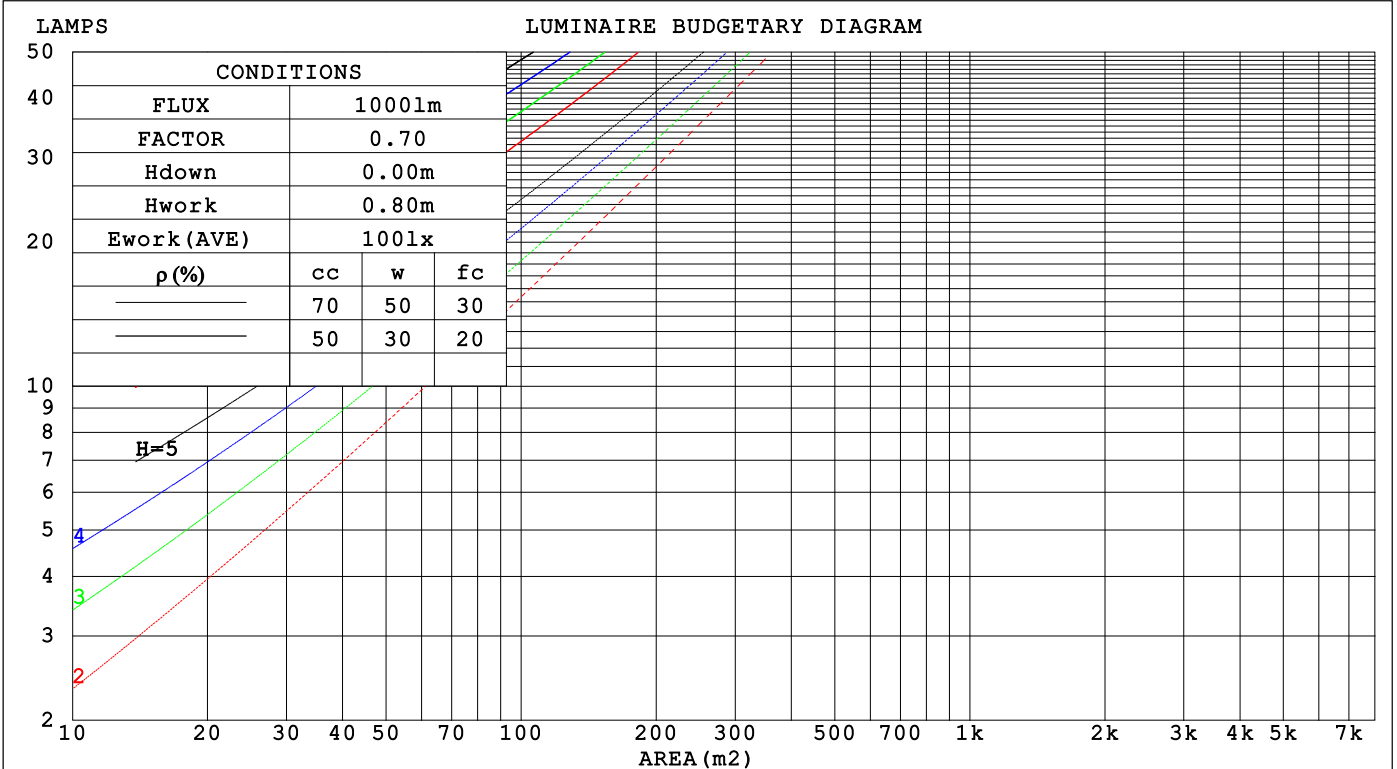
C Range: 0 - 360DEG
 C Interval: 90.0DEG
 Test Speed: HIGH
 Temperature: 25.3 °C
 Operators: DAMIN
 Test Date: 24 April 2026

γ Range: 0 - 180DEG
 γ Interval: 1.0DEG
 Test System: EVERFINE GO-2000B_V1 SYSTEM V2.00.459
 Humidity: 65.0%
 Test Distance: 7.380m [K=1.0000]
 Remarks:

CU AND LUMINAIRE BUDGETARY ESTIMATE DIAGRAM

Test:U:119.97V I:0.1448A P:16.370W PF:0.9421 Freq:59.98Hz Lamp Flux:1139.08x1 lm		
NAME: WS14-033B-BN 16W 40K	TYPE:	WEIGHT:
SPEC.:	DIM.:	SERIAL No.: 1
MFR.: EVERFINE	SUR.:	Shielding Angle:

ρcc	80%			70%			50%			30%			10%			0
ρw	50%	30%	10%	50%	30%	10%	50%	30%	10%	50%	30%	10%	50%	30%	10%	0
ρfc	20%			20%			20%			20%			20%			0
RCR	RCR:Room Cavity Ratio															
	Coefficients of Utilization(CU)															
0.0	1.15	1.15	1.15	1.10	1.10	1.10	1.01	1.01	1.01	.92	.92	.92	.85	.85	.85	.81
1.0	.95	.90	.85	.91	.86	.82	.83	.79	.76	.76	.73	.70	.69	.67	.65	.61
2.0	.81	.74	.67	.78	.71	.65	.71	.65	.60	.65	.60	.56	.59	.55	.52	.49
3.0	.71	.61	.54	.67	.59	.53	.62	.55	.49	.56	.51	.46	.51	.47	.43	.40
4.0	.62	.52	.45	.59	.51	.44	.54	.47	.41	.50	.43	.39	.45	.40	.36	.33
5.0	.55	.45	.38	.53	.44	.37	.48	.41	.35	.44	.38	.33	.40	.35	.31	.28
6.0	.49	.40	.33	.47	.38	.32	.43	.36	.30	.40	.33	.29	.37	.31	.27	.24
7.0	.44	.35	.29	.42	.34	.28	.39	.32	.26	.36	.30	.25	.33	.28	.24	.21
8.0	.40	.31	.25	.39	.30	.25	.36	.29	.23	.33	.27	.22	.30	.25	.21	.19
9.0	.37	.28	.23	.35	.27	.22	.33	.26	.21	.30	.24	.20	.28	.23	.19	.17
10.0	.34	.26	.20	.32	.25	.20	.30	.23	.19	.28	.22	.18	.26	.21	.17	.15



C Range: 0 - 360DEG
 C Interval: 90.0DEG
 Test Speed: HIGH
 Temperature:25.3 °C
 Operators:DAMIN
 Test Date:24 April 2026

γ Range: 0 - 180DEG
 γ Interval: 1.0DEG
 Test System:EVERFINE GO-2000B_V1 SYSTEM V2.00.459
 Humidity:65.0%
 Test Distance:7.380m [K=1.0000]
 Remarks:

WEC AND CCEC

Test:U:119.97V I:0.1448A P:16.370W PF:0.9421 Freq:59.98Hz		
Lamp Flux:1139.08x1 lm		
NAME: WS14-033B-BN 16W 40K	TYPE:	WEIGHT:
SPEC.:	DIM.:	SERIAL No.: 1
MFR.: EVERFINE	SUR.:	Shielding Angle:

ρ _{CC}	80%			70%			50%			30%			10%			0
ρ _w	50%	30%	10%	50%	30%	10%	50%	30%	10%	50%	30%	10%	50%	30%	10%	0
ρ _{fc}	20%			20%			20%			20%			20%			0
RCR	RCR:Room Cavity Ratio						Wall Exitance Coefficients(WEC)									
0.0																
1.0	.386	.220	.070	.373	.213	.068	.349	.200	.064	.326	.188	.060	.306	.177	.057	
2.0	.334	.183	.056	.323	.178	.055	.301	.167	.052	.280	.157	.049	.261	.148	.047	
3.0	.297	.158	.047	.286	.153	.046	.266	.144	.044	.248	.136	.042	.231	.128	.040	
4.0	.267	.139	.041	.258	.135	.040	.240	.127	.038	.223	.120	.036	.207	.112	.034	
5.0	.243	.124	.036	.234	.120	.035	.218	.113	.033	.202	.107	.032	.188	.100	.030	
6.0	.222	.112	.032	.215	.108	.031	.199	.102	.030	.185	.096	.028	.172	.091	.027	
7.0	.205	.101	.029	.198	.099	.028	.184	.093	.027	.171	.088	.026	.159	.083	.024	
8.0	.190	.093	.026	.184	.090	.026	.171	.085	.024	.159	.081	.023	.148	.076	.022	
9.0	.177	.086	.024	.171	.083	.023	.159	.079	.022	.148	.074	.021	.138	.070	.020	
10.0	.166	.080	.022	.160	.077	.022	.149	.073	.021	.139	.069	.020	.130	.065	.019	

ρ _{CC}	80%			70%			50%			30%			10%			0
ρ _w	50%	30%	10%	50%	30%	10%	50%	30%	10%	50%	30%	10%	50%	30%	10%	0
ρ _{fc}	20%			20%			20%			20%			20%			0
RCR	RCR:Room Cavity Ratio						Ceiling Cavity Exitance Coefficients(CCEC)									
0.0																
1.0	.335	.335	.335	.287	.287	.287	.196	.196	.196	.112	.112	.112	.036	.036	.036	
2.0	.332	.302	.274	.284	.259	.236	.194	.178	.163	.112	.103	.095	.036	.033	.031	
3.0	.325	.279	.240	.278	.240	.207	.191	.166	.145	.110	.097	.085	.035	.031	.028	
4.0	.318	.262	.218	.272	.226	.189	.187	.157	.133	.108	.092	.078	.035	.030	.026	
5.0	.310	.250	.204	.266	.216	.177	.183	.150	.125	.106	.088	.074	.034	.029	.024	
6.0	.302	.240	.194	.259	.208	.169	.179	.145	.119	.104	.085	.071	.033	.028	.023	
7.0	.295	.232	.187	.253	.201	.163	.175	.141	.115	.101	.083	.069	.033	.027	.023	
8.0	.288	.226	.182	.247	.196	.159	.171	.137	.113	.099	.081	.067	.032	.026	.022	
9.0	.281	.220	.178	.242	.191	.155	.167	.134	.110	.097	.079	.066	.031	.026	.022	
10.0	.275	.215	.175	.237	.187	.153	.164	.131	.109	.096	.078	.065	.031	.025	.021	
	.269	.211	.173	.232	.183	.151	.161	.129	.107	.094	.076	.064	.030	.025	.021	

C Range: 0 - 360DEG
 C Interval: 90.0DEG
 Test Speed: HIGH
 Temperature:25.3℃
 Operators:DAMIN
 Test Date:24 April 2026

γ Range: 0 - 180DEG
 γ Interval: 1.0DEG
 Test System:EVERFINE GO-2000B_V1 SYSTEM V2.00.459
 Humidity:65.0%
 Test Distance:7.380m [K=1.0000]
 Remarks:

UGR(Unified Glare Rating) Table

Test:U:119.97V I:0.1448A P:16.370W PF:0.9421 Freq:59.98Hz										
Lamp Flux:1139.08x1 lm										
NAME: WS14-033B-BN 16W 40K				TYPE:			WEIGHT:			
SPEC.:				DIM.:			SERIAL No.: 1			
MFR.: EVERFINE				SUR.:			Shielding Angle:			
ceiling/cavity	0.7	0.7	0.5	0.5	0.3	0.7	0.7	0.5	0.5	0.3
walls	0.5	0.3	0.5	0.3	0.3	0.5	0.3	0.5	0.3	0.3
working plane	0.2	0.2	0.2	0.2	0.2	0.2	0.2	0.2	0.2	0.2
Room dimensions	Viewed crosswise					Viewed endwise				
x = 2H y = 2H	15.8	17.2	16.3	17.7	18.3	13.8	15.2	14.3	15.7	16.3
3H	18.6	19.9	19.2	20.4	21.1	15.3	16.6	15.9	17.2	17.8
4H	20.2	21.4	20.8	22.0	22.6	15.9	17.1	16.5	17.7	18.3
6H	22.0	23.1	22.6	23.7	24.4	16.3	17.4	16.9	18.0	18.7
8H	23.0	24.1	23.6	24.7	25.4	16.4	17.5	17.0	18.1	18.8
12H	24.1	25.2	24.8	25.8	26.5	16.5	17.5	17.1	18.1	18.8
4H 2H	16.3	17.5	16.9	18.1	18.8	14.9	16.1	15.5	16.7	17.3
3H	19.3	20.4	19.9	21.0	21.7	16.7	17.7	17.3	18.3	19.0
4H	21.1	22.0	21.7	22.7	23.4	17.5	18.4	18.1	19.1	19.8
6H	23.1	23.9	23.7	24.6	25.3	18.1	18.9	18.7	19.6	20.3
8H	24.2	25.0	24.9	25.7	26.4	18.3	19.1	18.9	19.7	20.5
12H	25.5	26.3	26.2	26.9	27.7	18.4	19.1	19.1	19.8	20.6
8H 4H	21.4	22.2	22.0	22.8	23.6	18.4	19.2	19.1	19.9	20.7
6H	23.6	24.3	24.3	25.0	25.8	19.4	20.1	20.1	20.8	21.6
8H	24.9	25.5	25.6	26.2	27.1	19.8	20.4	20.5	21.1	22.0
12H	26.5	27.0	27.2	27.8	28.6	20.2	20.7	20.9	21.4	22.3
12H 4H	21.4	22.1	22.0	22.8	23.6	18.8	19.5	19.4	20.2	21.0
6H	23.7	24.3	24.4	25.0	25.8	19.9	20.5	20.7	21.3	22.1
8H	25.1	25.6	25.8	26.4	27.2	20.5	21.1	21.3	21.8	22.7
Variations with the observer position at spacings(CIE Pub.117):										
S = 1.0H	+ 0.1 / - 0.1					+ 0.1 / - 0.1				
1.5H	+ 0.2 / - 0.2					+ 0.2 / - 0.3				
2.0H	+ 0.2 / - 0.3					+ 0.3 / - 0.5				

CIE Pub.117, 1139 lm Total Lamp Luminous Flux Correct (8log(F/F0) = 0.5)
 Area: 0.1 m2

C Range: 0 - 360DEG	γ Range: 0 - 180DEG
C Interval: 90.0DEG	γ Interval: 1.0DEG
Test Speed: HIGH	Test System:EVERFINE GO-2000B_V1 SYSTEM V2.00.459
Temperature:25.3℃	Humidity:65.0%
Operators:DAMIN	Test Distance:7.380m [K=1.0000]
Test Date:24 April 2026	Remarks:

UTILIZATION FACTORS TABLE

Test:U:119.97V I:0.1448A P:16.370W PF:0.9421 Freq:59.98Hz Lamp Flux:1139.08x1 lm		
NAME: WS14-033B-BN 16W 40K	TYPE:	WEIGHT:
SPEC.:	DIM.:	SERIAL No.: 1
MFR.: EVERFINE	SUR.:	Shielding Angle:

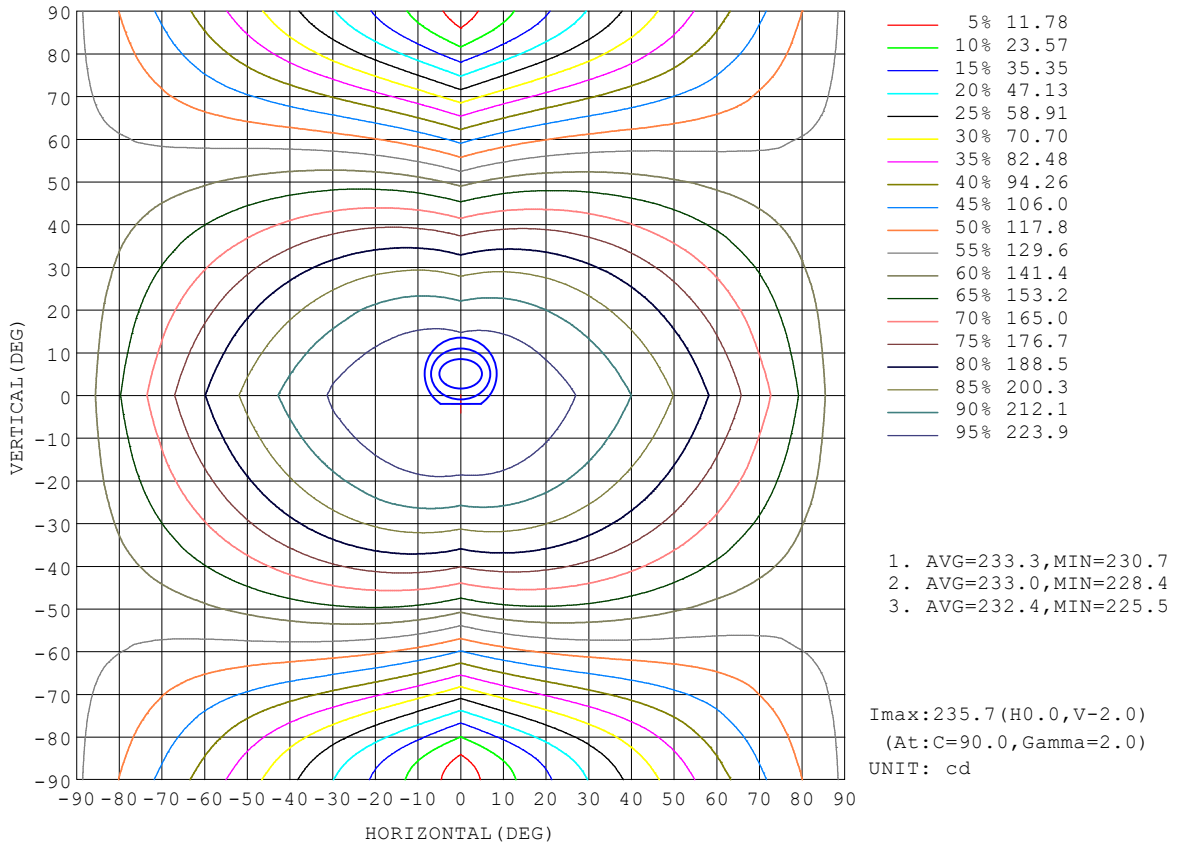
REFLECTANCE										
Ceiling	0.8	0.8	0.8	0.7	0.7	0.7	0.5	0.5	0.5	0
Walls	0.7	0.5	0.3	0.7	0.5	0.3	0.7	0.5	0.3	0
Working plane	0.2	0.2	0.2	0.2	0.2	0.2	0.2	0.2	0.2	0
ROOM INDEX	UTILIZATION FACTORS (PERCENT) $k(RI) \times RCR = 5$									
$k = 0.60$	47	35	27	46	34	27	44	33	27	20
0.80	56	43	35	55	43	35	52	41	34	26
1.00	64	51	43	62	50	42	58	50	41	32
1.25	71	58	50	69	57	49	64	54	47	37
1.50	76	64	55	73	62	54	68	59	52	41
2.00	83	72	64	80	70	63	74	66	60	48
2.50	88	78	70	85	75	68	78	71	64	51
3.00	92	82	75	88	80	73	81	74	69	55
4.00	97	89	82	93	85	79	85	79	74	60
5.00	100	93	87	95	89	84	88	83	78	63
ROOM INDEX	UF(total)									Direct
According to DIN EN 13032-2 2004			Suspended				SHRNOM = 1.25			

C Range: 0 - 360DEG
 C Interval: 90.0DEG
 Test Speed: HIGH
 Temperature:25.3°C
 Operators:DAMIN
 Test Date:24 April 2026

γ Range: 0 - 180DEG
 γ Interval: 1.0DEG
 Test System:EVERFINE GO-2000B_V1 SYSTEM V2.00.459
 Humidity:65.0%
 Test Distance:7.380m [K=1.0000]
 Remarks:

ISOCANDELA DIAGRAM

Test:U:119.97V I:0.1448A P:16.370W PF:0.9421 Freq:59.98Hz Lamp Flux:1139.08x1 lm		
NAME: WS14-033B-BN 16W 40K	TYPE:	WEIGHT:
SPEC.:	DIM.:	SERIAL No.: 1
MFR.: EVERFINE	SUR.:	Shielding Angle:

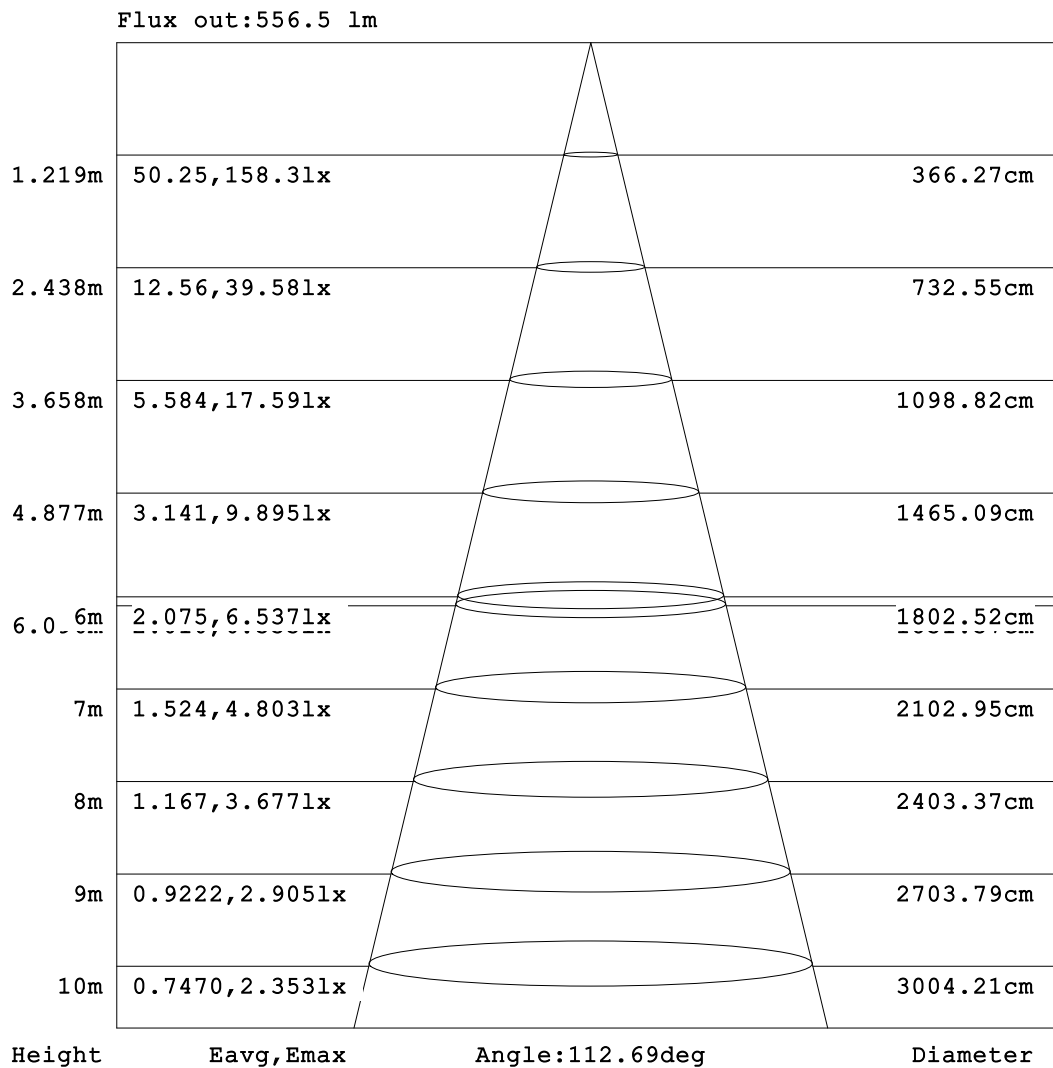


C Range: 0 - 360DEG
C Interval: 90.0DEG
Test Speed: HIGH
Temperature: 25.3 °C
Operators: DAMIN
Test Date: 24 April 2026

γ Range: 0 - 180DEG
γ Interval: 1.0DEG
Test System: EVERFINE GO-2000B_V1 SYSTEM V2.00.459
Humidity: 65.0%
Test Distance: 7.380m [K=1.0000]
Remarks:

AAI Figure

Test:U:119.97V I:0.1448A P:16.370W PF:0.9421 Freq:59.98Hz Lamp Flux:1139.08x1 lm		
NAME: WS14-033B-BN 16W 40K	TYPE:	WEIGHT:
SPEC.:	DIM.:	SERIAL No.: 1
MFR.: EVERFINE	SUR.:	Shielding Angle:



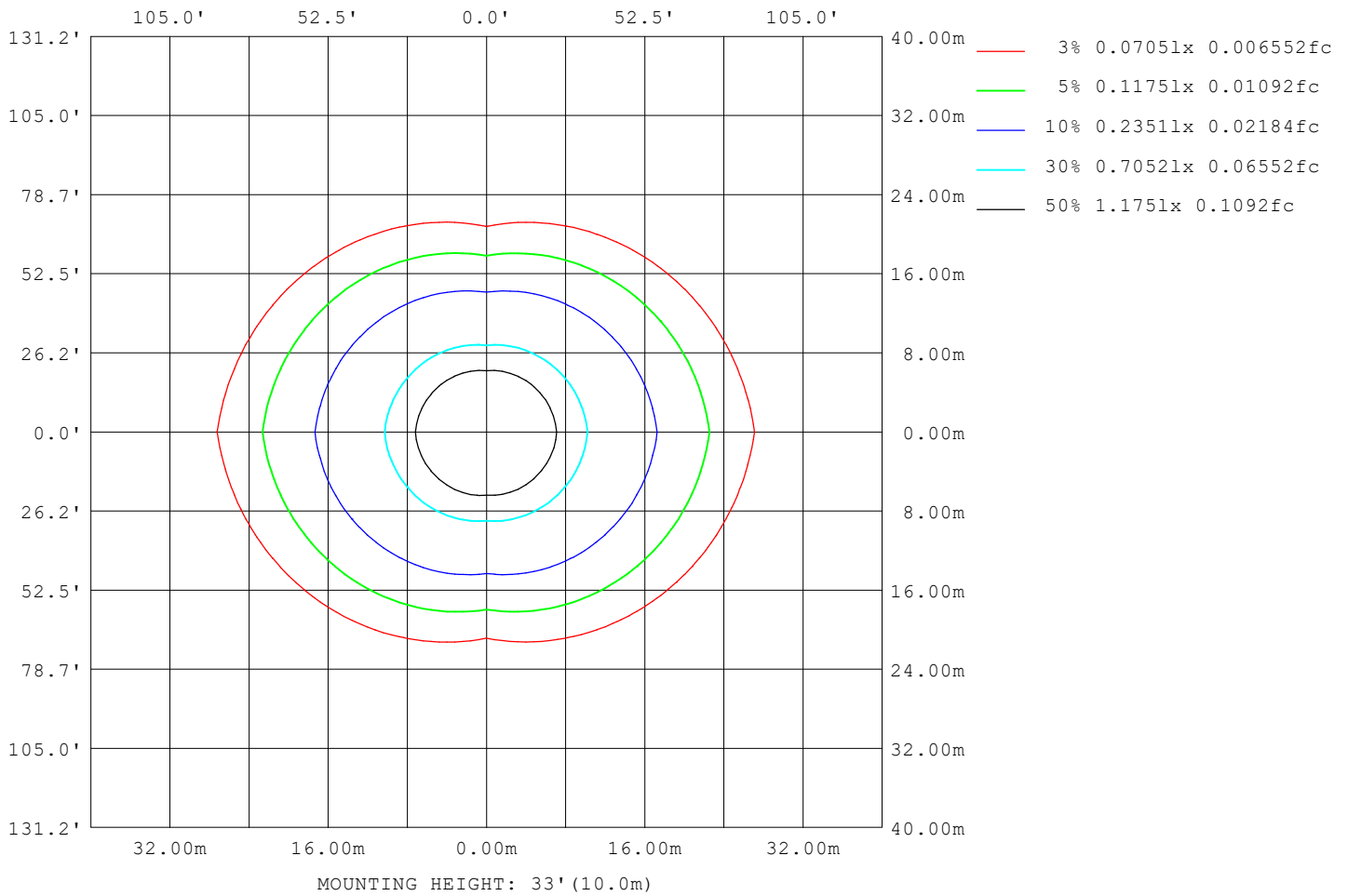
Note:The Curves indicate the illuminated area and the average illumination when the luminaire is at different distance.

C Range: 0 - 360DEG
C Interval: 90.0DEG
Test Speed: HIGH
Temperature:25.3°C
Operators:DAMIN
Test Date:24 April 2026

γ Range: 0 - 180DEG
γ Interval: 1.0DEG
Test System:EVERFINE GO-2000B_V1 SYSTEM V2.00.459
Humidity:65.0%
Test Distance:7.380m [K=1.0000]
Remarks:

ISOLUX DIAGRAM

Test:U:119.97V I:0.1448A P:16.370W PF:0.9421 Freq:59.98Hz Lamp Flux:1139.08x1 lm		
NAME: WS14-033B-BN 16W 40K	TYPE:	WEIGHT:
SPEC.:	DIM.:	SERIAL No.: 1
MFR.: EVERFINE	SUR.:	Shielding Angle:



C Range: 0 - 360DEG
 C Interval: 90.0DEG
 Test Speed: HIGH
 Temperature:25.3 °C
 Operators:DAMIN
 Test Date:24 April 2026

γ Range: 0 - 180DEG
 γ Interval: 1.0DEG
 Test System:EVERFINE GO-2000B_V1 SYSTEM V2.00.459
 Humidity:65.0%
 Test Distance:7.380m [K=1.0000]
 Remarks:

LED Avg.L Report

Test:U:119.97V I:0.1448A P:16.370W PF:0.9421 Freq:59.98Hz Lamp Flux:1139.08x1 lm		
NAME: WS14-033B-BN 16W 40K	TYPE:	WEIGHT:
SPEC.:	DIM.:	SERIAL No.: 1
MFR.: EVERFINE	SUR.:	Shielding Angle:

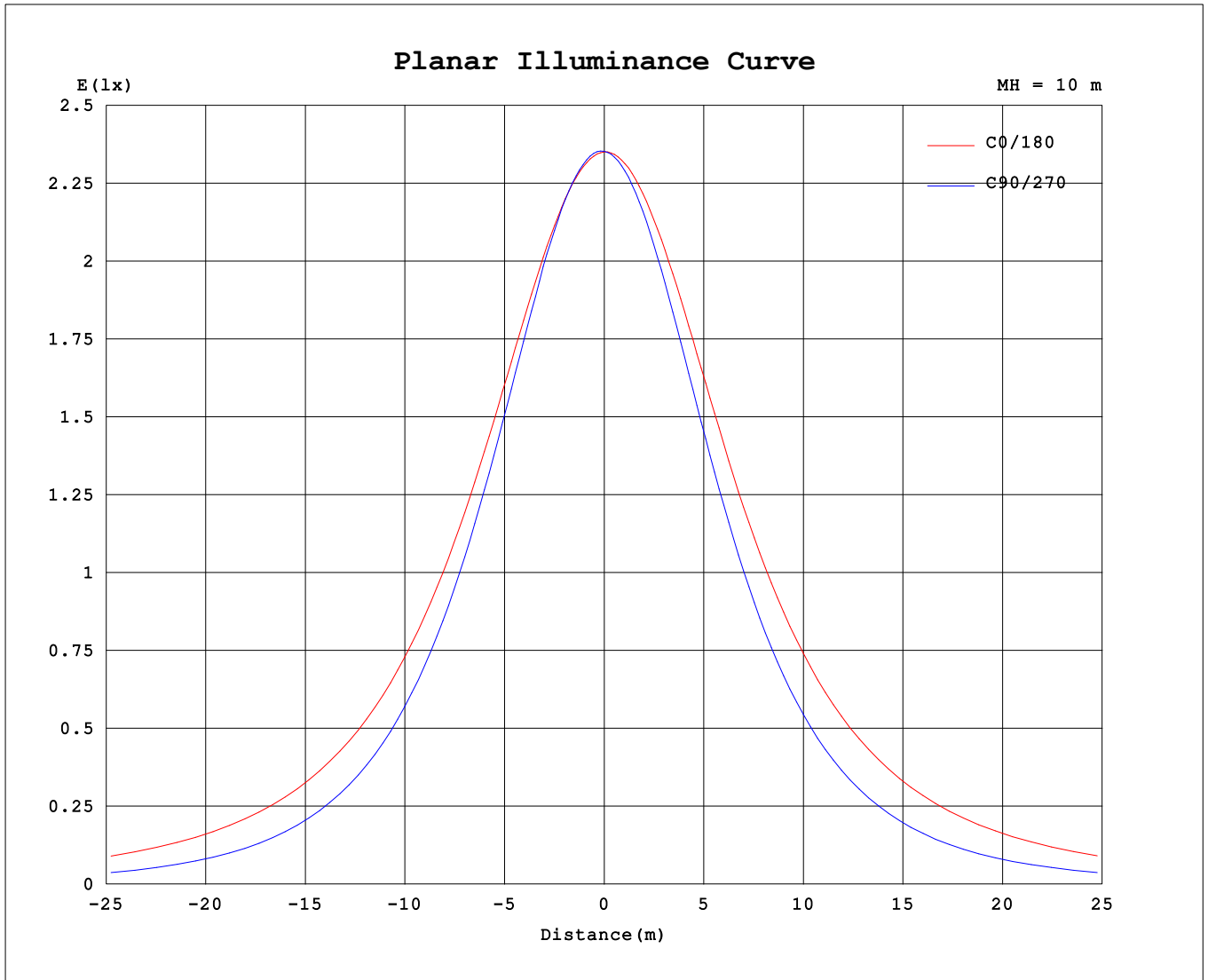
AvgL	cd/m2
L_0~180 (65) av	4237
L_0~180 (75) av	6238
L_0~180 (85) av	16346
L_90~270 (65) av	1993
L_90~270 (75) av	1709
L_90~270 (85) av	1377
L_45 (65) av	2836
L_45 (75) av	3409
L_45 (85) av	6991

Standard: GB/T 29293-2012

C Range: 0 - 360DEG
 C Interval: 90.0DEG
 Test Speed: HIGH
 Temperature:25.3℃
 Operators:DAMIN
 Test Date:24 April 2026

γ Range: 0 - 180DEG
 γ Interval: 1.0DEG
 Test System:EVERFINE GO-2000B_V1 SYSTEM V2.00.459
 Humidity:65.0%
 Test Distance:7.380m [K=1.0000]
 Remarks:

Planar Illuminance Curve



C Range: 0 - 360DEG
 C Interval: 90.0DEG
 Test Speed: HIGH
 Temperature: 25.3 °C
 Operators: DAMIN
 Test Date: 24 April 2026

γ Range: 0 - 180DEG
 γ Interval: 1.0DEG
 Test System: EVERFINE GO-2000B_V1 SYSTEM V2.00.459
 Humidity: 65.0%
 Test Distance: 7.380m [K=1.0000]
 Remarks:

LUMINOUS DISTRIBUTION INTENSITY DATA

Test:U:119.97V I:0.1448A P:16.370W PF:0.9421 Freq:59.98Hz Lamp Flux:1139.08x1 lm		
NAME: WS14-033B-BN 16W 40K	TYPE:	WEIGHT:
SPEC.:	DIM.:	SERIAL No.: 1
MFR.: EVERFINE	SUR.:	Shielding Angle:

Table--1

UNIT: cd

C (DEG) \ γ (DEG)	0	90	180	270															
0	235	235	235	235															
5	234	235	235	233															
10	233	233	235	229															
15	231	229	233	223															
20	228	222	231	216															
25	225	214	229	206															
30	221	203	226	195															
35	217	191	220	183															
40	212	177	215	169															
45	206	162	209	154															
50	200	144	203	138															
55	193	126	196	120															
60	186	106	188	103															
65	178	84.6	180	83.8															
70	169	63.2	172	64.9															
75	161	42.3	162	46.2															
80	151	23.5	152	28.4															
85	142	9.95	143	14.0															
90	132	5.35	132	6.00															
95	122	5.65	122	4.06															
100	98.6	6.26	89.9	3.92															
105	64.4	7.19	45.5	4.06															
110	74.9	8.00	60.3	4.57															
115	73.5	9.06	70.8	5.03															
120	66.3	10.1	63.3	5.58															
125	59.4	11.1	56.2	5.80															
130	52.6	12.1	49.3	4.89															
135	46.5	13.1	43.2	4.43															
140	40.9	13.9	37.7	5.63															
145	33.1	14.7	30.3	5.57															
150	15.3	15.4	13.7	4.56															
155	14.3	16.0	12.2	4.63															
160	13.2	15.6	11.7	4.73															
165	14.9	14.2	12.9	4.86															
170	13.2	13.3	12.3	5.87															
175	11.1	13.8	10.5	8.94															
180	12.3	12.2	12.3	12.2															

C Range: 0 - 360DEG
 C Interval: 90.0DEG
 Test Speed: HIGH
 Temperature:25.3℃
 Operators:DAMIN
 Test Date:24 April 2026

γ Range: 0 - 180DEG
 γ Interval: 1.0DEG
 Test System:EVERFINE GO-2000B_V1 SYSTEM V2.00.459
 Humidity:65.0%
 Test Distance:7.380m [K=1.0000]
 Remarks: