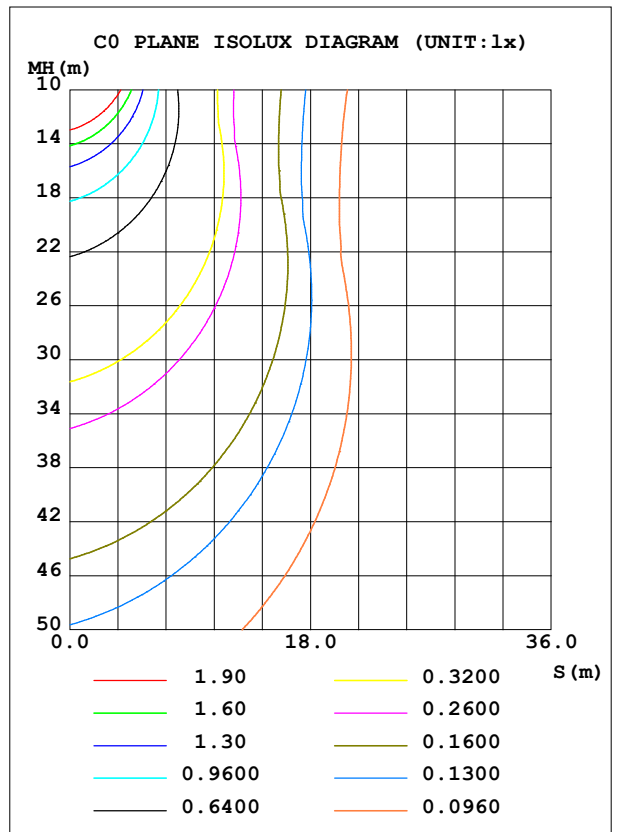
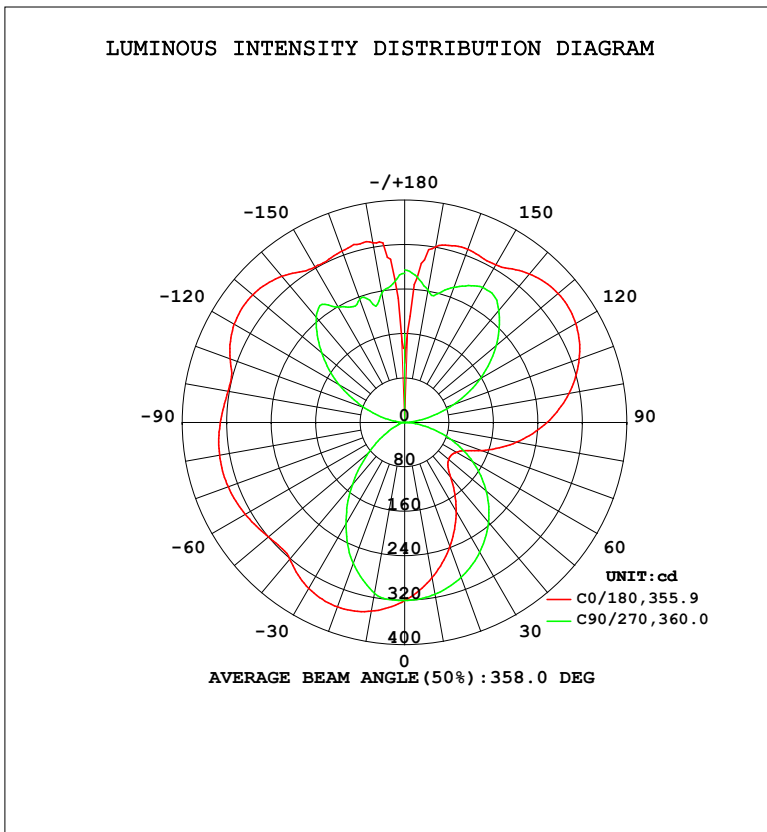


LUMINAIRE PHOTOMETRIC TEST REPORT

Test:U:119.9V I:0.3108A P:36.84W PF:0.9884 Freq:60.01Hz Lamp Flux:2813.19x1 lm		
NAME: PT07-44-40S-952C5-MVTD-BK 5000K	TYPE:	WEIGHT:
SPEC.:	DIM.:	SERIAL No.:
MFR.: FOSHAN LEDKEY LIGHTING CO.,LTD.	SUR.:	Shielding Angle:

DATA OF LAMP		PHOTOMETRIC DATA				Eff: 76.35 lm/W
MODEL		Imax (cd)	361.3	S/MH (C0/180)		1.56
NOMINAL POWER (W)		LOR (%)	100.0	S/MH (C90/270)		1.03
RATED VOLTAGE (V)	120	TOTAL FLUX (lm)	2813.2	η UP, DN (C0-180)		28.6, 21.1
NOMINAL FLUX (lm)	2813.19	CIE CLASS	DIFFUSE	η UP, DN (C180-360)		27.6, 22.7
LAMPS INSIDE	1	η up (%)	56.2	CIBSE SHR NOM		1.25
TEST VOLTAGE (V)	120	η down (%)	43.8	CIBSE SHR MAX		1.35



C Range: 0 - 360DEG
 C Interval: 22.5DEG
 Test Speed: HIGH
 Temperature: 25.2°C
 Operators: Dano
 Test Date: 2023-06-13

γ Range: 0 - 180DEG
 γ Interval: 1.0DEG
 Test System: EVERFINE GO-R5000_V2 SYSTEM V2.00.459
 Humidity: 55.3%
 Test Distance: 2.900m [K=0.8810]
 Remarks:

ZONAL FLUX DIAGRAM

ZONAL FLUX DIAGRAM:

γ	C0	C45	C90	C135	C180	C225	C270	C315	γ	Φ zone	Φ total	%lum,lamp
10	283.9	292.2	314.0	334.6	344.7	337.7	312.3	294.4	0- 10	30.31	30.31	1.08,1.08
20	238.1	255.2	296.8	335.4	353.3	342.0	270.6	259.4	10- 20	86.38	116.7	4.15,4.15
30	185.7	210.7	270.2	322.6	345.0	332.4	210.8	215.2	20- 30	129.7	246.4	8.76,8.76
40	129.4	160.6	234.8	297.1	321.7	308.4	146.6	164.5	30- 40	154.3	400.8	14.2,14.2
50	103.7	107.0	191.6	260.7	320.4	272.5	85.31	108.6	40- 50	159.5	560.3	19.9,19.9
60	107.8	77.39	141.6	245.7	331.1	253.4	36.44	78.25	50- 60	158.3	718.6	25.5,25.5
70	148.1	82.68	87.35	241.1	338.0	245.5	12.30	79.17	60- 70	158.2	876.8	31.2,31.2
80	204.8	131.2	33.66	235.4	338.3	235.7	7.677	124.2	70- 80	168.7	1045	37.2,37.2
90	256.5	183.8	1.020	227.1	331.7	223.2	0.6699	171.5	80- 90	186.6	1232	43.8,43.8
100	300.1	229.7	32.24	225.6	322.9	219.2	26.17	213.2	90-100	206.0	1438	51.1,51.1
110	334.4	265.6	92.32	254.9	334.3	249.5	76.66	247.1	100-110	230.2	1668	59.3,59.3
120	355.6	289.3	157.0	276.2	354.2	271.2	136.3	270.6	110-120	247.4	1916	68.1,68.1
130	360.8	298.7	215.2	284.0	357.2	279.8	195.0	282.2	120-130	244.4	2160	76.8,76.8
140	349.0	298.0	263.4	285.3	343.6	284.3	247.8	275.9	130-140	223.7	2384	84.7,84.7
150	327.9	301.7	281.0	305.3	323.0	304.4	240.2	285.7	140-150	186.3	2570	91.4,91.4
160	331.6	298.3	258.6	326.0	328.3	324.5	236.2	234.9	150-160	137.4	2707	96.2,96.2
170	320.7	245.4	242.3	305.8	328.0	318.3	237.2	213.6	160-170	80.54	2788	99.1,99.1
180	106.9	251.8	274.7	243.7	133.1	227.3	268.7	268.0	170-180	25.17	2813	100,100
DEG	LUMINOUS INTENSITY:cd									UNIT:lm		

Conical surface Flux(90deg): 480.53 lm

%lum = 17.1%

%lamp = 17.1%

Conical surface Flux(120deg): 718.58 lm

%lum = 25.5%

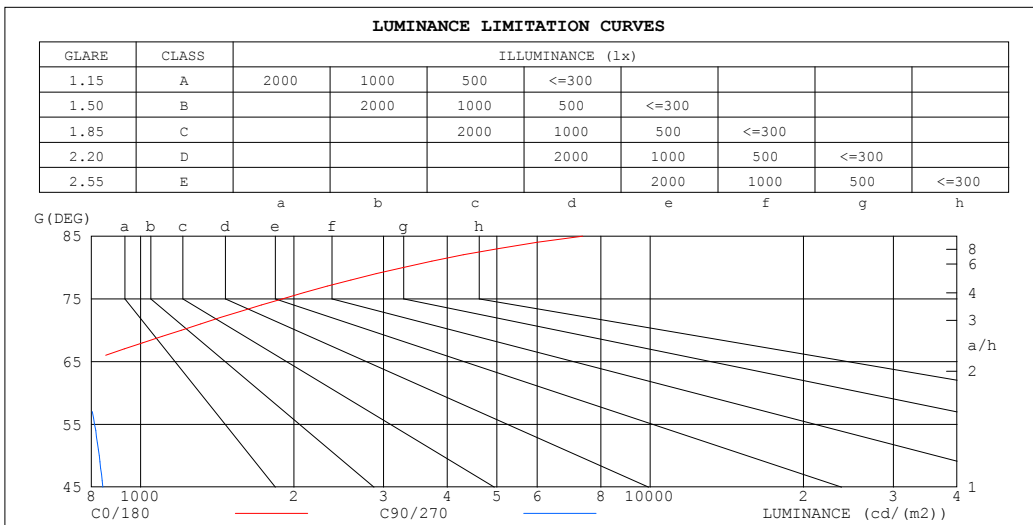
%lamp = 25.5%

C Range: 0 - 360DEG
 C Interval: 22.5DEG
 Test Speed: HIGH
 Temperature:25.2℃
 Operators:Dano
 Test Date:2023-06-13

γ Range: 0 - 180DEG
 γ Interval: 1.0DEG
 Test System:EVERFINE GO-R5000_V2 SYSTEM V2.00.459
 Humidity:55.3%
 Test Distance:2.900m [K=0.8810]
 Remarks:

LUMINANCE LIMITATION CURVES

Test:U:119.9V I:0.3108A P:36.84W PF:0.9884 Freq:60.01Hz Lamp Flux:2813.19x1 lm		
NAME: PT07-44-40S-952C5-MVTD-BK 5000K	TYPE:	WEIGHT:
SPEC.:	DIM.:	SERIAL No.:
MFR.: FOSHAN LEDKEY LIGHTING CO.,LTD.	SUR.:	Shielding Angle:



LUMINANCE cd/(m2)		
G (DEG)	C0/180	C90/270
85	7369	382
80	3274	539
75	1898	640
70	1202	711
65	790	756
60	599	788
55	498	812
50	448	829
45	434	843

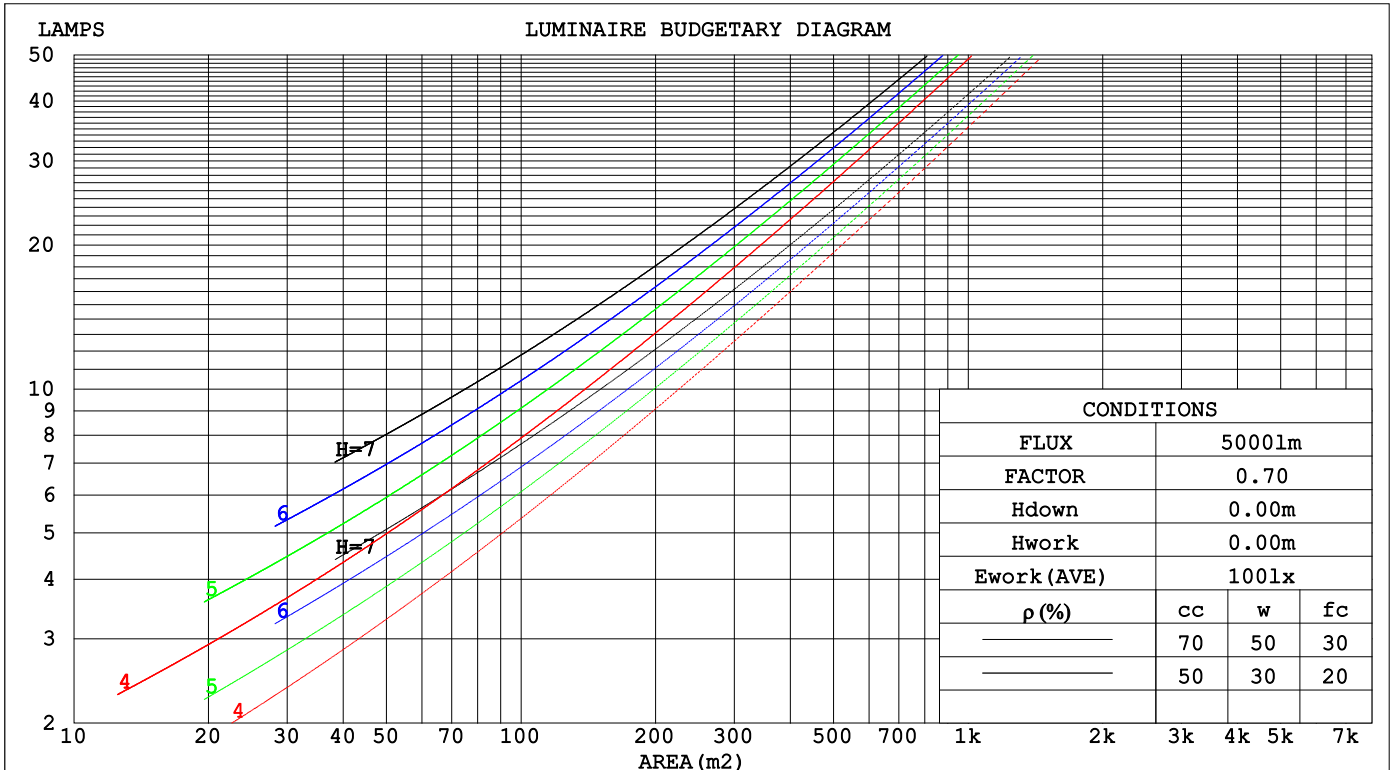
C Range: 0 - 360DEG
 C Interval: 22.5DEG
 Test Speed: HIGH
 Temperature:25.2℃
 Operators:Dano
 Test Date:2023-06-13

γ Range: 0 - 180DEG
 γ Interval: 1.0DEG
 Test System:EVERFINE GO-R5000_V2 SYSTEM V2.00.459
 Humidity:55.3%
 Test Distance:2.900m [K=0.8810]
 Remarks:

CU AND LUMINAIRE BUDGETARY ESTIMATE DIAGRAM

Test:U:119.9V I:0.3108A P:36.84W PF:0.9884 Freq:60.01Hz Lamp Flux:2813.19x1 lm		
NAME: PT07-44-40S-952C5-MVTD-BK 5000K	TYPE:	WEIGHT:
SPEC.:	DIM.:	SERIAL No.:
MFR.: FOSHAN LEDKEY LIGHTING CO.,LTD.	SUR.:	Shielding Angle:

ρ_{cc}	80%			70%			50%			30%			10%			0
ρ_w	50%	30%	10%	50%	30%	10%	50%	30%	10%	50%	30%	10%	50%	30%	10%	0
ρ_{fc}	20%			20%			20%			20%			20%			0
RCR	RCR:Room Cavity Ratio						Coefficients of Utilization(CU)									
0.0	1.06	1.06	1.06	.97	.97	.97	.80	.80	.80	.65	.65	.65	.50	.50	.50	.44
1.0	.88	.83	.79	.80	.76	.72	.66	.62	.60	.52	.50	.48	.40	.38	.37	.31
2.0	.76	.68	.62	.69	.63	.57	.56	.52	.48	.45	.41	.38	.34	.32	.29	.24
3.0	.66	.58	.51	.60	.53	.47	.49	.44	.39	.39	.35	.32	.30	.27	.24	.20
4.0	.58	.49	.43	.53	.45	.39	.43	.37	.33	.34	.30	.27	.26	.23	.20	.16
5.0	.51	.43	.36	.47	.39	.34	.39	.33	.28	.31	.26	.23	.23	.20	.18	.14
6.0	.46	.37	.31	.42	.34	.29	.35	.29	.24	.28	.23	.20	.21	.18	.15	.12
7.0	.41	.33	.27	.38	.30	.25	.31	.25	.21	.25	.21	.17	.19	.16	.14	.11
8.0	.37	.29	.24	.34	.27	.22	.28	.23	.19	.23	.19	.15	.18	.14	.12	.10
9.0	.34	.26	.21	.31	.24	.20	.26	.21	.17	.21	.17	.14	.16	.13	.11	.09
10.0	.31	.24	.19	.29	.22	.18	.24	.19	.15	.19	.15	.12	.15	.12	.10	.08



C Range: 0 - 360DEG
 C Interval: 22.5DEG
 Test Speed: HIGH
 Temperature:25.2°C
 Operators:Dano
 Test Date:2023-06-13

γ Range: 0 - 180DEG
 γ Interval: 1.0DEG
 Test System:EVERFINE GO-R5000_V2 SYSTEM V2.00.459
 Humidity:55.3%
 Test Distance:2.900m [K=0.8810]
 Remarks:

WEC AND CCEC

Test:U:119.9V I:0.3108A P:36.84W PF:0.9884 Freq:60.01Hz Lamp Flux:2813.19x1 lm		
NAME: PT07-44-40S-952C5-MVTD-BK 5000K	TYPE:	WEIGHT:
SPEC.:	DIM.:	SERIAL No.:
MFR.: FOSHAN LEDKEY LIGHTING CO.,LTD.	SUR.:	Shielding Angle:

ρ _{cc}	80%			70%			50%			30%			10%			0
ρ _w	50%	30%	10%	50%	30%	10%	50%	30%	10%	50%	30%	10%	50%	30%	10%	0
ρ _{fc}	20%			20%			20%			20%			20%			0
RCR	RCR:Room Cavity Ratio						Wall Exitance Coefficients(WEC)									
0.0																
1.0	.355	.202	.064	.331	.189	.060	.286	.164	.052	.244	.141	.045	.206	.119	.038	
2.0	.304	.166	.051	.282	.155	.048	.240	.134	.042	.202	.113	.036	.167	.094	.030	
3.0	.269	.143	.043	.249	.133	.040	.211	.115	.035	.176	.097	.030	.144	.080	.025	
4.0	.243	.126	.037	.224	.117	.035	.190	.100	.030	.157	.084	.025	.127	.069	.021	
5.0	.221	.113	.033	.204	.105	.031	.172	.090	.026	.142	.075	.022	.114	.061	.018	
6.0	.203	.102	.029	.188	.095	.027	.158	.081	.024	.130	.068	.020	.104	.055	.016	
7.0	.188	.093	.026	.173	.086	.025	.146	.074	.021	.120	.062	.018	.096	.050	.015	
8.0	.175	.085	.024	.161	.079	.022	.136	.068	.019	.112	.057	.016	.089	.046	.013	
9.0	.163	.079	.022	.150	.073	.021	.127	.063	.018	.104	.052	.015	.083	.042	.012	
10.0	.153	.073	.020	.141	.068	.019	.119	.058	.016	.098	.049	.014	.078	.039	.011	

ρ _{cc}	80%			70%			50%			30%			10%			0
ρ _w	50%	30%	10%	50%	30%	10%	50%	30%	10%	50%	30%	10%	50%	30%	10%	0
ρ _{fc}	20%			20%			20%			20%			20%			0
RCR	RCR:Room Cavity Ratio						Ceiling Cavity Exitance Coefficients(CCEC)									
0.0	.619	.619	.619	.529	.529	.529	.361	.361	.361	.207	.207	.207	.066	.066	.066	
1.0	.615	.588	.563	.526	.504	.484	.360	.347	.335	.207	.201	.195	.066	.065	.063	
2.0	.608	.567	.531	.521	.488	.459	.357	.337	.320	.206	.196	.188	.066	.063	.061	
3.0	.601	.551	.511	.516	.476	.443	.354	.330	.311	.204	.193	.183	.066	.063	.060	
4.0	.594	.540	.498	.510	.466	.433	.351	.325	.305	.203	.190	.180	.065	.062	.059	
5.0	.587	.531	.489	.504	.459	.425	.347	.321	.300	.201	.188	.178	.065	.061	.059	
6.0	.580	.523	.482	.499	.453	.420	.344	.317	.297	.200	.187	.177	.064	.061	.058	
7.0	.574	.517	.478	.494	.448	.416	.341	.314	.295	.198	.185	.176	.064	.061	.058	
8.0	.568	.512	.474	.489	.444	.413	.338	.312	.293	.197	.184	.175	.064	.060	.058	
9.0	.562	.508	.471	.485	.441	.411	.336	.310	.292	.196	.183	.174	.063	.060	.058	
10.0	.557	.504	.469	.480	.438	.409	.333	.308	.291	.194	.182	.173	.063	.060	.057	

C Range: 0 - 360DEG
 C Interval: 22.5DEG
 Test Speed: HIGH
 Temperature:25.2℃
 Operators:Dano
 Test Date:2023-06-13

γ Range: 0 - 180DEG
 γ Interval: 1.0DEG
 Test System:EVERFINE GO-R5000_V2 SYSTEM V2.00.459
 Humidity:55.3%
 Test Distance:2.900m [K=0.8810]
 Remarks:

UGR(Unified Glare Rating) Table

Test:U:119.9V I:0.3108A P:36.84W PF:0.9884 Freq:60.01Hz										
Lamp Flux:2813.19x1 lm										
NAME: PT07-44-40S-952C5-MVTD-BK 5000K					TYPE:			WEIGHT:		
SPEC.:					DIM.:			SERIAL No.:		
MFR.: FOSHAN LEDKEY LIGHTING CO.,LTD.					SUR.:			Shielding Angle:		
ceiling/cavity	0.7	0.7	0.5	0.5	0.3	0.7	0.7	0.5	0.5	0.3
walls	0.5	0.3	0.5	0.3	0.3	0.5	0.3	0.5	0.3	0.3
working plane	0.2	0.2	0.2	0.2	0.2	0.2	0.2	0.2	0.2	0.2
Room dimensions	Viewed crosswise					Viewed endwise				
x = 2H y = 2H	0.8	2.6	2.7	4.6	7.1	5.2	7.0	7.1	9.0	11.6
3H	5.6	7.3	7.6	9.3	11.9	6.6	8.2	8.5	10.2	12.8
4H	8.4	10.0	10.4	12.0	14.7	7.0	8.6	9.0	10.6	13.3
6H	11.4	12.9	13.4	14.9	17.6	7.3	8.8	9.3	10.8	13.5
8H	13.0	14.4	15.0	16.4	19.1	7.4	8.8	9.4	10.8	13.5
12H	14.7	16.1	16.7	18.1	20.8	7.3	8.7	9.4	10.7	13.5
4H 2H	0.8	2.4	2.8	4.4	7.0	6.4	8.0	8.4	10.0	12.6
3H	6.0	7.4	8.0	9.4	12.1	8.2	9.5	10.2	11.6	14.3
4H	9.2	10.4	11.2	12.5	15.2	8.9	10.1	10.9	12.2	14.9
6H	12.4	13.5	14.5	15.6	18.4	9.4	10.6	11.5	12.6	15.4
8H	14.1	15.1	16.2	17.2	20.0	9.6	10.6	11.7	12.7	15.5
12H	16.0	16.9	18.1	19.0	21.8	9.7	10.6	11.8	12.7	15.5
8H 4H	9.4	10.4	11.4	12.5	15.3	10.7	11.7	12.7	13.8	16.6
6H	13.0	13.9	15.1	16.0	18.8	11.7	12.6	13.9	14.8	17.6
8H	15.0	15.8	17.1	17.9	20.8	12.2	13.0	14.3	15.1	18.0
12H	17.1	17.8	19.3	20.0	22.9	12.5	13.2	14.6	15.4	18.3
12H 4H	9.3	10.2	11.4	12.4	15.2	11.3	12.2	13.4	14.3	17.2
6H	13.1	13.9	15.2	16.0	18.9	12.7	13.5	14.8	15.7	18.5
8H	15.2	15.9	17.3	18.0	20.9	13.4	14.1	15.6	16.3	19.2
CIE190: 2010										

CIE190: 2010
Area: 0.36 m2

C Range: 0 - 360DEG
C Interval: 22.5DEG
Test Speed: HIGH
Temperature:25.2℃
Operators:Dano
Test Date:2023-06-13

γ Range: 0 - 180DEG
γ Interval: 1.0DEG
Test System:EVERFINE GO-R5000_V2 SYSTEM V2.00.459
Humidity:55.3%
Test Distance:2.900m [K=0.8810]
Remarks:

UTILIZATION FACTORS TABLE

Test:U:119.9V I:0.3108A P:36.84W PF:0.9884 Freq:60.01Hz Lamp Flux:2813.19x1 lm		
NAME: PT07-44-40S-952C5-MVTD-BK 5000K	TYPE:	WEIGHT:
SPEC.:	DIM.:	SERIAL No.:
MFR.: FOSHAN LEDKEY LIGHTING CO.,LTD.	SUR.:	Shielding Angle:

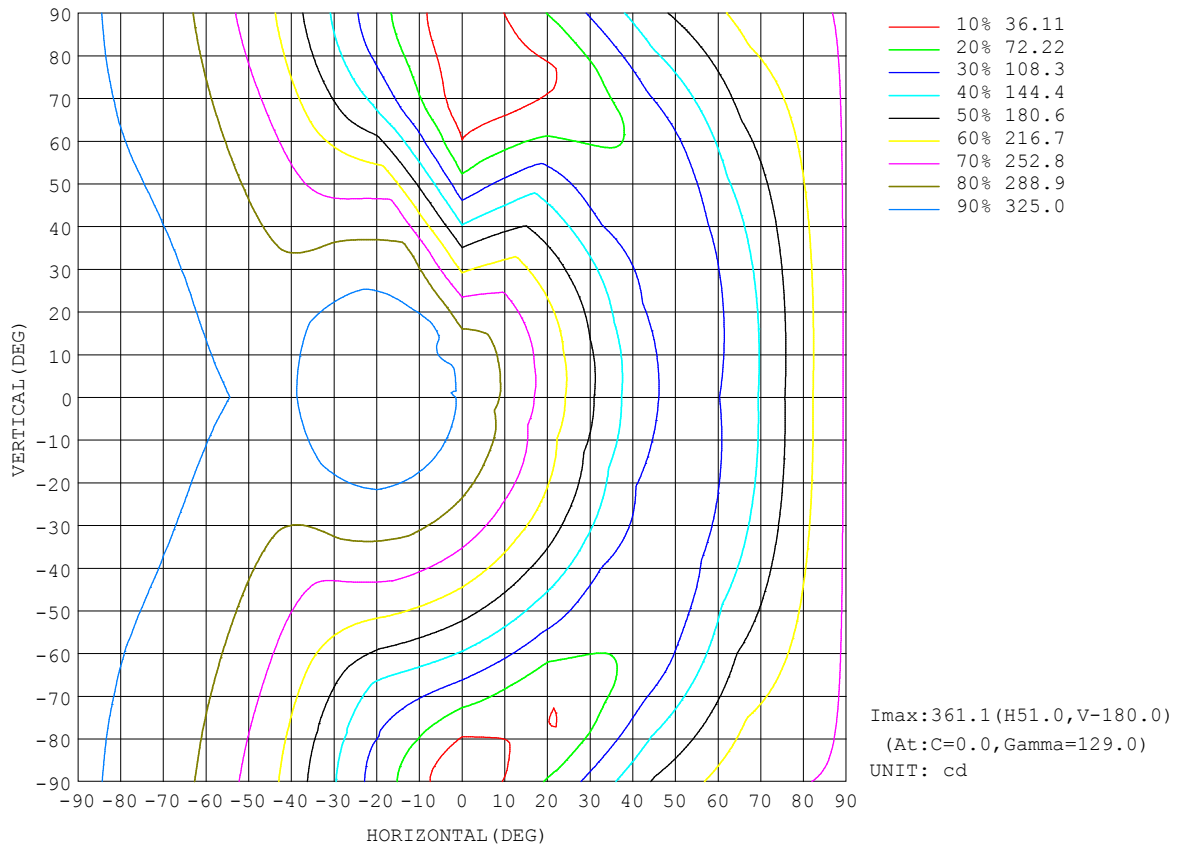
REFLECTANCE										
Ceiling	0.8	0.8	0.8	0.7	0.7	0.7	0.5	0.5	0.5	0
Walls	0.7	0.5	0.3	0.7	0.5	0.3	0.7	0.5	0.3	0
Working plane	0.2	0.2	0.2	0.2	0.2	0.2	0.2	0.2	0.2	0
ROOM INDEX	UTILIZATION FACTORS (PERCENT) $k(RI) \times RCR = 5$									
k = 0.60	39	27	20	36	26	19	32	23	18	10
0.80	47	35	27	44	33	26	38	29	23	13
1.00	54	41	33	51	39	31	43	36	28	16
1.25	61	48	40	57	45	37	48	39	33	19
1.50	66	54	45	61	50	42	52	43	37	21
2.00	74	62	53	68	57	50	57	49	43	24
2.50	78	68	59	72	63	55	60	53	47	26
3.00	82	72	64	75	67	60	62	56	51	28
4.00	87	78	72	79	72	66	66	61	56	30
5.00	90	83	76	82	76	70	68	63	59	32
ROOM INDEX	UF(total)									Direct
According to DIN EN 13032-2 2004			Suspended				SHRNOM = 1.25			

C Range: 0 - 360DEG
 C Interval: 22.5DEG
 Test Speed: HIGH
 Temperature:25.2°C
 Operators:Dano
 Test Date:2023-06-13

γ Range: 0 - 180DEG
 γ Interval: 1.0DEG
 Test System:EVERFINE GO-R5000_V2 SYSTEM V2.00.459
 Humidity:55.3%
 Test Distance:2.900m [K=0.8810]
 Remarks:

ISOCANDELA DIAGRAM

Test:U:119.9V I:0.3108A P:36.84W PF:0.9884 Freq:60.01Hz Lamp Flux:2813.19x1 lm		
NAME: PT07-44-40S-952C5-MVTD-BK 5000K	TYPE:	WEIGHT:
SPEC.:	DIM.:	SERIAL No.:
MFR.: FOSHAN LEDKEY LIGHTING CO.,LTD.	SUR.:	Shielding Angle:

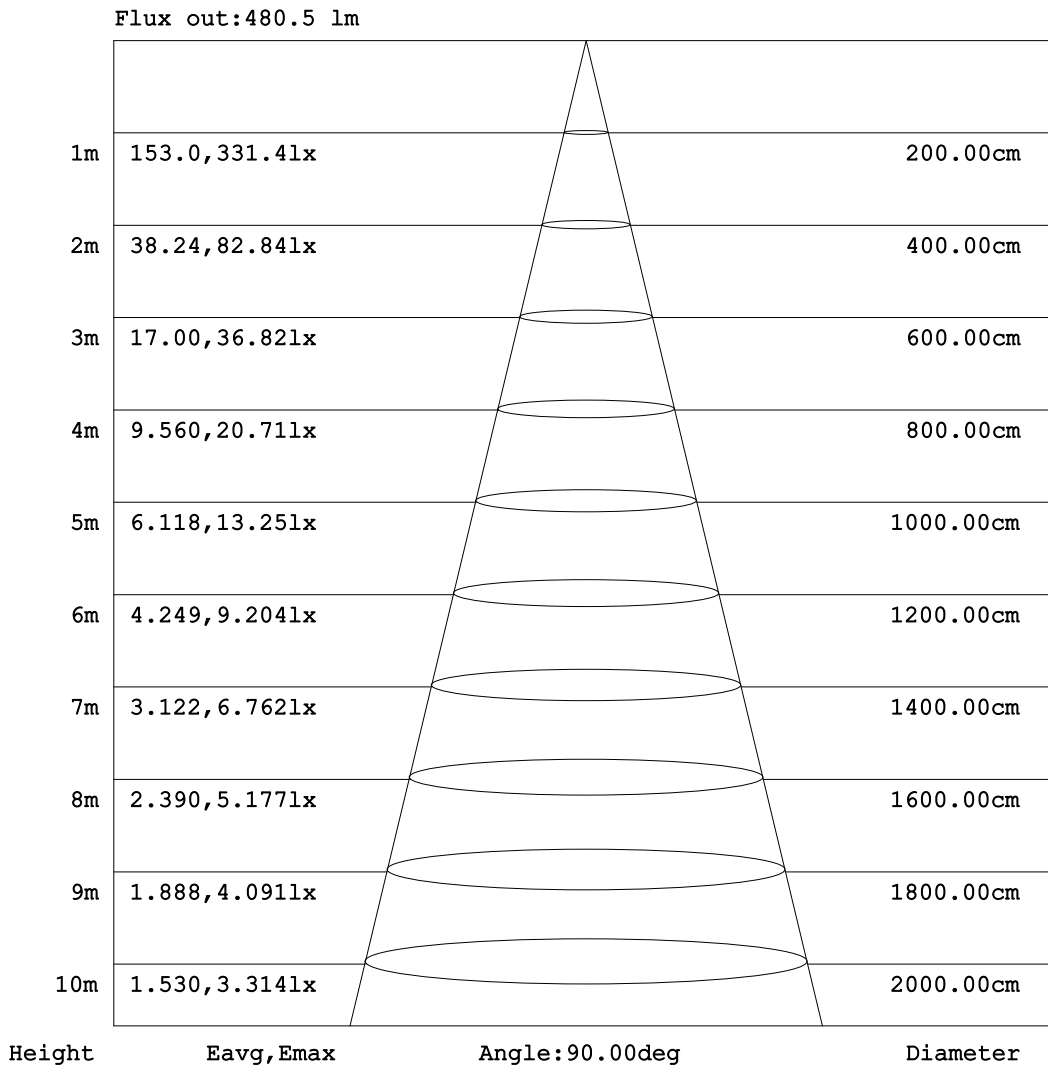


C Range: 0 - 360DEG
C Interval: 22.5DEG
Test Speed: HIGH
Temperature:25.2°C
Operators:Dano
Test Date:2023-06-13

γ Range: 0 - 180DEG
γ Interval: 1.0DEG
Test System:EVERFINE GO-R5000_V2 SYSTEM V2.00.459
Humidity:55.3%
Test Distance:2.900m [K=0.8810]
Remarks:

AAI Figure

Test:U:119.9V I:0.3108A P:36.84W PF:0.9884 Freq:60.01Hz Lamp Flux:2813.19x1 lm		
NAME: PT07-44-40S-952C5-MVTD-BK 5000K	TYPE:	WEIGHT:
SPEC.:	DIM.:	SERIAL No.:
MFR.: FOSHAN LEDKEY LIGHTING CO.,LTD.	SUR.:	Shielding Angle:



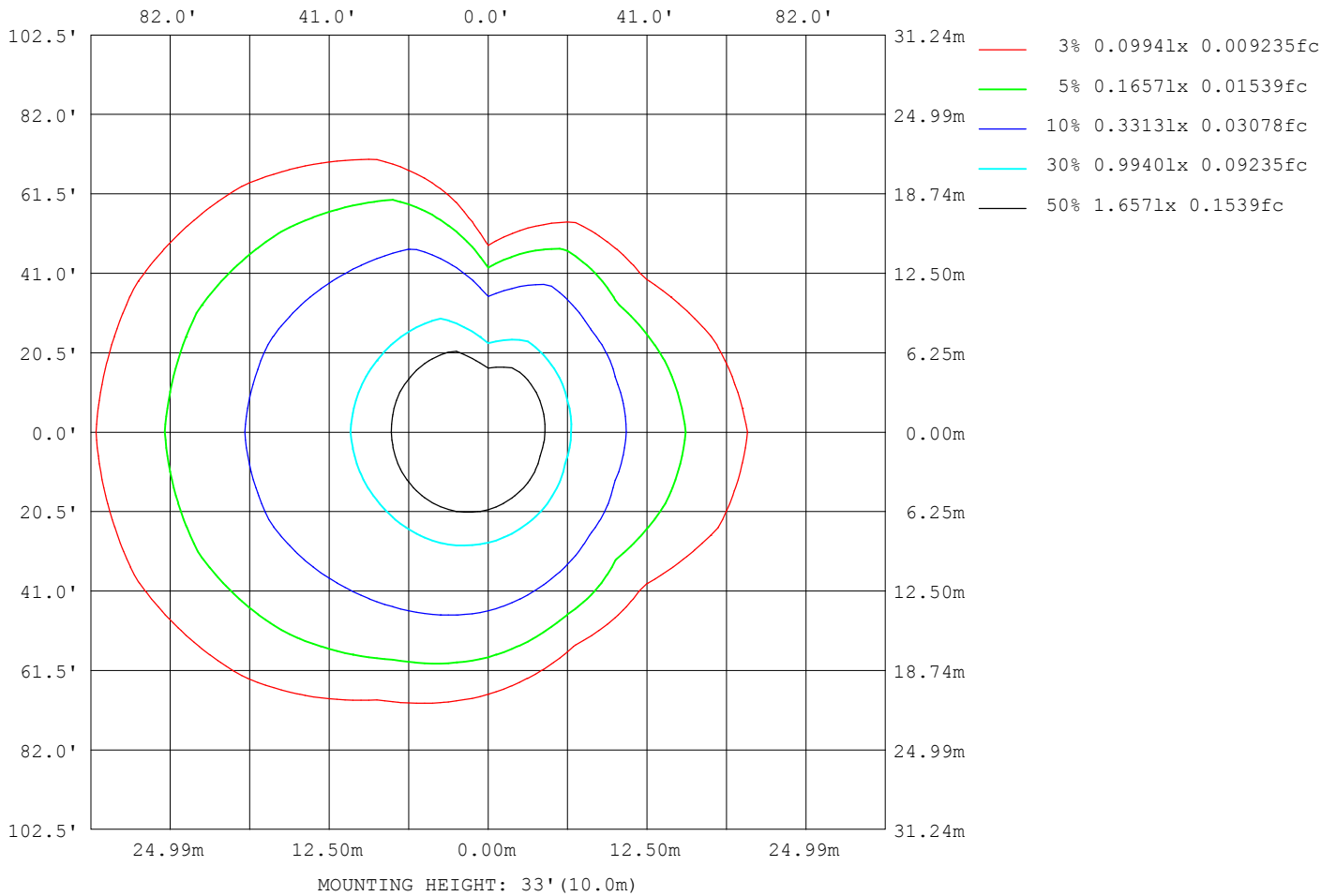
Note:The Curves indicate the illuminated area and the average illumination when the luminaire is at different distance.

C Range: 0 - 360DEG
 C Interval: 22.5DEG
 Test Speed: HIGH
 Temperature:25.2°C
 Operators:Dano
 Test Date:2023-06-13

γ Range: 0 - 180DEG
 γ Interval: 1.0DEG
 Test System:EVERFINE GO-R5000_V2 SYSTEM V2.00.459
 Humidity:55.3%
 Test Distance:2.900m [K=0.8810]
 Remarks:

ISOLUX DIAGRAM

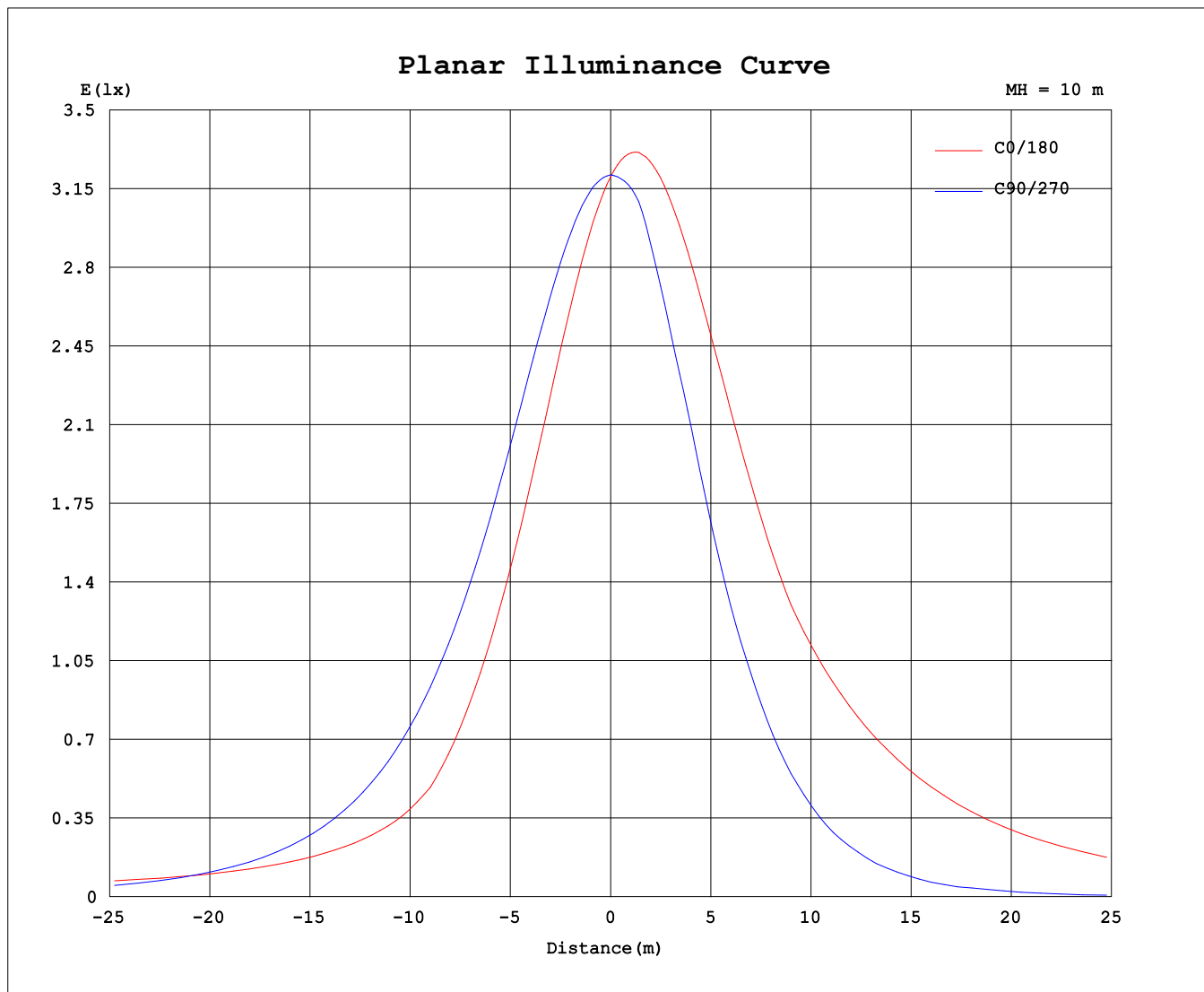
Test:U:119.9V I:0.3108A P:36.84W PF:0.9884 Freq:60.01Hz Lamp Flux:2813.19x1 lm		
NAME: PT07-44-40S-952C5-MVTD-BK 5000K	TYPE:	WEIGHT:
SPEC.:	DIM.:	SERIAL No.:
MFR.: FOSHAN LEDKEY LIGHTING CO.,LTD.	SUR.:	Shielding Angle:



C Range: 0 - 360DEG
 C Interval: 22.5DEG
 Test Speed: HIGH
 Temperature:25.2°C
 Operators:Dano
 Test Date:2023-06-13

γ Range: 0 - 180DEG
 γ Interval: 1.0DEG
 Test System:EVERFINE GO-R5000_V2 SYSTEM V2.00.459
 Humidity:55.3%
 Test Distance:2.900m [K=0.8810]
 Remarks:

Planar Illuminance Curve



C Range: 0 - 360DEG
C Interval: 22.5DEG
Test Speed: HIGH
Temperature: 25.2°C
Operators: Dano
Test Date: 2023-06-13

γ Range: 0 - 180DEG
γ Interval: 1.0DEG
Test System: EVERFINE GO-R5000_V2 SYSTEM V2.00.459
Humidity: 55.3%
Test Distance: 2.900m [K=0.8810]
Remarks:

LUMINOUS DISTRIBUTION INTENSITY DATA

Test:U:119.9V I:0.3108A P:36.84W PF:0.9884 Freq:60.01Hz Lamp Flux:2813.19x1 lm		
NAME: PT07-44-40S-952C5-MVTD-BK 5000K	TYPE:	WEIGHT:
SPEC.:	DIM.:	SERIAL No.:
MFR.: FOSHAN LEDKEY LIGHTING CO.,LTD.	SUR.:	Shielding Angle:

Table--1

UNIT: cd

C (DEG) γ (DEG)	0	22.5	45	67.5	90	112.5	135	157.5	180	202.5	225	247.5	270	292.5	315	337.5			
0	320	320	320	320	320	320	320	320	320	320	320	320	320	320	320	320			
5	304	304	308	313	319	325	329	333	334	334	330	326	320	314	309	305			
10	284	285	292	302	314	325	335	342	345	345	338	321	312	305	294	287			
15	262	263	275	289	307	323	337	347	351	352	342	327	293	291	278	267			
20	238	240	255	274	297	318	335	348	353	355	342	323	271	275	259	245			
25	213	215	234	257	285	311	331	345	351	353	339	314	243	257	238	221			
30	186	188	211	238	270	300	323	338	345	348	332	306	211	238	215	195			
35	158	161	186	218	253	287	311	327	335	339	322	299	180	216	191	168			
40	129	133	161	195	235	271	297	313	322	326	308	283	147	193	164	140			
45	111	109	134	171	214	253	280	301	317	311	292	266	115	168	137	113			
50	104	100	107	146	192	232	261	301	320	309	272	246	85.3	145	109	101			
55	103	97.7	85.9	120	167	210	250	304	326	311	259	223	59.2	119	88.5	96.6			
60	108	102	77.4	93.1	142	185	246	308	331	314	253	198	36.4	89.5	78.3	97.5			
65	120	112	76.1	65.8	115	159	243	311	335	317	249	170	22.5	61.6	74.7	105			
70	148	139	82.7	43.1	87.4	139	241	313	338	319	245	145	12.3	42.2	79.2	127			
75	177	168	104	35.2	59.5	126	239	313	339	318	241	128	10.5	35.0	99.9	154			
80	205	196	131	39.6	33.7	118	235	312	338	317	236	114	7.68	41.3	124	181			
85	231	223	158	61.1	11.9	110	231	309	336	313	230	104	2.74	61.2	148	207			
90	256	249	184	84.6	1.02	106	227	305	332	308	223	97.7	0.67	82.0	172	231			
95	279	272	208	108	8.92	109	224	301	327	303	219	100.0	5.54	102	193	253			
100	300	293	230	130	32.2	127	226	298	323	299	219	118	26.2	121	213	274			
105	319	312	249	151	61.0	145	240	301	322	299	234	136	49.6	140	231	292			
110	334	327	266	169	92.3	161	255	315	334	312	249	152	76.7	156	247	308			
115	347	339	279	185	125	175	267	327	346	325	262	166	105	171	260	320			
120	356	348	289	199	157	187	276	335	354	334	271	180	136	181	271	330			
125	360	352	296	213	187	203	282	338	358	339	277	197	167	187	278	336			
130	361	352	299	232	215	223	284	338	357	340	280	217	195	211	282	337			
135	357	347	298	252	241	244	283	333	352	337	280	236	223	231	283	335			
140	349	339	298	268	263	262	285	326	344	331	284	257	248	248	276	328			
145	337	329	304	282	280	281	294	316	330	323	293	276	260	259	274	317			
150	328	328	302	289	281	295	305	316	323	321	304	293	240	249	286	310			
155	328	331	307	280	272	308	315	321	324	324	315	309	229	214	273	303			
160	332	333	298	257	259	307	326	327	328	330	325	319	236	200	235	292			
165	329	317	271	238	241	276	328	334	332	336	331	318	220	205	208	238			
170	321	251	245	246	242	244	306	336	328	335	318	297	237	228	214	212			
175	262	212	252	258	263	255	268	275	295	303	276	264	250	254	245	232			
180	107	237	252	269	275	269	244	209	133	134	227	250	269	274	268	249			

C Range: 0 - 360DEG
 C Interval: 22.5DEG
 Test Speed: HIGH
 Temperature:25.2℃
 Operators:Dano
 Test Date:2023-06-13

γ Range: 0 - 180DEG
 γ Interval: 1.0DEG
 Test System:EVERFINE GO-R5000_V2 SYSTEM V2.00.459
 Humidity:55.3%
 Test Distance:2.900m [K=0.8810]
 Remarks: