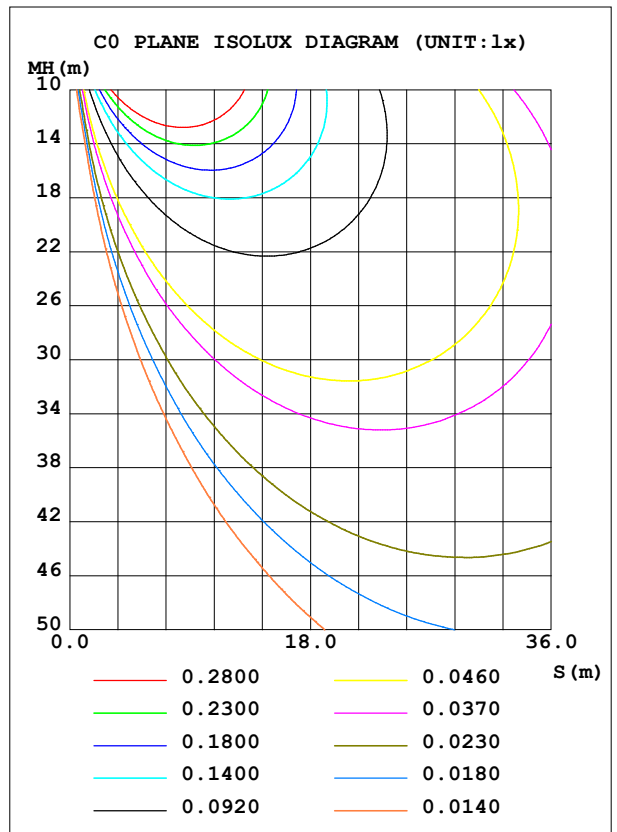
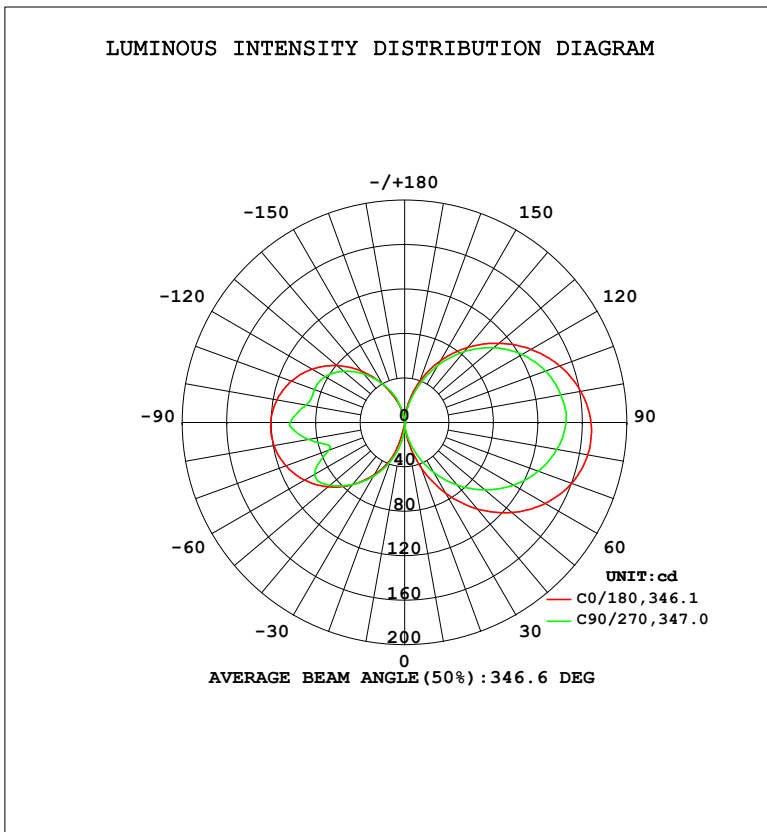


LUMINAIRE PHOTOMETRIC TEST REPORT

Test:U:120.1V I:0.2019A P:24.10W PF:0.9938 Freq:60.01Hz Lamp Flux:1234.69x1 lm		
NAME: PT27-4-3x8S-952C5-MVTD-SB002 2700K	TYPE:	WEIGHT:
SPEC.:	DIM.:	SERIAL No.:
MFR.: FOSHAN LEDKEY LIGHTING CO.,LTD.	SUR.:	Shielding Angle:

DATA OF LAMP		PHOTOMETRIC DATA				Eff: 51.23 lm/W
MODEL		I <sub>max</sub> (cd)	168.4	S/MH (C0/180)		14.42
NOMINAL POWER (W)		LOR (%)	100.0	S/MH (C90/270)		13.23
RATED VOLTAGE (V)	120	TOTAL FLUX (lm)	1234.7	η UP, DN (C0-180)		26.3, 25.7
NOMINAL FLUX (lm)	1234.69	CIE CLASS	DIFFUSE	η UP, DN (C180-360)		22.7, 25.2
LAMPS INSIDE	1	η up (%)	49.1	CIBSE SHR NOM		1.25
TEST VOLTAGE (V)	120	η down (%)	50.9	CIBSE SHR MAX		1.35



C Range: 0 - 360DEG  
 C Interval: 22.5DEG  
 Test Speed: HIGH  
 Temperature: 25.2 °C  
 Operators: Dano  
 Test Date: 2023-05-15

γ Range: 0 - 180DEG  
 γ Interval: 1.0DEG  
 Test System: EVERFINE GO-R5000\_V2 SYSTEM V2.00.459  
 Humidity: 55.3%  
 Test Distance: 2.900m [K=0.8810]  
 Remarks:

## ZONAL FLUX DIAGRAM

ZONAL FLUX DIAGRAM:

$\gamma$	C0	C45	C90	C135	C180	C225	C270	C315	$\gamma$	$\Phi$ zone	$\Phi$ total	%lum,lamp
10	13.94	5.840	9.170	9.340	1.584	21.92	18.25	13.21	0- 10	0.5763	0.5763	0.05,0.05
20	42.62	23.21	28.89	29.52	33.88	50.72	36.86	31.11	10- 20	6.772	7.348	0.60,0.60
30	73.26	45.16	51.33	52.59	53.92	76.78	55.70	53.00	20- 30	21.07	28.42	2.3,2.3
40	101.5	67.43	73.52	75.15	73.12	100.8	73.05	72.97	30- 40	42.19	70.61	5.72,5.72
50	126.1	87.58	94.42	96.12	90.11	121.8	87.94	89.65	40- 50	67.85	138.5	11.2,11.2
60	145.9	104.3	113.1	114.7	103.9	139.1	93.38	102.4	50- 60	94.37	232.8	18.9,18.9
70	160.1	116.6	128.2	129.9	113.9	151.4	72.73	110.9	60- 70	117.1	350.0	28.3,28.3
80	167.4	124.0	139.2	140.5	119.4	158.3	88.06	115.0	70- 80	134.1	484.1	39.2,39.2
90	167.6	126.2	145.1	145.9	120.5	158.9	103.0	114.7	80- 90	144.7	628.8	50.9,50.9
100	160.9	122.5	142.8	145.3	116.8	153.3	90.25	110.0	90-100	143.8	772.6	62.6,62.6
110	148.6	113.8	135.1	138.6	108.7	142.1	86.55	101.3	100-110	132.4	905.0	73.3,73.3
120	131.5	101.1	122.2	126.0	96.11	125.7	82.66	88.65	110-120	114.0	1019	82.5,82.5
130	111.0	85.51	104.7	108.5	79.70	104.2	71.83	73.43	120-130	89.91	1109	89.8,89.8
140	88.07	67.24	83.16	86.77	60.43	80.04	56.98	56.26	130-140	63.49	1172	95,95
150	63.73	46.94	58.69	62.01	39.69	54.26	40.31	37.50	140-150	38.41	1211	98.1,98.1
160	38.66	26.43	33.03	35.74	21.12	28.53	24.32	19.26	150-160	18.19	1229	99.5,99.5
170	15.14	9.121	10.02	11.66	3.314	6.231	6.388	5.796	160-170	5.268	1234	100,100
180	0	0	0.2688	0.4079	0.2269	0.2282	0.2309	0.3207	170-180	0.3995	1235	100,100
DEG	LUMINOUS INTENSITY:cd									UNIT:lm		

Conical surface Flux(90deg): 101.17 lm

%lum = 8.2%

%lamp = 8.2%

Conical surface Flux(120deg): 232.82 lm

%lum = 18.9%

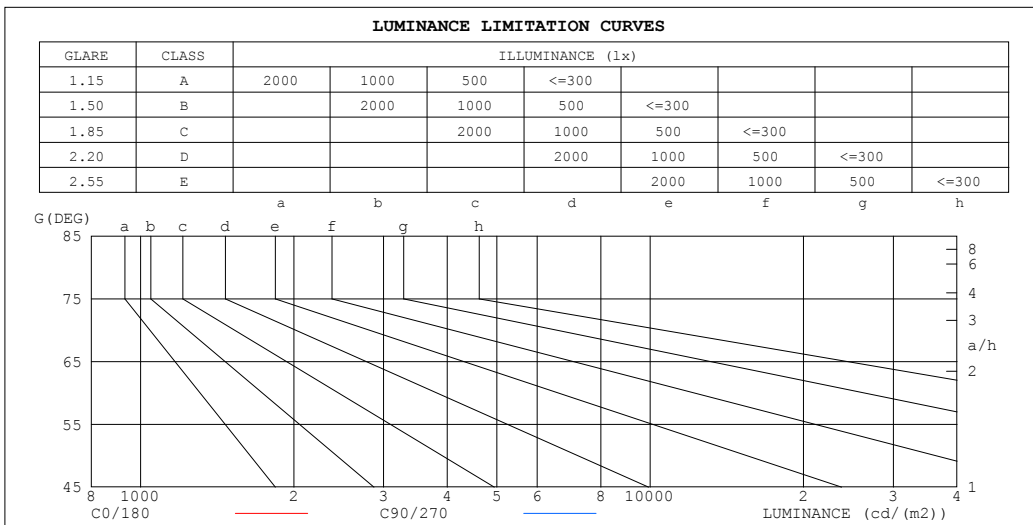
%lamp = 18.9%

C Range: 0 - 360DEG  
C Interval: 22.5DEG  
Test Speed: HIGH  
Temperature:25.2℃  
Operators:Dano  
Test Date:2023-05-15

$\gamma$  Range: 0 - 180DEG  
 $\gamma$  Interval: 1.0DEG  
Test System:EVERFINE GO-R5000\_V2 SYSTEM V2.00.459  
Humidity:55.3%  
Test Distance:2.900m [K=0.8810]  
Remarks:

LUMINANCE LIMITATION CURVES

Test:U:120.1V I:0.2019A P:24.10W PF:0.9938 Freq:60.01Hz Lamp Flux:1234.69x1 lm		
NAME: PT27-4-3x8S-952C5-MVTD-SB002 2700K	TYPE:	WEIGHT:
SPEC.:	DIM.:	SERIAL No.:
MFR.: FOSHAN LEDKEY LIGHTING CO.,LTD.	SUR.:	Shielding Angle:



LUMINANCE cd/(m2)		
G (DEG)	C0/180	C90/270
85	1454634	1372168
80	725793	669609
75	478860	433488
70	352491	313077
65	273964	239275
60	219770	188973
55	179445	151653
50	147783	122714
45	121744	99433

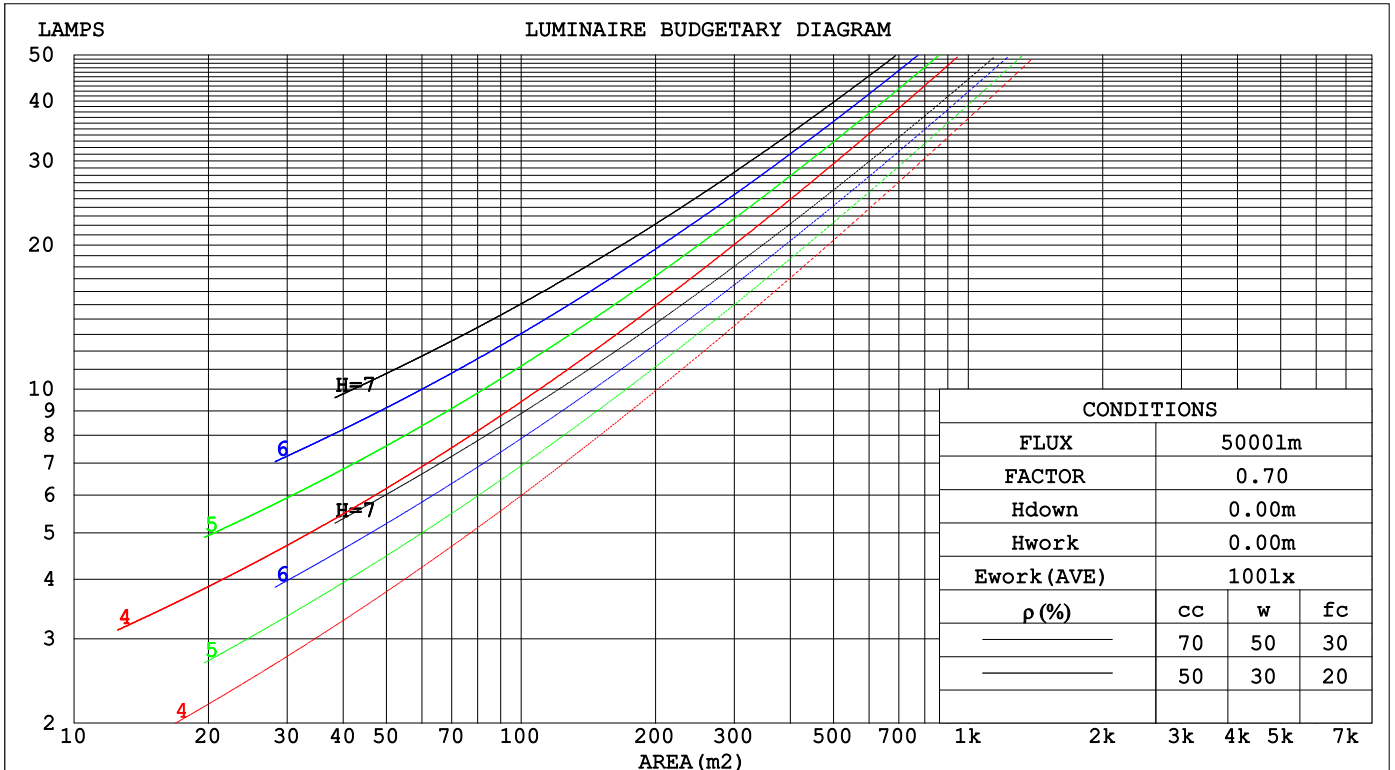
C Range: 0 - 360DEG  
 C Interval: 22.5DEG  
 Test Speed: HIGH  
 Temperature:25.2℃  
 Operators:Dano  
 Test Date:2023-05-15

γ Range: 0 - 180DEG  
 γ Interval: 1.0DEG  
 Test System:EVERFINE GO-R5000\_V2 SYSTEM V2.00.459  
 Humidity:55.3%  
 Test Distance:2.900m [K=0.8810]  
 Remarks:

**CU AND LUMINAIRE BUDGETARY ESTIMATE DIAGRAM**

Test:U:120.1V I:0.2019A P:24.10W PF:0.9938 Freq:60.01Hz Lamp Flux:1234.69x1 lm		
NAME: PT27-4-3x8S-952C5-MVTD-SB002 2700K	TYPE:	WEIGHT:
SPEC.:	DIM.:	SERIAL No.:
MFR.: FOSHAN LEDKEY LIGHTING CO.,LTD.	SUR.:	Shielding Angle:

pcc	80%			70%			50%			30%			10%			0
pw	50%	30%	10%	50%	30%	10%	50%	30%	10%	50%	30%	10%	50%	30%	10%	0
pfc	20%			20%			20%			20%			20%			0
RCR	RCR:Room Cavity Ratio						Coefficients of Utilization(CU)									
0.0	1.07	1.07	1.07	.99	.99	.99	.84	.84	.84	.70	.70	.70	.57	.57	.57	.51
1.0	.85	.79	.73	.78	.72	.67	.64	.60	.56	.52	.49	.46	.41	.38	.36	.30
2.0	.71	.62	.55	.65	.57	.51	.53	.47	.42	.42	.38	.34	.32	.29	.26	.21
3.0	.60	.51	.43	.55	.46	.40	.45	.38	.33	.36	.30	.26	.27	.23	.19	.15
4.0	.52	.42	.35	.48	.39	.32	.39	.32	.26	.31	.25	.21	.23	.19	.15	.11
5.0	.46	.36	.29	.42	.33	.26	.34	.27	.21	.27	.21	.17	.20	.16	.12	.09
6.0	.40	.31	.24	.37	.28	.22	.30	.23	.18	.24	.18	.14	.18	.13	.10	.07
7.0	.36	.27	.20	.33	.25	.19	.27	.20	.15	.21	.16	.12	.16	.12	.08	.06
8.0	.32	.24	.17	.30	.22	.16	.24	.18	.13	.19	.14	.10	.14	.10	.07	.05
9.0	.29	.21	.15	.27	.19	.14	.22	.16	.11	.17	.12	.09	.13	.09	.06	.04
10.0	.27	.19	.13	.24	.17	.12	.20	.14	.10	.16	.11	.08	.12	.08	.05	.03



C Range: 0 - 360DEG  
 C Interval: 22.5DEG  
 Test Speed: HIGH  
 Temperature:25.2°C  
 Operators:Dano  
 Test Date:2023-05-15

γ Range: 0 - 180DEG  
 γ Interval: 1.0DEG  
 Test System:EVERFINE GO-R5000\_V2 SYSTEM V2.00.459  
 Humidity:55.3%  
 Test Distance:2.900m [K=0.8810]  
 Remarks:

WEC AND CCEC

Test:U:120.1V I:0.2019A P:24.10W PF:0.9938 Freq:60.01Hz Lamp Flux:1234.69x1 lm		
NAME: PT27-4-3x8S-952C5-MVTD-SB002 2700K	TYPE:	WEIGHT:
SPEC.:	DIM.:	SERIAL No.:
MFR.: FOSHAN LEDKEY LIGHTING CO.,LTD.	SUR.:	Shielding Angle:

ρcc	80%			70%			50%			30%			10%			0
ρw	50%	30%	10%	50%	30%	10%	50%	30%	10%	50%	30%	10%	50%	30%	10%	0
ρfc	20%			20%			20%			20%			20%			0
RCR	RCR:Room Cavity Ratio						Wall Exitance Coefficients(WEC)									
0.0																
1.0	.445	.253	.080	.423	.241	.077	.381	.219	.070	.343	.198	.063	.308	.178	.057	
2.0	.365	.200	.061	.345	.190	.059	.307	.171	.053	.272	.152	.048	.239	.135	.043	
3.0	.315	.168	.050	.297	.159	.048	.262	.142	.043	.229	.126	.039	.200	.110	.034	
4.0	.278	.145	.043	.262	.137	.040	.230	.122	.036	.200	.107	.032	.172	.094	.028	
5.0	.250	.127	.037	.234	.120	.035	.205	.107	.031	.177	.094	.028	.152	.081	.024	
6.0	.227	.114	.033	.212	.107	.031	.185	.095	.028	.160	.083	.024	.136	.072	.021	
7.0	.207	.103	.029	.194	.097	.028	.169	.085	.025	.146	.075	.022	.123	.064	.019	
8.0	.191	.093	.026	.179	.088	.025	.156	.078	.022	.134	.068	.020	.113	.058	.017	
9.0	.177	.086	.024	.166	.081	.023	.144	.071	.020	.124	.062	.018	.104	.053	.015	
10.0	.165	.079	.022	.155	.075	.021	.134	.066	.019	.115	.057	.016	.097	.049	.014	

ρcc	80%			70%			50%			30%			10%			0
ρw	50%	30%	10%	50%	30%	10%	50%	30%	10%	50%	30%	10%	50%	30%	10%	0
ρfc	20%			20%			20%			20%			20%			0
RCR	RCR:Room Cavity Ratio						Ceiling Cavity Exitance Coefficients(CCEC)									
0.0	.564	.564	.564	.482	.482	.482	.329	.329	.329	.189	.189	.189	.060	.060	.060	
1.0	.567	.532	.501	.485	.457	.431	.332	.314	.298	.191	.182	.173	.061	.059	.056	
2.0	.562	.511	.469	.481	.440	.405	.330	.304	.283	.190	.177	.166	.061	.057	.054	
3.0	.555	.496	.449	.476	.428	.390	.327	.297	.273	.189	.174	.161	.061	.056	.053	
4.0	.547	.485	.437	.470	.419	.380	.323	.292	.267	.187	.171	.158	.060	.056	.052	
5.0	.540	.476	.429	.464	.412	.373	.319	.288	.263	.185	.169	.156	.060	.055	.052	
6.0	.532	.469	.423	.458	.406	.368	.316	.284	.261	.183	.167	.155	.059	.055	.051	
7.0	.525	.463	.419	.452	.401	.365	.312	.281	.259	.181	.166	.154	.059	.054	.051	
8.0	.519	.457	.415	.446	.397	.362	.309	.279	.257	.180	.164	.153	.058	.054	.051	
9.0	.512	.453	.413	.441	.393	.360	.306	.276	.256	.178	.163	.153	.058	.054	.051	
10.0	.507	.449	.411	.437	.390	.359	.303	.274	.255	.177	.162	.152	.057	.053	.050	

C Range: 0 - 360DEG  
 C Interval: 22.5DEG  
 Test Speed: HIGH  
 Temperature:25.2℃  
 Operators:Dano  
 Test Date:2023-05-15

γ Range: 0 - 180DEG  
 γ Interval: 1.0DEG  
 Test System:EVERFINE GO-R5000\_V2 SYSTEM V2.00.459  
 Humidity:55.3%  
 Test Distance:2.900m [K=0.8810]  
 Remarks:

UGR(Unified Glare Rating) Table

Test:U:120.1V I:0.2019A P:24.10W PF:0.9938 Freq:60.01Hz										
Lamp Flux:1234.69x1 lm										
NAME: PT27-4-3x8S-952C5-MVTD-SB002 2700K					TYPE:			WEIGHT:		
SPEC.:					DIM.:			SERIAL No.:		
MFR.: FOSHAN LEDKEY LIGHTING CO.,LTD.					SUR.:			Shielding Angle:		
ceiling/cavity	0.7	0.7	0.5	0.5	0.3	0.7	0.7	0.5	0.5	0.3
walls	0.5	0.3	0.5	0.3	0.3	0.5	0.3	0.5	0.3	0.3
working plane	0.2	0.2	0.2	0.2	0.2	0.2	0.2	0.2	0.2	0.2
Room dimensions	Viewed crosswise					Viewed endwise				
x = 2H y = 2H	24.5	26.7	26.2	28.5	30.9	25.1	27.3	26.8	29.1	31.5
3H	28.4	30.4	30.2	32.3	34.8	28.8	30.9	30.6	32.7	35.2
4H	30.5	32.4	32.3	34.3	36.8	30.8	32.7	32.6	34.6	37.1
6H	32.7	34.5	34.6	36.4	38.9	32.9	34.7	34.7	36.6	39.1
8H	33.9	35.6	35.8	37.6	40.1	34.0	35.8	35.9	37.7	40.2
12H	35.3	36.9	37.1	38.9	41.4	35.3	37.0	37.2	38.9	41.5
4H 2H	24.8	26.7	26.6	28.6	31.1	25.6	27.5	27.4	29.4	31.9
3H	28.9	30.6	30.7	32.5	35.0	29.6	31.3	31.5	33.2	35.8
4H	31.1	32.6	33.0	34.6	37.2	31.8	33.3	33.7	35.3	37.9
6H	33.5	34.9	35.4	36.9	39.5	34.1	35.5	36.0	37.5	40.1
8H	34.8	36.1	36.8	38.1	40.8	35.3	36.7	37.3	38.7	41.3
12H	36.3	37.6	38.3	39.6	42.2	36.7	38.0	38.7	40.0	42.6
8H 4H	31.4	32.7	33.3	34.7	37.3	32.3	33.6	34.2	35.6	38.2
6H	34.1	35.2	36.0	37.3	39.9	34.9	36.1	36.9	38.1	40.7
8H	35.6	36.6	37.6	38.7	41.3	36.4	37.4	38.4	39.5	42.1
12H	37.3	38.2	39.3	40.3	43.0	38.1	39.0	40.1	41.0	43.8
12H 4H	31.5	32.7	33.5	34.7	37.4	32.3	33.6	34.3	35.6	38.2
6H	34.2	35.3	36.2	37.3	40.0	35.1	36.2	37.1	38.2	40.9
8H	35.8	36.8	37.9	38.8	41.5	36.8	37.7	38.8	39.7	42.4
CIE190: 2010										

CIE190: 2010  
Area: 0.001257 m2

C Range: 0 - 360DEG  
C Interval: 22.5DEG  
Test Speed: HIGH  
Temperature:25.2℃  
Operators:Dano  
Test Date:2023-05-15

γ Range: 0 - 180DEG  
γ Interval: 1.0DEG  
Test System:EVERFINE GO-R5000\_V2 SYSTEM V2.00.459  
Humidity:55.3%  
Test Distance:2.900m [K=0.8810]  
Remarks:

## UTILIZATION FACTORS TABLE

Test:U:120.1V I:0.2019A P:24.10W PF:0.9938 Freq:60.01Hz Lamp Flux:1234.69x1 lm		
NAME: PT27-4-3x8S-952C5-MVTD-SB002 2700K	TYPE:	WEIGHT:
SPEC.:	DIM.:	SERIAL No.:
MFR.: FOSHAN LEDKEY LIGHTING CO.,LTD.	SUR.:	Shielding Angle:

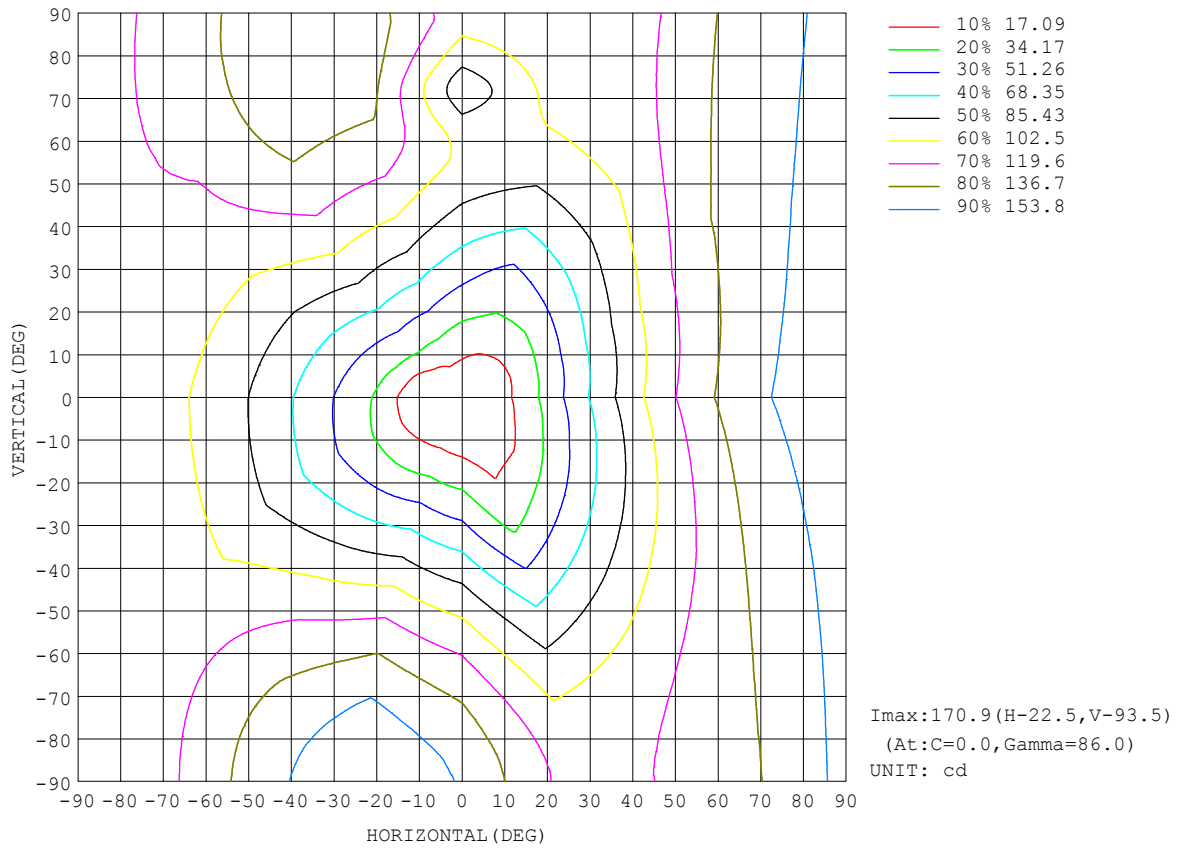
REFLECTANCE										
Ceiling	0.8	0.8	0.8	0.7	0.7	0.7	0.5	0.5	0.5	0
Walls	0.7	0.5	0.3	0.7	0.5	0.3	0.7	0.5	0.3	0
Working plane	0.2	0.2	0.2	0.2	0.2	0.2	0.2	0.2	0.2	0
ROOM INDEX	UTILIZATION FACTORS (PERCENT) $k(RI) \times RCR = 5$									
k = 0.60	33	20	13	32	19	12	28	17	11	4
0.80	42	27	18	39	26	18	34	23	16	6
1.00	49	34	24	46	32	23	40	30	20	9
1.25	56	41	31	52	38	29	45	33	25	12
1.50	61	46	36	57	43	34	48	38	30	14
2.00	69	55	45	64	51	42	54	44	37	19
2.50	74	62	51	69	57	48	58	49	42	22
3.00	79	67	57	73	62	53	61	53	46	24
4.00	84	74	65	78	68	61	65	58	52	28
5.00	88	79	71	81	73	66	68	62	56	31
ROOM INDEX	UF(total)									Direct
According to DIN EN 13032-2 2004			Suspended				SHRNOM = 1.25			

C Range: 0 - 360DEG  
C Interval: 22.5DEG  
Test Speed: HIGH  
Temperature:25.2℃  
Operators:Dano  
Test Date:2023-05-15

$\gamma$  Range: 0 - 180DEG  
 $\gamma$  Interval: 1.0DEG  
Test System:EVERFINE GO-R5000\_V2 SYSTEM V2.00.459  
Humidity:55.3%  
Test Distance:2.900m [K=0.8810]  
Remarks:

ISOCANDELA DIAGRAM

Test:U:120.1V I:0.2019A P:24.10W PF:0.9938 Freq:60.01Hz Lamp Flux:1234.69x1 lm		
NAME: PT27-4-3x8S-952C5-MVTD-SB002 2700K	TYPE:	WEIGHT:
SPEC.:	DIM.:	SERIAL No.:
MFR.: FOSHAN LEDKEY LIGHTING CO.,LTD.	SUR.:	Shielding Angle:



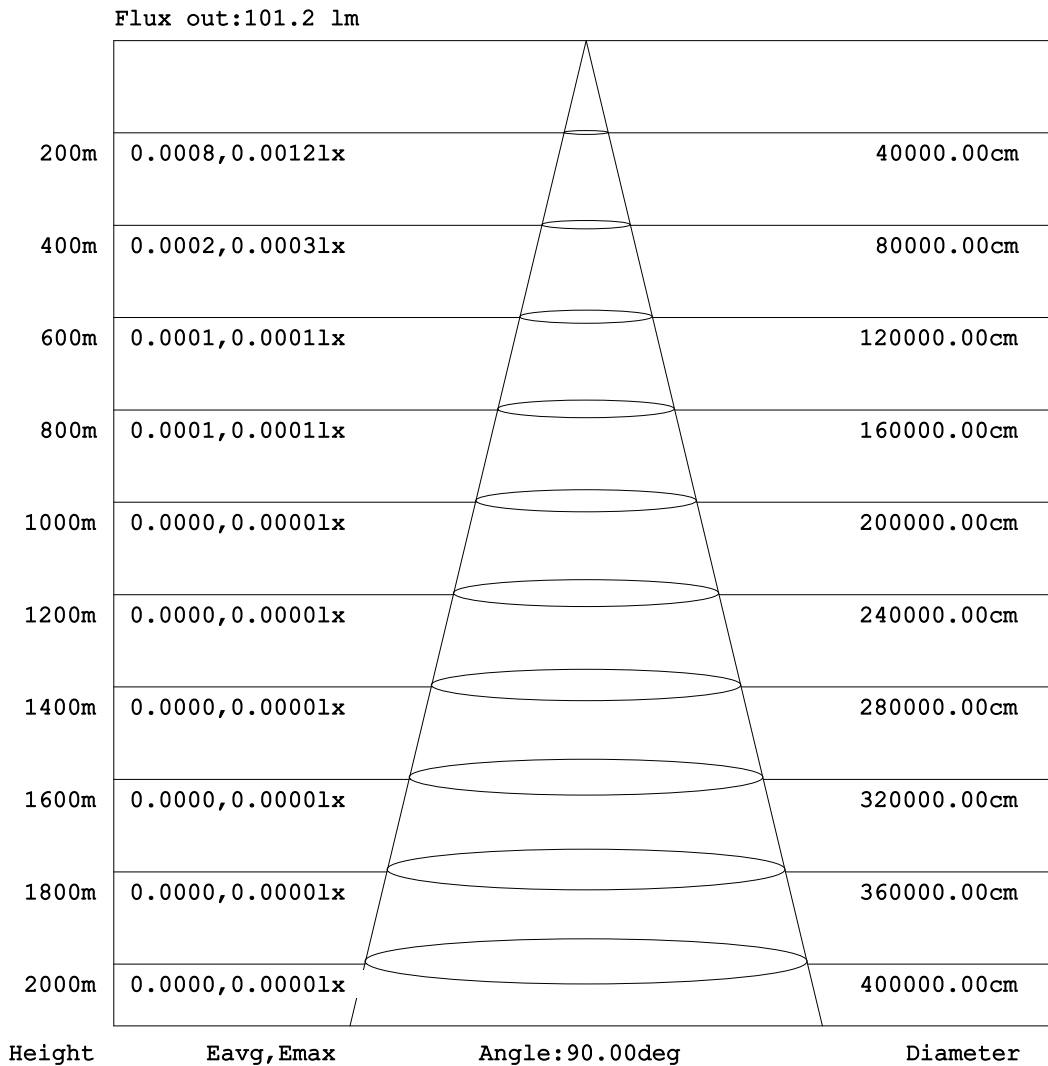
C Range: 0 - 360DEG  
C Interval: 22.5DEG  
Test Speed: HIGH  
Temperature:25.2℃  
Operators:Dano  
Test Date:2023-05-15

γ Range: 0 - 180DEG  
γ Interval: 1.0DEG  
Test System:EVERFINE GO-R5000\_V2 SYSTEM V2.00.459  
Humidity:55.3%  
Test Distance:2.900m [K=0.8810]  
Remarks:



**AAI Figure**

Test:U:120.1V I:0.2019A P:24.10W PF:0.9938 Freq:60.01Hz Lamp Flux:1234.69x1 lm		
NAME: PT27-4-3x8S-952C5-MVTD-SB002 2700K	TYPE:	WEIGHT:
SPEC.:	DIM.:	SERIAL No.:
MFR.: FOSHAN LEDKEY LIGHTING CO.,LTD.	SUR.:	Shielding Angle:



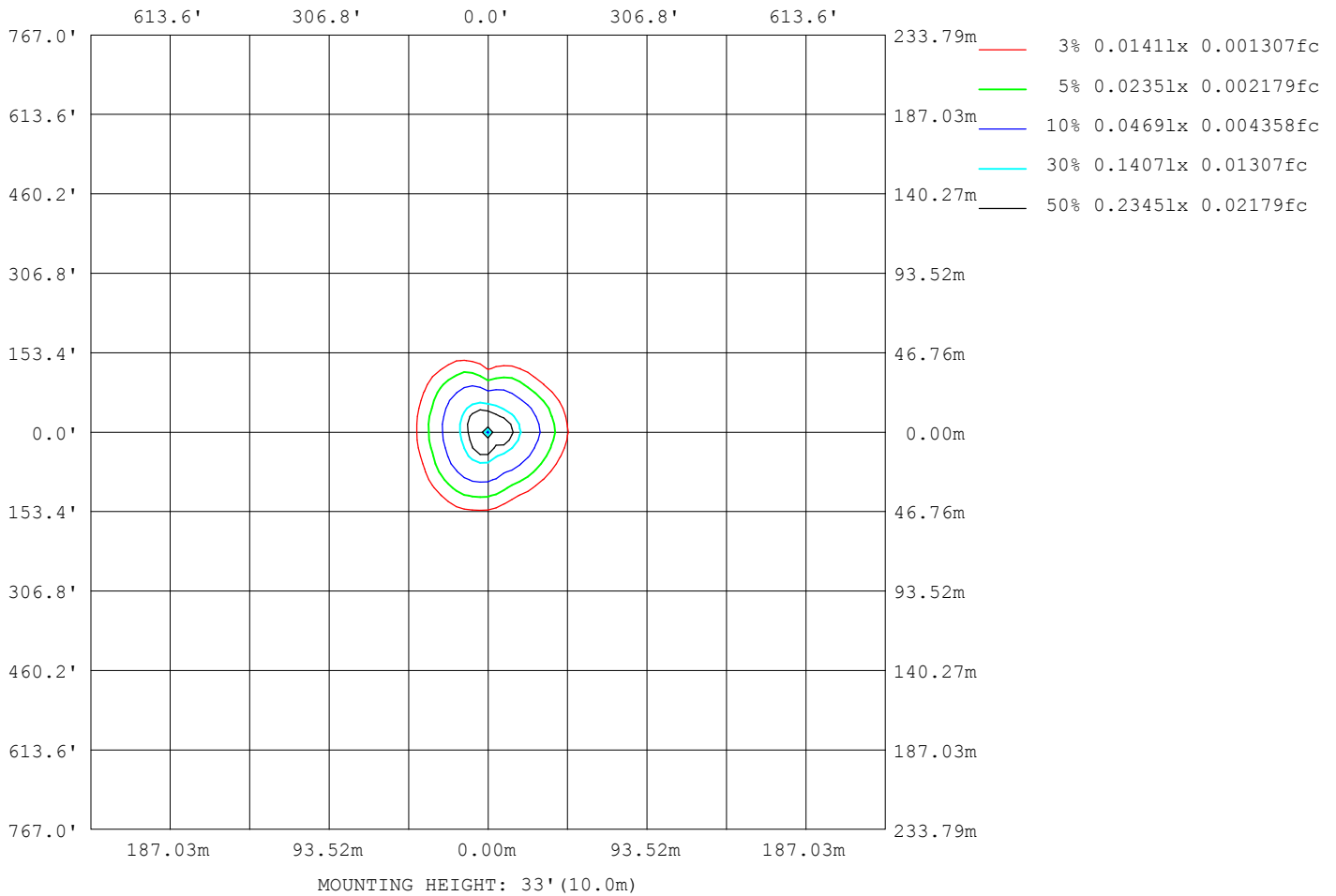
Note:The Curves indicate the illuminated area and the average illumination when the luminaire is at different distance.

C Range: 0 - 360DEG  
 C Interval: 22.5DEG  
 Test Speed: HIGH  
 Temperature:25.2℃  
 Operators:Dano  
 Test Date:2023-05-15

γ Range: 0 - 180DEG  
 γ Interval: 1.0DEG  
 Test System:EVERFINE GO-R5000\_V2 SYSTEM V2.00.459  
 Humidity:55.3%  
 Test Distance:2.900m [K=0.8810]  
 Remarks:

ISOLUX DIAGRAM

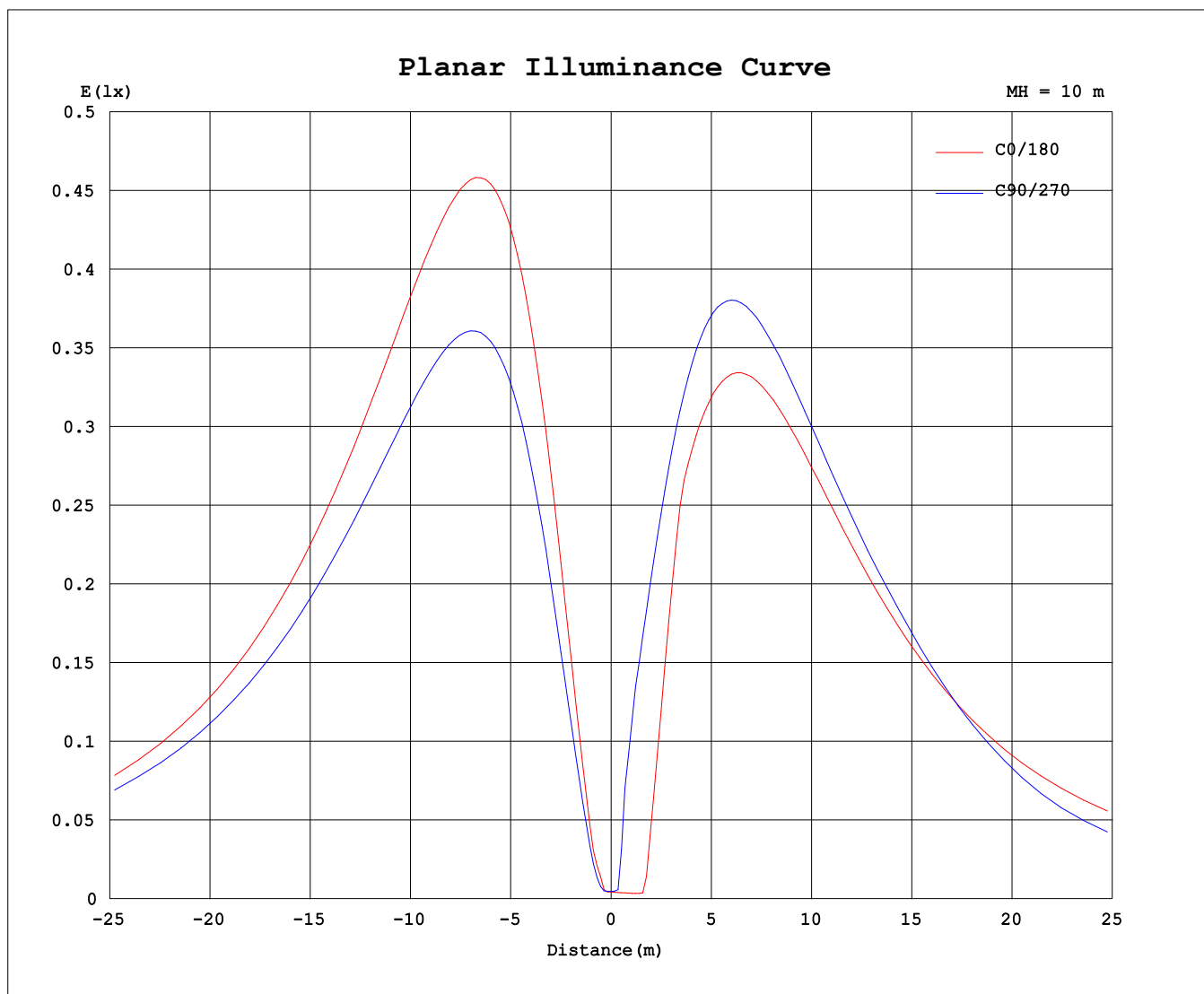
Test:U:120.1V I:0.2019A P:24.10W PF:0.9938 Freq:60.01Hz Lamp Flux:1234.69x1 lm		
NAME: PT27-4-3x8S-952C5-MVTD-SB002 2700K	TYPE:	WEIGHT:
SPEC.:	DIM.:	SERIAL No.:
MFR.: FOSHAN LEDKEY LIGHTING CO.,LTD.	SUR.:	Shielding Angle:



C Range: 0 - 360DEG  
 C Interval: 22.5DEG  
 Test Speed: HIGH  
 Temperature:25.2°C  
 Operators:Dano  
 Test Date:2023-05-15

γ Range: 0 - 180DEG  
 γ Interval: 1.0DEG  
 Test System:EVERFINE GO-R5000\_V2 SYSTEM V2.00.459  
 Humidity:55.3%  
 Test Distance:2.900m [K=0.8810]  
 Remarks:

Planar Illuminance Curve



C Range: 0 - 360DEG  
 C Interval: 22.5DEG  
 Test Speed: HIGH  
 Temperature: 25.2°C  
 Operators: Dano  
 Test Date: 2023-05-15

γ Range: 0 - 180DEG  
 γ Interval: 1.0DEG  
 Test System: EVERFINE GO-R5000\_V2 SYSTEM V2.00.459  
 Humidity: 55.3%  
 Test Distance: 2.900m [K=0.8810]  
 Remarks:

LUMINOUS DISTRIBUTION INTENSITY DATA

Test:U:120.1V I:0.2019A P:24.10W PF:0.9938 Freq:60.01Hz Lamp Flux:1234.69x1 lm		
NAME: PT27-4-3x8S-952C5-MVTD-SB002 2700K	TYPE:	WEIGHT:
SPEC.:	DIM.:	SERIAL No.:
MFR.: FOSHAN LEDKEY LIGHTING CO.,LTD.	SUR.:	Shielding Angle:

Table--1

UNIT: cd

C (DEG) γ (DEG)	0	22.5	45	67.5	90	112.5	135	157.5	180	202.5	225	247.5	270	292.5	315	337.5			
0	0.46	0.46	0.46	0.46	0.46	0.46	0.46	0.46	0.46	0.46	0.46	0.46	0.46	0.46	0.46	0.46			
5	3.30	2.29	0.90	1.24	2.18	2.58	1.56	0.36	0.40	0.44	0.91	7.00	8.89	7.66	5.87	4.16			
10	13.9	11.0	5.84	5.76	9.17	10.7	9.34	5.30	1.58	9.53	21.9	22.8	18.2	14.6	13.2	11.8			
15	27.6	22.4	13.6	11.8	18.3	20.9	18.9	15.5	17.3	30.3	37.3	34.8	27.4	23.6	21.4	22.8			
20	42.6	35.3	23.2	16.4	28.9	32.8	29.5	27.2	33.9	43.2	50.7	47.2	36.9	31.3	31.1	35.5			
25	58.1	48.6	33.9	20.7	40.0	45.4	41.0	36.7	43.9	54.4	63.9	59.5	46.3	36.9	42.2	48.4			
30	73.3	61.8	45.2	27.4	51.3	58.0	52.6	45.9	53.9	65.3	76.8	71.4	55.7	43.4	53.0	61.2			
35	87.8	74.7	56.4	36.4	62.5	70.5	64.0	54.9	63.7	75.7	89.1	82.7	64.6	52.6	63.3	73.3			
40	101	86.8	67.4	46.2	73.5	82.8	75.1	63.7	73.1	85.5	101	93.5	73.0	62.2	73.0	84.7			
45	114	98.0	77.8	56.1	84.2	94.8	85.8	72.0	81.9	94.5	112	103	80.8	71.0	81.8	95.3			
50	126	108	87.6	65.7	94.4	106	96.1	79.8	90.1	103	122	113	87.9	79.2	89.6	105			
55	137	117	96.5	74.9	104	117	106	86.9	97.5	110	131	121	93.6	86.4	96.5	114			
60	146	125	104	83.5	113	127	115	93.2	104	117	139	128	93.4	92.8	102	121			
65	154	132	111	91.6	121	136	123	98.7	109	122	146	134	84.5	98.1	107	128			
70	160	137	117	98.8	128	145	130	103	114	126	151	139	72.7	102	111	133			
75	165	141	121	105	134	152	136	107	117	130	156	143	74.9	105	113	137			
80	167	143	124	111	139	157	141	110	119	132	158	145	88.1	107	115	139			
85	168	144	126	115	143	161	144	111	121	133	159	146	98.4	108	115	140			
90	168	143	126	117	145	163	146	112	120	132	159	146	103	107	115	139			
95	165	141	125	116	145	164	146	112	119	130	157	144	97.3	105	113	138			
100	161	138	123	113	143	162	145	110	117	127	153	140	90.2	102	110	134			
105	155	133	119	110	140	159	143	107	113	123	148	136	86.8	98.0	106	130			
110	149	128	114	108	135	154	139	104	109	118	142	130	86.5	93.1	101	125			
115	141	121	108	105	129	148	133	98.8	103	112	135	123	85.5	87.4	95.4	118			
120	132	113	101	101	122	140	126	93.0	96.1	105	126	115	82.7	80.7	88.7	110			
125	122	105	93.7	95.2	114	130	118	86.3	88.3	97.2	115	107	77.9	73.6	81.3	102			
130	111	95.8	85.5	88.0	105	119	108	78.7	79.7	88.3	104	97.0	71.8	65.9	73.4	92.4			
135	99.8	86.2	76.7	79.4	94.3	108	98.2	70.2	70.4	78.5	92.4	86.8	64.7	57.6	65.1	82.3			
140	88.1	76.1	67.2	69.8	83.2	94.9	86.8	61.2	60.4	67.8	80.0	76.3	57.0	49.1	56.3	71.7			
145	76.1	65.7	57.3	59.4	71.2	81.6	74.8	51.7	50.0	55.7	67.1	65.4	48.8	40.9	47.0	60.4			
150	63.7	54.9	46.9	48.6	58.7	67.7	62.0	41.9	39.7	42.9	54.3	54.1	40.3	33.2	37.5	48.6			
155	51.2	44.0	36.5	37.6	45.8	53.3	48.9	32.2	29.7	31.2	42.2	41.8	32.4	26.1	28.0	36.8			
160	38.7	33.2	26.4	26.7	33.0	38.9	35.7	23.1	21.1	21.2	28.5	29.1	24.3	18.9	19.3	25.8			
165	26.4	22.7	17.0	16.7	20.8	24.9	22.9	14.8	11.5	11.7	16.2	17.2	15.1	11.3	11.6	16.1			
170	15.1	13.2	9.12	7.97	10.0	12.3	11.7	7.33	3.31	3.42	6.23	7.44	6.39	4.52	5.80	8.76			
175	5.58	5.11	3.35	2.02	1.91	2.72	2.64	1.60	0.56	0.57	0.65	0.84	0.65	0.31	0.37	3.91			
180	0.00	0.00	0.00	0.00	0.27	0.28	0.41	0.17	0.23	0.24	0.23	0.19	0.23	0.30	0.32	0.29			

C Range: 0 - 360DEG  
 C Interval: 22.5DEG  
 Test Speed: HIGH  
 Temperature:25.2℃  
 Operators:Dano  
 Test Date:2023-05-15

γ Range: 0 - 180DEG  
 γ Interval: 1.0DEG  
 Test System:EVERFINE GO-R5000\_V2 SYSTEM V2.00.459  
 Humidity:55.3%  
 Test Distance:2.900m [K=0.8810]  
 Remarks: