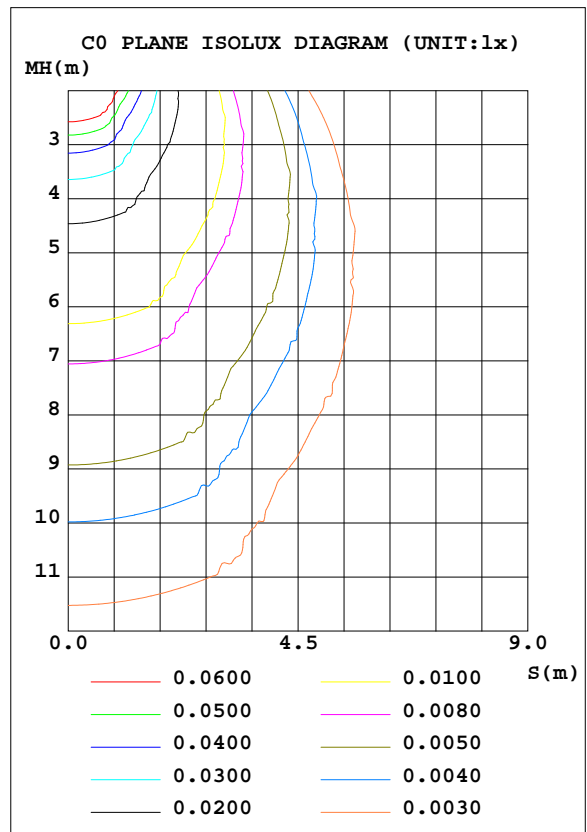
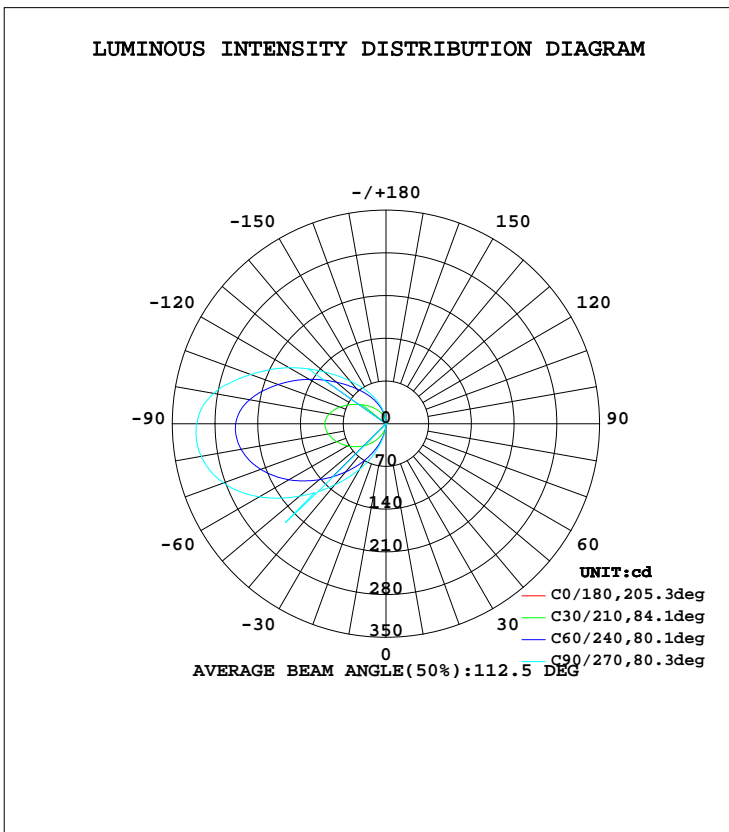


LUMINAIRE PHOTOMETRIC TEST REPORT

Test:U:121.0V I:0.1151A P:12.13W PF:0.8719 Lamp Flux:668.162x1 lm		
NAME:	TYPE:壁灯	WEIGHT:
DIM.:	SPEC.:	SERIAL No.:20171212-02
MFR.: target	SUR.:145*40MM	PROTECTION ANGLE:

DATA OF LAMP		PHOTOMETRIC DATA Eff: 55.06 lm/W			
MODEL	CLTW060410L30D2WH	I _{max} (cd)	311.9	S/MH(C0/180)	1.19
NOMINAL POWER(W)	12	LOR(%)	100.0	S/MH(C90/270)	4.33
RATED VOLTAGE(V)	120	TOTAL FLUX(lm)	668.16	η UP, DN(C0-180)	0.3,0.3
NOMINAL FLUX(lm)	668.162	CIE CLASS	DIFFUSE	η UP, DN(C180-360)	46.1,53.2
LAMPS INSIDE	1	η up(%)	46.4	CIBSE SHR NOM	0.00
TEST VOLTAGE(V)	120.9	η down(%)	53.6	CIBSE SHR MAX	1.00



C Range: 0 - 360DEG
 C Interval: 5.0DEG
 Test Speed: HIGH
 Temperature:25DEG
 Operators:luominxian
 Test Date:2017-12-12

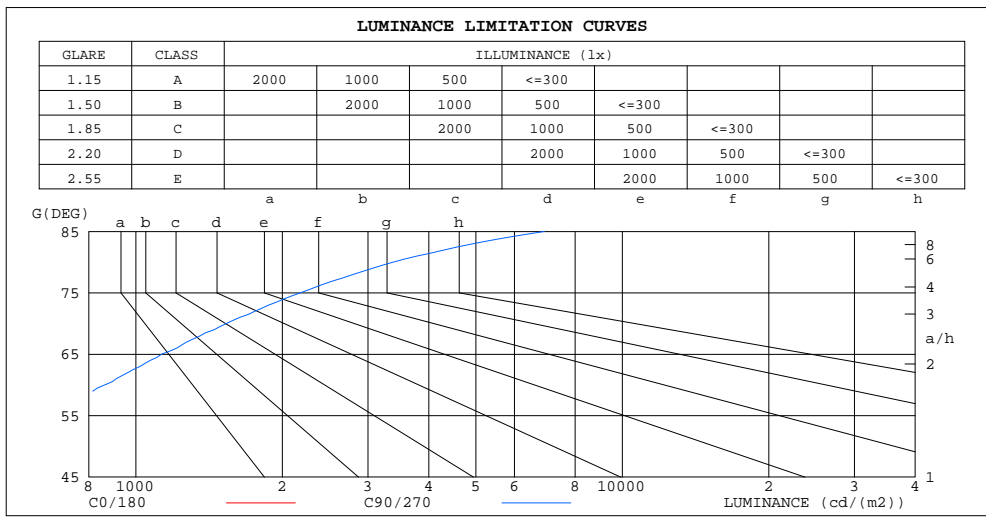
γ Range: 0 - 180DEG
 γ Interval: 0.5DEG
 Test System:EVERFINE GO-2000A_V1 SYSTEM V2.0.272
 Humidity:70%
 Test Distance:8.425m [K=1.0000]
 Remarks:

ZONAL FLUX DIAGRAM
AND LUMINANCE LIMITATION CURVES

ZONAL FLUX DIAGRAM:

γ	C0	C45	C90	C135	C180	C225	C270	C315	γ	Φ zone	Φ total	§lum, lamp
5	0.3984	0.2717	0.1800	0.3075	0.3981	4.664	7.934	5.185	0- 5	0.0326	0.0326	0.00,0.00
10	0.3984	0.2786	0.1886	0.2716	0.3791	12.01	18.08	12.72	5- 10	0.3003	0.3329	0.05,0.05
15	0.3984	0.3010	0.2217	0.2691	0.3666	19.25	31.50	20.16	10- 15	0.8943	1.227	0.18,0.18
20	0.3667	0.3215	0.2850	0.2807	0.3457	28.38	47.65	29.41	15- 20	1.913	3.140	0.47,0.47
25	0.3325	0.3575	0.3532	0.3306	0.3107	38.85	65.71	39.91	20- 25	3.418	6.559	0.98,0.98
30	0.3146	0.3939	0.4435	0.3893	0.2942	50.21	85.48	51.21	25- 30	5.429	11.99	1.79,1.79
35	0.2988	0.4301	0.5562	0.4573	0.2760	62.22	107.2	62.99	30- 35	7.958	19.95	2.99,2.99
40	0.2822	0.4801	0.6607	0.5252	0.2708	74.79	130.9	75.22	35- 40	11.01	30.95	4.63,4.63
45	0.2582	0.5387	0.7876	0.5933	0.2716	87.93	157.0	87.67	40- 45	14.57	45.52	6.81,6.81
50	0.2501	0.6021	0.9278	0.6746	0.2421	101.5	184.6	100.5	45- 50	18.64	64.16	9.6,9.6
55	0.2305	0.6611	1.059	0.7561	0.2200	115.1	212.9	113.3	50- 55	23.00	87.16	13,13
60	0.2168	0.7288	1.199	0.8375	0.1720	128.6	239.3	125.9	55- 60	27.62	114.8	17.2,17.2
65	0.2060	0.7878	1.326	0.9101	0.1522	141.4	263.6	137.8	60- 65	32.20	147.0	22,22
70	0.1992	0.8511	1.457	0.9778	0.1364	152.9	283.3	148.8	65- 70	36.48	183.5	27.5,27.5
75	0.1826	0.8845	1.566	1.032	0.1208	162.7	298.0	158.2	70- 75	40.20	223.7	33.5,33.5
80	0.1668	0.8901	1.631	1.073	0.0996	170.2	307.2	165.4	75- 80	43.14	266.8	39.9,39.9
85	0.1494	0.8956	1.675	1.075	0.0951	174.8	311.7	170.2	80- 85	45.13	311.9	46.7,46.7
90	0.1378	0.8800	1.686	1.077	0.0951	175.7	310.1	171.4	85- 90	45.99	357.9	53.6,53.6
95	0.1266	0.8646	1.689	1.032	0.0951	171.9	302.4	168.5	90- 95	45.54	403.5	60.4,60.4
100	0.1216	0.8238	1.639	1.000	0.0951	162.9	286.7	160.4	95-100	43.57	447.0	66.9,66.9
105	0.1176	0.7694	1.553	0.9506	0.0951	150.3	262.5	148.4	100-105	40.15	487.2	72.9,72.9
110	0.0996	0.6924	1.426	0.8762	0.0951	136.0	236.2	134.5	105-110	35.79	523.0	78.3,78.3
115	0.0996	0.6065	1.281	0.7967	0.0996	121.1	210.0	119.9	110-115	31.11	554.1	82.9,82.9
120	0.0996	0.5295	1.137	0.7198	0.1041	106.1	183.7	105.2	115-120	26.41	580.5	86.9,86.9
125	0.0996	0.4526	0.8872	0.6463	0.1099	91.63	157.4	91.09	120-125	21.84	602.3	90.1,90.1
130	0.0996	0.3890	0.8558	0.5703	0.1224	78.50	132.5	78.11	125-130	17.60	619.9	92.8,92.8
135	0.0996	0.3212	0.7425	0.4981	0.2168	66.96	110.5	66.69	130-135	13.88	633.8	94.9,94.9
140	0.1094	0.2852	0.6158	0.4390	0.0362	56.66	91.52	56.39	135-140	10.74	644.6	96.5,96.5
145	0.1123	0.2126	0.5027	0.3712	0.0362	47.57	75.48	47.30	140-145	8.108	652.7	97.7,97.7
150	0.1128	0.1471	0.3850	0.2895	0.0362	39.22	61.64	38.97	145-150	5.949	658.6	98.6,98.6
155	0.1087	0.1084	0.2988	0.2265	0.0362	31.44	49.11	31.19	150-155	4.173	662.8	99.2,99.2
160	0.0544	0.0679	0.2220	0.1720	0.0362	24.16	37.38	23.87	155-160	2.727	665.5	99.6,99.6
165	0.0453	0.0587	0.1676	0.1481	0.0362	17.27	26.33	17.25	160-165	1.594	667.1	99.8,99.8
170	0.0407	0.0362	0.1266	0.1411	0.0362	9.915	16.64	11.74	165-170	0.7731	667.9	100,100
175	0.0407	0.0362	0.0861	0.1406	0.0362	2.613	8.665	2.323	170-175	0.2600	668.1	100,100
180	0.0362	0.0362	0.0543	0.1358	0.0362	0.0453	0.0498	0.1403	175-180	0.0171	668.2	100,100

DEG LUMINOUS INTENSITY:cd MAX|(Ii - Iavg)/Iavg|(0-135) = 536.4 % UNIT:lm



LUMINANCE cd/(m2)		
G(DEG)	C0/180	C90/270
85	617	6914
80	346	3378
75	254	2176
70	209	1533
65	175	1129
60	156	863
55	145	664
50	140	519
45	131	401

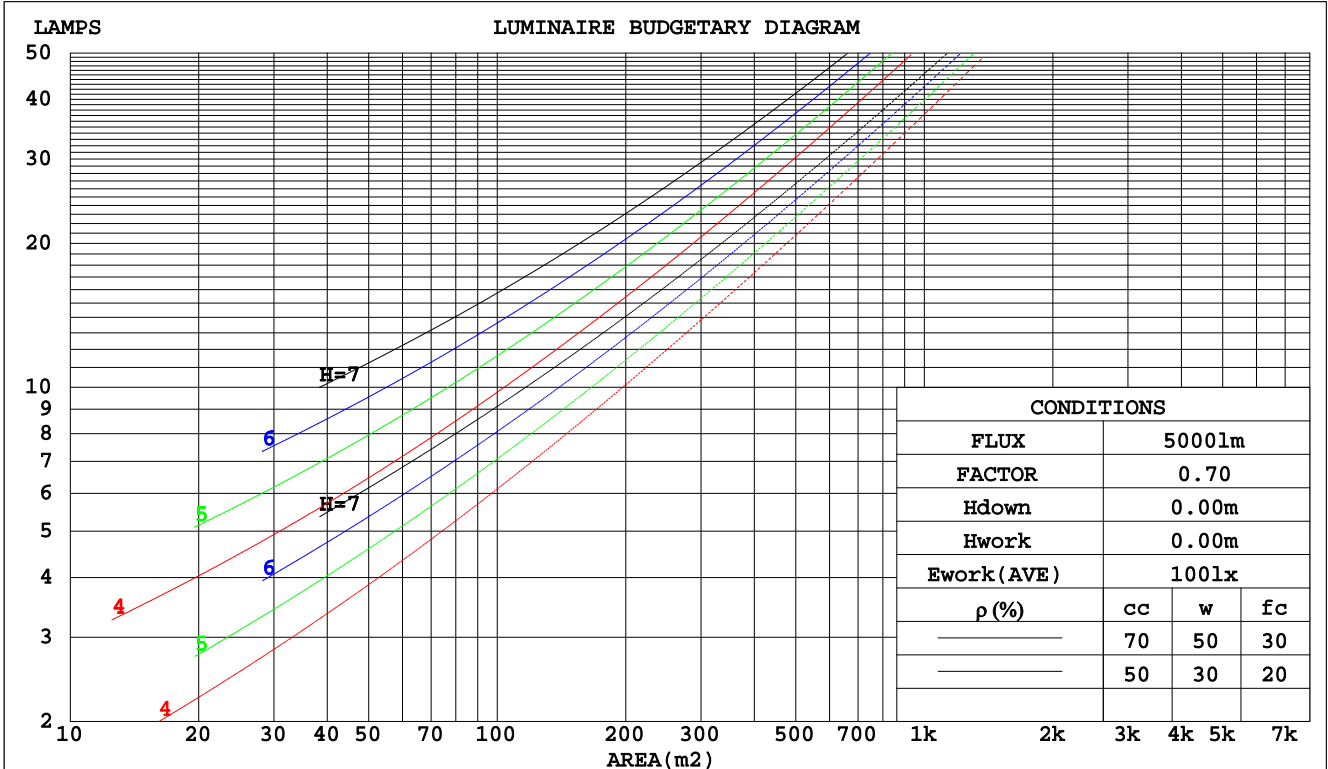
C Range: 0 - 360DEG
C Interval: 5.0DEG
Test Speed: HIGH
Temperature:25DEG
Operators:luominxian
Test Date:2017-12-12

γ Range: 0 - 180DEG
γ Interval: 0.5DEG
Test System:EVERFINE GO-2000A_V1 SYSTEM V2.0.272
Humidity:70%
Test Distance:8.425m [K=1.0000]
Remarks:

CU AND LUMINAIRE BUDGETARY ESTIMATE DIAGRAM

Test:U:121.0V I:0.1151A P:12.13W PF:0.8719 Lamp Flux:668.162x1 lm		
NAME:	TYPE:壁灯	WEIGHT:
DIM.:	SPEC.:	SERIAL No.:20171212-02
MFR.: target	SUR.:145*40MM	PROTECTION ANGLE:

pcc	80%			70%			50%			30%			10%			0
pw	50%	30%	10%	50%	30%	10%	50%	30%	10%	50%	30%	10%	50%	30%	10%	0
pfc	20%			20%			20%			20%			20%			0
RCR	RCR:Room Cavity Ratio						Coefficients of Utilization(CU)									
0.0	1.08	1.08	1.08	1.00	1.00	1.00	.85	.85	.85	.72	.72	.72	.59	.59	.59	.54
1.0	.84	.78	.72	.77	.71	.66	.64	.60	.55	.52	.49	.45	.41	.39	.36	.31
2.0	.70	.61	.53	.64	.56	.49	.52	.46	.41	.42	.37	.33	.32	.29	.25	.20
3.0	.59	.49	.41	.54	.45	.38	.44	.37	.31	.35	.29	.25	.27	.22	.19	.14
4.0	.51	.41	.33	.46	.37	.30	.38	.31	.25	.30	.24	.19	.23	.18	.14	.10
5.0	.44	.34	.27	.41	.31	.25	.33	.26	.20	.26	.20	.16	.20	.15	.11	.08
6.0	.39	.30	.23	.36	.27	.21	.29	.22	.17	.23	.17	.13	.17	.13	.09	.06
7.0	.35	.26	.19	.32	.23	.17	.26	.19	.14	.21	.15	.11	.16	.11	.08	.05
8.0	.31	.23	.16	.29	.21	.15	.24	.17	.12	.19	.13	.09	.14	.10	.07	.04
9.0	.28	.20	.14	.26	.18	.13	.21	.15	.10	.17	.12	.08	.13	.09	.06	.03
10.0	.26	.18	.12	.24	.16	.11	.20	.13	.09	.16	.11	.07	.12	.08	.05	.03



C Range: 0 - 360DEG
 C Interval: 5.0DEG
 Test Speed: HIGH
 Temperature:25DEG
 Operators:luominxian
 Test Date:2017-12-12

γ Range: 0 - 180DEG
 γ Interval: 0.5DEG
 Test System:EVERFINE GO-2000A_V1 SYSTEM V2.0.272
 Humidity:70%
 Test Distance:8.425m [K=1.0000]
 Remarks:

WEC AND CCEC

Test:U:121.0V I:0.1151A P:12.13W PF:0.8719 Lamp Flux:668.162x1 lm		
NAME:	TYPE:壁灯	WEIGHT:
DIM.:	SPEC.:	SERIAL No.:20171212-02
MFR.: target	SUR.:145*40MM	PROTECTION ANGLE:

ρcc	80%			70%			50%			30%			10%			0
ρw	50%	30%	10%	50%	30%	10%	50%	30%	10%	50%	30%	10%	50%	30%	10%	0
ρfc	20%			20%			20%			20%			20%			0
RCR	RCR:Room Cavity Ratio						Wall Exitance Coefficients(WEC)									
0.0																
1.0	.474	.270	.085	.453	.258	.082	.412	.236	.076	.375	.216	.069	.341	.198	.064	
2.0	.383	.210	.064	.364	.200	.062	.327	.182	.056	.293	.164	.051	.261	.148	.047	
3.0	.328	.175	.052	.310	.166	.050	.276	.150	.045	.245	.134	.041	.216	.120	.037	
4.0	.288	.150	.044	.271	.142	.042	.240	.128	.038	.212	.114	.034	.185	.100	.031	
5.0	.257	.131	.038	.242	.124	.036	.213	.111	.033	.187	.099	.029	.162	.087	.026	
6.0	.232	.116	.033	.218	.110	.032	.192	.098	.029	.168	.087	.026	.145	.076	.023	
7.0	.212	.105	.030	.199	.099	.028	.175	.088	.025	.152	.078	.023	.131	.068	.020	
8.0	.195	.095	.027	.183	.090	.025	.161	.080	.023	.139	.071	.020	.120	.061	.018	
9.0	.180	.087	.024	.169	.083	.023	.148	.073	.021	.129	.065	.018	.110	.056	.016	
10.0	.168	.080	.022	.158	.076	.021	.138	.068	.019	.120	.059	.017	.102	.051	.015	

ρcc	80%			70%			50%			30%			10%			0
ρw	50%	30%	10%	50%	30%	10%	50%	30%	10%	50%	30%	10%	50%	30%	10%	0
ρfc	20%			20%			20%			20%			20%			0
RCR	RCR:Room Cavity Ratio						Ceiling Cavity Exitance Coefficients(CCEC)									
0.0	.544	.544	.544	.465	.465	.465	.317	.317	.317	.182	.182	.182	.058	.058	.058	
1.0	.548	.511	.478	.469	.439	.411	.321	.302	.285	.185	.175	.165	.059	.056	.054	
2.0	.544	.491	.446	.466	.422	.386	.319	.292	.269	.184	.170	.158	.059	.055	.051	
3.0	.537	.476	.427	.460	.410	.370	.316	.285	.260	.182	.166	.153	.059	.054	.050	
4.0	.529	.464	.415	.454	.401	.361	.312	.280	.254	.181	.164	.150	.058	.053	.049	
5.0	.521	.456	.407	.448	.394	.354	.308	.275	.250	.179	.162	.148	.058	.053	.049	
6.0	.513	.448	.401	.441	.388	.350	.304	.272	.247	.177	.160	.147	.057	.052	.049	
7.0	.506	.442	.397	.435	.383	.346	.301	.269	.245	.175	.158	.146	.056	.052	.048	
8.0	.499	.437	.394	.430	.379	.344	.297	.266	.244	.173	.157	.145	.056	.051	.048	
9.0	.493	.432	.392	.425	.375	.342	.294	.264	.243	.171	.156	.145	.056	.051	.048	
10.0	.487	.429	.390	.420	.372	.340	.291	.262	.242	.170	.155	.144	.055	.051	.048	

C Range: 0 - 360DEG
 C Interval: 5.0DEG
 Test Speed: HIGH
 Temperature:25DEG
 Operators:luominxian
 Test Date:2017-12-12

γ Range: 0 - 180DEG
 γ Interval: 0.5DEG
 Test System:EVERFINE GO-2000A_V1 SYSTEM V2.0.272
 Humidity:70%
 Test Distance:8.425m [K=1.0000]
 Remarks:

Uncorrected UGR Table

Test:U:121.0V I:0.1151A P:12.13W PF:0.8719 Lamp Flux:668.162x1 lm											
NAME:		TYPE:壁灯				WEIGHT:					
DIM.:		SPEC.:				SERIAL No.:20171212-02					
MFR.: target		SUR.:145*40MM				PROTECTION ANGLE:					
ceiling/cavity		0.7	0.7	0.5	0.5	0.3	0.7	0.7	0.5	0.5	0.3
walls		0.5	0.3	0.5	0.3	0.3	0.5	0.3	0.5	0.3	0.3
working plane		0.2	0.2	0.2	0.2	0.2	0.2	0.2	0.2	0.2	0.2
Room dimensions		Viewed crosswise					Viewed endwise				
x = 2H y = 2H		-13.0	-11.8	-12.1	-10.9	-9.8	-5.5	-4.3	-4.7	-3.4	-2.3
	3H	-10.9	-9.8	-10.1	-8.9	-7.8	-1.1	0.0	-0.2	0.9	2.1
	4H	-9.9	-8.8	-9.0	-7.9	-6.7	1.4	2.4	2.2	3.3	4.5
	6H	-8.8	-7.8	-7.9	-6.9	-5.7	3.9	4.9	4.8	5.8	7.0
	8H	-8.3	-7.3	-7.4	-6.4	-5.2	5.3	6.2	6.2	7.2	8.4
	12H	-7.6	-6.7	-6.7	-5.8	-4.6	6.8	7.7	7.7	8.6	9.8
	4H 2H	-9.3	-8.2	-8.4	-7.3	-6.1	-5.1	-4.0	-4.2	-3.1	-1.9
	3H	-7.1	-6.2	-6.2	-5.3	-4.1	-0.4	0.5	0.5	1.5	2.7
	4H	-6.1	-5.2	-5.2	-4.3	-3.1	2.3	3.1	3.2	4.0	5.3
	6H	-5.1	-4.3	-4.2	-3.4	-2.1	5.1	5.8	6.0	6.8	8.0
	8H	-4.6	-3.9	-3.7	-2.9	-1.7	6.6	7.3	7.5	8.3	9.5
	12H	-4.1	-3.4	-3.1	-2.5	-1.2	8.2	8.9	9.2	9.9	11.1
	8H 4H	-3.0	-2.3	-2.1	-1.3	-0.1	2.5	3.2	3.4	4.2	5.5
	6H	-1.7	-1.1	-0.7	-0.1	1.2	5.6	6.2	6.6	7.2	8.5
	8H	-1.1	-0.5	-0.1	0.5	1.8	7.4	7.9	8.4	8.9	10.2
	12H	-0.5	-0.0	0.5	1.0	2.3	9.3	9.8	10.3	10.8	12.1
	12H 4H	-1.9	-1.2	-1.0	-0.3	1.0	2.5	3.1	3.4	4.1	5.4
	6H	-0.2	0.3	0.7	1.3	2.6	5.7	6.3	6.7	7.3	8.6
	8H	0.6	1.1	1.6	2.1	3.4	7.6	8.1	8.5	9.1	10.4
Variations with the observer position at spacings:											
S = 1.0H		+ 0.1 / - 0.1					+ 0.1 / - 0.2				
1.5H		+ 0.1 / - 0.1					+ 0.3 / - 0.3				
2.0H		+ 0.3 / - 0.2					+ 0.3 / - 0.4				

CIE Pub.117 Corrected 668.2 lm Total Lamp Luminous Flux.(8log(F/F0) = -1.4)

C Range: 0 - 360DEG
 C Interval: 5.0DEG
 Test Speed: HIGH
 Temperature:25DEG
 Operators:luominxian
 Test Date:2017-12-12

γ Range: 0 - 180DEG
 γ Interval: 0.5DEG
 Test System:EVERFINE GO-2000A_V1 SYSTEM V2.0.272
 Humidity:70%
 Test Distance:8.425m [K=1.0000]
 Remarks:

UTILIZATION FACTORS TABLE

Test:U:121.0V I:0.1151A P:12.13W PF:0.8719 Lamp Flux:668.162x1 lm		
NAME:	TYPE:壁灯	WEIGHT:
DIM.:	SPEC.:	SERIAL No.:20171212-02
MFR.: target	SUR.:145*40MM	PROTECTION ANGLE:

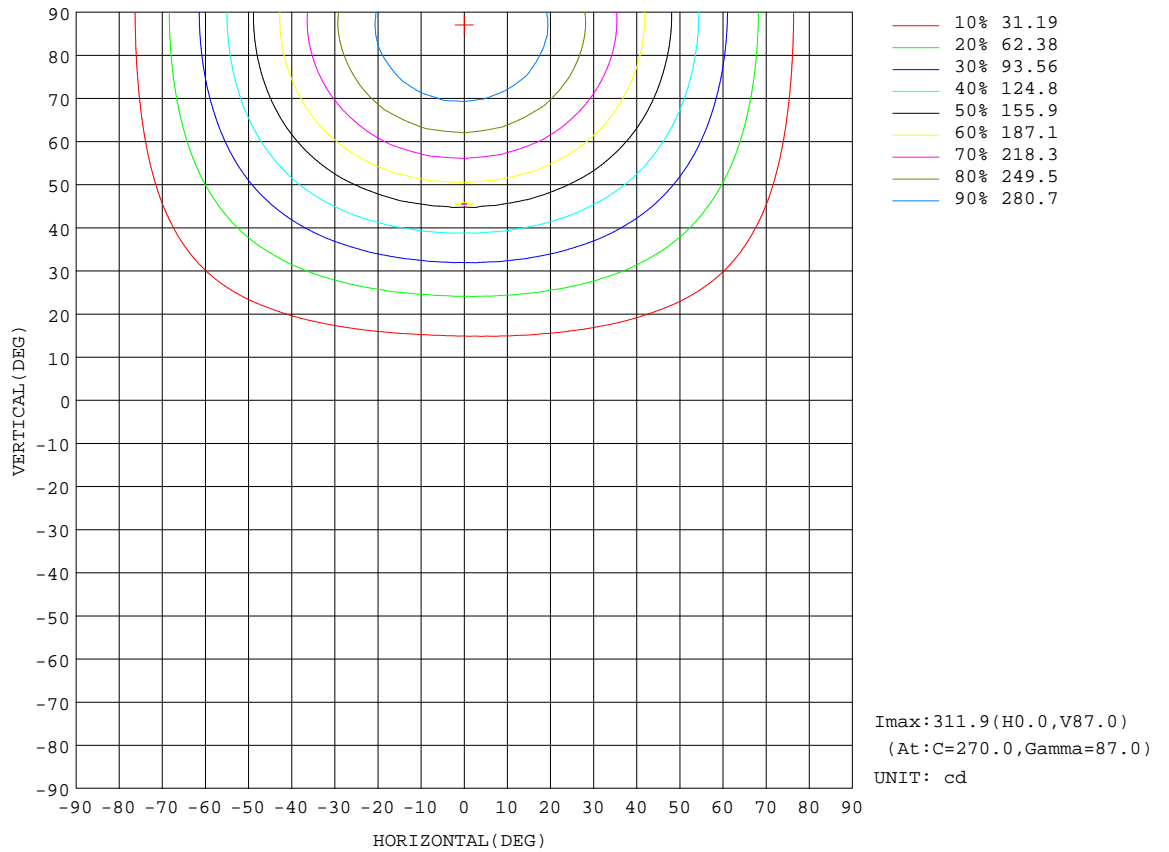
REFLECTANCE										
Ceiling	0.8	0.8	0.8	0.7	0.7	0.7	0.5	0.5	0.5	0
Walls	0.7	0.5	0.3	0.7	0.5	0.3	0.7	0.5	0.3	0
Working plane	0.2	0.2	0.2	0.2	0.2	0.2	0.2	0.2	0.2	0
ROOM INDEX	UTILIZATION FACTORS(PERCENT) $k(RI) \times RCR = 5$									
k = 0.60	33	19	12	31	19	11	28	17	10	3
0.80	41	26	17	38	25	16	34	22	15	5
1.00	48	32	22	45	31	21	39	29	19	8
1.25	55	39	29	51	37	27	44	32	24	11
1.50	60	45	34	56	42	32	48	37	28	13
2.00	68	54	43	63	50	40	54	43	35	18
2.50	73	60	49	68	56	46	58	48	40	21
3.00	78	65	55	72	61	52	61	52	45	24
4.00	84	73	63	77	67	59	65	58	51	28
5.00	87	78	69	81	72	65	68	62	56	31
ROOM INDEX	UF(total)									Direct
According to DIN EN 13032-2 2004			Suspended				SHRNOM = 1.25			

C Range: 0 - 360DEG
 C Interval: 5.0DEG
 Test Speed: HIGH
 Temperature:25DEG
 Operators:luominxian
 Test Date:2017-12-12

γ Range: 0 - 180DEG
 γ Interval: 0.5DEG
 Test System:EVERFINE GO-2000A_V1 SYSTEM V2.0.272
 Humidity:70%
 Test Distance:8.425m [K=1.0000]
 Remarks:

ISOCANDELA DIAGRAM

Test:U:121.0V I:0.1151A P:12.13W PF:0.8719 Lamp Flux:668.162x1 lm		
NAME:	TYPE:壁灯	WEIGHT:
DIM.:	SPEC.:	SERIAL No.:20171212-02
MFR.: target	SUR.:145*40MM	PROTECTION ANGLE:

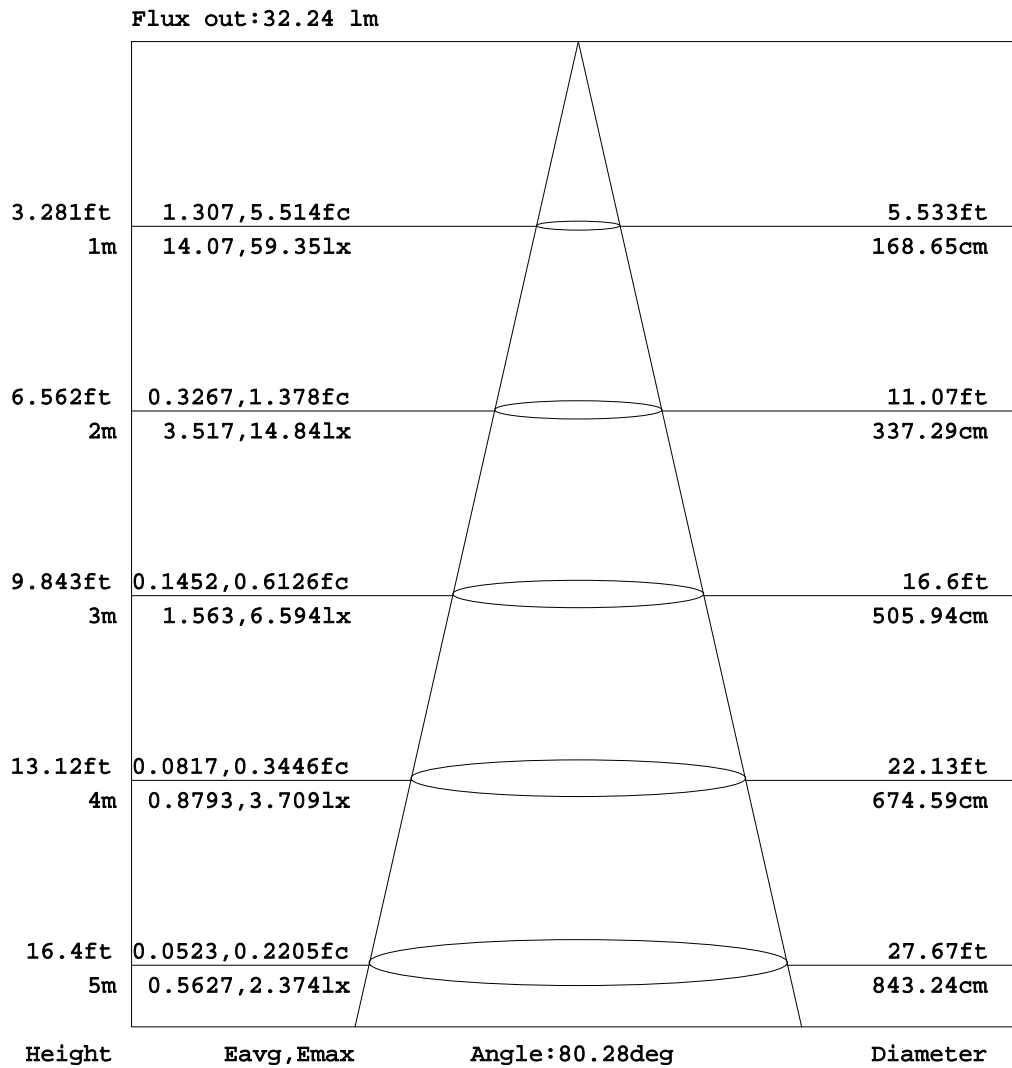


C Range: 0 - 360DEG
 C Interval: 5.0DEG
 Test Speed: HIGH
 Temperature: 25DEG
 Operators: luominxian
 Test Date: 2017-12-12

γ Range: 0 - 180DEG
 γ Interval: 0.5DEG
 Test System: EVERFINE GO-2000A_V1 SYSTEM V2.0.272
 Humidity: 70%
 Test Distance: 8.425m [K=1.0000]
 Remarks:

AAI Figure

Test:U:121.0V I:0.1151A P:12.13W PF:0.8719 Lamp Flux:668.162x1 lm		
NAME:	TYPE:壁灯	WEIGHT:
DIM.:	SPEC.:	SERIAL No.:20171212-02
MFR.: target	SUR.:145*40MM	PROTECTION ANGLE:



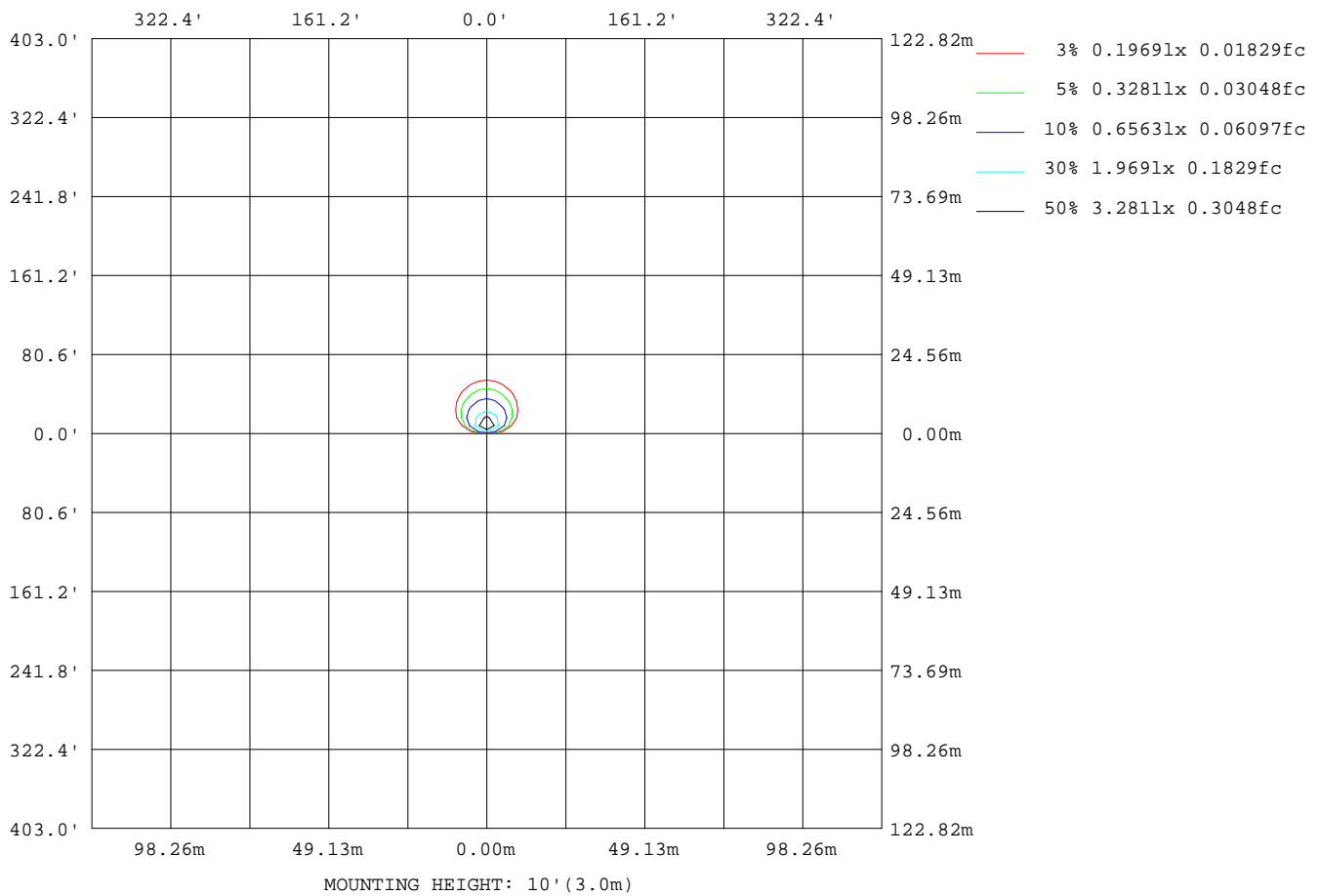
Note:The Curves indicate the illuminated area and the average illumination when the luminaire is at different distance.

C Range: 0 - 360DEG
 C Interval: 5.0DEG
 Test Speed: HIGH
 Temperature:25DEG
 Operators:luominxian
 Test Date:2017-12-12

γ Range: 0 - 180DEG
 γ Interval: 0.5DEG
 Test System:EVERFINE GO-2000A_V1 SYSTEM V2.0.272
 Humidity:70%
 Test Distance:8.425m [K=1.0000]
 Remarks:

ISOLUX DIAGRAM

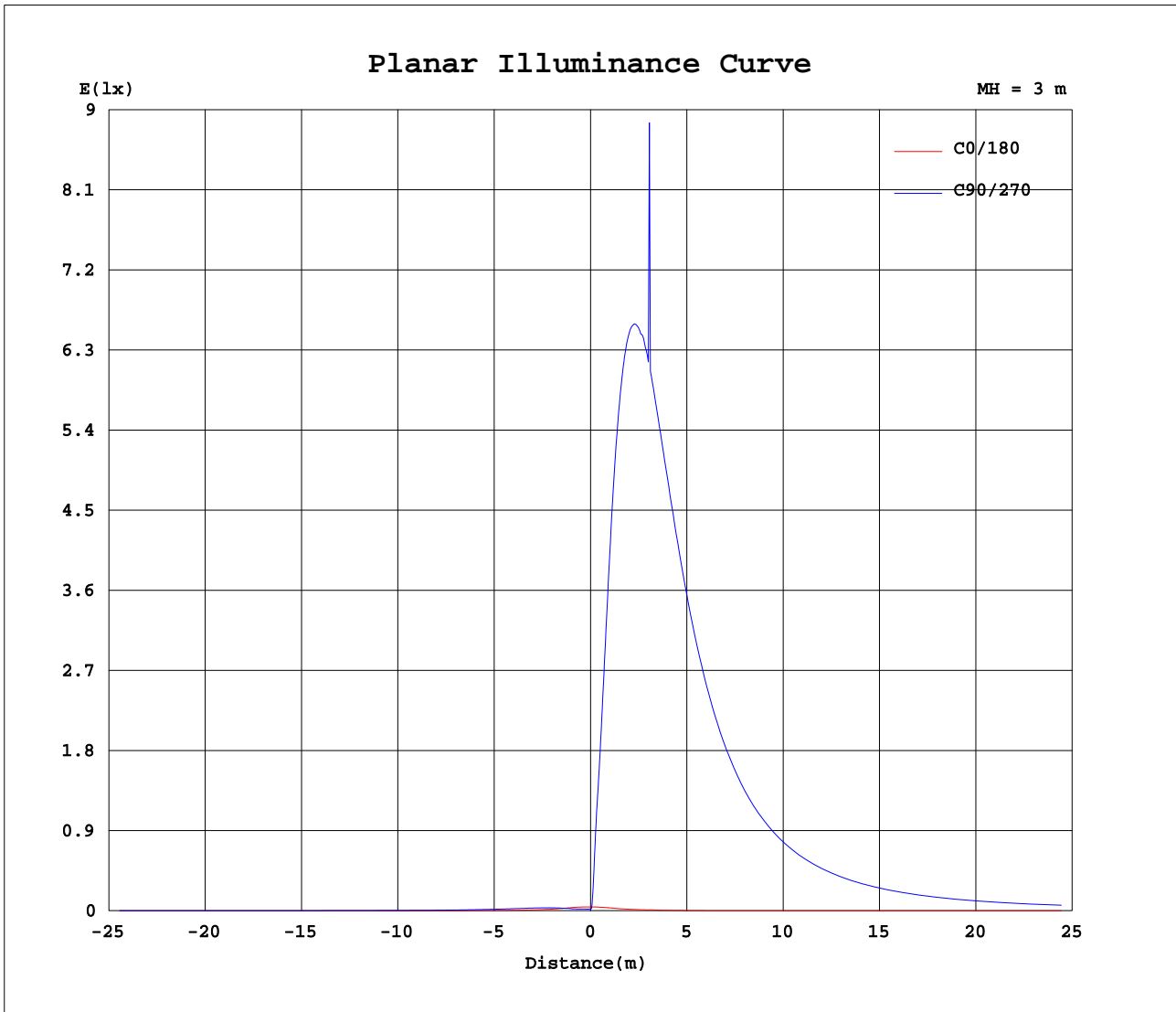
Test:U:121.0V I:0.1151A P:12.13W PF:0.8719 Lamp Flux:668.162x1 lm		
NAME:	TYPE:壁灯	WEIGHT:
DIM.:	SPEC.:	SERIAL No.:20171212-02
MFR.: target	SUR.:145*40MM	PROTECTION ANGLE:



C Range: 0 - 360DEG
 C Interval: 5.0DEG
 Test Speed: HIGH
 Temperature:25DEG
 Operators:luominxian
 Test Date:2017-12-12

γ Range: 0 - 180DEG
 γ Interval: 0.5DEG
 Test System:EVERFINE GO-2000A_V1 SYSTEM V2.0.272
 Humidity:70%
 Test Distance:8.425m [K=1.0000]
 Remarks:

Planar Illuminance Curve



C Range: 0 - 360DEG
 C Interval: 5.0DEG
 Test Speed: HIGH
 Temperature: 25DEG
 Operators: luominxian
 Test Date: 2017-12-12

γ Range: 0 - 180DEG
 γ Interval: 0.5DEG
 Test System: EVERFINE GO-2000A_V1 SYSTEM V2.0.272
 Humidity: 70%
 Test Distance: 8.425m [K=1.0000]
 Remarks:

LUMINOUS DISTRIBUTION INTENSITY DATA

Test:U:121.0V I:0.1151A P:12.13W PF:0.8719 Lamp Flux:668.162x1 lm		
NAME:	TYPE:壁灯	WEIGHT:
DIM.:	SPEC.:	SERIAL No.:20171212-02
MFR.: target	SUR.:145*40MM	PROTECTION ANGLE:

Table--1

UNIT: cd

C(DEG) γ (DEG)	0	5	10	15	20	25	30	35	40	45	50	55	60	65	70	75	80	85	90
0	0.40	0.40	0.43	0.38	0.39	0.35	0.35	0.32	0.30	0.26	0.24	0.21	0.20	0.18	0.17	0.16	0.17	0.16	0.18
5	0.40	0.38	0.42	0.36	0.39	0.35	0.35	0.32	0.30	0.27	0.24	0.22	0.20	0.19	0.17	0.18	0.17	0.17	0.18
10	0.40	0.38	0.41	0.37	0.38	0.35	0.34	0.32	0.30	0.28	0.24	0.24	0.20	0.22	0.17	0.20	0.17	0.20	0.19
15	0.40	0.36	0.39	0.36	0.38	0.35	0.34	0.33	0.30	0.30	0.24	0.27	0.22	0.26	0.21	0.25	0.21	0.25	0.22
20	0.37	0.33	0.37	0.35	0.37	0.35	0.34	0.34	0.31	0.32	0.29	0.31	0.27	0.32	0.26	0.31	0.28	0.32	0.29
25	0.33	0.30	0.36	0.31	0.36	0.35	0.34	0.36	0.31	0.36	0.31	0.35	0.32	0.37	0.33	0.38	0.35	0.40	0.35
30	0.31	0.29	0.34	0.30	0.35	0.35	0.34	0.38	0.37	0.39	0.36	0.42	0.38	0.44	0.42	0.47	0.43	0.48	0.44
35	0.30	0.27	0.32	0.29	0.34	0.36	0.35	0.40	0.38	0.43	0.42	0.48	0.45	0.53	0.51	0.56	0.53	0.59	0.56
40	0.28	0.24	0.31	0.29	0.34	0.36	0.37	0.42	0.42	0.48	0.47	0.54	0.54	0.62	0.59	0.66	0.64	0.70	0.66
45	0.26	0.24	0.29	0.29	0.33	0.38	0.38	0.45	0.45	0.54	0.54	0.62	0.64	0.71	0.71	0.78	0.76	0.81	0.79
50	0.25	0.24	0.29	0.29	0.33	0.39	0.42	0.49	0.52	0.60	0.61	0.71	0.72	0.81	0.81	0.89	0.88	0.95	0.93
55	0.23	0.24	0.28	0.29	0.33	0.41	0.44	0.53	0.58	0.66	0.69	0.79	0.82	0.92	0.94	1.02	1.01	1.08	1.06
60	0.22	0.22	0.27	0.29	0.33	0.42	0.45	0.57	0.61	0.73	0.77	0.88	0.93	1.04	1.05	1.15	1.15	1.22	1.20
65	0.21	0.20	0.26	0.29	0.33	0.44	0.48	0.61	0.66	0.79	0.87	0.98	1.01	1.14	1.17	1.26	1.28	1.35	1.33
70	0.20	0.18	0.26	0.29	0.34	0.44	0.51	0.64	0.74	0.85	0.91	1.05	1.11	1.24	1.28	1.39	1.40	1.47	1.46
75	0.18	0.16	0.25	0.29	0.36	0.44	0.53	0.66	0.75	0.88	0.97	1.12	1.19	1.33	1.38	1.48	1.51	1.57	1.57
80	0.17	0.15	0.24	0.27	0.37	0.44	0.54	0.66	0.77	0.89	1.02	1.16	1.24	1.38	1.44	1.55	1.58	1.66	1.63
85	0.15	0.15	0.23	0.24	0.36	0.43	0.54	0.66	0.79	0.90	1.02	1.17	1.27	1.39	1.48	1.57	1.62	1.67	1.68
90	0.14	0.14	0.21	0.23	0.35	0.41	0.54	0.65	0.79	0.88	1.02	1.15	1.28	1.38	1.48	1.57	1.61	1.67	1.69
95	0.13	0.14	0.20	0.22	0.34	0.38	0.54	0.60	0.77	0.86	1.02	1.11	1.28	1.36	1.47	1.53	1.61	1.64	1.69
100	0.12	0.14	0.19	0.22	0.32	0.37	0.51	0.58	0.74	0.82	0.99	1.07	1.22	1.31	1.44	1.48	1.58	1.59	1.64
105	0.12	0.09	0.17	0.19	0.30	0.34	0.48	0.53	0.69	0.77	0.93	1.00	1.15	1.22	1.35	1.40	1.49	1.51	1.55
110	0.10	0.09	0.16	0.17	0.27	0.30	0.43	0.49	0.63	0.69	0.84	0.91	1.05	1.12	1.24	1.28	1.37	1.38	1.43
115	0.10	0.08	0.15	0.15	0.25	0.29	0.39	0.43	0.57	0.61	0.75	0.81	0.94	1.00	1.10	1.14	1.23	1.22	1.28
120	0.10	0.08	0.14	0.14	0.22	0.24	0.34	0.36	0.49	0.53	0.66	0.70	0.83	0.87	0.97	1.00	1.08	1.08	1.14
125	0.10	0.08	0.13	0.14	0.20	0.21	0.31	0.32	0.43	0.45	0.57	0.60	0.72	0.75	0.85	0.86	0.94	0.93	0.99
130	0.10	0.08	0.12	0.13	0.19	0.18	0.27	0.27	0.38	0.39	0.49	0.50	0.62	0.65	0.72	0.73	0.81	0.80	0.86
135	0.10	0.08	0.12	0.12	0.17	0.15	0.24	0.22	0.33	0.32	0.42	0.49	0.56	0.58	0.64	0.67	0.69	0.71	0.74
140	0.11	0.08	0.12	0.10	0.15	0.13	0.20	0.20	0.28	0.29	0.35	0.36	0.44	0.44	0.52	0.51	0.57	0.56	0.62
145	0.11	0.07	0.11	0.08	0.13	0.10	0.18	0.14	0.23	0.21	0.29	0.29	0.35	0.35	0.41	0.41	0.48	0.44	0.50
150	0.11	0.04	0.09	0.07	0.11	0.07	0.13	0.11	0.18	0.15	0.22	0.20	0.26	0.25	0.33	0.30	0.36	0.33	0.39
155	0.11	0.03	0.07	0.04	0.10	0.07	0.11	0.08	0.14	0.11	0.16	0.15	0.21	0.19	0.25	0.22	0.29	0.24	0.30
160	0.05	0.03	0.06	0.03	0.07	0.04	0.09	0.08	0.10	0.07	0.13	0.09	0.16	0.14	0.19	0.15	0.21	0.17	0.22
165	0.05	0.03	0.05	0.03	0.06	0.04	0.07	0.04	0.08	0.06	0.09	0.08	0.11	0.08	0.14	0.11	0.16	0.13	0.17
170	0.04	0.03	0.05	0.03	0.05	0.04	0.07	0.04	0.07	0.04	0.07	0.04	0.10	0.07	0.11	0.07	0.12	0.08	0.13
175	0.04	0.03	0.05	0.03	0.05	0.04	0.06	0.04	0.06	0.04	0.06	0.04	0.07	0.04	0.07	0.05	0.09	0.05	0.09
180	0.04	0.04	0.04	0.04	0.04	0.04	0.04	0.04	0.04	0.04	0.04	0.04	0.04	0.04	0.04	0.05	0.05	0.05	0.05

C Range: 0 - 360DEG
 C Interval: 5.0DEG
 Test Speed: HIGH
 Temperature:25DEG
 Operators:luominxian
 Test Date:2017-12-12

γ Range: 0 - 180DEG
 γ Interval: 0.5DEG
 Test System:EVERFINE GO-2000A_V1 SYSTEM V2.0.272
 Humidity:70%
 Test Distance:8.425m [K=1.0000]
 Remarks:

LUMINOUS DISTRIBUTION INTENSITY DATA

Test:U:121.0V I:0.1151A P:12.13W PF:0.8719 Lamp Flux:668.162x1 lm		
NAME:	TYPE:壁灯	WEIGHT:
DIM.:	SPEC.:	SERIAL No.:20171212-02
MFR.: target	SUR.:145*40MM	PROTECTION ANGLE:

Table--2

UNIT: cd

C(DEG) γ (DEG)	95	100	105	110	115	120	125	130	135	140	145	150	155	160	165	170	175	180	185
0	0.19	0.24	0.22	0.29	0.28	0.36	0.35	0.43	0.41	0.49	0.46	0.52	0.49	0.53	0.49	0.51	0.46	0.40	0.40
5	0.20	0.21	0.22	0.24	0.24	0.29	0.26	0.34	0.31	0.39	0.37	0.43	0.42	0.47	0.43	0.48	0.44	0.40	0.42
10	0.21	0.21	0.22	0.22	0.24	0.26	0.25	0.29	0.27	0.33	0.30	0.38	0.36	0.42	0.39	0.45	0.44	0.38	0.43
15	0.30	0.22	0.26	0.23	0.26	0.25	0.25	0.27	0.27	0.30	0.28	0.34	0.30	0.38	0.36	0.42	0.40	0.37	0.69
20	0.33	0.29	0.33	0.29	0.33	0.28	0.30	0.27	0.28	0.29	0.28	0.31	0.30	0.35	0.33	0.40	0.39	0.35	1.24
25	0.41	0.36	0.41	0.35	0.40	0.36	0.37	0.30	0.33	0.30	0.29	0.29	0.30	0.33	0.30	0.37	0.37	0.31	1.85
30	0.49	0.45	0.50	0.45	0.48	0.42	0.44	0.37	0.39	0.32	0.34	0.29	0.30	0.31	0.30	0.35	0.37	0.29	2.51
35	0.60	0.57	0.59	0.53	0.57	0.50	0.52	0.45	0.46	0.37	0.38	0.30	0.30	0.29	0.30	0.33	0.32	0.28	3.28
40	0.72	0.67	0.71	0.65	0.67	0.60	0.61	0.52	0.53	0.44	0.43	0.35	0.33	0.30	0.30	0.32	0.31	0.27	4.02
45	0.84	0.79	0.82	0.76	0.78	0.70	0.69	0.61	0.59	0.51	0.48	0.38	0.36	0.30	0.30	0.30	0.29	0.27	4.65
50	0.97	0.93	0.95	0.88	0.88	0.80	0.78	0.70	0.67	0.58	0.54	0.43	0.39	0.30	0.30	0.29	0.29	0.24	5.10
55	1.10	1.06	1.08	1.01	1.01	0.92	0.89	0.79	0.76	0.65	0.59	0.47	0.43	0.30	0.30	0.29	0.29	0.22	5.27
60	1.25	1.20	1.20	1.14	1.13	1.03	0.99	0.88	0.84	0.71	0.66	0.51	0.46	0.34	0.31	0.28	0.29	0.17	5.35
65	1.38	1.33	1.34	1.26	1.24	1.14	1.09	0.96	0.91	0.78	0.70	0.57	0.50	0.37	0.31	0.28	0.29	0.15	5.38
70	1.50	1.45	1.45	1.38	1.34	1.23	1.18	1.05	0.98	0.83	0.76	0.59	0.53	0.38	0.31	0.28	0.29	0.14	5.42
75	1.60	1.56	1.56	1.46	1.44	1.32	1.25	1.11	1.03	0.88	0.79	0.64	0.53	0.39	0.31	0.28	0.29	0.12	5.48
80	1.68	1.62	1.63	1.54	1.50	1.38	1.30	1.16	1.07	0.91	0.81	0.66	0.53	0.43	0.31	0.28	0.29	0.10	5.55
85	1.72	1.67	1.65	1.58	1.52	1.42	1.31	1.18	1.08	0.93	0.81	0.66	0.53	0.44	0.31	0.28	0.29	0.10	5.62
90	1.71	1.69	1.65	1.60	1.52	1.43	1.30	1.19	1.08	0.94	0.80	0.66	0.52	0.44	0.31	0.28	0.29	0.10	5.74
95	1.67	1.68	1.61	1.59	1.49	1.42	1.28	1.19	1.03	0.94	0.79	0.66	0.51	0.44	0.30	0.28	0.29	0.10	5.96
100	1.62	1.64	1.56	1.53	1.44	1.38	1.24	1.16	1.00	0.91	0.74	0.66	0.51	0.43	0.28	0.27	0.29	0.10	6.04
105	1.53	1.54	1.47	1.46	1.35	1.30	1.16	1.10	0.95	0.87	0.71	0.62	0.46	0.42	0.28	0.26	0.29	0.10	6.02
110	1.40	1.43	1.37	1.34	1.24	1.20	1.09	1.02	0.88	0.81	0.66	0.58	0.44	0.39	0.27	0.25	0.29	0.10	5.93
115	1.25	1.29	1.22	1.21	1.13	1.09	0.97	0.94	0.80	0.74	0.60	0.55	0.41	0.37	0.26	0.25	0.29	0.10	5.84
120	1.11	1.15	1.08	1.09	1.01	0.98	0.87	0.85	0.72	0.67	0.57	0.50	0.38	0.35	0.25	0.25	0.29	0.10	5.81
125	0.96	1.01	0.95	0.96	0.88	0.87	0.78	0.75	0.65	0.62	0.52	0.46	0.36	0.33	0.25	0.25	0.30	0.11	5.86
130	0.82	0.87	0.81	0.83	0.76	0.77	0.68	0.67	0.57	0.55	0.45	0.43	0.32	0.31	0.25	0.25	0.31	0.12	5.91
135	0.75	0.75	0.70	0.72	0.66	0.67	0.60	0.59	0.50	0.50	0.40	0.39	0.30	0.30	0.25	0.27	0.32	0.22	5.84
140	0.57	0.64	0.58	0.62	0.57	0.58	0.52	0.54	0.44	0.45	0.36	0.36	0.29	0.30	0.25	0.28	0.33	0.04	5.21
145	0.47	0.53	0.48	0.51	0.45	0.49	0.43	0.44	0.37	0.38	0.31	0.32	0.27	0.28	0.25	0.28	0.33	0.04	4.50
150	0.37	0.41	0.38	0.41	0.36	0.39	0.33	0.36	0.29	0.32	0.25	0.27	0.23	0.25	0.25	0.28	0.33	0.04	3.70
155	0.27	0.33	0.29	0.33	0.28	0.31	0.27	0.29	0.23	0.27	0.22	0.24	0.21	0.24	0.25	0.28	0.33	0.04	2.81
160	0.19	0.24	0.21	0.24	0.22	0.24	0.21	0.24	0.17	0.22	0.17	0.21	0.21	0.23	0.25	0.28	0.33	0.04	1.81
165	0.13	0.18	0.14	0.19	0.14	0.19	0.14	0.19	0.15	0.19	0.16	0.20	0.21	0.23	0.27	0.28	0.33	0.04	1.00
170	0.08	0.14	0.09	0.14	0.09	0.15	0.10	0.16	0.14	0.17	0.16	0.19	0.22	0.23	0.27	0.31	0.33	0.04	0.51
175	0.06	0.10	0.07	0.11	0.09	0.12	0.10	0.14	0.14	0.17	0.16	0.19	0.22	0.23	0.29	0.30	0.33	0.04	0.15
180	0.05	0.07	0.07	0.08	0.09	0.10	0.10	0.12	0.14	0.15	0.16	0.19	0.23	0.27	0.30	0.30	0.33	0.04	0.04

C Range: 0 - 360DEG
 C Interval: 5.0DEG
 Test Speed: HIGH
 Temperature:25DEG
 Operators:luominxian
 Test Date:2017-12-12

γ Range: 0 - 180DEG
 γ Interval: 0.5DEG
 Test System:EVERFINE GO-2000A_V1 SYSTEM V2.0.272
 Humidity:70%
 Test Distance:8.425m [K=1.0000]
 Remarks:

LUMINOUS DISTRIBUTION INTENSITY DATA

Test:U:121.0V I:0.1151A P:12.13W PF:0.8719 Lamp Flux:668.162x1 lm		
NAME:	TYPE:壁灯	WEIGHT:
DIM.:	SPEC.:	SERIAL No.:20171212-02
MFR.: target	SUR.:145*40MM	PROTECTION ANGLE:

Table--3

UNIT: cd

C(DEG) γ (DEG)	190	195	200	205	210	215	220	225	230	235	240	245	250	255	260	265	270	275	280
0	0.43	0.38	0.39	0.35	0.35	0.32	0.30	0.26	0.24	0.21	0.20	0.18	0.17	0.16	0.17	0.16	0.18	0.19	0.24
5	0.47	0.70	1.18	1.83	2.39	3.16	3.82	4.66	5.20	5.97	6.37	6.95	7.16	7.62	7.71	8.01	7.93	8.06	7.85
10	1.28	2.68	4.48	6.40	7.98	9.65	10.8	12.0	13.0	14.1	14.9	15.9	16.6	17.3	17.7	18.1	18.1	18.2	17.8
15	2.67	5.60	8.24	10.7	12.6	14.8	16.9	19.3	21.3	23.5	25.3	27.2	28.6	29.9	30.7	31.5	31.5	31.6	30.9
20	4.55	8.26	11.2	14.3	17.5	21.1	24.6	28.4	31.7	35.2	38.1	41.0	43.1	45.2	46.4	47.5	47.6	47.7	46.7
25	6.35	10.3	14.0	18.5	23.3	28.5	33.6	38.9	43.7	48.5	52.5	56.5	59.5	62.3	64.0	65.5	65.7	65.7	64.4
30	7.84	12.2	17.2	23.3	29.7	36.5	43.3	50.2	56.6	62.9	68.2	73.4	77.4	81.1	83.4	85.2	85.5	85.3	83.7
35	8.89	14.1	20.8	28.4	36.6	45.1	53.6	62.2	70.2	78.2	85.1	91.7	96.9	102	105	107	107	107	105
40	9.74	16.3	24.5	33.8	43.7	54.1	64.4	74.8	84.7	94.5	103	111	118	124	128	131	131	130	128
45	10.6	18.6	28.3	39.4	51.0	63.2	75.4	87.9	99.9	112	122	133	142	148	153	156	157	156	153
50	11.6	20.9	32.2	44.9	58.3	72.5	86.8	101	116	130	143	155	166	173	180	183	185	183	179
55	12.6	23.3	36.1	50.4	65.6	81.7	98.2	115	132	148	163	178	190	199	207	211	213	210	206
60	13.6	25.6	39.9	55.8	72.7	90.8	109	129	148	166	184	200	214	225	233	237	239	237	232
65	14.6	27.9	43.6	61.0	79.5	99.5	120	141	162	183	202	220	236	247	257	261	264	260	255
70	15.6	30.1	47.0	65.7	85.9	107	130	153	176	198	218	237	254	266	276	282	283	281	274
75	16.6	32.1	50.1	70.0	91.5	114	138	163	187	210	232	251	269	282	291	296	298	295	289
80	17.5	33.8	52.7	73.5	96.0	120	145	170	195	219	241	261	278	291	300	306	307	305	298
85	18.1	35.1	54.6	76.0	99.1	124	149	175	200	224	246	266	283	295	305	310	312	309	302
90	18.5	35.7	55.4	77.0	100	125	150	176	201	225	246	265	282	294	304	309	310	308	301
95	18.5	35.4	54.8	76.0	98.7	122	147	172	196	219	240	258	275	287	296	301	302	300	294
100	18.1	34.3	52.8	72.8	94.4	117	140	163	186	207	227	244	259	271	281	285	287	284	279
105	17.1	32.2	49.6	68.2	88.0	108	129	150	171	191	209	224	238	249	256	262	262	261	255
110	15.9	29.6	45.4	62.4	80.4	98.7	117	136	155	172	188	202	214	225	231	236	236	235	230
115	14.6	26.8	41.0	56.1	72.0	88.2	105	121	137	153	167	179	190	199	205	209	210	209	204
120	13.3	23.9	36.3	49.6	63.5	77.6	92.0	106	120	133	146	156	166	174	179	183	184	183	179
125	12.1	21.2	32.0	43.5	55.5	67.5	79.8	91.6	104	115	125	134	142	149	154	157	157	157	153
130	11.2	18.8	27.9	37.8	48.1	58.3	68.6	78.5	88.3	97.4	106	113	120	125	129	131	133	131	129
135	10.5	16.8	24.5	32.8	41.5	50.1	58.8	67.0	75.1	82.4	89.4	95.4	101	105	108	110	111	110	108
140	9.74	14.8	21.2	28.1	35.4	42.6	49.9	56.7	63.3	69.2	74.9	79.6	83.9	87.0	89.7	90.8	91.5	90.8	89.5
145	9.11	13.2	18.3	24.0	30.0	36.0	42.0	47.6	53.0	57.8	62.3	66.1	69.5	71.9	74.0	74.9	75.5	74.9	73.9
150	8.42	11.8	15.7	20.2	25.1	29.8	34.7	39.2	43.7	47.5	51.3	54.2	56.9	58.8	60.5	61.2	61.6	61.2	60.4
155	7.36	10.4	13.4	16.7	20.4	24.1	27.9	31.4	35.0	38.0	41.0	43.3	45.4	46.9	48.2	48.7	49.1	48.7	48.1
160	5.39	8.44	10.8	13.3	16.0	18.8	21.6	24.2	26.8	29.0	31.2	32.9	34.6	35.7	36.7	37.1	37.4	37.0	36.6
165	2.93	5.27	7.44	9.09	11.0	13.0	15.3	17.3	19.3	20.7	22.2	23.3	24.5	25.2	25.9	26.1	26.3	26.0	25.8
170	1.30	2.28	3.54	4.81	6.20	7.30	8.63	9.92	11.4	12.8	14.3	15.0	15.7	16.0	16.4	16.5	16.6	16.4	16.3
175	0.29	0.59	0.86	1.15	1.51	1.84	2.28	2.61	3.09	3.43	4.07	5.07	7.00	7.91	8.64	8.51	8.67	8.39	8.27
180	0.03	0.04	0.03	0.05	0.04	0.05	0.04	0.05	0.04	0.05	0.04	0.06	0.05	0.05	0.05	0.05	0.05	0.06	0.05

C Range: 0 - 360DEG
 C Interval: 5.0DEG
 Test Speed: HIGH
 Temperature:25DEG
 Operators:luominxian
 Test Date:2017-12-12

γ Range: 0 - 180DEG
 γ Interval: 0.5DEG
 Test System:EVERFINE GO-2000A_V1 SYSTEM V2.0.272
 Humidity:70%
 Test Distance:8.425m [K=1.0000]
 Remarks:

LUMINOUS DISTRIBUTION INTENSITY DATA

Test:U:121.0V I:0.1151A P:12.13W PF:0.8719 Lamp Flux:668.162x1 lm		
NAME:	TYPE:壁灯	WEIGHT:
DIM.:	SPEC.:	SERIAL No.:20171212-02
MFR.: target	SUR.:145*40MM	PROTECTION ANGLE:

Table--4

UNIT: cd

C(DEG) γ (DEG)	285	290	295	300	305	310	315	320	325	330	335	340	345	350	355				
0	0.22	0.29	0.28	0.36	0.35	0.43	0.41	0.49	0.46	0.52	0.49	0.53	0.49	0.51	0.46				
5	7.86	7.47	7.31	6.79	6.44	5.69	5.18	4.38	3.72	2.88	2.28	1.58	1.00	0.63	0.49				
10	17.6	16.9	16.4	15.5	14.8	13.7	12.7	11.5	10.4	8.74	7.07	5.09	3.20	1.68	0.60				
15	30.3	29.1	27.9	26.1	24.4	22.2	20.2	17.8	15.7	13.5	11.4	9.05	6.25	3.22	1.01				
20	45.7	43.8	41.8	38.9	36.1	32.7	29.4	25.7	22.1	18.5	15.2	12.1	9.09	5.17	1.68				
25	62.9	60.2	57.3	53.4	49.4	44.6	39.9	34.7	29.6	24.4	19.6	15.1	11.2	7.09	2.39				
30	81.5	77.9	74.0	68.9	63.6	57.4	51.2	44.4	37.7	30.9	24.5	18.4	13.2	8.68	3.14				
35	102	97.1	91.9	85.5	78.6	70.8	63.0	54.6	46.3	37.8	29.6	21.9	15.3	9.79	3.93				
40	124	118	111	103	94.5	84.9	75.2	65.0	54.9	44.7	35.0	25.6	17.4	10.8	4.71				
45	147	140	132	122	111	99.4	87.7	75.5	63.6	51.7	40.3	29.4	19.7	11.7	5.38				
50	172	164	153	141	128	114	100	86.2	72.3	58.6	45.5	33.1	22.0	12.7	5.88				
55	198	188	175	161	146	129	113	96.8	80.9	65.4	50.7	36.8	24.2	13.6	6.12				
60	222	211	197	180	163	144	126	107	89.3	72.0	55.6	40.3	26.4	14.6	6.23				
65	245	233	217	199	179	158	138	117	97.2	78.2	60.3	43.6	28.5	15.5	6.28				
70	263	251	233	214	193	171	149	126	105	84.0	64.8	46.8	30.5	16.5	6.33				
75	279	265	247	227	206	182	158	134	111	89.3	68.7	49.6	32.3	17.3	6.38				
80	288	274	256	237	214	190	165	141	117	93.7	72.1	52.1	33.9	18.1	6.45				
85	292	279	261	242	219	195	170	145	120	96.8	74.6	53.9	35.1	18.7	6.52				
90	292	278	261	242	220	196	171	146	122	98.2	75.7	54.9	35.7	19.1	6.59				
95	284	271	255	236	215	192	168	144	120	97.0	75.0	54.4	35.5	19.1	6.75				
100	270	256	242	224	204	183	160	138	115	93.2	72.2	52.6	34.4	18.6	6.82				
105	248	236	222	207	188	169	148	128	107	87.1	67.7	49.4	32.4	17.6	6.74				
110	223	213	200	186	170	153	135	116	97.6	79.6	62.1	45.4	29.9	16.4	6.60				
115	198	189	178	166	151	136	120	104	87.4	71.5	55.8	40.9	27.0	15.1	6.46				
120	174	165	155	145	132	119	105	91.4	77.1	63.2	49.5	36.4	24.2	13.7	6.36				
125	149	142	133	124	114	103	91.1	79.3	67.1	55.3	43.3	32.0	21.4	12.5	6.31				
130	125	120	113	106	96.9	87.9	78.1	68.3	58.0	47.9	37.7	28.0	18.9	11.5	6.22				
135	104	100	95.0	89.1	82.1	74.8	66.7	58.5	49.9	41.3	32.7	24.5	16.9	10.8	6.04				
140	86.8	83.7	79.4	74.6	68.9	63.0	56.4	49.7	42.4	35.3	28.0	21.2	14.9	9.95	5.04				
145	71.8	69.3	65.9	62.1	57.5	52.7	47.3	41.8	35.8	29.9	23.9	18.3	13.3	9.29	4.14				
150	58.7	56.8	54.0	51.0	47.3	43.4	39.0	34.5	29.6	24.9	20.1	15.7	11.8	8.47	3.22				
155	46.8	45.3	43.1	40.7	37.7	34.7	31.2	27.7	23.9	20.2	16.6	13.3	10.4	7.11	2.36				
160	35.5	34.4	32.7	31.0	28.7	26.5	23.9	21.3	18.6	16.0	13.4	11.2	8.80	5.15	1.38				
165	25.0	24.3	23.1	22.0	20.4	19.0	17.3	15.7	13.9	12.3	10.6	8.79	5.47	2.56	0.58				
170	15.9	15.5	14.8	14.2	13.4	12.7	11.7	10.9	9.90	7.96	4.91	3.21	1.85	0.88	0.39				
175	7.54	6.96	5.50	4.60	3.60	3.00	2.32	1.90	1.45	1.12	0.82	0.57	0.44	0.33	0.37				
180	0.08	0.07	0.09	0.09	0.10	0.10	0.14	0.16	0.19	0.20	0.26	0.28	0.31	0.31	0.36				

C Range: 0 - 360DEG
 C Interval: 5.0DEG
 Test Speed: HIGH
 Temperature:25DEG
 Operators:luominxian
 Test Date:2017-12-12

γ Range: 0 - 180DEG
 γ Interval: 0.5DEG
 Test System:EVERFINE GO-2000A_V1 SYSTEM V2.0.272
 Humidity:70%
 Test Distance:8.425m [K=1.0000]
 Remarks:

Photometric Data Table [cd]

G/C	0.0	5.0	10.0	15.0	20.0	25.0	30.0	35.0	40.0	45.0
0.0	0.3984	0.4029	0.4256	0.3757	0.3941	0.3486	0.3531	0.3214	0.2989	0.2626
2.5	0.3984	0.3923	0.4202	0.3709	0.3927	0.3443	0.3521	0.3218	0.2992	0.2626
5.0	0.3984	0.3849	0.4181	0.3632	0.3900	0.3450	0.3496	0.3227	0.3002	0.2717
7.5	0.3984	0.3803	0.4142	0.3645	0.3872	0.3457	0.3451	0.3236	0.3012	0.2753
10.0	0.3984	0.3765	0.4142	0.3658	0.3837	0.3464	0.3440	0.3246	0.3022	0.2786
12.5	0.3984	0.3727	0.4029	0.3610	0.3800	0.3471	0.3440	0.3255	0.3031	0.2852
15.0	0.3984	0.3639	0.3938	0.3553	0.3759	0.3477	0.3440	0.3306	0.3043	0.3010
17.5	0.3893	0.3576	0.3857	0.3537	0.3735	0.3485	0.3440	0.3353	0.3054	0.3096
20.0	0.3667	0.3349	0.3717	0.3532	0.3712	0.3496	0.3440	0.3418	0.3065	0.3215
22.5	0.3486	0.3213	0.3685	0.3348	0.3648	0.3507	0.3440	0.3531	0.3093	0.3308
25.0	0.3325	0.3033	0.3557	0.3124	0.3595	0.3518	0.3440	0.3555	0.3124	0.3575
27.5	0.3253	0.2924	0.3479	0.3096	0.3549	0.3529	0.3440	0.3670	0.3332	0.3713
30.0	0.3146	0.2852	0.3395	0.2968	0.3520	0.3540	0.3440	0.3830	0.3667	0.3939
32.5	0.3081	0.2823	0.3291	0.2942	0.3486	0.3550	0.3440	0.3857	0.3814	0.4077
35.0	0.2988	0.2656	0.3197	0.2942	0.3429	0.3560	0.3515	0.3984	0.3832	0.4301
37.5	0.2910	0.2580	0.3124	0.2942	0.3400	0.3570	0.3664	0.4110	0.3892	0.4529
40.0	0.2822	0.2439	0.3061	0.2942	0.3377	0.3630	0.3712	0.4210	0.4209	0.4801
42.5	0.2743	0.2414	0.2989	0.2942	0.3348	0.3712	0.3760	0.4347	0.4307	0.5026
45.0	0.2582	0.2389	0.2942	0.2942	0.3305	0.3787	0.3808	0.4530	0.4482	0.5387
47.5	0.2530	0.2364	0.2880	0.2942	0.3305	0.3804	0.3804	0.4798	0.4931	0.5617
50.0	0.2501	0.2357	0.2852	0.2942	0.3305	0.3929	0.4204	0.4935	0.5206	0.6021
52.5	0.2385	0.2355	0.2802	0.2942	0.3305	0.4011	0.4281	0.5161	0.5294	0.6293
55.0	0.2305	0.2353	0.2760	0.2942	0.3305	0.4101	0.4358	0.5343	0.5793	0.6611
57.5	0.2218	0.2351	0.2729	0.2942	0.3305	0.4165	0.4434	0.5479	0.5838	0.6972
60.0	0.2168	0.2241	0.2720	0.2942	0.3305	0.4228	0.4511	0.5660	0.6108	0.7288
62.5	0.2116	0.2217	0.2663	0.2942	0.3305	0.4301	0.4599	0.5904	0.6427	0.7562
65.0	0.2060	0.2038	0.2625	0.2942	0.3305	0.4397	0.4843	0.6114	0.6564	0.7878
67.5	0.2010	0.1856	0.2600	0.2942	0.3323	0.4410	0.5066	0.6274	0.7197	0.8150
70.0	0.1992	0.1789	0.2587	0.2942	0.3439	0.4422	0.5133	0.6384	0.7427	0.8511
72.5	0.1851	0.1690	0.2582	0.2942	0.3575	0.4435	0.5173	0.6533	0.7446	0.8782
75.0	0.1826	0.1604	0.2524	0.2908	0.3598	0.4425	0.5252	0.6558	0.7465	0.8845
77.5	0.1765	0.1519	0.2467	0.2798	0.3636	0.4415	0.5343	0.6583	0.7560	0.8873
80.0	0.1668	0.1452	0.2400	0.2671	0.3656	0.4405	0.5427	0.6609	0.7696	0.8901
82.5	0.1585	0.1464	0.2345	0.2601	0.3603	0.4394	0.5420	0.6595	0.7863	0.8929
85.0	0.1494	0.1476	0.2293	0.2399	0.3550	0.4254	0.5413	0.6582	0.7921	0.8956
87.5	0.1449	0.1488	0.2222	0.2335	0.3497	0.4210	0.5407	0.6569	0.7922	0.8890
90.0	0.1378	0.1372	0.2123	0.2307	0.3458	0.4071	0.5400	0.6472	0.7915	0.8800
92.5	0.1357	0.1368	0.2082	0.2253	0.3404	0.3843	0.5393	0.6244	0.7877	0.8722
95.0	0.1266	0.1364	0.1998	0.2241	0.3395	0.3762	0.5386	0.6044	0.7741	0.8646
97.5	0.1239	0.1360	0.1931	0.2228	0.3322	0.3696	0.5229	0.5930	0.7554	0.8508
100.0	0.1216	0.1356	0.1907	0.2173	0.3196	0.3665	0.5089	0.5831	0.7381	0.8238
102.5	0.1184	0.1041	0.1793	0.2037	0.3035	0.3633	0.4980	0.5763	0.7198	0.7921
105.0	0.1176	0.0860	0.1710	0.1882	0.2957	0.3392	0.4753	0.5296	0.6927	0.7694
107.5	0.0996	0.0860	0.1649	0.1796	0.2764	0.3124	0.4572	0.5116	0.6610	0.7327
110.0	0.0996	0.0860	0.1607	0.1709	0.2717	0.3022	0.4346	0.4889	0.6293	0.6924
112.5	0.0996	0.0860	0.1565	0.1584	0.2669	0.2964	0.4122	0.4480	0.5935	0.6473
115.0	0.0996	0.0815	0.1543	0.1493	0.2491	0.2907	0.3894	0.4254	0.5661	0.6065
117.5	0.0996	0.0815	0.1539	0.1468	0.2399	0.2640	0.3711	0.4028	0.5252	0.5748
120.0	0.0996	0.0815	0.1426	0.1443	0.2211	0.2398	0.3396	0.3622	0.4936	0.5295
122.5	0.0996	0.0815	0.1369	0.1418	0.2164	0.2173	0.3259	0.3621	0.4663	0.5087
125.0	0.0996	0.0815	0.1297	0.1380	0.2038	0.2090	0.3088	0.3213	0.4347	0.4526
127.5	0.0996	0.0815	0.1264	0.1338	0.1992	0.2006	0.2942	0.2942	0.4075	0.4299
130.0	0.0996	0.0815	0.1241	0.1268	0.1857	0.1810	0.2716	0.2748	0.3759	0.3890
132.5	0.0996	0.0815	0.1227	0.1211	0.1811	0.1675	0.2490	0.2444	0.3486	0.3575
135.0	0.0996	0.0815	0.1216	0.1155	0.1719	0.1524	0.2355	0.2236	0.3259	0.3212
137.5	0.1042	0.0815	0.1183	0.1098	0.1624	0.1423	0.2310	0.2181	0.2988	0.2970
140.0	0.1094	0.0815	0.1151	0.1042	0.1544	0.1326	0.1992	0.1989	0.2807	0.2852
142.5	0.1121	0.0859	0.1107	0.0814	0.1405	0.1176	0.1910	0.1630	0.2534	0.2263
145.0	0.1123	0.0679	0.1086	0.0769	0.1341	0.1041	0.1766	0.1449	0.2263	0.2126
147.5	0.1126	0.0585	0.0996	0.0679	0.1268	0.0905	0.1584	0.1348	0.2037	0.1764
150.0	0.1128	0.0362	0.0860	0.0679	0.1107	0.0724	0.1342	0.1131	0.1811	0.1471
152.5	0.1130	0.0317	0.0860	0.0542	0.1000	0.0724	0.1312	0.0860	0.1595	0.1358
155.0	0.1087	0.0317	0.0725	0.0405	0.0950	0.0724	0.1115	0.0770	0.1359	0.1084
157.5	0.0680	0.0317	0.0679	0.0317	0.0860	0.0407	0.0997	0.0770	0.1179	0.0770
160.0	0.0544	0.0317	0.0633	0.0317	0.0680	0.0362	0.0861	0.0770	0.0997	0.0679
162.5	0.0498	0.0317	0.0499	0.0317	0.0590	0.0362	0.0725	0.0452	0.0906	0.0634
165.0	0.0453	0.0317	0.0453	0.0317	0.0588	0.0362	0.0679	0.0407	0.0815	0.0587
167.5	0.0407	0.0317	0.0453	0.0317	0.0632	0.0362	0.0724	0.0407	0.0859	0.0407
170.0	0.0407	0.0317	0.0453	0.0317	0.0453	0.0362	0.0679	0.0407	0.0680	0.0362
172.5	0.0407	0.0317	0.0453	0.0317	0.0453	0.0362	0.0588	0.0407	0.0635	0.0362
175.0	0.0407	0.0317	0.0453	0.0317	0.0453	0.0362	0.0588	0.0407	0.0588	0.0362
177.5	0.0362	0.0317	0.0407	0.0362	0.0453	0.0362	0.0498	0.0407	0.0453	0.0362
180.0	0.0362	0.0362	0.0362	0.0362	0.0407	0.0362	0.0407	0.0407	0.0407	0.0362

C Range: 0 - 360DEG
C Interval: 5.0DEG
Test Speed: HIGH
Temperature: 25DEG
Operators: luominxian
Test Date: 2017-12-12

γ Range: 0 - 180DEG
 γ Interval: 0.5DEG
Test System: EVERFINE GO-2000A_V1 SYSTEM V2.0.272
Humidity: 70%
Test Distance: 8.425m [K=1.0000]
Remarks:

Photometric Data Table [cd]

G/C	50.0	55.0	60.0	65.0	70.0	75.0	80.0	85.0	90.0	95.0
0.0	0.2354	0.2128	0.1993	0.1811	0.1676	0.1584	0.1676	0.1630	0.1812	0.1947
2.5	0.2360	0.2173	0.1953	0.1901	0.1679	0.1585	0.1683	0.1645	0.1765	0.1954
5.0	0.2375	0.2219	0.1968	0.1907	0.1690	0.1764	0.1704	0.1720	0.1800	0.1971
7.5	0.2390	0.2324	0.1983	0.1992	0.1701	0.1883	0.1724	0.1856	0.1843	0.1989
10.0	0.2405	0.2445	0.2028	0.2174	0.1712	0.1993	0.1744	0.1994	0.1886	0.2093
12.5	0.2419	0.2566	0.2119	0.2399	0.1764	0.2175	0.1765	0.2218	0.1929	0.2309
15.0	0.2434	0.2717	0.2238	0.2626	0.2072	0.2492	0.2119	0.2491	0.2217	0.2980
17.5	0.2490	0.2853	0.2489	0.2809	0.2262	0.2807	0.2308	0.2852	0.2351	0.2901
20.0	0.2897	0.3079	0.2671	0.3169	0.2625	0.3078	0.2804	0.3170	0.2850	0.3260
22.5	0.2897	0.3350	0.2957	0.3440	0.2985	0.3442	0.3032	0.3531	0.3122	0.3668
25.0	0.3123	0.3531	0.3166	0.3714	0.3346	0.3848	0.3529	0.4030	0.3532	0.4076
27.5	0.3349	0.3848	0.3531	0.4075	0.3667	0.4213	0.3847	0.4394	0.3979	0.4483
30.0	0.3577	0.4165	0.3756	0.4438	0.4204	0.4665	0.4345	0.4847	0.4435	0.4936
32.5	0.3846	0.4392	0.4300	0.4845	0.4482	0.5162	0.4888	0.5345	0.4979	0.5525
35.0	0.4204	0.4799	0.4526	0.5252	0.5113	0.5613	0.5341	0.5930	0.5562	0.5976
37.5	0.4300	0.5071	0.4995	0.5660	0.5385	0.6158	0.5811	0.6387	0.6016	0.6520
40.0	0.4707	0.5434	0.5386	0.6158	0.5928	0.6610	0.6415	0.7017	0.6607	0.7154
42.5	0.5026	0.5885	0.5794	0.6565	0.6518	0.7198	0.7062	0.7606	0.7288	0.7789
45.0	0.5386	0.6205	0.6376	0.7109	0.7061	0.7786	0.7557	0.8149	0.7876	0.8422
47.5	0.5793	0.6611	0.6697	0.7607	0.7514	0.8375	0.8279	0.8830	0.8601	0.9100
50.0	0.6066	0.7065	0.7152	0.8105	0.8148	0.8920	0.8825	0.9464	0.9278	0.9735
52.5	0.6473	0.7515	0.7737	0.8647	0.8646	0.9557	0.9460	1.014	0.9911	1.032
55.0	0.6880	0.7925	0.8191	0.9237	0.9370	1.019	1.014	1.082	1.059	1.100
57.5	0.7243	0.8421	0.8736	0.9824	0.9955	1.082	1.100	1.155	1.140	1.172
60.0	0.7650	0.8828	0.9276	1.037	1.054	1.146	1.154	1.218	1.199	1.245
62.5	0.8057	0.9326	0.9687	1.087	1.113	1.213	1.222	1.290	1.267	1.308
65.0	0.8735	0.9780	1.014	1.141	1.168	1.263	1.281	1.349	1.326	1.376
67.5	0.8833	1.014	1.077	1.191	1.236	1.327	1.353	1.417	1.394	1.444
70.0	0.9144	1.055	1.114	1.241	1.281	1.385	1.403	1.471	1.457	1.503
72.5	0.9460	1.082	1.150	1.286	1.331	1.440	1.462	1.526	1.516	1.557
75.0	0.9687	1.118	1.190	1.327	1.381	1.476	1.507	1.571	1.566	1.598
77.5	1.005	1.141	1.219	1.354	1.408	1.517	1.544	1.612	1.611	1.639
80.0	1.016	1.164	1.245	1.381	1.444	1.553	1.580	1.657	1.631	1.675
82.5	1.014	1.169	1.258	1.386	1.462	1.571	1.604	1.675	1.667	1.698
85.0	1.023	1.171	1.270	1.387	1.477	1.573	1.616	1.666	1.675	1.716
87.5	1.021	1.163	1.281	1.389	1.488	1.574	1.618	1.666	1.684	1.722
90.0	1.019	1.154	1.282	1.381	1.484	1.569	1.614	1.666	1.686	1.706
92.5	1.017	1.154	1.289	1.372	1.479	1.548	1.610	1.655	1.687	1.679
95.0	1.015	1.114	1.276	1.362	1.474	1.535	1.607	1.639	1.689	1.668
97.5	1.009	1.095	1.254	1.331	1.458	1.517	1.603	1.612	1.671	1.648
100.0	0.9869	1.073	1.222	1.308	1.435	1.480	1.575	1.593	1.639	1.616
102.5	0.9597	1.041	1.195	1.272	1.399	1.440	1.535	1.544	1.607	1.575
105.0	0.9280	1.005	1.154	1.222	1.354	1.399	1.489	1.507	1.553	1.526
107.5	0.8784	0.9595	1.109	1.168	1.299	1.344	1.435	1.435	1.499	1.467
110.0	0.8421	0.9099	1.055	1.122	1.240	1.276	1.367	1.376	1.426	1.403
112.5	0.7925	0.8556	1.000	1.059	1.173	1.213	1.290	1.304	1.358	1.331
115.0	0.7471	0.8057	0.9373	0.9955	1.105	1.136	1.227	1.222	1.281	1.254
117.5	0.6972	0.7556	0.8829	0.9323	1.037	1.064	1.155	1.154	1.204	1.177
120.0	0.6565	0.7012	0.8285	0.8733	0.9691	1.005	1.078	1.077	1.137	1.109
122.5	0.6111	0.6473	0.7650	0.7966	0.9058	0.9324	1.005	1.009	1.060	1.036
125.0	0.5749	0.6019	0.7155	0.7467	0.8468	0.8601	0.9374	0.9324	0.9872	0.9641
127.5	0.5342	0.5612	0.6656	0.6924	0.7833	0.8009	0.8741	0.8646	0.9147	0.8957
130.0	0.4891	0.5024	0.6202	0.6518	0.7245	0.7285	0.8105	0.7966	0.8558	0.8238
132.5	0.4529	0.4878	0.5615	0.5885	0.6836	0.6744	0.7517	0.7331	0.7923	0.7603
135.0	0.4211	0.4854	0.5645	0.5840	0.6384	0.6745	0.6928	0.7135	0.7425	0.7528
137.5	0.4453	0.5386	0.5619	0.7758	0.6435	0.6473	0.7112	0.7132	0.7177	0.6871
140.0	0.3534	0.3575	0.4438	0.4387	0.5208	0.5070	0.5706	0.5565	0.6158	0.5749
142.5	0.3128	0.3032	0.3893	0.3800	0.4619	0.4434	0.5119	0.5025	0.5525	0.5204
145.0	0.2852	0.2850	0.3533	0.3530	0.4124	0.4071	0.4753	0.4435	0.5027	0.4660
147.5	0.2535	0.2350	0.3080	0.2940	0.3760	0.3531	0.4211	0.3889	0.4440	0.4206
150.0	0.2176	0.1990	0.2584	0.2489	0.3306	0.2985	0.3622	0.3259	0.3850	0.3745
152.5	0.1902	0.1672	0.2356	0.2262	0.2899	0.2740	0.3215	0.2852	0.3441	0.3123
155.0	0.1631	0.1473	0.2084	0.1898	0.2535	0.2171	0.2852	0.2398	0.2988	0.2670
157.5	0.1404	0.1086	0.1766	0.1598	0.2129	0.1855	0.2490	0.2129	0.2584	0.2225
160.0	0.1268	0.0904	0.1584	0.1447	0.1858	0.1538	0.2085	0.1675	0.2220	0.1897
162.5	0.1087	0.0770	0.1359	0.1038	0.1586	0.1268	0.1811	0.1593	0.1947	0.1493
165.0	0.0905	0.0770	0.1132	0.0815	0.1403	0.1086	0.1585	0.1309	0.1676	0.1312
167.5	0.0906	0.0678	0.1087	0.0724	0.1259	0.0860	0.1403	0.0949	0.1494	0.1084
170.0	0.0725	0.0362	0.0951	0.0724	0.1132	0.0678	0.1222	0.0815	0.1266	0.0815
172.5	0.0724	0.0362	0.0815	0.0678	0.0996	0.0590	0.1042	0.0634	0.0998	0.0724
175.0	0.0588	0.0362	0.0679	0.0407	0.0726	0.0453	0.0861	0.0498	0.0861	0.0633
177.5	0.0498	0.0362	0.0588	0.0407	0.0588	0.0453	0.0635	0.0498	0.0634	0.0543
180.0	0.0362	0.0362	0.0407	0.0407	0.0453	0.0453	0.0498	0.0498	0.0543	0.0543

C Range: 0 - 360DEG
C Interval: 5.0DEG
Test Speed: HIGH
Temperature: 25DEG
Operators: luominxian
Test Date: 2017-12-12

γ Range: 0 - 180DEG
 γ Interval: 0.5DEG
Test System: EVERFINE GO-2000A_V1 SYSTEM V2.0.272
Humidity: 70%
Test Distance: 8.425m [K=1.0000]
Remarks:

Photometric Data Table [cd]

G/C	100.0	105.0	110.0	115.0	120.0	125.0	130.0	135.0	140.0	145.0
0.0	0.2355	0.2218	0.2943	0.2806	0.3581	0.3479	0.4302	0.4072	0.4890	0.4571
2.5	0.2128	0.2218	0.2583	0.2354	0.3170	0.2958	0.3713	0.3576	0.4302	0.4159
5.0	0.2059	0.2218	0.2426	0.2366	0.2854	0.2624	0.3350	0.3075	0.3938	0.3691
7.5	0.2059	0.2218	0.2309	0.2377	0.2645	0.2501	0.3125	0.3011	0.3532	0.3304
10.0	0.2086	0.2245	0.2234	0.2389	0.2580	0.2514	0.2898	0.2716	0.3307	0.3032
12.5	0.2114	0.2373	0.2245	0.2400	0.2524	0.2527	0.2807	0.2705	0.3125	0.2907
15.0	0.2227	0.2584	0.2257	0.2581	0.2507	0.2528	0.2671	0.2691	0.2988	0.2807
17.5	0.2399	0.2898	0.2399	0.2852	0.2490	0.2717	0.2661	0.2677	0.2897	0.2820
20.0	0.2896	0.3306	0.2852	0.3260	0.2806	0.2988	0.2668	0.2807	0.2882	0.2833
22.5	0.3213	0.3668	0.3168	0.3576	0.2987	0.3307	0.2851	0.3034	0.2919	0.2847
25.0	0.3621	0.4075	0.3530	0.3984	0.3568	0.3713	0.3033	0.3306	0.2961	0.2944
27.5	0.4029	0.4528	0.3981	0.4347	0.3711	0.4074	0.3529	0.3579	0.3021	0.3124
30.0	0.4526	0.4982	0.4480	0.4757	0.4205	0.4391	0.3712	0.3893	0.3158	0.3350
32.5	0.5115	0.5433	0.5070	0.5297	0.4570	0.4754	0.4118	0.4212	0.3528	0.3577
35.0	0.5739	0.5934	0.5339	0.5705	0.4979	0.5206	0.4477	0.4573	0.3712	0.3849
37.5	0.6152	0.6565	0.5883	0.6158	0.5477	0.5569	0.4842	0.4889	0.4119	0.4029
40.0	0.6740	0.7065	0.6473	0.6655	0.5971	0.6067	0.5206	0.5252	0.4387	0.4346
42.5	0.7286	0.7654	0.7152	0.7245	0.6518	0.6477	0.5794	0.5570	0.4663	0.4529
45.0	0.7922	0.8240	0.7605	0.7787	0.6968	0.6928	0.6110	0.5933	0.5084	0.4802
47.5	0.8597	0.8876	0.8191	0.8331	0.7510	0.7425	0.6472	0.6295	0.5338	0.5162
50.0	0.9276	0.9466	0.8781	0.8830	0.8012	0.7834	0.6969	0.6746	0.5837	0.5432
52.5	0.9868	1.014	0.9416	0.9417	0.8556	0.8376	0.7378	0.7063	0.5974	0.5659
55.0	1.064	1.082	1.009	1.005	0.9228	0.8923	0.7877	0.7561	0.6471	0.5931
57.5	1.140	1.141	1.082	1.068	0.9687	0.9372	0.8373	0.7967	0.6697	0.6222
60.0	1.204	1.204	1.136	1.127	1.032	0.9915	0.8834	0.8375	0.7061	0.6564
62.5	1.267	1.277	1.204	1.182	1.086	1.046	0.9325	0.8694	0.7423	0.6746
65.0	1.331	1.336	1.263	1.241	1.141	1.091	0.9642	0.9101	0.7782	0.7019
67.5	1.394	1.403	1.313	1.299	1.182	1.137	1.019	0.9461	0.8011	0.7335
70.0	1.453	1.453	1.376	1.345	1.231	1.182	1.050	0.9778	0.8329	0.7560
72.5	1.516	1.508	1.445	1.390	1.286	1.222	1.082	1.005	0.8690	0.7742
75.0	1.562	1.557	1.462	1.440	1.322	1.254	1.114	1.032	0.8774	0.7932
77.5	1.598	1.598	1.507	1.467	1.358	1.286	1.157	1.059	0.8963	0.8104
80.0	1.616	1.625	1.539	1.498	1.376	1.304	1.163	1.073	0.9142	0.8091
82.5	1.661	1.648	1.562	1.517	1.399	1.307	1.177	1.074	0.9289	0.8078
85.0	1.674	1.650	1.580	1.518	1.417	1.306	1.182	1.075	0.9312	0.8066
87.5	1.693	1.651	1.587	1.519	1.422	1.305	1.185	1.076	0.9335	0.8023
90.0	1.691	1.647	1.597	1.521	1.427	1.304	1.186	1.077	0.9357	0.8048
92.5	1.690	1.634	1.595	1.515	1.426	1.294	1.186	1.046	0.9447	0.8028
95.0	1.684	1.612	1.589	1.489	1.421	1.281	1.186	1.032	0.9393	0.7921
97.5	1.661	1.597	1.566	1.458	1.408	1.254	1.182	1.018	0.9281	0.7577
100.0	1.639	1.562	1.535	1.444	1.376	1.236	1.159	1.000	0.9100	0.7424
102.5	1.594	1.521	1.498	1.394	1.340	1.200	1.132	0.9731	0.8919	0.7242
105.0	1.544	1.471	1.458	1.353	1.304	1.163	1.100	0.9506	0.8692	0.7107
107.5	1.485	1.421	1.399	1.295	1.254	1.123	1.060	0.9184	0.8333	0.6745
110.0	1.426	1.367	1.340	1.245	1.204	1.086	1.019	0.8762	0.8104	0.6563
112.5	1.354	1.285	1.272	1.181	1.146	1.027	0.9736	0.8372	0.7786	0.6525
115.0	1.286	1.222	1.213	1.127	1.091	0.9730	0.9371	0.7967	0.7425	0.6021
117.5	1.218	1.150	1.145	1.063	1.042	0.9320	0.8873	0.7515	0.7107	0.5902
120.0	1.145	1.082	1.086	1.009	0.9780	0.8734	0.8465	0.7198	0.6745	0.5658
122.5	1.068	1.010	1.019	0.9414	0.9190	0.8237	0.7967	0.6744	0.6428	0.5205
125.0	1.010	0.9459	0.9597	0.8782	0.8739	0.7831	0.7519	0.6463	0.6202	0.5158
127.5	0.9373	0.8826	0.8922	0.8239	0.8194	0.7288	0.7108	0.6066	0.5840	0.4661
130.0	0.8696	0.8147	0.8332	0.7604	0.7698	0.6788	0.6745	0.5703	0.5523	0.4462
132.5	0.8013	0.7514	0.7741	0.7107	0.7198	0.6426	0.6295	0.5296	0.5254	0.4345
135.0	0.7473	0.7008	0.7244	0.6619	0.6703	0.6018	0.5932	0.4981	0.5025	0.4028
137.5	0.6928	0.6519	0.6900	0.6197	0.6660	0.5793	0.5794	0.4771	0.4756	0.3803
140.0	0.6384	0.5836	0.6157	0.5703	0.5841	0.5160	0.5391	0.4390	0.4482	0.3621
142.5	0.5659	0.5206	0.5570	0.5025	0.5342	0.4615	0.4845	0.4028	0.4165	0.3339
145.0	0.5254	0.4752	0.5118	0.4525	0.4891	0.4255	0.4437	0.3712	0.3848	0.3078
147.5	0.4709	0.4298	0.4576	0.4072	0.4394	0.3667	0.3987	0.3394	0.3576	0.2850
150.0	0.4121	0.3756	0.4076	0.3576	0.3894	0.3349	0.3622	0.2895	0.3171	0.2534
152.5	0.3669	0.3391	0.3669	0.3167	0.3576	0.3022	0.3262	0.2623	0.2943	0.2299
155.0	0.3259	0.2851	0.3260	0.2752	0.3126	0.2666	0.2899	0.2265	0.2664	0.2173
157.5	0.2807	0.2398	0.2807	0.2353	0.2719	0.2263	0.2626	0.2128	0.2399	0.1856
160.0	0.2447	0.2084	0.2447	0.2173	0.2445	0.2123	0.2399	0.1720	0.2219	0.1675
162.5	0.2083	0.1673	0.2173	0.1673	0.2128	0.1539	0.2074	0.1538	0.1993	0.1584
165.0	0.1813	0.1448	0.1856	0.1436	0.1902	0.1403	0.1883	0.1481	0.1939	0.1584
167.5	0.1541	0.1263	0.1675	0.1295	0.1693	0.1295	0.1811	0.1425	0.1767	0.1584
170.0	0.1358	0.0905	0.1431	0.0949	0.1494	0.1040	0.1585	0.1411	0.1738	0.1584
172.5	0.1177	0.0724	0.1178	0.0905	0.1358	0.0996	0.1450	0.1408	0.1657	0.1584
175.0	0.0951	0.0724	0.1086	0.0860	0.1178	0.0996	0.1403	0.1406	0.1675	0.1584
177.5	0.0815	0.0724	0.0951	0.0860	0.1086	0.0996	0.1268	0.1404	0.1578	0.1584
180.0	0.0679	0.0679	0.0815	0.0860	0.0996	0.0996	0.1177	0.1358	0.1539	0.1584

C Range: 0 - 360DEG
 C Interval: 5.0DEG
 Test Speed: HIGH
 Temperature: 25DEG
 Operators: luominxian
 Test Date: 2017-12-12

γ Range: 0 - 180DEG
 γ Interval: 0.5DEG
 Test System: EVERFINE GO-2000A_V1 SYSTEM V2.0.272
 Humidity: 70%
 Test Distance: 8.425m [K=1.0000]
 Remarks:

Photometric Data Table [cd]

G/C	150.0	155.0	160.0	165.0	170.0	175.0	180.0	185.0	190.0	195.0
0.0	0.5210	0.4933	0.5297	0.4888	0.5117	0.4572	0.3984	0.4029	0.4256	0.3757
2.5	0.4710	0.4435	0.5026	0.4526	0.4978	0.4423	0.3984	0.4074	0.4355	0.3802
5.0	0.4302	0.4163	0.4708	0.4346	0.4756	0.4373	0.3981	0.4163	0.4668	0.6971
7.5	0.4029	0.3801	0.4435	0.4254	0.4673	0.4380	0.3876	0.4215	0.7262	1.604
10.0	0.3758	0.3561	0.4175	0.3938	0.4482	0.4388	0.3791	0.4300	1.282	2.684
12.5	0.3505	0.3304	0.4073	0.3756	0.4409	0.4074	0.3757	0.5064	1.948	4.077
15.0	0.3350	0.3033	0.3804	0.3567	0.4211	0.3983	0.3666	0.6924	2.670	5.599
17.5	0.3205	0.3020	0.3667	0.3515	0.4138	0.3888	0.3545	0.9531	3.577	6.967
20.0	0.3087	0.3007	0.3499	0.3350	0.4029	0.3865	0.3457	1.243	4.546	8.256
22.5	0.2952	0.2993	0.3337	0.3166	0.3847	0.3712	0.3258	1.555	5.501	9.398
25.0	0.2906	0.2980	0.3258	0.3033	0.3670	0.3712	0.3107	1.854	6.354	10.33
27.5	0.2901	0.2967	0.3183	0.3033	0.3628	0.3711	0.2944	2.159	7.126	11.22
30.0	0.2917	0.2954	0.3057	0.3032	0.3531	0.3711	0.2942	2.506	7.845	12.16
32.5	0.2933	0.2944	0.3006	0.3032	0.3431	0.3484	0.2852	2.891	8.413	13.13
35.0	0.2988	0.2988	0.2900	0.3032	0.3305	0.3214	0.2760	3.276	8.888	14.13
37.5	0.3185	0.3159	0.2949	0.3032	0.3260	0.3143	0.2734	3.670	9.316	15.20
40.0	0.3484	0.3304	0.2958	0.3031	0.3172	0.3089	0.2708	4.024	9.738	16.27
42.5	0.3666	0.3439	0.2967	0.2946	0.3104	0.3010	0.2681	4.358	10.18	17.41
45.0	0.3782	0.3606	0.2975	0.2956	0.3032	0.2942	0.2716	4.653	10.64	18.56
47.5	0.3982	0.3758	0.2984	0.2965	0.2967	0.2942	0.3032	5.033	11.15	19.77
50.0	0.4299	0.3939	0.3017	0.2975	0.2917	0.2942	0.2421	5.096	11.59	20.90
52.5	0.4435	0.4129	0.3050	0.2984	0.2901	0.2942	0.2308	5.205	12.08	22.08
55.0	0.4661	0.4345	0.3034	0.3027	0.2878	0.2942	0.2200	5.269	12.57	23.27
57.5	0.5004	0.4482	0.3214	0.3069	0.2853	0.2942	0.2037	5.310	13.07	24.46
60.0	0.5071	0.4618	0.3440	0.3078	0.2827	0.2942	0.1720	5.346	13.58	25.62
62.5	0.5431	0.4844	0.3591	0.3078	0.2802	0.2942	0.1648	5.360	14.09	26.77
65.0	0.5658	0.4981	0.3666	0.3078	0.2777	0.2942	0.1522	5.378	14.60	27.91
67.5	0.5755	0.5116	0.3756	0.3078	0.2761	0.2942	0.1430	5.396	15.11	29.05
70.0	0.5930	0.5296	0.3766	0.3078	0.2761	0.2942	0.1364	5.423	15.62	30.11
72.5	0.6065	0.5336	0.3848	0.3078	0.2761	0.2942	0.1313	5.446	16.12	31.14
75.0	0.6427	0.5322	0.3939	0.3078	0.2761	0.2942	0.1208	5.482	16.60	32.09
77.5	0.6609	0.5308	0.4082	0.3078	0.2761	0.2944	0.1176	5.522	17.03	32.99
80.0	0.6609	0.5317	0.4298	0.3078	0.2761	0.2942	0.0996	5.554	17.46	33.81
82.5	0.6610	0.5341	0.4354	0.3078	0.2761	0.2852	0.0951	5.582	17.81	34.50
85.0	0.6610	0.5324	0.4429	0.3078	0.2761	0.2852	0.0951	5.622	18.10	35.06
87.5	0.6610	0.5307	0.4412	0.3078	0.2761	0.2852	0.0951	5.667	18.37	35.49
90.0	0.6610	0.5242	0.4396	0.3078	0.2761	0.2852	0.0951	5.744	18.52	35.70
92.5	0.6610	0.5158	0.4379	0.3033	0.2761	0.2852	0.0951	5.857	18.56	35.66
95.0	0.6610	0.5111	0.4363	0.2979	0.2761	0.2852	0.0951	5.957	18.53	35.43
97.5	0.6610	0.5062	0.4340	0.2942	0.2761	0.2852	0.0951	6.021	18.38	34.95
100.0	0.6564	0.5062	0.4282	0.2837	0.2716	0.2852	0.0951	6.039	18.07	34.26
102.5	0.6473	0.4888	0.4254	0.2810	0.2664	0.2852	0.0951	6.039	17.63	33.34
105.0	0.6247	0.4617	0.4164	0.2783	0.2613	0.2852	0.0951	6.016	17.14	32.23
107.5	0.6067	0.4482	0.3966	0.2739	0.2536	0.2852	0.0951	5.976	16.56	30.98
110.0	0.5840	0.4383	0.3868	0.2671	0.2535	0.2885	0.0951	5.926	15.93	29.65
112.5	0.5614	0.4345	0.3757	0.2674	0.2535	0.2868	0.0951	5.871	15.28	28.24
115.0	0.5452	0.4073	0.3712	0.2622	0.2535	0.2852	0.0996	5.840	14.61	26.80
117.5	0.5206	0.3892	0.3531	0.2579	0.2535	0.2898	0.0996	5.813	13.95	25.34
120.0	0.5026	0.3801	0.3494	0.2535	0.2535	0.2933	0.1041	5.812	13.30	23.94
122.5	0.4844	0.3666	0.3350	0.2535	0.2535	0.2938	0.1059	5.826	12.69	22.53
125.0	0.4618	0.3610	0.3295	0.2535	0.2535	0.2964	0.1099	5.858	12.14	21.21
127.5	0.4393	0.3485	0.3231	0.2535	0.2535	0.3013	0.1169	5.885	11.62	19.97
130.0	0.4299	0.3170	0.3090	0.2535	0.2535	0.3068	0.1224	5.908	11.17	18.79
132.5	0.4120	0.3087	0.3066	0.2535	0.2580	0.3163	0.1586	5.903	10.81	17.72
135.0	0.3940	0.3031	0.3043	0.2535	0.2691	0.3232	0.2168	5.835	10.50	16.78
137.5	0.3759	0.2898	0.3017	0.2535	0.2761	0.3264	0.0362	5.518	10.07	15.73
140.0	0.3621	0.2919	0.2989	0.2535	0.2761	0.3272	0.0362	5.212	9.737	14.84
142.5	0.3395	0.2808	0.2882	0.2535	0.2761	0.3279	0.0362	4.876	9.419	14.00
145.0	0.3169	0.2715	0.2807	0.2535	0.2761	0.3286	0.0362	4.501	9.111	13.23
147.5	0.2988	0.2422	0.2626	0.2535	0.2761	0.3294	0.0362	4.103	8.790	12.47
150.0	0.2673	0.2318	0.2536	0.2535	0.2761	0.3301	0.0362	3.699	8.423	11.75
152.5	0.2554	0.2234	0.2427	0.2535	0.2761	0.3305	0.0362	3.275	7.985	11.05
155.0	0.2400	0.2128	0.2382	0.2535	0.2761	0.3305	0.0362	2.812	7.360	10.36
157.5	0.2246	0.2127	0.2320	0.2535	0.2761	0.3305	0.0362	2.335	6.474	9.530
160.0	0.2146	0.2127	0.2263	0.2535	0.2761	0.3305	0.0362	1.808	5.390	8.437
162.5	0.2052	0.2127	0.2263	0.2569	0.2761	0.3305	0.0362	1.332	4.146	6.984
165.0	0.1991	0.2127	0.2263	0.2654	0.2761	0.3305	0.0362	1.002	2.931	5.274
167.5	0.1966	0.2127	0.2263	0.2715	0.3077	0.3305	0.0362	0.7610	1.987	3.636
170.0	0.1941	0.2152	0.2263	0.2718	0.3057	0.3305	0.0362	0.5083	1.296	2.278
172.5	0.1916	0.2194	0.2263	0.2822	0.3037	0.3305	0.0362	0.3040	0.7196	1.272
175.0	0.1891	0.2229	0.2263	0.2943	0.3016	0.3305	0.0362	0.1495	0.2927	0.5946
177.5	0.1866	0.2253	0.2263	0.2897	0.2996	0.3305	0.0362	0.0681	0.0723	0.1766
180.0	0.1856	0.2263	0.2671	0.3033	0.3033	0.3305	0.0362	0.0407	0.0317	0.0407

C Range: 0 - 360DEG
 C Interval: 5.0DEG
 Test Speed: HIGH
 Temperature: 25DEG
 Operators: luominxian
 Test Date: 2017-12-12

γ Range: 0 - 180DEG
 γ Interval: 0.5DEG
 Test System: EVERFINE GO-2000A_V1 SYSTEM V2.0.272
 Humidity: 70%
 Test Distance: 8.425m [K=1.0000]
 Remarks:

Photometric Data Table [cd]

G/C	200.0	205.0	210.0	215.0	220.0	225.0	230.0	235.0	240.0	245.0
0.0	0.3941	0.3486	0.3531	0.3214	0.2989	0.2626	0.2354	0.2128	0.1993	0.1811
2.5	0.4265	0.4502	0.5480	0.7378	0.8751	1.107	1.240	1.514	1.603	1.855
5.0	1.178	1.832	2.390	3.162	3.821	4.664	5.201	5.967	6.373	6.949
7.5	2.585	3.912	5.175	6.532	7.543	8.704	9.554	10.43	10.94	11.57
10.0	4.481	6.404	7.984	9.647	10.85	12.01	12.97	14.09	14.94	15.92
12.5	6.457	8.668	10.53	12.15	13.67	15.36	16.84	18.46	19.79	21.19
15.0	8.243	10.67	12.62	14.81	16.93	19.25	21.32	23.54	25.34	27.23
17.5	9.906	12.38	14.93	17.77	20.59	23.62	26.30	29.15	31.50	33.86
20.0	11.24	14.25	17.50	21.10	24.65	28.38	31.75	35.24	38.13	41.03
22.5	12.59	16.28	20.29	24.69	29.00	33.47	37.51	41.67	45.14	48.56
25.0	14.04	18.49	23.27	28.50	33.61	38.85	43.69	48.46	52.53	56.49
27.5	15.61	20.82	26.42	32.45	38.38	44.46	49.98	55.54	60.20	64.84
30.0	17.24	23.29	29.70	36.55	43.31	50.21	56.57	62.85	68.21	73.44
32.5	18.96	25.82	33.10	40.79	48.40	56.16	63.30	70.47	76.52	82.38
35.0	20.76	28.44	36.55	45.14	53.61	62.22	70.25	78.20	85.14	91.69
37.5	22.57	31.11	40.13	49.60	58.92	68.47	77.43	86.25	94.13	101.4
40.0	24.46	33.84	43.68	54.07	64.37	74.79	84.74	94.55	103.2	111.4
42.5	26.37	36.60	47.32	58.61	69.85	81.35	92.21	103.0	112.7	121.9
45.0	28.31	39.37	50.97	63.19	75.43	87.93	99.87	111.7	122.5	132.6
47.5	30.28	42.19	54.64	67.84	81.13	94.71	107.9	120.8	132.5	143.7
50.0	32.21	44.92	58.31	72.45	86.78	101.5	115.7	129.9	142.6	154.8
52.5	34.18	47.68	61.99	77.10	92.48	108.2	123.7	139.0	153.0	166.2
55.0	36.11	50.42	65.60	81.72	98.20	115.1	131.7	148.3	163.4	177.7
57.5	38.02	53.13	69.19	86.30	103.8	121.9	139.7	157.4	173.6	188.9
60.0	39.89	55.82	72.73	90.77	109.5	128.6	147.6	166.3	183.6	199.9
62.5	41.74	58.41	76.22	95.22	114.9	135.1	155.2	174.9	193.1	210.2
65.0	43.58	60.96	79.52	99.48	120.0	141.4	162.4	183.1	202.1	219.8
67.5	45.28	63.42	82.79	103.6	125.1	147.3	169.2	190.7	210.7	229.0
70.0	46.98	65.71	85.87	107.5	129.8	152.9	175.6	197.9	218.4	237.4
72.5	48.60	68.01	88.80	111.0	134.2	158.0	181.5	204.6	225.6	244.9
75.0	50.12	70.02	91.50	114.4	138.2	162.7	186.7	210.4	231.8	250.9
77.5	51.49	71.92	93.90	117.3	141.8	166.7	191.4	215.2	236.9	256.3
80.0	52.72	73.54	96.00	119.9	144.8	170.2	195.2	219.2	241.1	260.6
82.5	53.79	75.00	97.75	122.0	147.3	173.0	198.2	222.3	244.3	263.6
85.0	54.61	76.02	99.10	123.6	149.1	174.8	200.2	224.4	246.0	265.5
87.5	55.17	76.75	99.97	124.5	150.0	175.8	201.1	225.3	247.0	265.9
90.0	55.40	77.01	100.2	124.7	150.1	175.7	201.0	224.7	246.3	265.0
92.5	55.28	76.74	99.81	124.0	149.2	174.5	199.3	222.7	244.0	262.4
95.0	54.82	75.98	98.67	122.5	147.1	171.9	196.2	219.1	240.1	258.2
97.5	53.95	74.61	96.81	120.0	144.1	168.0	191.6	213.9	234.5	252.2
100.0	52.78	72.82	94.35	116.7	140.0	162.9	185.7	207.2	227.1	244.1
102.5	51.32	70.67	91.36	112.7	135.0	156.9	178.9	199.2	218.5	234.7
105.0	49.55	68.21	87.96	108.3	129.5	150.3	171.1	190.6	208.7	224.4
107.5	47.57	65.45	84.29	103.6	123.6	143.2	163.1	181.2	198.5	213.2
110.0	45.45	62.39	80.37	98.66	117.5	136.0	154.6	171.8	188.1	201.9
112.5	43.21	59.25	76.28	93.53	111.2	128.7	146.1	162.2	177.5	190.5
115.0	40.96	56.08	72.04	88.25	104.9	121.1	137.4	152.6	167.1	179.3
117.5	38.60	52.76	67.74	82.85	98.46	113.6	128.8	142.8	156.3	167.9
120.0	36.34	49.57	63.54	77.56	92.04	106.1	120.3	133.2	145.7	156.5
122.5	34.10	46.45	59.46	72.46	85.80	98.77	111.7	123.7	135.3	145.1
125.0	32.00	43.45	55.48	67.46	79.84	91.63	103.5	114.5	125.1	134.1
127.5	29.90	40.52	51.69	62.76	74.05	84.89	95.68	105.7	115.3	123.5
130.0	27.95	37.77	48.07	58.25	68.63	78.50	88.33	97.36	106.1	113.4
132.5	26.12	35.17	44.68	54.04	63.55	72.50	81.50	89.62	97.53	104.1
135.0	24.46	32.76	41.49	50.08	58.79	66.96	75.07	82.39	89.42	95.38
137.5	22.73	30.33	38.35	46.21	54.15	61.61	68.96	75.52	81.80	87.07
140.0	21.18	28.09	35.44	42.64	49.90	56.66	63.30	69.20	74.89	79.63
142.5	19.74	25.99	32.67	39.23	45.83	51.99	57.96	63.28	68.40	72.57
145.0	18.34	23.98	30.02	36.00	41.99	47.57	52.98	57.78	62.34	66.11
147.5	17.02	22.06	27.49	32.85	38.33	43.32	48.25	52.55	56.67	59.96
150.0	15.75	20.20	25.05	29.82	34.73	39.22	43.70	47.53	51.25	54.18
152.5	14.54	18.42	22.69	26.94	31.28	35.29	39.29	42.71	46.01	48.64
155.0	13.37	16.72	20.42	24.10	27.92	31.44	35.00	38.01	40.97	43.28
157.5	12.17	15.07	18.25	21.39	24.71	27.72	30.82	33.44	36.03	38.05
160.0	10.79	13.26	16.05	18.79	21.59	24.16	26.79	29.01	31.21	32.95
162.5	9.185	11.22	13.64	16.00	18.55	20.72	22.92	24.76	26.62	28.03
165.0	7.437	9.086	11.04	13.05	15.28	17.27	19.26	20.70	22.22	23.34
167.5	5.448	7.010	8.528	10.02	11.85	13.59	15.46	16.89	18.15	18.98
170.0	3.540	4.810	6.197	7.304	8.628	9.915	11.37	12.83	14.26	15.04
172.5	1.987	2.800	3.743	4.681	5.777	6.661	7.768	8.798	9.990	11.04
175.0	0.8566	1.146	1.507	1.838	2.284	2.613	3.090	3.427	4.066	5.067
177.5	0.1936	0.2911	0.3074	0.4085	0.4322	0.5097	0.5288	0.4889	0.5631	0.6376
180.0	0.0317	0.0453	0.0362	0.0498	0.0362	0.0453	0.0362	0.0498	0.0407	0.0588

C Range: 0 - 360DEG
C Interval: 5.0DEG
Test Speed: HIGH
Temperature: 25DEG
Operators: luominxian
Test Date: 2017-12-12

γ Range: 0 - 180DEG
 γ Interval: 0.5DEG
Test System: EVERFINE GO-2000A_V1 SYSTEM V2.0.272
Humidity: 70%
Test Distance: 8.425m [K=1.0000]
Remarks:

Photometric Data Table [cd]

G/C	250.0	255.0	260.0	265.0	270.0	275.0	280.0	285.0	290.0	295.0
0.0	0.1676	0.1584	0.1676	0.1630	0.1812	0.1947	0.2355	0.2218	0.2943	0.2806
2.5	1.867	2.097	2.099	2.260	2.200	2.332	2.219	2.296	2.102	2.133
5.0	7.161	7.619	7.714	8.013	7.934	8.063	7.854	7.860	7.465	7.308
7.5	11.93	12.41	12.59	12.89	12.85	12.98	12.75	12.65	12.25	11.98
10.0	16.56	17.33	17.67	18.08	18.08	18.18	17.83	17.62	16.95	16.42
12.5	22.15	23.22	23.77	24.37	24.36	24.44	23.94	23.55	22.61	21.77
15.0	28.55	29.94	30.70	31.46	31.50	31.56	30.89	30.35	29.07	27.91
17.5	35.57	37.32	38.28	39.24	39.30	39.33	38.52	37.76	36.15	34.60
20.0	43.12	45.22	46.43	47.54	47.65	47.67	46.71	45.72	43.77	41.80
22.5	51.10	53.53	54.99	56.30	56.43	56.47	55.34	54.11	51.81	49.33
25.0	59.49	62.30	64.04	65.49	65.71	65.70	64.40	62.91	60.20	57.25
27.5	68.27	71.54	73.58	75.15	75.33	75.31	73.82	72.02	68.88	65.46
30.0	77.37	81.10	83.44	85.18	85.48	85.29	83.65	81.54	77.93	73.99
32.5	86.95	91.11	93.82	95.78	96.13	95.83	93.83	91.49	87.39	82.85
35.0	96.86	101.6	104.6	106.9	107.2	106.8	104.6	101.8	97.08	91.94
37.5	107.3	112.6	116.0	118.5	118.8	118.4	115.9	112.6	107.3	101.5
40.0	118.1	123.9	127.8	130.5	130.9	130.4	127.6	123.8	117.7	111.2
42.5	129.3	135.7	140.5	143.1	144.4	142.8	140.2	135.3	128.7	121.4
45.0	141.6	147.9	153.5	156.0	157.0	155.8	152.8	147.2	140.3	131.7
47.5	153.6	160.6	166.8	169.5	170.9	169.1	165.9	159.6	152.2	142.4
50.0	165.7	173.4	180.0	183.1	184.6	182.7	179.1	172.1	164.1	153.1
52.5	178.0	186.4	193.6	196.9	198.7	196.4	192.3	184.9	176.0	164.1
55.0	190.4	199.4	207.3	210.7	212.9	210.2	206.1	197.6	188.0	175.0
57.5	202.4	212.3	220.6	224.2	226.1	223.6	218.9	210.2	199.8	185.9
60.0	214.4	224.6	233.5	237.5	239.3	236.7	232.1	222.4	211.5	196.7
62.5	225.3	236.3	245.6	249.8	252.2	249.0	243.9	234.0	222.2	206.8
65.0	235.7	247.2	256.8	261.3	263.6	260.5	255.1	244.7	232.8	216.5
67.5	245.4	257.1	267.1	273.8	274.6	271.8	265.2	254.5	242.0	225.3
70.0	254.3	265.9	276.4	282.0	283.3	280.8	274.5	263.3	250.7	233.3
72.5	262.0	275.2	284.3	289.9	291.4	288.7	282.0	272.0	258.3	240.7
75.0	268.6	281.5	290.9	296.4	298.0	294.9	288.7	278.8	264.6	246.9
77.5	273.9	286.8	296.1	302.1	303.2	300.6	293.9	283.8	269.8	252.1
80.0	278.0	291.0	300.4	306.3	307.2	304.7	297.8	287.8	273.7	256.4
82.5	281.0	294.0	303.2	308.7	310.1	307.6	301.1	290.7	277.1	259.4
85.0	282.8	295.4	304.8	310.3	311.7	309.1	302.4	292.2	278.8	261.2
87.5	283.0	295.7	304.7	310.1	311.5	308.8	302.5	292.8	278.9	261.7
90.0	281.9	294.4	303.9	308.9	310.1	307.7	301.5	291.6	278.5	260.8
92.5	279.3	291.7	301.1	305.8	307.4	304.7	298.6	288.7	275.7	258.6
95.0	274.9	286.8	296.0	300.8	302.4	300.0	293.8	284.2	271.2	254.9
97.5	267.3	280.4	289.4	294.0	295.5	293.0	287.1	277.9	264.5	248.9
100.0	259.0	271.4	280.6	285.2	286.7	284.3	278.6	269.5	256.4	241.5
102.5	248.9	261.2	268.9	274.0	276.2	273.7	267.1	259.3	246.8	232.5
105.0	237.7	249.1	256.5	262.1	262.5	261.4	255.2	247.8	236.0	222.1
107.5	226.1	236.9	243.7	249.0	249.5	248.5	242.6	235.8	224.3	211.4
110.0	214.1	224.5	230.8	235.8	236.2	235.1	229.7	223.2	212.6	200.3
112.5	202.2	212.0	222.6	222.9	222.9	222.2	217.0	210.9	200.8	189.1
115.0	190.3	199.4	205.2	209.3	210.0	208.8	204.3	198.4	189.1	177.9
117.5	178.2	187.0	192.4	196.2	196.9	196.0	191.6	185.9	177.1	166.7
120.0	166.2	174.3	179.4	183.2	183.7	183.1	178.8	173.6	165.3	155.5
122.5	154.2	161.8	166.5	170.0	170.4	169.7	165.9	161.1	153.3	144.2
125.0	142.4	149.2	153.6	157.2	157.4	156.8	153.2	148.7	141.7	133.4
127.5	131.0	136.9	141.3	144.3	144.7	144.2	140.9	136.0	130.5	122.9
130.0	120.3	125.3	129.5	131.5	132.5	131.4	129.1	125.0	119.9	113.0
132.5	110.2	114.6	118.3	120.1	121.0	120.1	118.1	114.4	109.8	103.7
135.0	100.8	104.7	108.0	109.6	110.5	109.6	107.8	104.4	100.4	95.00
137.5	92.06	95.44	98.42	99.91	100.7	99.85	98.25	95.31	91.75	86.87
140.0	83.92	86.99	89.65	90.83	91.52	90.82	89.50	86.81	83.65	79.39
142.5	76.45	79.15	81.50	82.54	83.13	82.53	81.37	78.95	76.20	72.35
145.0	69.55	71.94	74.01	74.92	75.48	74.91	73.90	71.77	69.31	65.87
147.5	63.08	65.20	67.03	67.85	68.37	67.83	66.96	65.06	62.83	59.79
150.0	56.94	58.83	60.46	61.20	61.64	61.16	60.39	58.67	56.78	53.97
152.5	51.10	52.78	54.20	54.85	55.24	54.79	54.12	52.62	50.92	48.40
155.0	45.43	46.92	48.21	48.74	49.11	48.71	48.11	46.77	45.26	43.06
157.5	39.97	41.25	42.40	42.85	43.16	42.79	42.30	41.07	39.79	37.80
160.0	34.62	35.69	36.68	37.06	37.38	37.01	36.58	35.53	34.42	32.71
162.5	29.43	30.31	31.19	31.44	31.74	31.44	31.09	30.15	29.26	27.79
165.0	24.48	25.16	25.90	26.10	26.33	26.05	25.79	25.01	24.30	23.11
167.5	19.87	20.35	20.92	21.05	21.26	21.02	20.82	20.22	19.68	18.73
170.0	15.66	15.98	16.40	16.48	16.64	16.43	16.31	15.85	15.48	14.82
172.5	11.98	12.20	12.46	12.51	12.60	12.45	12.38	12.08	11.86	11.41
175.0	7.003	7.907	8.640	8.513	8.665	8.391	8.273	7.540	6.964	5.497
177.5	0.6237	0.6243	0.5909	0.8810	0.9220	0.8818	0.8564	0.7889	0.7411	0.6701
180.0	0.0498	0.0541	0.0543	0.0543	0.0498	0.0588	0.0543	0.0770	0.0724	0.0905

C Range: 0 - 360DEG
 C Interval: 5.0DEG
 Test Speed: HIGH
 Temperature: 25DEG
 Operators: luominxian
 Test Date: 2017-12-12

γ Range: 0 - 180DEG
 γ Interval: 0.5DEG
 Test System: EVERFINE GO-2000A_V1 SYSTEM V2.0.272
 Humidity: 70%
 Test Distance: 8.425m [K=1.0000]
 Remarks:

Photometric Data Table [cd]

G/C	300.0	305.0	310.0	315.0	320.0	325.0	330.0	335.0	340.0	345.0
0.0	0.3581	0.3479	0.4302	0.4072	0.4890	0.4571	0.5210	0.4933	0.5297	0.4888
2.5	1.919	1.879	1.623	1.515	1.265	1.115	0.8580	0.7184	0.6248	0.5248
5.0	6.788	6.443	5.686	5.185	4.379	3.721	2.882	2.280	1.581	0.9974
7.5	11.41	10.95	10.13	9.351	8.203	7.156	5.777	4.507	3.097	2.028
10.0	15.54	14.76	13.67	12.72	11.55	10.39	8.740	7.073	5.092	3.203
12.5	20.44	19.22	17.63	16.18	14.50	12.94	11.27	9.450	7.144	4.696
15.0	26.11	24.38	22.21	20.16	17.84	15.70	13.47	11.45	9.047	6.252
17.5	32.32	30.05	27.27	24.60	21.60	18.77	15.87	13.27	10.73	7.723
20.0	38.95	36.14	32.72	29.41	25.69	22.13	18.51	15.22	12.11	9.094
22.5	46.02	42.60	38.54	34.55	30.07	25.75	21.36	17.33	13.56	10.27
25.0	53.36	49.39	44.63	39.91	34.68	29.60	24.43	19.59	15.08	11.25
27.5	61.02	56.35	50.92	45.48	39.49	33.64	27.62	21.98	16.68	12.18
30.0	68.94	63.60	57.43	51.21	44.43	37.73	30.93	24.47	18.38	13.16
32.5	77.05	71.04	64.02	57.07	49.50	41.98	34.33	27.04	20.14	14.18
35.0	85.49	78.62	70.83	62.99	54.57	46.34	37.80	29.64	21.93	15.25
37.5	94.18	86.44	77.77	69.08	59.81	50.62	41.22	32.31	23.78	16.32
40.0	103.1	94.49	84.87	75.22	65.00	54.91	44.71	34.97	25.63	17.43
42.5	112.3	102.7	92.08	81.42	70.25	59.22	48.20	37.61	27.53	18.56
45.0	121.6	111.0	99.37	87.67	75.53	63.61	51.68	40.27	29.40	19.68
47.5	131.3	119.7	106.9	94.15	80.91	68.00	55.17	42.95	31.30	20.90
50.0	141.0	128.2	114.3	100.5	86.22	72.32	58.61	45.55	33.13	21.97
52.5	150.8	136.9	121.8	106.9	91.55	76.64	62.01	48.13	34.95	23.09
55.0	160.7	145.7	129.4	113.3	96.82	80.92	65.41	50.71	36.76	24.20
57.5	170.6	154.3	136.9	119.6	102.1	85.12	68.72	53.20	38.54	25.27
60.0	180.3	162.9	144.4	125.9	107.3	89.27	71.95	55.64	40.28	26.37
62.5	189.6	171.2	151.5	132.0	112.3	93.34	75.10	58.03	41.97	27.45
65.0	198.5	179.1	158.5	137.8	117.1	97.25	78.20	60.34	43.62	28.48
67.5	206.7	186.7	165.1	143.3	121.7	101.0	81.21	62.60	45.23	29.50
70.0	214.4	193.5	171.2	148.8	126.2	104.6	84.04	64.77	46.76	30.45
72.5	221.1	199.8	176.8	153.7	130.4	108.1	86.78	66.80	48.23	31.42
75.0	227.3	205.5	182.0	158.2	134.2	111.3	89.30	68.71	49.64	32.31
77.5	232.4	210.5	186.3	162.2	137.7	114.2	91.58	70.52	50.93	33.13
80.0	236.6	214.4	190.2	165.4	140.6	116.7	93.67	72.11	52.09	33.91
82.5	239.7	217.4	193.2	168.2	143.1	118.7	95.42	73.52	53.12	34.56
85.0	241.6	219.4	195.1	170.2	145.0	120.3	96.78	74.59	53.95	35.11
87.5	242.4	220.2	196.3	171.3	146.0	121.4	97.78	75.37	54.55	35.51
90.0	241.7	219.9	196.2	171.4	146.4	121.8	98.19	75.74	54.87	35.75
92.5	239.6	218.2	195.0	170.6	145.9	121.4	97.94	75.65	54.83	35.78
95.0	236.2	215.2	192.4	168.5	144.2	120.1	96.99	74.97	54.44	35.54
97.5	230.9	210.5	188.3	165.0	141.4	118.0	95.46	73.82	53.65	35.12
100.0	224.3	204.2	183.0	160.4	137.6	114.9	93.20	72.18	52.56	34.39
102.5	216.0	196.9	176.4	154.7	133.1	111.3	90.37	70.11	51.13	33.48
105.0	206.7	188.3	169.0	148.4	127.8	107.0	87.06	67.67	49.39	32.41
107.5	196.5	179.3	161.2	141.7	122.2	102.4	83.45	64.94	47.49	31.18
110.0	186.2	170.1	153.0	134.5	116.2	97.56	79.61	62.05	45.41	29.87
112.5	175.9	160.6	144.6	127.3	110.1	92.57	75.59	58.97	43.23	28.47
115.0	165.5	151.1	136.2	119.9	103.9	87.39	71.51	55.79	40.95	27.04
117.5	155.2	141.6	127.7	112.5	97.61	82.20	67.34	52.59	38.68	25.58
120.0	144.7	132.1	119.1	105.2	91.35	77.06	63.18	49.45	36.38	24.15
122.5	134.4	122.8	110.9	97.99	85.19	72.01	59.17	46.31	34.18	22.74
125.0	124.3	113.7	102.9	91.09	79.32	67.12	55.26	43.33	32.01	21.39
127.5	114.6	105.0	95.18	84.45	73.72	62.42	51.51	40.46	29.94	20.11
130.0	105.6	96.86	87.90	78.11	68.32	57.98	47.92	37.70	28.01	18.92
132.5	96.98	89.21	81.10	72.22	63.24	53.81	44.53	35.10	26.15	17.85
135.0	89.08	82.06	74.79	66.69	58.53	49.87	41.34	32.67	24.47	16.87
137.5	81.64	75.28	68.70	61.36	53.91	46.01	38.19	30.26	22.72	15.82
140.0	74.65	68.95	63.04	56.39	49.67	42.42	35.28	28.00	21.16	14.91
142.5	68.14	63.09	57.75	51.74	45.62	39.03	32.51	25.89	19.69	14.07
145.0	62.14	57.55	52.75	47.30	41.77	35.79	29.87	23.88	18.29	13.28
147.5	56.43	52.30	48.01	43.08	38.09	32.66	27.31	21.95	16.97	12.52
150.0	51.02	47.27	43.45	38.97	34.51	29.63	24.87	20.07	15.69	11.79
152.5	45.76	42.45	39.00	35.02	31.05	26.70	22.49	18.29	14.48	11.08
155.0	40.70	37.73	34.70	31.19	27.68	23.90	20.22	16.58	13.33	10.40
157.5	35.76	33.16	30.55	27.44	24.44	21.16	18.06	14.97	12.22	9.680
160.0	30.98	28.73	26.50	23.87	21.32	18.58	16.00	13.45	11.16	8.801
162.5	26.34	24.47	22.63	20.45	18.40	16.15	14.09	12.00	10.12	7.427
165.0	21.97	20.43	18.99	17.25	15.65	13.89	12.29	10.65	8.792	5.474
167.5	17.90	16.72	15.65	14.34	13.17	11.84	10.63	9.095	5.895	3.366
170.0	14.22	13.39	12.67	11.74	10.91	9.895	7.962	4.910	3.209	1.849
172.5	11.02	10.49	9.991	9.167	6.927	4.428	3.225	2.220	1.530	0.9331
175.0	4.603	3.597	2.999	2.323	1.900	1.452	1.116	0.8165	0.5726	0.4438
177.5	0.5880	0.4729	0.4609	0.4223	0.3210	0.3222	0.2488	0.2898	0.3032	0.3305
180.0	0.0860	0.1041	0.1041	0.1403	0.1584	0.1902	0.2037	0.2580	0.2807	0.3124

C Range: 0 - 360DEG
 C Interval: 5.0DEG
 Test Speed: HIGH
 Temperature: 25DEG
 Operators: luominxian
 Test Date: 2017-12-12

γ Range: 0 - 180DEG
 γ Interval: 0.5DEG
 Test System: EVERFINE GO-2000A_V1 SYSTEM V2.0.272
 Humidity: 70%
 Test Distance: 8.425m [K=1.0000]
 Remarks:

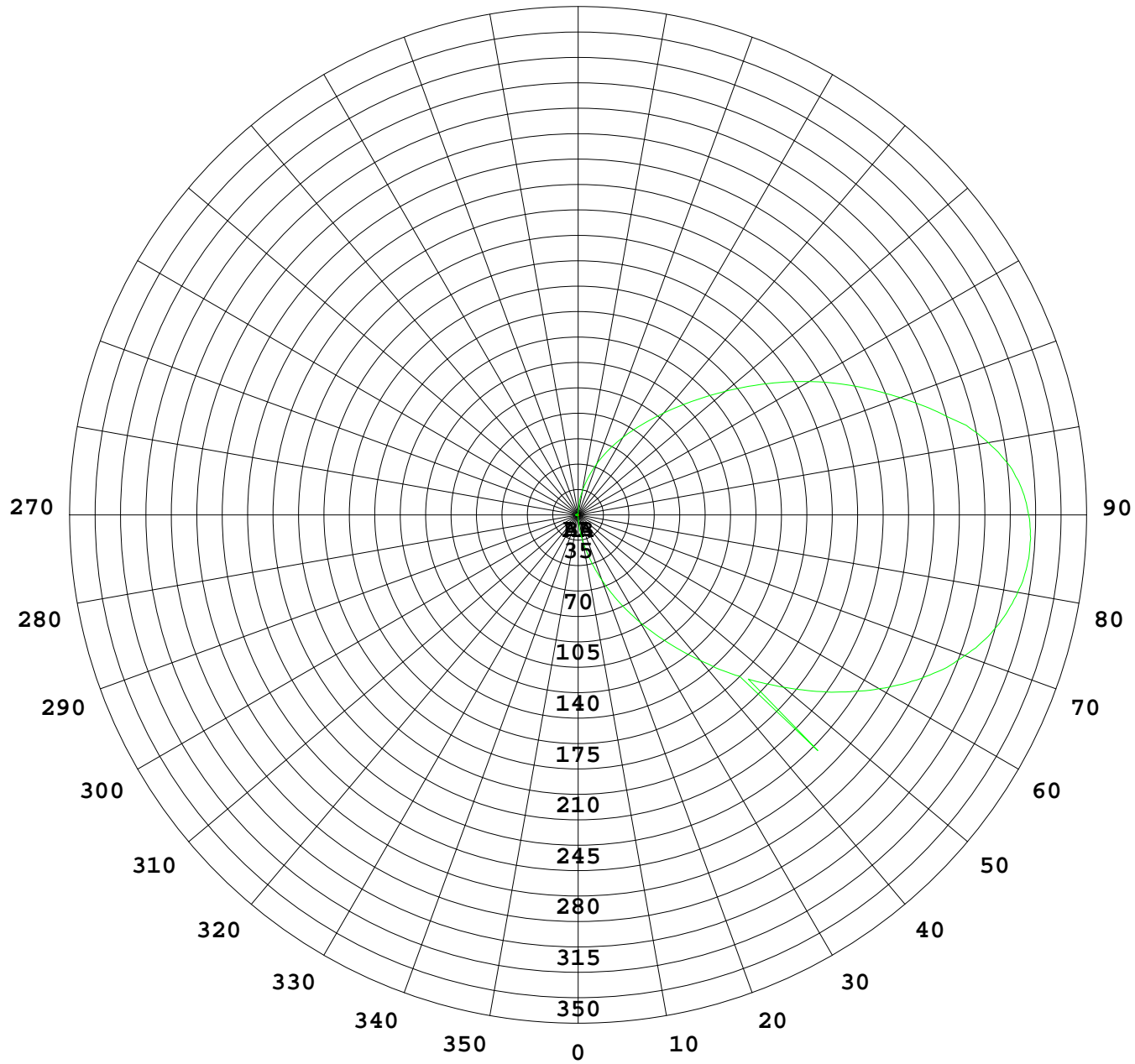
Photometric Data Table [cd]

G/C	350.0	355.0
0.0	0.5117	0.4572
2.5	0.5388	0.4750
5.0	0.6342	0.4887
7.5	1.020	0.5026
10.0	1.681	0.5971
12.5	2.424	0.7594
15.0	3.219	1.008
17.5	4.202	1.338
20.0	5.167	1.683
22.5	6.181	2.045
25.0	7.088	2.389
27.5	7.939	2.737
30.0	8.678	3.136
32.5	9.271	3.530
35.0	9.794	3.928
37.5	10.28	4.334
40.0	10.76	4.714
42.5	11.21	5.055
45.0	11.71	5.376
47.5	12.25	5.675
50.0	12.67	5.875
52.5	13.15	6.034
55.0	13.63	6.125
57.5	14.11	6.193
60.0	14.58	6.229
62.5	15.07	6.252
65.0	15.53	6.283
67.5	16.00	6.301
70.0	16.46	6.326
72.5	16.91	6.351
75.0	17.35	6.378
77.5	17.77	6.410
80.0	18.13	6.451
82.5	18.46	6.491
85.0	18.74	6.518
87.5	18.96	6.541
90.0	19.11	6.595
92.5	19.16	6.659
95.0	19.11	6.749
97.5	18.92	6.799
100.0	18.61	6.817
102.5	18.18	6.786
105.0	17.65	6.737
107.5	17.08	6.664
110.0	16.44	6.600
112.5	15.75	6.519
115.0	15.07	6.464
117.5	14.36	6.397
120.0	13.70	6.361
122.5	13.06	6.338
125.0	12.47	6.310
127.5	11.94	6.283
130.0	11.46	6.225
132.5	11.09	6.152
135.0	10.78	6.039
137.5	10.30	5.466
140.0	9.945	5.040
142.5	9.628	4.602
145.0	9.293	4.138
147.5	8.925	3.678
150.0	8.472	3.224
152.5	7.885	2.791
155.0	7.114	2.355
157.5	6.249	1.862
160.0	5.147	1.377
162.5	3.850	0.9256
165.0	2.558	0.5843
167.5	1.464	0.4442
170.0	0.8822	0.3895
172.5	0.4888	0.3790
175.0	0.3301	0.3725
177.5	0.3174	0.3667
180.0	0.3124	0.3576

C Range: 0 - 360DEG
 C Interval: 5.0DEG
 Test Speed: HIGH
 Temperature: 25DEG
 Operators: luominxian
 Test Date: 2017-12-12

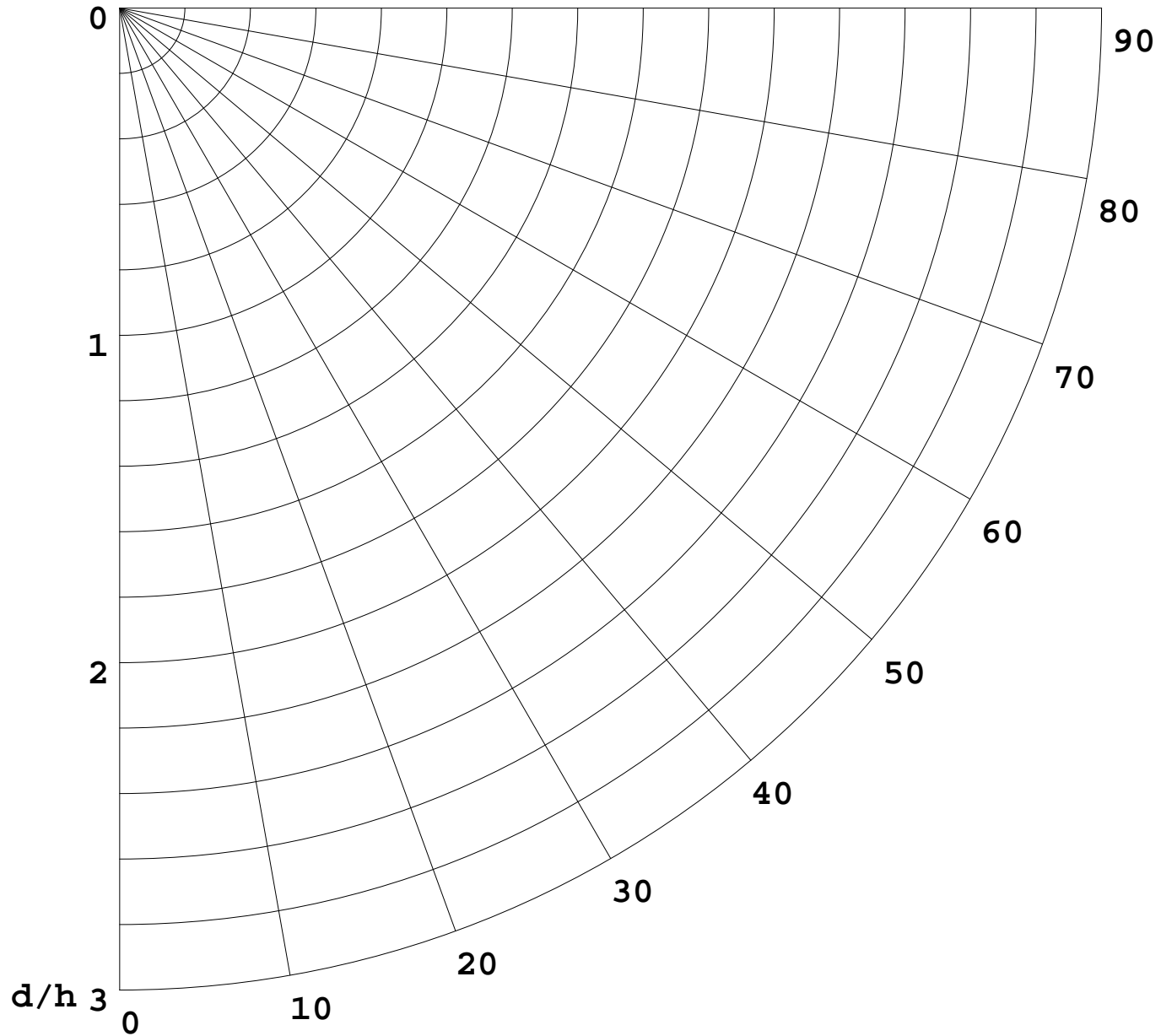
γ Range: 0 - 180DEG
 γ Interval: 0.5DEG
 Test System: EVERFINE GO-2000A_V1 SYSTEM V2.0.272
 Humidity: 70%
 Test Distance: 8.425m [K=1.0000]
 Remarks:

I(cd)



1000 lm

$\kappa = 1$



F = 5000 lm
K = 0.7
Hcc = 0.0 m
Hfc = 0.0 m
Eave = 100 lx

	Pcc	Pw	Pfc
—————	70	50	30
—————	50	30	20

