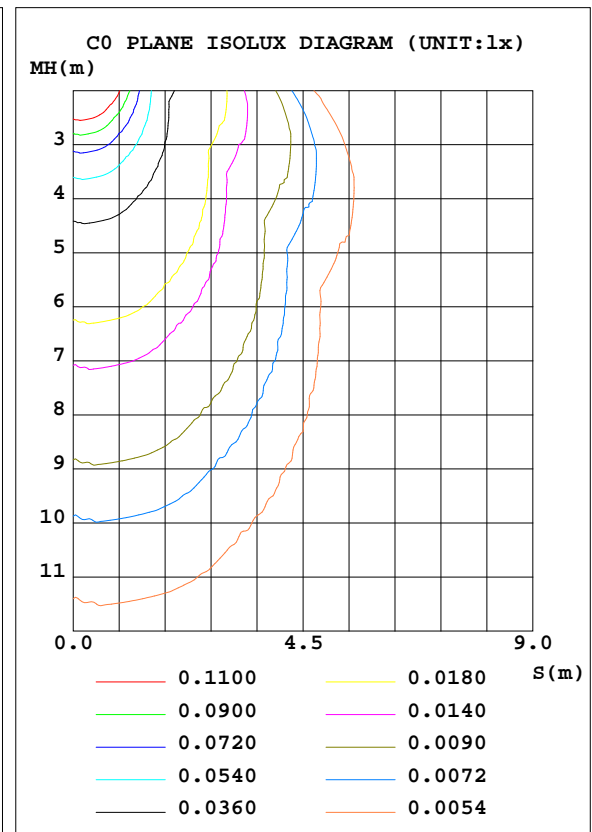
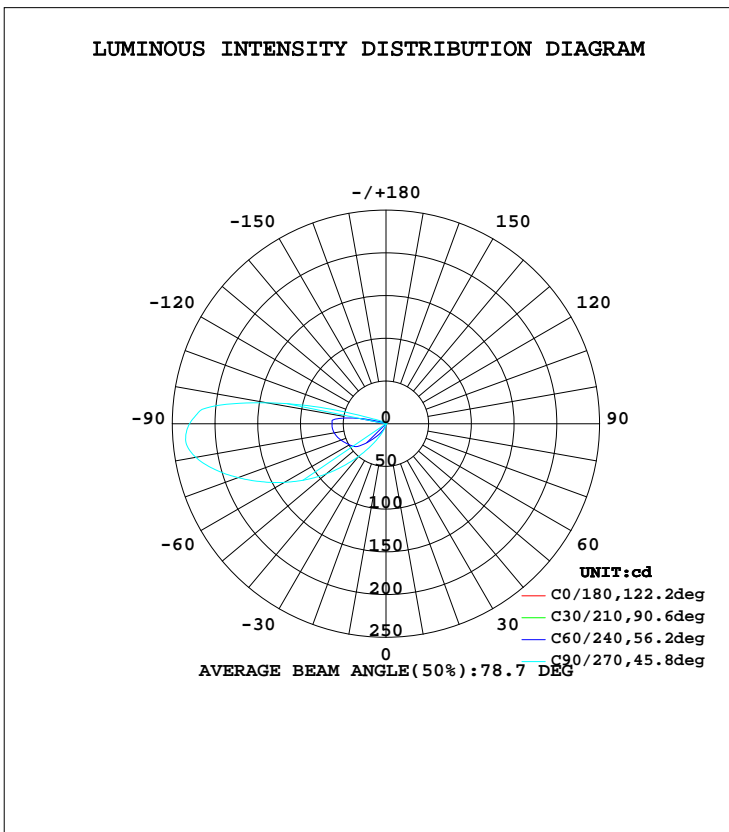


LUMINAIRE PHOTOMETRIC TEST REPORT

Test:U:120.9V I:0.1101A P:12.00W PF:0.9018 Lamp Flux:167.942x1 lm		
NAME:	TYPE:	WEIGHT:
DIM.:	SPEC.:	SERIAL No.:20171208-01
MFR.: target	SUR.:MM	PROTECTION ANGLE:

DATA OF LAMP		PHOTOMETRIC DATA Eff: 13.99 lm/W			
MODEL	KW061010L30DZBZ-01-4.1	Imax(cd)	235.2	S/MH(C0/180)	1.14
NOMINAL POWER(W)	12	LOR(%)	100.0	S/MH(C90/270)	0.37
RATED VOLTAGE(V)	120	TOTAL FLUX(lm)	167.94	η UP, DN(C0-180)	0.4, 0.4
NOMINAL FLUX(lm)	167.942	CIE CLASS	SEMI-D.	η UP, DN(C180-360)	26.5, 72.7
LAMPS INSIDE	1	η up(%)	26.9	CIBSE SHR NOM	0.00
TEST VOLTAGE(V)	120.9	η down(%)	73.1	CIBSE SHR MAX	1.00



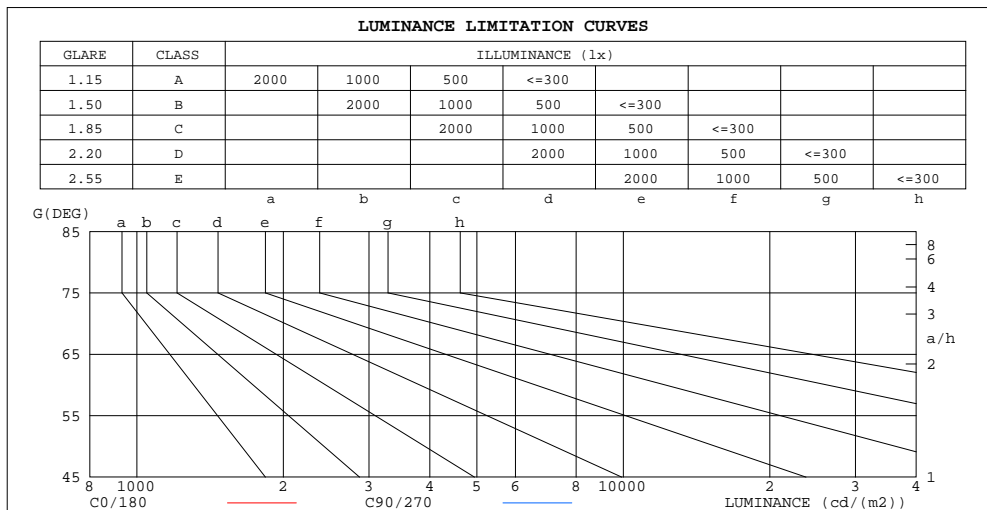
C Range: 0 - 360DEG
 C Interval: 5.0DEG
 Test Speed: HIGH
 Temperature:25DEG
 Operators:luominxian
 Test Date:2017-12-08

γ Range: 0 - 180DEG
 γ Interval: 0.5DEG
 Test System:EVERFINE GO-2000A_V1 SYSTEM V2.0.272
 Humidity:70%
 Test Distance:8.425m [K=1.0000]
 Remarks:

ZONAL FLUX DIAGRAM
AND LUMINANCE LIMITATION CURVES

ZONAL FLUX DIAGRAM:

γ	C0	C45	C90	C135	C180	C225	C270	C315	γ	Φ zone	Φ total	lum, lamp
5	0.7180	0.5293	0.5257	0.5522	0.6857	0.8190	0.9646	0.9044	0- 5	0.0173	0.0173	0.01,0.01
10	0.7134	0.4118	0.3894	0.4163	0.6513	1.050	1.748	1.253	5- 10	0.0553	0.0726	0.04,0.04
15	0.6819	0.3168	0.2900	0.3121	0.6074	1.660	3.830	2.167	10- 15	0.1219	0.1946	0.12,0.12
20	0.6338	0.2353	0.2082	0.2307	0.5522	2.720	7.512	3.670	15- 20	0.2629	0.4574	0.27,0.27
25	0.5797	0.1719	0.1541	0.1584	0.4980	4.105	13.07	5.670	20- 25	0.5249	0.9824	0.58,0.58
30	0.5251	0.1176	0.1042	0.1086	0.4301	5.369	21.37	7.834	25- 30	0.9520	1.934	1.15,1.15
35	0.4618	0.0724	0.0679	0.0678	0.3750	6.449	33.39	10.04	30- 35	1.606	3.541	2.11,2.11
40	0.3986	0.0452	0.0453	0.0407	0.3603	7.528	49.43	12.66	35- 40	2.573	6.114	3.64,3.64
45	0.4026	0.0181	0.0362	0.0362	0.3712	8.270	69.20	15.10	40- 45	3.920	10.03	5.97,5.97
50	0.4213	0.0181	0.0362	0.0362	0.3686	7.678	91.30	15.89	45- 50	5.614	15.65	9.32,9.32
55	0.4243	0.0182	0.0902	0.0588	0.3484	7.270	114.1	15.43	50- 55	7.508	23.16	13.8,13.8
60	0.4119	0.0317	0.2126	0.0816	0.2897	7.324	137.2	15.58	55- 60	9.455	32.61	19.4,19.4
65	0.3799	0.0453	0.3711	0.1178	0.2400	7.342	160.7	15.67	60- 65	11.37	43.98	26.2,26.2
70	0.3396	0.0498	0.5383	0.1585	0.1811	7.306	184.4	15.62	65- 70	13.20	57.18	34,34
75	0.2809	0.0679	0.6832	0.1992	0.1183	7.198	207.2	15.38	70- 75	14.85	72.03	42.9,42.9
80	0.2129	0.0724	0.8013	0.2310	0.0634	7.008	226.1	14.95	75- 80	16.22	88.25	52.5,52.5
85	0.1359	0.0724	0.8736	0.2490	0.0091	6.737	235.2	14.30	80- 85	17.12	105.4	62.7,62.7
90	0.0500	0.0724	0.9369	0.2490	0.0091	6.357	229.9	13.34	85- 90	17.42	122.8	73.1,73.1
95	0.0272	0.0679	0.9309	0.2490	0.0091	5.822	211.5	11.92	90- 95	17.12	139.9	83.3,83.3
100	0.0272	0.0679	0.9054	0.2490	0.0091	5.016	141.9	8.787	95-100	14.06	154.0	91.7,91.7
105	0.0226	0.0634	0.8288	0.2465	0.0091	4.590	65.49	6.420	100-105	8.044	162.0	96.5,96.5
110	0.0226	0.0634	0.7426	0.2206	0.0226	3.653	18.89	5.206	105-110	3.011	165.0	98.3,98.3
115	0.0136	0.0634	0.6249	0.2146	0.0272	2.433	10.18	3.678	110-115	1.297	166.3	99,99
120	0.0136	0.0634	0.5162	0.2037	0.0453	1.188	6.310	2.130	115-120	0.7767	167.1	99.5,99.5
125	0.0136	0.0634	0.4258	0.1738	0.0543	0.0645	3.740	0.6835	120-125	0.4500	167.6	99.8,99.8
130	0.0136	0.0634	0.3396	0.1609	0.0770	0.0498	1.607	0.0543	125-130	0.2144	167.8	99.9,99.9
135	0.0136	0.0634	0.2762	0.1573	0.0136	0.1413	0.3431	0.1129	130-135	0.0855	167.9	99.9,99.9
140	0.0181	0.0542	0.2310	0.1536	0.0136	0.0318	0.0136	0.0498	135-140	0.0392	167.9	100,100
145	0.0181	0.0271	0.1766	0.0996	0.0135	0.0136	0.0136	0.0136	140-145	0.0196	167.9	100,100
150	0.0181	0.0136	0.1313	0.0724	0.0091	0.0136	0.0136	0.0136	145-150	0.0129	167.9	100,100
155	0.0181	0.0136	0.0996	0.0318	0.0091	0.0091	0.0136	0.0136	150-155	0.0083	167.9	100,100
160	0.0181	0.0091	0.0681	0.0181	0.0091	0.0091	0.0136	0.0091	155-160	0.0053	167.9	100,100
165	0.0181	0.0091	0.0454	0.0181	0.0091	0.0091	0.0136	0.0091	160-165	0.0033	167.9	100,100
170	0.0136	0.0091	0.0317	0.0181	0.0045	0.0091	0.0136	0.0091	165-170	0.0021	167.9	100,100
175	0.0136	0.0091	0.0272	0.0136	0.0045	0.0091	0.0136	0.0136	170-175	0.0011	167.9	100,100
180	0.0136	0.0181	0.0091	0.0136	0.0136	0.0091	0.0136	0.0136	175-180	0.0004	167.9	100,100
DEG	LUMINOUS INTENSITY:cd MAX (Ii - Iavg)/Iavg (0-135) = 1771.0 %									UNIT:lm		



LUMINANCE cd/(m2)		
G(DEG)	C0/180	C90/270
85	92	590
80	72	271
75	64	155
70	58	93
65	53	52
60	48	25
55	44	9
50	39	3
45	33	3

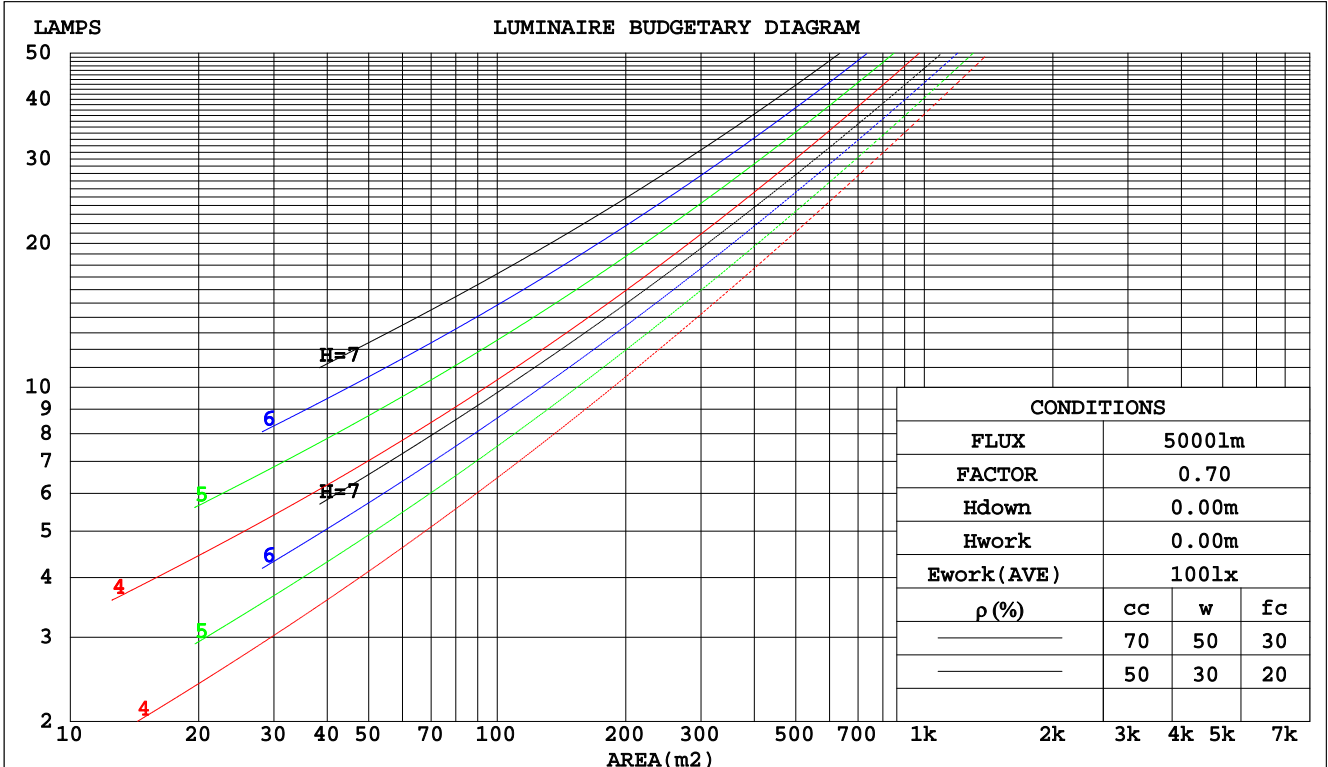
C Range: 0 - 360DEG
C Interval: 5.0DEG
Test Speed: HIGH
Temperature:25DEG
Operators:luominxian
Test Date:2017-12-08

γ Range: 0 - 180DEG
γ Interval: 0.5DEG
Test System:EVERFINE GO-2000A_V1 SYSTEM V2.0.272
Humidity:70%
Test Distance:8.425m [K=1.0000]
Remarks:

CU AND LUMINAIRE BUDGETARY ESTIMATE DIAGRAM

Test:U:120.9V I:0.1101A P:12.00W PF:0.9018 Lamp Flux:167.942x1 lm		
NAME:	TYPE:	WEIGHT:
DIM.:	SPEC.:	SERIAL No.:20171208-01
MFR.: target	SUR.:MM	PROTECTION ANGLE:

pcc	80%			70%			50%			30%			10%			0
pw	50%	30%	10%	50%	30%	10%	50%	30%	10%	50%	30%	10%	50%	30%	10%	0
pfc	20%			20%			20%			20%			20%			0
RCR	RCR:Room Cavity Ratio						Coefficients of Utilization(CU)									
0.0	1.13	1.13	1.13	1.07	1.07	1.07	.96	.96	.96	.86	.86	.86	.77	.77	.77	.73
1.0	.83	.75	.68	.78	.71	.64	.69	.63	.57	.60	.55	.50	.52	.48	.44	.40
2.0	.67	.56	.47	.63	.53	.44	.54	.46	.39	.47	.40	.34	.39	.34	.29	.25
3.0	.56	.44	.35	.52	.41	.33	.45	.36	.29	.38	.31	.25	.32	.26	.21	.17
4.0	.47	.36	.27	.44	.33	.25	.38	.29	.22	.32	.25	.19	.27	.21	.15	.12
5.0	.41	.30	.21	.38	.28	.20	.33	.24	.17	.28	.20	.14	.23	.17	.12	.09
6.0	.36	.25	.17	.34	.24	.16	.29	.20	.14	.25	.17	.12	.20	.14	.09	.06
7.0	.32	.22	.15	.30	.20	.14	.26	.18	.12	.22	.15	.10	.18	.12	.08	.05
8.0	.29	.19	.12	.27	.18	.11	.23	.15	.10	.20	.13	.08	.17	.11	.06	.04
9.0	.26	.17	.11	.24	.16	.10	.21	.14	.08	.18	.12	.07	.15	.10	.05	.03
10.0	.24	.15	.09	.22	.14	.08	.19	.12	.07	.17	.10	.06	.14	.09	.05	.02



C Range: 0 - 360DEG
 C Interval: 5.0DEG
 Test Speed: HIGH
 Temperature:25DEG
 Operators:luominxian
 Test Date:2017-12-08

γ Range: 0 - 180DEG
 γ Interval: 0.5DEG
 Test System:EVERFINE GO-2000A_V1 SYSTEM V2.0.272
 Humidity:70%
 Test Distance:8.425m [K=1.0000]
 Remarks:

WEC AND CCEC

Test:U:120.9V I:0.1101A P:12.00W PF:0.9018 Lamp Flux:167.942x1 lm		
NAME:	TYPE:	WEIGHT:
DIM.:	SPEC.:	SERIAL No.:20171208-01
MFR.: target	SUR.:MM	PROTECTION ANGLE:

ρcc	80%			70%			50%			30%			10%			0
ρw	50%	30%	10%	50%	30%	10%	50%	30%	10%	50%	30%	10%	50%	30%	10%	0
ρfc	20%			20%			20%			20%			20%			0
RCR	RCR:Room Cavity Ratio						Wall Exitance Coefficients(WEC)									
0.0																
1.0	.582	.331	.105	.566	.323	.103	.536	.308	.098	.509	.294	.094	.484	.280	.090	
2.0	.455	.249	.076	.440	.243	.075	.413	.230	.071	.388	.218	.068	.365	.206	.065	
3.0	.380	.202	.061	.367	.196	.059	.342	.185	.056	.319	.175	.054	.298	.165	.051	
4.0	.328	.170	.050	.316	.165	.049	.293	.155	.046	.272	.146	.044	.253	.137	.042	
5.0	.289	.147	.043	.278	.143	.042	.257	.134	.039	.238	.126	.037	.220	.118	.035	
6.0	.258	.129	.037	.248	.125	.036	.229	.117	.034	.212	.110	.032	.195	.103	.031	
7.0	.233	.115	.033	.224	.112	.032	.207	.105	.030	.191	.098	.028	.176	.091	.027	
8.0	.213	.104	.029	.205	.101	.028	.189	.094	.027	.174	.088	.025	.160	.082	.024	
9.0	.196	.095	.026	.188	.092	.026	.174	.086	.024	.160	.080	.023	.147	.075	.022	
10.0	.181	.087	.024	.174	.084	.023	.161	.079	.022	.148	.073	.021	.136	.068	.020	

ρcc	80%			70%			50%			30%			10%			0
ρw	50%	30%	10%	50%	30%	10%	50%	30%	10%	50%	30%	10%	50%	30%	10%	0
ρfc	20%			20%			20%			20%			20%			0
RCR	RCR:Room Cavity Ratio						Ceiling Cavity Exitance Coefficients(CCEC)									
0.0	.395	.395	.395	.338	.338	.338	.231	.231	.231	.132	.132	.132	.042	.042	.042	
1.0	.406	.360	.319	.347	.309	.275	.237	.213	.190	.137	.123	.111	.044	.040	.036	
2.0	.402	.339	.286	.344	.292	.247	.236	.202	.173	.136	.117	.101	.044	.038	.033	
3.0	.395	.324	.268	.338	.280	.232	.232	.194	.163	.134	.113	.096	.043	.037	.031	
4.0	.386	.313	.257	.331	.270	.223	.228	.188	.157	.132	.110	.093	.042	.036	.031	
5.0	.377	.304	.249	.324	.263	.217	.223	.183	.153	.129	.108	.091	.042	.035	.030	
6.0	.369	.296	.244	.317	.256	.213	.219	.179	.150	.127	.106	.089	.041	.035	.030	
7.0	.360	.290	.240	.310	.251	.209	.214	.176	.148	.124	.104	.088	.040	.034	.029	
8.0	.352	.284	.237	.303	.247	.207	.210	.173	.147	.122	.102	.088	.040	.033	.029	
9.0	.345	.280	.235	.297	.243	.205	.206	.171	.146	.120	.101	.087	.039	.033	.029	
10.0	.338	.275	.233	.292	.239	.204	.202	.168	.145	.118	.099	.086	.038	.033	.029	

C Range: 0 - 360DEG
 C Interval: 5.0DEG
 Test Speed: HIGH
 Temperature:25DEG
 Operators:luominxian
 Test Date:2017-12-08

γ Range: 0 - 180DEG
 γ Interval: 0.5DEG
 Test System:EVERFINE GO-2000A_V1 SYSTEM V2.0.272
 Humidity:70%
 Test Distance:8.425m [K=1.0000]
 Remarks:

Uncorrected UGR Table

Test:U:120.9V I:0.1101A P:12.00W PF:0.9018 Lamp Flux:167.942x1 lm										
NAME:					TYPE:			WEIGHT:		
DIM.:					SPEC.:			SERIAL No.:20171208-01		
MFR.: target					SUR.:MM			PROTECTION ANGLE:		
ceiling/cavity	0.7	0.7	0.5	0.5	0.3	0.7	0.7	0.5	0.5	0.3
walls	0.5	0.3	0.5	0.3	0.3	0.5	0.3	0.5	0.3	0.3
working plane	0.2	0.2	0.2	0.2	0.2	0.2	0.2	0.2	0.2	0.2
Room dimensions	Viewed crosswise					Viewed endwise				
x = 2H y = 2H	-18.6	-17.1	-18.0	-16.4	-15.6	-20.0	-18.5	-19.4	-17.8	-17.0
3H	-16.0	-14.5	-15.3	-13.8	-13.0	-11.3	-9.9	-10.7	-9.2	-8.4
4H	-14.7	-13.3	-14.0	-12.6	-11.7	-7.4	-6.0	-6.7	-5.3	-4.4
6H	-13.5	-12.2	-12.9	-11.5	-10.6	-3.6	-2.3	-2.9	-1.5	-0.7
8H	-13.0	-11.7	-12.3	-11.0	-10.1	-1.7	-0.4	-1.0	0.3	1.2
12H	-12.5	-11.2	-11.7	-10.5	-9.6	0.3	1.5	1.0	2.3	3.2
4H 2H	-19.0	-17.6	-18.3	-16.9	-16.0	-20.3	-18.9	-19.6	-18.2	-17.3
3H	-16.4	-15.2	-15.7	-14.4	-13.5	-11.4	-10.1	-10.7	-9.4	-8.5
4H	-15.1	-14.0	-14.4	-13.2	-12.3	-7.1	-6.0	-6.4	-5.2	-4.3
6H	-14.0	-12.9	-13.2	-12.2	-11.2	-3.0	-1.9	-2.2	-1.1	-0.2
8H	-13.5	-12.5	-12.7	-11.7	-10.7	-0.8	0.2	-0.1	1.0	1.9
12H	-12.9	-11.9	-12.1	-11.1	-10.2	1.4	2.4	2.2	3.2	4.1
8H 4H	-14.7	-13.7	-13.9	-12.9	-11.9	-7.3	-6.3	-6.6	-5.5	-4.6
6H	-13.7	-12.8	-12.9	-12.0	-11.0	-2.9	-2.1	-2.2	-1.3	-0.3
8H	-13.2	-12.4	-12.4	-11.6	-10.6	-0.6	0.2	0.2	1.0	2.1
12H	-12.7	-12.0	-11.9	-11.1	-10.1	2.1	2.8	2.9	3.6	4.6
12H 4H	-13.7	-12.8	-12.9	-12.0	-11.0	-7.4	-6.5	-6.6	-5.7	-4.7
6H	-12.9	-12.1	-12.1	-11.3	-10.3	-3.0	-2.2	-2.2	-1.4	-0.4
8H	-12.5	-11.8	-11.7	-10.9	-9.9	-0.6	0.1	0.2	0.9	2.0
Variations with the observer position at spacings:										
S = 1.0H	+ 1.7 / - 1.6					+ 0.2 / - 0.2				
1.5H	+ 2.8 / - 2.8					+ 0.3 / - 0.3				
2.0H	+ 3.9 / - 4.4					+ 0.4 / - 0.6				

CIE Pub.117 Corrected 167.9 lm Total Lamp Luminous Flux.(8log(F/F0) = -6.2)

C Range: 0 - 360DEG
C Interval: 5.0DEG
Test Speed: HIGH
Temperature:25DEG
Operators:luominxian
Test Date:2017-12-08

γ Range: 0 - 180DEG
 γ Interval: 0.5DEG
Test System:EVERFINE GO-2000A_V1 SYSTEM V2.0.272
Humidity:70%
Test Distance:8.425m [K=1.0000]
Remarks:

UTILIZATION FACTORS TABLE

Test:U:120.9V I:0.1101A P:12.00W PF:0.9018 Lamp Flux:167.942x1 lm		
NAME:	TYPE:	WEIGHT:
DIM.:	SPEC.:	SERIAL No.:20171208-01
MFR.: target	SUR.:MM	PROTECTION ANGLE:

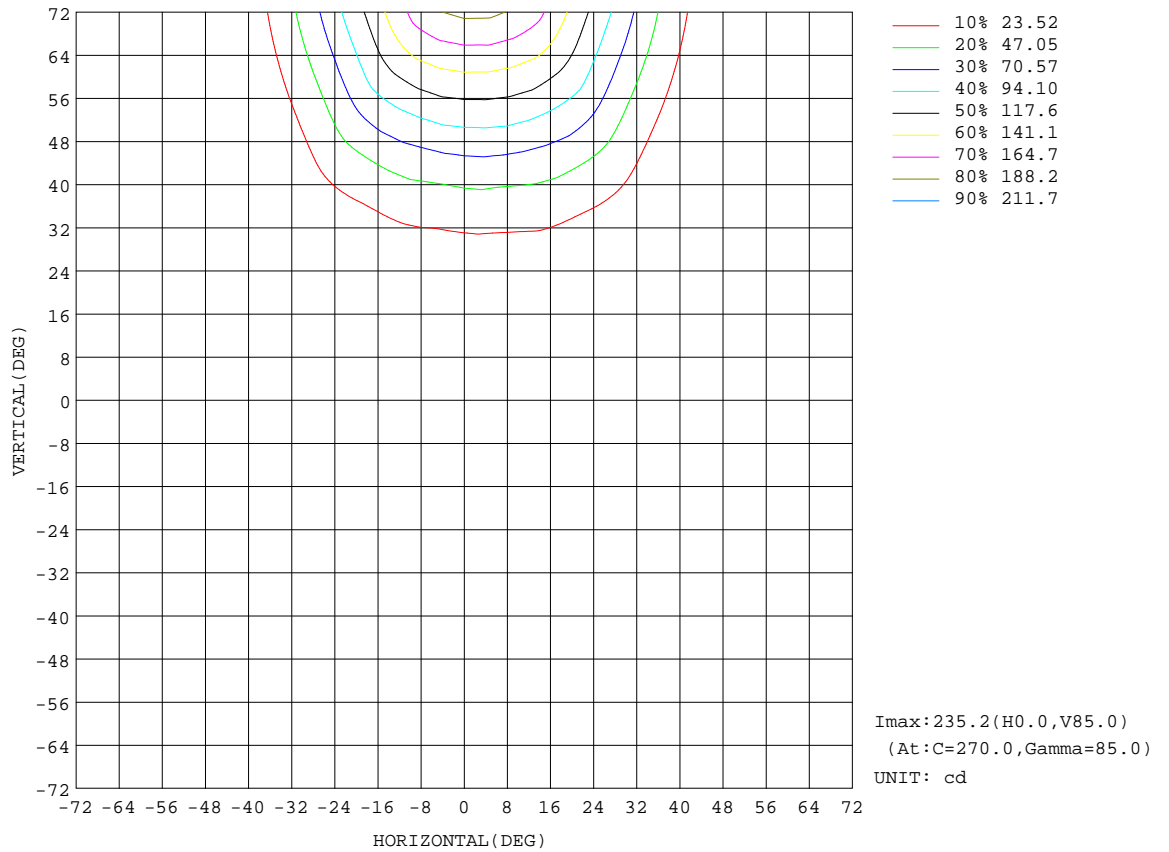
REFLECTANCE										
Ceiling	0.8	0.8	0.8	0.7	0.7	0.7	0.5	0.5	0.5	0
Walls	0.7	0.5	0.3	0.7	0.5	0.3	0.7	0.5	0.3	0
Working plane	0.2	0.2	0.2	0.2	0.2	0.2	0.2	0.2	0.2	0
ROOM INDEX	UTILIZATION FACTORS(PERCENT) $k(RI) \times RCR = 5$									
k = 0.60	33	19	10	32	18	10	30	17	10	2
0.80	41	25	15	39	24	14	36	23	14	5
1.00	47	30	20	45	29	19	41	31	18	8
1.25	54	37	25	51	35	24	47	33	23	12
1.50	59	42	30	56	41	29	51	37	27	15
2.00	67	51	39	64	49	38	58	45	35	21
2.50	73	58	46	69	55	44	62	50	41	26
3.00	78	63	52	74	60	50	66	55	46	30
4.00	84	71	60	79	68	58	71	61	53	36
5.00	88	77	67	83	73	64	75	66	59	40
ROOM INDEX	UF(total)									Direct
According to DIN EN 13032-2 2004			Suspended				SHRNOM = 1.25			

C Range: 0 - 360DEG
 C Interval: 5.0DEG
 Test Speed: HIGH
 Temperature:25DEG
 Operators:luominxian
 Test Date:2017-12-08

γ Range: 0 - 180DEG
 γ Interval: 0.5DEG
 Test System:EVERFINE GO-2000A_V1 SYSTEM V2.0.272
 Humidity:70%
 Test Distance:8.425m [K=1.0000]
 Remarks:

ISOCANDELA DIAGRAM

Test:U:120.9V I:0.1101A P:12.00W PF:0.9018 Lamp Flux:167.942x1 lm		
NAME:	TYPE:	WEIGHT:
DIM.:	SPEC.:	SERIAL No.:20171208-01
MFR.: target	SUR.:MM	PROTECTION ANGLE:

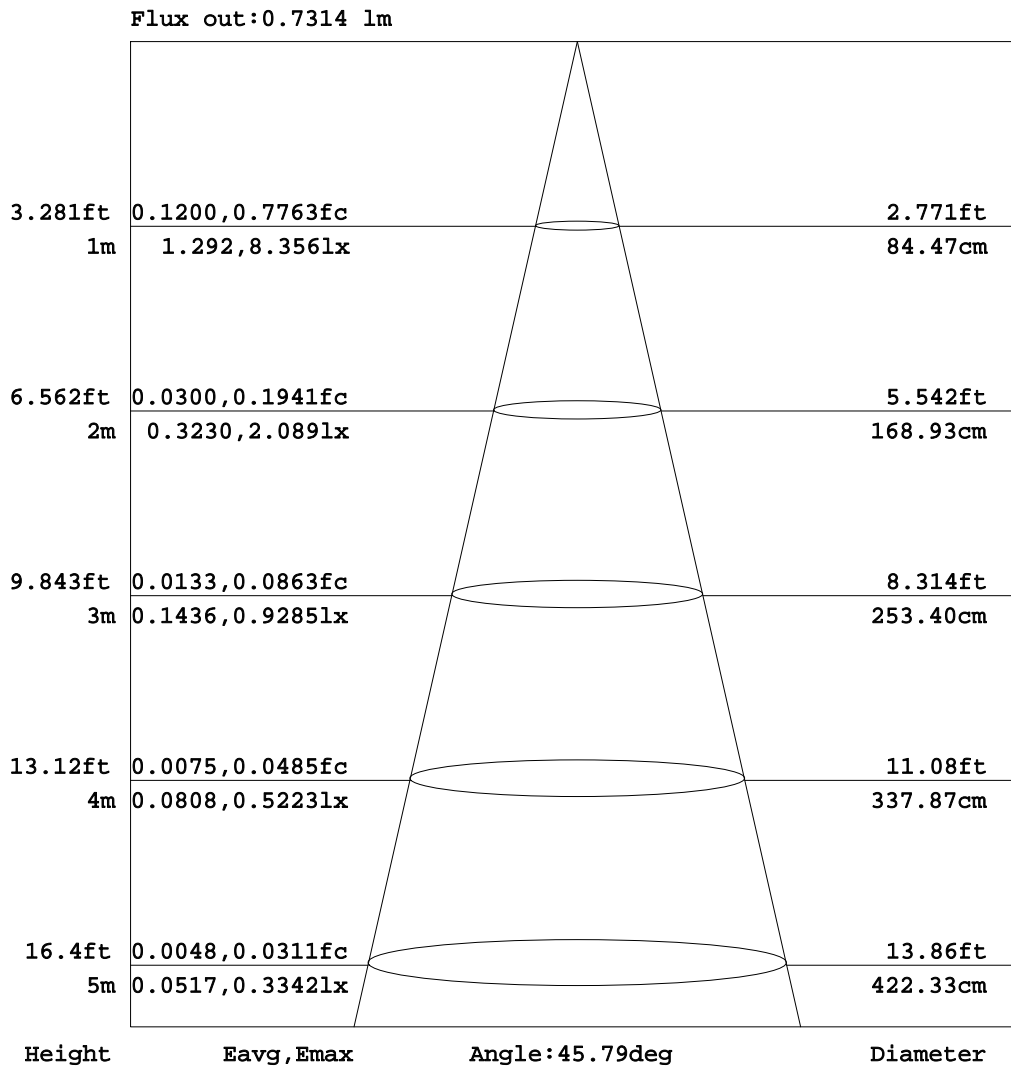


C Range: 0 - 360DEG
 C Interval: 5.0DEG
 Test Speed: HIGH
 Temperature: 25DEG
 Operators: luominxian
 Test Date: 2017-12-08

γ Range: 0 - 180DEG
 γ Interval: 0.5DEG
 Test System: EVERFINE GO-2000A_V1 SYSTEM V2.0.272
 Humidity: 70%
 Test Distance: 8.425m [K=1.0000]
 Remarks:

AAI Figure

Test:U:120.9V I:0.1101A P:12.00W PF:0.9018 Lamp Flux:167.942x1 lm		
NAME:	TYPE:	WEIGHT:
DIM.:	SPEC.:	SERIAL No.:20171208-01
MFR.: target	SUR.:MM	PROTECTION ANGLE:



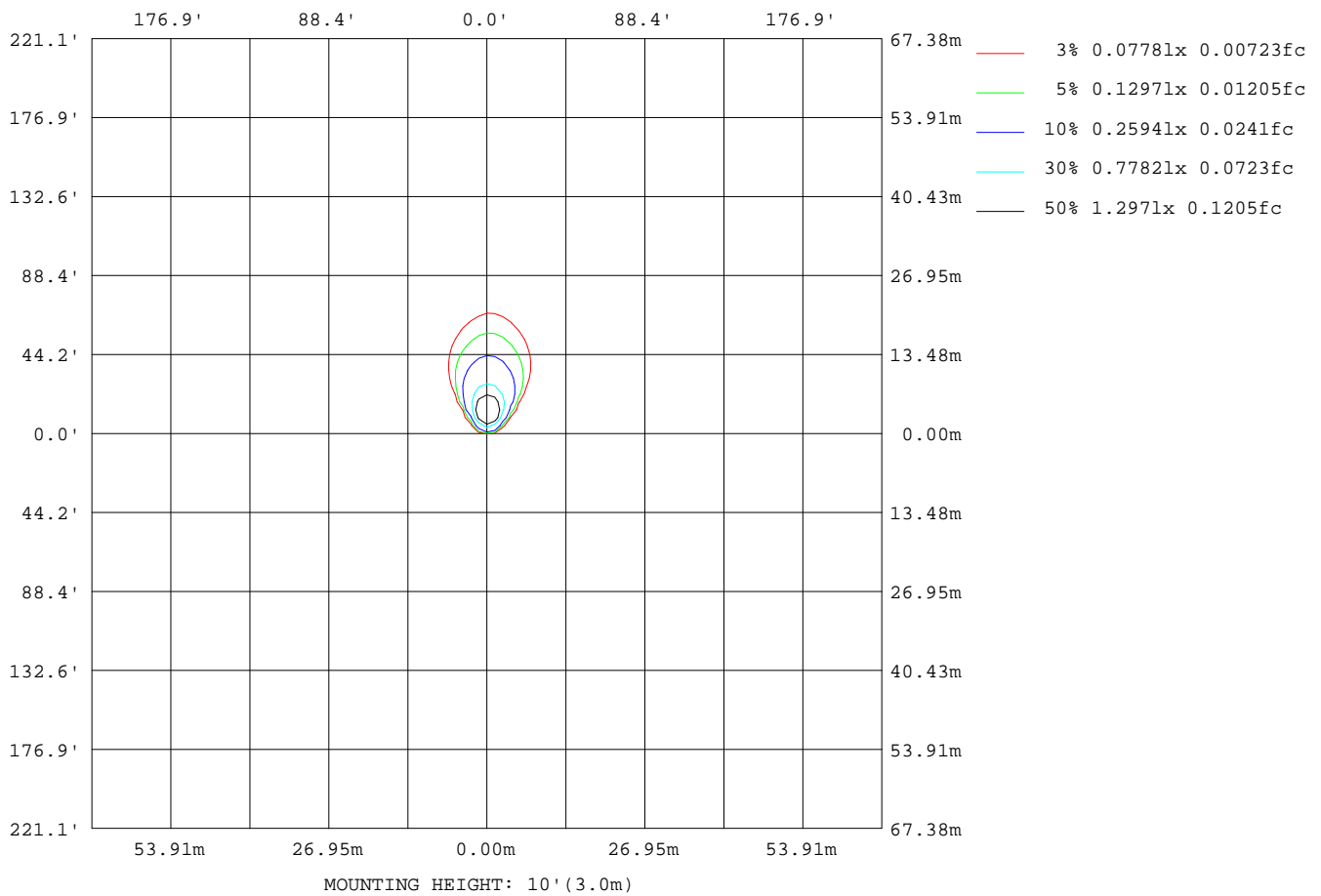
Note:The Curves indicate the illuminated area and the average illumination when the luminaire is at different distance.

C Range: 0 - 360DEG
 C Interval: 5.0DEG
 Test Speed: HIGH
 Temperature:25DEG
 Operators:luominxian
 Test Date:2017-12-08

γ Range: 0 - 180DEG
 γ Interval: 0.5DEG
 Test System:EVERFINE GO-2000A_V1 SYSTEM V2.0.272
 Humidity:70%
 Test Distance:8.425m [K=1.0000]
 Remarks:

ISOLUX DIAGRAM

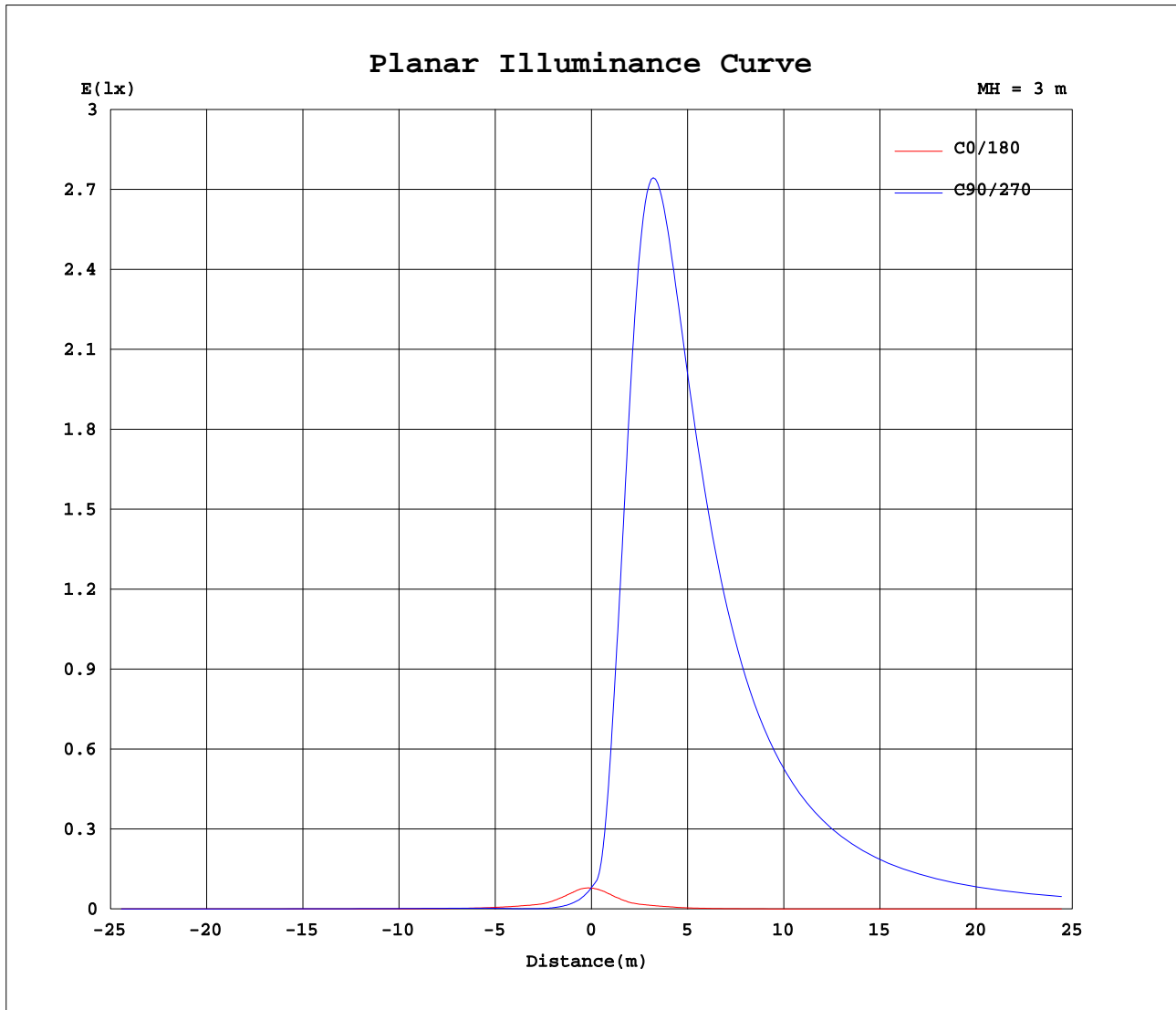
Test:U:120.9V I:0.1101A P:12.00W PF:0.9018 Lamp Flux:167.942x1 lm		
NAME:	TYPE:	WEIGHT:
DIM.:	SPEC.:	SERIAL No.:20171208-01
MFR.: target	SUR.:MM	PROTECTION ANGLE:



C Range: 0 - 360DEG
 C Interval: 5.0DEG
 Test Speed: HIGH
 Temperature:25DEG
 Operators:luominxian
 Test Date:2017-12-08

γ Range: 0 - 180DEG
 γ Interval: 0.5DEG
 Test System:EVERFINE GO-2000A_V1 SYSTEM V2.0.272
 Humidity:70%
 Test Distance:8.425m [K=1.0000]
 Remarks:

Planar Illuminance Curve



C Range: 0 - 360DEG
 C Interval: 5.0DEG
 Test Speed: HIGH
 Temperature: 25DEG
 Operators: luominxian
 Test Date: 2017-12-08

γ Range: 0 - 180DEG
 γ Interval: 0.5DEG
 Test System: EVERFINE GO-2000A_V1 SYSTEM V2.0.272
 Humidity: 70%
 Test Distance: 8.425m [K=1.0000]
 Remarks:

LUMINOUS DISTRIBUTION INTENSITY DATA

Test:U:120.9V I:0.1101A P:12.00W PF:0.9018 Lamp Flux:167.942x1 lm		
NAME:	TYPE:	WEIGHT:
DIM.:	SPEC.:	SERIAL No.:20171208-01
MFR.: target	SUR.:MM	PROTECTION ANGLE:

Table--1

UNIT: cd

C(DEG) γ (DEG)	0	5	10	15	20	25	30	35	40	45	50	55	60	65	70	75	80	85	90
0	0.70	0.72	0.73	0.69	0.73	0.68	0.72	0.67	0.72	0.67	0.72	0.67	0.72	0.67	0.71	0.67	0.72	0.68	0.72
5	0.72	0.67	0.70	0.63	0.66	0.59	0.62	0.56	0.59	0.53	0.57	0.51	0.55	0.50	0.54	0.50	0.53	0.50	0.53
10	0.71	0.64	0.63	0.58	0.58	0.50	0.52	0.44	0.48	0.41	0.45	0.38	0.42	0.37	0.40	0.36	0.40	0.35	0.39
15	0.68	0.58	0.57	0.50	0.51	0.43	0.43	0.37	0.39	0.32	0.35	0.29	0.32	0.28	0.30	0.25	0.29	0.24	0.29
20	0.63	0.53	0.52	0.43	0.43	0.35	0.36	0.29	0.31	0.24	0.27	0.22	0.24	0.18	0.23	0.18	0.21	0.17	0.21
25	0.58	0.48	0.46	0.37	0.38	0.29	0.30	0.23	0.25	0.17	0.20	0.14	0.18	0.13	0.16	0.16	0.15	0.15	0.15
30	0.53	0.43	0.40	0.30	0.32	0.23	0.25	0.16	0.19	0.12	0.16	0.09	0.13	0.07	0.11	0.07	0.11	0.06	0.10
35	0.46	0.36	0.34	0.25	0.26	0.18	0.19	0.11	0.15	0.07	0.12	0.08	0.09	0.03	0.08	0.03	0.06	0.03	0.07
40	0.40	0.34	0.29	0.22	0.21	0.16	0.15	0.08	0.11	0.05	0.08	0.02	0.06	0.03	0.05	0.03	0.04	0.03	0.05
45	0.40	0.33	0.29	0.22	0.20	0.14	0.12	0.07	0.08	0.02	0.05	0.02	0.04	0.03	0.03	0.03	0.03	0.03	0.04
50	0.42	0.32	0.29	0.21	0.19	0.10	0.11	0.04	0.05	0.02	0.03	0.03	0.03	0.04	0.03	0.05	0.03	0.06	0.04
55	0.42	0.30	0.27	0.17	0.16	0.08	0.09	0.01	0.04	0.02	0.03	0.04	0.03	0.06	0.04	0.10	0.06	0.13	0.09
60	0.41	0.30	0.24	0.15	0.12	0.04	0.05	0.01	0.03	0.03	0.03	0.06	0.07	0.12	0.10	0.19	0.16	0.24	0.21
65	0.38	0.23	0.20	0.09	0.09	0.02	0.02	0.02	0.03	0.05	0.03	0.10	0.09	0.19	0.20	0.29	0.29	0.39	0.37
70	0.34	0.19	0.15	0.04	0.04	0.02	0.02	0.02	0.03	0.05	0.05	0.13	0.15	0.25	0.29	0.40	0.43	0.54	0.54
75	0.28	0.14	0.09	0.01	0.02	0.02	0.02	0.02	0.03	0.07	0.07	0.17	0.20	0.32	0.37	0.51	0.57	0.68	0.68
80	0.21	0.07	0.03	0.01	0.02	0.02	0.02	0.02	0.03	0.07	0.08	0.17	0.23	0.37	0.43	0.59	0.65	0.78	0.80
85	0.14	0.02	0.02	0.01	0.02	0.02	0.02	0.02	0.03	0.07	0.09	0.17	0.25	0.37	0.50	0.65	0.73	0.86	0.87
90	0.05	0.02	0.02	0.01	0.02	0.02	0.02	0.02	0.03	0.07	0.10	0.17	0.29	0.37	0.51	0.65	0.75	0.87	0.94
95	0.03	0.02	0.02	0.01	0.02	0.02	0.02	0.02	0.03	0.07	0.10	0.16	0.29	0.37	0.51	0.63	0.75	0.86	0.93
100	0.03	0.02	0.01	0.01	0.02	0.02	0.02	0.03	0.03	0.07	0.10	0.16	0.29	0.37	0.51	0.58	0.74	0.79	0.91
105	0.02	0.02	0.01	0.01	0.02	0.02	0.02	0.03	0.03	0.06	0.10	0.15	0.27	0.32	0.47	0.53	0.68	0.72	0.83
110	0.02	0.02	0.01	0.01	0.02	0.02	0.02	0.03	0.03	0.06	0.10	0.14	0.25	0.30	0.43	0.47	0.60	0.64	0.74
115	0.01	0.02	0.01	0.01	0.02	0.02	0.02	0.03	0.03	0.06	0.10	0.13	0.22	0.24	0.37	0.39	0.51	0.53	0.62
120	0.01	0.02	0.01	0.01	0.02	0.02	0.02	0.03	0.03	0.06	0.10	0.10	0.19	0.21	0.30	0.31	0.42	0.43	0.52
125	0.01	0.02	0.01	0.01	0.02	0.02	0.02	0.03	0.03	0.06	0.10	0.09	0.17	0.15	0.25	0.24	0.34	0.36	0.43
130	0.01	0.02	0.01	0.01	0.02	0.02	0.02	0.03	0.03	0.06	0.10	0.08	0.14	0.13	0.20	0.21	0.28	0.27	0.34
135	0.01	0.02	0.01	0.01	0.02	0.02	0.02	0.03	0.03	0.06	0.10	0.08	0.12	0.09	0.17	0.15	0.23	0.21	0.28
140	0.02	0.02	0.01	0.01	0.02	0.02	0.02	0.02	0.05	0.05	0.10	0.08	0.12	0.08	0.15	0.14	0.19	0.16	0.23
145	0.02	0.02	0.01	0.01	0.02	0.02	0.02	0.02	0.06	0.03	0.08	0.04	0.10	0.07	0.12	0.09	0.15	0.14	0.18
150	0.02	0.02	0.01	0.01	0.02	0.02	0.02	0.02	0.05	0.01	0.06	0.01	0.07	0.05	0.09	0.07	0.11	0.08	0.13
155	0.02	0.02	0.01	0.01	0.02	0.02	0.02	0.02	0.04	0.01	0.05	0.00	0.05	0.02	0.06	0.03	0.09	0.06	0.10
160	0.02	0.02	0.01	0.01	0.02	0.02	0.02	0.02	0.03	0.01	0.04	0.00	0.04	0.02	0.05	0.02	0.06	0.01	0.07
165	0.02	0.01	0.01	0.01	0.02	0.02	0.02	0.02	0.02	0.01	0.03	0.00	0.03	0.01	0.03	0.02	0.05	0.01	0.05
170	0.01	0.01	0.01	0.01	0.02	0.02	0.01	0.01	0.02	0.01	0.02	0.00	0.02	0.01	0.03	0.02	0.03	0.01	0.03
175	0.01	0.01	0.01	0.01	0.02	0.02	0.01	0.01	0.02	0.01	0.02	0.00	0.02	0.01	0.02	0.02	0.02	0.01	0.03
180	0.01	0.01	0.01	0.01	0.01	0.00	0.01	0.01	0.01	0.02	0.01	0.01	0.01	0.01	0.01	0.01	0.01	0.01	0.01

C Range: 0 - 360DEG
 C Interval: 5.0DEG
 Test Speed: HIGH
 Temperature:25DEG
 Operators:luominxian
 Test Date:2017-12-08

γ Range: 0 - 180DEG
 γ Interval: 0.5DEG
 Test System:EVERFINE GO-2000A_V1 SYSTEM V2.0.272
 Humidity:70%
 Test Distance:8.425m [K=1.0000]
 Remarks:

LUMINOUS DISTRIBUTION INTENSITY DATA

Test:U:120.9V I:0.1101A P:12.00W PF:0.9018 Lamp Flux:167.942x1 lm		
NAME:	TYPE:	WEIGHT:
DIM.:	SPEC.:	SERIAL No.:20171208-01
MFR.: target	SUR.:MM	PROTECTION ANGLE:

Table--2

UNIT: cd

C(DEG) γ (DEG)	95	100	105	110	115	120	125	130	135	140	145	150	155	160	165	170	175	180	185
0	0.68	0.72	0.69	0.73	0.69	0.74	0.71	0.75	0.71	0.76	0.72	0.77	0.73	0.79	0.75	0.79	0.76	0.70	0.72
5	0.50	0.53	0.50	0.54	0.50	0.55	0.52	0.58	0.55	0.60	0.58	0.64	0.61	0.68	0.66	0.72	0.71	0.69	0.73
10	0.35	0.39	0.36	0.40	0.36	0.41	0.38	0.44	0.42	0.48	0.45	0.53	0.51	0.58	0.57	0.65	0.65	0.65	0.73
15	0.24	0.28	0.24	0.29	0.26	0.31	0.29	0.34	0.31	0.38	0.35	0.43	0.42	0.49	0.50	0.58	0.57	0.61	0.70
20	0.16	0.21	0.16	0.22	0.18	0.23	0.21	0.27	0.23	0.30	0.28	0.35	0.33	0.41	0.41	0.49	0.51	0.55	0.65
25	0.10	0.15	0.10	0.15	0.12	0.17	0.13	0.20	0.16	0.24	0.22	0.28	0.28	0.34	0.35	0.43	0.43	0.50	0.60
30	0.07	0.11	0.06	0.11	0.07	0.12	0.08	0.15	0.11	0.18	0.15	0.22	0.21	0.28	0.29	0.36	0.37	0.43	0.54
35	0.04	0.07	0.04	0.08	0.03	0.09	0.06	0.11	0.07	0.14	0.10	0.17	0.17	0.22	0.22	0.30	0.31	0.37	0.48
40	0.04	0.05	0.04	0.05	0.03	0.05	0.04	0.07	0.04	0.10	0.07	0.13	0.15	0.18	0.17	0.24	0.29	0.36	0.44
45	0.05	0.03	0.05	0.04	0.03	0.04	0.04	0.05	0.04	0.07	0.04	0.10	0.08	0.16	0.16	0.24	0.29	0.37	0.43
50	0.07	0.03	0.07	0.04	0.07	0.04	0.05	0.04	0.04	0.05	0.04	0.09	0.08	0.15	0.14	0.24	0.26	0.37	0.43
55	0.14	0.09	0.14	0.08	0.12	0.06	0.09	0.04	0.06	0.04	0.04	0.05	0.03	0.12	0.12	0.21	0.23	0.35	0.43
60	0.28	0.22	0.26	0.19	0.21	0.14	0.14	0.07	0.08	0.04	0.04	0.03	0.03	0.08	0.06	0.17	0.22	0.29	0.42
65	0.44	0.38	0.41	0.32	0.32	0.22	0.21	0.12	0.12	0.05	0.05	0.03	0.03	0.05	0.03	0.13	0.14	0.24	0.38
70	0.61	0.56	0.56	0.46	0.44	0.33	0.29	0.18	0.16	0.07	0.07	0.03	0.03	0.03	0.02	0.07	0.09	0.18	0.34
75	0.76	0.71	0.71	0.59	0.55	0.45	0.36	0.23	0.20	0.09	0.09	0.03	0.04	0.03	0.02	0.03	0.05	0.12	0.27
80	0.87	0.81	0.82	0.70	0.63	0.50	0.42	0.30	0.23	0.11	0.11	0.03	0.04	0.02	0.02	0.02	0.02	0.06	0.21
85	0.95	0.90	0.89	0.77	0.70	0.53	0.46	0.30	0.25	0.14	0.11	0.03	0.04	0.02	0.02	0.02	0.02	0.01	0.13
90	0.99	0.94	0.91	0.81	0.72	0.57	0.46	0.35	0.25	0.14	0.12	0.03	0.04	0.02	0.03	0.02	0.02	0.01	0.04
95	0.94	0.95	0.90	0.82	0.72	0.58	0.46	0.37	0.25	0.14	0.12	0.04	0.04	0.02	0.03	0.02	0.02	0.01	0.01
100	0.91	0.94	0.87	0.82	0.69	0.59	0.45	0.37	0.25	0.15	0.12	0.04	0.04	0.02	0.03	0.01	0.02	0.01	0.01
105	0.83	0.87	0.81	0.78	0.65	0.58	0.44	0.37	0.25	0.15	0.12	0.05	0.04	0.02	0.03	0.01	0.02	0.01	0.01
110	0.73	0.78	0.72	0.71	0.58	0.54	0.42	0.36	0.22	0.15	0.12	0.05	0.05	0.02	0.03	0.01	0.03	0.02	0.01
115	0.62	0.67	0.62	0.62	0.51	0.49	0.36	0.33	0.21	0.15	0.12	0.07	0.06	0.02	0.03	0.01	0.03	0.03	0.01
120	0.50	0.56	0.51	0.53	0.43	0.43	0.32	0.30	0.20	0.15	0.13	0.08	0.06	0.02	0.03	0.01	0.03	0.05	0.01
125	0.41	0.45	0.42	0.43	0.36	0.37	0.29	0.28	0.17	0.16	0.13	0.08	0.06	0.02	0.04	0.02	0.03	0.05	0.01
130	0.32	0.37	0.33	0.36	0.29	0.32	0.24	0.24	0.16	0.16	0.13	0.08	0.07	0.02	0.06	0.02	0.03	0.08	0.08
135	0.29	0.31	0.31	0.31	0.29	0.28	0.22	0.23	0.16	0.16	0.14	0.08	0.07	0.05	0.08	0.02	0.03	0.01	0.09
140	0.21	0.25	0.22	0.26	0.21	0.24	0.17	0.20	0.15	0.15	0.10	0.08	0.07	0.08	0.06	0.03	0.03	0.01	0.02
145	0.15	0.19	0.16	0.20	0.15	0.19	0.14	0.16	0.10	0.13	0.08	0.08	0.06	0.08	0.03	0.03	0.02	0.01	0.01
150	0.09	0.14	0.10	0.15	0.09	0.14	0.08	0.12	0.07	0.10	0.06	0.08	0.03	0.06	0.02	0.03	0.02	0.01	0.01
155	0.07	0.10	0.08	0.11	0.08	0.10	0.06	0.09	0.03	0.08	0.02	0.06	0.02	0.05	0.02	0.03	0.02	0.01	0.01
160	0.02	0.08	0.03	0.07	0.03	0.06	0.02	0.07	0.02	0.05	0.01	0.05	0.02	0.04	0.02	0.03	0.02	0.01	0.01
165	0.01	0.05	0.02	0.05	0.02	0.05	0.02	0.05	0.02	0.05	0.01	0.04	0.02	0.04	0.02	0.03	0.02	0.01	0.01
170	0.01	0.04	0.02	0.04	0.02	0.04	0.02	0.04	0.02	0.04	0.01	0.03	0.02	0.03	0.02	0.03	0.02	0.00	0.01
175	0.01	0.03	0.02	0.03	0.02	0.03	0.02	0.03	0.01	0.02	0.01	0.03	0.02	0.03	0.02	0.02	0.02	0.00	0.01
180	0.01	0.02	0.02	0.02	0.02	0.02	0.02	0.02	0.01	0.02	0.01	0.02	0.02	0.01	0.02	0.02	0.02	0.01	0.00

C Range: 0 - 360DEG
 C Interval: 5.0DEG
 Test Speed: HIGH
 Temperature:25DEG
 Operators:luominxian
 Test Date:2017-12-08

γ Range: 0 - 180DEG
 γ Interval: 0.5DEG
 Test System:EVERFINE GO-2000A_V1 SYSTEM V2.0.272
 Humidity:70%
 Test Distance:8.425m [K=1.0000]
 Remarks:

LUMINOUS DISTRIBUTION INTENSITY DATA

Test:U:120.9V I:0.1101A P:12.00W PF:0.9018 Lamp Flux:167.942x1 lm		
NAME:	TYPE:	WEIGHT:
DIM.:	SPEC.:	SERIAL No.:20171208-01
MFR.: target	SUR.:MM	PROTECTION ANGLE:

Table--3

UNIT: cd

C(DEG) γ (DEG)	190	195	200	205	210	215	220	225	230	235	240	245	250	255	260	265	270	275	280
0	0.73	0.69	0.73	0.68	0.72	0.67	0.72	0.67	0.72	0.67	0.72	0.67	0.71	0.67	0.72	0.68	0.72	0.68	0.72
5	0.73	0.74	0.79	0.76	0.82	0.79	0.85	0.82	0.88	0.86	0.91	0.88	0.93	0.91	0.95	0.93	0.96	0.93	0.97
10	0.73	0.78	0.84	0.83	0.91	0.90	1.01	1.05	1.17	1.24	1.36	1.44	1.54	1.62	1.68	1.73	1.75	1.77	1.75
15	0.71	0.77	0.85	0.89	1.06	1.19	1.43	1.66	1.96	2.28	2.57	2.89	3.15	3.42	3.60	3.77	3.83	3.88	3.79
20	0.67	0.77	0.87	1.01	1.32	1.67	2.16	2.72	3.33	4.05	4.73	5.45	6.05	6.63	7.02	7.40	7.51	7.61	7.40
25	0.62	0.75	0.87	1.15	1.60	2.19	3.06	4.11	5.26	6.54	7.82	9.16	10.3	11.3	12.1	12.8	13.1	13.2	12.8
30	0.58	0.72	0.87	1.24	1.81	2.59	3.78	5.37	7.26	9.43	11.7	14.2	16.3	18.1	19.4	20.7	21.4	21.6	20.8
35	0.52	0.67	0.87	1.30	1.95	2.87	4.29	6.45	9.34	12.7	16.3	20.6	24.8	28.0	29.7	31.6	33.4	33.9	31.9
40	0.49	0.62	0.84	1.31	2.03	3.09	4.75	7.53	12.0	17.3	22.6	28.8	35.6	41.3	44.1	46.9	49.4	50.1	47.3
45	0.54	0.56	0.72	1.06	1.72	2.91	4.88	8.27	14.5	23.0	31.0	39.7	49.2	57.1	62.0	66.7	69.2	69.5	66.7
50	0.57	0.67	0.84	1.08	1.66	2.58	4.26	7.68	15.2	27.8	40.3	52.5	65.2	75.0	82.3	88.9	91.3	91.4	88.6
55	0.55	0.73	0.94	1.14	1.68	2.60	4.23	7.27	14.7	29.5	46.2	64.9	81.4	93.7	104	111	114	114	110
60	0.51	0.74	0.96	1.24	1.72	2.62	4.27	7.32	14.9	30.9	49.4	72.1	95.4	112	126	134	137	137	132
65	0.49	0.72	0.96	1.31	1.78	2.68	4.30	7.34	15.0	32.7	52.7	77.6	103	129	146	156	161	160	154
70	0.43	0.69	0.94	1.36	1.86	2.71	4.31	7.31	15.0	34.2	56.2	83.5	110	139	165	179	184	184	175
75	0.37	0.64	0.91	1.37	1.97	2.76	4.29	7.20	14.9	35.2	59.2	88.7	117	148	176	198	207	206	195
80	0.31	0.57	0.86	1.36	1.99	2.81	4.25	7.01	14.5	35.8	61.6	92.3	123	155	184	211	226	225	207
85	0.21	0.47	0.76	1.28	1.96	2.86	4.17	6.74	13.9	35.7	63.0	94.1	127	159	189	215	235	234	212
90	0.13	0.35	0.63	1.15	1.83	2.83	4.04	6.36	13.0	34.9	63.2	94.1	127	159	190	214	230	229	212
95	0.01	0.21	0.46	0.97	1.65	2.71	3.94	5.82	11.6	32.4	60.5	90.5	123	154	184	206	211	211	205
100	0.01	0.05	0.25	0.72	1.39	2.41	3.77	5.02	8.36	20.9	39.4	59.6	82.3	105	127	138	142	141	140
105	0.01	0.01	0.02	0.40	0.99	1.93	3.20	4.59	5.95	9.39	15.9	24.5	35.5	46.2	57.1	61.0	65.5	65.0	63.2
110	0.01	0.01	0.02	0.06	0.48	1.31	2.38	3.65	4.84	5.79	7.36	9.32	11.8	13.8	15.6	17.4	18.9	18.8	18.1
115	0.03	0.01	0.03	0.02	0.03	0.54	1.43	2.43	3.48	4.26	4.99	5.84	6.69	7.47	8.66	9.55	10.2	10.2	9.79
120	0.04	0.01	0.04	0.02	0.03	0.03	0.37	1.19	1.97	2.64	3.27	3.75	4.25	4.84	5.50	5.99	6.31	6.33	6.14
125	0.05	0.01	0.05	0.02	0.05	0.02	0.05	0.06	0.59	1.14	1.65	2.09	2.53	2.91	3.29	3.55	3.74	3.77	3.69
130	0.09	0.04	0.09	0.04	0.08	0.02	0.08	0.05	0.10	0.10	0.29	0.65	0.93	1.16	1.37	1.57	1.61	1.62	1.59
135	0.10	0.10	0.09	0.09	0.07	0.08	0.07	0.14	0.08	0.13	0.09	0.14	0.09	0.16	0.19	0.30	0.34	0.38	0.33
140	0.01	0.05	0.00	0.05	0.01	0.03	0.01	0.03	0.01	0.03	0.01	0.04	0.01	0.05	0.01	0.05	0.01	0.07	0.01
145	0.00	0.01	0.00	0.01	0.01	0.00	0.01	0.01	0.01	0.01	0.01	0.02	0.01	0.03	0.01	0.03	0.01	0.02	0.01
150	0.00	0.01	0.00	0.01	0.01	0.00	0.00	0.01	0.01	0.01	0.01	0.01	0.01	0.02	0.01	0.02	0.01	0.02	0.01
155	0.00	0.01	0.00	0.01	0.01	0.00	0.01	0.01	0.01	0.01	0.01	0.01	0.01	0.01	0.01	0.02	0.01	0.01	0.02
160	0.00	0.00	0.00	0.01	0.01	0.00	0.01	0.01	0.01	0.01	0.01	0.01	0.01	0.01	0.02	0.01	0.01	0.01	0.01
165	0.00	0.00	0.02	0.01	0.01	0.00	0.01	0.01	0.01	0.01	0.01	0.01	0.01	0.01	0.02	0.01	0.01	0.01	0.01
170	0.00	0.00	0.01	0.01	0.01	0.00	0.01	0.01	0.02	0.01	0.01	0.00	0.01	0.01	0.02	0.01	0.01	0.01	0.01
175	0.01	0.00	0.01	0.01	0.01	0.00	0.01	0.01	0.01	0.01	0.01	0.01	0.01	0.01	0.02	0.01	0.01	0.01	0.01
180	0.00	0.01	0.01	0.01	0.01	0.00	0.01	0.01	0.01	0.01	0.01	0.01	0.01	0.01	0.02	0.01	0.01	0.02	0.01

C Range: 0 - 360DEG
 C Interval: 5.0DEG
 Test Speed: HIGH
 Temperature:25DEG
 Operators:luominxian
 Test Date:2017-12-08

γ Range: 0 - 180DEG
 γ Interval: 0.5DEG
 Test System:EVERFINE GO-2000A_V1 SYSTEM V2.0.272
 Humidity:70%
 Test Distance:8.425m [K=1.0000]
 Remarks:

LUMINOUS DISTRIBUTION INTENSITY DATA

Test:U:120.9V I:0.1101A P:12.00W PF:0.9018 Lamp Flux:167.942x1 lm		
NAME:	TYPE:	WEIGHT:
DIM.:	SPEC.:	SERIAL No.:20171208-01
MFR.: target	SUR.:MM	PROTECTION ANGLE:

Table--4

UNIT: cd

C(DEG) γ (DEG)	285	290	295	300	305	310	315	320	325	330	335	340	345	350	355				
0	0.69	0.73	0.69	0.74	0.71	0.75	0.71	0.76	0.72	0.77	0.73	0.79	0.75	0.79	0.76				
5	0.93	0.96	0.93	0.96	0.93	0.95	0.90	0.94	0.88	0.91	0.86	0.88	0.82	0.85	0.80				
10	1.71	1.66	1.59	1.52	1.43	1.36	1.25	1.20	1.09	1.06	0.97	0.97	0.89	0.87	0.80				
15	3.70	3.49	3.29	3.01	2.76	2.45	2.17	1.88	1.61	1.40	1.18	1.06	0.94	0.85	0.80				
20	7.19	6.73	6.27	5.66	5.03	4.32	3.67	3.02	2.44	1.94	1.51	1.20	0.95	0.82	0.77				
25	12.4	11.5	10.6	9.44	8.26	6.91	5.67	4.46	3.42	2.51	1.80	1.34	1.00	0.80	0.73				
30	19.8	18.3	16.8	14.7	12.4	10.0	7.83	5.85	4.20	2.95	2.05	1.47	1.02	0.75	0.67				
35	30.1	28.2	25.6	21.4	17.3	13.4	10.0	7.05	4.82	3.29	2.23	1.54	1.01	0.71	0.60				
40	44.5	41.4	36.6	29.6	23.4	17.9	12.7	8.22	5.34	3.55	2.35	1.54	0.99	0.65	0.54				
45	62.4	56.8	49.7	40.1	31.4	23.2	15.1	9.05	5.51	3.39	2.06	1.24	0.82	0.66	0.55				
50	82.2	74.2	65.0	52.3	40.0	27.8	15.9	8.54	4.90	3.05	1.93	1.28	0.88	0.76	0.58				
55	103	92.0	80.2	64.1	46.0	29.6	15.4	8.17	4.87	3.04	1.92	1.31	0.97	0.75	0.58				
60	124	109	93.7	71.5	49.1	30.8	15.6	8.18	4.88	3.02	1.92	1.36	1.02	0.75	0.58				
65	143	126	102	76.7	52.1	32.4	15.7	8.17	4.87	3.01	1.93	1.44	1.02	0.73	0.57				
70	161	136	108	81.9	55.3	33.5	15.6	8.11	4.85	3.02	1.99	1.47	1.02	0.70	0.52				
75	172	144	114	86.5	57.7	34.3	15.4	7.99	4.81	3.02	2.09	1.46	1.02	0.64	0.47				
80	179	151	120	89.8	59.7	34.6	15.0	7.80	4.74	3.05	2.13	1.44	0.98	0.59	0.39				
85	185	155	124	91.2	60.6	34.4	14.3	7.52	4.63	3.08	2.11	1.36	0.88	0.49	0.30				
90	186	155	123	90.7	60.5	33.4	13.3	7.11	4.46	3.05	2.00	1.24	0.76	0.37	0.20				
95	181	152	120	88.1	58.0	31.2	11.9	6.50	4.28	2.90	1.82	1.05	0.59	0.22	0.08				
100	126	106	81.6	59.8	38.8	21.0	8.79	5.54	4.03	2.58	1.55	0.79	0.37	0.07	0.02				
105	58.8	49.4	37.3	27.1	17.4	10.5	6.42	5.00	3.40	2.07	1.14	0.45	0.12	0.02	0.02				
110	16.1	15.1	12.5	10.2	7.97	6.32	5.21	3.92	2.54	1.42	0.61	0.07	0.03	0.03	0.02				
115	8.87	7.87	7.18	6.29	5.35	4.65	3.68	2.61	1.55	0.62	0.09	0.03	0.03	0.03	0.02				
120	5.69	5.13	4.50	4.08	3.53	2.91	2.13	1.30	0.46	0.04	0.05	0.03	0.03	0.03	0.02				
125	3.46	3.16	2.75	2.34	1.83	1.31	0.68	0.07	0.06	0.04	0.05	0.03	0.03	0.03	0.02				
130	1.47	1.29	1.04	0.74	0.37	0.08	0.05	0.05	0.04	0.04	0.05	0.03	0.03	0.03	0.02				
135	0.30	0.20	0.20	0.18	0.15	0.14	0.11	0.10	0.10	0.13	0.11	0.11	0.10	0.13	0.08				
140	0.05	0.01	0.06	0.01	0.05	0.01	0.05	0.01	0.05	0.02	0.08	0.03	0.08	0.05	0.07				
145	0.02	0.00	0.01	0.01	0.01	0.01	0.01	0.01	0.02	0.01	0.02	0.01	0.01	0.01	0.02				
150	0.01	0.00	0.01	0.01	0.01	0.01	0.01	0.01	0.01	0.01	0.01	0.01	0.01	0.01	0.02				
155	0.01	0.00	0.01	0.01	0.01	0.01	0.01	0.01	0.01	0.01	0.01	0.01	0.01	0.01	0.02				
160	0.01	0.00	0.01	0.01	0.01	0.01	0.01	0.00	0.01	0.01	0.01	0.01	0.01	0.01	0.02				
165	0.01	0.01	0.01	0.01	0.01	0.01	0.01	0.01	0.01	0.01	0.01	0.02	0.01	0.02	0.02				
170	0.01	0.02	0.01	0.01	0.01	0.01	0.01	0.01	0.01	0.02	0.01	0.02	0.02	0.02	0.02				
175	0.01	0.01	0.01	0.01	0.01	0.01	0.01	0.01	0.01	0.02	0.01	0.02	0.02	0.02	0.02				
180	0.01	0.01	0.00	0.01	0.01	0.01	0.01	0.01	0.01	0.02	0.02	0.02	0.02	0.02	0.02				

C Range: 0 - 360DEG
 C Interval: 5.0DEG
 Test Speed: HIGH
 Temperature:25DEG
 Operators:luominxian
 Test Date:2017-12-08

γ Range: 0 - 180DEG
 γ Interval: 0.5DEG
 Test System:EVERFINE GO-2000A_V1 SYSTEM V2.0.272
 Humidity:70%
 Test Distance:8.425m [K=1.0000]
 Remarks:

Photometric Data Table [cd]

G/C	0.0	5.0	10.0	15.0	20.0	25.0	30.0	35.0	40.0	45.0
0.0	0.7017	0.7153	0.7288	0.6926	0.7334	0.6834	0.7198	0.6699	0.7154	0.6694
2.5	0.7195	0.6881	0.7153	0.6653	0.6928	0.6473	0.6701	0.6065	0.6478	0.5929
5.0	0.7180	0.6735	0.6971	0.6337	0.6565	0.5928	0.6158	0.5649	0.5888	0.5293
7.5	0.7165	0.6562	0.6612	0.5975	0.6159	0.5474	0.5705	0.5060	0.5346	0.4662
10.0	0.7134	0.6428	0.6338	0.5791	0.5753	0.5025	0.5208	0.4435	0.4845	0.4118
12.5	0.7018	0.6111	0.6068	0.5250	0.5387	0.4662	0.4711	0.4025	0.4347	0.3666
15.0	0.6819	0.5839	0.5749	0.5025	0.5070	0.4318	0.4347	0.3666	0.3893	0.3168
17.5	0.6564	0.5659	0.5523	0.4617	0.4665	0.3933	0.4029	0.3123	0.3441	0.2794
20.0	0.6338	0.5341	0.5163	0.4301	0.4346	0.3531	0.3578	0.2897	0.3126	0.2353
22.5	0.6157	0.5105	0.4934	0.3937	0.3984	0.3167	0.3305	0.2444	0.2762	0.2216
25.0	0.5797	0.4841	0.4618	0.3667	0.3757	0.2896	0.2991	0.2254	0.2535	0.1719
27.5	0.5523	0.4432	0.4301	0.3393	0.3350	0.2534	0.2671	0.1945	0.2218	0.1448
30.0	0.5251	0.4254	0.3984	0.3033	0.3167	0.2263	0.2490	0.1584	0.1902	0.1176
32.5	0.4936	0.3803	0.3667	0.2828	0.2807	0.2037	0.2218	0.1380	0.1675	0.0904
35.0	0.4618	0.3630	0.3352	0.2534	0.2626	0.1763	0.1902	0.1132	0.1494	0.0724
37.5	0.4302	0.3395	0.3127	0.2253	0.2399	0.1551	0.1723	0.0904	0.1268	0.0724
40.0	0.3986	0.3374	0.2939	0.2203	0.2083	0.1578	0.1503	0.0770	0.1132	0.0452
42.5	0.3977	0.3352	0.2922	0.2178	0.2019	0.1494	0.1295	0.0724	0.0860	0.0226
45.0	0.4026	0.3330	0.2904	0.2158	0.1989	0.1396	0.1237	0.0679	0.0770	0.0181
47.5	0.4030	0.3309	0.2887	0.2139	0.1959	0.1176	0.1178	0.0362	0.0679	0.0181
50.0	0.4213	0.3249	0.2869	0.2055	0.1946	0.0994	0.1115	0.0361	0.0545	0.0181
52.5	0.4228	0.3167	0.2852	0.1765	0.1797	0.0904	0.0996	0.0136	0.0498	0.0181
55.0	0.4243	0.2988	0.2671	0.1673	0.1631	0.0770	0.0860	0.0136	0.0363	0.0182
57.5	0.4211	0.2996	0.2582	0.1484	0.1495	0.0812	0.0679	0.0136	0.0272	0.0274
60.0	0.4119	0.2951	0.2355	0.1457	0.1225	0.0449	0.0499	0.0136	0.0272	0.0317
62.5	0.3996	0.2671	0.2175	0.1086	0.1087	0.0181	0.0317	0.0181	0.0272	0.0363
65.0	0.3799	0.2263	0.1992	0.0858	0.0905	0.0181	0.0226	0.0181	0.0272	0.0453
67.5	0.3665	0.2145	0.1721	0.0679	0.0679	0.0181	0.0226	0.0226	0.0272	0.0454
70.0	0.3396	0.1855	0.1451	0.0361	0.0362	0.0181	0.0226	0.0226	0.0272	0.0498
72.5	0.3125	0.1537	0.1268	0.0136	0.0226	0.0181	0.0226	0.0226	0.0272	0.0635
75.0	0.2809	0.1402	0.0905	0.0136	0.0181	0.0181	0.0226	0.0226	0.0272	0.0679
77.5	0.2536	0.0992	0.0591	0.0136	0.0181	0.0181	0.0226	0.0226	0.0272	0.0724
80.0	0.2129	0.0679	0.0318	0.0136	0.0181	0.0181	0.0226	0.0226	0.0272	0.0724
82.5	0.1767	0.0315	0.0181	0.0136	0.0181	0.0181	0.0226	0.0226	0.0272	0.0724
85.0	0.1359	0.0181	0.0181	0.0136	0.0181	0.0181	0.0226	0.0226	0.0272	0.0724
87.5	0.0998	0.0181	0.0181	0.0136	0.0181	0.0181	0.0226	0.0226	0.0272	0.0724
90.0	0.0500	0.0181	0.0181	0.0136	0.0181	0.0181	0.0226	0.0226	0.0272	0.0724
92.5	0.0272	0.0181	0.0181	0.0136	0.0181	0.0181	0.0226	0.0226	0.0272	0.0724
95.0	0.0272	0.0181	0.0181	0.0136	0.0181	0.0181	0.0226	0.0226	0.0272	0.0679
97.5	0.0272	0.0181	0.0181	0.0136	0.0181	0.0181	0.0226	0.0227	0.0272	0.0679
100.0	0.0272	0.0181	0.0136	0.0136	0.0181	0.0181	0.0226	0.0226	0.0272	0.0679
102.5	0.0226	0.0181	0.0136	0.0136	0.0181	0.0181	0.0226	0.0272	0.0272	0.0679
105.0	0.0226	0.0181	0.0136	0.0091	0.0181	0.0181	0.0226	0.0272	0.0272	0.0634
107.5	0.0226	0.0181	0.0136	0.0091	0.0181	0.0181	0.0226	0.0272	0.0272	0.0634
110.0	0.0226	0.0181	0.0136	0.0093	0.0181	0.0181	0.0226	0.0272	0.0272	0.0634
112.5	0.0181	0.0181	0.0136	0.0136	0.0181	0.0181	0.0226	0.0272	0.0272	0.0634
115.0	0.0136	0.0181	0.0136	0.0136	0.0181	0.0181	0.0226	0.0272	0.0272	0.0634
117.5	0.0136	0.0181	0.0136	0.0136	0.0181	0.0181	0.0226	0.0272	0.0272	0.0634
120.0	0.0136	0.0181	0.0136	0.0136	0.0181	0.0181	0.0226	0.0272	0.0272	0.0634
122.5	0.0136	0.0181	0.0136	0.0136	0.0181	0.0181	0.0226	0.0272	0.0272	0.0634
125.0	0.0136	0.0181	0.0136	0.0136	0.0181	0.0181	0.0226	0.0272	0.0272	0.0634
127.5	0.0136	0.0181	0.0136	0.0136	0.0181	0.0181	0.0226	0.0272	0.0272	0.0634
130.0	0.0136	0.0181	0.0136	0.0136	0.0181	0.0181	0.0226	0.0272	0.0272	0.0634
132.5	0.0136	0.0181	0.0136	0.0136	0.0181	0.0181	0.0226	0.0272	0.0272	0.0634
135.0	0.0136	0.0181	0.0136	0.0136	0.0181	0.0181	0.0226	0.0272	0.0317	0.0634
137.5	0.0136	0.0181	0.0136	0.0136	0.0181	0.0181	0.0226	0.0270	0.0499	0.0634
140.0	0.0181	0.0181	0.0136	0.0136	0.0181	0.0181	0.0226	0.0226	0.0543	0.0542
142.5	0.0181	0.0181	0.0136	0.0136	0.0181	0.0181	0.0226	0.0181	0.0680	0.0318
145.0	0.0181	0.0181	0.0136	0.0136	0.0181	0.0181	0.0226	0.0181	0.0589	0.0271
147.5	0.0181	0.0181	0.0136	0.0136	0.0181	0.0181	0.0226	0.0181	0.0588	0.0181
150.0	0.0181	0.0181	0.0136	0.0136	0.0181	0.0181	0.0226	0.0181	0.0498	0.0136
152.5	0.0181	0.0181	0.0136	0.0136	0.0181	0.0181	0.0226	0.0181	0.0498	0.0136
155.0	0.0181	0.0181	0.0136	0.0136	0.0181	0.0181	0.0226	0.0181	0.0363	0.0136
157.5	0.0181	0.0181	0.0136	0.0136	0.0181	0.0181	0.0226	0.0181	0.0319	0.0136
160.0	0.0181	0.0181	0.0136	0.0136	0.0181	0.0181	0.0226	0.0181	0.0317	0.0091
162.5	0.0181	0.0181	0.0136	0.0136	0.0181	0.0181	0.0226	0.0181	0.0272	0.0091
165.0	0.0181	0.0091	0.0136	0.0136	0.0181	0.0181	0.0226	0.0226	0.0227	0.0091
167.5	0.0227	0.0091	0.0136	0.0136	0.0181	0.0181	0.0226	0.0136	0.0226	0.0091
170.0	0.0136	0.0091	0.0136	0.0136	0.0181	0.0181	0.0137	0.0136	0.0182	0.0091
172.5	0.0136	0.0091	0.0136	0.0136	0.0181	0.0181	0.0136	0.0091	0.0181	0.0091
175.0	0.0136	0.0091	0.0136	0.0136	0.0181	0.0181	0.0136	0.0091	0.0181	0.0091
177.5	0.0136	0.0091	0.0136	0.0136	0.0136	0.0136	0.0045	0.0091	0.0136	0.0136
180.0	0.0136	0.0091	0.0136	0.0091	0.0136	0.0045	0.0136	0.0136	0.0091	0.0181

C Range: 0 - 360DEG
C Interval: 5.0DEG
Test Speed: HIGH
Temperature: 25DEG
Operators: luominxian
Test Date: 2017-12-08

γ Range: 0 - 180DEG
 γ Interval: 0.5DEG
Test System: EVERFINE GO-2000A_V1 SYSTEM V2.0.272
Humidity: 70%
Test Distance: 8.425m [K=1.0000]
Remarks:

Photometric Data Table [cd]

G/C	50.0	55.0	60.0	65.0	70.0	75.0	80.0	85.0	90.0	95.0
0.0	0.7158	0.6699	0.7157	0.6696	0.7116	0.6740	0.7201	0.6789	0.7204	0.6829
2.5	0.6389	0.5885	0.6294	0.5749	0.6205	0.5794	0.6161	0.5749	0.6204	0.5792
5.0	0.5707	0.5069	0.5523	0.5020	0.5391	0.4974	0.5301	0.4968	0.5257	0.5021
7.5	0.5028	0.4435	0.4802	0.4299	0.4709	0.4204	0.4530	0.4164	0.4484	0.4209
10.0	0.4483	0.3845	0.4212	0.3666	0.4033	0.3619	0.3984	0.3484	0.3894	0.3526
12.5	0.3897	0.3349	0.3625	0.3032	0.3487	0.2940	0.3309	0.2897	0.3261	0.2897
15.0	0.3532	0.2897	0.3216	0.2752	0.2988	0.2529	0.2899	0.2352	0.2900	0.2397
17.5	0.3038	0.2441	0.2762	0.2218	0.2581	0.2082	0.2446	0.2037	0.2490	0.2082
20.0	0.2671	0.2171	0.2446	0.1764	0.2264	0.1751	0.2083	0.1658	0.2082	0.1627
22.5	0.2400	0.1674	0.2085	0.1500	0.1947	0.1689	0.1814	0.1574	0.1811	0.1355
25.0	0.2038	0.1448	0.1766	0.1312	0.1585	0.1627	0.1495	0.1489	0.1541	0.0994
27.5	0.1856	0.1176	0.1494	0.0905	0.1314	0.0859	0.1268	0.0724	0.1268	0.0813
30.0	0.1630	0.0947	0.1270	0.0679	0.1132	0.0679	0.1086	0.0634	0.1042	0.0722
32.5	0.1358	0.0770	0.1086	0.0678	0.0996	0.0540	0.0860	0.0362	0.0860	0.0407
35.0	0.1177	0.0770	0.0906	0.0316	0.0771	0.0272	0.0636	0.0317	0.0679	0.0362
37.5	0.0951	0.0452	0.0725	0.0272	0.0588	0.0272	0.0588	0.0317	0.0498	0.0362
40.0	0.0770	0.0226	0.0633	0.0272	0.0453	0.0272	0.0407	0.0317	0.0453	0.0362
42.5	0.0634	0.0226	0.0453	0.0272	0.0362	0.0273	0.0318	0.0318	0.0362	0.0452
45.0	0.0498	0.0226	0.0407	0.0272	0.0317	0.0317	0.0272	0.0407	0.0362	0.0498
47.5	0.0452	0.0228	0.0317	0.0362	0.0273	0.0362	0.0272	0.0499	0.0362	0.0545
50.0	0.0318	0.0272	0.0272	0.0407	0.0272	0.0499	0.0272	0.0636	0.0362	0.0727
52.5	0.0317	0.0272	0.0272	0.0498	0.0272	0.0770	0.0361	0.0952	0.0632	0.1042
55.0	0.0318	0.0408	0.0272	0.0635	0.0404	0.0953	0.0634	0.1313	0.0902	0.1450
57.5	0.0272	0.0499	0.0272	0.0906	0.0724	0.1360	0.1127	0.1857	0.1402	0.1996
60.0	0.0272	0.0634	0.0678	0.1179	0.0995	0.1856	0.1627	0.2448	0.2126	0.2762
62.5	0.0272	0.0770	0.0769	0.1452	0.1446	0.2357	0.2260	0.3124	0.2940	0.3533
65.0	0.0272	0.0952	0.0860	0.1856	0.2035	0.2944	0.2896	0.3894	0.3711	0.4394
67.5	0.0272	0.1124	0.1266	0.2219	0.2309	0.3489	0.3620	0.4618	0.4566	0.5211
70.0	0.0452	0.1313	0.1477	0.2538	0.2893	0.4030	0.4301	0.5433	0.5383	0.6072
72.5	0.0724	0.1494	0.1674	0.2898	0.3258	0.4575	0.5023	0.6157	0.6155	0.6883
75.0	0.0724	0.1675	0.2036	0.3170	0.3711	0.5072	0.5654	0.6791	0.6832	0.7562
77.5	0.0724	0.1675	0.2137	0.3443	0.4028	0.5523	0.6065	0.7379	0.7511	0.8196
80.0	0.0770	0.1675	0.2306	0.3667	0.4345	0.5931	0.6473	0.7833	0.8013	0.8739
82.5	0.0861	0.1675	0.2442	0.3667	0.4572	0.6247	0.7012	0.8331	0.8507	0.9190
85.0	0.0860	0.1675	0.2481	0.3667	0.4978	0.6519	0.7303	0.8556	0.8736	0.9464
87.5	0.0951	0.1675	0.2716	0.3667	0.5049	0.6579	0.7334	0.8694	0.9099	0.9770
90.0	0.0951	0.1675	0.2851	0.3667	0.5079	0.6528	0.7469	0.8691	0.9369	0.9894
92.5	0.0997	0.1675	0.2935	0.3667	0.5101	0.6427	0.7482	0.8642	0.9343	0.9594
95.0	0.0996	0.1630	0.2907	0.3667	0.5092	0.6290	0.7495	0.8580	0.9309	0.9416
97.5	0.0996	0.1629	0.2879	0.3667	0.5082	0.6065	0.7508	0.8236	0.9245	0.9281
100.0	0.0996	0.1593	0.2859	0.3667	0.5072	0.5840	0.7379	0.7922	0.9054	0.9051
102.5	0.0996	0.1533	0.2816	0.3395	0.4979	0.5704	0.7064	0.7693	0.8697	0.8727
105.0	0.0996	0.1472	0.2718	0.3168	0.4711	0.5339	0.6793	0.7243	0.8288	0.8327
107.5	0.0996	0.1402	0.2626	0.3050	0.4483	0.5069	0.6386	0.6745	0.7878	0.7967
110.0	0.0996	0.1363	0.2535	0.3009	0.4256	0.4704	0.5976	0.6428	0.7426	0.7333
112.5	0.0996	0.1332	0.2354	0.2851	0.3984	0.4344	0.5527	0.5882	0.6836	0.6744
115.0	0.0996	0.1268	0.2219	0.2398	0.3667	0.3938	0.5071	0.5250	0.6249	0.6201
117.5	0.0996	0.1122	0.2082	0.2154	0.3260	0.3576	0.4663	0.4752	0.5706	0.5609
120.0	0.0996	0.0996	0.1947	0.2052	0.2989	0.3122	0.4211	0.4300	0.5162	0.5024
122.5	0.0996	0.0906	0.1857	0.1855	0.2762	0.2806	0.3848	0.3847	0.4754	0.4571
125.0	0.0996	0.0860	0.1720	0.1539	0.2536	0.2445	0.3398	0.3574	0.4258	0.4070
127.5	0.0996	0.0815	0.1530	0.1448	0.2219	0.2195	0.2988	0.2988	0.3803	0.3531
130.0	0.0951	0.0815	0.1403	0.1312	0.2037	0.2082	0.2764	0.2671	0.3396	0.3167
132.5	0.0951	0.0815	0.1313	0.1041	0.1857	0.1674	0.2445	0.2309	0.3033	0.2898
135.0	0.0951	0.0815	0.1222	0.0905	0.1684	0.1523	0.2264	0.2143	0.2762	0.2858
137.5	0.0951	0.0815	0.1178	0.0905	0.1583	0.1460	0.2128	0.1989	0.2714	0.2809
140.0	0.0951	0.0770	0.1177	0.0769	0.1494	0.1358	0.1901	0.1629	0.2310	0.2081
142.5	0.0905	0.0588	0.0951	0.0724	0.1376	0.0996	0.1693	0.1486	0.2083	0.1674
145.0	0.0816	0.0362	0.0996	0.0724	0.1211	0.0905	0.1512	0.1399	0.1766	0.1456
147.5	0.0725	0.0226	0.0860	0.0587	0.1086	0.0679	0.1268	0.0949	0.1495	0.1174
150.0	0.0588	0.0135	0.0680	0.0498	0.0862	0.0679	0.1087	0.0815	0.1313	0.0905
152.5	0.0587	0.0045	0.0634	0.0225	0.0770	0.0498	0.0995	0.0770	0.1177	0.0769
155.0	0.0453	0.0045	0.0543	0.0181	0.0634	0.0271	0.0861	0.0585	0.0996	0.0724
157.5	0.0407	0.0045	0.0407	0.0181	0.0543	0.0181	0.0724	0.0316	0.0860	0.0407
160.0	0.0407	0.0045	0.0407	0.0181	0.0455	0.0181	0.0589	0.0136	0.0681	0.0227
162.5	0.0272	0.0045	0.0317	0.0136	0.0408	0.0181	0.0498	0.0136	0.0633	0.0136
165.0	0.0272	0.0045	0.0318	0.0136	0.0317	0.0181	0.0454	0.0136	0.0454	0.0136
167.5	0.0226	0.0045	0.0226	0.0136	0.0272	0.0181	0.0362	0.0136	0.0317	0.0136
170.0	0.0226	0.0045	0.0226	0.0136	0.0272	0.0181	0.0317	0.0136	0.0317	0.0136
172.5	0.0181	0.0045	0.0181	0.0136	0.0227	0.0181	0.0272	0.0136	0.0361	0.0136
175.0	0.0181	0.0045	0.0181	0.0136	0.0181	0.0181	0.0226	0.0136	0.0272	0.0136
177.5	0.0181	0.0045	0.0136	0.0136	0.0181	0.0182	0.0226	0.0136	0.0181	0.0136
180.0	0.0136	0.0091	0.0136	0.0136	0.0136	0.0136	0.0136	0.0136	0.0091	0.0136

C Range: 0 - 360DEG
C Interval: 5.0DEG
Test Speed: HIGH
Temperature: 25DEG
Operators: luominxian
Test Date: 2017-12-08

γ Range: 0 - 180DEG
 γ Interval: 0.5DEG
Test System: EVERFINE GO-2000A_V1 SYSTEM V2.0.272
Humidity: 70%
Test Distance: 8.425m [K=1.0000]
Remarks:

Photometric Data Table [cd]

G/C	100.0	105.0	110.0	115.0	120.0	125.0	130.0	135.0	140.0	145.0
0.0	0.7248	0.6876	0.7289	0.6921	0.7383	0.7057	0.7520	0.7146	0.7608	0.7242
2.5	0.6206	0.5791	0.6251	0.5883	0.6340	0.6062	0.6566	0.6292	0.6839	0.6471
5.0	0.5299	0.5018	0.5390	0.4979	0.5525	0.5201	0.5754	0.5522	0.6023	0.5792
7.5	0.4529	0.4254	0.4666	0.4300	0.4754	0.4434	0.5070	0.4707	0.5432	0.5220
10.0	0.3942	0.3573	0.3987	0.3574	0.4121	0.3800	0.4436	0.4163	0.4798	0.4481
12.5	0.3350	0.2941	0.3486	0.3033	0.3623	0.3302	0.3896	0.3576	0.4258	0.4027
15.0	0.2809	0.2442	0.2945	0.2621	0.3079	0.2941	0.3441	0.3121	0.3803	0.3531
17.5	0.2401	0.2124	0.2536	0.2129	0.2718	0.2306	0.2946	0.2847	0.3307	0.3078
20.0	0.2083	0.1629	0.2174	0.1808	0.2310	0.2124	0.2671	0.2307	0.2990	0.2806
22.5	0.1767	0.1403	0.1816	0.1448	0.1950	0.1628	0.2266	0.1992	0.2671	0.2397
25.0	0.1540	0.1041	0.1544	0.1219	0.1678	0.1349	0.1993	0.1584	0.2355	0.2177
27.5	0.1223	0.0815	0.1358	0.0904	0.1404	0.1086	0.1721	0.1403	0.2038	0.1762
30.0	0.1086	0.0634	0.1132	0.0724	0.1223	0.0770	0.1494	0.1086	0.1766	0.1493
32.5	0.0905	0.0543	0.0951	0.0768	0.1041	0.0770	0.1270	0.0905	0.1629	0.1312
35.0	0.0681	0.0407	0.0772	0.0317	0.0907	0.0632	0.1132	0.0678	0.1358	0.1040
37.5	0.0543	0.0407	0.0634	0.0317	0.0679	0.0362	0.0905	0.0585	0.1176	0.0770
40.0	0.0453	0.0407	0.0498	0.0317	0.0543	0.0362	0.0680	0.0407	0.0951	0.0679
42.5	0.0317	0.0407	0.0407	0.0317	0.0497	0.0362	0.0634	0.0362	0.0860	0.0634
45.0	0.0317	0.0453	0.0362	0.0317	0.0362	0.0362	0.0543	0.0362	0.0680	0.0362
47.5	0.0317	0.0590	0.0362	0.0498	0.0362	0.0407	0.0407	0.0362	0.0589	0.0362
50.0	0.0317	0.0727	0.0362	0.0678	0.0362	0.0453	0.0362	0.0362	0.0499	0.0362
52.5	0.0723	0.0999	0.0631	0.0817	0.0362	0.0634	0.0362	0.0454	0.0453	0.0362
55.0	0.0860	0.1405	0.0770	0.1223	0.0631	0.0860	0.0362	0.0588	0.0407	0.0362
57.5	0.1491	0.1907	0.1312	0.1543	0.0812	0.1087	0.0494	0.0679	0.0407	0.0407
60.0	0.2172	0.2584	0.1855	0.2128	0.1357	0.1449	0.0680	0.0816	0.0407	0.0407
62.5	0.2983	0.3261	0.2528	0.2582	0.1765	0.1768	0.0904	0.0996	0.0407	0.0499
65.0	0.3846	0.4076	0.3211	0.3214	0.2173	0.2128	0.1221	0.1178	0.0543	0.0543
67.5	0.4702	0.4890	0.3891	0.3849	0.2852	0.2581	0.1448	0.1405	0.0679	0.0588
70.0	0.5562	0.5614	0.4571	0.4439	0.3259	0.2945	0.1808	0.1585	0.0724	0.0724
72.5	0.6382	0.6386	0.5250	0.4983	0.3712	0.3351	0.2173	0.1766	0.0724	0.0815
75.0	0.7058	0.7065	0.5883	0.5525	0.4537	0.3622	0.2286	0.1992	0.0905	0.0860
77.5	0.7649	0.7651	0.6443	0.5978	0.4594	0.3984	0.2535	0.2129	0.0996	0.0951
80.0	0.8148	0.8194	0.7014	0.6339	0.4978	0.4165	0.2985	0.2310	0.1086	0.1059
82.5	0.8643	0.8603	0.7288	0.6703	0.5115	0.4428	0.2999	0.2400	0.1304	0.1073
85.0	0.8961	0.8918	0.7693	0.6973	0.5341	0.4574	0.3029	0.2490	0.1358	0.1086
87.5	0.9290	0.9045	0.7967	0.7167	0.5658	0.4589	0.3213	0.2490	0.1378	0.1177
90.0	0.9393	0.9106	0.8094	0.7202	0.5749	0.4605	0.3484	0.2490	0.1398	0.1177
92.5	0.9505	0.9052	0.8155	0.7236	0.5807	0.4621	0.3666	0.2490	0.1417	0.1177
95.0	0.9520	0.9008	0.8166	0.7155	0.5824	0.4636	0.3666	0.2490	0.1437	0.1177
97.5	0.9511	0.8917	0.8177	0.7151	0.5841	0.4652	0.3672	0.2490	0.1493	0.1177
100.0	0.9415	0.8698	0.8188	0.6926	0.5858	0.4527	0.3685	0.2490	0.1493	0.1177
102.5	0.9056	0.8599	0.8106	0.6745	0.5875	0.4526	0.3699	0.2490	0.1493	0.1177
105.0	0.8737	0.8102	0.7788	0.6518	0.5814	0.4423	0.3712	0.2465	0.1494	0.1177
107.5	0.8330	0.7650	0.7515	0.6202	0.5704	0.4391	0.3669	0.2351	0.1494	0.1177
110.0	0.7786	0.7241	0.7063	0.5840	0.5432	0.4162	0.3576	0.2206	0.1501	0.1177
112.5	0.7199	0.6652	0.6654	0.5657	0.5206	0.3803	0.3427	0.2176	0.1510	0.1177
115.0	0.6704	0.6197	0.6161	0.5114	0.4889	0.3621	0.3313	0.2146	0.1518	0.1177
117.5	0.6158	0.5702	0.5749	0.4843	0.4573	0.3469	0.3213	0.2107	0.1527	0.1177
120.0	0.5614	0.5115	0.5251	0.4345	0.4256	0.3168	0.3034	0.2037	0.1536	0.1268
122.5	0.5029	0.4662	0.4798	0.3982	0.3939	0.3042	0.2807	0.1919	0.1575	0.1278
125.0	0.4529	0.4207	0.4301	0.3620	0.3667	0.2898	0.2761	0.1738	0.1553	0.1288
127.5	0.4121	0.3621	0.3939	0.3257	0.3440	0.2579	0.2603	0.1628	0.1624	0.1299
130.0	0.3669	0.3257	0.3577	0.2898	0.3169	0.2368	0.2445	0.1609	0.1607	0.1309
132.5	0.3395	0.3158	0.3259	0.2893	0.2853	0.2219	0.2331	0.1591	0.1590	0.1342
135.0	0.3079	0.3141	0.3124	0.2870	0.2761	0.2226	0.2266	0.1573	0.1573	0.1376
137.5	0.2807	0.3123	0.3076	0.2875	0.2626	0.1992	0.2483	0.1554	0.1556	0.1358
140.0	0.2491	0.2218	0.2627	0.2082	0.2354	0.1675	0.2038	0.1536	0.1539	0.0995
142.5	0.2219	0.1810	0.2264	0.1718	0.2042	0.1508	0.1811	0.1176	0.1407	0.0815
145.0	0.1947	0.1587	0.1993	0.1493	0.1900	0.1431	0.1630	0.0996	0.1295	0.0814
147.5	0.1632	0.1404	0.1723	0.1264	0.1630	0.0996	0.1404	0.0770	0.1177	0.0770
150.0	0.1440	0.0996	0.1494	0.0905	0.1403	0.0814	0.1232	0.0724	0.1041	0.0633
152.5	0.1222	0.0816	0.1314	0.0770	0.1178	0.0678	0.1086	0.0678	0.0906	0.0316
155.0	0.0996	0.0815	0.1078	0.0770	0.1041	0.0635	0.0906	0.0318	0.0770	0.0181
157.5	0.0906	0.0721	0.0951	0.0590	0.0905	0.0362	0.0860	0.0272	0.0679	0.0136
160.0	0.0770	0.0272	0.0725	0.0272	0.0637	0.0226	0.0723	0.0181	0.0545	0.0136
162.5	0.0635	0.0181	0.0634	0.0181	0.0634	0.0226	0.0589	0.0181	0.0453	0.0136
165.0	0.0498	0.0181	0.0544	0.0181	0.0498	0.0226	0.0543	0.0181	0.0453	0.0136
167.5	0.0453	0.0181	0.0453	0.0181	0.0407	0.0226	0.0453	0.0181	0.0362	0.0136
170.0	0.0362	0.0181	0.0362	0.0181	0.0407	0.0226	0.0362	0.0181	0.0362	0.0136
172.5	0.0318	0.0181	0.0317	0.0181	0.0363	0.0226	0.0317	0.0180	0.0227	0.0136
175.0	0.0316	0.0181	0.0317	0.0181	0.0317	0.0226	0.0317	0.0136	0.0226	0.0136
177.5	0.0226	0.0181	0.0226	0.0181	0.0226	0.0181	0.0272	0.0136	0.0227	0.0136
180.0	0.0181	0.0226	0.0181	0.0181	0.0181	0.0181	0.0226	0.0136	0.0181	0.0136

C Range: 0 - 360DEG
 C Interval: 5.0DEG
 Test Speed: HIGH
 Temperature: 25DEG
 Operators: luominxian
 Test Date: 2017-12-08

γ Range: 0 - 180DEG
 γ Interval: 0.5DEG
 Test System: EVERFINE GO-2000A_V1 SYSTEM V2.0.272
 Humidity: 70%
 Test Distance: 8.425m [K=1.0000]
 Remarks:

Photometric Data Table [cd]

G/C	150.0	155.0	160.0	165.0	170.0	175.0	180.0	185.0	190.0	195.0
0.0	0.7700	0.7333	0.7880	0.7469	0.7924	0.7556	0.7017	0.7153	0.7288	0.6926
2.5	0.7063	0.6745	0.7336	0.7243	0.7561	0.7287	0.7015	0.7197	0.7294	0.7243
5.0	0.6432	0.6111	0.6794	0.6609	0.7202	0.7150	0.6857	0.7309	0.7309	0.7387
7.5	0.5843	0.5655	0.6208	0.6245	0.6881	0.6787	0.6744	0.7333	0.7324	0.7559
10.0	0.5254	0.5112	0.5840	0.5748	0.6474	0.6472	0.6513	0.7335	0.7261	0.7782
12.5	0.4755	0.4570	0.5345	0.5314	0.6113	0.6155	0.6383	0.7244	0.7164	0.7764
15.0	0.4303	0.4163	0.4934	0.5024	0.5751	0.5749	0.6074	0.7017	0.7106	0.7745
17.5	0.3894	0.3662	0.4527	0.4479	0.5387	0.5476	0.5750	0.6791	0.6880	0.7726
20.0	0.3486	0.3346	0.4122	0.4117	0.4937	0.5069	0.5522	0.6519	0.6653	0.7707
22.5	0.3169	0.3043	0.3803	0.3666	0.4664	0.4705	0.5159	0.6293	0.6473	0.7651
25.0	0.2808	0.2837	0.3443	0.3486	0.4301	0.4344	0.4980	0.5976	0.6246	0.7471
27.5	0.2535	0.2262	0.3082	0.3031	0.3939	0.4028	0.4572	0.5704	0.5930	0.7246
30.0	0.2219	0.2062	0.2807	0.2918	0.3624	0.3710	0.4301	0.5432	0.5793	0.7152
32.5	0.1947	0.1765	0.2538	0.2480	0.3306	0.3484	0.3938	0.5073	0.5431	0.6928
35.0	0.1723	0.1690	0.2222	0.2211	0.3036	0.3078	0.3750	0.4844	0.5160	0.6746
37.5	0.1511	0.1656	0.2038	0.1991	0.2762	0.2935	0.3711	0.4573	0.4965	0.6564
40.0	0.1313	0.1492	0.1767	0.1712	0.2445	0.2923	0.3603	0.4437	0.4898	0.6159
42.5	0.1177	0.0905	0.1661	0.1690	0.2422	0.2911	0.3666	0.4212	0.4845	0.5481
45.0	0.1040	0.0815	0.1623	0.1632	0.2400	0.2898	0.3712	0.4345	0.5387	0.5607
47.5	0.0997	0.0815	0.1573	0.1584	0.2378	0.2805	0.3700	0.4345	0.5615	0.6382
50.0	0.0906	0.0815	0.1494	0.1404	0.2355	0.2626	0.3686	0.4326	0.5713	0.6699
52.5	0.0724	0.0679	0.1359	0.1376	0.2219	0.2532	0.3672	0.4301	0.5703	0.6970
55.0	0.0544	0.0316	0.1177	0.1176	0.2082	0.2349	0.3484	0.4276	0.5513	0.7279
57.5	0.0453	0.0272	0.0996	0.0949	0.1948	0.2218	0.3077	0.4251	0.5250	0.7380
60.0	0.0317	0.0272	0.0815	0.0635	0.1748	0.2172	0.2897	0.4226	0.5115	0.7379
62.5	0.0317	0.0272	0.0590	0.0588	0.1495	0.1718	0.2760	0.4112	0.5010	0.7289
65.0	0.0317	0.0317	0.0453	0.0270	0.1268	0.1403	0.2400	0.3849	0.4934	0.7192
67.5	0.0317	0.0317	0.0272	0.0181	0.1041	0.1267	0.2097	0.3577	0.4570	0.7062
70.0	0.0317	0.0317	0.0272	0.0181	0.0726	0.0948	0.1811	0.3351	0.4300	0.6882
72.5	0.0317	0.0317	0.0272	0.0181	0.0498	0.0724	0.1492	0.3035	0.4072	0.6655
75.0	0.0317	0.0362	0.0272	0.0226	0.0317	0.0495	0.1183	0.2720	0.3710	0.6383
77.5	0.0317	0.0362	0.0226	0.0226	0.0272	0.0226	0.0904	0.2490	0.3439	0.6021
80.0	0.0317	0.0407	0.0226	0.0226	0.0226	0.0226	0.0634	0.2082	0.3086	0.5659
82.5	0.0317	0.0407	0.0226	0.0226	0.0226	0.0226	0.0180	0.1632	0.2843	0.5252
85.0	0.0317	0.0407	0.0226	0.0227	0.0226	0.0226	0.0091	0.1268	0.2125	0.4663
87.5	0.0317	0.0407	0.0226	0.0272	0.0226	0.0226	0.0091	0.0771	0.1692	0.4169
90.0	0.0317	0.0407	0.0226	0.0272	0.0226	0.0226	0.0091	0.0408	0.1257	0.3491
92.5	0.0317	0.0407	0.0226	0.0272	0.0226	0.0226	0.0091	0.0136	0.0676	0.2853
95.0	0.0362	0.0407	0.0226	0.0272	0.0226	0.0226	0.0091	0.0136	0.0091	0.2086
97.5	0.0407	0.0407	0.0226	0.0272	0.0226	0.0226	0.0091	0.0136	0.0091	0.1317
100.0	0.0407	0.0407	0.0226	0.0272	0.0136	0.0226	0.0091	0.0136	0.0091	0.0546
102.5	0.0407	0.0407	0.0226	0.0272	0.0136	0.0226	0.0091	0.0136	0.0091	0.0136
105.0	0.0453	0.0407	0.0226	0.0272	0.0136	0.0226	0.0091	0.0136	0.0136	0.0136
107.5	0.0498	0.0408	0.0226	0.0272	0.0136	0.0228	0.0226	0.0136	0.0136	0.0136
110.0	0.0498	0.0543	0.0226	0.0272	0.0136	0.0272	0.0226	0.0136	0.0136	0.0136
112.5	0.0588	0.0543	0.0226	0.0317	0.0136	0.0272	0.0227	0.0136	0.0181	0.0136
115.0	0.0724	0.0588	0.0226	0.0317	0.0136	0.0272	0.0272	0.0136	0.0272	0.0136
117.5	0.0770	0.0634	0.0226	0.0317	0.0136	0.0272	0.0316	0.0136	0.0317	0.0136
120.0	0.0770	0.0634	0.0226	0.0317	0.0136	0.0317	0.0453	0.0136	0.0362	0.0136
122.5	0.0770	0.0634	0.0226	0.0362	0.0136	0.0317	0.0499	0.0136	0.0453	0.0136
125.0	0.0770	0.0634	0.0226	0.0407	0.0180	0.0317	0.0543	0.0136	0.0542	0.0136
127.5	0.0770	0.0725	0.0226	0.0498	0.0181	0.0317	0.0725	0.0181	0.0634	0.0136
130.0	0.0770	0.0724	0.0226	0.0588	0.0181	0.0317	0.0770	0.0766	0.0861	0.0407
132.5	0.0770	0.0724	0.0273	0.0724	0.0181	0.0317	0.0770	0.0815	0.1140	0.0814
135.0	0.0770	0.0724	0.0496	0.0814	0.0181	0.0317	0.0136	0.0934	0.0991	0.0996
137.5	0.0770	0.0724	0.0679	0.0770	0.0361	0.0317	0.0136	0.0456	0.0226	0.0726
140.0	0.0770	0.0725	0.0770	0.0586	0.0317	0.0316	0.0136	0.0181	0.0134	0.0454
142.5	0.0770	0.0679	0.0770	0.0362	0.0317	0.0226	0.0136	0.0136	0.0045	0.0273
145.0	0.0770	0.0588	0.0770	0.0315	0.0317	0.0226	0.0135	0.0136	0.0045	0.0136
147.5	0.0770	0.0406	0.0727	0.0181	0.0317	0.0181	0.0091	0.0091	0.0045	0.0091
150.0	0.0770	0.0272	0.0634	0.0181	0.0317	0.0181	0.0091	0.0091	0.0045	0.0091
152.5	0.0769	0.0181	0.0591	0.0181	0.0317	0.0181	0.0091	0.0091	0.0091	0.0091
155.0	0.0634	0.0181	0.0543	0.0181	0.0317	0.0181	0.0091	0.0091	0.0045	0.0091
157.5	0.0498	0.0181	0.0498	0.0181	0.0317	0.0181	0.0091	0.0091	0.0045	0.0091
160.0	0.0498	0.0181	0.0407	0.0181	0.0317	0.0181	0.0091	0.0091	0.0045	0.0045
162.5	0.0408	0.0181	0.0407	0.0181	0.0317	0.0181	0.0091	0.0091	0.0045	0.0045
165.0	0.0364	0.0181	0.0362	0.0181	0.0317	0.0181	0.0091	0.0091	0.0045	0.0045
167.5	0.0317	0.0181	0.0318	0.0181	0.0317	0.0181	0.0045	0.0091	0.0045	0.0045
170.0	0.0317	0.0181	0.0272	0.0181	0.0272	0.0181	0.0045	0.0136	0.0045	0.0045
172.5	0.0272	0.0181	0.0272	0.0181	0.0226	0.0181	0.0045	0.0091	0.0091	0.0045
175.0	0.0317	0.0181	0.0272	0.0181	0.0226	0.0181	0.0045	0.0091	0.0091	0.0045
177.5	0.0226	0.0181	0.0181	0.0181	0.0226	0.0181	0.0045	0.0045	0.0091	0.0045
180.0	0.0181	0.0181	0.0136	0.0181	0.0226	0.0181	0.0136	0.0045	0.0045	0.0136

C Range: 0 - 360DEG
 C Interval: 5.0DEG
 Test Speed: HIGH
 Temperature: 25DEG
 Operators: luominxian
 Test Date: 2017-12-08

γ Range: 0 - 180DEG
 γ Interval: 0.5DEG
 Test System: EVERFINE GO-2000A_V1 SYSTEM V2.0.272
 Humidity: 70%
 Test Distance: 8.425m [K=1.0000]
 Remarks:

Photometric Data Table [cd]

G/C	200.0	205.0	210.0	215.0	220.0	225.0	230.0	235.0	240.0	245.0
0.0	0.7334	0.6834	0.7198	0.6699	0.7154	0.6694	0.7158	0.6699	0.7157	0.6696
2.5	0.7653	0.7241	0.7697	0.7243	0.7832	0.7422	0.7968	0.7603	0.8107	0.7864
5.0	0.7922	0.7647	0.8195	0.7921	0.8467	0.8190	0.8829	0.8645	0.9059	0.8827
7.5	0.8212	0.8011	0.8648	0.8507	0.9148	0.9006	0.9781	0.9913	1.051	1.058
10.0	0.8375	0.8284	0.9055	0.9049	1.010	1.050	1.173	1.244	1.360	1.437
12.5	0.8465	0.8735	0.9599	1.005	1.169	1.294	1.498	1.656	1.842	2.027
15.0	0.8547	0.8872	1.055	1.190	1.432	1.660	1.959	2.282	2.572	2.893
17.5	0.8629	0.9412	1.173	1.407	1.758	2.129	2.579	3.072	3.532	4.034
20.0	0.8693	1.009	1.318	1.666	2.156	2.720	3.334	4.053	4.732	5.446
22.5	0.8738	1.077	1.463	1.941	2.611	3.404	4.247	5.220	6.181	7.162
25.0	0.8738	1.145	1.598	2.191	3.061	4.105	5.256	6.543	7.822	9.163
27.5	0.8737	1.199	1.711	2.408	3.450	4.775	6.277	7.969	9.690	11.51
30.0	0.8737	1.245	1.806	2.589	3.776	5.369	7.262	9.429	11.72	14.23
32.5	0.8721	1.272	1.879	2.734	4.048	5.921	8.254	10.96	13.93	17.28
35.0	0.8680	1.299	1.951	2.870	4.293	6.449	9.343	12.70	16.32	20.64
37.5	0.8647	1.313	2.006	2.983	4.536	7.006	10.63	14.83	19.17	24.43
40.0	0.8370	1.311	2.029	3.087	4.754	7.528	11.97	17.32	22.60	28.79
42.5	0.7392	1.205	1.937	3.146	4.926	7.969	13.29	20.11	26.62	33.91
45.0	0.7247	1.055	1.720	2.907	4.875	8.270	14.46	23.00	31.04	39.72
47.5	0.7787	1.058	1.634	2.658	4.558	8.042	15.24	25.81	35.68	45.99
50.0	0.8377	1.082	1.657	2.585	4.259	7.678	15.19	27.84	40.27	52.51
52.5	0.8875	1.105	1.675	2.585	4.210	7.302	14.98	28.78	44.04	58.94
55.0	0.9371	1.136	1.685	2.604	4.232	7.270	14.71	29.47	46.17	64.86
57.5	0.9554	1.172	1.702	2.612	4.251	7.300	14.76	30.12	47.91	68.98
60.0	0.9566	1.236	1.716	2.621	4.273	7.324	14.87	30.89	49.44	72.12
62.5	0.9578	1.285	1.748	2.639	4.292	7.334	14.97	31.88	50.91	74.93
65.0	0.9590	1.310	1.779	2.680	4.301	7.342	15.03	32.74	52.68	77.63
67.5	0.9524	1.322	1.820	2.680	4.309	7.329	15.07	33.48	54.46	80.42
70.0	0.9372	1.359	1.861	2.707	4.310	7.306	15.04	34.15	56.18	83.53
72.5	0.9316	1.365	1.924	2.729	4.306	7.266	14.99	34.74	57.79	86.32
75.0	0.9054	1.372	1.969	2.757	4.291	7.198	14.87	35.20	59.25	88.74
77.5	0.8736	1.371	1.996	2.779	4.273	7.112	14.71	35.57	60.47	90.78
80.0	0.8646	1.358	1.992	2.811	4.251	7.008	14.48	35.83	61.64	92.34
82.5	0.8147	1.331	1.975	2.829	4.210	6.885	14.21	35.88	62.40	93.52
85.0	0.7601	1.281	1.955	2.856	4.169	6.737	13.87	35.74	63.00	94.08
87.5	0.7016	1.222	1.901	2.865	4.110	6.564	13.45	35.43	63.27	94.38
90.0	0.6337	1.150	1.833	2.834	4.038	6.357	12.98	34.85	63.17	94.10
92.5	0.5519	1.073	1.752	2.798	3.997	6.220	12.61	34.59	63.33	94.39
95.0	0.4611	0.9733	1.652	2.707	3.938	5.822	11.60	32.42	60.46	90.49
97.5	0.3575	0.8560	1.544	2.585	3.893	5.375	9.960	27.20	51.14	77.02
100.0	0.2483	0.7247	1.389	2.413	3.770	5.016	8.355	20.88	39.35	59.65
102.5	0.1310	0.5660	1.209	2.192	3.535	4.809	6.967	14.49	26.90	41.31
105.0	0.0181	0.3992	0.9857	1.930	3.203	4.590	5.952	9.387	15.94	24.47
107.5	0.0181	0.2178	0.7459	1.639	2.815	4.185	5.294	6.966	9.803	13.52
110.0	0.0182	0.0593	0.4787	1.306	2.383	3.653	4.842	5.789	7.364	9.321
112.5	0.0226	0.0227	0.2124	0.9334	1.919	3.052	4.223	4.979	6.005	7.226
115.0	0.0317	0.0226	0.0272	0.5436	1.429	2.433	3.478	4.261	4.993	5.840
117.5	0.0317	0.0226	0.0361	0.1697	0.8989	1.803	2.717	3.465	4.074	4.673
120.0	0.0407	0.0226	0.0317	0.0318	0.3730	1.188	1.973	2.642	3.273	3.747
122.5	0.0453	0.0226	0.0317	0.0226	0.0451	0.5583	1.277	1.862	2.444	2.944
125.0	0.0499	0.0226	0.0453	0.0226	0.0453	0.0645	0.5856	1.141	1.652	2.086
127.5	0.0634	0.0226	0.0635	0.0226	0.0545	0.0498	0.0679	0.4784	0.9218	1.309
130.0	0.0864	0.0403	0.0818	0.0227	0.0815	0.0498	0.0952	0.0996	0.2939	0.6528
132.5	0.0951	0.0768	0.0860	0.0679	0.1044	0.0723	0.1090	0.0996	0.1315	0.1598
135.0	0.0858	0.0860	0.0679	0.0815	0.0677	0.1413	0.0767	0.1316	0.0905	0.1404
137.5	0.0271	0.0728	0.0181	0.0547	0.0181	0.0593	0.0091	0.0589	0.0316	0.0911
140.0	0.0045	0.0453	0.0091	0.0320	0.0136	0.0318	0.0091	0.0320	0.0136	0.0412
142.5	0.0090	0.0272	0.0091	0.0183	0.0136	0.0226	0.0091	0.0271	0.0136	0.0363
145.0	0	0.0136	0.0091	0.0002	0.0091	0.0136	0.0091	0.0137	0.0136	0.0227
147.5	0	0.0136	0.0091	0	0.0045	0.0180	0.0091	0.0136	0.0136	0.0180
150.0	0	0.0136	0.0091	0	0.0045	0.0136	0.0091	0.0091	0.0136	0.0136
152.5	0	0.0091	0.0091	0	0.0091	0.0135	0.0091	0.0091	0.0136	0.0136
155.0	0	0.0091	0.0091	0	0.0091	0.0091	0.0091	0.0091	0.0136	0.0136
157.5	0	0.0091	0.0091	0	0.0091	0.0091	0.0091	0.0091	0.0136	0.0136
160.0	0.0046	0.0091	0.0091	0	0.0091	0.0091	0.0091	0.0091	0.0136	0.0136
162.5	0.0091	0.0091	0.0091	0	0.0091	0.0091	0.0091	0.0091	0.0136	0.0046
165.0	0.0179	0.0091	0.0091	0	0.0091	0.0091	0.0091	0.0091	0.0136	0.0045
167.5	0.0137	0.0091	0.0091	0	0.0091	0.0091	0.0091	0.0136	0.0136	0.0045
170.0	0.0091	0.0091	0.0090	0	0.0136	0.0091	0.0180	0.0136	0.0136	0.0045
172.5	0.0091	0.0091	0.0045	0	0.0136	0.0135	0.0136	0.0136	0.0180	0.0045
175.0	0.0091	0.0091	0.0091	0	0.0091	0.0091	0.0136	0.0136	0.0136	0.0091
177.5	0.0091	0.0091	0.0091	0	0.0136	0.0091	0.0091	0.0136	0.0136	0.0091
180.0	0.0136	0.0136	0.0091	0	0.0136	0.0091	0.0136	0.0136	0.0136	0.0136

C Range: 0 - 360DEG
 C Interval: 5.0DEG
 Test Speed: HIGH
 Temperature: 25DEG
 Operators: luominxian
 Test Date: 2017-12-08

γ Range: 0 - 180DEG
 γ Interval: 0.5DEG
 Test System: EVERFINE GO-2000A_V1 SYSTEM V2.0.272
 Humidity: 70%
 Test Distance: 8.425m [K=1.0000]
 Remarks:

Photometric Data Table [cd]

G/C	250.0	255.0	260.0	265.0	270.0	275.0	280.0	285.0	290.0	295.0
0.0	0.7116	0.6740	0.7201	0.6789	0.7204	0.6829	0.7248	0.6876	0.7289	0.6921
2.5	0.8240	0.7831	0.8332	0.7959	0.8380	0.8009	0.8422	0.8054	0.8426	0.8057
5.0	0.9330	0.9088	0.9510	0.9276	0.9646	0.9276	0.9690	0.9317	0.9646	0.9273
7.5	1.127	1.138	1.191	1.213	1.233	1.225	1.232	1.202	1.195	1.149
10.0	1.538	1.616	1.680	1.727	1.748	1.769	1.746	1.714	1.659	1.587
12.5	2.197	2.365	2.469	2.579	2.604	2.644	2.585	2.542	2.399	2.280
15.0	3.149	3.423	3.601	3.773	3.830	3.877	3.787	3.697	3.487	3.287
17.5	4.451	4.829	5.110	5.369	5.449	5.517	5.385	5.241	4.933	4.608
20.0	6.046	6.629	7.016	7.398	7.512	7.609	7.403	7.188	6.726	6.270
22.5	7.968	8.774	9.337	9.867	10.04	10.14	9.872	9.559	8.934	8.279
25.0	10.29	11.34	12.11	12.83	13.07	13.22	12.84	12.41	11.52	10.64
27.5	12.99	14.40	15.43	16.40	16.80	17.00	16.46	15.79	14.63	13.43
30.0	16.31	18.09	19.37	20.68	21.37	21.62	20.80	19.80	18.31	16.78
32.5	20.24	22.61	24.03	25.67	26.89	27.22	25.92	24.52	22.78	20.85
35.0	24.78	28.00	29.65	31.65	33.39	33.89	31.94	30.12	28.15	25.55
37.5	29.95	34.30	36.37	38.67	40.94	41.57	39.04	36.80	34.43	30.85
40.0	35.63	41.29	44.14	46.91	49.43	50.06	47.26	44.55	41.36	36.58
42.5	42.02	48.87	52.73	56.27	58.94	59.46	56.55	53.12	48.87	42.84
45.0	49.18	57.12	62.04	66.70	69.20	69.54	66.71	62.44	56.77	49.74
47.5	57.04	65.88	71.99	77.65	80.00	80.37	77.50	72.05	65.37	57.31
50.0	65.18	75.05	82.30	88.91	91.30	91.44	88.56	82.20	74.15	64.99
52.5	73.36	84.36	93.03	100.2	102.7	102.6	99.56	92.59	83.11	72.74
55.0	81.39	93.72	103.9	111.5	114.1	113.8	110.3	103.1	92.00	80.19
57.5	88.92	103.0	114.7	122.7	125.6	125.3	121.1	113.6	100.8	87.29
60.0	95.45	112.0	125.6	134.0	137.2	136.6	132.0	123.7	109.5	93.75
62.5	99.80	120.8	136.1	145.1	149.0	148.4	142.9	133.7	117.8	98.15
65.0	103.4	128.6	146.2	156.4	160.7	160.1	153.8	143.4	125.6	101.6
67.5	106.7	134.3	155.9	167.6	172.5	172.0	164.8	152.6	131.4	104.8
70.0	110.0	139.1	164.6	178.7	184.4	183.8	175.5	161.0	136.0	107.7
72.5	113.6	143.5	171.0	189.0	196.2	195.2	185.6	167.4	140.2	110.8
75.0	117.2	147.6	176.0	198.3	207.2	206.1	194.9	172.0	144.0	114.1
77.5	120.4	151.3	180.2	205.9	217.5	215.9	202.6	176.1	147.7	117.3
80.0	123.3	154.6	183.8	210.6	226.1	224.7	206.9	179.4	150.9	120.0
82.5	125.6	157.2	186.5	213.8	232.4	231.5	210.3	182.4	153.3	122.1
85.0	127.0	158.8	188.7	215.3	235.2	234.0	212.1	184.7	154.9	123.6
87.5	127.8	159.7	189.9	215.3	233.9	232.8	212.7	185.9	155.5	124.0
90.0	127.4	159.4	189.6	214.1	229.9	228.9	212.0	185.7	155.2	123.4
92.5	127.5	159.6	189.5	212.8	222.9	222.6	210.9	185.7	155.0	123.2
95.0	123.1	154.4	184.3	205.7	211.5	211.1	205.1	181.3	151.7	119.6
97.5	105.3	133.2	160.0	176.9	180.7	180.2	178.4	158.3	132.6	103.4
100.0	82.29	104.8	127.2	137.7	141.9	141.2	139.8	126.5	105.8	81.64
102.5	58.02	74.73	92.63	97.92	102.8	102.1	100.5	92.70	77.18	58.94
105.0	35.46	46.18	57.07	61.02	65.49	65.01	63.16	58.76	49.39	37.26
107.5	18.67	23.87	28.10	31.18	34.30	34.09	32.83	29.54	26.16	20.09
110.0	11.79	13.82	15.56	17.43	18.89	18.83	18.08	16.09	15.10	12.55
112.5	8.716	9.535	11.08	12.33	13.23	13.24	12.67	11.37	10.35	9.225
115.0	6.692	7.468	8.663	9.555	10.18	10.19	9.788	8.870	7.870	7.181
117.5	5.264	6.078	6.946	7.595	8.042	8.054	7.784	7.131	6.375	5.632
120.0	4.249	4.842	5.496	5.987	6.310	6.333	6.140	5.686	5.126	4.496
122.5	3.467	3.901	4.356	4.653	4.887	4.910	4.808	4.507	4.164	3.694
125.0	2.531	2.905	3.288	3.546	3.740	3.767	3.694	3.455	3.164	2.748
127.5	1.645	1.944	2.234	2.419	2.572	2.596	2.556	2.374	2.164	1.832
130.0	0.9255	1.162	1.368	1.567	1.607	1.617	1.588	1.466	1.293	1.038
132.5	0.3861	0.8762	0.7431	0.8183	0.8610	0.8978	0.8568	0.7864	0.6384	0.4429
135.0	0.0950	0.1633	0.1850	0.3022	0.3431	0.3827	0.3275	0.3005	0.1992	0.2040
137.5	0.0543	0.0908	0.0671	0.1132	0.0721	0.1225	0.0768	0.1276	0.0769	0.1364
140.0	0.0136	0.0543	0.0136	0.0545	0.0136	0.0679	0.0136	0.0544	0.0135	0.0634
142.5	0.0136	0.0318	0.0136	0.0320	0.0136	0.0273	0.0136	0.0181	0.0045	0.0136
145.0	0.0136	0.0317	0.0136	0.0272	0.0136	0.0226	0.0136	0.0181	0.0045	0.0136
147.5	0.0136	0.0226	0.0136	0.0226	0.0136	0.0226	0.0091	0.0225	0.0045	0.0136
150.0	0.0136	0.0181	0.0136	0.0183	0.0136	0.0226	0.0091	0.0136	0	0.0091
152.5	0.0136	0.0181	0.0136	0.0181	0.0136	0.0136	0.0091	0.0136	0	0.0091
155.0	0.0136	0.0136	0.0136	0.0181	0.0136	0.0136	0.0181	0.0136	0	0.0091
157.5	0.0136	0.0136	0.0136	0.0226	0.0136	0.0136	0.0136	0.0136	0	0.0091
160.0	0.0136	0.0136	0.0181	0.0136	0.0136	0.0136	0.0136	0.0136	0	0.0091
162.5	0.0134	0.0136	0.0181	0.0136	0.0136	0.0136	0.0136	0.0136	0	0.0091
165.0	0.0091	0.0136	0.0181	0.0136	0.0136	0.0136	0.0136	0.0136	0.0136	0.0091
167.5	0.0091	0.0136	0.0181	0.0136	0.0136	0.0136	0.0136	0.0136	0.0136	0.0091
170.0	0.0091	0.0136	0.0181	0.0136	0.0136	0.0136	0.0136	0.0136	0.0181	0.0136
172.5	0.0136	0.0136	0.0181	0.0136	0.0136	0.0136	0.0136	0.0136	0.0136	0.0136
175.0	0.0136	0.0136	0.0181	0.0136	0.0136	0.0136	0.0136	0.0136	0.0136	0.0091
177.5	0.0136	0.0136	0.0181	0.0136	0.0136	0.0136	0.0181	0.0136	0.0136	0.0091
180.0	0.0136	0.0136	0.0181	0.0136	0.0136	0.0181	0.0136	0.0136	0.0136	0.0045

C Range: 0 - 360DEG
 C Interval: 5.0DEG
 Test Speed: HIGH
 Temperature: 25DEG
 Operators: luominxian
 Test Date: 2017-12-08

γ Range: 0 - 180DEG
 γ Interval: 0.5DEG
 Test System: EVERFINE GO-2000A_V1 SYSTEM V2.0.272
 Humidity: 70%
 Test Distance: 8.425m [K=1.0000]
 Remarks:

Photometric Data Table [cd]

G/C	300.0	305.0	310.0	315.0	320.0	325.0	330.0	335.0	340.0	345.0
0.0	0.7383	0.7057	0.7520	0.7146	0.7608	0.7242	0.7700	0.7333	0.7880	0.7469
2.5	0.8467	0.8054	0.8470	0.8011	0.8511	0.8008	0.8468	0.7966	0.8375	0.7876
5.0	0.9601	0.9276	0.9513	0.9044	0.9370	0.8827	0.9148	0.8600	0.8828	0.8238
7.5	1.142	1.086	1.087	1.022	1.032	0.9683	0.9830	0.9233	0.9283	0.8734
10.0	1.515	1.429	1.360	1.253	1.204	1.090	1.060	0.9687	0.9690	0.8870
12.5	2.119	1.967	1.800	1.629	1.495	1.307	1.201	1.050	1.005	0.9098
15.0	3.010	2.761	2.455	2.167	1.884	1.610	1.405	1.181	1.059	0.9371
17.5	4.188	3.779	3.292	2.847	2.400	1.987	1.671	1.343	1.136	0.9493
20.0	5.662	5.026	4.320	3.670	3.016	2.437	1.944	1.507	1.205	0.9461
22.5	7.388	6.513	5.538	4.612	3.714	2.928	2.234	1.647	1.277	0.9733
25.0	9.444	8.258	6.909	5.670	4.462	3.415	2.508	1.797	1.345	0.9959
27.5	11.84	10.23	8.418	6.761	5.189	3.841	2.744	1.937	1.421	1.016
30.0	14.67	12.41	10.00	7.834	5.850	4.204	2.947	2.046	1.471	1.023
32.5	17.90	14.74	11.63	8.891	6.449	4.526	3.125	2.145	1.508	1.023
35.0	21.44	17.26	13.39	10.04	7.054	4.816	3.287	2.227	1.541	1.015
37.5	25.30	20.07	15.45	11.31	7.654	5.092	3.432	2.304	1.545	1.004
40.0	29.62	23.39	17.87	12.66	8.219	5.337	3.550	2.349	1.539	0.9941
42.5	34.56	27.21	20.52	13.94	8.698	5.549	3.625	2.282	1.385	0.8788
45.0	40.08	31.38	23.22	15.10	9.049	5.510	3.395	2.056	1.242	0.8222
47.5	46.08	35.76	25.81	15.87	8.896	5.198	3.123	1.932	1.254	0.8374
50.0	52.27	40.04	27.82	15.89	8.542	4.898	3.055	1.925	1.277	0.8779
52.5	58.42	43.67	28.88	15.68	8.235	4.866	3.038	1.920	1.281	0.9279
55.0	64.10	45.98	29.57	15.43	8.171	4.870	3.037	1.918	1.308	0.9732
57.5	68.31	47.69	30.14	15.46	8.166	4.871	3.033	1.916	1.332	1.005
60.0	71.55	49.12	30.83	15.58	8.175	4.878	3.019	1.917	1.358	1.019
62.5	74.24	50.46	31.66	15.63	8.180	4.876	3.006	1.919	1.403	1.023
65.0	76.70	52.15	32.38	15.67	8.171	4.871	3.010	1.933	1.435	1.023
67.5	79.23	53.77	33.00	15.66	8.148	4.865	3.013	1.947	1.463	1.023
70.0	81.87	55.28	33.53	15.62	8.112	4.853	3.022	1.987	1.466	1.023
72.5	84.28	56.66	33.97	15.51	8.062	4.835	3.024	2.041	1.469	1.023
75.0	86.50	57.74	34.29	15.38	7.994	4.808	3.024	2.087	1.462	1.023
77.5	88.33	58.80	34.52	15.19	7.913	4.776	3.042	2.119	1.453	1.010
80.0	89.80	59.67	34.60	14.95	7.804	4.735	3.047	2.132	1.439	0.9779
82.5	90.74	60.28	34.54	14.65	7.678	4.685	3.062	2.132	1.403	0.9328
85.0	91.20	60.61	34.35	14.30	7.519	4.631	3.083	2.114	1.363	0.8830
87.5	91.24	60.74	33.94	13.86	7.337	4.550	3.083	2.073	1.303	0.8240
90.0	90.74	60.50	33.38	13.34	7.111	4.459	3.047	2.001	1.240	0.7608
92.5	90.57	60.37	32.87	12.91	6.916	4.391	2.992	1.929	1.163	0.6791
95.0	88.09	57.98	31.19	11.92	6.504	4.283	2.897	1.820	1.054	0.5885
97.5	75.97	49.55	26.56	10.33	5.967	4.206	2.761	1.693	0.9272	0.4803
100.0	59.83	38.77	20.98	8.787	5.536	4.034	2.575	1.549	0.7872	0.3713
102.5	43.04	27.68	15.42	7.466	5.269	3.759	2.344	1.359	0.6380	0.2450
105.0	27.10	17.41	10.52	6.420	4.996	3.402	2.068	1.137	0.4522	0.1178
107.5	15.17	10.75	7.683	5.720	4.525	2.988	1.759	0.8792	0.2662	0.0453
110.0	10.19	7.966	6.319	5.206	3.916	2.538	1.416	0.6080	0.0676	0.0317
112.5	7.819	6.453	5.446	4.501	3.260	2.056	1.026	0.3176	0.0317	0.0317
115.0	6.291	5.347	4.654	3.678	2.606	1.554	0.6152	0.0862	0.0317	0.0317
117.5	5.074	4.388	3.781	2.881	1.956	1.010	0.2031	0.0453	0.0317	0.0317
120.0	4.076	3.534	2.909	2.130	1.305	0.4580	0.0362	0.0453	0.0317	0.0317
122.5	3.235	2.668	2.086	1.401	0.6429	0.0776	0.0362	0.0453	0.0317	0.0317
125.0	2.340	1.831	1.308	0.6835	0.0728	0.0634	0.0362	0.0453	0.0317	0.0317
127.5	1.498	1.065	0.5709	0.0998	0.0453	0.0634	0.0362	0.0453	0.0317	0.0317
130.0	0.7375	0.3677	0.0770	0.0543	0.0543	0.0411	0.0364	0.0497	0.0317	0.0317
132.5	0.1675	0.1313	0.1269	0.0725	0.0996	0.0540	0.0996	0.0541	0.0864	0.0317
135.0	0.1757	0.1537	0.1446	0.1129	0.1043	0.1038	0.1295	0.1084	0.1094	0.0993
137.5	0.1081	0.1318	0.0678	0.0999	0.0767	0.1313	0.0860	0.1313	0.0905	0.1149
140.0	0.0136	0.0501	0.0136	0.0498	0.0091	0.0544	0.0181	0.0770	0.0270	0.0772
142.5	0.0091	0.0181	0.0136	0.0181	0.0091	0.0181	0.0136	0.0182	0.0136	0.0181
145.0	0.0091	0.0137	0.0136	0.0136	0.0091	0.0181	0.0136	0.0181	0.0136	0.0136
147.5	0.0091	0.0136	0.0136	0.0136	0.0091	0.0136	0.0136	0.0136	0.0136	0.0136
150.0	0.0091	0.0091	0.0136	0.0136	0.0091	0.0136	0.0136	0.0136	0.0136	0.0136
152.5	0.0091	0.0136	0.0136	0.0136	0.0091	0.0136	0.0136	0.0136	0.0136	0.0091
155.0	0.0091	0.0136	0.0136	0.0136	0.0091	0.0136	0.0136	0.0136	0.0136	0.0091
157.5	0.0091	0.0136	0.0136	0.0136	0.0091	0.0136	0.0136	0.0136	0.0136	0.0091
160.0	0.0092	0.0136	0.0136	0.0091	0.0045	0.0136	0.0136	0.0136	0.0136	0.0136
162.5	0.0136	0.0136	0.0136	0.0091	0.0045	0.0136	0.0136	0.0136	0.0136	0.0136
165.0	0.0136	0.0136	0.0136	0.0091	0.0136	0.0136	0.0136	0.0136	0.0181	0.0136
167.5	0.0091	0.0136	0.0136	0.0091	0.0136	0.0136	0.0181	0.0136	0.0182	0.0181
170.0	0.0136	0.0091	0.0136	0.0091	0.0136	0.0136	0.0181	0.0136	0.0183	0.0181
172.5	0.0136	0.0091	0.0136	0.0091	0.0136	0.0136	0.0181	0.0136	0.0181	0.0181
175.0	0.0136	0.0136	0.0136	0.0136	0.0136	0.0136	0.0181	0.0136	0.0181	0.0181
177.5	0.0136	0.0136	0.0136	0.0136	0.0136	0.0136	0.0181	0.0136	0.0181	0.0181
180.0	0.0136	0.0136	0.0136	0.0136	0.0136	0.0136	0.0181	0.0181	0.0181	0.0181

C Range: 0 - 360DEG
 C Interval: 5.0DEG
 Test Speed: HIGH
 Temperature: 25DEG
 Operators: luominxian
 Test Date: 2017-12-08

γ Range: 0 - 180DEG
 γ Interval: 0.5DEG
 Test System: EVERFINE GO-2000A_V1 SYSTEM V2.0.272
 Humidity: 70%
 Test Distance: 8.425m [K=1.0000]
 Remarks:

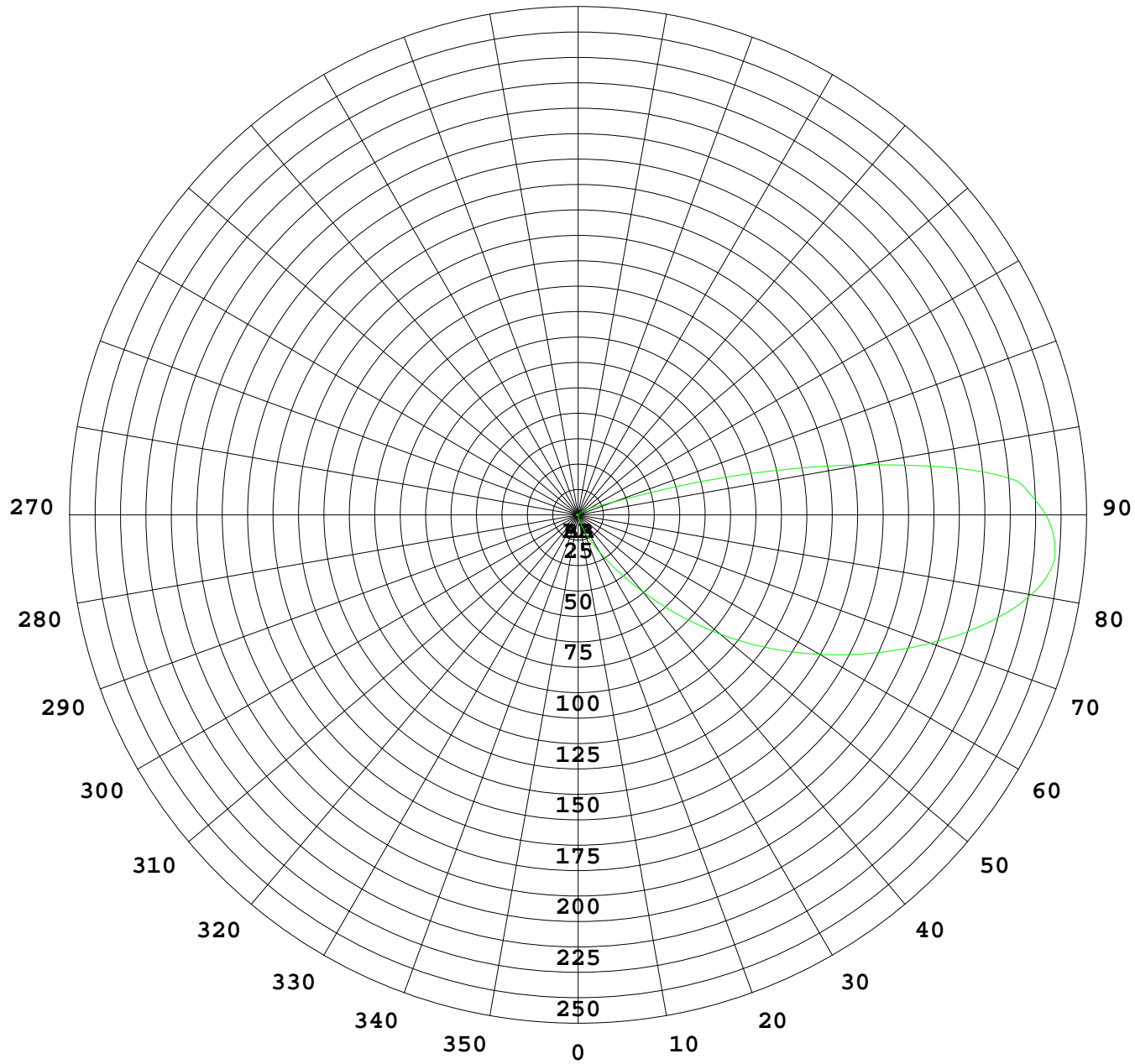
Photometric Data Table [cd]

G/C	350.0	355.0
0.0	0.7924	0.7556
2.5	0.8239	0.7922
5.0	0.8465	0.8021
7.5	0.8637	0.8019
10.0	0.8661	0.8018
12.5	0.8608	0.8017
15.0	0.8511	0.8015
17.5	0.8284	0.7968
20.0	0.8239	0.7713
22.5	0.8013	0.7516
25.0	0.7966	0.7316
27.5	0.7832	0.6974
30.0	0.7514	0.6655
32.5	0.7332	0.6292
35.0	0.7150	0.6021
37.5	0.6971	0.5659
40.0	0.6473	0.5434
42.5	0.6066	0.5329
45.0	0.6614	0.5489
47.5	0.7289	0.5748
50.0	0.7554	0.5838
52.5	0.7543	0.5839
55.0	0.7532	0.5829
57.5	0.7521	0.5819
60.0	0.7550	0.5809
62.5	0.7416	0.5798
65.0	0.7306	0.5660
67.5	0.7165	0.5477
70.0	0.6968	0.5208
72.5	0.6700	0.4981
75.0	0.6428	0.4664
77.5	0.6199	0.4346
80.0	0.5865	0.3939
82.5	0.5341	0.3533
85.0	0.4934	0.3039
87.5	0.4341	0.2626
90.0	0.3666	0.2037
92.5	0.2942	0.1407
95.0	0.2215	0.0817
97.5	0.1400	0.0272
100.0	0.0675	0.0226
102.5	0.0226	0.0226
105.0	0.0227	0.0226
107.5	0.0272	0.0226
110.0	0.0272	0.0226
112.5	0.0272	0.0226
115.0	0.0272	0.0181
117.5	0.0272	0.0181
120.0	0.0317	0.0181
122.5	0.0317	0.0181
125.0	0.0317	0.0181
127.5	0.0317	0.0181
130.0	0.0317	0.0226
132.5	0.0733	0.0226
135.0	0.1315	0.0769
137.5	0.0860	0.0951
140.0	0.0535	0.0682
142.5	0.0136	0.0228
145.0	0.0136	0.0181
147.5	0.0136	0.0181
150.0	0.0136	0.0181
152.5	0.0181	0.0181
155.0	0.0181	0.0181
157.5	0.0181	0.0181
160.0	0.0181	0.0181
162.5	0.0181	0.0181
165.0	0.0181	0.0181
167.5	0.0181	0.0181
170.0	0.0181	0.0181
172.5	0.0181	0.0181
175.0	0.0181	0.0181
177.5	0.0181	0.0181
180.0	0.0181	0.0181

C Range: 0 - 360DEG
 C Interval: 5.0DEG
 Test Speed: HIGH
 Temperature: 25DEG
 Operators: luominxian
 Test Date: 2017-12-08

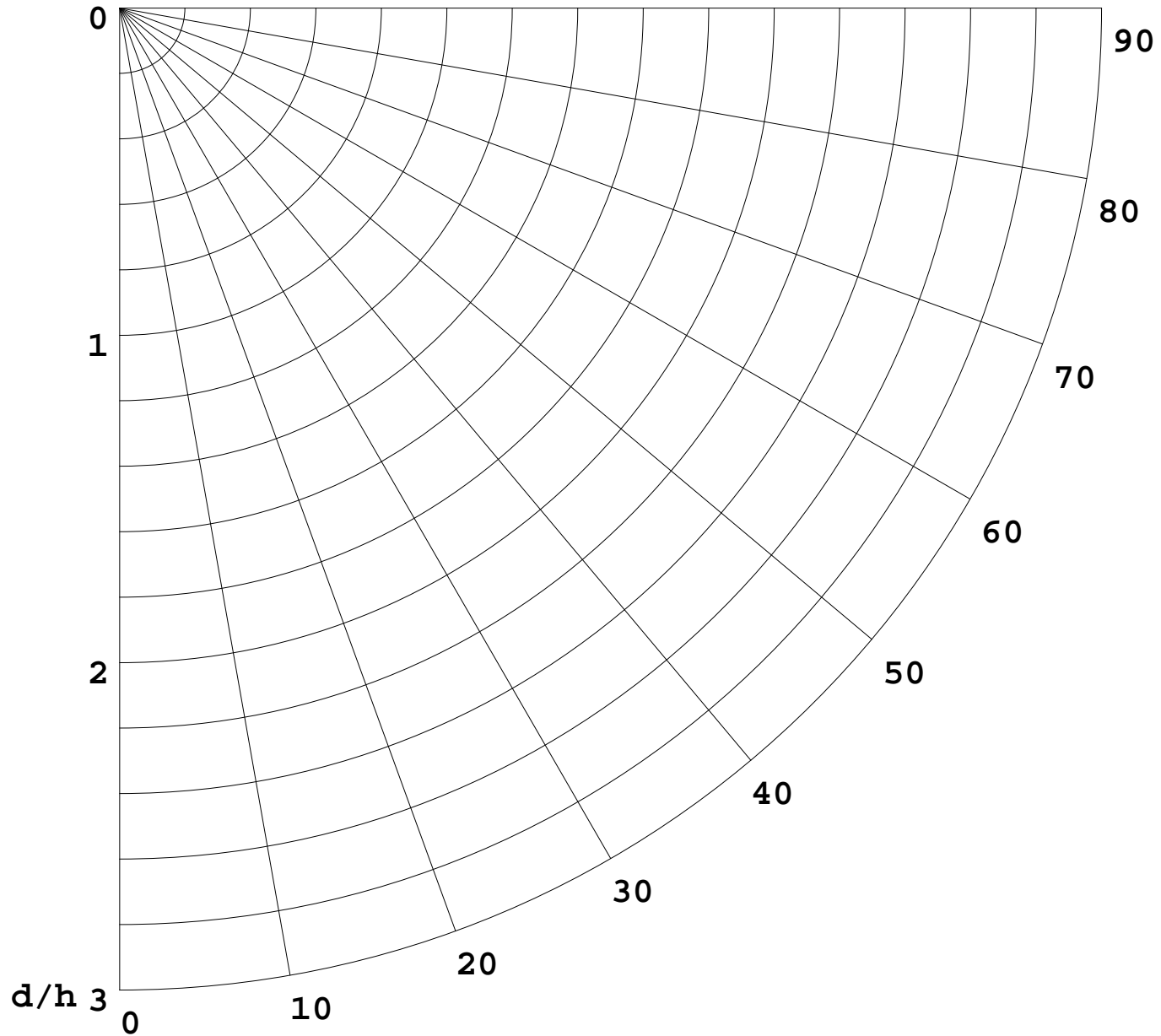
γ Range: 0 - 180DEG
 γ Interval: 0.5DEG
 Test System: EVERFINE GO-2000A_V1 SYSTEM V2.0.272
 Humidity: 70%
 Test Distance: 8.425m [K=1.0000]
 Remarks:

I (cd)



1000 lm

$K = 1$



F = 5000 lm
K = 0.7
Hcc = 0.0 m
Hfc = 0.0 m
Eave = 100 lx

	Pcc	Pw	Pfc
—————	70	50	30
—————	50	30	20

