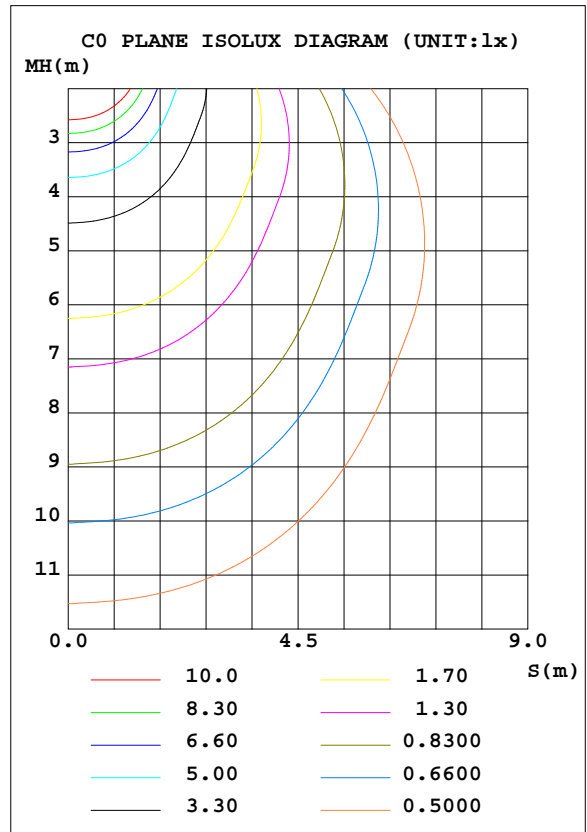
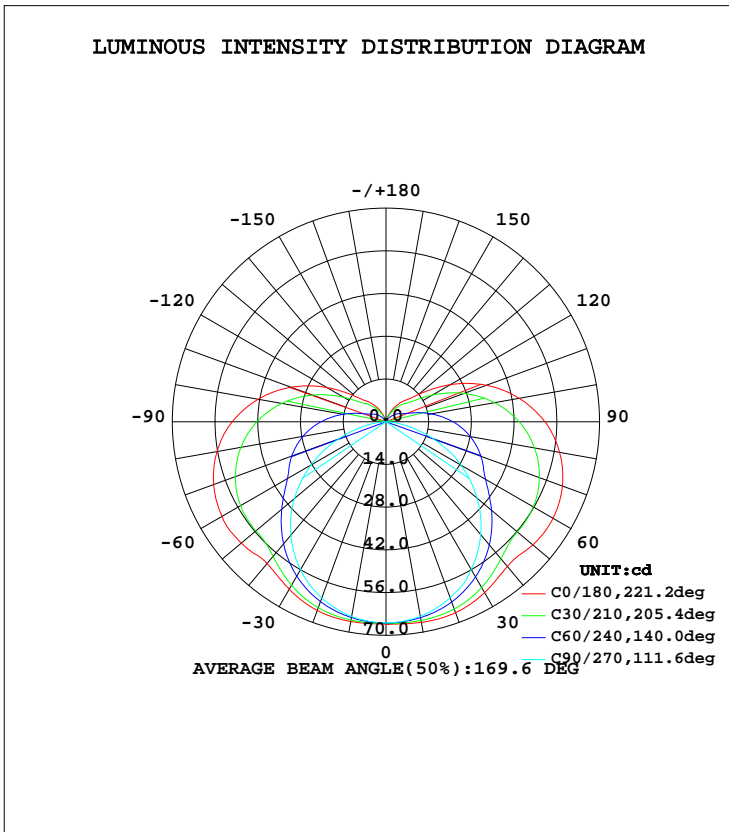


LUMINAIRE PHOTOMETRIC TEST REPORT

Test:U:120.8V I:0.1342A P:16.04W PF:0.9895 Lamp Flux:376.197x1 lm		
NAME: NVS5131200L30D1SN	TYPE:	WEIGHT:
DIM.:	SPEC.:	SERIAL No.:2019-05-22-01
MFR.: AFX	SUR.:0.3MX0.1M	PROTECTION ANGLE:

DATA OF LAMP		PHOTOMETRIC DATA Eff: 23.46 lm/W			
MODEL	NVS5131200L30D1SN	I _{max} (cd)	66.88	S/MH(C0/180)	1.46
NOMINAL POWER(W)	16	LOR(%)	100.0	S/MH(C90/270)	1.26
RATED VOLTAGE(V)	120	TOTAL FLUX(lm)	376.20	η UP, DN(C0-180)	10.8, 39.3
NOMINAL FLUX(lm)	376.197	CIE CLASS	SEMI-D.	η UP, DN(C180-360)	10.7, 39.3
LAMPS INSIDE	1	η up(%)	21.5	CIBSE SHR NOM	1.50
TEST VOLTAGE(V)	120.8	η down(%)	78.5	CIBSE SHR MAX	1.55



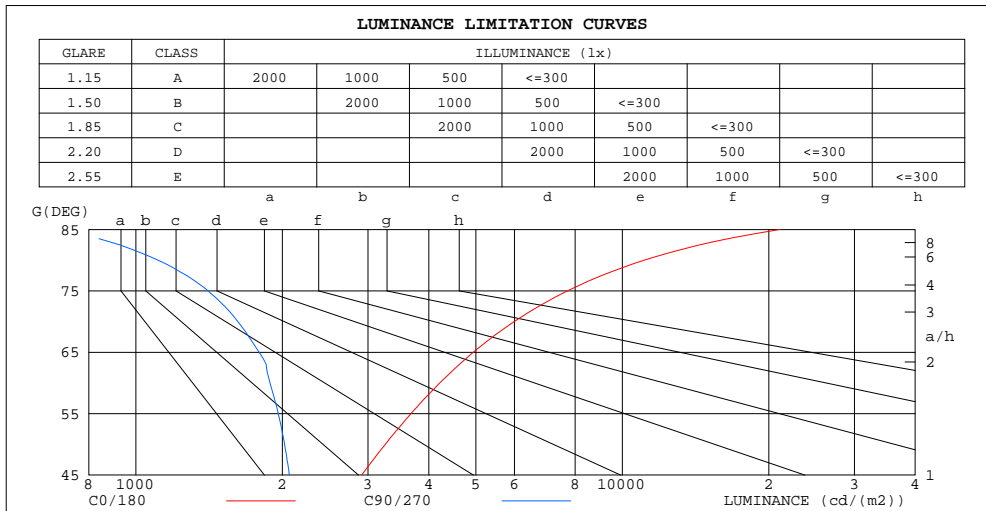
C Range: 0 - 360DEG
 C Interval: 5.0DEG
 Test Speed: HIGH
 Temperature:25DEG
 Operators:yechihong
 Test Date:2019-05-22

γ Range: 0 - 180DEG
 γ Interval: 0.5DEG
 Test System:EVERFINE GO-2000A_V1 SYSTEM V2.0.272
 Humidity:70%
 Test Distance:8.425m [K=1.0000]
 Remarks:

ZONAL FLUX DIAGRAM
AND LUMINANCE LIMITATION CURVES

ZONAL FLUX DIAGRAM:

γ	C0	C45	C90	C135	C180	C225	C270	C315	γ	Φ zone	Φ total	lum, lamp
5	66.49	65.89	65.61	65.81	66.36	65.89	65.63	65.82	0- 5	1.576	1.576	0.42,0.42
10	66.76	65.65	64.75	65.50	66.45	65.57	64.78	65.57	5- 10	4.702	6.279	1.67,1.67
15	66.88	65.11	63.33	64.85	66.34	64.92	63.39	65.04	10- 15	7.741	14.02	3.73,3.73
20	66.61	64.15	61.40	63.81	65.82	63.85	61.47	64.12	15- 20	10.61	24.63	6.55,6.55
25	65.84	62.79	59.13	62.32	64.80	62.29	59.08	62.75	20- 25	13.23	37.86	10.1,10.1
30	64.62	60.87	55.89	60.29	63.39	60.26	55.98	60.89	25- 30	15.51	53.37	14.2,14.2
35	63.16	58.50	52.30	57.83	61.81	57.75	52.50	58.57	30- 35	17.38	70.75	18.8,18.8
40	61.92	55.79	48.30	55.02	60.65	54.91	48.51	55.85	35- 40	18.83	89.59	23.8,23.8
45	61.80	52.86	43.88	52.11	61.11	51.96	44.17	52.99	40- 45	19.93	109.5	29.1,29.1
50	62.78	50.20	38.99	49.69	61.88	49.44	39.18	50.43	45- 50	20.84	130.4	34.7,34.7
55	63.27	48.42	33.76	48.49	62.39	48.05	33.92	48.89	50- 55	21.53	151.9	40.4,40.4
60	63.21	47.51	28.31	47.54	62.02	47.05	28.34	48.05	55- 60	21.92	173.8	46.2,46.2
65	62.62	46.24	22.73	46.20	61.31	45.68	22.55	46.79	60- 65	22.00	195.8	52.52
70	61.51	44.58	16.62	44.46	60.09	43.89	16.68	45.13	65- 70	21.72	217.5	57.8,57.8
75	59.88	42.53	10.93	42.33	58.39	41.73	10.99	43.08	70- 75	21.11	238.6	63.4,63.4
80	57.76	40.12	5.785	39.83	56.21	39.20	5.877	40.68	75- 80	20.19	258.8	68.8,68.8
85	55.17	37.33	1.863	37.00	53.57	36.32	1.902	37.92	80- 85	18.99	277.8	73.8,73.8
90	52.10	34.20	0.2630	33.79	50.35	33.08	0.1855	34.85	85- 90	17.52	295.3	78.5,78.5
95	48.40	30.67	0.2354	30.23	46.66	29.46	0.1765	31.37	90- 95	15.83	311.2	82.7,82.7
100	44.36	26.88	0.2218	26.37	42.55	25.57	0.1765	27.56	95-100	13.97	325.1	86.4,86.4
105	39.89	22.79	0.2128	22.22	38.03	21.43	0.1856	23.47	100-105	11.99	337.1	89.6,89.6
110	35.01	18.55	0.2173	17.94	33.12	17.19	0.2037	19.20	105-110	9.979	347.1	92.3,92.3
115	29.80	14.38	0.2263	13.78	27.91	13.12	0.2264	14.94	110-115	8.013	355.1	94.4,94.4
120	24.35	10.68	0.2534	10.22	22.51	9.747	0.2535	10.72	115-120	6.175	361.3	96.96
125	18.88	8.253	0.2852	8.012	17.24	7.765	0.2761	7.792	120-125	4.570	365.9	97.3,97.3
130	13.93	7.082	0.3576	6.918	12.72	6.723	0.2942	6.562	125-130	3.292	369.2	98.1,98.1
135	10.58	5.977	0.3757	5.771	9.917	5.575	0.3033	5.494	130-135	2.392	371.6	98.8,98.8
140	8.842	4.742	0.4442	4.536	8.287	4.286	0.3078	4.415	135-140	1.771	373.3	99.2,99.2
145	7.099	3.259	0.3849	3.247	6.591	3.013	0.3124	3.047	140-145	1.251	374.6	99.6,99.6
150	5.326	1.949	0.3714	1.945	4.822	1.728	0.3169	1.776	145-150	0.8058	375.4	99.8,99.8
155	3.497	0.8900	0.3758	0.7574	3.013	0.5906	0.3396	0.8353	150-155	0.4528	375.8	99.9,99.9
160	1.679	0.3532	0.3668	0.3667	1.263	0.3440	0.3577	0.3532	155-160	0.2055	376.0	100,100
165	0.3896	0.3577	0.3621	0.3621	0.3667	0.3485	0.3664	0.3619	160-165	0.0749	376.1	100,100
170	0.3803	0.3576	0.3577	0.3621	0.3756	0.3486	0.3667	0.3623	165-170	0.0429	376.2	100,100
175	0.3757	0.3621	0.3621	0.3621	0.3757	0.3621	0.3756	0.3667	170-175	0.0261	376.2	100,100
180	0.3757	0.3712	0.3712	0.3667	0.3803	0.3667	0.3712	0.3667	175-180	0.0088	376.2	100,100
DEG	LUMINOUS INTENSITY:cd MAX (Ii - Iavg)/Iavg (0-135) = 99.6 %									UNIT:lm		



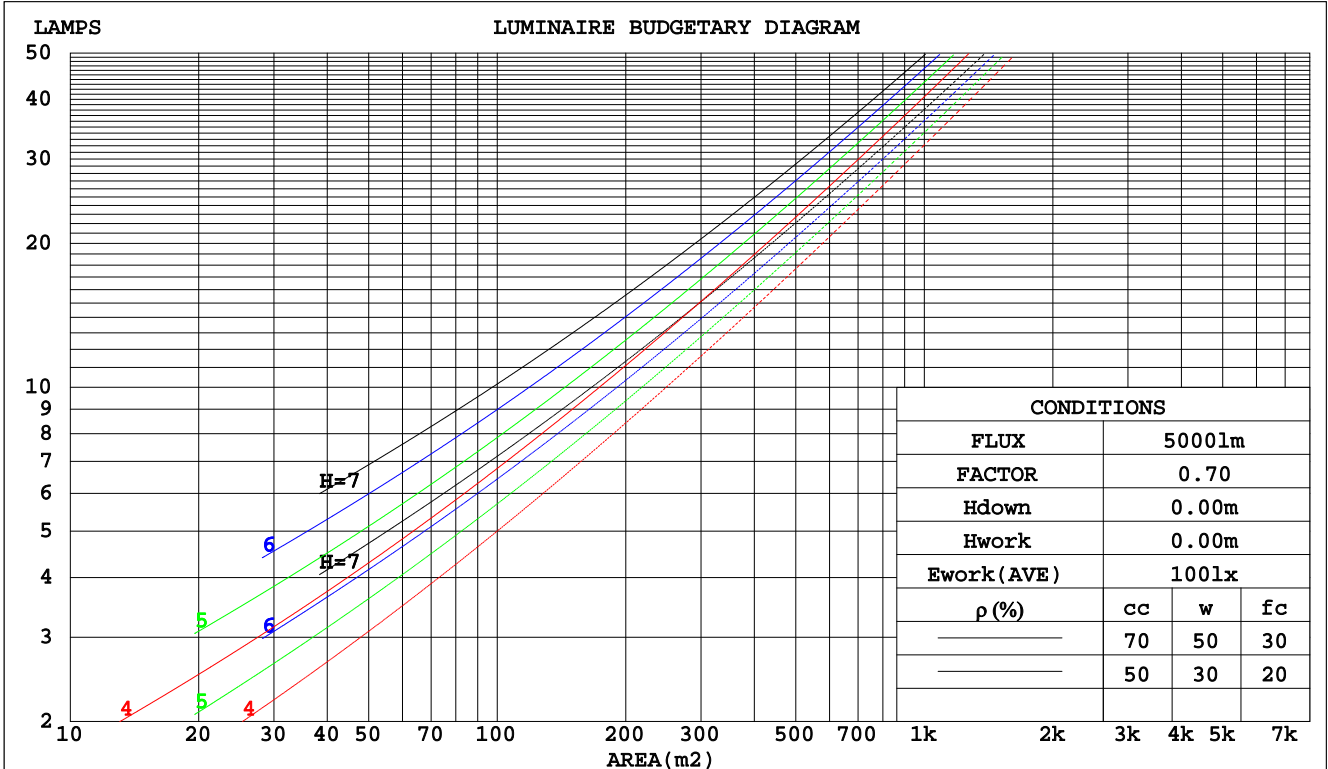
C Range: 0 - 360DEG
C Interval: 5.0DEG
Test Speed: HIGH
Temperature:25DEG
Operators:yechihong
Test Date:2019-05-22

γ Range: 0 - 180DEG
γ Interval: 0.5DEG
Test System:EVERFINE GO-2000A_V1 SYSTEM V2.0.272
Humidity:70%
Test Distance:8.425m [K=1.0000]
Remarks:

CU AND LUMINAIRE BUDGETARY ESTIMATE DIAGRAM

Test:U:120.8V I:0.1342A P:16.04W PF:0.9895 Lamp Flux:376.197x1 lm		
NAME: NVS5131200L30D1SN	TYPE:	WEIGHT:
DIM.:	SPEC.:	SERIAL No.:2019-05-22-01
MFR.: AFX	SUR.:0.3MX0.1M	PROTECTION ANGLE:

pcc	80%			70%			50%			30%			10%			0
pw	50%	30%	10%	50%	30%	10%	50%	30%	10%	50%	30%	10%	50%	30%	10%	0
pfc	20%			20%			20%			20%			20%			0
RCR	RCR:Room Cavity Ratio						Coefficients of Utilization(CU)									
0.0	1.14	1.14	1.14	1.09	1.09	1.09	.99	.99	.99	.90	.90	.90	.82	.82	.82	.79
1.0	.93	.87	.82	.89	.83	.79	.80	.76	.72	.73	.69	.66	.66	.63	.60	.57
2.0	.79	.71	.64	.75	.68	.61	.68	.62	.56	.61	.56	.52	.55	.51	.48	.44
3.0	.68	.59	.51	.65	.56	.49	.59	.51	.46	.53	.47	.42	.48	.43	.39	.35
4.0	.59	.50	.42	.57	.48	.41	.51	.44	.38	.46	.40	.35	.42	.37	.32	.29
5.0	.53	.43	.36	.50	.41	.34	.46	.38	.32	.41	.35	.30	.37	.32	.27	.25
6.0	.47	.37	.31	.45	.36	.30	.41	.33	.28	.37	.31	.26	.34	.28	.24	.21
7.0	.42	.33	.27	.40	.32	.26	.37	.30	.24	.34	.27	.22	.31	.25	.21	.18
8.0	.38	.30	.23	.37	.28	.23	.34	.26	.21	.31	.24	.20	.28	.23	.18	.16
9.0	.35	.27	.21	.34	.26	.20	.31	.24	.19	.28	.22	.18	.26	.20	.17	.14
10.0	.32	.24	.19	.31	.23	.18	.28	.22	.17	.26	.20	.16	.24	.19	.15	.13



C Range: 0 - 360DEG
 C Interval: 5.0DEG
 Test Speed: HIGH
 Temperature:25DEG
 Operators:yechihong
 Test Date:2019-05-22

γ Range: 0 - 180DEG
 γ Interval: 0.5DEG
 Test System:EVERFINE GO-2000A_V1 SYSTEM V2.0.272
 Humidity:70%
 Test Distance:8.425m [K=1.0000]
 Remarks:

WEC AND CCEC

Test:U:120.8V I:0.1342A P:16.04W PF:0.9895 Lamp Flux:376.197x1 lm		
NAME: NVS5131200L30D1SN	TYPE:	WEIGHT:
DIM.:	SPEC.:	SERIAL No.:2019-05-22-01
MFR.: AFX	SUR.:0.3MX0.1M	PROTECTION ANGLE:

ρcc	80%			70%			50%			30%			10%			0
ρw	50%	30%	10%	50%	30%	10%	50%	30%	10%	50%	30%	10%	50%	30%	10%	0
ρfc	20%			20%			20%			20%			20%			0
RCR	RCR:Room Cavity Ratio						Wall Exitance Coefficients(WEC)									
0.0																
1.0	.418	.238	.075	.404	.231	.073	.378	.217	.069	.354	.204	.066	.332	.193	.062	
2.0	.353	.193	.059	.340	.188	.058	.317	.176	.055	.295	.166	.052	.275	.156	.049	
3.0	.309	.165	.049	.298	.160	.048	.277	.150	.046	.257	.141	.043	.238	.132	.041	
4.0	.276	.143	.042	.266	.139	.041	.246	.131	.039	.228	.123	.037	.211	.115	.035	
5.0	.249	.127	.037	.240	.123	.036	.222	.116	.034	.206	.109	.032	.190	.102	.031	
6.0	.227	.114	.033	.219	.110	.032	.202	.104	.030	.187	.097	.029	.173	.091	.027	
7.0	.209	.103	.029	.201	.100	.029	.186	.094	.027	.172	.088	.026	.159	.083	.024	
8.0	.193	.094	.027	.186	.091	.026	.172	.086	.025	.159	.081	.023	.148	.076	.022	
9.0	.179	.087	.024	.173	.084	.024	.160	.079	.022	.149	.074	.021	.137	.070	.020	
10.0	.168	.080	.022	.161	.078	.022	.150	.073	.021	.139	.069	.020	.129	.065	.019	

ρcc	80%			70%			50%			30%			10%			0
ρw	50%	30%	10%	50%	30%	10%	50%	30%	10%	50%	30%	10%	50%	30%	10%	0
ρfc	20%			20%			20%			20%			20%			0
RCR	RCR:Room Cavity Ratio						Ceiling Cavity Exitance Coefficients(CCEC)									
0.0	.354	.354	.354	.303	.303	.303	.207	.207	.207	.119	.119	.119	.038	.038	.038	
1.0	.353	.320	.291	.302	.275	.250	.207	.189	.173	.119	.109	.101	.038	.035	.033	
2.0	.347	.298	.257	.297	.256	.222	.203	.177	.155	.117	.103	.091	.038	.033	.030	
3.0	.339	.282	.236	.291	.243	.204	.200	.169	.143	.115	.099	.085	.037	.032	.028	
4.0	.331	.269	.222	.284	.233	.193	.195	.162	.136	.113	.095	.080	.036	.031	.026	
5.0	.323	.260	.213	.278	.225	.185	.191	.157	.131	.111	.092	.078	.036	.030	.026	
6.0	.316	.252	.206	.271	.218	.180	.187	.153	.127	.109	.090	.075	.035	.029	.025	
7.0	.308	.245	.201	.265	.213	.175	.183	.149	.124	.107	.088	.074	.034	.029	.024	
8.0	.302	.240	.197	.260	.208	.172	.180	.146	.122	.105	.086	.073	.034	.028	.024	
9.0	.295	.235	.195	.254	.204	.170	.176	.143	.120	.103	.085	.072	.033	.028	.024	
10.0	.289	.231	.192	.249	.201	.168	.173	.141	.119	.101	.083	.071	.033	.027	.024	

C Range: 0 - 360DEG
 C Interval: 5.0DEG
 Test Speed: HIGH
 Temperature:25DEG
 Operators:yechihong
 Test Date:2019-05-22

γ Range: 0 - 180DEG
 γ Interval: 0.5DEG
 Test System:EVERFINE GO-2000A_V1 SYSTEM V2.0.272
 Humidity:70%
 Test Distance:8.425m [K=1.0000]
 Remarks:

Uncorrected UGR Table

Test:U:120.8V I:0.1342A P:16.04W PF:0.9895 Lamp Flux:376.197x1 lm										
NAME: NVS5131200L30D1SN					TYPE:			WEIGHT:		
DIM.:					SPEC.:			SERIAL No.:2019-05-22-01		
MFR.: AFX					SUR.:0.3MX0.1M			PROTECTION ANGLE:		
ceiling/cavity	0.7	0.7	0.5	0.5	0.3	0.7	0.7	0.5	0.5	0.3
walls	0.5	0.3	0.5	0.3	0.3	0.5	0.3	0.5	0.3	0.3
working plane	0.2	0.2	0.2	0.2	0.2	0.2	0.2	0.2	0.2	0.2
Room dimensions	Viewed crosswise					Viewed endwise				
x = 2H y = 2H	16.8	18.1	17.3	18.7	19.3	13.2	14.6	13.8	15.2	15.8
3H	20.0	21.3	20.6	21.9	22.5	14.6	15.9	15.2	16.5	17.2
4H	21.8	23.0	22.4	23.6	24.3	15.2	16.4	15.8	17.0	17.7
6H	23.7	24.9	24.4	25.5	26.2	15.5	16.6	16.1	17.2	18.0
8H	24.8	25.9	25.4	26.6	27.3	15.5	16.6	16.2	17.3	18.0
12H	26.0	27.1	26.7	27.7	28.5	15.5	16.6	16.2	17.2	18.0
4H 2H	17.3	18.5	17.9	19.1	19.8	14.9	16.1	15.5	16.7	17.5
3H	20.8	21.9	21.5	22.5	23.3	16.7	17.8	17.4	18.5	19.2
4H	22.8	23.8	23.5	24.5	25.3	17.5	18.5	18.2	19.2	20.0
6H	25.0	25.9	25.7	26.6	27.4	18.1	19.0	18.8	19.7	20.5
8H	26.2	27.0	26.9	27.7	28.6	18.3	19.1	19.0	19.8	20.7
12H	27.5	28.3	28.3	29.0	29.9	18.4	19.2	19.1	19.9	20.7
8H 4H	23.2	24.0	23.9	24.7	25.5	19.3	20.2	20.0	20.9	21.7
6H	25.7	26.4	26.4	27.1	28.0	20.5	21.2	21.2	21.9	22.8
8H	27.1	27.7	27.8	28.5	29.4	21.0	21.6	21.7	22.4	23.2
12H	28.7	29.3	29.5	30.1	31.0	21.3	21.9	22.1	22.6	23.5
12H 4H	23.2	24.0	23.9	24.7	25.5	19.9	20.7	20.6	21.4	22.3
6H	25.8	26.4	26.6	27.2	28.1	21.4	22.0	22.2	22.8	23.7
8H	27.3	27.9	28.1	28.7	29.6	22.1	22.7	22.9	23.5	24.4
Variations with the observer position at spacings:										
S = 1.0H	+ 0.1 / - 0.1					+ 0.1 / - 0.1				
1.5H	+ 0.2 / - 0.3					+ 0.1 / - 0.1				
2.0H	+ 0.3 / - 0.4					+ 0.2 / - 0.3				

CIE Pub.117 Corrected 376.2 lm Total Lamp Luminous Flux. (8log(F/F0) = -3.4)

C Range: 0 - 360DEG
 C Interval: 5.0DEG
 Test Speed: HIGH
 Temperature:25DEG
 Operators:yechihong
 Test Date:2019-05-22

γ Range: 0 - 180DEG
 γ Interval: 0.5DEG
 Test System:EVERFINE GO-2000A_V1 SYSTEM V2.0.272
 Humidity:70%
 Test Distance:8.425m [K=1.0000]
 Remarks:

UTILIZATION FACTORS TABLE

Test:U:120.8V I:0.1342A P:16.04W PF:0.9895 Lamp Flux:376.197x1 lm		
NAME: NVS5131200L30D1SN	TYPE:	WEIGHT:
DIM.:	SPEC.:	SERIAL No.:2019-05-22-01
MFR.: AFX	SUR.:0.3MX0.1M	PROTECTION ANGLE:

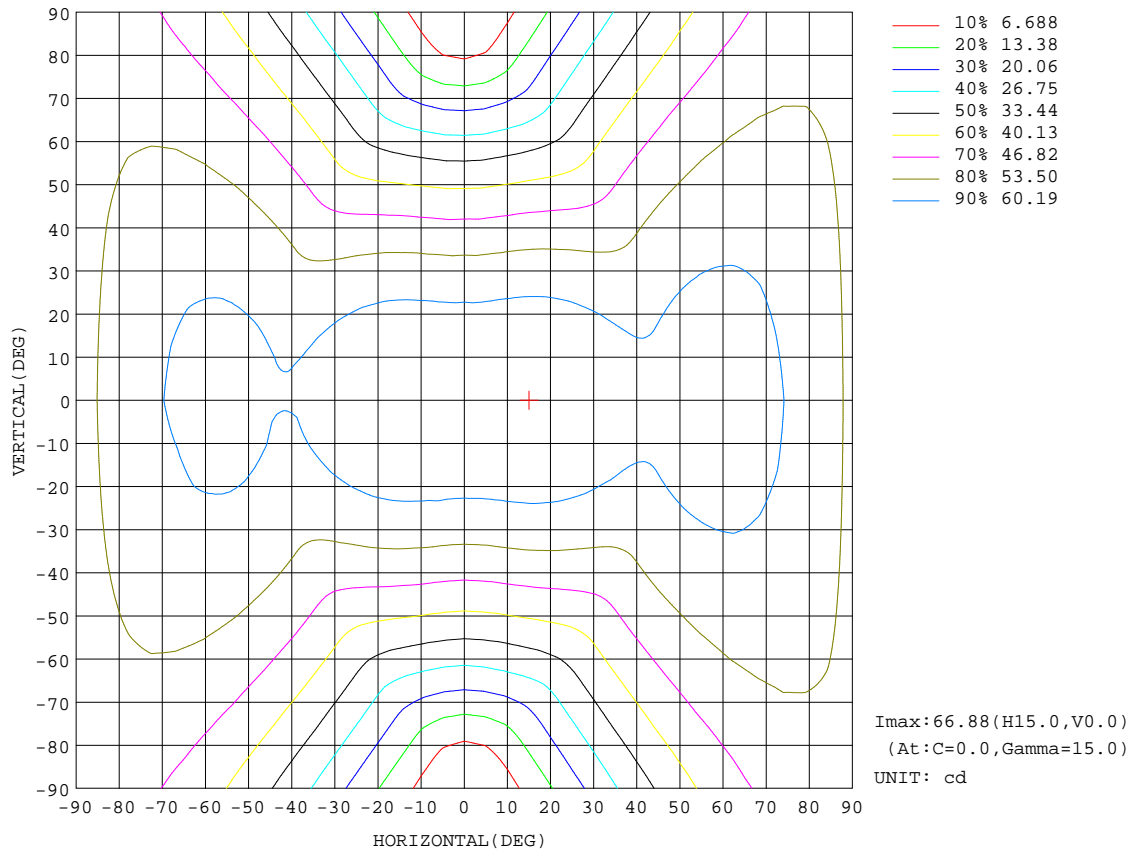
REFLECTANCE										
Ceiling	0.8	0.8	0.8	0.7	0.7	0.7	0.5	0.5	0.5	0
Walls	0.7	0.5	0.3	0.7	0.5	0.3	0.7	0.5	0.3	0
Working plane	0.2	0.2	0.2	0.2	0.2	0.2	0.2	0.2	0.2	0
ROOM INDEX	UTILIZATION FACTORS(PERCENT) $k(RI) \times RCR = 5$									
k = 0.60	45	32	25	44	32	24	42	31	24	17
0.80	54	40	32	52	39	31	49	38	31	22
1.00	61	47	39	59	46	38	55	47	37	28
1.25	68	54	45	65	53	44	61	50	43	33
1.50	73	60	51	70	58	50	65	55	48	37
2.00	81	68	59	77	66	58	71	62	55	43
2.50	85	74	65	82	71	64	75	67	60	46
3.00	89	79	71	85	76	69	78	71	64	50
4.00	94	85	78	90	82	75	82	76	70	55
5.00	97	90	83	93	86	80	85	79	74	58
ROOM INDEX	UF(total)									Direct
According to DIN EN 13032-2 2004			Suspended				SHRNOM = 1.25			

C Range: 0 - 360DEG
 C Interval: 5.0DEG
 Test Speed: HIGH
 Temperature:25DEG
 Operators:yechihong
 Test Date:2019-05-22

γ Range: 0 - 180DEG
 γ Interval: 0.5DEG
 Test System:EVERFINE GO-2000A_V1 SYSTEM V2.0.272
 Humidity:70%
 Test Distance:8.425m [K=1.0000]
 Remarks:

ISOCANDELA DIAGRAM

Test:U:120.8V I:0.1342A P:16.04W PF:0.9895 Lamp Flux:376.197x1 lm		
NAME: NVS5131200L30D1SN	TYPE:	WEIGHT:
DIM.:	SPEC.:	SERIAL No.:2019-05-22-01
MFR.: AFX	SUR.:0.3MX0.1M	PROTECTION ANGLE:

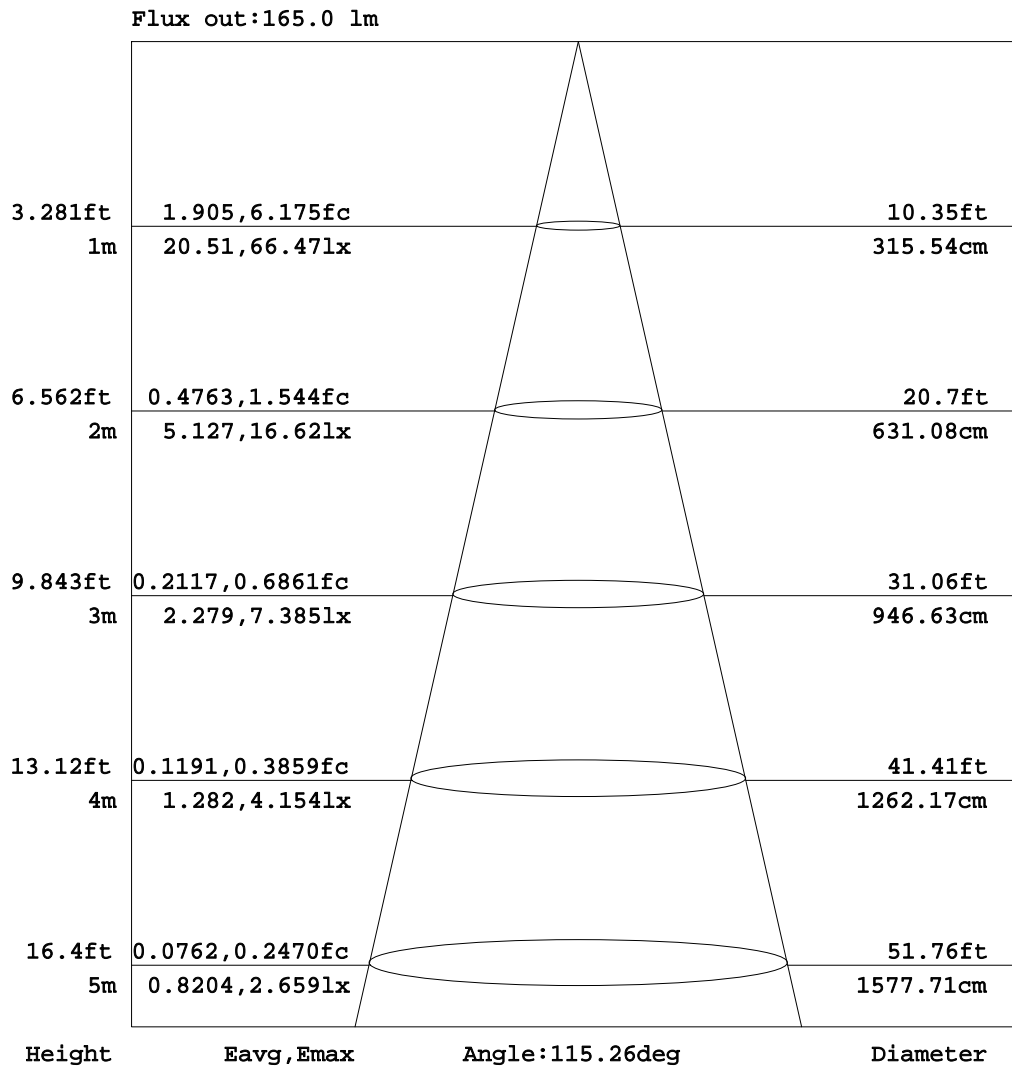


C Range: 0 - 360DEG
 C Interval: 5.0DEG
 Test Speed: HIGH
 Temperature:25DEG
 Operators:yechihong
 Test Date:2019-05-22

γ Range: 0 - 180DEG
 γ Interval: 0.5DEG
 Test System:EVERFINE GO-2000A_V1 SYSTEM V2.0.272
 Humidity:70%
 Test Distance:8.425m [K=1.0000]
 Remarks:

AAI Figure

Test:U:120.8V I:0.1342A P:16.04W PF:0.9895 Lamp Flux:376.197x1 lm		
NAME: NVS5131200L30D1SN	TYPE:	WEIGHT:
DIM.:	SPEC.:	SERIAL No.:2019-05-22-01
MFR.: AFX	SUR.:0.3MX0.1M	PROTECTION ANGLE:



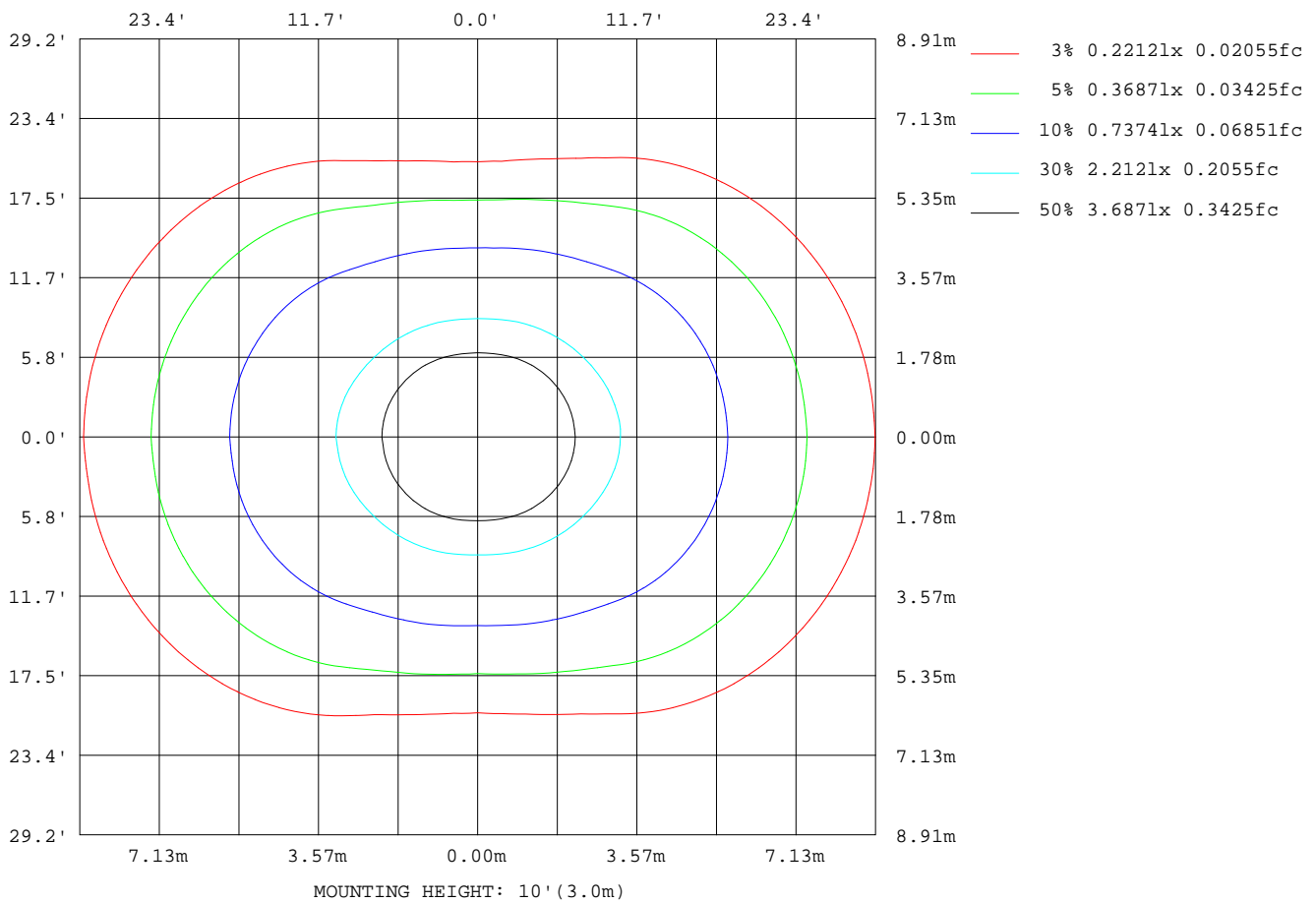
Note:The Curves indicate the illuminated area and the average illumination when the luminaire is at different distance.

C Range: 0 - 360DEG
 C Interval: 5.0DEG
 Test Speed: HIGH
 Temperature:25DEG
 Operators:yechihong
 Test Date:2019-05-22

γ Range: 0 - 180DEG
 γ Interval: 0.5DEG
 Test System:EVERFINE GO-2000A_V1 SYSTEM V2.0.272
 Humidity:70%
 Test Distance:8.425m [K=1.0000]
 Remarks:

ISOLUX DIAGRAM

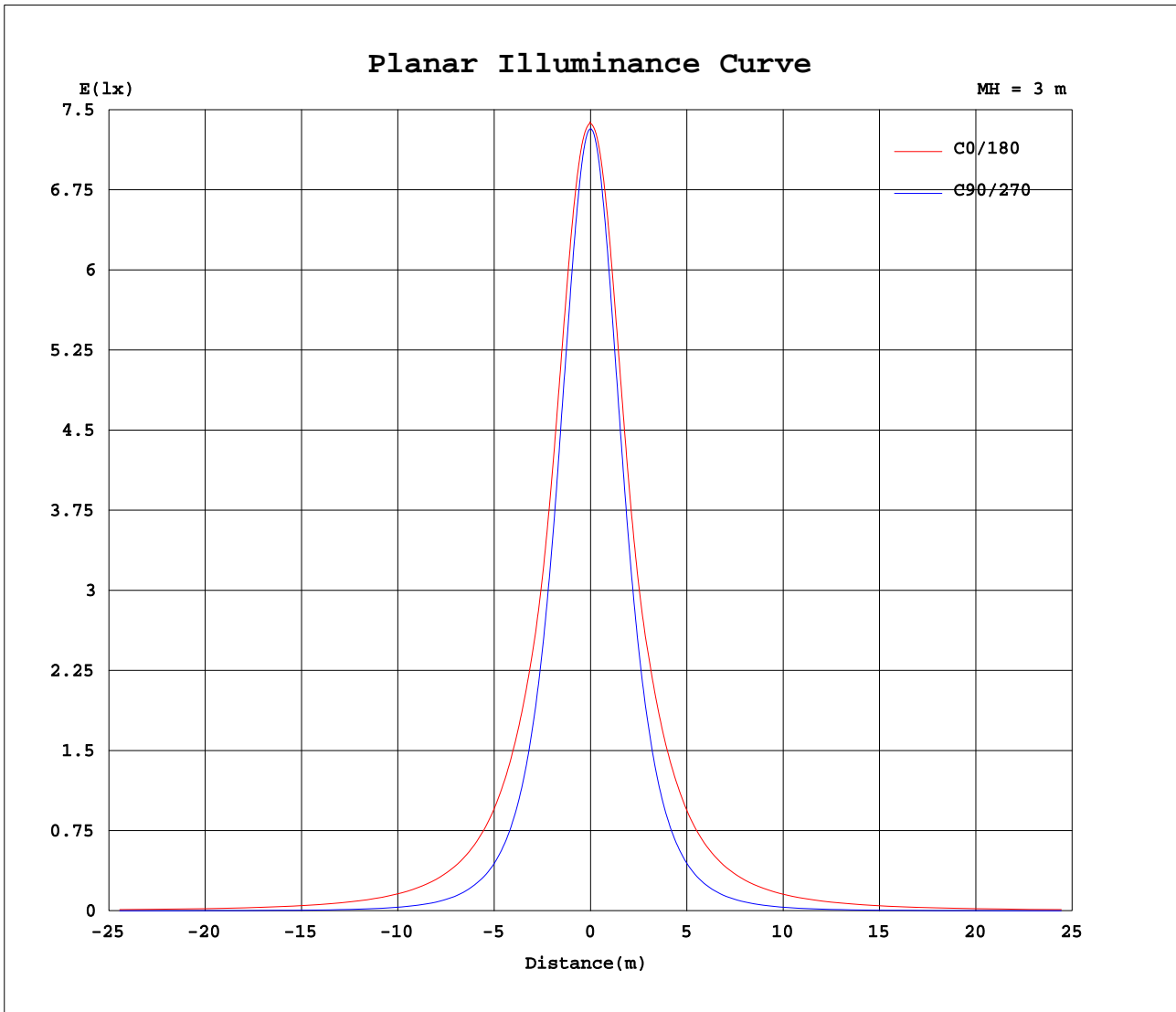
Test:U:120.8V I:0.1342A P:16.04W PF:0.9895 Lamp Flux:376.197x1 lm		
NAME: NVS5131200L30D1SN	TYPE:	WEIGHT:
DIM.:	SPEC.:	SERIAL No.:2019-05-22-01
MFR.: AFX	SUR.:0.3MX0.1M	PROTECTION ANGLE:



C Range: 0 - 360DEG
 C Interval: 5.0DEG
 Test Speed: HIGH
 Temperature:25DEG
 Operators:yechihong
 Test Date:2019-05-22

γ Range: 0 - 180DEG
 γ Interval: 0.5DEG
 Test System:EVERFINE GO-2000A_V1 SYSTEM V2.0.272
 Humidity:70%
 Test Distance:8.425m [K=1.0000]
 Remarks:

Planar Illuminance Curve



C Range: 0 - 360DEG
 C Interval: 5.0DEG
 Test Speed: HIGH
 Temperature: 25DEG
 Operators: yechihong
 Test Date: 2019-05-22

γ Range: 0 - 180DEG
 γ Interval: 0.5DEG
 Test System: EVERFINE GO-2000A_V1 SYSTEM V2.0.272
 Humidity: 70%
 Test Distance: 8.425m [K=1.0000]
 Remarks:

LUMINOUS DISTRIBUTION INTENSITY DATA

Test:U:120.8V I:0.1342A P:16.04W PF:0.9895 Lamp Flux:376.197x1 lm		
NAME: NVS5131200L30D1SN	TYPE:	WEIGHT:
DIM.:	SPEC.:	SERIAL No.:2019-05-22-01
MFR.: AFX	SUR.:0.3MX0.1M	PROTECTION ANGLE:

Table--1

UNIT: cd

C(DEG) γ (DEG)	0	5	10	15	20	25	30	35	40	45	50	55	60	65	70	75	80	85	90
0	66.4	66.3	66.3	66.2	66.2	66.1	66.1	66.1	66.1	66.0	66.0	66.0	66.0	65.9	65.9	65.9	65.9	65.9	65.9
5	66.5	66.4	66.4	66.3	66.2	66.2	66.1	66.1	66.0	65.9	65.9	65.8	65.8	65.7	65.7	65.7	65.6	65.6	65.6
10	66.8	66.7	66.6	66.5	66.4	66.3	66.1	66.0	65.8	65.6	65.5	65.4	65.2	65.1	65.0	64.9	64.8	64.8	64.7
15	66.9	66.8	66.7	66.5	66.3	66.1	65.9	65.7	65.4	65.1	64.8	64.5	64.2	64.0	63.8	63.6	63.4	63.4	63.3
20	66.6	66.5	66.3	66.2	65.9	65.6	65.3	65.0	64.6	64.2	63.7	63.3	62.9	62.5	62.1	61.8	61.6	61.5	61.4
25	65.8	65.7	65.5	65.3	65.0	64.7	64.3	63.8	63.3	62.8	62.2	61.6	61.0	60.5	59.9	59.6	59.3	59.2	59.1
30	64.6	64.5	64.3	64.0	63.6	63.2	62.7	62.2	61.5	60.9	60.1	59.5	58.7	58.0	57.3	56.7	56.3	56.0	55.9
35	63.2	63.0	62.8	62.4	61.9	61.4	60.7	60.1	59.3	58.5	57.6	56.8	55.9	55.1	54.2	53.5	52.8	52.5	52.3
40	61.9	61.8	61.4	60.9	60.2	59.5	58.6	57.8	56.7	55.8	54.7	53.8	52.7	51.7	50.7	49.8	49.0	48.5	48.3
45	61.8	61.6	61.0	60.2	59.2	58.1	56.8	55.5	54.1	52.9	51.5	50.3	49.0	47.9	46.7	45.7	44.7	44.1	43.9
50	62.8	62.5	61.9	60.9	59.6	58.1	56.2	54.1	52.1	50.2	48.3	46.7	45.1	43.7	42.4	41.2	40.0	39.3	39.0
55	63.3	63.0	62.3	61.3	59.9	58.2	56.2	53.9	51.3	48.4	45.7	43.3	41.2	39.4	37.7	36.3	34.9	34.1	33.8
60	63.2	62.9	62.2	61.1	59.7	57.9	55.7	53.3	50.5	47.5	44.2	40.8	37.7	35.2	33.0	31.3	29.7	28.7	28.3
65	62.6	62.3	61.6	60.5	59.0	57.1	54.8	52.3	49.4	46.2	42.8	39.1	35.2	31.6	28.6	26.4	24.5	23.3	22.7
70	61.5	61.2	60.4	59.3	57.7	55.8	53.5	50.9	47.8	44.6	41.0	37.2	33.1	28.9	24.7	21.4	18.8	17.2	16.6
75	59.9	59.6	58.8	57.7	56.0	54.1	51.7	49.0	45.9	42.5	38.8	34.9	30.7	26.4	21.9	17.4	13.8	11.7	10.9
80	57.8	57.5	56.7	55.5	53.9	51.9	49.4	46.7	43.5	40.1	36.3	32.4	28.1	23.7	19.1	14.4	9.90	6.84	5.78
85	55.2	54.9	54.1	52.9	51.2	49.2	46.7	44.0	40.8	37.3	33.5	29.5	25.1	20.7	16.1	11.5	7.03	3.32	1.86
90	52.1	51.9	51.0	49.8	48.1	46.1	43.6	40.9	37.7	34.2	30.4	26.3	22.0	17.5	13.0	8.52	4.42	1.35	0.26
95	48.4	48.2	47.4	46.2	44.6	42.6	40.1	37.3	34.1	30.7	26.8	22.9	18.6	14.2	9.87	5.81	2.38	0.52	0.24
100	44.4	44.1	43.3	42.2	40.5	38.6	36.1	33.5	30.2	26.9	23.1	19.2	15.0	11.0	6.98	3.63	1.44	0.38	0.22
105	39.9	39.7	38.8	37.8	36.1	34.2	31.8	29.2	26.1	22.8	19.1	15.4	11.6	7.94	4.73	2.57	1.20	0.24	0.21
110	35.0	34.8	34.0	33.0	31.4	29.6	27.2	24.7	21.7	18.6	15.1	11.7	8.42	5.63	3.67	2.21	0.91	0.24	0.22
115	29.8	29.6	28.9	27.9	26.4	24.6	22.4	20.0	17.2	14.4	11.4	8.62	6.25	4.62	3.16	1.78	0.60	0.25	0.23
120	24.3	24.2	23.5	22.6	21.1	19.5	17.5	15.4	13.0	10.7	8.43	6.68	5.36	3.95	2.58	1.33	0.33	0.26	0.25
125	18.9	18.7	18.1	17.3	16.1	14.7	13.1	11.4	9.68	8.25	7.01	5.84	4.59	3.20	2.01	0.88	0.29	0.29	0.29
130	13.9	13.8	13.4	12.8	11.9	10.9	9.91	8.91	8.02	7.08	6.05	4.96	3.70	2.49	1.44	0.50	0.36	0.35	0.36
135	10.6	10.5	10.2	9.91	9.46	8.97	8.33	7.64	6.82	5.98	5.01	3.97	2.75	1.78	0.85	0.33	0.33	0.33	0.38
140	8.84	8.78	8.58	8.33	7.93	7.50	6.90	6.29	5.55	4.74	3.74	2.80	1.89	1.07	0.42	0.35	0.33	0.34	0.44
145	7.10	7.06	6.89	6.68	6.32	5.93	5.41	4.87	4.05	3.26	2.47	1.74	1.05	0.48	0.35	0.34	0.34	0.34	0.38
150	5.33	5.30	5.15	4.96	4.65	4.31	3.82	3.19	2.53	1.95	1.38	0.86	0.44	0.34	0.34	0.34	0.35	0.36	0.37
155	3.50	3.48	3.35	3.21	2.94	2.61	2.11	1.69	1.26	0.89	0.54	0.35	0.35	0.35	0.35	0.35	0.35	0.36	0.38
160	1.68	1.67	1.59	1.48	1.24	1.02	0.75	0.56	0.41	0.35	0.36	0.36	0.36	0.35	0.36	0.35	0.36	0.36	0.37
165	0.39	0.38	0.39	0.37	0.37	0.36	0.36	0.36	0.36	0.36	0.36	0.36	0.36	0.35	0.36	0.35	0.35	0.36	0.36
170	0.38	0.38	0.38	0.37	0.37	0.36	0.36	0.36	0.36	0.36	0.36	0.36	0.36	0.36	0.36	0.36	0.36	0.37	0.36
175	0.38	0.38	0.38	0.37	0.37	0.36	0.37	0.36	0.36	0.36	0.36	0.37	0.36	0.36	0.36	0.36	0.37	0.36	0.36
180	0.38	0.38	0.38	0.38	0.37	0.37	0.36	0.36	0.37	0.37	0.37	0.37	0.36	0.37	0.37	0.37	0.37	0.37	0.37

C Range: 0 - 360DEG
 C Interval: 5.0DEG
 Test Speed: HIGH
 Temperature:25DEG
 Operators:yechihong
 Test Date:2019-05-22

γ Range: 0 - 180DEG
 γ Interval: 0.5DEG
 Test System:EVERFINE GO-2000A_V1 SYSTEM V2.0.272
 Humidity:70%
 Test Distance:8.425m [K=1.0000]
 Remarks:

LUMINOUS DISTRIBUTION INTENSITY DATA

Test:U:120.8V I:0.1342A P:16.04W PF:0.9895 Lamp Flux:376.197x1 lm		
NAME: NVS5131200L30D1SN	TYPE:	WEIGHT:
DIM.:	SPEC.:	SERIAL No.:2019-05-22-01
MFR.: AFX	SUR.:0.3MX0.1M	PROTECTION ANGLE:

Table--2

UNIT: cd

C(DEG) γ (DEG)	95	100	105	110	115	120	125	130	135	140	145	150	155	160	165	170	175	180	185
0	65.9	65.9	65.9	65.9	65.9	65.9	65.9	65.9	65.9	65.9	65.9	65.9	65.9	65.9	65.9	65.9	65.9	66.4	66.3
5	65.6	65.6	65.6	65.6	65.6	65.7	65.7	65.7	65.8	65.8	65.8	65.9	65.9	65.9	65.9	65.9	65.9	66.4	66.3
10	64.7	64.8	64.8	64.9	65.0	65.1	65.2	65.4	65.5	65.6	65.7	65.8	65.8	65.9	66.0	66.0	66.0	66.5	66.4
15	63.4	63.4	63.6	63.7	64.0	64.2	64.4	64.6	64.8	65.1	65.3	65.4	65.5	65.6	65.8	65.8	65.9	66.3	66.3
20	61.4	61.6	61.8	62.1	62.4	62.8	63.1	63.5	63.8	64.1	64.4	64.6	64.9	65.0	65.2	65.3	65.3	65.8	65.8
25	59.2	59.4	59.8	60.0	60.4	60.9	61.4	61.8	62.3	62.7	63.1	63.4	63.7	63.9	64.1	64.2	64.3	64.8	64.7
30	56.0	56.3	56.8	57.3	57.9	58.5	59.2	59.7	60.3	60.8	61.3	61.7	62.1	62.3	62.6	62.8	62.8	63.4	63.3
35	52.5	52.9	53.5	54.1	54.9	55.7	56.4	57.1	57.8	58.4	59.1	59.6	60.1	60.5	60.9	61.1	61.2	61.8	61.7
40	48.5	49.1	49.8	50.6	51.5	52.4	53.3	54.1	55.0	55.8	56.7	57.5	58.2	58.9	59.4	59.8	60.0	60.7	60.5
45	44.2	44.8	45.7	46.6	47.6	48.7	49.8	50.9	52.1	53.3	54.6	55.9	57.1	58.2	59.2	59.9	60.2	61.1	60.7
50	39.4	40.1	41.2	42.2	43.5	44.8	46.3	47.9	49.7	51.7	53.8	55.7	57.4	58.8	59.9	60.6	61.1	61.9	61.8
55	34.2	35.1	36.4	37.6	39.2	41.0	43.2	45.7	48.5	51.1	53.6	55.7	57.5	59.0	60.1	61.0	61.5	62.4	61.9
60	28.8	29.9	31.4	33.0	35.2	37.9	41.1	44.4	47.5	50.4	52.9	55.1	57.1	58.7	59.9	60.8	61.3	62.0	61.8
65	23.3	24.6	26.5	28.8	32.0	35.8	39.5	42.9	46.2	49.1	51.8	54.2	56.2	57.8	59.2	60.1	60.6	61.3	61.0
70	17.4	19.2	21.8	25.4	29.6	33.6	37.5	41.1	44.5	47.5	50.3	52.7	54.8	56.6	57.9	58.9	59.4	60.1	59.8
75	12.0	14.5	18.3	22.7	27.1	31.2	35.2	38.9	42.3	45.5	48.3	50.8	53.0	54.8	56.2	57.2	57.7	58.4	58.1
80	7.20	10.9	15.4	19.8	24.3	28.5	32.6	36.3	39.8	43.0	46.0	48.5	50.8	52.6	54.0	55.0	55.6	56.2	55.9
85	3.88	7.92	12.3	16.8	21.2	25.5	29.6	33.4	37.0	40.2	43.2	45.8	48.1	49.9	51.4	52.4	53.0	53.6	53.3
90	1.76	5.18	9.28	13.6	18.0	22.2	26.4	30.2	33.8	37.1	40.0	42.6	44.9	46.7	48.2	49.2	49.8	50.4	50.1
95	0.74	2.97	6.42	10.4	14.6	18.8	22.8	26.6	30.2	33.5	36.5	39.0	41.3	43.1	44.6	45.6	46.2	46.7	46.3
100	0.56	1.79	4.09	7.38	11.2	15.2	19.1	22.8	26.4	29.6	32.5	35.0	37.3	39.0	40.5	41.5	42.1	42.6	42.2
105	0.34	1.47	2.88	5.03	8.13	11.6	15.3	18.8	22.2	25.3	28.2	30.7	32.9	34.6	36.1	37.0	37.6	38.0	37.7
110	0.26	1.11	2.45	3.90	5.79	8.45	11.6	14.7	17.9	20.9	23.7	26.0	28.2	29.8	31.3	32.2	32.8	33.1	32.8
115	0.27	0.72	1.96	3.34	4.76	6.35	8.50	11.0	13.8	16.4	19.0	21.2	23.2	24.8	26.2	27.0	27.6	27.9	27.6
120	0.28	0.39	1.45	2.73	4.08	5.41	6.69	8.25	10.2	12.3	14.5	16.4	18.2	19.7	20.9	21.7	22.3	22.5	22.2
125	0.31	0.31	0.93	2.09	3.35	4.61	5.82	6.94	8.01	9.32	10.8	12.2	13.6	14.8	15.9	16.6	17.1	17.2	17.0
130	0.36	0.37	0.50	1.45	2.58	3.74	4.88	5.93	6.92	7.82	8.66	9.40	10.4	11.1	11.8	12.2	12.6	12.7	12.5
135	0.34	0.35	0.36	0.79	1.79	2.84	3.87	4.84	5.77	6.58	7.36	8.01	8.62	9.09	9.47	9.71	9.88	9.92	9.82
140	0.35	0.35	0.36	0.39	1.02	1.91	2.82	3.70	4.54	5.29	6.00	6.58	7.13	7.55	7.91	8.12	8.29	8.29	8.20
145	0.35	0.36	0.36	0.37	0.41	0.99	1.74	2.50	3.25	3.91	4.54	5.06	5.55	5.93	6.25	6.44	6.59	6.59	6.50
150	0.36	0.36	0.35	0.36	0.36	0.38	0.75	1.34	1.94	2.50	3.05	3.50	3.93	4.26	4.54	4.70	4.85	4.82	4.75
155	0.36	0.35	0.35	0.36	0.36	0.36	0.36	0.43	0.76	1.14	1.57	1.92	2.29	2.54	2.79	2.93	3.04	3.01	2.95
160	0.36	0.36	0.35	0.35	0.36	0.36	0.36	0.37	0.37	0.38	0.41	0.56	0.77	0.93	1.11	1.19	1.29	1.26	1.21
165	0.36	0.35	0.36	0.36	0.36	0.37	0.36	0.36	0.36	0.37	0.36	0.37	0.37	0.38	0.37	0.38	0.37	0.37	0.36
170	0.36	0.36	0.36	0.36	0.36	0.36	0.36	0.36	0.36	0.36	0.37	0.37	0.37	0.38	0.37	0.37	0.37	0.38	0.36
175	0.37	0.37	0.36	0.37	0.36	0.36	0.35	0.36	0.36	0.36	0.36	0.36	0.37	0.37	0.37	0.37	0.37	0.38	0.36
180	0.38	0.37	0.37	0.37	0.37	0.37	0.36	0.37	0.37	0.37	0.37	0.38	0.37	0.38	0.38	0.37	0.38	0.38	0.37

C Range: 0 - 360DEG
 C Interval: 5.0DEG
 Test Speed: HIGH
 Temperature:25DEG
 Operators:yechihong
 Test Date:2019-05-22

γ Range: 0 - 180DEG
 γ Interval: 0.5DEG
 Test System:EVERFINE GO-2000A_V1 SYSTEM V2.0.272
 Humidity:70%
 Test Distance:8.425m [K=1.0000]
 Remarks:

LUMINOUS DISTRIBUTION INTENSITY DATA

Test:U:120.8V I:0.1342A P:16.04W PF:0.9895 Lamp Flux:376.197x1 lm		
NAME: NVS5131200L30D1SN	TYPE:	WEIGHT:
DIM.:	SPEC.:	SERIAL No.:2019-05-22-01
MFR.: AFX	SUR.:0.3MX0.1M	PROTECTION ANGLE:

Table--3

UNIT: cd

C(DEG) γ (DEG)	190	195	200	205	210	215	220	225	230	235	240	245	250	255	260	265	270	275	280
0	66.3	66.2	66.2	66.1	66.1	66.1	66.1	66.0	66.0	66.0	66.0	65.9	65.9	65.9	65.9	65.9	65.9	65.9	65.9
5	66.3	66.2	66.2	66.1	66.1	66.0	65.9	65.9	65.8	65.8	65.7	65.7	65.7	65.6	65.6	65.6	65.6	65.6	65.6
10	66.4	66.3	66.2	66.1	66.0	65.9	65.7	65.6	65.4	65.3	65.2	65.0	64.9	64.8	64.8	64.8	64.8	64.8	64.8
15	66.2	66.1	65.9	65.8	65.6	65.4	65.2	64.9	64.7	64.4	64.2	63.9	63.8	63.6	63.5	63.4	63.4	63.4	63.5
20	65.7	65.5	65.3	65.1	64.9	64.5	64.2	63.9	63.5	63.1	62.7	62.4	62.1	61.8	61.6	61.4	61.5	61.4	61.6
25	64.6	64.4	64.2	63.9	63.6	63.2	62.8	62.3	61.9	61.3	60.8	60.3	59.9	59.5	59.2	58.9	59.1	59.0	59.2
30	63.2	62.9	62.6	62.3	61.9	61.4	60.9	60.3	59.7	59.1	58.4	57.8	57.2	56.7	56.3	55.9	56.0	56.0	56.3
35	61.5	61.2	60.8	60.3	59.8	59.1	58.5	57.8	57.1	56.3	55.6	54.8	54.1	53.4	52.9	52.5	52.5	52.5	53.0
40	60.2	59.7	59.1	58.4	57.6	56.7	55.8	54.9	54.0	53.1	52.2	51.3	50.5	49.6	49.0	48.5	48.5	48.6	49.2
45	60.2	59.4	58.4	57.2	55.9	54.6	53.3	52.0	50.8	49.6	48.5	47.4	46.5	45.5	44.7	44.1	44.2	44.2	45.0
50	61.0	60.2	59.0	57.5	55.7	53.6	51.5	49.4	47.7	46.0	44.6	43.2	42.1	40.9	40.0	39.3	39.2	39.4	40.3
55	61.3	60.4	59.1	57.5	55.6	53.3	50.8	48.1	45.3	42.7	40.7	38.9	37.4	36.0	35.0	34.1	33.9	34.2	35.3
60	61.2	60.1	58.8	57.0	55.0	52.6	50.0	47.0	43.9	40.5	37.3	34.7	32.7	30.9	29.6	28.6	28.3	28.8	30.0
65	60.4	59.3	57.9	56.1	54.0	51.5	48.8	45.7	42.4	38.8	35.0	31.2	28.2	25.9	24.1	22.9	22.6	23.1	24.6
70	59.2	58.1	56.6	54.7	52.5	50.0	47.1	43.9	40.5	36.7	32.9	28.7	24.5	21.1	18.8	17.1	16.7	17.4	19.3
75	57.4	56.3	54.8	52.9	50.6	48.0	45.0	41.7	38.2	34.4	30.4	26.1	21.7	17.2	13.8	11.6	11.0	12.0	14.6
80	55.3	54.1	52.6	50.6	48.2	45.5	42.6	39.2	35.6	31.7	27.6	23.3	18.8	14.3	9.88	6.74	5.88	7.24	10.9
85	52.5	51.3	49.8	47.8	45.5	42.7	39.7	36.3	32.7	28.7	24.6	20.2	15.8	11.2	6.94	3.23	1.90	3.91	8.06
90	49.4	48.2	46.6	44.6	42.3	39.5	36.5	33.1	29.4	25.4	21.3	16.9	12.6	8.21	4.30	1.29	0.19	1.82	5.38
95	45.7	44.5	43.0	41.0	38.7	35.9	32.9	29.5	25.8	21.9	17.8	13.6	9.43	5.48	2.31	0.53	0.18	0.73	3.16
100	41.6	40.4	38.9	36.9	34.7	31.9	29.0	25.6	22.0	18.2	14.3	10.3	6.57	3.40	1.42	0.37	0.18	0.56	1.75
105	37.1	35.9	34.5	32.5	30.3	27.6	24.7	21.4	18.0	14.4	10.8	7.31	4.44	2.47	1.11	0.24	0.19	0.38	1.22
110	32.2	31.0	29.6	27.7	25.6	23.0	20.3	17.2	14.0	10.8	7.79	5.27	3.51	2.05	0.79	0.23	0.20	0.25	0.99
115	27.0	25.9	24.6	22.8	20.8	18.4	15.9	13.1	10.5	7.91	5.90	4.39	2.97	1.61	0.43	0.23	0.23	0.25	0.84
120	21.7	20.7	19.5	17.8	16.1	14.0	11.9	9.75	7.95	6.37	5.09	3.74	2.40	1.12	0.29	0.23	0.25	0.25	0.53
125	16.6	15.7	14.7	13.3	12.0	10.4	9.12	7.76	6.69	5.53	4.30	3.03	1.78	0.63	0.30	0.24	0.28	0.27	0.32
130	12.2	11.7	11.0	10.2	9.32	8.52	7.69	6.72	5.71	4.60	3.46	2.28	1.16	0.34	0.30	0.27	0.29	0.29	0.33
135	9.66	9.37	9.09	8.61	8.03	7.28	6.50	5.57	4.65	3.62	2.58	1.52	0.55	0.32	0.30	0.28	0.30	0.29	0.31
140	8.06	7.77	7.44	6.98	6.46	5.79	5.09	4.29	3.45	2.53	1.63	0.74	0.31	0.30	0.30	0.29	0.31	0.29	0.31
145	6.38	6.13	5.82	5.39	4.93	4.35	3.73	3.01	2.28	1.50	0.76	0.32	0.31	0.30	0.31	0.29	0.31	0.29	0.32
150	4.64	4.40	4.13	3.77	3.37	2.86	2.34	1.73	1.14	0.56	0.32	0.31	0.32	0.30	0.32	0.30	0.32	0.30	0.33
155	2.86	2.66	2.45	2.13	1.81	1.41	1.02	0.59	0.34	0.33	0.33	0.31	0.33	0.32	0.33	0.32	0.34	0.33	0.34
160	1.15	0.99	0.86	0.65	0.50	0.36	0.35	0.34	0.34	0.33	0.33	0.33	0.34	0.34	0.35	0.34	0.36	0.36	0.36
165	0.36	0.36	0.35	0.35	0.35	0.34	0.35	0.35	0.35	0.35	0.35	0.35	0.35	0.35	0.36	0.36	0.37	0.36	0.36
170	0.36	0.36	0.36	0.37	0.36	0.35	0.36	0.35	0.35	0.36	0.36	0.35	0.36	0.35	0.36	0.36	0.37	0.36	0.37
175	0.38	0.37	0.36	0.36	0.37	0.35	0.37	0.36	0.36	0.36	0.36	0.36	0.36	0.36	0.37	0.37	0.38	0.37	0.37
180	0.38	0.37	0.37	0.37	0.37	0.36	0.37	0.37	0.36	0.37	0.37	0.36	0.37	0.37	0.37	0.37	0.37	0.38	0.37

C Range: 0 - 360DEG
 C Interval: 5.0DEG
 Test Speed: HIGH
 Temperature:25DEG
 Operators:yechihong
 Test Date:2019-05-22

γ Range: 0 - 180DEG
 γ Interval: 0.5DEG
 Test System:EVERFINE GO-2000A_V1 SYSTEM V2.0.272
 Humidity:70%
 Test Distance:8.425m [K=1.0000]
 Remarks:

LUMINOUS DISTRIBUTION INTENSITY DATA

Test:U:120.8V I:0.1342A P:16.04W PF:0.9895 Lamp Flux:376.197x1 lm		
NAME: NVS5131200L30D1SN	TYPE:	WEIGHT:
DIM.:	SPEC.:	SERIAL No.:2019-05-22-01
MFR.: AFX	SUR.:0.3MX0.1M	PROTECTION ANGLE:

Table--4

UNIT: cd

C(DEG) γ (DEG)	285	290	295	300	305	310	315	320	325	330	335	340	345	350	355				
0	65.9	65.9	65.9	65.9	65.9	65.9	65.9	65.9	65.9	65.9	65.9	65.9	65.9	65.9	65.9				
5	65.6	65.7	65.7	65.7	65.7	65.8	65.8	65.8	65.9	65.9	66.0	66.0	66.0	66.0	66.1				
10	64.8	64.9	65.0	65.1	65.3	65.4	65.6	65.7	65.9	66.0	66.1	66.2	66.2	66.3	66.3				
15	63.6	63.8	64.0	64.2	64.5	64.8	65.0	65.3	65.5	65.8	66.0	66.1	66.3	66.4	66.4				
20	61.8	62.1	62.5	62.9	63.3	63.7	64.1	64.5	64.9	65.2	65.5	65.7	65.9	66.1	66.2				
25	59.6	60.0	60.5	61.1	61.6	62.2	62.8	63.3	63.7	64.2	64.5	64.9	65.1	65.3	65.5				
30	56.8	57.4	58.1	58.8	59.5	60.3	60.9	61.6	62.1	62.7	63.1	63.6	63.9	64.1	64.3				
35	53.6	54.4	55.2	56.1	56.9	57.8	58.6	59.4	60.0	60.8	61.3	61.9	62.3	62.6	62.8				
40	49.9	50.9	51.8	52.9	53.8	54.9	55.9	56.9	57.8	58.7	59.5	60.2	60.8	61.3	61.6				
45	45.9	47.0	48.1	49.2	50.4	51.7	53.0	54.3	55.6	57.0	58.2	59.4	60.3	61.0	61.5				
50	41.4	42.7	44.0	45.4	46.9	48.6	50.4	52.4	54.4	56.5	58.3	59.8	61.0	61.9	62.8				
55	36.5	38.1	39.7	41.6	43.7	46.2	48.9	51.7	54.3	56.5	58.5	60.1	61.4	62.3	62.9				
60	31.5	33.4	35.6	38.2	41.4	44.8	48.1	51.0	53.7	56.1	58.2	59.9	61.3	62.2	62.8				
65	26.5	29.1	32.2	36.0	39.8	43.4	46.8	49.9	52.7	55.2	57.4	59.2	60.6	61.6	62.2				
70	21.9	25.5	29.8	33.9	37.9	41.7	45.1	48.4	51.3	53.9	56.1	58.0	59.4	60.5	61.1				
75	18.3	22.9	27.3	31.6	35.7	39.5	43.1	46.4	49.4	52.1	54.4	56.3	57.7	58.8	59.4				
80	15.4	20.1	24.6	29.0	33.1	37.1	40.7	44.1	47.1	49.8	52.1	54.1	55.6	56.7	57.3				
85	12.5	17.1	21.7	26.1	30.3	34.3	37.9	41.4	44.4	47.2	49.5	51.4	53.0	54.1	54.7				
90	9.56	14.1	18.6	23.0	27.1	31.2	34.8	38.3	41.4	44.1	46.4	48.4	49.9	51.0	51.6				
95	6.74	11.0	15.3	19.6	23.7	27.7	31.4	34.8	37.8	40.6	42.9	44.8	46.3	47.4	48.0				
100	4.41	7.99	11.9	16.0	20.1	24.0	27.6	31.0	34.0	36.7	38.9	40.9	42.3	43.4	43.9				
105	2.76	5.47	8.81	12.5	16.3	20.0	23.5	26.8	29.7	32.4	34.6	36.5	37.9	38.9	39.5				
110	1.95	3.81	6.20	9.25	12.5	16.0	19.2	22.4	25.1	27.7	29.8	31.7	33.1	34.1	34.6				
115	1.57	2.76	4.56	6.47	9.02	12.0	14.9	17.9	20.4	22.9	24.9	26.6	27.9	28.9	29.4				
120	1.44	2.26	3.57	5.18	6.51	8.38	10.7	13.3	15.8	18.0	19.8	21.5	22.6	23.6	24.0				
125	1.16	1.96	2.89	4.21	5.56	6.59	7.79	9.40	11.3	13.4	15.0	16.4	17.4	18.2	18.6				
130	0.73	1.66	2.44	3.41	4.63	5.68	6.56	7.43	8.31	9.50	11.0	12.0	12.8	13.4	13.7				
135	0.35	1.06	1.78	2.62	3.61	4.68	5.49	6.22	6.91	7.62	8.41	9.45	9.88	10.2	10.4				
140	0.31	0.51	1.19	1.77	2.54	3.51	4.41	5.08	5.57	6.12	6.65	7.47	8.19	8.49	8.65				
145	0.31	0.31	0.58	1.13	1.60	2.30	3.05	3.84	4.39	4.76	5.10	5.49	6.33	6.72	6.87				
150	0.31	0.33	0.32	0.49	0.88	1.28	1.78	2.41	2.99	3.50	3.71	3.96	4.22	4.86	5.00				
155	0.32	0.33	0.32	0.35	0.36	0.56	0.84	1.17	1.60	2.02	2.35	2.53	2.64	3.14	3.22				
160	0.36	0.35	0.36	0.35	0.35	0.35	0.35	0.39	0.54	0.76	0.95	1.15	1.23	1.37	1.55				
165	0.36	0.37	0.36	0.36	0.36	0.36	0.36	0.36	0.36	0.35	0.36	0.36	0.36	0.36	0.37				
170	0.37	0.37	0.37	0.36	0.37	0.37	0.36	0.36	0.36	0.37	0.37	0.37	0.36	0.37	0.37				
175	0.37	0.37	0.38	0.38	0.36	0.36	0.37	0.37	0.36	0.37	0.37	0.38	0.37	0.37	0.37				
180	0.37	0.37	0.38	0.37	0.37	0.37	0.37	0.37	0.37	0.37	0.38	0.38	0.38	0.37	0.38				

C Range: 0 - 360DEG
 C Interval: 5.0DEG
 Test Speed: HIGH
 Temperature:25DEG
 Operators:yechihong
 Test Date:2019-05-22

γ Range: 0 - 180DEG
 γ Interval: 0.5DEG
 Test System:EVERFINE GO-2000A_V1 SYSTEM V2.0.272
 Humidity:70%
 Test Distance:8.425m [K=1.0000]
 Remarks:

Photometric Data Table [cd]

G/C	0.0	5.0	10.0	15.0	20.0	25.0	30.0	35.0	40.0	45.0
0.0	66.37	66.30	66.28	66.22	66.17	66.14	66.13	66.09	66.05	66.02
2.5	66.37	66.31	66.29	66.22	66.19	66.15	66.12	66.09	66.04	66.01
5.0	66.49	66.41	66.36	66.30	66.23	66.16	66.11	66.05	65.98	65.89
7.5	66.63	66.56	66.49	66.40	66.32	66.22	66.15	66.04	65.92	65.79
10.0	66.76	66.69	66.61	66.51	66.37	66.26	66.13	65.97	65.83	65.65
12.5	66.85	66.75	66.67	66.52	66.39	66.22	66.05	65.86	65.65	65.42
15.0	66.88	66.77	66.67	66.50	66.32	66.12	65.89	65.66	65.39	65.11
17.5	66.79	66.69	66.56	66.38	66.17	65.91	65.67	65.35	65.03	64.70
20.0	66.61	66.49	66.33	66.15	65.90	65.62	65.30	64.97	64.58	64.15
22.5	66.27	66.17	65.98	65.78	65.51	65.20	64.83	64.44	64.00	63.53
25.0	65.84	65.74	65.53	65.32	64.99	64.66	64.26	63.81	63.27	62.79
27.5	65.28	65.18	64.95	64.73	64.35	63.98	63.53	63.05	62.44	61.88
30.0	64.62	64.54	64.28	64.03	63.62	63.23	62.70	62.17	61.51	60.87
32.5	63.91	63.82	63.56	63.26	62.79	62.36	61.77	61.17	60.44	59.76
35.0	63.16	63.05	62.76	62.41	61.92	61.42	60.74	60.09	59.29	58.50
37.5	62.47	62.36	62.02	61.61	61.02	60.44	59.68	58.95	58.04	57.18
40.0	61.92	61.78	61.39	60.89	60.21	59.51	58.63	57.76	56.73	55.79
42.5	61.66	61.47	61.01	60.39	59.57	58.69	57.63	56.59	55.42	54.33
45.0	61.80	61.57	61.04	60.24	59.23	58.10	56.82	55.52	54.14	52.86
47.5	62.34	62.10	61.50	60.56	59.30	57.89	56.30	54.67	53.00	51.48
50.0	62.78	62.51	61.90	60.94	59.63	58.08	56.18	54.14	52.10	50.20
52.5	63.10	62.82	62.18	61.18	59.83	58.22	56.25	54.00	51.51	49.14
55.0	63.27	62.97	62.32	61.31	59.91	58.23	56.19	53.90	51.25	48.42
57.5	63.31	63.01	62.32	61.28	59.84	58.13	56.03	53.66	50.95	48.03
60.0	63.21	62.91	62.21	61.14	59.69	57.90	55.75	53.33	50.55	47.51
62.5	62.99	62.70	61.97	60.89	59.37	57.56	55.36	52.87	50.01	46.91
65.0	62.62	62.33	61.61	60.50	58.96	57.11	54.85	52.30	49.37	46.24
67.5	62.12	61.82	61.09	59.98	58.42	56.52	54.22	51.64	48.66	45.45
70.0	61.51	61.22	60.44	59.35	57.75	55.82	53.48	50.86	47.83	44.58
72.5	60.75	60.46	59.67	58.58	56.94	54.99	52.63	49.97	46.89	43.59
75.0	59.88	59.60	58.79	57.68	56.03	54.07	51.66	48.99	45.87	42.53
77.5	58.87	58.60	57.80	56.66	55.00	53.02	50.59	47.87	44.73	41.36
80.0	57.76	57.50	56.68	55.53	53.86	51.86	49.40	46.68	43.50	40.12
82.5	56.52	56.25	55.41	54.28	52.60	50.59	48.10	45.35	42.19	38.76
85.0	55.17	54.91	54.06	52.90	51.21	49.22	46.71	43.97	40.77	37.33
87.5	53.70	53.42	52.55	51.42	49.71	47.71	45.22	42.44	39.26	35.81
90.0	52.10	51.85	50.98	49.84	48.14	46.14	43.64	40.87	37.67	34.20
92.5	50.31	50.00	49.25	48.09	46.39	44.40	41.88	39.11	35.91	32.47
95.0	48.40	48.16	47.36	46.24	44.56	42.58	40.07	37.31	34.11	30.67
97.5	46.43	46.18	45.38	44.28	42.60	40.68	38.16	35.43	32.22	28.82
100.0	44.36	44.11	43.33	42.21	40.53	38.60	36.14	33.47	30.25	26.88
102.5	42.17	41.93	41.11	40.05	38.37	36.45	34.02	31.36	28.19	24.89
105.0	39.89	39.66	38.85	37.78	36.13	34.24	31.83	29.19	26.07	22.79
107.5	37.50	37.28	36.49	35.44	33.81	31.94	29.55	26.94	23.89	20.67
110.0	35.01	34.83	34.03	33.00	31.40	29.55	27.21	24.66	21.66	18.55
112.5	32.44	32.26	31.50	30.47	28.89	27.09	24.82	22.34	19.42	16.43
115.0	29.80	29.62	28.87	27.89	26.36	24.60	22.38	19.98	17.21	14.38
117.5	27.11	26.92	26.20	25.24	23.77	22.07	19.95	17.65	15.04	12.43
120.0	24.35	24.17	23.47	22.58	21.15	19.54	17.54	15.40	13.00	10.68
122.5	21.58	21.42	20.76	19.91	18.57	17.07	15.23	13.27	11.17	9.232
125.0	18.88	18.73	18.12	17.34	16.09	14.74	13.08	11.41	9.675	8.253
127.5	16.29	16.17	15.61	14.93	13.82	12.65	11.25	9.935	8.657	7.623
130.0	13.93	13.83	13.35	12.78	11.85	10.92	9.906	8.914	8.023	7.082
132.5	11.96	11.87	11.49	11.08	10.43	9.726	9.011	8.280	7.439	6.535
135.0	10.58	10.49	10.21	9.906	9.460	8.971	8.333	7.642	6.823	5.977
137.5	9.686	9.597	9.384	9.136	8.709	8.245	7.641	6.974	6.198	5.389
140.0	8.842	8.776	8.578	8.334	7.933	7.496	6.901	6.293	5.554	4.742
142.5	7.981	7.932	7.746	7.520	7.135	6.716	6.175	5.580	4.858	3.986
145.0	7.099	7.060	6.886	6.678	6.319	5.930	5.408	4.866	4.045	3.259
147.5	6.221	6.184	6.026	5.826	5.492	5.132	4.642	4.023	3.260	2.575
150.0	5.326	5.295	5.149	4.963	4.646	4.310	3.823	3.186	2.529	1.949
152.5	4.412	4.383	4.249	4.085	3.790	3.491	2.941	2.406	1.854	1.376
155.0	3.497	3.477	3.350	3.206	2.939	2.606	2.113	1.687	1.259	0.8900
157.5	2.577	2.566	2.449	2.331	2.086	1.748	1.391	1.062	0.7409	0.4871
160.0	1.679	1.673	1.585	1.476	1.242	1.016	0.7504	0.5567	0.4083	0.3532
162.5	0.8503	0.8567	0.7733	0.7149	0.5724	0.4654	0.3866	0.3531	0.3576	0.3531
165.0	0.3896	0.3802	0.3851	0.3712	0.3667	0.3623	0.3621	0.3576	0.3576	0.3577
167.5	0.3848	0.3757	0.3759	0.3712	0.3621	0.3621	0.3621	0.3575	0.3666	0.3621
170.0	0.3803	0.3757	0.3757	0.3712	0.3667	0.3621	0.3621	0.3621	0.3621	0.3576
172.5	0.3757	0.3757	0.3757	0.3712	0.3667	0.3622	0.3621	0.3576	0.3576	0.3621
175.0	0.3757	0.3757	0.3757	0.3712	0.3712	0.3576	0.3667	0.3576	0.3621	0.3621
177.5	0.3757	0.3802	0.3757	0.3802	0.3667	0.3667	0.3622	0.3622	0.3621	0.3621
180.0	0.3757	0.3803	0.3757	0.3757	0.3667	0.3712	0.3621	0.3621	0.3667	0.3712

C Range: 0 - 360DEG
 C Interval: 5.0DEG
 Test Speed: HIGH
 Temperature: 25DEG
 Operators: yechihong
 Test Date: 2019-05-22

γ Range: 0 - 180DEG
 γ Interval: 0.5DEG
 Test System: EVERFINE GO-2000A_V1 SYSTEM V2.0.272
 Humidity: 70%
 Test Distance: 8.425m [K=1.0000]
 Remarks:

Photometric Data Table [cd]

G/C	50.0	55.0	60.0	65.0	70.0	75.0	80.0	85.0	90.0	95.0
0.0	66.02	66.00	65.96	65.95	65.92	65.92	65.92	65.90	65.90	65.91
2.5	65.98	65.96	65.91	65.92	65.90	65.87	65.83	65.82	65.82	65.83
5.0	65.86	65.82	65.76	65.74	65.69	65.68	65.61	65.62	65.61	65.61
7.5	65.70	65.63	65.50	65.44	65.40	65.34	65.29	65.25	65.26	65.24
10.0	65.49	65.36	65.19	65.07	64.97	64.86	64.79	64.75	64.75	64.74
12.5	65.19	64.97	64.77	64.58	64.39	64.28	64.16	64.12	64.11	64.13
15.0	64.81	64.51	64.23	64.00	63.77	63.60	63.42	63.38	63.33	63.35
17.5	64.31	63.99	63.63	63.30	63.01	62.74	62.53	62.47	62.42	62.46
20.0	63.73	63.31	62.87	62.48	62.08	61.78	61.55	61.47	61.40	61.45
22.5	63.02	62.53	62.02	61.54	61.08	60.71	60.45	60.36	60.28	60.35
25.0	62.18	61.64	61.02	60.50	59.94	59.60	59.32	59.22	59.13	59.23
27.5	61.23	60.64	59.91	59.30	58.67	58.22	57.90	57.77	57.66	57.74
30.0	60.14	59.50	58.70	58.01	57.29	56.74	56.25	56.02	55.89	56.01
32.5	58.95	58.23	57.38	56.61	55.83	55.18	54.58	54.27	54.12	54.28
35.0	57.64	56.82	55.92	55.09	54.22	53.49	52.81	52.47	52.30	52.48
37.5	56.24	55.37	54.35	53.45	52.51	51.71	50.93	50.54	50.35	50.55
40.0	54.74	53.77	52.68	51.70	50.69	49.80	48.98	48.48	48.30	48.52
42.5	53.15	52.06	50.91	49.85	48.74	47.78	46.88	46.35	46.13	46.38
45.0	51.54	50.31	49.04	47.88	46.69	45.66	44.68	44.12	43.88	44.15
47.5	49.92	48.53	47.12	45.85	44.56	43.44	42.36	41.75	41.45	41.79
50.0	48.35	46.72	45.15	43.73	42.35	41.15	39.99	39.28	38.99	39.36
52.5	46.90	44.98	43.15	41.60	40.06	38.76	37.50	36.74	36.42	36.81
55.0	45.70	43.33	41.20	39.41	37.71	36.29	34.93	34.12	33.76	34.20
57.5	44.81	41.91	39.35	37.26	35.35	33.78	32.33	31.42	31.04	31.50
60.0	44.23	40.76	37.67	35.18	33.01	31.29	29.73	28.73	28.31	28.79
62.5	43.55	39.97	36.26	33.25	30.77	28.90	27.26	26.22	25.72	26.15
65.0	42.78	39.12	35.24	31.58	28.63	26.39	24.48	23.30	22.73	23.30
67.5	41.92	38.21	34.21	30.09	26.47	23.74	21.54	20.17	19.61	20.29
70.0	40.98	37.19	33.11	28.93	24.68	21.37	18.83	17.24	16.62	17.41
72.5	39.93	36.09	31.95	27.70	23.23	19.23	16.24	14.43	13.73	14.63
75.0	38.81	34.93	30.72	26.41	21.89	17.40	13.84	11.71	10.93	11.97
77.5	37.62	33.67	29.42	25.07	20.50	15.91	11.70	9.158	8.260	9.463
80.0	36.32	32.36	28.06	23.67	19.06	14.45	9.905	6.837	5.785	7.202
82.5	34.97	30.96	26.63	22.21	17.57	12.97	8.444	4.854	3.625	5.318
85.0	33.52	29.49	25.14	20.71	16.06	11.47	7.026	3.321	1.863	3.879
87.5	31.97	27.95	23.59	19.14	14.51	9.976	5.683	2.224	0.6956	2.715
90.0	30.36	26.34	21.97	17.55	12.95	8.519	4.422	1.354	0.2630	1.762
92.5	28.63	24.61	20.28	15.89	11.38	7.110	3.305	0.7776	0.2402	1.093
95.0	26.85	22.86	18.56	14.24	9.865	5.808	2.377	0.5249	0.2354	0.7419
97.5	25.00	21.03	16.81	12.59	8.384	4.614	1.740	0.4524	0.2309	0.6563
100.0	23.09	19.19	15.04	10.96	6.985	3.631	1.444	0.3797	0.2218	0.5561
102.5	21.14	17.30	13.27	9.393	5.746	2.928	1.322	0.2985	0.2173	0.4431
105.0	19.15	15.43	11.57	7.938	4.732	2.575	1.200	0.2399	0.2128	0.3392
107.5	17.13	13.56	9.913	6.631	4.023	2.398	1.060	0.2399	0.2262	0.2626
110.0	15.13	11.75	8.422	5.627	3.671	2.209	0.9148	0.2399	0.2173	0.2626
112.5	13.19	10.08	7.151	4.995	3.424	2.009	0.7528	0.2445	0.2128	0.2626
115.0	11.38	8.619	6.248	4.621	3.155	1.778	0.6022	0.2490	0.2263	0.2671
117.5	9.760	7.452	5.701	4.299	2.879	1.561	0.4531	0.2580	0.2354	0.2716
120.0	8.435	6.684	5.356	3.945	2.577	1.330	0.3260	0.2626	0.2534	0.2807
122.5	7.555	6.268	4.977	3.584	2.283	1.095	0.2942	0.2762	0.2761	0.2852
125.0	7.013	5.843	4.587	3.199	2.006	0.8774	0.2942	0.2898	0.2852	0.3079
127.5	6.530	5.413	4.156	2.842	1.722	0.6782	0.3078	0.3215	0.3344	0.3397
130.0	6.053	4.964	3.704	2.490	1.436	0.4972	0.3575	0.3528	0.3576	0.3621
132.5	5.543	4.494	3.252	2.139	1.141	0.3621	0.3486	0.3350	0.3757	0.3531
135.0	5.011	3.971	2.754	1.782	0.8514	0.3350	0.3260	0.3306	0.3757	0.3440
137.5	4.425	3.372	2.319	1.434	0.5902	0.3351	0.3259	0.3440	0.4117	0.3486
140.0	3.745	2.801	1.889	1.067	0.4169	0.3487	0.3303	0.3440	0.4442	0.3531
142.5	3.093	2.262	1.458	0.7467	0.3621	0.3576	0.3305	0.3442	0.3941	0.3531
145.0	2.465	1.737	1.047	0.4793	0.3486	0.3442	0.3395	0.3396	0.3849	0.3486
147.5	1.891	1.271	0.6932	0.3486	0.3487	0.3440	0.3483	0.3531	0.3803	0.3575
150.0	1.378	0.8637	0.4355	0.3440	0.3441	0.3443	0.3486	0.3575	0.3714	0.3577
152.5	0.9109	0.5108	0.3486	0.3396	0.3530	0.3440	0.3531	0.3575	0.3712	0.3623
155.0	0.5395	0.3532	0.3531	0.3486	0.3531	0.3485	0.3486	0.3620	0.3758	0.3621
157.5	0.3624	0.3576	0.3486	0.3531	0.3575	0.3530	0.3577	0.3576	0.3757	0.3621
160.0	0.3577	0.3576	0.3574	0.3486	0.3576	0.3486	0.3576	0.3576	0.3668	0.3576
162.5	0.3576	0.3531	0.3531	0.3576	0.3531	0.3531	0.3532	0.3575	0.3666	0.3621
165.0	0.3621	0.3576	0.3576	0.3486	0.3620	0.3531	0.3486	0.3621	0.3621	0.3579
167.5	0.3621	0.3576	0.3531	0.3621	0.3618	0.3576	0.3666	0.3576	0.3621	0.3621
170.0	0.3622	0.3621	0.3621	0.3621	0.3621	0.3621	0.3576	0.3711	0.3577	0.3622
172.5	0.3666	0.3621	0.3621	0.3622	0.3621	0.3666	0.3621	0.3621	0.3667	0.3668
175.0	0.3577	0.3667	0.3621	0.3621	0.3621	0.3622	0.3712	0.3621	0.3621	0.3712
177.5	0.3621	0.3621	0.3621	0.3621	0.3667	0.3667	0.3621	0.3622	0.3712	0.3712
180.0	0.3667	0.3667	0.3621	0.3667	0.3667	0.3667	0.3712	0.3712	0.3712	0.3757

C Range: 0 - 360DEG
 C Interval: 5.0DEG
 Test Speed: HIGH
 Temperature: 25DEG
 Operators: yechihong
 Test Date: 2019-05-22

γ Range: 0 - 180DEG
 γ Interval: 0.5DEG
 Test System: EVERFINE GO-2000A_V1 SYSTEM V2.0.272
 Humidity: 70%
 Test Distance: 8.425m [K=1.0000]
 Remarks:

Photometric Data Table [cd]

G/C	100.0	105.0	110.0	115.0	120.0	125.0	130.0	135.0	140.0	145.0
0.0	65.89	65.88	65.86	65.90	65.88	65.90	65.94	65.95	65.91	65.92
2.5	65.81	65.82	65.82	65.82	65.81	65.83	65.84	65.89	65.86	65.85
5.0	65.60	65.61	65.62	65.65	65.67	65.71	65.74	65.81	65.81	65.82
7.5	65.27	65.27	65.32	65.39	65.46	65.53	65.58	65.68	65.74	65.79
10.0	64.78	64.83	64.90	65.01	65.12	65.25	65.36	65.50	65.61	65.68
12.5	64.17	64.27	64.37	64.54	64.69	64.88	65.03	65.20	65.38	65.51
15.0	63.43	63.57	63.71	63.95	64.15	64.41	64.61	64.85	65.07	65.26
17.5	62.56	62.75	62.95	63.23	63.52	63.82	64.12	64.41	64.65	64.89
20.0	61.57	61.85	62.08	62.40	62.75	63.12	63.48	63.81	64.13	64.42
22.5	60.52	60.86	61.08	61.48	61.87	62.32	62.72	63.12	63.46	63.80
25.0	59.40	59.78	60.00	60.43	60.90	61.39	61.84	62.32	62.68	63.09
27.5	57.97	58.38	58.70	59.22	59.77	60.32	60.83	61.36	61.79	62.22
30.0	56.34	56.83	57.28	57.89	58.53	59.15	59.70	60.29	60.77	61.27
32.5	54.66	55.26	55.76	56.46	57.14	57.84	58.46	59.14	59.65	60.20
35.0	52.89	53.55	54.15	54.93	55.68	56.42	57.10	57.83	58.42	59.07
37.5	51.03	51.75	52.44	53.27	54.06	54.90	55.63	56.44	57.12	57.88
40.0	49.06	49.83	50.59	51.46	52.35	53.27	54.11	55.02	55.82	56.69
42.5	46.96	47.83	48.63	49.62	50.53	51.57	52.51	53.57	54.55	55.58
45.0	44.77	45.71	46.59	47.65	48.67	49.81	50.89	52.11	53.33	54.63
47.5	42.50	43.50	44.46	45.62	46.75	48.03	49.32	50.79	52.34	54.00
50.0	40.10	41.21	42.24	43.52	44.80	46.30	47.87	49.69	51.67	53.75
52.5	37.64	38.82	39.97	41.36	42.86	44.64	46.60	48.92	51.39	53.72
55.0	35.12	36.37	37.65	39.22	41.00	43.18	45.68	48.49	51.15	53.55
57.5	32.52	33.90	35.32	37.17	39.29	41.98	45.06	48.06	50.81	53.29
60.0	29.91	31.40	33.04	35.21	37.85	41.14	44.44	47.54	50.36	52.93
62.5	27.30	28.94	30.82	33.45	36.72	40.35	43.74	46.92	49.81	52.43
65.0	24.63	26.47	28.75	32.00	35.78	39.49	42.95	46.20	49.14	51.84
67.5	21.84	24.07	26.92	30.81	34.75	38.54	42.07	45.38	48.37	51.13
70.0	19.22	21.85	25.41	29.62	33.64	37.51	41.09	44.46	47.51	50.31
72.5	16.73	19.92	24.07	28.37	32.45	36.38	40.03	43.44	46.55	49.39
75.0	14.46	18.32	22.72	27.07	31.20	35.18	38.86	42.33	45.47	48.34
77.5	12.49	16.85	21.29	25.70	29.88	33.91	37.64	41.10	44.28	47.22
80.0	10.88	15.37	19.83	24.27	28.50	32.58	36.31	39.83	43.04	45.97
82.5	9.387	13.86	18.32	22.78	27.03	31.12	34.90	38.45	41.69	44.63
85.0	7.923	12.33	16.76	21.22	25.51	29.63	33.40	37.00	40.23	43.20
87.5	6.501	10.79	15.18	19.63	23.89	28.03	31.82	35.44	38.70	41.68
90.0	5.180	9.281	13.58	17.98	22.24	26.37	30.17	33.79	37.05	40.04
92.5	3.980	7.817	11.96	16.30	20.51	24.63	28.43	32.06	35.29	38.28
95.0	2.966	6.419	10.39	14.60	18.76	22.85	26.63	30.23	33.47	36.47
97.5	2.200	5.168	8.842	12.90	16.97	21.01	24.75	28.34	31.56	34.57
100.0	1.789	4.094	7.381	11.23	15.16	19.12	22.82	26.37	29.57	32.53
102.5	1.635	3.321	6.086	9.622	13.37	17.21	20.84	24.33	27.48	30.40
105.0	1.467	2.878	5.030	8.133	11.62	15.30	18.81	22.22	25.31	28.22
107.5	1.295	2.669	4.307	6.808	9.962	13.39	16.75	20.08	23.10	25.95
110.0	1.110	2.453	3.898	5.792	8.454	11.58	14.75	17.94	20.86	23.66
112.5	0.9153	2.209	3.619	5.123	7.204	9.924	12.82	15.82	18.62	21.31
115.0	0.7165	1.959	3.341	4.761	6.351	8.497	11.03	13.78	16.40	18.98
117.5	0.5394	1.697	3.053	4.422	5.800	7.410	9.464	11.88	14.28	16.68
120.0	0.3941	1.453	2.731	4.078	5.412	6.688	8.254	10.22	12.30	14.49
122.5	0.3169	1.190	2.414	3.733	5.017	6.258	7.422	8.930	10.60	12.47
125.0	0.3124	0.9271	2.092	3.354	4.605	5.821	6.938	8.012	9.315	10.76
127.5	0.3438	0.6968	1.772	2.981	4.185	5.358	6.441	7.470	8.414	9.563
130.0	0.3667	0.4974	1.453	2.584	3.744	4.879	5.927	6.918	7.816	8.655
132.5	0.3713	0.3668	1.110	2.195	3.293	4.375	5.385	6.355	7.212	8.021
135.0	0.3532	0.3621	0.7943	1.786	2.838	3.874	4.842	5.771	6.580	7.363
137.5	0.3575	0.3667	0.5346	1.403	2.374	3.369	4.284	5.167	5.959	6.698
140.0	0.3531	0.3621	0.3896	1.022	1.911	2.819	3.696	4.536	5.289	6.003
142.5	0.3532	0.3710	0.3801	0.6607	1.449	2.283	3.107	3.904	4.603	5.276
145.0	0.3621	0.3621	0.3668	0.4067	0.9888	1.745	2.503	3.247	3.908	4.540
147.5	0.3531	0.3576	0.3667	0.3667	0.5937	1.226	1.913	2.596	3.206	3.809
150.0	0.3575	0.3531	0.3576	0.3621	0.3808	0.7542	1.342	1.945	2.500	3.055
152.5	0.3532	0.3529	0.3531	0.3666	0.3667	0.4022	0.7852	1.319	1.800	2.310
155.0	0.3531	0.3531	0.3576	0.3576	0.3621	0.3622	0.4346	0.7574	1.142	1.572
157.5	0.3576	0.3620	0.3531	0.3621	0.3622	0.3576	0.3758	0.3843	0.5850	0.8989
160.0	0.3575	0.3487	0.3486	0.3577	0.3621	0.3621	0.3668	0.3667	0.3803	0.4107
162.5	0.3576	0.3575	0.3621	0.3621	0.3621	0.3576	0.3667	0.3621	0.3802	0.3709
165.0	0.3531	0.3621	0.3576	0.3619	0.3667	0.3576	0.3621	0.3621	0.3667	0.3621
167.5	0.3665	0.3576	0.3621	0.3667	0.3531	0.3577	0.3667	0.3711	0.3669	0.3622
170.0	0.3621	0.3621	0.3621	0.3621	0.3576	0.3621	0.3577	0.3621	0.3621	0.3667
172.5	0.3667	0.3576	0.3622	0.3576	0.3576	0.3576	0.3578	0.3576	0.3621	0.3621
175.0	0.3667	0.3576	0.3667	0.3621	0.3621	0.3621	0.3533	0.3621	0.3621	0.3577
177.5	0.3667	0.3621	0.3621	0.3667	0.3621	0.3621	0.3667	0.3621	0.3712	0.3667
180.0	0.3712	0.3667	0.3712	0.3667	0.3712	0.3576	0.3712	0.3667	0.3712	0.3712

C Range: 0 - 360DEG
 C Interval: 5.0DEG
 Test Speed: HIGH
 Temperature: 25DEG
 Operators: yechihong
 Test Date: 2019-05-22

γ Range: 0 - 180DEG
 γ Interval: 0.5DEG
 Test System: EVERFINE GO-2000A_V1 SYSTEM V2.0.272
 Humidity: 70%
 Test Distance: 8.425m [K=1.0000]
 Remarks:

Photometric Data Table [cd]

G/C	150.0	155.0	160.0	165.0	170.0	175.0	180.0	185.0	190.0	195.0
0.0	65.90	65.90	65.89	65.90	65.92	65.93	66.37	66.30	66.28	66.22
2.5	65.87	65.86	65.85	65.88	65.87	65.88	66.32	66.29	66.23	66.19
5.0	65.86	65.87	65.89	65.91	65.89	65.92	66.36	66.33	66.26	66.23
7.5	65.87	65.88	65.91	65.96	65.97	65.98	66.43	66.40	66.33	66.26
10.0	65.79	65.83	65.90	65.95	65.98	65.98	66.45	66.42	66.35	66.27
12.5	65.64	65.71	65.81	65.89	65.93	65.97	66.44	66.40	66.34	66.23
15.0	65.41	65.53	65.65	65.75	65.81	65.87	66.34	66.28	66.22	66.10
17.5	65.07	65.27	65.41	65.54	65.57	65.65	66.14	66.08	65.99	65.83
20.0	64.62	64.87	65.02	65.17	65.26	65.33	65.82	65.75	65.68	65.48
22.5	64.08	64.35	64.52	64.69	64.79	64.87	65.38	65.29	65.21	65.01
25.0	63.40	63.71	63.91	64.09	64.20	64.28	64.80	64.72	64.61	64.41
27.5	62.60	62.95	63.18	63.39	63.53	63.62	64.15	64.05	63.94	63.71
30.0	61.68	62.07	62.34	62.61	62.76	62.84	63.39	63.29	63.18	62.91
32.5	60.68	61.12	61.44	61.75	61.93	62.04	62.60	62.48	62.36	62.05
35.0	59.60	60.13	60.50	60.89	61.11	61.23	61.81	61.69	61.53	61.18
37.5	58.54	59.14	59.62	60.07	60.35	60.52	61.13	60.97	60.78	60.36
40.0	57.50	58.24	58.85	59.43	59.81	60.02	60.65	60.48	60.20	59.70
42.5	56.57	57.52	58.34	59.06	59.58	59.90	60.58	60.37	60.00	59.37
45.0	55.91	57.13	58.24	59.16	59.86	60.24	61.11	60.74	60.25	59.43
47.5	55.64	57.21	58.56	59.60	60.30	60.74	61.55	61.26	60.71	59.87
50.0	55.73	57.42	58.83	59.90	60.64	61.12	61.88	61.75	61.05	60.18
52.5	55.78	57.54	58.98	60.09	60.87	61.36	62.11	61.95	61.25	60.36
55.0	55.69	57.50	59.02	60.15	60.97	61.45	62.39	61.95	61.33	60.41
57.5	55.48	57.34	58.91	60.09	60.91	61.43	62.36	61.89	61.31	60.33
60.0	55.15	57.10	58.67	59.90	60.78	61.28	62.02	61.77	61.21	60.12
62.5	54.71	56.71	58.32	59.60	60.50	61.00	61.73	61.44	60.84	59.80
65.0	54.17	56.19	57.84	59.15	60.09	60.57	61.31	61.00	60.41	59.34
67.5	53.51	55.58	57.26	58.61	59.54	60.05	60.77	60.45	59.86	58.76
70.0	52.73	54.84	56.57	57.92	58.89	59.42	60.09	59.80	59.18	58.05
72.5	51.84	53.97	55.73	57.14	58.08	58.65	59.31	59.00	58.37	57.23
75.0	50.85	53.03	54.80	56.22	57.16	57.74	58.39	58.10	57.45	56.29
77.5	49.73	51.95	53.74	55.19	56.12	56.71	57.36	57.06	56.40	55.25
80.0	48.52	50.77	52.55	54.05	54.98	55.59	56.21	55.91	55.25	54.08
82.5	47.21	49.47	51.27	52.76	53.73	54.35	54.94	54.63	53.98	52.78
85.0	45.79	48.07	49.88	51.37	52.36	53.00	53.57	53.27	52.55	51.29
87.5	44.25	46.54	48.37	49.85	50.85	51.52	52.07	51.66	51.03	49.82
90.0	42.62	44.91	46.73	48.24	49.24	49.84	50.35	50.09	49.41	48.17
92.5	40.87	43.17	44.99	46.46	47.37	48.06	48.57	48.26	47.62	46.40
95.0	39.04	41.34	43.09	44.60	45.56	46.18	46.66	46.34	45.70	44.51
97.5	37.11	39.36	41.14	42.61	43.56	44.18	44.65	44.33	43.69	42.48
100.0	35.04	37.29	39.04	40.52	41.47	42.10	42.55	42.22	41.58	40.37
102.5	32.89	35.13	36.88	38.36	39.29	39.91	40.35	40.01	39.38	38.17
105.0	30.67	32.89	34.63	36.09	37.01	37.65	38.03	37.69	37.07	35.88
107.5	28.39	30.57	32.28	33.73	34.63	35.25	35.61	35.28	34.68	33.50
110.0	26.03	28.18	29.85	31.27	32.18	32.79	33.12	32.80	32.19	31.04
112.5	23.62	25.72	27.35	28.75	29.61	30.24	30.53	30.21	29.64	28.51
115.0	21.19	23.24	24.81	26.17	27.03	27.63	27.91	27.57	27.02	25.91
117.5	18.77	20.72	22.23	23.55	24.37	24.96	25.21	24.89	24.36	23.29
120.0	16.41	18.23	19.67	20.93	21.72	22.27	22.51	22.21	21.69	20.67
122.5	14.18	15.85	17.18	18.36	19.09	19.61	19.84	19.55	19.07	18.12
125.0	12.20	13.65	14.83	15.91	16.57	17.06	17.24	16.99	16.56	15.68
127.5	10.59	11.76	12.75	13.67	14.24	14.69	14.83	14.60	14.24	13.48
130.0	9.401	10.38	11.09	11.80	12.25	12.61	12.72	12.53	12.25	11.67
132.5	8.707	9.326	9.832	10.42	10.80	11.06	11.14	11.00	10.78	10.31
135.0	8.014	8.621	9.088	9.472	9.712	9.883	9.917	9.819	9.664	9.373
137.5	7.311	7.898	8.333	8.709	8.937	9.102	9.109	9.021	8.864	8.575
140.0	6.578	7.132	7.549	7.911	8.124	8.286	8.287	8.200	8.061	7.767
142.5	5.849	6.355	6.752	7.084	7.298	7.447	7.451	7.358	7.219	6.943
145.0	5.062	5.550	5.932	6.252	6.440	6.588	6.591	6.499	6.377	6.132
147.5	4.288	4.746	5.091	5.407	5.579	5.732	5.712	5.636	5.523	5.265
150.0	3.496	3.931	4.257	4.542	4.702	4.852	4.822	4.749	4.636	4.401
152.5	2.714	3.107	3.398	3.680	3.816	3.946	3.928	3.844	3.753	3.533
155.0	1.924	2.291	2.542	2.789	2.930	3.036	3.013	2.951	2.855	2.663
157.5	1.187	1.488	1.716	1.928	2.035	2.148	2.129	2.050	1.984	1.806
160.0	0.5618	0.7688	0.9265	1.114	1.194	1.287	1.263	1.209	1.149	0.9875
162.5	0.3760	0.3757	0.4184	0.4792	0.5196	0.5724	0.5475	0.5164	0.4842	0.4171
165.0	0.3667	0.3667	0.3803	0.3667	0.3758	0.3712	0.3667	0.3621	0.3576	0.3576
167.5	0.3667	0.3667	0.3803	0.3667	0.3757	0.3712	0.3667	0.3621	0.3576	0.3620
170.0	0.3667	0.3713	0.3758	0.3667	0.3712	0.3712	0.3756	0.3621	0.3576	0.3576
172.5	0.3667	0.3667	0.3712	0.3712	0.3667	0.3712	0.3712	0.3621	0.3712	0.3576
175.0	0.3622	0.3667	0.3712	0.3712	0.3667	0.3712	0.3757	0.3621	0.3757	0.3666
177.5	0.3711	0.3667	0.3802	0.3712	0.3666	0.3757	0.3757	0.3667	0.3757	0.3666
180.0	0.3757	0.3712	0.3757	0.3757	0.3712	0.3757	0.3803	0.3712	0.3757	0.3667

C Range: 0 - 360DEG
 C Interval: 5.0DEG
 Test Speed: HIGH
 Temperature: 25DEG
 Operators: yechihong
 Test Date: 2019-05-22

γ Range: 0 - 180DEG
 γ Interval: 0.5DEG
 Test System: EVERFINE GO-2000A_V1 SYSTEM V2.0.272
 Humidity: 70%
 Test Distance: 8.425m [K=1.0000]
 Remarks:

Photometric Data Table [cd]

G/C	200.0	205.0	210.0	215.0	220.0	225.0	230.0	235.0	240.0	245.0
0.0	66.17	66.14	66.13	66.09	66.05	66.02	66.02	66.00	65.96	65.95
2.5	66.14	66.12	66.09	66.06	66.00	65.98	65.95	65.93	65.90	65.87
5.0	66.16	66.12	66.08	66.04	65.94	65.89	65.81	65.79	65.74	65.68
7.5	66.19	66.12	66.06	65.97	65.85	65.78	65.67	65.58	65.51	65.43
10.0	66.17	66.09	65.98	65.86	65.72	65.57	65.44	65.29	65.17	65.05
12.5	66.10	65.99	65.84	65.66	65.50	65.29	65.11	64.90	64.74	64.54
15.0	65.93	65.81	65.62	65.39	65.18	64.92	64.68	64.41	64.17	63.93
17.5	65.68	65.51	65.30	65.02	64.76	64.44	64.13	63.81	63.50	63.20
20.0	65.31	65.11	64.86	64.54	64.24	63.85	63.51	63.09	62.72	62.35
22.5	64.82	64.57	64.30	63.93	63.60	63.15	62.76	62.29	61.83	61.39
25.0	64.21	63.92	63.62	63.19	62.81	62.29	61.86	61.33	60.81	60.28
27.5	63.48	63.14	62.80	62.34	61.90	61.34	60.84	60.25	59.69	59.09
30.0	62.65	62.29	61.87	61.37	60.89	60.26	59.71	59.05	58.44	57.76
32.5	61.74	61.32	60.86	60.28	59.74	59.06	58.45	57.73	57.06	56.31
35.0	60.81	60.31	59.77	59.14	58.51	57.75	57.06	56.28	55.57	54.75
37.5	59.90	59.31	58.67	57.93	57.19	56.37	55.58	54.72	53.95	53.06
40.0	59.11	58.36	57.60	56.71	55.84	54.91	54.04	53.09	52.23	51.29
42.5	58.58	57.64	56.65	55.57	54.53	53.44	52.43	51.36	50.42	49.38
45.0	58.43	57.23	55.95	54.60	53.30	51.96	50.80	49.60	48.53	47.42
47.5	58.69	57.26	55.61	53.89	52.23	50.62	49.19	47.80	46.57	45.34
50.0	58.97	57.45	55.66	53.58	51.48	49.44	47.66	46.00	44.57	43.21
52.5	59.11	57.54	55.67	53.52	51.09	48.57	46.32	44.29	42.60	41.05
55.0	59.11	57.48	55.57	53.33	50.84	48.05	45.25	42.75	40.70	38.88
57.5	59.00	57.33	55.36	53.05	50.48	47.60	44.51	41.44	38.90	36.74
60.0	58.76	57.03	55.01	52.64	50.01	47.05	43.90	40.47	37.32	34.69
62.5	58.40	56.65	54.57	52.11	49.45	46.42	43.18	39.67	36.02	32.83
65.0	57.91	56.11	54.01	51.51	48.76	45.68	42.38	38.78	35.03	31.20
67.5	57.30	55.47	53.32	50.78	47.99	44.83	41.47	37.81	33.99	29.90
70.0	56.58	54.72	52.53	49.95	47.10	43.89	40.47	36.75	32.85	28.71
72.5	55.74	53.84	51.63	48.99	46.12	42.87	39.38	35.59	31.65	27.44
75.0	54.79	52.88	50.63	47.96	45.03	41.73	38.20	34.37	30.37	26.10
77.5	53.74	51.78	49.50	46.80	43.84	40.49	36.97	33.08	29.05	24.73
80.0	52.56	50.57	48.24	45.52	42.57	39.20	35.64	31.71	27.64	23.26
82.5	51.20	49.21	46.92	44.18	41.21	37.81	34.20	30.25	26.14	21.75
85.0	49.81	47.81	45.48	42.74	39.73	36.32	32.69	28.71	24.59	20.20
87.5	48.29	46.26	43.93	41.18	38.17	34.75	31.08	27.10	22.98	18.58
90.0	46.64	44.60	42.28	39.53	36.52	33.08	29.43	25.44	21.32	16.94
92.5	44.86	42.83	40.51	37.74	34.74	31.30	27.66	23.68	19.57	15.26
95.0	43.02	40.97	38.67	35.89	32.90	29.46	25.84	21.87	17.82	13.57
97.5	41.00	39.01	36.74	33.96	30.97	27.55	23.97	20.04	16.03	11.89
100.0	38.91	36.91	34.67	31.94	28.97	25.57	22.04	18.16	14.26	10.27
102.5	36.72	34.74	32.51	29.79	26.87	23.55	20.05	16.27	12.49	8.720
105.0	34.46	32.49	30.28	27.58	24.71	21.43	18.02	14.37	10.79	7.312
107.5	32.10	30.15	27.97	25.32	22.51	19.31	16.02	12.52	9.202	6.131
110.0	29.65	27.74	25.62	23.02	20.29	17.19	14.05	10.79	7.793	5.274
112.5	27.14	25.28	23.22	20.70	18.06	15.12	12.16	9.226	6.677	4.695
115.0	24.59	22.79	20.81	18.38	15.89	13.12	10.46	7.914	5.898	4.392
117.5	22.01	20.29	18.41	16.12	13.80	11.30	8.998	7.005	5.454	4.061
120.0	19.47	17.83	16.07	13.96	11.90	9.747	7.951	6.370	5.087	3.736
122.5	16.99	15.49	13.90	12.04	10.29	8.616	7.159	5.964	4.702	3.391
125.0	14.68	13.34	11.98	10.45	9.117	7.765	6.690	5.534	4.305	3.035
127.5	12.61	11.52	10.45	9.270	8.242	7.248	6.210	5.071	3.892	2.664
130.0	11.03	10.23	9.321	8.521	7.692	6.723	5.714	4.596	3.463	2.278
132.5	9.910	9.421	8.790	8.028	7.176	6.219	5.213	4.124	3.017	1.888
135.0	9.086	8.611	8.029	7.285	6.498	5.575	4.646	3.623	2.582	1.519
137.5	8.231	7.776	7.207	6.513	5.784	4.934	4.042	3.093	2.127	1.125
140.0	7.439	6.979	6.456	5.794	5.094	4.286	3.452	2.533	1.627	0.7385
142.5	6.629	6.199	5.690	5.060	4.415	3.645	2.852	2.002	1.172	0.4448
145.0	5.818	5.388	4.933	4.348	3.734	3.013	2.280	1.497	0.7556	0.3215
147.5	4.988	4.594	4.147	3.597	3.034	2.358	1.688	0.9919	0.4154	0.3124
150.0	4.135	3.768	3.373	2.859	2.338	1.728	1.139	0.5627	0.3214	0.3078
152.5	3.297	2.947	2.587	2.112	1.651	1.117	0.6363	0.3399	0.3259	0.3078
155.0	2.448	2.134	1.813	1.415	1.016	0.5906	0.3395	0.3259	0.3348	0.3078
157.5	1.616	1.355	1.090	0.7482	0.4882	0.3486	0.3350	0.3305	0.3305	0.3124
160.0	0.8622	0.6524	0.4961	0.3588	0.3486	0.3440	0.3395	0.3350	0.3350	0.3258
162.5	0.3576	0.3577	0.3576	0.3442	0.3488	0.3529	0.3396	0.3485	0.3530	0.3395
165.0	0.3531	0.3532	0.3531	0.3395	0.3531	0.3485	0.3486	0.3486	0.3487	0.3486
167.5	0.3531	0.3621	0.3621	0.3485	0.3531	0.3530	0.3530	0.3486	0.3487	0.3486
170.0	0.3620	0.3667	0.3576	0.3532	0.3576	0.3486	0.3532	0.3620	0.3575	0.3532
172.5	0.3621	0.3576	0.3666	0.3576	0.3621	0.3622	0.3576	0.3576	0.3667	0.3576
175.0	0.3621	0.3621	0.3667	0.3531	0.3667	0.3621	0.3576	0.3576	0.3577	0.3576
177.5	0.3621	0.3621	0.3757	0.3577	0.3757	0.3621	0.3621	0.3621	0.3667	0.3622
180.0	0.3667	0.3667	0.3712	0.3621	0.3667	0.3667	0.3621	0.3667	0.3667	0.3621

C Range: 0 - 360DEG
 C Interval: 5.0DEG
 Test Speed: HIGH
 Temperature: 25DEG
 Operators: yechihong
 Test Date: 2019-05-22

γ Range: 0 - 180DEG
 γ Interval: 0.5DEG
 Test System: EVERFINE GO-2000A_V1 SYSTEM V2.0.272
 Humidity: 70%
 Test Distance: 8.425m [K=1.0000]
 Remarks:

Photometric Data Table [cd]

G/C	250.0	255.0	260.0	265.0	270.0	275.0	280.0	285.0	290.0	295.0
0.0	65.92	65.92	65.92	65.90	65.90	65.91	65.89	65.88	65.86	65.90
2.5	65.87	65.84	65.86	65.83	65.85	65.84	65.84	65.81	65.82	65.83
5.0	65.66	65.63	65.65	65.63	65.63	65.63	65.63	65.58	65.65	65.66
7.5	65.37	65.30	65.32	65.27	65.28	65.28	65.29	65.27	65.33	65.40
10.0	64.95	64.84	64.84	64.78	64.78	64.79	64.82	64.83	64.92	65.02
12.5	64.40	64.29	64.23	64.14	64.16	64.16	64.19	64.27	64.38	64.54
15.0	63.76	63.57	63.48	63.37	63.39	63.39	63.45	63.57	63.76	63.96
17.5	62.98	62.74	62.57	62.47	62.49	62.47	62.59	62.76	63.01	63.28
20.0	62.07	61.75	61.57	61.42	61.47	61.44	61.58	61.80	62.12	62.46
22.5	61.03	60.67	60.43	60.26	60.30	60.28	60.44	60.75	61.14	61.56
25.0	59.89	59.46	59.16	58.95	59.08	58.97	59.20	59.56	60.04	60.53
27.5	58.62	58.11	57.76	57.51	57.59	57.54	57.83	58.25	58.80	59.38
30.0	57.23	56.66	56.25	55.95	55.98	55.98	56.33	56.83	57.45	58.13
32.5	55.71	55.08	54.63	54.26	54.29	54.31	54.73	55.27	55.99	56.74
35.0	54.07	53.37	52.87	52.46	52.50	52.54	53.00	53.60	54.39	55.19
37.5	52.33	51.54	51.00	50.52	50.56	50.60	51.15	51.82	52.71	53.58
40.0	50.48	49.63	49.01	48.49	48.51	48.59	49.19	49.93	50.90	51.85
42.5	48.52	47.59	46.91	46.34	46.37	46.47	47.12	47.94	48.99	49.99
45.0	46.45	45.46	44.72	44.09	44.17	44.21	44.95	45.85	46.98	48.06
47.5	44.31	43.22	42.40	41.71	41.70	41.85	42.66	43.65	44.87	46.05
50.0	42.07	40.89	40.00	39.26	39.18	39.41	40.28	41.35	42.66	43.96
52.5	39.74	38.49	37.51	36.71	36.59	36.87	37.82	38.98	40.39	41.82
55.0	37.41	36.02	34.95	34.07	33.92	34.25	35.28	36.53	38.09	39.70
57.5	35.05	33.50	32.32	31.36	31.19	31.54	32.69	34.04	35.76	37.60
60.0	32.70	30.94	29.62	28.57	28.34	28.76	30.01	31.51	33.43	35.59
62.5	30.41	28.38	26.91	25.72	25.47	25.93	27.32	28.99	31.19	33.75
65.0	28.23	25.86	24.15	22.86	22.55	23.09	24.61	26.52	29.06	32.17
67.5	26.26	23.41	21.43	19.98	19.62	20.21	21.92	24.14	27.15	30.90
70.0	24.54	21.11	18.76	17.11	16.68	17.39	19.33	21.91	25.54	29.76
72.5	23.14	19.03	16.17	14.30	13.79	14.61	16.82	19.93	24.19	28.55
75.0	21.75	17.24	13.80	11.61	10.99	11.96	14.55	18.30	22.87	27.27
77.5	20.32	15.75	11.67	9.060	8.332	9.480	12.57	16.90	21.51	25.97
80.0	18.85	14.26	9.878	6.743	5.877	7.236	10.92	15.44	20.10	24.60
82.5	17.31	12.73	8.387	4.761	3.689	5.356	9.479	13.98	18.63	23.16
85.0	15.76	11.20	6.942	3.234	1.902	3.911	8.064	12.49	17.14	21.67
87.5	14.18	9.692	5.573	2.129	0.7155	2.781	6.670	11.01	15.60	20.12
90.0	12.59	8.212	4.299	1.288	0.1855	1.817	5.382	9.558	14.07	18.55
92.5	10.99	6.783	3.192	0.7397	0.1765	1.107	4.179	8.103	12.50	16.89
95.0	9.434	5.484	2.306	0.5251	0.1765	0.7258	3.159	6.743	10.95	15.25
97.5	7.955	4.317	1.711	0.4484	0.1765	0.6385	2.359	5.505	9.433	13.59
100.0	6.568	3.395	1.416	0.3667	0.1765	0.5569	1.755	4.409	7.987	11.93
102.5	5.386	2.818	1.272	0.2858	0.1811	0.4708	1.430	3.460	6.651	10.34
105.0	4.440	2.467	1.113	0.2399	0.1856	0.3804	1.222	2.755	5.472	8.812
107.5	3.829	2.259	0.9587	0.2310	0.1947	0.3035	1.081	2.296	4.494	7.423
110.0	3.507	2.052	0.7871	0.2263	0.2037	0.2491	0.9866	1.948	3.806	6.198
112.5	3.240	1.829	0.6105	0.2263	0.2082	0.2490	0.9325	1.693	3.252	5.248
115.0	2.969	1.607	0.4345	0.2263	0.2264	0.2490	0.8417	1.571	2.756	4.560
117.5	2.688	1.368	0.2942	0.2353	0.2354	0.2490	0.7016	1.517	2.448	4.027
120.0	2.397	1.119	0.2853	0.2309	0.2535	0.2490	0.5291	1.436	2.258	3.570
122.5	2.095	0.8750	0.2898	0.2354	0.2626	0.2490	0.3841	1.336	2.114	3.202
125.0	1.777	0.6340	0.2988	0.2443	0.2761	0.2668	0.3169	1.155	1.955	2.893
127.5	1.471	0.4402	0.2988	0.2535	0.2942	0.2761	0.3170	0.9424	1.797	2.654
130.0	1.159	0.3397	0.2988	0.2716	0.2942	0.2897	0.3305	0.7342	1.657	2.441
132.5	0.8491	0.3217	0.2988	0.2807	0.2988	0.2897	0.3078	0.4852	1.361	2.098
135.0	0.5518	0.3214	0.3033	0.2807	0.3033	0.2897	0.3078	0.3491	1.061	1.784
137.5	0.3576	0.3169	0.3033	0.2807	0.3078	0.2897	0.3078	0.3169	0.7686	1.503
140.0	0.3078	0.3033	0.3033	0.2851	0.3078	0.2897	0.3078	0.3124	0.5106	1.188
142.5	0.3078	0.3033	0.3124	0.2852	0.3124	0.2897	0.3080	0.3124	0.3345	0.8610
145.0	0.3078	0.3033	0.3124	0.2898	0.3124	0.2897	0.3169	0.3124	0.3124	0.5764
147.5	0.3124	0.3033	0.3215	0.2942	0.3213	0.2942	0.3214	0.3124	0.3214	0.3767
150.0	0.3169	0.3033	0.3214	0.3032	0.3169	0.2988	0.3259	0.3124	0.3304	0.3214
152.5	0.3170	0.3033	0.3305	0.3079	0.3305	0.3123	0.3351	0.3124	0.3305	0.3169
155.0	0.3305	0.3167	0.3350	0.3214	0.3396	0.3349	0.3441	0.3214	0.3350	0.3214
157.5	0.3350	0.3349	0.3440	0.3351	0.3530	0.3571	0.3576	0.3395	0.3486	0.3485
160.0	0.3395	0.3440	0.3531	0.3395	0.3577	0.3575	0.3621	0.3574	0.3486	0.3577
162.5	0.3486	0.3531	0.3532	0.3576	0.3667	0.3623	0.3621	0.3620	0.3667	0.3622
165.0	0.3486	0.3531	0.3621	0.3623	0.3664	0.3621	0.3621	0.3621	0.3667	0.3622
167.5	0.3531	0.3620	0.3620	0.3667	0.3667	0.3621	0.3667	0.3667	0.3667	0.3622
170.0	0.3575	0.3531	0.3621	0.3621	0.3667	0.3621	0.3667	0.3667	0.3667	0.3667
172.5	0.3621	0.3577	0.3621	0.3668	0.3667	0.3664	0.3667	0.3667	0.3667	0.3713
175.0	0.3621	0.3621	0.3667	0.3667	0.3756	0.3667	0.3712	0.3667	0.3712	0.3757
177.5	0.3621	0.3667	0.3667	0.3667	0.3712	0.3757	0.3712	0.3757	0.3712	0.3757
180.0	0.3712	0.3667	0.3667	0.3712	0.3712	0.3757	0.3712	0.3712	0.3667	0.3757

C Range: 0 - 360DEG
 C Interval: 5.0DEG
 Test Speed: HIGH
 Temperature: 25DEG
 Operators: yechihong
 Test Date: 2019-05-22

γ Range: 0 - 180DEG
 γ Interval: 0.5DEG
 Test System: EVERFINE GO-2000A_V1 SYSTEM V2.0.272
 Humidity: 70%
 Test Distance: 8.425m [K=1.0000]
 Remarks:

Photometric Data Table [cd]

G/C	300.0	305.0	310.0	315.0	320.0	325.0	330.0	335.0	340.0	345.0
0.0	65.88	65.90	65.94	65.95	65.91	65.92	65.90	65.90	65.89	65.90
2.5	65.85	65.84	65.89	65.91	65.90	65.89	65.90	65.91	65.92	65.93
5.0	65.68	65.71	65.79	65.82	65.84	65.90	65.94	65.95	65.98	65.99
7.5	65.46	65.52	65.61	65.72	65.79	65.89	65.98	66.01	66.08	66.11
10.0	65.13	65.26	65.41	65.57	65.70	65.85	65.97	66.06	66.17	66.23
12.5	64.74	64.90	65.13	65.36	65.53	65.75	65.90	66.07	66.17	66.32
15.0	64.22	64.46	64.77	65.04	65.31	65.54	65.76	65.97	66.15	66.29
17.5	63.63	63.94	64.28	64.63	64.96	65.26	65.53	65.80	65.99	66.16
20.0	62.91	63.29	63.72	64.12	64.53	64.88	65.20	65.51	65.75	65.93
22.5	62.07	62.53	63.04	63.50	63.96	64.38	64.76	65.07	65.36	65.60
25.0	61.11	61.64	62.23	62.75	63.30	63.75	64.19	64.54	64.88	65.13
27.5	60.03	60.65	61.30	61.87	62.49	62.98	63.48	63.89	64.26	64.55
30.0	58.84	59.53	60.25	60.89	61.57	62.11	62.66	63.10	63.57	63.86
32.5	57.50	58.26	59.08	59.76	60.52	61.11	61.75	62.23	62.75	63.10
35.0	56.08	56.88	57.78	58.57	59.36	60.05	60.76	61.32	61.88	62.29
37.5	54.51	55.41	56.38	57.23	58.12	58.93	59.71	60.37	61.04	61.54
40.0	52.86	53.82	54.87	55.85	56.85	57.77	58.69	59.48	60.23	60.84
42.5	51.09	52.16	53.31	54.41	55.56	56.64	57.73	58.71	59.65	60.38
45.0	49.25	50.44	51.71	52.99	54.33	55.63	56.97	58.21	59.35	60.30
47.5	47.36	48.67	50.15	51.64	53.24	54.88	56.53	58.05	59.50	60.66
50.0	45.41	46.91	48.64	50.43	52.41	54.44	56.47	58.33	59.81	61.05
52.5	43.47	45.24	47.29	49.49	51.91	54.36	56.58	58.47	60.04	61.31
55.0	41.59	43.69	46.18	48.89	51.72	54.27	56.52	58.50	60.12	61.42
57.5	39.81	42.39	45.41	48.52	51.44	54.06	56.36	58.40	60.08	61.42
60.0	38.24	41.38	44.83	48.05	51.03	53.72	56.11	58.18	59.92	61.25
62.5	36.96	40.62	44.18	47.47	50.55	53.27	55.72	57.84	59.62	60.99
65.0	36.00	39.79	43.43	46.79	49.93	52.73	55.23	57.36	59.19	60.57
67.5	35.01	38.90	42.60	46.02	49.19	52.05	54.62	56.79	58.65	60.05
70.0	33.95	37.89	41.67	45.13	48.38	51.27	53.88	56.09	57.97	59.41
72.5	32.79	36.81	40.63	44.16	47.46	50.37	53.04	55.27	57.17	58.63
75.0	31.57	35.66	39.52	43.08	46.43	49.41	52.07	54.35	56.26	57.74
77.5	30.33	34.43	38.34	41.92	45.29	48.31	51.01	53.29	55.21	56.71
80.0	28.98	33.11	37.07	40.68	44.07	47.09	49.84	52.14	54.07	55.61
82.5	27.57	31.73	35.72	39.33	42.78	45.80	48.55	50.85	52.85	54.36
85.0	26.09	30.27	34.29	37.92	41.36	44.41	47.17	49.47	51.43	52.99
87.5	24.55	28.74	32.77	36.42	39.88	42.93	45.69	48.00	50.03	51.46
90.0	22.97	27.15	31.17	34.85	38.30	41.36	44.11	46.42	48.43	49.90
92.5	21.27	25.44	29.47	33.14	36.59	39.62	42.40	44.68	46.68	48.14
95.0	19.56	23.69	27.71	31.37	34.80	37.82	40.59	42.86	44.85	46.30
97.5	17.82	21.89	25.87	29.50	32.92	35.93	38.68	40.97	42.91	44.33
100.0	16.05	20.05	23.98	27.56	30.97	33.96	36.67	38.90	40.86	42.27
102.5	14.28	18.18	22.03	25.55	28.93	31.86	34.56	36.79	38.71	40.12
105.0	12.53	16.26	20.00	23.47	26.79	29.68	32.36	34.57	36.46	37.86
107.5	10.82	14.37	17.98	21.34	24.59	27.43	30.06	32.25	34.14	35.50
110.0	9.253	12.53	15.97	19.20	22.36	25.13	27.71	29.84	31.71	33.06
112.5	7.774	10.77	13.99	17.06	20.11	22.80	25.31	27.37	29.22	30.51
115.0	6.473	9.018	12.02	14.94	17.86	20.43	22.87	24.86	26.65	27.92
117.5	5.634	7.494	10.06	12.80	15.61	18.09	20.42	22.32	24.04	25.28
120.0	5.180	6.512	8.377	10.72	13.35	15.76	18.00	19.81	21.45	22.61
122.5	4.691	5.985	7.248	8.989	11.19	13.46	15.64	17.34	18.88	19.97
125.0	4.209	5.555	6.594	7.792	9.405	11.27	13.36	14.98	16.37	17.39
127.5	3.783	5.079	6.143	7.082	8.207	9.487	11.23	12.84	14.06	14.95
130.0	3.412	4.627	5.681	6.562	7.431	8.311	9.501	10.96	12.05	12.79
132.5	3.001	4.089	5.181	6.012	6.796	7.586	8.343	9.472	10.51	11.06
135.0	2.616	3.605	4.680	5.494	6.217	6.909	7.618	8.408	9.445	9.876
137.5	2.176	3.065	4.139	4.978	5.622	6.220	6.860	7.459	8.497	9.038
140.0	1.774	2.537	3.511	4.415	5.078	5.573	6.122	6.647	7.473	8.188
142.5	1.452	2.029	2.876	3.730	4.524	4.975	5.411	5.884	6.427	7.308
145.0	1.126	1.604	2.296	3.047	3.836	4.392	4.764	5.099	5.492	6.333
147.5	0.7922	1.238	1.723	2.395	3.105	3.742	4.138	4.384	4.689	5.275
150.0	0.4933	0.8793	1.284	1.776	2.407	2.987	3.500	3.712	3.963	4.219
152.5	0.3305	0.5670	0.9086	1.259	1.762	2.253	2.762	3.057	3.232	3.373
155.0	0.3485	0.3629	0.5639	0.8353	1.175	1.598	2.020	2.350	2.527	2.637
157.5	0.3531	0.3439	0.3617	0.5086	0.7266	0.9806	1.332	1.639	1.844	1.910
160.0	0.3531	0.3484	0.3530	0.3532	0.3935	0.5393	0.7598	0.9533	1.153	1.227
162.5	0.3576	0.3487	0.3486	0.3531	0.3576	0.3578	0.3710	0.4620	0.5641	0.6205
165.0	0.3576	0.3621	0.3619	0.3619	0.3620	0.3621	0.3530	0.3621	0.3576	0.3622
167.5	0.3621	0.3621	0.3576	0.3577	0.3664	0.3576	0.3532	0.3712	0.3576	0.3621
170.0	0.3622	0.3667	0.3667	0.3623	0.3623	0.3621	0.3667	0.3711	0.3667	0.3577
172.5	0.3712	0.3621	0.3623	0.3667	0.3667	0.3621	0.3712	0.3712	0.3757	0.3667
175.0	0.3757	0.3621	0.3621	0.3667	0.3712	0.3621	0.3712	0.3712	0.3757	0.3667
177.5	0.3712	0.3712	0.3667	0.3756	0.3667	0.3667	0.3667	0.3757	0.3757	0.3667
180.0	0.3712	0.3712	0.3667	0.3667	0.3667	0.3712	0.3712	0.3757	0.3757	0.3803

C Range: 0 - 360DEG
C Interval: 5.0DEG
Test Speed: HIGH
Temperature: 25DEG
Operators: yechihong
Test Date: 2019-05-22

γ Range: 0 - 180DEG
 γ Interval: 0.5DEG
Test System: EVERFINE GO-2000A_V1 SYSTEM V2.0.272
Humidity: 70%
Test Distance: 8.425m [K=1.0000]
Remarks:

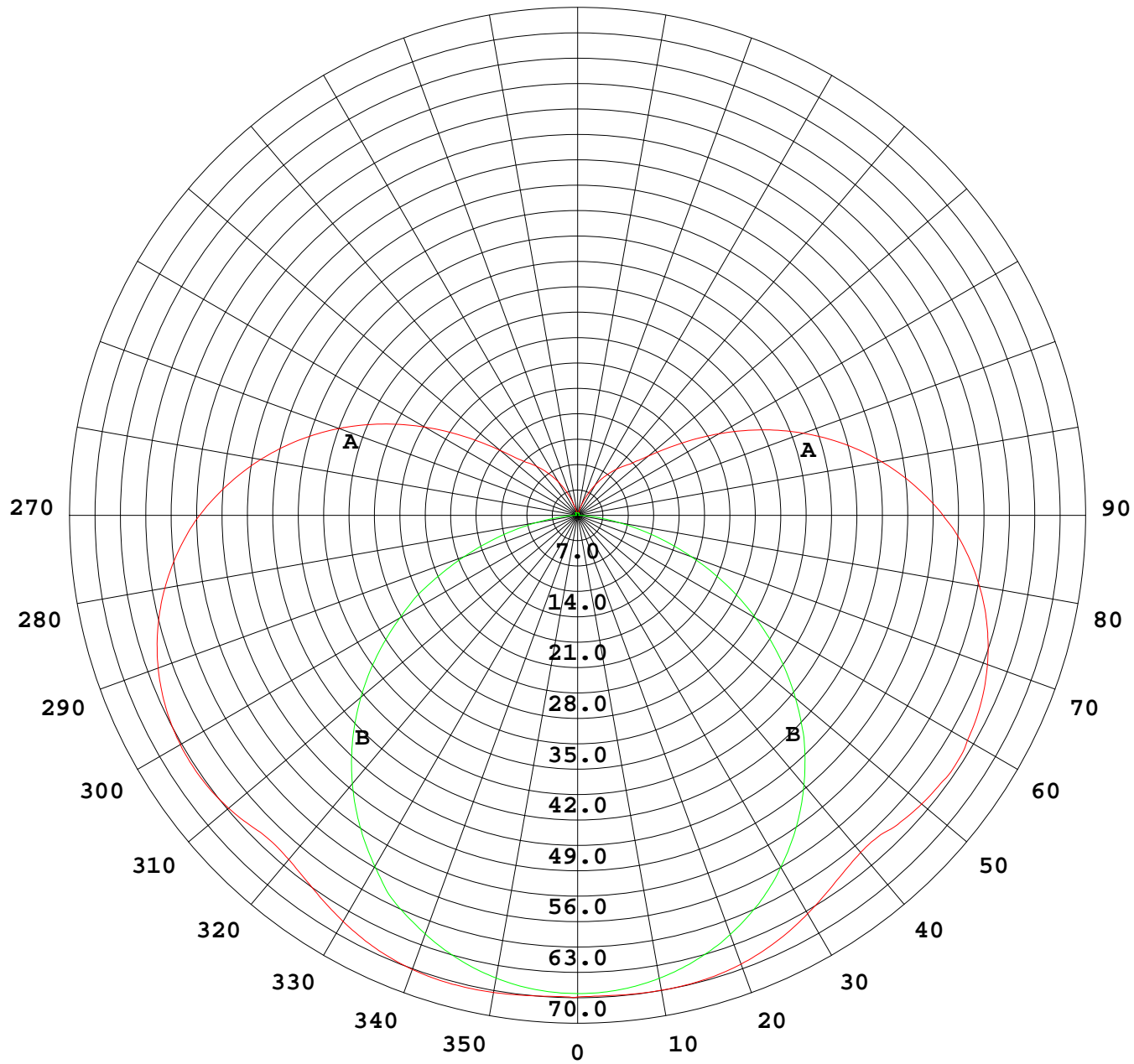
Photometric Data Table [cd]

G/C	350.0	355.0
0.0	65.92	65.93
2.5	65.92	65.97
5.0	66.03	66.06
7.5	66.18	66.23
10.0	66.31	66.35
12.5	66.38	66.42
15.0	66.40	66.43
17.5	66.27	66.37
20.0	66.09	66.19
22.5	65.79	65.88
25.0	65.33	65.46
27.5	64.78	64.91
30.0	64.11	64.27
32.5	63.38	63.57
35.0	62.63	62.83
37.5	61.92	62.14
40.0	61.33	61.60
42.5	60.97	61.35
45.0	61.05	61.46
47.5	61.48	62.03
50.0	61.89	62.75
52.5	62.16	62.97
55.0	62.33	62.91
57.5	62.34	62.93
60.0	62.23	62.81
62.5	62.00	62.56
65.0	61.62	62.20
67.5	61.11	61.68
70.0	60.46	61.07
72.5	59.70	60.31
75.0	58.82	59.44
77.5	57.84	58.45
80.0	56.70	57.33
82.5	55.45	56.08
85.0	54.09	54.72
87.5	52.57	53.25
90.0	51.03	51.60
92.5	49.28	49.87
95.0	47.41	47.96
97.5	45.44	45.99
100.0	43.40	43.92
102.5	41.22	41.74
105.0	38.94	39.47
107.5	36.57	37.10
110.0	34.11	34.63
112.5	31.56	32.08
115.0	28.94	29.44
117.5	26.26	26.73
120.0	23.56	24.00
122.5	20.86	21.27
125.0	18.23	18.59
127.5	15.70	16.03
130.0	13.42	13.70
132.5	11.53	11.75
135.0	10.19	10.37
137.5	9.349	9.482
140.0	8.487	8.647
142.5	7.620	7.769
145.0	6.716	6.872
147.5	5.806	5.949
150.0	4.862	4.996
152.5	3.991	4.076
155.0	3.138	3.217
157.5	2.187	2.372
160.0	1.374	1.554
162.5	0.7131	0.7828
165.0	0.3576	0.3716
167.5	0.3666	0.3666
170.0	0.3667	0.3667
172.5	0.3712	0.3711
175.0	0.3712	0.3712
177.5	0.3712	0.3712
180.0	0.3712	0.3803

C Range: 0 - 360DEG
 C Interval: 5.0DEG
 Test Speed: HIGH
 Temperature: 25DEG
 Operators: yechihong
 Test Date: 2019-05-22

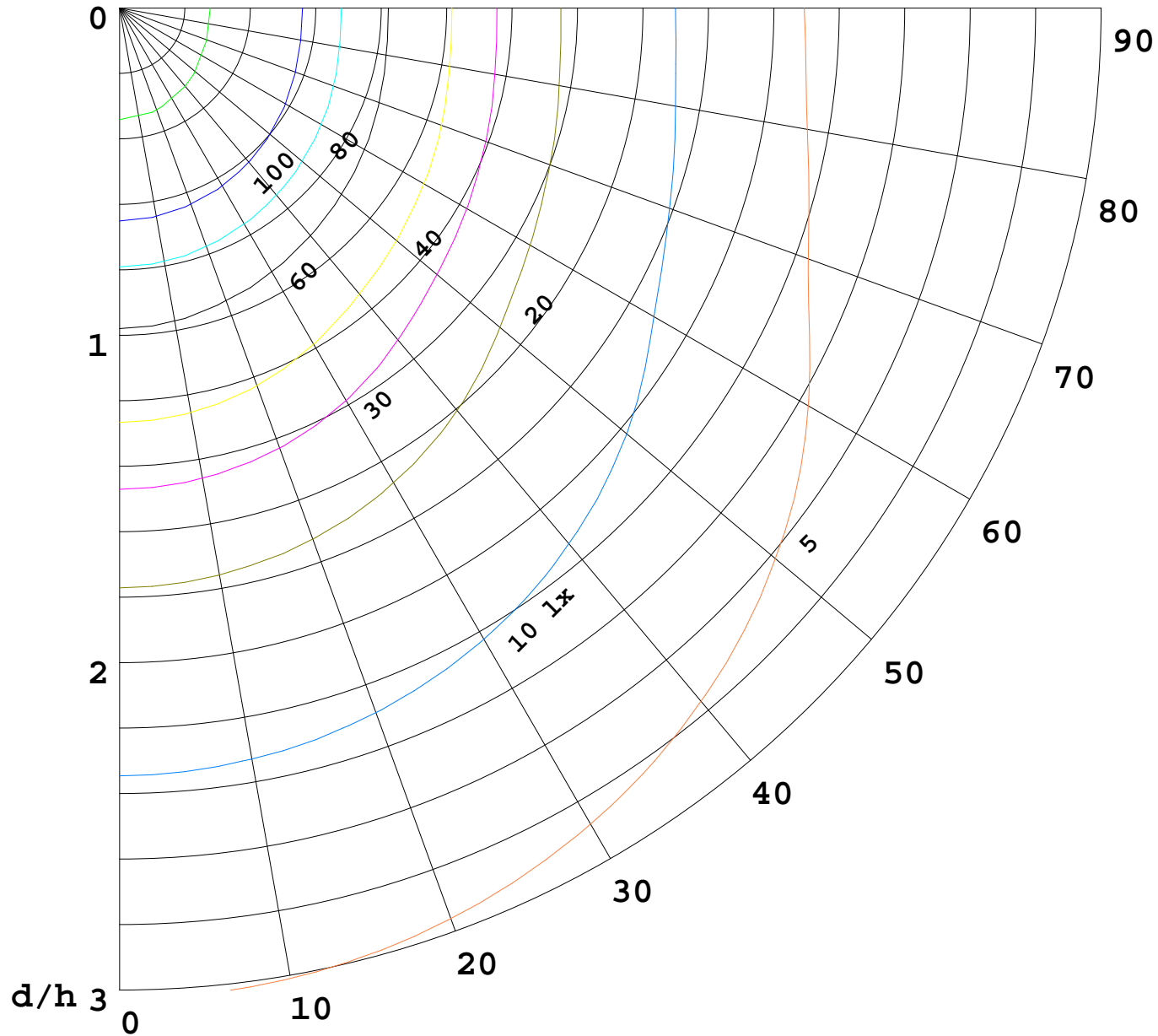
γ Range: 0 - 180DEG
 γ Interval: 0.5DEG
 Test System: EVERFINE GO-2000A_V1 SYSTEM V2.0.272
 Humidity: 70%
 Test Distance: 8.425m [K=1.0000]
 Remarks:

I(cd)



1000 lm

$K = 1$



F = 5000 lm
K = 0.7
Hcc = 0.0 m
Hfc = 0.0 m
Eave = 100 lx

	Pcc	Pw	Pfc
—————	70	50	30
—————	50	30	20

