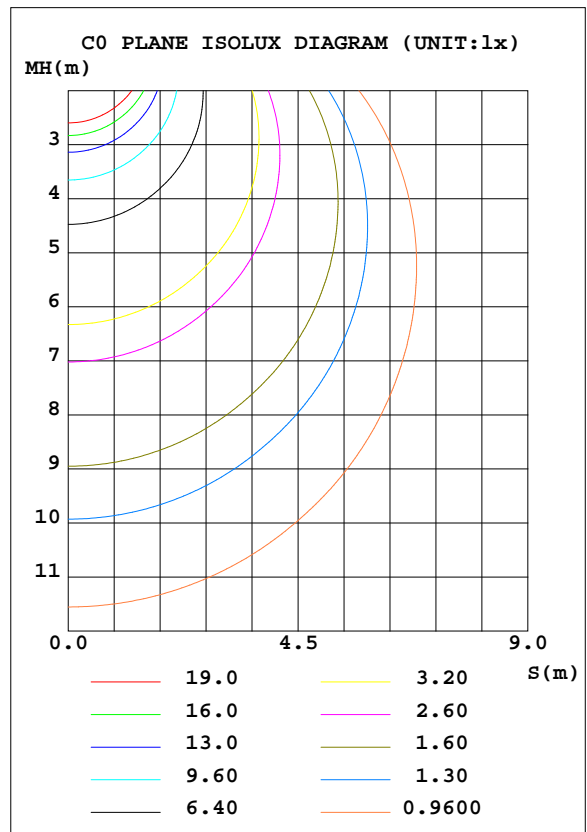
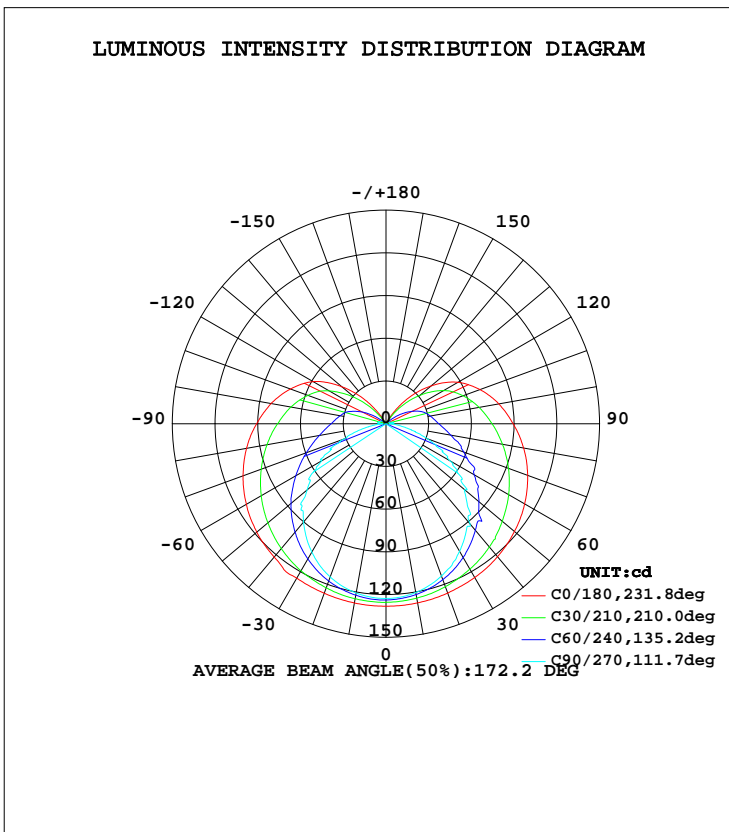


LUMINAIRE PHOTOMETRIC TEST REPORT

Test:U:120.7V I:0.1321A P:15.81W PF:0.9909 Lamp Flux:703.448x1 lm		
NAME: RNS5161200L30D1SN	TYPE:	WEIGHT:
DIM.:	SPEC.:	SERIAL No.:2019-05-25-01
MFR.: AFX	SUR.:0.075MX0.335M	PROTECTION ANGLE:

DATA OF LAMP		PHOTOMETRIC DATA Eff: 44.50 lm/W			
MODEL	RNS5161200L30D1SN	I _{max} (cd)	128.1	S/MH(C0/180)	1.48
NOMINAL POWER(W)	16	LOR(%)	100.0	S/MH(C90/270)	1.25
RATED VOLTAGE(V)	120	TOTAL FLUX(lm)	703.45	η UP, DN(C0-180)	11.8, 37.9
NOMINAL FLUX(lm)	703.448	CIE CLASS	SEMI-D.	η UP, DN(C180-360)	12.1, 38.2
LAMPS INSIDE	1	η up(%)	23.9	CIBSE SHR NOM	1.50
TEST VOLTAGE(V)	120.7	η down(%)	76.1	CIBSE SHR MAX	1.55



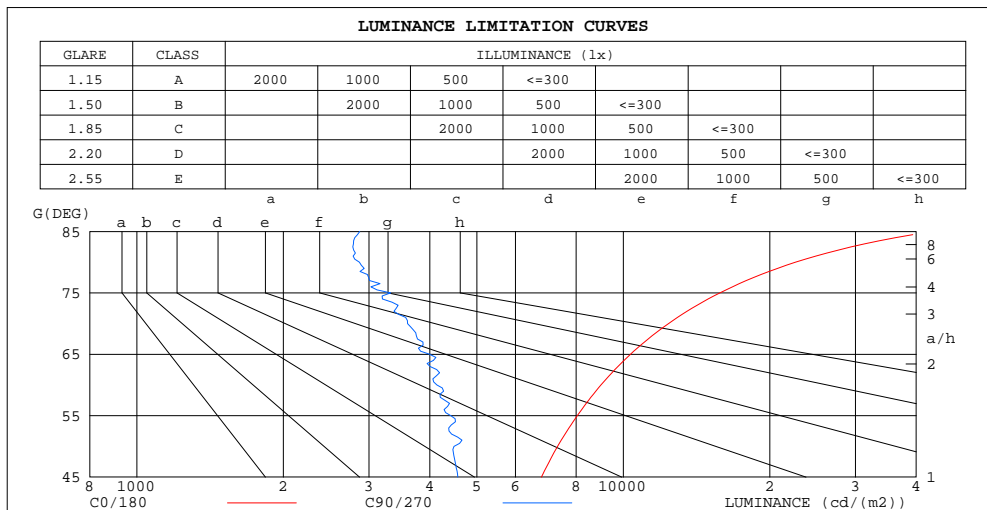
C Range: 0 - 360DEG
 C Interval: 5.0DEG
 Test Speed: HIGH
 Temperature:25DEG
 Operators:yechihong
 Test Date:2019-05-25

γ Range: 0 - 180DEG
 γ Interval: 0.5DEG
 Test System:EVERFINE GO-2000A_V1 SYSTEM V2.0.272
 Humidity:70%
 Test Distance:8.425m [K=1.0000]
 Remarks:

ZONAL FLUX DIAGRAM
AND LUMINANCE LIMITATION CURVES

ZONAL FLUX DIAGRAM:

γ	C0	C45	C90	C135	C180	C225	C270	C315	γ	Φ zone	Φ total	lum,lamp
5	128.1	124.1	122.1	121.7	128.1	124.3	122.2	121.6	0- 5	2.950	2.950	0.42,0.42
10	127.8	123.0	120.4	120.9	127.8	123.5	120.7	120.6	5- 10	8.783	11.73	1.67,1.67
15	127.3	121.3	117.6	119.3	127.3	122.0	118.1	119.1	10- 15	14.42	26.15	3.72,3.72
20	126.5	119.2	113.8	117.2	126.7	120.1	114.5	117.0	15- 20	19.72	45.87	6.52,6.52
25	125.6	116.4	109.6	114.5	126.0	117.5	109.9	114.3	20- 25	24.59	70.46	10,10
30	124.7	113.1	103.4	111.4	125.2	114.5	104.1	111.0	25- 30	28.92	99.38	14.1,14.1
35	123.5	109.5	96.70	107.9	125.1	111.1	97.50	107.4	30- 35	32.63	132.0	18.8,18.8
40	121.9	105.6	91.94	104.0	122.2	107.2	90.06	103.4	35- 40	35.66	167.7	23.8,23.8
45	120.0	101.3	80.74	99.51	120.5	102.8	84.37	99.12	40- 45	37.98	205.7	29.2,29.2
50	117.7	96.67	72.08	94.78	118.4	98.17	72.43	94.46	45- 50	39.45	245.1	34.8,34.8
55	115.3	92.99	63.37	91.38	116.1	93.32	65.32	89.53	50- 55	40.16	285.3	40.6,40.6
60	112.4	86.72	51.70	84.99	113.2	88.38	52.27	84.53	55- 60	40.16	325.4	46.3,46.3
65	109.3	82.61	42.21	79.84	110.2	83.29	42.12	79.69	60- 65	39.43	364.9	51.9,51.9
70	105.9	77.12	30.79	75.12	106.8	78.25	31.26	74.71	65- 70	38.09	402.9	57.3,57.3
75	102.2	72.02	21.50	69.75	103.2	73.23	21.96	69.92	70- 75	36.27	439.2	62.4,62.4
80	98.07	67.07	12.45	65.04	99.42	68.49	12.63	65.27	75- 80	34.16	473.4	67.3,67.3
85	93.87	62.42	6.255	60.54	95.34	63.96	6.096	60.75	80- 85	31.93	505.3	71.8,71.8
90	89.33	58.24	2.581	56.26	90.83	59.62	2.330	56.71	85- 90	29.80	535.1	76.1,76.1
95	84.94	54.53	5.523	52.51	86.44	55.81	5.845	53.12	90- 95	27.91	563.0	80,80
100	80.47	51.08	5.017	48.82	81.94	52.09	5.808	49.76	95- 100	26.06	589.1	83.7,83.7
105	75.57	47.53	4.293	45.06	76.87	48.23	5.331	46.31	100-105	23.92	613.0	87.1,87.1
110	70.26	43.71	3.523	41.19	71.45	44.23	4.776	42.65	105-110	21.45	634.4	90.2,90.2
115	64.56	39.15	2.839	35.80	65.71	38.67	4.187	38.22	110-115	18.70	653.2	92.9,92.9
120	58.32	33.13	2.237	28.89	59.24	31.39	3.661	32.38	115-120	15.71	668.9	95.1,95.1
125	50.49	26.40	1.879	21.70	50.59	23.76	3.177	25.80	120-125	12.48	681.3	96.9,96.9
130	41.42	19.24	1.491	13.88	40.55	15.56	2.720	18.88	125-130	9.243	690.6	98.2,98.2
135	31.88	11.74	1.195	5.791	30.24	7.103	2.353	11.63	130-135	6.276	696.9	99.1,99.1
140	21.95	4.451	0.8288	0.9275	19.45	1.364	1.950	4.708	135-140	3.735	700.6	99.6,99.6
145	11.75	0.7102	0.6292	0.7331	8.540	0.9512	1.579	0.9376	140-145	1.768	702.4	99.8,99.8
150	2.141	0.6201	0.5794	0.6427	0.6919	0.7154	1.203	0.7066	145-150	0.5433	702.9	99.9,99.9
155	0.7067	0.6201	0.5840	0.5930	0.5975	0.5933	0.8960	0.6066	150-155	0.1797	703.1	99.9,99.9
160	0.6564	0.6202	0.6021	0.5885	0.6022	0.5702	0.6742	0.6111	155-160	0.1314	703.2	100,100
165	0.6429	0.6292	0.6201	0.6156	0.6245	0.5793	0.6021	0.6068	160-165	0.1002	703.3	100,100
170	0.6472	0.6383	0.6292	0.6248	0.6429	0.6020	0.6067	0.6292	165-170	0.0729	703.4	100,100
175	0.6518	0.6427	0.6338	0.6383	0.6609	0.6293	0.6203	0.6428	170-175	0.0452	703.4	100,100
180	0.6609	0.6383	0.6383	0.6519	0.6564	0.6473	0.6383	0.6428	175-180	0.0153	703.4	100,100
DEG	LUMINOUS INTENSITY:cd MAX (Ii - Iavg)/Iavg (0-135) = 98.8 %										UNIT:lm	



LUMINANCE cd/(m2)		
G(DEG)	C0/180	C90/270
85	43083	2870
80	22591	2867
75	15790	3323
70	12381	3601
65	10344	3995
60	8996	4136
55	8043	4419
50	7327	4485
45	6786	4567

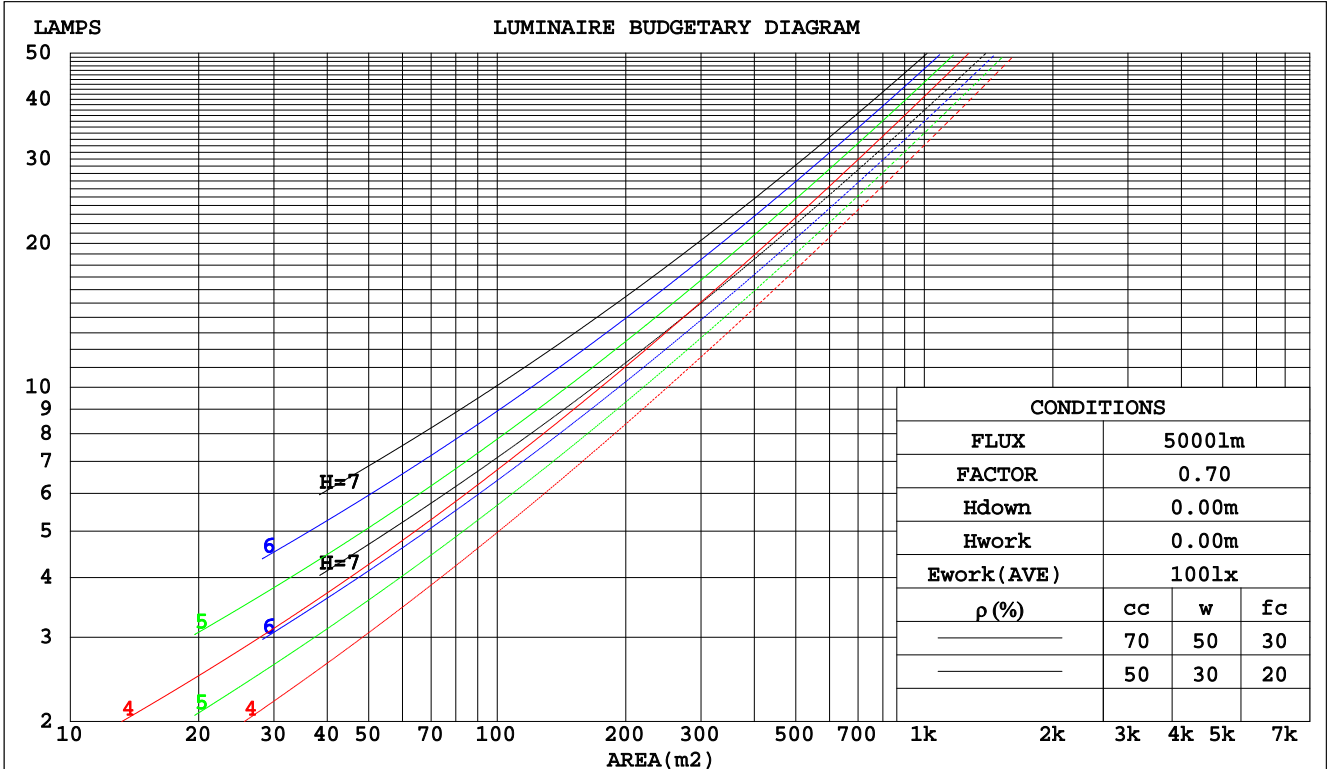
C Range: 0 - 360DEG
C Interval: 5.0DEG
Test Speed: HIGH
Temperature:25DEG
Operators:yechihong
Test Date:2019-05-25

γ Range: 0 - 180DEG
γ Interval: 0.5DEG
Test System:EVERFINE GO-2000A_V1 SYSTEM V2.0.272
Humidity:70%
Test Distance:8.425m [K=1.0000]
Remarks:

CU AND LUMINAIRE BUDGETARY ESTIMATE DIAGRAM

Test:U:120.7V I:0.1321A P:15.81W PF:0.9909 Lamp Flux:703.448x1 lm		
NAME: RNS5161200L30D1SN	TYPE:	WEIGHT:
DIM.:	SPEC.:	SERIAL No.:2019-05-25-01
MFR.: AFX	SUR.:0.075MX0.335M	PROTECTION ANGLE:

pcc	80%			70%			50%			30%			10%			0
	50%	30%	10%	50%	30%	10%	50%	30%	10%	50%	30%	10%	50%	30%	10%	0
pw																
pfc	20%			20%			20%			20%			20%			0
RCR	RCR:Room Cavity Ratio															
	Coefficients of Utilization(CU)															
0.0	1.13	1.13	1.13	1.08	1.08	1.08	.98	.98	.98	.89	.89	.89	.80	.80	.80	.76
1.0	.93	.88	.83	.89	.84	.79	.80	.76	.72	.72	.69	.66	.64	.62	.60	.56
2.0	.79	.71	.64	.75	.68	.62	.68	.62	.57	.61	.56	.52	.54	.51	.47	.44
3.0	.69	.59	.52	.65	.57	.50	.59	.52	.46	.53	.47	.42	.47	.42	.39	.35
4.0	.60	.50	.43	.57	.48	.41	.51	.44	.38	.46	.40	.35	.41	.36	.32	.29
5.0	.53	.43	.36	.51	.42	.35	.46	.38	.32	.41	.35	.30	.37	.32	.27	.25
6.0	.47	.38	.31	.45	.36	.30	.41	.34	.28	.37	.31	.26	.33	.28	.24	.21
7.0	.43	.34	.27	.41	.32	.26	.37	.30	.24	.33	.27	.23	.30	.25	.21	.18
8.0	.39	.30	.24	.37	.29	.23	.34	.27	.22	.31	.24	.20	.28	.22	.19	.16
9.0	.35	.27	.21	.34	.26	.21	.31	.24	.19	.28	.22	.18	.25	.20	.17	.14
10.0	.32	.24	.19	.31	.24	.18	.28	.22	.17	.26	.20	.16	.24	.19	.15	.13



C Range: 0 - 360DEG
 C Interval: 5.0DEG
 Test Speed: HIGH
 Temperature:25DEG
 Operators:yechihong
 Test Date:2019-05-25

γ Range: 0 - 180DEG
 γ Interval: 0.5DEG
 Test System:EVERFINE GO-2000A_V1 SYSTEM V2.0.272
 Humidity:70%
 Test Distance:8.425m [K=1.0000]
 Remarks:

WEC AND CCEC

Test:U:120.7V I:0.1321A P:15.81W PF:0.9909 Lamp Flux:703.448x1 lm		
NAME: RNS5161200L30D1SN	TYPE:	WEIGHT:
DIM.:	SPEC.:	SERIAL No.:2019-05-25-01
MFR.: AFX	SUR.:0.075MX0.335M	PROTECTION ANGLE:

ρcc	80%			70%			50%			30%			10%			0
ρw	50%	30%	10%	50%	30%	10%	50%	30%	10%	50%	30%	10%	50%	30%	10%	0
ρfc	20%			20%			20%			20%			20%			0
RCR	RCR:Room Cavity Ratio						Wall Exitance Coefficients(WEC)									
0.0																
1.0	.403	.229	.073	.388	.222	.070	.361	.207	.066	.336	.194	.062	.313	.181	.058	
2.0	.343	.188	.058	.330	.182	.056	.305	.170	.053	.282	.158	.050	.261	.148	.047	
3.0	.302	.161	.048	.290	.155	.047	.268	.145	.044	.247	.135	.042	.228	.126	.039	
4.0	.270	.141	.041	.260	.136	.040	.239	.127	.038	.220	.118	.036	.203	.110	.034	
5.0	.245	.125	.036	.235	.121	.035	.216	.113	.033	.199	.105	.031	.183	.098	.029	
6.0	.224	.112	.032	.215	.109	.031	.198	.101	.029	.182	.095	.028	.167	.088	.026	
7.0	.206	.102	.029	.198	.099	.028	.182	.092	.027	.167	.086	.025	.154	.080	.023	
8.0	.191	.093	.026	.183	.090	.025	.169	.084	.024	.155	.079	.023	.142	.073	.021	
9.0	.177	.086	.024	.170	.083	.023	.157	.078	.022	.145	.073	.021	.133	.067	.019	
10.0	.166	.080	.022	.159	.077	.021	.147	.072	.020	.135	.067	.019	.124	.063	.018	

ρcc	80%			70%			50%			30%			10%			0
ρw	50%	30%	10%	50%	30%	10%	50%	30%	10%	50%	30%	10%	50%	30%	10%	0
ρfc	20%			20%			20%			20%			20%			0
RCR	RCR:Room Cavity Ratio						Ceiling Cavity Exitance Coefficients(CCEC)									
0.0	.373	.373	.373	.319	.319	.319	.217	.217	.217	.125	.125	.125	.040	.040	.040	
1.0	.371	.339	.311	.317	.291	.268	.217	.200	.185	.125	.116	.108	.040	.037	.035	
2.0	.364	.317	.277	.312	.273	.239	.214	.189	.167	.123	.110	.098	.040	.035	.032	
3.0	.357	.301	.256	.306	.259	.222	.210	.180	.156	.121	.105	.092	.039	.034	.030	
4.0	.349	.288	.242	.299	.249	.210	.206	.174	.148	.119	.102	.088	.038	.033	.029	
5.0	.341	.279	.233	.293	.241	.202	.202	.168	.143	.117	.099	.085	.038	.032	.028	
6.0	.334	.271	.226	.287	.235	.197	.198	.164	.139	.115	.097	.083	.037	.032	.027	
7.0	.327	.264	.221	.281	.229	.192	.194	.161	.136	.113	.095	.081	.036	.031	.027	
8.0	.320	.259	.217	.275	.225	.189	.191	.158	.134	.111	.093	.080	.036	.030	.026	
9.0	.314	.254	.214	.270	.221	.187	.187	.155	.133	.109	.092	.079	.035	.030	.026	
10.0	.308	.250	.212	.265	.217	.185	.184	.153	.131	.107	.090	.078	.035	.030	.026	

C Range: 0 - 360DEG
 C Interval: 5.0DEG
 Test Speed: HIGH
 Temperature:25DEG
 Operators:yechihong
 Test Date:2019-05-25

γ Range: 0 - 180DEG
 γ Interval: 0.5DEG
 Test System:EVERFINE GO-2000A_V1 SYSTEM V2.0.272
 Humidity:70%
 Test Distance:8.425m [K=1.0000]
 Remarks:

Uncorrected UGR Table

Test:U:120.7V I:0.1321A P:15.81W PF:0.9909 Lamp Flux:703.448x1 lm										
NAME: RNS5161200L30D1SN					TYPE:			WEIGHT:		
DIM.:					SPEC.:			SERIAL No.:2019-05-25-01		
MFR.: AFX					SUR.:0.075MX0.335M			PROTECTION ANGLE:		
ceiling/cavity	0.7	0.7	0.5	0.5	0.3	0.7	0.7	0.5	0.5	0.3
walls	0.5	0.3	0.5	0.3	0.3	0.5	0.3	0.5	0.3	0.3
working plane	0.2	0.2	0.2	0.2	0.2	0.2	0.2	0.2	0.2	0.2
Room dimensions	Viewed crosswise					Viewed endwise				
x = 2H y = 2H	19.3	20.6	19.9	21.2	21.9	16.1	17.4	16.7	18.0	18.7
3H	22.3	23.5	22.9	24.2	24.9	17.5	18.7	18.1	19.4	20.1
4H	24.0	25.2	24.7	25.8	26.6	18.0	19.2	18.7	19.8	20.6
6H	25.9	27.0	26.6	27.7	28.4	18.4	19.5	19.0	20.1	20.9
8H	26.9	28.0	27.6	28.7	29.5	18.5	19.5	19.1	20.2	21.0
12H	28.1	29.2	28.8	29.8	30.6	18.5	19.6	19.2	20.2	21.0
4H 2H	19.8	21.0	20.4	21.6	22.4	17.6	18.8	18.2	19.4	20.1
3H	23.1	24.1	23.8	24.8	25.6	19.4	20.4	20.0	21.1	21.9
4H	25.0	25.9	25.7	26.6	27.5	20.1	21.1	20.8	21.8	22.6
6H	27.1	28.0	27.8	28.7	29.5	20.7	21.5	21.4	22.2	23.1
8H	28.3	29.1	29.0	29.8	30.7	20.9	21.7	21.6	22.4	23.3
12H	29.6	30.4	30.4	31.1	32.0	21.0	21.7	21.7	22.5	23.4
8H 4H	25.3	26.1	26.1	26.9	27.7	21.7	22.5	22.4	23.2	24.1
6H	27.8	28.4	28.5	29.2	30.1	22.8	23.4	23.5	24.2	25.1
8H	29.2	29.8	30.0	30.6	31.5	23.2	23.8	24.0	24.6	25.5
12H	30.8	31.3	31.6	32.1	33.1	23.5	24.1	24.3	24.9	25.8
12H 4H	25.4	26.1	26.1	26.8	27.7	22.2	22.9	23.0	23.7	24.6
6H	27.9	28.5	28.7	29.3	30.2	23.6	24.2	24.4	25.0	25.9
8H	29.4	29.9	30.2	30.7	31.7	24.3	24.8	25.1	25.6	26.6
Variations with the observer position at spacings:										
S = 1.0H	+ 0.1 / - 0.1					+ 0.1 / - 0.1				
1.5H	+ 0.2 / - 0.3					+ 0.2 / - 0.2				
2.0H	+ 0.3 / - 0.4					+ 0.3 / - 0.3				

CIE Pub.117 Corrected 703.4 lm Total Lamp Luminous Flux.(8log(F/F0) = -1.2)

C Range: 0 - 360DEG
 C Interval: 5.0DEG
 Test Speed: HIGH
 Temperature:25DEG
 Operators:yechihong
 Test Date:2019-05-25

γ Range: 0 - 180DEG
 γ Interval: 0.5DEG
 Test System:EVERFINE GO-2000A_V1 SYSTEM V2.0.272
 Humidity:70%
 Test Distance:8.425m [K=1.0000]
 Remarks:

UTILIZATION FACTORS TABLE

Test:U:120.7V I:0.1321A P:15.81W PF:0.9909 Lamp Flux:703.448x1 lm		
NAME: RNS5161200L30D1SN	TYPE:	WEIGHT:
DIM.:	SPEC.:	SERIAL No.:2019-05-25-01
MFR.: AFX	SUR.:0.075MX0.335M	PROTECTION ANGLE:

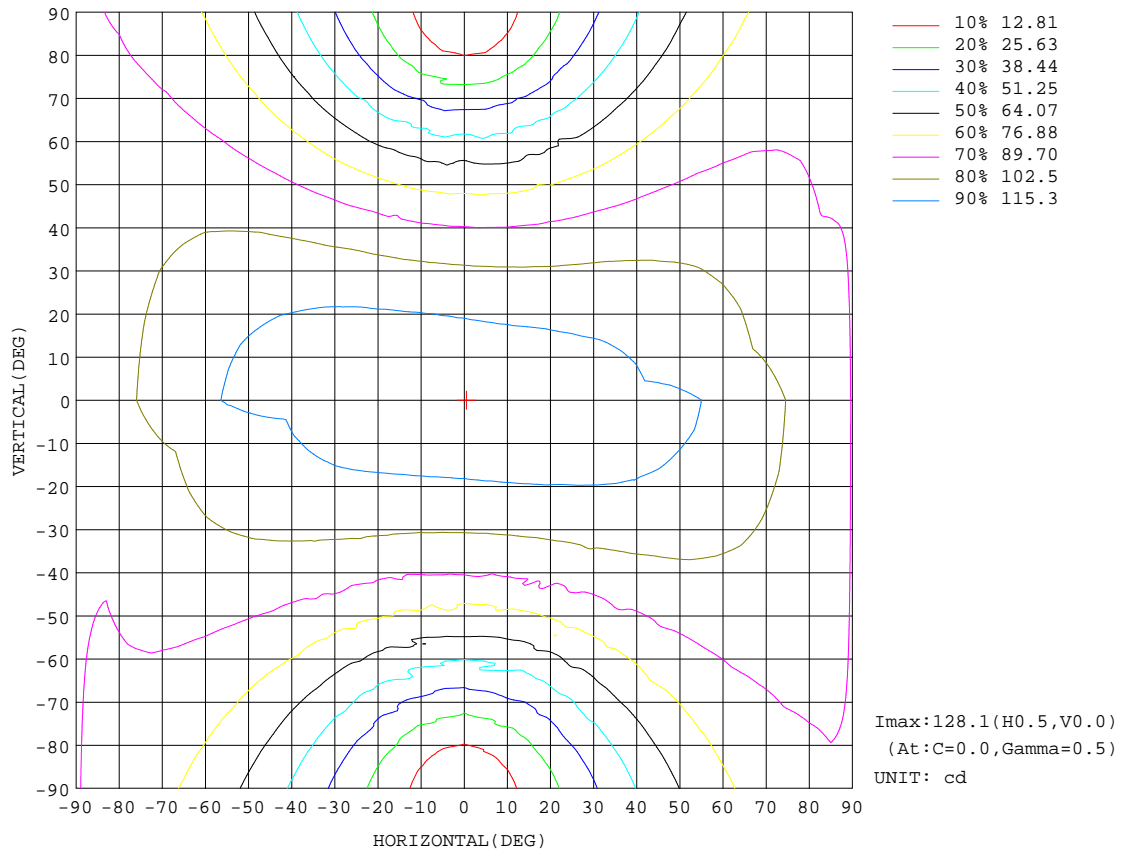
REFLECTANCE										
Ceiling	0.8	0.8	0.8	0.7	0.7	0.7	0.5	0.5	0.5	0
Walls	0.7	0.5	0.3	0.7	0.5	0.3	0.7	0.5	0.3	0
Working plane	0.2	0.2	0.2	0.2	0.2	0.2	0.2	0.2	0.2	0
ROOM INDEX	UTILIZATION FACTORS(PERCENT) $k(RI) \times RCR = 5$									
k = 0.60	45	32	25	43	31	24	41	30	24	17
0.80	54	40	32	52	39	31	49	38	31	22
1.00	61	48	39	59	46	38	55	47	37	28
1.25	68	55	46	65	53	45	61	50	43	33
1.50	73	60	51	70	58	50	65	55	48	36
2.00	81	69	60	77	66	58	71	62	55	42
2.50	85	74	66	82	72	64	75	66	60	46
3.00	89	79	71	85	76	69	78	70	64	49
4.00	94	85	78	90	82	75	82	75	70	54
5.00	97	90	83	93	86	80	84	79	74	57
ROOM INDEX	UF(total)									Direct
According to DIN EN 13032-2 2004			Suspended				SHRNOM = 1.25			

C Range: 0 - 360DEG
 C Interval: 5.0DEG
 Test Speed: HIGH
 Temperature:25DEG
 Operators:yechihong
 Test Date:2019-05-25

γ Range: 0 - 180DEG
 γ Interval: 0.5DEG
 Test System:EVERFINE GO-2000A_V1 SYSTEM V2.0.272
 Humidity:70%
 Test Distance:8.425m [K=1.0000]
 Remarks:

ISOCANDELA DIAGRAM

Test:U:120.7V I:0.1321A P:15.81W PF:0.9909 Lamp Flux:703.448x1 lm		
NAME: RNS5161200L30D1SN	TYPE:	WEIGHT:
DIM.:	SPEC.:	SERIAL No.:2019-05-25-01
MFR.: AFX	SUR.:0.075MX0.335M	PROTECTION ANGLE:

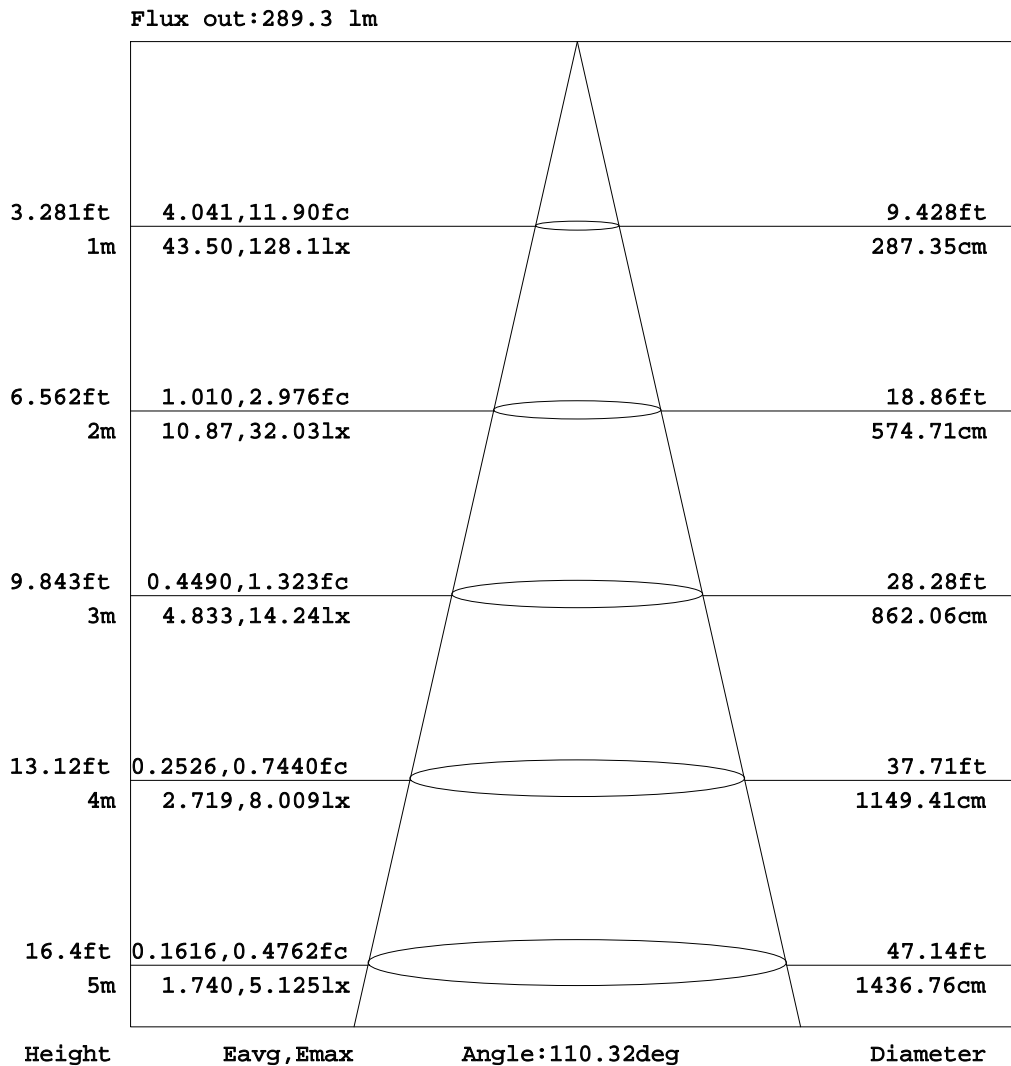


C Range: 0 - 360DEG
 C Interval: 5.0DEG
 Test Speed: HIGH
 Temperature: 25DEG
 Operators: yechihong
 Test Date: 2019-05-25

γ Range: 0 - 180DEG
 γ Interval: 0.5DEG
 Test System: EVERFINE GO-2000A_V1 SYSTEM V2.0.272
 Humidity: 70%
 Test Distance: 8.425m [K=1.0000]
 Remarks:

AAI Figure

Test:U:120.7V I:0.1321A P:15.81W PF:0.9909 Lamp Flux:703.448x1 lm		
NAME: RNS5161200L30D1SN	TYPE:	WEIGHT:
DIM.:	SPEC.:	SERIAL No.:2019-05-25-01
MFR.: AFX	SUR.:0.075MX0.335M	PROTECTION ANGLE:



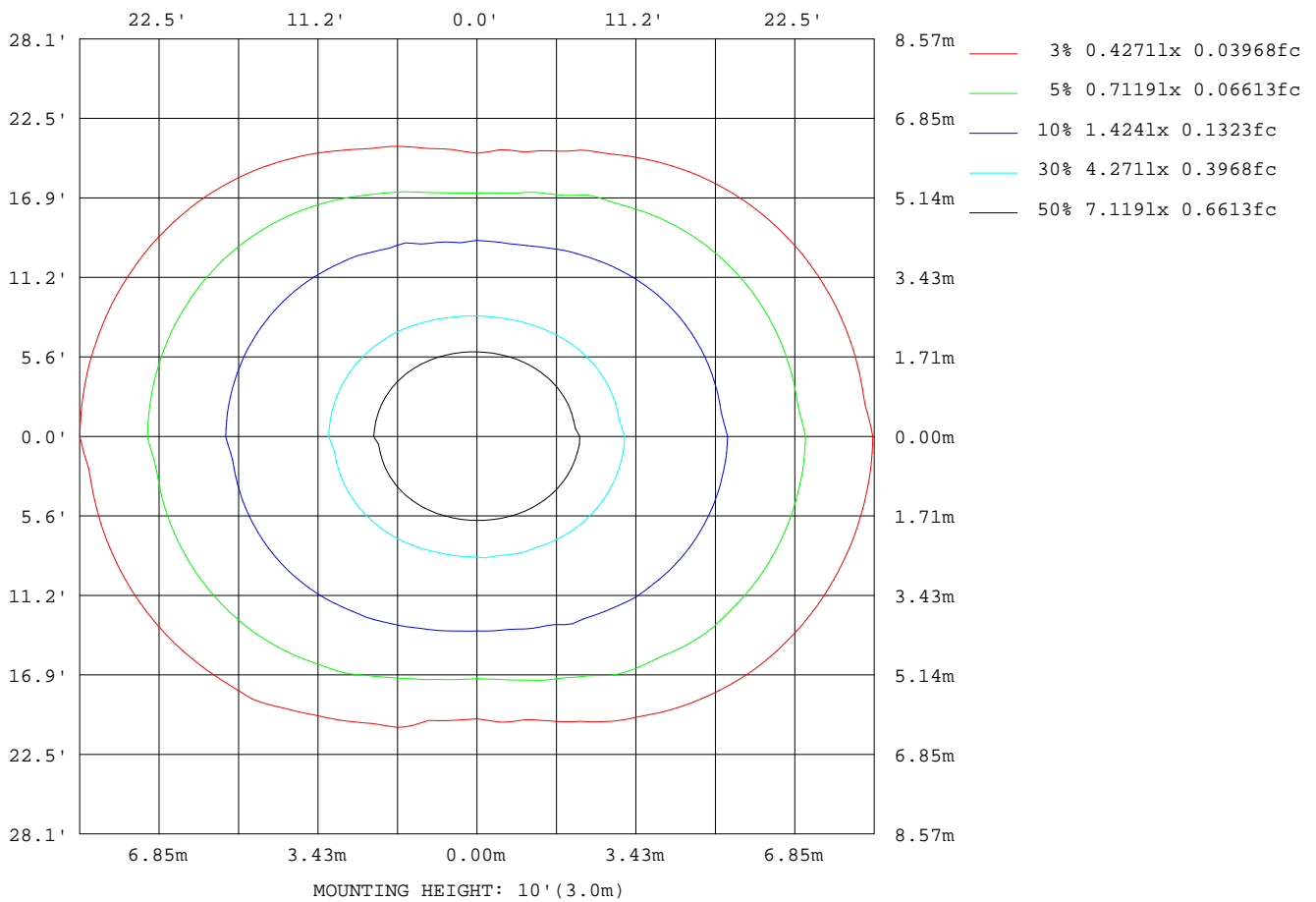
Note:The Curves indicate the illuminated area and the average illumination when the luminaire is at different distance.

C Range: 0 - 360DEG
 C Interval: 5.0DEG
 Test Speed: HIGH
 Temperature:25DEG
 Operators:yechihong
 Test Date:2019-05-25

γ Range: 0 - 180DEG
 γ Interval: 0.5DEG
 Test System:EVERFINE GO-2000A_V1 SYSTEM V2.0.272
 Humidity:70%
 Test Distance:8.425m [K=1.0000]
 Remarks:

ISOLUX DIAGRAM

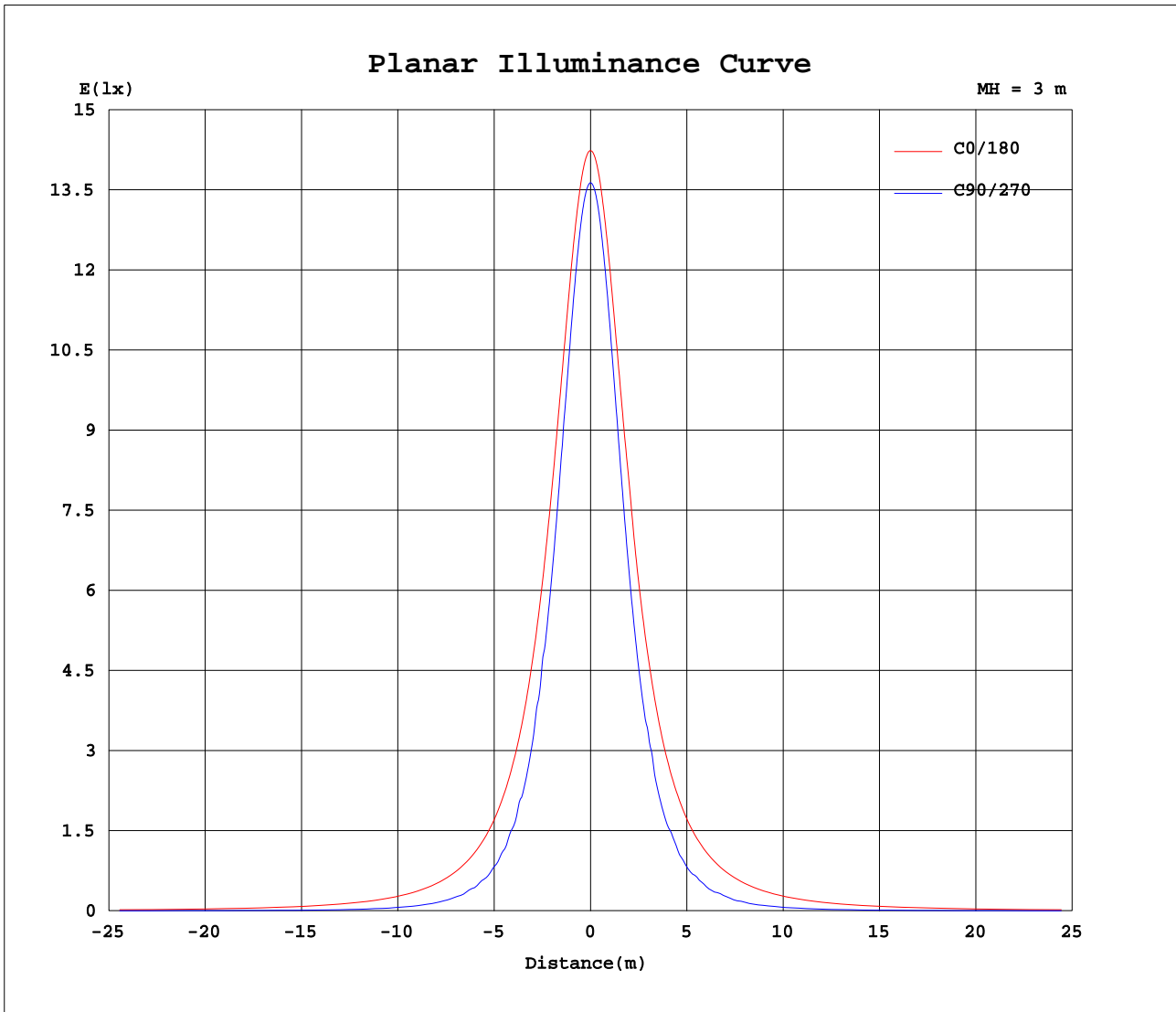
Test:U:120.7V I:0.1321A P:15.81W PF:0.9909 Lamp Flux:703.448x1 lm		
NAME: RNS5161200L30D1SN	TYPE:	WEIGHT:
DIM.:	SPEC.:	SERIAL No.:2019-05-25-01
MFR.: AFX	SUR.:0.075MX0.335M	PROTECTION ANGLE:



C Range: 0 - 360DEG
 C Interval: 5.0DEG
 Test Speed: HIGH
 Temperature:25DEG
 Operators:yechihong
 Test Date:2019-05-25

γ Range: 0 - 180DEG
 γ Interval: 0.5DEG
 Test System:EVERFINE GO-2000A_V1 SYSTEM V2.0.272
 Humidity:70%
 Test Distance:8.425m [K=1.0000]
 Remarks:

Planar Illuminance Curve



C Range: 0 - 360DEG
 C Interval: 5.0DEG
 Test Speed: HIGH
 Temperature: 25DEG
 Operators: yechihong
 Test Date: 2019-05-25

γ Range: 0 - 180DEG
 γ Interval: 0.5DEG
 Test System: EVERFINE GO-2000A_V1 SYSTEM V2.0.272
 Humidity: 70%
 Test Distance: 8.425m [K=1.0000]
 Remarks:

LUMINOUS DISTRIBUTION INTENSITY DATA

Test:U:120.7V I:0.1321A P:15.81W PF:0.9909 Lamp Flux:703.448x1 lm		
NAME: RNS5161200L30D1SN	TYPE:	WEIGHT:
DIM.:	SPEC.:	SERIAL No.:2019-05-25-01
MFR.: AFX	SUR.:0.075MX0.335M	PROTECTION ANGLE:

Table--1

UNIT: cd

C(DEG) γ (DEG)	0	5	10	15	20	25	30	35	40	45	50	55	60	65	70	75	80	85	90
0	128	128	127	127	126	126	125	125	125	124	124	124	124	124	123	123	123	123	123
5	128	127	127	126	126	125	125	125	124	124	124	123	123	123	123	123	122	122	122
10	128	127	126	126	125	125	124	124	123	123	123	122	122	121	121	121	121	121	120
15	127	127	126	125	125	124	123	123	122	121	121	120	120	119	119	118	118	118	118
20	127	126	125	124	123	123	122	121	120	119	118	117	117	116	115	115	114	114	114
25	126	125	124	123	122	121	120	119	118	116	115	114	113	112	111	110	110	109	110
30	125	124	123	122	121	119	118	116	115	113	111	110	108	107	106	105	104	104	103
35	123	123	122	121	119	117	116	114	112	110	107	105	103	102	99.9	98.7	97.6	97.1	96.7
40	122	121	120	119	117	115	113	111	108	106	103	100	97.7	97.5	93.4	92.5	91.0	92.9	91.9
45	120	119	118	116	115	113	110	107	104	101	98.1	94.8	94.3	89.4	89.2	85.8	84.0	81.5	80.7
50	118	117	116	114	112	110	107	104	100	96.7	92.8	90.7	85.2	84.4	78.3	76.0	74.2	72.2	72.1
55	115	115	113	111	109	106	103	99.7	95.7	93.0	87.4	83.0	78.8	74.2	70.0	68.5	65.5	63.3	63.4
60	112	112	110	108	106	103	99.5	95.7	91.3	86.7	81.6	76.7	71.5	66.7	62.6	58.2	57.0	53.6	51.7
65	109	109	107	105	102	99.4	95.6	91.5	88.1	82.6	76.2	70.5	65.1	61.2	53.3	49.0	45.4	46.3	42.2
70	106	105	104	102	98.8	95.5	91.6	87.2	82.4	77.1	71.4	64.8	58.1	52.2	46.5	40.6	36.4	32.4	30.8
75	102	102	99.9	97.8	94.8	91.5	87.3	82.8	77.5	72.0	65.5	58.9	52.9	45.0	37.8	33.0	27.5	24.0	21.5
80	98.1	97.5	95.8	93.8	90.8	87.4	83.1	78.4	72.9	67.1	60.4	53.6	46.2	39.3	32.2	24.6	19.4	14.6	12.4
85	93.9	93.3	91.7	89.7	86.6	83.2	78.8	74.0	68.4	62.4	55.7	48.7	41.2	33.9	26.4	19.5	13.5	8.66	6.25
90	89.3	88.9	87.3	85.3	82.2	78.9	74.5	69.8	64.2	58.2	51.6	44.6	37.1	29.9	22.7	16.0	10.4	6.25	2.58
95	84.9	84.6	82.9	81.0	78.0	74.7	70.4	65.8	60.4	54.5	48.0	41.3	34.2	27.1	20.5	14.4	9.41	6.12	5.52
100	80.5	80.1	78.5	76.6	73.7	70.6	66.5	62.0	56.7	51.1	44.9	38.4	31.6	25.1	18.7	13.1	8.03	5.27	5.02
105	75.6	75.2	73.7	72.0	69.2	66.1	62.2	57.9	52.9	47.5	41.6	35.4	29.0	22.7	16.4	10.4	5.75	4.43	4.29
110	70.3	70.0	68.6	66.9	64.3	61.4	57.6	53.6	48.8	43.7	38.0	32.1	25.6	19.1	12.6	7.21	3.72	3.55	3.52
115	64.6	64.3	63.0	61.5	59.0	56.3	52.7	48.8	44.2	39.2	33.4	27.3	20.9	14.6	8.61	3.68	2.90	2.84	2.84
120	58.3	58.1	56.9	55.4	52.9	50.3	46.7	42.8	38.2	33.1	27.5	21.7	15.7	9.77	4.24	2.23	2.25	2.28	2.24
125	50.5	50.3	49.1	47.7	45.3	42.7	39.3	35.5	31.1	26.4	21.2	15.7	10.1	4.75	1.66	1.73	1.83	1.88	1.88
130	41.4	41.3	40.2	38.9	36.7	34.3	31.1	27.6	23.6	19.2	14.5	9.54	4.52	1.28	1.23	1.35	1.44	1.48	1.49
135	31.9	31.8	30.8	29.6	27.6	25.5	22.6	19.5	15.7	11.7	7.35	3.22	0.93	0.93	1.00	1.05	1.11	1.18	1.20
140	22.0	21.9	21.0	20.1	18.3	16.4	13.8	11.1	7.80	4.45	1.18	0.70	0.64	0.65	0.67	0.70	0.73	0.76	0.83
145	11.7	11.8	11.1	10.3	8.80	7.26	5.15	2.95	0.97	0.71	0.64	0.62	0.60	0.59	0.59	0.59	0.60	0.59	0.63
150	2.14	2.19	1.78	1.36	0.92	0.76	0.71	0.67	0.64	0.62	0.61	0.60	0.60	0.58	0.58	0.57	0.57	0.56	0.58
155	0.71	0.70	0.68	0.67	0.66	0.65	0.64	0.63	0.62	0.62	0.61	0.60	0.60	0.58	0.57	0.57	0.57	0.57	0.58
160	0.66	0.65	0.64	0.64	0.64	0.64	0.64	0.63	0.62	0.62	0.61	0.62	0.60	0.60	0.59	0.59	0.59	0.59	0.60
165	0.64	0.64	0.63	0.63	0.63	0.63	0.64	0.63	0.63	0.63	0.62	0.63	0.62	0.62	0.61	0.61	0.61	0.61	0.62
170	0.65	0.64	0.64	0.64	0.64	0.64	0.65	0.65	0.64	0.64	0.64	0.63	0.62	0.62	0.62	0.62	0.62	0.62	0.63
175	0.65	0.65	0.64	0.65	0.65	0.64	0.66	0.65	0.64	0.64	0.64	0.63	0.63	0.63	0.63	0.62	0.63	0.63	0.63
180	0.66	0.66	0.66	0.66	0.65	0.65	0.66	0.65	0.64	0.64	0.64	0.64	0.63	0.62	0.62	0.62	0.63	0.64	0.64

C Range: 0 - 360DEG
 C Interval: 5.0DEG
 Test Speed: HIGH
 Temperature:25DEG
 Operators:yechihong
 Test Date:2019-05-25

γ Range: 0 - 180DEG
 γ Interval: 0.5DEG
 Test System:EVERFINE GO-2000A_V1 SYSTEM V2.0.272
 Humidity:70%
 Test Distance:8.425m [K=1.0000]
 Remarks:

LUMINOUS DISTRIBUTION INTENSITY DATA

Test:U:120.7V I:0.1321A P:15.81W PF:0.9909 Lamp Flux:703.448x1 lm		
NAME: RNS5161200L30D1SN	TYPE:	WEIGHT:
DIM.:	SPEC.:	SERIAL No.:2019-05-25-01
MFR.: AFX	SUR.:0.075MX0.335M	PROTECTION ANGLE:

Table--2

UNIT: cd

C(DEG) γ (DEG)	95	100	105	110	115	120	125	130	135	140	145	150	155	160	165	170	175	180	185
0	123	122	122	122	122	122	122	122	122	122	122	122	122	122	122	122	122	128	128
5	122	122	122	122	122	122	122	122	122	122	122	122	122	122	122	122	122	128	128
10	120	120	120	120	120	120	120	121	121	121	121	121	121	122	122	122	122	128	127
15	118	118	118	118	118	118	119	119	119	120	120	120	121	121	121	121	121	127	127
20	114	114	114	114	115	115	116	116	117	118	118	119	119	120	120	120	120	127	126
25	109	109	110	110	111	112	113	113	114	115	116	117	118	119	119	119	120	126	125
30	104	104	104	105	107	107	109	110	111	113	114	115	116	117	118	119	119	125	125
35	96.9	97.3	98.2	99.2	101	102	105	106	108	110	111	113	114	116	116	117	117	125	123
40	90.4	92.1	94.0	92.9	94.7	96.8	99.2	102	104	106	108	110	112	113	114	115	116	122	122
45	81.1	82.1	85.5	87.2	88.3	90.8	94.8	96.6	99.5	102	105	107	109	111	112	113	114	120	120
50	72.2	73.6	75.6	77.8	81.1	84.4	87.9	93.4	94.8	98.2	101	104	106	108	110	111	112	118	118
55	63.3	66.4	68.9	71.1	73.8	77.4	81.6	85.7	91.4	93.7	97.3	100	103	106	107	109	111	116	115
60	53.9	54.8	60.0	62.8	65.9	70.5	75.6	80.2	85.0	89.1	93.2	96.7	99.8	102	105	106	107	113	113
65	44.8	45.9	53.4	54.6	58.7	63.6	69.3	75.1	79.8	84.7	89.0	92.8	96.3	99.0	101	103	104	110	109
70	32.8	34.9	39.3	46.4	51.0	57.2	63.3	70.6	75.1	79.8	84.6	88.7	92.4	95.4	97.9	99.7	101	107	106
75	24.1	27.5	31.7	37.3	44.2	51.4	57.6	63.7	69.7	75.2	80.2	84.6	88.5	91.7	94.3	96.1	97.4	103	102
80	14.2	18.6	24.8	30.9	38.1	45.3	52.3	58.8	65.0	70.7	75.9	80.4	84.5	87.8	90.5	92.4	93.7	99.4	98.7
85	8.46	12.9	18.7	25.7	33.2	40.4	47.6	54.2	60.5	66.3	71.7	76.3	80.4	83.8	86.6	88.5	89.9	95.3	94.6
90	6.02	9.95	15.4	22.0	29.1	36.2	43.4	50.0	56.3	62.0	67.4	72.0	76.0	79.4	82.2	84.2	85.5	90.8	90.1
95	6.25	9.11	13.7	19.6	26.2	33.0	39.9	46.3	52.5	58.1	63.4	67.9	72.0	75.3	78.1	80.0	81.3	86.4	85.7
100	5.29	7.42	12.0	17.8	23.9	30.2	36.7	42.8	48.8	54.2	59.3	63.8	67.8	71.1	73.8	75.8	77.1	81.9	81.2
105	4.41	4.91	8.92	14.5	21.1	27.5	33.6	39.4	45.1	50.3	55.2	59.5	63.3	66.4	69.1	70.9	72.2	76.9	76.1
110	3.58	3.61	5.17	10.4	16.5	23.0	29.6	35.6	41.2	46.2	50.8	54.9	58.5	61.5	64.0	65.8	67.1	71.4	70.7
115	2.83	2.86	2.99	5.66	11.5	17.6	23.8	29.9	35.8	41.1	45.9	49.9	53.5	56.4	58.8	60.5	61.7	65.7	65.1
120	2.26	2.28	2.27	2.31	5.94	11.7	17.7	23.4	28.9	34.0	38.9	43.1	46.9	49.9	52.5	54.2	55.4	59.2	58.5
125	1.87	1.86	1.83	1.78	1.78	5.42	11.0	16.4	21.7	26.4	31.0	34.9	38.5	41.5	44.1	45.8	47.1	50.6	49.8
130	1.44	1.46	1.44	1.39	1.33	1.43	4.17	8.95	13.9	18.3	22.7	26.3	29.8	32.5	34.9	36.5	37.7	40.5	39.9
135	1.15	1.15	1.08	1.08	1.01	0.98	1.00	1.85	5.79	9.89	13.9	17.3	20.5	23.0	25.3	26.8	28.0	30.2	29.6
140	0.73	0.74	0.67	0.68	0.68	0.70	0.74	0.81	0.93	1.98	5.09	8.05	10.9	13.2	15.3	16.6	17.8	19.5	18.9
145	0.60	0.60	0.58	0.58	0.59	0.62	0.65	0.68	0.73	0.78	0.85	1.00	1.98	3.49	5.26	6.39	7.40	8.54	8.01
150	0.56	0.56	0.56	0.56	0.57	0.57	0.59	0.61	0.64	0.66	0.69	0.71	0.73	0.76	0.78	0.80	0.81	0.69	0.69
155	0.58	0.57	0.57	0.57	0.57	0.57	0.57	0.58	0.59	0.60	0.62	0.63	0.64	0.66	0.67	0.67	0.68	0.60	0.60
160	0.59	0.59	0.59	0.59	0.59	0.59	0.59	0.59	0.59	0.59	0.59	0.59	0.60	0.61	0.62	0.62	0.63	0.60	0.61
165	0.61	0.62	0.61	0.61	0.61	0.61	0.61	0.61	0.62	0.61	0.61	0.61	0.61	0.62	0.62	0.62	0.62	0.62	0.62
170	0.63	0.63	0.62	0.63	0.63	0.63	0.63	0.62	0.62	0.62	0.62	0.63	0.62	0.63	0.63	0.63	0.64	0.64	0.64
175	0.63	0.63	0.64	0.64	0.64	0.64	0.63	0.64	0.64	0.64	0.63	0.64	0.64	0.64	0.64	0.64	0.64	0.66	0.66
180	0.64	0.64	0.63	0.64	0.65	0.64	0.64	0.65	0.65	0.65	0.65	0.64	0.65	0.65	0.65	0.65	0.65	0.66	0.66

C Range: 0 - 360DEG
 C Interval: 5.0DEG
 Test Speed: HIGH
 Temperature:25DEG
 Operators:yechihong
 Test Date:2019-05-25

γ Range: 0 - 180DEG
 γ Interval: 0.5DEG
 Test System:EVERFINE GO-2000A_V1 SYSTEM V2.0.272
 Humidity:70%
 Test Distance:8.425m [K=1.0000]
 Remarks:

LUMINOUS DISTRIBUTION INTENSITY DATA

Test:U:120.7V I:0.1321A P:15.81W PF:0.9909 Lamp Flux:703.448x1 lm		
NAME: RNS5161200L30D1SN	TYPE:	WEIGHT:
DIM.:	SPEC.:	SERIAL No.:2019-05-25-01
MFR.: AFX	SUR.:0.075MX0.335M	PROTECTION ANGLE:

Table--3

UNIT: cd

C(DEG) γ (DEG)	190	195	200	205	210	215	220	225	230	235	240	245	250	255	260	265	270	275	280
0	127	127	126	126	125	125	125	124	124	124	124	124	123	123	123	123	123	123	122
5	127	127	126	126	125	125	125	124	124	124	124	123	123	123	123	122	122	122	122
10	127	126	126	125	125	124	124	123	123	123	122	122	122	121	121	121	121	121	120
15	126	126	125	124	124	123	123	122	121	121	120	120	119	119	119	118	118	118	118
20	126	125	124	123	123	122	121	120	119	118	118	117	116	116	115	115	115	114	114
25	125	124	123	122	121	120	119	117	116	115	114	113	112	111	111	110	110	110	110
30	124	123	122	121	119	118	116	114	113	111	110	108	107	106	105	104	104	104	104
35	123	121	120	119	117	115	113	111	109	107	105	103	101	99.7	98.8	97.8	97.5	97.4	97.7
40	121	120	118	116	114	112	110	107	105	102	99.3	96.8	94.8	92.8	91.5	90.4	90.1	89.9	90.5
45	119	117	116	114	112	109	106	103	99.9	96.6	93.5	90.2	89.5	85.1	85.3	82.2	84.4	84.5	82.5
50	117	115	113	111	108	105	102	98.2	94.6	90.6	87.1	83.3	79.9	76.7	74.6	73.0	72.4	72.4	73.6
55	114	112	111	108	105	101	97.6	93.3	89.1	85.5	80.2	75.8	72.2	68.0	66.8	63.3	65.3	63.2	64.7
60	111	110	107	104	101	97.2	93.1	88.4	83.6	78.2	73.1	67.9	63.8	58.9	55.5	53.1	52.3	53.9	54.5
65	108	106	104	101	97.3	93.1	88.5	83.3	77.9	72.0	66.2	60.3	56.2	52.4	48.0	45.3	42.1	44.0	45.8
70	105	103	100	96.9	93.2	88.7	83.8	78.3	72.4	65.9	59.5	52.8	47.8	41.2	38.0	32.2	31.3	32.3	36.8
75	101	99.1	96.5	93.0	89.1	84.2	79.2	73.2	67.0	60.6	53.2	46.1	39.0	32.5	28.4	24.7	22.0	22.7	26.5
80	97.5	95.2	92.6	88.9	84.9	79.9	74.7	68.5	62.0	54.8	47.5	39.9	32.6	25.2	19.2	15.5	12.6	14.2	18.7
85	93.4	91.0	88.4	84.6	80.6	75.6	70.2	64.0	57.3	50.0	42.7	35.0	27.4	19.9	13.5	8.35	6.10	7.94	12.9
90	88.9	86.6	83.9	80.2	76.1	71.2	65.8	59.6	53.1	45.9	38.6	31.0	23.7	16.6	10.6	6.31	2.33	6.07	10.1
95	84.5	82.2	79.6	76.0	72.0	67.1	61.8	55.8	49.5	42.5	35.5	28.3	21.4	14.9	9.87	6.55	5.84	6.69	9.63
100	80.0	77.8	75.2	71.7	67.8	63.0	57.9	52.1	46.1	39.4	32.7	26.0	19.6	13.6	8.59	6.13	5.81	6.20	8.56
105	75.0	72.9	70.4	66.9	63.3	58.6	53.8	48.2	42.5	36.3	30.0	23.3	16.6	10.7	6.39	5.45	5.33	5.45	6.58
110	69.7	67.6	65.2	61.9	58.4	54.1	49.5	44.2	38.6	32.3	25.6	18.8	12.6	7.05	5.06	4.84	4.78	4.72	4.89
115	64.1	62.1	59.9	56.7	53.3	49.0	44.2	38.7	32.8	26.4	20.2	13.8	7.92	4.52	4.32	4.24	4.19	4.12	4.13
120	57.5	55.5	53.2	49.8	46.2	41.7	36.9	31.4	25.9	20.0	14.1	8.12	3.98	3.78	3.72	3.66	3.66	3.66	3.65
125	48.8	46.7	44.4	41.0	37.6	33.3	28.9	23.8	18.6	12.9	7.57	3.40	3.30	3.21	3.19	3.16	3.18	3.19	3.20
130	38.9	37.0	34.9	31.8	28.6	24.5	20.4	15.6	10.8	5.68	2.72	2.70	2.72	2.71	2.72	2.71	2.72	2.73	2.72
135	28.7	26.9	25.0	22.0	19.0	15.3	11.5	7.10	3.10	1.97	2.06	2.13	2.21	2.24	2.28	2.30	2.35	2.36	2.34
140	18.1	16.4	14.6	11.9	9.30	5.93	2.74	1.36	1.43	1.54	1.66	1.73	1.77	1.83	1.90	1.92	1.95	1.94	1.91
145	7.34	5.91	4.39	2.27	1.14	0.84	0.89	0.95	1.04	1.14	1.23	1.32	1.42	1.48	1.53	1.57	1.58	1.55	1.52
150	0.69	0.66	0.64	0.63	0.62	0.63	0.67	0.72	0.79	0.86	0.94	1.00	1.07	1.11	1.16	1.19	1.20	1.19	1.17
155	0.59	0.59	0.59	0.57	0.57	0.57	0.57	0.59	0.63	0.67	0.72	0.75	0.81	0.83	0.86	0.88	0.90	0.89	0.88
160	0.59	0.59	0.58	0.57	0.57	0.57	0.57	0.57	0.57	0.57	0.58	0.61	0.63	0.63	0.65	0.66	0.67	0.67	0.67
165	0.61	0.61	0.59	0.60	0.59	0.59	0.58	0.58	0.58	0.58	0.58	0.57	0.59	0.58	0.59	0.59	0.60	0.61	0.61
170	0.63	0.63	0.62	0.62	0.62	0.61	0.61	0.60	0.60	0.60	0.60	0.59	0.60	0.60	0.59	0.60	0.61	0.61	0.62
175	0.65	0.64	0.65	0.64	0.64	0.64	0.63	0.63	0.63	0.62	0.62	0.62	0.62	0.62	0.62	0.62	0.62	0.63	0.64
180	0.66	0.65	0.64	0.65	0.65	0.64	0.64	0.65	0.64	0.63	0.64	0.63	0.63	0.62	0.62	0.64	0.64	0.64	0.64

C Range: 0 - 360DEG
 C Interval: 5.0DEG
 Test Speed: HIGH
 Temperature:25DEG
 Operators:yechihong
 Test Date:2019-05-25

γ Range: 0 - 180DEG
 γ Interval: 0.5DEG
 Test System:EVERFINE GO-2000A_V1 SYSTEM V2.0.272
 Humidity:70%
 Test Distance:8.425m [K=1.0000]
 Remarks:

LUMINOUS DISTRIBUTION INTENSITY DATA

Test:U:120.7V I:0.1321A P:15.81W PF:0.9909 Lamp Flux:703.448x1 lm		
NAME: RNS5161200L30D1SN	TYPE:	WEIGHT:
DIM.:	SPEC.:	SERIAL No.:2019-05-25-01
MFR.: AFX	SUR.:0.075MX0.335M	PROTECTION ANGLE:

Table--4

UNIT: cd

C(DEG) γ (DEG)	285	290	295	300	305	310	315	320	325	330	335	340	345	350	355				
0	122	122	122	122	122	122	122	122	122	122	122	122	122	122	122				
5	122	122	122	122	122	122	122	122	122	122	122	122	122	122	122				
10	120	120	120	120	120	121	121	121	121	121	121	121	122	122	122				
15	118	118	118	118	118	119	119	119	120	120	120	121	121	121	121				
20	114	115	115	115	116	116	117	118	118	119	119	120	120	120	121				
25	110	110	111	112	112	113	114	115	116	117	118	118	119	119	120				
30	105	105	106	107	108	110	111	112	114	115	116	117	118	118	119				
35	98.4	99.5	101	102	104	106	107	109	111	113	114	115	116	117	118				
40	91.3	92.8	94.5	96.5	98.6	101	103	106	108	110	112	113	115	115	116				
45	84.9	85.9	88.3	90.4	93.2	96.2	99.1	102	105	107	109	111	112	114	114				
50	75.2	77.8	81.5	84.2	87.4	91.1	94.5	97.9	101	104	106	108	110	111	112				
55	66.4	69.6	73.2	77.3	81.4	85.6	89.5	93.5	97.0	100	103	106	107	109	110				
60	60.3	61.3	67.6	70.4	75.1	80.0	84.5	89.0	93.1	96.8	99.8	103	105	106	107				
65	48.8	53.4	58.1	63.6	69.0	74.6	79.7	84.6	88.9	92.9	96.3	99.2	101	103	104				
70	40.0	46.1	50.8	57.1	63.2	69.3	74.7	80.0	84.7	89.0	92.5	95.6	98.0	99.7	101				
75	32.1	37.5	44.2	51.0	57.6	64.0	69.9	75.5	80.4	84.9	88.6	91.8	94.3	96.1	97.2				
80	24.2	31.5	38.3	45.5	52.4	59.1	65.3	71.1	76.2	80.7	84.6	87.9	90.4	92.3	93.4				
85	19.0	26.3	33.4	40.7	47.7	54.5	60.8	66.7	71.8	76.6	80.4	83.8	86.3	88.3	89.4				
90	15.8	22.6	29.6	36.7	43.7	50.5	56.7	62.6	67.7	72.4	76.3	79.5	82.1	84.0	85.1				
95	14.5	20.5	27.0	33.8	40.5	47.1	53.1	58.8	63.9	68.4	72.2	75.5	77.9	79.9	80.9				
100	13.3	18.9	24.9	31.3	37.7	43.9	49.8	55.3	60.1	64.6	68.2	71.4	73.7	75.6	76.6				
105	10.8	16.6	22.7	28.8	34.9	40.8	46.3	51.6	56.2	60.4	63.9	66.9	69.3	71.0	72.0				
110	7.79	13.2	19.2	25.6	31.6	37.4	42.6	47.6	52.0	56.0	59.3	62.2	64.3	66.1	66.9				
115	4.56	9.44	15.1	21.1	27.0	32.9	38.2	43.2	47.4	51.2	54.3	57.1	59.1	60.7	61.5				
120	3.66	5.42	10.5	16.1	21.6	27.2	32.4	37.3	41.5	45.5	48.5	51.3	53.3	54.9	55.6				
125	3.13	3.09	5.69	10.7	15.8	21.0	25.8	30.5	34.5	38.2	41.2	44.0	45.9	47.5	48.2				
130	2.67	2.62	2.60	5.38	9.77	14.5	18.9	23.2	26.9	30.4	33.2	35.7	37.5	39.0	39.5				
135	2.26	2.20	2.07	1.96	3.91	7.86	11.6	15.6	19.0	22.2	24.7	27.0	28.6	29.9	30.4				
140	1.84	1.77	1.66	1.55	1.43	1.83	4.71	7.90	10.8	13.8	16.0	18.0	19.4	20.6	21.0				
145	1.48	1.41	1.31	1.22	1.11	1.03	0.94	1.25	3.09	5.41	7.29	9.03	10.2	11.2	11.4				
150	1.14	1.08	1.02	0.95	0.86	0.79	0.71	0.67	0.63	0.62	0.68	1.01	1.50	2.14	2.26				
155	0.84	0.82	0.77	0.73	0.68	0.65	0.61	0.60	0.59	0.59	0.59	0.59	0.59	0.60	0.61				
160	0.65	0.65	0.62	0.61	0.61	0.61	0.61	0.61	0.60	0.60	0.60	0.60	0.60	0.59	0.60				
165	0.61	0.61	0.61	0.61	0.62	0.62	0.61	0.61	0.61	0.62	0.61	0.61	0.62	0.61	0.61				
170	0.62	0.62	0.62	0.62	0.62	0.63	0.63	0.63	0.63	0.63	0.63	0.63	0.63	0.62	0.63				
175	0.63	0.64	0.64	0.63	0.64	0.64	0.64	0.65	0.64	0.65	0.65	0.65	0.65	0.64	0.65				
180	0.64	0.64	0.65	0.64	0.64	0.65	0.64	0.65	0.65	0.65	0.65	0.65	0.65	0.65	0.65				

C Range: 0 - 360DEG
 C Interval: 5.0DEG
 Test Speed: HIGH
 Temperature:25DEG
 Operators:yechihong
 Test Date:2019-05-25

γ Range: 0 - 180DEG
 γ Interval: 0.5DEG
 Test System:EVERFINE GO-2000A_V1 SYSTEM V2.0.272
 Humidity:70%
 Test Distance:8.425m [K=1.0000]
 Remarks:

Photometric Data Table [cd]

G/C	0.0	5.0	10.0	15.0	20.0	25.0	30.0	35.0	40.0	45.0
0.0	128.1	127.6	127.0	126.6	126.1	125.7	125.4	125.1	124.8	124.4
2.5	128.1	127.5	127.0	126.5	126.1	125.6	125.3	125.0	124.6	124.3
5.0	128.1	127.4	126.9	126.4	125.9	125.4	125.1	124.7	124.4	124.1
7.5	127.9	127.3	126.7	126.2	125.7	125.2	124.7	124.4	124.0	123.6
10.0	127.8	127.1	126.5	126.0	125.4	124.9	124.4	123.9	123.4	123.0
12.5	127.5	126.9	126.3	125.6	125.0	124.5	123.9	123.3	122.7	122.3
15.0	127.3	126.6	125.9	125.3	124.6	124.0	123.3	122.6	121.9	121.3
17.5	126.9	126.3	125.6	124.9	124.1	123.4	122.6	121.8	121.0	120.3
20.0	126.5	125.9	125.1	124.4	123.5	122.7	121.8	120.9	120.0	119.2
22.5	126.1	125.5	124.6	123.8	122.9	122.0	120.9	120.0	118.8	117.9
25.0	125.6	125.0	124.0	123.2	122.2	121.2	119.9	118.9	117.6	116.4
27.5	125.2	124.5	123.6	122.6	121.5	120.3	118.9	117.7	116.1	114.9
30.0	124.7	124.1	123.1	122.0	120.7	119.5	117.9	116.4	114.7	113.1
32.5	124.1	123.5	122.4	121.3	119.9	118.5	116.8	115.1	113.1	111.3
35.0	123.5	122.9	121.7	120.6	119.0	117.4	115.6	113.7	111.5	109.5
37.5	122.7	122.1	120.9	119.7	118.0	116.3	114.3	112.3	109.9	107.6
40.0	121.9	121.3	120.0	118.7	117.0	115.1	112.9	110.7	108.1	105.6
42.5	121.0	120.4	119.0	117.7	115.9	113.9	111.6	109.1	106.2	103.7
45.0	120.0	119.3	118.0	116.5	114.6	112.5	109.9	107.3	104.3	101.3
47.5	118.9	118.2	116.8	115.3	113.2	111.0	108.3	105.4	102.2	98.98
50.0	117.7	117.1	115.6	114.1	111.9	109.5	106.6	103.5	100.2	96.67
52.5	116.6	115.9	114.4	112.8	110.4	107.9	104.8	101.6	98.01	94.36
55.0	115.3	114.7	113.2	111.4	109.0	106.3	103.1	99.67	95.73	92.99
57.5	113.9	113.3	111.7	110.0	107.5	104.8	101.4	97.71	93.48	91.18
60.0	112.4	111.8	110.2	108.4	105.8	103.0	99.50	95.73	91.27	86.72
62.5	110.9	110.3	108.7	106.8	104.2	101.2	97.53	93.63	89.03	84.22
65.0	109.3	108.7	107.1	105.1	102.4	99.37	95.56	91.46	88.07	82.61
67.5	107.6	107.0	105.3	103.4	100.6	97.46	93.55	89.32	85.19	79.25
70.0	105.9	105.3	103.6	101.6	98.76	95.53	91.56	87.20	82.38	77.12
72.5	104.0	103.4	101.8	99.72	96.78	93.57	89.48	85.05	79.82	75.66
75.0	102.2	101.6	99.86	97.84	94.82	91.55	87.34	82.84	77.52	72.02
77.5	100.2	99.59	97.89	95.87	92.83	89.57	85.25	80.64	75.16	69.37
80.0	98.07	97.53	95.84	93.81	90.77	87.43	83.09	78.42	72.93	67.07
82.5	95.98	95.43	93.78	91.73	88.66	85.27	80.89	76.19	70.63	64.71
85.0	93.87	93.35	91.70	89.67	86.64	83.18	78.82	74.04	68.44	62.42
87.5	91.62	91.15	89.50	87.49	84.46	81.01	76.69	71.93	66.33	60.36
90.0	89.33	88.88	87.26	85.26	82.25	78.86	74.51	69.79	64.23	58.24
92.5	87.11	86.70	85.09	83.11	80.11	76.75	72.46	67.78	62.24	56.31
95.0	84.94	84.56	82.90	81.00	78.00	74.72	70.45	65.83	60.39	54.53
97.5	82.71	82.31	80.71	78.84	75.87	72.63	68.45	63.87	58.53	52.79
100.0	80.47	80.06	78.52	76.64	73.75	70.56	66.46	62.00	56.71	51.08
102.5	78.12	77.72	76.19	74.38	71.51	68.38	64.36	59.97	54.81	49.36
105.0	75.57	75.22	73.70	71.96	69.21	66.15	62.23	57.94	52.88	47.53
107.5	72.99	72.67	71.21	69.49	66.81	63.82	59.95	55.77	50.86	45.65
110.0	70.26	69.98	68.57	66.91	64.30	61.38	57.60	53.57	48.78	43.71
112.5	67.43	67.19	65.81	64.23	61.69	58.87	55.19	51.25	46.61	41.61
115.0	64.56	64.30	62.99	61.48	58.99	56.26	52.69	48.81	44.20	39.15
117.5	61.57	61.32	60.07	58.57	56.15	53.47	49.93	46.01	41.37	36.30
120.0	58.32	58.08	56.86	55.36	52.93	50.26	46.70	42.78	38.16	33.13
122.5	54.63	54.40	53.15	51.71	49.29	46.64	43.10	39.24	34.70	29.84
125.0	50.49	50.30	49.08	47.68	45.29	42.72	39.25	35.53	31.08	26.40
127.5	46.06	45.89	44.75	43.37	41.08	38.60	35.25	31.64	27.36	22.92
130.0	41.42	41.30	40.19	38.92	36.71	34.35	31.12	27.64	23.58	19.24
132.5	36.71	36.59	35.54	34.33	32.23	29.97	26.90	23.59	19.65	15.48
135.0	31.88	31.78	30.79	29.63	27.64	25.51	22.59	19.46	15.70	11.74
137.5	27.07	26.87	25.96	24.88	22.99	20.99	18.23	15.25	11.75	8.049
140.0	21.95	21.87	21.03	20.05	18.27	16.39	13.80	11.05	7.798	4.451
142.5	16.83	16.83	16.05	15.16	13.52	11.80	9.405	6.905	4.006	1.272
145.0	11.75	11.78	11.10	10.28	8.798	7.261	5.148	2.949	0.9734	0.7102
147.5	6.778	6.841	6.261	5.548	4.260	2.947	1.347	0.7646	0.6749	0.6473
150.0	2.141	2.187	1.777	1.356	0.9155	0.7601	0.7064	0.6743	0.6383	0.6201
152.5	0.7699	0.7510	0.7335	0.7243	0.7063	0.6922	0.6700	0.6427	0.6247	0.6202
155.0	0.7067	0.7014	0.6836	0.6743	0.6566	0.6518	0.6384	0.6293	0.6247	0.6201
157.5	0.6837	0.6654	0.6519	0.6562	0.6473	0.6427	0.6384	0.6338	0.6201	0.6246
160.0	0.6564	0.6517	0.6386	0.6382	0.6383	0.6382	0.6381	0.6337	0.6202	0.6202
162.5	0.6518	0.6473	0.6383	0.6427	0.6339	0.6338	0.6428	0.6338	0.6292	0.6203
165.0	0.6429	0.6383	0.6338	0.6338	0.6338	0.6293	0.6382	0.6339	0.6337	0.6292
167.5	0.6383	0.6428	0.6338	0.6382	0.6291	0.6338	0.6339	0.6338	0.6292	0.6292
170.0	0.6472	0.6383	0.6383	0.6383	0.6427	0.6384	0.6473	0.6473	0.6382	0.6383
172.5	0.6429	0.6428	0.6428	0.6428	0.6383	0.6473	0.6475	0.6563	0.6384	0.6383
175.0	0.6518	0.6520	0.6430	0.6473	0.6473	0.6429	0.6564	0.6474	0.6383	0.6427
177.5	0.6564	0.6564	0.6474	0.6473	0.6473	0.6473	0.6473	0.6518	0.6383	0.6427
180.0	0.6609	0.6609	0.6564	0.6564	0.6473	0.6519	0.6564	0.6473	0.6383	0.6383

C Range: 0 - 360DEG
 C Interval: 5.0DEG
 Test Speed: HIGH
 Temperature: 25DEG
 Operators: yechihong
 Test Date: 2019-05-25

γ Range: 0 - 180DEG
 γ Interval: 0.5DEG
 Test System: EVERFINE GO-2000A_V1 SYSTEM V2.0.272
 Humidity: 70%
 Test Distance: 8.425m [K=1.0000]
 Remarks:

Photometric Data Table [cd]

G/C	50.0	55.0	60.0	65.0	70.0	75.0	80.0	85.0	90.0	95.0
0.0	124.2	124.0	123.8	123.5	123.4	123.2	123.0	122.9	122.7	122.5
2.5	124.0	123.8	123.5	123.4	123.2	123.0	122.8	122.7	122.5	122.4
5.0	123.7	123.4	123.1	123.0	122.7	122.6	122.4	122.2	122.1	122.0
7.5	123.2	122.9	122.5	122.3	122.0	121.8	121.7	121.5	121.4	121.3
10.0	122.5	122.2	121.8	121.4	121.1	121.0	120.7	120.5	120.4	120.3
12.5	121.6	121.3	120.8	120.4	120.0	119.8	119.5	119.3	119.1	119.1
15.0	120.7	120.1	119.5	119.1	118.6	118.3	117.9	117.8	117.6	117.6
17.5	119.5	118.9	118.2	117.6	117.0	116.7	116.2	116.1	115.8	115.9
20.0	118.2	117.4	116.6	115.9	115.2	114.8	114.3	114.0	113.8	113.9
22.5	116.8	115.8	114.8	114.0	113.2	112.6	112.1	111.8	111.6	111.6
25.0	115.1	114.0	112.9	112.1	111.0	110.5	110.0	109.4	109.6	109.2
27.5	113.4	112.1	110.7	109.8	108.5	107.9	107.6	106.7	106.8	106.6
30.0	111.4	110.2	108.4	107.1	105.8	104.9	104.0	103.6	103.4	103.5
32.5	109.4	108.0	105.9	104.4	102.9	101.9	100.9	100.5	100.2	100.3
35.0	107.4	105.4	103.3	101.6	99.89	98.73	97.59	97.05	96.70	96.89
37.5	106.0	102.9	100.6	98.63	96.69	95.55	94.84	93.41	93.05	94.55
40.0	102.8	100.3	97.67	97.48	93.36	92.53	90.96	92.93	91.94	90.37
42.5	100.5	97.62	94.65	92.20	91.71	88.14	87.32	88.73	87.09	86.63
45.0	98.10	94.85	94.27	89.35	89.19	85.80	83.96	81.47	80.74	81.14
47.5	96.44	92.12	88.39	86.27	82.26	79.93	77.82	76.77	76.15	77.75
50.0	92.82	90.75	85.20	84.36	78.28	75.98	74.22	72.20	72.08	72.25
52.5	90.14	86.05	81.84	77.88	74.57	72.03	69.50	68.10	66.69	67.84
55.0	87.45	82.97	78.83	74.19	70.05	68.49	65.54	63.32	63.37	63.31
57.5	84.49	79.84	74.94	77.30	65.85	62.22	60.87	60.86	57.73	60.73
60.0	81.65	76.67	71.48	66.72	62.61	58.18	57.04	53.62	51.70	53.87
62.5	78.86	74.77	70.27	62.77	57.50	53.22	53.34	52.53	47.72	48.90
65.0	76.18	70.53	65.11	61.22	53.35	48.95	45.35	46.32	42.21	44.78
67.5	73.47	67.57	61.15	57.01	49.24	45.77	42.36	38.41	36.10	36.95
70.0	71.38	64.77	58.06	52.18	46.49	40.56	36.38	32.40	30.79	32.76
72.5	68.73	61.67	55.39	48.12	41.33	35.50	30.59	27.21	25.65	27.86
75.0	65.55	58.91	52.92	44.97	37.79	33.03	27.53	24.01	21.50	24.12
77.5	62.92	56.22	48.92	41.81	35.07	28.64	22.11	18.33	16.21	17.85
80.0	60.43	53.57	46.23	39.27	32.22	24.58	19.35	14.62	12.45	14.24
82.5	58.03	51.09	43.65	36.28	28.78	22.26	15.59	11.31	9.070	10.85
85.0	55.71	48.67	41.23	33.89	26.41	19.47	13.51	8.656	6.255	8.462
87.5	53.61	46.57	39.04	31.68	24.30	17.44	11.56	6.970	4.497	6.776
90.0	51.58	44.61	37.14	29.88	22.66	15.99	10.38	6.252	2.581	6.021
92.5	49.69	42.83	35.54	28.36	21.42	15.06	9.816	6.202	5.150	6.220
95.0	48.02	41.28	34.16	27.11	20.46	14.42	9.413	6.118	5.523	6.251
97.5	46.43	39.86	32.89	26.10	19.64	13.80	8.945	5.803	5.375	5.921
100.0	44.86	38.39	31.64	25.07	18.73	13.06	8.033	5.272	5.017	5.295
102.5	43.23	36.90	30.34	23.98	17.77	11.86	6.960	4.817	4.652	4.835
105.0	41.56	35.42	29.04	22.74	16.37	10.39	5.745	4.430	4.293	4.407
107.5	39.81	33.88	27.53	21.06	14.54	8.850	4.446	3.990	3.893	3.964
110.0	38.01	32.12	25.62	19.08	12.60	7.206	3.718	3.553	3.523	3.584
112.5	35.90	29.92	23.35	16.86	10.66	5.444	3.293	3.177	3.175	3.198
115.0	33.39	27.33	20.88	14.61	8.605	3.675	2.903	2.837	2.839	2.834
117.5	30.54	24.59	18.30	12.21	6.439	2.623	2.581	2.580	2.550	2.556
120.0	27.54	21.70	15.69	9.771	4.243	2.227	2.246	2.277	2.237	2.258
122.5	24.36	18.78	12.95	7.250	2.237	1.987	2.064	2.094	2.065	2.077
125.0	21.17	15.74	10.15	4.753	1.657	1.728	1.826	1.878	1.879	1.865
127.5	17.84	12.70	7.315	2.335	1.414	1.520	1.612	1.661	1.671	1.638
130.0	14.46	9.537	4.518	1.276	1.232	1.353	1.435	1.479	1.491	1.443
132.5	10.89	6.336	1.887	1.117	1.073	1.194	1.263	1.317	1.377	1.286
135.0	7.350	3.222	0.9253	0.9322	0.9960	1.050	1.114	1.176	1.195	1.150
137.5	4.071	0.9143	0.7336	0.7693	0.7978	0.8646	0.8966	0.9858	1.033	0.9715
140.0	1.181	0.7014	0.6429	0.6469	0.6746	0.7016	0.7337	0.7556	0.8288	0.7332
142.5	0.7017	0.6382	0.6158	0.6066	0.6157	0.6244	0.6251	0.6333	0.6791	0.6337
145.0	0.6431	0.6202	0.5975	0.5929	0.5930	0.5928	0.5976	0.5884	0.6292	0.6019
147.5	0.6159	0.6110	0.6020	0.5885	0.5840	0.5704	0.5704	0.5615	0.5886	0.5703
150.0	0.6066	0.6022	0.5974	0.5843	0.5793	0.5704	0.5747	0.5613	0.5794	0.5614
152.5	0.6112	0.6066	0.5975	0.5930	0.5840	0.5704	0.5704	0.5702	0.5794	0.5704
155.0	0.6066	0.6021	0.5973	0.5841	0.5749	0.5705	0.5704	0.5749	0.5840	0.5750
157.5	0.6066	0.6110	0.6020	0.5930	0.5885	0.5796	0.5794	0.5840	0.5975	0.5840
160.0	0.6113	0.6155	0.5975	0.6022	0.5930	0.5887	0.5885	0.5885	0.6021	0.5930
162.5	0.6247	0.6247	0.6155	0.6066	0.6109	0.5977	0.5976	0.6022	0.6111	0.6066
165.0	0.6247	0.6292	0.6157	0.6157	0.6111	0.6111	0.6066	0.6066	0.6201	0.6111
167.5	0.6246	0.6291	0.6158	0.6112	0.6156	0.6067	0.6111	0.6113	0.6246	0.6157
170.0	0.6381	0.6338	0.6247	0.6247	0.6202	0.6246	0.6247	0.6247	0.6292	0.6292
172.5	0.6383	0.6293	0.6336	0.6248	0.6247	0.6247	0.6246	0.6202	0.6338	0.6292
175.0	0.6428	0.6338	0.6292	0.6337	0.6292	0.6248	0.6292	0.6292	0.6338	0.6338
177.5	0.6383	0.6338	0.6338	0.6292	0.6292	0.6246	0.6292	0.6292	0.6338	0.6338
180.0	0.6383	0.6383	0.6338	0.6247	0.6202	0.6247	0.6292	0.6383	0.6383	0.6428

C Range: 0 - 360DEG
 C Interval: 5.0DEG
 Test Speed: HIGH
 Temperature: 25DEG
 Operators: yechihong
 Test Date: 2019-05-25

γ Range: 0 - 180DEG
 γ Interval: 0.5DEG
 Test System: EVERFINE GO-2000A_V1 SYSTEM V2.0.272
 Humidity: 70%
 Test Distance: 8.425m [K=1.0000]
 Remarks:

Photometric Data Table [cd]

G/C	100.0	105.0	110.0	115.0	120.0	125.0	130.0	135.0	140.0	145.0
0.0	122.5	122.3	122.2	122.1	122.1	122.1	122.0	122.0	122.0	122.0
2.5	122.3	122.1	122.1	122.0	122.0	121.9	122.0	122.0	121.9	122.0
5.0	121.8	121.8	121.7	121.7	121.7	121.6	121.7	121.7	121.7	121.9
7.5	121.2	121.1	121.1	121.1	121.1	121.2	121.3	121.4	121.4	121.6
10.0	120.3	120.2	120.2	120.3	120.4	120.5	120.6	120.9	121.0	121.2
12.5	119.0	119.1	119.1	119.3	119.5	119.6	119.9	120.2	120.4	120.7
15.0	117.5	117.7	117.8	118.1	118.2	118.6	118.9	119.3	119.6	120.1
17.5	115.9	116.1	116.2	116.6	116.9	117.3	117.8	118.3	118.7	119.3
20.0	113.9	114.2	114.4	115.0	115.4	115.9	116.5	117.2	117.7	118.5
22.5	111.8	112.1	112.4	113.1	113.6	114.4	115.0	115.9	116.6	117.5
25.0	109.5	109.9	110.2	110.9	111.6	112.6	113.5	114.5	115.4	116.4
27.5	106.6	107.2	107.8	109.0	109.6	110.6	111.8	113.0	114.2	115.3
30.0	103.7	104.5	105.1	106.6	107.3	108.6	109.9	111.4	112.7	114.1
32.5	100.6	101.4	102.3	103.6	104.8	106.7	108.0	109.7	111.2	112.8
35.0	97.25	98.21	99.21	100.7	102.3	105.1	106.0	107.9	109.7	111.4
37.5	94.65	94.88	96.42	97.77	99.53	101.7	103.8	106.0	108.1	109.9
40.0	92.11	93.99	92.93	94.66	96.75	99.16	101.7	104.0	106.2	108.3
42.5	88.11	88.03	89.26	92.98	93.90	97.08	99.16	101.8	104.2	106.6
45.0	82.06	85.53	87.20	88.29	90.77	94.79	96.62	99.51	102.2	104.8
47.5	77.59	79.52	84.22	84.85	87.95	91.20	93.96	97.17	100.2	103.0
50.0	73.56	75.57	77.77	81.08	84.38	87.87	93.40	94.78	98.23	101.1
52.5	68.58	70.85	75.66	77.52	80.92	84.86	89.77	92.45	95.85	99.25
55.0	66.41	68.86	71.11	73.83	77.43	81.64	85.72	91.38	93.67	97.29
57.5	61.66	65.21	67.24	70.03	75.53	78.51	82.98	87.45	91.45	95.24
60.0	54.85	59.95	62.77	65.92	70.52	75.63	80.20	84.99	89.14	93.18
62.5	50.26	52.94	57.20	62.32	68.60	72.43	77.40	82.87	87.48	91.08
65.0	45.91	53.45	54.59	58.68	63.63	69.33	75.08	79.84	84.71	88.96
67.5	40.06	43.80	49.14	55.20	60.35	66.35	73.76	77.44	82.74	86.81
70.0	34.90	39.25	46.39	50.96	57.20	63.29	70.56	75.12	79.83	84.61
72.5	31.18	37.87	41.06	47.63	55.04	60.40	66.41	72.28	77.48	82.42
75.0	27.49	31.69	37.30	44.23	51.40	57.62	63.75	69.75	75.16	80.21
77.5	22.04	27.31	35.43	41.54	48.01	54.89	61.18	67.34	72.91	78.07
80.0	18.63	24.76	30.90	38.13	45.29	52.25	58.77	65.04	70.67	75.94
82.5	14.84	21.60	28.07	35.49	42.79	49.87	56.45	62.78	68.46	73.78
85.0	12.92	18.72	25.73	33.16	40.41	47.56	54.19	60.54	66.31	71.68
87.5	11.03	16.84	23.70	31.00	38.18	45.38	52.16	58.39	64.10	69.49
90.0	9.947	15.42	22.02	29.13	36.24	43.39	49.98	56.26	61.98	67.36
92.5	9.426	14.42	20.71	27.54	34.54	41.56	48.08	54.34	60.05	65.35
95.0	9.110	13.71	19.65	26.16	33.01	39.93	46.35	52.51	58.09	63.35
97.5	8.430	13.13	18.69	25.02	31.58	38.22	44.51	50.67	56.22	61.46
100.0	7.415	12.05	17.76	23.91	30.17	36.68	42.83	48.82	54.22	59.34
102.5	6.194	10.55	16.42	22.74	28.88	35.12	41.09	46.97	52.33	57.28
105.0	4.910	8.920	14.54	21.05	27.47	33.61	39.40	45.06	50.26	55.17
107.5	4.160	7.088	12.53	18.81	25.48	31.93	37.68	43.18	48.23	52.99
110.0	3.614	5.166	10.41	16.49	22.97	29.64	35.64	41.19	46.19	50.82
112.5	3.194	3.579	8.097	14.07	20.31	26.82	32.99	38.81	43.88	48.53
115.0	2.857	2.992	5.662	11.52	17.58	23.85	29.91	35.80	41.07	45.88
117.5	2.590	2.628	3.349	8.774	14.70	20.84	26.63	32.43	37.69	42.65
120.0	2.277	2.268	2.310	5.937	11.71	17.69	23.37	28.89	34.01	38.94
122.5	2.096	2.086	2.020	3.180	8.599	14.42	19.92	25.36	30.29	34.98
125.0	1.862	1.833	1.784	1.783	5.421	11.01	16.37	21.70	26.45	31.00
127.5	1.648	1.625	1.585	1.526	2.526	7.580	12.74	17.90	22.47	26.91
130.0	1.462	1.438	1.395	1.326	1.431	4.169	8.947	13.88	18.32	22.69
132.5	1.300	1.267	1.204	1.186	1.218	1.547	5.148	9.811	14.10	18.33
135.0	1.145	1.080	1.078	1.009	0.9793	0.9993	1.847	5.791	9.891	13.89
137.5	0.9079	0.8550	0.8380	0.8094	0.7795	0.8238	0.9241	2.190	5.685	9.473
140.0	0.7381	0.6731	0.6794	0.6786	0.7017	0.7378	0.8061	0.9275	1.984	5.085
142.5	0.6247	0.6020	0.6112	0.6289	0.6519	0.6744	0.7289	0.8009	0.8917	1.584
145.0	0.6021	0.5793	0.5840	0.5884	0.6203	0.6473	0.6836	0.7331	0.7831	0.8505
147.5	0.5704	0.5658	0.5704	0.5704	0.5886	0.6111	0.6476	0.6744	0.7109	0.7559
150.0	0.5613	0.5568	0.5569	0.5659	0.5705	0.5884	0.6069	0.6427	0.6564	0.6880
152.5	0.5658	0.5614	0.5659	0.5704	0.5613	0.5704	0.5975	0.6111	0.6293	0.6473
155.0	0.5704	0.5704	0.5704	0.5706	0.5659	0.5704	0.5840	0.5930	0.6021	0.6202
157.5	0.5840	0.5840	0.5794	0.5795	0.5793	0.5795	0.5837	0.5840	0.5886	0.6021
160.0	0.5930	0.5885	0.5929	0.5885	0.5884	0.5885	0.5885	0.5885	0.5930	0.5930
162.5	0.6066	0.5978	0.6109	0.6065	0.5975	0.6021	0.5975	0.6021	0.6020	0.6065
165.0	0.6157	0.6113	0.6111	0.6066	0.6111	0.6111	0.6111	0.6156	0.6066	0.6066
167.5	0.6157	0.6157	0.6157	0.6202	0.6111	0.6069	0.6157	0.6157	0.6156	0.6157
170.0	0.6292	0.6247	0.6292	0.6292	0.6291	0.6292	0.6247	0.6248	0.6247	0.6204
172.5	0.6292	0.6249	0.6293	0.6338	0.6292	0.6338	0.6382	0.6338	0.6293	0.6247
175.0	0.6338	0.6382	0.6428	0.6382	0.6383	0.6338	0.6383	0.6383	0.6428	0.6338
177.5	0.6338	0.6383	0.6383	0.6429	0.6383	0.6383	0.6383	0.6383	0.6383	0.6339
180.0	0.6428	0.6338	0.6428	0.6473	0.6383	0.6428	0.6473	0.6519	0.6473	0.6473

C Range: 0 - 360DEG
 C Interval: 5.0DEG
 Test Speed: HIGH
 Temperature: 25DEG
 Operators: yechihong
 Test Date: 2019-05-25

γ Range: 0 - 180DEG
 γ Interval: 0.5DEG
 Test System: EVERFINE GO-2000A_V1 SYSTEM V2.0.272
 Humidity: 70%
 Test Distance: 8.425m [K=1.0000]
 Remarks:

Photometric Data Table [cd]

G/C	150.0	155.0	160.0	165.0	170.0	175.0	180.0	185.0	190.0	195.0
0.0	122.0	122.0	122.0	122.0	122.1	122.0	128.1	127.6	127.0	126.6
2.5	122.0	122.1	122.0	122.1	122.0	121.9	128.1	127.6	127.1	126.6
5.0	121.9	121.9	122.0	122.0	121.9	121.9	128.1	127.6	127.0	126.5
7.5	121.7	121.7	121.8	121.8	121.8	121.8	128.0	127.5	126.9	126.4
10.0	121.3	121.5	121.6	121.6	121.6	121.6	127.8	127.3	126.8	126.2
12.5	120.9	121.1	121.2	121.4	121.4	121.4	127.6	127.1	126.6	126.0
15.0	120.4	120.6	120.8	121.0	121.1	121.2	127.3	126.8	126.3	125.6
17.5	119.6	120.1	120.4	120.6	120.7	120.8	127.0	126.5	126.0	125.3
20.0	118.9	119.4	119.8	120.1	120.3	120.4	126.7	126.1	125.6	124.9
22.5	118.2	118.7	119.2	119.7	120.0	120.1	126.4	125.7	125.2	124.5
25.0	117.2	118.0	118.7	119.2	119.5	119.7	126.0	125.4	124.8	124.0
27.5	116.3	117.3	118.0	118.7	119.1	119.3	125.6	125.0	124.4	123.5
30.0	115.4	116.4	117.4	118.1	118.5	118.8	125.2	124.5	123.9	122.9
32.5	114.3	115.5	116.5	117.4	117.8	118.2	125.5	124.0	123.3	122.3
35.0	113.0	114.4	115.5	116.5	117.1	117.5	125.1	123.3	122.6	121.4
37.5	111.7	113.2	114.5	115.5	116.2	116.8	123.1	122.4	121.7	120.5
40.0	110.2	111.9	113.4	114.5	115.4	115.9	122.2	121.6	120.8	119.6
42.5	108.7	110.6	112.2	113.5	114.4	115.0	121.3	120.7	120.0	118.5
45.0	107.1	109.3	111.0	112.4	113.4	114.1	120.5	119.8	119.0	117.5
47.5	105.6	107.9	109.8	111.3	112.4	113.1	119.6	118.8	117.9	116.4
50.0	103.9	106.4	108.5	110.2	111.5	112.1	118.4	117.9	116.8	115.1
52.5	102.2	104.8	107.0	108.8	110.0	111.0	117.2	116.7	115.6	113.8
55.0	100.4	103.2	105.5	107.5	108.8	110.9	116.1	115.3	114.2	112.5
57.5	98.55	101.6	104.0	106.0	107.5	108.4	114.8	114.0	112.9	111.1
60.0	96.66	99.81	102.4	104.6	106.0	107.1	113.2	112.5	111.4	109.5
62.5	94.70	98.06	100.8	103.0	104.6	105.7	111.8	111.0	110.0	108.0
65.0	92.79	96.26	98.99	101.4	103.0	104.1	110.2	109.5	108.3	106.3
67.5	90.77	94.32	97.23	99.68	101.3	102.5	108.6	107.8	106.7	104.6
70.0	88.68	92.42	95.42	97.91	99.66	100.9	106.8	106.1	104.9	102.8
72.5	86.62	90.47	93.55	96.12	97.91	99.13	105.0	104.3	103.1	100.9
75.0	84.61	88.48	91.66	94.34	96.11	97.42	103.2	102.5	101.2	99.08
77.5	82.52	86.55	89.75	92.48	94.35	95.63	101.4	100.6	99.44	97.18
80.0	80.45	84.52	87.80	90.53	92.42	93.72	99.42	98.66	97.46	95.19
82.5	78.37	82.42	85.79	88.56	90.47	91.78	97.41	96.62	95.40	93.13
85.0	76.28	80.40	83.76	86.57	88.54	89.88	95.34	94.56	93.35	91.05
87.5	74.09	78.22	81.55	84.39	86.33	87.69	93.11	92.31	91.12	88.82
90.0	71.96	76.04	79.43	82.24	84.16	85.53	90.83	90.08	88.86	86.56
92.5	69.95	74.01	77.41	80.19	82.15	83.52	88.64	87.87	86.67	84.39
95.0	67.89	71.97	75.28	78.10	80.02	81.34	86.44	85.67	84.54	82.23
97.5	65.92	69.93	73.23	75.99	77.88	79.18	84.16	83.43	82.24	80.01
100.0	63.80	67.81	71.09	73.83	75.76	77.10	81.94	81.21	80.03	77.83
102.5	61.66	65.54	68.78	71.42	73.30	74.65	79.45	78.67	77.56	75.35
105.0	59.45	63.29	66.44	69.06	70.93	72.23	76.87	76.11	74.98	72.88
107.5	57.14	60.93	64.00	66.59	68.47	69.76	74.27	73.52	72.40	70.30
110.0	54.88	58.52	61.51	64.04	65.82	67.11	71.45	70.75	69.67	67.60
112.5	52.52	56.07	59.02	61.46	63.20	64.41	68.61	67.91	66.88	64.87
115.0	49.88	53.49	56.39	58.82	60.50	61.71	65.71	65.05	64.05	62.08
117.5	46.78	50.48	53.40	55.88	57.57	58.83	62.68	62.02	61.03	59.01
120.0	43.09	46.87	49.90	52.46	54.17	55.45	59.24	58.55	57.53	55.48
122.5	39.04	42.83	45.85	48.47	50.24	51.54	55.21	54.47	53.43	51.33
125.0	34.87	38.51	41.48	44.07	45.79	47.14	50.59	49.83	48.83	46.70
127.5	30.67	34.18	36.99	39.49	41.16	42.45	45.65	44.89	43.92	41.86
130.0	26.33	29.77	32.47	34.88	36.47	37.71	40.55	39.87	38.95	37.00
132.5	21.87	25.19	27.81	30.14	31.66	32.92	35.46	34.79	33.90	32.04
135.0	17.29	20.50	23.04	25.29	26.77	27.98	30.24	29.58	28.74	26.93
137.5	12.68	15.74	18.18	20.34	21.76	22.91	24.91	24.25	23.46	21.75
140.0	8.052	10.94	13.24	15.29	16.61	17.76	19.45	18.85	18.08	16.42
142.5	3.538	6.187	8.308	10.24	11.48	12.57	13.98	13.54	12.68	11.13
145.0	0.9981	1.982	3.493	5.255	6.393	7.396	8.540	8.011	7.335	5.913
147.5	0.7928	0.8418	0.9270	1.411	1.913	2.531	3.256	2.809	2.322	1.532
150.0	0.7111	0.7333	0.7564	0.7827	0.7976	0.8136	0.6919	0.6895	0.6873	0.6569
152.5	0.6701	0.6833	0.6976	0.7151	0.7154	0.7237	0.6108	0.6157	0.6111	0.6069
155.0	0.6338	0.6428	0.6566	0.6699	0.6748	0.6831	0.5975	0.5977	0.5930	0.5886
157.5	0.6155	0.6202	0.6294	0.6382	0.6430	0.6518	0.6020	0.5976	0.5975	0.5886
160.0	0.5975	0.6065	0.6159	0.6201	0.6292	0.6292	0.6022	0.6065	0.5931	0.5885
162.5	0.6019	0.6022	0.6156	0.6157	0.6247	0.6247	0.6158	0.6066	0.6021	0.5930
165.0	0.6110	0.6111	0.6201	0.6201	0.6246	0.6205	0.6245	0.6157	0.6066	0.6065
167.5	0.6199	0.6156	0.6246	0.6203	0.6246	0.6291	0.6249	0.6202	0.6201	0.6111
170.0	0.6291	0.6248	0.6292	0.6292	0.6337	0.6383	0.6429	0.6382	0.6292	0.6292
172.5	0.6292	0.6292	0.6337	0.6292	0.6383	0.6383	0.6520	0.6563	0.6473	0.6473
175.0	0.6427	0.6383	0.6384	0.6383	0.6383	0.6428	0.6609	0.6564	0.6474	0.6428
177.5	0.6428	0.6428	0.6518	0.6473	0.6428	0.6428	0.6609	0.6564	0.6474	0.6564
180.0	0.6428	0.6473	0.6473	0.6519	0.6473	0.6519	0.6564	0.6609	0.6564	0.6519

C Range: 0 - 360DEG
 C Interval: 5.0DEG
 Test Speed: HIGH
 Temperature: 25DEG
 Operators: yechihong
 Test Date: 2019-05-25

γ Range: 0 - 180DEG
 γ Interval: 0.5DEG
 Test System: EVERFINE GO-2000A_V1 SYSTEM V2.0.272
 Humidity: 70%
 Test Distance: 8.425m [K=1.0000]
 Remarks:

Photometric Data Table [cd]

G/C	200.0	205.0	210.0	215.0	220.0	225.0	230.0	235.0	240.0	245.0
0.0	126.1	125.7	125.4	125.1	124.8	124.4	124.2	124.0	123.8	123.5
2.5	126.1	125.8	125.4	125.1	124.8	124.5	124.2	123.9	123.8	123.4
5.0	126.1	125.7	125.3	124.9	124.6	124.3	124.0	123.7	123.5	123.2
7.5	126.0	125.6	125.1	124.7	124.3	123.9	123.6	123.2	123.0	122.7
10.0	125.8	125.3	124.8	124.3	123.9	123.5	123.1	122.6	122.2	122.0
12.5	125.5	124.9	124.5	123.9	123.3	122.8	122.3	121.9	121.4	121.0
15.0	125.2	124.5	124.0	123.3	122.6	122.0	121.4	120.9	120.3	119.7
17.5	124.8	124.0	123.4	122.6	121.8	121.1	120.4	119.7	119.1	118.3
20.0	124.3	123.4	122.6	121.7	120.9	120.1	119.2	118.3	117.6	116.7
22.5	123.8	122.8	121.9	120.9	119.8	118.8	117.8	116.7	115.9	115.0
25.0	123.1	122.1	121.1	119.9	118.7	117.5	116.3	115.0	114.0	112.9
27.5	122.5	121.4	120.2	118.8	117.5	116.1	114.7	113.2	111.9	110.6
30.0	121.9	120.6	119.3	117.7	116.2	114.5	112.9	111.2	109.7	108.2
32.5	121.1	119.6	118.3	116.5	114.8	112.8	111.0	109.0	107.4	105.6
35.0	120.2	118.7	117.1	115.1	113.3	111.1	109.0	106.7	104.8	102.8
37.5	119.2	117.5	115.8	113.7	111.6	109.2	106.9	104.4	102.2	99.88
40.0	118.1	116.3	114.4	112.2	109.9	107.2	104.7	101.9	99.34	96.77
42.5	117.0	115.1	113.0	110.5	108.0	105.1	102.4	99.34	96.45	93.55
45.0	115.9	113.8	111.5	108.8	105.9	102.8	99.89	96.59	93.45	90.20
47.5	114.7	112.4	109.9	107.0	103.9	100.5	97.27	93.65	90.37	87.11
50.0	113.4	110.9	108.3	105.2	101.8	98.17	94.58	90.64	87.10	83.30
52.5	112.0	109.4	106.6	103.3	99.76	95.78	91.86	87.56	83.72	79.61
55.0	110.5	107.8	104.9	101.3	97.62	93.32	89.13	85.53	80.18	75.77
57.5	109.0	106.2	103.1	99.28	95.42	90.90	86.37	82.16	76.64	72.19
60.0	107.4	104.4	101.2	97.22	93.11	88.38	83.56	78.25	73.11	67.93
62.5	105.7	102.6	99.24	95.17	90.78	85.79	80.73	75.11	69.64	64.00
65.0	104.0	100.8	97.27	93.07	88.47	83.29	77.91	72.02	66.22	60.34
67.5	102.2	98.85	95.27	90.90	86.14	80.78	75.12	68.97	62.86	56.43
70.0	100.3	96.90	93.24	88.70	83.81	78.25	72.37	65.95	59.51	52.83
72.5	98.42	94.92	91.15	86.46	81.49	75.69	69.64	63.00	56.28	49.29
75.0	96.52	92.96	89.05	84.24	79.16	73.23	66.99	60.61	53.21	46.08
77.5	94.58	90.98	86.97	82.09	76.90	70.83	64.40	57.80	50.27	42.83
80.0	92.58	88.89	84.86	79.94	74.66	68.49	61.98	54.78	47.52	39.90
82.5	90.48	86.76	82.72	77.73	72.39	66.20	59.65	52.35	45.01	37.27
85.0	88.37	84.64	80.58	75.58	70.17	63.96	57.34	50.05	42.67	34.96
87.5	86.13	82.44	78.39	73.41	67.99	61.77	55.18	47.90	40.50	32.86
90.0	83.89	80.21	76.15	71.21	65.82	59.62	53.06	45.91	38.59	31.04
92.5	81.72	78.11	74.03	69.16	63.81	57.68	51.20	44.14	36.96	29.51
95.0	79.57	75.96	71.96	67.09	61.82	55.81	49.46	42.53	35.53	28.28
97.5	77.38	73.85	69.94	65.14	59.97	53.99	47.74	40.91	34.10	27.10
100.0	75.21	71.66	67.83	63.01	57.93	52.09	46.05	39.38	32.70	25.95
102.5	72.77	69.27	65.53	60.88	55.97	50.24	44.28	37.81	31.41	24.88
105.0	70.36	66.92	63.25	58.65	53.78	48.23	42.49	36.27	30.01	23.33
107.5	67.84	64.44	60.82	56.36	51.64	46.28	40.73	34.56	28.13	21.13
110.0	65.23	61.91	58.40	54.09	49.51	44.23	38.64	32.26	25.62	18.75
112.5	62.59	59.36	55.94	51.71	47.12	41.78	35.98	29.43	22.91	16.36
115.0	59.87	56.66	53.26	48.96	44.25	38.67	32.81	26.37	20.16	13.79
117.5	56.80	53.52	50.06	45.59	40.75	35.10	29.39	23.25	17.24	11.01
120.0	53.19	49.80	46.24	41.68	36.87	31.39	25.93	19.98	14.14	8.121
122.5	48.99	45.54	41.97	37.51	32.91	27.65	22.37	16.53	10.91	5.198
125.0	44.41	41.01	37.56	33.29	28.86	23.76	18.64	12.95	7.573	3.402
127.5	39.66	36.40	33.13	28.97	24.70	19.71	14.76	9.337	4.320	3.020
130.0	34.88	31.75	28.58	24.52	20.39	15.56	10.84	5.682	2.723	2.703
132.5	29.99	26.96	23.87	19.96	15.97	11.37	6.847	2.706	2.380	2.418
135.0	24.96	22.04	19.05	15.28	11.50	7.103	3.104	1.971	2.063	2.125
137.5	19.82	17.00	14.18	10.59	7.019	3.053	1.656	1.725	1.811	1.879
140.0	14.64	11.95	9.301	5.930	2.743	1.364	1.425	1.539	1.657	1.735
142.5	9.456	6.939	4.485	1.871	1.077	1.114	1.225	1.336	1.465	1.548
145.0	4.386	2.268	1.140	0.8380	0.8871	0.9512	1.045	1.141	1.235	1.318
147.5	0.9732	0.7255	0.7011	0.7023	0.7560	0.8195	0.9090	0.9870	1.077	1.150
150.0	0.6426	0.6294	0.6156	0.6294	0.6653	0.7154	0.7918	0.8607	0.9412	0.9965
152.5	0.5975	0.5976	0.5839	0.5795	0.6110	0.6431	0.6969	0.7516	0.8191	0.8692
155.0	0.5883	0.5750	0.5749	0.5748	0.5659	0.5933	0.6335	0.6657	0.7151	0.7519
157.5	0.5840	0.5749	0.5704	0.5704	0.5658	0.5703	0.5838	0.6157	0.6427	0.6704
160.0	0.5840	0.5749	0.5704	0.5703	0.5703	0.5702	0.5748	0.5749	0.5840	0.6067
162.5	0.5886	0.5840	0.5885	0.5748	0.5705	0.5794	0.5749	0.5749	0.5749	0.5749
165.0	0.5930	0.5975	0.5885	0.5884	0.5794	0.5793	0.5751	0.5839	0.5839	0.5749
167.5	0.6067	0.6019	0.5976	0.5975	0.5886	0.5840	0.5886	0.5794	0.5794	0.5794
170.0	0.6202	0.6246	0.6202	0.6110	0.6111	0.6020	0.6021	0.6021	0.5976	0.5931
172.5	0.6384	0.6382	0.6293	0.6247	0.6247	0.6292	0.6202	0.6202	0.6202	0.6155
175.0	0.6473	0.6428	0.6383	0.6383	0.6293	0.6293	0.6292	0.6247	0.6247	0.6247
177.5	0.6473	0.6473	0.6428	0.6383	0.6338	0.6338	0.6338	0.6337	0.6247	0.6338
180.0	0.6428	0.6519	0.6473	0.6428	0.6428	0.6473	0.6383	0.6338	0.6383	0.6338

C Range: 0 - 360DEG
 C Interval: 5.0DEG
 Test Speed: HIGH
 Temperature:25DEG
 Operators:yechihong
 Test Date:2019-05-25

γ Range: 0 - 180DEG
 γ Interval: 0.5DEG
 Test System:EVERFINE GO-2000A_V1 SYSTEM V2.0.272
 Humidity:70%
 Test Distance:8.425m [K=1.0000]
 Remarks:

Photometric Data Table [cd]

G/C	250.0	255.0	260.0	265.0	270.0	275.0	280.0	285.0	290.0	295.0
0.0	123.4	123.2	123.0	122.9	122.7	122.5	122.5	122.3	122.2	122.1
2.5	123.3	123.1	122.9	122.7	122.6	122.4	122.3	122.2	122.2	122.0
5.0	123.0	122.8	122.6	122.4	122.2	122.0	121.9	121.8	121.8	121.6
7.5	122.4	122.1	122.0	121.8	121.6	121.4	121.3	121.2	121.2	121.1
10.0	121.6	121.3	121.1	120.8	120.7	120.6	120.4	120.3	120.3	120.3
12.5	120.5	120.3	120.0	119.7	119.5	119.3	119.3	119.2	119.3	119.3
15.0	119.3	118.9	118.6	118.3	118.1	117.9	117.9	117.8	118.0	118.0
17.5	117.9	117.3	116.9	116.6	116.4	116.2	116.2	116.3	116.4	116.6
20.0	116.2	115.5	115.1	114.6	114.5	114.3	114.3	114.4	114.7	114.9
22.5	114.3	113.5	113.0	112.5	112.4	112.1	112.2	112.3	112.7	113.0
25.0	112.1	111.2	110.6	110.1	109.9	109.6	109.8	110.0	110.5	110.9
27.5	109.7	108.6	108.0	107.3	107.1	106.9	107.1	107.3	108.0	108.6
30.0	107.0	105.9	105.2	104.4	104.1	103.9	104.2	104.6	105.3	106.1
32.5	104.2	102.9	102.0	101.3	100.9	100.8	101.1	101.6	102.5	103.5
35.0	101.3	99.75	98.75	97.79	97.50	97.39	97.73	98.36	99.47	100.7
37.5	98.08	96.31	95.27	94.22	93.87	93.73	94.18	94.95	96.23	97.66
40.0	94.75	92.80	91.49	90.42	90.06	89.86	90.46	91.34	92.84	94.51
42.5	91.22	89.00	87.58	87.17	86.09	87.33	86.53	87.51	89.30	91.19
45.0	89.46	85.08	85.26	82.20	84.37	84.48	82.48	84.91	85.85	88.32
47.5	83.91	81.13	80.97	77.64	78.84	77.09	79.80	79.53	81.71	84.22
50.0	79.94	76.74	74.63	73.01	72.43	72.45	73.59	75.24	77.76	81.55
52.5	75.92	72.63	70.02	70.40	67.55	70.82	68.96	70.88	76.02	76.91
55.0	72.23	67.99	66.78	63.30	65.32	63.18	64.65	66.43	69.59	73.19
57.5	70.51	64.10	60.38	60.30	58.08	59.29	59.35	62.02	67.95	70.66
60.0	63.79	58.89	55.48	53.07	52.27	53.91	54.49	60.32	61.27	67.61
62.5	59.03	55.82	51.37	49.28	49.21	48.99	49.78	52.86	58.21	64.67
65.0	56.19	52.35	47.95	45.29	42.12	44.04	45.79	48.77	53.44	58.06
67.5	50.53	45.10	40.74	38.22	37.94	38.52	39.86	43.72	48.96	55.36
70.0	47.82	41.19	38.02	32.23	31.26	32.26	36.79	39.98	46.09	50.85
72.5	42.98	36.24	31.52	27.45	27.43	27.29	30.41	36.02	41.13	47.40
75.0	39.03	32.49	28.45	24.74	21.96	22.69	26.46	32.05	37.51	44.23
77.5	35.68	29.43	23.36	18.11	17.12	17.75	22.85	27.40	34.25	42.48
80.0	32.64	25.18	19.17	15.50	12.63	14.16	18.72	24.17	31.52	38.30
82.5	29.73	22.70	16.13	11.10	8.954	10.69	15.08	21.91	28.53	35.73
85.0	27.37	19.85	13.49	8.349	6.096	7.938	12.91	19.05	26.26	33.43
87.5	25.36	17.97	11.73	6.914	4.291	6.497	11.09	17.22	24.15	31.30
90.0	23.66	16.55	10.60	6.307	2.330	6.075	10.12	15.81	22.57	29.58
92.5	22.35	15.59	10.06	6.413	4.995	6.450	9.832	15.00	21.41	28.21
95.0	21.35	14.90	9.867	6.546	5.845	6.690	9.628	14.47	20.50	27.04
97.5	20.40	14.38	9.426	6.560	6.011	6.584	9.275	13.93	19.70	25.96
100.0	19.61	13.56	8.594	6.125	5.808	6.203	8.558	13.26	18.89	24.92
102.5	18.46	12.14	7.606	5.764	5.589	5.815	7.698	12.15	17.91	23.86
105.0	16.62	10.65	6.387	5.451	5.331	5.446	6.576	10.81	16.56	22.65
107.5	14.68	8.965	5.547	5.144	5.060	5.072	5.426	9.376	14.92	21.08
110.0	12.61	7.054	5.064	4.836	4.776	4.722	4.887	7.791	13.16	19.21
112.5	10.34	5.186	4.656	4.541	4.476	4.401	4.454	6.147	11.34	17.17
115.0	7.923	4.519	4.323	4.239	4.187	4.121	4.128	4.560	9.443	15.06
117.5	5.417	4.120	4.011	3.952	3.905	3.881	3.879	3.949	7.450	12.84
120.0	3.981	3.781	3.716	3.664	3.661	3.662	3.652	3.658	5.422	10.52
122.5	3.625	3.492	3.449	3.404	3.426	3.445	3.440	3.383	3.602	8.061
125.0	3.300	3.214	3.186	3.160	3.177	3.192	3.203	3.134	3.095	5.688
127.5	2.982	2.961	2.941	2.925	2.938	2.952	2.946	2.884	2.833	3.467
130.0	2.716	2.712	2.719	2.708	2.720	2.726	2.715	2.667	2.621	2.599
132.5	2.462	2.473	2.489	2.490	2.511	2.517	2.516	2.458	2.408	2.346
135.0	2.212	2.242	2.280	2.296	2.353	2.359	2.340	2.256	2.195	2.074
137.5	1.950	2.006	2.068	2.092	2.113	2.114	2.114	2.039	1.965	1.839
140.0	1.774	1.834	1.901	1.925	1.950	1.939	1.906	1.838	1.765	1.658
142.5	1.625	1.671	1.733	1.767	1.765	1.743	1.693	1.635	1.584	1.482
145.0	1.420	1.476	1.529	1.572	1.579	1.553	1.521	1.477	1.412	1.313
147.5	1.222	1.277	1.326	1.358	1.371	1.364	1.343	1.291	1.235	1.164
150.0	1.072	1.114	1.163	1.186	1.203	1.186	1.168	1.137	1.082	1.019
152.5	0.9364	0.9690	1.004	1.023	1.041	1.028	1.018	0.9917	0.9458	0.8835
155.0	0.8052	0.8331	0.8641	0.8786	0.8960	0.8878	0.8780	0.8425	0.8187	0.7696
157.5	0.7015	0.7200	0.7466	0.7522	0.7646	0.7561	0.7599	0.7292	0.7150	0.6795
160.0	0.6335	0.6340	0.6518	0.6612	0.6742	0.6659	0.6653	0.6478	0.6470	0.6247
162.5	0.5794	0.5842	0.5930	0.6025	0.6065	0.5977	0.6066	0.6021	0.6066	0.6112
165.0	0.5882	0.5794	0.5885	0.5931	0.6021	0.6066	0.6067	0.6111	0.6111	0.6111
167.5	0.5840	0.5840	0.5838	0.5930	0.6021	0.6020	0.6111	0.6111	0.6067	0.6068
170.0	0.5975	0.5974	0.5932	0.6021	0.6067	0.6111	0.6202	0.6201	0.6203	0.6247
172.5	0.6157	0.6111	0.6111	0.6201	0.6202	0.6291	0.6292	0.6292	0.6292	0.6383
175.0	0.6202	0.6157	0.6158	0.6248	0.6203	0.6338	0.6383	0.6338	0.6428	0.6428
177.5	0.6292	0.6202	0.6202	0.6292	0.6337	0.6338	0.6383	0.6383	0.6428	0.6428
180.0	0.6338	0.6202	0.6247	0.6383	0.6383	0.6383	0.6383	0.6428	0.6428	0.6473

C Range: 0 - 360DEG
 C Interval: 5.0DEG
 Test Speed: HIGH
 Temperature: 25DEG
 Operators: yechihong
 Test Date: 2019-05-25

γ Range: 0 - 180DEG
 γ Interval: 0.5DEG
 Test System: EVERFINE GO-2000A_V1 SYSTEM V2.0.272
 Humidity: 70%
 Test Distance: 8.425m [K=1.0000]
 Remarks:

Photometric Data Table [cd]

G/C	300.0	305.0	310.0	315.0	320.0	325.0	330.0	335.0	340.0	345.0
0.0	122.1	122.1	122.0	122.0	122.0	122.0	122.0	122.0	122.0	122.1
2.5	122.0	121.9	121.9	121.9	122.0	122.0	122.0	122.0	122.0	122.0
5.0	121.7	121.6	121.6	121.6	121.7	121.8	121.8	121.8	121.9	121.9
7.5	121.1	121.1	121.2	121.2	121.4	121.4	121.5	121.6	121.7	121.8
10.0	120.4	120.5	120.6	120.6	120.8	121.0	121.2	121.3	121.5	121.5
12.5	119.4	119.5	119.8	119.9	120.2	120.4	120.7	120.9	121.1	121.2
15.0	118.3	118.5	118.8	119.1	119.4	119.8	120.1	120.4	120.8	120.9
17.5	117.0	117.3	117.7	118.1	118.6	119.0	119.5	119.9	120.3	120.6
20.0	115.4	115.8	116.4	117.0	117.6	118.1	118.7	119.2	119.7	120.1
22.5	113.7	114.3	114.9	115.7	116.5	117.1	117.9	118.5	119.1	119.6
25.0	111.7	112.5	113.4	114.3	115.2	116.0	116.9	117.7	118.5	119.0
27.5	109.5	110.5	111.7	112.7	113.9	114.9	115.9	116.8	117.7	118.3
30.0	107.3	108.5	109.8	111.0	112.4	113.6	114.9	115.9	116.9	117.7
32.5	104.8	106.2	107.8	109.2	110.8	112.3	113.8	115.1	116.2	117.1
35.0	102.2	103.8	105.6	107.4	109.2	110.9	112.7	114.1	115.4	116.4
37.5	99.47	101.2	103.4	105.4	107.5	109.5	111.4	112.9	114.3	115.5
40.0	96.52	98.64	101.1	103.4	105.8	107.9	110.0	111.8	113.3	114.6
42.5	93.48	95.94	98.66	101.3	103.9	106.3	108.7	110.5	112.2	113.5
45.0	90.44	93.23	96.22	99.12	102.0	104.6	107.1	109.2	111.0	112.4
47.5	87.27	90.36	93.72	96.84	99.94	102.8	105.5	107.7	109.7	111.2
50.0	84.24	87.42	91.06	94.46	97.85	100.9	103.8	106.3	108.4	110.1
52.5	80.73	84.47	88.36	92.03	95.68	98.96	102.1	104.7	107.0	108.8
55.0	77.32	81.39	85.63	89.53	93.48	96.99	100.3	103.1	105.6	107.5
57.5	73.91	78.26	82.79	87.04	91.25	95.04	98.57	101.6	104.1	106.1
60.0	70.44	75.11	79.97	84.53	89.04	93.07	96.80	99.85	102.5	104.6
62.5	66.98	72.04	77.26	82.12	86.86	91.02	94.85	98.06	100.9	103.0
65.0	63.56	68.97	74.56	79.69	84.58	88.89	92.91	96.27	99.21	101.4
67.5	60.27	66.10	71.89	77.23	82.27	86.76	90.98	94.42	97.46	99.73
70.0	57.08	63.23	69.29	74.71	80.02	84.66	88.96	92.51	95.62	97.97
72.5	54.00	60.31	66.86	72.30	77.75	82.53	86.95	90.58	93.72	96.15
75.0	51.03	57.57	63.99	69.92	75.51	80.39	84.90	88.61	91.84	94.32
77.5	48.16	54.91	61.51	67.54	73.23	78.27	82.86	86.64	89.92	92.36
80.0	45.52	52.38	59.13	65.27	71.09	76.15	80.75	84.58	87.87	90.36
82.5	43.03	50.05	56.80	62.97	68.83	73.94	78.64	82.51	85.82	88.36
85.0	40.67	47.70	54.51	60.75	66.65	71.81	76.56	80.41	83.80	86.35
87.5	38.59	45.63	52.45	58.74	64.61	69.75	74.45	78.34	81.66	84.24
90.0	36.74	43.72	50.47	56.71	62.55	67.68	72.36	76.26	79.55	82.09
92.5	35.15	41.98	48.64	54.83	60.62	65.72	70.37	74.19	77.48	80.02
95.0	33.78	40.48	47.06	53.12	58.81	63.88	68.41	72.22	75.45	77.95
97.5	32.51	39.09	45.51	51.44	57.03	61.99	66.46	70.23	73.39	75.84
100.0	31.29	37.69	43.95	49.76	55.29	60.13	64.58	68.21	71.36	73.74
102.5	30.09	36.30	42.44	48.07	53.44	58.18	62.51	66.10	69.20	71.60
105.0	28.84	34.89	40.81	46.31	51.55	56.19	60.41	63.93	66.92	69.26
107.5	27.39	33.36	39.14	44.50	49.60	54.12	58.22	61.66	64.60	66.84
110.0	25.55	31.61	37.40	42.65	47.59	51.98	55.98	59.29	62.20	64.35
112.5	23.43	29.47	35.33	40.62	45.49	49.76	53.64	56.87	59.67	61.77
115.0	21.10	27.01	32.88	38.22	43.17	47.36	51.19	54.32	57.06	59.14
117.5	18.63	24.40	30.14	35.42	40.39	44.65	48.55	51.61	54.35	56.36
120.0	16.11	21.64	27.22	32.38	37.31	41.54	45.45	48.54	51.29	53.29
122.5	13.46	18.77	24.18	29.13	33.98	38.11	41.99	45.06	47.81	49.78
125.0	10.72	15.85	21.00	25.80	30.50	34.52	38.25	41.25	43.99	45.92
127.5	8.016	12.80	17.76	22.38	26.89	30.76	34.39	37.27	39.94	41.78
130.0	5.376	9.767	14.46	18.88	23.22	26.92	30.41	33.19	35.73	37.49
132.5	2.879	6.759	11.10	15.26	19.41	22.98	26.32	28.95	31.40	33.14
135.0	1.963	3.907	7.858	11.63	15.59	18.97	22.20	24.70	27.02	28.61
137.5	1.734	1.775	4.682	8.117	11.71	14.90	18.02	20.37	22.56	24.05
140.0	1.552	1.431	1.825	4.708	7.902	10.83	13.79	15.98	18.05	19.41
142.5	1.367	1.255	1.167	1.643	4.287	6.846	9.553	11.59	13.52	14.76
145.0	1.217	1.109	1.032	0.9376	1.246	3.088	5.411	7.289	9.030	10.15
147.5	1.082	0.9872	0.9002	0.8108	0.7511	0.7568	1.642	3.159	4.676	5.645
150.0	0.9500	0.8560	0.7872	0.7066	0.6653	0.6295	0.6246	0.6850	1.013	1.500
152.5	0.8367	0.7609	0.7016	0.6521	0.6111	0.5976	0.5975	0.6021	0.6109	0.6203
155.0	0.7326	0.6794	0.6471	0.6066	0.6021	0.5885	0.5885	0.5887	0.5885	0.5931
157.5	0.6605	0.6340	0.6066	0.6021	0.6021	0.5974	0.5888	0.5930	0.5930	0.6018
160.0	0.6066	0.6066	0.6066	0.6111	0.6066	0.5975	0.5977	0.5976	0.5976	0.5975
162.5	0.6111	0.6111	0.6111	0.6066	0.6066	0.6111	0.6067	0.6111	0.6111	0.6021
165.0	0.6111	0.6156	0.6201	0.6068	0.6111	0.6112	0.6157	0.6113	0.6112	0.6155
167.5	0.6112	0.6201	0.6158	0.6157	0.6157	0.6157	0.6157	0.6157	0.6203	0.6202
170.0	0.6246	0.6247	0.6337	0.6292	0.6338	0.6292	0.6294	0.6292	0.6293	0.6292
172.5	0.6382	0.6428	0.6383	0.6428	0.6428	0.6383	0.6428	0.6472	0.6428	0.6428
175.0	0.6338	0.6428	0.6428	0.6428	0.6473	0.6427	0.6473	0.6519	0.6473	0.6473
177.5	0.6427	0.6429	0.6473	0.6473	0.6428	0.6429	0.6473	0.6428	0.6519	0.6473
180.0	0.6428	0.6428	0.6473	0.6428	0.6473	0.6473	0.6473	0.6519	0.6519	0.6473

C Range: 0 - 360DEG
 C Interval: 5.0DEG
 Test Speed: HIGH
 Temperature: 25DEG
 Operators: yechihong
 Test Date: 2019-05-25

γ Range: 0 - 180DEG
 γ Interval: 0.5DEG
 Test System: EVERFINE GO-2000A_V1 SYSTEM V2.0.272
 Humidity: 70%
 Test Distance: 8.425m [K=1.0000]
 Remarks:

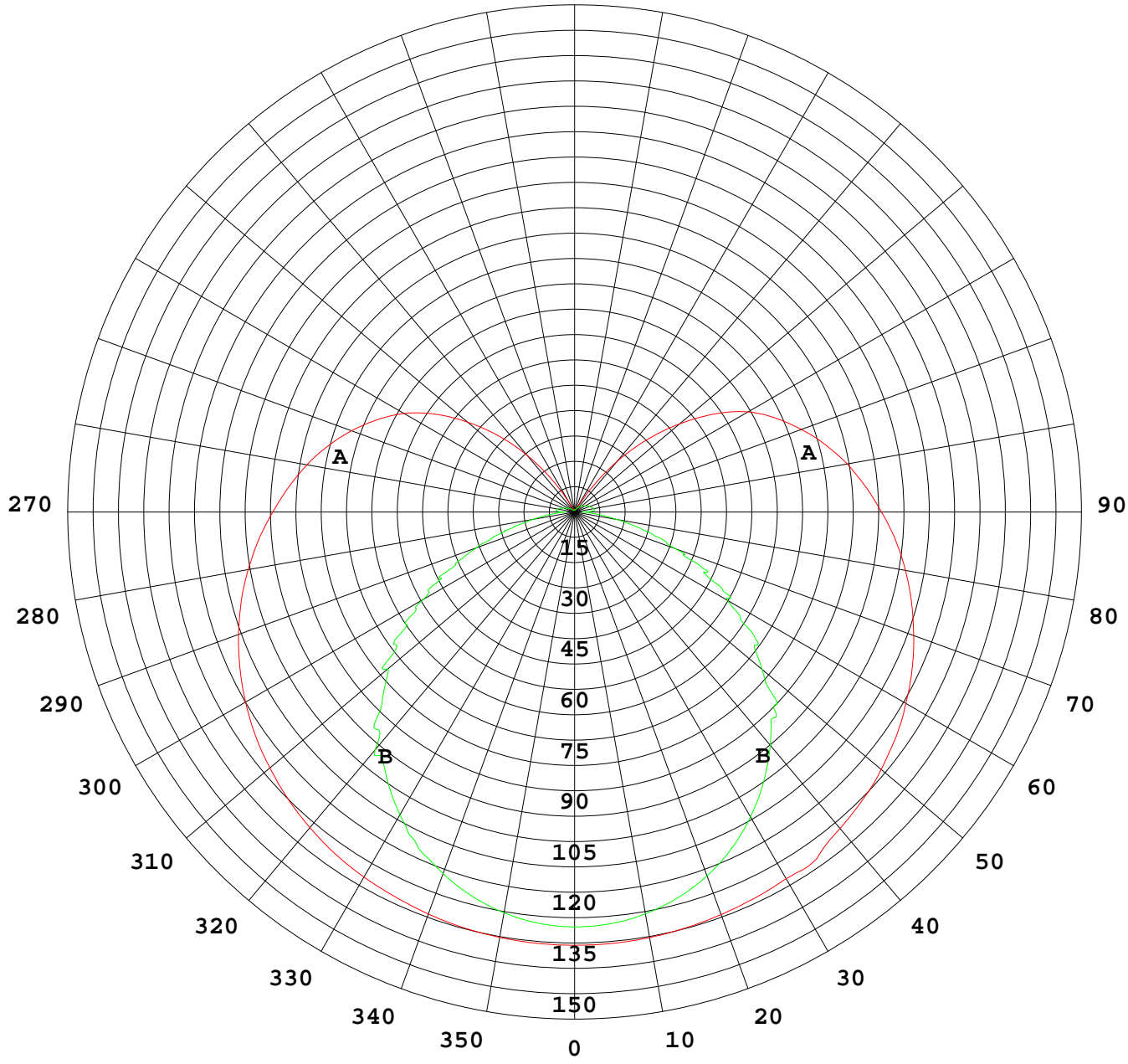
Photometric Data Table [cd]

G/C	350.0	355.0
0.0	122.0	122.0
2.5	122.0	122.0
5.0	122.0	121.9
7.5	121.8	121.8
10.0	121.6	121.6
12.5	121.4	121.4
15.0	121.1	121.3
17.5	120.8	120.9
20.0	120.4	120.6
22.5	119.9	120.2
25.0	119.4	119.7
27.5	119.0	119.2
30.0	118.4	118.8
32.5	117.8	118.2
35.0	117.2	117.6
37.5	116.3	116.9
40.0	115.5	116.0
42.5	114.6	115.2
45.0	113.6	114.3
47.5	112.5	113.4
50.0	111.4	112.3
52.5	110.2	111.1
55.0	108.9	109.8
57.5	107.6	108.4
60.0	106.2	107.1
62.5	104.6	105.6
65.0	103.1	104.0
67.5	101.5	102.5
70.0	99.73	100.8
72.5	98.02	98.96
75.0	96.14	97.22
77.5	94.29	95.37
80.0	92.34	93.36
82.5	90.24	91.35
85.0	88.28	89.36
87.5	86.20	87.21
90.0	84.02	85.11
92.5	81.92	82.97
95.0	79.90	80.88
97.5	77.73	78.76
100.0	75.56	76.57
102.5	73.42	74.35
105.0	71.02	71.96
107.5	68.60	69.51
110.0	66.08	66.92
112.5	63.45	64.30
115.0	60.73	61.49
117.5	57.89	58.65
120.0	54.88	55.61
122.5	51.39	52.10
125.0	47.49	48.18
127.5	43.32	43.95
130.0	38.95	39.53
132.5	34.48	35.02
135.0	29.92	30.40
137.5	25.31	25.72
140.0	20.60	20.98
142.5	15.85	16.18
145.0	11.15	11.39
147.5	6.516	6.710
150.0	2.141	2.259
152.5	0.6201	0.6253
155.0	0.5975	0.6065
157.5	0.5931	0.6020
160.0	0.5930	0.5976
162.5	0.6065	0.6066
165.0	0.6067	0.6111
167.5	0.6112	0.6156
170.0	0.6250	0.6292
172.5	0.6383	0.6426
175.0	0.6429	0.6473
177.5	0.6473	0.6473
180.0	0.6473	0.6473

C Range: 0 - 360DEG
 C Interval: 5.0DEG
 Test Speed: HIGH
 Temperature: 25DEG
 Operators: yechihong
 Test Date: 2019-05-25

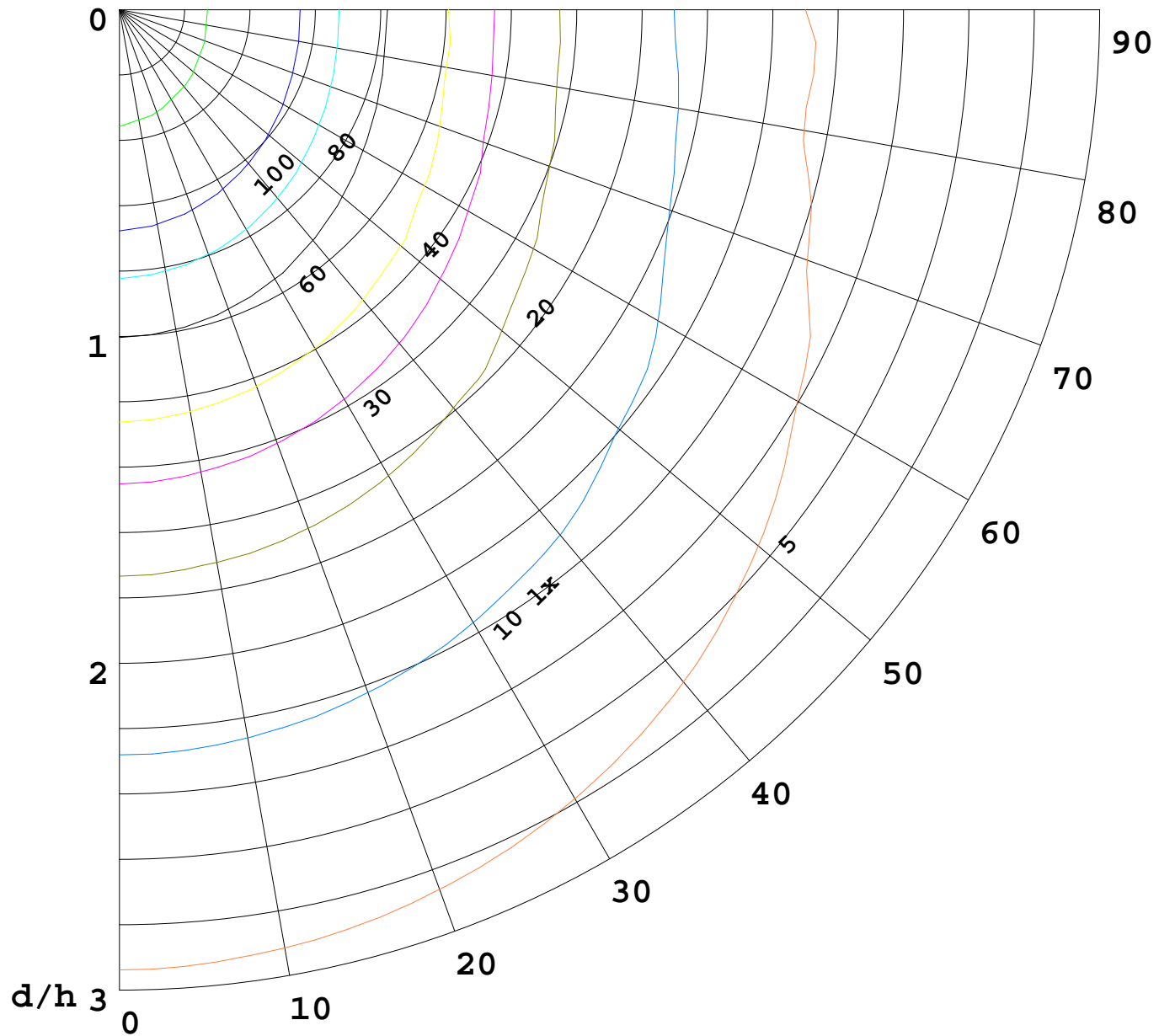
γ Range: 0 - 180DEG
 γ Interval: 0.5DEG
 Test System: EVERFINE GO-2000A_V1 SYSTEM V2.0.272
 Humidity: 70%
 Test Distance: 8.425m [K=1.0000]
 Remarks:

I(cd)



1000 lm

$\kappa = 1$



F = 5000 lm
K = 0.7
Hcc = 0.0 m
Hfc = 0.0 m
Eave = 100 lx

	Pcc	Pw	Pfc
—————	70	50	30
—————	50	30	20

