



LOCATION		DATE
PREPARED BY		QUANTITY
COMMENTS		FIXTURE TYPE
CATALOG NUMBER		

## Alta LED Flush Mount AAF Series

### Features

This low profile design provides a dramatic look and features an edge-lit light panel construction. Products can be used in various applications including corridors, bath, hallway, kitchen and anywhere general lighting is needed. Mounts to standard junction box (not included).

### Construction

Housing is die-formed steel. Standard mounting holes and hardware included. Power supply connections must be made inside junction box (not included).

### Finish

Choose from painted black/chrome or satin nickel/white finish combinations.

### Diffuser

White acrylic.

### Electrical

#### D1 Driver

Input 120 VAC, 60 Hz. The LED driver is dimmable with a 2-wire (TRIAC) or electronic low voltage (ELV) dimmer switch.

#### D2 Driver

Input 120-277 VAC 60 Hz. LED driver is dimmable 0-10V DC.

### LED

Integrated LED modules capable of producing:

12" - 17.5W, 1400 source lumens

16" - 31W, 2600 source lumens

3000K (CCT). Rated for 50,000 Hrs. 90 CRI.

### Certification

cETLus listed for damp locations.

### Warranty

Limited warranty: This fixture is free from defects in materials and workmanship for a period of 5 years from date-of-purchase.

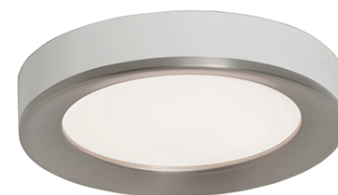
### Specifications and dimensions

subject to change without notice.

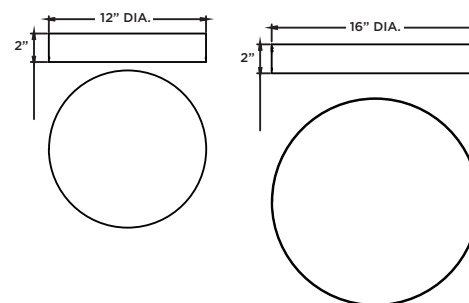
**Limited Quantities Remain.  
Consult Factory.**



Black/Chrome



Satin Nickel/White



## Ordering Information:

Black/Chrome	Satin Nickel/White	LED	Source Lumens	CCT	DIA.	D
AAF121400L30D1BKPC	AAF121400L30D1SNWH	17.5W	1400	3000K	12"	2"
AAF121400L30D2BKPC	AAF121400L30D2SNWH	17.5W	1400	3000K	12"	2"
AAF162600L30D1BKPC	AAF162600L30D1SNWH	31W	2600	3000K	16"	2"
AAF162600L30D2BKPC	AAF162600L30D2SNWH	31W	2600	3000K	16"	2"