



LOCATION		DATE
PREPARED BY		QUANTITY
COMMENTS		FIXTURE TYPE
CATALOG NUMBER		

Algiers LED Sconce ALS Series

Features

Contemporary style fixture with metal ends and linen acrylic diffuser. Ideal use in hallways, entrances or anywhere general lighting is needed. Provides lighting in residential, commercial and hospitality applications. Meets ADA requirements. Fixture mounts standard to junction box (not included).

Construction

Back pan is die formed from 22-gauge steel and painted in lighting grade white. Decorative metal ends are available in Satin Nickel or Oakley Bronze. Standard mounting holes and hardware are included. Power supply connections must be made inside a junction box (not included).

Finish

Metal ends in Satin Nickel.

Diffuser

Linen white acrylic 0.100" thick.

Electrical

Input 120-277 VAC 60 Hz. 0.14A at 120 VAC.
Compatible with residential (TRIAC/ELV) and commercial (0-10V) dimmers.
TRIAC and ELV dimming only at 120 VAC.

LED

Integrated LED modules capable of producing:
17W, 1400 source lumens
Adjustable Choice 3000K, 3500K, 4000K (CCT).
Rated for 50,000 Hrs. 90 CRI.

Certification

All fixtures are cETLus listed for indoor damp locations.
ADA

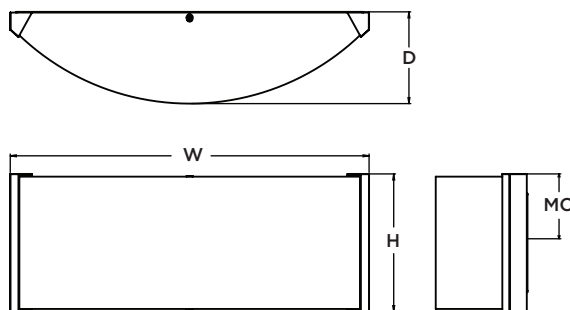
Warranty

Limited warranty: This fixture is free from defects in materials and workmanship for a period of 5 years from date-of-purchase.

Specifications and dimensions
subject to change without notice.



**Limited Quantities Remain.
Consult Factory.**



MC - Mounting Center

Ordering Information:

Satin Nickel	LED	Source Lumens	Adjustable CCT	H	W	D	MC
ALS160614LAJUDSN	17W	1400	3000K/3500K/4000K	6"	15-1/2"	4"	3"