



LOCATION		DATE
PREPARED BY		QUANTITY
COMMENTS		FIXTURE TYPE
CATALOG NUMBER		

Hinsdale Overbed HDB Series

Features

The Hinsdale T8 light is a good solution for overbed applications. The fixture contains 2 ballasts and is available with or without a 4-position pull switch for direct and indirect lighting requirements. A night light is included with the fixture. The Crown Molding frame is made of real wood and available in a variety of colors. There is a frosted white bottom diffuser and clear acrylic top panel for indirect lighting.

Construction

The housing is die formed from 22-gauge steel and is provided with standard mounting holes and wiring access.

Finish

The frame is constructed in real wood and is available unfinished or in the following painted finishes; Ivory, Taupe and White.

Diffuser

The top diffuser is made from .10" clear acrylic sheet and the bottom diffuser is frosted white .10" thick sheet.

Electrical

This unit is wired with two UL listed electronic high power factor instant start ballasts for one up, two down T8 lamps at 120V- 50/60 Hz AC operation. Four position, three circuit pull switch (on up, on down, on both, all off) are standard and located toward the right end. LED nightlight and on/off pull switch is included.

Lamping

For use with 3/25 or 3/32 Watt T8 linear fluorescent lamps; supplied by others.

Certification

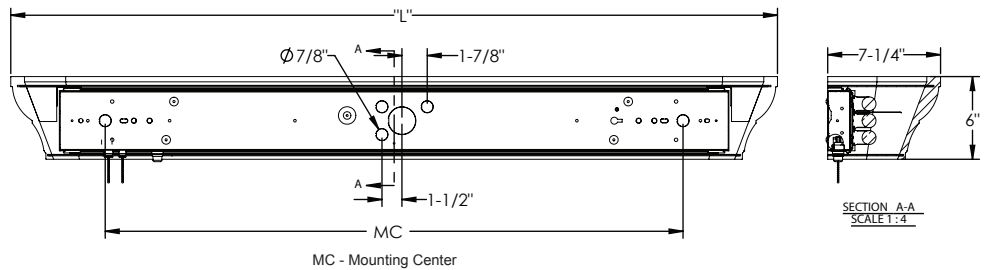
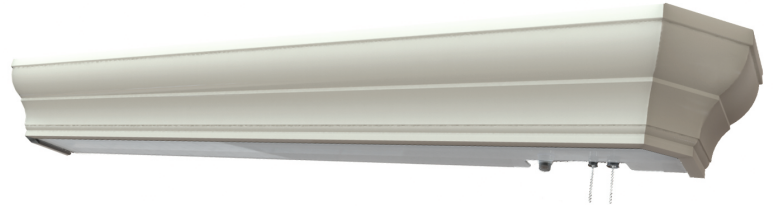
cULus listed for damp locations.

Options

120-277V universal voltage available without switch and nightlight.

Specifications and dimensions
subject to change without notice.

**Limited Quantities Remain.
Consult Factory.**



Ordering Information:

Ivory	Taupe	White	Qty.	Lamp	H	L	D	MC
HDB325TTE8	HDB325TTE8	HDB325WHE8	3	F25T8	6"	43"	7-1/4"	29-1/2"
HDB332PIE8	HDB332TTE8	HDB332WHE8	3	F32T8	6"	55"	7-1/4"	41-1/2"