



| | | |
|----------------|--|--------------|
| LOCATION | | DATE |
| PREPARED BY | | QUANTITY |
| COMMENTS | | FIXTURE TYPE |
| CATALOG NUMBER | | |

Hollywood LED Vanity HLWV Series

Features

This contemporary clean line design provides a dramatic look with bevel housing. Three and four light option. Fixture mounts to a standard junction box (not included) on a wall.

Construction

The frame and backplate is 20-gauge die-formed from steel. Power supply connections must be made inside a junction box (not included).

Finish

Stamped metal base housing is painted in satin nickel finish.

Diffuser

Individual diffusers are white acrylic and are non-removable.

Electrical

Input 120VAC / 60Hz.
Not compatible with dimmers.

LED

Integrated LED modules capable of producing:
18.5W = 1800 source lumens, 1600 delivered lumens
28W = 2800 source lumens, 2100 delivered lumens
3000K (CCT). Rated for 50,000 hours, 80 CRI

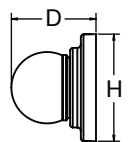
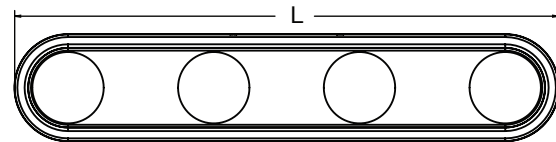
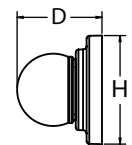
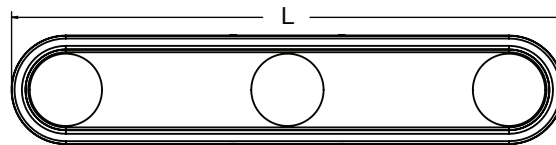
Certification

All fixtures are cETLus listed for indoor damp locations.
ADA

Warranty

Limited warranty: This fixture is free from defects in materials and workmanship for a period of 5 years from date-of-purchase.

Specifications and dimensions are
subject to change without notice.



Ordering Information:

| Satin Nickel | LED | Source Lumens | Delivered Lumens | CCT | L | H | D |
|------------------------------|-------|---------------|------------------|-------|-----|--------|----|
| HLWV240417L30ENSN (3-Light) | 18.5W | 1800 | 1600 | 3000K | 24" | 4-3/4" | 4" |
| HLWV240422L30ENSN (4-Light) | 28W | 2800 | 2100 | 3000K | 24" | 3-5/8" | 4" |