



Hollywood LED Vanity HLWV Series

Features

This contemporary clean line design provides a dramatic look with bevel housing. Three and four light option. Fixture mounts to a standard junction box (not included) on a wall.

Construction

The frame and backplate is 20-gauge die-formed from steel. Power supply connections must be made inside a junction box (not included).

Finish

Stamped metal base housing is painted in satin nickel finish.

Diffuser

Individual diffusers are white acrylic and are non-removable.

Electrical

Input 120-277 VAC / 60Hz.
Not compatible with dimmers.

LED

Integrated LED modules capable of producing:
20W = 2130 delivered lumens
28W = 3010 delivered lumens
Adjustable Choice 2700K, 3000K, 3500K, 4000K, 5000K (CCT).
Rated for 50,000 Hrs. 90 CRI.

Certification

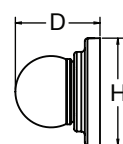
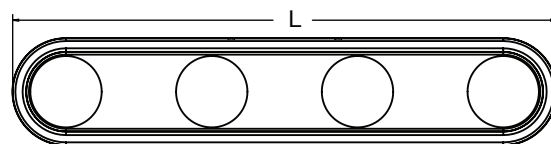
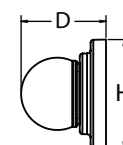
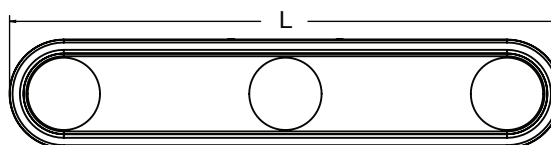
All fixtures are cETLus listed for indoor damp locations.
ADA

Warranty

Limited warranty: This fixture is free from defects in materials and workmanship for a period of 5 years from date-of-purchase.

Specifications and dimensions are subject to change without notice.

LOCATION		DATE
PREPARED BY		QUANTITY
COMMENTS		FIXTURE TYPE
CATALOG NUMBER		



Ordering Information:

Black	Satin Nickel	LED	Delivered Lumens	Adjustable CCT	L	H	D
HLWV240517LAJMBVK (3-Light)	HLWV240517LAJMVSN (3-Light)	20W	2130	2700K/3000K/3500K/4000K/5000K	24"	4-3/4"	4"
HLWV240522LAJMBVK (4-Light)	HLWV240522LAJMVSN (4-Light)	28W	3010	2700K/3000K/3500K/4000K/5000K	24"	4-3/4"	4"