



Metro Fixed Rail MTRF Series

Features

This decorative dimmable fixed rail features reliable high-performance LEDs. Heads swivel and pivot to direct light where needed. Applications that this fixture could fit well include: kitchens, retail environments, and anywhere that needs highlighted illumination. The fixture mounts to a standard junction box (not included). These fixtures mount to the ceiling or wall.

Construction

The canopy is 22-gauge stamped steel and the rail is made of 20-gauge steel tube. Power supply connections must be made inside a junction box (not included).

Finish

The canopy, rail, and individual rail heads are plated in a satin nickel finish with a clear lacquer topcoat.

Diffuser

Frosted clear glass.

Electrical

Input 120 VAC 60 Hz.

Compatible with residential TRIAC and ELV dimmers.

LED

Fixture includes 4 integrated LED modules capable of producing:
26W = 2600 source lumens, 1800 delivered lumens
3000K (CCT) rated for 50,000 hrs., 90 CRI.

Certification

All fixtures are cETLus listed for indoor damp locations.

Title 24/JA8 Compliant

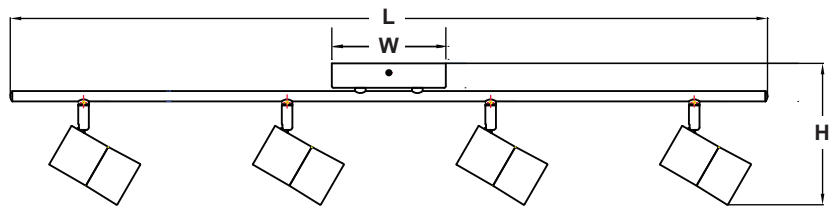
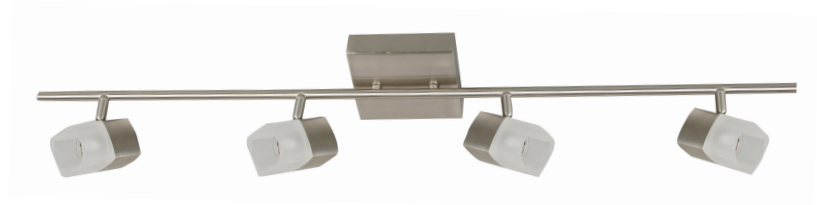
Warranty

Limited warranty: This fixture is free from defects in materials and workmanship for a period of 5 years from date-of-purchase.

Specifications and dimensions

subject to change without notice.

LOCATION		DATE
PREPARED BY		QUANTITY
COMMENTS		FIXTURE TYPE
CATALOG NUMBER		



Ordering Information:

Satin Nickel	LED	Source Lumens	Delivered Lumens	CCT	L	W	H
MTRF4450L30SN	26W	2600	1800	3000K	36-5/8"	5-15/16"	6-13/16"