



## Pierce Low Profile Wrap (5 CCT) PRCL Series

### Features

This low profile, clean appearance, surface mounted wrap provides high light levels with a smooth white lens. It can be used in various residential applications. Fixture mounts to standard junction box (not included). It can be used in various commercial and residential applications.

### Bi-Level Motion Sensor (Optional '-MS') Excludes 24"

- Built-in daylight sensor
- Detection area, time delay and daylight threshold can be precisely set via DIP switch
- Wide detection area, range up to 50 ft. (16 m) max

### Construction

Housing is die-formed of 22-gauge steel. Power supply connections must be made inside the junction box.

### Finish

Housing is finished in lighting grade white baked gloss enamel paint.

### Diffuser

Acrylic diffuser is .05" thick white sheet.

### Electrical

This unit is wired with a constant current low voltage electronic LED driver rated for 120-277V compatible with residential (TRIAC/ELV) and commercial (0-10V) dimmers. TRIAC and ELV dimming only at 120VAC.

MS-Fixture includes integrated motion sensor with Built-in 3-Step dimming function but is not compatible with dimming controls.

### Lamping

Fixture includes LED modules capable of producing 5000 source lumens:

23W = 2500 source lumens

50W = 5000 source lumens

Adjustable choice 2700K, 3000K, 3500K, 4000K, 5000K (CCT)

Rated for 50,000 Hrs., 90 CRI.

### Certification

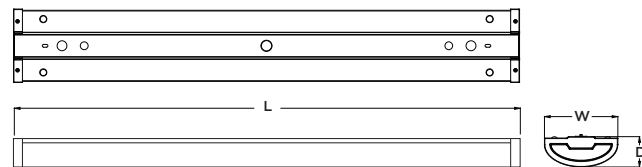
cETLus listed

Title 24/JA8 Compliant

### Warranty

Limited warranty: This fixture is free from defects in materials and workmanship for a period of 5 years from date-of-purchase.

Specifications and dimensions subject to change without notice.

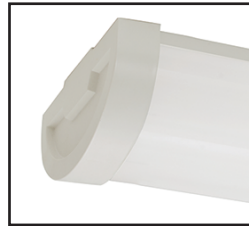


### Ordering Information:

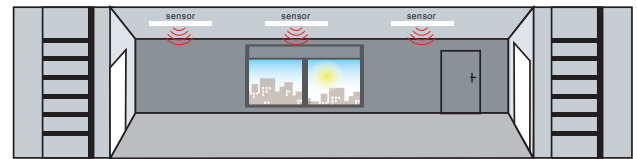
White	LED	Source Lumens	Adjustable CCT	L	W	D
PRCL2407L5AJUDWH	23W	2500	2700K/3000K/3500K/4000K/5000K	24"	6-1/2"	2-3/4"
PRCL4507L5AJUDWH	50W	5000	2700K/3000K/3500K/4000K/5000K	44-7/8"	6-1/2"	2-3/4"

White with motion sensor	LED	Source Lumens	Adjustable CCT	L	W	D
PRCL4507L5AJUDWH-MS	50W	5000	2700K/3000K/3500K/4000K/5000K	44-7/8"	6-1/2"	2-3/4"

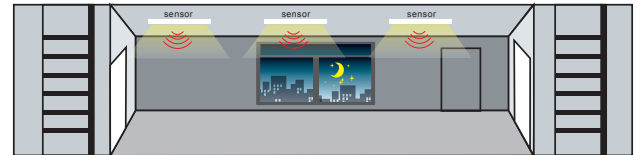
LOCATION		DATE
PREPARED BY		QUANTITY
COMMENTS		FIXTURE TYPE
CATALOG NUMBER		



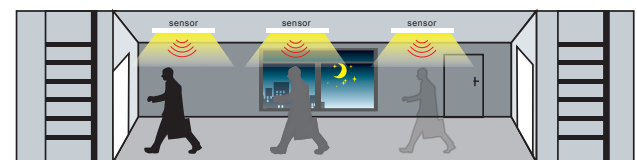
When sufficient light, the fixtures will not switch on.



When insufficient light, the fixtures turn on at desired dimming level (10% - 50%).



When motion is detected, fixtures switch to full light output.



After standby period of no motion, fixtures return to desired dimming level (10%-50%).

