



LOCATION		DATE
PREPARED BY		QUANTITY
COMMENTS		FIXTURE TYPE
CATALOG NUMBER		

Stratus LED Vanity V8PN Series

Features

Contemporary narrow white cloud vanity has rounded corners and can be mounted vertically or horizontally. Diffuser fully encloses the fixture providing a clean appearance. Power supply connections can be made in a 2" x 4" handy-box (not included) or made inside the housing.



Construction

The wiring channel is formed from 22-gauge steel and is provided with standard mounting holes and wiring access.



Finish

Housing is finished in lighting grade baked gloss white enamel paint.

Diffuser

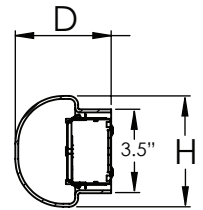
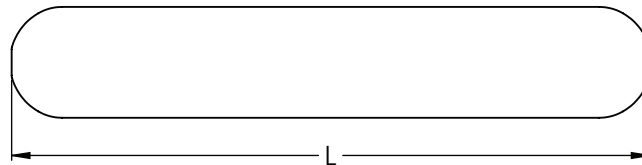
Diffuser is vacuum-formed .125" thick crepe matte texture. Diffuser is secured with a screw on each end.

Electrical

Input 120-277 VAC 60 Hz.
Compatible with 0-10V dimmers.

LED

Integrated LED modules capable of producing:
26W = 2000 source lumens
35W = 3000 source lumens
Adjustable Choice 3000K, 3500K, 4000K (CCT).
Rated for 50,000 Hrs. 90 CRI.

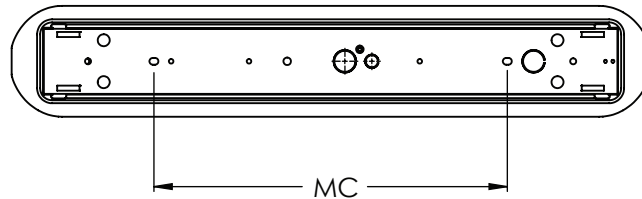


Certification

All fixtures are cETLus listed for damp indoor locations.
ADA

Warranty

Limited warranty: This fixture is free from defects in materials and workmanship for a period of 5 years from date-of-purchase.



Specifications and dimensions
subject to change without notice.

Ordering Information:

White	LED	Source Lumens	Adjustable CCT	L	H	D	MC
V8PN260420LAJD2WH	26W	2000	3000K/3500K/4000K	26-3/4"	4-5/8"	4"	19"
V8PN380430LAJD2WH	35W	3000	3000K/3500K/4000K	38-3/4"	4-5/8"	4"	31-1/2"