



LOCATION		DATE
PREPARED BY		QUANTITY
COMMENTS		FIXTURE TYPE
CATALOG NUMBER		



Zoe LED Sconce ZOS Series

Features

Simplistic cube design. Indirect light with wall wash effect. Ideal use in hallways, entrances or anywhere general lighting is needed. Provides lighting in residential, commercial and hospitality applications. Meets ADA requirements. Fixture mounts to standard junction box (not included).

Construction

Back plate is die-formed of 22-gauge steel. Standard mounting holes and hardware are included. Power supply connections must be made inside a junction box (not included).

Finish

All metal parts are painted in White or Black

Electrical

Input 120-277 VAC 60 HZ.
Compatible with residential (TRIAC/ELV) and commercial (0-10V) dimmers. TRIAC and ELV dimming only at 120 VAC.

Lamping

Integrated LED modules capable of producing:
9W = 420 delivered lumens
3000K (CCT). Rated for 50,000 Hrs., 90 CRI.

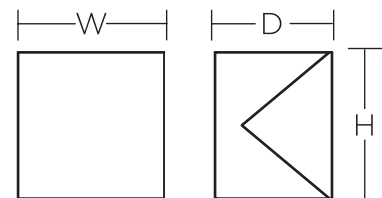
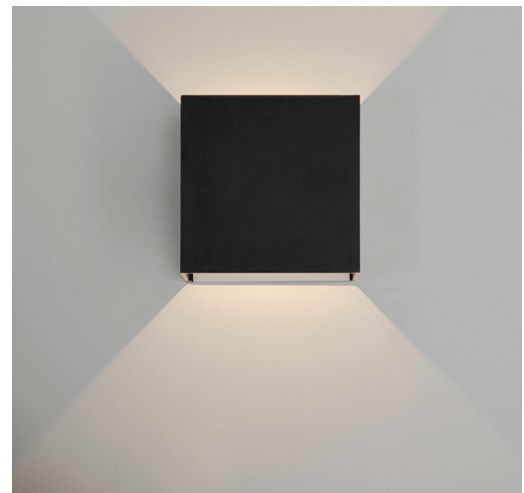
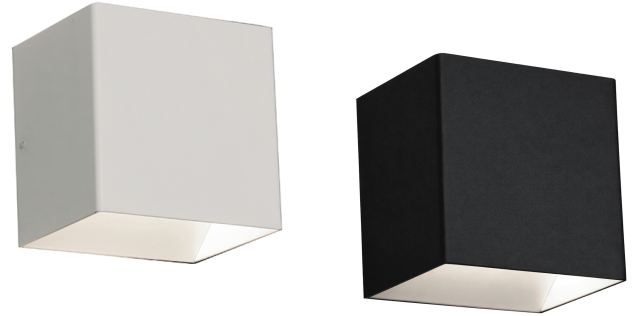
Certification

All fixtures are cETLus listed for indoor damp locations.
Title 24/JA8 Compliant
ADA

Warranty

Limited warranty: This fixture is free from defects in materials and workmanship for a period of 5 years from date of purchase.

Specifications and dimensions
subject to change without notice.



Ordering Information:

Black	White	LED	Delivered Lumens	CCT	H	W	D
ZOS0505L30UDBK	ZOS0505L30UDWH	9W	420	3000K	5"	5"	4"