

ATHENS Oval PENDANT



CONSTRUCTION:

- Fabric shade
- White acrylic bottom diffuser with decorative crystal finial
- Crystal stem accents
- (2) 36 in. standard stem kit includes 6 in., 12 in. and 18 in. sections for adjustability
- Additional stem sections available, maximum height 12 ft.
- 12 ft. of field adjustable wire included

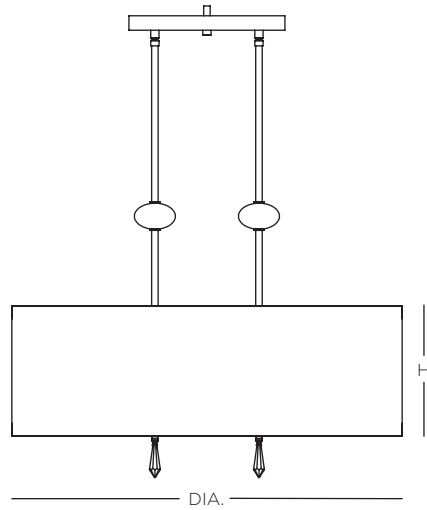
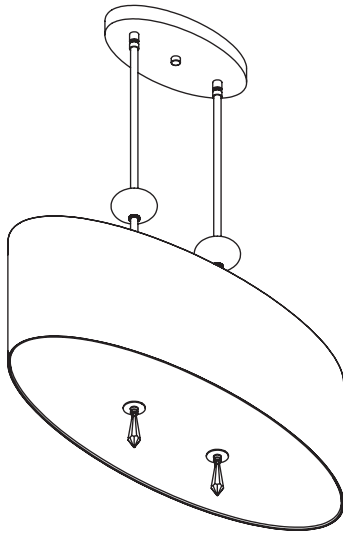
ELECTRICAL:

- 120V medium base sockets

CERTIFICATION:

- cULus Listed

ATHENS Oval PENDANT



| Specifications | | | Medium Base |
|----------------|-----------|-----|--------------|
| Size | L x W | H | Sockets |
| 04 | 30" x 12" | 10" | 2 x 100W max |
| 05 | 36" x 14" | 12" | 3 x 100W max |

Ordering

| Model | Size | Lamping | - Finish | - Fabric |
|-------|----------------------|-----------------------|---|--|
| SATHP | 04 = 30" 05 = 36" | MB Medium Base Socket | BN Brushed Nickel PN Polished Nickel | 203 Black Silk Dupioni 206 Ivory Silk Dupioni 209 White Silk Dupioni |

Example: SATHS04MB-BN-206

Finish Options

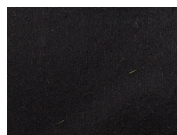


BN
Brushed Nickel

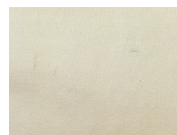


PN
Polished Nickel

Fabric Options



203
Black Silk
Dupioni



206
Ivory Silk
Dupioni



209
White Silk
Dupioni

All specifications and dimensions subject to change without notice.